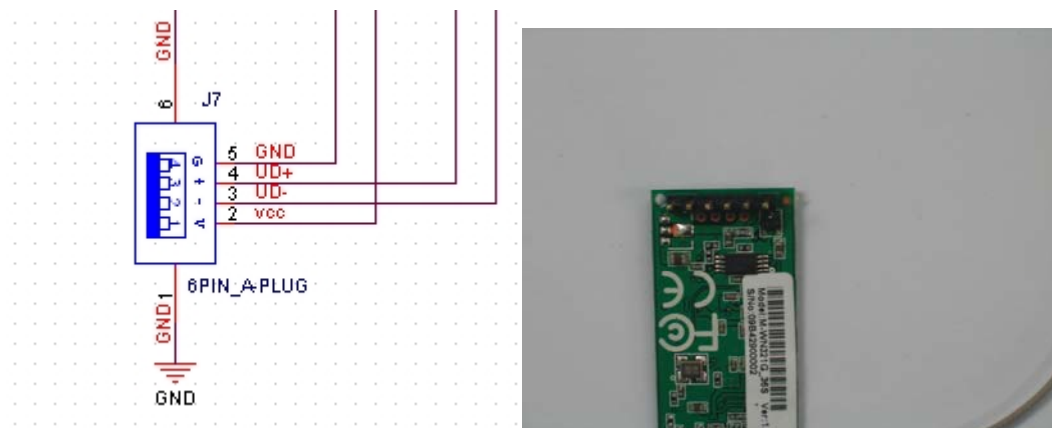


Installation Guide

The M-WN321GM 54M Wireless USB Module gives you the flexibility to install the wireless system, such as wireless printer server, in the most convenient location available, without the cost of running network cables. In fact, this module has 8 final models because of its different specification of pin number, input voltage and antenna type. Generally, they can be divided into two kinds according to its input voltage. Users can choose appreciate model according to actual use.

In this guide, we take M-WN321GM_36S and wireless print server as a reference to show its installation. This model is 6pin connector, its input is 3.3V and antenna type is RP-SMA.

1. Before install it into your product, please read next information which show the module's pin description, it is compatible with standard USB2.0, and for the actual product, the right turn is from right to left (the pin connector is on upside, just like below picture shows).



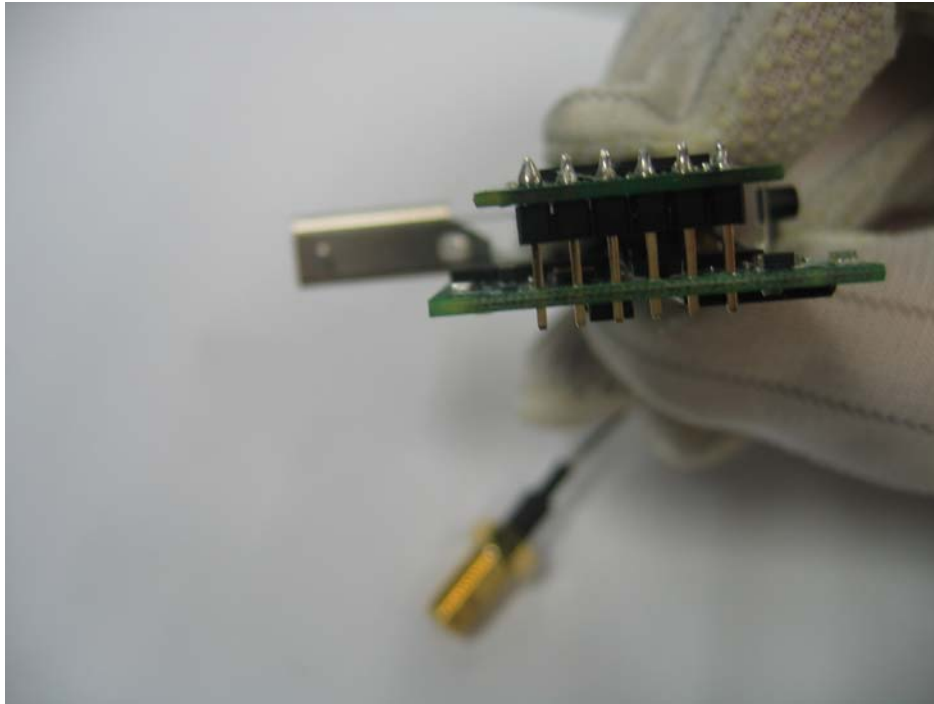
2. For using the module into your device, you should make sure the device has the same pin hole and the right pin definition. Below is the sample of wireless print server's main board. This print server has six pin holes and it is designed according to standard USB2.0. the pin hole's turn is from left to right.



3. Insert the module from the upside of the main board.

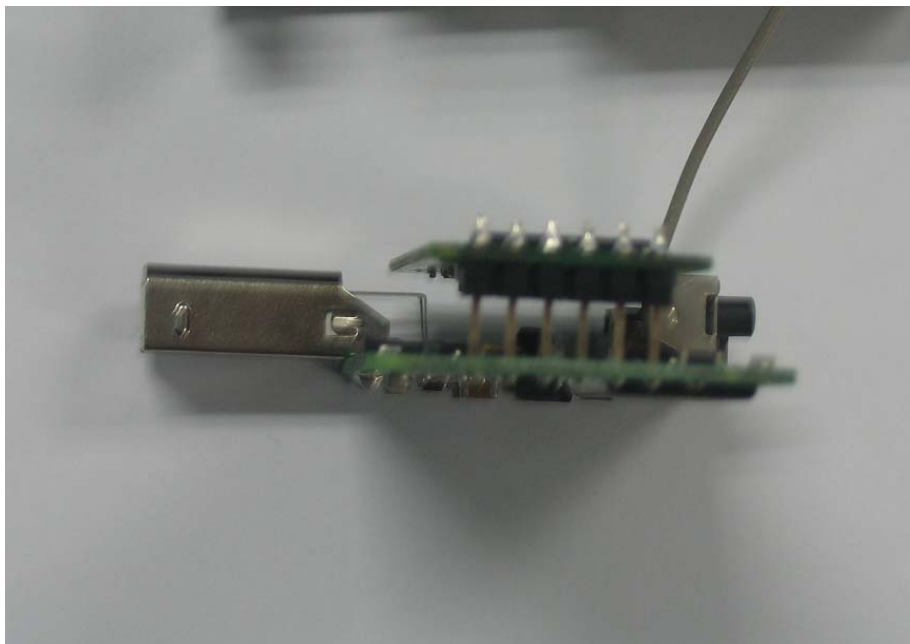






4. Make sure the module's pin connector come out on back ground of main board about 1mm and then fix it by welding.





For other use, you also can insert the M-WN321GM into your device according to above steps and guide. If you have some question on this installation guide, please tell us in time.