



Shenzhen Certification Technolohg Service Co., Ltd  
3F, Bldg27,Area A, Tanglang Industrial Zone, Xili Town,  
Nanshan District, ShenZhen, Guangdong, P.R. China.

# TEST REPORT

**FCC ID: WWIMD300K3**

**Applicant** : Beijing Choice Electronic Technology Co., Ltd  
**Address** : Bailangyuan Building B, Rm. 1127-1128, Fuxing Road, A36,  
100039 Beijing, China

**Equipment under Test (EUT):**

**Name** : Handheld Pulse Oximeter  
**Model** : MD300K3

**Standards** : FCC PART 15, SUBPART C : 2010 (Section 15.249)

**Report No.** : STE110310138

**Date of Test** : March 10-13, 2011

**Date of Issue** : March 15, 2011

<b>Test Result :</b>	<b>PASS *</b>
----------------------	---------------

\* In the configuration tested, the EUT complied with the standards specified above

Authorized Signature

(Mark Zhu)  
General Manager

The manufacture should ensure that all the products in series production are in conformity with the product sample detailed in this report.

If the product in this report is used in any configuration other than that detailed in the report, the manufacturer must ensure the new system complies with all relevant standards. Any mention of Shenzhen Certification Technology Service Co., Ltd. Or test done by Shenzhen Certification Technology Service Co., Ltd. Approvals in connection with, distribution or use of the product described in this report must be approved by Shenzhen Certification Technology Service Co., Ltd. Approvals in writing.

## TABLE OF CONTENT

Description	Page
<b>1 General Information</b> -----	<b>3</b>
1.1 Description of Device (EUT)-----	3
1.2 Description of Test Facility-----	4
<b>2 EMC Equipment List</b> -----	<b>4</b>
<b>3 Test Procedure</b> -----	<b>5</b>
<b>4 Summary of Measurement</b> -----	<b>6</b>
<b>5 POWER LINE CONDUCTED EMISSION</b> -----	<b>7</b>
5.1 Conducted Emission Limits(15.209&249)-----	7
5.2 Test Setup-----	7
5.3 Test Procedure-----	8
5.4 Test Resluts-----	8
<b>6 Radiation Emission</b> -----	<b>10</b>
6.1 Radiation Emission Limits(15.209&249 (a))-----	10
6.2 Test Setup-----	11
6.3 Test Procedure-----	12
6.4 Test Equipment Setting For emission test.est Result-----	13
6.5 Test Condition-----	13
6.6 Test Result-----	13
<b>7 Occupied bandwidth</b> -----	<b>18</b>
7.1 Test limit-----	18
7.2 Method of measurement-----	18
7.3 Test Setup-----	18
7.4 Test Results-----	18
<b>8 Band Edge Check</b> -----	<b>19</b>
8.1 Test limit-----	19
8.2 Test Procedure-----	19
8.3 Test Setup-----	19
8.4 Test Result-----	19
<b>9 Antenna Requirement</b> -----	<b>24</b>
9.1 Standard Requirement-----	24
9.2 Antenna Connected Construction-----	24
9.3 Result-----	24
<b>10 Photographs of Test Setup</b> -----	<b>25</b>
<b>11 Photographs of EUT</b> -----	<b>28</b>

# 1 General Information

## 1.1 Description of Device (EUT)

Trade Name : N/A

EUT : Handheld Pulse Oximeter

Model No. : MD300K3

Type of Antenna : Integral Antenna

Operation Frequency : 2402-2480MHz

Channel number : 79

Modulation type : GFSK

Power Supply : DC 9V Supply by adapter or DC 6V Supply by battery

Rated PF  
output Power : 96.95 dBuV (PK detector)

Applicant : Beijing Choice Electronic Technology Co., Ltd  
Address : Bailangyuan Building B, Rm. 1127-1128, Fuxing Road, A36,  
100039 Beijing, China

Manufacturer : Beijing Choice Electronic Technology Co., Ltd  
Address : No. 9 Shuangyuan Road, Badachu High tech. Zone,  
Shijingshan District, 100041 Beijing, China

## 1.2 Description of Test Facility

Shenzhen Certification Technology Service Co.,Ltd.  
 3F, Bldg.27, Area A, Tanglang Industrial Zone, Xili Town, Nanshan District,  
 Shenzhen 518055, Guangdong, P.R. China  
 FCC Registered No.:305283

## 2 EMC Equipment List

Equipment	Manufacture	Model No.	Serial No.	Last cal.	Cal Interval
3m Semi-Anechoic	ETS-LINDGREN	N/A	SEL0017	16/06/2010	1Year
Spectrum analyzer	Agilent	E4443A	MY46185649	06/06/2010	1Year
Receiver	R&S	ESCI	100492	06/06/2010	1Year
Receiver	R&S	ESCI	101202	07/01/2011	1Year
Bilog Antenna	Sunol	JB3	A121206	04/06/2010	1Year
L.I.S.N.	R&S	ESH3-Z5	100305	16/06/2010	1Year
Horn Antenna	EMCO	3115	640201028-06	04/06/2010	1Year
Power Meter	Anritsu	ML2487A	6K00001491	23/02/2011	1Year
ETS Horn Antenna	ETS	3160	SEL0076	18/06/2010	1Year
Active Loop Antenna	Beijing Daze	ZN30900A	SEL0097	15/06/2010	1Year
Cable	Resenberger	N/A	No.1	04/06/2010	1Year
Cable	SCHWARZBECK	N/A	No.2	04/06/2010	1Year
Cable	SCHWARZBECK	N/A	No.3	04/06/2010	1Year
Pre-amplifier	R&S	AFS42-00101 800-25-S-42	SEL0081	18/06/2010	1Year
Pre-amplifier	R&S	AFS33-18002650 -30-8P-44	SEL0080	18/06/2010	1Year

### 3 Test Procedure

**POWER LINE CONDUCTED INTERFERENCE:** The test procedure used was ANSI Standard C63.4-2003 using a 50  $\mu$  H LISN. Both Lines were observed. The bandwidth of the receiver was 10kHz with an appropriate sweep speed. The ambient temperature of the EUT was 25°C with a humidity of 58%.

**RADIATION INTERFERENCE:** The test procedure used was ANSI Standard C63.4-2003 using a ANRITSU spectrum analyzer with a pre-selector. The analyzer was calibrated in dB above a micro volt at the output of the antenna. The resolution bandwidth was 100kHz and the video bandwidth was 300 kHz up to 1 GHz and 1 MHz with a video BW of 3MHz above 1 GHz. The ambient temperature of the EUT was 25°C with a humidity of 58%.

**FORMULA OF CONVERSION FACTORS:** The Field Strength at 3m was established by adding the meter reading of the spectrum analyzer (which is set to read in units of dBuV) to the antenna correction factor supplied by the antenna manufacturer and cable loss. The antenna correction factors and cable loss are stated in terms of dB. The gain of the Pre-selector was accounted for in the Spectrum Analyzer Meter Reading.

Example:

Freq (MHz) METER READING + ACF + CABLE = FS

33.20 dBuV + 10.36 dB + 0.9 dB= 44.46 dBuV/m @ 3m

**ANSI STANDARD C63.4-2003 10.1.7 MEASUREMENT PROCEDURES:** The EUT was placed on a table 80 cm high and with dimensions of 1m by 1.5m. The EUT was placed in the center of the table (1.5m side). The table used for radiated measurements is capable of continuous rotation. When an emission was found, the table was rotated to produce the maximum signal strength. At this point, the antenna was raised and lowered from 1m to 4m. The antenna was placed in both the horizontal and vertical planes. The situation was similar for the conducted measurement except that the table did not rotate. The EUT was setup as described in ANSI Standard C63.4-2003 10.1.7 with the EUT 40 cm from the vertical ground wall.

## 4 Summary of Measurement

Test Item	Test Requirement	Standard Paragraph	Result
Spurious Emission	FCC PART 15 : 2010	Section 15.249&15.209	Compliance
Conduction Emission	FCC PART 15: 2010	Section 15.207	Compliance
Occupied bandwidth	FCC PART 15: 2010	Section 15.249	Not applicable
Band edge Requirement	FCC PART 15: 2010	Section 15.249	Compliance
Antenna Requirement	FCC PART 15 : 2010	Section 15.203	Compliance

Note: The EUT has been tested as an independent unit. And Continual transmitting in maximum power (The new battery be used during Test).

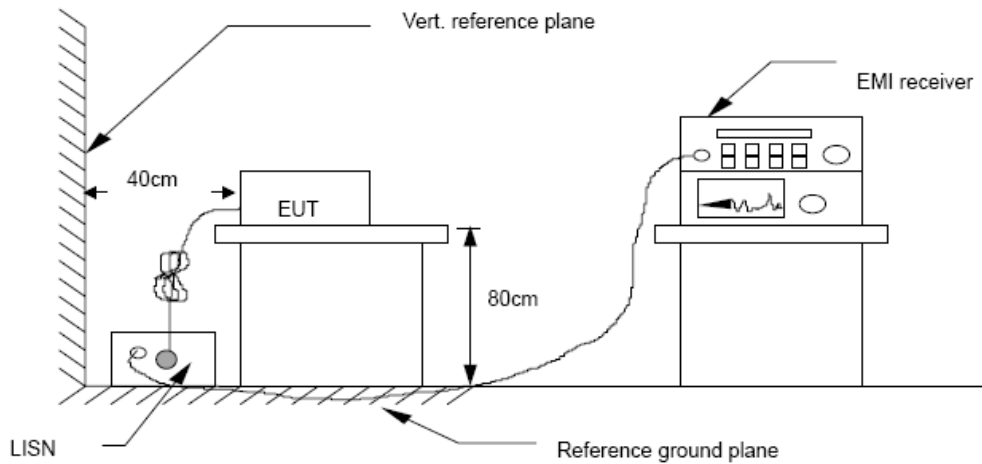
## 5 POWER LINE CONDUCTED EMISSION

### 5.1 Conducted Emission Limits(15.209&249)

Frequency MHz	Limits dB( $\mu$ V)	
	Quasi-peak Level	Average Level
0.15 -0.50	66 -56*	56 - 46*
0.50 -5.00	56	46
5.00 -30.00	60	50

- Notes: 1. \*Decreasing linearly with logarithm of frequency.  
 2. The lower limit shall apply at the transition frequencies.  
 3. The limit decreases in line with the logarithm of the frequency in the rang of 0.15 to 0.50 MHz.

### 5.2 Test Setup



### 5.3 Test Procedure

The EUT is put on the plane 0.8m high above the ground by insulating support and is connected to the power mains through a line impedance stabilization network (L.I.S.N.). This provides a 50ohm coupling impedance for the EUT system. Please refer the block diagram of the test setup and photographs. Both sides of AC lines are checked to find out the maximum conducted emission. In order to find the maximum emission levels, the relative positions of equipment and all of the interface cables shall be changed according to ANSI C63.4-2003 on Conducted Emission Measurement.

The bandwidth of test receiver (R & S ESCS30) is set at 9 kHz.

### 5.4 Test Results

**PASS**

Detailed information please see the following page.



<b>EUT</b>	Handheld Pulse Oximeter	<b>Model Name</b>	MD300K3
<b>Temperature</b>	25°C	<b>Relative Humidity</b>	58%
<b>Pressure</b>	960hPa	<b>Test voltage</b>	DC 9V supply by adapter
<b>Test Mode</b>	Noraml		

<b>FREQ MHz</b>	<b>PEAK dBuV</b>	<b>Q.P. See Peak dBuV</b>	<b>AVG See Peak dBuV</b>	<b>Q.P. Limit dBuV</b>	<b>AVG Limit dBuV</b>	<b>Q.P. Margin dBuV</b>	<b>AVG Margin dBuV</b>	<b>NOTE</b>
0.234	38.41	---	---	62.31	52.31	-23.90	-13.90	L1
0.690	36.38	---	---	56.00	46.00	-19.62	-9.62	L1
1.570	36.24	---	---	56.00	46.00	-19.76	-9.76	L1
2.398	36.81	---	---	56.00	46.00	-19.19	-9.19	L1
7.214	35.73	---	---	60.00	50.00	-24.27	-14.27	L1
24.578	37.59	---	---	60.00	50.00	-22.41	-12.41	L1
0.254	36.89	---	---	61.63	51.63	-24.74	-14.74	L2
0.298	34.21	---	---	60.30	50.30	-26.09	-16.09	L2
0.722	35.64	---	---	56.00	46.00	-20.36	-10.36	L2
1.510	34.49	---	---	56.00	46.00	-21.51	-11.51	L2
4.726	37.52	---	---	56.00	46.00	-18.48	-8.48	L2
24.578	36.19	---	---	60.00	50.00	-23.81	-13.81	L2

Note: L1=Line One (Live Line) /L2= Line Two (Neutral Line)  
 PEAK greater than QP greater than AVG

## 6 Radiation Emission

### 6.1 Radiation Emission Limits(15.209&249 (a))

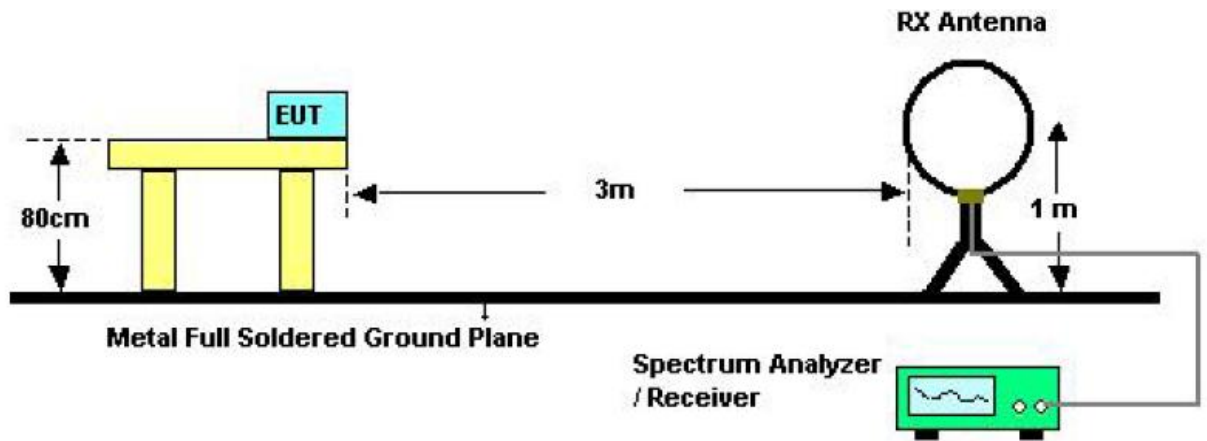
Frequency (MHZ)	Field Strength Limits at 3 metres (watts,e.i.r.p.)		
	uV/m	dB uV/m	Measurement distance(m)
0.009-0.490	2400/F(kHz)	XX	300
0.490-1.705	24000/F(kHz)	XX	30
1.705-30	30	29.5	30
30~88	100(3nW)	40	3
88~216	150(6.8nW)	43.5	3
216~960	200(12nW)	46	3
Above960	500(75nW)	54	3
Carrier frequency		93.97(AV)	3
Carrier frequency		113.97(PK)	3

**NOTE:**

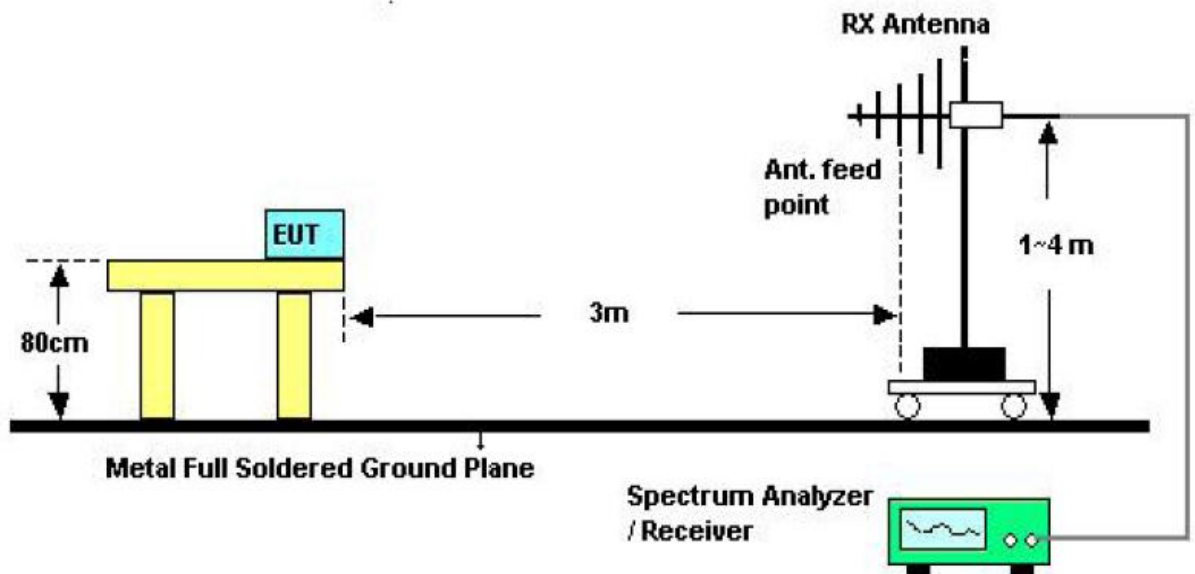
- a) The tighter limit applies at the band edges.
- b) Emission Level(dB uV/m)=20log Emission Level(Uv/m)

## 6.2 Test Setup

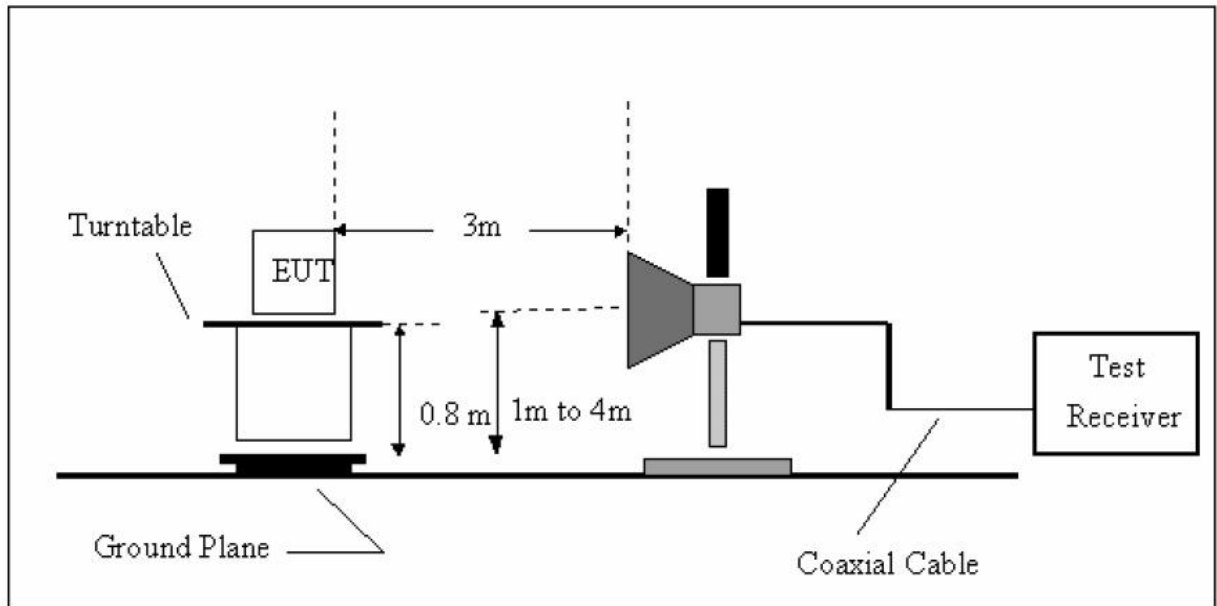
See the next page



Below 30MHZ Test Setup



Above 30MHZ Test Setup



Above 1GHZ Test Setup

### 6.3 Test Procedure

- a) The measuring distance of 3m shall be used for measurements at frequency up to 1GHZ and above 1GHZ, The EUT was placed on a rotating 0.8 m high above ground,The table was rotated 360 degrees to determine the position of the highest radiation
- b) The Test antenna shall vary between 1m and 4m,Both Horizontal and Vertical antenna are set ot make measurement.
- c) The initial step in collecting conducted emission data is a spectrum analyzer Peak detector mode pre-scanning the measurement frequency range.Significant Peaks are then marked.and then Qusia Peak Detector mode remeasured
- d) If Peak value comply with QP limit Below 1GHZ.The EUT deemed to comply with QP limit.But the Peak value and average value both need to comply with applicable limit above 1GHZ.
- e) For the actual test configuration,please see the test setup photo.

#### 6.4 Test Equipment Setting For emission test.est Result

9KHZ~150KHZ	RBW 200HZ	VBW1KHZ
150KHZ~30MHZ	RBW 9KHZ	VBW 30KHZ
30MHZ~1GHZ	RBW 120KHZ	VBW 300KHZ
Above 1GHZ	RBW 1MHZ	VBW 3MHZ

#### 6.5 Test Condition

Continual Transmitting in maximum power.

#### 6.6 Test Result

Detailed information please see the following page.

**Radiated Emissions Result**

<b>EUT</b>	Handheld Pulse Oximeter	<b>Model Name</b>	MD300K3
<b>Temperature</b>	25°C	<b>Relative Humidity</b>	56%
<b>Pressure</b>	960hPa	<b>Test voltage</b>	DC 9V supply by adapter
<b>Test Mode</b>	TX		

Freq. (MHz)	Ant.Pol. H/V	Detector Mode (PK/OP)	Reading (dBuV)	Factor (dB)	Actual FS (dBuV/m)	Limits 3m (dBuV/m)	Margin (dBuV/m)
167.740	V	Peak	42.32	-12.80	29.52	43.50	-13.98
368.520	V	Peak	45.56	-11.79	33.77	46.00	-12.23
549.910	V	Peak	39.09	-7.50	31.59	46.00	-14.41
606.170	V	Peak	39.34	-6.79	32.55	46.00	-13.45
781.750	V	Peak	35.02	-3.84	31.18	46.00	-14.82
892.330	V	Peak	35.19	-2.68	32.51	46.00	-13.49

<b>EUT</b>	Handheld Pulse Oximeter	<b>Model Name</b>	MD300K3
<b>Temperature</b>	25°C	<b>Relative Humidity</b>	56%
<b>Pressure</b>	960hPa	<b>Test voltage</b>	DC 9V supply by adapter
<b>Test Mode</b>	TX		

Freq. (MHz)	Ant.Pol. H/V	Detector Mode (PK/OP)	Reading (dBuV)	Factor (dB)	Actual FS (dBuV/m)	Limits 3m (dBuV/m)	Margin (dBuV/m)
165.810	H	Peak	42.35	-12.80	29.55	43.50	-13.95
288.020	H	Peak	40.80	-10.58	30.22	46.00	-15.78
464.560	H	Peak	39.73	-9.09	30.64	46.00	-15.36
542.150	H	Peak	38.89	-7.76	31.13	46.00	-14.87
634.310	H	Peak	36.68	-6.19	30.49	46.00	-15.51
790.480	H	Peak	35.06	-4.01	31.05	46.00	-14.95

**Notes:** Above is Below 1GHZ test data  
Peak value > QP value

Radiated Emissions Result of Inside band (2402MHz)

<b>EUT</b>	Handheld Pulse Oximeter	<b>Model Name</b>	MD300K3
<b>Temperature</b>	25°C	<b>Relative Humidity</b>	56%
<b>Pressure</b>	960hPa	<b>Test voltage</b>	DC 9V supply by adapter
<b>Test Mode</b>	TX Low	<b>Antenna polarization</b>	Horizontal/Vertical

Channel Low(2402MHz)									
Fre. MHz	Plority H/V	Reading dBuV	Antenna Factor dB	Cable Loss dB	Amplifier Gain dB	Correct Factor dB	Measure Result dBuV/m	Limit dBuV/m	Margin dB
2402	H	97.54 (PK)	12.3	1.98	19.36	-5.08	92.46	113.97	-21.51
2402	H	85.32 (AV)	12.3	1.98	19.36	-5.08	80.24	93.97	-13.73
--	H	--	--	--	--	--	--	--	--
2402	V	99.71 (PK)	12.3	1.98	19.36	-5.08	94.63	113.97	-19.34
2402	V	86.53 (AV)	12.3	1.98	19.36	-5.08	81.45	93.97	-12.52
--	V	--	--	--	--	--	--	--	--

Freq. (MHz)	Ant. Pol H/V	Peak Reading (dBuV)	AV Reading (dBuV)	Ant. / CL CF (dB)	Actual Fs		Peak Limit (dBuV/m)	AV Limit (dBuV/m)	Margin (dB)	Remark
					Peak (dBuV/m)	AV (dBuV/m)				
1268.44	H	51.83	---	-10.96	40.87	---	74.00	54.00	-13.13	Peak
1475.33	H	49.63	---	-10.27	39.36	---	74.00	54.00	-14.64	Peak
2536.77	H	47.37	---	-7.26	40.11	---	74.00	54.00	-13.89	Peak
4803.22	H	38.65	---	0.64	39.29	---	74.00	54.00	-14.71	Peak
N/A										
1416.88	V	48.87	---	-10.29	38.58	---	74.00	54.00	-15.42	Peak
1974.66	V	49.11	---	-8.64	40.47	---	74.00	54.00	-13.53	Peak
2841.55	V	47.52	---	-6.17	41.35	---	74.00	54.00	-12.65	Peak
4803.22	V	38.49	---	0.64	39.13	---	74.00	54.00	-14.87	Peak
N/A										

**Notes: 1** --Means other frequency and mode comply with standard requirements and at least have 20dB margin.

Correct Factor=Cable Loss+ Antenna Factor-Amplifier Gain

Measurement Result=Reading + Correct Factor

Margin=Measurement Result-Limit

**2** –Spectrum setting:

a. Peak setting 30MHz-1GHz, RBW=120KHz, VBW=300KHz.

b. AV setting 30MHz-1GHz, RBW=1MHz, VBW=10Hz.

**Radiated Emissions Result of Inside band (2441MHz)**

<b>EUT</b>	Handheld Pulse Oximeter	<b>Model Name</b>	MD300K3
<b>Temperature</b>	25°C	<b>Relative Humidity</b>	56%
<b>Pressure</b>	960hPa	<b>Test voltage</b>	DC 9V supply by adapter
<b>Test Mode</b>	TX Mid	<b>Antenna polarization</b>	Horizontal/Vertical

Channel Mid (2441MHz)									
Fre. MHz	Plority H/V	Reading dBuV	Antenna Factor dB	Cable Loss dB	Amplifier Gain dB	Correct Factor dB	Measure Result dBuV/m	Limit dBuV/m	Margin dB
2441	H	96.73 (PK)	12.5	2.01	19.37	-4.86	91.87	113.97	-22.10
2441	H	85.62 (AV)	12.5	2.01	19.37	-4.86	80.76	93.97	-13.21
--	H	--	--	--	--	--	--	--	--
2441	V	99.54 (PK)	12.5	2.01	19.37	-4.86	94.68	113.97	-19.29
2441	V	87.38 (AV)	12.5	2.01	19.37	-4.86	82.52	93.97	-11.45
--	V	--	--	--	--	--	--	--	--

Freq. (MHz)	Ant. Pol H/V	Peak Reading (dBuV)	AV Reading (dBuV)	Ant. / CL CF (dB)	Actual Fs		Peak Limit (dBuV/m)	AV Limit (dBuV/m)	Margin (dB)	Remark
					Peak (dBuV/m)	AV (dBuV/m)				
1375.22	H	49.91	---	-10.43	39.48	---	74.00	54.00	-14.52	Peak
1658.99	H	51.57	---	-9.65	41.92	---	74.00	54.00	-12.08	Peak
1874.66	H	49.20	---	-9.04	40.16	---	74.00	54.00	-13.84	Peak
4880.33	H	37.78	---	0.76	38.54	---	74.00	54.00	-15.46	Peak
N/A										
1674.55	V	51.48	---	-9.65	41.83	---	74.00	54.00	-12.17	Peak
2468.33	V	46.38	---	-7.31	39.07	---	74.00	54.00	-14.93	Peak
2653.44	V	47.29	---	-6.94	40.35	---	74.00	54.00	-13.65	Peak
4880.33	V	40.40	---	0.76	41.16	---	74.00	54.00	-12.84	Peak
N/A										

**Notes: 1** --Means other frequency and mode comply with standard requirements and at least have 20dB margin.

Correct Factor=Cable Loss+ Antenna Factor-Amplifier Gain

Measurement Result=Reading + Correct Factor

Margin=Measurement Result-Limit

**2** –Spectrum setting:

a. Peak setting 30MHz-1GHz, RBW=120KHz, VBW=300KHz.

b. AV setting 30MHz-1GHz, RBW=1MHz, VBW=10Hz.



**Radiated Emissions Result of Inside band (2480MHz)**

<b>EUT</b>	Handheld Pulse Oximeter	<b>Model Name</b>	MD300K3
<b>Temperature</b>	25°C	<b>Relative Humidity</b>	56%
<b>Pressure</b>	960hPa	<b>Test voltage</b>	DC 9V supply by adapter
<b>Test Mode</b>	TX High	<b>Antenna polarization</b>	Horizontal/Vertical

Channel High(2480MHz)									
Fre. MHz	Plority H/V	Reading dBuV	Antenna Factor dB	Cable Loss dB	Amplifier Gain dB	Correct Factor dB	Measure Result dBuV/m	Limit dBuV/m	Margin dB
2480	H	97.31 (PK)	12.6	2.03	19.41	-4.78	92.53	113.97	-21.44
2480	H	84.28 (AV)	12.6	2.03	19.41	-4.78	79.50	93.97	-14.47
--	H	--	--	--	--	--	--	--	--
2480	V	101.73 (PK)	12.6	2.03	19.41	-4.78	96.95	113.97	-17.02
2480	V	88.54 (AV)	12.6	2.03	19.41	-4.78	83.76	93.97	-10.21
--	V	--	--	--	--	--	--	--	--

Freq. (MHz)	Ant. Pol H/V	Peak Reading (dBuV)	AV Reading (dBuV)	Ant. / CL CF (dB)	Actual Fs		Peak Limit (dBuV/m)	AV Limit (dBuV/m)	Margin (dB)	Remark
					Peak (dBuV/m)	AV (dBuV/m)				
1357.44	H	50.95	---	-10.43	40.52	---	74.00	54.00	-13.48	Peak
1685.22	H	49.90	---	-9.65	40.25	---	74.00	54.00	-13.75	Peak
2196.33	H	49.43	---	-8.24	41.19	---	74.00	54.00	-12.81	Peak
4958.44	H	38.66	---	0.98	39.64	---	74.00	54.00	-14.36	Peak
N/A										
1473.22	V	49.98	---	-10.27	39.71	---	74.00	54.00	-14.29	Peak
1894.66	V	49.30	---	-9.04	40.26	---	74.00	54.00	-13.74	Peak
2433.22	V	48.57	---	-7.42	41.15	---	74.00	54.00	-12.85	Peak
4958.44	V	39.76	---	0.98	40.74	---	74.00	54.00	-13.26	Peak
N/A										

- Notes:** 1 --Means other frequency and mode comply with standard requirements and at least have 20dB margin.  
 Correct Factor=Cable Loss+ Antenna Factor-Amplifier Gain  
 Measurement Result=Reading + Correct Factor  
 Margin=Measurement Result-Limit
- 2 –Spectrum setting:  
 a. Peak setting 30MHz-1GHz,RBW=120KHz,VBW=300KHz.  
 b. AV setting 30MHz-1GHz,RBW=1MHz,VBW=10Hz.

## 7 Occupied bandwidth

### 7.1 Test limit

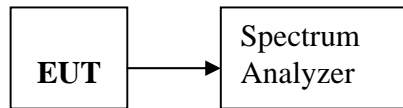
Please refer section 15.249

### 7.2 Method of measurement

a) The bandwidth is measured at an amplitude level reduced 20dB from the reference level. The reference level is the level of the highest amplitude signal observed from the transmitter at the fundamental frequency. Once the reference level is established, the equipment is conditioned with typical modulating signal to produce the worst-case (i.e. the widest) bandwidth.

b) The test receiver RBW set 30KHZ, VBW set 30KHZ, Sweep time set auto.

### 7.3 Test Setup



### 7.4 Test Results

The test not applicable

## 8 Band Edge Check

### 8.1 Test limit

Please refer section 15.249 and section 15.205.

249(d) Emissions radiated outside of the specified frequency bands, except for harmonics, shall be attenuated by at least 50 dB below the level of the fundamental or to the general radiated emission limits in section 15.209, whichever is the lesser attenuation.

249(e) As show in section 15.35(b), for frequencies above 1000MHz, the above field strength limits in paragraphs (a) and (b) of this section are based on average limits. However, the peak field strength of any emission shall not exceed the maximum permitted average limits specified above by more than 20 dB under any condition of modulation. For point-to-point operation under paragraph (b) of this section, the peak field strength shall not exceed 2500 millivolts/meter at 3meters along the antenna azimuth.

### 8.2 Test Procedure

8.2.1. Remove the antenna from the EUT and then connect a low loss RF cable from the antenna port to the spectrum analyzer.

8.2.2. Set spectrum analyzer please see the following test plot.

8.2.3. Set the spectrum analyzer as RBW, VBW=1000 KHz,

8.2.4. Max hold, view and count how many channel in the band.

### 8.3 Test Setup

Please see the section 6.2 Above 1GHZ Test Setup.

### 8.4 Test Result

PASS.

Detailed information please see the following page.

CH Low :

Detector mode: Peak

Agilent 08:14:54 Mar 11, 2011

Polarity: Horizontal

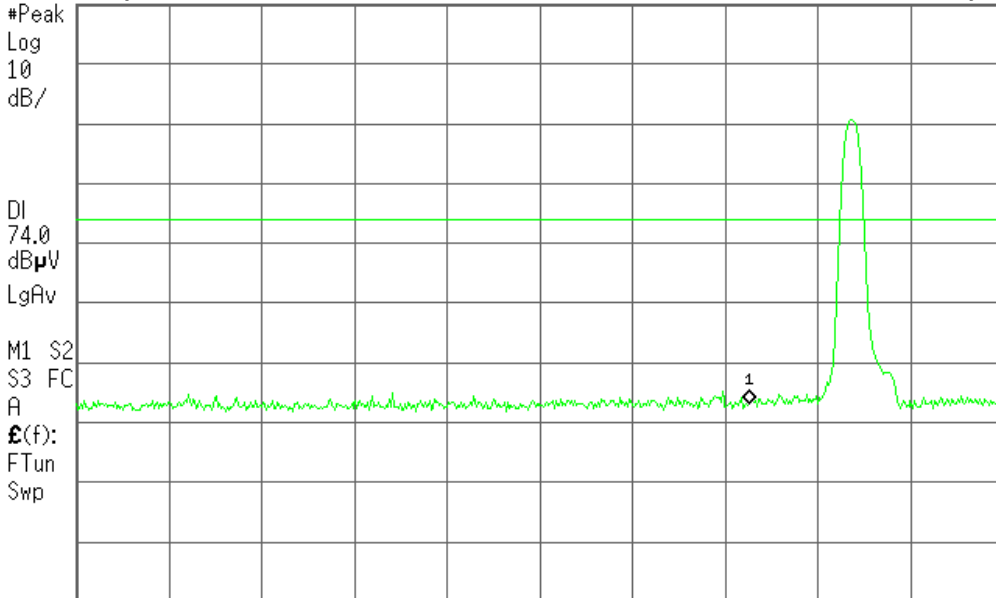
R T

Mkr1 2.390 0 GHz

43.23 dB $\mu$ V

Ref 110 dB $\mu$ V

Atten 20 dB



Start 2.310 0 GHz

#Res BW 1 MHz

#VBW 1 MHz

Stop 2.420 0 GHz

Sweep 1 ms (601 pts)

Detector mode: Average

Agilent 08:16:01 Mar 11, 2011

Polarity: Horizontal

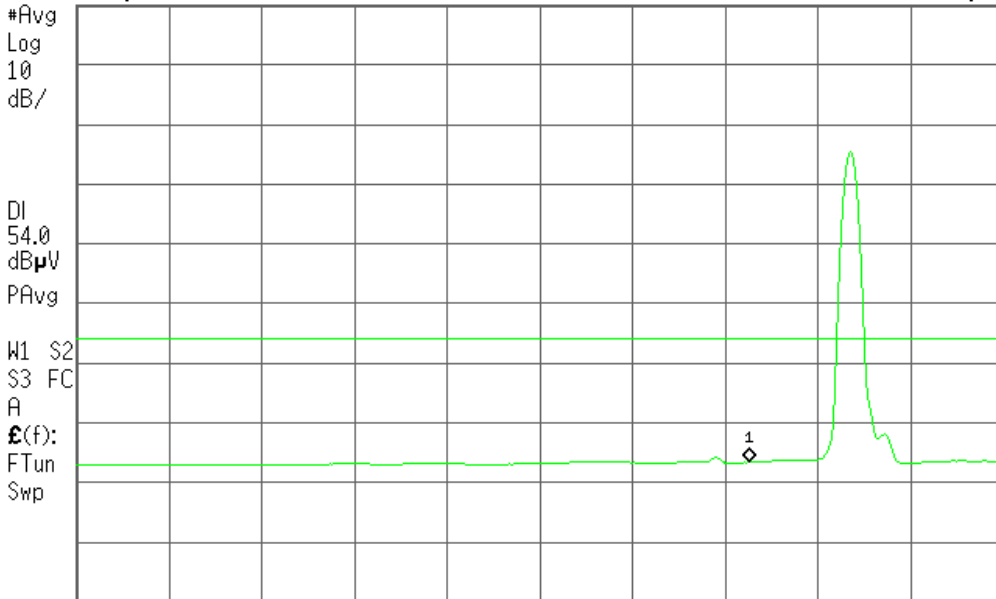
R T

Mkr1 2.390 0 GHz

33.42 dB $\mu$ V

Ref 110 dB $\mu$ V

Atten 20 dB



Start 2.310 0 GHz

#Res BW 1 MHz

#VBW 10 Hz

Stop 2.420 0 GHz

Sweep 27.12 s (601 pts)

CH High :

Detector mode: Peak

Agilent 08:18:43 Mar 11, 2011

Polarity: Horizontal

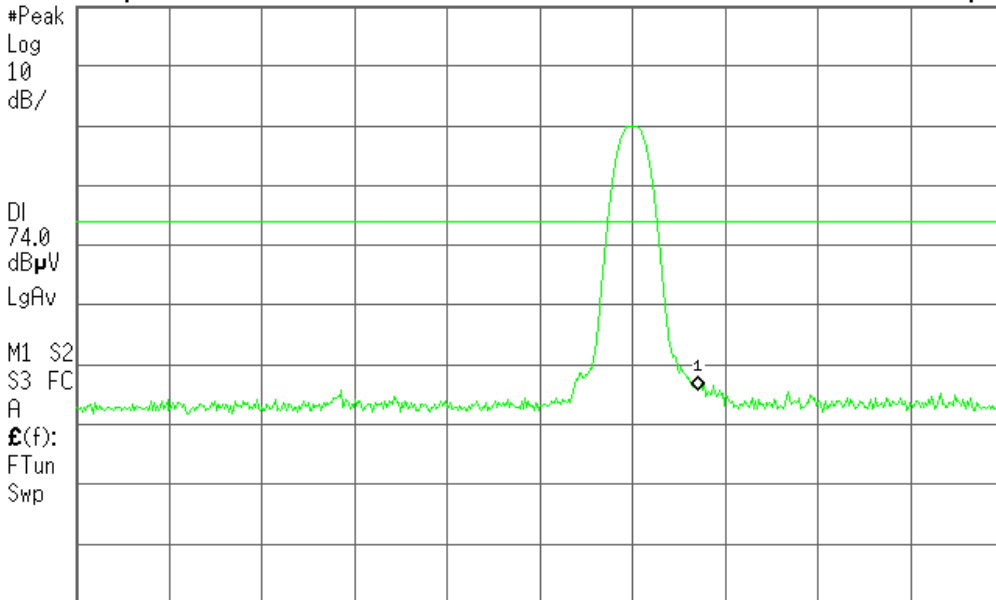
R T

Mkr1 2.483 50 GHz

45.87 dB $\mu$ V

Ref 110 dB $\mu$ V

Atten 20 dB



Start 2.450 00 GHz

Stop 2.500 00 GHz

#Res BW 1 MHz

#VBW 1 MHz

Sweep 1 ms (601 pts)

Detector mode: Average

Agilent 08:19:25 Mar 11, 2011

Polarity: Horizontal

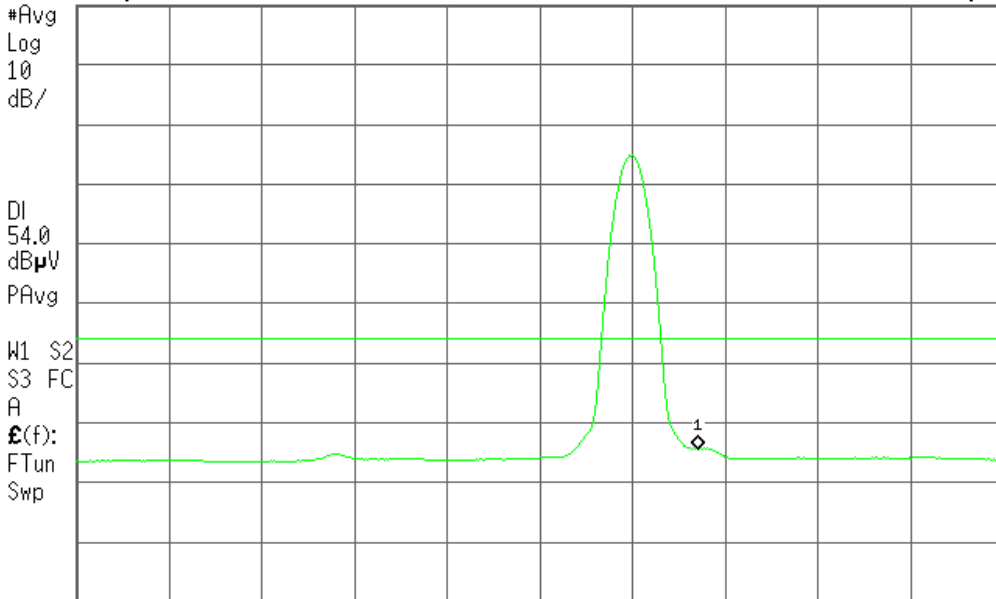
R T

Mkr1 2.483 50 GHz

35.65 dB $\mu$ V

Ref 110 dB $\mu$ V

Atten 20 dB



Start 2.450 00 GHz

Stop 2.500 00 GHz

#Res BW 1 MHz

#VBW 10 Hz

Sweep 12.33 s (601 pts)

CH Low :

Detector mode: Peak

Agilent 08:29:43 Mar 11, 2011

Polarity: Vertical

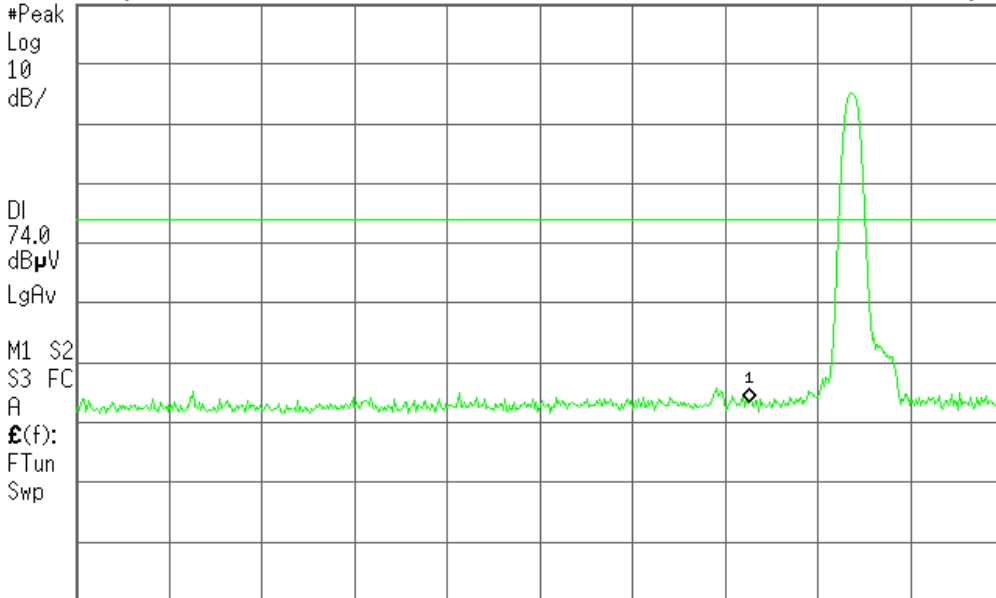
R T

Mkr1 2.390 0 GHz

43.31 dB $\mu$ V

Ref 110 dB $\mu$ V

Atten 20 dB



Start 2.310 0 GHz

#Res BW 1 MHz

#VBW 1 MHz

Stop 2.420 0 GHz

Sweep 1 ms (601 pts)

Detector mode: Average

Agilent 08:30:33 Mar 11, 2011

Polarity: Vertical

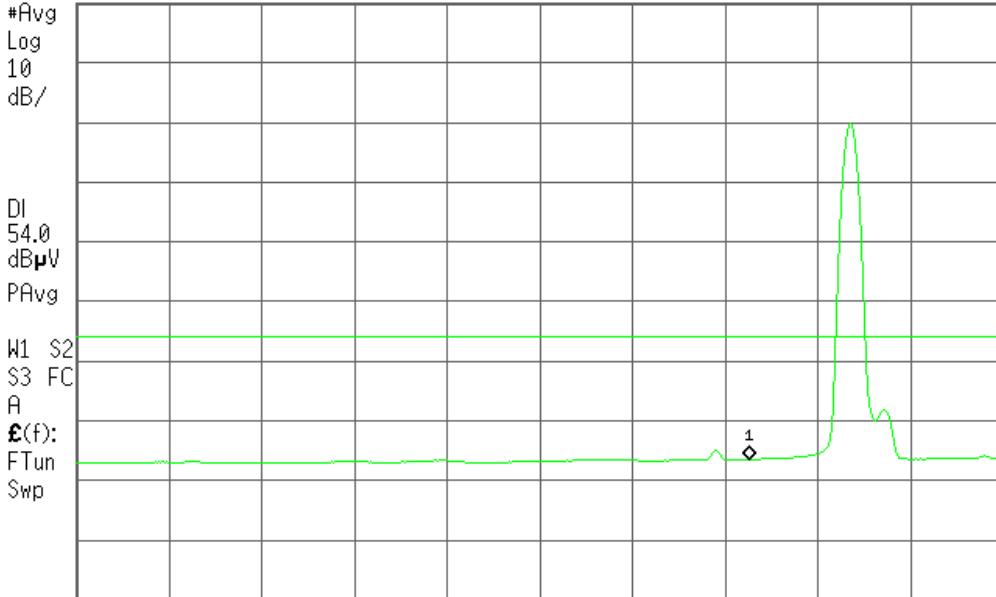
R T

Mkr1 2.390 0 GHz

33.56 dB $\mu$ V

Ref 110 dB $\mu$ V

Atten 20 dB



Start 2.310 0 GHz

#Res BW 1 MHz

#VBW 10 Hz

Stop 2.420 0 GHz

Sweep 27.12 s (601 pts)

CH High :

Detector mode: Peak

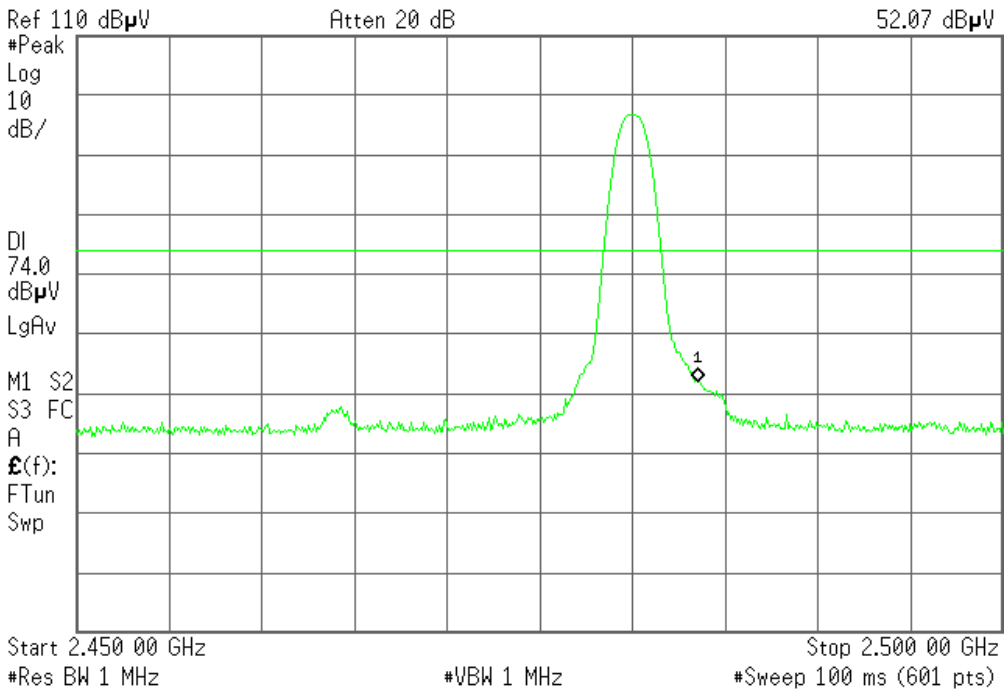
Agilent 08:27:36 Mar 11, 2011

Polarity: Vertical

R T

Mkr1 2.483 50 GHz

52.07 dB $\mu$ V



Detector mode: Average

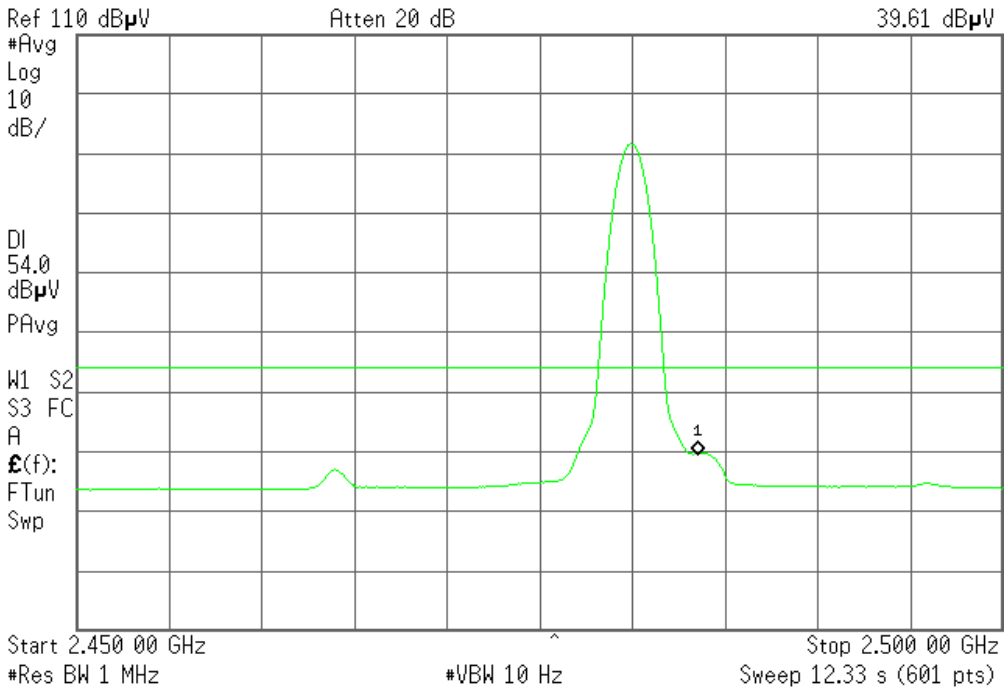
Agilent 08:28:13 Mar 11, 2011

Polarity: Vertical

R T

Mkr1 2.483 50 GHz

39.61 dB $\mu$ V



## 9 Antenna Requirement

### 9.1 Standard Requirement

An intentional radiator shall be designed to ensure that no antenna other than that furnished by the responsible party shall be used with the device. The use of a permanently attached antenna or of an antenna that uses a unique coupling to the intentional radiator shall be considered sufficient to comply with the provisions of this Section. The manufacturer may design the unit so that a broken antenna can be replaced by the user, but the use of a standard antenna jack or electrical connector is prohibited.

### 9.2 Antenna Connected Construction

The directional gains of antenna used for transmitting is 0 dBi, and the antenna connector is designed with permanent attachment and no consideration of replacement. Please see EUT photo for details.

### 9.3 Result

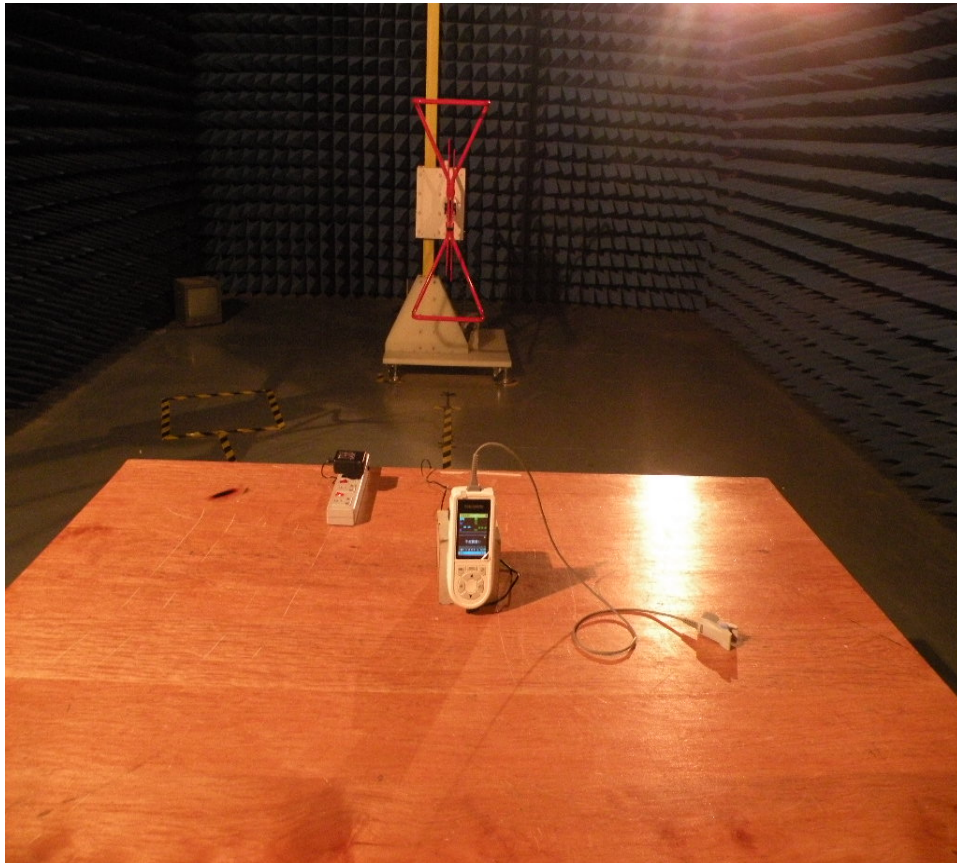
The EUT antenna is integral Antenna. It comply with the standard requirement.



## 10 Photographs of Test Setup

### Photographs-Radiated Emission Test Setup in Chamber

Below 1G



Above 1G



## Photographs-Conducted Emission Test Setup



## 11 Photographs of EUT

**Figure 1**

Photo of EUT

Front View [ ]

Rear View [ ]


Full View [✓]

Bottom View [ ]

Left View [ ]

Right View [ ]

Full View [ ]



The photograph shows three items on a blue surface: a black power adapter with a power cord, a grey cable with a connector, and a white handheld device with a screen and buttons. A ruler is placed vertically and horizontally for scale. The device has a screen at the top and a control panel with an 'OK' button, a 'PRINT' button, a directional pad, and other function buttons.

**Figure 2**

Photo of EUT

Front View [ ]

Rear View [ ]


Top View [✓]

Bottom View [ ]

Left View [ ]

Right View [ ]

Full View [ ]



This is a close-up photograph of the white handheld device. The screen is at the top and displays the text 'PULSE OXIMETER'. Below the screen is a control panel with an 'OK' button, a 'PRINT' button, a directional pad, and other function buttons. A ruler is placed vertically and horizontally for scale.

**Figure 3**

Photo of EUT

Front View [ ]

Rear View [ ]

Top View [ ]

Bottom View [ ✓ ]

Left View [ ]

Right View [ ]

Full View [ ]



**Figure 4**

Photo of EUT

Front View [ ✓ ]

Rear View [ ]

Top View [ ]

Bottom View [ ]

Left View [ ]

Right View [ ]

Internal View [ ]



**Figure 5**

Photo of EUT

Front View [ ]

Rear View [ ]

Top View [ ]

Bottom View [ ]

Left View [✓]

Right View [ ]

Internal View [ ]



**Figure 6**

Photo of EUT

Front View [ ]

Rear View [✓]

Top View [ ]

Bottom View [ ]

Left View [ ]

Right View [ ]

Internal View [ ]



**Figure 7**

Photo of EUT

Front View [ ]

Rear View [ ]

Top View [ ]

Bottom View [ ]

Left View [ ]

Right View [✓]

Internal View [ ]



**Figure 8**

Photo of EUT

Front View [ ]

Rear View [ ]

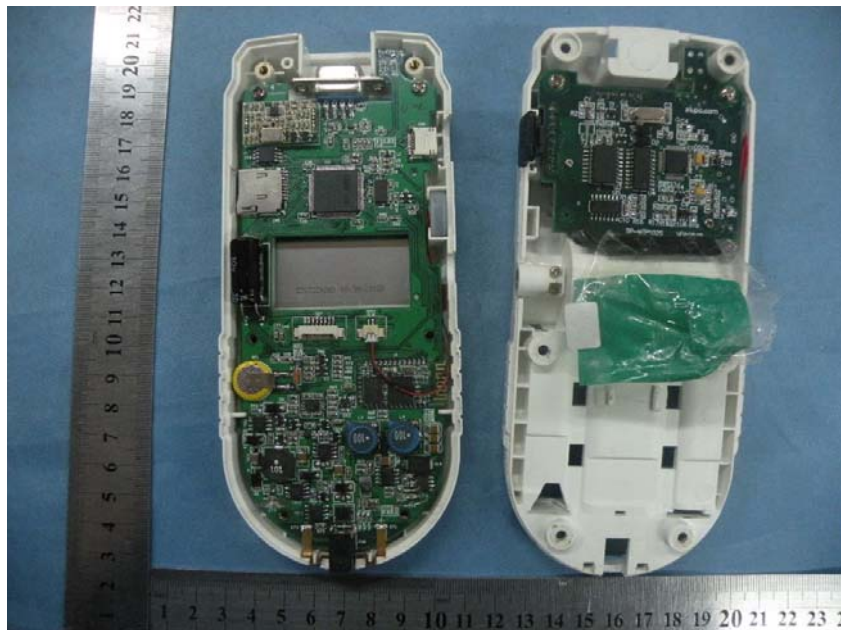
Top View [ ]

Bottom View [ ]

Left View [ ]

Right View [ ]

Internal View [✓]



**Figure 9**

Photo of EUT

Front View [ ]

Rear View [ ]

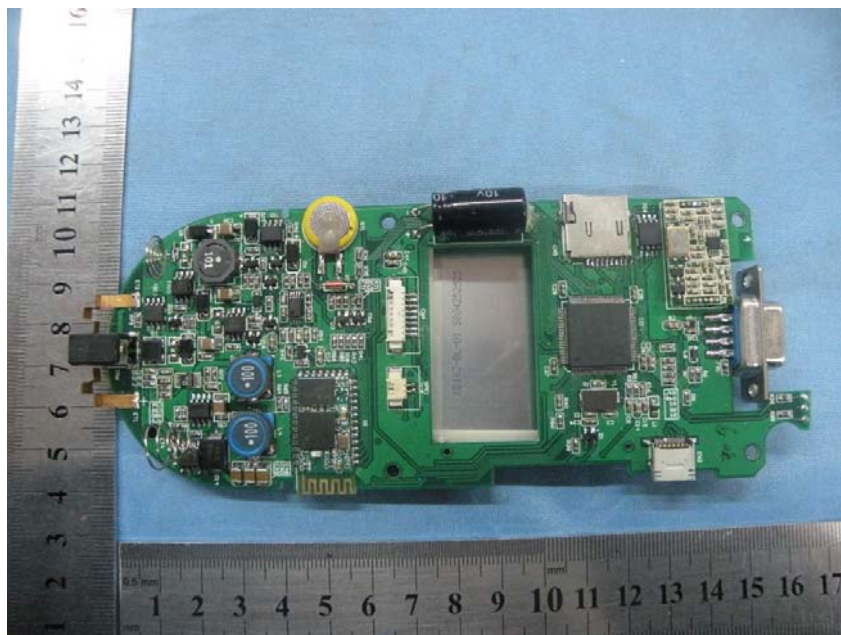
Top View [ ]

Bottom View [ ]

Left View [ ]

Right View [ ]

Internal View [  ]



**Figure 10**

Photo of EUT

Front View [ ]

Rear View [ ]

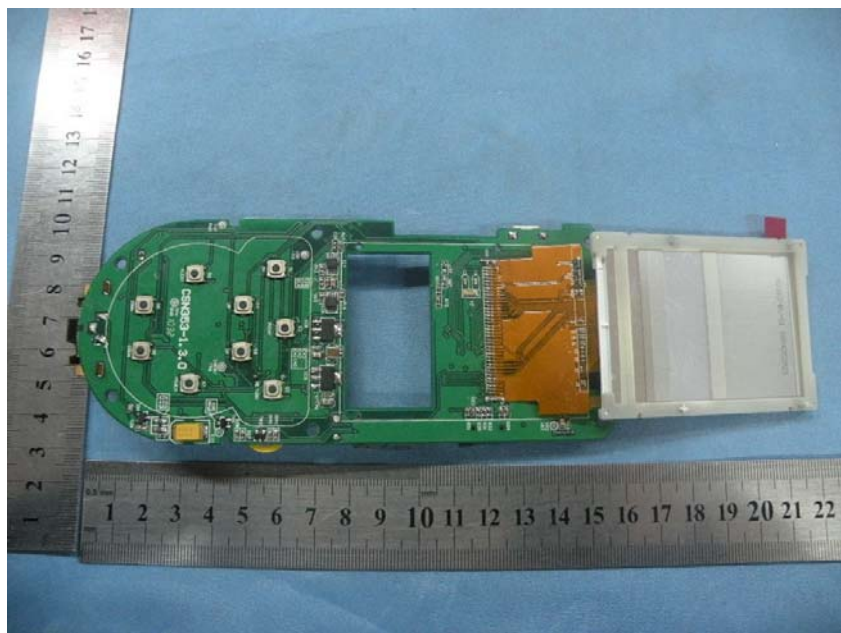
Top View [ ]

Bottom View [ ]

Left View [ ]

Right View [ ]

Internal View [  ]





**Figure 11**

Photo of EUT

Front View [ ]

Rear View [ ]

Top View [ ]

Bottom View [ ]

Left View [ ]

Right View [ ]

Internal View [  ]



**Figure 12**

Photo of EUT

Front View [ ]

Rear View [ ]

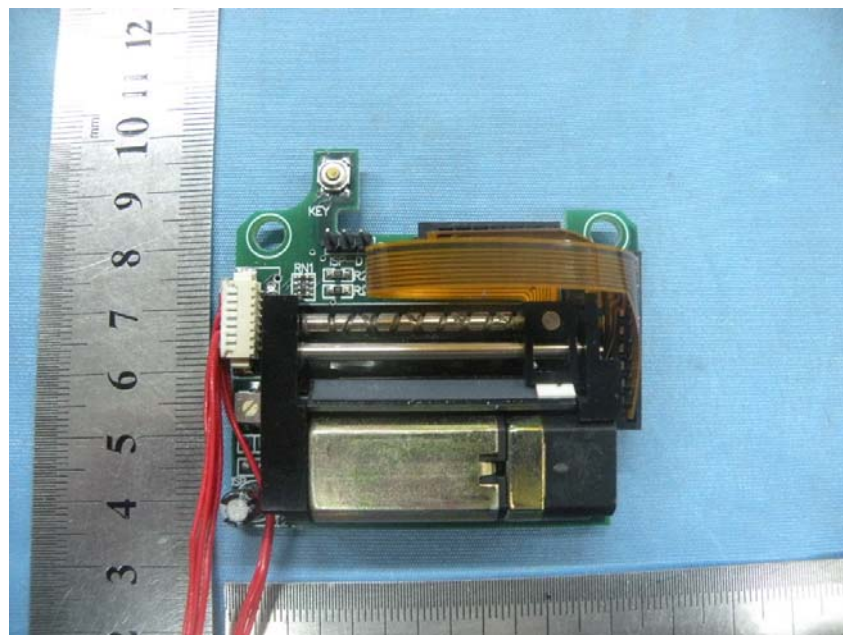
Top View [ ]

Bottom View [ ]

Left View [ ]

Right View [ ]

Internal View [  ]



**Figure 13**

Photo of EUT

Front View [ ]

Rear View [ ]

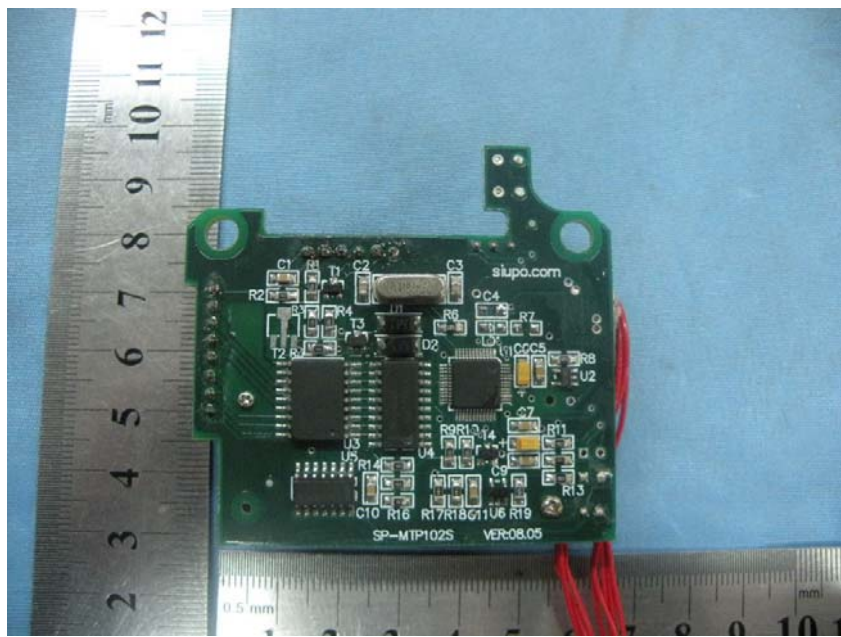
Top View [ ]

Bottom View [ ]

Left View [ ]

Right View [ ]

Internal View [  ]



-----END OF THE REPORT-----