

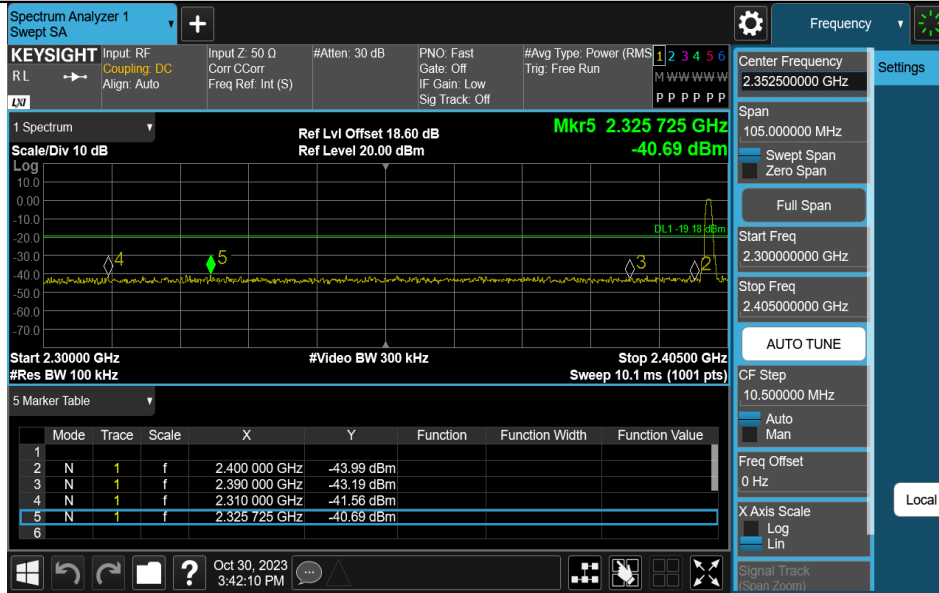
Appendix E: Band edge measurements

Test Result

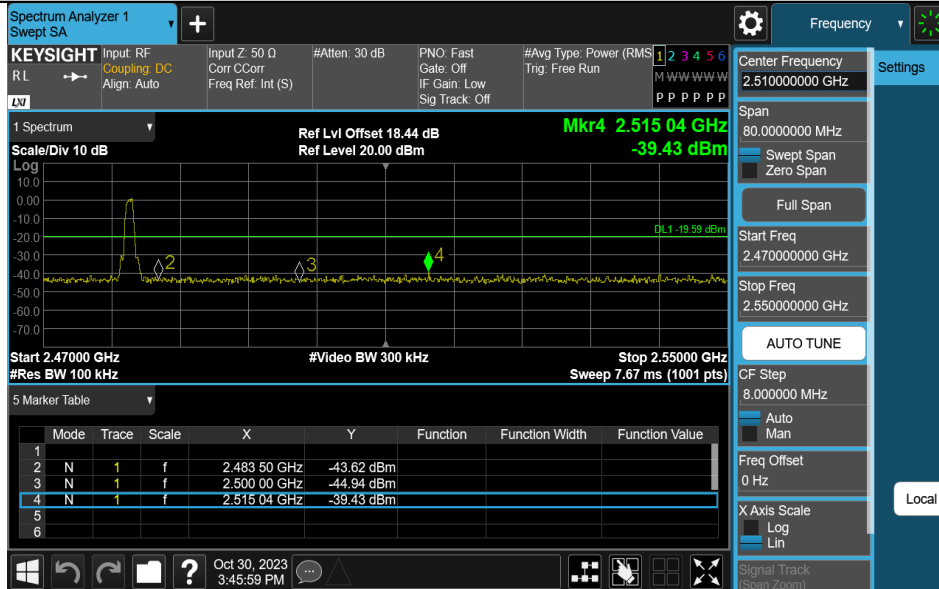
Test Mode	Antenna	Ch Name	Frequency[MHz]	Ref Level[dBm]	Result[dBm]	Limit[dBm]	Verdict
BLE_1M	Ant1	Low	2402	0.82	-40.69	≤ -19.18	PASS
BLE_1M	Ant1	High	2480	0.41	-39.43	≤ -19.59	PASS
BLE_2M	Ant1	Low	2402	-0.03	-39.45	≤ -20.03	PASS
BLE_2M	Ant1	High	2480	-0.43	-41.15	≤ -20.43	PASS

Test Graphs

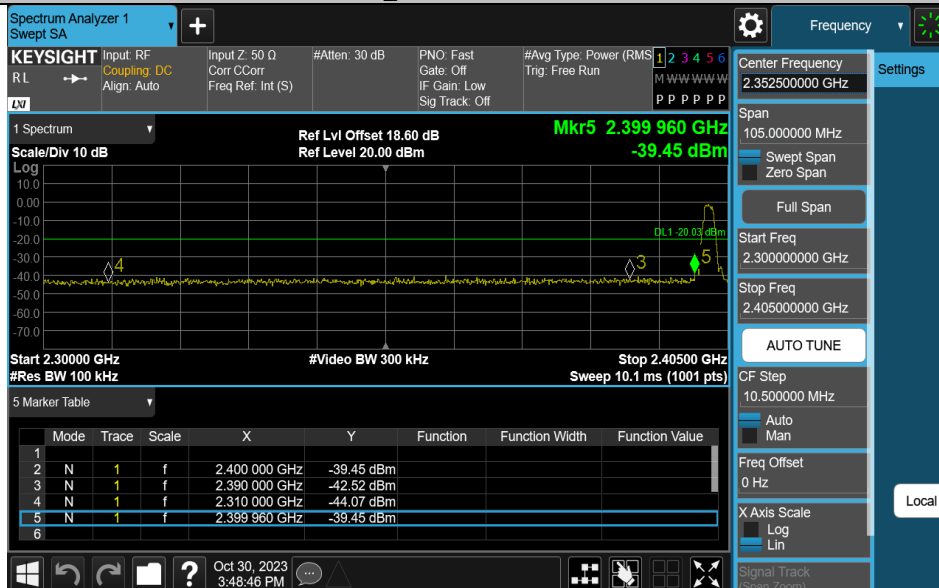
BLE_1M-Ant1-2402-PASS



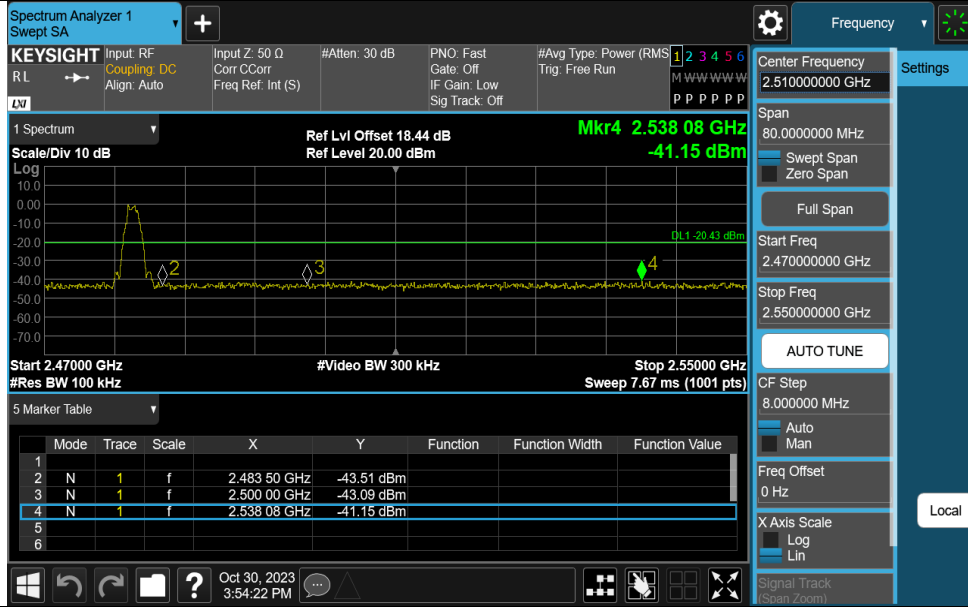
BLE_1M-Ant1-2480-PASS



BLE_2M-Ant1-2402-PASS



BLE_2M-Ant1-2480-PASS



Appendix F: Conducted Spurious Emission Test Result

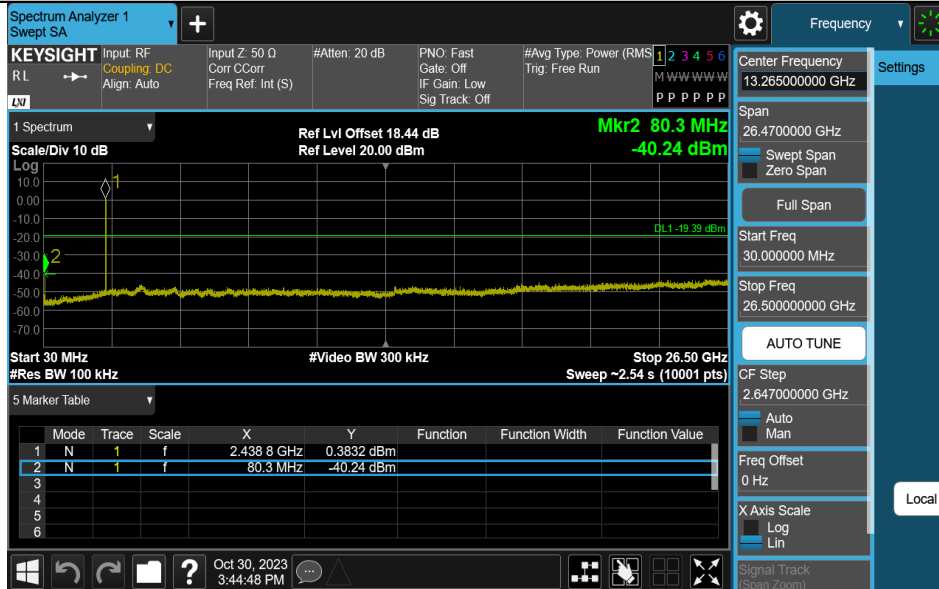
TestMode	Antenna	Frequency[MHz]	FreqRange [MHz]	RefLevel [dBm]	Result[dBm]	Limit[dBm]	Verdict
BLE_1M	Ant1	2402	30~26500	0.82	-40.62	≤-19.18	PASS
BLE_1M	Ant1	2440	30~26500	0.61	-40.24	≤-19.39	PASS
BLE_1M	Ant1	2480	30~26500	0.41	-40.45	≤-19.59	PASS
BLE_2M	Ant1	2402	30~26500	-0.03	-41.07	≤-20.03	PASS
BLE_2M	Ant1	2440	30~26500	-0.11	-40.27	≤-20.11	PASS
BLE_2M	Ant1	2480	30~26500	-0.43	-40.33	≤-20.43	PASS

Test Graphs

BLE_1M-Ant1-2402-30~26500-PASS



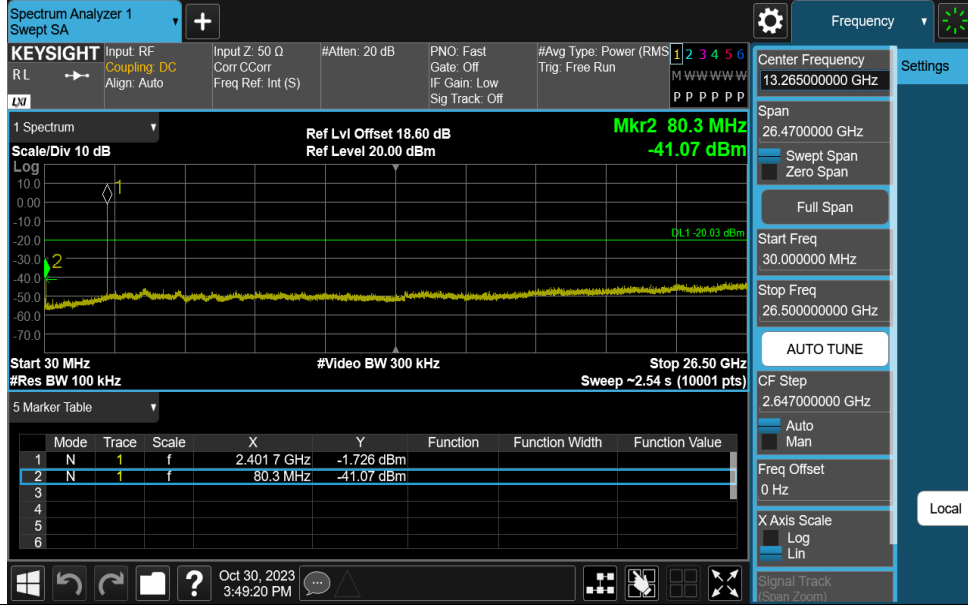
BLE_1M-Ant1-2440-30~26500-PASS



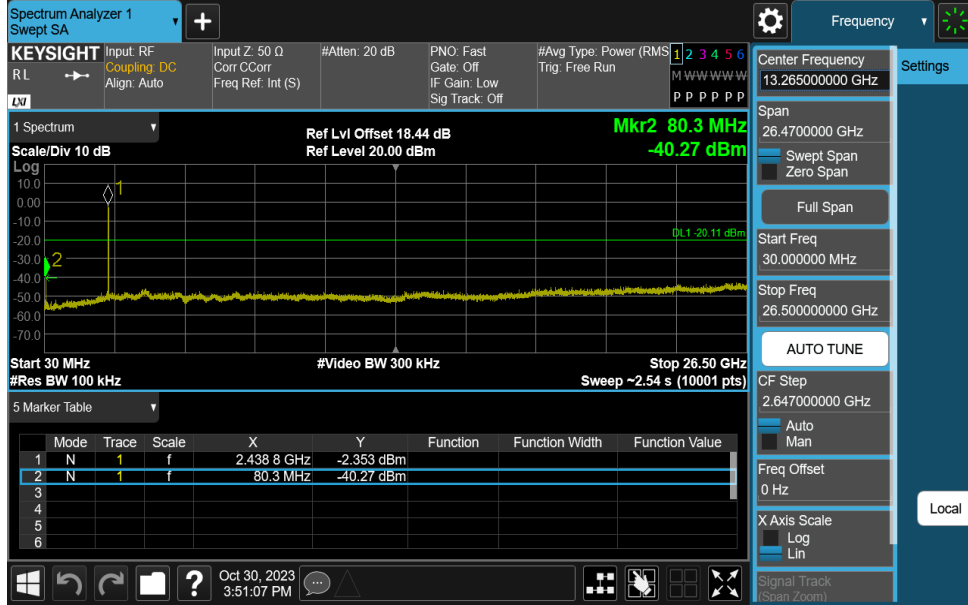
BLE_1M-Ant1-2480-30~26500-PASS



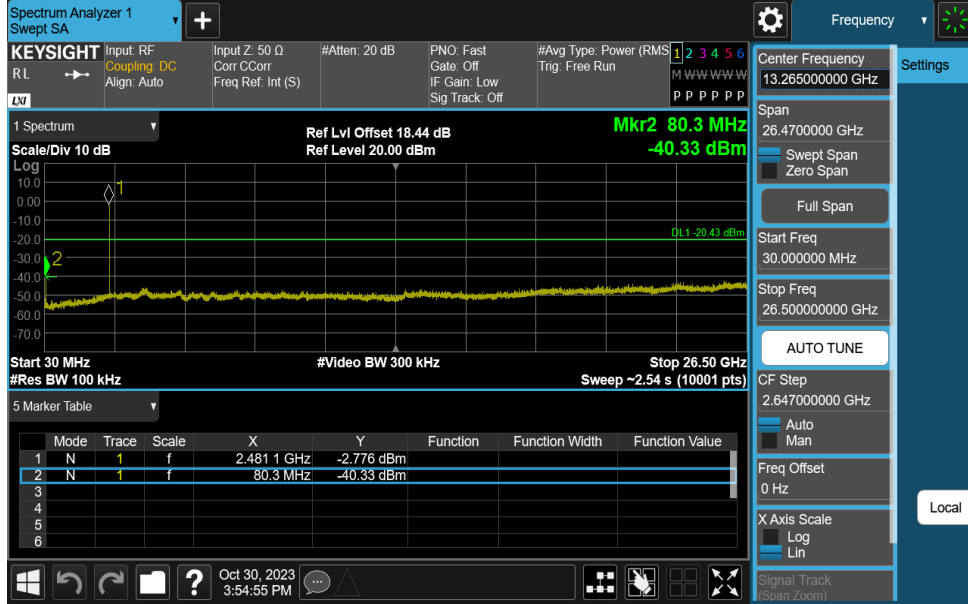
BLE_2M-Ant1-2402-30~26500-PASS



BLE_2M-Ant1-2440-30~26500-PASS



BLE_2M-Ant1-2480-30~26500-PASS

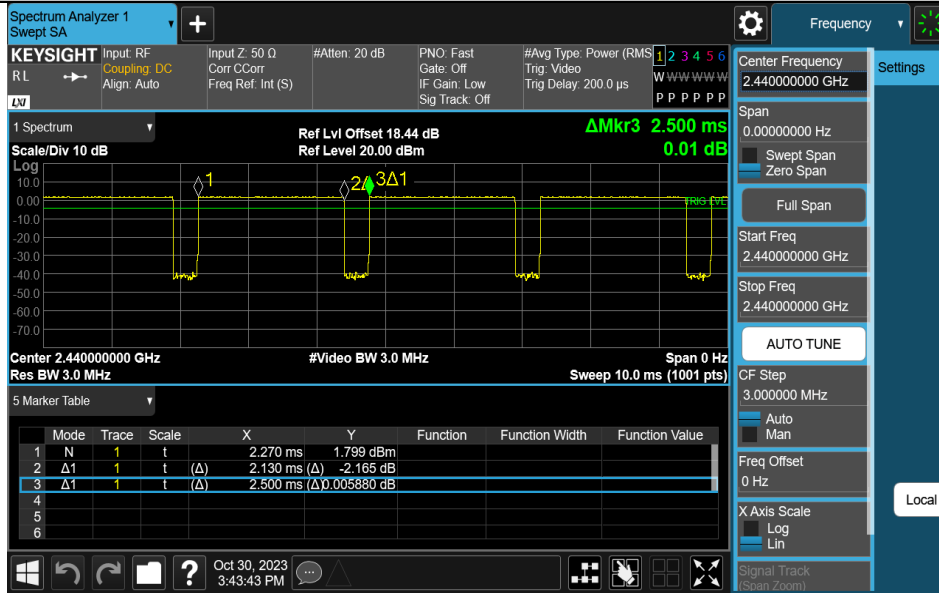


Appendix G: Duty Cycle Test Result

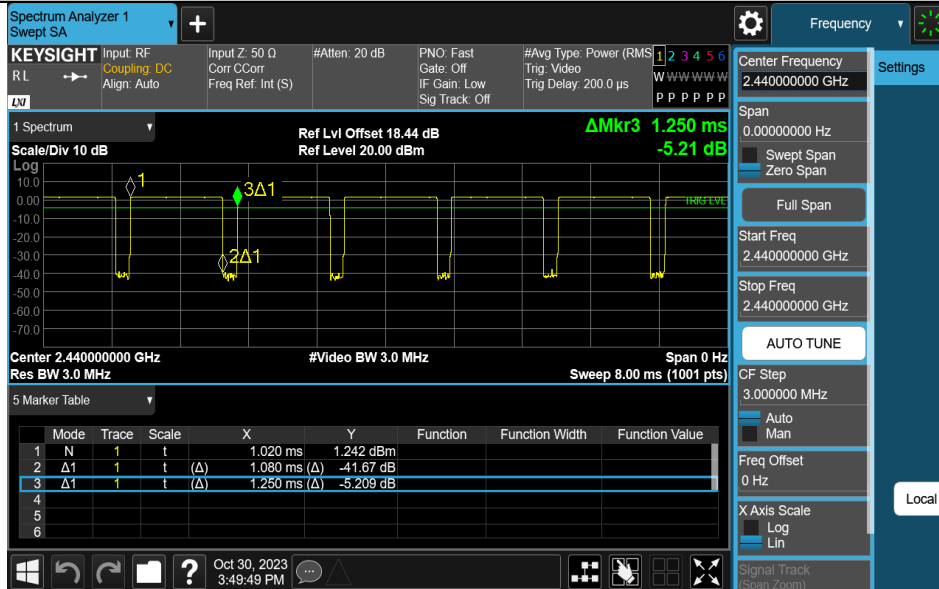
TestMode	Antenna	Frequency[MHz]	ON Time [ms]	Period [ms]	Duty Cycle [%]	Duty Cycle Factor[dB]
BLE_1M	Ant1	2440	2.13	2.50	85.20	0.70
BLE_2M	Ant1	2440	1.08	1.25	86.40	0.63

Test Graphs

NTNV-BLE_1M-Ant1-2440

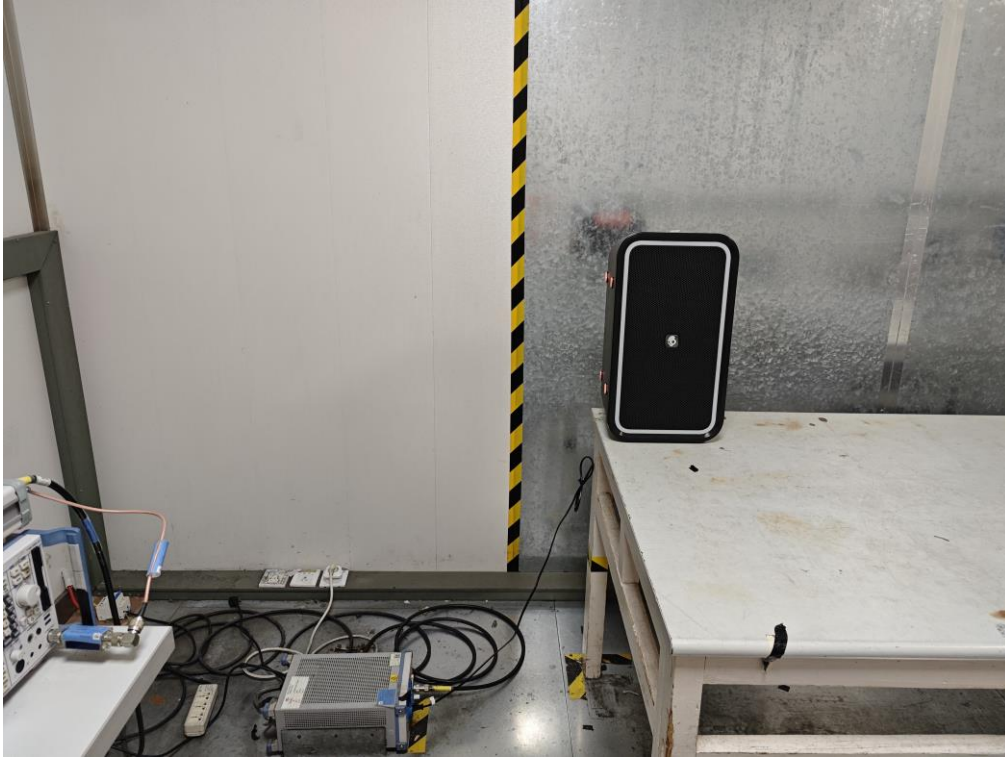


NTNV-BLE_2M-Ant1-2440

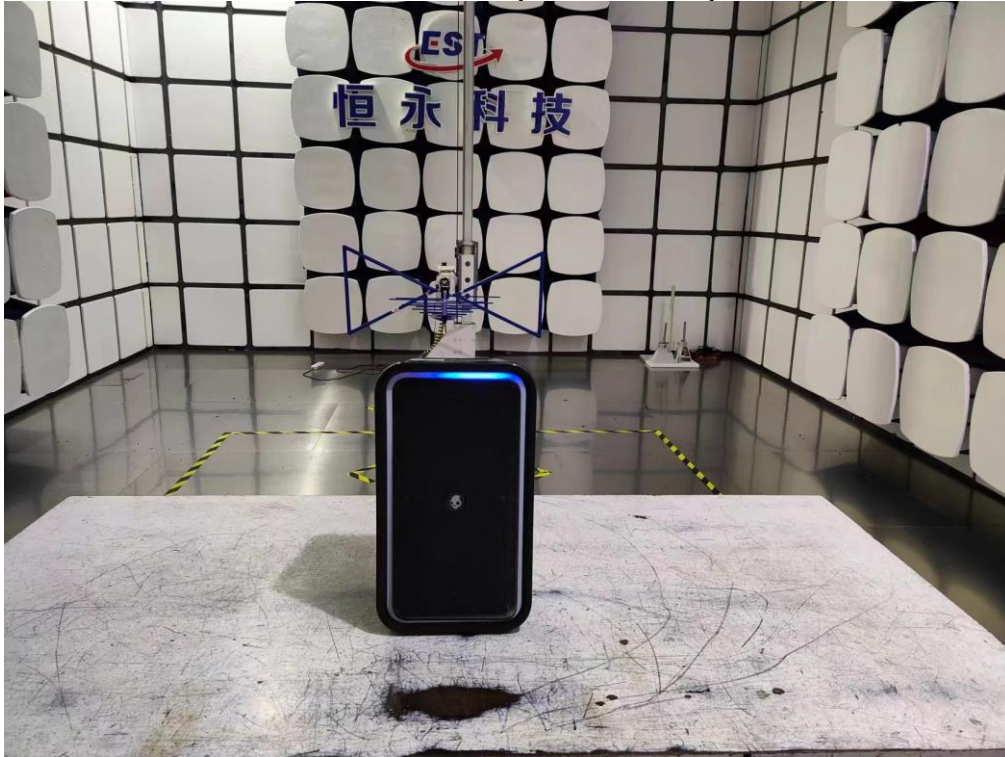


12. TEST SETUP PHOTO

Conducted Test



Radiated Test (Below 1GHz)



Radiated Test (Above 1GHz)



13. EUT PHOTO

External Photos
M/N: 2SKSK1851



External Photos
M/N: 2SKSK1851



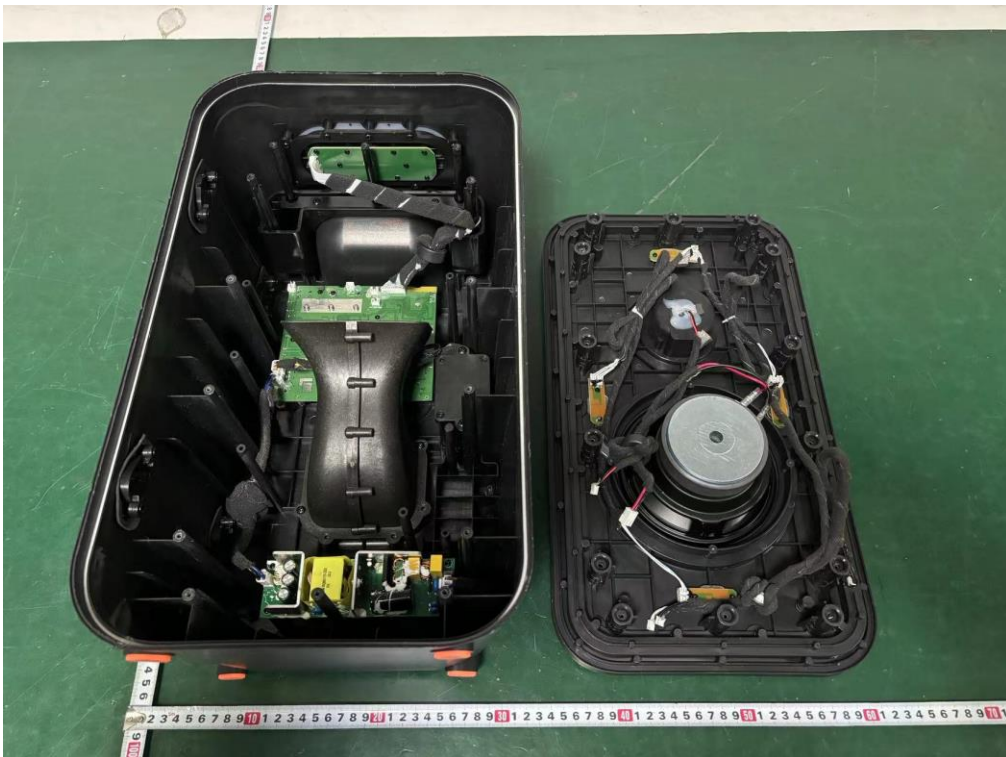
External Photos
M/N: 2SKSK1851



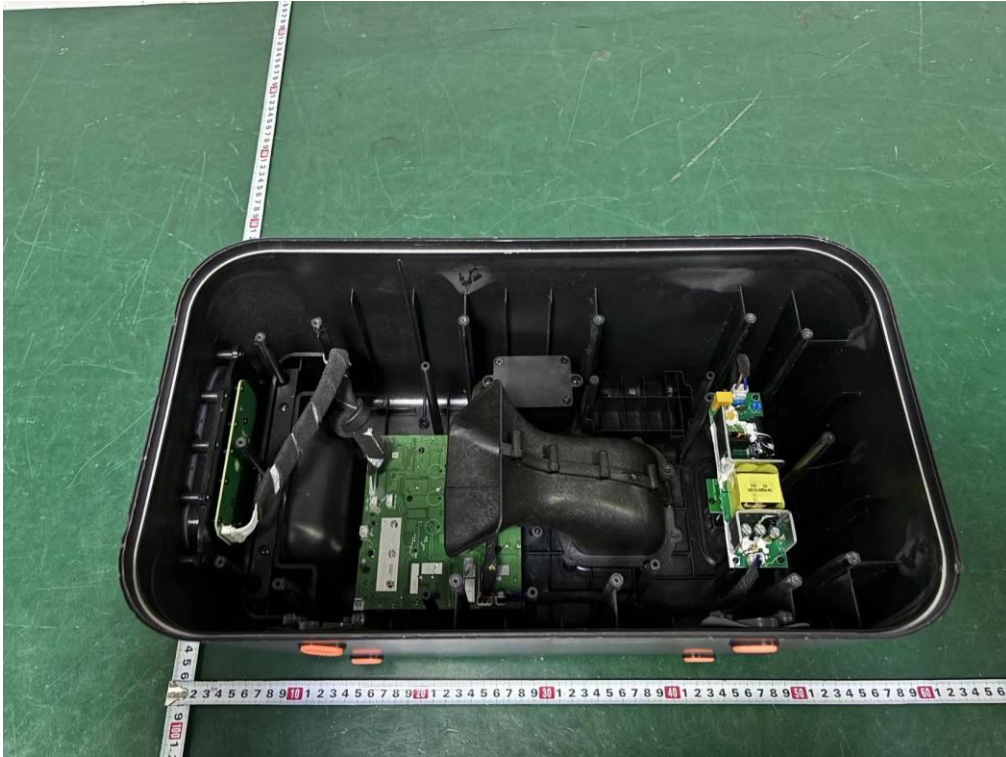
External Photos
M/N: 2SKSK1851



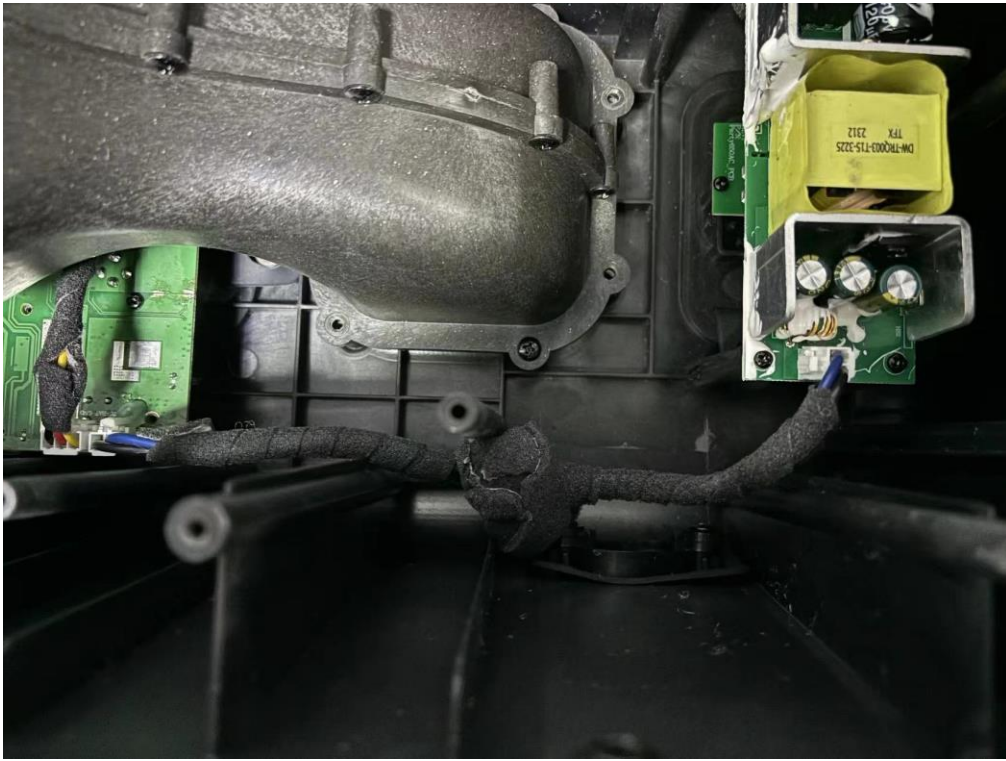
Internal Photos
M/N: 2SKSK1851



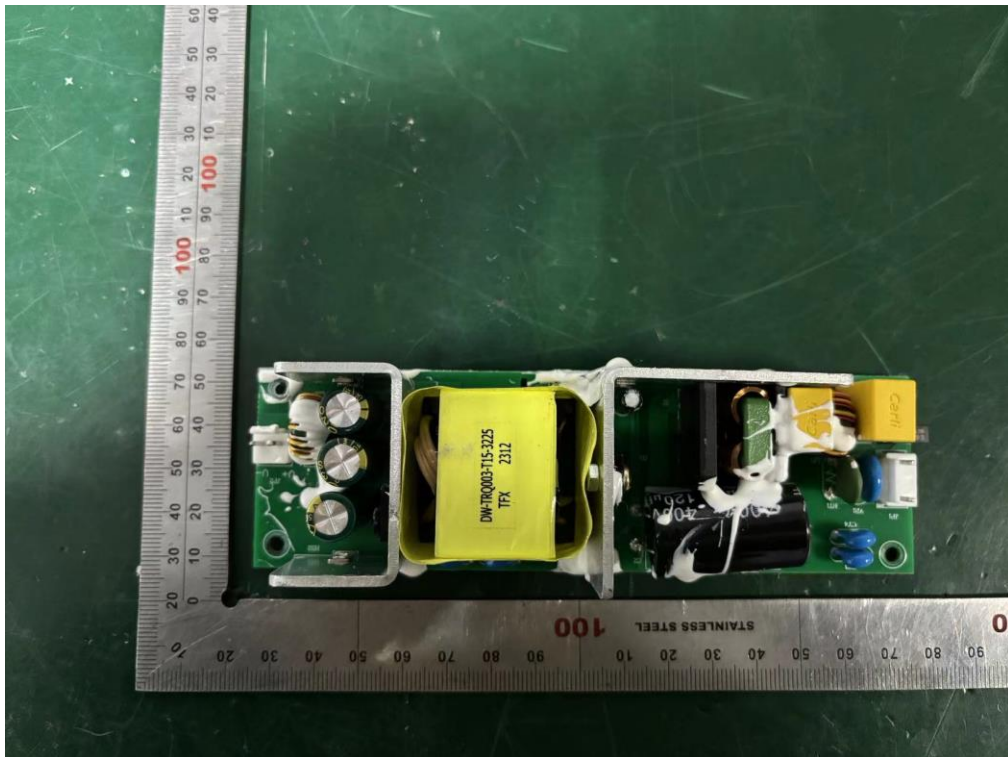
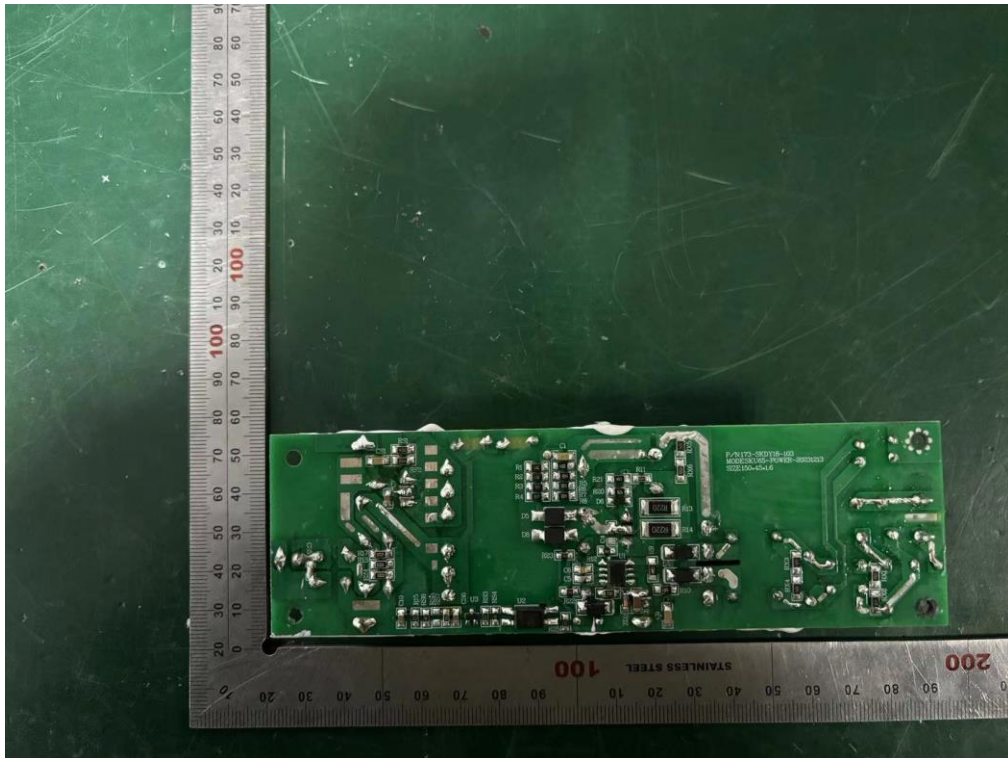
Internal Photos
M/N: 2SKSK1851



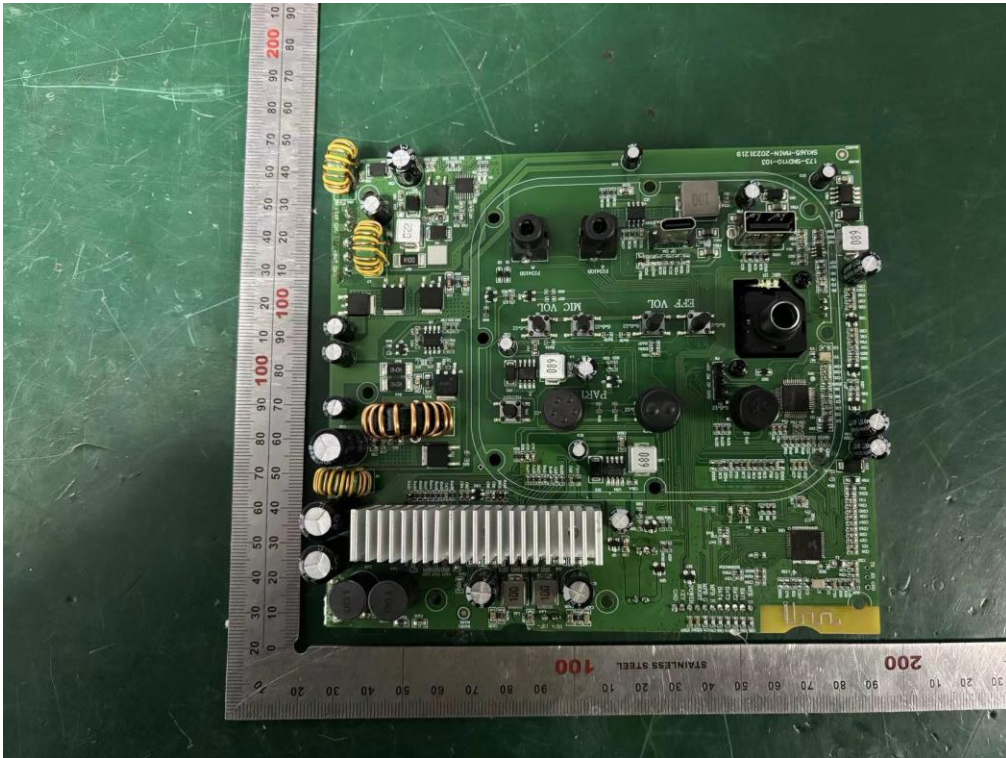
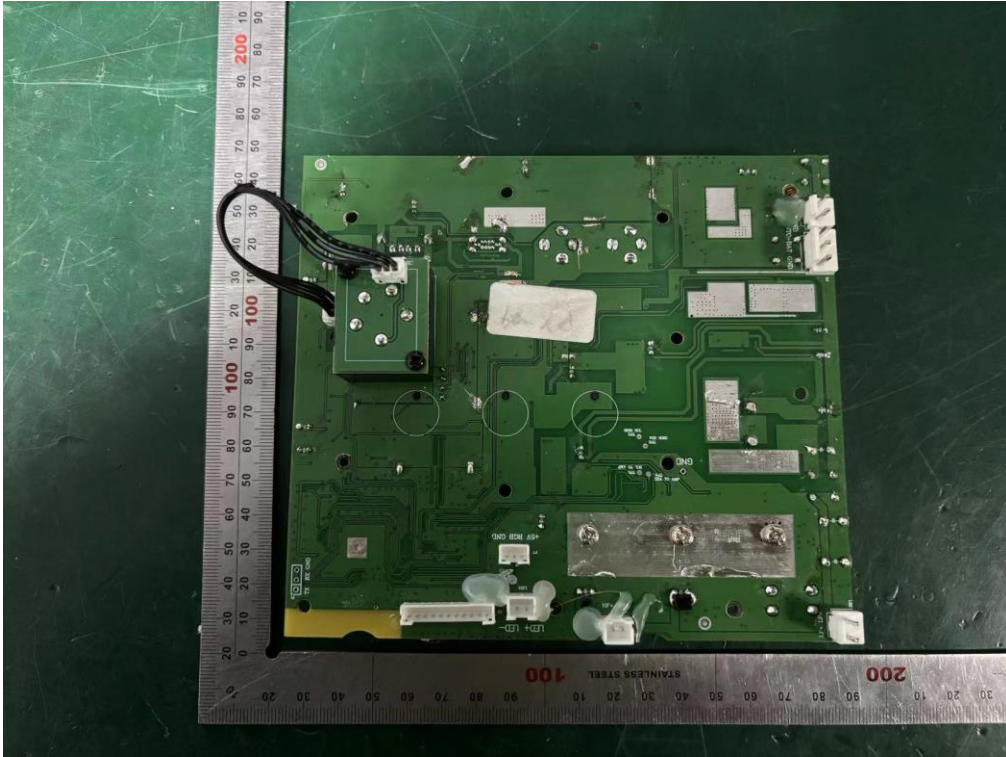
Internal Photos
M/N: 2SKSK1851



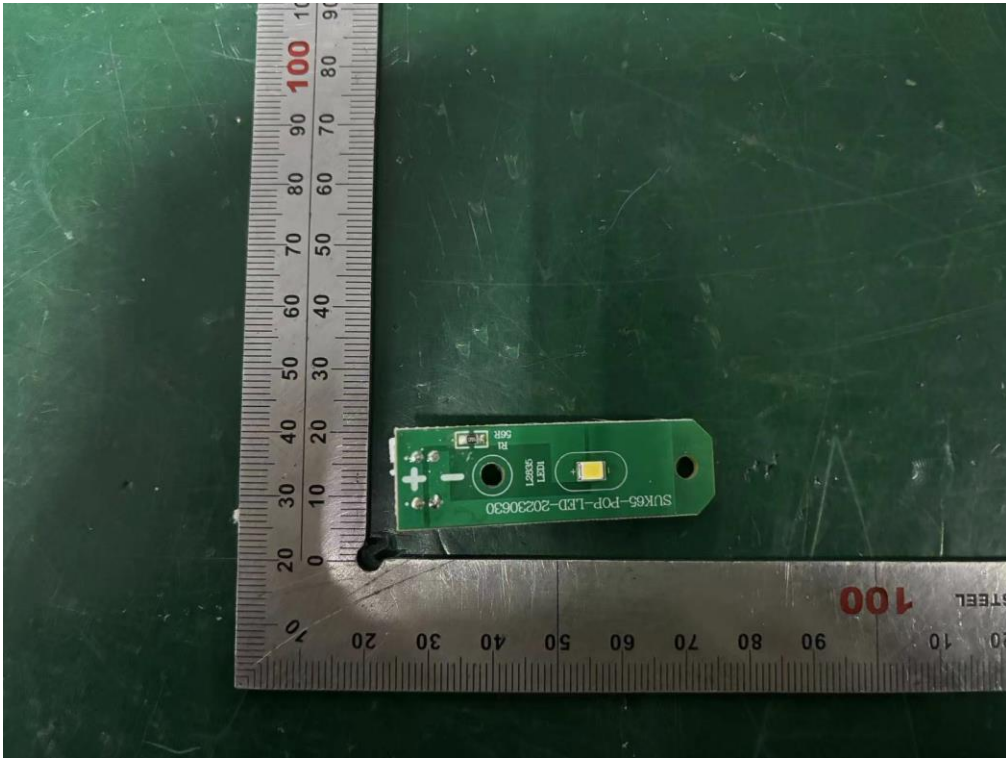
Internal Photos M/N: 2SKSK1851



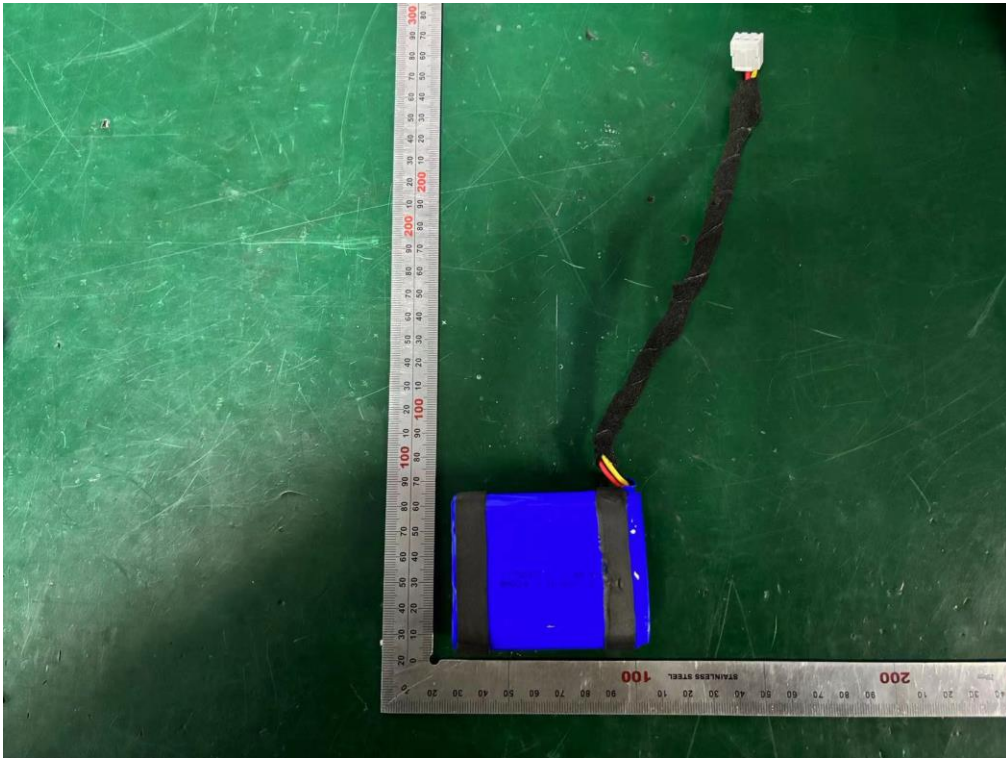
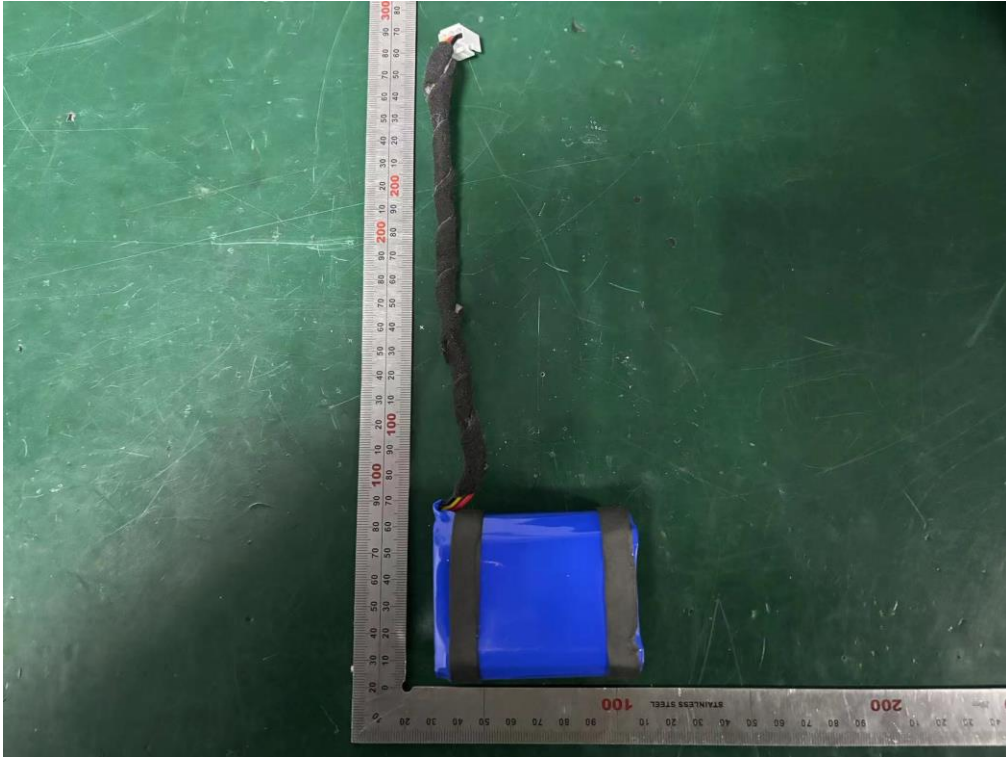
Internal Photos
M/N: 2SKSK1851



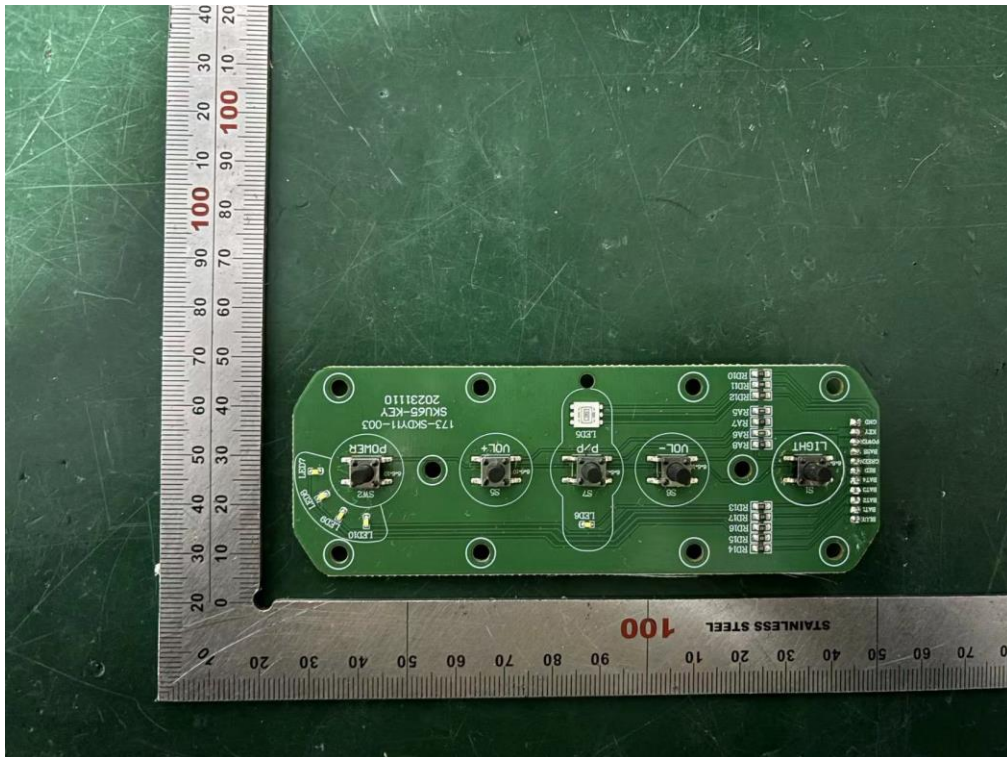
Internal Photos
M/N: 2SKSK1851



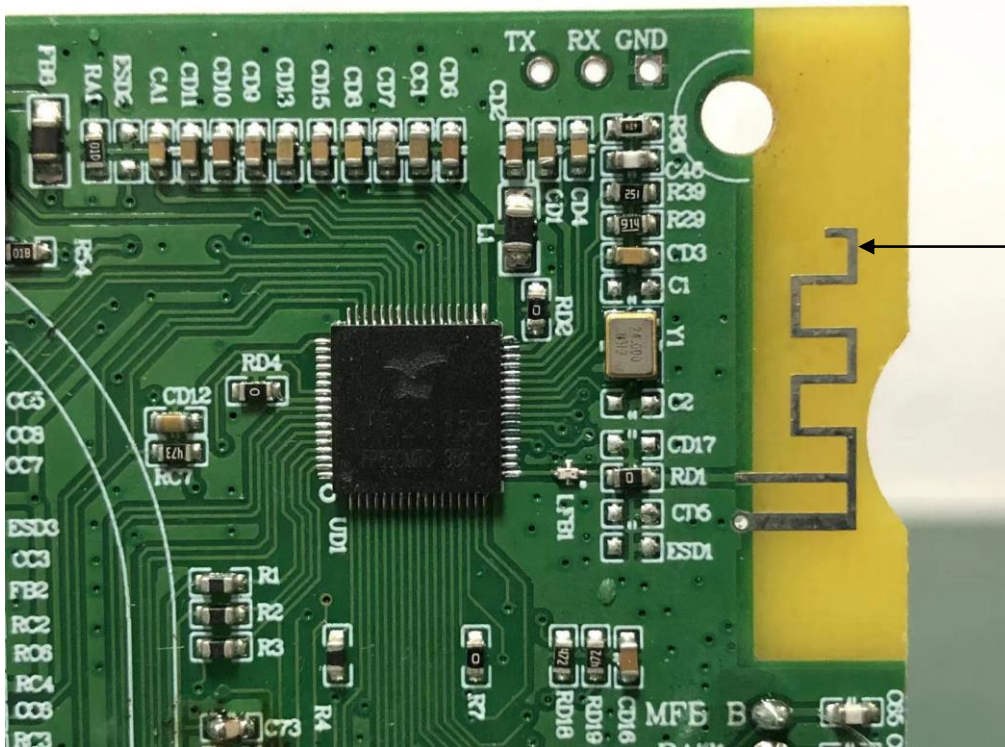
Internal Photos
M/N: 2SKSK1851



Internal Photos
M/N: 2SKSK1851



Internal Photos M/N: 2SKSK1851



PCB Antenna