

FCC TEST REPORT

Client Name : Lifeworks Technology Group LLC

Address : 530 7th Avenue, 21st Floor, New York, NY, 10018, USA

Product Name : DNA WIRELESS CHARGER

Date : Jul. 07, 2022



Shenzhen Anbotek Compliance Laboratory Limited

Contents

1. General Information	4
1.1. Client Information	4
1.2. Description of Device (EUT)	4
1.3. Auxiliary Equipment Used During Test	5
1.4. Description of Test Modes	5
1.5. Description Of Test Setup	6
1.6. Test Equipment List	7
1.7. Measurement Uncertainty	8
1.8. Description of Test Facility	8
2. Summary of Test Results	9
3. Conducted Emission Test	10
3.1. Test Standard and Limit	10
3.2. Test Setup	10
3.3. Test Procedure	10
3.4. Test Data	10
4. Radiation Spurious Emission and Band Edge	13
4.1. Test Standard and Limit	13
4.2. Test Setup	13
4.3. Test Procedure	14
4.4. Test Data	15
5. Antenna Requirement	20
5.1. Test Standard and Requirement	20
5.2. Antenna Connected Construction	20
APPENDIX I -- TEST SETUP PHOTOGRAPH	21
APPENDIX II -- EXTERNAL PHOTOGRAPH	23
APPENDIX III -- INTERNAL PHOTOGRAPH	27

TEST REPORT

Applicant : Lifeworks Technology Group LLC
Manufacturer : Lifeworks Technology Group LLC
Product Name : DNA WIRELESS CHARGER
Model No. : 2MNQI0728, 2MNQI0728B0L2, 2MNQI0728W0L2
Trade Mark : N.A.
Rating(s) : Input: 12V \Rightarrow 1.25A, 5V \Rightarrow 2.0A
Output: 9V \Rightarrow 1.1A, 5V \Rightarrow 1.0A

Test Standard(s) : FCC Part15 Subpart C 2019, Paragraph 15.209

Test Method(s) : ANSI C63.10: 2020

The device described above is tested by Shenzhen Anbotek Compliance Laboratory Limited to determine the maximum emission levels emanating from the device and the severe levels of the device can endure and its performance criterion. The measurement results are contained in this test report and Shenzhen Anbotek Compliance Laboratory Limited is assumed full of responsibility for the accuracy and completeness of these measurements. Also, this report shows that the EUT (Equipment Under Test) is technically compliant with the FCC Part 15 Subpart C requirements.

This report applies to above tested sample only and shall not be reproduced in part without written approval of Shenzhen Anbotek Compliance Laboratory Limited.

Date of Receipt

Jun. 15, 2022

Date of Test

Jun. 15~23, 2022

Prepared by



(Ella Liang)

Approved & Authorized Signer



(Kingkong Jin)

1. General Information

1.1. Client Information

Applicant	:	Lifeworks Technology Group LLC
Address	:	530 7th Avenue, 21st Floor, New York, NY, 10018, USA
Manufacturer	:	Lifeworks Technology Group LLC
Address	:	530 7th Avenue, 21st Floor, New York, NY, 10018, USA
Factory	:	Lifeworks Technology Group LLC
Address	:	530 7th Avenue, 21st Floor, New York, NY, 10018, USA

1.2. Description of Device (EUT)

Product Name	:	DNA WIRELESS CHARGER	
Model No.	:	2MNQI0728, 2MNQI0728B0L2, 2MNQI0728W0L2 (Note: All samples are the same except the appearance, so we prepare "2MNQI0728" for test only.)	
Trade Mark	:	N.A.	
Test Power Supply	:	AC 120V, 60Hz for adapter	
Test Sample No.	:	1-2-1(Normal Sample), 1-2-1(Engineering Sample)	
Product Description	:	Operation Frequency:	110.1-205KHz
		Modulation Type:	ASK
		Antenna Type:	Inductive loop coil Antenna
		Antenna Gain(Peak):	0 dBi
Remark: 1) For a more detailed features description, please refer to the manufacturer's specifications or the User's Manual.			

1.3. Auxiliary Equipment Used During Test

Adapter	:	M/N: AD651P Input: 100-240V~1.5A, 50-60Hz Output: 5V= 3A, 9V= 3A, 10V= 5A, 12V= 3A, 15V= 3A, 20V= 3.25A
---------	---	---

1.4. Description of Test Modes

To investigate the maximum EMI emission characteristics generates from EUT, the test system was pre-scanning tested base on the consideration of following EUT operation mode or test configuration mode which possible have effect on EMI emission level. Each of these EUT operation mode(s) or test configuration mode(s) mentioned above was evaluated respectively.

Pretest Mode	Description
Mode 1	Wireless charging Mode

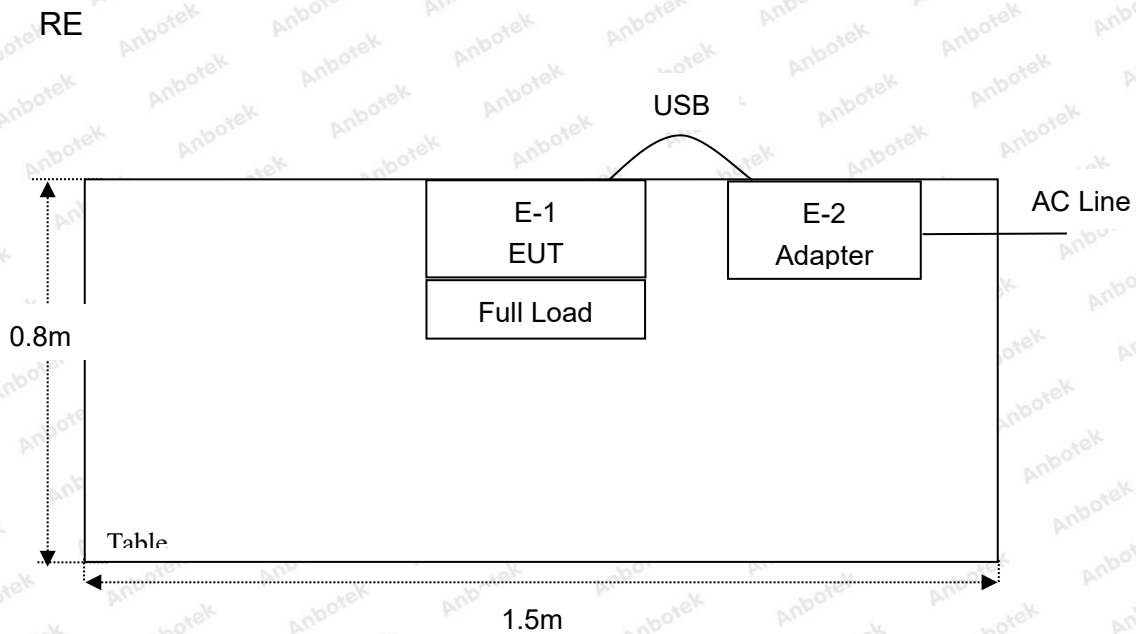
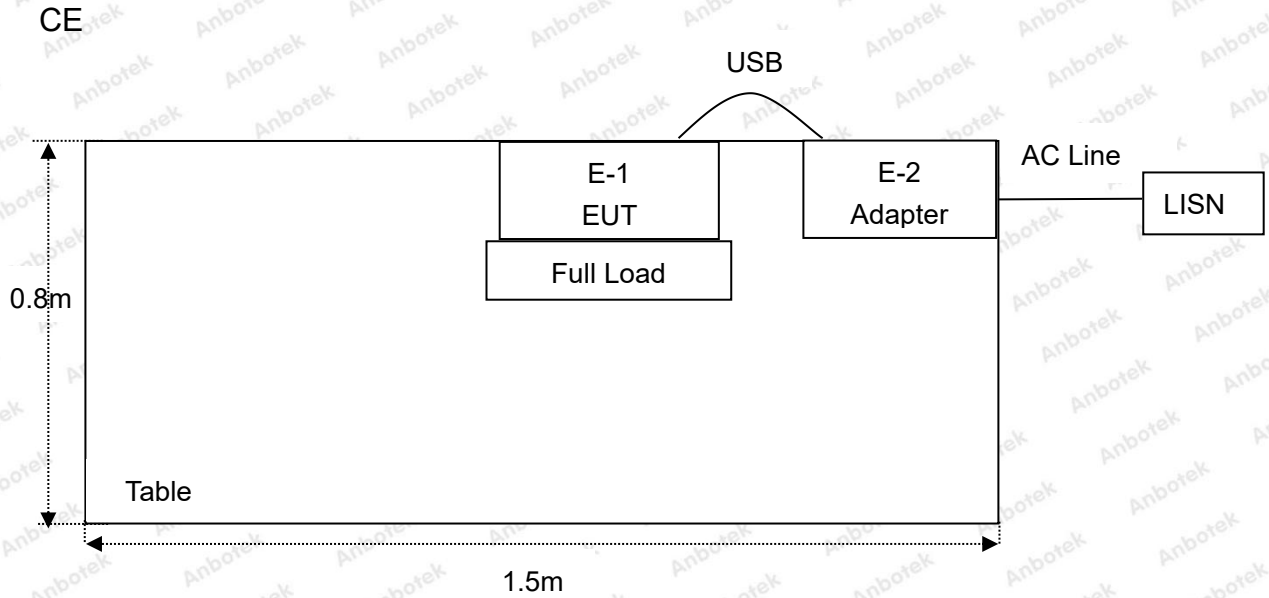
For Conducted Emission	
Final Test Mode	Description
Mode 1	Wireless charging Mode

For Radiated Emission	
Final Test Mode	Description
Mode 1	Wireless charging Mode

Note: (1) Test channel is 0.1285MHz.

(2) All the situation(full load, half load and empty load) has been tested,only the worst situation (full load 10W) was recorded in the report.

1.5. Description Of Test Setup



1.6. Test Equipment List

Item	Equipment	Manufacturer	Model No.	Serial No.	Last Cal.	Cal. Interval
1.	Three Phase V-type Artificial Power Network	CYBERTEK	EM5040DT	E215040DT001	Jul 05, 2021	1 Year
2.	EMI Test Receiver	Rohde & Schwarz	ESCI	100627	Oct. 22, 2021	1 Year
3.	EMI Test Receiver	Rohde & Schwarz	ESR26	101481	Oct. 22, 2021	1 Year
4.	RF Switching Unit	Compliance Direction	RSU-M2	38303	Oct. 22, 2021	1 Year
5.	MAX Spectrum Analysis	Agilent	N9020A	MY51170037	Oct. 22, 2021	1 Year
6.	Preamplifier	SKET Electronic	BK1G18G30 D	KD17503	Oct. 22, 2021	1 Year
7.	Double Ridged Horn Antenna	Instruments corporation	GTH-0118	351600	Oct. 22, 2021	2 Year
8.	Bilog Broadband Antenna	Schwarzbeck	VULB9163	VULB 9163-289	Oct. 22, 2021	2 Year
9.	Loop Antenna	Schwarzbeck	FMZB1519B	00053	Oct. 22, 2021	2 Year
10.	Horn Antenna	A-INFO	LB-180400-K F	J211060628	Oct. 22, 2021	2 Year
11.	Pre-amplifier	SONOMA	310N	186860	Oct. 22, 2021	1 Year
12.	EMI Test Software EZ-EMC	SHURPLE	N/A	N/A	N/A	N/A
13.	RF Test Control System	YIHENG	YH3000	2017430	Oct. 22, 2021	1 Year
14.	Power Sensor	DAER	RPR3006W	15100041SN045	Oct. 22, 2021	1 Year
15.	Power Sensor	DAER	RPR3006W	15100041SN046	Oct. 22, 2021	1 Year
16.	MXA Spectrum Analysis	KEYSIGHT	N9020A	MY53280032	Oct. 22, 2021	1 Year
17.	MXG RF Vector Signal Generator	Agilent	N5182A	MY48180656	Oct. 22, 2021	1 Year
18.	Signal Generator	Agilent	E4421B	MY41000743	Oct. 22, 2021	1 Year
19.	DC Power Supply	IVYTECH	IV3605	1804D360510	Oct. 22, 2021	1 Year
20.	Constant Temperature Humidity Chamber	ZHONGJIAN	ZJ-KHWS80 B	N/A	Oct. 22, 2021	1 Year

1.7. Measurement Uncertainty

Radiation Uncertainty	:	Ur = 3.9 dB (Horizontal)
	:	Ur = 3.8 dB (Vertical)
Conduction Uncertainty	:	Uc = 3.4 dB

1.8. Description of Test Facility

The test facility is recognized, certified, or accredited by the following organizations:

FCC-Registration No.: 184111

Shenzhen Anbotek Compliance Laboratory Limited, EMC Laboratory has been registered and fully described in a report filed with the (FCC) Federal Communications Commission. The acceptance letter from the FCC is maintained in our files. Registration No. 184111.

ISED-Registration No.: 8058A

Shenzhen Anbotek Compliance Laboratory Limited, EMC Laboratory has been registered and fully described in a report filed with the (ISED) Innovation, Science and Economic Development Canada. The acceptance letter from the ISED is maintained in our files. Registration 8058A.

Test Location

Shenzhen Anbotek Compliance Laboratory Limited.

1/F, Building D, Sogood Science and Technology Park, Sanwei community, Hangcheng Street, Bao'an District, Shenzhen, Guangdong, China.518128

2. Summary of Test Results

Standard Section	Test Item	Result
FCC Part 15, Paragraph 15.207	Conducted Emission Test	PASS
FCC Part 15, Paragraph 15.209(a)(f)	Spurious Emission	PASS
Part 15.203	Antenna Requirement	PASS

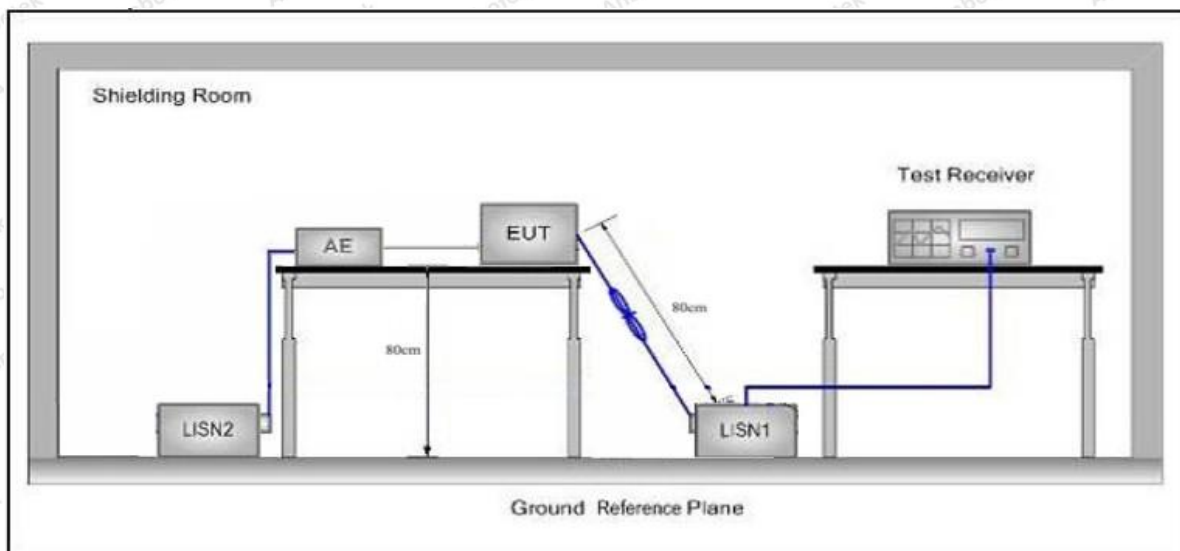
3. Conducted Emission Test

3.1. Test Standard and Limit

Test Standard	FCC Part15 Section 15.207		
Test Limit	Frequency	Maximum RF Line Voltage (dBuV)	
		Quasi-peak Level	Average Level
	150kHz~500kHz	66 ~ 56 *	56 ~ 46 *
	500kHz~5MHz	56	46
5MHz~30MHz	60	50	

Remark: (1) *Decreasing linearly with logarithm of the frequency.
 (2) The lower limit shall apply at the transition frequency.

3.2. Test Setup



3.3. Test Procedure

The EUT system is connected to the power mains through a line impedance stabilization network (L.I.S.N.). This provides a 50ohm coupling impedance for the EUT system. Please refer the block diagram of the test setup and photographs. Both sides of AC line are checked to find out the maximum conducted emission. In order to find the maximum emission levels, the relative positions of equipment and all of the interface cables shall be changed according to FCC ANSI C63.10-2020 on Conducted Emission Measurement.

The bandwidth of test receiver (ESCI) set at 9kHz.

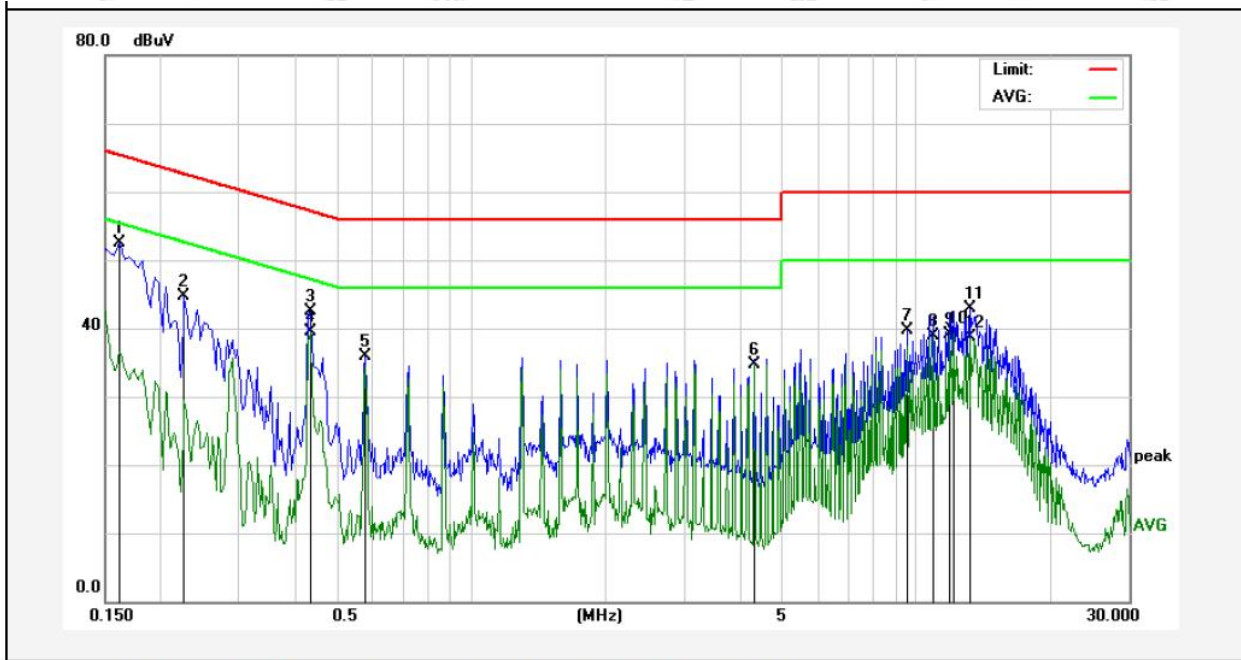
The frequency range from 150kHz to 30MHz is checked.

3.4. Test Data

Please to see the following pages

Conducted Emission Test Data

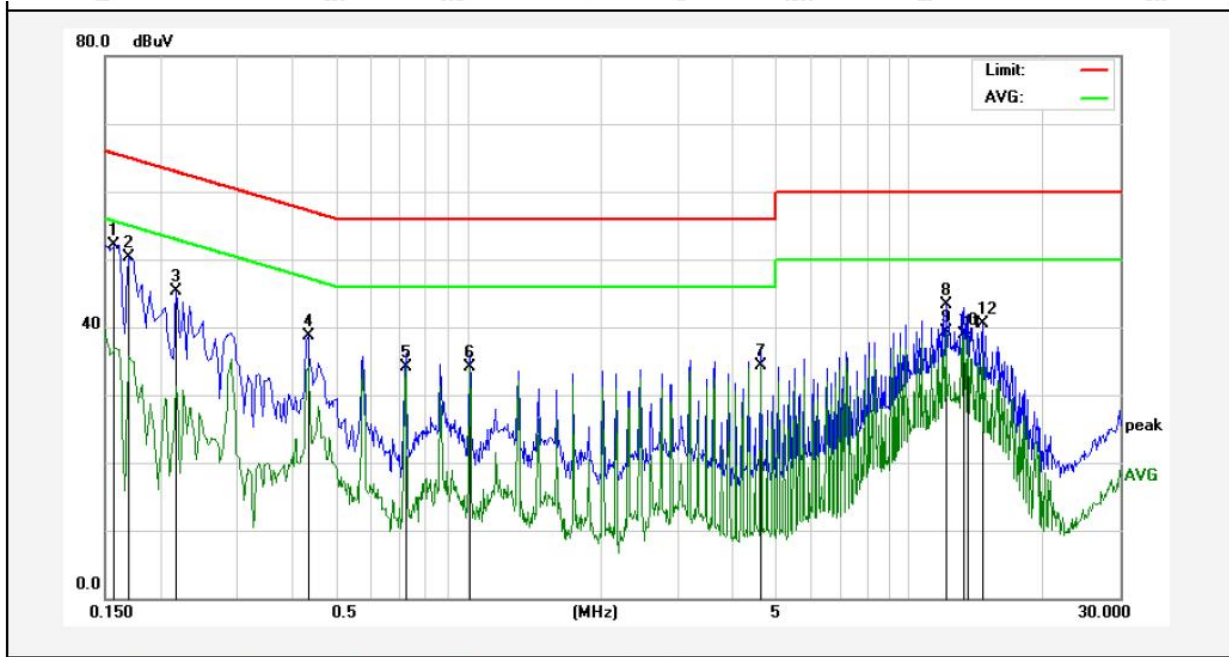
Test Site: 1# Shielded Room
 Operating Condition: Mode 1
 Test Specification: AC 120V, 60Hz for adapter
 Comment: Live Line
 Tem.: 23.3°C Hum.: 49%



No.	Freq. (MHz)	Reading (dBUV)	Factor (dB)	Result (dBUV)	Limit (dBUV)	Over Limit (dB)	Detector	Remark
1	0.1620	42.88	9.70	52.58	65.36	-12.78	QP	
2	0.2260	34.91	9.71	44.62	62.59	-17.97	QP	
3	0.4340	32.76	9.72	42.48	57.18	-14.70	QP	
4	0.4340	29.70	9.72	39.42	47.18	-7.76	AVG	
5	0.5780	26.08	9.76	35.84	56.00	-20.16	QP	
6	4.3260	24.97	9.73	34.70	46.00	-11.30	AVG	
7	9.5180	29.97	9.83	39.80	60.00	-20.20	QP	
8	10.9540	29.07	9.86	38.93	50.00	-11.07	AVG	
9	11.8260	29.13	9.89	39.02	50.00	-10.98	AVG	
10	12.1140	29.33	9.90	39.23	50.00	-10.77	AVG	
11	13.2620	32.99	9.93	42.92	60.00	-17.08	QP	
12	13.2620	28.74	9.93	38.67	50.00	-11.33	AVG	

Conducted Emission Test Data

Test Site: 1# Shielded Room
 Operating Condition: Mode 1
 Test Specification: AC 120V, 60Hz for adapter
 Comment: Neutral Line
 Tem.: 23.3°C Hum.: 49%



No.	Freq. (MHz)	Reading (dBuV)	Factor (dB)	Result (dBuV)	Limit (dBuV)	Over Limit (dB)	Detector	Remark
1	0.1580	42.44	9.70	52.14	65.56	-13.42	QP	
2	0.1700	40.64	9.71	50.35	64.96	-14.61	QP	
3	0.2180	35.50	9.71	45.21	62.89	-17.68	QP	
4	0.4340	28.89	9.72	38.61	57.18	-18.57	QP	
5	0.7220	24.26	9.75	34.01	46.00	-11.99	AVG	
6	1.0100	24.31	9.74	34.05	46.00	-11.95	AVG	
7	4.6140	24.52	9.74	34.26	46.00	-11.74	AVG	
8	12.1140	33.35	9.90	43.25	60.00	-16.75	QP	
9	12.1140	29.37	9.90	39.27	50.00	-10.73	AVG	
10	13.2700	29.00	9.93	38.93	50.00	-11.07	AVG	
11	13.5580	28.48	9.95	38.43	50.00	-11.57	AVG	
12	14.7100	30.54	9.98	40.52	60.00	-19.48	QP	

4. Radiation Spurious Emission and Band Edge

4.1. Test Standard and Limit

Test Standard	FCC Part15 C Section 15.209 and 15.205				
Test Limit	Frequency (MHz)	Field strength (microvolt/meter)	Limit (dBuV/m)	Remark	Measurement distance (m)
	0.009MHz~0.490MHz	2400/F(kHz)	-	-	300
	0.490MHz-1.705MHz	24000/F(kHz)	-	-	30
	1.705MHz-30MHz	30	-	-	30
	30MHz~88MHz	100	40.0	Quasi-peak	3
	88MHz~216MHz	150	43.5	Quasi-peak	3
	216MHz~960MHz	200	46.0	Quasi-peak	3
	960MHz~1000MHz	500	54.0	Quasi-peak	3
	Above 1000MHz	500	54.0	Average	3
-		74.0	Peak	3	

Remark:

- (1) The lower limit shall apply at the transition frequency.
- (2) 15.35(b), Unless otherwise specified, the limit on peak radio frequency emissions is 20dB above the maximum permitted average emission limit applicable to the equipment under test. This peak limit applies to the total peak emission level radiated by the device.

4.2. Test Setup

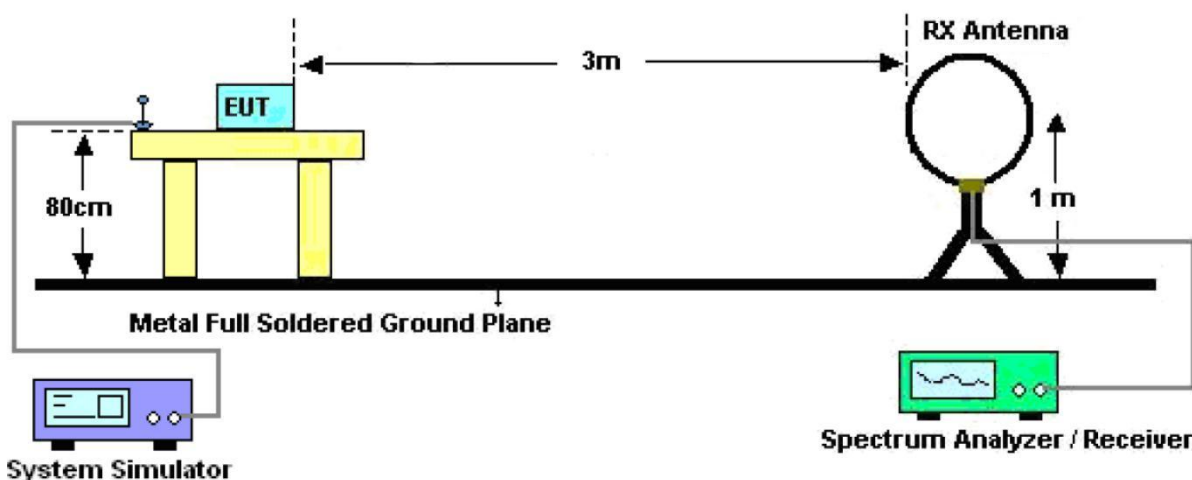


Figure 1. Below 30MHz

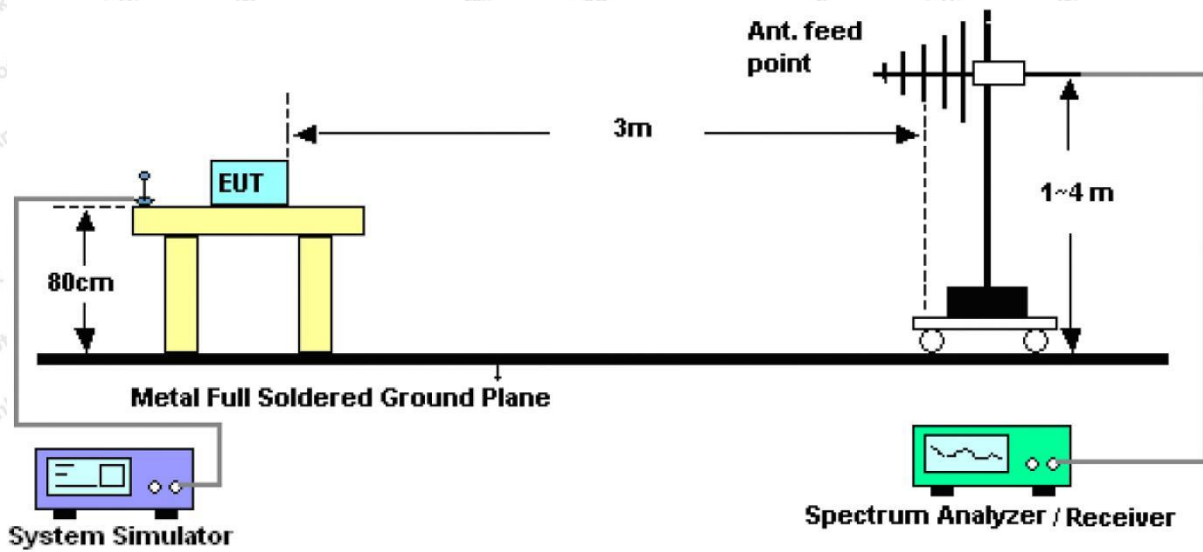


Figure 2. 30MHz to 1GHz

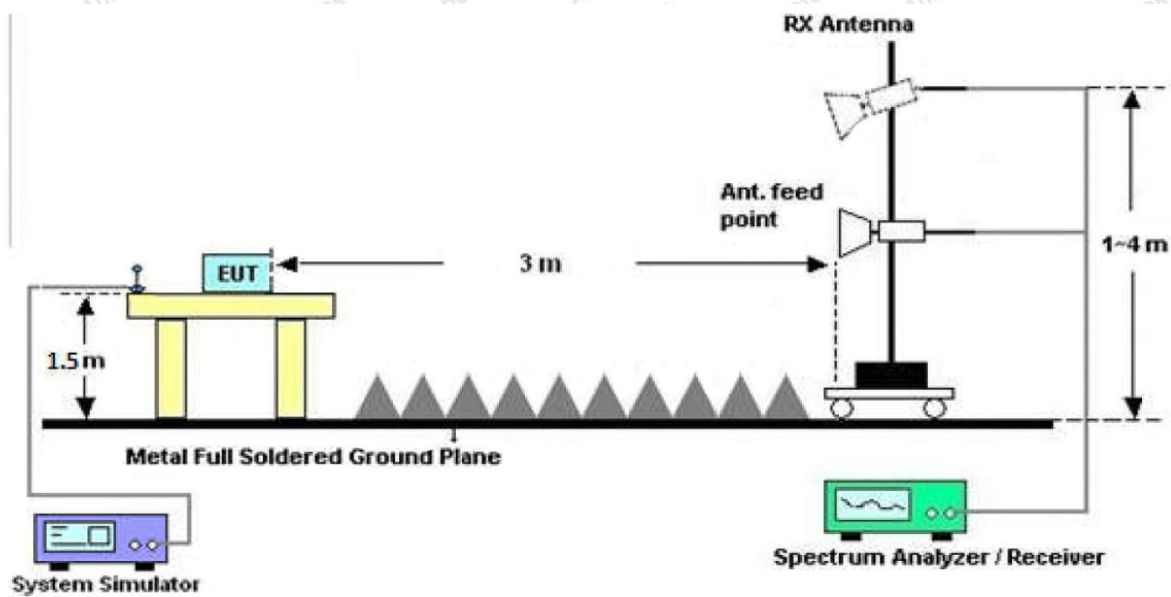


Figure 3. Above 1 GHz

4.3. Test Procedure

For below 1GHz: The EUT is placed on a turntable, which is 0.8m above the ground plane.

For above 1GHz: The EUT is placed on a turntable, which is 1.5m above the ground plane.

The turn table can rotate 360 degrees to determine the position of the maximum emission level. The EUT is set 3 meters away from the receiving antenna which is mounted on an antenna tower. The antenna can be moved up and down from 1 to 4 meters to find out the maximum emission level. Rotated the EUT through three orthogonal axes to determine the maximum emissions, both horizontal and vertical polarization of the antenna are set on test. The EUT is tested in 9*6*6 Chamber. The device is evaluated in xyz orientation.

Report No.: 18220WC10271001

FCC ID: WWE-2MNQI0728

Page 15 of 29

For 9kHz to 150kHz, Set the spectrum analyzer as:

RBW = 200Hz, VBW = 1kHz, Detector= Quasi-Peak, Trace mode= Max hold, Sweep- auto couple.

For 150kHz to 30MHz, Set the spectrum analyzer as:

RBW = 9kHz, VBW = 30kHz, Detector= Quasi-Peak, Trace mode= Max hold, Sweep- auto couple.

For 30MHz to 1000MHz, Set the spectrum analyzer as:

RBW = 100kHz, VBW = 300kHz, Detector= Quasi-Peak, Trace mode= Max hold, Sweep- auto couple.

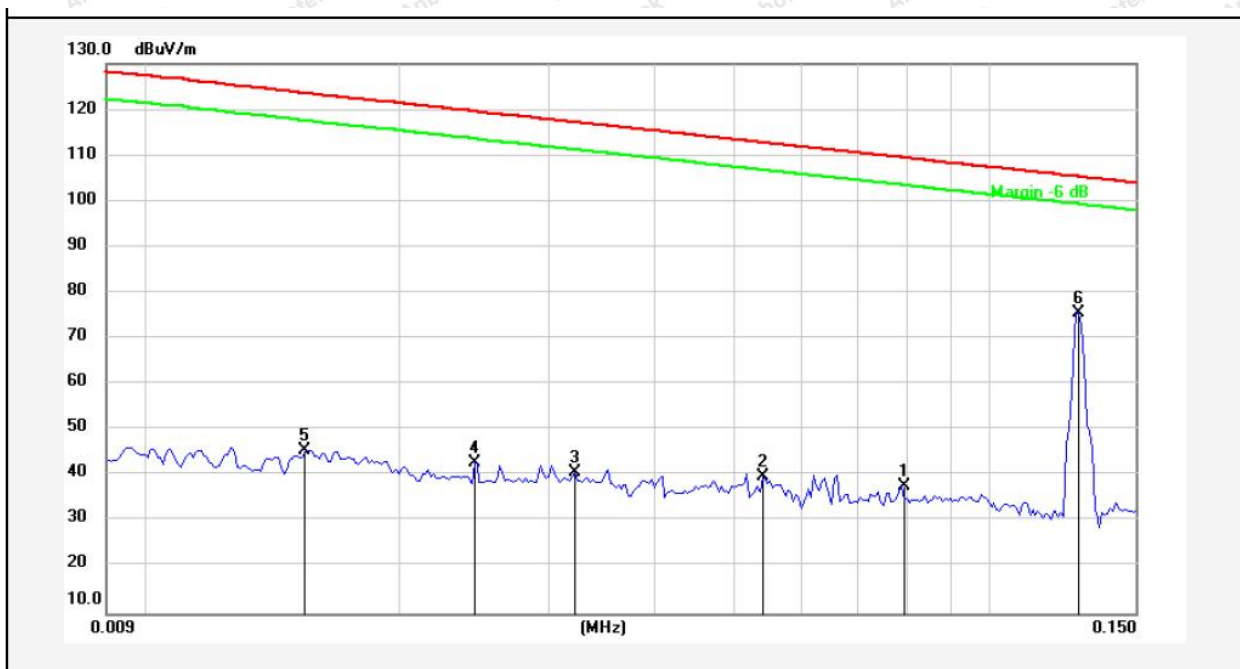
4.4. Test Data

PASS

Note: The data is in TX mode, and this is the worst mode.

Test Results (9K~15MHz)

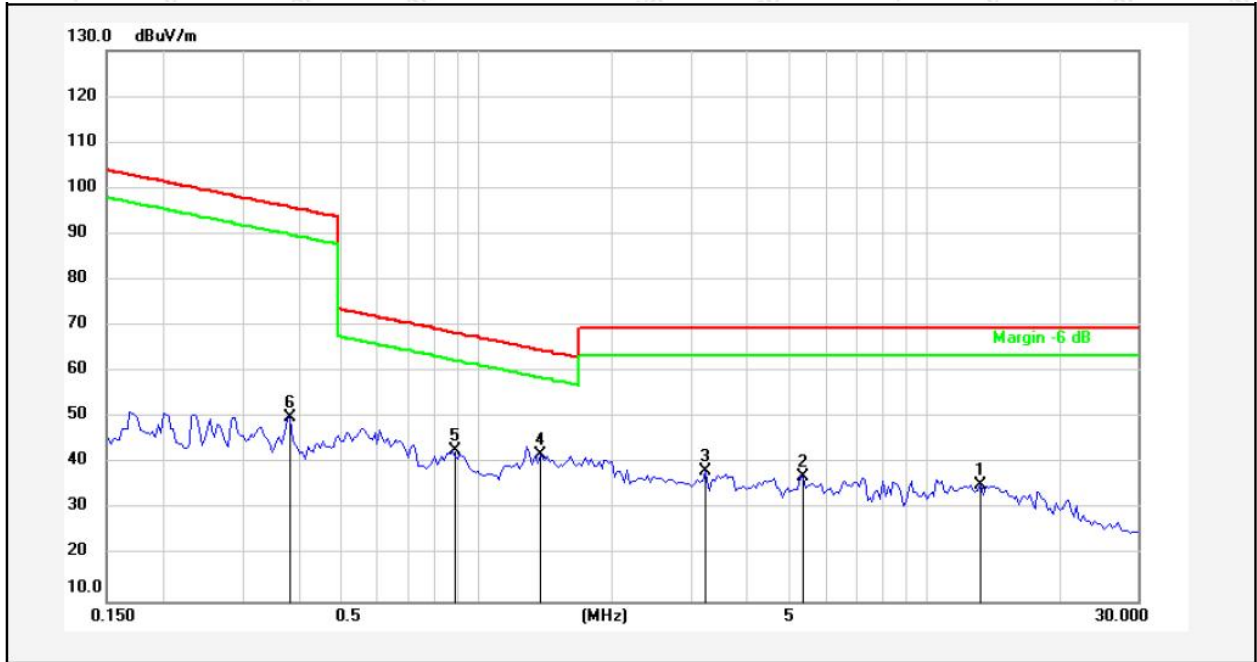
Test Mode: Mode 1
 Power Source: AC 120V, 60Hz for adapter
 Temp.(°C)/Hum.(%RH): 22.1°C/50%RH
 Distance: 3m



No.	Freq. (MHz)	Reading (dBuV)	Factor ()	Result (dBuV/m)	Limit (dBuV/m)	Over Limit (dB)	Detector	Height (cm)	degree (deg)	Remark
1	0.0791	17.50	20.36	37.86	109.54	-71.68	AV			
2	0.0541	19.34	20.36	39.70	112.82	-73.12	AV			
3	0.0323	20.24	20.56	40.80	117.27	-76.47	AV			
4	0.0246	22.38	20.38	42.76	119.63	-76.87	AV			
5	0.0154	25.15	20.29	45.44	123.67	-78.23	AV			
6	0.1285	55.21	20.34	75.55	105.35	-29.80	AV			

Test Results (15~30MHz)

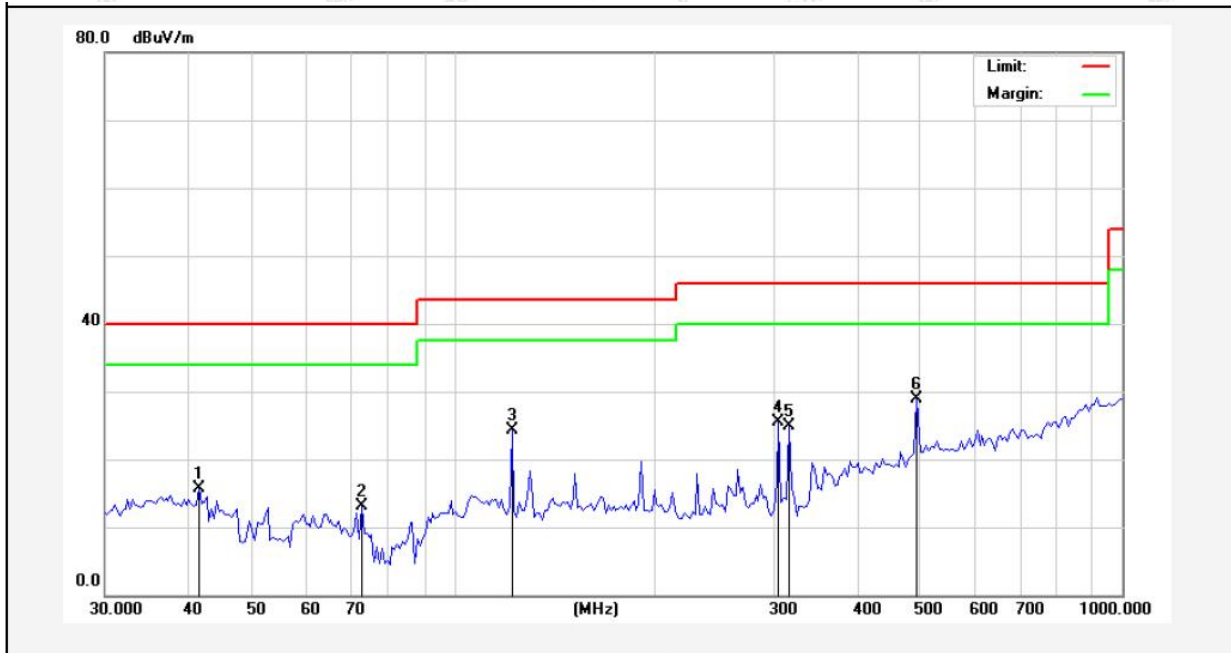
Test Mode: Mode 1
 Power Source: AC 120V, 60Hz for adapter
 Temp.(°C)/Hum.(%RH): 22.1°C/50%RH
 Distance: 3m



No.	Freq. (MHz)	Reading (dBuV)	Factor ()	Result (dBuV/m)	Limit (dBuV/m)	Over Limit (dB)	Detector	Height (cm)	degree (deg)	Remark
1	13.3725	14.77	20.54	35.31	69.50	-34.19	QP			
2	5.3615	16.64	20.39	37.03	69.50	-32.47	QP			
3	3.2410	18.05	20.33	38.38	69.50	-31.12	QP			
4	1.3884	21.68	20.27	41.95	64.78	-22.83	QP			
5	0.8850	22.59	20.26	42.85	68.68	-25.83	QP			
6	0.3840	29.63	20.28	49.91	95.90	-45.99	AV			

Test Results (30~1000MHz)

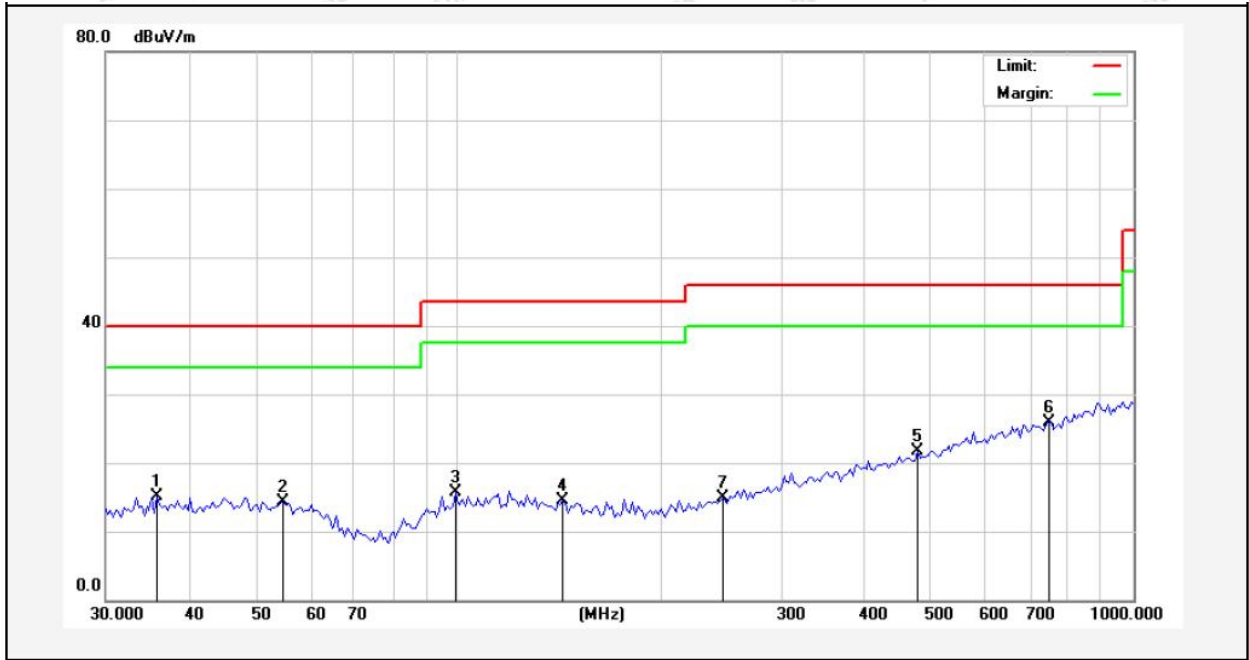
Test Mode: Mode 1
 Power Source: AC 120V, 60Hz for adapter
 Polarization: Vertical
 Temp.(°C)/Hum.(%RH): 22.3°C/46%RH
 Distance: 3m



No.	Freq. (MHz)	Reading (dBuV)	Factor (dB/m)	Result (dBuV/m)	Limit (dBuV/m)	Over Limit (dB)	Detector	Height (cm)	degree (deg)	Remark
1	41.4941	32.63	-16.89	15.74	40.00	-24.26	QP			
2	72.7189	34.70	-21.66	13.04	40.00	-26.96	QP			
3	121.9753	44.02	-19.81	24.21	43.50	-19.29	QP			
4	306.2164	40.17	-14.70	25.47	46.00	-20.53	QP			
5	317.1444	39.27	-14.43	24.84	46.00	-21.16	QP			
6	491.6059	39.58	-10.72	28.86	46.00	-17.14	QP			

Test Results (30~1000MHz)

Test Mode: Mode 1
 Power Source: AC 120V, 60Hz for adapter
 Polarization: Horizontal
 Temp.(°C)/Hum.(%RH): 22.3°C/46%RH
 Distance: 3m



No.	Freq. (MHz)	Reading (dBuV)	Factor (dB/m)	Result (dBuV/m)	Limit (dBuV/m)	Over Limit (dB)	Detector	Height (cm)	degree (deg)	Remark
1	35.7490	32.94	-17.87	15.07	40.00	-24.93	QP			
2	54.9309	31.77	-17.44	14.33	40.00	-25.67	QP			
3	98.8324	32.72	-17.11	15.61	43.50	-27.89	QP			
4	142.8242	35.76	-21.29	14.47	43.50	-29.03	QP			
5	478.8455	32.61	-10.95	21.66	46.00	-24.34	QP			
6	748.7943	32.49	-6.67	25.82	46.00	-20.18	QP			
7	245.9507	31.18	-16.24	14.94	46.00	-31.06	QP			

5. Antenna Requirement

5.1. Test Standard and Requirement

Test Standard	FCC Part15 Section 15.203
Requirement	An intentional radiator shall be designed to ensure that no antenna other than that furnished by the responsible party shall be used with the device. The use of a permanently attached antenna or of an antenna that uses a unique coupling to the intentional radiator, the manufacturer may design the unit so that a broken antenna can

5.2. Antenna Connected Construction

The antenna is a Inductive loop coil Antenna which permanently attached, and the best case gain of the antenna is 0 dBi. It complies with the standard requirement.

APPENDIX I -- TEST SETUP PHOTOGRAPH

Photo of Conducted Emission Measurement

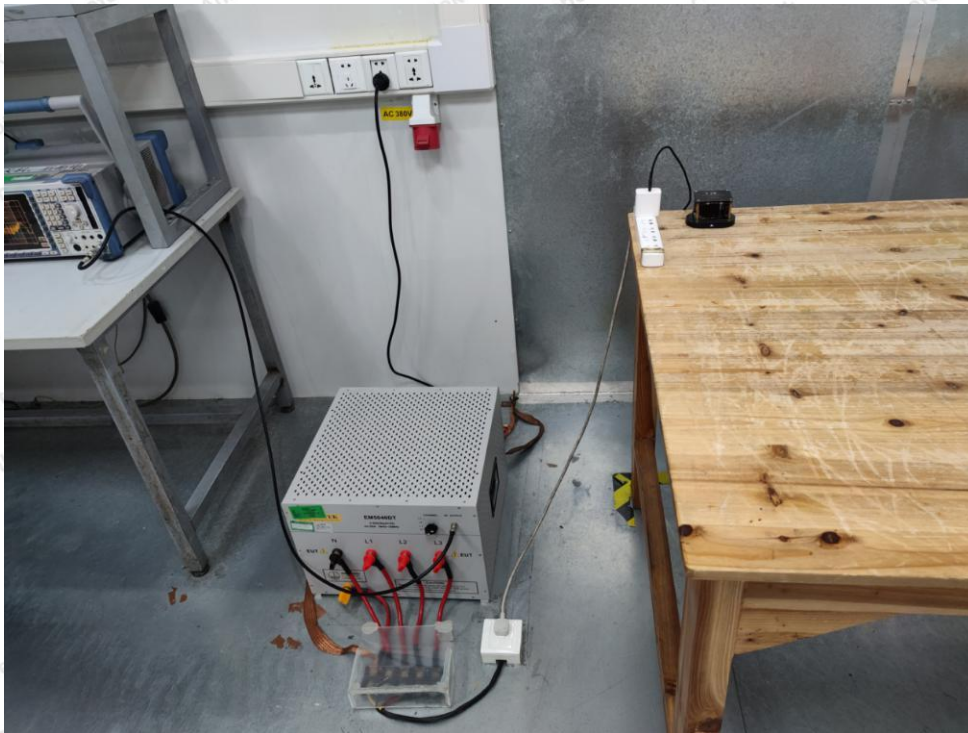


Photo of Radiation Emission Test





APPENDIX II -- EXTERNAL PHOTOGRAPH

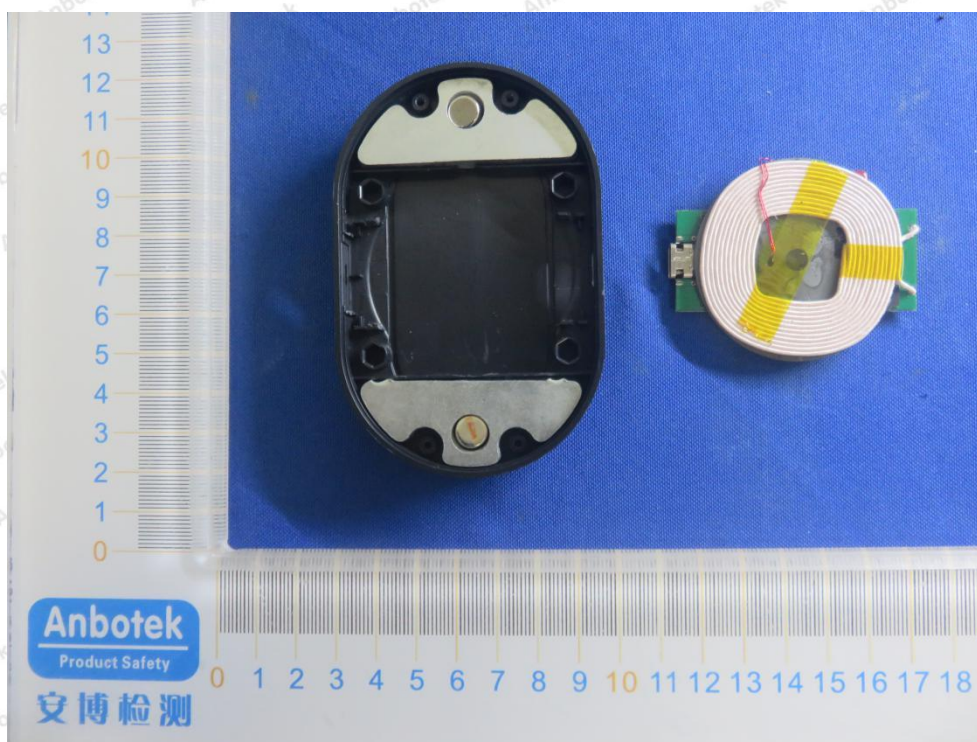
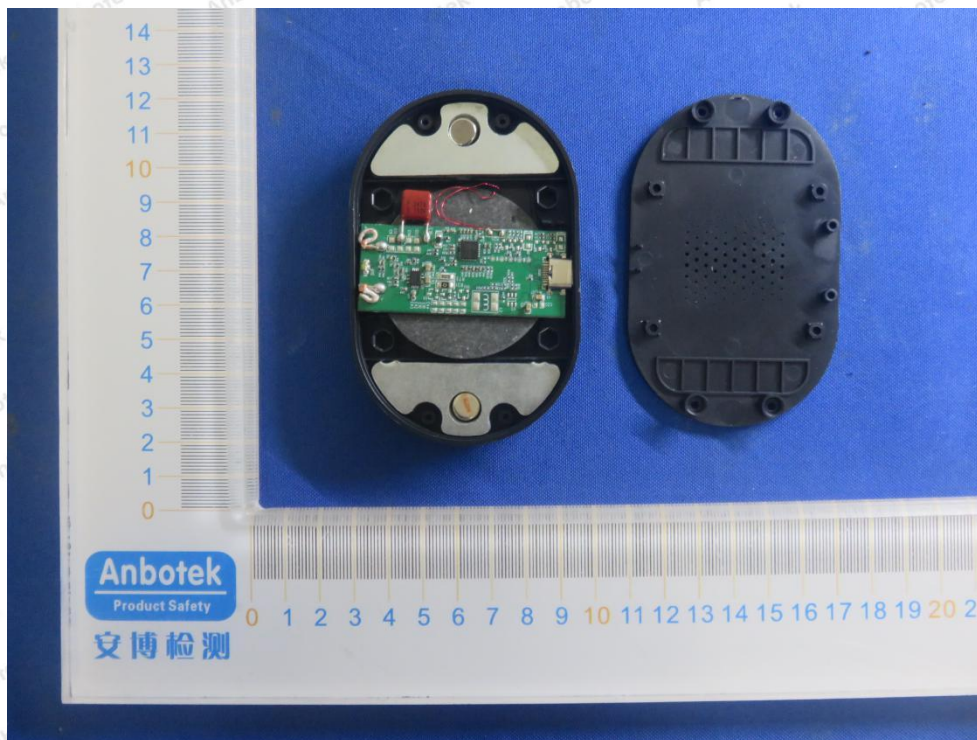




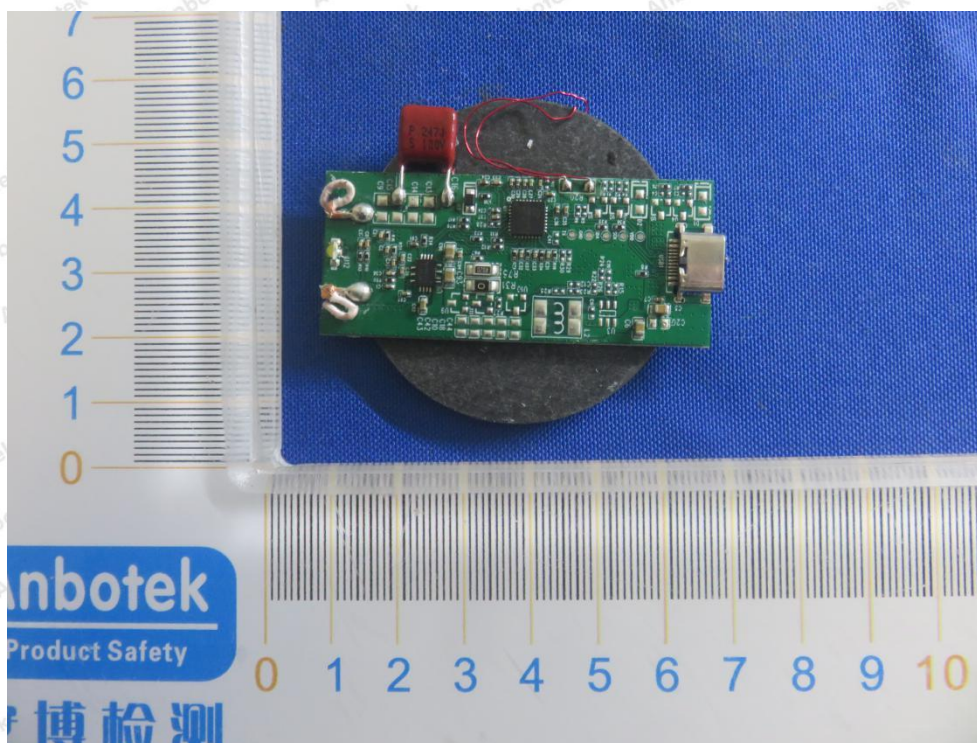
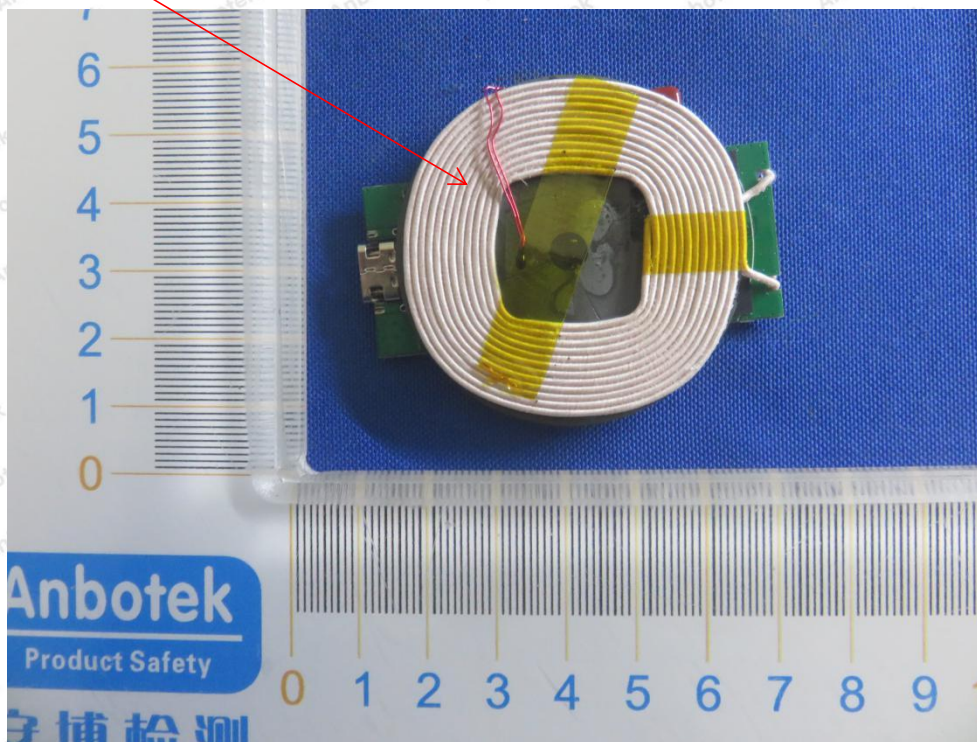


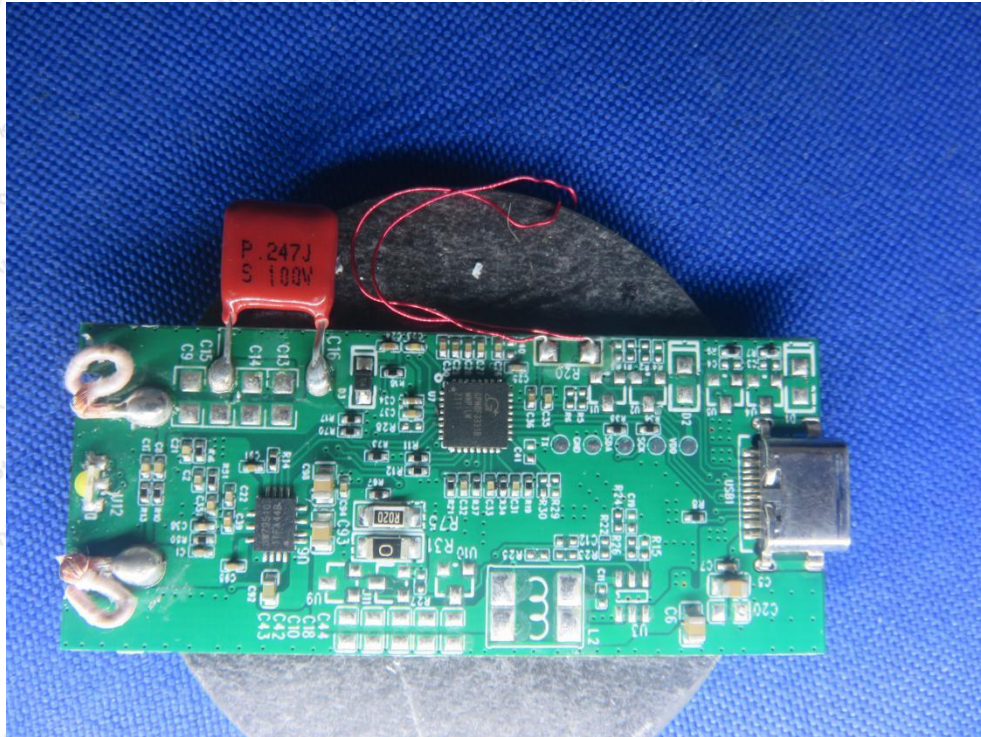


APPENDIX III -- INTERNAL PHOTOGRAPH



ANT





----- End of Report -----