

Front

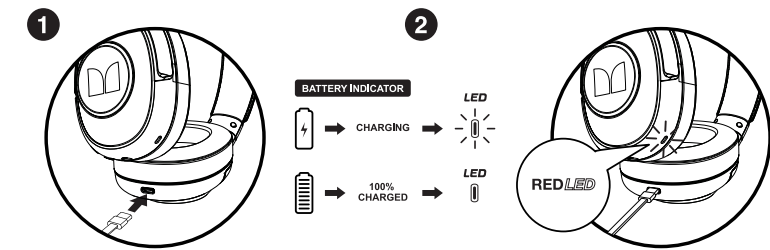
MONSTER® CLARITY™ 500 LOW LATENCY WIRELESS HEADPHONES AURICULARES INALÁMBRICOS DE BAJA LATENCIA



Model: 2MNHP2174BOA4

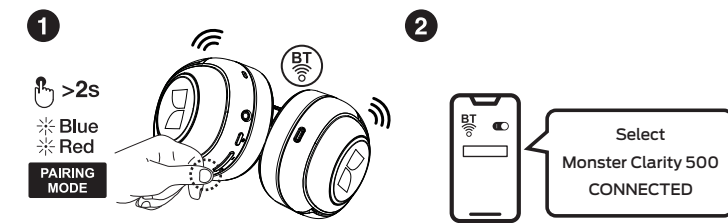
CHARGING

The red light is on when charging, and off after completed.



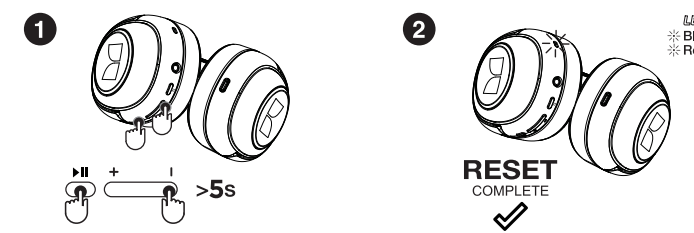
PAIRING TO YOUR DEVICE

Press and hold Play button. LED will flash Blue and Red to indicate it is ready to pair.



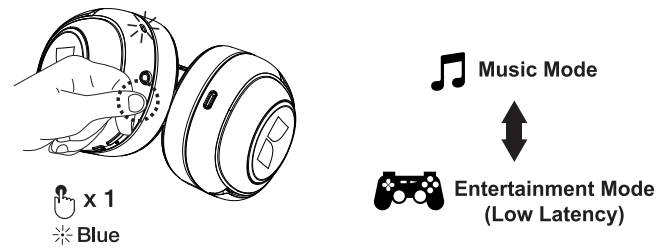
RESET

Hold play and Volume down for 5s until LED flashes Blue and red.



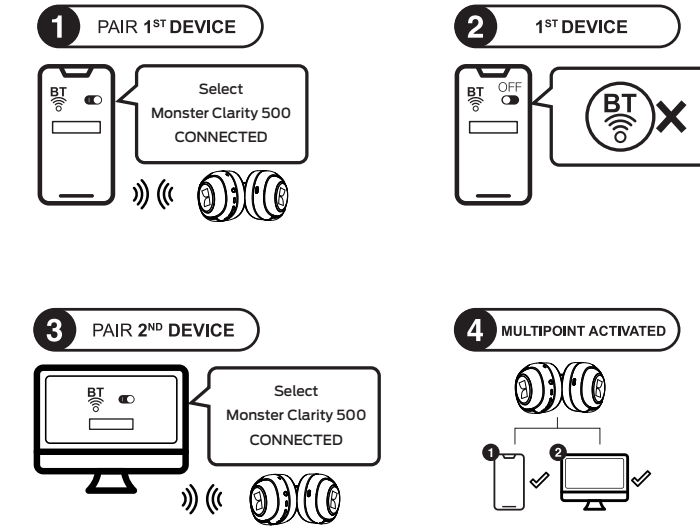
LOW LATENCY MODE

Press Gaming mode Button to switch between Music and Low latency modes.



MULTI-DEVICE CONNECTION

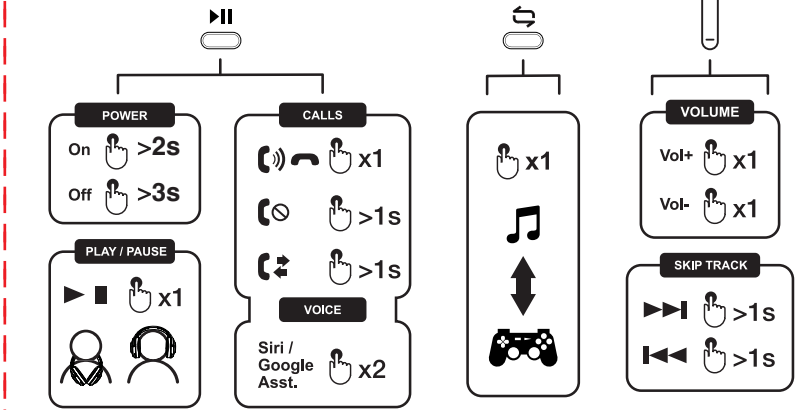
Connect to your first device. Turn BT "Off" on your first device. Connect to your second device. Turn BT "On" on your first device.



MUSIC AND CALL CONTROLS

Power On: Hold for 2s
Power Off: Hold for 3s
Play/pause: Press Once
Answer Calls: Press Once
End Calls: Press Once
Reject Call: Hold for 1s
Switch Calls: (between mobile and headphone): Hold for 1s

Assistant: Press 2 Times
Gaming Mode: Press Once
Volume Up: Press + Once
Volume Down: Press - Once
Skip Track: Hold + for 1s
Previous track: Hold - for 1s



Back

FCC Statement

This equipment has been tested and found to comply with the limits for a Class B digital device, pursuant to Part 15 of the FCC Rules. These limits are designed to provide reasonable protection against harmful interference in a residential installation. This equipment generates uses and can radiate radio frequency energy and, if not installed and used in accordance with the instructions, may cause harmful interference to radio communications. However, there is no guarantee that interference will not occur in a particular installation. If this equipment does cause harmful interference to radio or television reception, which can be determined by turning the equipment off and on, the user is encouraged to try to correct the interference by one or more of the following measures:

- Reorient or relocate the receiving antenna.
- Increase the separation between the equipment and receiver.
- Connect the equipment into an outlet on a circuit different from that to which the receiver is connected.
- Consult the dealer or an experienced radio/TV technician for help. This device complies with part 15 of the FCC Rules.

Operation is subject to the following two conditions:

- (1) This device may not cause harmful interference, and
- (2) this device must accept any interference received, including interference that may cause undesired operation. Changes or modifications not expressly approved by the party responsible for compliance could void the user's authority to operate the equipment.

The device has been evaluated to meet general RF exposure requirement. The device can be used in portable exposure condition without restriction

Warranty

What is covered under the 1 Year Warranty?

Monster® warrants that this product will be free from defects in workmanship and materials under normal use (Limited Warranty™). In a case where the product is determined to be "defective", we will repair the product free of charge. If we cannot repair the product, we will replace it for you free of charge.

How long am I covered?

You are covered for the 1 Years from Purchase

What is not covered under the Limited Warranty?

1. Normal wear and tear of product use.
2. Misuse, lack of care, mishandling, accidental damage, abuse or other abnormal use.
3. Use of the product other than for its intended purpose.
4. Damage caused by improper or unauthorized repair or maintenance.
5. Product that has been modified or altered.
6. Any product that is not manufactured by Monster® (including, without limitation, any non-Monster® product that is used in connection with the product).

WARNING

DO NOT use alcohol, paint thinners, detergent, shampoo, or other solvents for cleaning purposes.
 DO NOT intentionally immerse the earphones under water.
 DO NOT wash the earphones in washing machine.
 DO NOT expose the product to extremely high or low temperatures.
 DO NOT leave the product near candles, cooking burners and open flames.
 DO NOT disassemble the product in any way to avoid electric shock.
 Only charge the battery in accordance to the instructions provided by the company.
 DO NOT wash the charging box.

CAUTION

RISK OF EXPLOSION INCREASES IF BATTERY IS REPLACED BY AN INCORRECT TYPE. DISPOSE USED BATTERIES ACCORDING TO THE INSTRUCTIONS.

INSTRUCTIONS

DO NOT DISCARD THE USED BATTERIES ALONG WITH HOUSEHOLD WASTE. DISPOSAL OF BATTERY SHOULD COMPLY WITH LOCAL ENVIRONMENTAL REGULATIONS.

BT Version: V5.2

Profile: A2DP, AVRCP, HFP, HID, AVCTP, AVDTP, SPP

Codec: SBC, AAC

Range: 10 meters (33 feet)

Charging time (Full charge): Approx. 1 hours

Playtime: Up to 30 hours

(varies by volume and content)

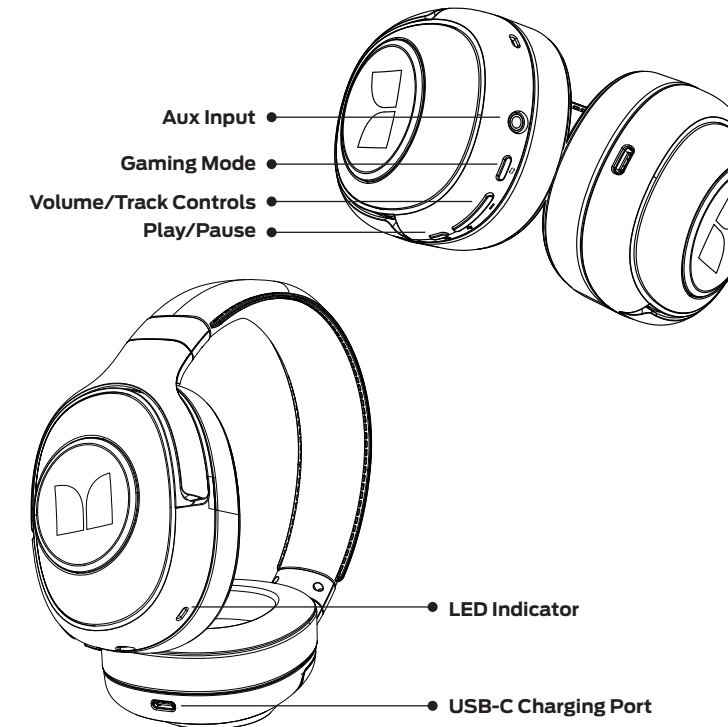
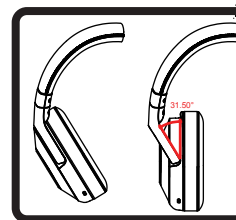
Standby time: Up to 260 hours

Dimensions: 166W x 79H x 189L (mm)

Weight: 258g

WARNING

Do not rotate ear cups beyond 30° degrees



FCC Warning

This device complies with part 15 of the FCC Rules. Operation is subject to the following two conditions:
 (1) This device may not cause harmful interference, and (2) this device must accept any interference received, including interference that may cause undesired operation.

Any Changes or modifications not expressly approved by the party responsible for compliance could void the user's authority to operate the equipment.

Note: This equipment has been tested and found to comply with the limits for a Class B digital device, pursuant to part 15 of the FCC Rules. These limits are designed to provide reasonable protection against harmful interference in a residential installation. This equipment generates uses and can radiate radio frequency energy and, if not installed and used in accordance with the instructions, may cause harmful interference to radio communications. However, there is no guarantee that interference will not occur in a particular installation. If this equipment does cause harmful interference to radio or television reception, which can be determined by turning the equipment off and on, the user is encouraged to try to correct the interference by one or more of the following measures:

- Reorient or relocate the receiving antenna.
 - Increase the separation between the equipment and receiver.
 - Connect the equipment into an outlet on a circuit different from that to which the receiver is connected.
 - Consult the dealer or an experienced radio/TV technician for help.
- The device has been evaluated to meet general RF exposure requirement. The device can be used in portable exposure condition without restriction.

website: monsterstore.com
 support: support@monsterforever.com

1 Year Limited Warranty

Package Contents: (1) Wireless Headphones, (1) USB-C™ Charging Cable, (1)3.5mm audio cable, (1) User Manual.



Manufactured and distributed by Lifeworks technology Group LLC, under license. New York, NY 10018. ©2023. The M Monster logo and the M slice logo are trademarks or registered trademarks of Monster Inc. and its subsidiaries in the U.S. and other countries and are used under license. The Bluetooth word mark and logos are registered trademarks owned by Bluetooth SIG, Inc. - USB-C is a registered trademark of USB Implementers Forum. Other trademarks and trade names are those of their respective owners. MADE IN CHINA.

WARNING: This product can expose you to chemicals including Lead and Lead Compounds, which are known to the State of California to cause cancer and birth defects or other reproductive harm. For more information, go to www.P65Warnings.ca.gov. **ADVERTENCIA:** Este producto puede exponerle a químicos incluyendo Lead and Lead Compounds, que es (son) conocido (s) por el Estado de California como causante (s) de cáncer y defectos de nacimiento u otros daños reproductivos. Para mayor información, visite www.P65Warnings.ca.gov.