



# OET 65

# TEST REPORT

<b>Product Name</b>	TWO-WAY RADIO
<b>Model</b>	KG-833, KG-639E, GU-16, KG-659E, KG-703E, KG-669E, KG-679E, KG-689E, KG-699E, KG-801E, KG-805
<b>FCC ID</b>	WVTWOUXUN08
<b>Client</b>	Quanzhou Wouxun Electronics Co., Ltd.


**TA Technology (Shanghai) Co., Ltd.**

**TA Technology (Shanghai) Co., Ltd.**  
**Test Report**

Report No. RXA1206-0413SAR

Page 2 of 69

**GENERAL SUMMARY**

<b>Product Name</b>	TWO-WAY RADIO	<b>Model</b>	KG-833, KG-639E, GU-16, KG-659E, KG-703E, KG-669E, KG-679E, KG-689E, KG-699E, KG-801E, KG-805
<b>FCC ID</b>	WVTWOUXUN08	<b>Report No.</b>	RXA1206-0413SAR
<b>Client</b>	Quanzhou Wouxun Electronics Co., Ltd.		
<b>Manufacturer</b>	Quanzhou Wouxun Electronics Co., Ltd.		
<b>Reference Standard(s)</b>	<p><b>IEEE Std C95.1, 1999:</b> IEEE Standard for Safety Levels with Respect to Human Exposure to Radio Frequency Electromagnetic Fields, 3 KHz to 300 GHz.</p> <p><b>IEEE Std 1528™-2003:</b> IEEE Recommended Practice for Determining the Peak Spatial-Average Specific Absorption Rate (SAR) in the Human Head from Wireless Communications Devices: Measurement Techniques.</p> <p><b>SUPPLEMENT C Edition 01-01 to OET BULLETIN 65 Edition 97-01 June 2001 including DA 02-1438 June 19, 2002:</b> Evaluating Compliance with FCC Guidelines for Human Exposure to Radiofrequency Electromagnetic Fields Additional Information for Evaluation Compliance of Mobile and Portable Devices with FCC Limits for Human Exposure to Radiofrequency Emissions.</p> <p><b>KDB 643646 D01 SAR Test for PTT Radios v01:</b> SAR Test Reduction Considerations for Occupational PTT Radios</p> <p><b>KDB 447498 D01 Mobile Portable RF Exposure v04:</b> Mobile and Portable Device RF Exposure Procedures and Equipment Authorization Policies</p>		
<b>Conclusion</b>	<p>This portable wireless equipment has been measured in all cases requested by the relevant standards. Test results in Chapter 7 of this test report are below limits specified in the relevant standards.</p> <p>General Judgment: <b>Pass</b></p> <div style="text-align: right;">  <p>(Stamp) Date of issue: June 26<sup>th</sup>, 2012</p> </div>		
<b>Comment</b>	The test result only responds to the measured sample.		

Approved by 杨伟中  
Director

Revised by 凌敏宝  
SAR Manager

Performed by 李冉冉  
SAR Engineer

## TABLE OF CONTENT

1. General Information .....	5
1.1. Notes of the Test Report.....	5
1.2. Testing Laboratory .....	5
1.3. Applicant Information .....	6
1.4. Manufacturer Information.....	6
1.5. Information of EUT.....	7
1.6. The Maximum SAR <sub>1g</sub> Values .....	8
1.7. Test Date .....	8
2. SAR Measurements System Configuration.....	9
2.1. SAR Measurement Set-up.....	9
2.2. DASY5 E-field Probe System .....	10
2.2.1. EX3DV4 Probe Specification .....	10
2.2.2. E-field Probe Calibration .....	11
2.3. Other Test Equipment .....	11
2.3.1. Device Holder for Transmitters .....	11
2.3.2. Phantom .....	12
2.4. Scanning Procedure .....	12
2.5. Data Storage and Evaluation .....	14
2.5.1. Data Storage.....	14
2.5.2. Data Evaluation by SEMCAD .....	14
3. Laboratory Environment.....	16
4. Tissue-equivalent Liquid .....	17
4.1. Tissue-equivalent Liquid Ingredients.....	17
4.2. Tissue-equivalent Liquid Properties .....	18
5. System Check.....	19
5.1. Description of System Check.....	19
5.2. System Check Results.....	21
6. Operational Conditions during Test.....	22
6.1. General Description of Test Procedures .....	22
6.2. Test Positions.....	22
6.2.1. Face-Held Configuration .....	22
6.2.2. Body-Worn Configuration .....	22
7. Test Results .....	23
7.1. Conducted Power Results .....	23
7.2. SAR Test Results .....	24
7.2.1. UHF .....	24
8. Measurement Uncertainty.....	26
9. Main Test Instruments .....	28
ANNEX A: Test Layout .....	29

**TA Technology (Shanghai) Co., Ltd.**  
**Test Report**

Report No. RXA1206-0413SAR

Page 4 of 69

---

ANNEX B: System Check Results .....	30
ANNEX C: Graph Results .....	32
ANNEX D: Probe Calibration Certificate .....	39
ANNEX E: D450V3 Dipole Calibration Certificate .....	50
ANNEX F: DAE4 Calibration Certificate .....	59
ANNEX G: The EUT Appearances and Test Configuration .....	64

# TA Technology (Shanghai) Co., Ltd.

## Test Report

Report No. RXA1206-0413SAR

Page 5 of 69

---

## 1. General Information

### 1.1. Notes of the Test Report

**TA Technology (Shanghai) Co., Ltd.** guarantees the reliability of the data presented in this test report, which is the results of measurements and tests performed for the items under test on the date and under the conditions stated in this test report and is based on the knowledge and technical facilities available at TA Technology (Shanghai) Co., Ltd. at the time of execution of the test.

**TA Technology (Shanghai) Co., Ltd.** is liable to the client for the maintenance by its personnel of the confidentiality of all information related to the items under test and the results of the test. This report only refers to the item that has undergone the test.

This report standalone dose not constitute or imply by its own an approval of the product by the certification Bodies or competent Authorities. This report cannot be used partially or in full for publicity and/or promotional purposes without previous written approval of **TA Technology (Shanghai) Co., Ltd.** and the Accreditation Bodies, if it applies.

If the electrical report is inconsistent with the printed one, it should be subject to the latter.

### 1.2. Testing Laboratory

Company: TA Technology (Shanghai) Co., Ltd.  
Address: No.145, Jintang Rd, Tangzhen Industry Park, Pudong Shanghai, China  
City: Shanghai  
Post code: 201201  
Country: P. R. China  
Contact: Yang Weizhong  
Telephone: +86-021-50791141/2/3  
Fax: +86-021-50791141/2/3-8000  
Website: <http://www.ta-shanghai.com>  
E-mail: [yangweizhong@ta-shanghai.com](mailto:yangweizhong@ta-shanghai.com)

# TA Technology (Shanghai) Co., Ltd.

## Test Report

Report No. RXA1206-0413SAR

Page 6 of 69

---

### 1.3. Applicant Information

Company: Quanzhou Wouxun Electronics Co., Ltd.  
Address: No.928 Nanhuan Road, Jiangnan High Technology Industry Park, Quanzhou, Fujian, China  
City: Fujian  
Postal Code: 362000  
Country: P.R.China

### 1.4. Manufacturer Information

Company: Quanzhou Wouxun Electronics Co., Ltd.  
Address: No.928 Nanhuan Road, Jiangnan High Technology Industry Park, Quanzhou, Fujian, China  
City: Fujian  
Postal Code: 362000  
Country: P.R.China

**TA Technology (Shanghai) Co., Ltd.**  
**Test Report**

Report No. RXA1206-0413SAR

Page 7 of 69

**1.5. Information of EUT**

**General Information**

Device Type:	Portable Device
Exposure Category:	Uncontrolled Environment / General Population
State of Sample:	Prototype Unit
Product Name:	TWO-WAY RADIO
S/N:	C3L04-7064-P
Hardware Version:	WXSN111012
Software Version:	V2.00
Antenna Type:	External Antenna
Device Operating Configurations:	
Test Modulation:	FM (Analog)
Operating Frequency Range(s):	462.55 MHz ~462.725 MHz(UHF) 467.55 MHz ~467.725 MHz(UHF)
Test Frequency:	462.625 MHz –467.725MHz
Note: 1. The test channels were selected in accordance with the procedures specified in FCC KDB 447498 D01 Mobile Portable RF Exposure v04 Section 6) c).	

# TA Technology (Shanghai) Co., Ltd.

## Test Report

Report No. RXA1206-0413SAR

Page 8 of 69

### Auxiliary Equipment Details

#### AE:Battery

Model: 1A13KG-3  
Manufacturer: Quanzhou Wouxun Electronics Co., Ltd.  
S/N: 69463517 1317 3

Equipment Under Test (EUT) is a TWO-WAY RADIO. SAR is tested for 462.625 - 467.725 MHz only. The EUT has one external antenna that is used for Tx/Rx.

The sample undergoing test was selected by the Client.

Components list please refer to documents of the manufacturer.

### 1.6. The Maximum SAR<sub>1g</sub> Values

Mode	Frequency (MHz)	Position	SAR <sub>1g</sub> (W/kg) 50% PTT duty cycle
UHF	462.625	Face-held	0.925
UHF	462.625	Body-Worn	1.393

### 1.7. Test Date

The test performed on June 25, 2012.



## 2. SAR Measurements System Configuration

### 2.1. SAR Measurement Set-up

The DASY5 system for performing compliance tests consists of the following items:

- A standard high precision 6-axis robot (Stäubli RX family) with controller and software. An arm extension for accommodating the data acquisition electronics (DAE).
- A dosimetric probe, i.e. an isotropic E-field probe optimized and calibrated for usage in tissue simulating liquid. The probe is equipped with an optical surface detector system.
- A data acquisition electronic (DAE) which performs the signal amplification, signal multiplexing, AD-conversion, offset measurements, mechanical surface detection, collision detection, etc. The unit is battery powered with standard or rechargeable batteries. The signal is optically transmitted to the EOC.
- A unit to operate the optical surface detector which is connected to the EOC.
- The Electro-Optical Coupler (EOC) performs the conversion from the optical into a digital electric signal of the DAE. The EOC is connected to the DASY5 measurement server.
- The DASY5 measurement server, which performs all real-time data evaluation for field measurements and surface detection, controls robot movements and handles safety operation. A computer operating Windows 2003
- DASY5 software and SEMCAD data evaluation software.
- Remote control with teach panel and additional circuitry for robot safety such as warning lamps, etc.
- The generic twin phantom enabling the testing of left-hand and right-hand usage.
- The device holder for handheld mobile phones.
- Tissue simulating liquid mixed according to the given recipes.
- System validation dipoles allowing to validate the proper functioning of the system.

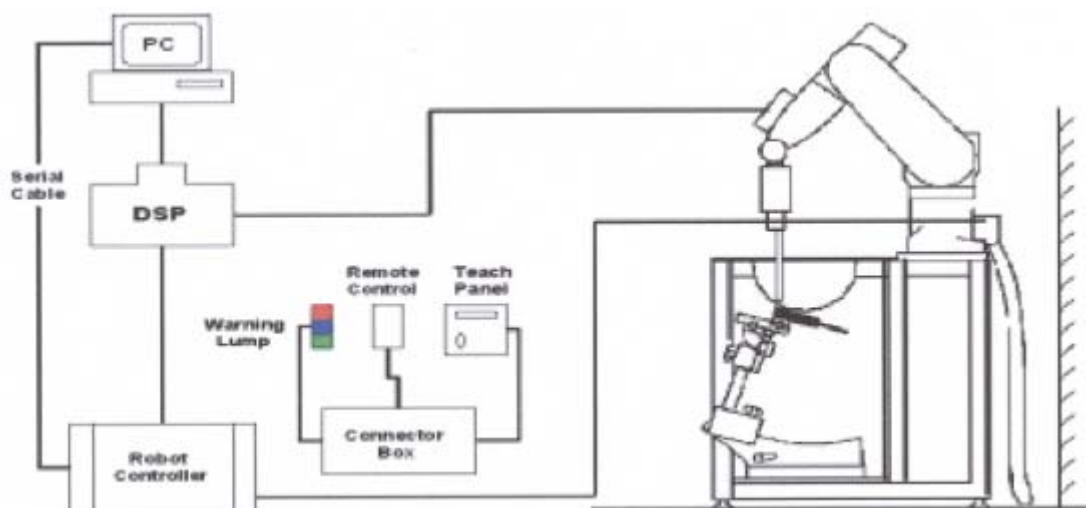


Figure 1. SAR Lab Test Measurement Set-up

## 2.2. DASY5 E-field Probe System

The SAR measurements were conducted with the dosimetric probe EX3DV4 (manufactured by SPEAG), designed in the classical triangular configuration and optimized for dosimetric evaluation.

### 2.2.1. EX3DV4 Probe Specification

Construction	Symmetrical design with triangular core Built-in shielding against static charges PEEK enclosure material (resistant to organic solvents, e.g., DGBE)
Calibration	ISO/IEC 17025 calibration service available
Frequency	10 MHz to > 6 GHz Linearity: $\pm 0.2$ dB (30 MHz to 6 GHz)
Directivity	$\pm 0.3$ dB in HSL (rotation around probe axis) $\pm 0.5$ dB in tissue material (rotation normal to probe axis)
Dynamic Range	10 $\mu$ W/g to > 100 mW/g Linearity:  $\pm 0.2$ dB (noise: typically < 1 $\mu$ W/g)
Dimensions	Overall length: 330 mm (Tip: 20 mm) Tip diameter: 2.5 mm (Body: 12 mm) Typical distance from probe tip to dipole centers: 1 mm
Application	High precision dosimetric measurements in any exposure scenario (e.g., very strong gradient fields). Only probe which enables compliance testing for frequencies up to 6 GHz with precision of better 30%.



Figure 2. EX3DV4 E-field Probe



Figure 3. EX3DV4 E-field probe

### 2.2.2. E-field Probe Calibration

Each probe is calibrated according to a dosimetric assessment procedure with accuracy better than  $\pm 10\%$ . The spherical isotropy was evaluated and found to be better than  $\pm 0.25\text{dB}$ . The sensitivity parameters (NormX, NormY, NormZ), the diode compression parameter (DCP) and the conversion factor (ConvF) of the probe are tested.

The free space E-field from amplified probe outputs is determined in a test chamber. This is performed in a TEM cell for frequencies below 1 GHz, and in a wave guide above 1 GHz for free space. For the free space calibration, the probe is placed in the volumetric center of the cavity and at the proper orientation with the field. The probe is then rotated 360 degrees.

E-field temperature correlation calibration is performed in a flat phantom filled with the appropriate simulated brain tissue. The measured free space E-field in the medium correlates to temperature rise in a dielectric medium. For temperature correlation calibration a RF transparent thermistor-based temperature probe is used in conjunction with the E-field probe.

$$\text{SAR} = C \frac{\Delta T}{\Delta t}$$

Where:  $\Delta t$  = Exposure time (30 seconds),  
C = Heat capacity of tissue (brain or muscle),  
 $\Delta T$  = Temperature increase due to RF exposure.  
Or

$$\text{SAR} = \frac{|E|^2 \sigma}{\rho}$$

Where:  
 $\sigma$  = Simulated tissue conductivity,  
 $\rho$  = Tissue density (kg/m<sup>3</sup>).

## 2.3. Other Test Equipment

### 2.3.1. Device Holder for Transmitters

The DASY device holder is designed to cope with the different positions given in the standard.

It has two scales for device rotation (with respect to the body axis) and device inclination (with respect to the line between the ear reference points). The rotation centers for both scales is the ear reference point (ERP). Thus the device needs no repositioning when changing the angles.

The DASY device holder is constructed of low-loss POM material. The amount of dielectric material

has been reduced in the closest vicinity of the device, since measurements have suggested that the inference of the clamp on the test results could thus be lowered.



**Figure 4. Device Holder**

### 2.3.2. Phantom

Phantom for compliance testing of handheld and body-mounted wireless devices in the frequency range of 30 MHz to 6 GHz. ELI is fully compatible with the IEC 62209-2 standard and all known tissue-simulating liquids. ELI has been optimized regarding its performance and can be integrated into our standard phantom tables. A cover prevents evaporation of the liquid. Reference markings on the phantom allow installation of the complete setup, including all predefined phantom positions and measurement grids, by teaching three points. The phantom is compatible with all SPEAG dosimetric probes and dipoles.

Shell Thickness	2±0.2 mm
Filling Volume	Approx. 30 liters
Dimensions	190×600×0 mm (H x L x W)



Figure 5.ELI4 Phantom

### 2.4. Scanning Procedure

The DASY5 installation includes predefined files with recommended procedures for measurements and validation. They are read-only document files and destined as fully defined but unmeasured masks. All test positions (head or body-worn) are tested with the same configuration of test steps differing only in the grid definition for the different test positions.

- The “reference” and “drift” measurements are located at the beginning and end of the batch process. They measure the field drift at one single point in the liquid over the complete procedure. The indicated drift is mainly the variation of the DUT’s output power and should vary max. ± 5 %.
- The “surface check” measurement tests the optical surface detection system of the DASY5 system by repeatedly detecting the surface with the optical and mechanical surface detector and comparing the results. The output gives the detecting heights of both systems, the difference between the two systems and the standard deviation of the detection repeatability. Air bubbles or refraction in the liquid due to separation of the sugar-water mixture gives poor repeatability (above ± 0.1mm). To prevent wrong results tests are only executed when the liquid is free of air bubbles. The difference between the optical surface detection and the actual surface depends on the probe and is specified with each probe. (It does not depend on the surface reflectivity or the probe angle to the surface within ± 30°.)

- Area Scan

The Area Scan is used as a fast scan in two dimensions to find the area of high field values before running a detailed measurement around the hot spot. Before starting the area scan a grid spacing of 20 mm x 20 mm is set. During the scan the distance of the probe to the phantom remains unchanged.

After finishing area scan, the field maxima within a range of 2 dB will be ascertained.

- Zoom Scan

Zoom Scans are used to estimate the peak spatial SAR values within a cubic averaging volume containing 1 g and 10 g of simulated tissue. The default Zoom Scan is done by 5x5x7 points within a cube whose base is centered around the maxima found in the preceding area scan.

- Spatial Peak Detection

The procedure for spatial peak SAR evaluation has been implemented and can determine values of masses of 1g and 10g, as well as for user-specific masses. The DASY5 system allows evaluations that combine measured data and robot positions, such as:

- maximum search
- extrapolation
- boundary correction
- peak search for averaged SAR

During a maximum search, global and local maxima searches are automatically performed in 2-D after each Area Scan measurement with at least 6 measurement points. It is based on the evaluation of the local SAR gradient calculated by the Quadratic Shepard's method. The algorithm will find the global maximum and all local maxima within -2 dB of the global maxima for all SAR distributions.

Extrapolation routines are used to obtain SAR values between the lowest measurement points and the inner phantom surface. The extrapolation distance is determined by the surface detection distance and the probe sensor offset. Several measurements at different distances are necessary for the extrapolation. Extrapolation routines require at least 10 measurement points in 3-D space. They are used in the Zoom Scan to obtain SAR values between the lowest measurement points and the inner phantom surface. The routine uses the modified Quadratic Shepard's method for extrapolation. For a grid using 5x5x7 measurement points with 8mm resolution amounting to 175 measurement points, the uncertainty of the extrapolation routines is less than 1% for 1g and 10g cubes.

- A Z-axis scan measures the total SAR value at the x-and y-position of the maximum SAR value found during the cube 5x5x7 scan. The probe is moved away in z-direction from the bottom of the SAM phantom in 5mm steps.

## 2.5. Data Storage and Evaluation

### 2.5.1. Data Storage

The DASY5 software stores the acquired data from the data acquisition electronics as raw data (in microvolt readings from the probe sensors), together with all necessary software parameters for the data evaluation (probe calibration data, liquid parameters and device frequency and modulation data) in measurement files with the extension “.DA4”. The software evaluates the desired unit and format for output each time the data is visualized or exported. This allows verification of the complete software setup even after the measurement and allows correction of incorrect parameter settings. For example, if a measurement has been performed with a wrong crest factor parameter in the device setup, the parameter can be corrected afterwards and the data can be re-evaluated.

The measured data can be visualized or exported in different units or formats, depending on the selected probe type ([V/m], [A/m], [°C], [mW/g], [mW/cm<sup>2</sup>], [dBrel], etc.). Some of these units are not available in certain situations or show meaningless results, e.g., a SAR output in a lossless media will always be zero. Raw data can also be exported to perform the evaluation with other software packages.

### 2.5.2. Data Evaluation by SEMCAD

The SEMCAD software automatically executes the following procedures to calculate the field units from the microvolt readings at the probe connector. The parameters used in the evaluation are stored in the configuration modules of the software:

Probe parameters:	- Sensitivity	Normi, a <sub>i0</sub> , a <sub>i1</sub> , a <sub>i2</sub>
	- Conversion factor	ConvF <sub>i</sub>
	- Diode compression point	Dcp <sub>i</sub>
Device parameters:	- Frequency	f
	- Crest factor	cf
Media parameters:	- Conductivity	σ
	- Density	ρ

These parameters must be set correctly in the software. They can be found in the component documents or they can be imported into the software from the configuration files issued for the DASY5 components. In the direct measuring mode of the multimeter option, the parameters of the actual system setup are used. In the scan visualization and export modes, the parameters stored in the corresponding document files are used.

The first step of the evaluation is a linearization of the filtered input signal to account for the compression characteristics of the detector diode. The compensation depends on the input signal, the diode type and the DC-transmission factor from the diode to the evaluation electronics.

If the exciting field is pulsed, the crest factor of the signal must be known to correctly compensate for peak power. The formula for each channel can be given as:

$$V_i = U_i + U_i^2 \cdot c f / d c p_i$$

With  $V_i$  = compensated signal of channel i (i = x, y, z)

$U_i$  = input signal of channel i (i = x, y, z)

$cf$  = crest factor of exciting field (DASY parameter)

$dcp_i$  = diode compression point (DASY parameter)

From the compensated input signals the primary field data for each channel can be evaluated:

E-field probes:  $E_i = (V_i / Norm_i \cdot ConvF)^{1/2}$

H-field probes:  $H_i = (V_i)^{1/2} \cdot (a_{i0} + a_{i1} f + a_{i2} f^2) / f$

With  $V_i$  = compensated signal of channel i (i = x, y, z)

$Norm_i$  = sensor sensitivity of channel i (i = x, y, z)  
[mV/(V/m)<sup>2</sup>] for E-field Probes

$ConvF$  = sensitivity enhancement in solution

$a_{ij}$  = sensor sensitivity factors for H-field probes

$f$  = carrier frequency [GHz]

$E_i$  = electric field strength of channel i in V/m

$H_i$  = magnetic field strength of channel i in A/m

The RSS value of the field components gives the total field strength (Hermitian magnitude):

$$E_{tot} = (E_x^2 + E_y^2 + E_z^2)^{1/2}$$

The primary field data are used to calculate the derived field units.

$$SAR = (E_{tot})^2 \cdot \sigma / (\rho \cdot 1000)$$

with **SAR** = local specific absorption rate in mW/g

**$E_{tot}$**  = total field strength in V/m

**$\sigma$**  = conductivity in [mho/m] or [Siemens/m]

**$\rho$**  = equivalent tissue density in g/cm<sup>3</sup>

Note that the density is normally set to 1 (or 1.06), to account for actual brain density rather than the density of the simulation liquid. The power flow density is calculated assuming the excitation field to be a free space field.

$$P_{pwe} = E_{tot}^2 / 3770 \quad \text{or} \quad P_{pwe} = H_{tot}^2 \cdot 37.7$$

with  **$P_{pwe}$**  = equivalent power density of a plane wave in mW/cm<sup>2</sup>

**$E_{tot}$**  = total electric field strength in V/m

**$H_{tot}$**  = total magnetic field strength in A/m

### 3. Laboratory Environment

**Table 1: The Requirements of the Ambient Conditions**

Temperature	Min. = 18°C, Max. = 25 °C
Relative humidity	Min. = 30%, Max. = 70%
Ground system resistance	< 0.5 $\Omega$
Ambient noise is checked and found very low and in compliance with requirement of standards.	
Reflection of surrounding objects is minimized and in compliance with requirement of standards.	



## 4. Tissue-equivalent Liquid

### 4.1. Tissue-equivalent Liquid Ingredients

The liquid is consisted of water, sugar, salt, Preventol and Cellulose. The liquid has previously been proven to be suited for worst-case. The Table 2 and Table 3 show the detail solution. It's satisfying the latest tissue dielectric parameters requirements proposed by the OET 65.

**Table 2: Composition of the Head Tissue Equivalent Matter**

MIXTURE%	FREQUENCY(Brain) 450MHz
Water	38.56
Sugar	56.32
Salt	3.95
Preventol	0.10
Cellulose	1.07
Dielectric Parameters Target Value	f=450MHz $\epsilon=43.5$ $\sigma=0.87$

**Table 3: Composition of the Body Tissue Equivalent Matter**

MIXTURE%	FREQUENCY(Body) 450MHz
Water	51.16
Sugar	46.78
Salt	1.49
Preventol	0.10
Cellulose	0.47
Dielectric Parameters Target Value	f=450MHz $\epsilon=56.7$ $\sigma=0.94$

**TA Technology (Shanghai) Co., Ltd.**  
**Test Report**

**4.2. Tissue-equivalent Liquid Properties**

**Table 4: Dielectric Performance of Head Tissue Simulating Liquid**

Frequency	Description	Dielectric Parameters		Temp °C
		$\epsilon_r$	$\sigma$ (s/m)	
<b>450MHz (head)</b>	Target value ±5% window	43.50 41.33 — 45.68	0.87 0.83 — 0.91	22.0
	Measurement value 2012-6-25	44.26	0.86	21.5

**Table 5: Dielectric Performance of Body Tissue Simulating Liquid**

Frequency	Description	Dielectric Parameters		Temp °C
		$\epsilon_r$	$\sigma$ (s/m)	
<b>450MHz (body)</b>	Target value ±5% window	56.70 53.87 — 59.54	0.94 0.89 — 0.99	22.0
	Measurement value 2012-6-25	55.55	0.97	21.5

## 5. System Check

### 5.1. Description of System Check

The manufacturer calibrates the probes annually. Dielectric parameters of the tissue simulants were measured every day using the dielectric probe kit and the network analyser. A system check measurement was made following the determination of the dielectric parameters of the simulant, using the dipole validation kit. A power level of 398 mW was supplied to the dipole antenna, which was placed under the flat section of the twin SAM phantom. The system check results (dielectric parameters and SAR values) are given in the table 6 and table 7.

System check results have to be equal or near the values determined during dipole calibration with the relevant liquids and test system ( $\pm 10\%$ ).

System check is performed regularly on all frequency bands where tests are performed with the DASY5 system.

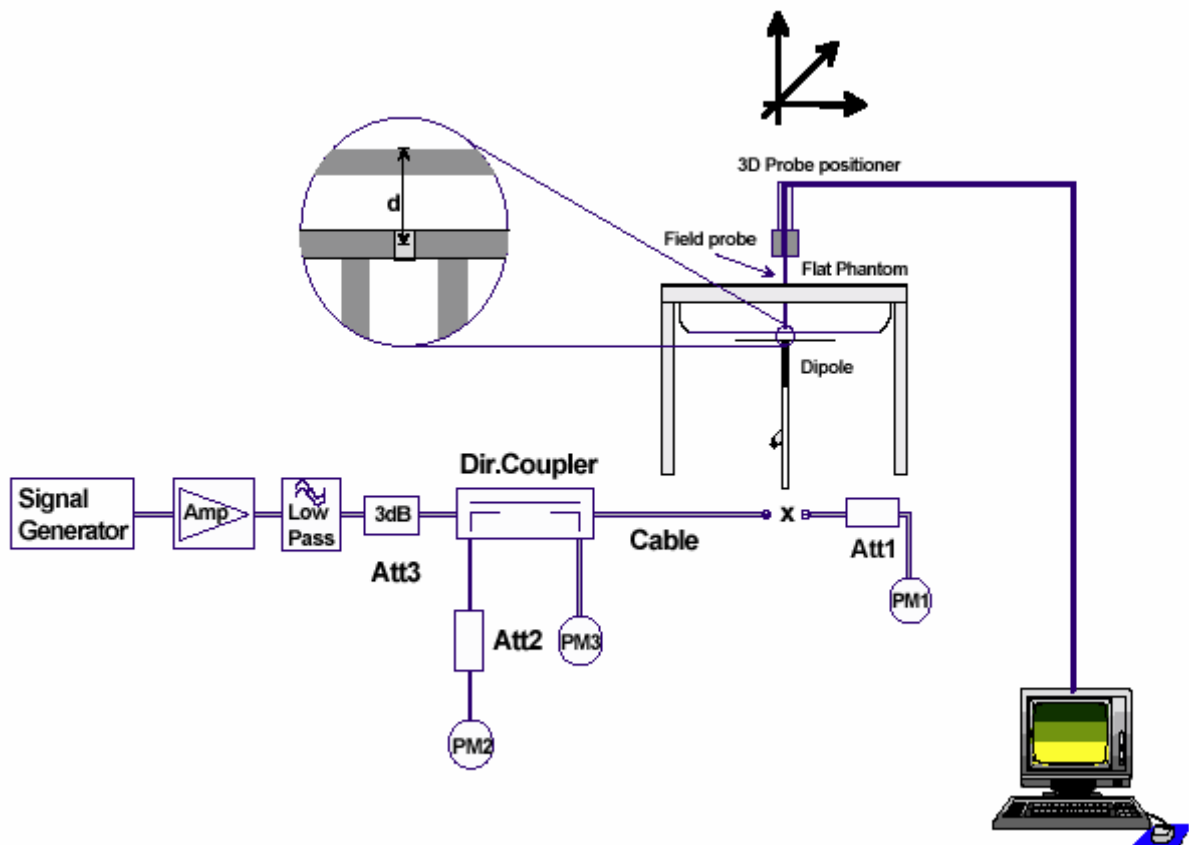


Figure 6. System Check Set-up

**TA Technology (Shanghai) Co., Ltd.**  
**Test Report**

**Justification for Extended SAR Dipole Calibrations**

Usage of SAR dipoles calibrated less than 2 years ago but more than 1 year ago were confirmed in maintaining return loss (< - 20 dB, within 20% of prior calibration) and impedance (within 5 ohm from prior calibration) requirements per extended calibrations in KDB Publication 450824:

Dipole D450V3 SN: 1065				
Head Liquid				
Date of Measurement	Return Loss(dB)	$\Delta$ %	Impedance ( $\Omega$ )	$\Delta\Omega$
11/09/2010	-20.5	3.4%	59.2	1.4 $\Omega$
11/08/2011	-21.2		60.6	
Body Liquid				
Date of Measurement	Return Loss(dB)	$\Delta$ %	Impedance ( $\Omega$ )	$\Delta\Omega$
11/09/2010	-20.4	2.9%	56.5	1.6 $\Omega$
11/08/2011	-19.8		58.1	

**TA Technology (Shanghai) Co., Ltd.**  
**Test Report**

**5.2. System Check Results**

**Table 6: System Check for Head Tissue Simulating Liquid**

Frequency	Test Date	Dielectric Parameters		Temp	398mW Measured SAR <sub>1g</sub>	1W Normalized SAR <sub>1g</sub>	1W Target SAR <sub>1g</sub> (±10% Deviation)
		$\epsilon_r$	$\sigma$ (s/m)	(°C)	(W/kg)		
450MHz	2012-6-25	44.26	0.86	21.5	2.00	5.03	4.76 (4.28 ~ 5.24)

Note: 1. The graph results see ANNEX B.  
2. Target Value derives from the calibration certificate.

**Table 7: System Check for Body Tissue Simulating Liquid**

Frequency	Test Date	Dielectric Parameters		Temp	398mW Measured SAR <sub>1g</sub>	1W Normalized SAR <sub>1g</sub>	1W Target SAR <sub>1g</sub> (±10% Deviation)
		$\epsilon_r$	$\sigma$ (s/m)	(°C)	(W/kg)		
450MHz	2012-6-25	55.55	0.97	21.5	1.78	4.47	4.51 (4.06 ~ 4.96)

Note: 1. The graph results see ANNEX B.  
2. Target Value derives from the calibration certificate.

## **6. Operational Conditions during Test**

### **6.1. General Description of Test Procedures**

The spatial peak SAR values were assessed for UHF (462.625 MHz, 467.725 MHz) systems. Battery and accessories shall be specified by the manufacturer. The EUT battery must be fully charged and checked periodically during the test to ascertain uniform power output.

### **6.2. Test Positions**

#### **6.2.1. Face-Held Configuration**

The front of the EUT is towards the phantom.

The front surface of the EUT is positioned at 25mm parallel to the flat phantom.

The surface of the EUT antenna is positioned at 40mm to the flat phantom.

#### **6.2.2. Body-Worn Configuration**

The back of the EUT is towards the phantom.

Belt clip directed tightly to touch the bottom of the flat phantom.

The surface of the EUT antenna is positioned at 27mm to the flat phantom.

## 7. Test Results

### 7.1. Conducted Power Results

**Table 8: Conducted Power Measurement Results**

Analog UHF (12.5KHz)	Conducted Power	
	462.625 MHz	467.725MHz
Test Result (dBm)	29.01	28.92

**TA Technology (Shanghai) Co., Ltd.**  
**Test Report**

**7.2. SAR Test Results**

**7.2.1. UHF**

**Table 9: SAR Values (UHF)**

Limits	1 g Average (W/kg)		Power Drift (dB)	Graph Results
	1.6		± 0.21	
Frequency	Duty Cycle		Power Drift (dB)	
	100%	50%		
<b>The EUT display towards phantom for 12.5 KHz (Analog, Face Held)</b>				
462.625 MHz	1.840	0.920	-0.023	Figure 9
467.725 MHz	1.660	0.830	-0.059	Figure 10
<b>The EUT display towards ground for 12.5 KHz (Analog, Body-Worn)</b>				
462.625 MHz	2.640	1.320	-0.014	Figure 11
467.725 MHz	2.420	1.210	-0.041	Figure 12
<b>The worst Case of Body-Worn with Earphone for 12.5KHz(Analog)</b>				
462.625 MHz	2.740	1.370	-0.072	Figure 13



**TA Technology (Shanghai) Co., Ltd.**  
**Test Report**

**Table 10: SAR Values are scaled for the power drift**

Limits	1 g Average (W/kg)		Power Drift (dB)	+ Power Drift 10 <sup>^(dB/10)</sup>	SAR 1g (W/kg) (include + power drift)	
	1.6		± 0.21		Duty Cycle	
Frequency	Duty Cycle		Power Drift(dB)		Duty Cycle	
	100%	50%			100%	50%
<b>The EUT display towards phantom for 12.5 KHz (Analog, Face Held)</b>						
462.625 MHz	1.840	0.920	0.023	1.005	1.850	0.925
467.725 MHz	1.660	0.830	0.059	1.014	1.683	0.841
<b>The EUT display towards ground for 12.5 KHz (Analog, Body-Worn)</b>						
462.625 MHz	2.640	1.320	0.014	1.003	2.649	1.324
467.725 MHz	2.420	1.210	0.041	1.009	2.443	1.221
<b>The worst Case of Body-Worn with Earphone for 12.5KHz(Analog)</b>						
462.625 MHz	2.740	1.370	0.072	1.017	2.786	1.393
<p><b>Note:</b> 1. The value with blue color is the maximum SAR Value of each test band.                  2. The SAR levels reported are based on 50% PTT duty factor including SAR droop.                  3. The Exposure category about EUT: Uncontrolled Environment / General Population, so the SAR limit is 1.6 W/kg averaged over any 1 gram of tissue.</p>						

**TA Technology (Shanghai) Co., Ltd.**  
**Test Report**

Report No. RXA1206-0413SAR

Page 26 of 69

**8. Measurement Uncertainty**

No.	source	Type	Uncertainty Value (%)	Probability Distribution	k	c <sub>i</sub>	Standard uncertainty u <sub>i</sub> (%)	Degree of freedom V <sub>eff</sub> or v <sub>i</sub>
1	System repetivity	A	0.5	N	1	1	0.5	9
Measurement system								
2	-probe calibration	B	6.7	N	1	1	6.7	∞
3	-axial isotropy of the probe	B	4.7	R	$\sqrt{3}$	$\sqrt{0.5}$	1.9	∞
4	- Hemispherical isotropy of the probe	B	9.4	R	$\sqrt{3}$	$\sqrt{0.5}$	3.9	∞
6	-boundary effect	B	1.9	R	$\sqrt{3}$	1	1.1	∞
7	-probe linearity	B	4.7	R	$\sqrt{3}$	1	2.7	∞
8	- System detection limits	B	1.0	R	$\sqrt{3}$	1	0.6	∞
9	-readout Electronics	B	1.0	N	1	1	1.0	∞
10	-response time	B	0	R	$\sqrt{3}$	1	0	∞
11	-integration time	B	4.32	R	$\sqrt{3}$	1	2.5	∞
12	-noise	B	0	R	$\sqrt{3}$	1	0	∞
13	-RF Ambient Conditions	B	3	R	$\sqrt{3}$	1	1.73	∞
14	-Probe Positioner Mechanical Tolerance	B	0.4	R	$\sqrt{3}$	1	0.2	∞
15	-Probe Positioning with respect to Phantom Shell	B	2.9	R	$\sqrt{3}$	1	1.7	∞
16	-Extrapolation, interpolation and Integration Algorithms for Max. SAR Evaluation	B	3.9	R	$\sqrt{3}$	1	2.3	∞
Test sample Related								
17	-Test Sample Positioning	A	2.9	N	1	1	2.9	71
18	-Device Holder Uncertainty	A	4.1	N	1	1	4.1	5
19	-Output Power Variation - SAR drift measurement	B	5.0	R	$\sqrt{3}$	1	2.9	∞
Physical parameter								

**TA Technology (Shanghai) Co., Ltd.**  
**Test Report**

Report No. RXA1206-0413SAR

Page 27 of 69

20	-phantom	B	4.0	R	$\sqrt{3}$	1	2.3	$\infty$
21	-liquid conductivity (deviation from target)	B	5.0	R	$\sqrt{3}$	0.64	1.8	$\infty$
22	-liquid conductivity (measurement uncertainty)	B	2.5	N	1	0.64	1.6	9
23	-liquid permittivity (deviation from target)	B	5.0	R	$\sqrt{3}$	0.6	1.7	$\infty$
24	-liquid permittivity (measurement uncertainty)	B	2.5	N	1	0.6	1.5	9
Combined standard uncertainty		$u_c = \sqrt{\sum_{i=1}^{21} c_i^2 u_i^2}$					11.88	
Expanded uncertainty (confidence interval of 95 %)		$u_e = 2u_c$		N	k=2		23.76	

**TA Technology (Shanghai) Co., Ltd.**  
**Test Report**

## 9. Main Test Instruments

**Table 11: List of Main Instruments**

No.	Name	Type	Serial Number	Calibration Date	Valid Period
01	Network analyzer	Agilent 8753E	US37390326	September 12, 2011	One year
02	Dielectric Probe Kit	Agilent 85070E	US44020115	No Calibration Requested	
03	Power meter	Agilent E4417A	GB41291714	March 11, 2012	One year
04	Power sensor	Agilent N8481H	MY50350004	September 25, 2011	One year
05	Power sensor	E9327A	US40441622	September 24, 2011	One year
06	Signal Generator	HP 8341B	2730A00804	September 12, 2011	One year
07	Amplifier	IXA-020	0401	No Calibration Requested	
08	E-field Probe	EX3DV4	3816	October 3, 2011	One year
09	DAE	DAE4	1291	October 10, 2011	One year
10	Validation Kit 450MHz	D450V3	1065	November 9, 2010	Two years
11	Dual directional coupler	778D-012	50519	March 26, 2012	One year
12	Temperature Probe	JM222	AA1009129	March 15, 2012	One year
13	Hygrothermograph	WS-1	64591	September 28, 2011	One year

\*\*\*\*\*END OF REPORT \*\*\*\*\*

## ANNEX A: Test Layout



Picture 1: Specific Absorption Rate Test Layout



Picture 2: Liquid depth in the Flat Phantom (450 MHz, 15.4cm depth)

## ANNEX B: System Check Results

### System Performance Check at 450 MHz Head TSL

DUT: Dipole450 MHz; Type: D450V3; Serial: 1065

Date/Time: 6/25/2012 9:42:21 AM

Communication System: CW; Frequency: 450 MHz; Duty Cycle: 1:1

Medium parameters used:  $f = 450$  MHz;  $\sigma = 0.86$  mho/m;  $\epsilon_r = 44.26$ ;  $\rho = 1000$  kg/m<sup>3</sup>

Ambient Temperature: 22.3 °C      Liquid Temperature: 21.5 °C

DASY5 Configuration:

Probe: EX3DV4 - SN3816; ConvF(9.97, 9.97, 9.97) Calibrated: 10/3/2011

Electronics: DAE4 Sn1291; Calibrated: 10/10/2011

Phantom: ELI 4.0; Type: QDOVA001BA;

Measurement SW: DASY5, V5.2 Build 162; SEMCAD X Version 14.0 Build 59

**d=15mm, Pin=398mW/Area Scan (41x131x1):** Measurement grid: dx=15mm, dy=15mm

Maximum value of SAR (interpolated) = 2.15 mW/g

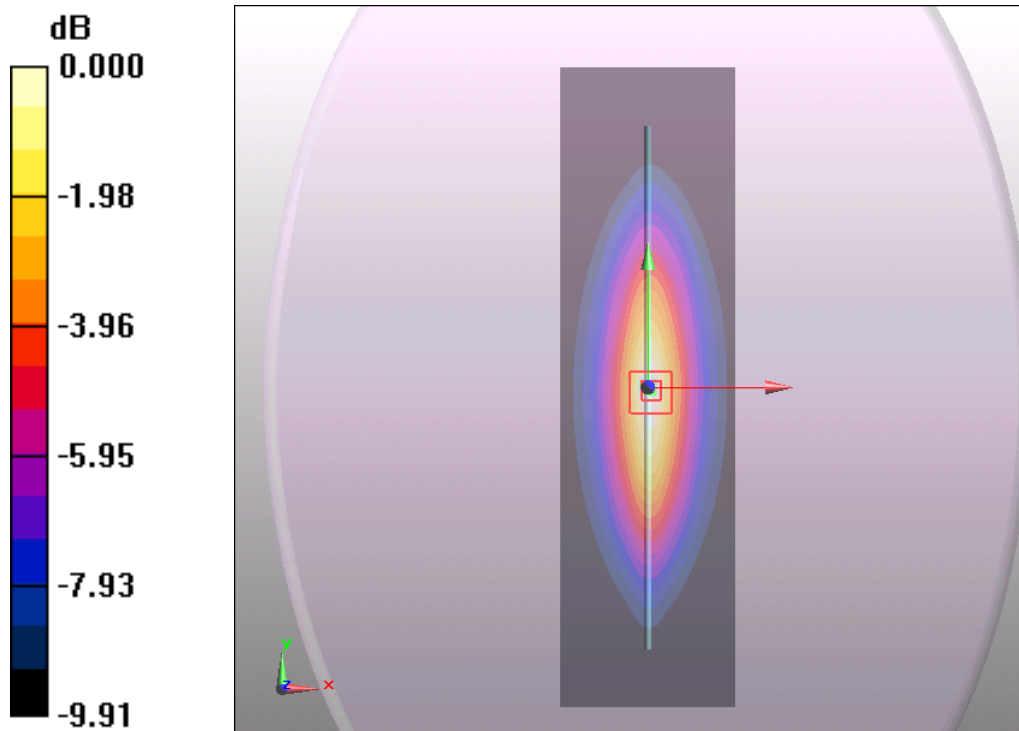
**d=15mm, Pin=398mW/Zoom Scan (7x7x7)/Cube 0:** Measurement grid: dx=5mm, dy=5mm, dz=5mm

Reference Value = 52.2 V/m; Power Drift = -0.033 dB

Peak SAR (extrapolated) = 3.29 W/kg

**SAR(1 g) = 2.00 mW/g; SAR(10 g) = 1.31 mW/g**

Maximum value of SAR (measured) = 2.15 mW/g



0 dB = 2.15mW/g

Figure 7 System Performance Check 450MHz 398mW

### System Performance Check at 450 MHz Body TSL

DUT: Dipole450 MHz; Type: D450V3; Serial: 1065

Date/Time: 6/25/2012 8:01:21 AM

Communication System: CW; Frequency: 450 MHz; Duty Cycle: 1:1

Medium parameters used:  $f = 450$  MHz;  $\sigma = 0.97$  mho/m;  $\epsilon_r = 55.55$ ;  $\rho = 1000$  kg/m<sup>3</sup>

Ambient Temperature: 22.3 °C      Liquid Temperature: 21.5 °C

DASY5 Configuration:

Probe: EX3DV4 - SN3816; ConvF(10.83, 10.83, 10.83) Calibrated: 10/3/2011

Electronics: DAE4 Sn1291; Calibrated: 10/10/2011

Phantom: ELI 4.0; Type: QDOVA001BA;

Measurement SW: DASY5, V5.2 Build 162; SEMCAD X Version 14.0 Build 59

**d=15mm, Pin=398mW/Area Scan (61x221x1):** Measurement grid: dx=15mm, dy=15mm  
Maximum value of SAR (interpolated) = 1.9 mW/g

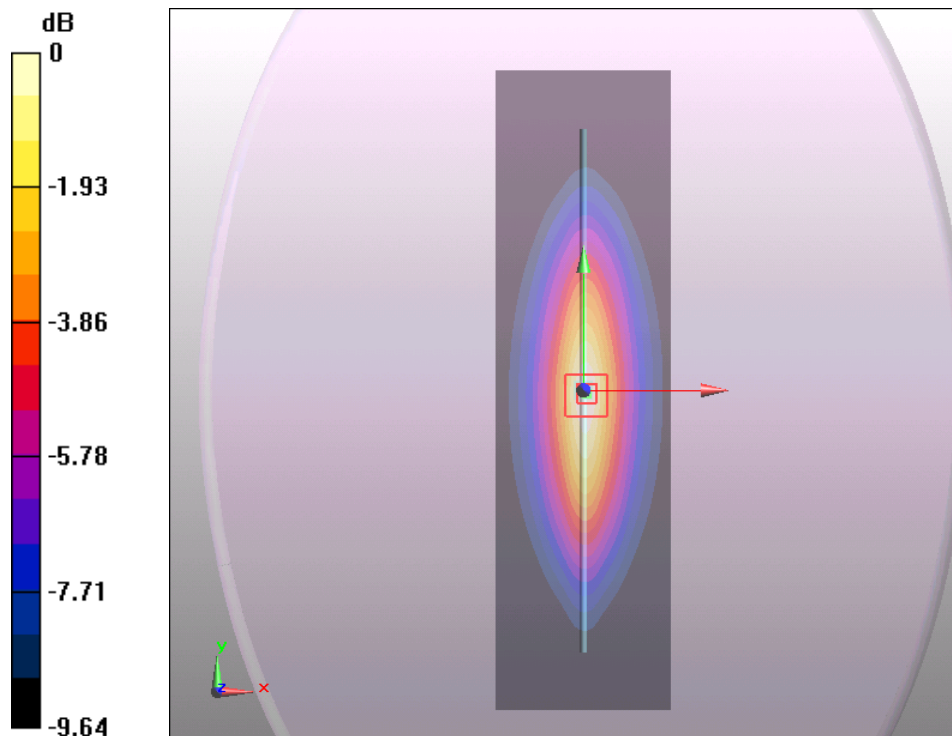
**d=15mm, Pin=398mW/Zoom Scan (7x7x7)/Cube 0:** Measurement grid: dx=5mm, dy=5mm, dz=5mm

Reference Value = 44.7 V/m; Power Drift = -0.014 dB

Peak SAR (extrapolated) = 2.64 W/kg

**SAR(1 g) = 1.78 mW/g; SAR(10 g) = 1.17 mW/g**

Maximum value of SAR (measured) = 1.89 mW/g



0 dB = 1.89mW/g

Figure 8 System Performance Check 450MHz 398mW

## ANNEX C: Graph Results

### Face Held, Front towards Phantom 462.625 MHz(12.5 KHz Channel Spacing)

Date/Time: 6/25/2012 2:04:07 PM

Communication System: PTT 450; Frequency: 462.625 MHz; Duty Cycle: 1:1

Medium parameters used (interpolated):  $f = 462.625$  MHz;  $\sigma = 0.87$  mho/m;  $\epsilon_r = 44$ ;  $\rho = 1000$  kg/m<sup>3</sup>

Ambient Temperature: 22.3 °C      Liquid Temperature: 21.5 °C

Phantom section: Flat Section

DASY5 Configuration:

Probe: EX3DV4 - SN3816; ConvF(9.97, 9.97, 9.97); Calibrated: 10/3/2011

Electronics: DAE4 Sn1291; Calibrated: 10/10/2011

Phantom: ELI 4.0; Type: QDOVA001BA;

Measurement SW: DASY5, V5.2 Build 162; SEMCAD X Version 14.0 Build 59

**Towards Phantom 462.625 MHz/Area Scan (51x161x1):** Measurement grid: dx=20mm, dy=20mm  
Maximum value of SAR (interpolated) = 1.95 mW/g

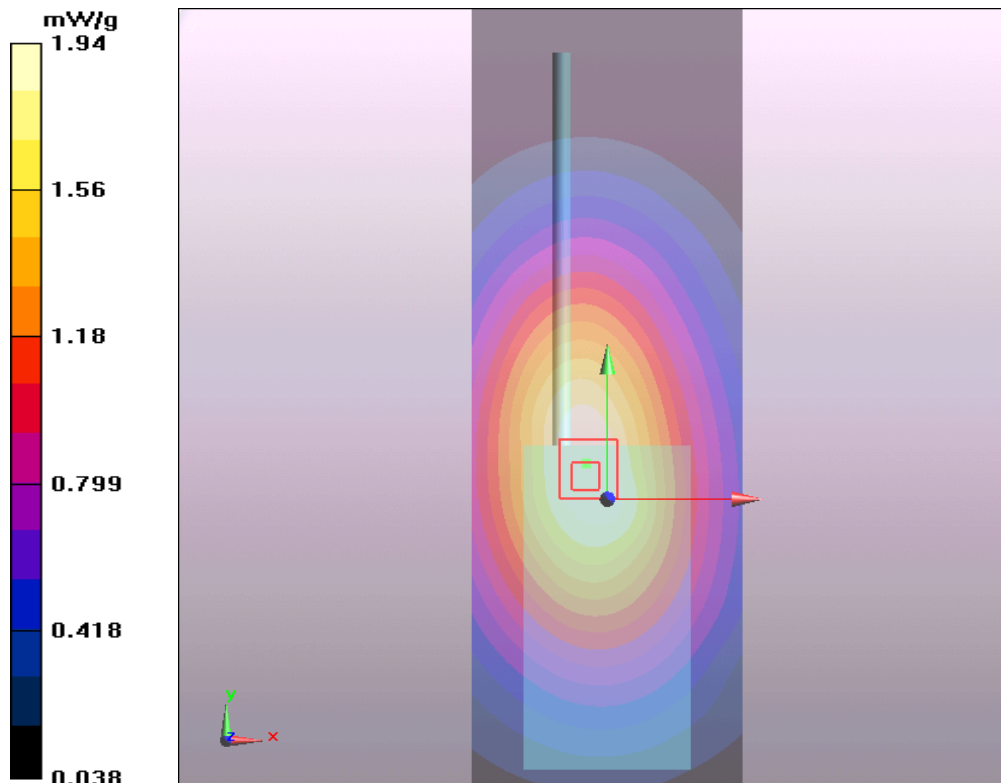
**Towards Phantom 462.625 MHz/Zoom Scan (5x5x7)/Cube 0:** Measurement grid: dx=8mm, dy=8mm, dz=5mm

Reference Value = 46.7 V/m; Power Drift = -0.023 dB

Peak SAR (extrapolated) = 2.37 W/kg

**SAR(1 g) = 1.84 mW/g; SAR(10 g) = 1.39 mW/g**

Maximum value of SAR (measured) = 1.94 mW/g





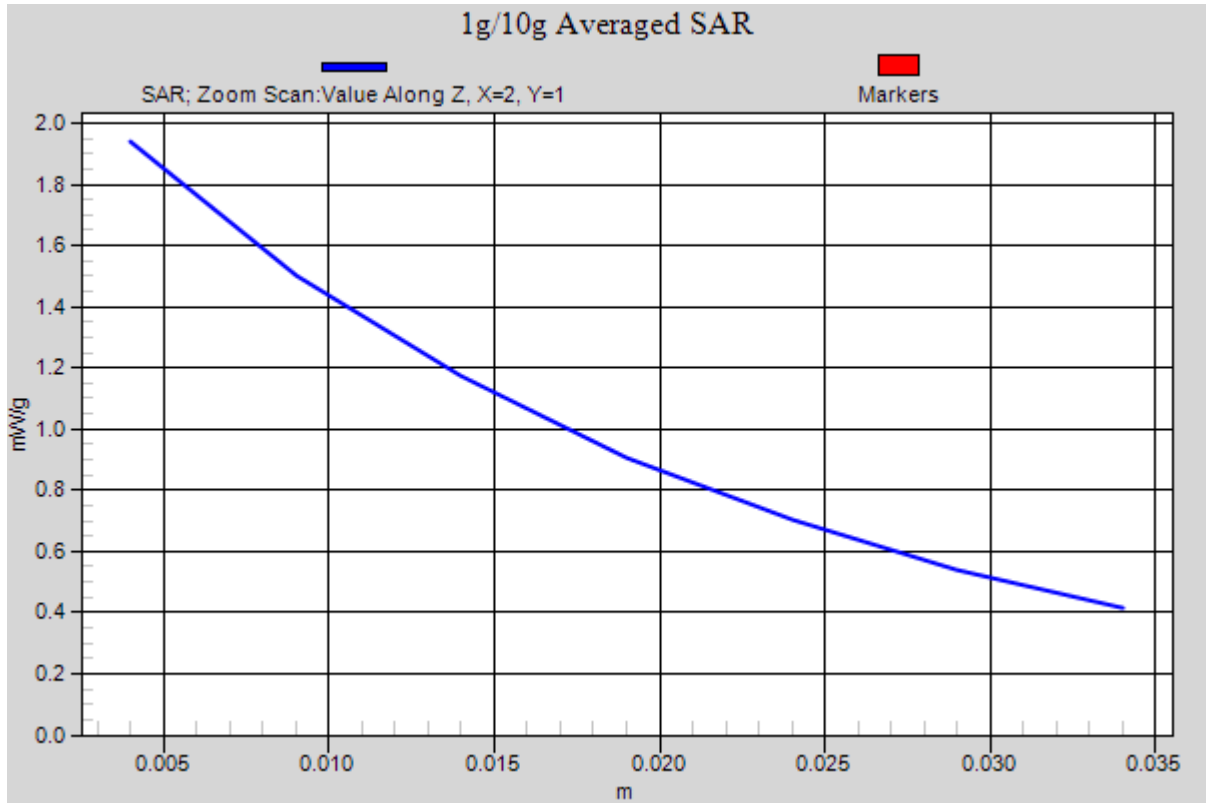


Figure 9 Face Held, Front towards Phantom 462.625 MHz

**Face Held, Front towards Phantom 467.725 MHz(12.5 KHz Channel Spacing)**

Date/Time: 6/25/2012 2:25:18 PM

Communication System: PTT 450; Frequency: 467.725 MHz;Duty Cycle: 1:1

Medium parameters used:  $f = 468$  MHz;  $\sigma = 0.875$  mho/m;  $\epsilon_r = 43.9$ ;  $\rho = 1000$  kg/m<sup>3</sup>

Ambient Temperature:22.3 °C      Liquid Temperature: 21.5°C

Phantom section: Flat Section

DASY5 Configuration:

Probe: EX3DV4 - SN3816; ConvF(9.97, 9.97, 9.97); Calibrated: 10/3/2011

Electronics: DAE4 Sn1291; Calibrated: 10/10/2011

Phantom: ELI 4.0; Type: QDOVA001BA;

Measurement SW: DASY5, V5.2 Build 162; SEMCAD X Version 14.0 Build 59

**Towards Phantom 467.725 MHz/Area Scan (51x161x1):** Measurement grid: dx=20mm, dy=20mm  
Maximum value of SAR (interpolated) = 1.74 mW/g

**Towards Phantom 467.725 MHz/Zoom Scan (5x5x7)/Cube 0:** Measurement grid: dx=8mm,  
dy=8mm, dz=5mm

Reference Value = 43.6 V/m; Power Drift = -0.059 dB

Peak SAR (extrapolated) = 2.15 W/kg

**SAR(1 g) = 1.66 mW/g; SAR(10 g) = 1.26 mW/g**

Maximum value of SAR (measured) = 1.73 mW/g

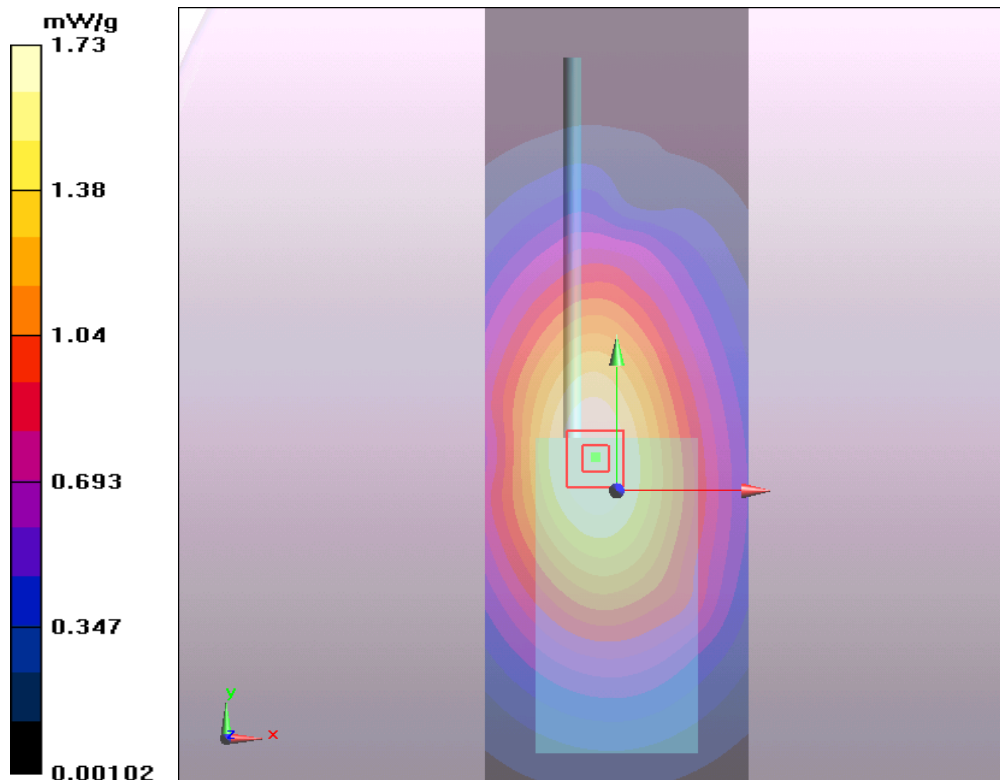


Figure 10 Face Held, Front towards Phantom 467.725 MHz

**Body-Worn, Front towards Ground 462.625 MHz(12.5 KHz Channel Spacing)**

Date/Time: 6/25/2012 11:10:23 AM

Communication System: PTT 450; Frequency: 462.625 MHz;Duty Cycle: 1:1

Medium parameters used:  $f = 463$  MHz;  $\sigma = 0.982$  mho/m;  $\epsilon_r = 55.4$ ;  $\rho = 1000$  kg/m<sup>3</sup>

Ambient Temperature:22.3 °C      Liquid Temperature: 21.5°C

Phantom section: Flat Section

DASY5 Configuration:

Probe: EX3DV4 - SN3816; ConvF(10.83, 10.83, 10.83); Calibrated: 10/3/2011

Electronics: DAE4 Sn1291; Calibrated: 10/10/2011

Phantom: ELI 4.0; Type: QDOVA001BA;

Measurement SW: DASY5, V5.2 Build 162; SEMCAD X Version 14.0 Build 59

**Towards Ground 462.625 MHz/Area Scan (51x161x1):** Measurement grid: dx=20mm, dy=20mm

Maximum value of SAR (interpolated) = 2.84 mW/g

**Towards Ground 462.625 MHz/Zoom Scan (5x5x7)/Cube 0:** Measurement grid: dx=8mm,

dy=8mm, dz=5mm

Reference Value = 51.6 V/m; Power Drift = -0.014 dB

Peak SAR (extrapolated) = 3.65 W/kg

**SAR(1 g) = 2.64 mW/g; SAR(10 g) = 1.9 mW/g**

Maximum value of SAR (measured) = 2.78 mW/g

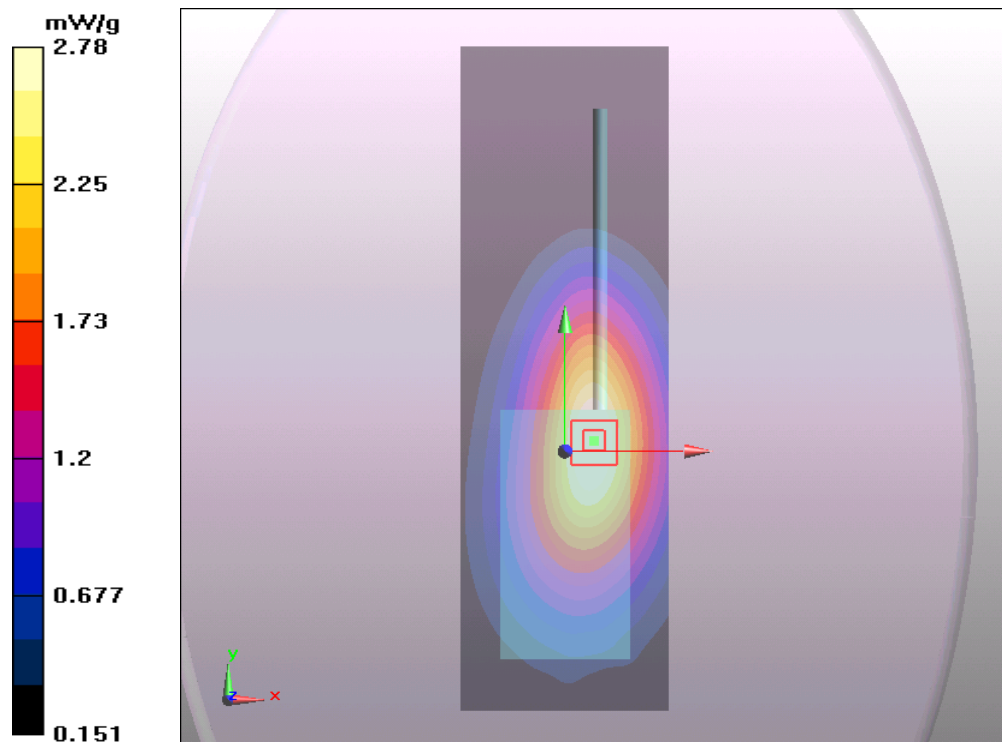


Figure 11 Body-Worn, Front towards Ground 462.625 MHz

**Body-Worn, Front towards Ground 467.725 MHz(12.5 KHz Channel Spacing)**

Date/Time: 6/25/2012 11:32:44 AM

Communication System: PTT 450; Frequency: 467.725 MHz;Duty Cycle: 1:1

Medium parameters used:  $f = 468$  MHz;  $\sigma = 0.987$  mho/m;  $\epsilon_r = 55.3$ ;  $\rho = 1000$  kg/m<sup>3</sup>

Ambient Temperature:22.3 °C      Liquid Temperature: 21.5°C

Phantom section: Flat Section

DASY5 Configuration:

Probe: EX3DV4 - SN3816; ConvF(10.83, 10.83, 10.83); Calibrated: 10/3/2011

Electronics: DAE4 Sn1291; Calibrated: 10/10/2011

Phantom: ELI 4.0; Type: QDOVA001BA;

Measurement SW: DASY5, V5.2 Build 162; SEMCAD X Version 14.0 Build 59

**Towards Ground 467.725 MHz/Area Scan (51x161x1):** Measurement grid: dx=20mm, dy=20mm

Maximum value of SAR (interpolated) = 2.62 mW/g

**Towards Ground 467.725 MHz/Zoom Scan (5x5x7)/Cube 0:** Measurement grid: dx=8mm,

dy=8mm, dz=5mm

Reference Value = 48.3 V/m; Power Drift = -0.041 dB

Peak SAR (extrapolated) = 3.05 W/kg

**SAR(1 g) = 2.42 mW/g; SAR(10 g) = 1.66 mW/g**

Maximum value of SAR (measured) = 2.58 mW/g

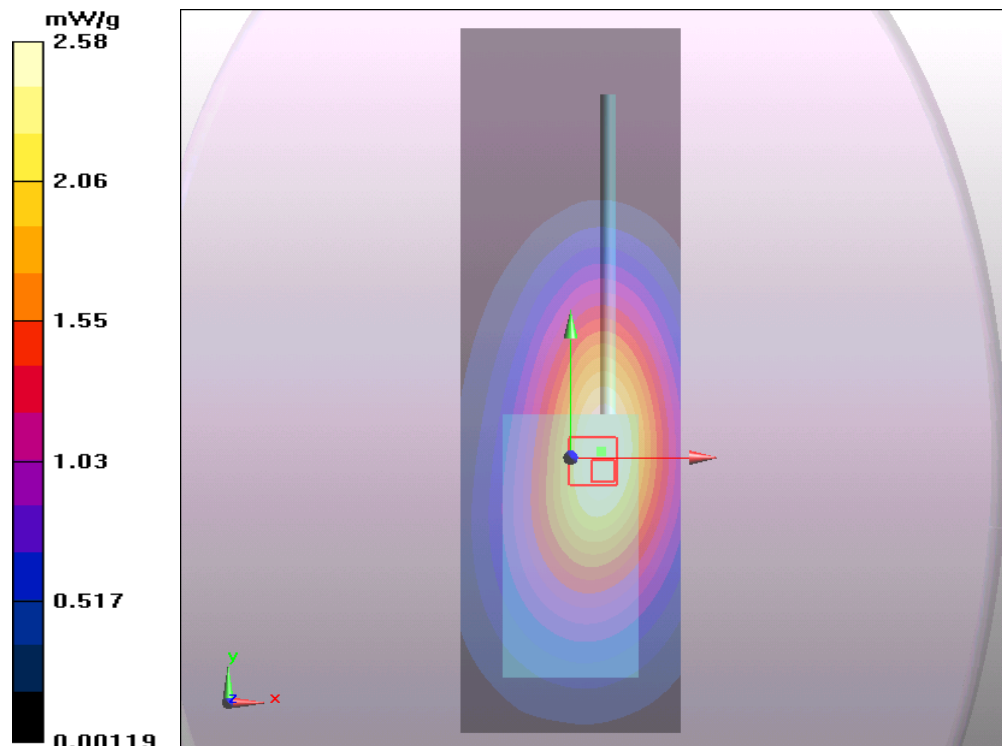


Figure 12 Body-Worn, Front towards Ground 467.725 MHz

**Body-Worn with Earphone, Front towards Ground 462.625 MHz(12.5 KHz Channel Spacing)**

Date/Time: 6/25/2012 1:07:56 PM

Communication System: PTT 450; Frequency: 462.625 MHz; Duty Cycle: 1:1

Medium parameters used:  $f = 463$  MHz;  $\sigma = 0.982$  mho/m;  $\epsilon_r = 55.4$ ;  $\rho = 1000$  kg/m<sup>3</sup>

Ambient Temperature: 22.3 °C      Liquid Temperature: 21.5 °C

Phantom section: Flat Section

DASY5 Configuration:

Probe: EX3DV4 - SN3816; ConvF(10.83, 10.83, 10.83); Calibrated: 10/3/2011

Electronics: DAE4 Sn1291; Calibrated: 10/10/2011

Phantom: ELI 4.0; Type: QDOVA001BA;

Measurement SW: DASY5, V5.2 Build 162; SEMCAD X Version 14.0 Build 59

**Towards Ground 462.625 MHz/Area Scan (51x161x1):** Measurement grid: dx=20mm, dy=20mm  
Maximum value of SAR (interpolated) = 3.11 mW/g

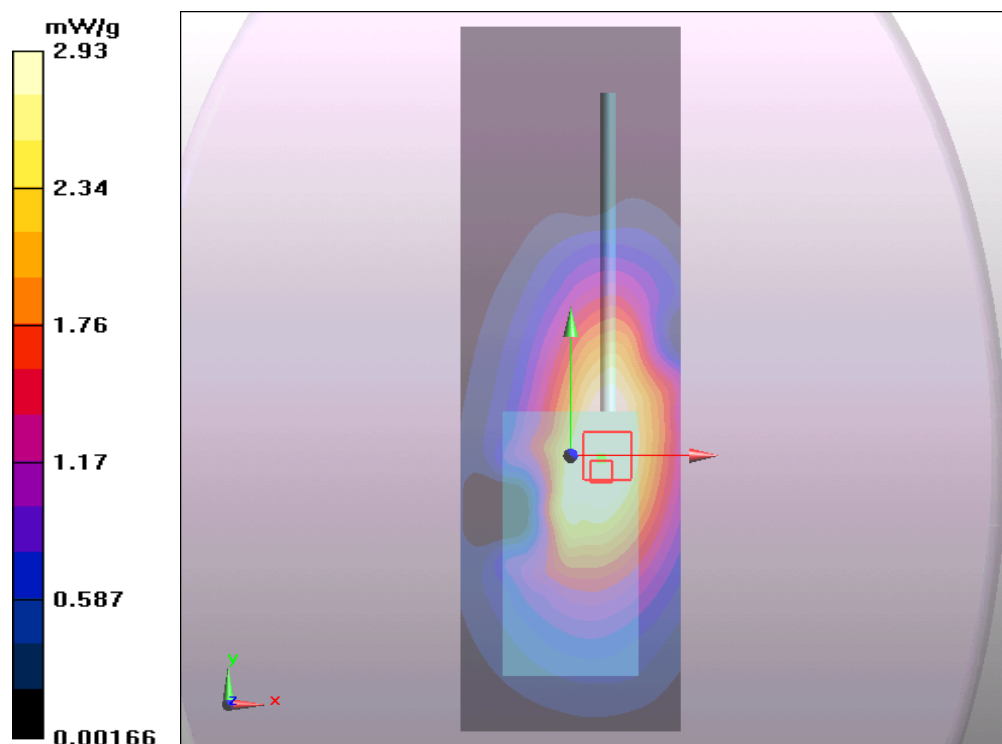
**Towards Ground 462.625 MHz/Zoom Scan (5x5x7)/Cube 0:** Measurement grid: dx=8mm, dy=8mm, dz=5mm

Reference Value = 51.2 V/m; Power Drift = -0.072 dB

Peak SAR (extrapolated) = 3.82 W/kg

**SAR(1 g) = 2.74 mW/g; SAR(10 g) = 1.96 mW/g**

Maximum value of SAR (measured) = 2.93 mW/g



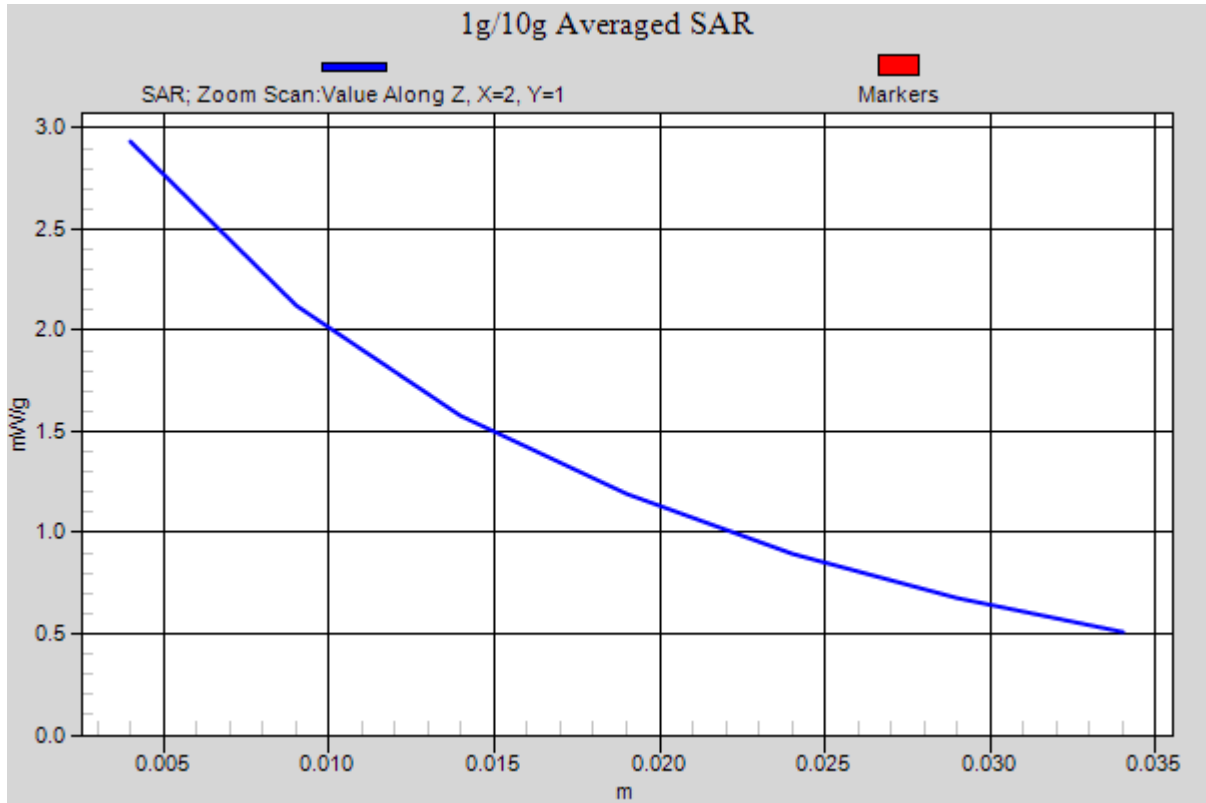


Figure 13 Body-Worn with Earphone, Front towards Ground 462.625 MHz

# TA Technology (Shanghai) Co., Ltd. Test Report

Report No. RXA1206-0413SAR

Page 39 of 69

## ANNEX D: Probe Calibration Certificate

**Calibration Laboratory of  
Schmid & Partner  
Engineering AG**  
Zeughausstrasse 43, 8004 Zurich, Switzerland



**S** Schweizerischer Kalibrierdienst  
**C** Service suisse d'étalonnage  
**S** Servizio svizzero di taratura  
**S** Swiss Calibration Service

Accredited by the Swiss Accreditation Service (SAS)  
The Swiss Accreditation Service is one of the signatories to the EA  
Multilateral Agreement for the recognition of calibration certificates

Accreditation No.: **SCS 108**

Client **TMC Shanghai (Auden)**

Certificate No: **EX3-3816\_Oct11**

### CALIBRATION CERTIFICATE

Object **EX3DV4 - SN:3816**

Calibration procedure(s) **QA CAL-01.v8, QA CAL-12.v7, QA CAL-23.v4, QA CAL-25.v4  
Calibration procedure for dosimetric E-field probes**

Calibration date: **October 3, 2011**

This calibration certificate documents the traceability to national standards, which realize the physical units of measurements (SI).  
The measurements and the uncertainties with confidence probability are given on the following pages and are part of the certificate.

All calibrations have been conducted in the closed laboratory facility: environment temperature (22 ± 3)°C and humidity < 70%.

Calibration Equipment used (M&TE critical for calibration)

Primary Standards	ID	Cal Date (Certificate No.)	Scheduled Calibration
Power meter E4419B	GB41293874	31-Mar-11 (No. 217-01372)	Apr-12
Power sensor E4412A	MY41498087	31-Mar-11 (No. 217-01372)	Apr-12
Reference 3 dB Attenuator	SN: S5054 (3c)	29-Mar-11 (No. 217-01389)	Apr-12
Reference 20 dB Attenuator	SN: S5086 (20b)	29-Mar-11 (No. 217-01367)	Apr-12
Reference 30 dB Attenuator	SN: S5129 (30b)	29-Mar-11 (No. 217-01370)	Apr-12
Reference Probe ES3DV2	SN: 3013	29-Dec-10 (No. ES3-3013_Dec10)	Dec-11
DAE4	SN: 654	3-May-11 (No. DAE4-654_May11)	May-12
Secondary Standards	ID	Check Date (in house)	Scheduled Check
RF generator HP 8648C	US3642U01700	4-Aug-99 (in house check Oct-09)	In house check: Oct-11
Network Analyzer HP 8753E	US37390585	18-Oct-01 (in house check Oct-10)	In house check: Oct-11

Calibrated by:	Name <b>Jeton Kastrati</b>	Function <b>Laboratory Technician</b>	Signature 
Approved by:	Name <b>Katja Pokovic</b>	Function <b>Technical Manager</b>	Signature 

Issued: October 3, 2011

This calibration certificate shall not be reproduced except in full without written approval of the laboratory.

# TA Technology (Shanghai) Co., Ltd.

## Test Report

Report No. RXA1206-0413SAR

Page 40 of 69

**Calibration Laboratory of  
Schmid & Partner  
Engineering AG**  
Zeughausstrasse 43, 8004 Zurich, Switzerland



**S** Schweizerischer Kalibrierdienst  
**C** Service suisse d'étalonnage  
**S** Servizio svizzero di taratura  
**S** Swiss Calibration Service

Accredited by the Swiss Accreditation Service (SAS)

Accreditation No.: **SCS 108**

The Swiss Accreditation Service is one of the signatories to the EA  
Multilateral Agreement for the recognition of calibration certificates

### Glossary:

TSL	tissue simulating liquid
NORM <sub>x,y,z</sub>	sensitivity in free space
ConvF	sensitivity in TSL / NORM <sub>x,y,z</sub>
DCP	diode compression point
CF	crest factor (1/duty_cycle) of the RF signal
A, B, C	modulation dependent linearization parameters
Polarization $\varphi$	$\varphi$ rotation around probe axis
Polarization $\vartheta$	$\vartheta$ rotation around an axis that is in the plane normal to probe axis (at measurement center), i.e., $\vartheta = 0$ is normal to probe axis

### Calibration is Performed According to the Following Standards:

- IEEE Std 1528-2003, "IEEE Recommended Practice for Determining the Peak Spatial-Averaged Specific Absorption Rate (SAR) in the Human Head from Wireless Communications Devices: Measurement Techniques", December 2003
- IEC 62209-1, "Procedure to measure the Specific Absorption Rate (SAR) for hand-held devices used in close proximity to the ear (frequency range of 300 MHz to 3 GHz)", February 2005

### Methods Applied and Interpretation of Parameters:

- NORM<sub>x,y,z</sub>**: Assessed for E-field polarization  $\vartheta = 0$  ( $f \leq 900$  MHz in TEM-cell;  $f > 1800$  MHz: R22 waveguide). NORM<sub>x,y,z</sub> are only intermediate values, i.e., the uncertainties of NORM<sub>x,y,z</sub> does not affect the E<sup>2</sup>-field uncertainty inside TSL (see below ConvF).
- NORM(f)<sub>x,y,z</sub>** = NORM<sub>x,y,z</sub> \* frequency\_response (see Frequency Response Chart). This linearization is implemented in DASY4 software versions later than 4.2. The uncertainty of the frequency response is included in the stated uncertainty of ConvF.
- DCP<sub>x,y,z</sub>**: DCP are numerical linearization parameters assessed based on the data of power sweep with CW signal (no uncertainty required). DCP does not depend on frequency nor media.
- PAR**: PAR is the Peak to Average Ratio that is not calibrated but determined based on the signal characteristics
- A<sub>x,y,z</sub>; B<sub>x,y,z</sub>; C<sub>x,y,z</sub>; VR<sub>x,y,z</sub>**: A, B, C are numerical linearization parameters assessed based on the data of power sweep for specific modulation signal. The parameters do not depend on frequency nor media. VR is the maximum calibration range expressed in RMS voltage across the diode.
- ConvF and Boundary Effect Parameters**: Assessed in flat phantom using E-field (or Temperature Transfer Standard for  $f \leq 800$  MHz) and inside waveguide using analytical field distributions based on power measurements for  $f > 800$  MHz. The same setups are used for assessment of the parameters applied for boundary compensation (alpha, depth) of which typical uncertainty values are given. These parameters are used in DASY4 software to improve probe accuracy close to the boundary. The sensitivity in TSL corresponds to NORM<sub>x,y,z</sub> \* ConvF whereby the uncertainty corresponds to that given for ConvF. A frequency dependent ConvF is used in DASY version 4.4 and higher which allows extending the validity from  $\pm 50$  MHz to  $\pm 100$  MHz.
- Spherical isotropy (3D deviation from isotropy)**: in a field of low gradients realized using a flat phantom exposed by a patch antenna.
- Sensor Offset**: The sensor offset corresponds to the offset of virtual measurement center from the probe tip (on probe axis). No tolerance required.



EX3DV4 – SN:3816

October 3, 2011

# Probe EX3DV4

## SN:3816

Manufactured: September 2, 2011  
Calibrated: October 3, 2011

Calibrated for DASY/EASY Systems  
(Note: non-compatible with DASY2 system!)

# TA Technology (Shanghai) Co., Ltd.

## Test Report

EX3DV4- SN:3816

October 3, 2011

### DASY/EASY - Parameters of Probe: EX3DV4 - SN:3816

#### Basic Calibration Parameters

	Sensor X	Sensor Y	Sensor Z	Unc (k=2)
Norm ( $\mu\text{V}/(\text{V}/\text{m})^{\text{E}^{\text{A}}}$ )	0.48	0.56	0.61	$\pm 10.1 \%$
DCP (mV) <sup>B</sup>	99.8	102.2	102.1	

#### Modulation Calibration Parameters

UID	Communication System Name	PAR		A dB	B dB	C dB	VR mV	Unc <sup>E</sup> (k=2)
10000	CW	0.00	X	0.00	0.00	1.00	111.3	$\pm 2.7 \%$
			Y	0.00	0.00	1.00	127.3	
			Z	0.00	0.00	1.00	127.7	

The reported uncertainty of measurement is stated as the standard uncertainty of measurement multiplied by the coverage factor k=2, which for a normal distribution corresponds to a coverage probability of approximately 95%.

<sup>A</sup> The uncertainties of NormX,Y,Z do not affect the E<sup>2</sup>-field uncertainty inside TSL (see Pages 5 and 6).

<sup>B</sup> Numerical linearization parameter: uncertainty not required.

<sup>E</sup> Uncertainty is determined using the max. deviation from linear response applying rectangular distribution and is expressed for the square of the field value.

# TA Technology (Shanghai) Co., Ltd.

## Test Report

EX3DV4- SN:3816

October 3, 2011

### DASY/EASY - Parameters of Probe: EX3DV4 - SN:3816

#### Calibration Parameter Determined in Head Tissue Simulating Media

f (MHz) <sup>c</sup>	Relative Permittivity <sup>f</sup>	Conductivity (S/m) <sup>f</sup>	ConvF X	ConvF Y	ConvF Z	Alpha	Depth (mm)	Unct. (k=2)
450	43.5	0.87	9.97	9.97	9.97	0.11	1.00	± 13.4 %
750	41.9	0.89	9.47	9.47	9.47	0.62	0.78	± 12.0 %
835	41.5	0.90	9.22	9.22	9.22	0.76	0.66	± 12.0 %
1450	40.5	1.20	8.58	8.58	8.58	0.65	0.77	± 12.0 %
1750	40.1	1.37	8.23	8.23	8.23	0.80	0.58	± 12.0 %
1900	40.0	1.40	7.90	7.90	7.90	0.80	0.57	± 12.0 %
2450	39.2	1.80	7.17	7.17	7.17	0.66	0.64	± 12.0 %
2600	39.0	1.96	7.06	7.06	7.06	0.64	0.67	± 12.0 %

<sup>c</sup> Frequency validity of ± 100 MHz only applies for DASY v4.4 and higher (see Page 2), else it is restricted to ± 50 MHz. The uncertainty is the RSS of the ConvF uncertainty at calibration frequency and the uncertainty for the indicated frequency band.

<sup>f</sup> At frequencies below 3 GHz, the validity of tissue parameters ( $\epsilon$  and  $\sigma$ ) can be relaxed to ± 10% if liquid compensation formula is applied to measured SAR values. At frequencies above 3 GHz, the validity of tissue parameters ( $\epsilon$  and  $\sigma$ ) is restricted to ± 5%. The uncertainty is the RSS of the ConvF uncertainty for indicated target tissue parameters.

EX3DV4- SN:3816

October 3, 2011

## DASY/EASY - Parameters of Probe: EX3DV4 - SN:3816

### Calibration Parameter Determined in Body Tissue Simulating Media

f (MHz) <sup>C</sup>	Relative Permittivity <sup>F</sup>	Conductivity (S/m) <sup>F</sup>	ConvF X	ConvF Y	ConvF Z	Alpha	Depth (mm)	Unct. (k=2)
450	56.7	0.94	10.83	10.83	10.83	0.02	1.00	± 13.4 %
750	55.5	0.96	9.50	9.50	9.50	0.80	0.70	± 12.0 %
835	55.2	0.97	9.38	9.38	9.38	0.68	0.69	± 12.0 %
1750	53.4	1.49	7.80	7.80	7.80	0.80	0.65	± 12.0 %
1900	53.3	1.52	7.51	7.51	7.51	0.80	0.65	± 12.0 %
2450	52.7	1.95	7.19	7.19	7.19	0.80	0.60	± 12.0 %
2600	52.5	2.16	7.14	7.14	7.14	0.80	0.59	± 12.0 %

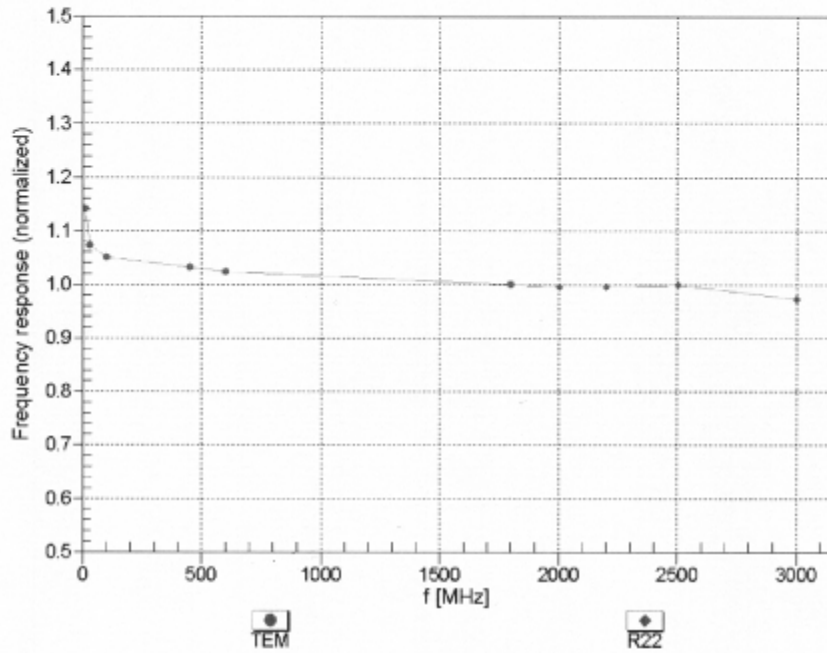
<sup>C</sup> Frequency validity of ± 100 MHz only applies for DASY v4.4 and higher (see Page 2), else it is restricted to ± 50 MHz. The uncertainty is the RSS of the ConvF uncertainty at calibration frequency and the uncertainty for the indicated frequency band.

<sup>F</sup> At frequencies below 3 GHz, the validity of tissue parameters ( $\epsilon$  and  $\sigma$ ) can be relaxed to ± 10% if liquid compensation formula is applied to measured SAR values. At frequencies above 3 GHz, the validity of tissue parameters ( $\epsilon$  and  $\sigma$ ) is restricted to ± 5%. The uncertainty is the RSS of the ConvF uncertainty for indicated target tissue parameters.

EX3DV4- SN:3816

October 3, 2011

### Frequency Response of E-Field (TEM-Cell: ifi110 EXX, Waveguide: R22)



Uncertainty of Frequency Response of E-field:  $\pm 6.3\%$  ( $k=2$ )

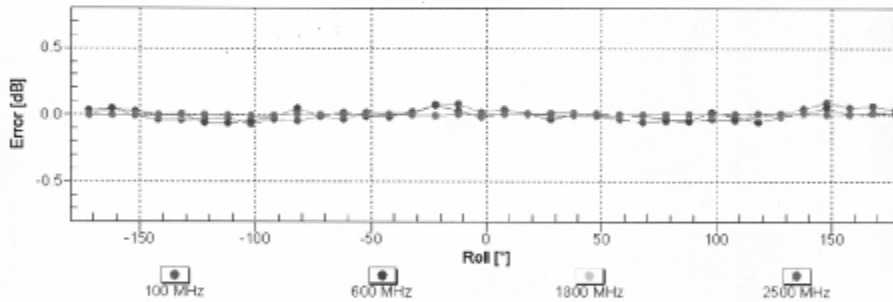
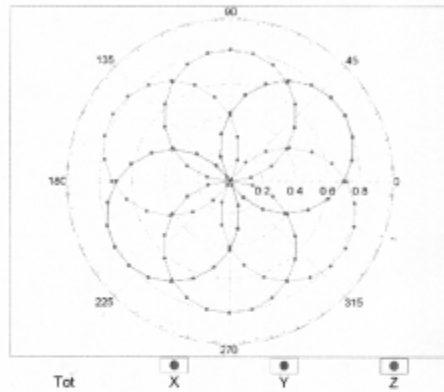
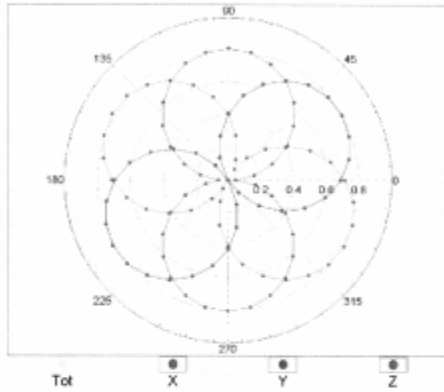
EX3DV4-SN:3816

October 3, 2011

Receiving Pattern ( $\phi$ ),  $\theta = 0^\circ$

f=600 MHz,TEM

f=1800 MHz,R22

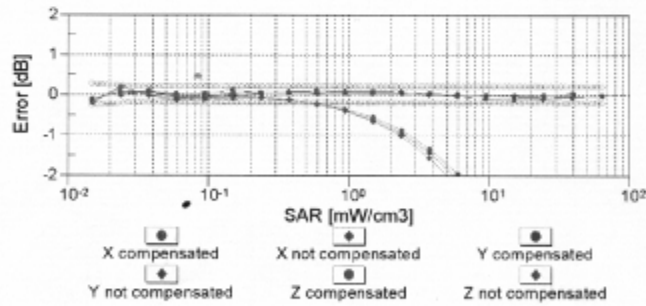
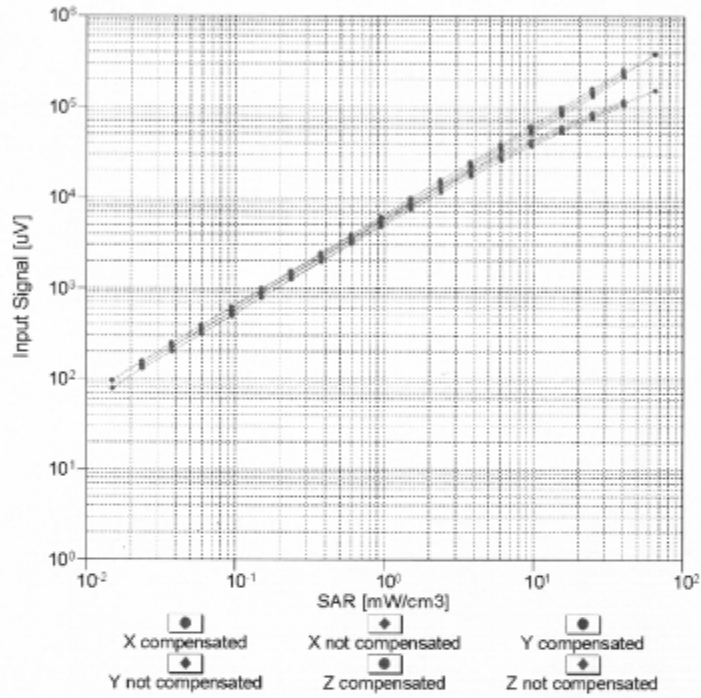


Uncertainty of Axial Isotropy Assessment:  $\pm 0.5\%$  (k=2)

EX3DV4- SN:3816

October 3, 2011

**Dynamic Range f(SAR<sub>head</sub>)**  
 (TEM cell , f = 900 MHz)

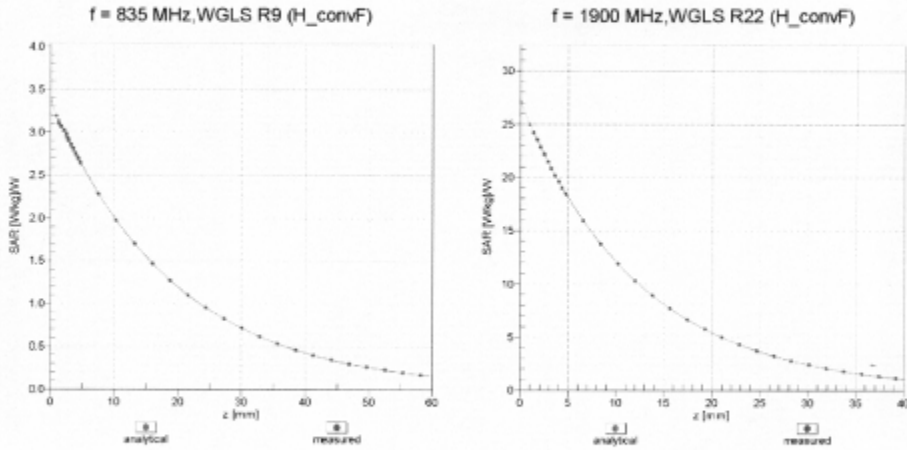


Uncertainty of Linearity Assessment: ± 0.6% (k=2)

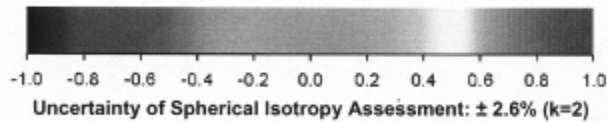
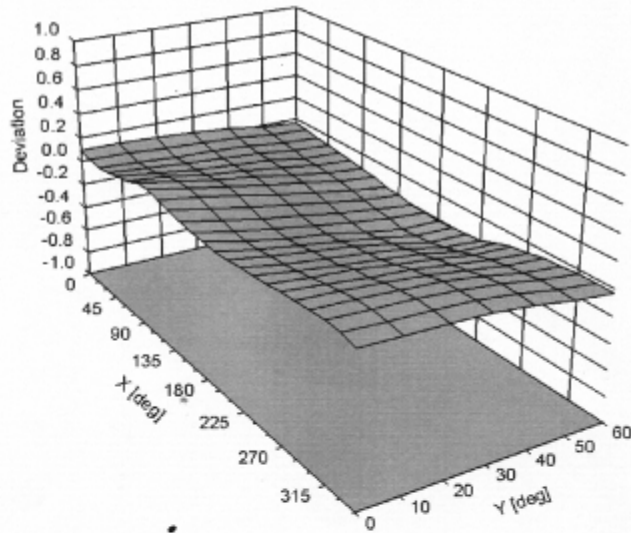
EX3DV4- SN:3816

October 3, 2011

### Conversion Factor Assessment



### Deviation from Isotropy in Liquid Error ( $\phi$ , $\theta$ ), f = 900 MHz





EX3DV4- SN:3816

October 3, 2011

### DASY/EASY - Parameters of Probe: EX3DV4 - SN:3816

#### Other Probe Parameters

Sensor Arrangement	Triangular
Connector Angle (°)	Not applicable
Mechanical Surface Detection Mode	enabled
Optical Surface Detection Mode	disabled
Probe Overall Length	337 mm
Probe Body Diameter	10 mm
Tip Length	9 mm
Tip Diameter	2.5 mm
Probe Tip to Sensor X Calibration Point	1 mm
Probe Tip to Sensor Y Calibration Point	1 mm
Probe Tip to Sensor Z Calibration Point	1 mm
Recommended Measurement Distance from Surface	2 mm

# TA Technology (Shanghai) Co., Ltd. Test Report

Report No. RXA1206-0413SAR

Page 50 of 69

## ANNEX E: D450V3 Dipole Calibration Certificate

**Calibration Laboratory of  
Schmid & Partner  
Engineering AG**  
Zeughausstrasse 43, 8004 Zurich, Switzerland



**S** Schweizerischer Kalibrierdienst  
**C** Service suisse d'étalonnage  
**S** Servizio svizzero di taratura  
**S** Swiss Calibration Service

Accredited by the Swiss Accreditation Service (SAS)  
The Swiss Accreditation Service is one of the signatories to the EA  
Multilateral Agreement for the recognition of calibration certificates

Accreditation No.: **SCS 108**

Client **TA (Auden)**

Certificate No: **D450V3-1065\_Nov10**

<b>CALIBRATION CERTIFICATE</b>			
Object	D450V3 - SN: 1065		
Calibration procedure(s)	QA CAL-15.v5 Calibration Procedure for dipole validation kits below 800 MHz		
Calibration date:	November 09, 2010		
<p>This calibration certificate documents the traceability to national standards, which realize the physical units of measurements (SI). The measurements and the uncertainties with confidence probability are given on the following pages and are part of the certificate.</p> <p>All calibrations have been conducted in the closed laboratory facility: environment temperature (22 ± 3)°C and humidity &lt; 70%.</p>			
Calibration Equipment used (M&TE critical for calibration)			
Primary Standards	ID #	Cal Date (Calibrated by, Certificate No.)	Scheduled Calibration
Power meter E4419B	GB41293874	1-Apr-10 (No. 217-01030)	Apr-11
Power sensor E4412A	MY41495277	1-Apr-10 (No. 217-01030)	Apr-11
Power sensor E4412A	MY41498087	1-Apr-10 (No. 217-01030)	Apr-11
Reference 3 dB Attenuator	SN: S5054 (3c)	31-Mar-10 (No. 217-01026)	Mar-11
Reference 20 dB Attenuator	SN: S5086 (20b)	31-Mar-10 (No. 217-01028)	Mar-11
Type-N mismatch combination	SN: 5047.2 / 06327	31-Mar-10 (No. 217-01029)	Mar-11
Reference Probe ET3DV6 (LF)	SN: 1507	03-Jul-10 (No. ET3-1507_Jul10)	Jul-11
DAE4	SN: 654	04-May-10 (No. DAE4-654_May10)	May-11
Secondary Standards	ID #	Check Date (in house)	Scheduled Check
RF generator HP 8648C	US3642U01700	04-Aug-99 (in house check Oct-10)	In house check: Oct-11
Network Analyzer HP 8753E	US37390585 S4206	18-Oct-01 (in house check Oct-10)	In house check: Oct-11
Calibrated by:	Name Jeton Kastrati	Function Laboratory Technician	Signature 
Approved by:	Name Katja Pokovic	Function Technical Manager	Signature 
Issued: November 9, 2010			
This calibration certificate shall not be reproduced except in full without written approval of the laboratory.			

# TA Technology (Shanghai) Co., Ltd.

## Test Report

Report No. RXA1206-0413SAR

Page 51 of 69

**Calibration Laboratory of**  
Schmid & Partner  
Engineering AG  
Zeughausstrasse 43, 8004 Zurich, Switzerland



**S** Schweizerischer Kalibrierdienst  
**C** Service suisse d'étalonnage  
**S** Servizio svizzero di taratura  
**S** Swiss Calibration Service

Accredited by the Swiss Accreditation Service (SAS)  
The Swiss Accreditation Service is one of the signatories to the EA  
Multilateral Agreement for the recognition of calibration certificates

Accreditation No.: **SCS 108**

### Glossary:

TSL	tissue simulating liquid
ConF	sensitivity in TSL / NORM x,y,z
N/A	not applicable or not measured

### Calibration is Performed According to the Following Standards:

- IEEE Std 1528-2003, "IEEE Recommended Practice for Determining the Peak Spatial-Averaged Specific Absorption Rate (SAR) in the Human Head from Wireless Communications Devices: Measurement Techniques", December 2003
- IEC 62209-1, "Procedure to measure the Specific Absorption Rate (SAR) for hand-held devices used in close proximity to the ear (frequency range of 300 MHz to 3 GHz)", February 2005
- Federal Communications Commission Office of Engineering & Technology (FCC OET), "Evaluating Compliance with FCC Guidelines for Human Exposure to Radiofrequency Electromagnetic Fields; Additional Information for Evaluating Compliance of Mobile and Portable Devices with FCC Limits for Human Exposure to Radiofrequency Emissions", Supplement C (Edition 01-01) to Bulletin 65

### Additional Documentation:

- DASY4 System Handbook

### Methods Applied and Interpretation of Parameters:

- Measurement Conditions:** Further details are available from the Validation Report at the end of the certificate. All figures stated in the certificate are valid at the frequency indicated.
- Antenna Parameters with TSL:** The dipole is mounted with the spacer to position its feed point exactly below the center marking of the flat phantom section, with the arms oriented parallel to the body axis.
- Feed Point Impedance and Return Loss:** These parameters are measured with the dipole positioned under the liquid filled phantom. The impedance stated is transformed from the measurement at the SMA connector to the feed point. The Return Loss ensures low reflected power. No uncertainty required.
- Electrical Delay:** One-way delay between the SMA connector and the antenna feed point. No uncertainty required.
- SAR measured:** SAR measured at the stated antenna input power.
- SAR normalized:** SAR as measured, normalized to an input power of 1 W at the antenna connector.
- SAR for nominal TSL parameters:** The measured TSL parameters are used to calculate the nominal SAR result.

# TA Technology (Shanghai) Co., Ltd.

## Test Report

### Measurement Conditions

DASY system configuration, as far as not given on page 1.

<b>DASY Version</b>	DASY5	V5.2
<b>Extrapolation</b>	Advanced Extrapolation	
<b>Phantom</b>	ELI4 Flat Phantom	Shell thickness: $2 \pm 0.2$ mm
<b>Distance Dipole Center - TSL</b>	15 mm	with Spacer
<b>Area Scan Resolution</b>	dx, dy = 15 mm	
<b>Zoom Scan Resolution</b>	dx, dy, dz = 5 mm	
<b>Frequency</b>	450 MHz $\pm$ 1 MHz	

### Head TSL parameters

The following parameters and calculations were applied.

	Temperature	Permittivity	Conductivity
<b>Nominal Head TSL parameters</b>	22.0 °C	43.5	-0.87 mho/m
<b>Measured Head TSL parameters</b>	(22.0 $\pm$ 0.2) °C	44.2 $\pm$ 6 %	0.86 mho/m $\pm$ 6 %
<b>Head TSL temperature during test</b>	(22.0 $\pm$ 0.2) °C	---	---

### SAR result with Head TSL

<b>SAR averaged over 1 cm<sup>3</sup> (1 g) of Head TSL</b>	condition	
SAR measured	398 mW input power	1.87 mW / g
SAR normalized	normalized to 1W	4.70 mW / g
SAR for nominal Head TSL parameters	normalized to 1W	<b>4.76 mW / g <math>\pm</math> 18.1 % (k=2)</b>

<b>SAR averaged over 10 cm<sup>3</sup> (10 g) of Head TSL</b>	condition	
SAR measured	398 mW input power	1.25 mW / g
SAR normalized	normalized to 1W	3.14 mW / g
SAR for nominal Head TSL parameters	normalized to 1W	<b>3.17 mW / g <math>\pm</math> 17.6 % (k=2)</b>

**TA Technology (Shanghai) Co., Ltd.**  
**Test Report**

**Body TSL parameters**

The following parameters and calculations were applied.

	Temperature	Permittivity	Conductivity
<b>Nominal Body TSL parameters</b>	22.0 °C	56.7	0.94 mho/m
<b>Measured Body TSL parameters</b>	(22.0 ± 0.2) °C	54.1 ± 6 %	0.90 mho/m ± 6 %
<b>Body TSL temperature during test</b>	(22.0 ± 0.2) °C	----	----

**SAR result with Body TSL**

<b>SAR averaged over 1 cm<sup>3</sup> (1 g) of Body TSL</b>	condition	
SAR measured	398 mW input power	1.77 mW / g
SAR normalized	normalized to 1W	4.37 mW / g
SAR for nominal Body TSL parameters	normalized to 1W	<b>4.51 mW / g ± 18.1 % (k=2)</b>

<b>SAR averaged over 10 cm<sup>3</sup> (10 g) of Body TSL</b>	condition	
SAR measured	398 mW input power	1.18 mW / g
SAR normalized	normalized to 1W	2.94 mW / g
SAR for nominal Body TSL parameters	normalized to 1W	<b>3.03 mW / g ± 17.6 % (k=2)</b>

# TA Technology (Shanghai) Co., Ltd.

## Test Report

### Appendix

#### Antenna Parameters with Head TSL

Impedance, transformed to feed point	59.2 $\Omega$ - 4.9 j $\Omega$
Return Loss	- 20.5 dB

#### Antenna Parameters with Body TSL

Impedance, transformed to feed point	56.5 $\Omega$ - 7.9 j $\Omega$
Return Loss	- 20.4 dB

#### General Antenna Parameters and Design

Electrical Delay (one direction)	1.354 ns
----------------------------------	----------

After long term use with 100W radiated power, only a slight warming of the dipole near the feedpoint can be measured.

The dipole is made of standard semirigid coaxial cable. The center conductor of the feeding line is directly connected to the second arm of the dipole. The antenna is therefore short-circuited for DC-signals.

No excessive force must be applied to the dipole arms, because they might bend or the soldered connections near the feedpoint may be damaged.

#### Additional EUT Data

Manufactured by	SPEAG
Manufactured on	July 16, 2010

**DASY5 Validation Report for Head TSL**

Date/Time: 09.11.2010 10:36:58

Test Laboratory: The name of your organization

**DUT: Dipole 450 MHz; Type: D450V3; Serial: D450V3 - SN:1065**

Communication System: CW; Frequency: 450 MHz; Duty Cycle: 1:1

Medium: HSL450

Medium parameters used:  $f = 450$  MHz;  $\sigma = 0.86$  mho/m;  $\epsilon_r = 44.2$ ;  $\rho = 1000$  kg/m<sup>3</sup>

Phantom section: Flat Section

Measurement Standard: DASY5 (IEEE/IEC/ANSI C63.19-2007)

DASY5 Configuration:

- Probe: ET3DV6 - SN1507 (LF); ConvF(6.66, 6.66, 6.66); Calibrated: 03.07.2010
- Sensor-Surface: 4mm (Mechanical Surface Detection)
- Electronics: DAE4 Sn654; Calibrated: 04.05.2010
- Phantom: ELI 4.0; Type: QDOVA001BA; Serial: 1003
- Measurement SW: DASY5, V5.2 Build 157; SEMCAD X Version 14.0 Build 57

**Pin=398mW /d=15mm /Area Scan (41x111x1):** Measurement grid: dx=15mm, dy=15mm  
Maximum value of SAR (interpolated) = 1.99 mW/g

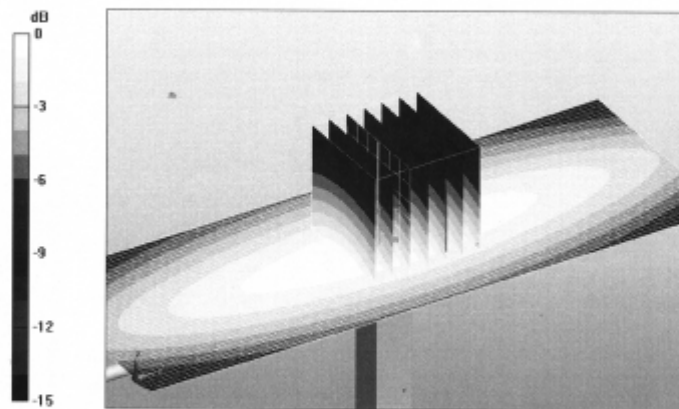
**Pin=398mW /d=15mm /Zoom Scan (7x7x7)/Cube 0:** Measurement grid: dx=5mm, dy=5mm, dz=5mm

Reference Value = 50.3 V/m; Power Drift = -0.00664 dB

Peak SAR (extrapolated) = 2.81 W/kg

**SAR(1 g) = 1.87 mW/g; SAR(10 g) = 1.25 mW/g**

Maximum value of SAR (measured) = 2.01 mW/g

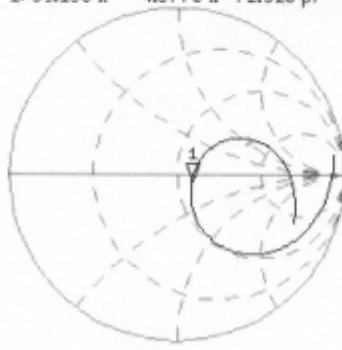


0 dB = 2.01mW/g

Impedance Measurement Plot for Head TSL

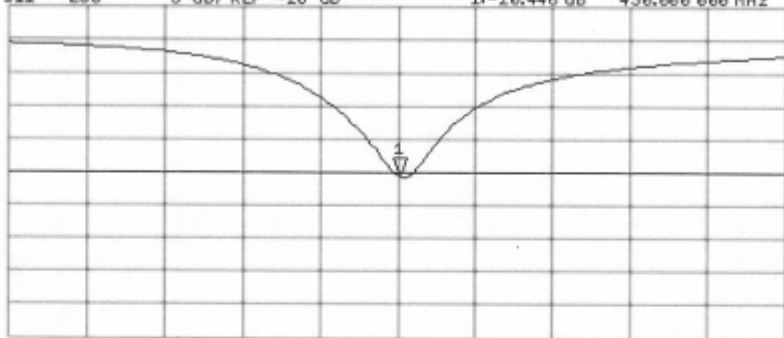
9 Nov 2010 10:19:27  
[CH1] S11 1 U FS 1: 59.156  $\Omega$  -4.8770  $\Omega$  72.520 pF 450.000 000 MHz

\*  
De1  
Cor  
Avg  
16



CH2 S11 L06 5 dB/REF -20 dB 1: -20.446 dB 450.000 000 MHz

Cor  
Avg  
16



START 250.000 000 MHz

STOP 650.000 000 MHz



**DASY5 Validation Report for Body TSL**

Date/Time: 09.11.2010 13:52:55

Test Laboratory: The name of your organization

**DUT: Dipole 450 MHz; Type: D450V3; Serial: D450V3 - SN:1065**

Communication System: CW; Frequency: 450 MHz; Duty Cycle: 1:1

Medium: MSL450

Medium parameters used:  $f = 450$  MHz;  $\sigma = 0.9$  mho/m;  $\epsilon_r = 54.1$ ;  $\rho = 1000$  kg/m<sup>3</sup>

Phantom section: Flat Section

Measurement Standard: DASY5 (IEEE/IEC/ANSI C63.19-2007)

DASY5 Configuration:

- Probe: ET3DV6 - SN1507 (LF); ConvF(7.11, 7.11, 7.11); Calibrated: 03.07.2010
- Sensor-Surface: 4mm (Mechanical Surface Detection)
- Electronics: DAE4 Sn654; Calibrated: 04.05.2010
- Phantom: ELI 4.0; Type: QDOVA001BA; Serial: 1003
- Measurement SW: DASY5, V5.2 Build 157; SEMCAD X Version 14.0 Build 57

**Pin=398mW /d=15mm /Area Scan (61x201x1):** Measurement grid: dx=10mm, dy=10mm  
Maximum value of SAR (interpolated) = 1.89 mW/g

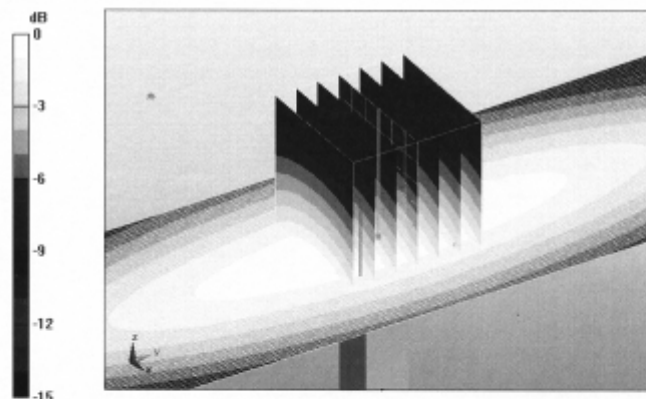
**Pin=398mW /d=15mm, /Zoom Scan (7x7x7)/Cube 0:** Measurement grid: dx=5mm, dy=5mm, dz=5mm

Reference Value = 47.4 V/m; Power Drift = -0.016 dB

Peak SAR (extrapolated) = 2.7 W/kg

**SAR(1 g) = 1.77 mW/g; SAR(10 g) = 1.18 mW/g**

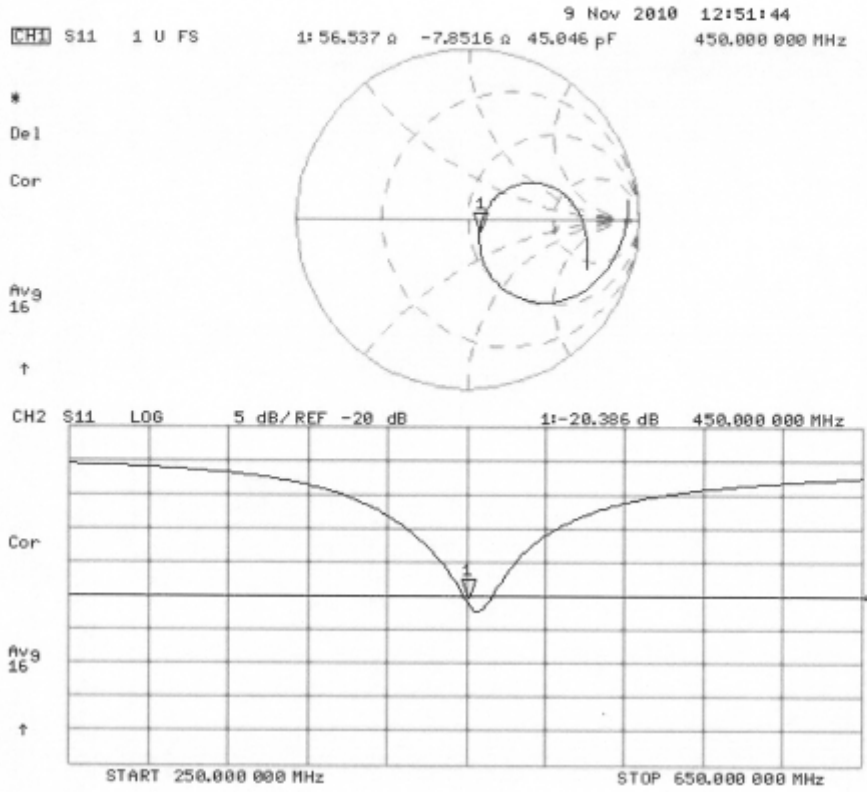
Maximum value of SAR (measured) = 1.89 mW/g



0 dB = 1.89mW/g

# TA Technology (Shanghai) Co., Ltd. Test Report

## Impedance Measurement Plot for Body TSL



# TA Technology (Shanghai) Co., Ltd.

## Test Report

### ANNEX F: DAE4 Calibration Certificate

**Calibration Laboratory of  
Schmid & Partner  
Engineering AG**  
Zeughausstrasse 43, 8004 Zurich, Switzerland



**S** Schweizerischer Kalibrierdienst  
**S** Service suisse d'étalonnage  
**C** Servizio svizzero di taratura  
**S** Swiss Calibration Service

Accredited by the Swiss Accreditation Service (SAS)  
The Swiss Accreditation Service is one of the signatories to the EA  
Multilateral Agreement for the recognition of calibration certificates

Accreditation No.: **SCS 108**

Client **TMC Shanghai (Auden)**

Certificate No: **DAE4-1291\_Oct11**

#### CALIBRATION CERTIFICATE

Object **DAE4 - SD 000 D04 BJ - SN: 1291**

Calibration procedure(s) **QA CAL-06.v23  
Calibration procedure for the data acquisition electronics (DAE)**

Calibration date: **October 10, 2011**

This calibration certificate documents the traceability to national standards, which realize the physical units of measurements (SI).  
The measurements and the uncertainties with confidence probability are given on the following pages and are part of the certificate.

All calibrations have been conducted in the closed laboratory facility: environment temperature (22 ± 3)°C and humidity < 70%.

Calibration Equipment used (M&TE critical for calibration)

Primary Standards	ID #	Cal Date (Certificate No.)	Scheduled Calibration
Keithley Multimeter Type 2001	SN: 0810278	28-Sep-11 (No:11450)	Sep-12
Secondary Standards	ID #	Check Date (In house)	Scheduled Check
Calibrator Box V1.1	SE UMS 006 AB 1004	08-Jun-11 (In house check)	In house check: Jun-12

Calibrated by:	Name <b>Andrea Guntli</b>	Function <b>Technician</b>	Signature 
Approved by:	Name <b>Fin Bomholt</b>	Function <b>R&amp;D Director</b>	

Issued: October 10, 2011

This calibration certificate shall not be reproduced except in full without written approval of the laboratory.

# TA Technology (Shanghai) Co., Ltd.

## Test Report

Report No. RXA1206-0413SAR

Page 60 of 69

**Calibration Laboratory of  
Schmid & Partner  
Engineering AG**  
Zeughausstrasse 43, 8004 Zurich, Switzerland



**S** Schweizerischer Kalibrierdienst  
**C** Service suisse d'étalonnage  
**S** Servizio svizzero di taratura  
**S** Swiss Calibration Service

Accredited by the Swiss Accreditation Service (SAS)

The Swiss Accreditation Service is one of the signatories to the EA  
Multilateral Agreement for the recognition of calibration certificates

Accreditation No.: **SCS 108**

### Glossary

DAE data acquisition electronics  
Connector angle information used in DASY system to align probe sensor X to the robot coordinate system.

### Methods Applied and Interpretation of Parameters

- *DC Voltage Measurement*: Calibration Factor assessed for use in DASY system by comparison with a calibrated instrument traceable to national standards. The figure given corresponds to the full scale range of the voltmeter in the respective range.
- *Connector angle*: The angle of the connector is assessed measuring the angle mechanically by a tool inserted. Uncertainty is not required.
- The following parameters as documented in the Appendix contain technical information as a result from the performance test and require no uncertainty.
  - *DC Voltage Measurement Linearity*: Verification of the Linearity at +10% and -10% of the nominal calibration voltage. Influence of offset voltage is included in this measurement.
  - *Common mode sensitivity*: Influence of a positive or negative common mode voltage on the differential measurement.
  - *Channel separation*: Influence of a voltage on the neighbor channels not subject to an input voltage.
  - *AD Converter Values with inputs shorted*: Values on the internal AD converter corresponding to zero input voltage
  - *Input Offset Measurement*: Output voltage and statistical results over a large number of zero voltage measurements.
  - *Input Offset Current*: Typical value for information; Maximum channel input offset current, not considering the input resistance.
  - *Input resistance*: Typical value for information: DAE input resistance at the connector, during internal auto-zeroing and during measurement.
  - *Low Battery Alarm Voltage*: Typical value for information. Below this voltage, a battery alarm signal is generated.
  - *Power consumption*: Typical value for information. Supply currents in various operating modes.

**TA Technology (Shanghai) Co., Ltd.**  
**Test Report**

**DC Voltage Measurement**

A/D - Converter Resolution nominal

High Range: 1LSB = 6.1 $\mu$ V , full range = -100...+300 mV

Low Range: 1LSB = 61nV , full range = -1.....+3mV

DASY measurement parameters: Auto Zero Time: 3 sec; Measuring time: 3 sec

Calibration Factors	X	Y	Z
High Range	402.618 $\pm$ 0.1% (k=2)	403.311 $\pm$ 0.1% (k=2)	403.219 $\pm$ 0.1% (k=2)
Low Range	3.97373 $\pm$ 0.7% (k=2)	3.93305 $\pm$ 0.7% (k=2)	3.99084 $\pm$ 0.7% (k=2)

**Connector Angle**

Connector Angle to be used in DASY system	309.0 $^{\circ}$ $\pm$ 1 $^{\circ}$
---	-------------------------------------

# TA Technology (Shanghai) Co., Ltd.

## Test Report

### Appendix

#### 1. DC Voltage Linearity

High Range		Reading ( $\mu\text{V}$ )	Difference ( $\mu\text{V}$ )	Error (%)
Channel X	+ Input	199992.4	-0.94	-0.00
Channel X	+ Input	20001.34	2.24	0.01
Channel X	- Input	-19997.31	2.39	-0.01
Channel Y	+ Input	199994.7	2.28	0.00
Channel Y	+ Input	20000.26	0.46	0.00
Channel Y	- Input	-19999.51	0.09	-0.00
Channel Z	+ Input	200005.6	-0.41	-0.00
Channel Z	+ Input	20000.09	0.09	0.00
Channel Z	- Input	-20000.54	-0.94	0.00

Low Range		Reading ( $\mu\text{V}$ )	Difference ( $\mu\text{V}$ )	Error (%)
Channel X	+ Input	2000.1	-0.04	-0.00
Channel X	+ Input	200.47	0.57	0.29
Channel X	- Input	-198.59	1.41	-0.70
Channel Y	+ Input	1999.8	-0.20	-0.01
Channel Y	+ Input	200.06	-0.04	-0.02
Channel Y	- Input	-200.07	-0.07	0.03
Channel Z	+ Input	2000.0	-0.04	-0.00
Channel Z	+ Input	199.87	-0.13	-0.07
Channel Z	- Input	-200.32	-0.12	0.06

#### 2. Common mode sensitivity

DASY measurement parameters: Auto Zero Time: 3 sec; Measuring time: 3 sec

	Common mode Input Voltage (mV)	High Range Average Reading ( $\mu\text{V}$ )	Low Range Average Reading ( $\mu\text{V}$ )
Channel X	200	9.31	7.38
	-200	-5.70	-7.73
Channel Y	200	13.16	13.22
	-200	-15.11	-15.12
Channel Z	200	-15.99	-16.16
	-200	14.64	14.71

#### 3. Channel separation

DASY measurement parameters: Auto Zero Time: 3 sec; Measuring time: 3 sec

	Input Voltage (mV)	Channel X ( $\mu\text{V}$ )	Channel Y ( $\mu\text{V}$ )	Channel Z ( $\mu\text{V}$ )
Channel X	200	-	3.83	-1.00
Channel Y	200	1.58	-	4.89
Channel Z	200	3.00	1.27	-

# TA Technology (Shanghai) Co., Ltd.

## Test Report

#### 4. AD-Converter Values with inputs shorted

DASY measurement parameters: Auto Zero Time: 3 sec; Measuring time: 3 sec

	High Range (LSB)	Low Range (LSB)
Channel X	16025	15514
Channel Y	15811	15983
Channel Z	16040	14624

#### 5. Input Offset Measurement

DASY measurement parameters: Auto Zero Time: 3 sec; Measuring time: 3 sec

Input 10MΩ

	Average (μV)	min. Offset (μV)	max. Offset (μV)	Std. Deviation (μV)
Channel X	-1.78	-3.14	0.35	0.47
Channel Y	-1.26	-4.20	-0.42	0.45
Channel Z	-1.77	-2.71	-0.62	0.37

#### 6. Input Offset Current

Nominal Input circuitry offset current on all channels: <25fA

#### 7. Input Resistance (Typical values for information)

	Zeroing (kOhm)	Measuring (MOhm)
Channel X	200	200
Channel Y	200	200
Channel Z	200	200

#### 8. Low Battery Alarm Voltage (Typical values for information)

Typical values	Alarm Level (VDC)
Supply (+ Vcc)	+7.9
Supply (- Vcc)	-7.6

#### 9. Power Consumption (Typical values for information)

Typical values	Switched off (mA)	Stand by (mA)	Transmitting (mA)
Supply (+ Vcc)	+0.01	+6	+14
Supply (- Vcc)	-0.01	-8	-9

**ANNEX G: The EUT Appearances and Test Configuration**



Picture 3-1: EUT



TA Technology (Shanghai) Co., Ltd.  
Test Report



Front



Back



Top



Bottom



Left



Right

Picture 3-2: Battery

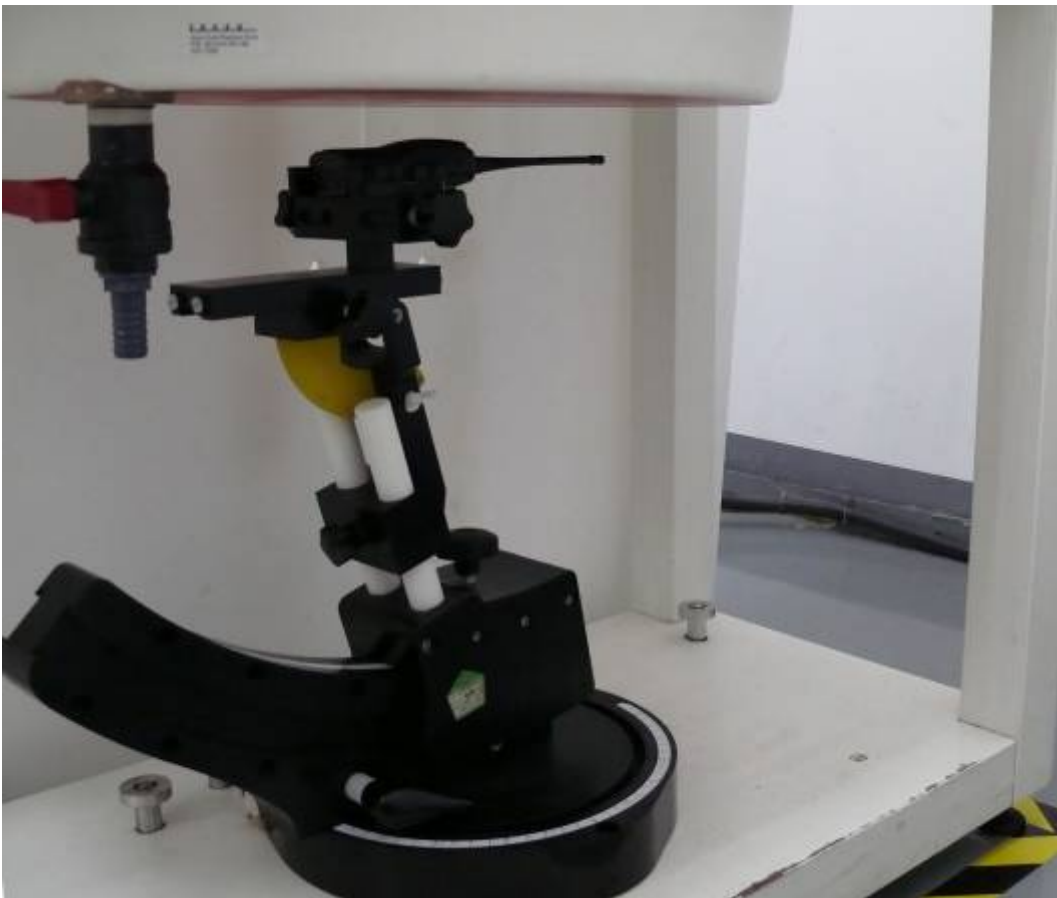


Picture 3-3: Belt



Picture 3-4: Earphone

Picture 3: Constituents of the sample



Picture 4: Face-held, The EUT display towards phantom, the distance from EUT Antenna to the bottom of the Phantom is 40mm



Picture 5: Body-worn, The EUT display towards ground, the belt directed tightly to touch the bottom of the flat phantom, the distance from EUT Antenna to the bottom of the Phantom is 27mm



Picture 6: Body-worn with Earphone, The EUT display towards ground, the belt directed tightly to touch the bottom of the flat phantom, the distance from EUT Antenna to the bottom of the Phantom is 27mm