

# VeriLock® Security Sensor Application

for Andersen® A-Series Frenchwood Gliding, 400 Series Frenchwood® Gliding, 200 Series Narroline® Gliding and 200 Series Perma-Shield® Gliding Patio Doors

## Thank you for choosing Andersen. /

For questions call 1-888-888-7020. For more information and/or guides visit [andersenwindows.com](http://andersenwindows.com).

**Please leave this guide with building owner.**

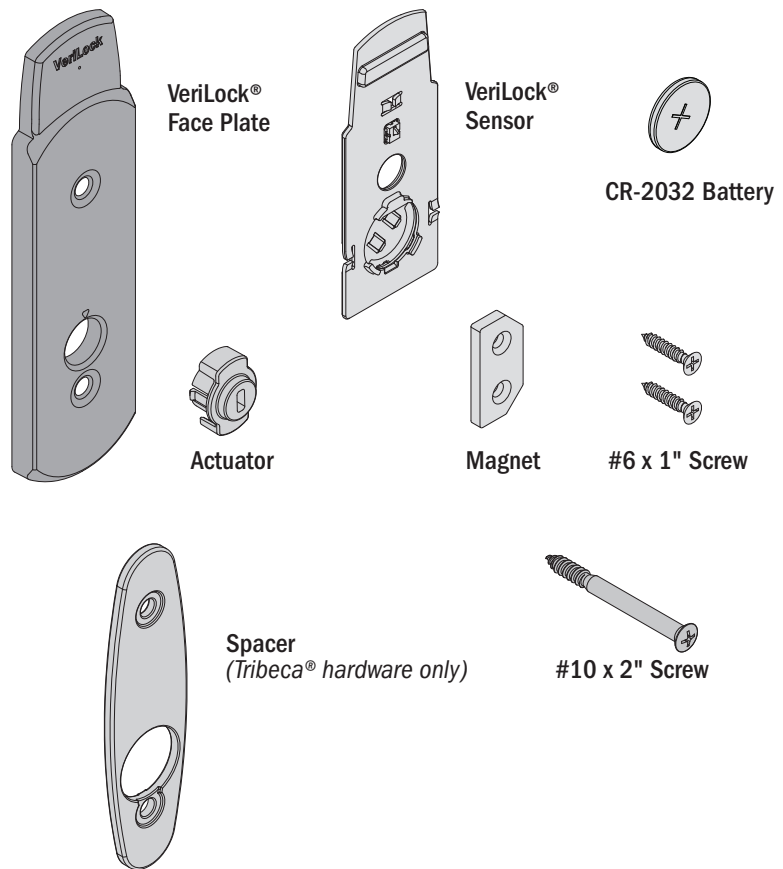
- ▶ **Read guide from beginning to end before starting installation. Read all warnings and cautions during unit installation.**
- ▶ **Check with your local building code official to identify and confirm compliance with local building code requirements.**

## Parts Included /

- (1) Instruction Guide /
- (4) VeriLock Face Plate /
- (1) VeriLock Sensor /
- (1) Actuator /
- (1) CR-2032 Battery /
- (1) Magnet /
- (2) #6 x 1" Screw /
- (12) #10 x 2" Screw /
- (2) Spacer (Tibeca® Hardware Only) /

## Tools Needed /

- Safety Glasses /
- Phillips Screwdriver /
- Drill/Driver /
- 1/8" Drill Bit /
- Drop Cloth /



Depending on individual installation requirements, some parts may not be used.

## ⚠ WARNING /

Use caution when working at elevated heights and around unit openings. Follow manufacturers' instructions for ladders and/or scaffolding. Failure to do so may result in injury or death.

## ⚠ WARNING /

Follow manufacturers' instructions for hand or power tools. Always wear safety glasses. Failure to do so may result in injury and/or product damage.

**⚠ WARNING /**

Batteries carry the risk of fire, explosion and burns. Do not recharge, disassemble, heat above 212 degrees F (100 degrees C) or incinerate. Dispose of used batteries promptly and properly. Keep away from children.

**⚠ WARNING /**

Magnetic field can be harmful to implanted medical device wearers. Keep magnets away from devices.

**⚠ WARNING /**

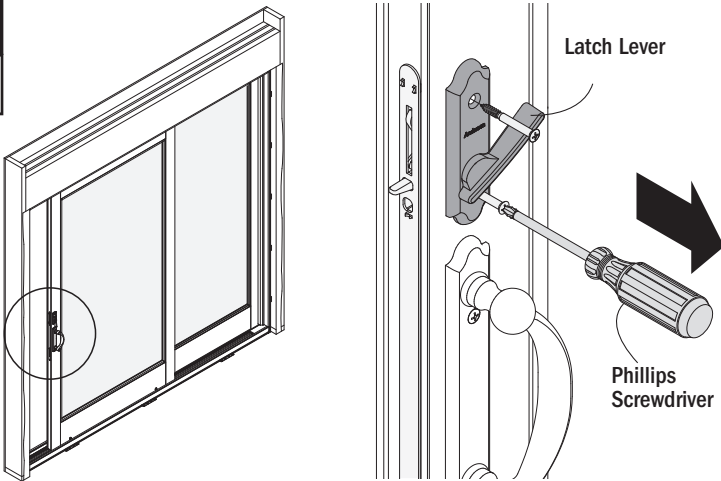
Batteries are small parts and, if swallowed, could pose a choking hazard to young children.

**⚠ WARNING /**

Magnets are small parts and, if swallowed, could pose a choking hazard to young children.

**1**

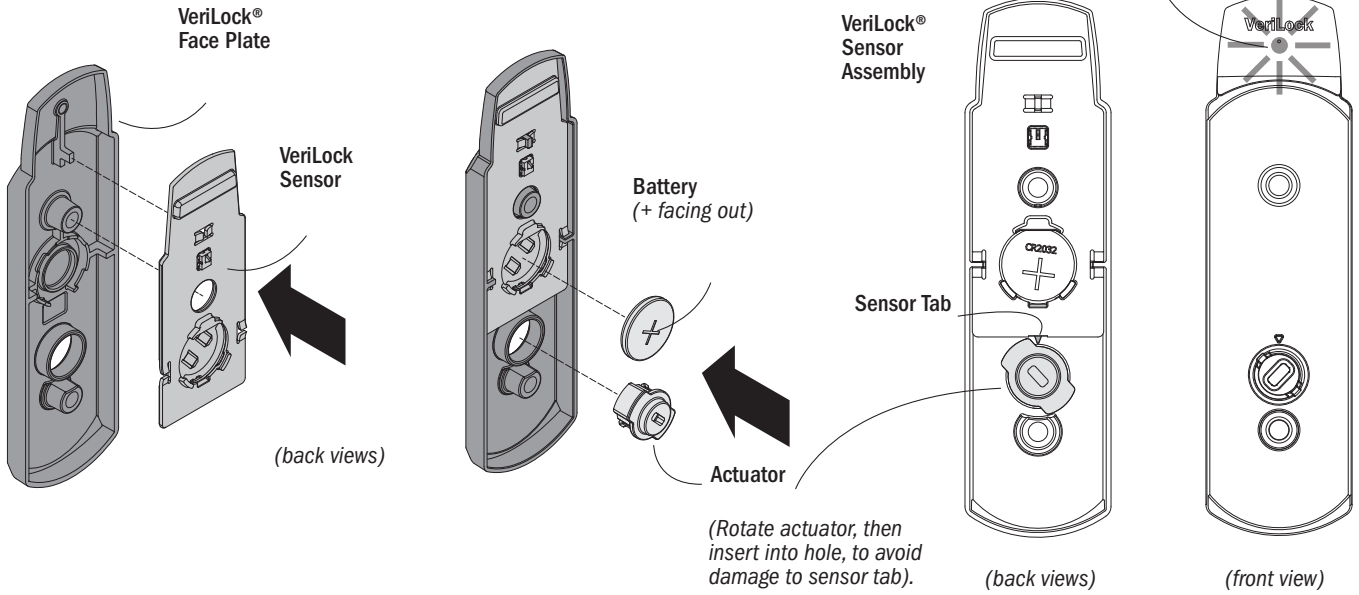
**Interior**



Lay a drop cloth down to prevent losing parts. Unlock and open door. Remove latch lever. Save latch lever for reuse and discard screws.

2

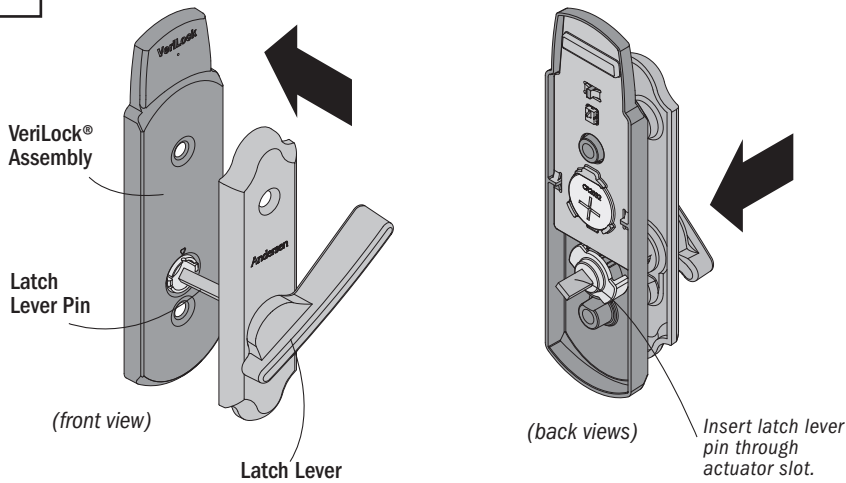
Interior



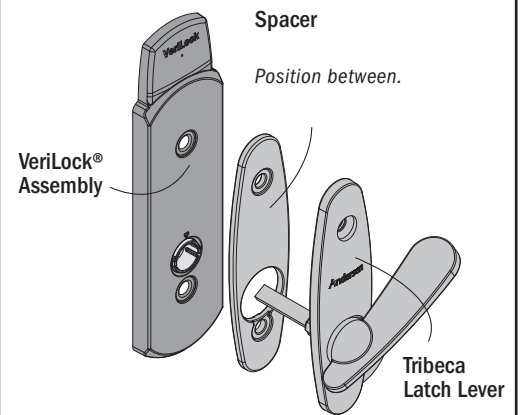
Select preferred color VeriLock face plate. Press sensor into back side of face plate. Install actuator as shown and battery with (+) facing out as shown. Indicator light will illuminate for one second when battery is installed correctly.

3

Interior



**Tribeca® Hardware Only**



For Tribeca hardware only, select preferred color spacer and position between the VeriLock sensor assembly and Tribeca latch lever as shown.

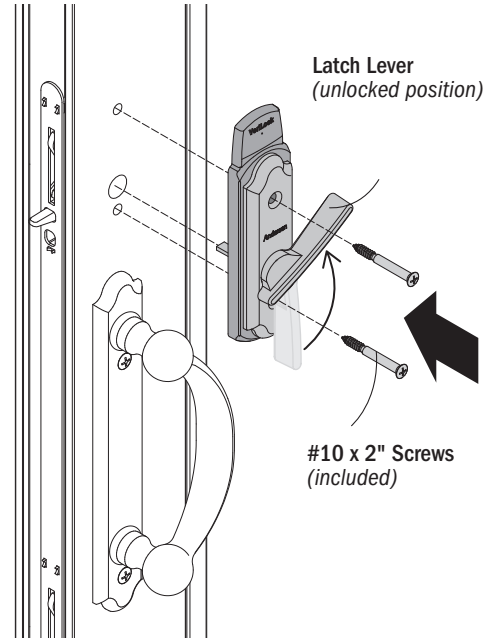
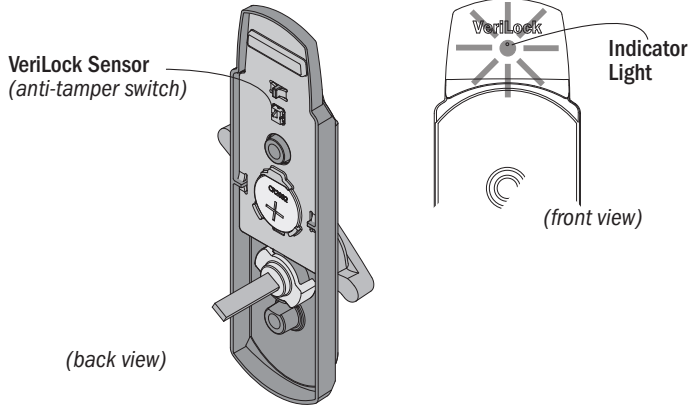
Insert latch lever pin through actuator slot as shown.

4

Interior

**CAUTION /**

Sensor contains an anti-tamper switch. Do not apply sensor over wet finish or rough/dirty surface. Improper switch function may result.



Verify panel surface is clean and dry. Position latch lever and VeriLock sensor assembly on panel as shown and fasten using #10 x 2" screws included. The indicator light will illuminate for one (1) second when the sensor assembly is applied to the panel as the anti-tamper switch is depressed.

**Magnet Application/**

**⚠ WARNING /**

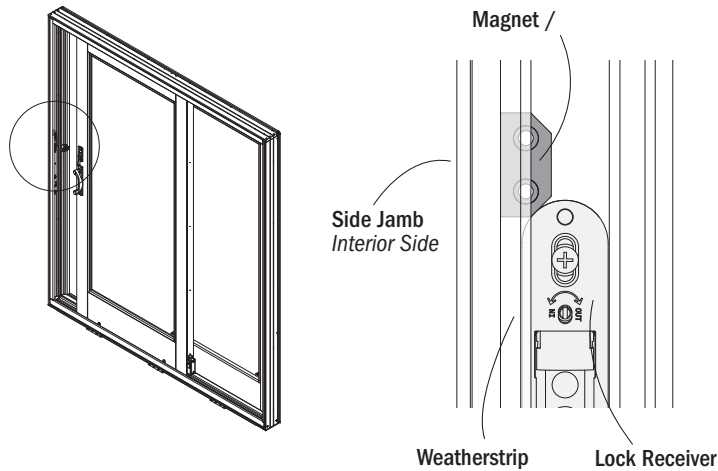
Magnets are small parts and, if swallowed, could pose a choking hazard to young children.

5

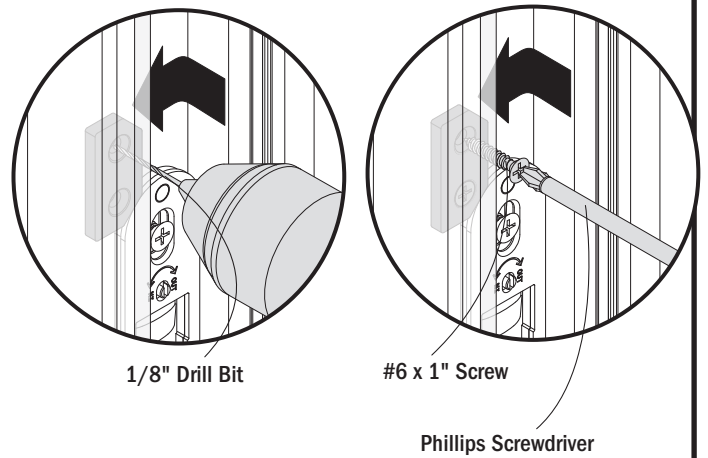
Interior

**CAUTION /**

Do not pinch or drill through weatherstrip. Product damage will occur.



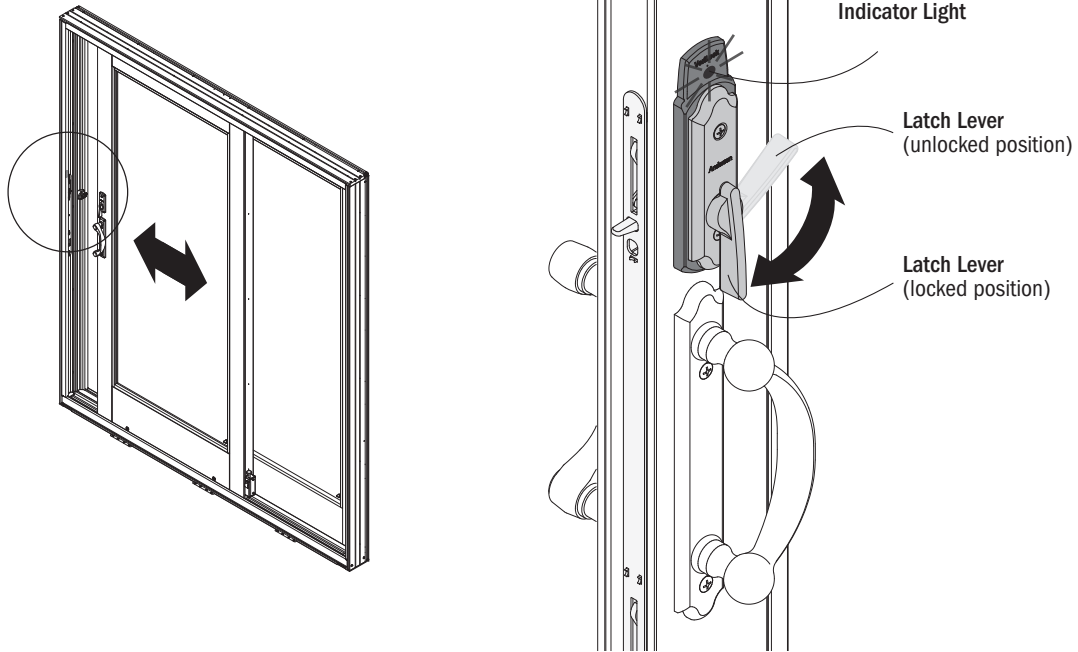
Side jamb and weatherstrip shown transparent for clarity.



Position magnet on side jamb behind weatherstrip. Slide tight to interior edge of lock receiver as shown and pre-drill two (2) 1/8" holes, 3/4" deep using magnet holes as a template. Fasten with two (2) #6 x 1" screws.

6

Interior



1. Close door without locking. Indicator light will illuminate for one (1) second.
2. Lock door with latch lever. Indicator light will illuminate for one (1) second. Verify door is locked.
3. Unlock door with latch lever. Indicator light will illuminate for one (1) second.
4. Open door. Indicator light will illuminate for one (1) second.

Verify VeriLock sensor function. If indicator light does not respond as described, verify sensor application and magnet placement.

► Procedure is complete.

Refer to monitoring system of your choice for sensor enrollment. /

For maintenance information, please visit <http://www.andersenwindows.com/verilock> and consult with the VeriLock® user guide.

## **Federal Communications Commission (FCC) Part 15 Statement**

This device complies with FCC Rules Part 15. Operation is subject to the following two conditions: (1) This device may not cause harmful interference. (2) This device must accept any interference that may be received, including interference that may cause undesired operation.

## **Industry Canada (IC) RSS Statement**

This device complies with Industry Canada license-exempt RSS standard(s). Operation is subject to the following two conditions: (1) This device may not cause interference, and (2) This device must accept any interference, including interference that may cause undesired operation of the device.

Le présent appareil est conforme aux CNR d'Industrie Canada applicables aux appareils radio exempts de licence. L'exploitation est autorisée aux deux conditions suivantes: (1) l'appareil ne doit pas produire de brouillage; (2) l'utilisateur de l'appareil doit accepter tout brouillage radioélectrique subi, même si le brouillage est susceptible d'en compromettre le fonctionnement.

Changes or modifications not expressly approved by Andersen may void the user's authority to operate the equipment.