



MOTO™ W165/W172

Getting Started Guide

accessories



more information
GOTO
accessories: www.motorola.com
support: www.motorola.com/support

68xxxx354-A

congratulations!

Congratulations on your purchase of the stylish Motorola W165/W172 phone. Whether you're a talker or a texter, your phone does it all.

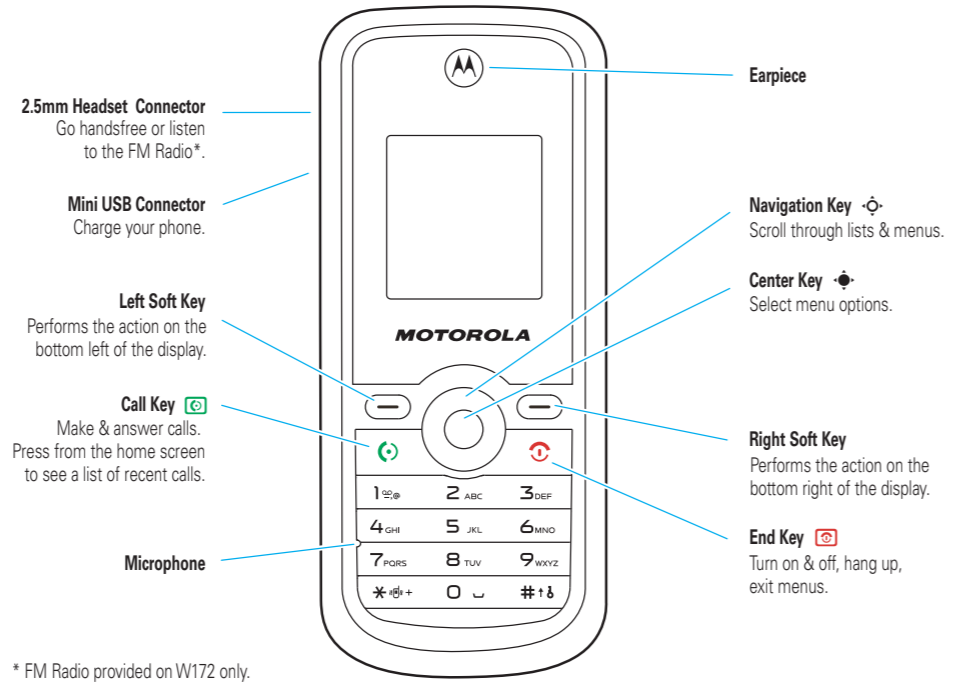
We've crammed all the main features of your phone into this handy guide, and in a matter of minutes you'll see just how easy your phone is to use. So, go on, check it out. Browse the menus and press Option to see more. You may be surprised at what you discover.

If you'd like even more information about how to use your new phone, visit www.motorola.com/support

Note: Your phone may not appear exactly as the images in this manual. However, all key locations, sequences, and functions are the same.

Caution: Before using your phone for the first time, please read the important legal and safety information on the back of this guide.

your phone



* FM Radio provided on W172 only.

tips & tricks

see recent calls

Press [Call Key].
use application shortcuts
Press the navigation key [Up/Down/Left/Right].
To choose the applications you want to access, press Menu > Settings > Shortcut.

go to your phonebook

Press Phonebook (right soft key).

access voicemail

Press and hold [1].

change ring style

Press and hold [X].

lock/unlock keypad

To lock, press and hold [#]. To unlock, press Unlock then [#].

To set an automatic lock, press Menu > Settings > Phone settings > Keypad lock.

calls

make & answer calls

To make a call, enter a number from the home screen and press [Call Key].
To answer a call when your phone rings or vibrates, press [Call Key].

end a call

Press [End Key].

adjust volume

You can adjust the volume during a call by pressing [Left/Right]. To mute a call, press Option > Mute.

emergency calls

To call an emergency number, enter the emergency number and press [Call Key].

Your service provider programs emergency phone numbers (such as 112 or 911) that you can call under any circumstances, even when your phone is locked.

more call features

Table with call features: make international calls, set answer options, forward calls, restrict calls. Includes menu paths and icons.

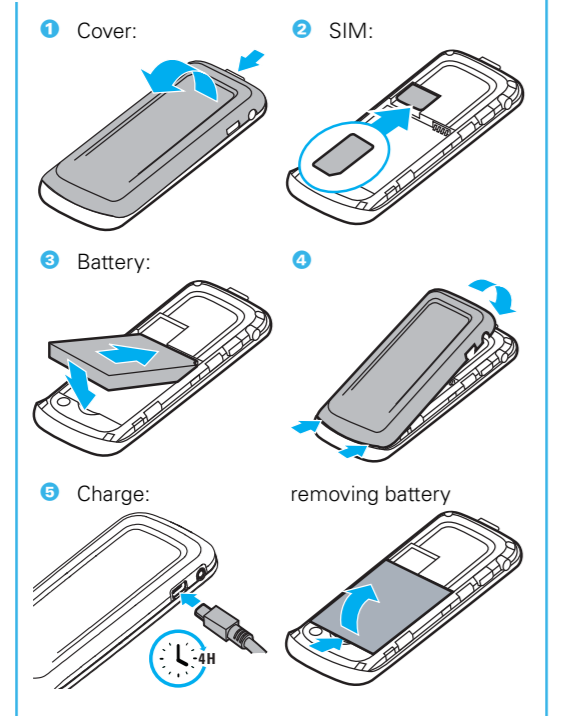
FM radio

listen to your favorite news or music program
Note: Available on W172 only.
1 Plug a 2.5 mm headset into your phone.
Note: The FM radio only works when the headset is plugged in.
2 Press Menu > Extras > FM.
To turn the radio on/off, press [Power].
To tune in a station, press [Left/Right].
To scan available stations, press and hold [Left/Right]. Repeat to go to more stations.
To adjust volume, press [Up/Down].
To hide the radio, press Back.
store favorite stations
When listening to the radio, press Option and select Channel list to view and edit your preset stations, select Manual input to enter a station or select Auto search to search for stations and populate the list. To select a preset station, press the number key for the station you want.

menu map

- Messaging: SMS, Voice mailbox, Info service
Recent Calls: All records, Incoming calls, Outgoing calls, Missed calls, Call duration, Message counter
Phonebook: Create, View, Search, Storage status, Speed dial, Fixed dial, Enable FDN, Caller groups, Delete all entries, Copy
Settings: Phone settings, Display settings, Network settings, Call settings, Shortcut
Ring Styles: General, Conference, Outdoor, Mute, Customize
Extras: BMI, Countdown, Stopwatch, FM
Office Tools: Alarm clock, Calendar, To do list, World clock, Calculator, Unit converter, Currency
Games: STK
This is a standard main menu layout. Your phone's menu may be a little different.
* W172 only

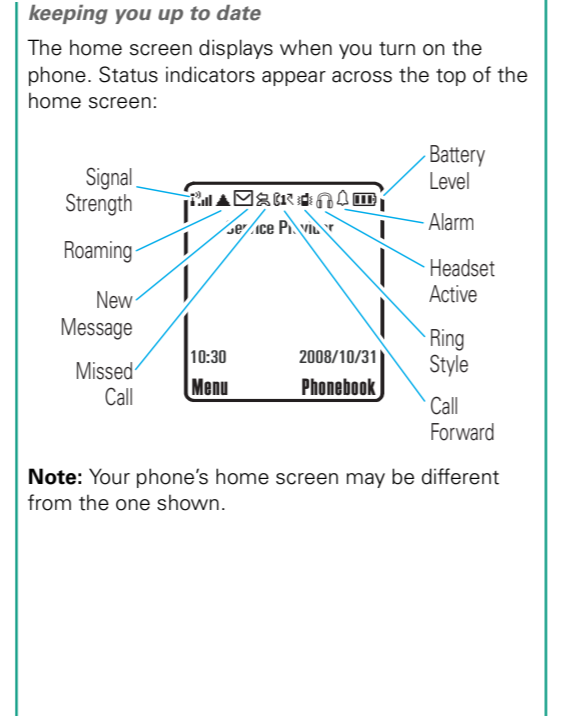
let's go



basics

here are some basics to get you started
turn it on & off
Press and hold [Power] for a few seconds to turn the phone on/off.
menu navigation
From the home screen, press the center key [Up] or Menu (left soft key) to open the Main Menu.
Press the navigation key [Up/Down/Left/Right] to highlight a menu option.
Press [Up] or Select (left soft key) to select the highlighted option.
Where available, press Option (left soft key) to display more menu options.

home screen



personalize

go ahead, add your personal touch
ring styles & alerts
Choose your ring style.
Find it: Menu > Ring Styles > Style > Activate
set details
Choose your ringtones, alerts, volume levels, reminders and more.
Find it: Menu > Ring Styles > Style > Personalize
set wallpaper, screen saver & more
Change the wallpaper, screen saver and color scheme to one that makes you smile.
Find it: Menu > Settings > Display settings > Wallpaper, Screen saver or Color schemes
Change the display contrast and back light timeout.
Find it: Menu > Settings > Display settings > LCD contrast or Back light

phonebook

met someone new? save their number
save a contact
1 Enter the number on the home screen and press Save.
2 Choose to save your contact to your SIM card or phone memory.
3 Enter the contact name and press OK.
call a contact
1 Press Phonebook (right soft key) or press Menu > Phonebook > View > All.
2 Scroll through the list to highlight the contact.
3 Press [Call Key].
Tip: When a contact is highlighted, press Detail > Option > Send message to send a text message to your contact.
transfer your contacts
If you want to transfer your contacts from your old phone to your new phone, simply save all your contacts to your SIM card on your old phone. When you put the SIM card into your new phone, the contacts will all be in your phonebook.

messages

sometimes it's better 2 say it in a message
create & send a message
1 Press Menu > Messaging > SMS > Write message.
2 Enter message text.
Tip: Press [X] to switch text entry modes.
3 When you finish the message, press Option > Send.
receive a message
When you receive a new message, a notification appears. Press Select to read the message immediately, or press Cancel to save it to your inbox for viewing later.
Find it: Menu > Messaging > SMS > Inbox
enter text
When entering text, press [X] to switch text entry modes:
• tap (ABC, Abc or abc)—Press a key one or more times to cycle through the letters and numbers of the key you press. When you've got the character you want, just press another key or wait a second or two to move on.
• eZi English (En)—Predictive text. Combines single key presses and predicts each word as you enter it. Just press each key once for each

tools

stay on top of things with these handy tools
calendar
Find it: Menu > Office Tools > Calendar
Scroll to the day you want and press [Power]. Select Add appointment to add an event or select View to see events for that day.
When an event reminder occurs, press Ok to dismiss it.
Tip: To see a summary of your calendar events and add, edit or delete events, you can also use the to do list - press Menu > Office Tools > To do list.
alarm
Find it: Menu > Office Tools > Alarm clock
calculator
Find it: Menu > Office Tools > Calculator
Tip: To convert length/weight units or convert currency, press Menu > Office Tools > Unit converter or Currency.

