

Contents

1. For your Safety	4
2. Mobile Phone Profile	7
3. Preparation before Use	9
<i>Install SIM Card</i>	9
<i>Install Memory card</i>	10
<i>Install Battery.....</i>	11
<i>Charge Battery</i>	12
<i>Notices on using the battery</i>	13
<i>PIN code</i>	14
4. Use of Menu Functions	15
<i>File.....</i>	15
<i>Contacts</i>	15
<i>Call logs.....</i>	17
<i>Message.....</i>	18
<i>Camcorder.....</i>	19
<i>Organizer</i>	19
<i>ATV.....</i>	20

<i>FM radio</i>	20
<i>Browser</i>	21
<i>Dialer</i>	21
<i>Java</i>	21
<i>Settings</i>	22
<i>Connectivity</i>	24
<i>Bluetooth</i>	25
<i>WLAN</i>	25
<i>Profiles</i>	25
<i>Recorder</i>	26
<i>Multimedia</i>	27
<i>Calendar</i>	27
<i>Facebook</i>	27
<i>Twitter</i>	28
<i>Album</i>	28
5. Use of USB	28
6. Maintenance & Safety	28
<i>After sales service</i>	29

<i>Charger and Adapter Safety</i>	29
<i>Battery Information and Care</i>	29
<i>General Notice</i>	29
<i>Troubleshooting</i>	30
7. Abbreviations	32

1. For your Safety

For your safety and proper use of the mobile phone, please read the following guidelines carefully: Do not switch the mobile phone on when close to chemical factory, gas station or other explosive objects.

- During driving, please use headset for safety purpose; unless otherwise in emergency, always stop the car on roadside to have a call conversation.
- Because the use of the mobile phone can cause interference in the aircraft, never use the mobile phone in aircraft. The use of the mobile phone is dangerous and illegal; do switch off the mobile phone before boarding.
- Pay special attention to the use of the mobile phone near heart pacemaker, deaf-aid and some other medical equipment, because the mobile phone can cause interference with them.
- None-original factory's accessories and parts will lose guarantee.
- Do not dismantle the mobile phone without permission. In case of failure, please contact the supplier as soon as possible.
- Do not plug the charger into the mobile phone and charge without battery. Always power off the mobile phone when taking out the battery; otherwise the memory of the phone may be damaged.
- When charging the mobile phone, always keep it in the place with good ventilation, heat sink and away from

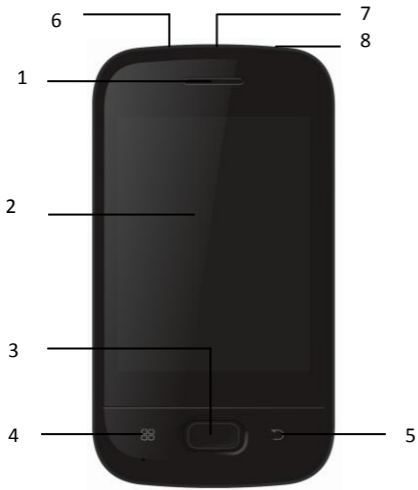
flammable and explosive objects.

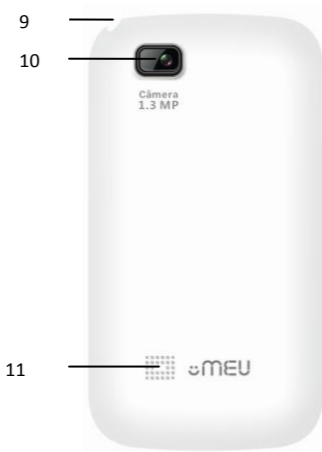
- In order to avoid demagnetization, always keep the mobile phone away from magnetic objects such as CD, credit card etc.
- Ensure the mobile phone not to contact any liquid; once such case occurs, remove the battery and contact the supplier immediately.
- Do not use the mobile phone in the environment at too high or too low temperature, never expose the mobile phone under strong sunshine or too wet environment. The suitable temperature for the phone and accessories is 0°C-40°C. The height to use the phone shall be less than 2,000m.
- Do not use liquid or wet cloth with strong cleanser to clean the mobile phone.
- This mobile phone has shooting, videoing and audio recording functions, which shall be used as per the related laws and regulations.
- Always keep the mobile phone out of children's reach. Do not throw or vibrate the mobile phone because violent treatment to the mobile phone may damage the inner circuits and precise structures.
- Please do not discard the waste battery into general household garbage. Please deal with the waste battery according to provisions where they are definitely made.

Warning: We will not bear any responsibility for any incompliance with the above guidelines or improper use of the mobile phone. Our company keeps the right to make

modifications to any of the content here in this user guide without public announcement in advance. The content of this manual may vary from the actual content displayed in the mobile phone. In such case, the latter shall govern.

2. Mobile Phone Profile





1.	Receiver	7.	USB jack
2.	LCD	8.	End/Power key
3.	Home Key	9.	Antenna
4.	Menu key	10.	Camera
5.	Back key	11.	Speaker
6.	Headset port		

3. Preparation before Use

Install SIM Card

When registering mobile phone number, you can apply for two different phone numbers, two different mobile phone network service providers and thus obtain two SIM (Subscriber Identification Module) cards.

With these two SIM cards, you can use all functions of your mobile phone. The SIM cards save the parameters needed for communications and personal data, including PIN (Personal Identification Number) code, phonebook, short message and other extra system services.

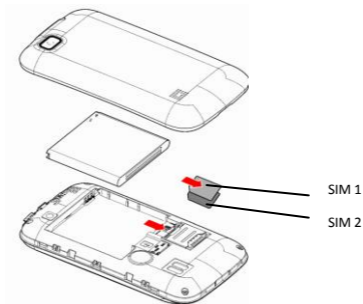
Warning: Do not distort or scratch the SIM card nor let it contact static, dust or moisture. If it is lost, please contact immediately your network operator for help.

Before SIM card installation, please switch off the mobile phone. The SIM card is installed on the back of the mobile phone.

Follow the following diagram to install the SIM card. Please insert the host SIM card into the SIM1 slot and the slave SIM card into the SIM2 slot.

Note: If SIM card is inserted only into the SIM1 slot, then only the host works; likely, If SIM card is inserted only into the SIM2 slot, then only the slave works. When two SIM cards are inserted into the SIM1 slot and SIM2 slot respectively, you can choose work mode freely as you wish.

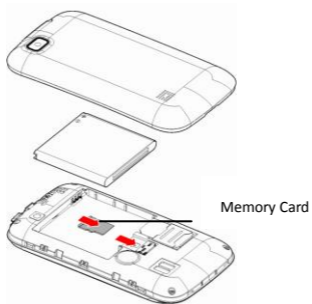
Note: As the SIM card is small object, keep it out of children's touch or prevent children gulping it!



Install Memory card

As the mobile phone does not have enough storage space, to use some functions, you need to install a memory card (This mobile phone use MICRO SD card.)

Install MICRO SD card: Open the back cover to take out the battery, release the Micro SD card lock, insert the Micro SD card into its slot, and restore the lock and the battery before restarting the mobile phone.



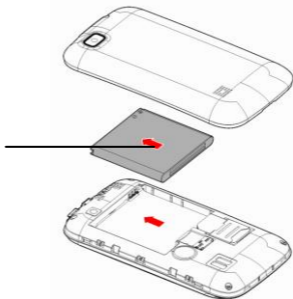
Note: As the MICRO SD card is small object, keep it out of children's touch or prevent children gulping it!

Install Battery

The mobile phone is suitable for original battery and accessories. When the battery is idle, it is recommended to put it into the protection box. Follow the following diagram to install the battery.

Note: Do install the battery as per the diagram so as prevent the battery contact patch being damaged.

Battery



Charge Battery

The new battery cannot reach the optimal efficiency unless it has undergone several continuous complete charges and discharges.

When the battery is used up, charge it in time. Over-discharge can damage the battery.

After the battery is charged full, cut off the connection of charger with the AC power supply and the connection with the mobile phone. Note: Please beware that you use the correct way to connect USB cable with its jack.



During charging, the battery capacity icon on the screen flickers from the right to the left. After the battery is charged full, the icon is full of bars. Slight heat during charging is normal.

Warning: When a travel charger and its accessories are used to charge the battery, please firstly check if they are original or recognized by the original manufacturer. The use of other accessories may damage your mobile phone and cause risks! Always use them indoor and dry places.

Notices on using the battery

The performance of the battery is affected by many factors, including radio barrier network settings, signal strength, signal strength, work temperature, chosen and used functions or settings as well as phone accessories, tone, data or other applications.

For optimal performances, please follow the rules below:

- New battery or the battery having been idle for long need charging for long. The standard voltage scope for the battery is 3.6V-4.2V.
- During charging, keep the battery at room temperature or similar temperature.
- With time passing by, the battery will gradually be worn and thus need longer time to charge. This is normal. However, after normal charging, if call duration decreases but charging time increases, you need to buy another battery from the original manufacturer or authorized by

the original manufacturer. The battery of interior quality can damage your mobile phone and cause danger!

- If the phone is overused at low battery when charging, there might need a longer time for the charge indicator to be shown on the screen.

Note: Please dispose the battery according to the local regulations. Try to recycle the battery as possible. Do not treat the waste battery as common waste.

Warning: Do not throw the battery into fire so as to prevent fire. The broken battery may cause explosion.

Warning

Charging the mobile phone by improper means can cause to explosion. Always refer to the related regulations for the disposal of the battery.

PIN code

PIN1 Code: It is the personal identification number used to enter SIM and able to prevent others using SIM1 without permission. If the mobile phone has activated the PIN1 code protection, when the mobile phone is switched on, the screen will display "Input PIN". In the process of inputting PIN1 code, the screen will use "*" to represent the input content. While obtaining SIM, you can obtain its PIN1 code.

PIN2 Code: It is the personal identification number used for some special functions such as paid call etc.

PUK Code and PUK2 Code(8-digit)

To change the locked PIN code, you need to use PUK (Personal Unblocking Key) code. To change the locked PIN2 code, you need to use PUK2 code. If these two codes are not provided together with the SIM cards, ask the local service provider for them.

Warning: If the PIN code is input wrongly for successively three times, the SIM card will be locked. Please contact the network operator immediately for help. Attempt to unlock the code may make the SIM card ineffective permanently!

4. Use of Menu Functions

File

You can browse, open and manage the data saved in the Phone and Memory card by accessing the File Manager sub-menu. The phone provides a certain space for users to manage files and supports the Micro SD card.

Contacts

Contacts menu refers to the directory wherein all the contacts are stored in an alphabetical order. You can view, edit, delete, send message and perform various other functions on each contact of your phonebook.

To access the contacts menu, enter the Main Menu tapping the

center Application icon and then select Contacts.

Add a new contact

- Enter Contacts menu and select **“Add new contact”**
- Select the desired storage i.e. SIM/Phone and enter the required details. Further, you can also assign a specific picture and ringtone to the new contact, if the storage is selected as “phone”.

Quick search

Input certain letter or numeric, you can have a quick search.

Input the first characters of a name to be searched.

Select a desired entry from the list.

Select a contact from the phonebook and tap options to perform the following operations:

- **View:** View the detailed info of a selected contact.
- **Send text message:** Send a message to the contact.
- **Send multimedia message:** Send a multimedia message to the contact.
- **Call:** Make a call to the contact.
- **Edit:** Edit the contact.
- **Delete:** Delete the current contact.
- **Copy:** Copy the entry to phone, to master SIM or to slave SIM.
- **Mark several:** You can mark several numbers.

- Groups: you can create new groups and classify the contacts in group.

- Phonebook backup: Backup the contacts.

Phonebook settings: Manage the phonebook settings with this function.

- Speed dial: Tap main menu key, go to main menu > Phonebook, choose a contact and scroll down to phonebook settings to find out speed dial, set speed dial On and set numbers. While on standby mode, press any of the number keys from 2~9 to make a speed dial call.

Call logs

In dual-SIM mode, you can separately search the call register of SIM1 and SIM2 and set separately some operations corresponding to SIM1 and SIM2. In mono-SIM standby mode, you can set the available SIM card and see its call register.

Call history includes missed calls, dialed calls and received calls.

In missed calls, received calls and dialed calls function lists, you can see the date and time of the call, edit or delete the phone number in the list, save the number to phonebook or send SMS and MMS to the number, etc.

Note: SIM1 and SIM2 contain respectively 20 entries. Choose

any entry from missed calls, received calls and dialed calls, press the Send key to dial the number directly.

Missed calls: With the function, you can view the duration of all missed calls.

Dialed calls: With function, you can view the duration of all dialed calls.

Received calls: With the function, you can view the duration of all received calls.

Note: The actual call duration and service time in the bill of the service provider may be different from them, which depends on the network functions, accounting rounding and tax etc.

Message

Your phone features, sending and receiving of SMS (Short Message Service). A SMS is a text message that can only contain letters, numbers and symbols. To create a message, select **Write Message** option. Inbox sub-menu enables you to view all the messages received. All the messages that are sent successfully from SIM1 or SIM 2 get stored in the Sent Messages folder. Tap main menu > Message, do as follows:

Write Message: You can write SMS/MMS and then send out through SIM 1/2.

Inbox: You can see the SMS in the inbox.

Drafts: you can store the unsent and prominent messages here.

Outbox: While failing to send SMS, the messages will be saved here by default.

Sent messages: The message has been sent out, which will be saved here.

Broadcast message: Cell broadcast is a kind of information service such as weather report, traffic etc that the network operator sends to the GSM users within certain area. In dual-SIM mode, you can separately set SIM1 and SIM2.

Message settings: you can set text message here.

Camcorder

You can take photos and with the embodied camera.

Organizer

Alarm

The system has set 5 alarm clock options and the defaulted is off. You can activate one option or all options according to the actual demand. **Tips:** When the mobile phone is off, the alarm clock can still work provided the battery is sufficient.

World clock

The system gives different time zones in the world.

ATV

You can search television program as you must set the exact local region. For instance, Linda is in Brazil of South America, you can set the region as Brazil.

FM radio

Your mobile phone supports FM radio. To use the mobile phone to listen to radio, insert the headset connection cable into the headset port on the mobile phone. The headset connection cable functions as the antenna of the FM radio, so it should hang freely. While listening to radio, you can dial or receive a call normally. During call conversation, the radio will turn mute automatically. If some applications are using GPRS or CSD to send or receive data, they may interfere with the radio.

When the FM radio is activated, the mobile phone will display the number and name (if having been saved) and frequency of the radio channel.

Option menu

- Channel list: You can edit and save 30 channels.

- Manual input: You can edit the specified radio frequency band. The frequency of the radio is between 87.5mHz and 108.0mHz.
- Preset Auto Search: You can automatically search and save the searched channels into the list.
- Settings: You can set background play, loud speaker, record format, audio quality and record storage.

Browser

Go to Main menu> Browser> Data account, and activate the desired SIM networking account. The moment you activate your account, you can surf internet.

Dialer

Input a complete phone number tap call 1 icon or call 2 icon to dial out. To make an international call, long press * key until "+" appears, then input international call number. To activate silent mode, long press "#" key.

Java

Your device offers you a game for fun and java.

Settings

Dual SIM settings

You can in any place and at any time set the dual-mode mobile phone as the following modes according to your own demand:

- ✧ Dual SIM open
- ✧ Only SIM1 open
- ✧ Only SIM2 open

Phone Settings

In such menu, you can set phone language, standby wallpaper, time etc.

- Time and Date: With this function, you can set city, time and date format and the time of specific place.
- Schedule Power on/off: You can set the time for schedule Power on/off.
- Language: You can choose the desired language for phone display.
- Write language: you can set a prior among ABC, abc, Abc or Numeric as your choice
- Widget manager: Select widget and order widget..
- Display: Users can access this item to set wallpaper, Screen auto lock, etc.
- Auto update time
- Flight mode: Once Flight mode is on, your phone will

have no service.

- UART settings: Select SIM 1 or SIM 2.
- Touch vibration switch: On/Off.

Network settings

You can make networking selection from SIM 1 or SIM 2.

Security settings

SIM Security

- PIN Lock: You can set SIM lock (PIN code) as on/off. When this option is chosen, it is necessary to input PIN code for every insert of the SIM card.
- Change PIN: you should contact with the SIM networking operator to get the PIN code firstly and then you can change the SIM password.

Phone security

- Phone lock: To set On. While you power on the device next time, you may be asked for a password, please input 0000.
- Change password: You can change the default phone password "0000" into 4-8-digit number that is easy to

remember. If the phone lock is activated, when switched on, the mobile phone will hint “Phone locked”. To unlock it, you can input the phone lock password and click OK.

Call settings

[SIM 1/SIM 2 call settings]

- **Call ID/ Call Waiting/ Call Divert/ Call barring/Line switching/Group list.**

You can view a list of above.

Furthermore, you can access advanced settings to set Blacklist, Auto redial, Call time reminder, Reject by SMS, etc.

Restore Factory Settings

You can restore the factory settings of the mobile phone. The factory setting password is 0000.

Connectivity

GSM Data—You can set the number, name DNS etc.

GPRS—You can set the name, APN, user name, password, Auth. type, DNS.

Note: For related charging standard and detailed settings, please consult the local network service operator. Different network service providers provide different services. Consult the local network operator.

Bluetooth

The mobile phone supports the Bluetooth function. You can use Bluetooth wireless technology to set wireless connection with other compatible devices, including mobile phone, computer, headset, in-car accessories etc. You can transfer data, such as music to other device using Bluetooth.

WLAN

Enter WLAN, the device will automatically search available networks. Choose one to connect. Some WIFI may need password.

Profiles

Your mobile phone is provided with multiple profiles so that you can customize some settings in different cases for different events. Firstly, as per your personal hobby, have individualized settings on profile and then activate it. You can have such profiles as General, Silent, Meeting and Outdoor.

The content can be edited at every profiles mode as following:

- Alert type: You can choose any one from Ring, Vibration, Vibration and Ring, Vibration then Ring as the current ring mode.
- Ring Type: You can choose any one from single, repeat and ascending as the current ring type.

- SIM incoming call: Set the incoming call ringtone.
- Ringtone volume: Set the ringtone volume.
- SIM message: Set the SIM message ringtone.
- Message volume: Set the message ringtone volume.
- Keypad: Set Click or Tone.
- Key tone volume: set the volume of key tone.
- Touch vibration: Set the touch vibration.
- Power on: Set power on ringtone.
- Power off: Set power off ringtone.
- System alert: On/off.

After individualized settings, choose “Activate” in “Select” to start profiles.

Note: After the headset is inserted into the mobile phone, the mobile phone will automatically change into headset profile. Unplug the headset to return to the previous profile.

In dial interface, you can long press # key to switch to silence profile and again to the previous profile.

Recorder

Use this function to record audio files. The phone supports WAV and AMR format.

Multimedia

The Music Player allows you to play audio files. Please save your audio files in the My Music folder of the Micro SD card memory card.

Note: If the operation system is Windows 2000 above, no driver needs installing. To download music, you must insert the Micro SD card into the mobile phone, switch on the mobile phone, connect the mobile phone and PC with USB cable, then the PC will detect the new hardware and create a new mobile HD. (Only the music in MP3, AMR and MIDI are supportable).

Calendar

With this function, you can set the alarm clock to remind you of your schedule and record your schedule. Roll the highlight block to the desired date and then the current date will be highlighted in green. If the date is set with memo function, then this date will be highlighted in red. To view all memos of one day, press OK to see the schedule.

Facebook

You can choose use WLAN network or cellular network to load your Facebook. After loading, you can communicate with your friends all around the world.

Twitter

You can choose use WLAN network or cellular network to load twitter. After loading, you can communicate with your friends all around the world.

Album

Pictures taken can be accessed quickly through Image Viewer. Go to Menu > Multimedia > Image viewer. All the images available in the storage selected by you are displayed.

5. Use of USB

Notices before use

- Always connect and stop USB device correctly.
- Never use Windows formatting command to format the mobile disk of the mobile phone; otherwise, it will be damaged severely.
- USB work environment:
 - Windows2000 / XP.
 - For other operation systems, the connection between PC and the mobile phone cannot be conducted unless USB driver is installed.

6. Maintenance & Safety

Please read and observe the following information for safe and

proper use of your phone and to prevent damage. Also, keep the user guide in an accessible place at all the times after reading it.

After sales service

You are kindly referred to the Warranty Card provided in the sales package box.

Charger and Adapter Safety

Charger and adapter are designed for indoor use only.

Battery Information and Care

- Please dispose of your battery properly.
- Do not disassemble or short-circuit the battery.
- Keep the battery's metal contacts clean.
- Recharge the battery after long periods of non-use to maximize battery life.
- Battery life will vary due to usage patterns and environmental conditions.
- The self-protection function of the battery cuts the power of the phone when its operation is in an abnormal status. In this case, remove the battery from the phone, reinsert it, and turn the phone on.

General Notice

- Using a damaged battery or placing a battery in your

mouth may cause serious injury.

- Do not place items containing magnetic components such as a credit card, phone card, bank book, or subway ticket near your phone. The magnetism of the phone may damage the data stored in the magnetic strip.
- Talking on your phone for long period of time may reduce call quality due to heat generated during use.
- When the phone is not used for a long period time, store it in a safe place with the power cord unplugged.
- Using the phone in proximity to receiving equipment (i.e. TV or Radio) may cause interference to the phone.
- Do not immerse your phone in water. If this happens, remove the battery and take it to Authorized Service Center.
- Do not paint your phone.
- The data saved in your phone might be deleted due to careless use, repair of the phone, or upgrade of the software. Please backup your important phone numbers. (Ring tones, text messages, voice messages, picture, and videos could also be deleted.) The manufacturer is not liable for damage due to the loss of data.
- Do not turn your phone on or off when the phone is close to your ear.

Troubleshooting

Phenomena	Possible Causes
-----------	-----------------

<p>Unable to switch on</p>	<ol style="list-style-type: none"> 1. Does the battery have power? 2. Is the battery placed correctly
<p>SIM failed</p>	<ol style="list-style-type: none"> 1. The SIM card is dirty. Clean it. 2. Reinstall the SIM card. 3. The SIM card is damaged. Replace it.
<p>Poor signals</p>	<p>Check the signal strength icon on the screen. If the icon contains 4 bars, it indicates the signal is the strongest; if below 1 bars, it indicates the signal is very poor.</p>
<p>Unable to dial out</p>	<ol style="list-style-type: none"> 1. Maybe you have set Hide My Caller ID but your network operator does not provide this service for you. 2. Strong interference exists around you. 3. Maybe you have activated the call restriction function. 4. Maybe you have activated Line 2 but your network operator does not provide this service for you.

Unable to charge the battery	<ol style="list-style-type: none"> 1. The battery may discharge too much; so it cannot be charged until it is connected for certain time. 2. Its performance has worsened.
Unable to register to the network	<ol style="list-style-type: none"> 1. Too weak signals or strong interference. 2. SIM card installed properly? Bad contact or SIM card damaged? If the SIM card is broken, please contact the network operator to replace it.
Unable to access service menus.	Maybe the SIM card does not support service function.
Only part of the photo set as standby photo can be seen.	The size of the photo may be too big. The recommended size is 220*176

7. Abbreviations

SMS	Short Message Service
EMS	Enhanced Message Service
SIM	Subscriber Identity Module

GSM	Global System for Mobile Communication
PIN	Personal Identity Number
PUK	PIN Unblocking Key
IMEI	International Mobile Equipment Identity
CB	Cell Broadcast
GPRS	General Packet Radio Service
Card 1	The card inserted in SIM1 slot
Card 2	The card inserted in SIM2 slot

- This device complies with part 15 of the FCC Rules. Operation is subject to the following two conditions: (1) This device may not cause harmful interference, and (2) this device must accept any interference received, including interference that may cause undesired operation.
-
- This device has been tested and found to comply with the limits for a Class B digital device, pursuant to Part 15 of the FCC Rules. These limits are designed to provide reasonable protection against harmful interference in a residential installation. This equipment generates, uses, and can radiate radio frequency energy, and, if not installed and used in accordance with the instructions, may cause harmful interference to radio communications. However, there is no guarantee that interference will not

occur in a particular installation. If this equipment does cause harmful interference to radio or television reception, which can be determined by turning the equipment off and on, the user is encouraged to try to correct the interference by one or more of the following measures:

- Reorient or relocate the receiving antenna.
- Increase the separation between the equipment and receiver.
- Connect the equipment into an outlet on a circuit different from that to which the receiver is connected.
- Consult the dealer or an experienced radio/TV technician for help.
-
- **FCC Caution:**
- Any Changes or modifications not expressly approved by the party responsible for compliance could void the user's authority to operate the equipment.
-
- The antenna(s) used for this transmitter must not be co-located or operating in conjunction with any other antenna or transmitter.
-
- **Note:** The country code selection is for non-US model only and is not available to all US model. Per FCC regulation, all WiFi product marketed in US must fixed to US operation channels only.

- ▶ RF Exposure Information (SAR)
- This device meets the government's requirements for exposure to radio waves.
- This device is designed and manufactured not to exceed the emission limits for exposure to radio frequency (RF) energy set by the Federal Communications Commission of the U.S. Government.
-
- The exposure standard for wireless device employs a unit of measurement known as the Specific Absorption Rate, or SAR. The SAR limit set by the FCC is 1.6W/kg. *Tests for SAR are conducted using standard operating positions accepted by the FCC with the device transmitting at its highest certified power level in all tested frequency bands. Although the SAR is determined at the highest certified power level, the actual SAR level of the device while operating can be well below the maximum value. This is because the device is designed to operate at multiple power levels so as to use only the power required to reach the network. In general, the closer you are to a wireless base station antenna, the lower the power output.
-
- The highest SAR value for the model device as reported to the FCC when tested for use at the ear is 1.01 W/kg and when worn on the body, as described in this user guide, is 0.42 W/kg (Body-worn measurements differ among device models, depending upon available

accessories and FCC requirements.)

-
- While there may be differences between the SAR levels of various devices and at various positions, they all meet the government requirement.
-
- The FCC has granted an Equipment Authorization for this model device with all reported SAR levels evaluated as in compliance with the FCC RF exposure guidelines. SAR information on this model device is on file with the FCC and can be found under the Display Grant section of www.fcc.gov/oet/ea/fccid after searching on FCC ID: WVBA936.
-
- For body worn operation, this device has been tested and meets the FCC RF exposure guidelines for use with an accessory that contains no metal and be positioned a minimum of 1.5cm from the body. Use of other accessories may not ensure compliance with FCC RF exposure guidelines. If you do not use a body-worn accessory and are not holding the device at the ear, position the handset a minimum of 1.5cm from your body when the device is switched on.
-