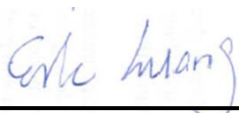


FCC SAR Test Report

APPLICANT : Brightstar Corporation
EQUIPMENT : Mobile Phone
BRAND NAME : Avvio
MODEL NAME : Avvio 778S / Avvio 778
FCC ID : WVBA778X
STANDARD : FCC 47 CFR Part 2 (2.1093)
ANSI/IEEE C95.1-1992
IEEE 1528-2003

The product was testing completed on Jan. 23, 2014. We, SPORTON INTERNATIONAL (XI'AN) INC., would like to declare that the tested sample has been evaluated in accordance with the procedures and shown the compliance with the applicable technical standards.

The test results in this report apply exclusively to the tested model / sample. Without written approval of SPORTON INTERNATIONAL (XI'AN) INC., the test report shall not be reproduced except in full.



Reviewed by: Eric Huang / Deputy Manager



Approved by: Jones Tsai / Manager



SPORTON INTERNATIONAL (XI'AN) INC.

1F, Building A3, No. 39 Chuangye Rd., Xi'an Hi-tech Zone, Shanxi Province, P.R.C.



Table of Contents

1. Statement of Compliance	4
2. Administration Data	5
2.1 Testing Laboratory	5
2.2 Applicant	5
2.3 Manufacturer	5
2.4 Application Details	5
3. General Information	6
3.1 Description of Equipment Under Test (EUT)	6
3.2 Maximum RF output power among production units	7
3.3 Applied Standard	8
3.4 Device Category and SAR Limits	8
3.5 Test Conditions	8
4. Specific Absorption Rate (SAR)	9
4.1 Introduction	9
4.2 SAR Definition	9
5. SAR Measurement System	10
5.1 E-Field Probe	11
5.2 Data Acquisition Electronics (DAE)	11
5.3 Robot	12
5.4 Measurement Server	12
5.5 Phantom	13
5.6 Device Holder	13
5.7 Data Storage and Evaluation	14
5.8 Test Equipment List	16
6. Tissue Simulating Liquids	17
7. System Verification Procedures	19
7.1 Purpose of System Performance check	19
7.2 System Setup	19
7.3 SAR System Verification Results	20
8. EUT Testing Position	21
8.1 Define two imaginary lines on the handset	21
8.2 Cheek Position	22
8.3 Tilted Position	22
8.4 Body Worn Position	23
9. Measurement Procedures	24
9.1 Spatial Peak SAR Evaluation	24
9.2 Power Reference Measurement	25
9.3 Area & Zoom Scan Procedures	25
9.4 Volume Scan Procedures	26
9.5 SAR Averaged Methods	26
9.6 Power Drift Monitoring	26
10. Bluetooth Exclusions Applied	26
11. Conducted RF Output Power (Unit: dBm)	27
12. Antenna Location	34
13. SAR Test Results	36
13.1 Head SAR	37
13.2 Hotspot SAR	38
13.3 Body Worn SAR	40
13.4 Repeated SAR Measurement	42
13.5 Highest SAR Plot	43
14. Simultaneous Transmission Analysis	48
14.1 Head Exposure Conditions	49
14.2 Hotspot Exposure Conditions	50
14.3 Body-Worn Exposure Conditions	52
14.4 SPLSR Evaluation and Analysis	53
15. Uncertainty Assessment	56
16. References	58
Appendix A. Plots of System Performance Check	
Appendix B. Plots of SAR Measurement	
Appendix C. DASy Calibration Certificate	
Appendix D. Test Setup Photos	



Revision History

REPORT NO.	VERSION	DESCRIPTION	ISSUED DATE
FA411502	Rev. 01	Initial issue of report	Feb. 12, 2014

1. Statement of Compliance

The maximum results of Specific Absorption Rate (SAR) found during testing for **Brightstar Corporation, Mobile Phone, Avvio 778S / Avvio 778** are as follows.

<Highest SAR Summary>

Exposure Position	Frequency Band	Reported 1g-SAR (W/kg)	Equipment Class	Highest Reported 1g-SAR (W/kg)
Head	GSM850	0.51	PCE	1.06
	GSM1900	1.06		
	WCDMA Band V	0.62		
	WCDMA Band II	0.79		
	WLAN 2.4GHz Band	1.44	DTS	1.44
Hotspot (Separation 1cm)	GSM850	1.14	PCE	1.48
	GSM1900	1.48		
	WCDMA Band V	1.03		
	WCDMA Band II	1.27		
	WLAN 2.4GHz Band	0.30	DTS	0.30
Body-worn (Separation 1cm)	GSM850	1.14	PCE	1.48
	GSM1900	1.48		
	WCDMA Band V	1.03		
	WCDMA Band II	1.27		
	WLAN 2.4GHz Band	0.24	DTS	0.24

<Highest Simultaneous transmission SAR>

Exposure Position	Frequency Band	Equipment Class	Highest Reported Simultaneous Transmission 1g-SAR (W/kg)
Head	GSM850	PCE	1.58
	WLAN 2.4GHz Band	DTS	
Hotspot (Separation 1cm)	GSM1900	PCE	1.58
	Bluetooth	DSS	

This device is in compliance with Specific Absorption Rate (SAR) for general population/uncontrolled exposure limits (1.6 W/kg) specified in FCC 47 CFR part 2 (2.1093) and ANSI/IEEE C95.1-1992, and had been tested in accordance with the measurement methods and procedures specified in IEEE 1528-2003.



2. Administration Data

2.1 Testing Laboratory

Test Site	SPORTON INTERNATIONAL (XI'AN) INC.
Test Site Location	1F, Building A3, No. 39 Chuangye Rd., Xi'an Hi-teck Zone, Shanxi Province, P. R. C. TEL: +86-029-8860-8767 FAX: +86-029-8860-8791

2.2 Applicant

Company Name	Brightstar Corporation
Address	9725 NW 117th Ave., Miami, Florida, FL 33178, United States

2.3 Manufacturer

Company Name	Konka Telecommunications Techenology co., LTD.
Address	Overseas Chinese Town, Nanshan District, Shenzhen, China

2.4 Application Details

Date of Start during the Test	Jan. 21, 2014
Date of End during the Test	Jan. 23, 2014



3. General Information

3.1 Description of Equipment Under Test (EUT)

Product Feature & Specification	
EUT	Mobile Phone
Brand Name	Avvio
Model Name	Avvio 778S / Avvio 778
FCC ID	WVBA778X
IMEI Code	#1: 862603024544155 #2: 862603024544163
Wireless Technology and Frequency Range	GSM850: 824.2 MHz ~ 848.8 MHz GSM1900: 1850.2 MHz ~ 1909.8 MHz WCDMA Band V: 826.4 MHz ~ 846.6 MHz WCDMA Band II: 1852.4 MHz ~ 1907.6 MHz WLAN 2.4GHz Band: 2412 MHz ~ 2462 MHz Bluetooth: 2402 MHz ~ 2480 MHz
Mode	<ul style="list-style-type: none">• GSM/GPRS/EGPRS• RMC/AMR 12.2Kbps Rel 99• HSDPA Rel 7, Cat14• HSUPA Rel 6, Cat6• HSPA+ Rel 7, Cat 14 (Downlink Only)• 802.11b/g/n HT20/HT40• Bluetooth v3.0 + EDR , Bluetooth v4.0 LE
Antenna Type	WWAN: PIFA Antenna WLAN: SMD ceramic Antenna Bluetooth: SMD ceramic Antenna
HW Version	1.1
SW Version	KAAI127_BV_Sp_En_0.01.103
Transfer Mode Category	Class B – EUT cannot support Packet Switched and Circuit Switched Network simultaneously but can automatically switch between Packet and Circuit Switched Network.
EUT Stage	Production Unit
Remark:	<ol style="list-style-type: none">1. The above EUT's information was declared by manufacturer. Please refer to the specifications or user's manual for more detailed description.2. The EUT supports GPRS/EGPRS Class 12 and has no DTM function.3. This device supported VoIP in GPRS/EDGE/WCDMA (e.g. 3rd part VoIP).4. There are two different types of EUT. They are single SIM card mobile (Model Name: Avvio 778) and dual SIM card mobile (Model Name: Avvio 778S). The others are the same including circuit design, PCB board, structure and all components. It is special to declare. After pre-scan two types of EUT, we found test result of the sample that dual SIM (Model Name: Avvio 778S) was the worst, so we choose dual SIM card mobile to perform all test.

3.2 Maximum RF output power among production units

Burst Average Power (dBm)		
Mode / Band	GSM850	GSM1900
GSM (GMSK, 1 Tx slot)	33	31
GPRS (GMSK, 1 Tx slot)	33	31
GPRS (GMSK, 2 Tx slots)	30.5	30
GPRS (GMSK, 3 Tx slots)	29	28.5
GPRS (GMSK, 4 Tx slots)	28	27.5
EDGE (8PSK, 1 Tx slot)	27.5	28
EDGE (8PSK, 2 Tx slots)	26.5	27
EDGE (8PSK, 3 Tx slots)	24.5	25
EDGE (8PSK, 4 Tx slots)	23.5	24

Maximum Target Power for Production Unit		
Mode / Band	WCDMA Band V	WCDMA Band II
AMR	23.5	23
RMC 12.2K	23.5	23
HSDPA Subtest-1	21	21
HSDPA Subtest-2	21	21
HSDPA Subtest-3	21	21
HSDPA Subtest-4	21	21
HSUPA Subtest-1	21	21
HSUPA Subtest-2	20	20.5
HSUPA Subtest-3	20.5	20.5
HSUPA Subtest-4	20	20
HSUPA Subtest-5	21	21

Average Power (dBm)				
Mode / Band	IEEE 802.11			
	11b	11g	11n-HT20	11n-HT40
WLAN 2.4GHz Band	17	13.5	13.5	11

Average Power (dBm)				
Mode / Band	1Mbps (GFSK)	2Mbps ($\pi/4$ -DQPSK)	3Mbps (8-DPSK)	BT4.0 LE (GFSK)
Bluetooth	7	5	5	0



3.3 Applied Standard

The Specific Absorption Rate (SAR) testing specification, method, and procedure for this device is in accordance with the following standards:

- FCC 47 CFR Part 2 (2.1093)
- ANSI/IEEE C95.1-1992
- IEEE 1528-2003
- FCC KDB 865664 D01 SAR Measurement 100 MHz to 6 GHz v01r02
- FCC KDB 865664 D02 SAR Reporting v01r01
- FCC KDB 447498 D01 General RF Exposure Guidance v05r01
- FCC KDB 648474 D04 Handset SAR v01r02
- FCC KDB 248227 D01 SAR meas for 802 11abg v01r02
- FCC KDB 941225 D01 SAR test for 3G devices v02
- FCC KDB 941225 D02 HSPA and 1x Advanced v02r02
- FCC KDB 941225 D03 SAR Test Reduction GSM GPRS EDGE v01
- FCC KDB 941225 D06 Hotspot Mode SAR v01r01

3.4 Device Category and SAR Limits

This device belongs to portable device category because its radiating structure is allowed to be used within 20 centimeters of the body of the user. Limit for General Population/Uncontrolled exposure should be applied for this device, it is 1.6 W/kg as averaged over any 1 gram of tissue.

3.5 Test Conditions

3.5.1 Ambient Condition

Ambient Temperature	20 to 24 °C
Humidity	< 60 %

3.5.2 Test Configuration

For WWAN SAR testing, the device was controlled by using a base station emulator. Communication between the device and the emulator was established by air link. The distance between the EUT and the antenna of the emulator is larger than 50 cm and the output power radiated from the emulator antenna is at least 30 dB smaller than the output power of EUT.

During WLAN SAR testing EUT is configured with the WLAN continuous TX tool, and the transmission duty factor was monitored on the spectrum analyzer with zero-span setting

For WLAN SAR testing, WLAN engineering testing software installed on the EUT can provide continuous transmitting RF signal.

4. Specific Absorption Rate (SAR)

4.1 Introduction

SAR is related to the rate at which energy is absorbed per unit mass in an object exposed to a radio field. The SAR distribution in a biological body is complicated and is usually carried out by experimental techniques or numerical modeling. The standard recommends limits for two tiers of groups, occupational/controlled and general population/uncontrolled, based on a person's awareness and ability to exercise control over his or her exposure. In general, occupational/controlled exposure limits are higher than the limits for general population/uncontrolled.

4.2 SAR Definition

The SAR definition is the time derivative (rate) of the incremental energy (dW) absorbed by (dissipated in) an incremental mass (dm) contained in a volume element (dv) of a given density (ρ). The equation description is as below:

$$\text{SAR} = \frac{d}{dt} \left(\frac{dW}{dm} \right) = \frac{d}{dt} \left(\frac{dW}{\rho dv} \right)$$

SAR is expressed in units of Watts per kilogram (W/kg)

SAR measurement can be either related to the temperature elevation in tissue by

$$\text{SAR} = c \left(\frac{\delta T}{\delta t} \right)$$

Where: C is the specific heat capacity, δT is the temperature rise and δt is the exposure duration, or related to the electrical field in the tissue by

$$\text{SAR} = \frac{\sigma |E|^2}{\rho}$$

Where: σ is the conductivity of the tissue, ρ is the mass density of the tissue and E is the RMS electrical field strength.

However for evaluating SAR of low power transmitter, electrical field measurement is typically applied.

5. SAR Measurement System



Fig 5.1 SPEAG DASY System Configurations

The DASY system for performance compliance tests is illustrated above graphically. This system consists of the following items:

- A standard high precision 6-axis robot with controller, a teach pendant and software
- A data acquisition electronic (DAE) attached to the robot arm extension
- A dosimetric probe equipped with an optical surface detector system
- The electro-optical converter (EOC) performs the conversion between optical and electrical signals
- A measurement server performs the time critical tasks such as signal filtering, control of the robot operation and fast movement interrupts.
- A probe alignment unit which improves the accuracy of the probe positioning
- A computer operating Windows XP
- DASY software
- Remote control with teach pendant and additional circuitry for robot safety such as warning lamps, etc.
- The SAM twin phantom
- A device holder
- Tissue simulating liquid
- Dipole for evaluating the proper functioning of the system

Component details are described in in the following sub-sections.

5.1 E-Field Probe

The SAR measurement is conducted with the dosimetric probe (manufactured by SPEAG). The probe is specially designed and calibrated for use in liquid with high permittivity. The dosimetric probe has special calibration in liquid at different frequency. This probe has a built in optical surface detection system to prevent from collision with phantom.

5.1.1 E-Field Probe Specification

<EX3DV4 Probe>

Construction	Symmetrical design with triangular core Built-in shielding against static charges PEEK enclosure material (resistant to organic solvents, e.g., DGBE)
Frequency	10 MHz to 6 GHz; Linearity: ± 0.2 dB
Directivity	± 0.3 dB in HSL (rotation around probe axis) ± 0.5 dB in tissue material (rotation normal to probe axis)
Dynamic Range	10 μ W/g to 100 mW/g; Linearity: ± 0.2 dB (noise: typically $< 1 \mu$ W/g)
Dimensions	Overall length: 330 mm (Tip: 20 mm) Tip diameter: 2.5 mm (Body: 12 mm) Typical distance from probe tip to dipole centers: 1 mm

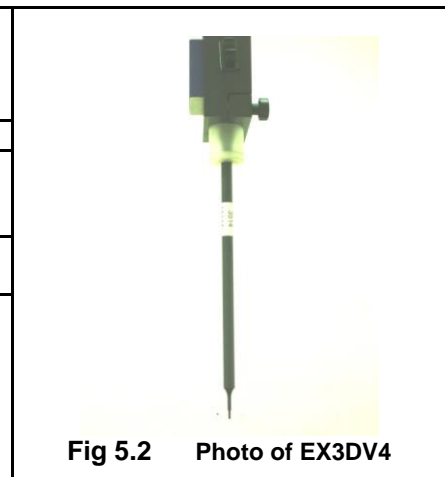


Fig 5.2 Photo of EX3DV4

5.1.2 E-Field Probe Calibration

Each probe needs to be calibrated according to a dosimetric assessment procedure with accuracy better than $\pm 10\%$. The spherical isotropy shall be evaluated and within ± 0.25 dB. The sensitivity parameters (NormX, NormY, and NormZ), the diode compression parameter (DCP) and the conversion factor (ConvF) of the probe are tested. The calibration data can be referred to appendix C of this report.

5.2 Data Acquisition Electronics (DAE)

The data acquisition electronics (DAE) consists of a highly sensitive electrometer-grade preamplifier with auto-zeroing, a channel and gain-switching multiplexer, a fast 16 bit AD-converter and a command decoder and control logic unit. Transmission to the measurement server is accomplished through an optical downlink for data and status information as well as an optical uplink for commands and the clock. The input impedance of the DAE is 200 MOhm; the inputs are symmetrical and floating. Common mode rejection is above 80 dB.



Fig 5.3 Photo of DAE

5.3 Robot

The SPEAG DASY system uses the high precision robots (DASY5: TX90XL) type from Stäubli SA (France). For the 6-axis controller system, the robot controller version (DASY5: CS8c) from Stäubli is used. The Stäubli robot series have many features that are important for our application:

- High precision (repeatability ± 0.035 mm)
- High reliability (industrial design)
- Jerk-free straight movements
- Low ELF interference (the closed metallic construction shields against motor control fields)



Fig 5.4 Photo of DASY5

5.4 Measurement Server

The measurement server is based on a PC/104 CPU board with CPU (DASY5: 400 MHz, Intel Celeron), chipdisk (DASY5: 128 MB), RAM (DASY5: 128 MB). The necessary circuits for communication with the DAE electronic box, as well as the 16 bit AD converter system for optical detection and digital I/O interface are contained on the DASY I/O board, which is directly connected to the PC/104 bus of the CPU board.

The measurement server performs all the real-time data evaluation for field measurements and surface detection, controls robot movements and handles safety operations.



Fig 5.5 Photo of Server for DASY5

5.5 Phantom

<SAM Twin Phantom>

Shell Thickness	2 ± 0.2 mm; Center ear point: 6 ± 0.2 mm
Filling Volume	Approx. 25 liters
Dimensions	Length: 1000 mm; Width: 500 mm; Height: adjustable feet
Measurement Areas	Left Hand, Right Hand, Flat Phantom



Fig 5.6 Photo of SAM Phantom

The bottom plate contains three pair of bolts for locking the device holder. The device holder positions are adjusted to the standard measurement positions in the three sections. A white cover is provided to tap the phantom during off-periods to prevent water evaporation and changes in the liquid parameters. On the phantom top, three reference markers are provided to identify the phantom position with respect to the robot.

5.6 Device Holder

<Device Holder for SAM Twin Phantom>

The SAR in the phantom is approximately inversely proportional to the square of the distance between the source and the liquid surface. For a source at 5 mm distance, a positioning uncertainty of ± 0.5 mm would produce a SAR uncertainty of ± 20 %. Accurate device positioning is therefore crucial for accurate and repeatable measurements. The positions in which the devices must be measured are defined by the standards.

The DASY device holder is designed to cope with different positions given in the standard. It has two scales for the device rotation (with respect to the body axis) and the device inclination (with respect to the line between the ear reference points). The rotation center for both scales is the ear reference point (ERP). Thus the device needs no repositioning when changing the angles.

The DASY device holder is constructed of low-loss POM material having the following dielectric parameters: relative permittivity $\epsilon = 3$ and loss tangent $\delta = 0.02$. The amount of dielectric material has been reduced in the closest vicinity of the device, since measurements have suggested that the influence of the clamp on the test results could thus be lowered.



Fig 5.7 Device Holder

5.7 Data Storage and Evaluation

5.7.1 Data Storage

The DASY software stores the assessed data from the data acquisition electronics as raw data (in microvolt readings from the probe sensors), together with all the necessary software parameters for the data evaluation (probe calibration data, liquid parameters and device frequency and modulation data) in measurement files. The post-processing software evaluates the desired unit and format for output each time the data is visualized or exported. This allows verification of the complete software setup even after the measurement and allows correction of erroneous parameter settings. For example, if a measurement has been performed with an incorrect crest factor parameter in the device setup, the parameter can be corrected afterwards and the data can be reevaluated.

The measured data can be visualized or exported in different units or formats, depending on the selected probe type (e.g., [V/m], [A/m], [mW/g]). Some of these units are not available in certain situations or give meaningless results, e.g., a SAR-output in a non-lose media, will always be zero. Raw data can also be exported to perform the evaluation with other software packages.

5.7.2 Data Evaluation

The DASY post-processing software (SEMCAD) automatically executes the following procedures to calculate the field units from the microvolt readings at the probe connector. The parameters used in the evaluation are stored in the configuration modules of the software :

Probe parameters :	- Sensitivity	Norm _i , a _{i0} , a _{i1} , a _{i2}
	- Conversion factor	ConvF _i
	- Diode compression point	dcp _i
Device parameters :	- Frequency	f
	- Crest factor	cf
Media parameters :	- Conductivity	σ
	- Density	ρ

These parameters must be set correctly in the software. They can be found in the component documents or they can be imported into the software from the configuration files issued for the DASY components. In the direct measuring mode of the multi-meter option, the parameters of the actual system setup are used. In the scan visualization and export modes, the parameters stored in the corresponding document files are used.

The first step of the evaluation is a linearization of the filtered input signal to account for the compression characteristics of the detector diode. The compensation depends on the input signal, the diode type and the DC-transmission factor from the diode to the evaluation electronics. If the exciting field is pulsed, the crest factor of the signal must be known to correctly compensate for peak power.

The formula for each channel can be given as :

$$V_i = U_i + U_i^2 \cdot \frac{cf}{dcp_i}$$

with V_i = compensated signal of channel i, (i = x, y, z)
 U_i = input signal of channel i, (i = x, y, z)
 cf = crest factor of exciting field (DASY parameter)
 dcp_i = diode compression point (DASY parameter)

From the compensated input signals, the primary field data for each channel can be evaluated :

$$\text{E-field Probes : } E_i = \sqrt{\frac{V_i}{\text{Norm}_i \cdot \text{ConvF}}}$$

$$\text{H-field Probes : } H_i = \sqrt{V_i \cdot \frac{a_{i0} + a_{i1}f + a_{i2}f^2}{f}}$$

with V_i = compensated signal of channel i, (i = x, y, z)
 Norm_i = sensor sensitivity of channel i, (i = x, y, z), $\mu\text{V}/(\text{V/m})^2$ for E-field Probes
 ConvF = sensitivity enhancement in solution
 a_{ij} = sensor sensitivity factors for H-field probes
 f = carrier frequency [GHz]
 E_i = electric field strength of channel i in V/m
 H_i = magnetic field strength of channel i in A/m

The RSS value of the field components gives the total field strength (Hermitian magnitude) :

$$E_{\text{tot}} = \sqrt{E_x^2 + E_y^2 + E_z^2}$$

The primary field data are used to calculate the derived field units.

$$\text{SAR} = E_{\text{tot}}^2 \cdot \frac{\sigma}{\rho \cdot 1000}$$

with SAR = local specific absorption rate in mW/g
 E_{tot} = total field strength in V/m
 σ = conductivity in [mho/m] or [Siemens/m]
 ρ = equivalent tissue density in g/cm^3

Note that the density is set to 1, to account for actual head tissue density rather than the density of the tissue simulating liquid.



5.8 Test Equipment List

Manufacturer	Name of Equipment	Type/Model	Serial Number	Calibration	
				Last Cal.	Due Date
SPEAG	835MHz System Validation Kit	D835V2	4d151	Mar. 25, 2013	Mar. 24, 2014
SPEAG	1900MHz System Validation Kit	D1900V2	5d170	Mar. 27, 2013	Mar. 26, 2014
SPEAG	2450MHz System Validation Kit	D2450V2	908	Mar. 26, 2013	Mar. 25, 2014
SPEAG	Data Acquisition Electronics	DAE4	1358	Apr. 08, 2013	Apr. 07, 2014
SPEAG	Dosimetric E-Field Probe	EX3DV4	3911	Apr. 11, 2013	Apr. 10, 2014
SPEAG	SAM Twin Phantom	QD 000 P40 CD	TP-1753	NCR	NCR
SPEAG	SAM Twin Phantom	QD 000 P40 CD	TP-1754	NCR	NCR
Agilent	Dielectric Probe Kit	85070E	MY44300751	NCR	NCR
SPEAG	Phone Positioner	N/A	N/A	NCR	NCR
Agilent	Wireless Communication Test Set	E5515C	MY52102600	Nov. 17, 2013	Nov. 16, 2014
Agilent	ENA Series Network Analyzer	E5071C	MY46111157	Apr. 22, 2013	Apr. 21, 2014
Anritsu	Power Meter	ML2495A	1218010	Mar. 28, 2013	Mar. 27, 2014
Anritsu	Power Sensor	MA2411B	1207253	Mar. 28, 2013	Mar. 27, 2014
Agilent	Dual Directional Coupler	778D	50422	Note 2	
Woken	Attenuator 1	WK0602-XX	N/A	Note 2	
PE	Attenuator 2	PE7005-10	N/A	Note 2	
PE	Attenuator 3	PE7005- 3	N/A	Note 2	
AR	Power Amplifier	5S1G4M2	328767	Note 3	
R&S	Spectrum Analyzer	FSP7	101230	Aug. 14, 2013	Aug. 13, 2014

Table 5.1 Test Equipment List

Note:

1. The calibration certificate of DASy can be referred to appendix C of this report.
2. The Insertion Loss calibration of Dual Directional Coupler and Attenuator were characterized via the network analyzer and compensated during system check.
3. In system check we need to monitor the level on the power meter, and adjust the power amplifier level to have precise power level to the dipole; the measured SAR will be normalized to 1W input power according to the ratio of 1W to the input power to the dipole. For system check, the calibration of the power amplifier is deemed not critically required for correct measurement; the power meter is critical and we do have calibration for it
4. Attenuator 1 insertion loss is calibrated by the network Analyzer, which the calibration is valid, before system check.

6. Tissue Simulating Liquids

For the measurement of the field distribution inside the SAM phantom with DASY, the phantom must be filled with around 25 liters of homogeneous body tissue simulating liquid. For head SAR testing, the liquid height from the ear reference point (ERP) of the phantom to the liquid top surface is larger than 15 cm, which is shown in Fig. 6.1. For body SAR testing, the liquid height from the center of the flat phantom to the liquid top surface is larger than 15 cm, which is shown in Fig. 6.2.

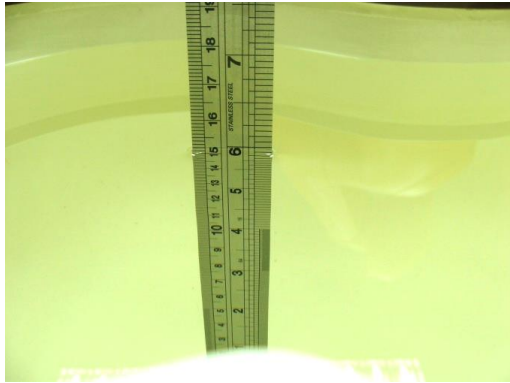


Fig 6.1 Photo of Liquid Height for Head SAR



Fig 6.2 Photo of Liquid Height for Body SAR

The following table gives the recipes for tissue simulating liquid.

Frequency (MHz)	Water (%)	Sugar (%)	Cellulose (%)	Salt (%)	Preventol (%)	DGBE (%)	Conductivity (σ)	Permittivity (ϵ_r)
For Head								
835	40.3	57.9	0.2	1.4	0.2	0	0.90	41.5
1800, 1900, 2000	55.2	0	0	0.3	0	44.5	1.40	40.0
2450	55.0	0	0	0	0	45.0	1.80	39.2
For Body								
835	50.8	48.2	0	0.9	0.1	0	0.97	55.2
1800, 1900, 2000	70.2	0	0	0.4	0	29.4	1.52	53.3
2450	68.6	0	0	0	0	31.4	1.95	52.7

Table 6.1 Recipes of Tissue Simulating Liquid



The dielectric parameters of the liquids were verified prior to the SAR evaluation using an Agilent 85070E Dielectric Probe Kit and an Agilent Network Analyzer.

The following table shows the measuring results for simulating liquid.

Frequency (MHz)	Tissue Type	Liquid Temp. (°C)	Conductivity (σ)	Permittivity (ϵ_r)	Conductivity Target (σ)	Permittivity Target (ϵ_r)	Delta (σ) (%)	Delta (ϵ_r) (%)	Limit (%)	Date
835	Head	22.6	0.913	40.859	0.90	41.5	1.44	-1.54	±5	2014/1/22
1900	Head	22.6	1.446	39.090	1.40	40.0	3.29	-2.27	±5	2014/1/22
2450	Head	22.6	1.810	37.626	1.80	39.2	0.56	-4.02	±5	2014/1/23
835	Body	22.7	0.974	54.111	0.97	55.2	0.41	-1.97	±5	2014/1/22
1900	Body	22.4	1.519	53.569	1.52	53.3	-0.07	0.50	±5	2014/1/21
2450	Body	22.6	1.951	53.859	1.95	52.7	0.05	2.20	±5	2014/1/23

Table 6.2 Measuring Results for Simulating Liquid

7. System Verification Procedures

Each DASY system is equipped with one or more system validation kits. These units, together with the predefined measurement procedures within the DASY software, enable the user to conduct the system performance check and system validation. System validation kit includes a dipole, tripod holder to fix it underneath the flat phantom and a corresponding distance holder.

7.1 Purpose of System Performance check

The system performance check verifies that the system operates within its specifications. System and operator errors can be detected and corrected. It is recommended that the system performance check be performed prior to any usage of the system in order to guarantee reproducible results. The system performance check uses normal SAR measurements in a simplified setup with a well characterized source. This setup was selected to give a high sensitivity to all parameters that might fail or vary over time. The system check does not intend to replace the calibration of the components, but indicates situations where the system uncertainty is exceeded due to drift or failure.

7.2 System Setup

In the simplified setup for system evaluation, the EUT is replaced by a calibrated dipole and the power source is replaced by a continuous wave that comes from a signal generator. The calibrated dipole must be placed beneath the flat phantom section of the SAM twin phantom with the correct distance holder. The distance holder should touch the phantom surface with a light pressure at the reference marking and be oriented parallel to the long side of the phantom. The equipment setup is shown below:

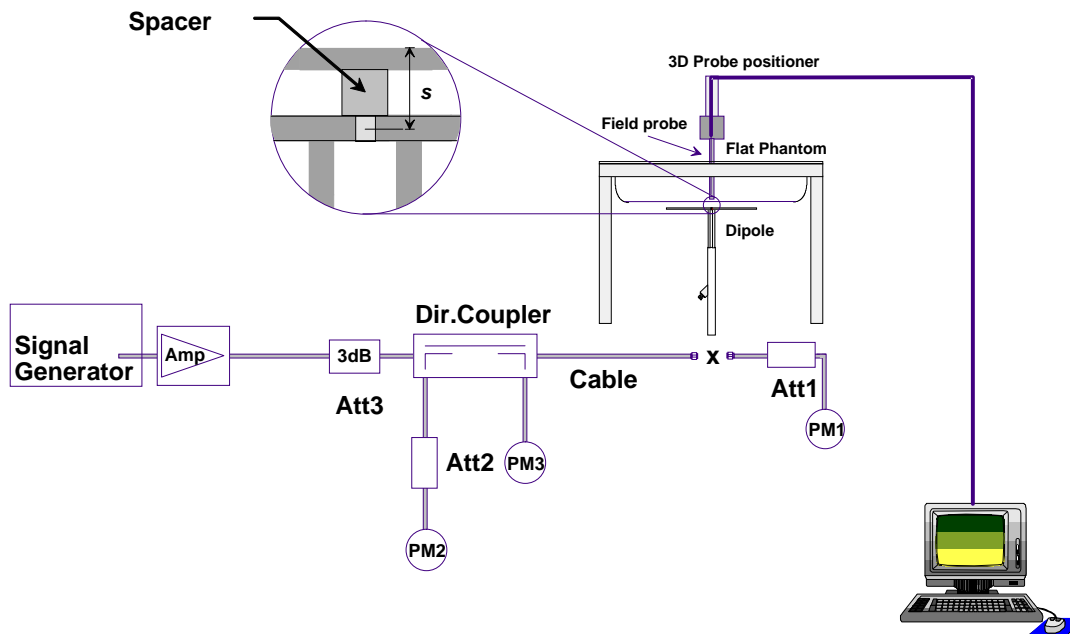


Fig 7.1 System Setup for System Evaluation

1. Signal Generator
2. Amplifier
3. Directional Coupler
4. Power Meter
5. Calibrated Dipole



Fig 7.2 Photo of Dipole Setup

7.3 SAR System Verification Results

Comparing to the original SAR value provided by SPEAG, the verification data should be within its specification of 10 %. Table 7.1 shows the target SAR and measured SAR after normalized to 1W input power. The table below indicates the system performance check can meet the variation criterion and the plots can be referred to Appendix A of this report.

Date	Frequency (MHz)	Tissue Type	Input Power (mW)	Dipole S/N	Probe S/N	DAE S/N	Measured SAR (W/kg)	Targeted SAR (W/kg)	Normalized SAR (W/kg)	Deviation (%)
2014/1/22	835	Head	250	4d151	3911	1358	2.31	9.49	9.24	-2.63
2014/1/22	1900	Head	250	5d170	3911	1358	9.92	40.20	39.68	-1.29
2014/1/23	2450	Head	250	908	3911	1358	13.40	54.00	53.6	-0.74
2014/1/22	835	Body	250	4d151	3911	1358	2.29	9.43	9.16	-2.86
2014/1/21	1900	Body	250	5d170	3911	1358	10.60	41.20	42.4	2.91
2014/1/23	2450	Body	250	908	3911	1358	12.80	50.40	51.2	1.59

Table 7.1 Target and Measurement SAR after Normalized

8. EUT Testing Position

8.1 Define two imaginary lines on the handset

- The vertical centerline passes through two points on the front side of the handset - the midpoint of the width w_t of the handset at the level of the acoustic output, and the midpoint of the width w_b of the bottom of the handset.
- The horizontal line is perpendicular to the vertical centerline and passes through the center of the acoustic output. The horizontal line is also tangential to the face of the handset at point A.
- The two lines intersect at point A. Note that for many handsets, point A coincides with the center of the acoustic output; however, the acoustic output may be located elsewhere on the horizontal line. Also note that the vertical centerline is not necessarily parallel to the front face of the handset, especially for clamshell handsets, handsets with flip covers, and other irregularly shaped handsets.

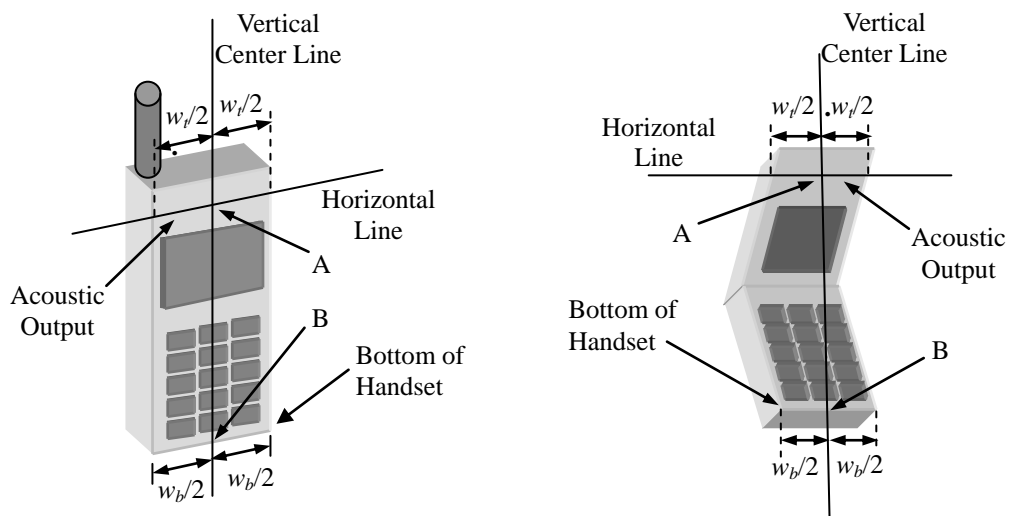


Fig 8.1 Illustration for Handset Vertical and Horizontal Reference Lines

8.2 Cheek Position

- (a) To position the device with the vertical center line of the body of the device and the horizontal line crossing the center piece in a plane parallel to the sagittal plane of the phantom. While maintaining the device in this plane, align the vertical center line with the reference plane containing the three ear and mouth reference point (M: Mouth, RE: Right Ear, and LE: Left Ear) and align the center of the ear piece with the line RE-LE.
- (b) To move the device towards the phantom with the ear piece aligned with the line LE-RE until the phone touched the ear. While maintaining the device in the reference plane and maintaining the phone contact with the ear, move the bottom of the phone until any point on the front side is in contact with the cheek of the phantom or until contact with the ear is lost (see Fig. 8.2).

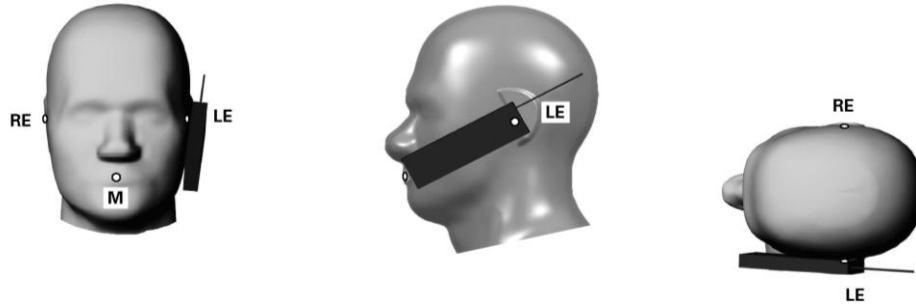


Fig 8.2 Illustration for Cheek Position

8.3 Tilted Position

- (a) To position the device in the “cheek” position described above.
- (b) While maintaining the device the reference plane described above and pivoting against the ear, moves it outward away from the mouth by an angle of 15 degrees or until contact with the ear is lost (see Fig. 8.3).

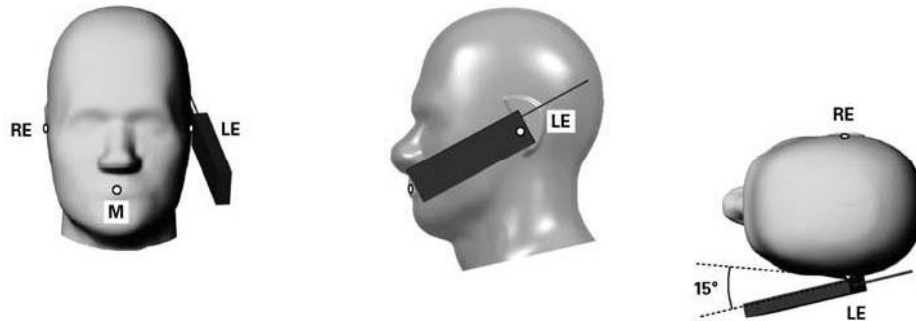


Fig 8.3 Illustration for Tilted Position

8.4 Body Worn Position

- (a) To position the device parallel to the phantom surface with either keypad up or down.
- (b) To adjust the device parallel to the flat phantom.
- (c) To adjust the distance between the device surface and the flat phantom to 1 cm.

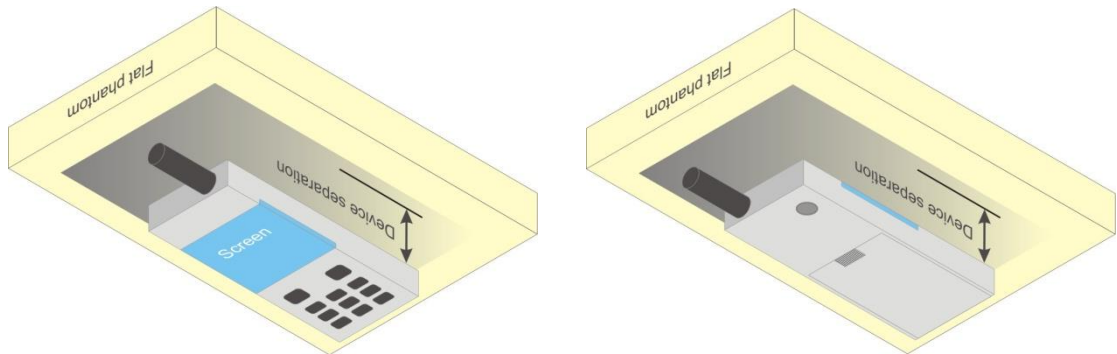


Fig 8.4 Illustration for Body Worn Position

8.5 Hotspot Position

- (a) To position the device parallel to the phantom surface with all sides and either keypad up or down.
- (b) To adjust the device parallel to the flat phantom.
- (c) To adjust the distance between the device and the flat phantom to 1.0cm.

<EUT Setup Photos>

Please refer to Appendix D for the test setup photos.

9. Measurement Procedures

The measurement procedures are as follows:

<Conducted power measurement>

- (a) For WWAN power measurement, use base station simulator to configure EUT WWAN transmission in conducted connection with RF cable, at maximum power in each supported wireless interface and frequency band.
- (b) Read the WWAN RF power level from the base station simulator.
- (c) For WLAN/BT power measurement, use engineering software to configure EUT WLAN/BT continuously transmission, at maximum RF power in each supported wireless interface and frequency band
- (d) Connect EUT RF port through RF cable to the power meter, and measure WLAN/BT output power

<SAR measurement>

- (a) Use base station simulator to configure EUT WWAN transmission in radiated connection, and engineering software to configure EUT WLAN/BT continuously transmission, at maximum RF power, in the highest power channel.
- (b) Place the EUT in the positions as Appendix D demonstrates.
- (c) Set scan area, grid size and other setting on the DASY software.
- (d) Measure SAR results for the highest power channel on each testing position.
- (e) Find out the largest SAR result on these testing positions of each band
- (f) Measure SAR results for other channels in worst SAR testing position if the reported SAR of highest power channel is larger than 0.8 W/kg

According to the test standard, the recommended procedure for assessing the peak spatial-average SAR value consists of the following steps:

- (a) Power reference measurement
- (b) Area scan
- (c) Zoom scan
- (d) Power drift measurement

9.1 Spatial Peak SAR Evaluation

The procedure for spatial peak SAR evaluation has been implemented according to the test standard. It can be conducted for 1g and 10g, as well as for user-specific masses. The DASY software includes all numerical procedures necessary to evaluate the spatial peak SAR value.

The base for the evaluation is a "cube" measurement. The measured volume must include the 1g and 10g cubes with the highest averaged SAR values. For that purpose, the center of the measured volume is aligned to the interpolated peak SAR value of a previously performed area scan.

The entire evaluation of the spatial peak values is performed within the post-processing engine (SEMCAD). The system always gives the maximum values for the 1g and 10g cubes. The algorithm to find the cube with highest averaged SAR is divided into the following stages:

- (a) Extraction of the measured data (grid and values) from the Zoom Scan
- (b) Calculation of the SAR value at every measurement point based on all stored data (A/D values and measurement parameters)
- (c) Generation of a high-resolution mesh within the measured volume
- (d) Interpolation of all measured values from the measurement grid to the high-resolution grid
- (e) Extrapolation of the entire 3-D field distribution to the phantom surface over the distance from sensor to surface
- (f) Calculation of the averaged SAR within masses of 1g and 10g

9.2 Power Reference Measurement

The Power Reference Measurement and Power Drift Measurements are for monitoring the power drift of the device under test in the batch process. The minimum distance of probe sensors to surface determines the closest measurement point to phantom surface. This distance cannot be smaller than the distance of sensor calibration points to probe tip as defined in the probe properties.

9.3 Area & Zoom Scan Procedures

First Area Scan is used to locate the approximate location(s) of the local peak SAR value(s). The measurement grid within an Area Scan is defined by the grid extent, grid step size and grid offset. Next, in order to determine the EM field distribution in a three-dimensional spatial extension, Zoom Scan is required. The Zoom Scan is performed around the highest E-field value to determine the averaged SAR-distribution over 10 g. Area scan and zoom scan resolution setting follows KDB 865664 D01v01r02 quoted below.

When the 1-g SAR of the highest peak is within 2 dB of the SAR limit, additional zoom scans are required for other peaks within 2 dB of the highest peak that have not been included in any zoom scan to ensure there is no increase in SAR.

		≤ 3 GHz	> 3 GHz
Maximum distance from closest measurement point (geometric center of probe sensors) to phantom surface		5 ± 1 mm	$\frac{1}{2} \delta \ln(2) \pm 0.5$ mm
Maximum probe angle from probe axis to phantom surface normal at the measurement location		30° ± 1°	20° ± 1°
Maximum area scan spatial resolution: $\Delta x_{Area}, \Delta y_{Area}$		≤ 2 GHz: ≤ 15 mm 2 – 3 GHz: ≤ 12 mm	3 – 4 GHz: ≤ 12 mm 4 – 6 GHz: ≤ 10 mm
		When the x or y dimension of the test device, in the measurement plane orientation, is smaller than the above, the measurement resolution must be ≤ the corresponding x or y dimension of the test device with at least one measurement point on the test device.	
Maximum zoom scan spatial resolution: $\Delta x_{Zoom}, \Delta y_{Zoom}$		≤ 2 GHz: ≤ 8 mm 2 – 3 GHz: ≤ 5 mm*	3 – 4 GHz: ≤ 5 mm* 4 – 6 GHz: ≤ 4 mm*
Maximum zoom scan spatial resolution, normal to phantom surface	uniform grid: $\Delta z_{Zoom}(n)$	≤ 5 mm	3 – 4 GHz: ≤ 4 mm 4 – 5 GHz: ≤ 3 mm 5 – 6 GHz: ≤ 2 mm
	graded grid	$\Delta z_{Zoom}(1)$: between 1 st two points closest to phantom surface	≤ 4 mm 3 – 4 GHz: ≤ 3 mm 4 – 5 GHz: ≤ 2.5 mm 5 – 6 GHz: ≤ 2 mm
		$\Delta z_{Zoom}(n>1)$: between subsequent points	≤ 1.5 · $\Delta z_{Zoom}(n-1)$
Minimum zoom scan volume	x, y, z	≥ 30 mm	3 – 4 GHz: ≥ 28 mm 4 – 5 GHz: ≥ 25 mm 5 – 6 GHz: ≥ 22 mm
Note: δ is the penetration depth of a plane-wave at normal incidence to the tissue medium; see draft standard IEEE P1528-2011 for details. * When zoom scan is required and the <i>reported</i> SAR from the area scan based 1-g SAR estimation procedures of KDB 447498 is ≤ 1.4 W/kg, ≤ 8 mm, ≤ 7 mm and ≤ 5 mm zoom scan resolution may be applied, respectively, for 2 GHz to 3 GHz, 3 GHz to 4 GHz and 4 GHz to 6 GHz.			

9.4 Volume Scan Procedures

The volume scan is used for assess overlapping SAR distributions for antennas transmitting in different frequency bands. It is equivalent to an oversized zoom scan used in standalone measurements. The measurement volume will be used to enclose all the simultaneous transmitting antennas. For antennas transmitting simultaneously in different frequency bands, the volume scan is measured separately in each frequency band. In order to sum correctly to compute the 1g aggregate SAR, the EUT remain in the same test position for all measurements and all volume scan use the same spatial resolution and grid spacing. When all volume scan were completed, the software, SEMCAD postprocessor can combine and subsequently superpose these measurement data to calculating the multiband SAR.

9.5 SAR Averaged Methods

In DASy, the interpolation and extrapolation are both based on the modified Quadratic Shepard's method. The interpolation scheme combines a least-square fitted function method and a weighted average method which are the two basic types of computational interpolation and approximation.

Extrapolation routines are used to obtain SAR values between the lowest measurement points and the inner phantom surface. The extrapolation distance is determined by the surface detection distance and the probe sensor offset. The uncertainty increases with the extrapolation distance. To keep the uncertainty within 1% for the 1 g and 10 g cubes, the extrapolation distance should not be larger than 5 mm.

9.6 Power Drift Monitoring

All SAR testing is under the EUT install full charged battery and transmit maximum output power. In DASy measurement software, the power reference measurement and power drift measurement procedures are used for monitoring the power drift of EUT during SAR test. Both these procedures measure the field at a specified reference position before and after the SAR testing. The software will calculate the field difference in dB. If the power drifts more than 5%, the SAR will be retested.

10. Bluetooth Exclusions Applied

Mode Band	Average power(dBm)	
	Bluetooth v3.0 + EDR	Bluetooth v4.0 LE
2.4GHz Bluetooth	7	0

Note:

- Per KDB 447498 D01v05r01, the 1-g and 10-g SAR test exclusion thresholds for 100 MHz to 6 GHz at *test separation distances* ≤ 50 mm are determined by:

$$[(\text{max. power of channel, including tune-up tolerance, mW}) / (\text{min. test separation distance, mm})] \cdot [\sqrt{f(\text{GHz})}] \leq 3.0$$
 for 1-g SAR and ≤ 7.5 for 10-g extremity SAR
 - f(GHz) is the RF channel transmit frequency in GHz
 - Power and distance are rounded to the nearest mW and mm before calculation
 - The result is rounded to one decimal place for comparison
 - If the test separation distance (antenna-user) is < 5mm, 5mm is used for excluded SAR calculation

Bluetooth Max Power (dBm)	Test Distance (mm)	Frequency (GHz)	exclusion thresholds
7	0	2.48	1.58

- Per KDB 447498 D01v05r01 exclusion thresholds is 1.58 < 3, RF exposure evaluation is not required.

11. Conducted RF Output Power (Unit: dBm)

<GSM Conducted Power>

Note:

1. Per KDB 447498 D01v05r01, the maximum output power channel is used for SAR testing and for further SAR test reduction.
2. The EUT do not support DTM function.
3. For head SAR testing, the EUT was set in GPRS 4 Tx slots for GSM850 and GSM1900 due to its highest frame-average power.
4. For hotspot SAR testing, the EUT was set in GPRS 4 Tx slots for GSM850 and GSM1900 due to its highest frame-average power.
5. For body worn SAR testing, the EUT was set in GPRS 4 Tx slots for GSM850 and GSM1900 due to their highest frame-average power.

<SIM1>

Band: GSM850	Burst Average Power (dBm)			Frame-Average Power (dBm)		
Channel	128	189	251	128	189	251
Frequency (MHz)	824.2	836.4	848.8	824.2	836.4	848.8
GSM (GMSK, 1 Tx slot)	32.76	32.85	32.92	23.76	23.85	23.92
GPRS (GMSK, 1 Tx slot)	32.75	32.84	32.91	23.75	23.84	23.91
GPRS (GMSK, 2 Tx slots)	30.32	30.31	30.34	24.32	24.31	24.34
GPRS (GMSK, 3 Tx slots)	28.52	28.48	28.49	24.26	24.22	24.23
GPRS (GMSK, 4 Tx slots)	27.51	27.49	27.54	24.51	24.49	24.54
EDGE (8PSK, 1 Tx slot)	27.44	27.23	27.05	18.44	18.23	18.05
EDGE (8PSK, 2 Tx slots)	26.45	26.27	26.14	20.45	20.27	20.14
EDGE (8PSK, 3 Tx slots)	24.48	24.19	24.12	20.22	19.93	19.86
EDGE (8PSK, 4 Tx slots)	23.17	23.04	22.81	20.17	20.04	19.81
Band: GSM1900	Burst Average Power (dBm)			Frame-Average Power (dBm)		
Channel	512	661	810	512	661	810
Frequency (MHz)	1850.2	1880.0	1909.8	1850.2	1880.0	1909.8
GSM (GMSK, 1 Tx slot)	30.38	30.47	30.57	21.38	21.47	21.57
GPRS (GMSK, 1 Tx slot)	30.36	30.44	30.54	21.36	21.44	21.54
GPRS (GMSK, 2 Tx slots)	29.47	29.54	29.71	23.47	23.54	23.71
GPRS (GMSK, 3 Tx slots)	27.70	27.86	27.96	23.44	23.60	23.70
GPRS (GMSK, 4 Tx slots)	26.86	27.04	27.23	23.86	24.04	24.23
EDGE (8PSK, 1 Tx slot)	27.48	27.52	27.30	18.48	18.52	18.30
EDGE (8PSK, 2 Tx slots)	26.52	26.55	26.34	20.52	20.55	20.34
EDGE (8PSK, 3 Tx slots)	24.61	24.74	24.45	20.35	20.48	20.19
EDGE (8PSK, 4 Tx slots)	23.56	23.71	23.40	20.56	20.71	20.40

Remark: The frame-averaged power is linearly scaled the maximum burst averaged power over 8 time slots.

The calculated method are shown as below:

Frame-averaged power = Maximum burst averaged power (1 Tx Slot) - 9 dB

Frame-averaged power = Maximum burst averaged power (2 Tx Slots) - 6 dB

Frame-averaged power = Maximum burst averaged power (3 Tx Slots) - 4.26 dB

Frame-averaged power = Maximum burst averaged power (4 Tx Slots) - 3 dB



<SIM2>

Band: GSM850	Burst Average Power (dBm)			Frame-Average Power (dBm)		
Channel	128	189	251	128	189	251
Frequency (MHz)	824.2	836.4	848.8	824.2	836.4	848.8
GSM (GMSK, 1 Tx slot)	32.91	32.92	32.98	23.91	23.92	23.98
GPRS (GMSK, 1 Tx slot)	32.89	32.90	32.96	23.89	23.90	23.96
GPRS (GMSK, 2 Tx slots)	30.33	30.32	30.35	24.33	24.32	24.35
GPRS (GMSK, 3 Tx slots)	28.54	28.49	28.50	24.28	24.23	24.24
GPRS (GMSK, 4 Tx slots)	27.52	27.50	27.56	24.52	24.50	24.56
EDGE (8PSK, 1 Tx slot)	27.39	27.23	27.03	18.39	18.23	18.03
EDGE (8PSK, 2 Tx slots)	26.44	26.20	26.07	20.44	20.20	20.07
EDGE (8PSK, 3 Tx slots)	24.41	24.17	24.01	20.15	19.91	19.75
EDGE (8PSK, 4 Tx slots)	23.22	23.06	22.87	20.22	20.06	19.87
Band: GSM1900	Burst Average Power (dBm)			Frame-Average Power (dBm)		
Channel	512	661	810	512	661	810
Frequency (MHz)	1850.2	1880.0	1909.8	1850.2	1880.0	1909.8
GSM (GMSK, 1 Tx slot)	30.45	30.53	30.65	21.45	21.53	21.65
GPRS (GMSK, 1 Tx slot)	30.41	30.49	30.58	21.41	21.49	21.58
GPRS (GMSK, 2 Tx slots)	29.61	29.74	29.88	23.61	23.74	23.88
GPRS (GMSK, 3 Tx slots)	27.76	27.90	28.09	23.50	23.64	23.83
GPRS (GMSK, 4 Tx slots)	26.93	27.13	27.30	23.93	24.13	24.30
EDGE (8PSK, 1 Tx slot)	27.49	27.55	27.25	18.49	18.55	18.25
EDGE (8PSK, 2 Tx slots)	26.50	26.57	26.31	20.50	20.57	20.31
EDGE (8PSK, 3 Tx slots)	24.56	24.66	24.44	20.30	20.40	20.18
EDGE (8PSK, 4 Tx slots)	23.52	23.65	23.39	20.52	20.65	20.39

Remark: The frame-averaged power is linearly scaled the maximum burst averaged power over 8 time slots.
The calculated method are shown as below:
Frame-averaged power = Maximum burst averaged power (1 Tx Slot) - 9 dB
Frame-averaged power = Maximum burst averaged power (2 Tx Slots) - 6 dB
Frame-averaged power = Maximum burst averaged power (3 Tx Slots) - 4.26 dB
Frame-averaged power = Maximum burst averaged power (4 Tx Slots) - 3 dB

<WCDMA Conducted Power>

The following tests were conducted according to the test requirements outlines in 3GPP TS 34.121 specification. A summary of these settings are illustrated below:

HSDPA Setup Configuration:

- a. The EUT was connected to Base Station Agilent E5515C referred to the Setup Configuration.
- b. The RF path losses were compensated into the measurements.
- c. A call was established between EUT and Base Station with following setting:
 - i. Set Gain Factors (β_c and β_d) and parameters were set according to each
 - ii. Specific sub-test in the following table, C10.1.4, quoted from the TS 34.121
 - iii. Set RMC 12.2Kbps + HSDPA mode.
 - iv. Set Cell Power = -86 dBm
 - v. Set HS-DSCH Configuration Type to FRC (H-set 1, QPSK)
 - vi. Select HSDPA Uplink Parameters
 - vii. Set Delta ACK, Delta NACK and Delta CQI = 8
 - viii. Set Ack-Nack Repetition Factor to 3
 - ix. Set CQI Feedback Cycle (k) to 4 ms
 - x. Set CQI Repetition Factor to 2
 - xi. Power Ctrl Mode = All Up bits
- d. The transmitted maximum output power was recorded.

Table C.10.1.4: β values for transmitter characteristics tests with HS-DPCCH

Sub-test	β_c	β_d	β_d (SF)	β_c/β_d	β_{HS} (Note 1, Note 2)	CM (dB) (Note 3)	MPR (dB) (Note 3)
1	2/15	15/15	64	2/15	4/15	0.0	0.0
2	12/15 (Note 4)	15/15 (Note 4)	64	12/15 (Note 4)	24/15	1.0	0.0
3	15/15	8/15	64	15/8	30/15	1.5	0.5
4	15/15	4/15	64	15/4	30/15	1.5	0.5

Note 1: $\Delta_{ACK}, \Delta_{NACK}$ and $\Delta_{CQI} = 30/15$ with $\beta_{HS} = 30/15 * \beta_c$.

Note 2: For the HS-DPCCH power mask requirement test in clause 5.2C, 5.7A, and the Error Vector Magnitude (EVM) with HS-DPCCH test in clause 5.13.1A, and HSDPA EVM with phase discontinuity in clause 5.13.1AA, Δ_{ACK} and $\Delta_{NACK} = 30/15$ with $\beta_{HS} = 30/15 * \beta_c$, and $\Delta_{CQI} = 24/15$ with $\beta_{HS} = 24/15 * \beta_c$.

Note 3: CM = 1 for $\beta_c/\beta_d = 12/15, \beta_{HS}/\beta_c = 24/15$. For all other combinations of DPDCH, DPCCH and HS-DPCCH the MPR is based on the relative CM difference. This is applicable for only UEs that support HSDPA in release 6 and later releases.

Note 4: For subtest 2 the β_c/β_d ratio of 12/15 for the TFC during the measurement period (TF1, TF0) is achieved by setting the signalled gain factors for the reference TFC (TF1, TF1) to $\beta_c = 11/15$ and $\beta_d = 15/15$.

Setup Configuration

HSUPA Setup Configuration:

- a. The EUT was connected to Base Station Agilent E5515C referred to the Setup Configuration.
- b. The RF path losses were compensated into the measurements.
- c. A call was established between EUT and Base Station with following setting * :
 - i. Call Configs = 5.2B, 5.9B, 5.10B, and 5.13.2B with QPSK
 - ii. Set the Gain Factors (β_c and β_d) and parameters (AG Index) were set according to each specific sub-test in the following table, C11.1.3, quoted from the TS 34.121
 - iii. Set Cell Power = -86 dBm
 - iv. Set Channel Type = 12.2k + HSPA
 - v. Set UE Target Power
 - vi. Power Ctrl Mode= Alternating bits
 - vii. Set and observe the E-TFCl
 - viii. Confirm that E-TFCl is equal to the target E-TFCl of 75 for sub-test 1, and other subtest's E-TFCl
- d. The transmitted maximum output power was recorded.

Table C.11.1.3: β values for transmitter characteristics tests with HS-DPCCH and E-DCH

Sub-test	β_c	β_d	β_d (SF)	β_c/β_d	β_{HS} (Note 1)	β_{ec}	β_{ed} (Note 5) (Note 6)	β_{ed} (SF)	β_{ed} (Codes)	CM (dB) (Note 2)	MPR (dB) (Note 2)	AG Index (Note 6)	E-TFCl
1	11/15 (Note 3)	15/15 (Note 3)	64	11/15 (Note 3)	22/15	209/225	1309/225	4	1	1.0	0.0	20	75
2	6/15	15/15	64	6/15	12/15	12/15	94/75	4	1	3.0	2.0	12	67
3	15/15	9/15	64	15/9	30/15	30/15	$\beta_{ed1}: 47/15$ $\beta_{ed2}: 47/15$	4	2	2.0	1.0	15	92
4	2/15	15/15	64	2/15	4/15	2/15	56/75	4	1	3.0	2.0	17	71
5	15/15 (Note 4)	15/15 (Note 4)	64	15/15 (Note 4)	30/15	24/15	134/15	4	1	1.0	0.0	21	81

Note 1: $\Delta_{ACK}, \Delta_{NACK}$ and $\Delta_{CQI} = 30/15$ with $\beta_{HS} = 30/15 * \beta_c$.

Note 2: CM = 1 for $\beta_c/\beta_d = 12/15, \beta_{HS}/\beta_c = 24/15$. For all other combinations of DPDCH, DPCCH, HS-DPCCH, E-DPDCH and E-DPCCH the MPR is based on the relative CM difference.

Note 3: For subtest 1 the β_c/β_d ratio of 11/15 for the TFC during the measurement period (TF1, TF0) is achieved by setting the signalled gain factors for the reference TFC (TF1, TF1) to $\beta_c = 10/15$ and $\beta_d = 15/15$.

Note 4: For subtest 5 the β_c/β_d ratio of 15/15 for the TFC during the measurement period (TF1, TF0) is achieved by setting the signalled gain factors for the reference TFC (TF1, TF1) to $\beta_c = 14/15$ and $\beta_d = 15/15$.

Note 5: In case of testing by UE using E-DPDCH Physical Layer category 1, Sub-test 3 is omitted according to TS25.306 Table 5.1g.

Note 6: β_{ed} can not be set directly, it is set by Absolute Grant Value.

Setup Configuration



<WCDMA Conducted Power>

Note:

1. Per KDB 941225 D01v02, RMC 12.2kbps setting is used to evaluate SAR. If AMR 12.2kbps power is < 0.25dB higher than RMC 12.2kbps, SAR tests with AMR 12.2kbps can be excluded.
2. By design, AMR and HSDPA/HSUPA RF power will not be larger than RMC 12.2kbps, detailed information is included in Tune-up Procedure exhibit.
3. It is expected by the manufacturer that MPR for some HSDPA/HSUPA subtests may differ from the specification of 3GPP, according to the chipset implementation in this model. The implementation and expected deviation are detailed in tune-up procedure exhibit.

<SIM1>

Band		WCDMA Band V			WCDMA Band II		
Tx Channel		4132	4182	4233	9262	9400	9538
Rx Channel		4357	4407	4458	9662	9800	9938
Frequency (MHz)		826.4	836.4	846.6	1852.4	1880	1907.6
3GPP Rel 99	AMR	22.25	22.36	22.13	22.38	22.41	22.08
3GPP Rel 99	RMC 12.2Kbps	22.29	22.42	22.15	22.43	22.45	22.11
3GPP Rel 6	HSDPA Subtest-1	20.37	20.48	20.19	20.50	20.54	20.15
3GPP Rel 6	HSDPA Subtest-2	20.38	20.46	20.21	20.52	20.55	20.16
3GPP Rel 6	HSDPA Subtest-3	20.37	20.56	20.20	20.49	20.54	20.14
3GPP Rel 6	HSDPA Subtest-4	20.38	20.45	20.17	20.52	20.53	20.16
3GPP Rel 6	HSUPA Subtest-1	20.46	20.52	20.21	20.64	20.71	20.26
3GPP Rel 6	HSUPA Subtest-2	19.97	20.05	19.43	19.89	20.13	19.78
3GPP Rel 6	HSUPA Subtest-3	20.05	20.26	20.19	20.25	20.34	19.98
3GPP Rel 6	HSUPA Subtest-4	19.87	19.97	19.15	19.82	20.01	19.13
3GPP Rel 6	HSUPA Subtest-5	20.58	20.61	20.32	20.74	20.81	20.31
3GPP MPR specification	MPR result	WCDMA Band V			WCDMA Band II		
0	HSDPA Subtest-1	0.00	0.00	0.00	0.00	0.00	0.00
0	HSDPA Subtest-2	-0.01	0.02	-0.02	-0.02	-0.01	-0.01
≤0.5	HSDPA Subtest-3	0.00	-0.08	-0.01	0.01	0.00	0.01
≤0.5	HSDPA Subtest-4	-0.01	0.03	0.02	-0.02	0.01	-0.01
≤0	HSUPA Subtest-1	0.12	0.09	0.11	0.10	0.10	0.05
≤2	HSUPA Subtest-2	0.61	0.56	0.89	0.85	0.68	0.53
≤1	HSUPA Subtest-3	0.53	0.35	0.13	0.49	0.47	0.33
≤2	HSUPA Subtest-4	0.71	0.64	1.17	0.92	0.80	1.18
≤0	HSUPA Subtest-5	0.00	0.00	0.00	0.00	0.00	0.00



<SIM2>

Band		WCDMA Band V			WCDMA Band II		
Tx Channel		4132	4182	4233	9262	9400	9538
Rx Channel		4357	4407	4458	9662	9800	9938
Frequency (MHz)		826.4	836.4	846.6	1852.4	1880	1907.6
3GPP Rel 99	AMR	22.25	22.38	22.10	22.34	22.41	22.09
3GPP Rel 99	RMC 12.2Kbps	22.31	22.43	22.17	22.44	22.46	22.13
3GPP Rel 6	HSDPA Subtest-1	20.38	20.47	20.22	20.47	20.52	20.13
3GPP Rel 6	HSDPA Subtest-2	20.39	20.45	20.20	20.48	20.53	20.17
3GPP Rel 6	HSDPA Subtest-3	20.36	20.42	20.17	20.45	20.49	20.09
3GPP Rel 6	HSDPA Subtest-4	20.37	20.45	20.18	20.48	20.51	20.12
3GPP Rel 6	HSUPA Subtest-1	20.65	20.74	20.43	20.66	20.71	20.38
3GPP Rel 6	HSUPA Subtest-2	19.78	19.94	19.72	19.89	20.14	19.96
3GPP Rel 6	HSUPA Subtest-3	20.18	20.34	20.07	20.08	20.46	19.88
3GPP Rel 6	HSUPA Subtest-4	19.65	19.84	19.43	19.71	19.84	19.16
3GPP Rel 6	HSUPA Subtest-5	20.49	20.63	20.44	20.59	20.77	20.49
3GPP MPR specification	MPR result	WCDMA Band V			WCDMA Band II		
0	HSDPA Subtest-1	0.00	0.00	0.00	0.00	0.00	0.00
0	HSDPA Subtest-2	-0.01	0.02	0.02	-0.01	-0.01	-0.04
≤0.5	HSDPA Subtest-3	0.02	0.05	0.05	0.02	0.03	0.04
≤0.5	HSDPA Subtest-4	0.01	0.02	0.04	-0.01	0.01	0.01
≤0	HSUPA Subtest-1	-0.16	-0.11	0.01	-0.07	0.06	0.11
≤2	HSUPA Subtest-2	0.71	0.69	0.72	0.70	0.63	0.53
≤1	HSUPA Subtest-3	0.31	0.29	0.37	0.51	0.31	0.61
≤2	HSUPA Subtest-4	0.84	0.79	1.01	0.88	0.93	1.33
≤0	HSUPA Subtest-5	0.00	0.00	0.00	0.00	0.00	0.00

<WLAN 2.4GHz Band Conducted Power>

Note:

1. Per KDB 248227 D01 v01r02, choose the highest output power channel to test SAR and determine further SAR exclusion
2. For each frequency band, testing at higher data rates and higher order modulations is not required when the maximum average output power for each of these configurations is less than 1/4dB higher than those measured at the lowest data rate
3. Apply the test exclusion rule in KDB 248227 D01 v01r02 11g, 11n-HT20 and 11n-HT40 output power is less than 1/4dB higher than 11b mode, thus the SAR can be excluded.

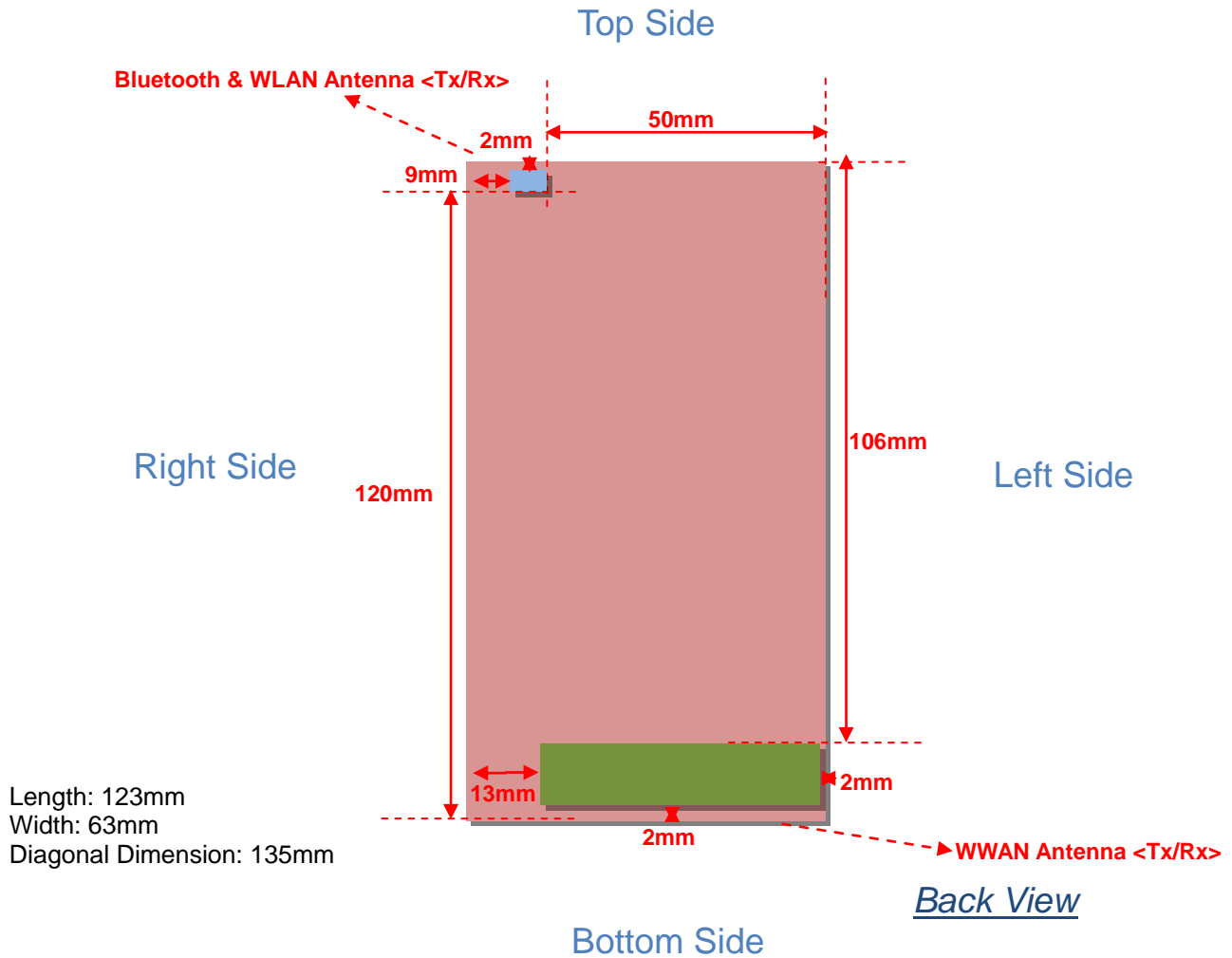
802.11b Average Power (dBm)					
Channel	Frequency (MHz)	Data Rate (bps)			
		1M bps	2M bps	5.5M bps	11M bps
CH 01	2412	16.35	16.33	16.31	16.30
CH 06	2437	16.41	16.39	16.37	16.36
CH 11	2462	16.80	16.78	16.76	16.75

802.11g Average Power (dBm)									
Channel	Frequency (MHz)	Data Rate (bps)							
		6M bps	9M bps	12M bps	18M bps	24M bps	36M bps	48M bps	54M bps
CH 01	2412	12.75	12.58	12.63	12.63	12.70	12.53	12.63	12.58
CH 06	2437	12.62	12.45	12.50	12.50	12.57	12.40	12.50	12.45
CH 11	2462	13.08	12.91	12.96	12.96	13.03	12.86	12.96	12.91

WLAN 2.4GHz Band 802.11n-HT20 Average Power (dBm)									
Channel	Frequency (MHz)	MCS Index							
		MCS0	MCS1	MCS2	MCS3	MCS4	MCS5	MCS6	MCS7
CH 01	2412	12.71	12.67	12.68	12.67	12.61	12.55	12.64	12.65
CH 06	2437	12.80	12.76	12.77	12.76	12.70	12.64	12.73	12.74
CH 11	2462	13.05	13.01	13.02	13.01	12.95	12.89	12.98	12.99

WLAN 2.4GHz Band 802.11n-HT40 Average Power (dBm)									
Channel	Frequency (MHz)	MCS Index							
		MCS0	MCS1	MCS2	MCS3	MCS4	MCS5	MCS6	MCS7
CH 03	2422	10.46	10.37	10.35	10.40	10.43	10.43	10.33	10.35
CH 06	2437	10.55	10.46	10.44	10.49	10.52	10.52	10.42	10.44
CH 09	2452	10.71	10.62	10.60	10.65	10.68	10.68	10.58	10.60

12. Antenna Location



Antennas	Wireless Interface
WWAN Main Antenna (Tx / Rx)	GSM850 GSM1900 WCDMA Band V WCDMA Band II
BT&WLAN Antenna (Tx / Rx)	WLAN 2.4GHz Bluetooth



Distance of the Antenna to the EUT surface/edge						
Antennas	Back	Front	Top Side	Bottom Side	Right Side	Left Side
WWAN Main	≤ 25mm	≤ 25mm	106mm	≤ 25mm	≤ 25mm	≤ 25mm
BT&WLAN	≤ 25mm	≤ 25mm	≤ 25mm	120mm	≤ 25mm	50mm

Positions for SAR tests; Hotspot mode						
Antennas	Back	Front	Top Side	Bottom Side	Right Side	Left Side
WWAN Main	Yes	Yes	No	Yes	Yes	Yes
BT&WLAN	Yes	Yes	Yes	No	Yes	No

Note:

1. Head/Body-worn/Hotspot mode SAR assessments are required.
2. Referring to KDB 941225 D06 v01r01, when the overall device length and width are ≥ 9cm*5cm, the test distance is 10 mm. SAR must be measured for all sides and surfaces with a transmitting antenna located within 25mm from that surface or edge



13. SAR Test Results

Note:

1. Per KDB 447498 D01v05r01, the reported SAR is the measured SAR value adjusted for maximum tune-up tolerance.
 - a. Tune-up scaling Factor = tune-up limit power (mW) / EUT RF power (mW), where tune-up limit is the maximum rated power among all production units.
 - b. Reported SAR(W/kg)= Measured SAR(W/kg)*Tune-up Scaling Factor
2. Per KDB 447498 D01v05r01, for each exposure position, if the highest output channel reported SAR ≤ 0.8 W/kg, other channels SAR testing is not necessary.
3. For Hotspot SAR testing, per KDB 941225 D06v01r01, for EUT dimension ≥ 9 cm*5cm, the test distance is 1cm. SAR must be measured for all surfaces and sides with a transmitting antenna located within 2.5cm from that surface or edge.
4. Per KDB 941225 D02v02r02, RMC 12.2kbps setting is used to evaluate SAR. If HSDPA/HSUPA output power is < 0.25dB higher than RMC12.2Kbps, or reported SAR with RMC 12.2kbps setting is ≤ 1.2 W/kg, HSDPA/HSUPA SAR evaluation can be excluded.
5. According to October 2013TCB Workshop, For GSM/GPRS SAR, the number of time slots to test for SAR should correspond to the highest source-based time-averaged maximum output power configuration, Considering the possibility of 3rd party VoIP in GPRS/EGPRS wireless interface, So we choose GPRS 4Tx for Head SAR testing
6. Per KDB 941225 D06v01r01, when the same wireless modes and device transmission configurations are required for testing body-worn accessories and hotspot mode, it is not necessary to test body-worn accessory SAR for the same device orientation if the test separation distance for hotspot mode is more conservative than that used for body-worn accessories. In this report, the worst exposure position is the back exposure position of the device.
7. Pre KDB648474 D04v01r02, When the reported SAR for a body-worn accessory, measured without a headset connected to the handset, is > 1.2 W/kg, the highest reported SAR configuration for that wireless mode and frequency band should be repeated for that body-worn accessory with a headset attached to the handset .



13.1 Head SAR

<GSM SAR>

Plot No.	Band	Mode	Test Position	Ch.	Freq. (MHz)	Average Power (dBm)	Tune-Up Limit (dBm)	Tune-up Scaling Factor	Power Drift (dB)	Measured 1g SAR (W/kg)	Reported 1g SAR (W/kg)
67	GSM850	GPRS (GMSK 4 Tx slot)	Right Cheek	251	848.8	27.56	28	1.107	0.1	0.462	0.511
68	GSM850	GPRS (GMSK 4 Tx slot)	Right Tilted	251	848.8	27.56	28	1.107	0.02	0.303	0.335
69	GSM850	GPRS (GMSK 4 Tx slot)	Left Cheek	251	848.8	27.56	28	1.107	0.08	0.430	0.476
70	GSM850	GPRS (GMSK 4 Tx slot)	Left Tilted	251	848.8	27.56	28	1.107	-0.02	0.322	0.356
44	GSM1900	GPRS (GMSK 4 Tx slot)	Right Cheek	810	1909.8	27.3	27.5	1.047	0.02	1.010	1.058
45	GSM1900	GPRS (GMSK 4 Tx slot)	Right Tilted	810	1909.8	27.3	27.5	1.047	0.04	0.301	0.315
46	GSM1900	GPRS (GMSK 4 Tx slot)	Left Cheek	810	1909.8	27.3	27.5	1.047	0.09	0.852	0.892
47	GSM1900	GPRS (GMSK 4 Tx slot)	Left Tilted	810	1909.8	27.3	27.5	1.047	-0.08	0.295	0.309
48	GSM1900	GPRS (GMSK 4 Tx slot)	Right Cheek	512	1850.2	26.93	27.5	1.140	0.01	0.809	0.922
49	GSM1900	GPRS (GMSK 4 Tx slot)	Right Cheek	661	1880	27.13	27.5	1.089	-0.1	0.849	0.925
50	GSM1900	GPRS (GMSK 4 Tx slot)	Left Cheek	512	1850.2	26.93	27.5	1.140	0.14	0.742	0.846
51	GSM1900	GPRS (GMSK 4 Tx slot)	Left Cheek	661	1880	27.13	27.5	1.089	0.09	0.786	0.856

<WCDMA SAR>

Plot No.	Band	Mode	Test Position	Ch.	Freq. (MHz)	Average Power (dBm)	Tune-Up Limit (dBm)	Tune-up Scaling Factor	Power Drift (dB)	Measured 1g SAR (W/kg)	Reported 1g SAR (W/kg)
52	WCDMA Band V	RMC 12.2K	Right Cheek	4182	836.4	22.43	23.5	1.279	0.14	0.481	0.615
53	WCDMA Band V	RMC 12.2K	Right Tilted	4182	836.4	22.43	23.5	1.279	0.03	0.288	0.368
54	WCDMA Band V	RMC 12.2K	Left Cheek	4182	836.4	22.43	23.5	1.279	0.06	0.407	0.521
55	WCDMA Band V	RMC 12.2K	Left Tilted	4182	836.4	22.43	23.5	1.279	0.01	0.276	0.353
40	WCDMA Band II	RMC 12.2K	Right Cheek	9400	1880	22.46	23	1.132	0.01	0.698	0.790
41	WCDMA Band II	RMC 12.2K	Right Tilted	9400	1880	22.46	23	1.132	-0.01	0.242	0.274
42	WCDMA Band II	RMC 12.2K	Left Cheek	9400	1880	22.46	23	1.132	0.05	0.546	0.618
43	WCDMA Band II	RMC 12.2K	Left Tilted	9400	1880	22.46	23	1.132	-0.02	0.228	0.258

<WLAN2.4GHz SAR>

Plot No.	Band	Mode	Test Position	Ch.	Freq. (MHz)	Data Rate (bps)	Average Power (dBm)	Tune-Up Limit (dBm)	Tune-up Scaling Factor	Power Drift (dB)	Measured 1g SAR (W/kg)	Reported 1g SAR (W/kg)
71	WLAN 2.4GHz	802.11b	Right Cheek	11	2462	1M	16.8	17	1.047	-0.02	0.847	0.887
72	WLAN 2.4GHz	802.11b	Right Tilted	11	2462	1M	16.8	17	1.047	-0.05	0.850	0.890
73	WLAN 2.4GHz	802.11b	Left Cheek	11	2462	1M	16.8	17	1.047	0.01	1.270	1.330
74	WLAN 2.4GHz	802.11b	Left Tilted	11	2462	1M	16.8	17	1.047	0.01	1.030	1.079
75	WLAN 2.4GHz	802.11b	Right Cheek	1	2412	1M	16.35	17	1.161	-0.03	0.847	0.984
76	WLAN 2.4GHz	802.11b	Right Cheek	6	2437	1M	16.41	17	1.146	0.01	0.903	1.034
77	WLAN 2.4GHz	802.11b	Right Tilted	1	2412	1M	16.35	17	1.161	-0.01	0.816	0.948
78	WLAN 2.4GHz	802.11b	Right Tilted	6	2437	1M	16.41	17	1.146	0.02	0.865	0.991
79	WLAN 2.4GHz	802.11b	Left Cheek	1	2412	1M	16.35	17	1.161	0.01	1.160	1.347
80	WLAN 2.4GHz	802.11b	Left Cheek	6	2437	1M	16.41	17	1.146	0.01	1.260	1.443
81	WLAN 2.4GHz	802.11b	Left Tilted	1	2412	1M	16.35	17	1.161	-0.02	1.000	1.161
82	WLAN 2.4GHz	802.11b	Left Tilted	6	2437	1M	16.41	17	1.146	0.03	1.070	1.226



13.2 Hotspot SAR

<GSM SAR>

Plot No.	Band	Mode	Test Position	Gap (cm)	Ch.	Freq. (MHz)	Average Power (dBm)	Tune-Up Limit (dBm)	Tune-up Scaling Factor	Power Drift (dB)	Measured 1g SAR (W/kg)	Reported 1g SAR (W/kg)
56	GSM850	GPRS (GMSK 4 Tx slot)	Front	1	251	848.8	27.56	28	1.107	-0.02	0.554	0.613
57	GSM850	GPRS (GMSK 4 Tx slot)	Back	1	251	848.8	27.56	28	1.107	-0.01	1.030	1.140
58	GSM850	GPRS (GMSK 4 Tx slot)	Left side	1	251	848.8	27.56	28	1.107	-0.01	0.417	0.461
59	GSM850	GPRS (GMSK 4 Tx slot)	Right side	1	251	848.8	27.56	28	1.107	0.03	0.579	0.641
60	GSM850	GPRS (GMSK 4 Tx slot)	Bottom side	1	251	848.8	27.56	28	1.107	-0.05	0.065	0.072
61	GSM850	GPRS (GMSK 4 Tx slot)	Back	1	128	824.2	27.52	28	1.117	-0.02	0.721	0.805
62	GSM850	GPRS (GMSK 4 Tx slot)	Back	1	189	836.4	27.5	28	1.122	0.01	0.870	0.976
15	GSM1900	GPRS (GMSK 4 Tx slot)	Front	1	810	1909.8	27.3	27.5	1.047	-0.04	0.900	0.942
16	GSM1900	GPRS (GMSK 4 Tx slot)	Back	1	810	1909.8	27.3	27.5	1.047	-0.01	1.410	1.476
17	GSM1900	GPRS (GMSK 4 Tx slot)	Left side	1	810	1909.8	27.3	27.5	1.047	-0.04	0.346	0.362
18	GSM1900	GPRS (GMSK 4 Tx slot)	Right side	1	810	1909.8	27.3	27.5	1.047	0.02	0.215	0.225
19	GSM1900	GPRS (GMSK 4 Tx slot)	Bottom side	1	810	1909.8	27.3	27.5	1.047	-0.07	1.000	1.047
20	GSM1900	GPRS (GMSK 4 Tx slot)	Front	1	512	1850.2	26.93	27.5	1.140	-0.02	0.869	0.991
21	GSM1900	GPRS (GMSK 4 Tx slot)	Front	1	661	1880	27.13	27.5	1.089	-0.01	0.888	0.967
22	GSM1900	GPRS (GMSK 4 Tx slot)	Back	1	512	1850.2	26.93	27.5	1.140	0.03	1.200	1.368
23	GSM1900	GPRS (GMSK 4 Tx slot)	Back	1	661	1880	27.13	27.5	1.089	-0.03	1.300	1.416
27	GSM1900	GPRS (GMSK 4 Tx slot)	Bottom side	1	512	1850.2	26.93	27.5	1.140	-0.02	0.953	1.087
28	GSM1900	GPRS (GMSK 4 Tx slot)	Bottom side	1	661	1880	27.13	27.5	1.089	-0.01	0.946	1.030



<WCDMA SAR>

Plot No.	Band	Mode	Test Position	Gap (cm)	Ch.	Freq. (MHz)	Average Power (dBm)	Tune-Up Limit (dBm)	Tune-up Scaling Factor	Power Drift (dB)	Measured 1g SAR (W/kg)	Reported 1g SAR (W/kg)
33	WCDMA Band V	RMC 12.2K	Front	1	4182	836.4	22.43	23.5	1.279	0.01	0.500	0.640
34	WCDMA Band V	RMC 12.2K	Back	1	4182	836.4	22.43	23.5	1.279	0.01	0.803	1.027
35	WCDMA Band V	RMC 12.2K	Left side	1	4182	836.4	22.43	23.5	1.279	0.01	0.447	0.572
36	WCDMA Band V	RMC 12.2K	Right side	1	4182	836.4	22.43	23.5	1.279	0.02	0.485	0.620
37	WCDMA Band V	RMC 12.2K	Bottom side	1	4182	836.4	22.43	23.5	1.279	-0.11	0.050	0.064
38	WCDMA Band V	RMC 12.2K	Back	1	4132	826.4	22.31	23.5	1.315	-0.01	0.781	1.027
39	WCDMA Band V	RMC 12.2K	Back	1	4233	846.6	22.17	23.5	1.358	-0.01	0.734	0.997
01	WCDMA Band II	RMC 12.2K	Front	1	9400	1880	22.46	23	1.132	-0.03	0.731	0.828
02	WCDMA Band II	RMC 12.2K	Back	1	9400	1880	22.46	23	1.132	-0.01	1.120	1.268
03	WCDMA Band II	RMC 12.2K	Left side	1	9400	1880	22.46	23	1.132	0.02	0.246	0.279
04	WCDMA Band II	RMC 12.2K	Right side	1	9400	1880	22.46	23	1.132	0.08	0.150	0.170
05	WCDMA Band II	RMC 12.2K	Bottom side	1	9400	1880	22.46	23	1.132	-0.01	0.833	0.943
06	WCDMA Band II	RMC 12.2K	Front	1	9262	1852.4	22.44	23	1.138	0.03	0.702	0.799
07	WCDMA Band II	RMC 12.2K	Front	1	9538	1907.6	22.13	23	1.222	0.02	0.642	0.784
08	WCDMA Band II	RMC 12.2K	Back	1	9262	1852.4	22.44	23	1.138	0.06	1.000	1.138
09	WCDMA Band II	RMC 12.2K	Back	1	9538	1907.6	22.13	23	1.222	0.01	1.000	1.222
13	WCDMA Band II	RMC 12.2K	Bottom side	1	9262	1852.4	22.44	23	1.138	0.01	0.808	0.919
14	WCDMA Band II	RMC 12.2K	Bottom side	1	9538	1907.6	22.13	23	1.222	-0.01	0.746	0.911

<WLAN2.4GHz SAR>

Plot No.	Band	Mode	Test Position	Gap (cm)	Ch.	Freq. (MHz)	Data Rate (bps)	Average Power (dBm)	Tune-Up Limit (dBm)	Tune-up Scaling Factor	Power Drift (dB)	Measured 1g SAR (W/kg)	Reported 1g SAR (W/kg)
83	WLAN 2.4GHz	802.11b	Front	1	11	2462	1M	16.8	17	1.047	0.17	0.227	0.238
84	WLAN 2.4GHz	802.11b	Back	1	11	2462	1M	16.8	17	1.047	-0.05	0.174	0.182
85	WLAN 2.4GHz	802.11b	Right Side	1	11	2462	1M	16.8	17	1.047	0.09	0.088	0.092
86	WLAN 2.4GHz	802.11b	Top side	1	11	2462	1M	16.8	17	1.047	0.06	0.285	0.298



13.3 Body Worn SAR

<GSM SAR>

Plot No.	Band	Mode	Test Position	Gap (cm)	Headset	Ch.	Freq. (MHz)	Average Power (dBm)	Tune-Up Limit (dBm)	Tune-up Scaling Factor	Power Drift (dB)	Measured 1g SAR (W/kg)	Reported 1g SAR (W/kg)
56	GSM850	GPRS (GMSK 4 Tx slot)	Front	1	-	251	848.8	27.56	28	1.107	-0.02	0.554	0.613
57	GSM850	GPRS (GMSK 4 Tx slot)	Back	1	-	251	848.8	27.56	28	1.107	-0.01	1.030	1.140
61	GSM850	GPRS (GMSK 4 Tx slot)	Back	1	-	128	824.2	27.52	28	1.117	-0.02	0.721	0.805
62	GSM850	GPRS (GMSK 4 Tx slot)	Back	1	-	189	836.4	27.5	28	1.122	0.01	0.870	0.976
15	GSM1900	GPRS (GMSK 4 Tx slot)	Front	1	-	810	1909.8	27.3	27.5	1.047	-0.04	0.900	0.942
16	GSM1900	GPRS (GMSK 4 Tx slot)	Back	1	-	810	1909.8	27.3	27.5	1.047	-0.01	1.410	1.476
20	GSM1900	GPRS (GMSK 4 Tx slot)	Front	1	-	512	1850.2	26.93	27.5	1.140	-0.02	0.869	0.991
21	GSM1900	GPRS (GMSK 4 Tx slot)	Front	1	-	661	1880	27.13	27.5	1.089	-0.01	0.888	0.967
22	GSM1900	GPRS (GMSK 4 Tx slot)	Back	1	-	512	1850.2	26.93	27.5	1.140	0.03	1.200	1.368
23	GSM1900	GPRS (GMSK 4 Tx slot)	Back	1	-	661	1880	27.13	27.5	1.089	-0.03	1.300	1.416
24	GSM1900	GPRS (GMSK 4 Tx slot)	Back	1	Headset	810	1909.8	27.3	27.5	1.047	-0.02	1.400	1.466
25	GSM1900	GPRS (GMSK 4 Tx slot)	Back	1	Headset	512	1850.2	26.93	27.5	1.140	-0.02	1.220	1.391
26	GSM1900	GPRS (GMSK 4 Tx slot)	Back	1	Headset	661	1880	27.13	27.5	1.089	-0.04	1.290	1.405



<WCDMA SAR>

Plot No.	Band	Mode	Test Position	Gap (cm)	Headset	Ch.	Freq. (MHz)	Average Power (dBm)	Tune-Up Limit (dBm)	Tune-up Scaling Factor	Power Drift (dB)	Measured 1g SAR (W/kg)	Reported 1g SAR (W/kg)
33	WCDMA Band V	RMC 12.2K	Front	1	-	4182	836.4	22.43	23.5	1.279	0.01	0.500	0.640
34	WCDMA Band V	RMC 12.2K	Back	1	-	4182	836.4	22.43	23.5	1.279	0.01	0.803	1.027
38	WCDMA Band V	RMC 12.2K	Back	1	-	4132	826.4	22.31	23.5	1.315	-0.01	0.781	1.027
39	WCDMA Band V	RMC 12.2K	Back	1	-	4233	846.6	22.17	23.5	1.358	-0.01	0.734	0.997
01	WCDMA Band II	RMC 12.2K	Front	1	-	9400	1880	22.46	23	1.132	-0.03	0.731	0.828
02	WCDMA Band II	RMC 12.2K	Back	1	-	9400	1880	22.46	23	1.132	-0.01	1.120	1.268
06	WCDMA Band II	RMC 12.2K	Front	1	-	9262	1852.4	22.44	23	1.138	0.03	0.702	0.799
07	WCDMA Band II	RMC 12.2K	Front	1	-	9538	1907.6	22.13	23	1.222	0.02	0.642	0.784
08	WCDMA Band II	RMC 12.2K	Back	1	-	9262	1852.4	22.44	23	1.138	0.06	1.000	1.138
09	WCDMA Band II	RMC 12.2K	Back	1	-	9538	1907.6	22.13	23	1.222	0.01	1.000	1.222
10	WCDMA Band II	RMC 12.2K	Back	1	Headset	9400	1880	22.46	23	1.132	-0.05	1.120	1.268
11	WCDMA Band II	RMC 12.2K	Back	1	Headset	9262	1852.4	22.44	23	1.138	0.08	1.020	1.160
12	WCDMA Band II	RMC 12.2K	Back	1	Headset	9538	1907.6	22.13	23	1.222	0.08	0.991	1.211

<WLAN2.4GHz SAR>

Plot No.	Band	Mode	Test Position	Gap (cm)	Headset	Ch.	Freq. (MHz)	Data Rate (bps)	Average Power (dBm)	Tune-Up Limit (dBm)	Tune-up Scaling Factor	Power Drift (dB)	Measured 1g SAR (W/kg)	Reported 1g SAR (W/kg)
83	WLAN 2.4GHz	802.11b	Front	1	-	11	2462	1M	16.8	17	1.047	0.17	0.227	0.238
84	WLAN 2.4GHz	802.11b	Back	1	-	11	2462	1M	16.8	17	1.047	-0.05	0.174	0.182
87	WLAN 2.4GHz	802.11b	Back	1	Headset	11	2462	1M	16.8	17	1.047	0.09	0.144	0.151



13.4 Repeated SAR Measurement

Plot No.	Band	Mode	Test Position	Gap (cm)	Ch.	Freq. (MHz)	Average Power (dBm)	Tune-Up Limit (dBm)	Scaling Factor	Power Drift (dB)	Measured 1g SAR (W/kg)	Ratio	Reported 1g SAR (W/kg)
73	WLAN 2.4GHz	802.11b	Left Cheek	-	11	2462	16.8	17	1.047	0.01	1.270	1	1.330
88	WLAN 2.4GHz	802.11b	Left Cheek	-	11	2462	16.8	17	1.047	-0.05	1.250	1.02	1.309
57	GSM850	GPRS (GMSK 4 Tx slot)	Back	1	251	848.8	27.56	28	1.107	-0.01	1.030	1	1.140
66	GSM850	GPRS (GMSK 4 Tx slot)	Back	1	251	848.8	27.56	28	1.107	-0.02	0.999	1.03	1.106
16	GSM1900	GPRS (GMSK 4 Tx slot)	Back	1	810	1909.8	27.3	27.5	1.047	-0.01	1.410	1	1.476
32	GSM1900	GPRS (GMSK 4 Tx slot)	Back	1	810	1909.8	27.3	27.5	1.047	-0.01	1.400	1.01	1.466

Note:

1. Per KDB 865664 D01v01r02, for each frequency band, repeated SAR measurement is required only when the measured SAR is $\geq 0.8W/kg$
2. Per KDB 865664 D01v01r02, if the ratio among the repeated measurement is ≤ 1.2 and the measured SAR $< 1.45W/kg$, only one repeated measurement is required.
3. The ratio is the largest SAR to the smallest SAR among original and repeated measurement.
4. All measurement SAR result is scaled-up to account for tune-up tolerance and is compliant.

13.5 Highest SAR Plot

TestLaboratory: Sporton International Inc. SAR/HAC TestingLab

Date: 2014.01.22

57 GSM850_GPRS (GMSK 4 Tx slot)_Back_1.0cm_Ch251

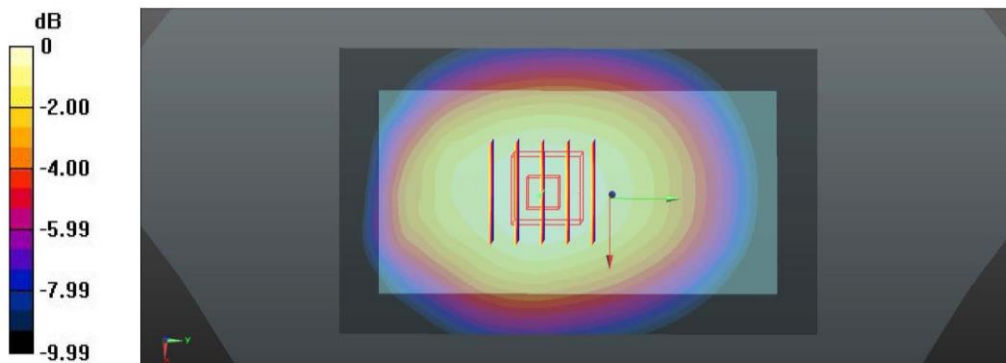
Communication System: GPRS/EDGE (4 Tx slot);Frequency: 848.8 MHz;Duty Cycle: 1:2.08
 Medium: MSL_835_140122 Medium parameters used: $f = 848.8 \text{ MHz}$; $\sigma = 0.987 \text{ S/m}$; $\epsilon_r = 53.983$; $\rho = 1000 \text{ kg/m}^3$
 Ambient Temperature: 23.6 °C; Liquid Temperature : 22.7 °C

DASY5 Configuration:

- Probe: EX3DV4 - SN3911; ConvF(9.93, 9.93, 9.93); Calibrated: 2013.04.11;
- Sensor-Surface: 2mm (Mechanical Surface Detection)
- Electronics: DAE4 Sn1358; Calibrated: 2013.04.08
- Phantom: SAM 2; Type: QD 000 P40 C; Serial: TP-1754
- Measurement SW: DASY52, Version 52.8 (6); SEMCAD X Version 14.6.9 (7117)

Ch251/Area Scan (61x101x1): Interpolated grid: dx=15mm, dy=15mm
 Maximum value of SAR (interpolated) = 1.20 W/kg

Ch251/Zoom Scan (5x5x7)/Cube 0: Measurement grid: dx=8mm, dy=8mm, dz=5mm
 Reference Value = 32.296 V/m; Power Drift = -0.01 dB
 Peak SAR (extrapolated) = 1.31 W/kg
SAR(1 g) = 1.030 W/kg; SAR(10 g) = 0.770 W/kg
 Maximum value of SAR (measured) = 1.19 W/kg



0 dB = 1.19 W/kg

TestLaboratory: Sporton International Inc. SAR/HAC TestingLab

Date: 2014.01.21

16 GSM1900_GPRS (GMSK 4 Tx slot)_Back_1.0cm_Ch810

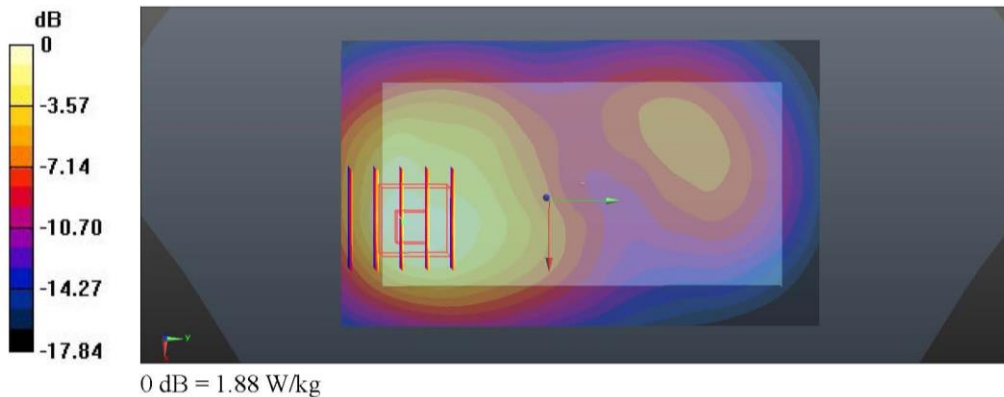
Communication System: GPRS/EDGE (4 Tx slot); Frequency: 1909.8 MHz; Duty Cycle: 1:2.08
 Medium: MSL_1900_140121 Medium parameters used: $f = 1909.8 \text{ MHz}$; $\sigma = 1.529 \text{ S/m}$; $\epsilon_r = 53.552$;
 $\rho = 1000 \text{ kg/m}^3$
 Ambient Temperature: $23.5 \text{ }^\circ\text{C}$; Liquid Temperature : $22.4 \text{ }^\circ\text{C}$

DASY5 Configuration:

- Probe: EX3DV4 - SN3911; ConvF(7.7, 7.7, 7.7); Calibrated: 2013.04.11;
- Sensor-Surface: 2mm (Mechanical Surface Detection)
- Electronics: DAE4 Sn1358; Calibrated: 2013.04.08
- Phantom: SAM 2; Type: QD 000 P40 C; Serial: TP-1754
- Measurement SW: DASY52, Version 52.8 (6); SEMCAD X Version 14.6.9 (7117)

Ch810/Area Scan (61x101x1): Interpolated grid: $dx=15\text{mm}$, $dy=15\text{mm}$
 Maximum value of SAR (interpolated) = 1.93 W/kg

Ch810/Zoom Scan (5x5x7)/Cube 0: Measurement grid: $dx=8\text{mm}$, $dy=8\text{mm}$, $dz=5\text{mm}$
 Reference Value = 10.994 V/m ; Power Drift = -0.01 dB
 Peak SAR (extrapolated) = 2.35 W/kg
SAR(1 g) = 1.410 W/kg ; SAR(10 g) = 0.810 W/kg
 Maximum value of SAR (measured) = 1.88 W/kg



TestLaboratory: Sporton International Inc. SAR/HAC TestingLab

Date: 2014.01.22

34 WCDMA Band V_RMC12.2K_Back_1.0cm_Ch4182

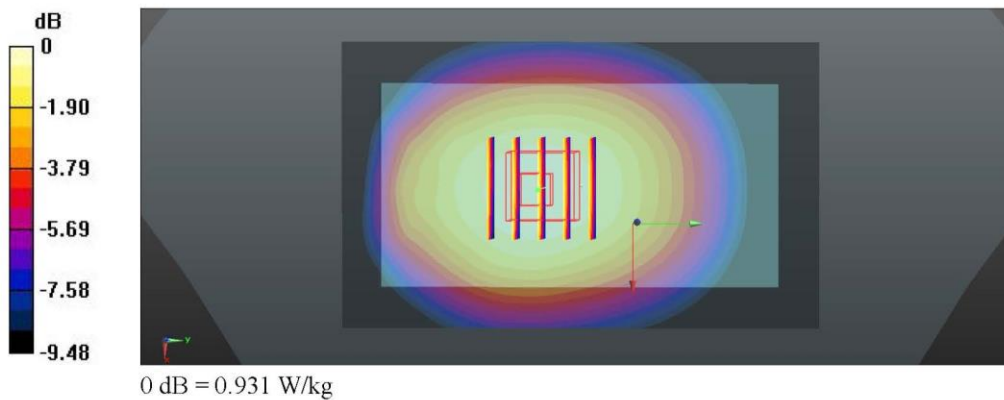
Communication System: WCDMA; Frequency: 836.4 MHz; Duty Cycle: 1:1
 Medium: MSL_835_140122 Medium parameters used: $f = 836.4 \text{ MHz}$; $\sigma = 0.975 \text{ S/m}$; $\epsilon_r = 54.1$; $\rho = 1000 \text{ kg/m}^3$
 Ambient Temperature: $23.6 \text{ }^\circ\text{C}$; Liquid Temperature : $22.7 \text{ }^\circ\text{C}$

DASY5 Configuration:

- Probe: EX3DV4 - SN3911; ConvF(9.93, 9.93, 9.93); Calibrated: 2013.04.11;
- Sensor-Surface: 2mm (Mechanical Surface Detection)
- Electronics: DAE4 Sn1358; Calibrated: 2013.04.08
- Phantom: SAM 2; Type: QD 000 P40 C; Serial: TP-1754
- Measurement SW: DASY52, Version 52.8 (6); SEMCAD X Version 14.6.9 (7117)

Ch4182/Area Scan (61x101x1): Interpolated grid: $dx=15\text{mm}$, $dy=15\text{mm}$
 Maximum value of SAR (interpolated) = 0.935 W/kg

Ch4182/Zoom Scan (5x5x7)/Cube 0: Measurement grid: $dx=8\text{mm}$, $dy=8\text{mm}$, $dz=5\text{mm}$
 Reference Value = 28.229 V/m ; Power Drift = 0.01 dB
 Peak SAR (extrapolated) = 1.03 W/kg
SAR(1 g) = 0.803 W/kg ; SAR(10 g) = 0.600 W/kg
 Maximum value of SAR (measured) = 0.931 W/kg



TestLaboratory: Sporton International Inc. SAR/HAC TestingLab

Date: 2014.01.21

02 WCDMA Band II_RMC 12.2K_Back_1.0cm_Ch9400

Communication System: WCDMA; Frequency: 1880 MHz; Duty Cycle: 1:1
Medium: MSL_1900_140121 Medium parameters used: $f = 1880$ MHz; $\sigma = 1.498$ S/m; $\epsilon_r = 53.575$;
 $\rho = 1000$ kg/m³
Ambient Temperature: 23.5 °C; Liquid Temperature : 22.4 °C

DASY5 Configuration:

- Probe: EX3DV4 - SN3911; ConvF(7.7, 7.7, 7.7); Calibrated: 2013.04.11;
- Sensor-Surface: 2mm (Mechanical Surface Detection)
- Electronics: DAE4 Sn1358; Calibrated: 2013.04.08
- Phantom: SAM 2; Type: QD 000 P40 C; Serial: TP-1754
- Measurement SW: DASY52, Version 52.8 (6); SEMCAD X Version 14.6.9 (7117)

Ch9400/Area Scan (61x101x1): Interpolated grid: dx=15mm, dy=15mm

Maximum value of SAR (interpolated) = 1.50 W/kg

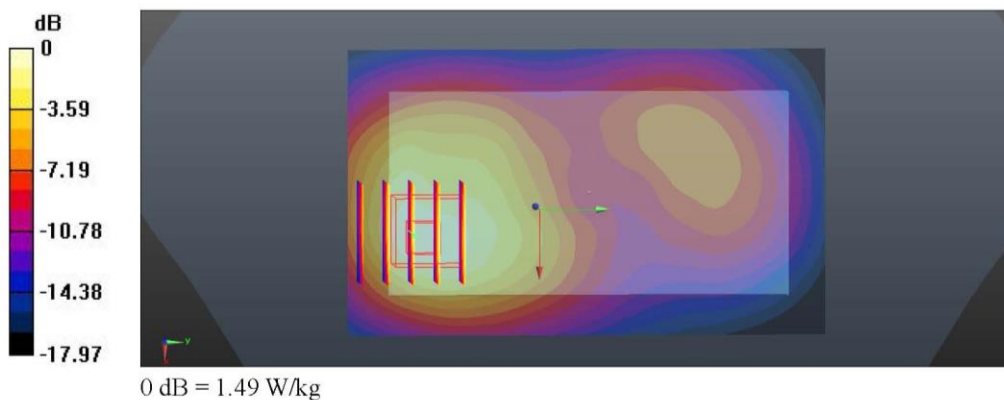
Ch9400/Zoom Scan (5x5x7)/Cube 0: Measurement grid: dx=8mm, dy=8mm, dz=5mm

Reference Value = 10.124 V/m; Power Drift = -0.01 dB

Peak SAR (extrapolated) = 1.84 W/kg

SAR(1 g) = 1.120 W/kg; SAR(10 g) = 0.656 W/kg

Maximum value of SAR (measured) = 1.49 W/kg



TestLaboratory: Sporton International Inc. SAR/HAC TestingLab

Date: 2014.01.23

80 WLAN 2.4GHz_802.11b_Left Cheek_Ch6

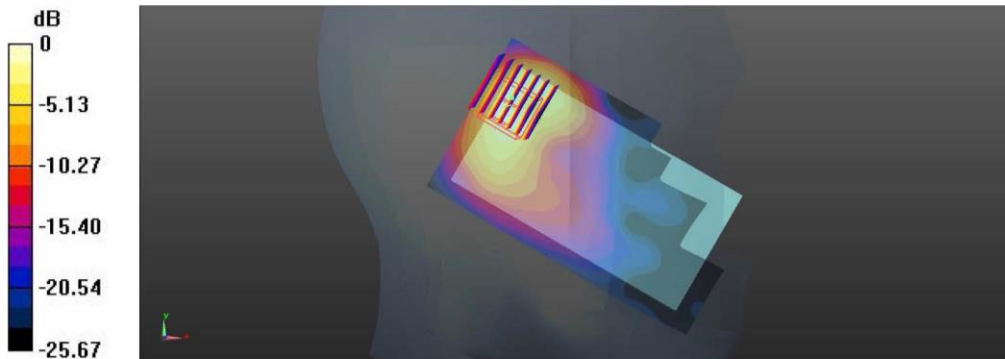
Communication System: 802.11b ;Frequency: 2437 MHz;Duty Cycle: 1:1
 Medium: HSL_2450_140123 Medium parameters used: f = 2437 MHz; $\sigma = 1.796$ S/m; $\epsilon_r = 37.681$;
 $\rho = 1000$ kg/m³
Ambient Temperature: 23.5 °C; Liquid Temperature : 22.6 °C

DASY5 Configuration:

- Probe: EX3DV4 - SN3911; ConvF(7.22, 7.22, 7.22); Calibrated: 2013.04.11;
- Sensor-Surface: 2mm (Mechanical Surface Detection)
- Electronics: DAE4 Sn1358; Calibrated: 2013.04.08
- Phantom: SAM 1; Type: QD 000 P40 C; Serial: TP-1753
- Measurement SW: DASY52, Version 52.8 (6); SEMCAD X Version 14.6.9 (7117)

Ch6/Area Scan (71x121x1): Interpolated grid: dx=12mm, dy=12mm
 Maximum value of SAR (interpolated) = 2.16 W/kg

Ch6/Zoom Scan (7x7x7)/Cube 0: Measurement grid: dx=5mm, dy=5mm, dz=5mm
 Reference Value = 24.839 V/m; Power Drift = 0.01 dB
 Peak SAR (extrapolated) = 3.17 W/kg
SAR(1 g) = 1.260 W/kg; SAR(10 g) = 0.534 W/kg
 Maximum value of SAR (measured) = 2.17 W/kg



0 dB = 2.17 W/kg

14. Simultaneous Transmission Analysis

NO.	Simultaneous Transmission Configurations	Phone			Note
		Head	Body-worn	Hotspot	
1.	GSM(Voice) + WLAN2.4GHz(data)	Yes	Yes		
2.	WCDMA(Voice) + WLAN2.4GHz(data)	Yes	Yes		
3.	GSM(Voice) + Bluetooth(data)	Yes	Yes		
4.	WCDMA((Voice) + Bluetooth(data)	Yes	Yes		
5.	GPRS/EDGE(Data) + WLAN2.4GHz(data)	Yes	Yes	Yes	2.4GHz Hotspot
6.	WCDMA(Data) + WLAN2.4GHz(data)	Yes	Yes	Yes	2.4GHz Hotspot
7.	GPRS/EDGE(Data) + Bluetooth(data)	Yes	Yes	Yes	Bluetooth Tethering
8.	WCDMA(Data) + Bluetooth(data)	Yes	Yes	Yes	Bluetooth Tethering

Note:

1. WLAN and Bluetooth share the same antenna, and cannot transmit simultaneously.
2. The Reported SAR summation is calculated based on the same configuration and test position.
3. Per KDB 447498 D01v05r01, simultaneous transmission SAR is compliant if,
 - i) Scalar SAR summation < 1.6W/kg.
 - ii) $SPLSR = (SAR_1 + SAR_2)^{1.5} / (min. \text{ separation distance, mm})$, and the peak separation distance is determined from the square root of $[(x_1-x_2)^2 + (y_1-y_2)^2 + (z_1-z_2)^2]$, where (x_1, y_1, z_1) and (x_2, y_2, z_2) are the coordinates of the extrapolated peak SAR locations in the zoom scan
If $SPLSR \leq 0.04$, simultaneously transmission SAR measurement is not necessary
 - iii) Simultaneously transmission SAR measurement, and the reported multi-band SAR < 1.6W/kg
4. For simultaneous transmission analysis, Bluetooth SAR is estimated per KDB 447498 D01v05r01 based on the formula below.
 - i) $(max. \text{ power of channel, including tune-up tolerance, mW}) / (min. \text{ test separation distance, mm}) \cdot [\sqrt{f(\text{GHz})} / x] \text{ W/kg}$ for test separation distances $\leq 50 \text{ mm}$; where $x = 7.5$ for 1-g SAR, and $x = 18.75$ for 10-g SAR.
 - ii) When the minimum test separation distance is < 5mm, the distance is used 5mm to determine SAR test exclusion.
 - iii) 0.4 W/kg for 1-g SAR and 1.0 W/kg for 10-g SAR, when the test separation distances is > 50 mm.

In this report, 50mm separation is applied to conservatively estimate SAR value for separation distance > 50mm

Bluetooth Max Power	Exposure Position	Head	Hotspot	Body worn
	Test separation	0 mm	10 mm	10 mm
7.0 dBm	Estimated SAR (W/kg)	0.210 W/kg	0.105 W/kg	0.105 W/kg



14.1 Head Exposure Conditions

< WWAN + WLAN >

Position	WWAN			WLAN		WWAN+WLAN Summation SAR (W/kg)	SPLSR	Case No
	WWAN Band	Plot No	SAR (W/kg)	Plot No	SAR (W/kg)			
Right Cheek	GSM850	67	0.511	76	1.034	1.55		
	GSM1900	44	1.058	76	1.034	2.09	0.04	#1
	WCDMA Band V	52	0.615	76	1.034	1.65	0.03	#2
	WCDMA Band II	40	0.790	76	1.034	1.82	0.03	#3
Right Tilted	GSM850	68	0.335	78	0.991	1.33		
	GSM1900	45	0.315	78	0.991	1.31		
	WCDMA Band V	53	0.368	78	0.991	1.36		
	WCDMA Band II	41	0.274	78	0.991	1.27		
Left Cheek	GSM850	69	0.476	80	1.443	1.92	0.04	#4
	GSM1900	46	0.892	80	1.443	2.34	0.04	#5
	WCDMA Band V	54	0.521	80	1.443	1.96	0.04	#6
	WCDMA Band II	42	0.618	80	1.443	2.06	0.03	#7
Left Tilted	GSM850	70	0.356	82	1.226	1.58		
	GSM1900	47	0.309	82	1.226	1.54		
	WCDMA Band V	55	0.353	82	1.226	1.58		
	WCDMA Band II	43	0.258	82	1.226	1.48		

< WWAN + Bluetooth >

Position	WWAN			Bluetooth	WWAN+BT Summation SAR (W/kg)	SPLSR	Case No
	WWAN Band	Plot No	SAR (W/kg)	Estimated SAR (W/kg)			
Right Cheek	GSM850	67	0.511	0.210	0.72		
	GSM1900	44	1.058	0.210	1.27		
	WCDMA Band V	52	0.615	0.210	0.83		
	WCDMA Band II	40	0.790	0.210	1.00		
Right Tilted	GSM850	68	0.335	0.210	0.55		
	GSM1900	45	0.315	0.210	0.53		
	WCDMA Band V	53	0.368	0.210	0.58		
	WCDMA Band II	41	0.274	0.210	0.48		
Left Cheek	GSM850	69	0.476	0.210	0.69		
	GSM1900	46	0.892	0.210	1.10		
	WCDMA Band V	54	0.521	0.210	0.73		
	WCDMA Band II	42	0.618	0.210	0.83		
Left Tilted	GSM850	70	0.356	0.210	0.57		
	GSM1900	47	0.309	0.210	0.52		
	WCDMA Band V	55	0.353	0.210	0.56		
	WCDMA Band II	43	0.258	0.210	0.47		



14.2 Hotspot Exposure Conditions

< WWAN + WLAN >

Position	WWAN			WLAN		WWAN+WLAN Summation SAR (W/kg)	SPLSR	Case No
	WWAN Band	Plot No	SAR (W/kg)	Plot No	SAR (W/kg)			
Front	GSM850	56	0.613	83	0.238	0.85		
	GSM1900	20	0.991	83	0.238	1.23		
	WCDMA Band V	33	0.640	83	0.238	0.88		
	WCDMA Band II	01	0.828	83	0.238	1.07		
Back	GSM850	57	1.140	84	0.182	1.32		
	GSM1900	16	1.476	84	0.182	1.66	0.02	#8
	WCDMA Band V	34	1.027	84	0.182	1.21		
	WCDMA Band II	02	1.268	84	0.182	1.45		
Left Side	GSM850	58	0.461			0.46		
	GSM1900	17	0.362			0.36		
	WCDMA Band V	35	0.572			0.57		
	WCDMA Band II	03	0.279			0.28		
Right Side	GSM850	59	0.641	85	0.092	0.73		
	GSM1900	18	0.225	85	0.092	0.32		
	WCDMA Band V	36	0.620	85	0.092	0.71		
	WCDMA Band II	04	0.170	85	0.092	0.17		
Top Side	GSM850			86	0.298	0.30		
	GSM1900			86	0.298	0.30		
	WCDMA Band V			86	0.298	0.30		
	WCDMA Band II			86	0.298	0.30		
Bottom Side	GSM850	60	0.072			0.07		
	GSM1900	27	1.087			1.09		
	WCDMA Band V	37	0.064			0.06		
	WCDMA Band II	05	0.943			0.94		



< WWAN + Bluetooth >

Position	WWAN			Bluetooth	WWAN+BT Summation SAR (W/kg)	SPLSR	Case No
	WWAN Band	Plot No	SAR (W/kg)	Estimated SAR (W/kg)			
Front	GSM850	56	0.613	0.105	0.72		
	GSM1900	20	0.991	0.105	1.10		
	WCDMA Band V	33	0.640	0.105	0.75		
	WCDMA Band II	01	0.828	0.105	0.93		
Back	GSM850	57	1.140	0.105	1.25		
	GSM1900	16	1.476	0.105	1.58		
	WCDMA Band V	34	1.027	0.105	1.13		
	WCDMA Band II	02	1.268	0.105	1.37		
Left Side	GSM850	58	0.461		0.46		
	GSM1900	17	0.362		0.36		
	WCDMA Band V	35	0.572		0.57		
	WCDMA Band II	03	0.279		0.28		
Right Side	GSM850	59	0.641	0.105	0.75		
	GSM1900	18	0.225	0.105	0.33		
	WCDMA Band V	36	0.620	0.105	0.73		
	WCDMA Band II	04	0.170	0.105	0.28		
Top Side	GSM850			0.105	0.11		
	GSM1900			0.105	0.11		
	WCDMA Band V			0.105	0.11		
	WCDMA Band II			0.105	0.11		
Bottom Side	GSM850	60	0.072		0.07		
	GSM1900	27	1.087		1.09		
	WCDMA Band V	37	0.064		0.06		
	WCDMA Band II	05	0.943		0.94		



14.3 Body-Worn Exposure Conditions

< WWAN + WLAN >

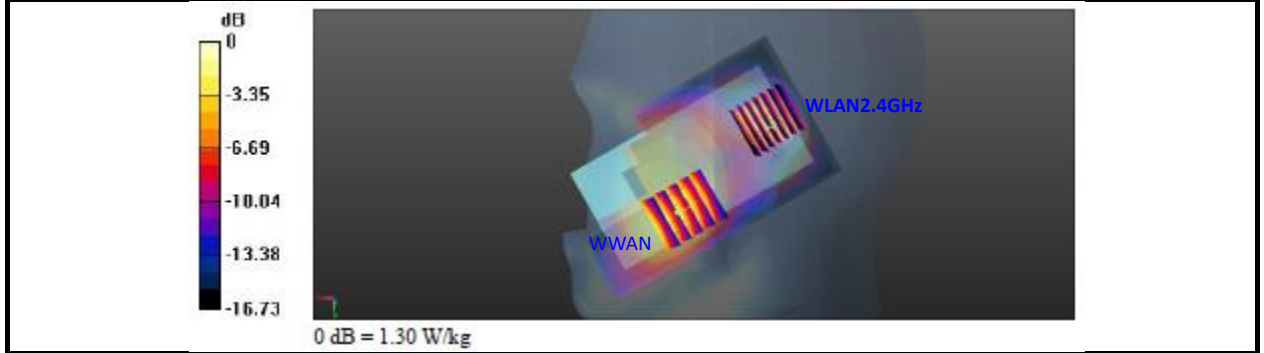
Position	WWAN			WLAN		WWAN+WLAN Summation SAR (W/kg)	SPLSR	Case No
	WWAN Band	Plot No	SAR (W/kg)	Plot No	SAR (W/kg)			
Front	GSM850	56	0.613	83	0.238	0.85		
	GSM1900	20	0.991	83	0.238	1.23		
	WCDMA Band V	33	0.640	83	0.238	0.88		
	WCDMA Band II	01	0.828	83	0.238	1.07		
Back	GSM850	57	1.140	84	0.182	1.32		
	GSM1900	16	1.476	84	0.182	1.66	0.02	#8
	WCDMA Band V	34	1.027	84	0.182	1.21		
	WCDMA Band II	02	1.268	84	0.182	1.45		
Back (w/ Headset)	GSM850			87	0.151	0.15		
	GSM1900	24	1.466	87	0.151	1.62	0.02	#9
	WCDMA Band V			87	0.151	0.15		
	WCDMA Band II	10	1.268	87	0.151	1.42		

< WWAN + Bluetooth >

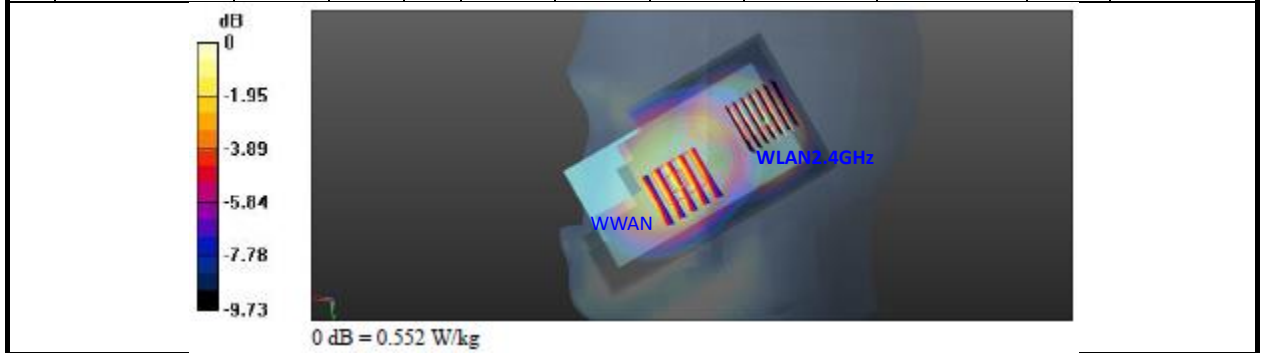
Position	WWAN			Bluetooth	WWAN+BT Summation SAR (W/kg)	SPLSR	Case No
	WWAN Band	Plot No	SAR (W/kg)	Estimated SAR (W/kg)			
Front	GSM850	56	0.613	0.105	0.72		
	GSM1900	20	0.991	0.105	1.10		
	WCDMA Band V	33	0.640	0.105	0.75		
	WCDMA Band II	01	0.828	0.105	0.93		
Back	GSM850	57	1.140	0.105	1.25		
	GSM1900	16	1.476	0.105	1.58		
	WCDMA Band V	34	1.027	0.105	1.13		
	WCDMA Band II	02	1.268	0.105	1.37		
Back (w/ Headset)	GSM850			0.105	0.11		
	GSM1900	24	1.466	0.105	1.57		
	WCDMA Band V			0.105	0.11		
	WCDMA Band II	10	1.268	0.105	1.37		

14.4 SPLSR Evaluation and Analysis

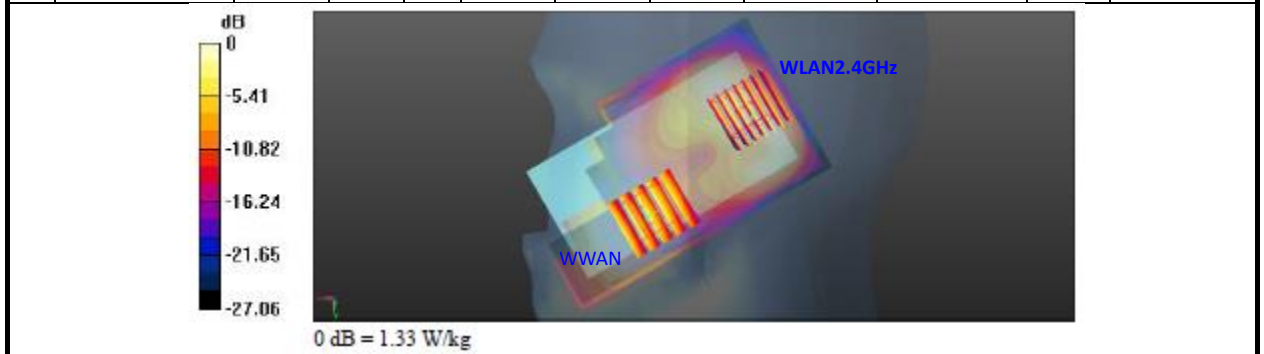
Plot No #1	Band	Position	SAR (W/kg)	Gap (cm)	SAR peak location (m)			3D distance (mm)	Pair SAR sum (W/kg)	SPLSR	Simultaneous SAR
					X	Y	Z				
44	GSM1900	Right Cheek	1.058	0	0.0713	-0.255	-0.171	75.8	2.09	0.04	Not required
76	WLAN 2.4GHz		1.034	0	0.0135	-0.304	-0.171				

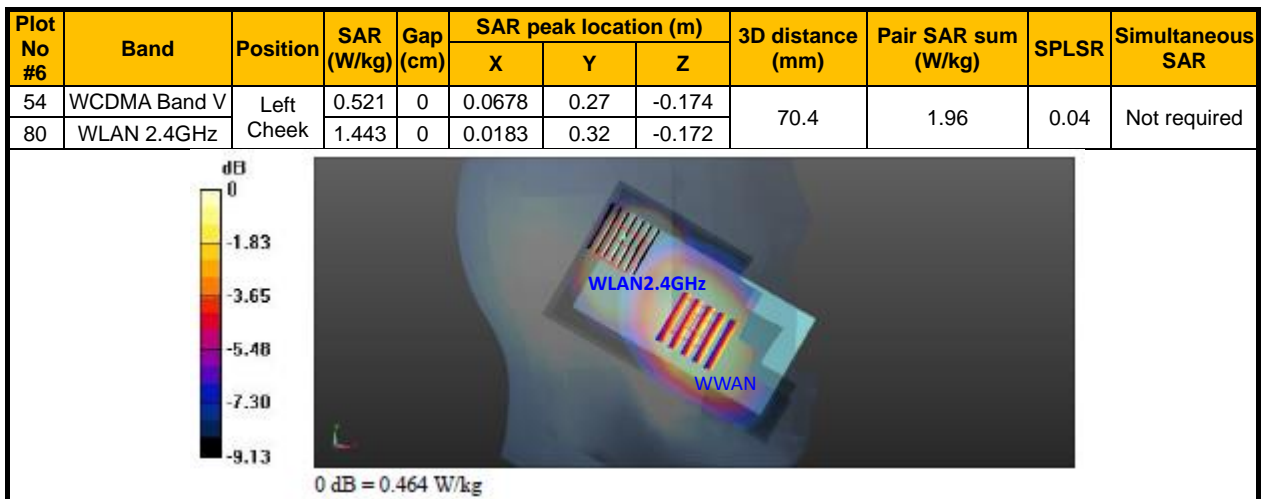
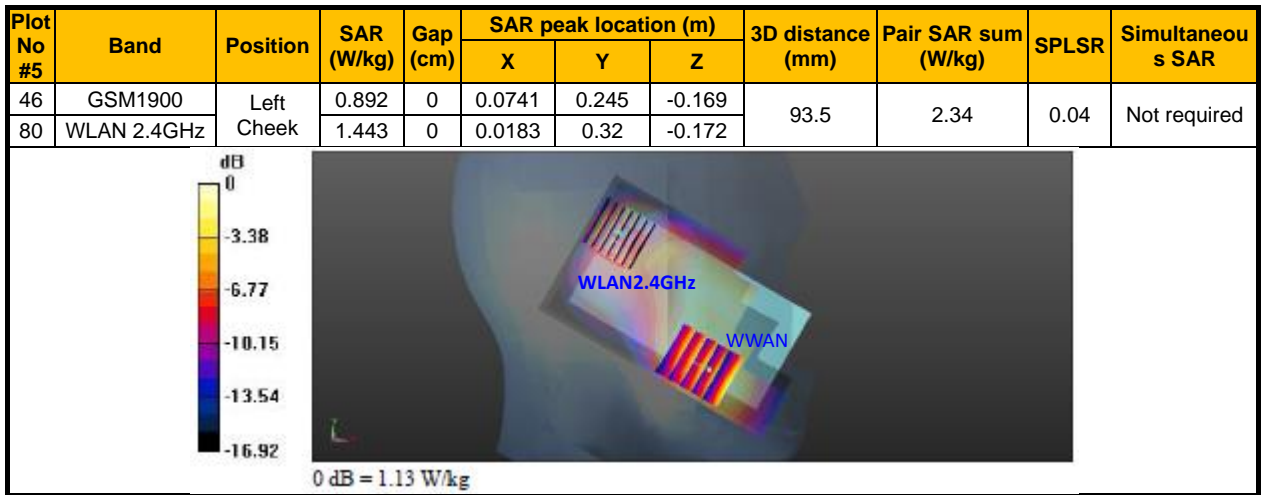
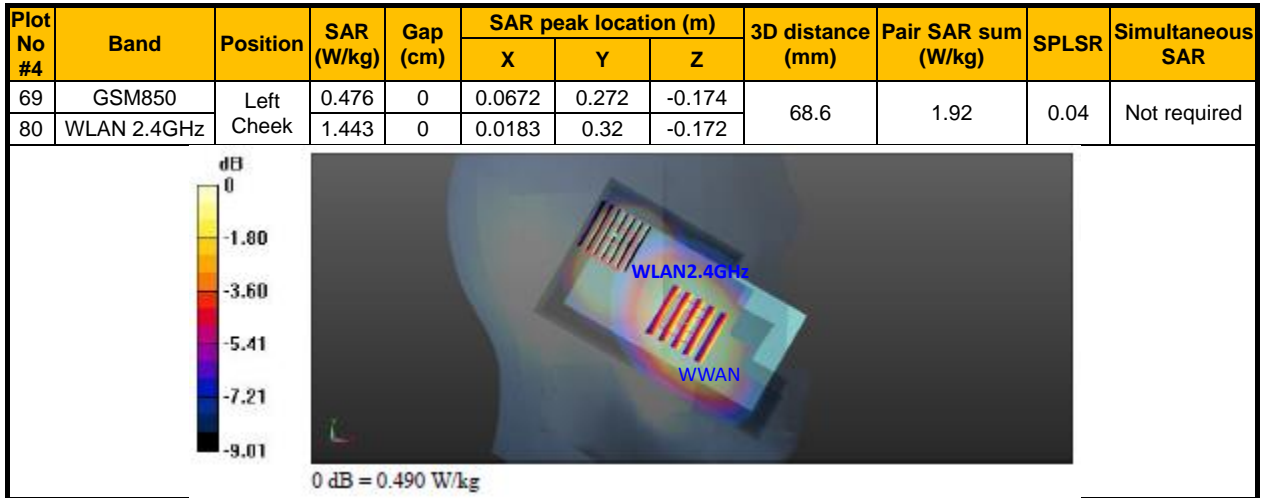


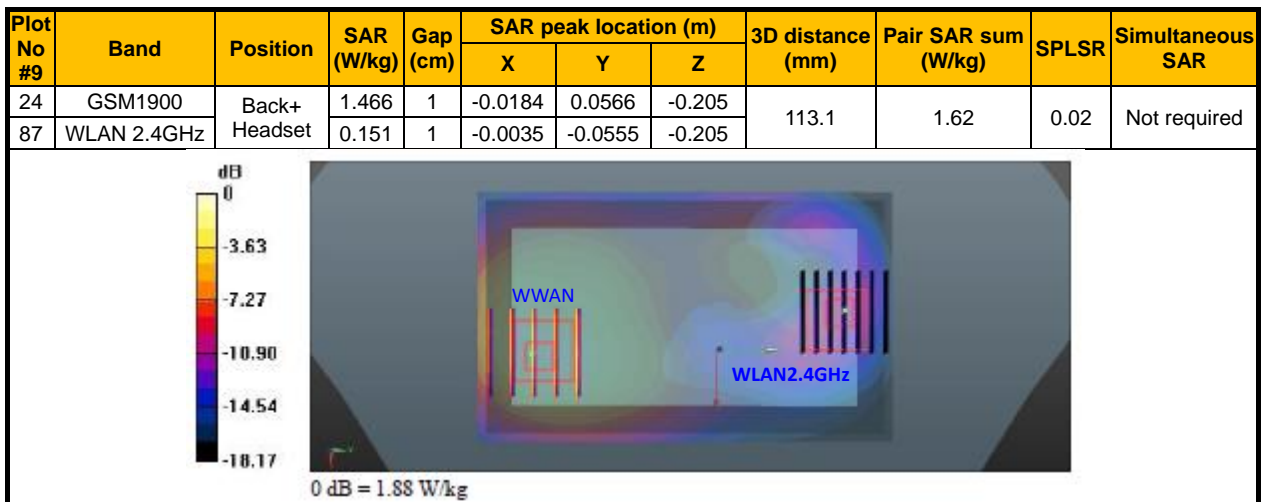
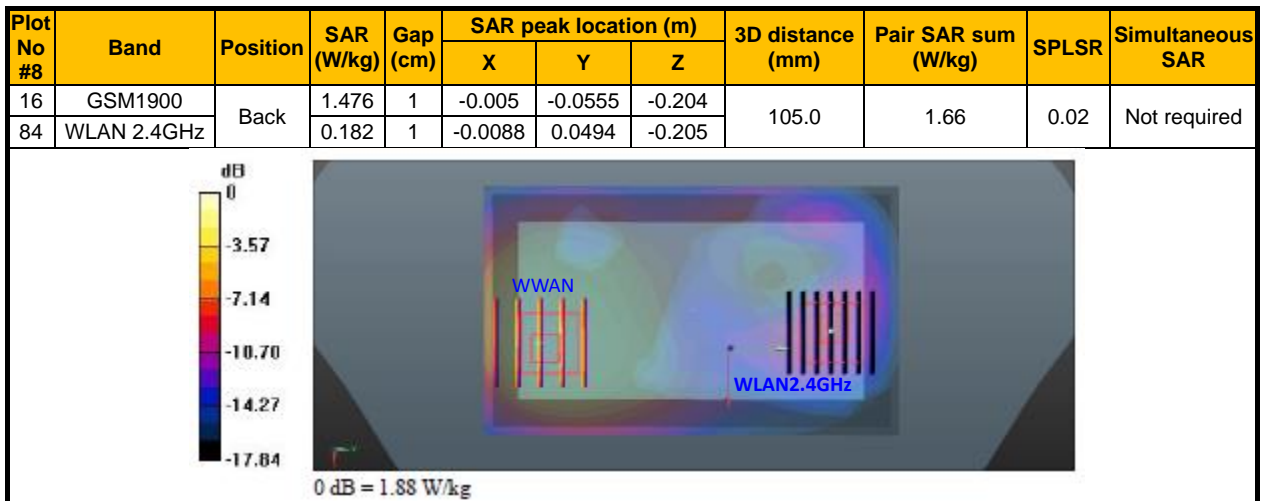
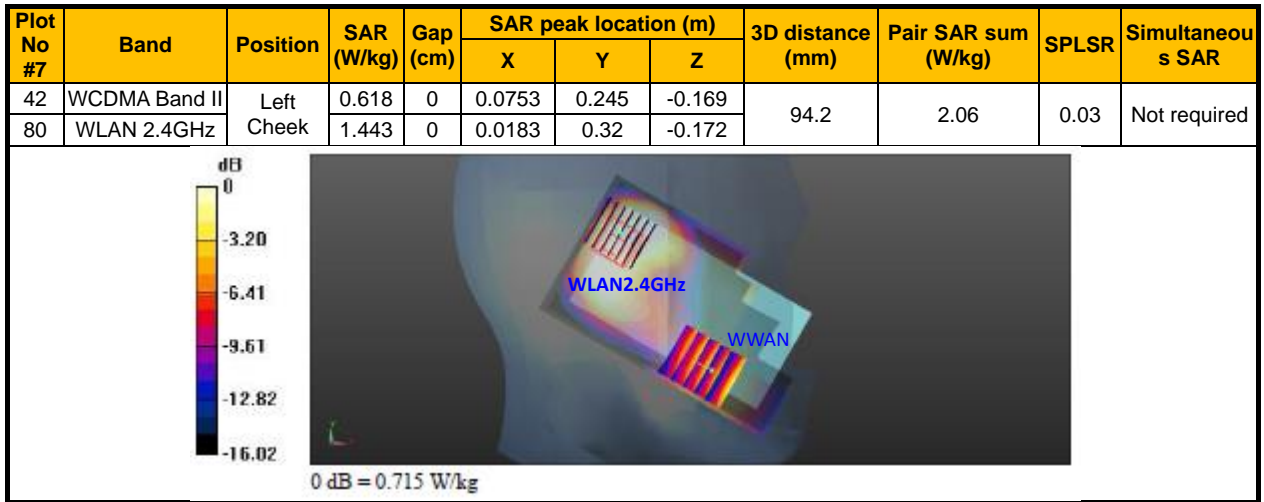
Plot No #2	Band	Position	SAR (W/kg)	Gap (cm)	SAR peak location (m)			3D distance (mm)	Pair SAR sum (W/kg)	SPLSR	Simultaneous SAR
					X	Y	Z				
52	WCDMA Band V	Right Cheek	0.615	0	0.0683	-0.268	-0.173	65.6	1.65	0.03	Not required
76	WLAN 2.4GHz		1.034	0	0.0135	-0.304	-0.171				



Plot No #3	Band	Position	SAR (W/kg)	Gap (cm)	SAR peak location (m)			3D distance (mm)	Pair SAR sum (W/kg)	SPLSR	Simultaneous SAR
					X	Y	Z				
40	WCDMA Band II	Right Cheek	0.79	0	0.0708	-0.254	-0.171	76.0	1.82	0.03	Not required
76	WLAN 2.4GHz		1.034	0	0.0135	-0.304	-0.171				







Remark:

- Per KDB 447498 D01v05r01, if SPLSR ≤ 0.04, further evaluation is not required.

Test Engineer : Kat Yin

15. Uncertainty Assessment

The component of uncertainty may generally be categorized according to the methods used to evaluate them. The evaluation of uncertainty by the statistical analysis of a series of observations is termed a Type A evaluation of uncertainty. The evaluation of uncertainty by means other than the statistical analysis of a series of observation is termed a Type B evaluation of uncertainty. Each component of uncertainty, however evaluated, is represented by an estimated standard deviation, termed standard uncertainty, which is determined by the positive square root of the estimated variance.

A Type A evaluation of standard uncertainty may be based on any valid statistical method for treating data. This includes calculating the standard deviation of the mean of a series of independent observations; using the method of least squares to fit a curve to the data in order to estimate the parameter of the curve and their standard deviations; or carrying out an analysis of variance in order to identify and quantify random effects in certain kinds of measurement.

A type B evaluation of standard uncertainty is typically based on scientific judgment using all of the relevant information available. These may include previous measurement data, experience, and knowledge of the behavior and properties of relevant materials and instruments, manufacture’s specification, data provided in calibration reports and uncertainties assigned to reference data taken from handbooks. Broadly speaking, the uncertainty is either obtained from an outdoor source or obtained from an assumed distribution, such as the normal distribution, rectangular or triangular distributions indicated in Table 14.1

Uncertainty Distributions	Normal	Rectangular	Triangular	U-Shape
Multi-plying Factor ^(a)	1/k ^(b)	1/√3	1/√6	1/√2

(a) standard uncertainty is determined as the product of the multiplying factor and the estimated range of variations in the measured quantity

(b) κ is the coverage factor

Table 15.1. Standard Uncertainty for Assumed Distribution

The combined standard uncertainty of the measurement result represents the estimated standard deviation of the result. It is obtained by combining the individual standard uncertainties of both Type A and Type B evaluation using the usual “root-sum-squares” (RSS) methods of combining standard deviations by taking the positive square root of the estimated variances.

Expanded uncertainty is a measure of uncertainty that defines an interval about the measurement result within which the measured value is confidently believed to lie. It is obtained by multiplying the combined standard uncertainty by a coverage factor. Typically, the coverage factor ranges from 2 to 3. Using a coverage factor allows the true value of a measured quantity to be specified with a defined probability within the specified uncertainty range. For purpose of this document, a coverage factor two is used, which corresponds to confidence interval of about 95 %. The DASY uncertainty Budget is shown in the following tables.

Error Description	Uncertainty Value (±%)	Probability Distribution	Divisor	Ci (1g)	Ci (10g)	Standard Uncertainty (1g)	Standard Uncertainty (10g)
Measurement System							
Probe Calibration	6.0	Normal	1	1	1	± 6.0 %	± 6.0 %
Axial Isotropy	4.7	Rectangular	√3	0.7	0.7	± 1.9 %	± 1.9 %
Hemispherical Isotropy	9.6	Rectangular	√3	0.7	0.7	± 3.9 %	± 3.9 %
Boundary Effects	1.0	Rectangular	√3	1	1	± 0.6 %	± 0.6 %
Linearity	4.7	Rectangular	√3	1	1	± 2.7 %	± 2.7 %
System Detection Limits	1.0	Rectangular	√3	1	1	± 0.6 %	± 0.6 %
Readout Electronics	0.3	Normal	1	1	1	± 0.3 %	± 0.3 %
Response Time	0.8	Rectangular	√3	1	1	± 0.5 %	± 0.5 %
Integration Time	2.6	Rectangular	√3	1	1	± 1.5 %	± 1.5 %
RF Ambient Noise	3.0	Rectangular	√3	1	1	± 1.7 %	± 1.7 %
RF Ambient Reflections	3.0	Rectangular	√3	1	1	± 1.7 %	± 1.7 %
Probe Positioner	0.4	Rectangular	√3	1	1	± 0.2 %	± 0.2 %
Probe Positioning	2.9	Rectangular	√3	1	1	± 1.7 %	± 1.7 %
Max. SAR Eval.	1.0	Rectangular	√3	1	1	± 0.6 %	± 0.6 %
Test Sample Related							
Device Positioning	2.9	Normal	1	1	1	± 2.9 %	± 2.9 %
Device Holder	3.6	Normal	1	1	1	± 3.6 %	± 3.6 %
Power Drift	5.0	Rectangular	√3	1	1	± 2.9 %	± 2.9 %
Phantom and Setup							
Phantom Uncertainty	4.0	Rectangular	√3	1	1	± 2.3 %	± 2.3 %
Liquid Conductivity (Target)	5.0	Rectangular	√3	0.64	0.43	± 1.8 %	± 1.2 %
Liquid Conductivity (Meas.)	2.5	Normal	1	0.64	0.43	± 1.6 %	± 1.1 %
Liquid Permittivity (Target)	5.0	Rectangular	√3	0.6	0.49	± 1.7 %	± 1.4 %
Liquid Permittivity (Meas.)	2.5	Normal	1	0.6	0.49	± 1.5 %	± 1.2 %
Combined Standard Uncertainty						± 11.0 %	± 10.8 %
Coverage Factor for 95 %						K=2	
Expanded Uncertainty						± 22.0 %	± 21.5 %

Table 15.2. Uncertainty Budget for frequency range 300 MHz to 3 GHz

16. References

- [1] FCC 47 CFR Part 2 “Frequency Allocations and Radio Treaty Matters; General Rules and Regulations”
- [2] ANSI/IEEE Std. C95.1-1992, “IEEE Standard for Safety Levels with Respect to Human Exposure to Radio Frequency Electromagnetic Fields, 3 kHz to 300 GHz”, September 1992
- [3] IEEE Std. 1528-2003, “Recommended Practice for Determining the Peak Spatial-Average Specific Absorption Rate (SAR) in the Human Head from Wireless Communications Devices: Measurement Techniques”, December 2003
- [4] SPEAG DASY System Handbook
- [5] FCC KDB 248227 D01 v01r02, “SAR Measurement Procedures for 802.11 a/b/g Transmitters”, May 2007
- [6] FCC KDB 447498 D01 v05r01, “Mobile and Portable Device RF Exposure Procedures and Equipment Authorization Policies”, May 2013
- [7] FCC KDB 648474 D04 v01r01r02, “SAR Evaluation Considerations for Wireless Handsets”, Dec 2013
- [8] FCC KDB 941225 D03 v01, “Recommended SAR Test Reduction Procedures for GSM / GPRS / EDGE”, December 2008
- [9] FCC KDB 941225 D01 v02, “SAR Measurement Procedures for 3G Devices – CDMA 2000 / Ev-Do / WCDMA / HSDPA / HSPA”, October 2007
- [10] FCC KDB 941225 D02 v02r02, “SAR Guidance for HSPA, HSPA+, DC-HSDPA and 1x-Advanced”, May 2013.
- [11] FCC KDB 941225 D06 v01r01, “SAR Evaluation Procedures for Portable Devices with Wireless Router Capabilities”, May 2013
- [12] FCC KDB 865664 D01 v01r02, “SAR Measurement Requirements for 100 MHz to 6 GHz”, Dec 2013.
- [13] FCC KDB 865664 D02 v01r01, “RF Exposure Compliance Reporting and Documentation Considerations”, May 2013