

Content

Get Started	2
Insert SIM card	2
Charge the Battery or Connect to a Computer	2
Keys and Parts	3
Lock and Unlock the Screen	4
Make it yours	5
Add Widgets and more icons to Home Screen	6
Add widgets and icons to home screen	6
Rearrange or remove widgets and icons on your Home screen	6
Enter Launcher	7
Open and Switch Applications	7
Switch to Recently Used Application	8
Make a Call	9
Call Log	10
Reject a Call by Sending a Busy Message	11
Add a Contact	11
Send and Receive Message(s)	12
Browse the Web	14
Enjoy Music	15
Download Applications From Android Market	16
Manage Applications/ Move to SD card	17
Bluetooth	18
Wi-Fi	25
Maintenance & Safety	30

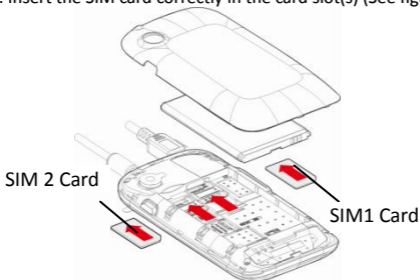
Get Started

Insert SIM card

The phone is a Dual SIM mobile phone allowing you to use the facility of two networks.

To insert SIM card(s):

1. Switch off the mobile phone and remove the rear cover.
2. Insert the SIM card correctly in the card slot(s) (See figure below)



Charge the Battery or Connect to a Computer

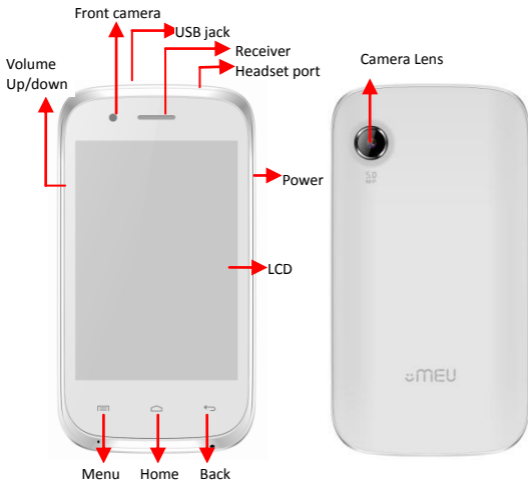
You can charge your battery using the charger or connect the USB cable (supplied with this phone) to the computer.

You can use a shielded USB cable connecting to the computer for data communication.



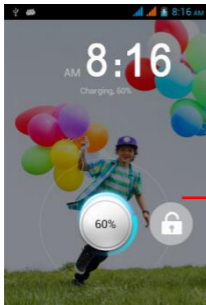
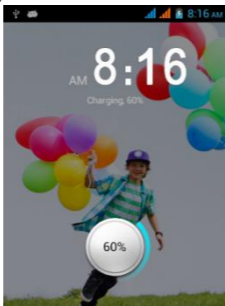
Keys and Parts

The smart phone supports 3G Card and gives you marvelous feelings to experience on Camera, Video recorder, FM radio, Music and Sound recorder. Let you install various APPs, games, and more (supports APK format) by downloading from Android Market.



Lock and Unlock the Screen

Press power button to enter Sleep mode and meanwhile the screen will be locked; press power button again to wake up and then drag the lock to the right side to unlock.

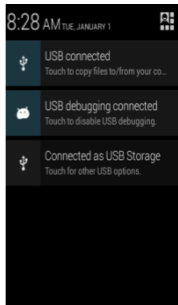
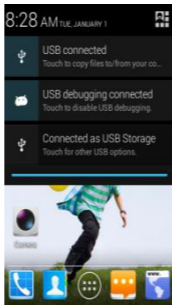


Make it yours

1) Home screen: It is your starting point to access all the features on your phone. It displays application icons, widgets, shortcuts, and other features.

2) Notification Bar: At the top of the screen, the Status bar displays the time, status, and notifications. If there is a new message, missed call or something in the notification bar, you can drag it down to open notification panel and click the desired one to have a view. When you finished, you can close it by dragging the panel up or pressing "Back".

3) Launcher: Touch the Launcher icon at the bottom of the screen to view all installed applications.



Add Widgets and more icons to Home Screen

Add widgets and icons to home screen

Enter Launcher and long press and hold an application till the app displays on the home screen, and then release your finger hold.

Rearrange or remove widgets and icons on your Home screen

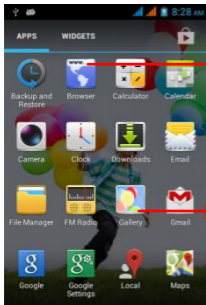
a). Long press and hold the widget or icon you want to move. Once “Remove” appears, don't release your hold on the icon and drag the widget or icon to a new location on the screen. b) . Press and hold on icon for several seconds, and drag the widgets or icon to remove!



Enter Launcher

Open and Switch Applications

The Launcher holds icons for all of the applications on your phone, including any application that you downloaded from Android Market or other sources. On the Home screen, touch the Launcher Icon to open the main menu.



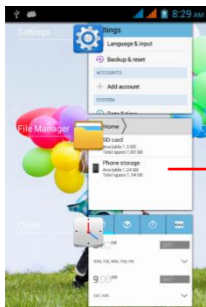
Slide the Launcher left or right to bring more icons into view.

Touch an application to open it.

Press Home icon or Back icon to close the Launcher.


Switch to Recently Used Application

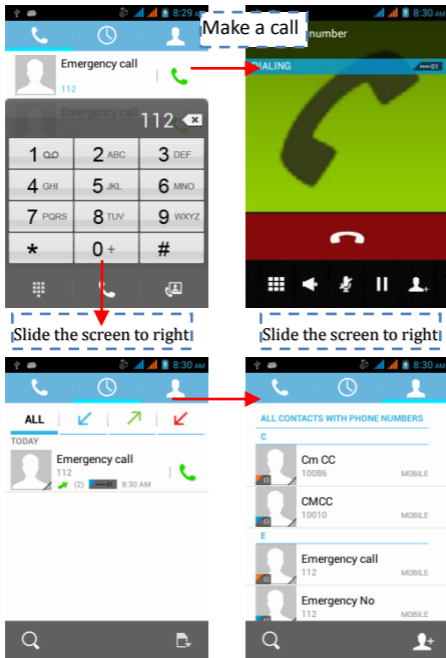
Press and hold the  icon for a few seconds.



Touch to open the application

Make a Call

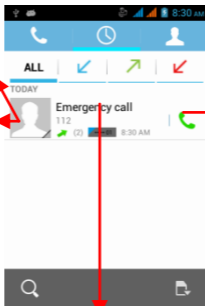
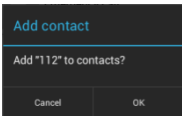
On the start screen choose  and enter a complete phone number to make a call.



Call Log

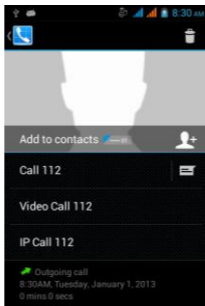
In call log options, you can Make a call, add new contact and send message etc.

Short press this place to add the new Contact.




Touch the icon to dial out.

Touch the icon to view details of this call log.




Reject a Call by Sending a Busy Message

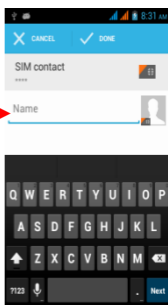
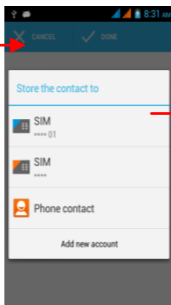
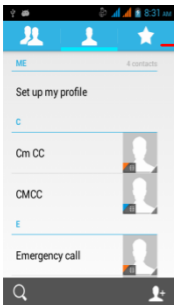
While there is an incoming call, you are inconvenient to accept the call, and then you can send a busy message for rejecting the call.

Drag the circle up to , some busy messages will show on the screen, short tap any of them to send out.

Add a Contact

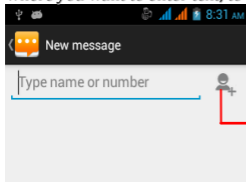
Tap  and enter Contacts and then add a contact (see figure below.)

Tap “” to add a new contact to Phone or SIM card.

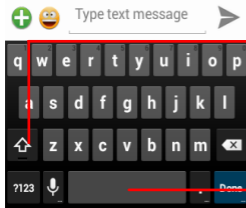


Send and Receive Message(s)

Enter **Messaging**, and then compose new message. You touch a text field where you want to enter text, to open the keyboard.



Tap this to select desired contact from phonebook.



Touch once to capitalize the next letter you type. Touch and hold for caps.

Press space or a punctuation mark to enter the highlighted suggestion.

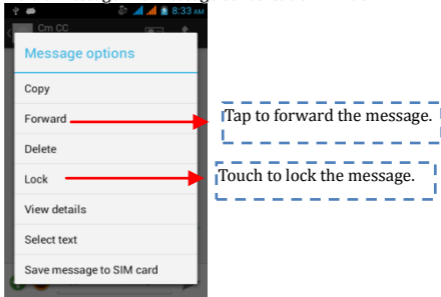
a. When you are composing a new text message, you can select text for cutting or copying. The selected text is highlighted in blue.

Touch the text field or portion that contains text. (see the below figure) You can select all contexts, copy, cut and paste.

b. When a new message comes, you can read by dragging notification panel and click the message, or entering **Message** to read it directly.



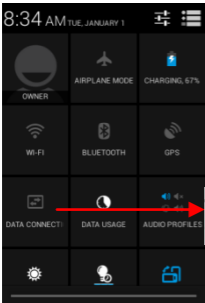
1. Long press one of the all message thread, you can delete the message thread.
2. Touch and hold a message in a message conversation window.



3. Touch **Forward** in the menu that opens.
4. Add a contact.
5. Touch Send icon to send the message.

Browse the Web

Switch on Data connection or WiFi

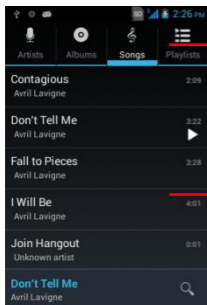


Touch it to switch on or off Data connection

Tips: To browse the web, you need switch on Data connection. If there is WiFi around, you can switch on WiFi to use it browse the web. Some may need password.

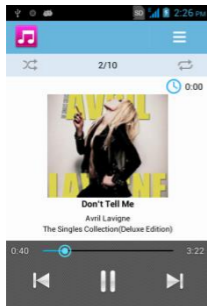
Enjoy Music

When you copy music to your SD card, the Music player searches the card for music files and builds a catalog of your music, based on information about each file that is stored in the file itself.



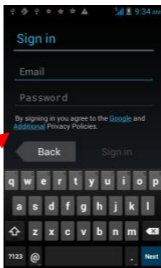
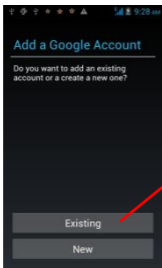
Touch a tab to view your library in one of four ways.

Touch to open the album, songs or playlist.

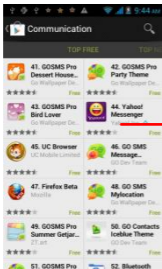


Download Applications From Android Market

a. Add a Google account



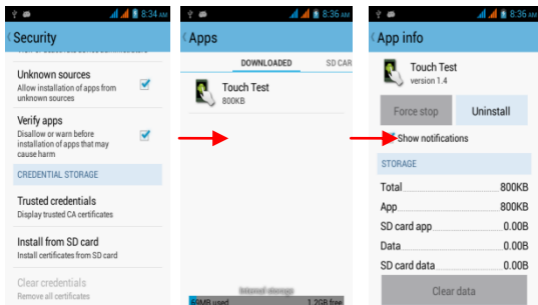
b. Enter Android Market (Play Store) and download apps.



Manage Applications/ Move to SD card

Enter Setting > Apps, then manage the applications.

As you install downloaded Apps, you need switch on “Unknown sources” in Security settings.



Bluetooth

Using Bluetooth

Bluetooth is a short-range wireless communications technology that allows devices to exchange information over a distance of about eight meters without requiring a physical connection.

Turn off Bluetooth when not in use to conserve battery power, or in places where using a wireless device is prohibited, such as on board an aircraft and in hospitals.

Turning Bluetooth on or off

1. Press HOME > Applications> MENU>Settings > Wireless & networks

2. Select or clear the Bluetooth check box.

An even easier way to turn Bluetooth on or off is with the Bluetooth icon on the Status Bar.

Changing the phone name

The phone name identifies your phone to other devices.

1. Press HOME >Applications>MENU>Settings > Wireless & networks

2. If the Bluetooth check box is not selected, select it to turn Bluetooth on.

3. Tap Bluetooth settings > Device name.

Connecting a Bluetooth headset or car kit

You can listen to music over a Bluetooth stereo headset, or have hands-free conversations using a compatible

Bluetooth headset or car kit. It's the same procedure to set up stereo audio and hands-free.

For you to listen to music with your headset or car kit, the headset or car kit must support the A2DP Bluetooth profile.


1. Press HOME > MENU>Applications> Settings > Wireless & networks > Bluetooth settings

2. If Bluetooth is not switched on, tap the Bluetooth check box to switch it on.

3. Make sure that the headset is discoverable, so that your phone can find the headset. Refer to the instructions that came with the headset to find out how to set it in discoverable mode.

4. Tap Scan for devices. Your phone will start to scan for Bluetooth devices within range.

5. When you see the name of your headset displayed in the Bluetooth devices section, tap the name. Your phone then automatically tries to pair with the headset.

6. If automatic pairing fails, enter the pass code supplied with your headset. The pairing and connection status is displayed below the hands-free headset or car kit name in the Bluetooth devices section. When the Bluetooth headset or car kit is connected to your phone, the Bluetooth connected icon  is displayed in the status bar. Depending on the type of headset or car kit you have connected, you can then start using the headset or car kit to listen to music and/or make and receive phone calls.

Reconnecting a headset or car kit

When you have paired a headset with your phone, you

should be able to reconnect it automatically by turning on Bluetooth on your phone, and then turning on the headset.

However, sometimes you will need to reconnect manually, for example if you have been using your headset with another Bluetooth device.

1. Press HOME > MENU>Applications>Settings > Wireless& networks >Bluetooth
2. If Bluetooth is not switched on, tap the Bluetooth check box to switch it on.
3. Make sure that the headset is discoverable.
4. Tap the headset's name in the Bluetooth devices section.
5. If prompted to enter a password, try 0000 or 1234, or consult the headset/car kit documentation to find the password.

If you still cannot reconnect to the headset or car kit, follow the instructions in "Un-pairing from a Bluetooth device" in this chapter, and then follow the instructions under "Connecting a Bluetooth headset or car kit" above.

Disconnecting or unpairing from a Bluetooth device

Disconnecting a Bluetooth device

1. Press HOME > MENU>Applications> Settings > Wireless & networks > Bluetooth settings
2. Choose a device has been connected.
3. Tap Disconnect.

Unpairing from a Bluetooth device

You can make your phone forget its pairing connection with another Bluetooth device. To connect to the other device again, you may need to enter or confirm a password again.

1. Press HOME > MENU>Applications>Settings > Wireless & networks > Bluetooth settings
2. In the Bluetooth devices section, press and hold the device to unpair.
3. Tap Unpair.

Sending and receiving information using Bluetooth

You can use Bluetooth to transfer information between your phone and another Bluetooth- enabled device such as a phone or notebook computer. The first time you transfer information between your phone and another device, you need to enter or confirm a security password. After that, your phone and the other device are paired, and you will not need to exchange password to transfer information in the future.

Sending information from your phone to another device

You can send the following types of information, depending on the device you are sending to:

Images and videos

Calendar events

Contacts

Audio files


1. Set the receiving device to discoverable mode. You may also need to set it to "Receive Beams" or "Receive Files". Refer to the device's documentation for

instructions on receiving information over Bluetooth.

2. On the phone, open the application that contains the information or file you want to send.

For example, if you want to transfer a photo, press HOME, and then tap >photos

3. Follow the steps for the type of item you want to send:

photo or video (in Camera). After capturing a photo, on the preview screen, tap the Share button , and then choose Bluetooth.

Photos and videos (in Photos). On the Albums tab, tap an album. Tap the Share button, tap Bluetooth, select the items you want to share, and then tap Next.

Calendar event. In the Calendar's Day view, Agenda view, or Week view, press and hold the event.

Contact. On the People screen's All tab, press and hold the contact, and then tap Send contact as vCard. Tap the down arrow icon, and then select Bluetooth from the displayed list.

4. If you are prompted to turn on Bluetooth, tap Yes.

5. Tap the name of the receiving device.

6. If prompted, accept the connection on the receiving device, and enter the same password on both your phone and the other device, or confirm the auto-generated password.

7. On the receiving device, accept the file.

The location where the information is saved depends on the type of information and the receiving device.

If you send another file type to a Windows computer, it is

normally saved in the Bluetooth

Exchange folder within your personal document folders.

On Windows XP, the path may be: C:\Documents and Settings \[your username]\ My Documents\ Bluetooth Exchange

On Windows Vista, the path may be: C:\Users\[your username]\Documents

If you send a file to another device, the saved location may depend on the file type. For example, if you send an image file to another mobile phone, it may be saved in a folder named "Images".

Receiving information from another device

Your device is capable of receiving a wide variety of file types with Bluetooth, including photos, music tracks, and documents such as PDFs.

To receive files from another device, you need to have an SD card installed in your phone.

1. Press HOME > MENU>Applications> Settings > Wireless & networks > Bluetooth settings
2. If Bluetooth is not switched on, tap the Bluetooth check box to switch it on.
3. Tap the Discoverable check box.
4. On the sending device, send one or more files to your phone. Refer to the device's documentation for instructions on sending information over Bluetooth.
5. If prompted, enter the same password on both your phone and the other device, or confirm the auto-generated password. A Bluetooth authorization request is displayed on your phone.

6. If you want to automatically receive files from the sending device in future, select the Always trust device check box.

7. Tap OK.

8. When your phone receives a file transfer request notification, slide down the notifications panel, and then tap Accept.

9. When a file is transferred, a notification is displayed. To open the file immediately, slide down the notifications panel, and then tap the relevant notification.

When you open a received file, what happens next depends on the file type:


Media files and documents are usually opened directly in a compatible application. For example, if you open a music track, it starts playing in the Music application.

Wi-Fi

Wi-Fi provides wireless Internet access over distances of about 300 feet (100 meters). To use Wi-Fi on your phone, you need access to a wireless access point or "hotspot". The availability and range of the Wi-Fi signal depends on the number, infrastructure, and other objects through which the signal passes.

Turning Wi-Fi on and connecting to a wireless network

1. Press HOME >Applications> Settings >Wireless & networks
2. Select Wi-Fi settings, choose the Wi-Fi check box to turn Wi-Fi on. The phone will scan for available wireless networks.
3. Tap Wi-Fi settings. The network names and security settings of detected Wi-Fi networks are displayed in the Wi-Fi networks section.
4. Tap a Wi-Fi network to connect. If you selected an open network, you will be automatically connected to the network. If you selected a network that is secured with WEP, enter the key and then tap Connect.

When your phone is connected to a wireless network, the Wi-Fi icon  appears in the status bar and tells you the approximate signal strength (number of bands that light up).

The next time your phone connects to a previously accessed secured wireless network, you will not be prompted to enter the key or other security information

again, unless you reset your phone to its factory default settings.


Checking the wireless network status

1. Press HOME >Applications>Settings > Wireless & networks
2. On the Wireless & networks screen, tap Wi-Fi settings, and then tap the wireless network that the phone is currently connected to.

A message box is then displayed showing the Wi-Fi network name, status, speed, signal strength, and more.

If you want to remove the wireless network settings on your phone, tap Forget on this window. You need to enter the settings again if you want to connect to this wireless network.

Connecting to another Wi-Fi network

1. On the Wireless& Network settings screen. It displays Wi-Fi settings and Wi-Fi networks.
2. Wi-Fi settings include: Wi-Fi (Turn it on or off here) and Network Notification (Notify or not when an open network is available).
3. Wi-Fi networks: It shows all the networks the phone scanned. If it needs the password to connect, there will be the icon  beside the name of that network.
4. Tap the network you want to connect, then input the password if necessary, tap Connect.
5. If the wireless network you want to connect to is not in the list of detected networks, scroll down the screen, then tap Add Wi-Fi network. Enter Network SSID, choose

the Security, and then tap Save.

Connecting to a virtual private network (VPN)

From your phone, you can add, set up, and manage virtual private networks (VPNs) that allow you to connect and access resources inside a secured local network, such as your corporate network.

Preparing your phone for VPN connection

Depending on the type of VPN you are using at work, you may be required to enter your login credentials and/or install security certificates before you can connect to your company's local network. You can get this information from your network administrator.

Also, your phone must first establish a Wi-Fi or data connection before you can initiate a VPN connection. For information about setting up and using these connections on your phone, see "Data connection" and "Wi-Fi" in this chapter.

Setting up secure credential storage

If your network administrator instructs you to download and install security certificates, you must first set up the phone's secure credential storage.

1. Press HOME >Applications>Settings >Location& Security, and then tap Set password.
2. Enter a new password (at least 8 characters without any spaces) for the credential storage, scroll down and confirm the password, and then tap OK.
3. Select the Use secure credentials check box.

You can then download and install the certificates


needed to access your local network. Your network administrator can tell you how to do this.

Adding a VPN connection

1. Press HOME >Applications> Settings > Wireless & networks > VPN settings
2. Tap Add VPN, and then tap the type of VPN you want to add. There are defaulted types as below: Add PPTP VPN; Add L2TP VPN; Add L2TP VPN; Add L2TP/IPSec PSK VPN; Add L2TP/IPSec CRT VPN.
3. Tap the VPN settings and set them up according to the security details you have obtained from your network administrator.
4. When finished, press MENU, and then tap Save.

The VPN is then added to the VPNs section of the VPN settings screen.

Connecting to a VPN

1. Press HOME >Applications>Settings > Wireless & networks > VPN settings.
2. In the VPNs section, tap the VPN that you want to connect to.
3. When prompted, enter your log in credentials, and then tap Connect. When you are connected, the VPN connected icon  appears in the notification area of the title bar.
4. Open the web browser to access resources such as intranet sites on your corporate network. See "Using your phone's web browser" for more information.

Disconnecting from a VPN

1. Press and hold the title bar, and then slide down your finger to open the Notifications panel.
2. Tap the VPN connection to return to the VPN settings screen, and then tap the VPN connection to disconnect from it.

When your phone has disconnected from the VPN, the VPN disconnected icon displayed in the notification area of the title bar.

Wi-Fi Settings

See all of Wi-Fi settings on the chapter of “Wireless & Network”.

Maintenance & Safety

Please read and observe the following information for safe and proper use of your phone and to prevent damage. Also, keep the user guide in an accessible place at all the times after reading it.

1. After sales service

Kindly refer to the Warranty Card provided in the sales package box.

2. Charger and Adapter Safety

Charger and adapter are designed for indoor use only.

3. Battery Information and Care

- Please do not disassemble the rear cover of the mobile phone, since the battery is inbuilt.
- Recharge the battery after long periods of non-use to maximize battery life.
- Battery life will vary due to usage patterns and environmental conditions.
- The self-protection function of the battery cuts the power of the phone when its operation is in an abnormal status. In this case, remove the battery from the phone, reinsert it, and turn the phone on.

4. General Notice

- Do not place items containing magnetic components such as a credit card, phone card, bank book, or subway ticket near your phone. The magnetism of the phone may damage the data stored in the magnetic strip.
- Talking on your phone for long period of time may reduce call quality due to heat generated during use.
- When the phone is not used for a long period time, store it in a safe place with the power cord unplugged.
- Using the phone in proximity to receiving equipment (i.e. TV or Radio) may cause interference to the phone.
- Do not immerse your phone in water. If this happens, remove the battery and take it to an Authorized Service Center.
- Do not paint your phone.
- The data saved in your phone might be deleted due to careless

use, repair of the phone, or upgrade of the software. Please backup your important phone numbers. (Ring tones, text messages, voice messages, picture, and videos could also be deleted.) The manufacturer is not liable for damage due to the loss of data.

- Do not turn your phone on or off when the phone is close to your ear.

Warning: Company will not bear any responsibility for any incompliance with the above guidelines or improper use of the mobile phone. Our company keeps the right to make modifications to any of the content here in this user guide without public announcement in advance. The content of this manual may vary from the actual content displayed in the device. In such case, the latter shall govern.

FCC Regulations:

This mobile phone complies with part 15 of the FCC Rules. Operation is subject to the following two conditions: (1) This device may not cause harmful interference, and (2) this device must accept any interference received, including interference that may cause undesired operation.

This mobile phone has been tested and found to comply with the limits for a Class B digital device, pursuant to Part 15 of the FCC Rules. These limits are designed to provide reasonable protection against harmful interference in a residential installation. This equipment generates, uses and can radiated radio frequency energy and, if not installed and used in accordance with the instructions, may cause harmful interference to radio communications. However, there is no guarantee that interference will not occur in a particular installation. If this equipment does cause harmful interference to radio or television reception, which can be determined by turning the equipment off and on, the user is encouraged to try to correct the interference by one or more of the following measures:

- Reorient or relocate the receiving antenna.
- Increase the separation between the equipment and receiver.
- Connect the equipment into an outlet on a circuit different from that to which the receiver is connected.
- Consult the dealer or an experienced radio/TV technician for help.

FCC Note:

Caution: Changes or modifications not expressly approved by the party responsible for compliance could void the user's authority to operate the equipment.

RF Exposure Information (SAR)

This phone is designed and manufactured not to exceed the emission limits for exposure to radio frequency (RF) energy set by the Federal

Communications Commission of the United States.

During SAR testing, this device was set to transmit at its highest certified power level in all tested frequency bands, and placed in positions that simulate RF exposure in usage against the head with no separation, and near the body with the separation of 10 mm. Although the SAR is determined at the highest certified power level, the actual SAR level of the device while operating can be well below the maximum value. This is because the phone is designed to operate at multiple power levels so as to use only the power required to reach the network. In general, the closer you are to a wireless base station antenna, the lower the power output.

The exposure standard for wireless devices employing a unit of measurement is known as the Specific Absorption Rate, or SAR. The SAR limit set by the FCC is 1.6W/kg.

This device is complied with SAR for general population /uncontrolled exposure limits in ANSI/IEEE C95.1-1992 and had been tested in accordance with the measurement methods and procedures specified in IEEE1528. This device has been tested and meets the FCC RF exposure guidelines when tested with the device directly contacted to the body.

The FCC has granted an Equipment Authorization for this model phone with all reported SAR levels evaluated as in compliance with the FCC RF exposure guidelines. SAR information on this model phone is on file with the FCC and can be found under the Display Grant section of www.fcc.gov/oet/ea/fccid after searching on FCC ID: WVBA765X.

For this device, the highest reported SAR value for usage against the head is 1.35 W/kg, for usage near the body is 1.39 W/kg.

While there may be differences between the SAR levels of various phones and at various positions, they all meet the government requirements.

SAR compliance for body-worn operation is based on a separation distance of 10 mm between the unit and the human body. Carry this device at least 10 mm away from your body to ensure RF exposure level compliant or lower to the reported level. To support body-worn operation, choose the belt clips or holsters, which do not contain metallic components, to maintain a separation of 10 mm between this device and your body.

RF exposure compliance with any body-worn accessory, which contains metal, was not tested and certified, and use such body-worn accessory should be avoided.