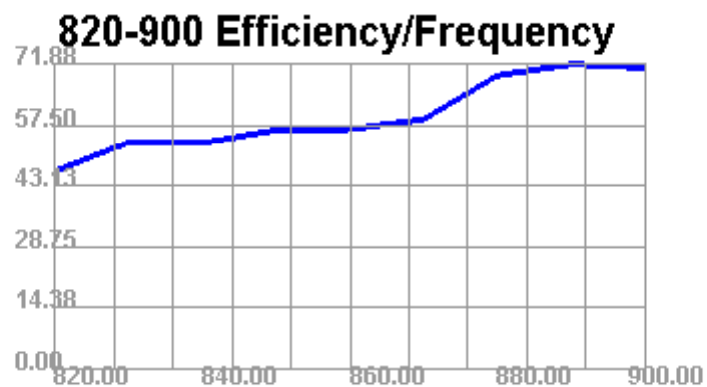
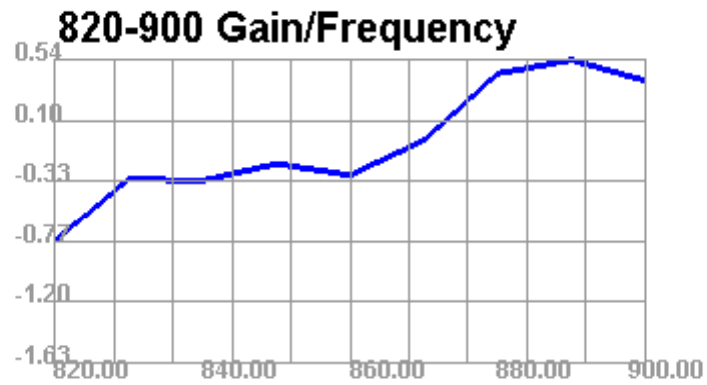
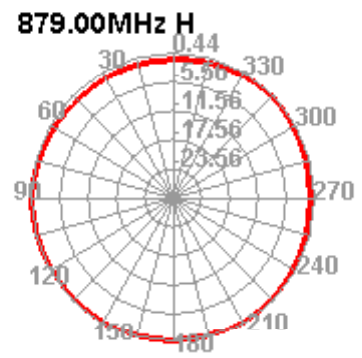
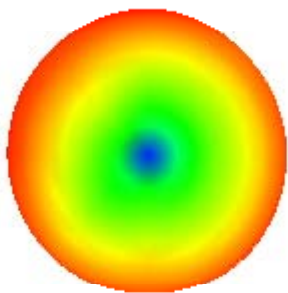
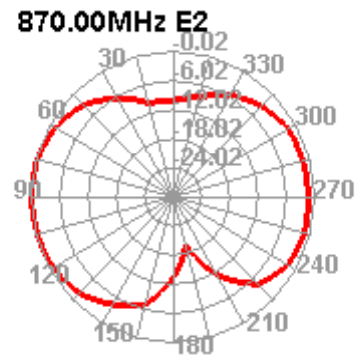
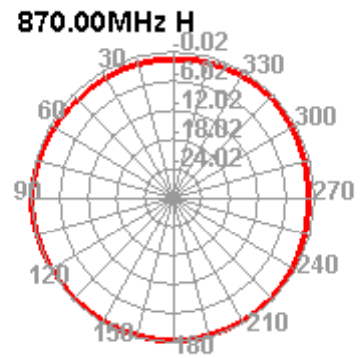
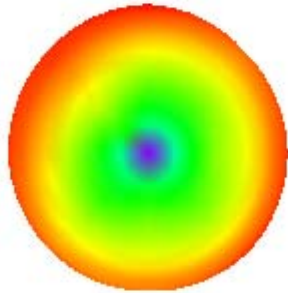
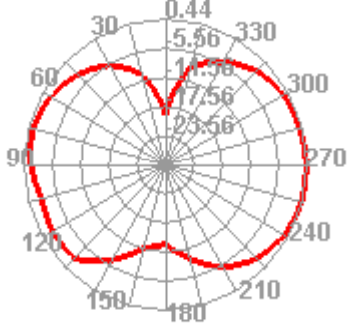


Passive Test For 820-900								
Freq (MHz)	Effi (%)	Effi (dB)	Gain (dBi)	Gain (dBd)	Max (dB)	Min (dB)	Attenut Hor	Attenut Ver
820	46.61	-3.32	-0.77	-2.92	-0.77	-15.33	44.35	43.87
830	53.42	-2.72	-0.32	-2.47	-0.32	-17.56	45.15	44.83
840	53.27	-2.74	-0.33	-2.48	-0.33	-20.82	45.1	44.93
850	56.4	-2.49	-0.21	-2.36	-0.21	-18.3	44.67	44.86
860	56.61	-2.47	-0.29	-2.44	-0.29	-16.53	44.58	44.78
870	58.96	-2.29	-0.04	-2.19	-0.04	-15.58	44.94	44.9
880	69.22	-1.6	0.44	-1.71	0.44	-15.42	45.25	45.05
890	71.88	-1.43	0.54	-1.61	0.54	-14.99	45.05	45.03
900	71.04	-1.48	0.39	-1.76	0.39	-15.96	45.4	45.53





**879.00MHz E1**



**879.00MHz E2**

