



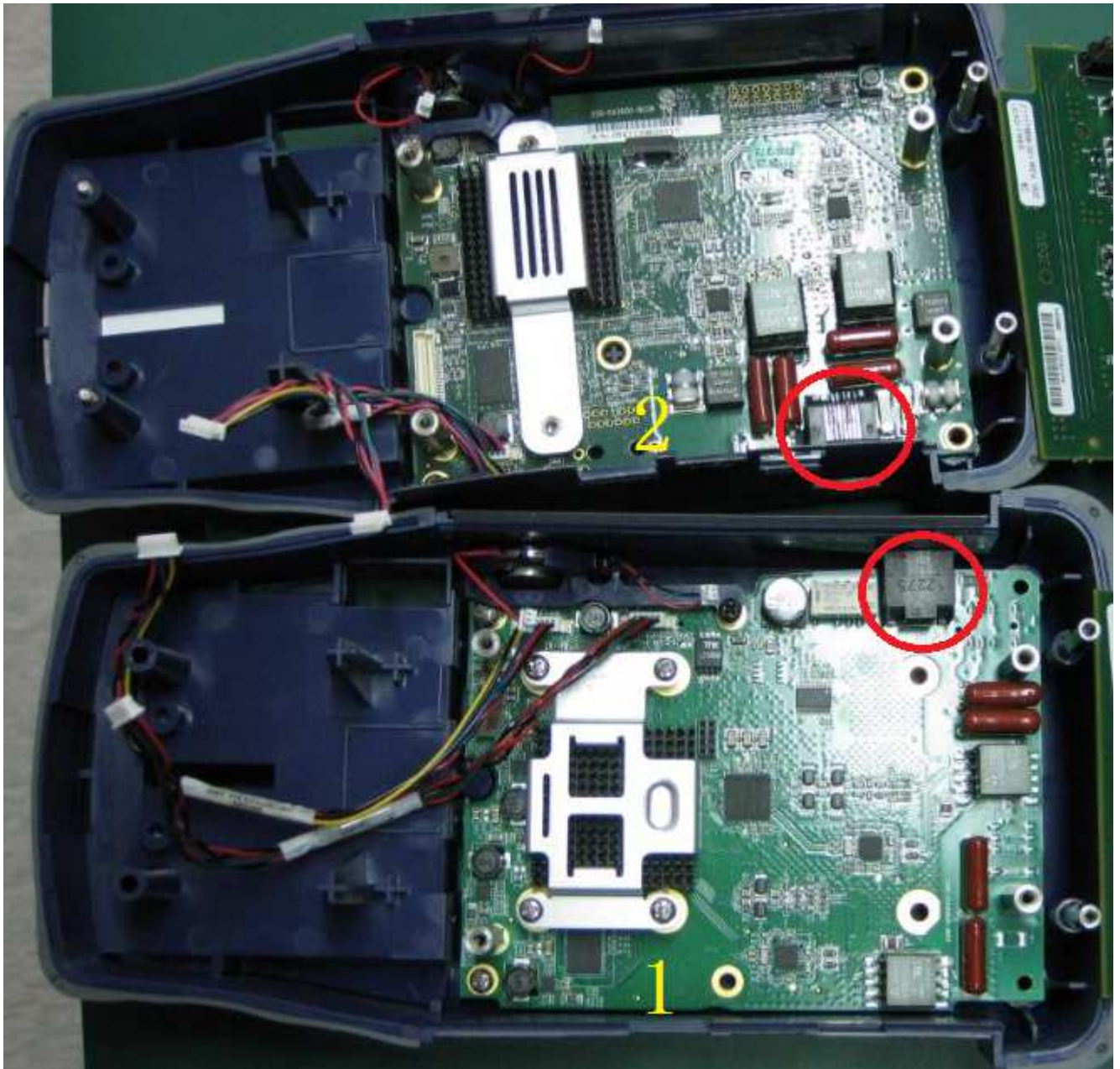
10th Floor, Resources Tech Building
No.1 Songpingshan Rd., (North Building)
Shenzhen High-Tech Industry Park
North Block, Nanshan District
Shenzhen, China 518057
Tel +86-755-8691-0100
Fax +86-755- 8691-0101
www.jdsu.com

TUV Shenzhen,

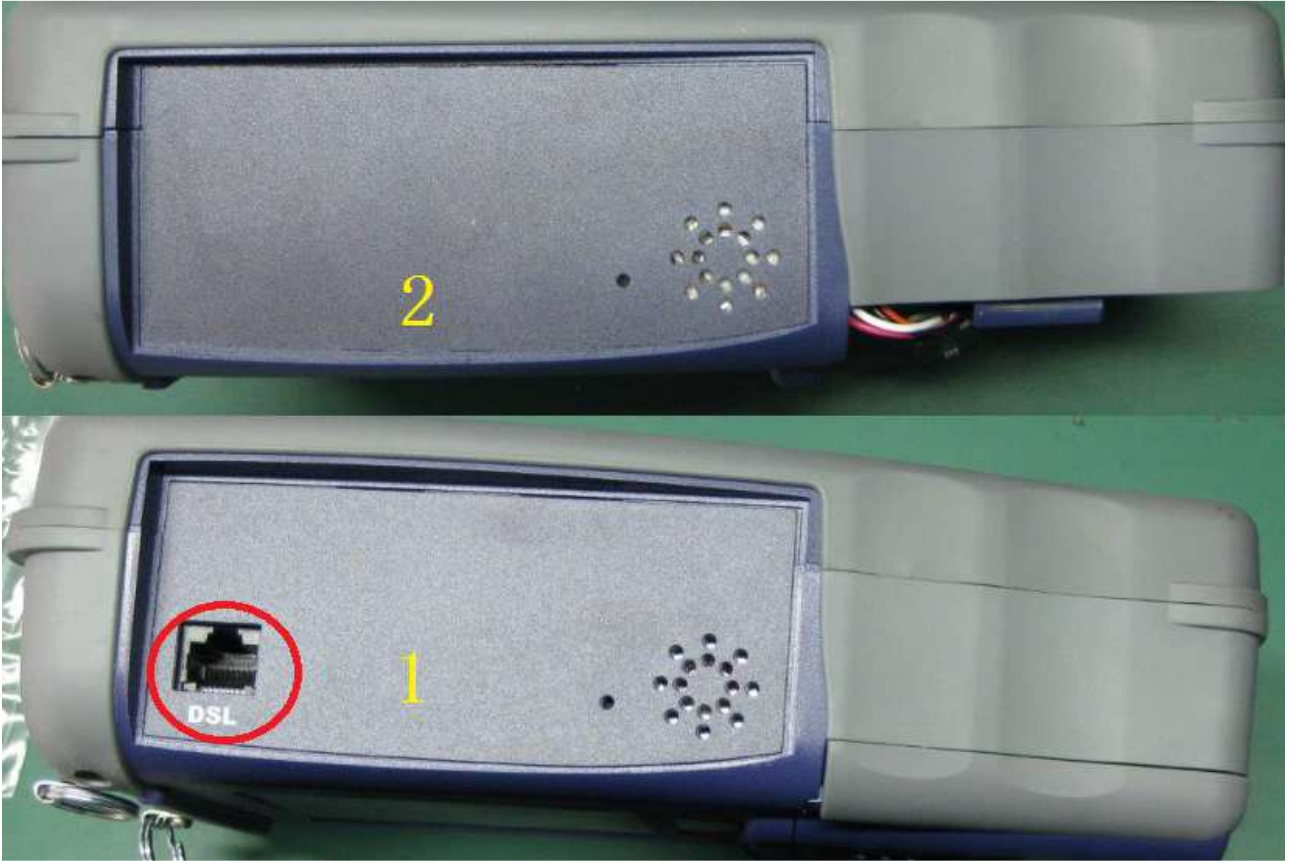
Below are our SmartClass TPS variants/models differences' descriptions.

- Variant/Model 1: **SCTPS-AB-CU**
- Variant/Model 2: **CSC-TPSVW-CU**
- Variant/Model 3: **SCTPS-AB**
- Variant/Model 4: **CSC-TPSVW**

For Variant 1 and 2: There are 3 boards in both variant units (top processor board, middle measurement board, bottom DSL modem board). For these 2 variants, top and middle boards are same, bottom board (DSL modem board) is different, they all have one interface/port to outside (DSL, RJ45), but in different position.



So 2 variants' overlay is a little different because of DSL port's position. Left overlays:



Right overlays:



Variant 3 is thin revision to Variant 1, it only have top and bottom board inside, use a EMI shield to replace middle measurement board. So Variant 3 doesn't have top 3 jacks and right side's POTS port.

Variant 4 is thin revision to Variant 2, it only have top and bottom board inside, use a EMI shield to replace middle measurement board. So Variant 4 doesn't have top 3 jacks and right side's POTS port.

For Variant 1&2:



For Variant 3&4:

