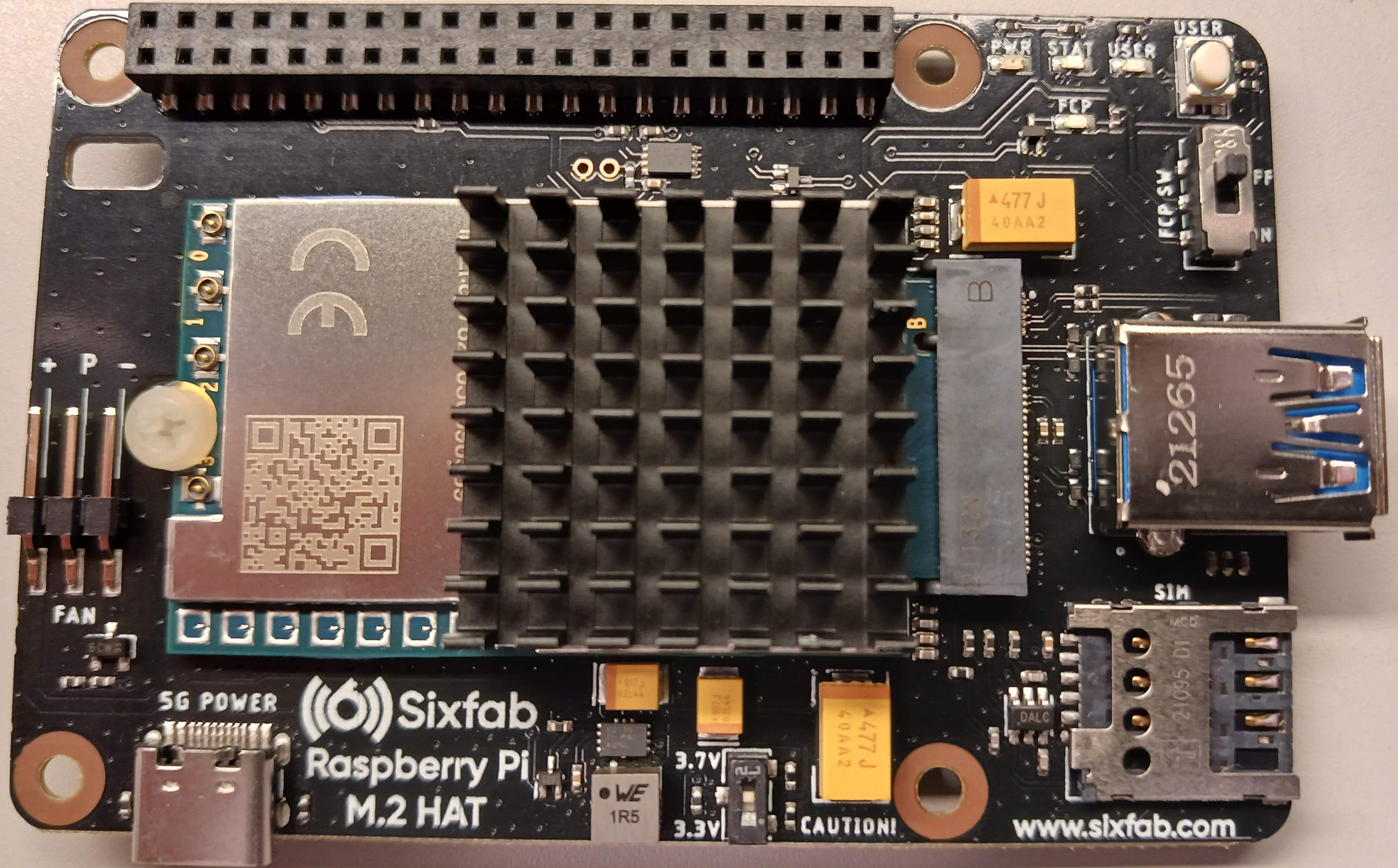


Sixfab  
Raspberry Pi  
M.2 HAT  
www.sixfab.com

ISO class 0 WDR



Sixfab  
Raspberry Pi  
M.2 HAT

www.sixfab.com

5G POWER

FAN

SIM

A477J  
40AA2

A477J  
40AA2

WE  
1R5

3.7V

3.3V

CAUTION!

DALC

USER

STAT

USER

FCP

FCP SW

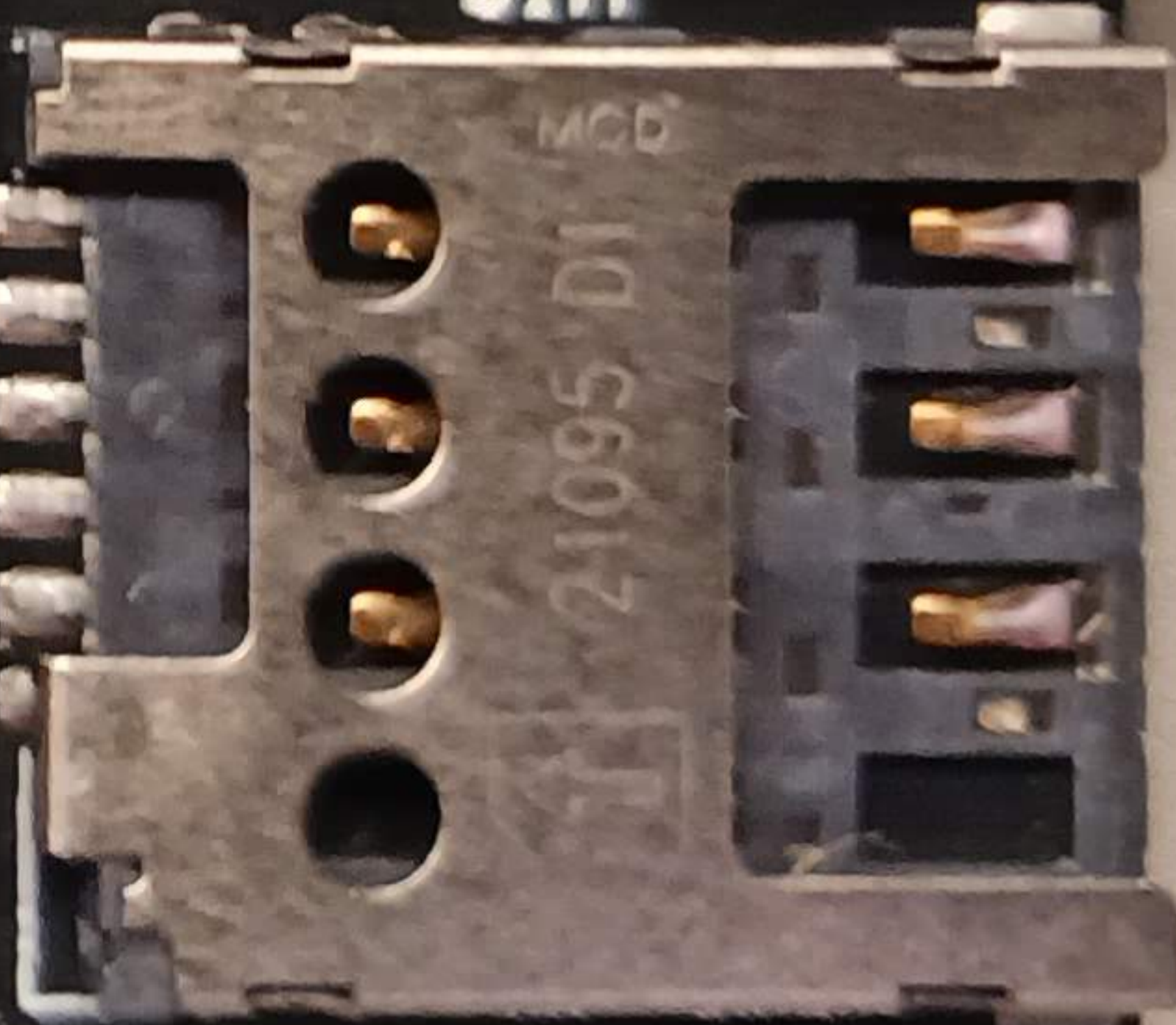
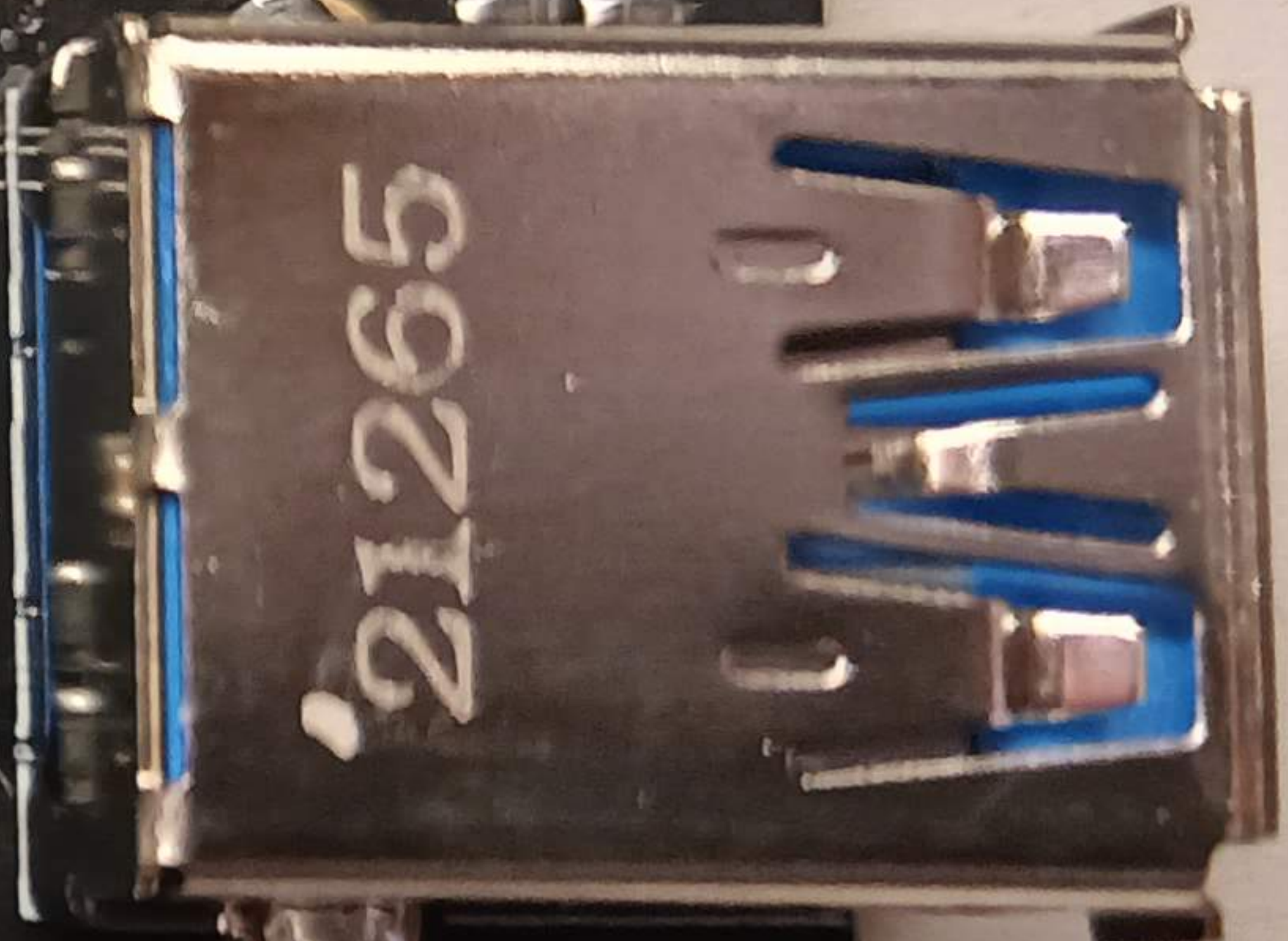
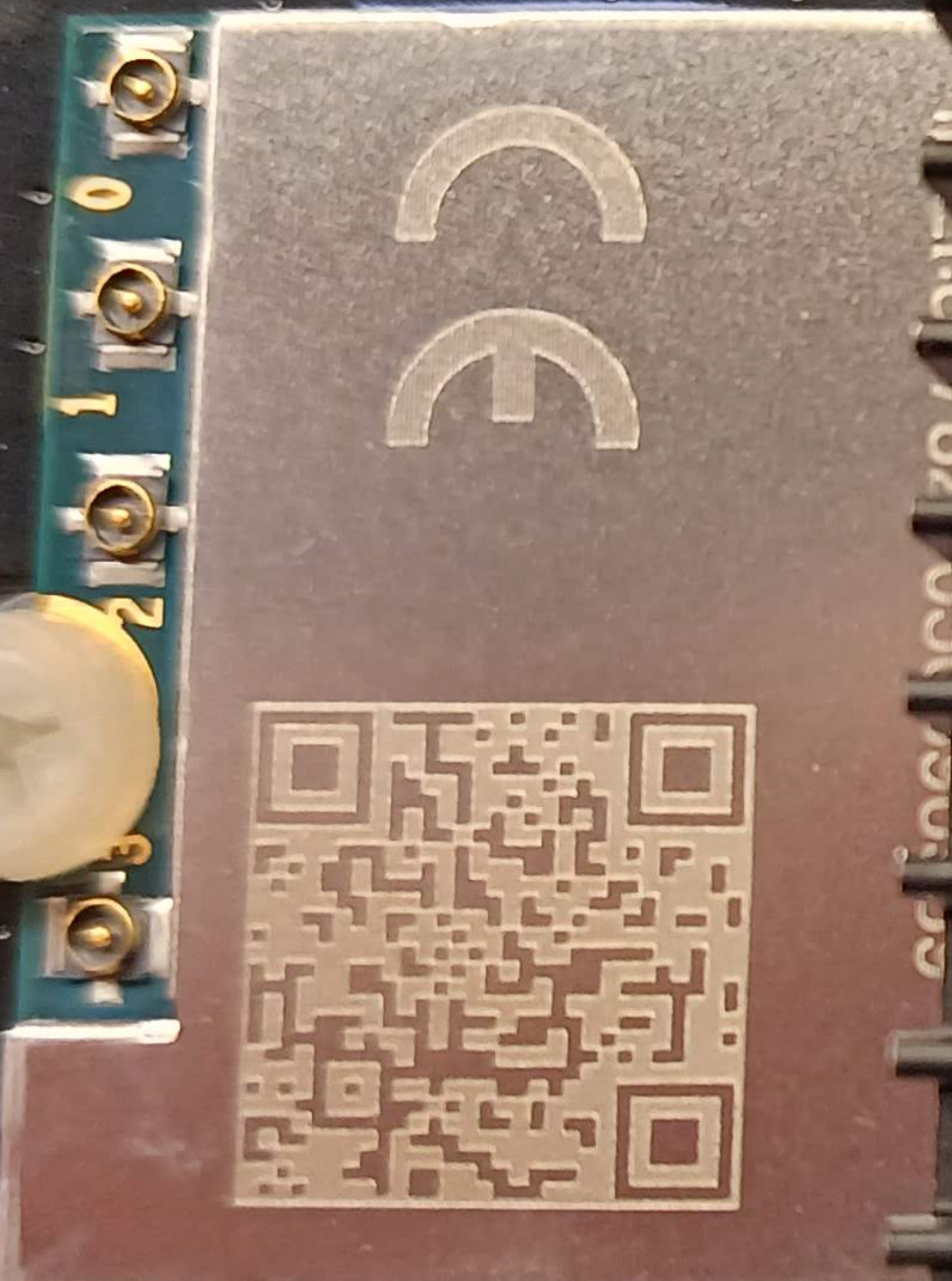
FF

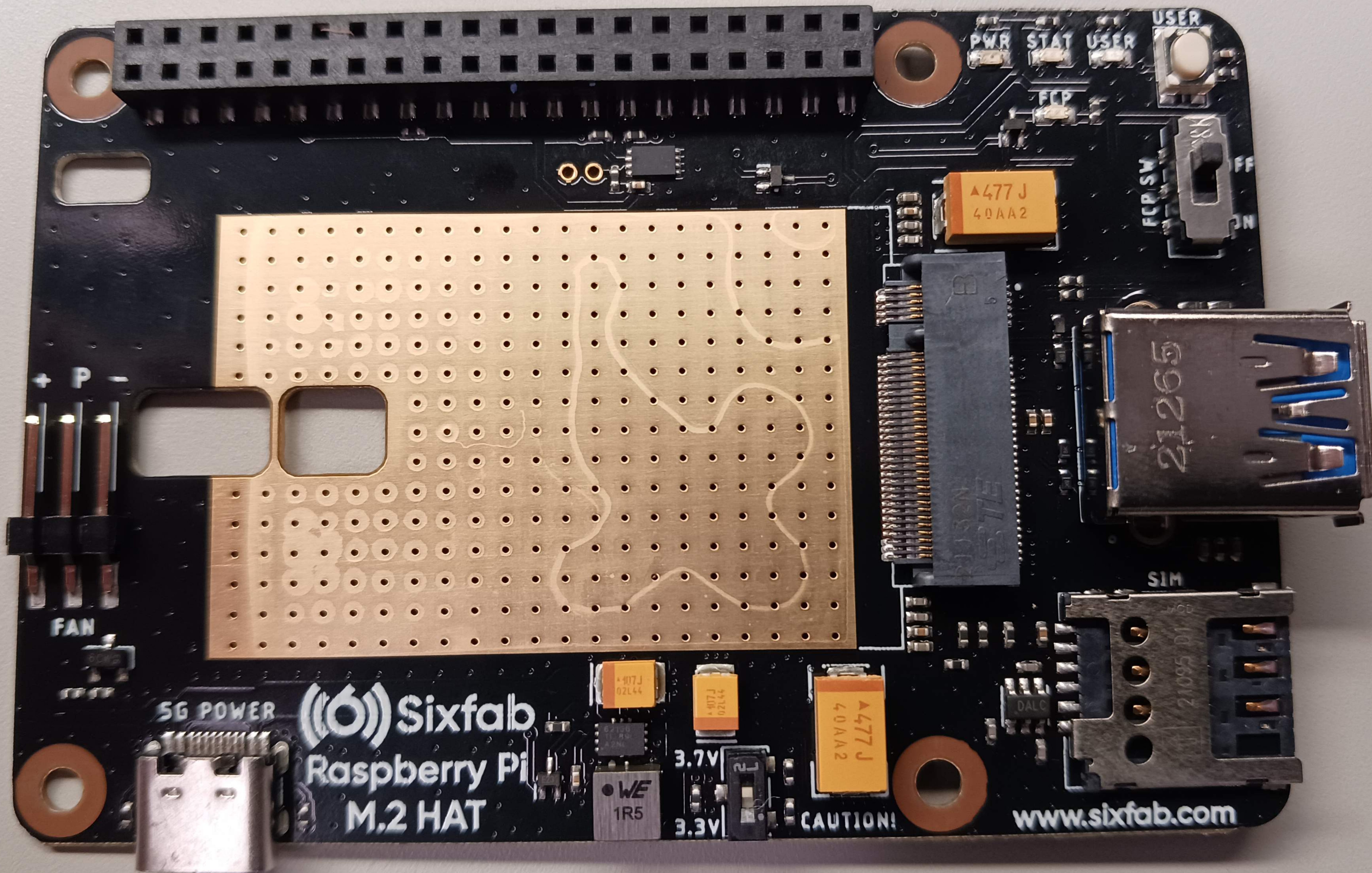
21265


B

MCD

21095 D1





 Sixfab  
Raspberry Pi  
M.2 HAT

www.sixfab.com

5G POWER

FAN

PWR

STAT

USER

USER

FCP

FCP SW

▲477 J  
40AA2

ELC  
FCP SW

21265

SIM

21095 01/20

▲407 J  
02L44

▲407 J  
02L44

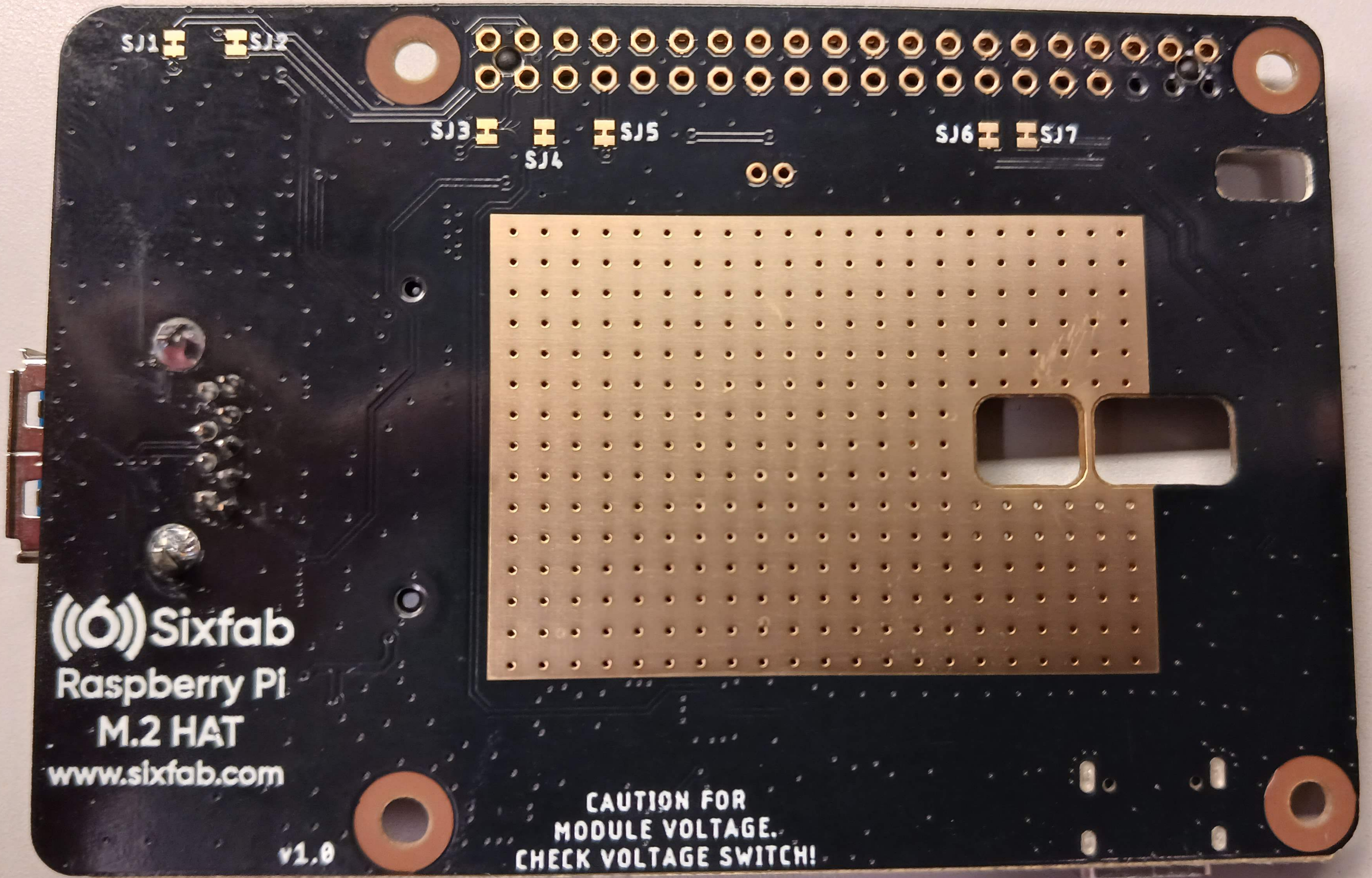
▲477 J  
40AA2

WE  
1R5

3.7V

3.3V

CAUTION!



 Sixfab  
Raspberry Pi  
M.2 HAT  
[www.sixfab.com](http://www.sixfab.com)

v1.0

CAUTION FOR  
MODULE VOLTAGE.  
CHECK VOLTAGE SWITCH!

SJ1

SJ2

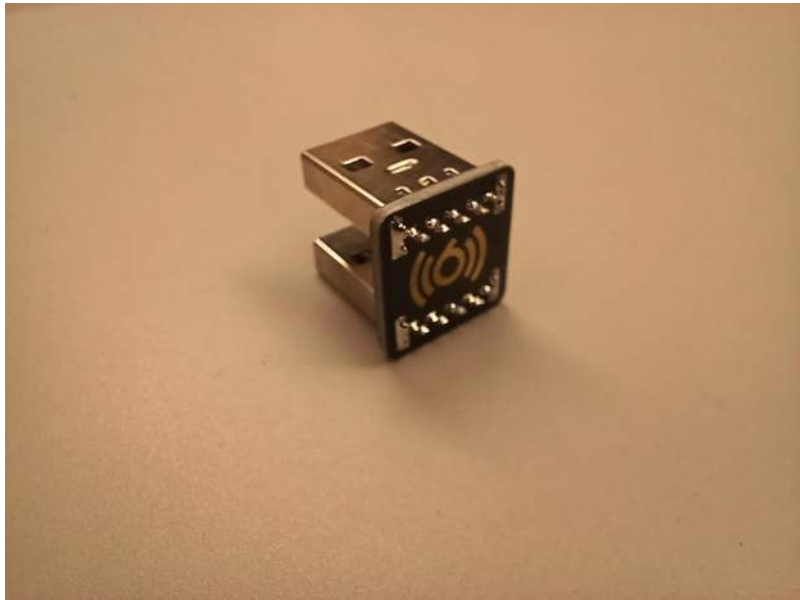
SJ3

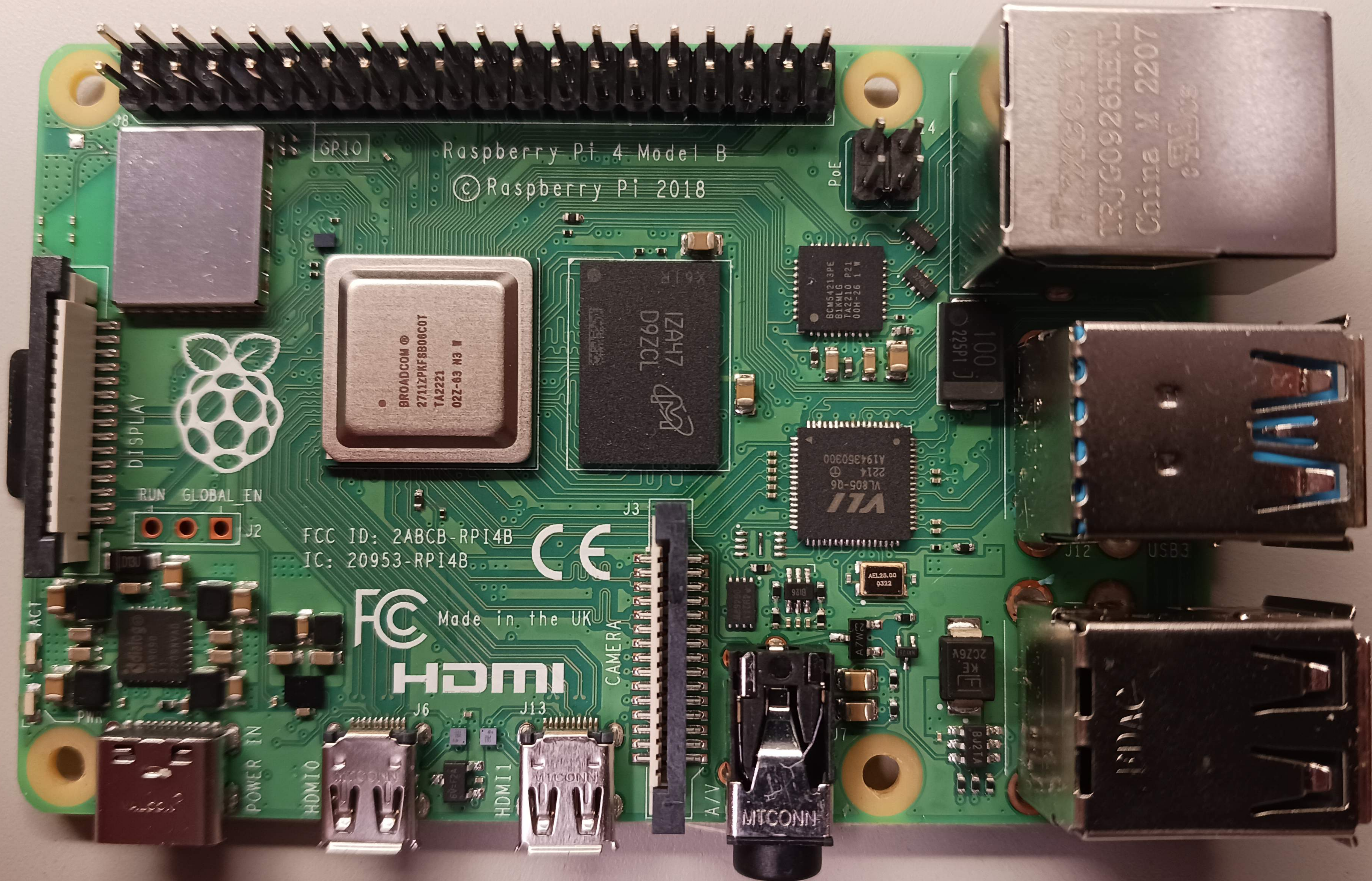
SJ4

SJ5

SJ6

SJ7





Raspberry Pi 4 Model B  
© Raspberry Pi 2018

BROADCOM  
2711ZPKF806C0T  
TA2221  
022-63 N3 W

1ZA47  
D9ZCL

BCM54213PE  
B1KMLG  
TA2210 P21  
00H-26 1 W

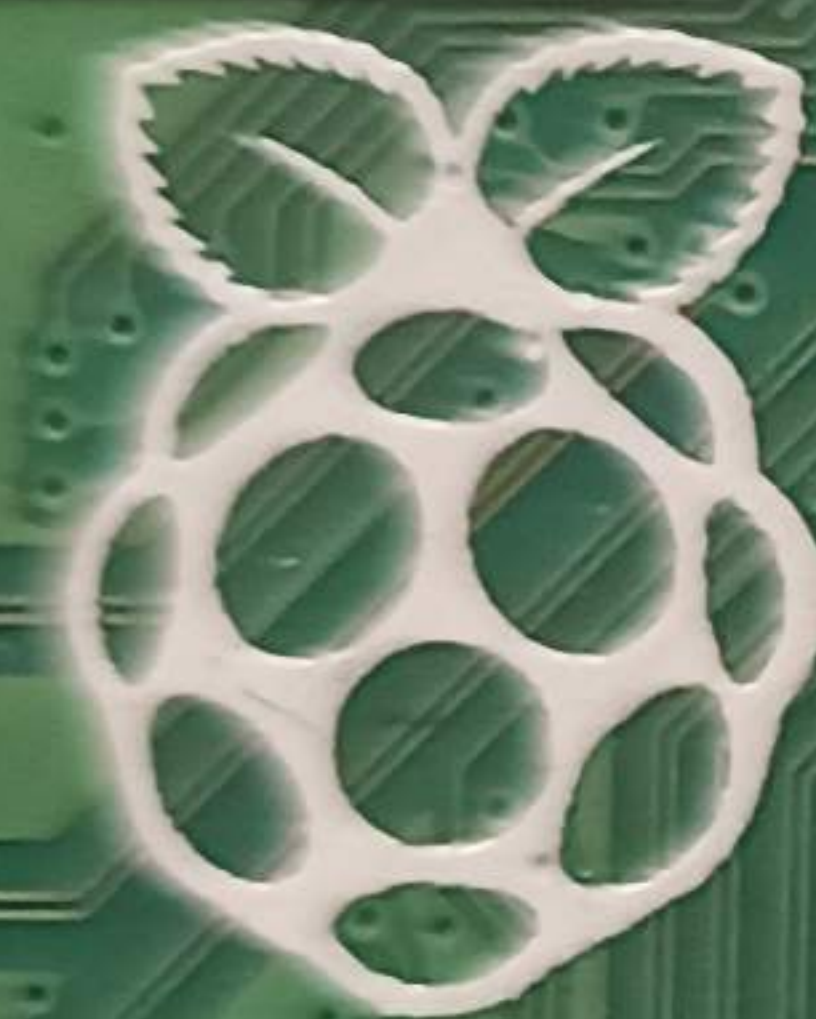
A194350300  
2214  
VL805-Q6  
VIA

FCC ID: 2ABCB-RPI4B  
IC: 20953-RPI4B



FCC  
Made in the UK

HDMI



RUN GLOBAL EN

J2

CAMERA

J6

J13

POWER IN

HDMI0

HDMI1

MITCONN

A/V

MITCONN

TRJG0926HEATL  
China M. 2207  
eFALUS

J12 USB3

J12 USB3

IFETEL: 2019LAB-ANCE4957  
KCC: R-C-P2R-RPI4B

Anatel: 06004-19-10629  
NTC: ESD-GEC-1920098C  
NCC: CCA019LP1120T2

UK  
CA



Uses Technology  
Licensed From  
Proant AB

PA® OC-138  
94V-0H 1.9

MICRO SD CARD

R 007-AH0184  
T D190067007

CMIIT ID: 2019AJ10494

TP27  
TP26  
TP19  
TP20  
TP18

TP34  
TP24  
TP23  
TP17  
TP10  
TP6  
TP3

TP2  
TP4  
TP5  
TP9

TP15  
TP8  
TP13

TP11  
TP14  
TP1  
TP7  
TP12

