

22121747

Pcpt Mech;Label; FCC/IC ID; T-Berd 5882  
(Applied to model TB-5882 model)

Note: First line is HVIN.

8

7

6

5

4

3

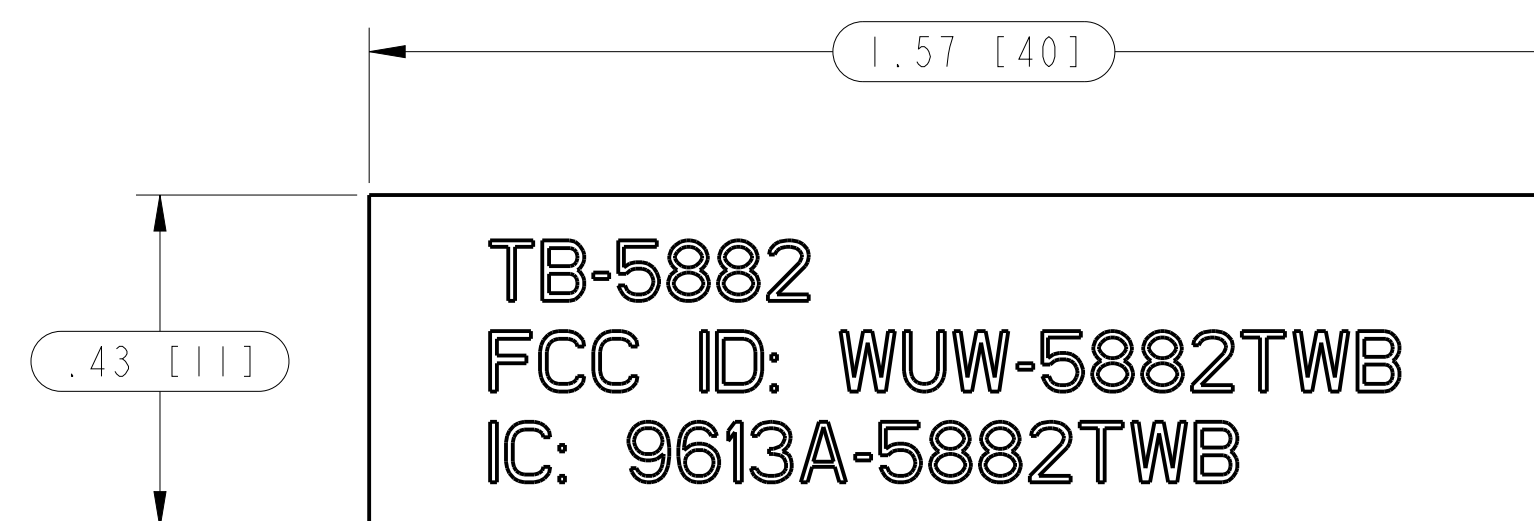
2

1

NOTES: (UNLESS OTHERWISE SPECIFIED)

- 1. DIMENSIONS IN BRACKETS ARE IN MILLIMETERS.
- 2. THE ELECTRONIC FILES (3D DATA FILES) SHALL BE USED FOR DIMENSIONAL CONTROL. THE INFORMATION PROVIDED HEREIN THE DRAWING IS FOR CLARIFICATION AND INSPECTION IN ACCORDANCE WITH TOLERANCE BLOCK.
- 3. MATERIAL - 0.010 [0,25] THICK MATTE POLYCARBONATE, BACKED WITH PERMANENT ACRYLIC ADHESIVE, 3M P/N 467-MP AND REMOVABLE LINER. VENDOR MARKING AND LABELING SYSTEM SHALL BE UL RECOGNIZED TO UL 969. TOTAL THICKNESS NOT TO EXCEED 0.012 [0,30].
- 4. NOMENCLATURE AND LINEWORK SHALL BE BLACK. BACKGROUND SHALL BE SILVER PER VIAVI SPECIFICATION 51-14120-XX, COLOR CHIP #44.
- 5. TEXT SIZE, FONT, AND SPACING AS SHOWN MAY DIFFER FROM COMPLETED PART.
- 6. PRINT PER VIAVI MASTER ARTWORK. SEE REVISION STATUS BLOCK FOR NUMBER AND CURRENT REVISION.
- 7. TOP SURFACE OF LABEL SHALL BE CONSIDERED THE PRIMARY SURFACE. COMPLETED PART SHALL CONFORM TO VIAVI VISUAL INSPECTION CRITERIA CP-QAD-ST040-93.
- 8. ALL PARTS ARE TO BE PERMANENTLY MARKED IN ACCORDANCE WITH VIAVI DOCUMENT 51-15433. PART IDENTIFICATION SHALL INCLUDE VIAVI PART NUMBER, DRAWING REVISION, VENDOR CODE AND MANUFACTURE LOT IDENTIFICATION (WW/YY). TEXT SIZE SHALL BE LEGIBLE. LOCATION SPECIFIED ON THE DRAWING CAN BE CHANGED PER SUPPLIER REQUEST AND VIAVI APPROVAL.
- 9. SUPPLIERS SHALL COMPLY WITH THE REQUIREMENTS OF VIAVI DOCUMENT 21151123, CUSTOM PART QUALITY REQUIREMENTS.
- 10. ALL BALLOONED DIMENSIONS ARE DESIGN CRITICAL AND REQUIRE INSPECTION.
- 11. MATERIAL AND FINISH SHALL COMPLY WITH EU DIRECTIVE 2011/65/EU (RoHS) AND EU REGULATION (EC) 1907/2006 (REACH). TO CONFIRM COMPLIANCE A COMPLETED VIAVI RoHS/REACH DATA FORM (VIAVI DOCUMENT 22017284) SHALL BE SUPPLIED FOR THE ITEM AND IS REQUIRED AS PART OF THE VIAVI ACCEPTANCE CRITERIA

| REVISIONS |     |                                |          |          |
|-----------|-----|--------------------------------|----------|----------|
| ZONE      | REV | DESCRIPTION                    | DATE     | APPROVED |
|           | 000 | INITIAL RELEASE PER ECO-044997 | 10/16/17 | RLH      |
|           | 001 | REVISED PER ECO-045107         | 10/24/17 | RLH      |
|           | 002 | REVISED PER ECO-045845         | 02/06/18 | RLH      |



| REVISION STATUS BLOCK |                            |                            |   |     |
|-----------------------|----------------------------|----------------------------|---|-----|
| NUMBER                | TITLE                      | NATIVE FILE                | EXPORT FILE   | REV |
| 22121747              | MANUFACTURING DATA PACKAGE | 22121747                   | 22121747_rev002.stp<br>22121747_rev002.pdf<br>22121747_rev002.dxf | 002 |
| 22121747              | ARTWORK DATA PACKAGE       | 22121747_rev002_artwork.ai | 22121747_rev002_artwork.pdf<br>22121747_rev002_artwork.eps        | 002 |

| ITEM   | QTY            | VIAVI PART NO  | VENDOR VENDOR PART NO | DESCRIPTION   | NOTES |                        |  |   |  |              |                |             |      |  |  |   |     |   |  |              |  |            |  |                               |  |                      |  |                                     |  |
|--|----------------|--|-----------------------|---|-------|------------------------|--|---|--|--------------|----------------|-------------|------|--|--|---|-----|---|--|--------------|--|------------|--|-------------------------------|--|----------------------|--|-------------------------------------|--|
| <table border="1"> <tr> <td colspan="2">THIRD ANGLE PROJECTION</td> <td colspan="2">UNLESS OTHERWISE SPECIFIED DIMENSIONS ARE IN INCHES TOLERANCES ARE:</td> <td colspan="2">CONTRACT NO.</td> </tr> <tr> <td colspan="2"> </td> <td colspan="2">           INCHES<br/>           FRACTIONS ± 1/64<br/>           DECIMALS .X ± .1<br/>.XX ± .01<br/>.XXX ± .005<br/>           MILLIMETERS<br/>           DECIMALS .X ± .25<br/>.XX ± .13<br/>           ANGLES ± 1/2°         </td> <td colspan="2">           APPROVALS<br/>           DRAWN R. HERNDON 05/24/17<br/>           CHECKED R. HERNDON 05/24/17<br/>           DESIGN         </td> </tr> <tr> <td colspan="2">           PROPRIETARY<br/>           ALL drawings, diagrams, specifications and other materials furnished by VIAVI and identified as PROPRIETARY, relating to the use and service of articles furnished hereunder and any information therein are proprietary to VIAVI. Such materials have been developed at great expense and they contain trade secrets of VIAVI. No reproduction or distribution of such materials, except as specifically permitted by VIAVI, is acceptable. All such materials relating to the articles supplied directly by VIAVI (except information as may be established to be in the public domain or disclosed personally to judicial government action) shall be received in confidence and the holder shall exercise reasonable care to hold such information in confidence. All such materials and the designs they cover shall remain the property of VIAVI and must be immediately returned to VIAVI upon request.         </td> <td colspan="2">           MATERIAL<br/> </td> <td colspan="2">           FINISH<br/> </td> </tr> <tr> <td colspan="2">           VIAVI PART NUMBER IS 22121747         </td> <td colspan="2">           DO NOT SCALE DRAWING         </td> <td colspan="2">           3D MODEL: 22121747.FCC-1C-1D-TB5882         </td> </tr> </table> |                |  |                       |   |       | THIRD ANGLE PROJECTION |  | UNLESS OTHERWISE SPECIFIED DIMENSIONS ARE IN INCHES TOLERANCES ARE: |  | CONTRACT NO. |                |             |      | INCHES<br>FRACTIONS ± 1/64<br>DECIMALS .X ± .1<br>.XX ± .01<br>.XXX ± .005<br>MILLIMETERS<br>DECIMALS .X ± .25<br>.XX ± .13<br>ANGLES ± 1/2° |  | APPROVALS<br>DRAWN R. HERNDON 05/24/17<br>CHECKED R. HERNDON 05/24/17<br>DESIGN |     | PROPRIETARY<br>ALL drawings, diagrams, specifications and other materials furnished by VIAVI and identified as PROPRIETARY, relating to the use and service of articles furnished hereunder and any information therein are proprietary to VIAVI. Such materials have been developed at great expense and they contain trade secrets of VIAVI. No reproduction or distribution of such materials, except as specifically permitted by VIAVI, is acceptable. All such materials relating to the articles supplied directly by VIAVI (except information as may be established to be in the public domain or disclosed personally to judicial government action) shall be received in confidence and the holder shall exercise reasonable care to hold such information in confidence. All such materials and the designs they cover shall remain the property of VIAVI and must be immediately returned to VIAVI upon request. |  | MATERIAL<br> |  | FINISH<br> |  | VIAVI PART NUMBER IS 22121747 |  | DO NOT SCALE DRAWING |  | 3D MODEL: 22121747.FCC-1C-1D-TB5882 |  |
| THIRD ANGLE PROJECTION   |                | UNLESS OTHERWISE SPECIFIED DIMENSIONS ARE IN INCHES TOLERANCES ARE:  |                       | CONTRACT NO.  |       |                        |  |   |  |              |                |             |      |  |  |   |     |   |  |              |  |            |  |                               |  |                      |  |                                     |  |
|  |                | INCHES<br>FRACTIONS ± 1/64<br>DECIMALS .X ± .1<br>.XX ± .01<br>.XXX ± .005<br>MILLIMETERS<br>DECIMALS .X ± .25<br>.XX ± .13<br>ANGLES ± 1/2° |                       | APPROVALS<br>DRAWN R. HERNDON 05/24/17<br>CHECKED R. HERNDON 05/24/17<br>DESIGN   |       |                        |  |   |  |              |                |             |      |  |  |   |     |   |  |              |  |            |  |                               |  |                      |  |                                     |  |
| PROPRIETARY<br>ALL drawings, diagrams, specifications and other materials furnished by VIAVI and identified as PROPRIETARY, relating to the use and service of articles furnished hereunder and any information therein are proprietary to VIAVI. Such materials have been developed at great expense and they contain trade secrets of VIAVI. No reproduction or distribution of such materials, except as specifically permitted by VIAVI, is acceptable. All such materials relating to the articles supplied directly by VIAVI (except information as may be established to be in the public domain or disclosed personally to judicial government action) shall be received in confidence and the holder shall exercise reasonable care to hold such information in confidence. All such materials and the designs they cover shall remain the property of VIAVI and must be immediately returned to VIAVI upon request.  |                | MATERIAL<br>   |                       | FINISH<br>  |       |                        |  |   |  |              |                |             |      |  |  |   |     |   |  |              |  |            |  |                               |  |                      |  |                                     |  |
| VIAVI PART NUMBER IS 22121747  |                | DO NOT SCALE DRAWING   |                       | 3D MODEL: 22121747.FCC-1C-1D-TB5882   |       |                        |  |   |  |              |                |             |      |  |  |   |     |   |  |              |  |            |  |                               |  |                      |  |                                     |  |
|  |                |  |                       | <table border="1"> <tr> <td colspan="2">VIAVI</td> <td colspan="2">LABEL, FCC/IC IDENTIFICATION, T-BERD 5882</td> </tr> <tr> <td>SIZE</td> <td>CODE IDENT NO.</td> <td>DRAWING NO.</td> <td>REV.</td> </tr> <tr> <td>D</td> <td></td> <td>22121747</td> <td>002</td> </tr> </table> |       | VIAVI                  |  | LABEL, FCC/IC IDENTIFICATION, T-BERD 5882                           |  | SIZE         | CODE IDENT NO. | DRAWING NO. | REV. | D  |  | 22121747  | 002 |   |  |              |  |            |  |                               |  |                      |  |                                     |  |
| VIAVI  |                | LABEL, FCC/IC IDENTIFICATION, T-BERD 5882  |                       |   |       |                        |  |   |  |              |                |             |      |  |  |   |     |   |  |              |  |            |  |                               |  |                      |  |                                     |  |
| SIZE   | CODE IDENT NO. | DRAWING NO.  | REV.                  |   |       |                        |  |   |  |              |                |             |      |  |  |   |     |   |  |              |  |            |  |                               |  |                      |  |                                     |  |
| D  |                | 22121747   | 002                   |   |       |                        |  |   |  |              |                |             |      |  |  |   |     |   |  |              |  |            |  |                               |  |                      |  |                                     |  |
|  |                |  |                       | SCALE 4,000 SHEET 1 OF 1  |       |                        |  |   |  |              |                |             |      |  |  |   |     |   |  |              |  |            |  |                               |  |                      |  |                                     |  |

8

7

6

5

4

3

2

1

TB-5882  
FCC ID: WUW-5882TWB  
IC: 9613A-5882TWB

## **COLOR INFORMATION:**

(PER VIAVI/JDSU/ACTERNA COLOR SPECIFICATIONS 51-14120-XX )

Gray Area - COLOR CHIP #44 per 51-14120-XX

Nomenclature & Linework - Black

### **PROPRIETARY**

All drawings, diagrams, specifications and other materials furnished by VIAVI and identified as PROPRIETARY, relating to the use and service of articles furnished hereunder and any information therein are proprietary to VIAVI. Such materials have been developed at great expense and they contain trade secrets of VIAVI. No reproduction or distribution of such materials, except as specifically permitted by VIAVI, is acceptable. All such materials relating to the articles supplied directly by VIAVI (except information as may be established to be in the public domain or disclosed personally to judicial government action) shall be received in confidence and the holder shall exercise reasonable care to hold such information in confidence. All such materials and the designs they cover shall remain the property of VIAVI and must be immediately returned to VIAVI upon request.

## **VIAVI MASTER ARTWORK**

Viavi P/N: 22121747      Sheet 1 of 1

Revision: 002

Title: Label, FCC/IC ID, T-Berd 5882

Filename: 22121747\_rev002\_Artwork.ai

22121748

Pcpt Mech;Label; FCC/IC ID; MTS 5882  
(Applied to model MTS-5882)

Note: First line is HVIN.

8

7

6

5

4

3

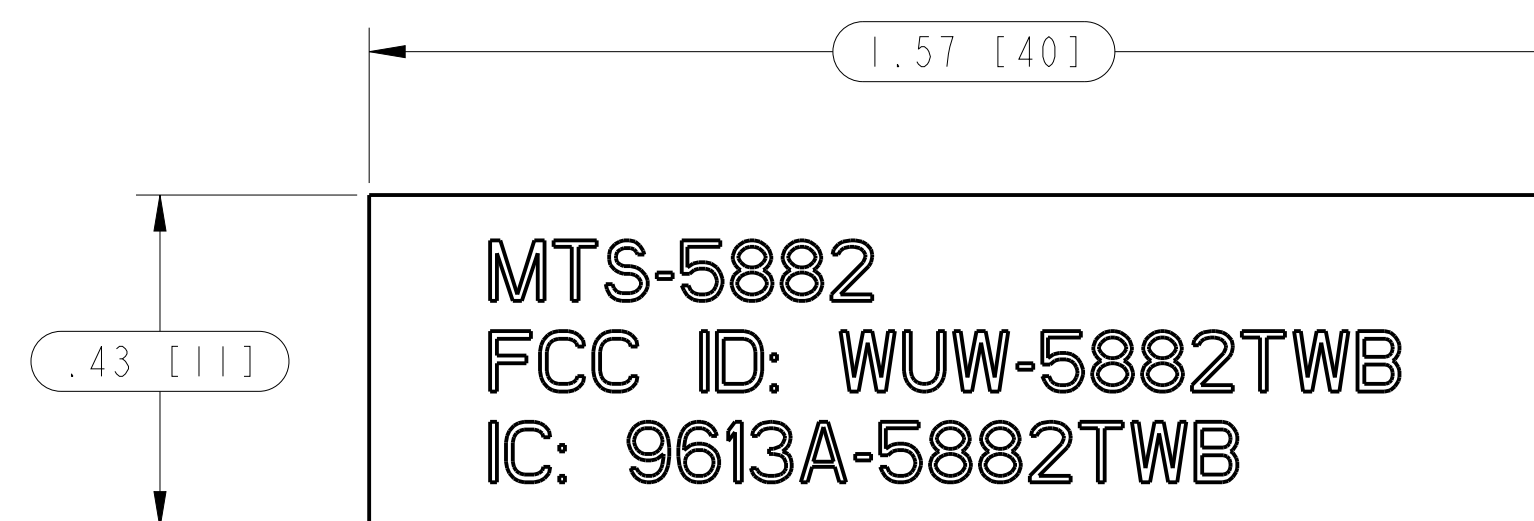
2

1

NOTES: (UNLESS OTHERWISE SPECIFIED)

- 1. DIMENSIONS IN BRACKETS ARE IN MILLIMETERS.
- 2. THE ELECTRONIC FILES (3D DATA FILES) SHALL BE USED FOR DIMENSIONAL CONTROL. THE INFORMATION PROVIDED HEREIN THE DRAWING IS FOR CLARIFICATION AND INSPECTION IN ACCORDANCE WITH TOLERANCE BLOCK.
- 3. MATERIAL - 0.010 [0,25] THICK MATTE POLYCARBONATE, BACKED WITH PERMANENT ACRYLIC ADHESIVE, 3M P/N 467-MP AND REMOVABLE LINER. VENDOR MARKING AND LABELING SYSTEM SHALL BE UL RECOGNIZED TO UL 969. TOTAL THICKNESS NOT TO EXCEED 0.012 [0,30].
- 4. NOMENCLATURE AND LINEWORK SHALL BE BLACK. BACKGROUND SHALL BE SILVER PER VIAVI SPECIFICATION 51-14120-XX, COLOR CHIP #44.
- 5. TEXT SIZE, FONT, AND SPACING AS SHOWN MAY DIFFER FROM COMPLETED PART.
- 6. PRINT PER VIAVI MASTER ARTWORK. SEE REVISION STATUS BLOCK FOR NUMBER AND CURRENT REVISION.
- 7. TOP SURFACE OF LABEL SHALL BE CONSIDERED THE PRIMARY SURFACE. COMPLETED PART SHALL CONFORM TO VIAVI VISUAL INSPECTION CRITERIA CP-QAD-ST040-93.
- 8. ALL PARTS ARE TO BE PERMANENTLY MARKED IN ACCORDANCE WITH VIAVI DOCUMENT 51-15433. PART IDENTIFICATION SHALL INCLUDE VIAVI PART NUMBER, DRAWING REVISION, VENDOR CODE AND MANUFACTURE LOT IDENTIFICATION (WW/YY). TEXT SIZE SHALL BE LEGIBLE. LOCATION SPECIFIED ON THE DRAWING CAN BE CHANGED PER SUPPLIER REQUEST AND VIAVI APPROVAL.
- 9. SUPPLIERS SHALL COMPLY WITH THE REQUIREMENTS OF VIAVI DOCUMENT 21151123, CUSTOM PART QUALITY REQUIREMENTS.
- 10. ALL BALLOONED DIMENSIONS ARE DESIGN CRITICAL AND REQUIRE INSPECTION.
- 11. MATERIAL AND FINISH SHALL COMPLY WITH EU DIRECTIVE 2011/65/EU (RoHS) AND EU REGULATION (EC) 1907/2006 (REACH). TO CONFIRM COMPLIANCE A COMPLETED VIAVI RoHS/REACH DATA FORM (VIAVI DOCUMENT 22017284) SHALL BE SUPPLIED FOR THE ITEM AND IS REQUIRED AS PART OF THE VIAVI ACCEPTANCE CRITERIA

| REVISIONS |     |                                |          |          |
|-----------|-----|--------------------------------|----------|----------|
| ZONE      | REV | DESCRIPTION                    | DATE     | APPROVED |
|           | 000 | INITIAL RELEASE PER ECO-044997 | 10/16/17 | RLH      |
|           | 001 | REVISED PER ECO-045107         | 10/24/17 | RLH      |
|           | 002 | REVISED PER ECO-045845         | 02/06/18 | RLH      |



| REVISION STATUS BLOCK |                            |                            |   |     |
|-----------------------|----------------------------|----------------------------|---|-----|
| NUMBER                | TITLE                      | NATIVE FILE                | EXPORT FILE   | REV |
| 22121748              | MANUFACTURING DATA PACKAGE | 22121748                   | 22121748_rev002.stp<br>22121748_rev002.pdf<br>22121748_rev002.dxf | 002 |
| 22121748              | ARTWORK DATA PACKAGE       | 22121748_rev002_artwork.ai | 22121748_rev002_artwork.pdf<br>22121748_rev002_artwork.eps        | 002 |

| ITEM                                 | QTY                                 | VIAVI PART NO          | VENDOR VENDOR PART NO   | DESCRIPTION  | NOTES               |          |        |                  |                                     |        |             |                       |        |  |  |           |      |                  |          |                    |          |        |  |   |  |
|--------------------------------------|-------------------------------------|------------------------|---|--|---------------------|----------|--------|------------------|-------------------------------------|--------|-------------|-----------------------|--------|--|--|-----------|------|------------------|----------|--------------------|----------|--------|--|---|--|
| <p>THIRD ANGLE PROJECTION</p>        |                                     |                        |   |  |                     |          |        |                  |                                     |        |             |                       |        |  |  |           |      |                  |          |                    |          |        |  |   |  |
| <p>VIAVI PART NUMBER IS 22121748</p> |                                     |                        | <p>UNLESS OTHERWISE SPECIFIED DIMENSIONS ARE IN INCHES TOLERANCES ARE:</p> <table border="1"> <tr> <th>INCHES</th> <th>DECIMALS</th> <th>ANGLES</th> </tr> <tr> <td>FRACTIONS ± 1/64</td> <td>.X ± .1<br/>.XX ± .01<br/>.XXX ± .005</td> <td>± 1/2°</td> </tr> <tr> <th>MILLIMETERS</th> <td>.X ± .25<br/>.XX ± .13</td> <td>± 1/2°</td> </tr> </table> |  | INCHES              | DECIMALS | ANGLES | FRACTIONS ± 1/64 | .X ± .1<br>.XX ± .01<br>.XXX ± .005 | ± 1/2° | MILLIMETERS | .X ± .25<br>.XX ± .13 | ± 1/2° | <p>CONTRACT NO.</p> <table border="1"> <tr> <th>APPROVALS</th> <th>DATE</th> </tr> <tr> <td>DRAWN R. HERNDON</td> <td>05/24/17</td> </tr> <tr> <td>CHECKED R. HERNDON</td> <td>05/24/17</td> </tr> <tr> <td>DESIGN</td> <td></td> </tr> </table> |  | APPROVALS | DATE | DRAWN R. HERNDON | 05/24/17 | CHECKED R. HERNDON | 05/24/17 | DESIGN |  | <p><b>VIAVI</b></p> <p>LABEL, FCC/IC IDENTIFICATION, MTS 5882</p> |  |
| INCHES                               | DECIMALS                            | ANGLES                 |   |  |                     |          |        |                  |                                     |        |             |                       |        |  |  |           |      |                  |          |                    |          |        |  |   |  |
| FRACTIONS ± 1/64                     | .X ± .1<br>.XX ± .01<br>.XXX ± .005 | ± 1/2°                 |   |  |                     |          |        |                  |                                     |        |             |                       |        |  |  |           |      |                  |          |                    |          |        |  |   |  |
| MILLIMETERS                          | .X ± .25<br>.XX ± .13               | ± 1/2°                 |   |  |                     |          |        |                  |                                     |        |             |                       |        |  |  |           |      |                  |          |                    |          |        |  |   |  |
| APPROVALS                            | DATE                                |                        |   |  |                     |          |        |                  |                                     |        |             |                       |        |  |  |           |      |                  |          |                    |          |        |  |   |  |
| DRAWN R. HERNDON                     | 05/24/17                            |                        |   |  |                     |          |        |                  |                                     |        |             |                       |        |  |  |           |      |                  |          |                    |          |        |  |   |  |
| CHECKED R. HERNDON                   | 05/24/17                            |                        |   |  |                     |          |        |                  |                                     |        |             |                       |        |  |  |           |      |                  |          |                    |          |        |  |   |  |
| DESIGN                               |                                     |                        |   |  |                     |          |        |                  |                                     |        |             |                       |        |  |  |           |      |                  |          |                    |          |        |  |   |  |
| <p>MATERIAL</p> <p>3</p>             |                                     | <p>FINISH</p> <p>4</p> |   | <p>NATIVE CAD SYSTEM: PRO-E</p> <p>CAD FILENAMES:</p> <p>DRAWING: 22121748</p> |                     |          |        |                  |                                     |        |             |                       |        |  |  |           |      |                  |          |                    |          |        |  |   |  |
| <p>DO NOT SCALE DRAWING</p>          |                                     |                        | <p>3D MODEL: 22121748-FCC-IC-10_MTS5882</p>   |  | <p>SCALE 4, 000</p> |          |        |                  |                                     |        |             |                       |        |  |  |           |      |                  |          |                    |          |        |  |   |  |
|                                      |                                     |                        |   | <p>SIZE CODE IDENT NO. DRAWING NO.</p> <p>D 22121748</p>                       | <p>REV. 002</p>     |          |        |                  |                                     |        |             |                       |        |  |  |           |      |                  |          |                    |          |        |  |   |  |
|                                      |                                     |                        |   | <p>SHEET 1 OF 1</p>  |                     |          |        |                  |                                     |        |             |                       |        |  |  |           |      |                  |          |                    |          |        |  |   |  |

8

7

6

5

4

3

2

1

MTS-5882  
FCC ID: WUW-5882TWB  
IC: 9613A-5882TWB

## **COLOR INFORMATION:**

(PER VIAVI/JDSU/ACTERNA COLOR SPECIFICATIONS 51-14120-XX )

Gray Area - COLOR CHIP #44 per 51-14120-XX

Nomenclature & Linework - Black

### **PROPRIETARY**

All drawings, diagrams, specifications and other materials furnished by VIAVI and identified as PROPRIETARY, relating to the use and service of articles furnished hereunder and any information therein are proprietary to VIAVI. Such materials have been developed at great expense and they contain trade secrets of VIAVI. No reproduction or distribution of such materials, except as specifically permitted by VIAVI, is acceptable. All such materials relating to the articles supplied directly by VIAVI (except information as may be established to be in the public domain or disclosed personally to judicial government action) shall be received in confidence and the holder shall exercise reasonable care to hold such information in confidence. All such materials and the designs they cover shall remain the property of VIAVI and must be immediately returned to VIAVI upon request.

## **VIAVI MASTER ARTWORK**

Viavi P/N: 22121748      Sheet 1 of 1

Revision: 002

Title: Label, FCC/IC ID, MTS 5882

Filename: 22121748\_rev002\_Artwork.ai

21153783-001  
Label Product T-Berd 5800  
(Applied to model TB-5882)

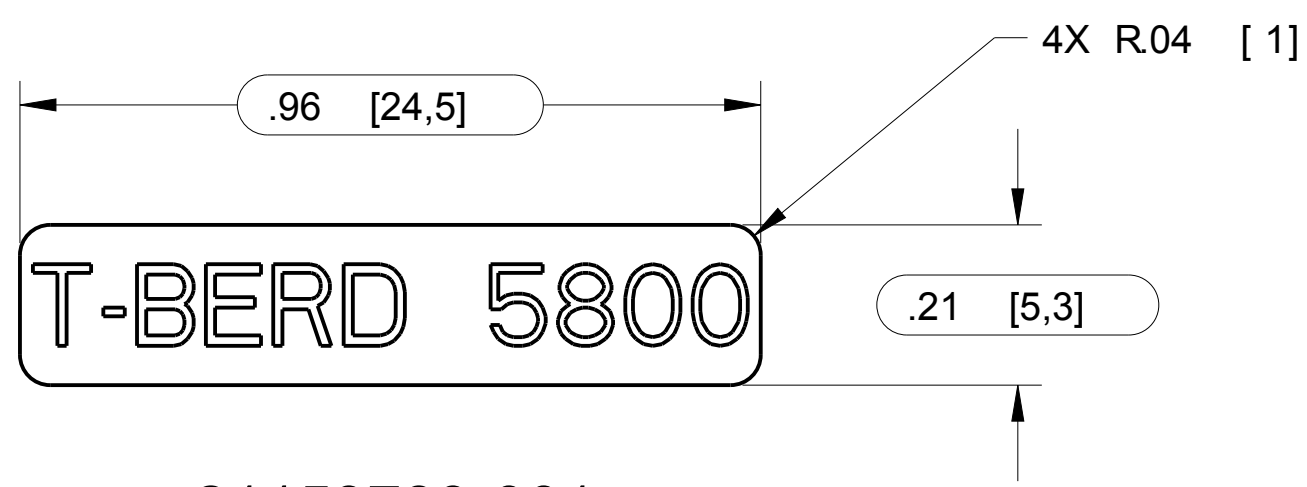
&

21153783-002  
Label Product MTS 5800  
(Applied to model MTS-5882)

**NOTES:** (UNLESS OTHERWISE SPECIFIED)

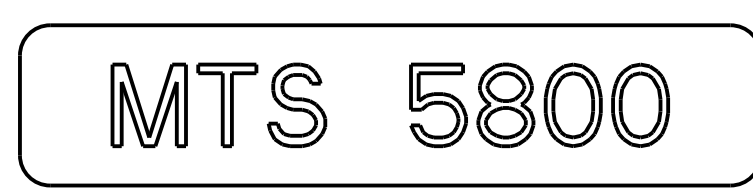
| REVISIONS |     |                         |          |          |
|-----------|-----|-------------------------|----------|----------|
| ZONE      | REV | DESCRIPTION             | DATE     | APPROVED |
|           | 000 | RELEASED PER CP #112073 | 09/14/10 | OH       |
|           | 001 | REVISED PER CP #115687  | 01/25/11 | OH       |
|           | 002 | REVISED PER CP #116697  | 03/02/11 | OH       |
|           | 003 | REVISED PER CP #118150  | 04/14/11 | OH       |

- DIMENSIONS IN BRACKETS ARE IN MILLIMETERS.
- THE ELECTRONIC FILES (3D DATA FILES) SHALL BE USED FOR DIMENSIONAL CONTROL. THE INFORMATION PROVIDED HEREIN THE DRAWING IS FOR CLARIFICATION AND INSPECTION IN ACCORDANCE WITH TOLERANCE BLOCK.
- MATERIAL: 0.010 [0,25] THICK MATTE POLYCARBONATE, BACKED WITH PERMANENT ACRYLIC ADHESIVE, 3M P/N 467-MP AND REMOVABLE LINER. MARKING AND LABELING SYSTEM SHALL BE UL RECOGNIZED TO UL 969. TOTAL THICKNESS NOT TO EXCEED 0.012 [0,30].
- NOMENCLATURE SHALL BE WHITE. BACKGROUND SHALL BE PURPLE PER JDSU SPECIFICATION 51-14120-XX, COLOR CHIP #135 (RAL 290/20/20).
- TEXT SIZE, FONT, AND SPACING AS SHOWN MAY DIFFER FROM COMPLETED PART.
- PRINT PER JDSU MASTER ARTWORK. SEE REVISION STATUS BLOCK FOR NUMBER AND CURRENT REVISION.
- TOP SURFACE OF LABEL SHALL BE CONSIDERED THE PRIMARY SURFACE. COMPLETED PART SHALL CONFORM TO JDSU VISUAL INSPECTION CRITERIA CP-QAD-ST040-93.
- ALL PARTS ARE TO BE PERMANENTLY MARKED IN ACCORDANCE WITH JDSU DOCUMENT 51-15433. PART IDENTIFICATION SHALL INCLUDE JDSU PART NUMBER, DRAWING REVISION, VENDOR CODE AND MANUFACTURE LOT IDENTIFICATION (WW/YY). TEXT SIZE SHALL BE LEGIBLE. LOCATION SPECIFIED ON THE DRAWING CAN BE CHANGED PER SUPPLIER REQUEST AND JDSU APPROVAL.
- SUPPLIERS SHALL COMPLY WITH THE REQUIREMENTS OF JDSU DOCUMENT 21151123, CUSTOM PART QUALITY REQUIREMENTS.
- ALL BALLOONED DIMENSIONS ARE DESIGN CRITICAL AND REQUIRE INSPECTION.



21153783-001

DIMENSIONS TYPICAL BOTH PARTS



21153783-002

| JDSU PART NUMBER | DESCRIPTION                    |
|------------------|--------------------------------|
| 21153783-001     | LABEL, PRODUCT ID, T-BERD 5800 |
| 21153783-002     | LABEL, PRODUCT ID, MTS 5800    |

| REVISION STATUS BLOCK |                            |                            |   |     |
|-----------------------|----------------------------|----------------------------|---|-----|
| NUMBER                | TITLE                      | NATIVE FILE                | EXPORT FILE   | REV |
| 21153783-001          | MANUFACTURING DATA PACKAGE | 21153783_REV003            | 21153783_REV003.stp<br>21153783_REV003.pdf<br>21153783_REV003.dxf | 003 |
| 21153783-001          | ARTWORK DATA PACKAGE       | 21153783_REV003_artwork.ai | 21153783_REV003_artwork.pdf<br>21153783_REV003_artwork.eps        | 003 |
| 21153783-002          | MANUFACTURING DATA PACKAGE | 21153783_REV003            | 21153783_REV003.stp<br>21153783_REV003.pdf<br>21153783_REV003.dxf | 003 |
| 21153783-002          | ARTWORK DATA PACKAGE       | 21153783_REV003_artwork.ai | 21153783_REV003_artwork.pdf<br>21153783_REV003_artwork.eps        | 003 |

**PROPRIETARY**  
 ALL drawings, diagrams, specifications and other materials furnished by JDSU and identified as PROPRIETARY, relating to the use and service of articles furnished hereunder and any information therein are proprietary to JDSU. Such materials have been developed at great expense and they contain trade secrets of JDSU. No reproduction or distribution of such materials, except as specifically permitted by JDSU, is acceptable. All such materials relating to the articles supplied directly by JDSU (except information as may be established to be in the public domain or disclosed personally to judicial government action) shall be received in confidence and the holder shall exercise reasonable care to hold such information in confidence. All such materials and the designs they cover shall remain the property of JDSU and must be immediately returned to JDSU upon request.

|                        |  |   |  |   |  |   |  |
|------------------------|--|---|--|---|--|---|--|
| THIRD ANGLE PROJECTION |  | UNLESS OTHERWISE SPECIFIED DIMENSIONS ARE IN INCHES TOLERANCES ARE:     |  | CONTRACT NO.  |  |   |  |
|                        |  | INCHES<br>FRACTIONS ± 1/64    DECIMALS .X± .1<br>.XX± .01    .XXX± .005 |  | APPROVALS<br>DRAWN R. HERNDON    DATE 09/14/10<br>CHECKED O. HARARI    09/14/10<br>DESIGN |  |   |  |
| MATERIAL               |  | MILLIMETERS<br>DECIMALS .X± .25<br>.XX± .13                             |  | NATIVE CAD SYSTEM: PRO-E<br>CAD FILENAMES:<br>DRAWING: 21153783_REV003                    |  | SIZE <b>D</b> CODE IDENT NO.    DRAWING NO. <b>21153783</b> REV. <b>003</b> |  |
| FINISH                 |  | ANGLES ± 1/2  |  | DO NOT SCALE DRAWING    3D MODEL: 21153783_MICROME_NAME_LABEL                             |  | SCALE 1/1    SHEET 1 OF 1   |  |



T-BERD 5800

21153783-001

MTS 5800

21153783-002

**COLOR INFORMATION:**

(PER JDSU COLOR SPECIFICATIONS 51-14120-XX & 51-50200-XX)

Purple Area - Color Chip #135 per 51-14120-XX (RAL 290/20/20)

Nomenclature & Linework - White

**JDSU MASTER ARTWORK  
21153783 SHEET 1 of 1  
REVISION 003**

**PROPRIETARY**

ALL drawings, diagrams, specifications and other materials furnished by JDSU and identified as PROPRIETARY, relating to the use and service of articles furnished hereunder and any information therein are proprietary to JDSU. Such materials have been developed at great expense and they contain trade secrets of JDSU. No reproduction or distribution of such materials, except as specifically permitted by JDSU, is acceptable. All such materials relating to the articles supplied, directly by JDSU (except information as may be established to be in the public domain or disclosed personally to judicial government action) shall be received in confidence and the holder shall exercise reasonable care to hold such information in confidence. All such materials and the designs they cover shall remain the property of JDSU and must be immediately returned to JDSU upon request.

**Filename: 21153783\_rev003\_Artwork.ai**

**JDSU P/N: 21153783**

**Title: Artwork, Label, Product ID, TB/MTS-5800**

22121818

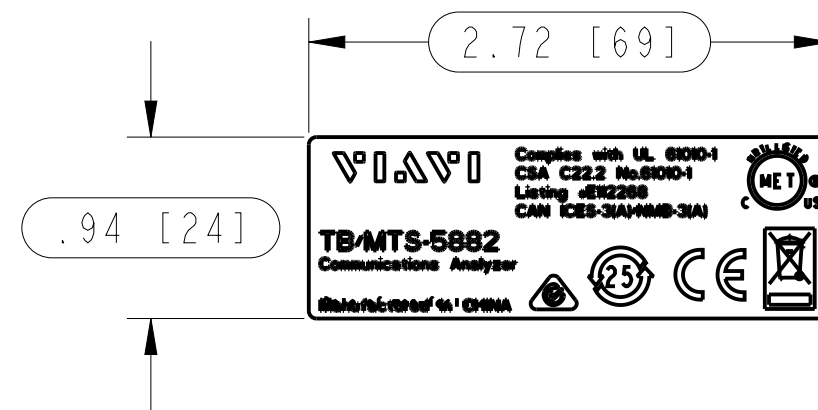
Label;Compliance; T-Berd/MTS 5882  
(Applied to all models)

8 7 6 5 4 3 2 1

**NOTES:** (UNLESS OTHERWISE SPECIFIED)

1. DIMENSIONS IN BRACKETS ARE IN MILLIMETERS.
2. THE ELECTRONIC FILES (3D DATA FILES) SHALL BE USED FOR DIMENSIONAL CONTROL. THE INFORMATION PROVIDED HEREIN THE DRAWING IS FOR CLARIFICATION AND INSPECTION IN ACCORDANCE WITH TOLERANCE BLOCK.
3. MATERIAL: FASSON PN 77922 (TC/S8025/50#SCK), MADE OF 2 MIL [0.05] MATTE CHROME POLYESTER TC, BACKED WITH S8025 CLEAR PERMANENT SOLVENT ACRYLIC PRESSURE SENSITIVE ADHESIVE, AND 50#SCK REMOVABLE LINER. THE LABEL SHALL BE OVERLAMINATED WITH .001 [0.03] POLYESTER. TOTAL THICKNESS SHALL NOT EXCEED .007 [0.18].
4. NOMENCLATURE AND LINWORK SHALL BE BLACK. BACKGROUND SHALL BE SILVER PER VIAVI SPECIFICATION 51-14120-XX, COLOR CHIP #44.
5. TEXT SIZE, FONT, AND SPACING AS SHOWN MAY DIFFER FROM COMPLETED PART.
6. PRINT PER VIAVI MASTER ARTWORK. SEE REVISION STATUS BLOCK FOR NUMBER AND CURRENT REVISION.
7. TOP SURFACE OF LABEL SHALL BE CONSIDERED THE PRIMARY SURFACE. COMPLETED PART SHALL CONFORM TO VIAVI VISULA INSPECTION CRITERIA CP-QAD-ST040-93.
8. ALL PARTS ARE TO BE PERMANENTLY MARKED IN ACCORDANCE WITH VIAVI DOCUMENT 51-15433. PART IDENTIFICATION SHALL INCLUDE VIAVI PART NUMBER, DRAWING REVISION, VENDOR CODE AND MANUFACTURE LOT IDENTIFICATION (WW/YY). TEXT SIZE SHALL BE LEGIBLE. LOCATION SPECIFIED ON THE DRAWING CAN BE CHANGED PER SUPPLIER REQUEST AND VIAVI APPROVAL.
9. SUPPLIERS SHALL COMPLY WITH THE REQUIREMENTS OF VIAVI DOCUMENT 21151123, CUSTOM PART QUALITY REQUIREMENTS.
10. ALL BALLOONED DIMENSIONS ARE DESIGN CRITICAL AND REQUIRE INSPECTION.
11. MATERIAL AND FINISH SHALL COMPLY WITH EU DIRECTIVE 2011/65/EU (RoHS) AND EU REGULATION (EC) 1907/2006 (REACH) IAW VIAVI DOCUMENT 22017284 ACCEPTANCE CRITERIA.

| REVISIONS |     |                                |          |          |
|-----------|-----|--------------------------------|----------|----------|
| ZONE      | REV | DESCRIPTION                    | DATE     | APPROVED |
|           | 000 | INITIAL RELEASE PER ECO-044997 | 10/16/17 | RLH      |
|           | 001 | REVISED PER ECO-045097         | 10/23/17 | RLH      |
|           | 002 | REVISED PER ECO-045773         | 01/29/18 | RLH      |



| REVISION STATUS BLOCK |                            |                            |   |     |
|-----------------------|----------------------------|----------------------------|---|-----|
| NUMBER                | TITLE                      | NATIVE FILE                | EXPORT FILE   | REV |
| 22121818              | MANUFACTURING DATA PACKAGE | 22121818                   | 22121818_rev002.stp<br>22121818_rev002.pdf<br>22121818_rev002.dxf | 002 |
| 22121818              | ARTWORK DATA PACKAGE       | 22121818_rev002_artwork.ai | 22121818_rev002_artwork.pdf<br>22121818_rev002_artwork.eps        | 002 |

VIAVI PART NUMBER IS 22121818

**PROPRIETARY**  
 ALL drawings, diagrams, specifications and other materials furnished by VIAVI and identified as PROPRIETARY, relating to the use and service of articles furnished hereunder and any information therein are proprietary to VIAVI. Such materials have been developed at great expense and they contain trade secrets of VIAVI. No reproduction or distribution of such materials, except as specifically permitted by VIAVI, is acceptable. All such materials relating to the articles supplied directly by VIAVI (except information as may be established to be in the public domain or disclosed personally to judicial government action) shall be received in confidence and the holder shall exercise reasonable care to hold such information in confidence. All such materials and the designs they cover shall remain the property of VIAVI and must be immediately returned to VIAVI upon request.

| ITEM  | QTY | VIAVI PART NO | VENDOR VENDOR PART NO                    | DESCRIPTION | NOTES |
|---|-----|---------------|--|-------------|-------|
| THIRD ANGLE PROJECTION  |     |               |  |             |       |
| UNLESS OTHERWISE SPECIFIED DIMENSIONS ARE IN INCHES TOLERANCES ARE: |     |               | CONTRACT NO.                             |             |       |
| INCHES  |     |               | APPROVALS                                |             |       |
| FRACTIONS ± 1/64  |     |               | DRAWN R. Herndon 05/24/17                |             |       |
| DECIMALS .X ± .1<br>.XX ± .01<br>.XXX ± .005                        |     |               | CHECKED R. Herndon 05/24/17              |             |       |
| ANGLES ± 1/2°   |     |               | DESIGN                                   |             |       |
| MILLIMETERS   |     |               | NATIVE CAD SYSTEM: PRO-E                 |             |       |
| FINISH  |     |               | CAD FILENAMES:                           |             |       |
|   |     |               | DRAWING: 22121818                        |             |       |
| DO NOT SCALE DRAWING  |     |               | 3D MODEL: 22121818.LBL_COMPLIANCE_TBS882 |             |       |
| SCALE 1/1   |     | SHEET 1 OF 1  |  | REV. 002    |       |

**VIAVI**  
 LABEL, PRODUCT COMPLIANCE, T-BERD/MTS 5882

8 7 6 5 4 3 2 1



## **COLOR INFORMATION:**

(PER VIAVI/JDSU/ACTERNA COLOR SPECIFICATIONS 51-14120-XX )

Gray Area - COLOR CHIP #44 per 51-14120-XX

Nomenclature & Linework - Black

### **PROPRIETARY**

All drawings, diagrams, specifications and other materials furnished by VIAVI and identified as PROPRIETARY, relating to the use and service of articles furnished hereunder and any information therein are proprietary to VIAVI. Such materials have been developed at great expense and they contain trade secrets of VIAVI. No reproduction or distribution of such materials, except as specifically permitted by VIAVI, is acceptable. All such materials relating to the articles supplied directly by VIAVI (except information as may be established to be in the public domain or disclosed personally to judicial government action) shall be received in confidence and the holder shall exercise reasonable care to hold such information in confidence. All such materials and the designs they cover shall remain the property of VIAVI and must be immediately returned to VIAVI upon request.

## **VIAVI MASTER ARTWORK**

**Viavi P/N: 22121818      Sheet 1 of 1**

**Revision: 002**

**Title: Label, Compliance, T-Berd/MTS 5882**

**Filename: 22121818\_rev002\_Artwork.ai**