

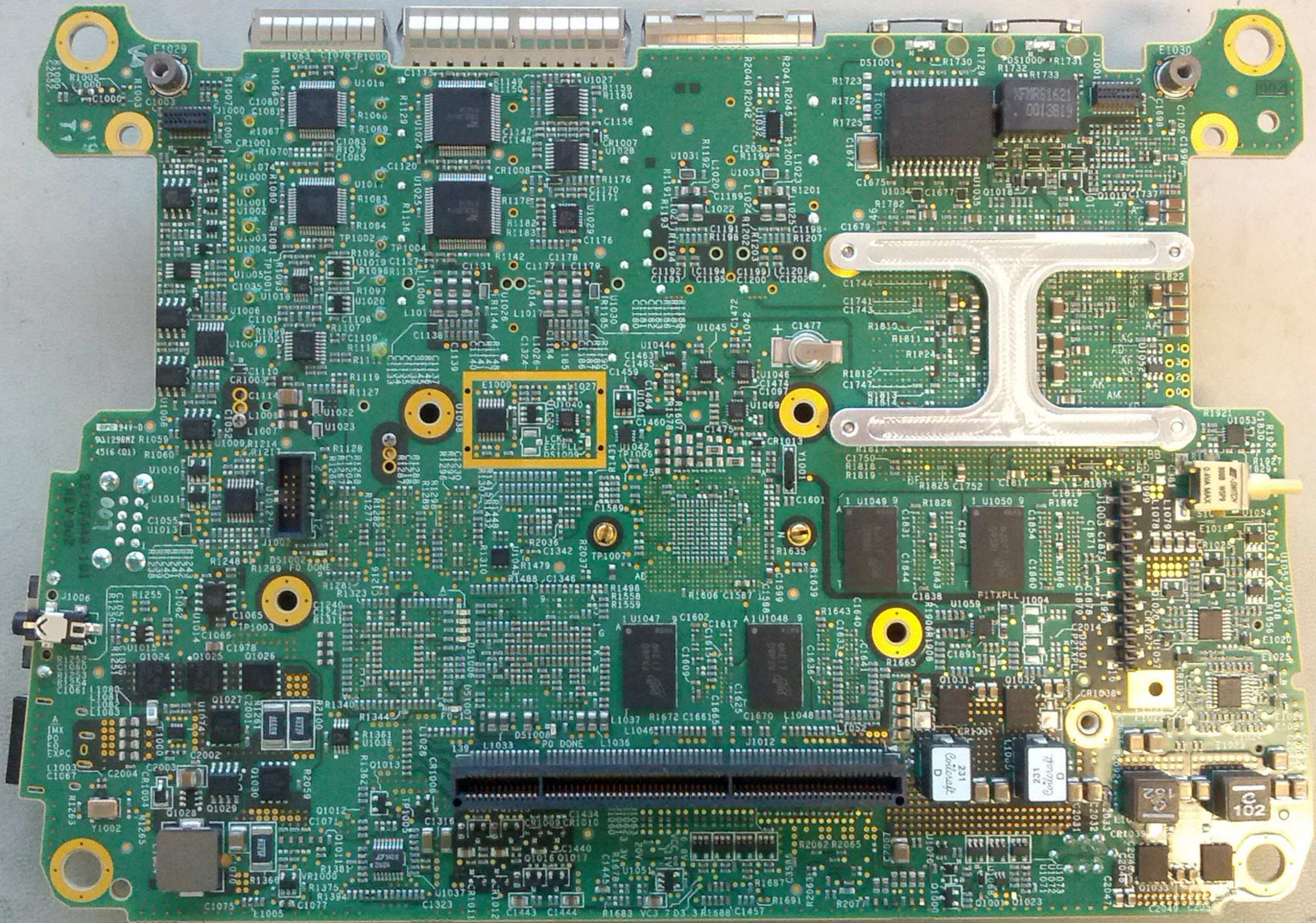
16135

13514

WMSA0124580007
22107449-001 REV012
Pb-free
126-HF-b4-e1-e2

LINEAR
LTM8055Y
µModule
N3M602S 1818MH

VIA
ETHERNET



JDSU

U1

LSR Model: TIWI-BLE
P/N: 450-0064 R5
FCC ID: TFB-TIW11-01
IC: 5969A-TIW1101
0216263 00792

209-100157



4.0

TP4
TP3
TP5
TP6

C2
C1

TP7

R1

C4

L1C5

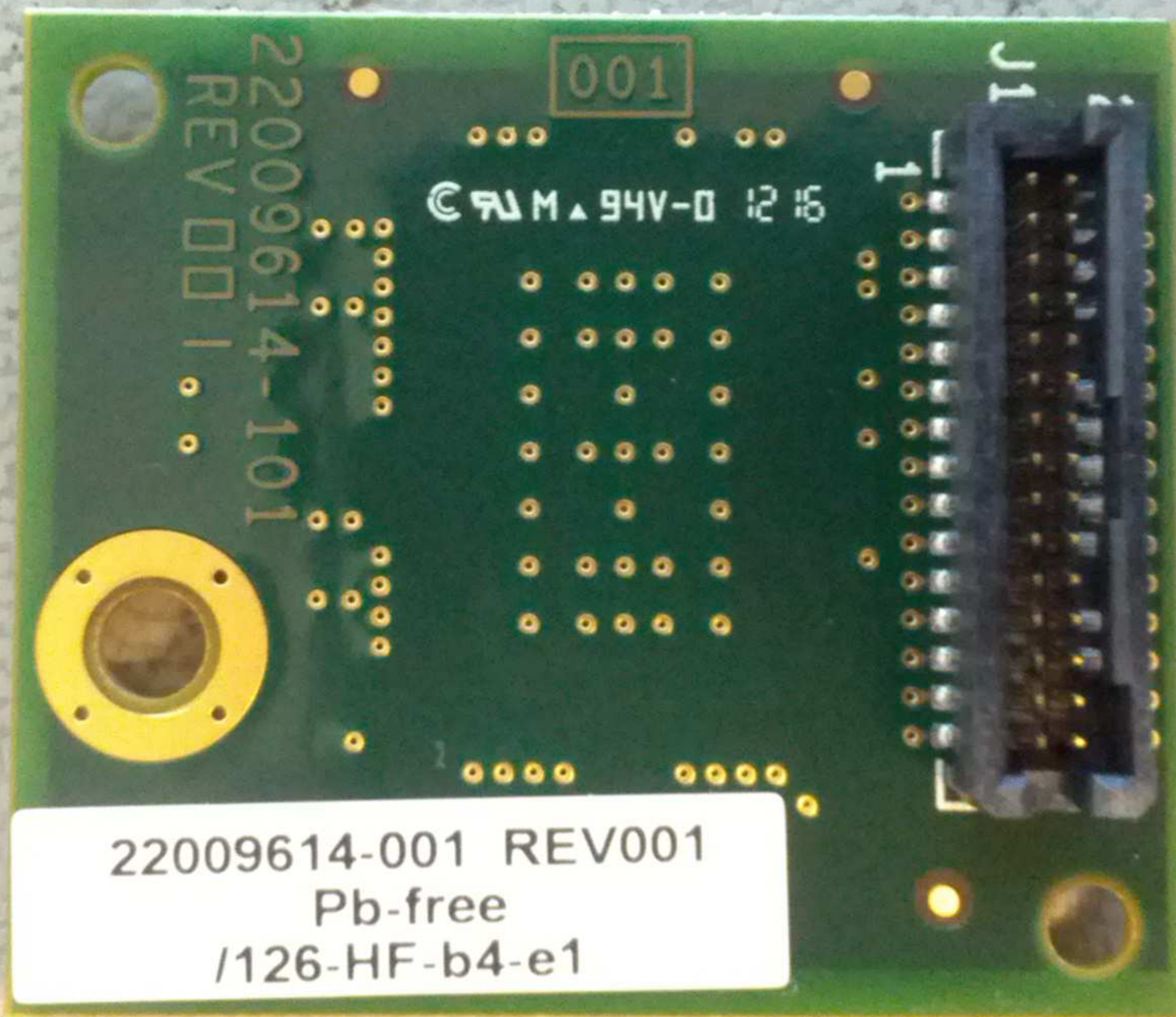
C6C3

C7

C8

L2
L3

WWCM0013560093

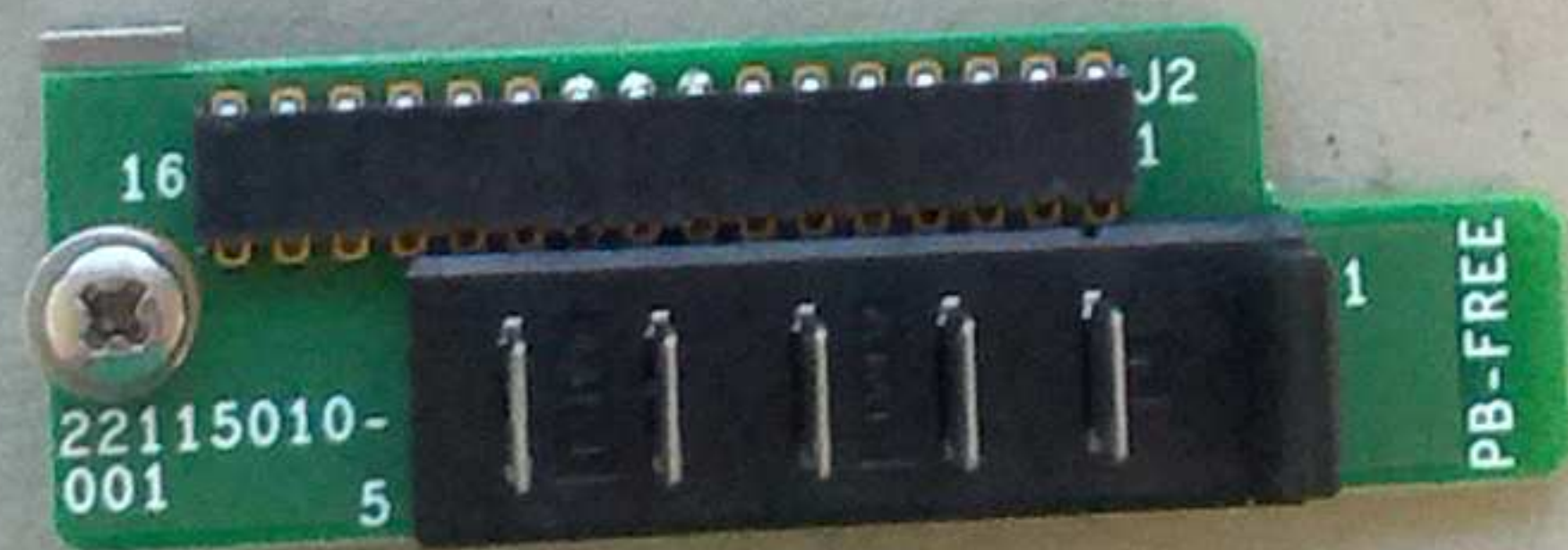
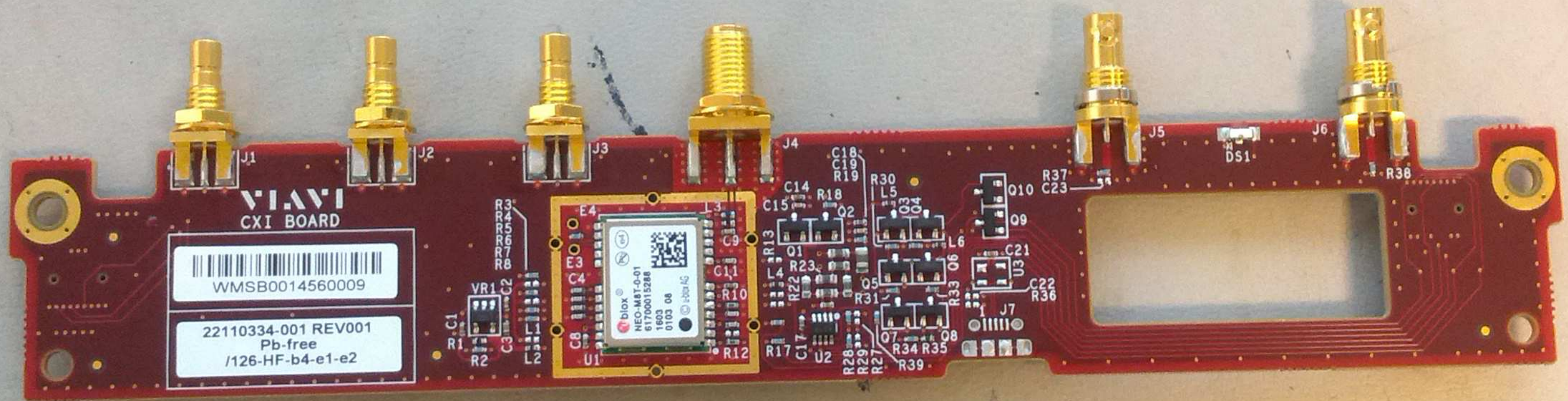


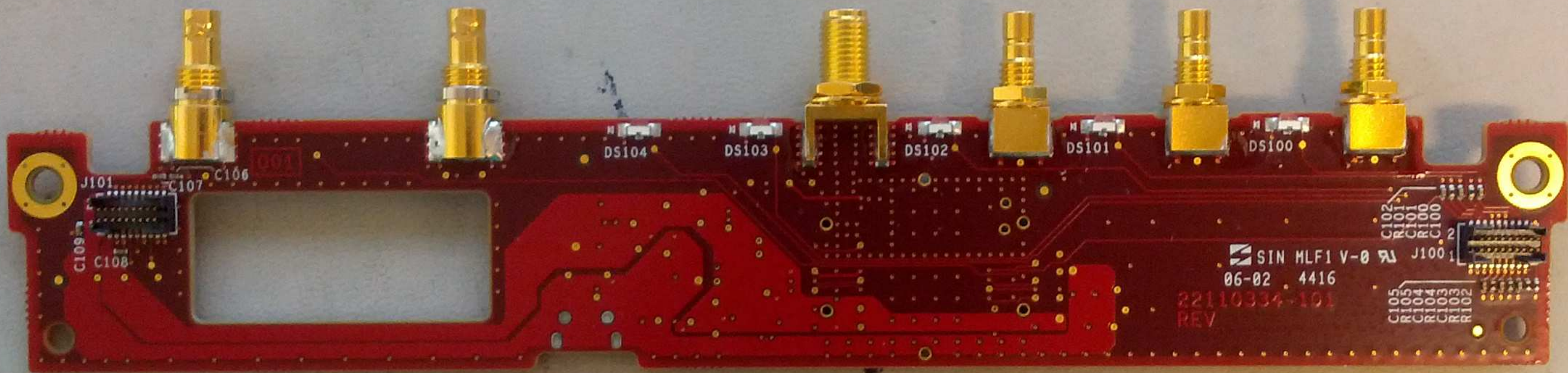
001

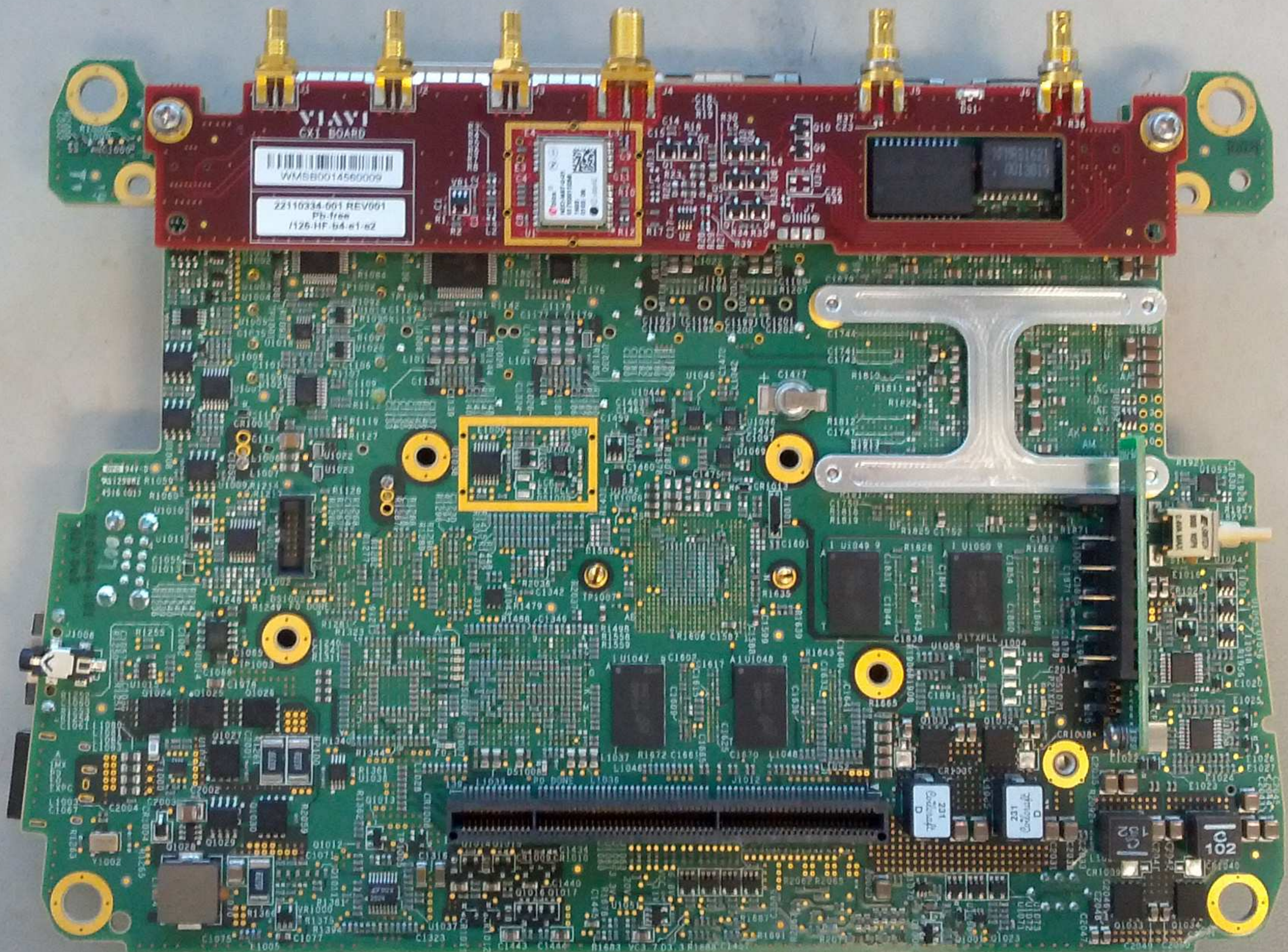
© M 94V-0 12 16

22009614-101
REV 001

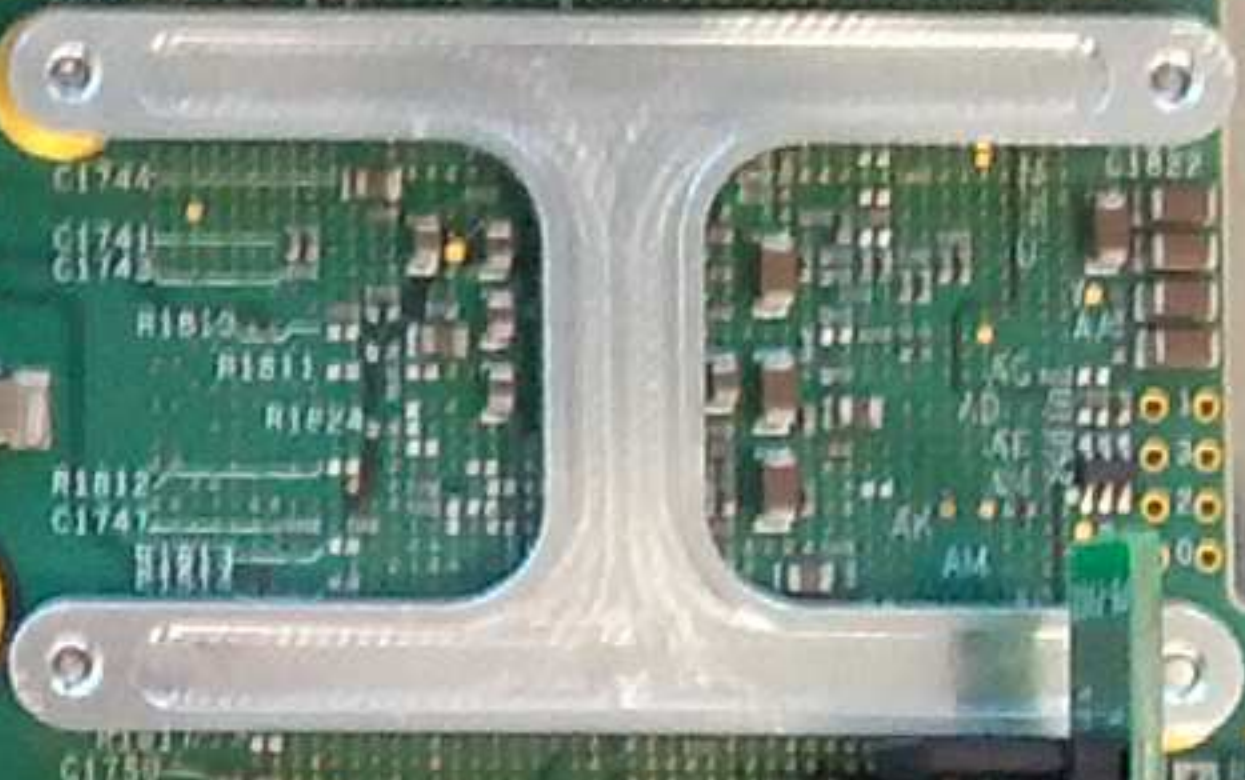
22009614-001 REV001
Pb-free
/126-HF-b4-e1





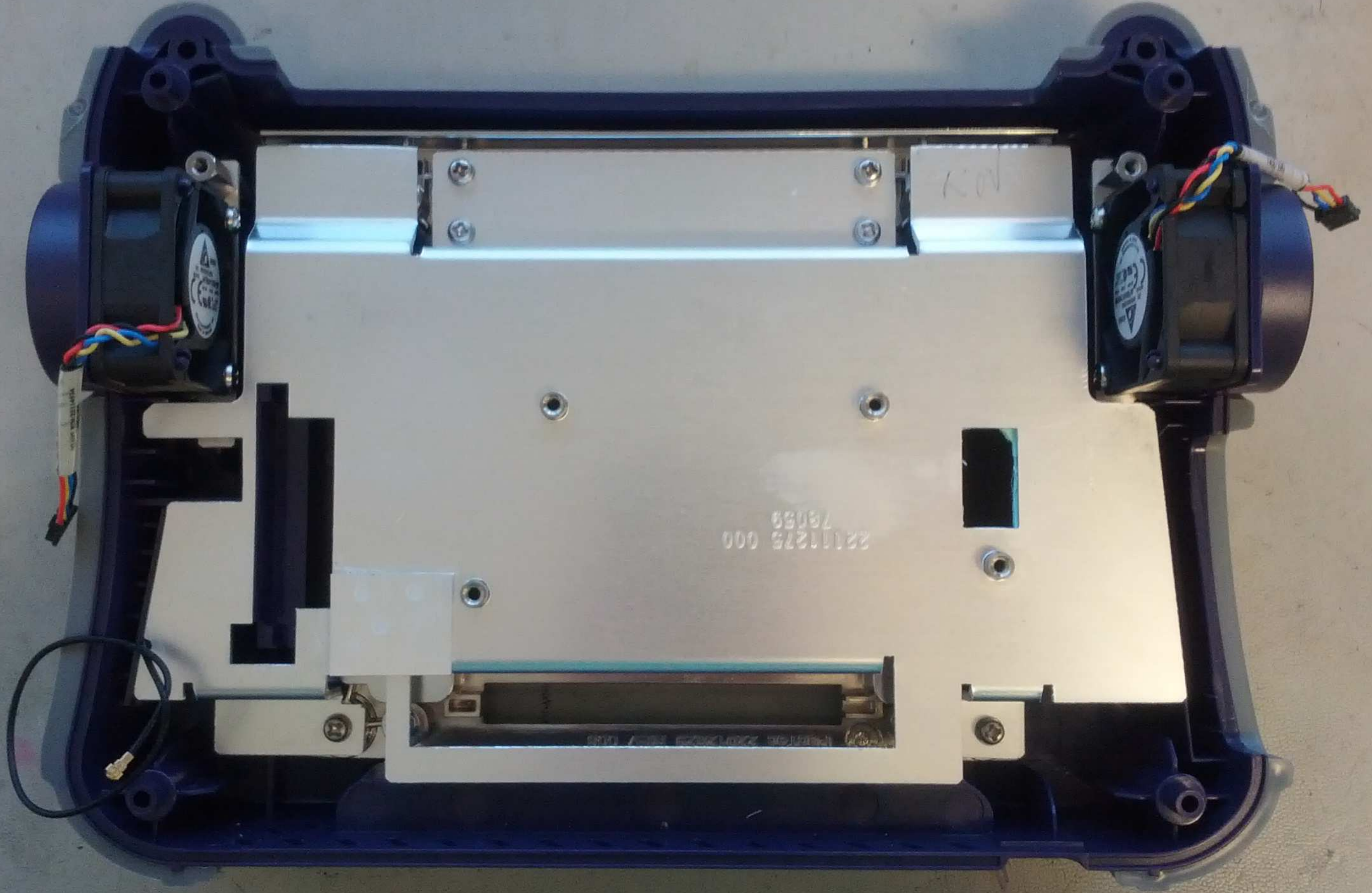


VIAXI
CXI BOARD
WMSB0014560009
22110334-001 REV001
Pb-free
1126-HF b4-e1-e2



102

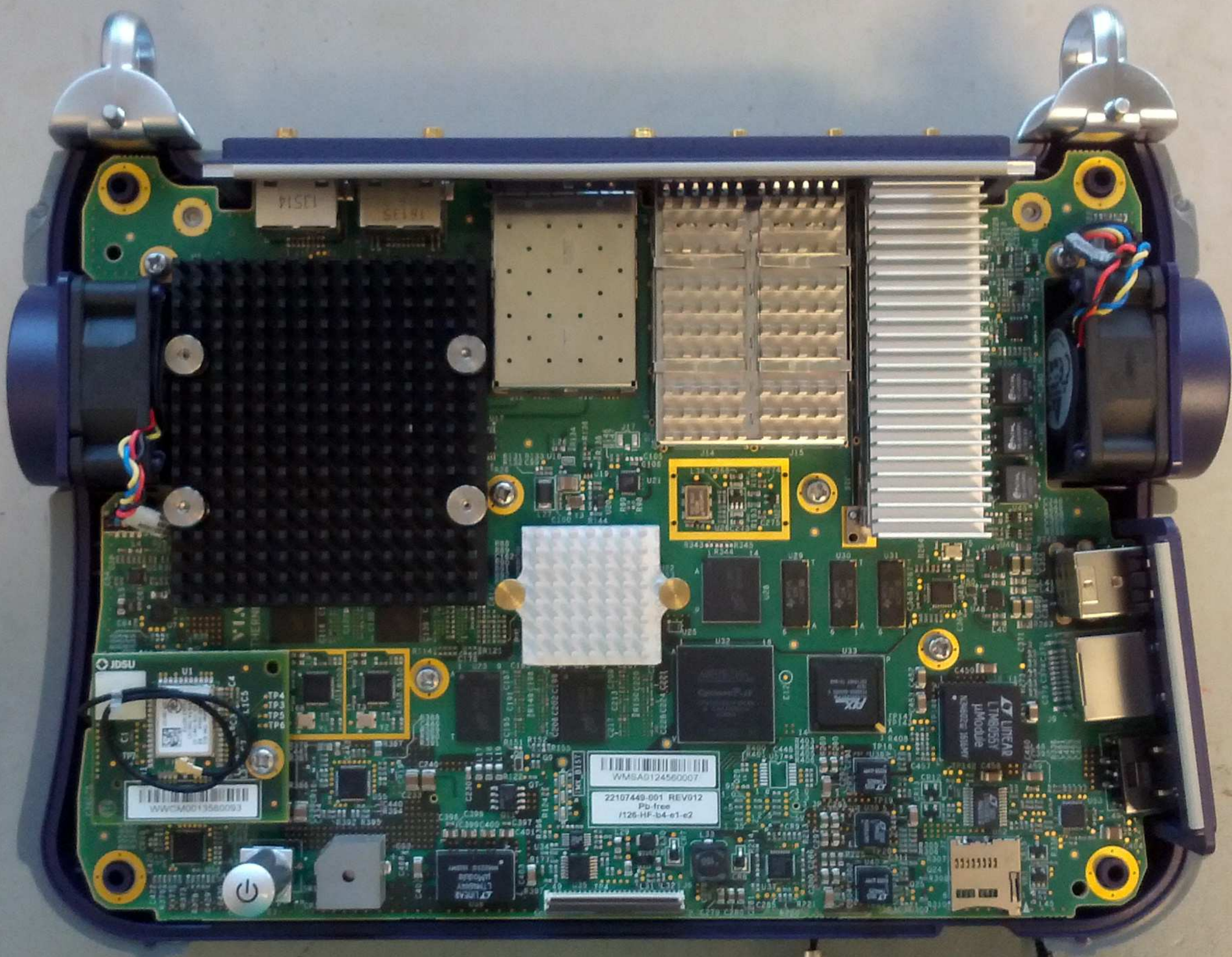




KON

22111275 000
78059

Part No. 2201202 Rev. 018



WWCMA0013580093

WMSA0124560007
22107449-001 REV012
Pb-free
1125-HF-b4-e1-e2

03335333

JDSU

WWCM0013560093

Model: TWI-BLE
ID: TFB-TW11-01
5969A-TW1101
26263 00792
209-100157



TP4
TP3
TP5
TP6

HERNE



C76C75
R52DE1

R358
R359
R360
CR16

C422
R376
R377
R373
R378
C429

R364
C419
R365
R370
U54
C428
C430
C431
C432
C433

L4
Q26
C37
U5
R30
C54
C38
L5
C64
U7
R39

U11-R1-C3
C173
U12-R1-C
Y1
Y2

C442
R387
R388
C446
R389
R390
R391
U55
C233
C440
R394
R392
R395

R114
R388
C446
R389
R390
R391

C240
C402