

3/16/2022

# **NSC-100 vs. NSC-200 Host Comparison**

# Front (NSC-100 left, NSC-200 right)



# Left Side (NSC-100 left, NSC-200 right)



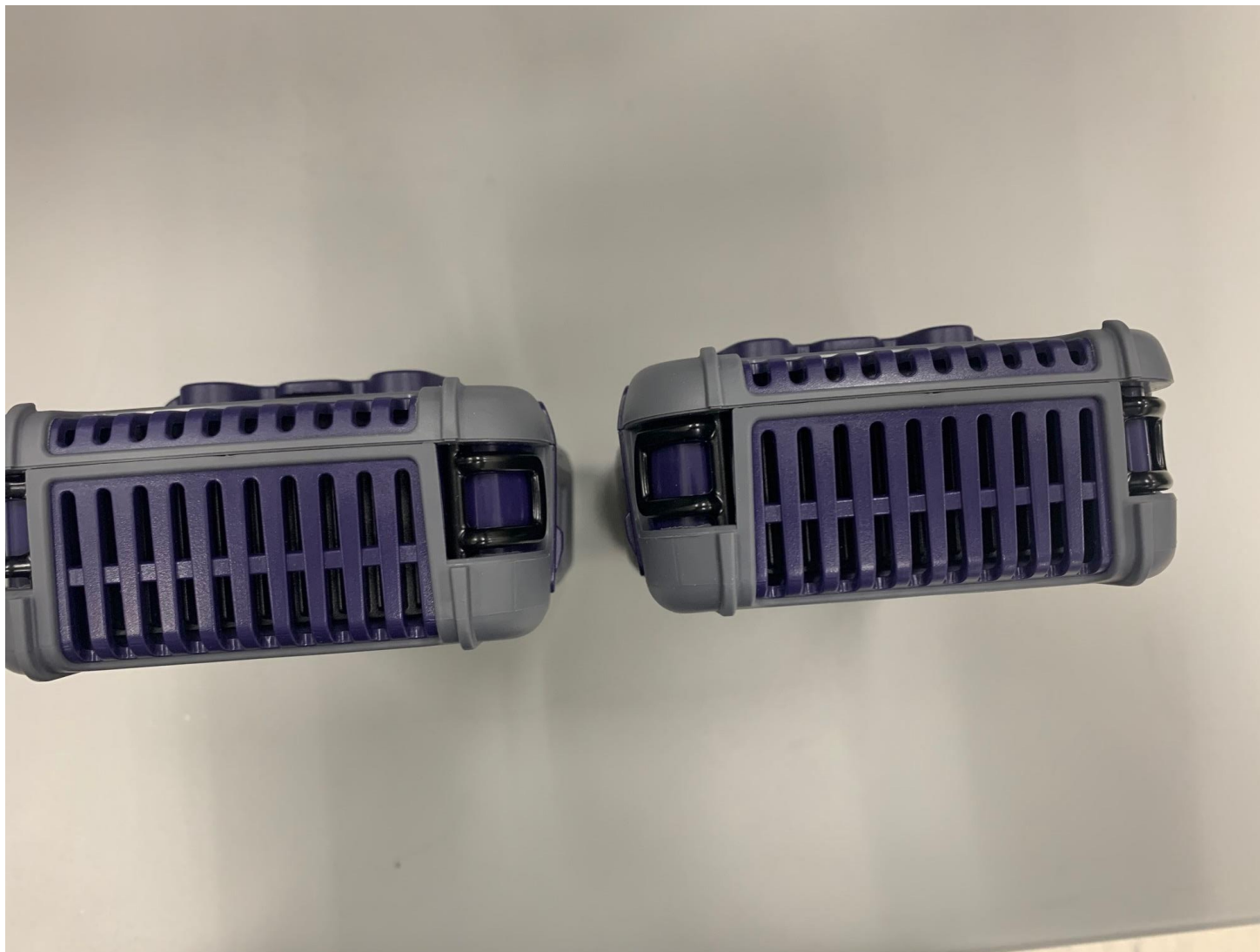
# Back (NSC-100 left, NSC-200 right)



# Right Side (NSC-100 left, NSC-200 right)



# Top (NSC-100 left, NSC-200 right)



# Bottom (NSC-100 left, NSC-200 right)



# Bottom, Flap Open (NSC-100 left, NSC-200 right)

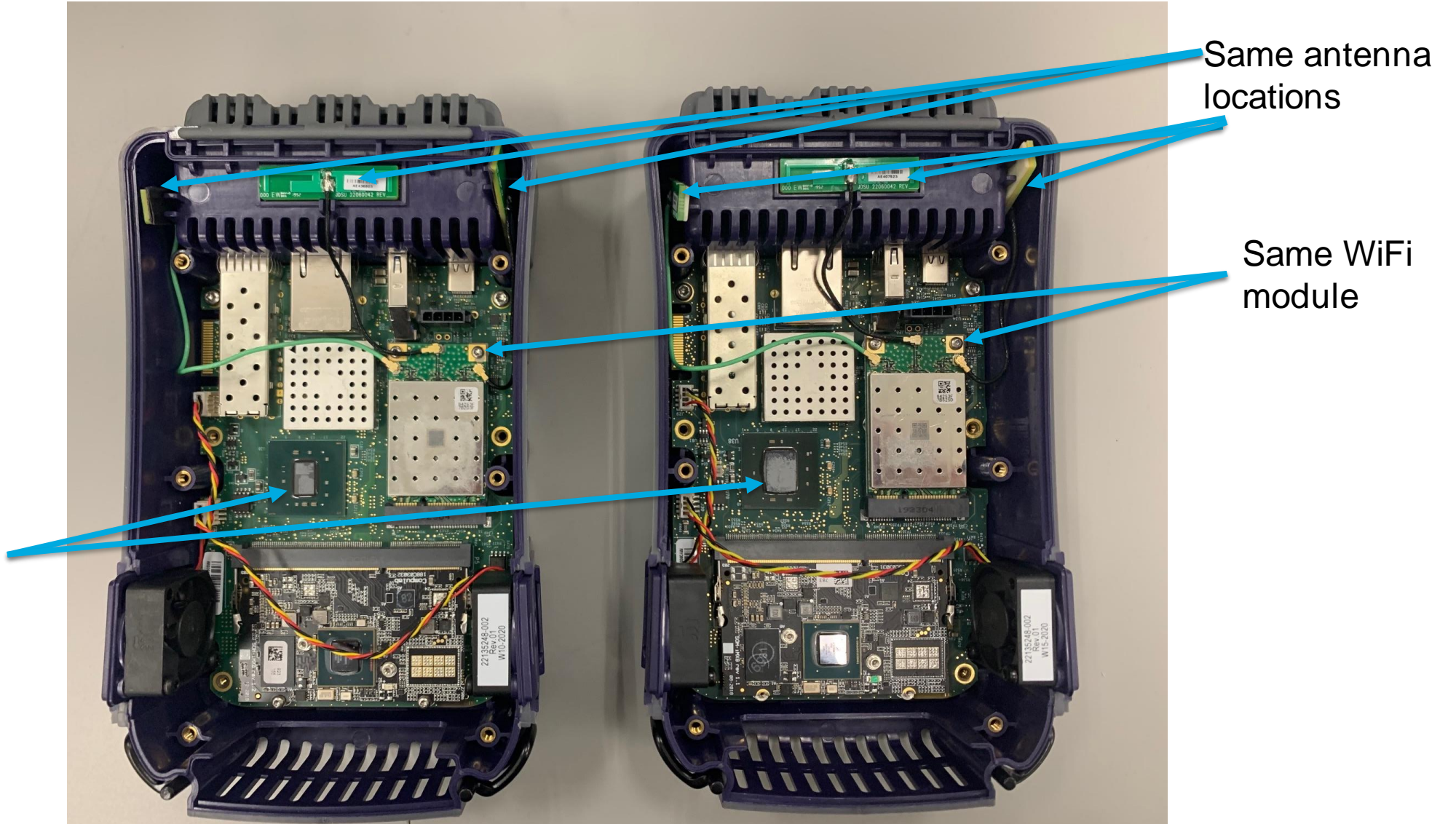




# Internal (NSC-100 left, NSC-200 right)

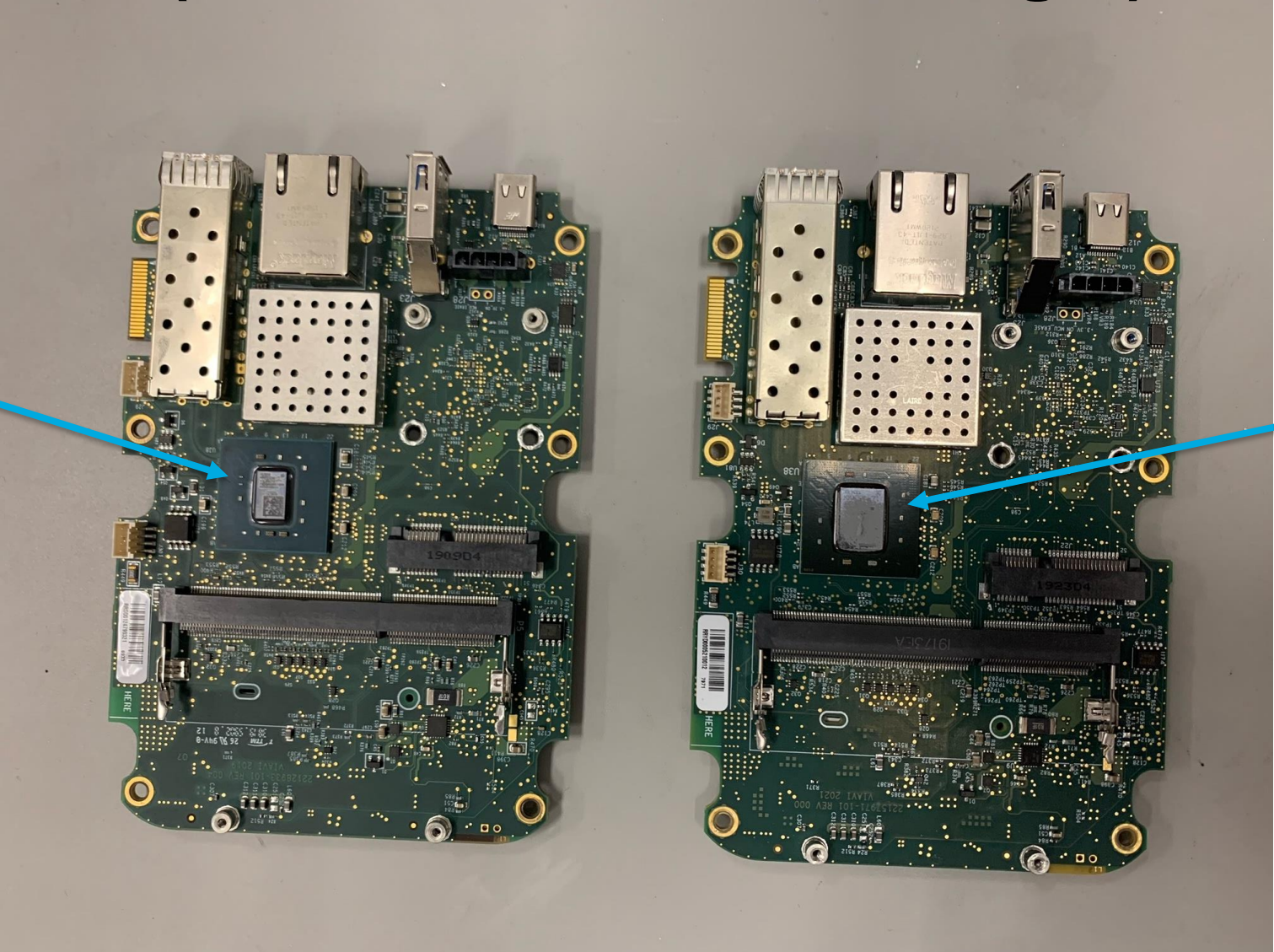
Pin compatible,  
larger gate count  
FPGA on NSC-  
200 vs NSC-100

Not associated  
with radio. Used  
for increased  
product features

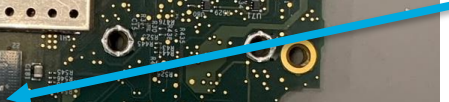


# PCBA Top Side (NSC-100 left, NSC-200 right)

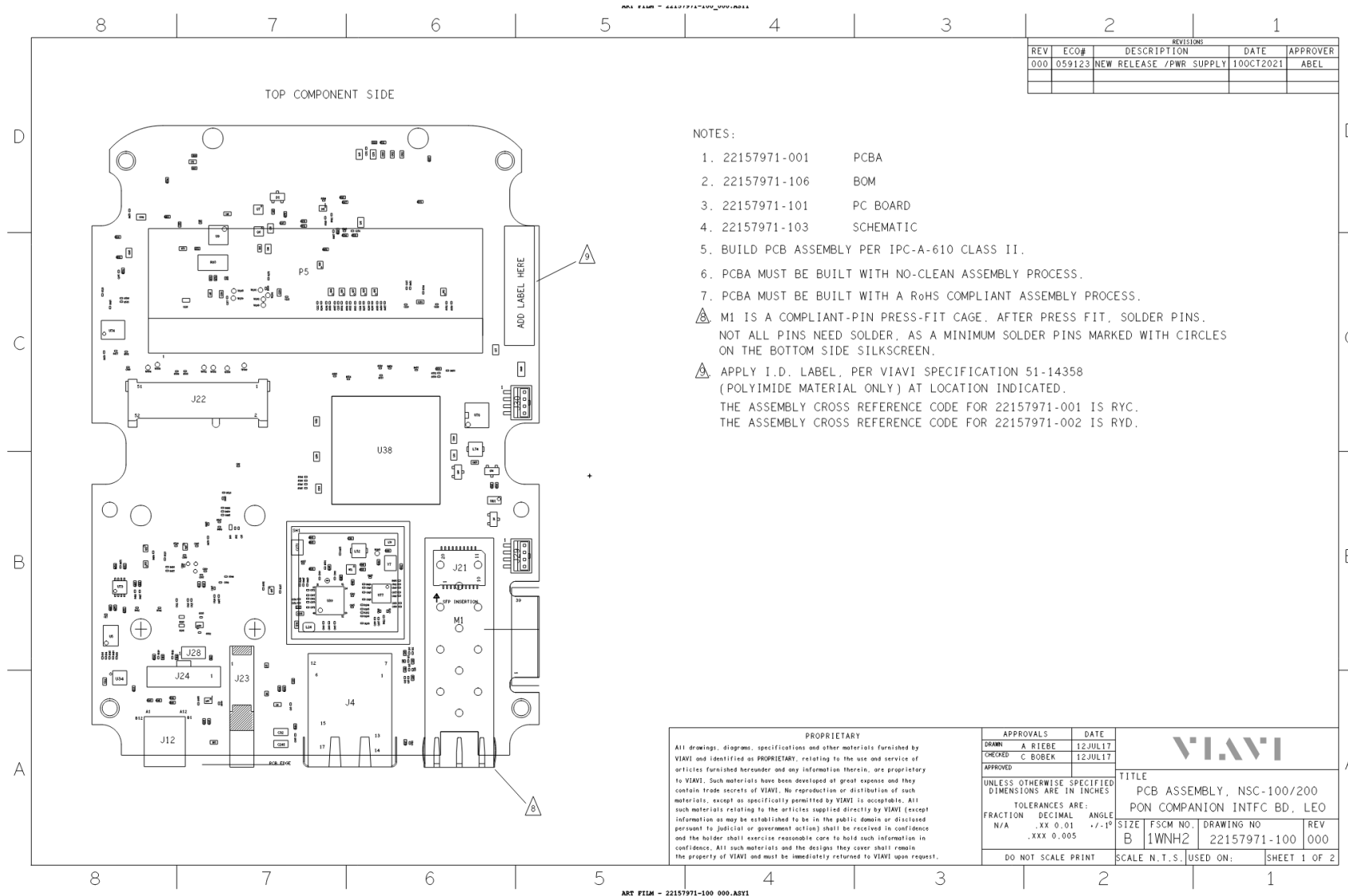
NSC-100 FPGA



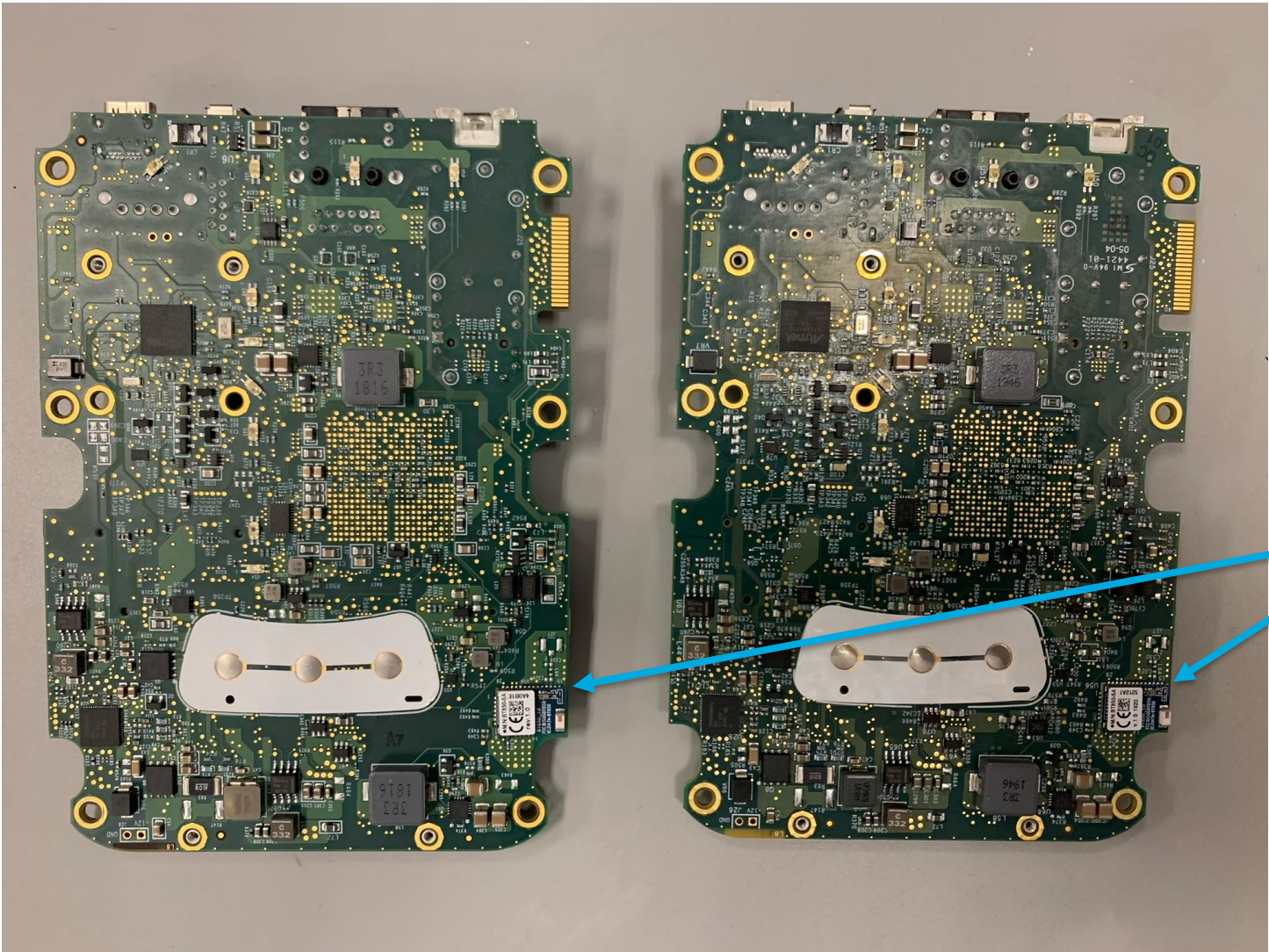
NSC-200 FPGA  
(same footprint,  
more internal  
logic gates)



# PCBA Top Side Component Layout (Same Drawing)



# PCBA Bottom Side (NSC-100 left, NSC-200 right)



Same Bluetooth module and location

# PCBA Bottom Side Component Layout (Same Drawing)

