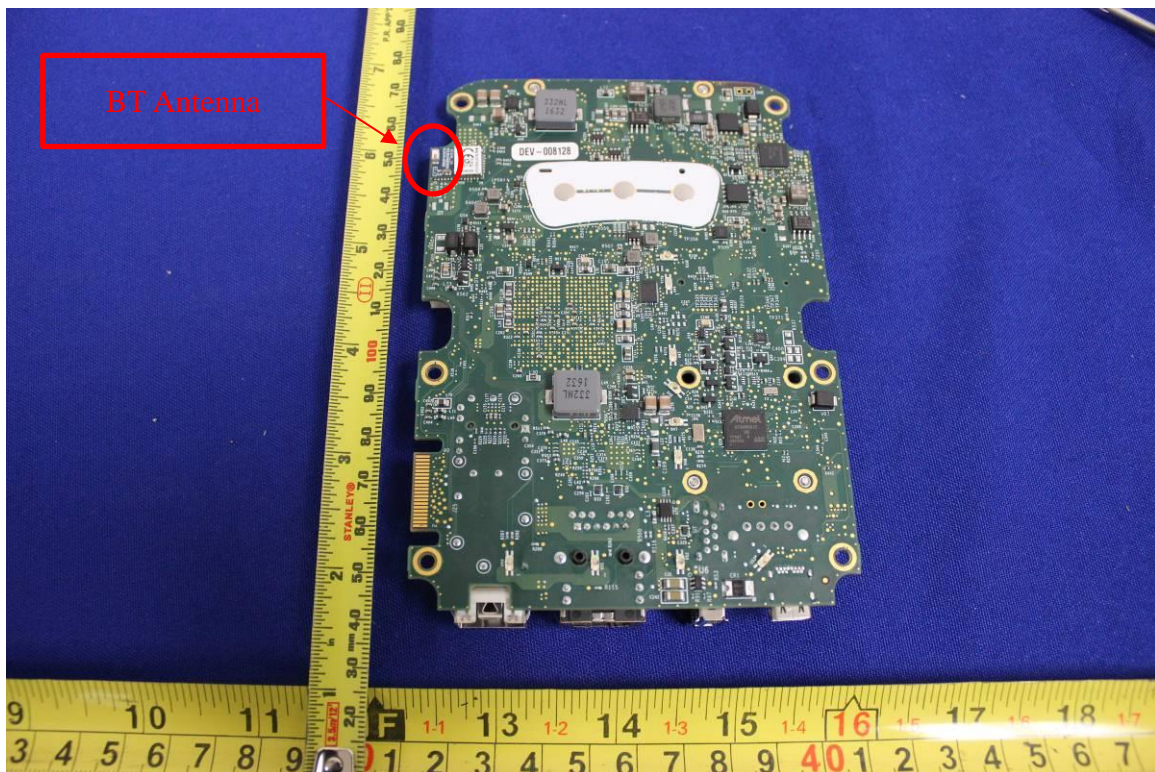
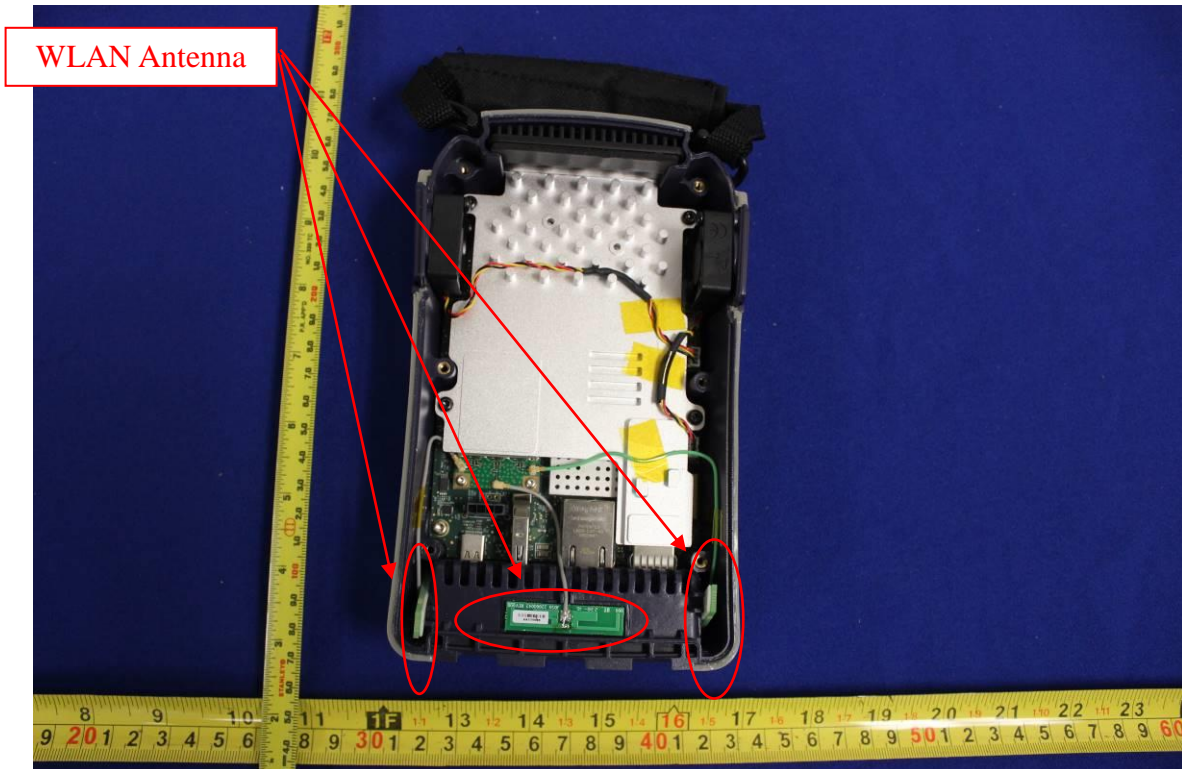


# Appendix D. Photographs of EUT

## Radio & Antenna Location



**Remark:**

SAR is not required because the distance from the antenna to the edge is > 25 mm as per KDB 941225 D06 Hotspot Mode SAR. So front top and top side is not required.

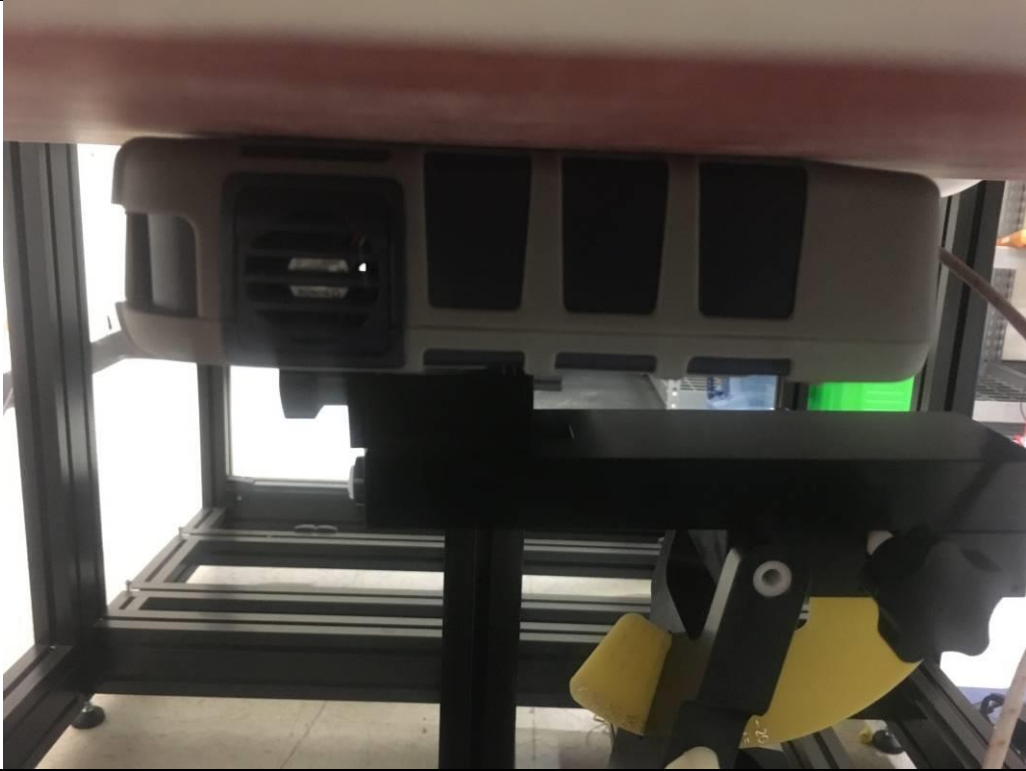
### Test Set Up



Left side Position



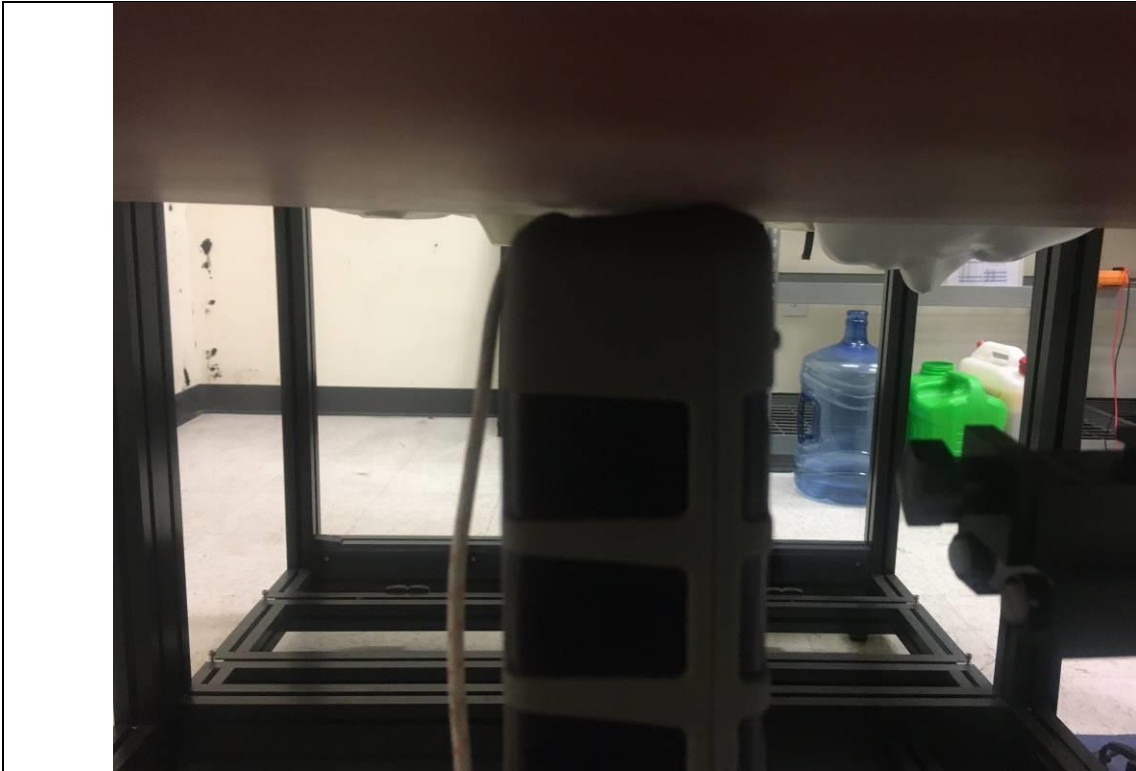
Right side Position



Front side Position



Back side Position



Bottom side Position