



The device has been evaluated to meet general RF exposure requirement.
To maintain compliance with FCC/IC's RF exposure guidelines, this equipment should be installed and operated with a minimum distance of 20cm between the radiator and your body.

CAN ICES-3 (B)/NMB-3(B)

4K Dash Cam
Ultra HD Driving Recorder
BT530024
Responsible Party:
TYPE S

**Suites 6-11, 7th Floor, Corporation Park,
11 On La, Shatin, Hong Kong**

Tel: 852 2798 8932

Android is a trademark of Google Inc.
iPhone, iPad, Mac and iPod touch are trademarks of Apple Inc.
Microsoft is a registered trademark of the Microsoft Corporation.



TOURING ITEMS
TYPE S

4K DASH CAM

Ultra HD Driving Recorder

ITM. / ART. 1458131
WP ITM. BT530024
Care & Use Instructions



**Important, retain for future reference:
Read carefully**

ML-530024_V2



TABLE OF CONTENTS

1. Introduction	1
2. Package Contents	2
3. Product Specifications	3
4. Product Dimension	3
5. Product Overview	4
6. Button Configuration	5
7. Before You Start.....	6
8. Installation	6
9. Initial Setup	8
10. Dash Cam Menu Settings.....	9
11. Camera Status & LED Indicators	14
12. Recording Time.....	14
13. Time-lapse Recording Logic	15
14. Technical Specifications	15
15. Downloading the App	16
16. App Setup	17
17. App Settings	19
18. Viewing and Managing Media Files Using A Computer	23
19. Safety Information	24
20. Maintenance & Warranty	26
21. General Information	29

21. GENERAL INFORMATION

CUSTOMER SERVICE/CONTACT

IF YOU ARE EXPERIENCING ANY ISSUES WITH THE PRODUCT DURING OPERATION, DO NOT RETURN THE PRODUCT TO THE STORE. CONTACT TYPE S DIRECTLY FOR INSTRUCTIONS ON HOW TO RETURN/ EXCHANGE THE PRODUCT.

FCC / IC Compliance Statement:

This device complies with Part 15 of the FCC rules and Industry Canada license-exempt RSS standard(s). Operation is subject to the following two conditions: (1) This device may not cause harmful interference, and (2) this device must accept any interference received, including interference that may cause undesired operation.

Warning: Changes or modifications to this unit not expressly approved by the party responsible for compliance could void the user's authority to operate the equipment. The manufacturer is not responsible for any radio or TV interference caused by unauthorized modifications or change to this equipment. Such modifications or change could void the user's authority to operate the equipment.

Note: This equipment has been tested and found to comply with the limits for Class B digital device, pursuant to part 15 of the FCC Rules. These limits are designed to provide reasonable protection against harmful interference in a residential installation. This equipment generates, uses and can radiate radio frequency energy and, if not installed and used in accordance with the instructions, may cause harmful interference to radio or television reception, which can be determined by turning the equipment off and on, the user is encouraged to try to correct the interference by one or more of the following measures:

- Reorient or relocate the receiving antenna.
- Increase the separation between the equipment and the receiver.
- Connect the equipment into an outlet on a circuit different from that to which the receiver is connected.
- Consult the dealer or an experienced radio/TV technician for help.

TYPE S and/or its affiliates do not guarantee or promise that the user of 4K Dash Cam will not be in an accident or otherwise not collide with an object and/or person. Our 4K Dash Cam is not intended in any way to be a substitute for careful and cautious driving or for the consistent adherence to all applicable traffic laws and motor vehicle safety regulations.

The 4K Dash Cam is not intended to be a substitute for rearview mirrors or for any other motor vehicle equipment mandated by law. Even when properly installed, our 4K Dash Cam has a limited field of vision and does not provide a comprehensive view of the rear area of the vehicle.

TYPE S and/or its affiliates are not responsible for a user's intended or actual use of the 4K Dash Cam. In no event shall TYPE S and/or its affiliates have any liability for any losses (whether direct or indirect, in contract, tort or otherwise) incurred in connection with the 4K Dash Cam, including but not limited to damaged property, personal injury and/or loss of life. Neither shall TYPE S and/or its affiliates have any liability for any decision, action or inaction taken by any person in reliance on the 4K Dash Cam, or for any delays, inaccuracies and /or errors in connection with the 4K Dash Cam and its functioning.

TYPE S and/or its affiliates shall have no responsibility or liability for damage and/or injury resulting from accidents occurring with vehicles having the installed, and TYPE S and/or its affiliates, the manufacturer, distributor and seller shall not be liable for any injury, loss or damage, incidental or consequential, arising out of the use or intended use of the product.

1. INTRODUCTION

Please read all of the installation instructions carefully before installing the product. Improper installation will void manufacturer's warranty. The installation instructions do not apply to all types of vehicles, and are written as guidelines to assist in installing the system.









Consult an experienced technician if you are not comfortable installing the product. You can also contact TYPE S at **866.294.9244** to speak to one of our installation specialists if you have any specific questions regarding the 4K Dash Cam.

BEFORE using the 4K Dash Cam, please read the safety information provided in this user manual. ALWAYS use the product as outlined in this user manual.

Please make sure to read and understand all local laws and regulations regarding cameras and their use in a vehicle. Laws vary by state.

2. PACKAGE CONTENTS

1. 1 x 4K Dash Cam
2. 1 x 12 / 24V DC Power Adapter w/ Mini USB Cable
3. 1 x Mini USB to USB File Transfer Cable
4. 1 x Windshield Mount
5. 1 x 16GB MicroSD Card (U1)
6. 1 x Instruction Manual
7. 1 x Quick Install Guide
8. 1 x Warranty Card

1. 	5. 
2. 	6. 
3. 	7. 
4. 	8. 

5. Repair or replacement parts supplied by TYPE S under this warranty are protected only for the unexpired portion of the original warranty.
6. This is a “repair or replace” warranty only, and does not cover the costs incurred for the installation, removal or reinstallation of the product, or damage to any mobile phone device or vehicle.

OWNER’S RESPONSIBILITIES:

TYPE S will make every effort to provide warranty service within a reasonable period of time. SHOULD YOU HAVE ANY QUESTIONS ABOUT SERVICE RECEIVED OR IF YOU WOULD LIKE ASSISTANCE IN OBTAINING SERVICE, PLEASE CALL TOLL FREE 1.866.294.9244 DURING REGULAR BUSINESS HOURS MONDAY THROUGH FRIDAY 8:00 AM TO 5:00 PM.

Note: Toll Free # is for North America Customers ONLY. See Customer service section for customer contact numbers for other regions/offices.

For customer service and technical support, please call us at 1.866.294.9244. If at that time it is determined that a replacement unit is needed, the support representative will issue a Return Authorization and instruct on how to get a new unit. TYPE S makes no other warranty of any kind aside from the limited express warranty stated herein.

DISCLAIMER OF WARRANTIES, INCLUDING WARRANTY OF MERCHANTABILITY AND WARRANTY OF FITNESS FOR PARTICULAR PURPOSE: EXCEPT AS SPECIFICALLY SET FORTH HEREIN, NO WARRANTY OR REPRESENTATION, EXPRESS OR IMPLIED, IS MADE AS TO THE 4K DASH CAM. EXCEPT AS EXPRESSLY SET FORTH HEREIN, TYPE S AND/OR ITS AFFILIATES EXPRESSLY DISCLAIMS, WITHOUT LIMITATION, ANY STATUTORY WARRANTIES AND ALL IMPLIED WARRANTIES, INCLUDING ANY IMPLIED WARRANTY OF MERCHANTABILITY OR FITNESS FOR A PARTICULAR PURPOSE.

20. MAINTENANCE & WARRANTY

CLEANING

- If dirt, rain or snow attaches to the Camera, the Monitor may not clearly display objects. If water droplets, snow or mud adhere to the Camera lens, rinse with water and wipe with a dry cloth.
- Do not use alcohol, benzene or thinner to clean the Camera. This will cause discoloration. To clean the Camera, wipe with a clean cloth dampened with mild cleaner diluted with water and then wipe with a dry cloth.

WARRANTY

• TYPE S LIMITED WARRANTY

TYPE S warrants, to the original purchaser, that its products are free from defects in material and workmanship for 1 year from the date of original purchase. Where permitted by law, TYPE S liability shall be limited to that set forth in this limited express warranty. This limited express warranty shall be the exclusive remedy of the purchaser and TYPE S makes no other warranty of any kind aside from the limited express warranty stated above.

Note: Warranty only applies for North American customers of purchases made in North America.

CONDITIONS OF WARRANTY

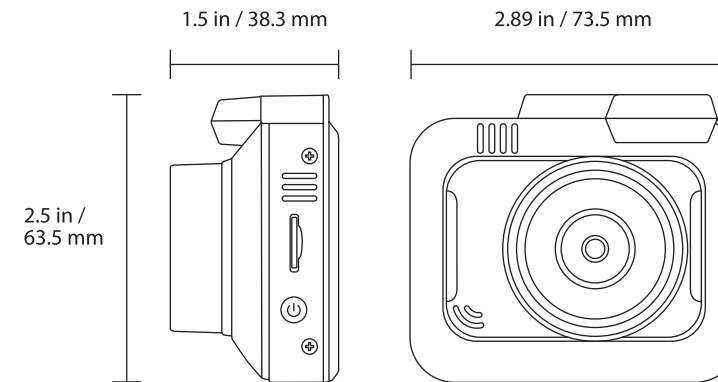
If during the 1 year warranty period your new product is found to be defective, TYPE S will repair such defect, or replace the product, without charge for parts or labor subject to the following conditions:

1. All repairs must be performed by TYPE S.
2. All warranty claims must be accompanied by a copy of the sales receipt or bill of sale.
3. The equipment must not have been altered or damaged through negligence, accident, improper operation, or failure to follow the product instructions for installation, use, or care.
4. The replacement of parts is excluded from the warranty when replacement is necessary due to normal wear and tear.

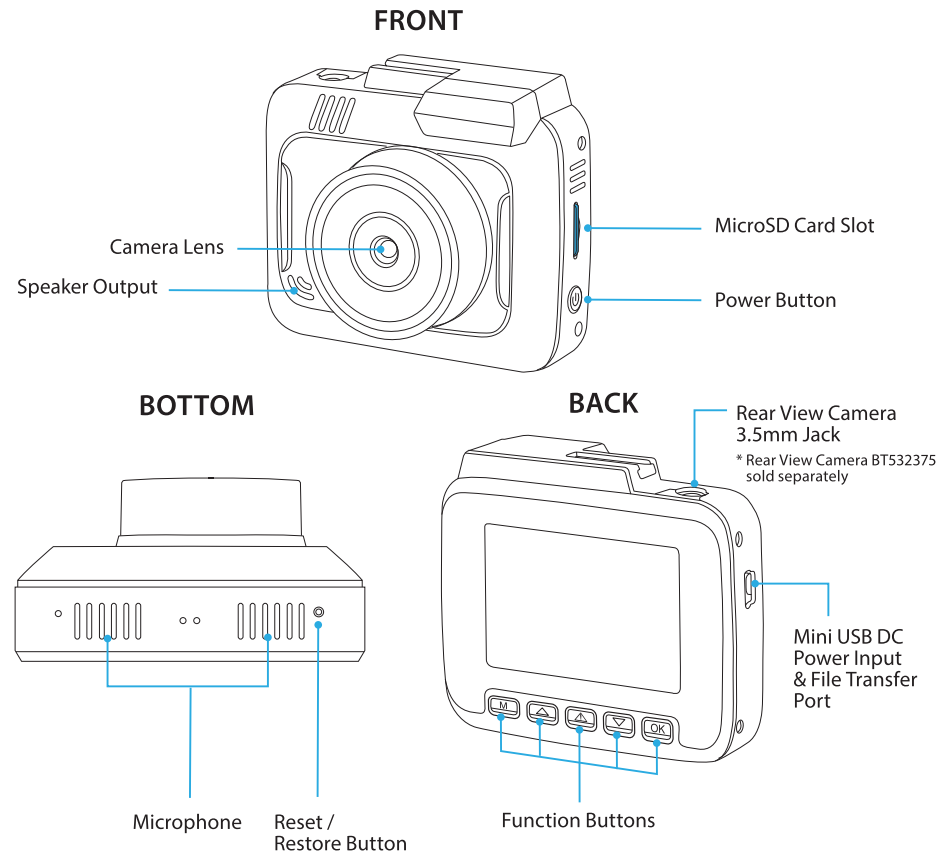
3. PRODUCT SPECIFICATIONS

Screen:	2.35" IPS
Resolution:	4K UHD - Ultra High Definition (3840 x 2160p)
Frequency:	2.4 GHz
Operating Voltage:	DC 12V / 24V - Cigarette Lighter Adapter (CLA)
Operating Temperature:	14°F~140°F (-10°C~60°C)
Viewing Angle:	139° (optical diagonal field of view)
Image Sensor:	5MP
Maximum Signal Range:	9.84 Feet/3 Meters (without interference or obstruction)

4. PRODUCT DIMENSION



5. PRODUCT OVERVIEW



- to vehicle orientation or road conditions.
- Be sure to check the Camera's position and mounting angle before each use.
- Do not strike the 4K Dash Cam. It is a precision instrument. Otherwise, it may malfunction or cause damage resulting in a fire or an electric shock.
- This product will only provide images of items that are within the field of view of the 4K Dash Cam. Thus, it is imperative that the 4K Dash Cam should be kept clean and unobstructed.
- Adhere to all applicable traffic laws and motor vehicle regulations applicable to the device.
- Consult local laws and regulations for any restrictions on installation or use.
- Never allow children to play with the device. Small parts may be a choking hazard.
- If the temperature changes rapidly, the system may not operate normally.
- When strong light directly enters a camera, objects may not be displayed clearly.
- The screen may flicker under fluorescent light.
- The colors of objects on the monitor may differ somewhat from those of the actual object.
- Do not use alcohol, benzene or thinner to clean the Camera. This will cause discoloration. To clean the Camera, wipe with a clean cloth dampened with mild cleaner diluted with water and then wipe with a dry cloth.
- Will work up to 3 Meters/ 9.84 Feet.

SAFETY AROUND AND BEHIND OTHER VEHICLES

Many preventable injuries and deaths occur in driveways or parking lots when drivers do not see children, pets, or others near their vehicles. Here are a few safety tips that will help you to avoid a back-over accident:

- Walk completely around your vehicle before getting in. Check for kids, toys, and pets before entering the vehicle and starting the engine.
- Know where children are. Have children stand in a place where they are in full view.
- Be aware of young children. Young children are small and hard to see.
- Parents, caregivers and all adults need to be vigilant in supervising children, especially when children are in the yard, driveway or parking lot playing near parked cars.
- Roll down your window so you will be able to hear what is happening outside your vehicle.
- Owners of SUVs, trucks, and vans need to take extra care to avoid hitting or running over a child.
- Teach children to move away from a vehicle whenever it is started.

19. SAFETY INFORMATION

IMPORTANT SAFETY INSTRUCTIONS

1. **SAVE THESE INSTRUCTIONS**– This manual contains important safety and operating instructions of 12V Car charger for Model BT530024.
2. Before using the product, read all instructions and cautionary markings.
3. Do not expose car charger to rain, moisture, or snow.
4. Use of an attachment not recommended or sold by the product manufacturer may result in a risk of fire, electric shock, or injury to persons.
5. To reduce risk of damage to cigarette lighter connector and cord, pull by cigarette lighter connector rather than cord when disconnecting car charger.
6. Make sure cord is located so that it will not be stepped on, tripped over, or otherwise subjected to damage or stress.
7. Do not operate car charger with damaged cord or cigarette lighter connector – replace it immediately.
8. Do not operate car charger if it has received a sharp blow, been dropped, or otherwise damaged in any way; take it to a qualified serviceperson.
9. Do not disassemble car charger; take it to a qualified serviceperson when service or repair is required. Incorrect reassembly may result in a risk of electric shock or fire.
10. To reduce risk of electric shock, unplug charger before attempting any maintenance or cleaning. Turning off controls will not reduce this risk.

WARNING: A failure to read and follow these warnings and instructions may result in a serious accident, including damaged property or a serious injury, including loss of life.

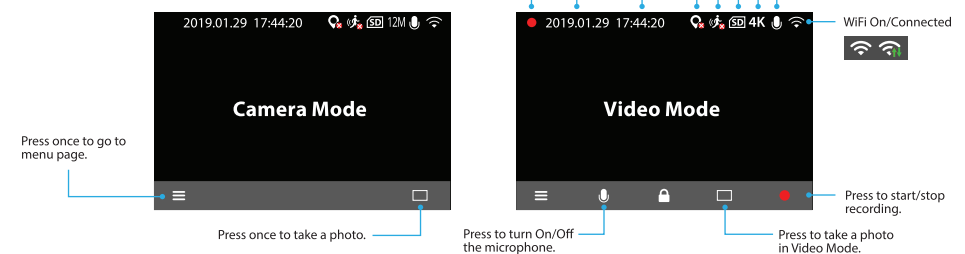
- The 4K Dash Cam is designed as an aid to the driver in recording incident in driving. However, you, the driver, must use it safely and properly. Use of the 4K Dash Cam is not a substitute for safe, proper and legal driving.
- Never depend on the 4K Dash Cam entirely when driving. The image on the screen is different from actual conditions. Objects viewed in the Dash Monitor differ from actual distance because a wide-angle lens is used.
- Always check behind and all around the vehicle visually with mirrors before proceeding.
- The area displayed by the 4K Dash Cam is limited. The 4K Dash Cam does not display objects that are out of the camera's field of view. The area displayed on the screen may vary according

6. BUTTON CONFIGURATION

1. **Power Button**
Press and hold to turn On/Off the Dash Cam. Press once to activate screen save.
2. **Menu Button**
Press to open the menu or go back to the previous screen.
3. **Up Button**
Press to navigate up within menus.
4. **File Protection / Lock Button**
Press and hold while recording to save a 30 second clip and permanently store in the event folder.
5. **Down Button**
Press to navigate down within menus.
6. **OK / Record Button**
Press to confirm selection when in menus. Press to start / stop recording in Video Mode.

Apply configuration and settings to the Dash Cam using the 5 function buttons. Refer to the screen display below for the buttons and their corresponding functions.

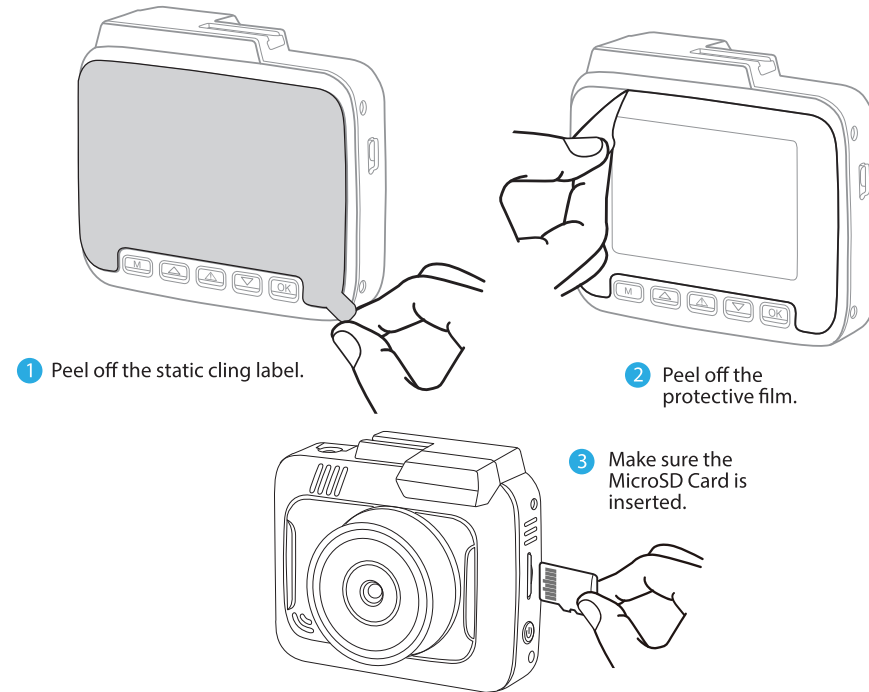
Note: Press any of the 5 function buttons once to bring out the menu bar at the bottom.



7. BEFORE YOU START

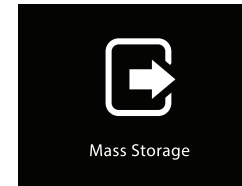
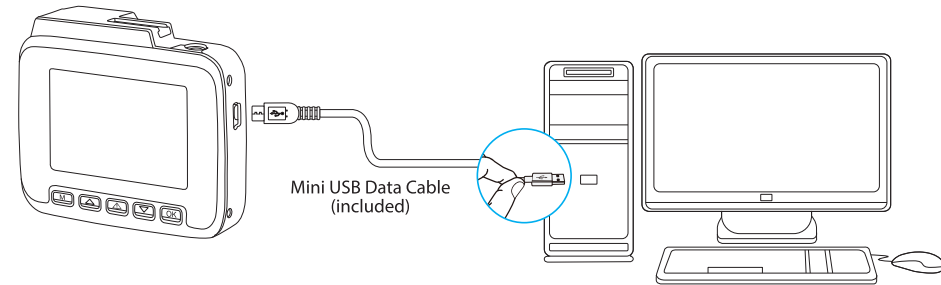
Please power ON, configure Initial Settings (Section 9), connect with the TYPE S Drive App (Section 16) and test before installing on your vehicle. Please use this document for detailed instructions and product information. As always, please feel free to contact our Customer Care team for further assistance toll-free (866) 294-9244.

8. INSTALLATION



6

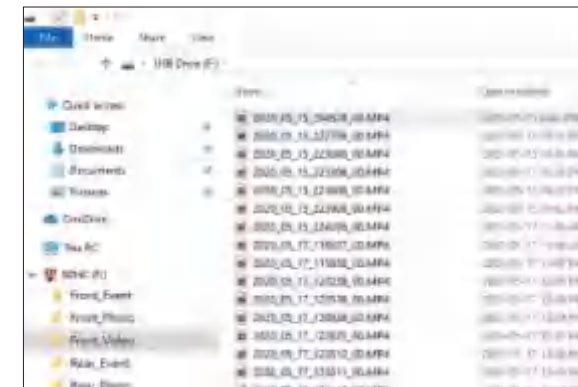
18. VIEWING AND MANAGING MEDIA FILES USING A COMPUTER



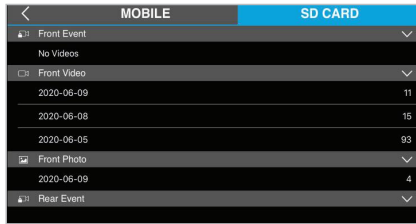
Note: The 4K Dash Cam will stop recording when it is connected to a computer.

Once the 4K Dash Cam is connected to a computer with the Mini USB data cable (included), the screen on the left will show up on the Dash Cam.

The 4K Dash Cam will function as a card reader for the computer, and it will appear as a new USB drive. User can manage files in the MicroUSB card directly from the computer.



23



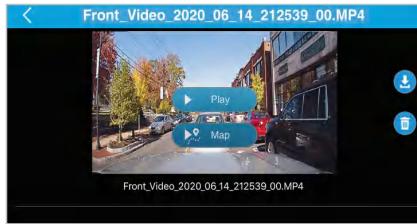
Gallery

Press the icon on the main interface to enter the media gallery. Press the **SD CARD** tap to access the media files stored in the MicroSD card. Scroll down the list to select the file arranging from newest to oldest.



MOBILE tap

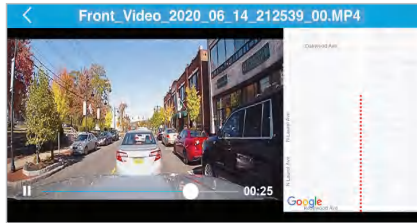
Press the **MOBILE** tap to access the downloaded files in your smartphone. You can manage files even if your phone is not auto sync with the Dash Cam. Press the icon to share the selected file, or press the icon to delete the file.



SD CARD tap

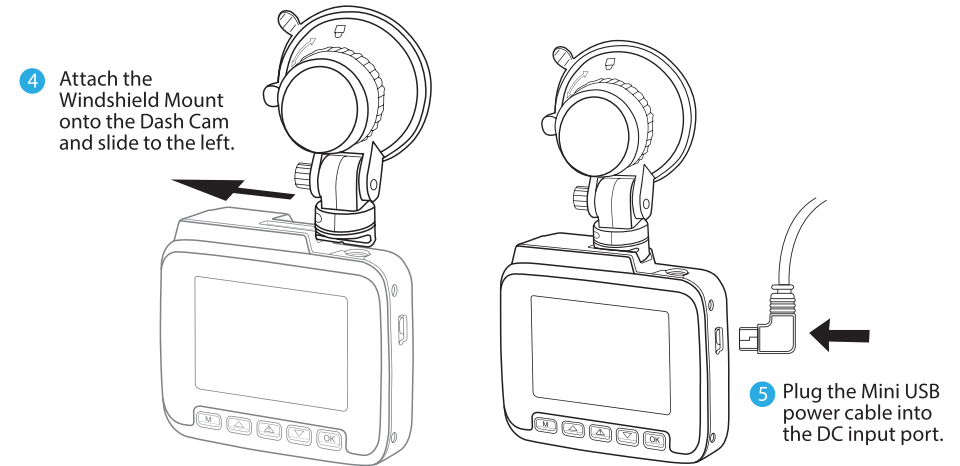
Press the icon to download the selected file into your smartphone, or press the icon to delete the file from the MicroSD card.

NOTE: 4K video capacity is large and takes longer to transfer from the Dash Cam's SD card to the App. Please refer to page 23 for faster transferring of files using the mass storage function.



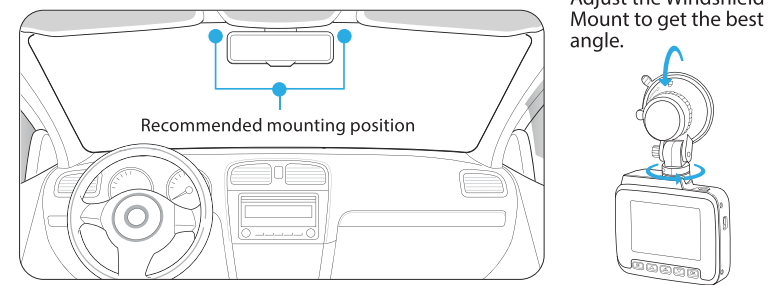
GPS Information

You can press to play the footage or press to show GPS location while the footage is playing back.

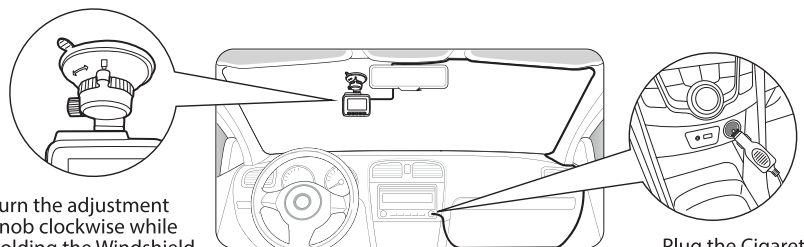


6 Check the live screen in TYPE S Drive APP and determine the most suitable mounting position. (See page 17 on using the APP.)

Warning: Do not install the product in a location where it can obstruct the driver's field of vision.



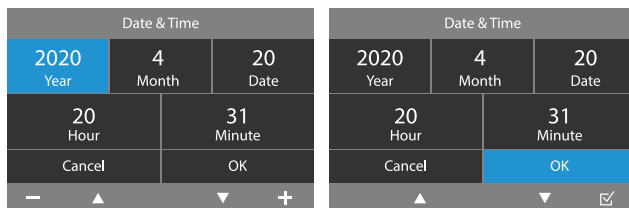
7 Route and hide the power cable in the headliner and pillars in your vehicle.



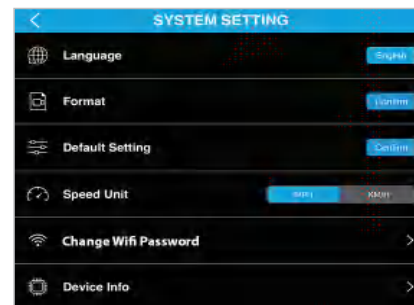
Turn the adjustment knob clockwise while holding the Windshield Mount onto the glass to secure it on the windshield.

Plug the Cigarette Charger Cable into the 12/24V DC outlet.

9. INITIAL SETUP

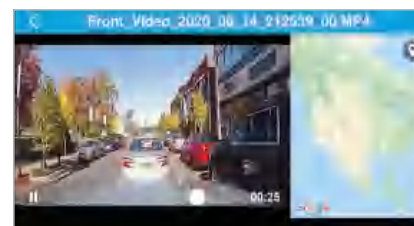


Set the date & time before installing and using the dash cam. This date & time is the time stamp for all recorded media files.



System Setting (continued)

- Language - Default language is English.
- Format - Erase everything on the MicroSD card.
- Default Setting - Reset the Dash Cam to default settings.
- Speed Unit - Select your desired speed unit.
- Change WiFi Password - Change the Dash Cam's WiFi password.
- Device Info - Shows the Dash Cam's current firmware version.



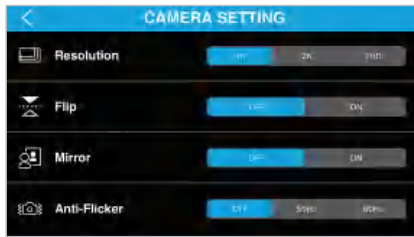
GPS Signal Status 1

This status indicates GPS receiver is waiting for GPS signal when the footage is recorded. GPS trip data will resume once it picks up the signal. If this status appeared repeatedly please call our technical support to assist in troubleshooting.



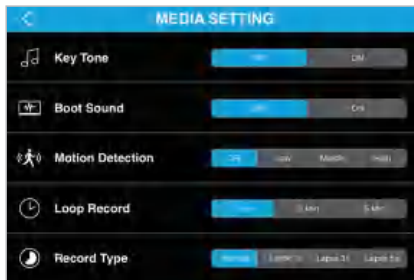
GPS Signal Status 2

This status indicates map tracking is not working. Mobile data must be turned on for map tracking to process.



Camera Setting (Camera Mode)

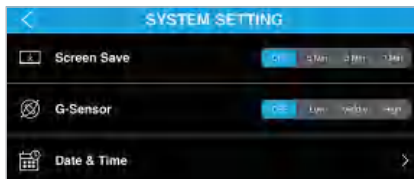
- Resolution - Select the resolution of captured images.
- Flip - Invert the camera image upside down.
- Mirror - Enable this feature when you rotate the Dash Cam to rear facing.
- Anti-Flicker - Adjust this setting to prevent the flickering of lights by selecting the frequency according to your local regulations.



Media Setting

- Key Tone - Turn the Key Tone On/Off.
- Boot Sound - The camera will play a sound when it is turned on and off. Choose this option to turn On/Off the sound.
- Motion Detection - Select the level of sensitivity of the motion detection function.
- Loop Record - Select the duration of each recorded footage.
- Record Type - Select between normal video or time-lapse video.

(Note: Refer to page 15 about time-lapse recording.)



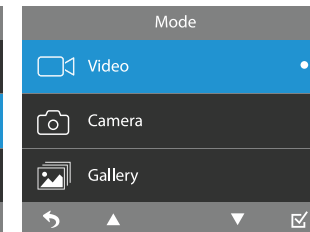
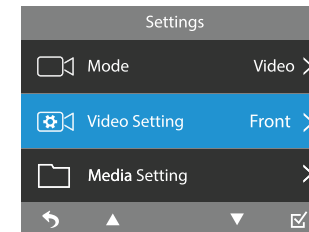
System Setting

- Screen Save - Screen will dim to a digital clock interface after the specified time you select.
- G-Sensor - Select the level of sensitivity of G-Sensor.
- Date & Time - Set up the date and time of the Dash Cam.

10. DASH CAM MENU SETTINGS

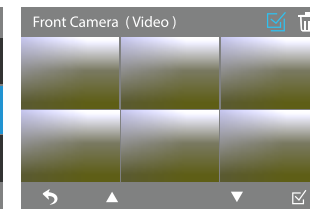
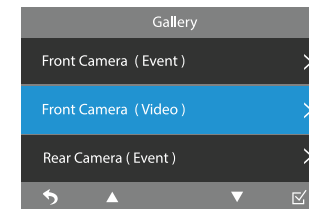
Apply configuration and settings to the Dash Cam using the 5 function buttons.

Note: Press any of the 5 function buttons once to bring out the menu bar at the bottom.



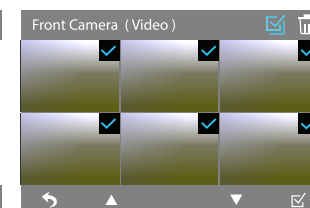
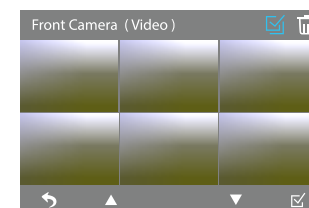
Modes

- Select between Video Mode, Camera Mode or Gallery Mode.



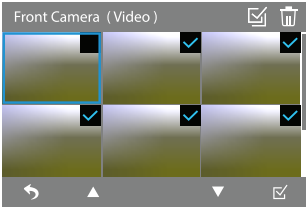
Gallery



- Select to browse galleries between:
- Front Camera (Event)
 - Front Camera (Video)
 - Rear Camera (Event)
 - Rear Camera (Video)
 - Front Camera (Photo)
 - Rear Camera (Photo)

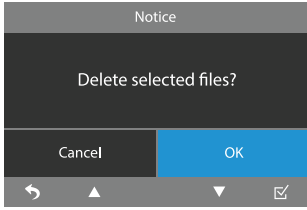



View / Manage Recorded Files

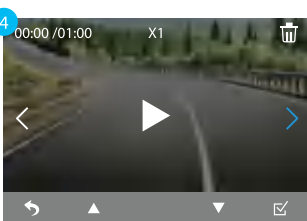
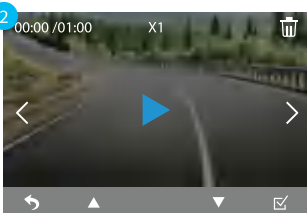
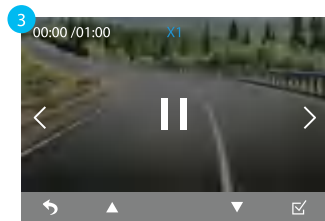
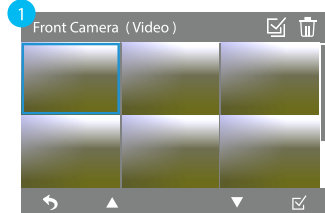
The **Select All** icon is highlighted in blue as default. Press the **Confirm** button to select all files.




Press the ▲ or ▼ button until the  icon is highlighted in blue and then press the  / OK button to erase the selected files.



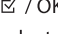

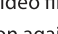
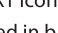
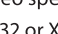

Press the ▼ and  / OK button to confirm the erase.



Erase Files

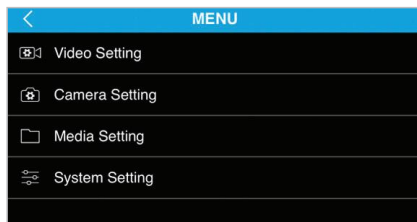
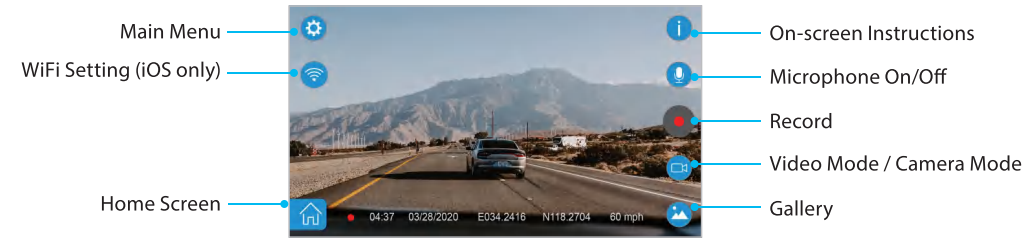
• Use the ▲ ▼  buttons to deselect the files you don't want to erase.

Play Video Files

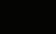
1. Press the ▲ or ▼ button to cycle through the gallery. Press the  / OK button to open the selected video file.
2. Press the ▲ or ▼ button again until the  icon is highlighted in blue and then press the  / OK button to play the video file. Press the  / OK button again to pause.
3. Press the ▲ or ▼ button until the X1 icon is highlighted in blue and then press the  / OK button to adjust video speed to X2, X4, X8, X16, X32 or X64.
4. Press the ▲ or ▼ button until the < or > icon is highlighted in blue and then press the  / OK button to go to previous or next video.

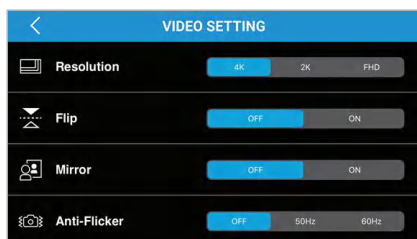
17. APP SETTINGS

Main Interface



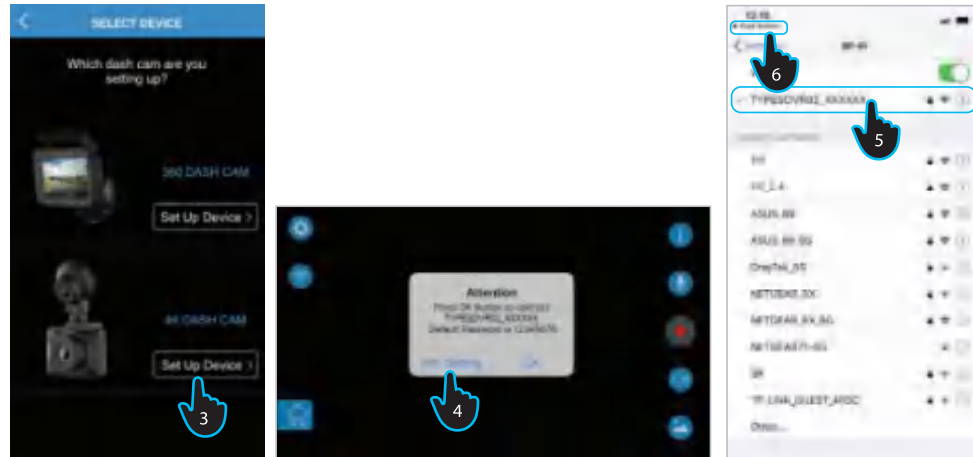
Main Menu

The default settings of the 4K Dash Cam will allow you to use it without the need to change any settings. However, you can still customize the Dash Cam any way you prefer. Press the  icon to enter the Main Menu.



Video Setting (Video Mode)

- Resolution - Select the resolution of each recorded footage.
- Flip - Invert the camera image upside down.
- Mirror - Enable this feature when you rotate the Dash Cam to rear facing.
- Anti-Flicker - Adjust this setting to prevent the flickering of lights by selecting the frequency according to your local regulations.

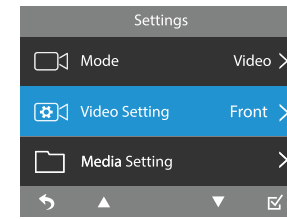


iOS device

3. Open the TYPE S Drive APP and select the Dash Cam category. Select 4K Dash Cam from the list of Dash Cams. Press **Set Up Device**.
4. Press **WiFi Setting** on the main interface when it prompts you to go to the WiFi setting page.
5. On the WiFi setting page choose SSID "TYPESDVR02_XXXXXX" and enter password "12345678".
6. Press TYPE S Drive icon to return to the APP.
7. You should see the live view of the Dash Cam on the main interface.



Video Setting

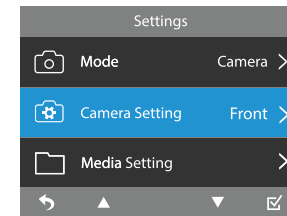


Video Settings		Resolution	
1	Resolution	4K >	4K (3840*2160P)
2	Flip	OFF	2K (2560*1440P)
3	Mirror	OFF	FHD (1920*1080P)

1. Select camera resolution between 4K (3840 X 2160P), 2K (2560 x 1440P) and FHD (1920 x 1080P).
2. Select to invert the camera image upside down.
3. Select to invert the camera image left to right.
4. Adjust anti-flickering setting between Off, 50Hz and 60Hz.

Video Settings		Anti-Flicker	
2	Flip	OFF	OFF
3	Mirror	OFF	50Hz
4	Anti-Flicker	OFF >	60Hz

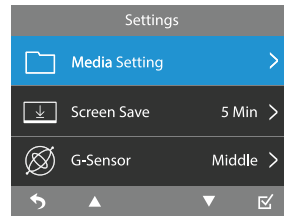
Camera Setting



Camera Settings		Resolution	
1	Resolution	12M >	12M (4608*2592)
	Flip	OFF	8M (3840*2160)
	Mirror	OFF	5M (3072*1728)

Select Camera Mode and then go to Camera Setting. Select camera recording resolution between 12M (4608 x 2592), 8M (3840 x 2160) and 5M (3072 x 1728). Other settings are similar to Video Settings.

Media Setting



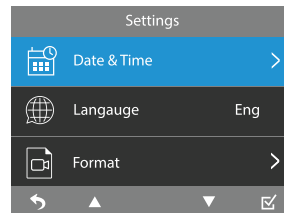
Screen Save

Screen will dim to a digital clock interface after the specified time you select. To turn on the display press any of the function buttons.

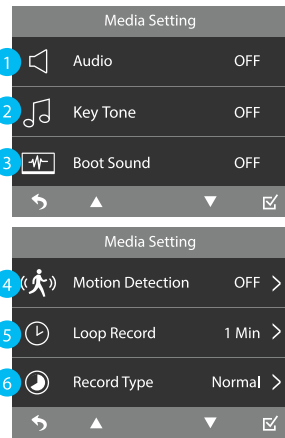
G-Sensor

When G-Sensor detects a sudden movement such as an impact or collision, it will trigger an Event Recording and the footage will be permanently stored and locked within the Event folder inside the MicroSD card. The level of sensitivity can be adjusted from High to Middle, Low. Turn OFF to disable G-Sensor function.

Note: The default G-Sensor sensitivity is set as Middle.



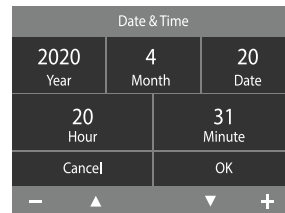
12



1. Select to turn On/Off the audio of recorded video files.
2. Turn On/Off the key tone for each button pressed.
3. Turn On/Off boot sound.
4. Select the level of sensitivity of the motion detection function.
5. Select the duration of each recorded footage. Select between 1 minute, 3 minutes and 5 minutes.
6. Select between normal video or time lapse video. (Refer to page 15)

Date & Time

Set the date and time before using the 4K Dash Cam as this will affect the time stamp on all recorded media files. Time stamp will always be displayed; it cannot be removed.

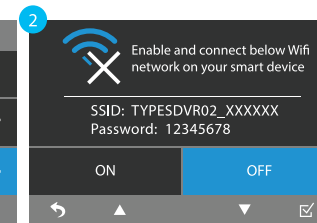
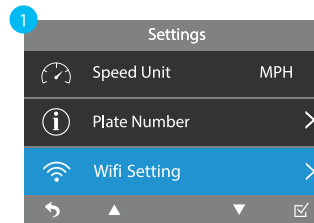


16. APP SETUP

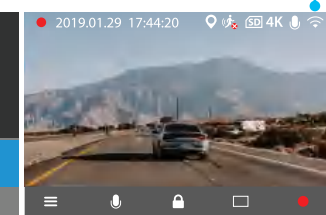
Auto sync with the Dash Cam

1. Open the 4K Dash Cam's main menu.
2. Go to **WiFi Setting** and turn it on.

Note: Default WiFi is set as On.

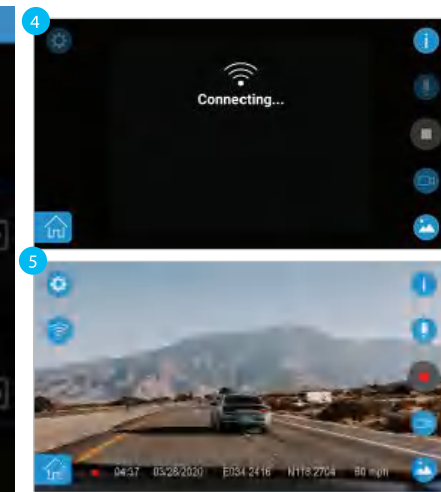


WiFi icon will appear if WiFi is turned on.



Android device

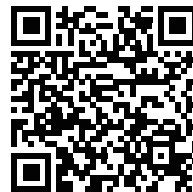
3. Open the TYPE S Drive APP and select the Dash Cam category. Select 4K Dash Cam from the list of Dash Cams. Press **Set Up Device**.
4. The APP will search for Dash Cam's SSID "TYPESDVR02_XXXXXX" and connects to Dash Cam automatically.
5. You should see the live view of Dash Cam on the main interface if the connection is successful.



17

15. DOWNLOADING THE APP

The 4K Dash Cam auto sync function enables you to control and play back recorded media files using your smartphone with the TYPE S Drive APP. Scan below QR code or search "TYPE S Drive" in the APP Store or Google Play. Download and install the APP.



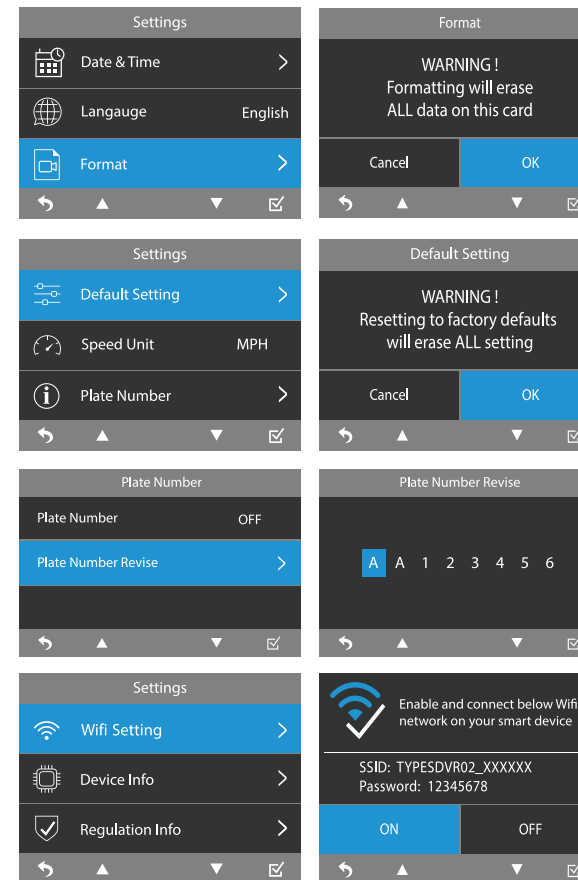
Compatible with iPhone 4s and higher, iPad3, iPad Mini, iPad Air and higher, and iPod touch 5th Generation and higher.
Requires iOS 9.0 or higher.

Compatible with phones with Android™ 5.0 or higher.

Once installed, open the APP and begin enjoying your TYPE S Drive APP.

Note: The APP is only available on smartphones with Apple iOS 9 or newer, and Android 5.0 or newer. The TYPE S Drive APP is not accessible from tablets, browsers, or PCs.

Tip: Check out the installation video at www.typesauto.com to help familiarize yourself with the installation process before starting.



Language
Default language of the 4K Dash Cam is English.

Format
Erase all data on the MicroSD card.

Default Setting
To reset all settings to their defaults.

Speed Unit
Select the unit of speed. Default speed unit is set as MPH.

Plate Number
Insert your license plate number and set it as ON. The license plate number will appear on all recorded media files along with time stamp.

WiFi Setting
Refer to page 17 on WiFi setting and auto sync with a smart device using the TYPE S Drive APP.

11. CAMERA STATUS & LED INDICATORS

Power / Mode Status	LED Indicators
Power On Dash Cam powers ON when the engine is turned on. To manually power ON, press and hold the power button for more than 3 seconds.	Blue LED light stays on when Dash Cam is powering on.
Recording	Blue LED light flashes.
Recording Stopped	Blue LED light stays on.
Firmware Upgrade	Red LED light stays on for 30 seconds, and then blue LED light flashes.
NOTE: When the LED light appears in purple color that means blue and red light are both on.	

12. RECORDING TIME

Memory Card Capacity	Total Recording Time (4K)	Total Recording Time (2K)	Total Recording Time (FHD)
16GB	At least 57 minutes	At least 107 minutes	At least 171 minutes
32GB	At least 119 minutes	At least 224 minutes	At least 359 minutes
64GB	At least 246 minutes	At least 462 minutes	At least 740 minutes
128GB	At least 490 minutes	At least 919 minutes	At least 1471 minutes

Note: If you use your own MicroSD card please insert it into the Dash Cam and use the format function under system setting page (refer to page 13) before first use.

13. TIME-LAPSE RECORDING LOGIC

Mode	Behavior
Normal	Without time-lapse record, captures 30 frames per 1 second.
Lapse 1s	Time-lapse record, captures 1 frame per 1 second.
Lapse 3s	Time-lapse record, captures 1 frame per 3 seconds.
Lapse 5s	Time-lapse record, captures 1 frame per 5 seconds.

14. TECHNICAL SPECIFICATIONS

Memory Management

Mode	Resolution	1 Minute Video Size	Loop Period (16GB SD Card)
4K	3840 X 2160	225MB	12865 / 225 = 57 Minutes
2K	2560 X 1440	120MB	12865 / 120 = 107 Minutes
FHD	1920 X 1080	75MB	12865 / 75 = 171 Minutes

Memory Card Capacity	System Reserve	Event & Video	Photo
16GB	0.435GB	12.865GB	1.2GB
32GB	0.870GB	26.930GB	1.2GB
64GB	1.755GB	55.545GB	1.2GB
128GB	3.450GB	110.35GB	1.2GB

FCC Warnings

This device complies with part 15 of the FCC rules. Operation is subject to the following two conditions: (1) this device may not cause harmful interference, and (2) this device must accept any interference received, including interference that may cause undesired operation.

Warning: Changes or modifications to this unit not expressly approved by the party responsible for compliance could void the user's authority to operate the equipment.

NOTE: This equipment has been tested and found to comply with the limits for a Class B digital device, pursuant to Part 15 of the FCC Rules. These limits are designed to provide reasonable protection against harmful interference in a residential installation. This equipment generates, uses, and can radiate radio frequency energy and, if not installed and used in accordance with the instructions, may cause harmful interference to radio communications. However, there is no guarantee that interference will not occur in a particular installation. If this equipment does cause harmful interference to radio or television reception, which can be determined by turning the equipment off and on, the user is encouraged to try to correct the interference by one or more of the following measures:

- Reorient or relocate the receiving antenna.
- Increase the separation between the equipment and receiver.
- Connect the equipment into an outlet on a circuit different from that to which the receiver is connected.
- Consult the dealer or an experienced radio/TV technician for help.

Radiation Exposure Statement

To comply with FCC RF exposure compliance requirements, this grant is applicable to only mobile configurations. The antennas used for this transmitter must be installed to provide a separation distance of at least 20cm from all persons and must not be co-located or operating in conjunction with any other antenna or transmitter.