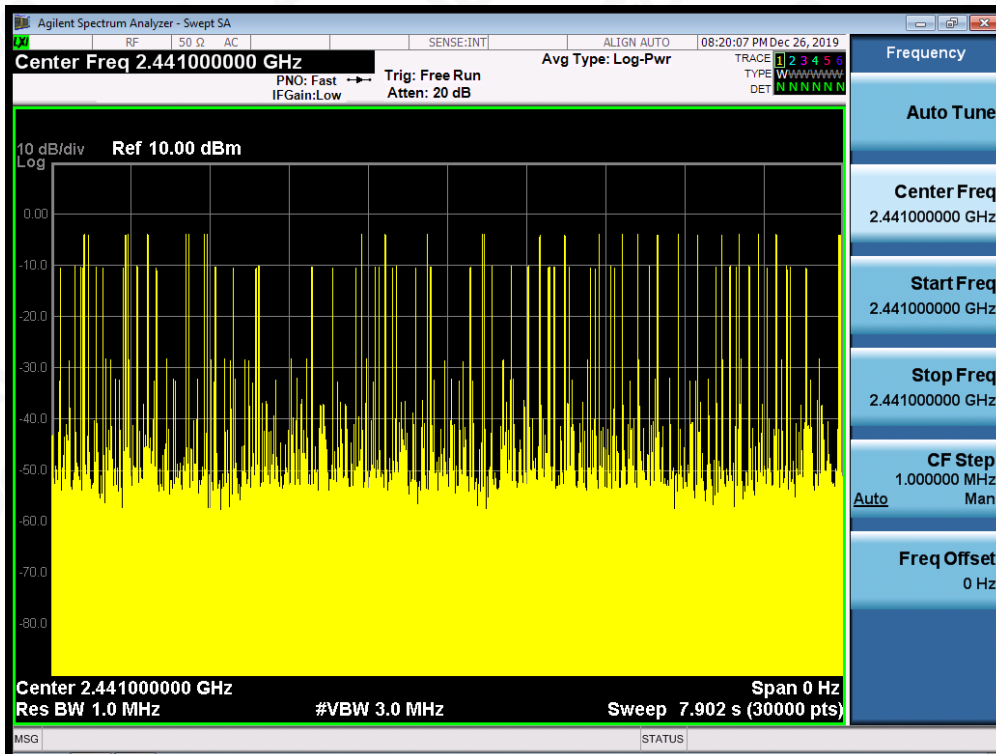
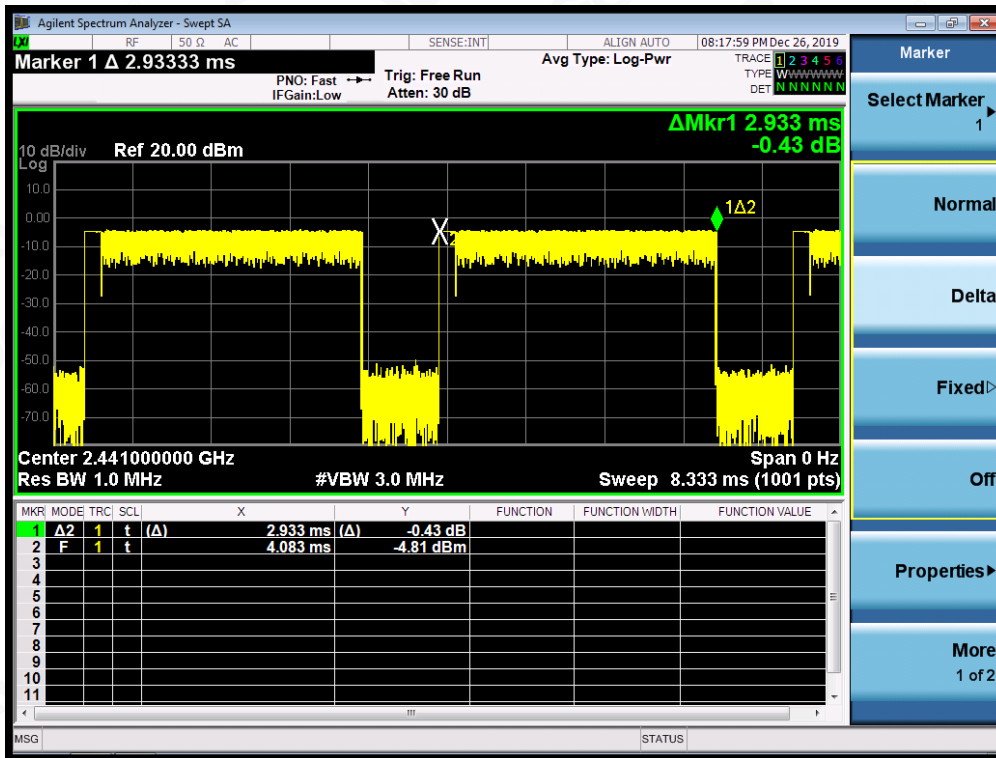


TEST PLOT OF MIDDLE CHANNEL



Attestation of Global Compliance

Attestation of Global Compliance(Shenzhen)Co.,Ltd.

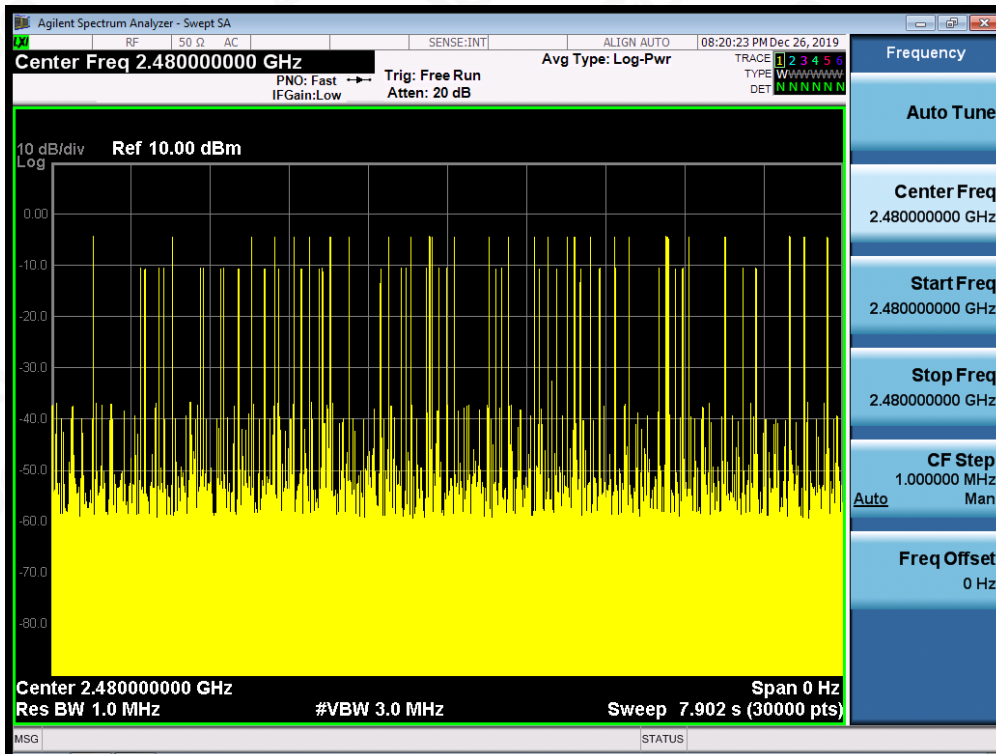
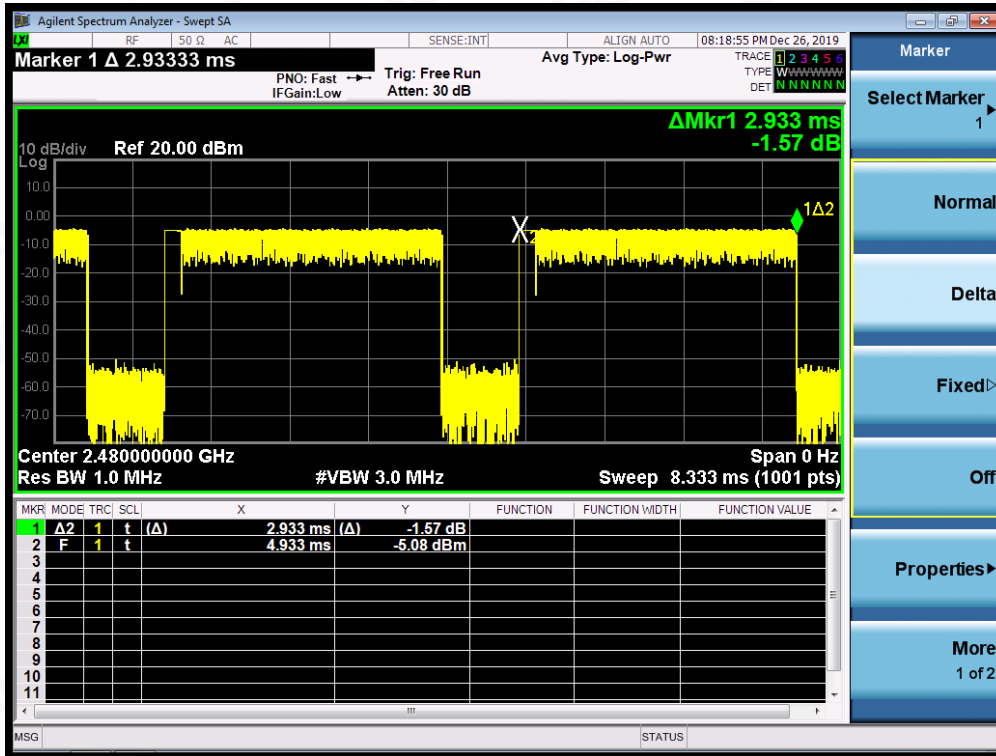
Add: 2/F., Building 2, Sanwei Chaxi Industrial Park, Sanwei Community,  
Hangcheng Street, Bao'an District, Shenzhen, Guangdong, China

Tel: +86-755 2523 4088

E-mail: agc@agc-cert.com

Service Hotline: 400 089 2118

### TEST PLOT OF HIGH CHANNEL



Attestation of Global Compliance

Attestation of Global Compliance(Shenzhen)Co.,Ltd.

Add: 2/F., Building 2, Sanwei Chaxi Industrial Park, Sanwei Community,  
Hangcheng Street, Bao'an District, Shenzhen, Guangdong, China

Tel: +86-755 2523 4088

E-mail: agc@agc-cert.com

Service Hotline: 400 089 2118

### 13. FREQUENCY SEPARATION

#### 13.1. MEASUREMENT PROCEDURE

The EUT shall have its hopping function enabled. Use the following spectrum analyzer settings:

1. Span: Wide enough to capture the peaks of two adjacent channels.
  2. RBW: Start with the RBW set to approximately 30% of the channel spacing; adjust as necessary to best identify the center of each individual channel.
  3. Video (or average) bandwidth (VBW)  $\geq$  RBW.
  4. Sweep: Auto. e) Detector function: Peak. f) Trace: Max hold. g) Allow the trace to stabilize.
- Use the marker-delta function to determine the separation between the peaks of the adjacent channels.

#### 13.2. TEST SETUP (BLOCK DIAGRAM OF CONFIGURATION)

Same as described in section 6.2

#### 13.3. MEASUREMENT EQUIPMENT USED

The same as described in section 6.3

#### 13.4. LIMITS AND MEASUREMENT RESULT

CHANNEL	CHANNEL SEPARATION	LIMIT	RESULT
	KHz	KHz	
CH01-CH02	1000	$\geq 25$ KHz or 2/3 20 dB BW	Pass

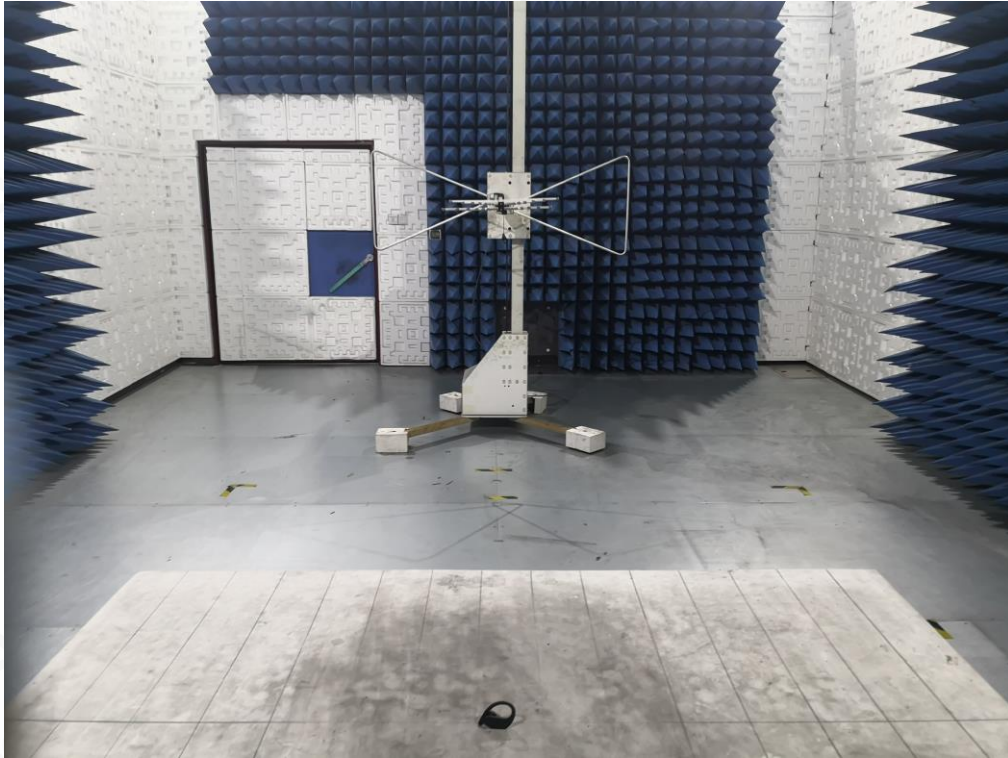
TEST PLOT FOR FREQUENCY SEPARATION



Note: The  $\pi/4$ -DQPSK modulation is the worst case and recorded in the report.

### APPENDIX A: PHOTOGRAPHS OF TEST SETUP

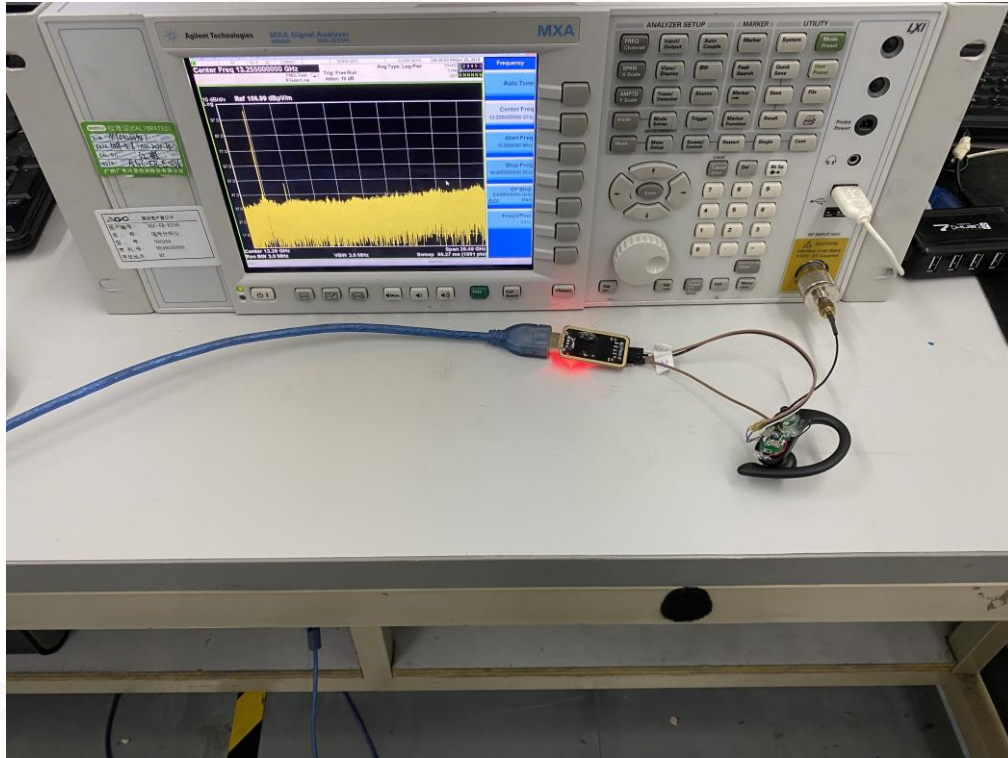
#### RADIATED EMISSION TEST SETUP BELOW 1GHZ



#### RADIATED EMISSION TEST SETUP ABOVE 1GHZ



**CONDUCTED TEST SETUP**



**APPENDIX B: PHOTOGRAPHS OF EUT**

**ALL VIEW OF EUT**



**TOP VIEW OF EUT**



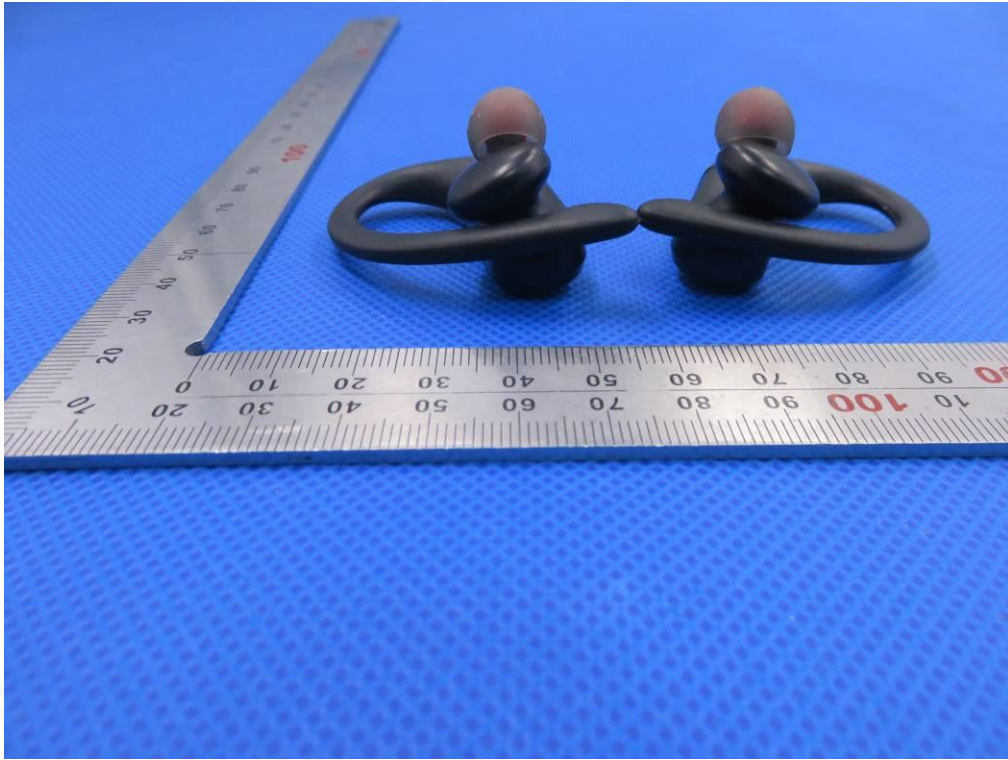
BOTTOM VIEW OF EUT



FRONT VIEW OF EUT



BACK VIEW OF EUT

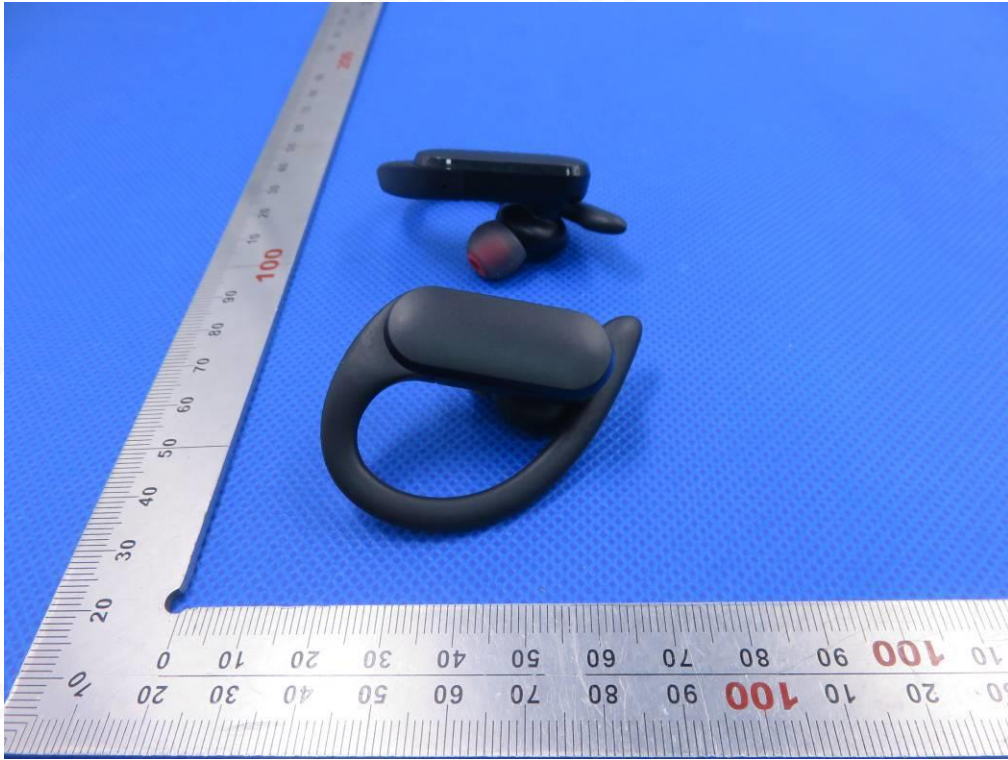


LEFT VIEW OF EUT





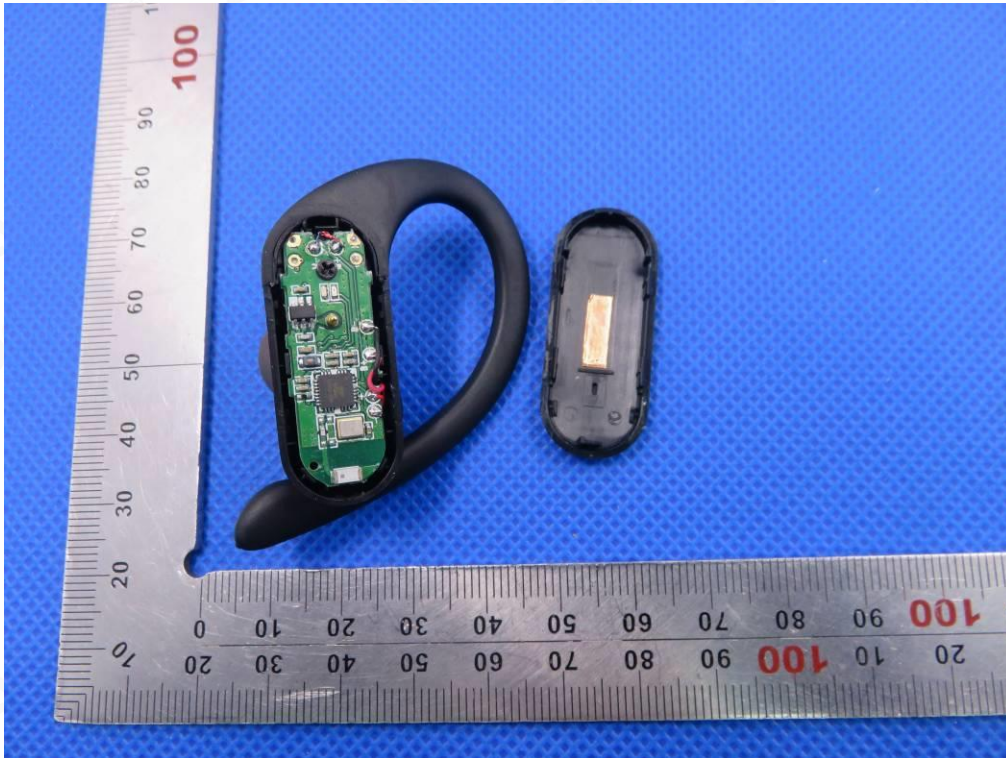
RIGHT VIEW OF EUT



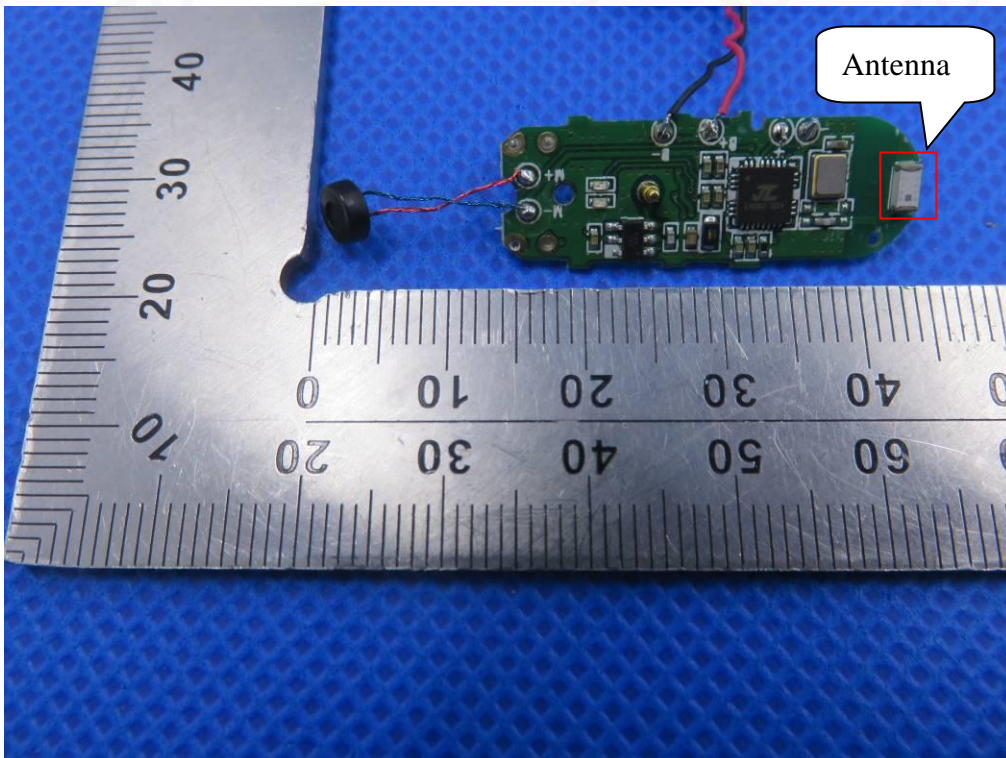
VIEW OF EUT(PORT)-Left



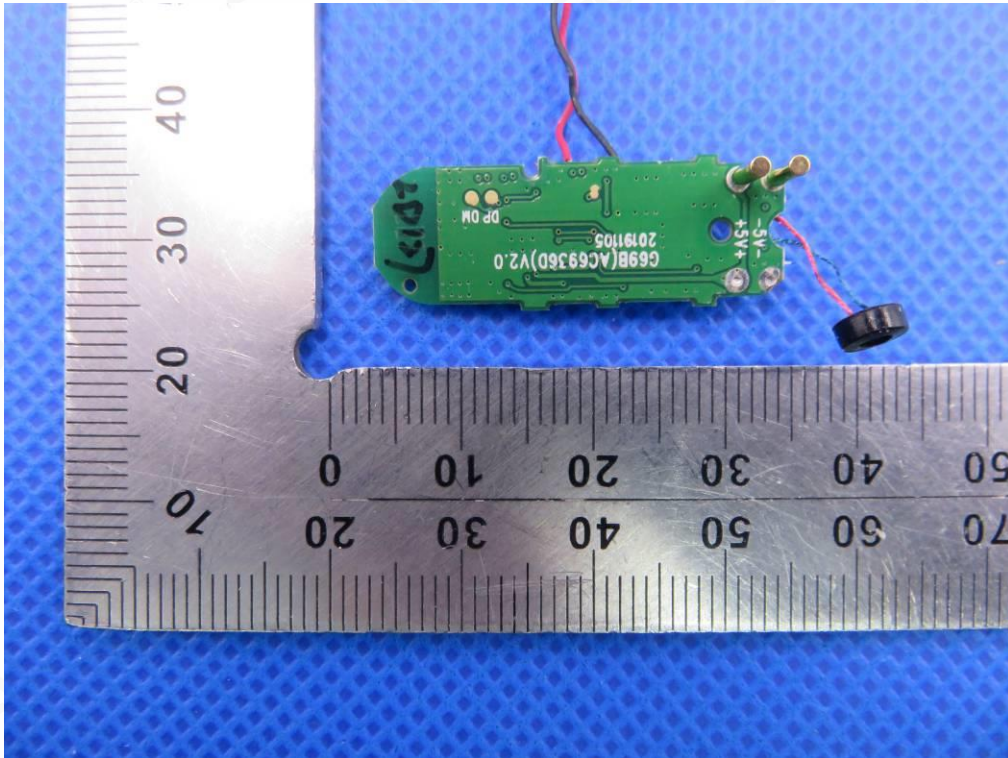
OPEN VIEW OF EUT



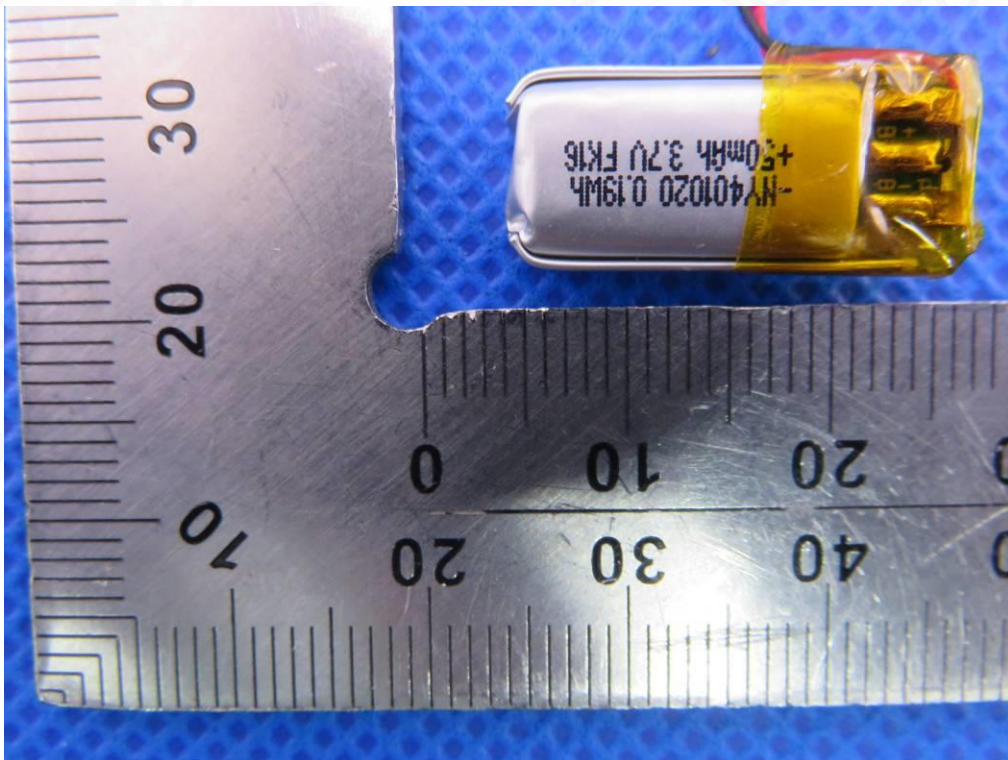
INTERNAL VIEW-1 OF EUT



INTERNAL VIEW-2 OF EUT



VIEW OF BATTERY



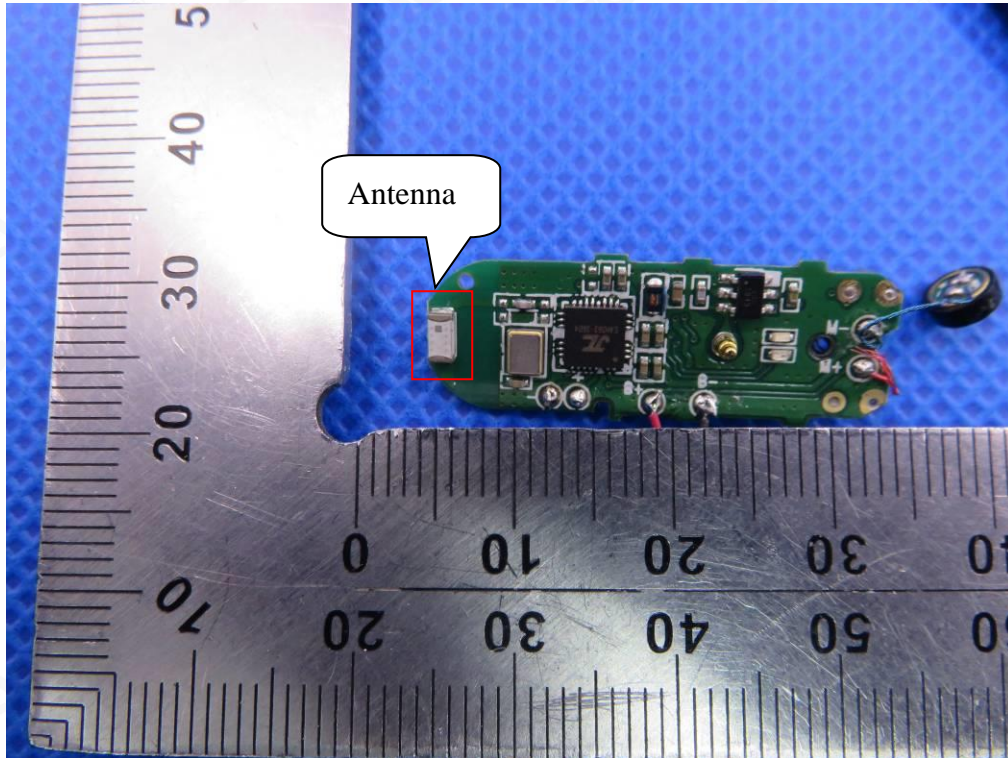
VIEW OF EUT(PORT)-Right



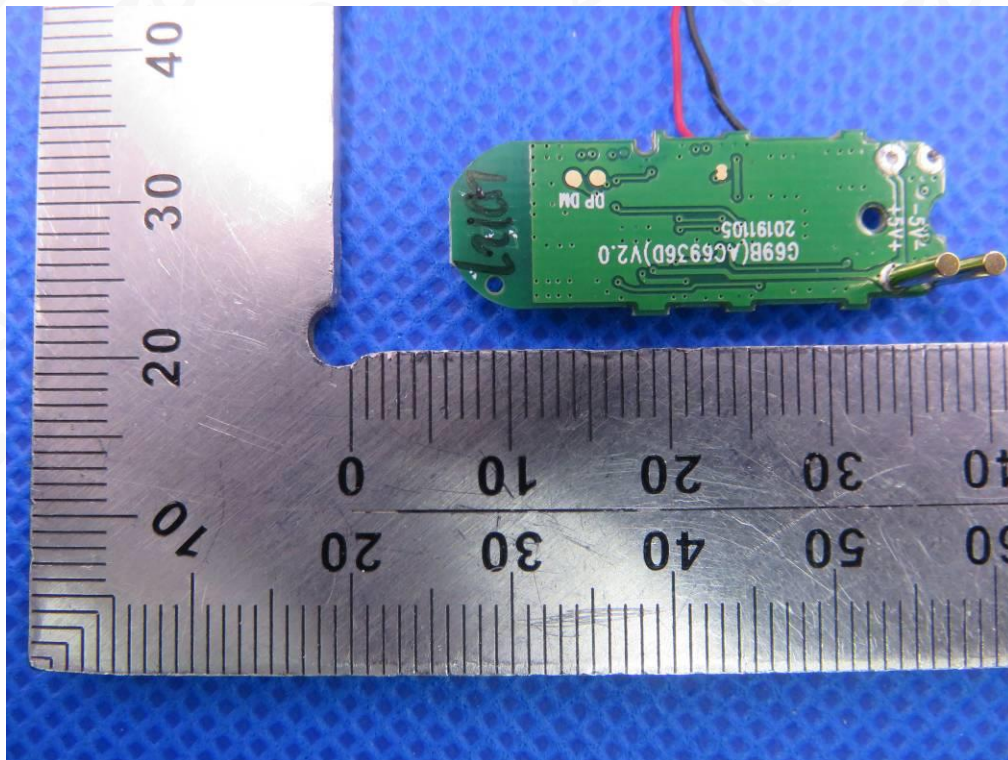
OPEN VIEW OF EUT



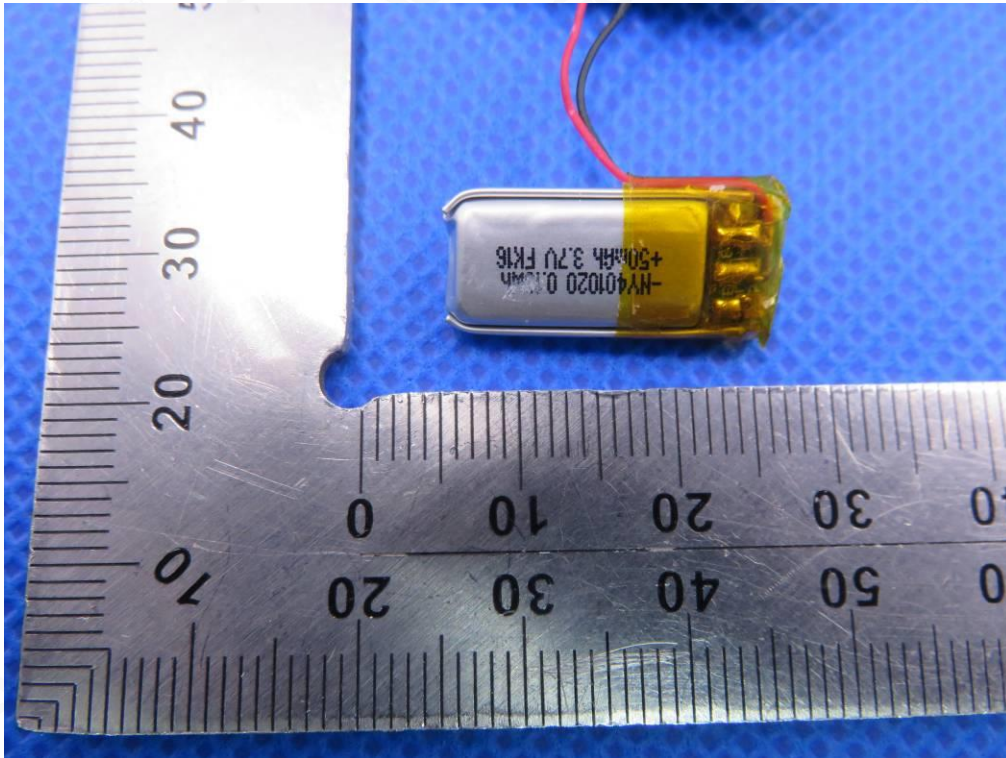
INTERNAL VIEW-1 OF EUT



INTERNAL VIEW-2 OF EUT



**VIEW OF BATTERY**



**Charging Dock**

**TOP VIEW OF EUT**



BOTTOM VIEW OF EUT



FRONT VIEW OF EUT



BACK VIEW OF EUT

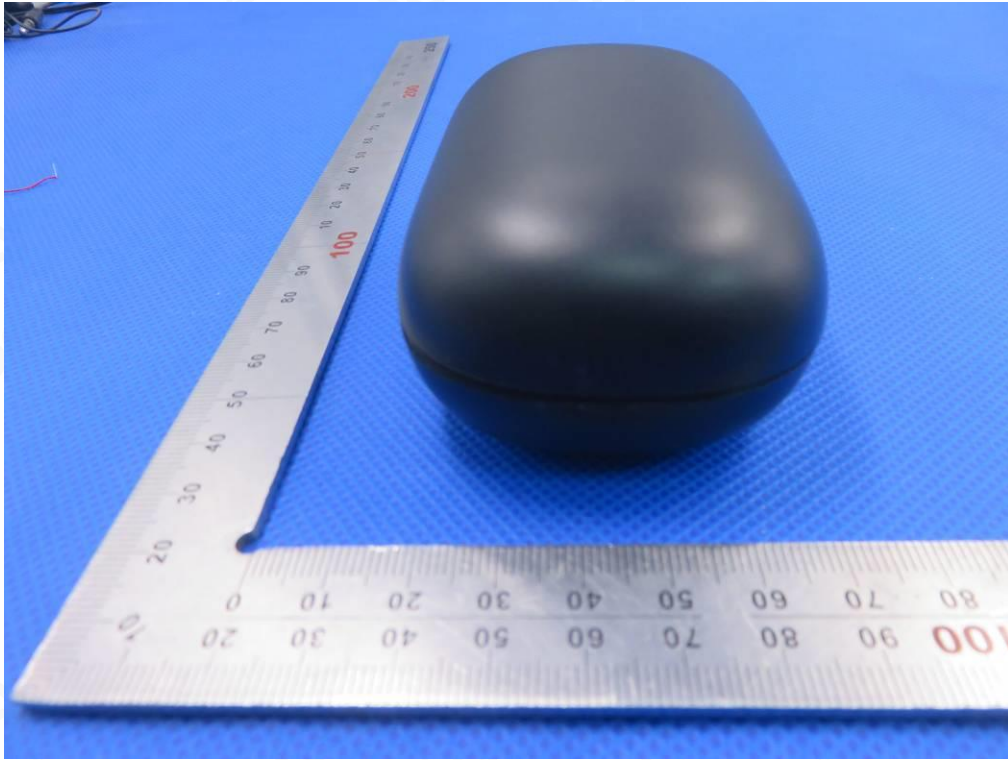


LEFT VIEW OF EUT

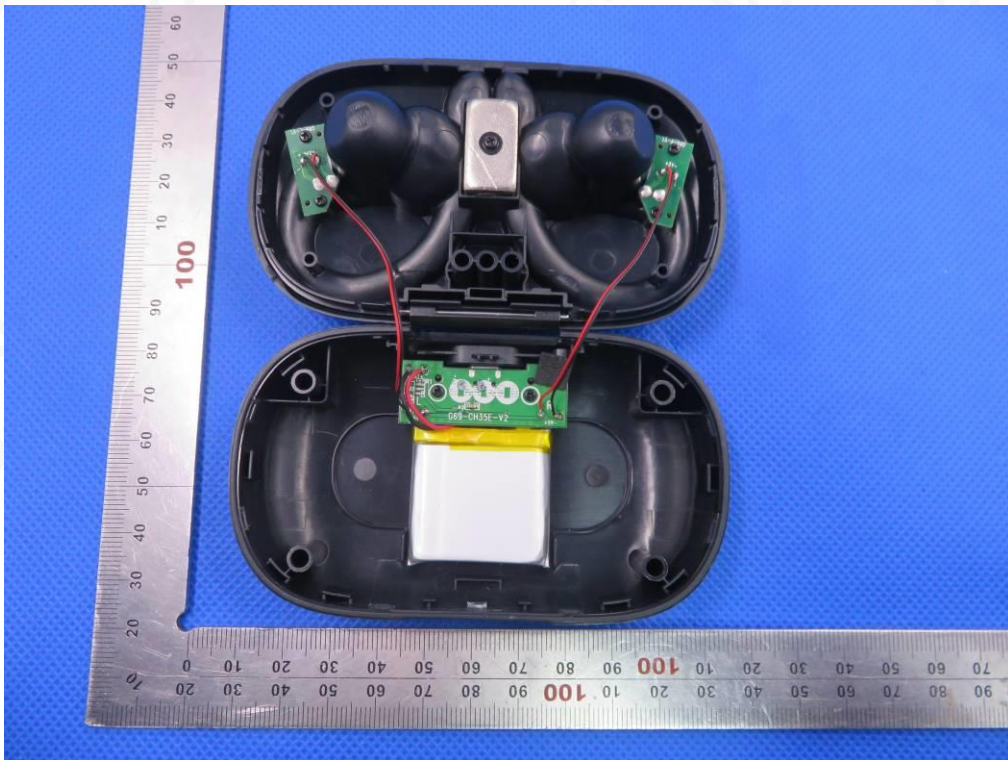




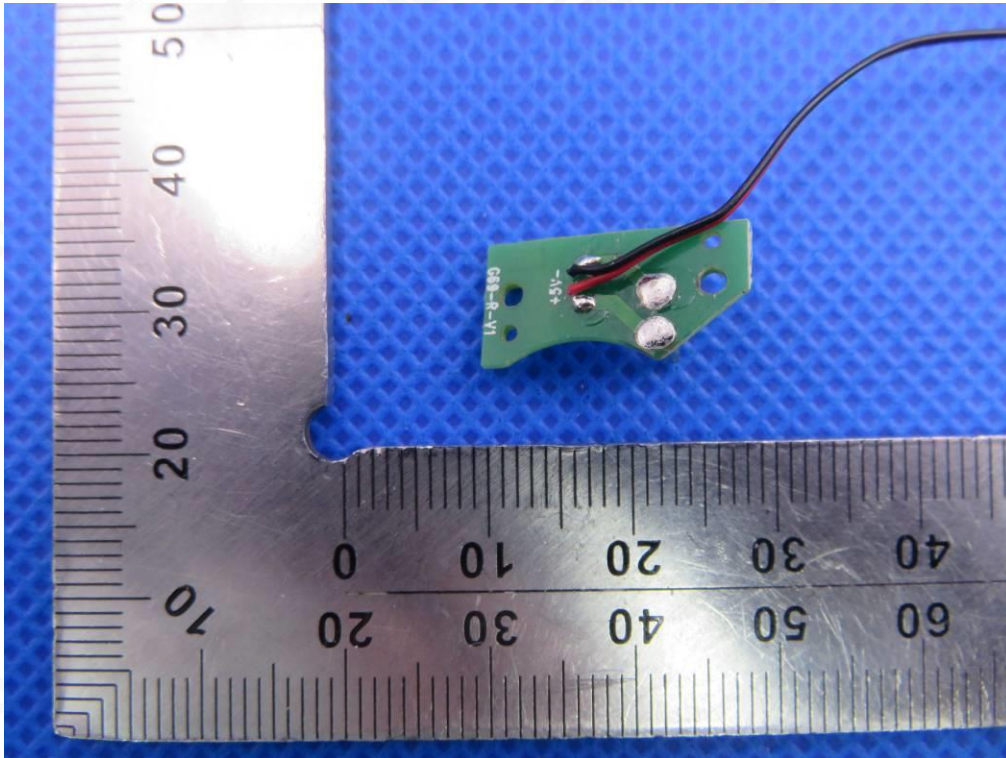
RIGHT VIEW OF EUT



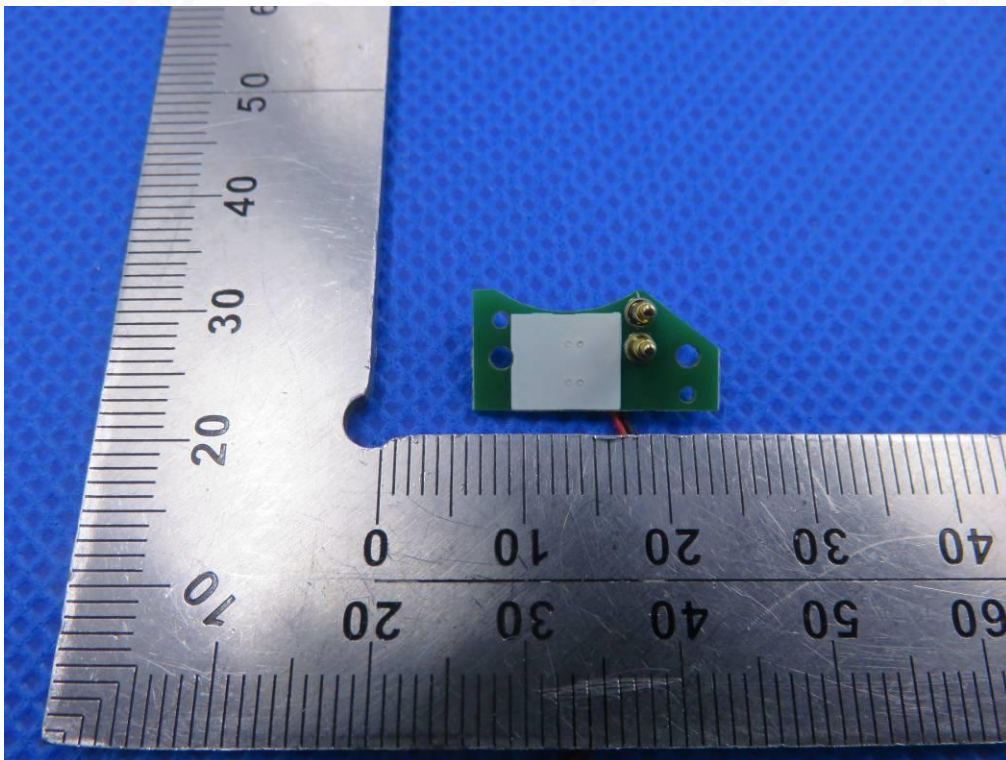
OPEN VIEW OF EUT



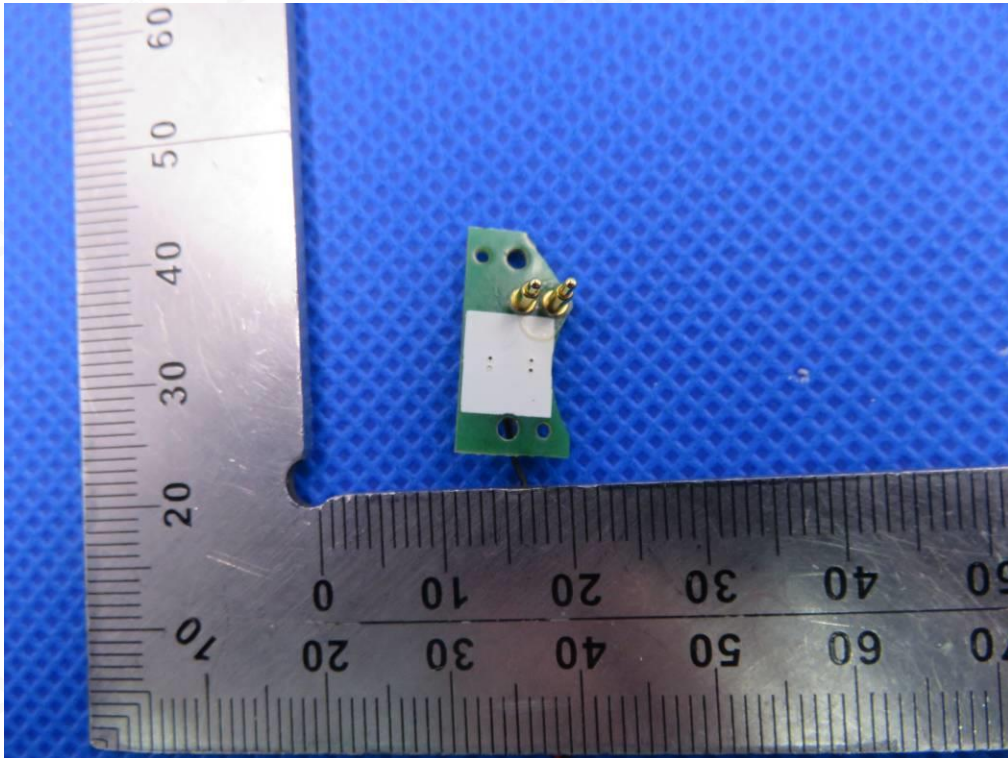
INTERNAL VIEW-1 OF EUT



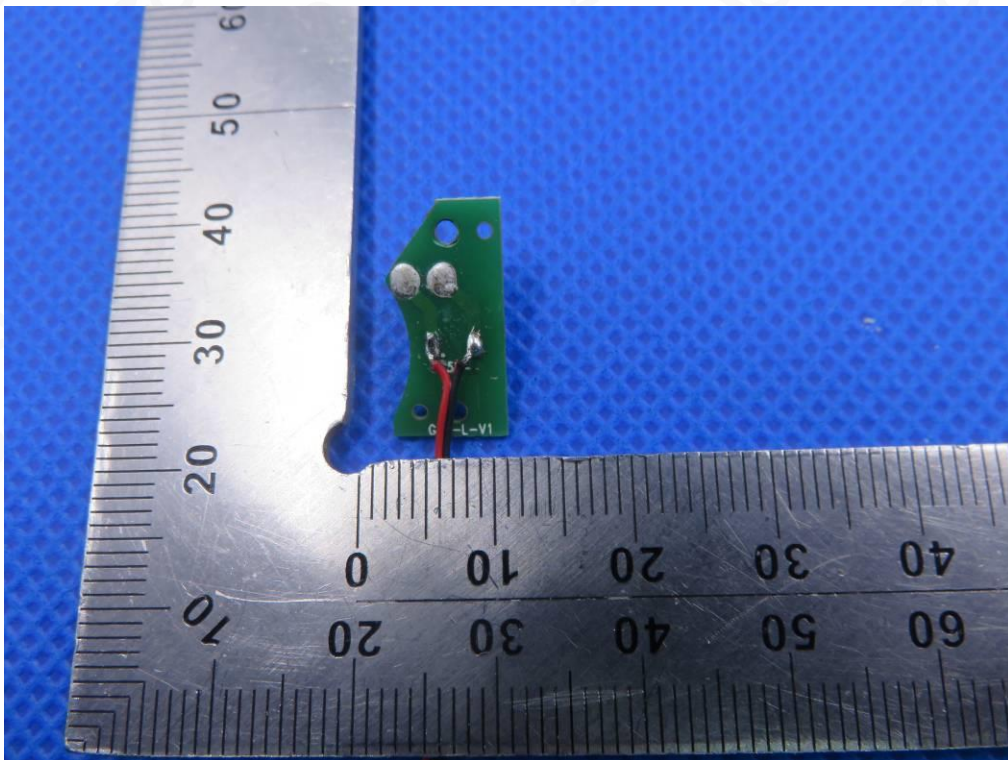
INTERNAL VIEW-2 OF EUT



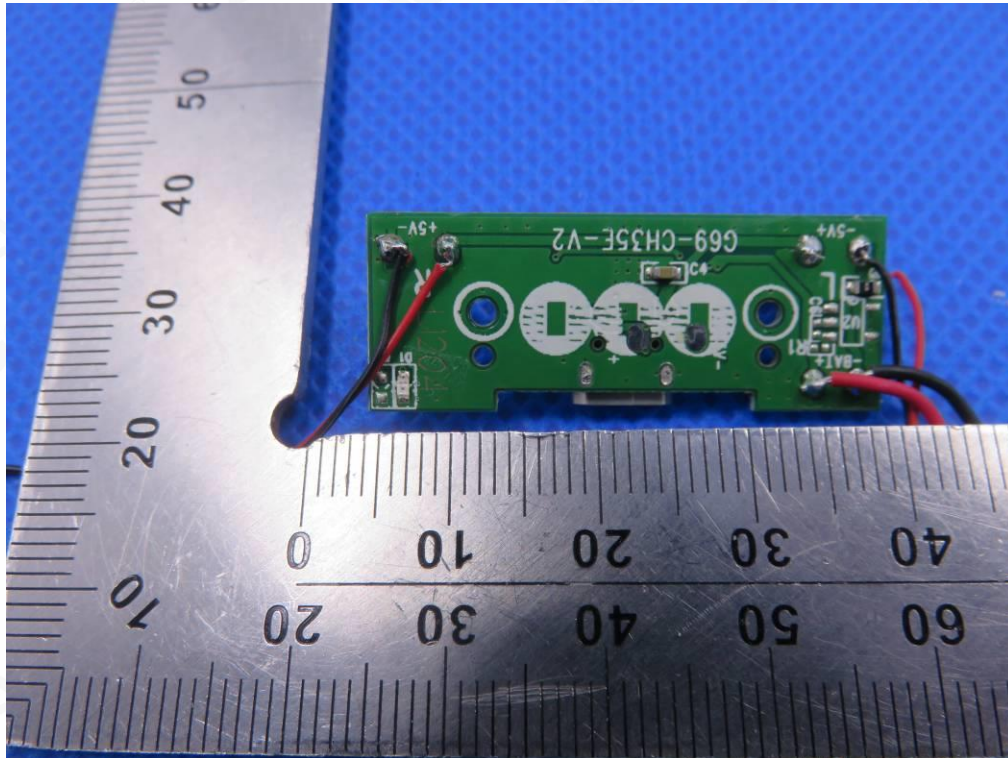
INTERNAL VIEW-3 OF EUT



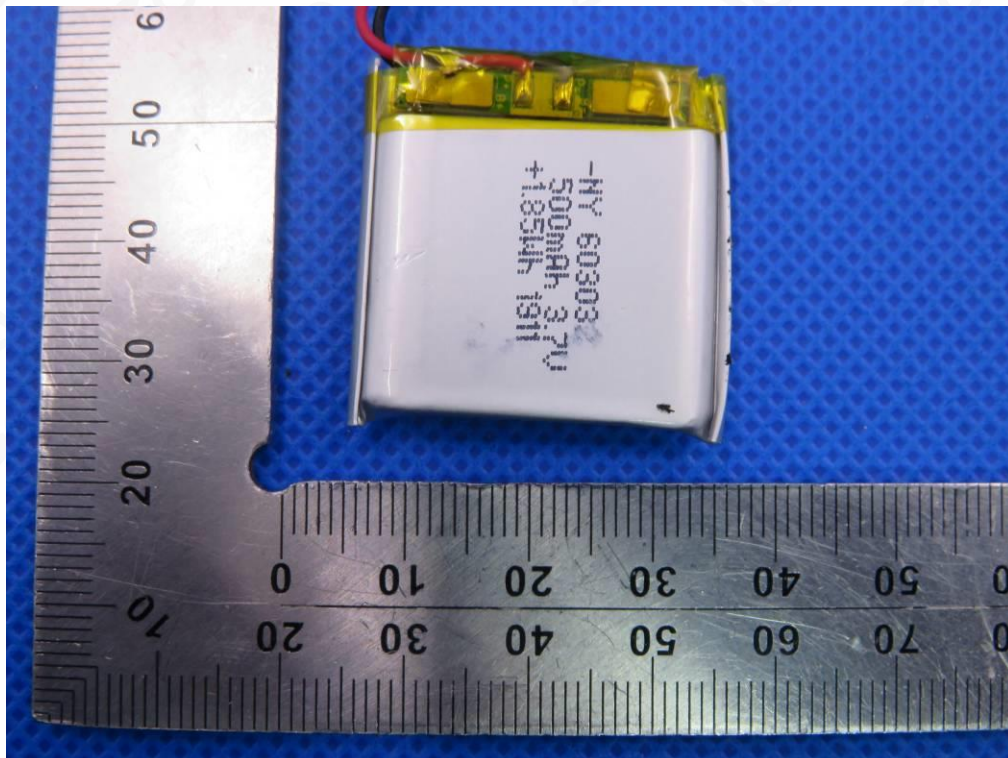
INTERNAL VIEW-4 OF EUT



INTERNAL VIEW-5 OF EUT



VIEW OF BATTERY



----END OF REPORT----

