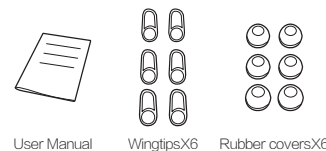
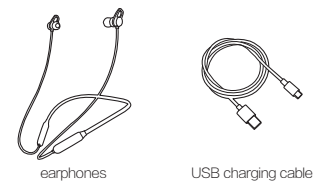


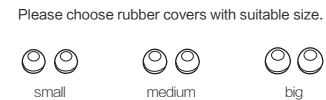
UCOMX

Lightport (G02S)  
Wireless earphones User Manual  
www.ucomx.com

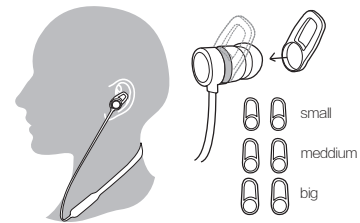
Package Contents



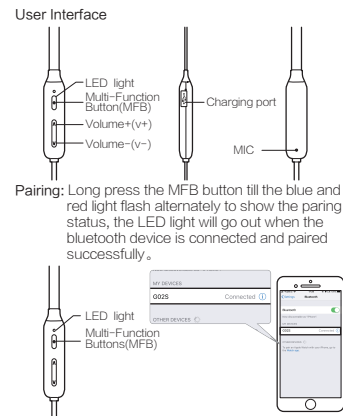
Quick Guide



Please choose rubber covers with suitable size.



Quick Guide



Function & Operation

**Power On:** Long press MFB button for 2 seconds while on power-off status, the blue light will flash for 1 time and with voice prompt "power on".  
**Power Off:** Long press MFB button for 3 seconds while on power-on status, the red light will be bright for 2 seconds and then go out, with voice prompt "power off".  
**Pairing:** Press and hold the MFB button until the red and blue indicators flash alternately, when on power-off status.  
**Bluetooth connection:** Search "G02S" on cellphone and click it then the earphone enter into the pairing mode, then the earphone will connect to the mobile.  
**Last number redial:** Double click MFB button to call the last number while standby status.  
**Incoming call answer:** Short press MFB button to answer the call while there is an incoming call.  
**Call hang up:** Short press MFB button to hang up the call while calling.  
**Incoming call reject:** Long press V- button for 2 seconds to reject call.  
**Mute switch:** press V- button for 2 seconds for call/mute switch.

Function & Operation

**Audio transitions:** Press Vol+ button for 2 seconds for audio switch.  
**Low-power warning:** The red light will flash 1 time every 20 seconds, voice prompt with "battery low" every 60 seconds.  
**Low-power and turn off:** Battery with low voltage and automatic turn off.  
**Volume adjustment:** Short press V+ or V- button, the volume will increase or decrease one bar.  
**Music pause:** Short press MFB button while music playing status.  
**Music play:** Short press MFB button while music pause status.  
**Previous song:** Long press V- button for 2 seconds while music playing status.  
**Next song:** Long press V+ button for 2 seconds while music playing status.  
**Voice dialing:** Please long press the MFB button for 2 seconds and then release while standby status. (Your cellphone shall support this function).  
**Connect with two devices:** 1. turn off the bluetooth function after paired to the first cellphone; 2. pair to the second cellphone; 3. Turn on the bluetooth function on the first cellphone and connect to the bluetooth by hand.

Function & Operation

**Eliminate info:** Long press MFB button 5 seconds to remove the paired data from earphones while on charging status.  
**Charge:** Time for charge is about 1.5-2 hrs, the red light will bright while on charging status, the blue light will light when full-charged.

Safety Precaution

- Do not tear down or modify the earphone. Or it might be damaged or malfunctioned. Losses due to resort are not under warranty.
- Do not use in the environments where Ingress Protection (IP) rating exceeds limitation or expose to excess humidity. Damages resulting from liquid is not under warranty.
- Do not expose the earphone in extreme weather (below 0° C degree or above 45° C degree).
- Keep the earphones indicating light away from children or animal eyes.
- Do not use the earphone in thunderstorm weather which might cause malfunction and increase the risk of electric shock.

Battery Warning

The product contains built-in lithium battery. To avoid explosion, please do not expose product under intense sunlight, and keep it away from the fire. Dispose the lithium battery according to your local laws and regulations, do not dispose it as regular household garbage. Unless a special instrument is given in your manual or quick start manual, the lithium battery should not be taken out or replaced by the user, or the product might be damaged and cause other dangers.

FCC Warning

Any Changes or modifications not expressly approved by the party responsible for compliance could void the user's authority to operate the equipment.  
This device complies with part 15 of the FCC Rules. Operation is subject to the following two conditions:  
(1) This device may not cause harmful interference, and (2) this device must accept any interference received, including interference that may cause undesired operation.

FCC Radiation Exposure Statement

This equipment complies with FCC radiation exposure limits set forth for an uncontrolled environment. This transmitter must not be co-located or operating in conjunction with any other antenna or transmitter.

**Note:** This equipment has been tested and found to comply with the limits for a Class B digital device, pursuant to part 15 of the FCC Rules. These limits are designed to provide reasonable protection against harmful interference in a residential installation. This equipment generates uses and can radiate radio frequency energy and, if not installed and used in accordance with the instructions, may cause harmful interference to radio communications. However, there is no guarantee that interference will not occur in a particular installation. If this equipment does cause harmful interference to radio or television reception, which can be determined by turning the equipment off and on, the user is encouraged to try to correct the interference by one or more of the following measures:

- Reorient or relocate the receiving antenna.
- Increase the separation between the equipment and receiver.
- Connect the equipment into an outlet on a circuit different from that to which the receiver is connected.
- Consult the dealer or an experienced radio/TV technician for help.

Frequency range: 2402-2480MHz for CE, 2402-2480MHz for FCC  
output power: 6.22dBm for CE, 6.46dBm for FCC  
Shenzhen Sande Dacom Electronics Co., Ltd.  
ADD: 2/4/5F, Building 1, NO.10 East Area of ShangXue Science & Technology Industrial Park, BanTian street LongGang district, Shenzhen, China

| Warranty card      |                       |
|--------------------|-----------------------|
| Dealer information | Item                  |
|                    | Dealer name           |
|                    | Product series number |
| User information   | Telephone number      |
|                    | Date of sales         |
| User information   | User address          |
|                    | Contact address       |
| Remark             | E-mail                |

The speaker has one year free warranty service from the date of purchase, for any deliberate damage should charge warranty fee