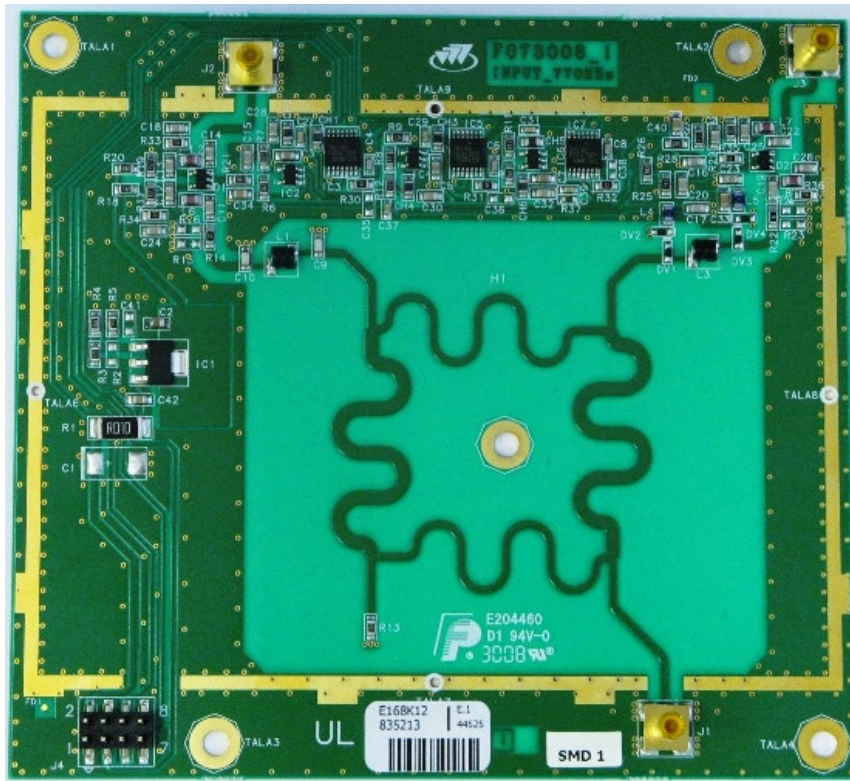
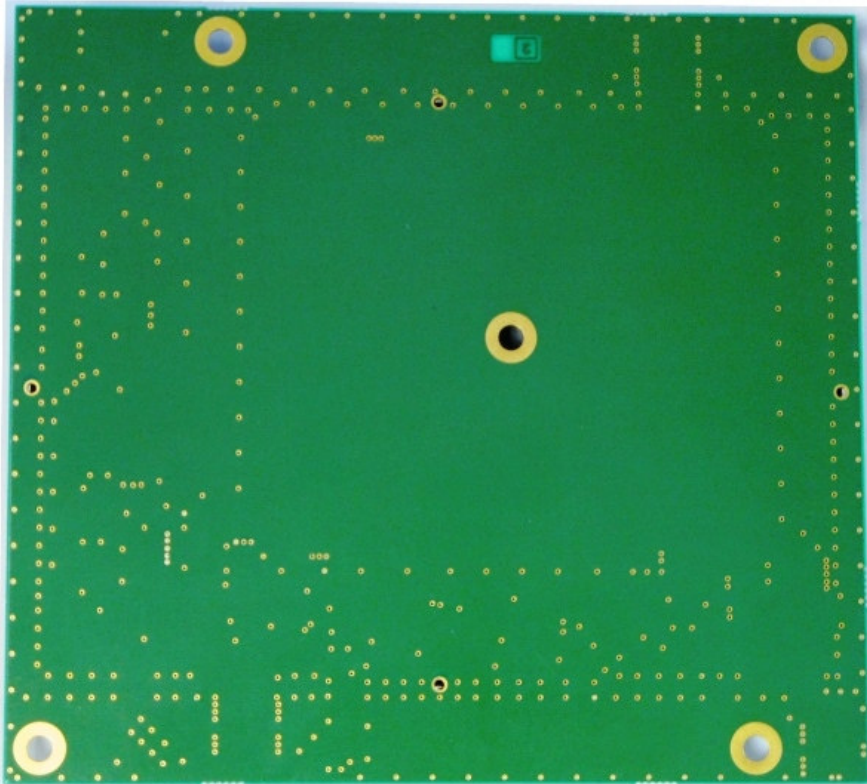
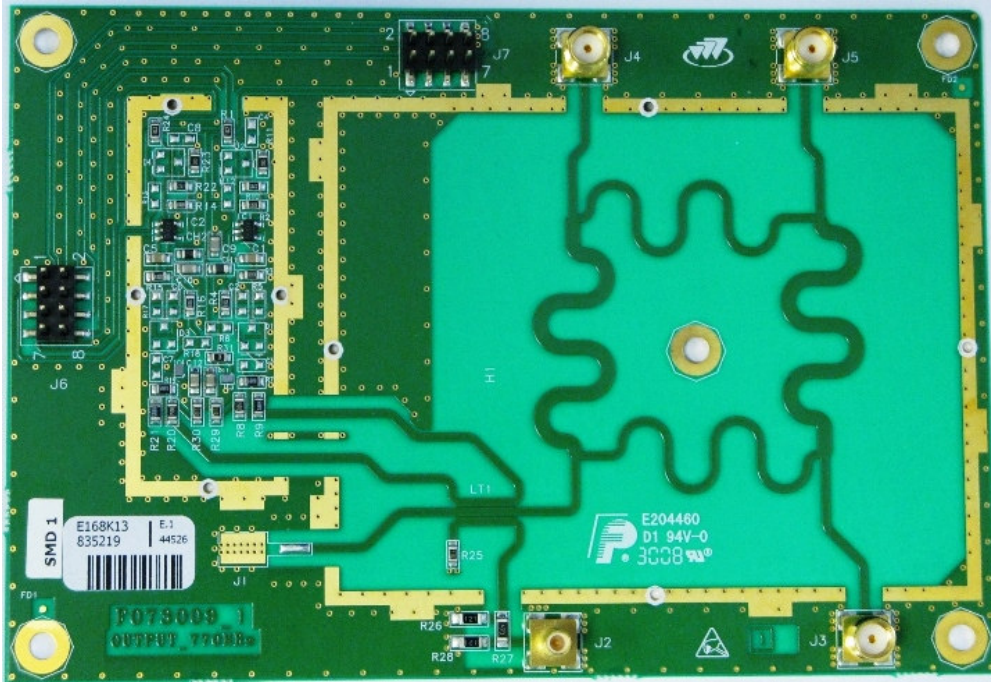
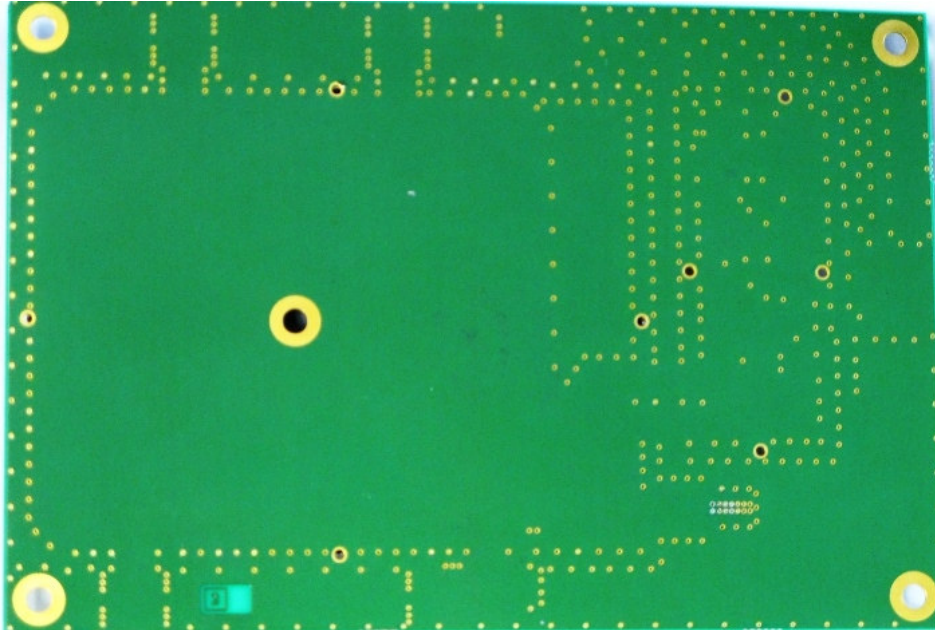
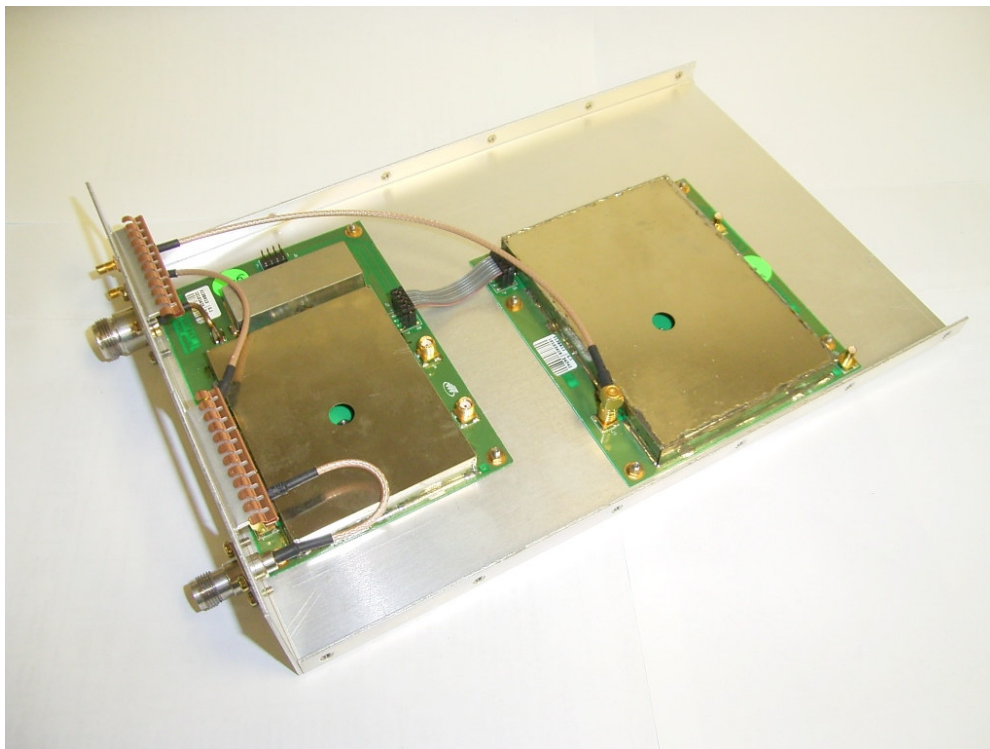
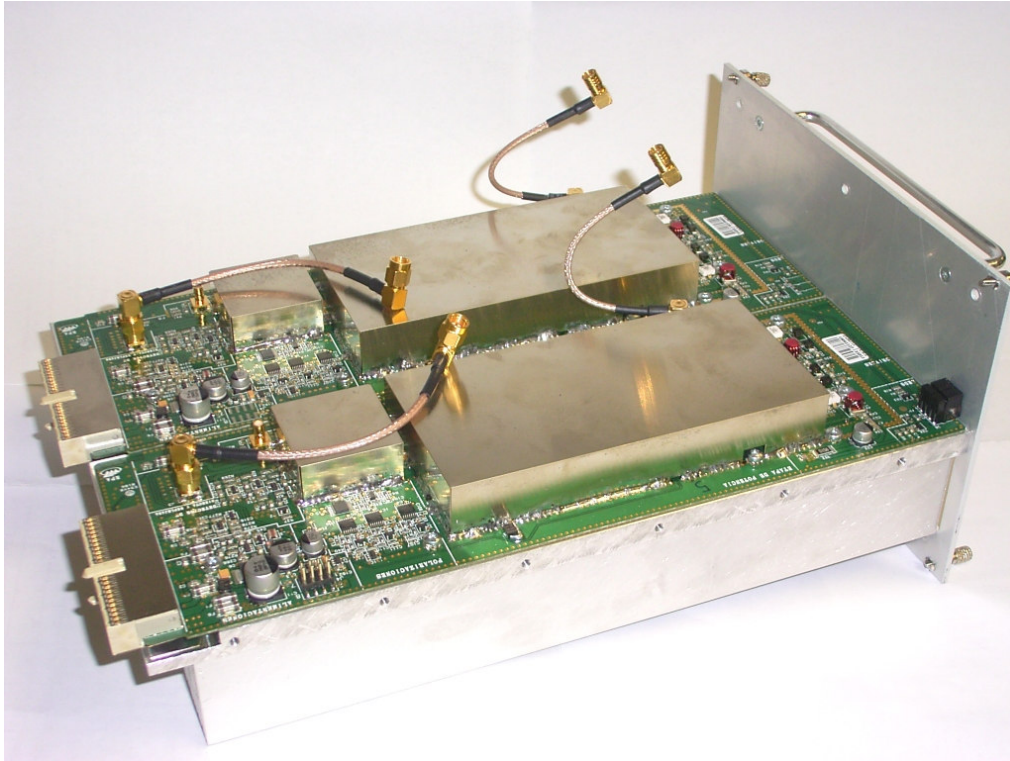


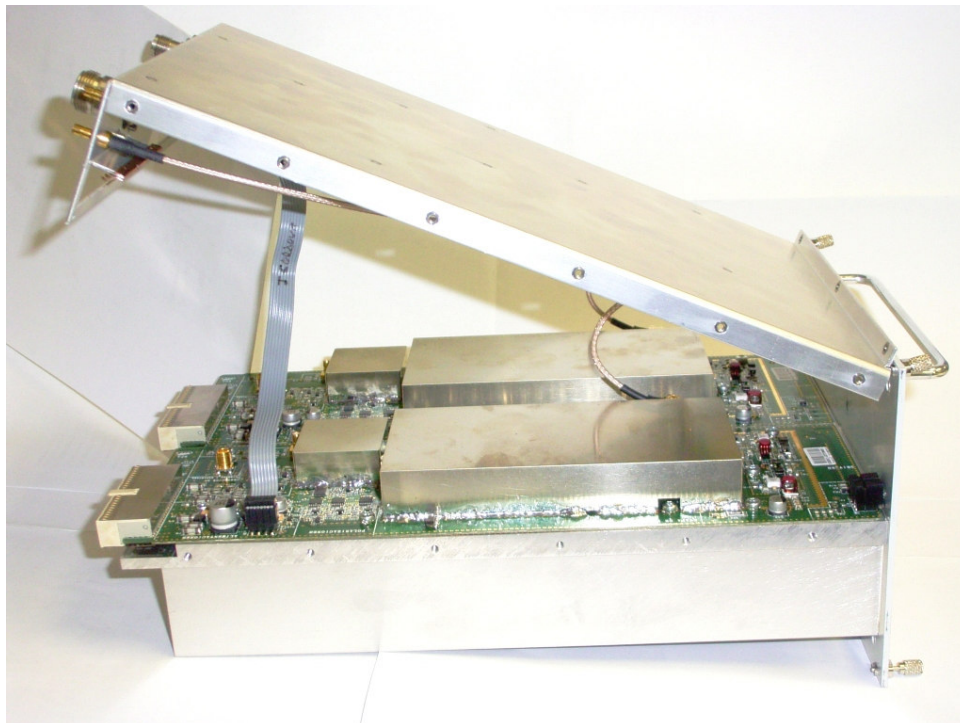
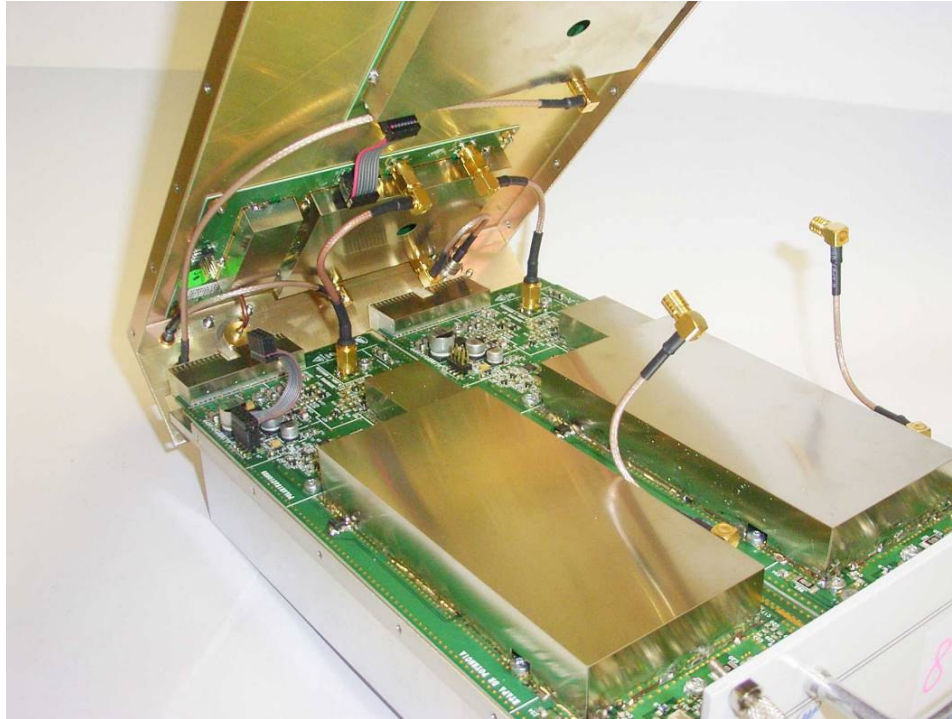
1.3 INPUT PCB TOP PICTURE


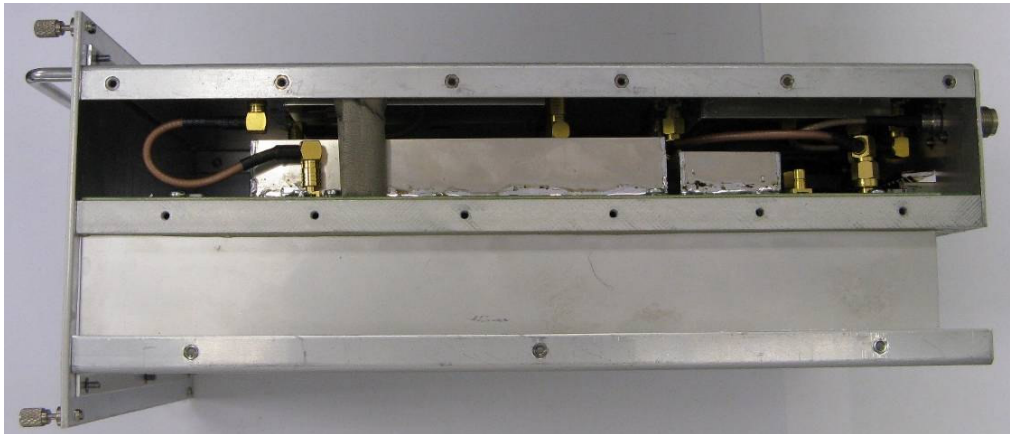
1.4 **NPUT PCB BOTTOM PICTURE**

1.5 **OUTPUT PCB TOP PICTURE**

1.6 OUTPUT PCB BOTTOM PICTURE

1.7 RPA GENERAL PICTURES





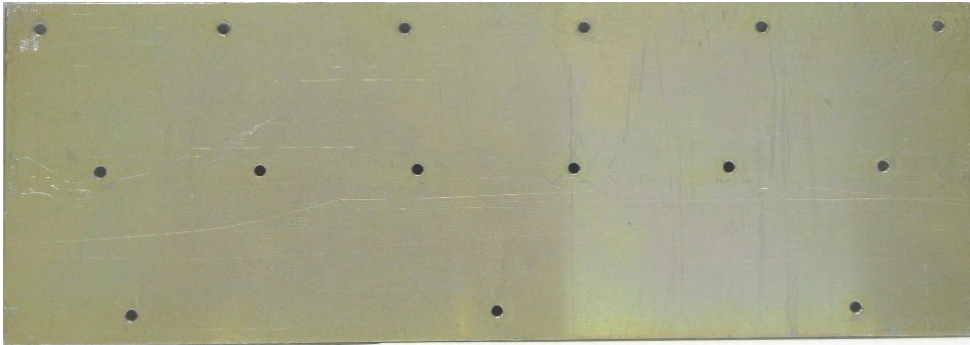
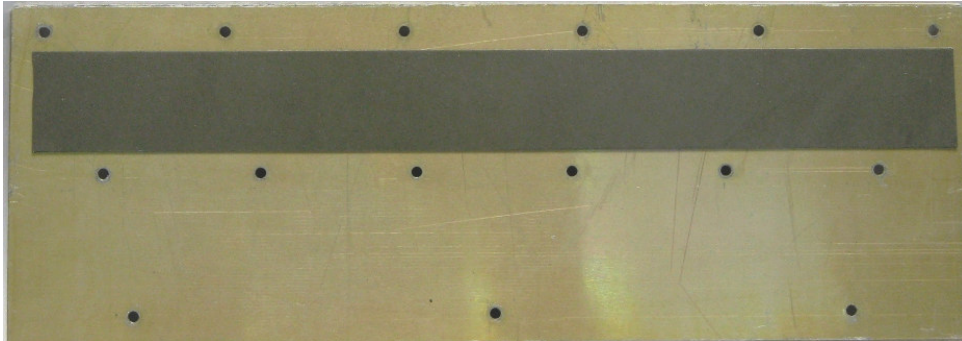


**DOSSIER RPA P25
RF UNIT**

Code:
DOSSIER_RPA_P25_RF_Unit.doc

Date: 28/04/09

Page: 14 of 14





DOSSIER RPS RF Unit

PRODUCT: RPS

CODE: B800014_FDS

VERSION: 01

REVISION: 00

DATE: 28/12/07

CLASSIFICATION:

General information

Internal document

DOCUMENT MAINTENANCE

THIS DOCUMENT HAS 5 PAGES

EDIT.	DATE	AUTHOR	DESCRIPTION
1.0	28/12/07	A. Narvaiza	Pictures of RPS

DOCUMENT APPROVAL

ACTIVITY	NAME	DATE	SIGNATURE
Prepared			
Revised Project Manager			
Approved R&D Director			

 teltronic	DOSSIER RPS RF UNIT	Code: DOSSIER_RPS_RF_Unit.doc	
		Date: 28/12/07	Page: 2 of 5

Disclaimer

Although every reasonable effort has been made to ensure the accuracy of the information contained herein and any other referred document, this should not be construed as a commitment on the part of Teltronic S.A. Unipersonal, and the liability of Teltronic S.A. Unipersonal for any errors and omissions shall be limited to the correction of such errors and omissions. Teltronic S.A. Unipersonal welcomes any comment as a way to improve any delivered documentation.

The information contained herein has been prepared for the use of appropriately trained personnel, and it is intended for the purpose of the agreement under which the information is submitted. Any party using or relying upon this information assumes full responsibility for such use and in no event shall Teltronic S.A. Unipersonal be liable to anyone for especial, collateral, incidental, or consequential damages in connection with or arising out of the use of this information.

The information or statements given in these documents regarding the suitability, capacity or performance of the mentioned hardware or software products cannot be considered binding but shall be defined in the agreement made between Teltronic S.A. Unipersonal and the customer.

Teltronic S.A. Unipersonal reserves the right to revise these documents and to make changes to its content at any time, without prior notification.

Copyrights

No part of the information contained herein and the other referred documents may be copied, distributed or transmitted by any means to any other party without prior written permission of Teltronic S.A. Unipersonal. The distribution of this document may be also covered by NDA (non-disclosure agreement) between Teltronic S.A. Unipersonal and the receiver.

Please also note that part of these contents even may be covered by patent rights.

This document, the referred documents and the described product are considered protected by copyright according to the applicable laws.

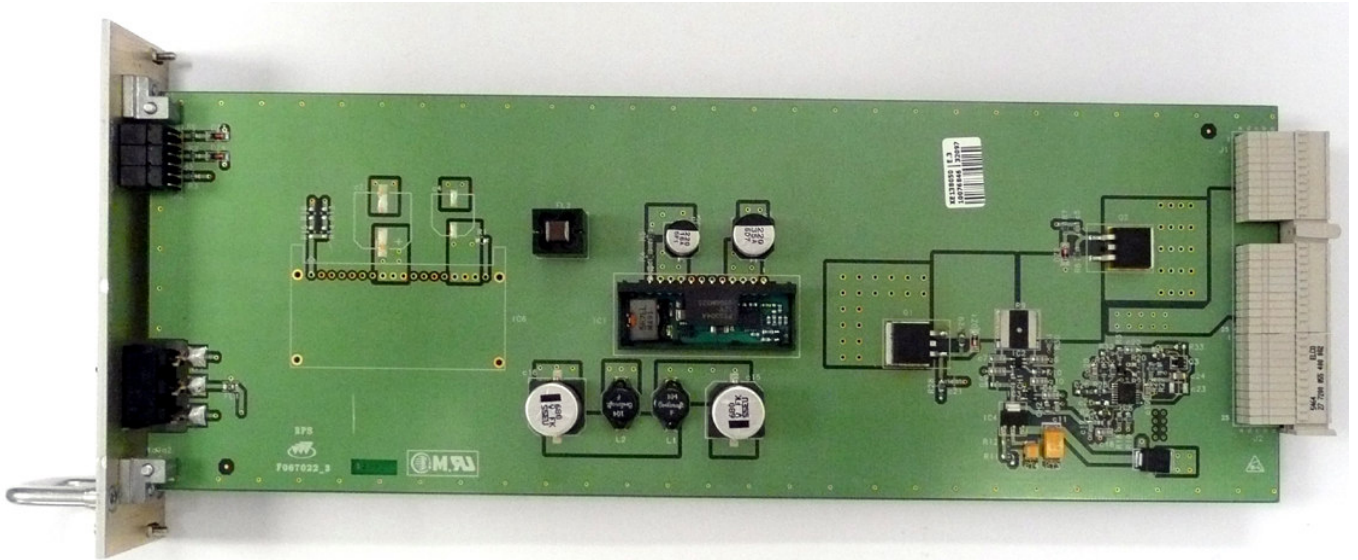
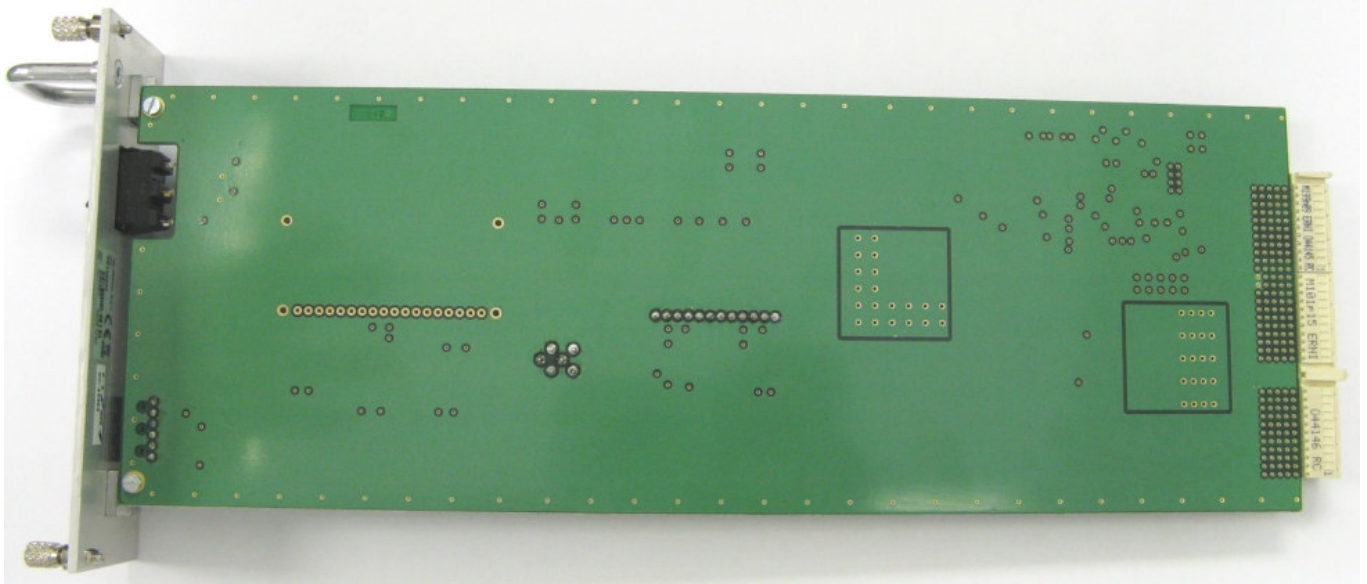
Teltronic and the Teltronic logo are registered trademarks of Teltronic S.A. Unipersonal.

Copyright © Teltronic S.A. Unipersonal. All rights reserved.

CONTENTS:

- 1.1. FRONT PICTURE.....4
- 1.2. RPS PCB TOP LAYER PICTURE5
- 1.3. RPS PCB BOTTOM LAYER PICTURE5

1. RPS**1.1. FRONT PICTURE**

1.2. RPS PCB TOP LAYER PICTURE**1.3. RPS PCB BOTTOM LAYER PICTURE**



DOSSIER RTX RF Unit

PRODUCT: RTX P25

CODE: B800014_FDS

VERSION: 01

REVISION: 00

DATE: 16/04/09

CLASSIFICATION:

General information

Internal document

DOCUMENT MAINTENANCE

THIS DOCUMENT HAS 7 PAGES

EDIT.	DATE	AUTHOR	DESCRIPTION
1.0	16/04/09	A. Narvaiza	Pictures of RTX P25

DOCUMENT APPROVAL

ACTIVITY	NAME	DATE	SIGNATURE
Prepared			
Revised Project Manager			
Approved R&D Director			

 teltronic	DOSSIER RTX P25 RF UNIT	Code: DOSSIER_RTX_P25_ RF_Unit.doc	
		Date: 16/104/09	Page: 2 of 7

Disclaimer

Although every reasonable effort has been made to ensure the accuracy of the information contained herein and any other referred document, this should not be construed as a commitment on the part of Teltronic S.A. Unipersonal, and the liability of Teltronic S.A. Unipersonal for any errors and omissions shall be limited to the correction of such errors and omissions. Teltronic S.A. Unipersonal welcomes any comment as a way to improve any delivered documentation.

The information contained herein has been prepared for the use of appropriately trained personnel, and it is intended for the purpose of the agreement under which the information is submitted. Any party using or relying upon this information assumes full responsibility for such use and in no event shall Teltronic S.A. Unipersonal be liable to anyone for especial, collateral, incidental, or consequential damages in connection with or arising out of the use of this information.

The information or statements given in these documents regarding the suitability, capacity or performance of the mentioned hardware or software products cannot be considered binding but shall be defined in the agreement made between Teltronic S.A. Unipersonal and the customer.

Teltronic S.A. Unipersonal reserves the right to revise these documents and to make changes to its content at any time, without prior notification.

Copyrights

No part of the information contained herein and the other referred documents may be copied, distributed or transmitted by any means to any other party without prior written permission of Teltronic S.A. Unipersonal. The distribution of this document may be also covered by NDA (non-disclosure agreement) between Teltronic S.A. Unipersonal and the receiver.

Please also note that part of these contents even may be covered by patent rights.

This document, the referred documents and the described product are considered protected by copyright according to the applicable laws.

Teltronic and the Teltronic logo are registered trademarks of Teltronic S.A. Unipersonal.

Copyright © Teltronic S.A. Unipersonal. All rights reserved.



**DOSSIER RTX P25
RF UNIT**

Code: DOSSIER_RTX_P25_
RF_Unit.doc

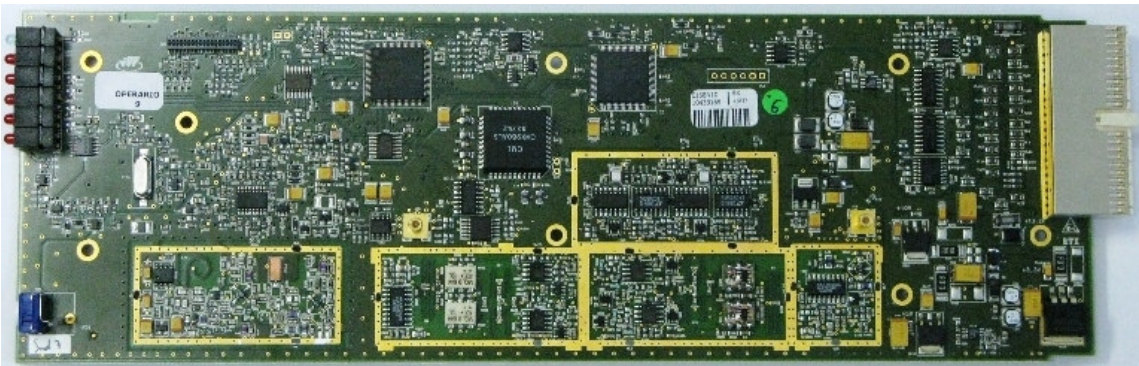
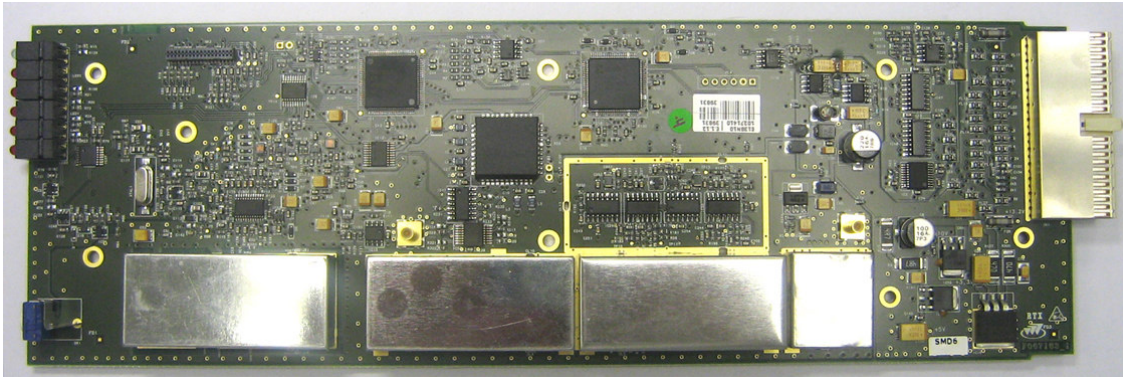
Date: 16/104/09

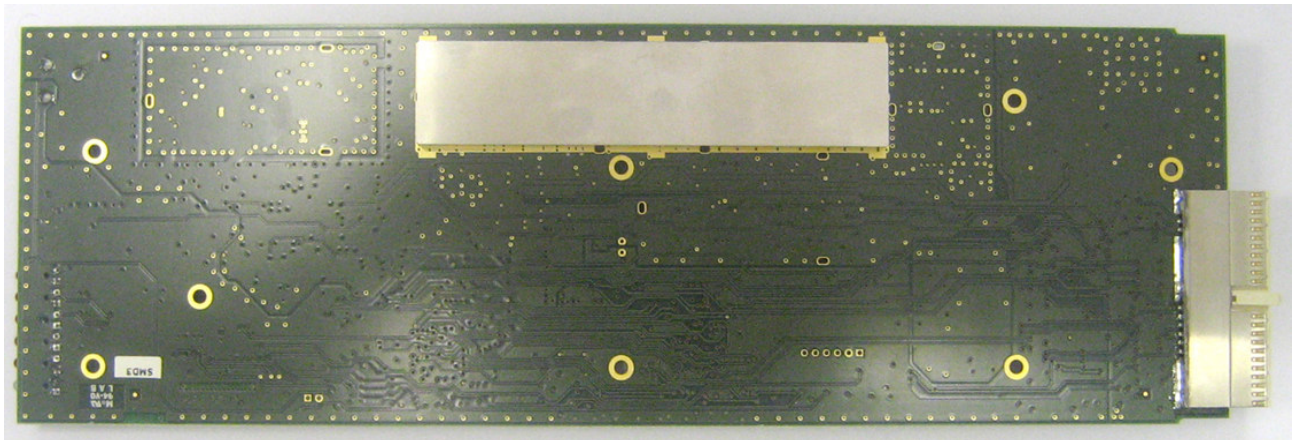
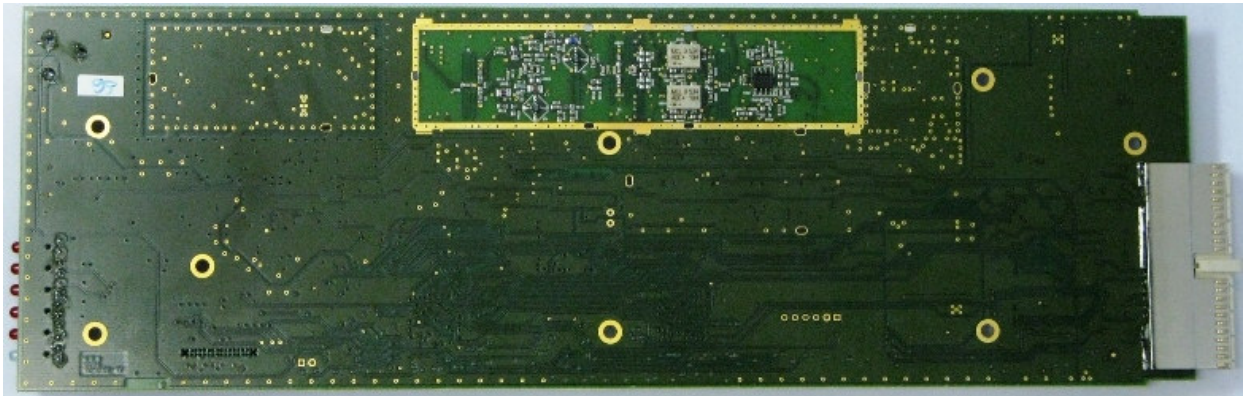
Page: 3 of 7

CONTENTS:

1.	RTX P25	4
1.1.	FRONT PICTURE.....	4
1.2.	RTX PCB TOP LAYER PICTURE	5
1.3.	RTX PCB BOTTOM LAYER PICTURE	6
1.4.	GENERAL PICTURES	7

1. RTX P25**1.1. FRONT PICTURE**

1.2. RTX PCB TOP LAYER PICTURE

1.3. RTX PCB BOTTOM LAYER PICTURE

1.4. GENERAL PICTURES