

## SAR EVALUATION REPORT

For



**Teltronic S.A.U.**

Poligono Malpica C/F-Oeste,  
Zaragoza, 50057, Spain

**FCC ID: WT7PTRKTHTT500800**

**IC: 8624A-PTHTT800**

**Model: HTT-500 806-870MHz**

<b>Report Type:</b> Original Report	<b>Product Type:</b> Portable Radio
<b>Test Engineer:</b> <u>Quinn Jiang</u>	
<b>Report Number:</b> <u>R1010252-SAR</u>	
<b>Report Date:</b> <u>2010-11-17</u>	
<b>Reviewed By:</b> <u>RF Lead</u>	<u>Victor Zhang</u> 
<b>Prepared By:</b> (84)	Bay Area Compliance Laboratories Corp. (BACL) 1274 Anvilwood Avenue, Sunnyvale, CA 94089, USA Tel: (408) 732-9162 Fax: (408) 732 9164

**Note:** This test report is prepared for the customer shown above and for the device described herein. It may not be duplicated or used in part without prior written consent from Bay Area Compliance Laboratories Corp. This report **must not** be used by the customer to claim product certification, approval, or endorsement by NVLAP\*, NIST, or any agency of the Federal Government.

\* This report may contain data that are not covered by the NVLAP accreditation and are marked with an asterisk "\*" (Rev. 2)

<b>SAR Evaluation Results</b>	
Rule Part(s):	CFR 47 §2.1093, IC RSS-102, Issue 4
Test Procedure(s):	FCC OET Bulletin 65 C; IEEE 1528-2003
Exposure Category:	Occupational/Controlled Exposure
Device Type:	Portable Radio
Modulation Type:	$\pi/4$ DQPSK, TDMA 4-slots.
TX Frequency Range:	806-870 MHz
Maximum Conducted Power Tested:	30.23 dBm
Antenna Type(s) Tested:	External Antenna
Body-Worn Accessories:	Belt clip and Remote Speaker Microphone
Face-Head Accessories:	None
Battery Type (s) Tested:	7.4 Vdc Rechargeable Li-Pol Battery
Max. SAR Level(s) Measured:	Body Worn: 0.186 W/kg (1g Body Tissue) Face Hold: 0.735 W/Kg (1g Head Tissue)

This wireless device has been shown to be capable of compliance for localized specific absorption rate (SAR) for General Population/Uncontrolled Exposure limits specified in ANSI/IEEE Standards and has been tested in accordance with the measurement procedures specified in FCC OET 65 Supplement C.

**The results and statements contained in this report pertain only to the device(s) evaluated.**

*Confidentiality*

**EUT Photo**

## TABLE OF CONTENTS

<b>REFERENCE, STANDARDS AND GUIDELINES.....</b>	<b>5</b>
SAR LIMITS .....	6
<b>EUT DESCRIPTION.....</b>	<b>7</b>
<b>FACILITIES AND ACCREDITATION.....</b>	<b>8</b>
<b>DESCRIPTION OF TEST SYSTEM.....</b>	<b>9</b>
MEASUREMENT SYSTEM DIAGRAM.....	11
SYSTEM COMPONENTS .....	12
DASY4 MEASUREMENT SERVER.....	12
DATA ACQUISITION ELECTRONICS.....	13
PROBES .....	13
<b>TESTING EQUIPMENT .....</b>	<b>20</b>
EQUIPMENTS LIST & CALIBRATION INFO .....	20
<b>SAR MEASUREMENT SYSTEM VERIFICATION.....</b>	<b>21</b>
SYSTEM ACCURACY VERIFICATION .....	21
<b>SAR MEASUREMENT RESULTS.....</b>	<b>22</b>
SAR TEST DATA .....	22
<b>APPENDIX A – MEASUREMENT UNCERTAINTY.....</b>	<b>23</b>
<b>APPENDIX B – PROBE CALIBRATION CERTIFICATES.....</b>	<b>24</b>
<b>APPENDIX C – DIPOLE CALIBRATION CERTIFICATES.....</b>	<b>35</b>
<b>APPENDIX D - TEST SYSTEM VERIFICATIONS SCANS .....</b>	<b>45</b>
LIQUID MEASUREMENT RESULT .....	45
<b>APPENDIX E – EUT SCAN RESULTS.....</b>	<b>47</b>
<b>APPENDIX F – OUTPUT POWER MEASUREMENT .....</b>	<b>53</b>
TEST BLOCK DIAGRAM AND PROCEDURE .....	53
TEST EQUIPMENT LISTS AND DETAILS .....	53
TEST RESULTS.....	53
<b>APPENDIX G – TEST SET UP PHOTOS .....</b>	<b>54</b>
BODY WORN - BACK TOUCH TO FLAT PHANTOM .....	54
FACE HELD - 2.5 CM SEPARATION TO FLAT PHANTOM.....	54
RIGHT HEAD TOUCH .....	55
<b>APPENDIX H- EUT PHOTOS .....</b>	<b>57</b>
EUT – FRONT VIEW .....	57
EUT – BACK VIEW .....	57
EUT – SIDE VIEW .....	58
EUT – BATTERY OFF VIEW .....	58
EUT – BATTERY VIEW.....	59
<b>APPENDIX I - INFORMATIVE REFERENCES .....</b>	<b>61</b>

### DOCUMENT REVISION HISTORY

Revision Number	Report Number	Description of Revision	Date of Revision
0	R1010252-SAR	Original Report	2010-11-17

## REFERENCE, STANDARDS AND GUIDELINES

---

### FCC:

The Report and Order requires routine SAR evaluation prior to equipment authorization of portable transmitter devices, including portable telephones. For consumer products, the applicable limit is 1.6 mw/g as recommended by the ANSI/IEEE standard C95.1-1992 [6] for an uncontrolled environment (Paragraph 65). According to the Supplement C of OET Bulletin 65 "Evaluating Compliance with FCC Guide-lines for Human Exposure to Radio frequency Electromagnetic Fields", released on Jun 29, 2001 by the FCC, the device should be evaluated at maximum output power (radiated from the antenna) under "worst-case" conditions for normal or intended use, incorporating normal antenna operating positions, device peak performance frequencies and positions for maximum RF energy coupling.

This report describes the methodology and results of experiments performed on wireless data terminal. The objective was to determine if there is RF radiation and if radiation is found, what is the extent of radiation with respect to safety limits. SAR (Specific Absorption Rate) is the measure of RF exposure determined by the amount of RF energy absorbed by human body (or its parts) – to determine how the RF energy couples to the body or head which is a primary health concern for body worn devices. The limit below which the exposure to RF is considered safe by regulatory bodies in North America is 1.6 mw/g average over 1 gram of tissue mass.

### CE:

The order requires routine SAR evaluation prior to equipment authorization of portable transmitter devices, including portable telephones. For consumer products, the applicable limit is 2 mw/g as recommended by the EN50360 for an uncontrolled environment. According to the Standard, the device should be evaluated at maximum output power (radiated from the antenna) under "worst-case" conditions for normal or intended use, incorporating normal antenna operating positions, device peak performance frequencies and positions for maximum RF energy coupling.

This report describes the methodology and results of experiments performed on wireless data terminal. The objective was to determine if there is RF radiation and if radiation is found, what is the extent of radiation with respect to safety limits. SAR (Specific Absorption Rate) is the measure of RF exposure determined by the amount of RF energy absorbed by human body (or its parts) – to determine how the RF energy couples to the body or head which is a primary health concern for body worn devices. The limit below which the exposure to RF is considered safe by regulatory bodies in Europe is 2 mw/g average over 10 gram of tissue mass.

The test configurations were laid out on a specially designed test fixture to ensure the reproducibility of measurements. Each configuration was scanned for SAR. Analysis of each scan was carried out to characterize the above effects in the device.

There was no SAR of any concern measured on the device for any of the investigated configurations.

**SAR Limits**

## FCC Limit (1g tissue)

EXPOSURE LIMITS	SAR (W/Kg)	
	(General Population / Uncontrolled Exposure Environment)	(Occupational / Controlled Exposure Environment)
Spatial Average (averaged over the whole body)	0.08	0.4
Spatial Peak (averaged over any 1 g of tissue)	1.6	8.0
Spatial Peak (hands/wrists/feet/ankles averaged over 10 g)	4.0	20.0

## CE Limit (10g tissue)

EXPOSURE LIMITS	SAR (W/Kg)	
	(General Population / Uncontrolled Exposure Environment)	(Occupational / Controlled Exposure Environment)
Spatial Average (averaged over the whole body)	0.08	0.4
Spatial Peak (averaged over any 1 g of tissue)	2.0	10
Spatial Peak (hands/wrists/feet/ankles averaged over 10 g)	4.0	20.0

Population/Uncontrolled Environments are defined as locations where there is the exposure of individual who have no knowledge or control of their exposure.

Occupational/Controlled Environments are defined as locations where there is exposure that may be incurred by people who are aware of the potential for exposure (i.e. as a result of employment or occupation).

Occupational/Controlled Environments Spatial Peak limit 8.0 w/kg (FCC) & 10 w/kg (CE) applied to the EUT.

## EUT DESCRIPTION

---

The *Teltronic S.A.U* product, model *HTT-500* or the "EUT" as referred to in this report is a portable radio operates at UHF band.

Items	Technical Specification
Frequency Range	806-870 MHZ
Modulation	$\pi/4$ DQPSK, TDMA 4-slots
Maximum Output Power	30.23 dBm
Dimension	14.5(H) x 6.0(W) x 3.5(D) cm
Weight (with battery)	Approx.396.5g
Operation Mode	Face-Hold Body-worn (With Belt clip and Remote Speaker Microphone)

*\*The data gathered are from a typical production sample provided by the manufacturer, serial number: R1010252-1.*

## **FACILITIES AND ACCREDITATION**

---

The test site used by Bay Area Compliance Laboratories Corp. (BACL) to collect data is located at 1274 Anvilwood Ave, Sunnyvale, California 94089, USA.

BACL is a National Institute of Standards and Technology (NIST) accredited laboratory under the National Voluntary Laboratory Accredited Program (Lab Code 200167-0).



The current scope of accreditations can be found at: <http://ts.nist.gov/ts/htdocs/210/214/scopes/2001670.htm>



## DESCRIPTION OF TEST SYSTEM

These measurements were performed with the automated near-field scanning system DASY4 from Schmid & Partner Engineering AG (SPEAG) which is the fourth generation of the system shown in the figure hereinafter:



The system is based on a high precision robot (working range greater than 0.9m), which positions the probes with a positional repeatability of better than  $\pm 0.02\text{mm}$ . Special E- and H-field probes have been developed for measurements close to material discontinuity, the sensors of which are directly loaded with a Schottky diode and connected via highly resistive lines to the data acquisition unit.

The SAR measurements were conducted with the dosimetric probe ET3DV6 SN: 1604 (manufactured by SPEAG), designed in the classical triangular configuration and optimized for dosimetric evaluation. The probe has been calibrated according to the procedure with accuracy of better than  $\pm 10\%$ . The spherical isotropy was evaluated with the procedure and found to be better than  $\pm 0.25\text{dB}$ .

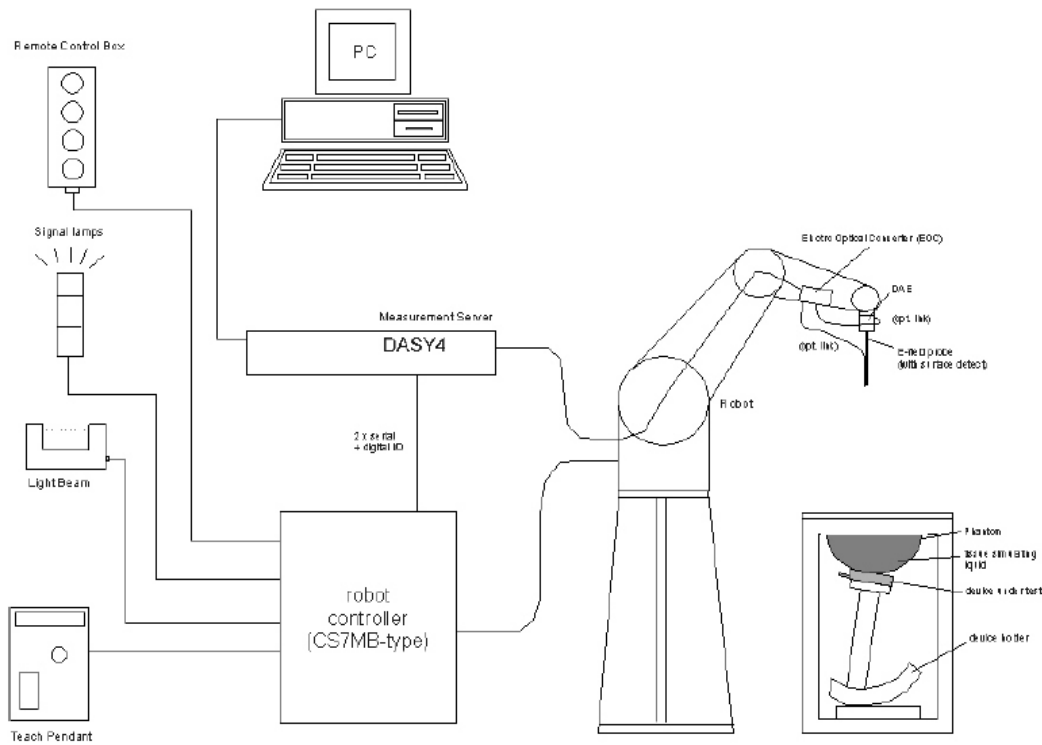
The phantom used was the Generic Twin Phantom. The ear was simulated as a spacer of 4 mm thickness between the earpiece of the phone and the tissue simulating liquid. The Tissue simulation liquid used for each test is in according with the FCC OET65 supplement C as listed below.

Ingredients (% by weight)	Frequency (MHz)									
	450		835		915		1900		2450	
Tissue Type	Head	Body	Head	Body	Head	Body	Head	Body	Head	Body
Water	38.56	51.16	41.45	52.4	41.05	56.0	54.9	40.4	62.7	73.2
Salt (NaCl)	3.95	1.49	1.45	1.4	1.35	0.76	0.18	0.5	0.5	0.04
Sugar	56.32	46.78	56.0	45.0	56.5	41.76	0.0	58.0	0.0	0.0
HEC	0.98	0.52	1.0	1.0	1.0	1.21	0.0	1.0	0.0	0.0
Bactericide	0.19	0.05	0.1	0.1	0.1	0.27	0.0	0.1	0.0	0.0
Triton X-100	0.0	0.0	0.0	0.0	0.0	0.0	0.0	0.0	36.8	0.0
DGBE	0.0	0.0	0.0	0.0	0.0	0.0	44.92	0.0	0.0	26.7
Dielectric Constant	43.42	58.0	42.54	56.1	42.0	56.8	39.9	54.0	39.8	52.5
Conductivity (S/m)	0.85	0.83	0.91	0.95	1.0	1.07	1.42	1.45	1.88	1.78

#### IEEE SCC-34/SC-2 P1528 Recommended Tissue Dielectric Parameters

Frequency (MHz)	Head		Body	
	$\epsilon_r$	$\sigma$ (S/m)	$\epsilon_r$	$\sigma$ (S/m)
150	52.3	0.76	61.9	0.80
300	45.3	0.87	58.2	0.92
450	43.5	0.87	56.7	0.94
835	41.5	0.90	55.2	0.97
900	41.5	0.97	55.0	1.05
915	41.5	0.98	55.0	1.06
1450	40.5	1.20	54.0	1.30
1610	40.3	1.29	53.8	1.40
1800-2000	40.0	1.40	53.3	1.52
2450	39.2	1.80	52.7	1.95
3000	38.5	2.40	52.0	2.73
5800	35.3	5.27	48.2	6.00

## Measurement System Diagram



The DASY4 system for performing compliance tests consists of the following items:

- A standard high precision 6-axis robot (Stäubli RX family) with controller, teach pendant and software. An arm extension for accommodating the data acquisition electronics (DAE).
- A dosimetric probe, i.e., an isotropic E-field probe optimized and calibrated for usage in tissue simulating liquid. The probe is equipped with an optical surface detector system.
- A Data Acquisition Electronics (DAE) which performs the signal amplification, signal multiplexing, AD-conversion, offset measurements, mechanical surface detection, collision detection, etc. The unit is battery powered with standard or rechargeable batteries. The signal is optically transmitted to the EOC.
- The Electro-Optical Converter (EOC) performs the conversion between optical and electrical of the signals for the digital communication to the DAE and for the analog signal from the optical surface detection. The EOC is connected to the measurement server.
- The function of the measurement server is to perform the time critical tasks such as signal filtering, control of the robot operation and fast movement interrupts.
- A probe alignment unit which improves the (absolute) accuracy of the probe positioning.
- A computer operating Windows 2000 or Windows XP.

- DASY4 software.
- Remote control with teach pendant and additional circuitry for robot safety such as warning lamps, etc.
- The SAM twin phantom enabling testing left-hand and right-hand usage.
- The device holder for handheld mobile phones.
- Tissue simulating liquid mixed according to the given recipes.
- Validation dipole kits allowing to validate the proper functioning of the system.

### **System Components**

- DASY4 Measurement Server
- Data Acquisition Electronics
- Probes
- Light Beam Unit
- Medium
- SAM Twin Phantom
- Device Holder for SAM Twin Phantom
- System Validation Kits
- Robot

### **DASY4 Measurement Server**

The DASY4 measurement server is based on a PC/104 CPU board with a 166MHz low-power Pentium, 32MB chip disk and 64MB RAM. The necessary circuits for communication with either the DAE4 (or DAE3) electronic box as well as the 16-bit AD-converter system for optical detection and digital I/O interface are contained on the DASY4 I/O-board, which is directly connected to the PC/104 bus of the CPU board.



The measurement server performs all real-time data evaluation for field measurements and surface detection, controls robot movements and handles safety operation. The PC-operating system cannot interfere with these time critical processes. All connections are supervised by a watchdog, and disconnection of any of the cables to the measurement server will automatically disarm the robot and disable all program-controlled robot movements. Furthermore, the measurement server is equipped with two expansion slots which are reserved for future applications. Please note that the expansion slots do not have a standardized pinout and therefore only the expansion cards provided by SPEAG can be inserted. Expansion cards from any other supplier could seriously damage the measurement server.

## Data Acquisition Electronics

The data acquisition electronics DAE3 consists of a highly sensitive electrometer grade preamplifier with auto-zeroing, a channel and gain-switching multiplexer, a fast 16 bit AD-converter and a command decoder and control logic unit. Transmission to the measurement server is accomplished through an optical downlink for data and status information as well as an optical uplink for commands and the clock.



## Probes

The DASY system can support many different probe types.

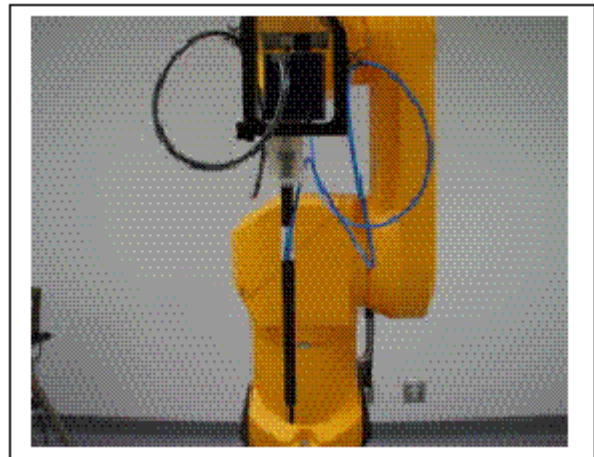
**Dosimetric Probes:** These probes are specially designed and calibrated for use in liquids with high permittivities. They should not be used in air, since the spherical isotropy in air is poor ( $\pm 2$  dB). The dosimetric probes have special calibrations in various liquids at different frequencies.

**Free Space Probes:** These are electric and magnetic field probes specially designed for measurements in free space. The z-sensor is aligned to the probe axis and the rotation angle of the x-sensor is specified. This allows the DASY system to automatically align the probe to the measurement grid for field component measurement. The free space probes are generally not calibrated in liquid. (The H-field probes can be used in liquids without any change of parameters.)

**Temperature Probes:** Small and sensitive temperature probes for general use. They use a completely different parameter set and different evaluation procedures. Temperature rise features allow direct SAR evaluations with these probes.

### ET3DV6 Probe Specification

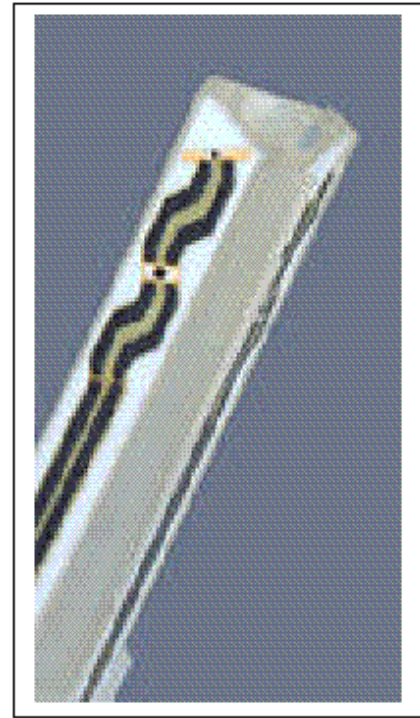
Construction Symmetrical design with triangular core  
 Built-in optical fiber for surface detection System  
 Built-in shielding against static charges  
 Calibration In air from 10 MHz to 2.5 GHz  
 In brain and muscle simulating tissue at  
 Frequencies of 450 MHz, 900 MHz and  
 1.8 GHz (accuracy  $\pm 8\%$ )  
 Frequency 10 MHz to  $> 6$  GHz; Linearity:  $\pm 0.2$  dB  
 (30 MHz to 3 GHz)  
 Directivity  $\pm 0.2$  dB in brain tissue (rotation around  
 probe axis)  
 $\pm 0.4$  dB in brain tissue (rotation normal probe axis)  
 Dynamic 5 mw/g to  $> 100$  mw/g;  
 Range Linearity:  $\pm 0.2$  dB  
 Surface  $\pm 0.2$  mm repeatability in air and clear liquids  
 Detection over diffuse reflecting surfaces.  
 Dimensions Overall length: 330 mm  
 Tip length: 16 mm



**Photograph of the probe**

Body diameter: 12 mm  
 Tip diameter: 6.8 mm  
 Distance from probe tip to dipole centers: 2.7 mm  
 Application General dosimetric up to 3 GHz  
 Compliance tests of mobile phones  
 Fast automatic scanning in arbitrary phantoms

The SAR measurements were conducted with the dosimetric probe ET3DV6 designed in the classical triangular configuration and optimized for dosimetric evaluation. The probe is constructed using the thick film technique; with printed resistive lines on ceramic substrates. The probe is equipped with an optical multi-fiber line ending at the front of the probe tip. It is connected to the EOC box on the robot arm and provides an automatic detection of the phantom surface. Half of the fibers are connected to a pulsed infrared transmitter, the other half to a synchronized receiver. As the probe approaches the surface, the reflection from the surface produces a coupling from the transmitting to the receiving fibers. This reflection increases first during the approach, reaches maximum and then decreases. If the probe is flatly touching the surface, the coupling is zero. The distance of the coupling maximum to the surface is independent of the surface reflectivity and largely independent of the surface to probe angle. The DASY3 software reads the reflection during a software approach and looks for the maximum using a 2nd order fitting. The approach is stopped when reaching the maximum.



**Inside view of  
 ET3DV6 E-field Probe**

### E-Field Probe Calibration Process

Each probe is calibrated according to a dosimetric assessment procedure described in [6] with accuracy better than  $\pm 10\%$ . The spherical isotropy was evaluated with the procedure described in [7] and found to be better than  $\pm 0.25\text{dB}$ . The sensitivity parameters (NormX, NormY, NormZ), the diode compression parameter (DCP) and the conversion factor (ConvF) of the probe are tested.

The free space E-field from amplified probe outputs is determined in a test chamber. This is performed in a TEM cell for frequencies below 1 GHz, and in a waveguide above 1 GHz for free space. For the free space calibration, the probe is placed in the volumetric center of the cavity and at the proper orientation with the field. The probe is then rotated 360 degrees.

E-field temperature correlation calibration is performed in a flat phantom filled with the appropriate simulated brain tissue. The measured free space E-field in the medium correlates to temperature rise in dielectric medium. For temperature correlation calibration a RF transparent thermistor-based temperature probe is used in conjunction with the E-field probe.

### Data Evaluation

The DASY4 post-processing software (SEMCAD) automatically executes the following procedures to calculate the field units from the microvolt readings at the probe connector. The parameters used in the evaluation are stored in the configuration modules of the software:

Probe parameters: - Sensitivity	Normi, ai0, ai1, ai2
- Conversion factor	ConvFi
- Diode compression point	dcpi

Device parameters: - Frequency	f
- Crest factor	cf
Media parameters: - Conductivity	$\sigma$
- Density	$\rho$

These parameters must be set correctly in the software. They can be found in the component documents or they can be imported into the software from the configuration files issued for the DASY components. In the direct measuring mode of the multi-meter option, the parameters of the actual system setup are used. In the scan visualization and export modes, the parameters stored in the corresponding document files are used.

The first step of the evaluation is a linearization of the filtered input signal to account for the compression characteristics of the detector diode. The compensation depends on the input signal, the diode type and the DC-transmission factor from the diode to the evaluation electronics. If the exciting field is pulsed, the crest factor of the signal must be known to correctly compensate for peak power. The formula for each channel can be given as:

$$V_i = U_i + U_i^2 \cdot \frac{cf}{dcp_i}$$

With  $V_i$  = compensated signal of channel i (i=x, y, z)  
 $U_i$  = input signal of channel i (i=x, y, z)  
 cf = crest factor of exciting field (DASY parameter)  
 $dcp_i$  = diode compression point (DASY parameter)

From the compensated input signals the primary field data for each channel can be evaluated:

$$\begin{aligned} \text{E - fieldprobes : } \quad E_i &= \sqrt{\frac{V_i}{\text{Norm}_i \cdot \text{ConvF}}} \\ \text{H - fieldprobes : } \quad H_i &= \sqrt{V_i} \cdot \frac{a_{i0} + a_{i1}f + a_{i2}f^2}{f} \end{aligned}$$

With  $V_i$  = compensated signal of channel i (i=x, y, z)  
 $\text{Norm}_i$  = sensor sensitivity of channel i (i=x, y, z)  
 $\mu\text{V}/(\text{V/m})^2$  for E-field probes  
 ConvF = sensitivity enhancement in solution  
 $a_{ij}$  = sensor sensitivity factors for H-field probes  
 f = carrier frequency [GHz]  
 $E_i$  = electric field strength of channel i in V/m  
 $H_i$  = diode compression point (DASY parameter)

The RSS value of the field components gives the total field strength (Hermitian magnitude):

$$E_{tot} = \sqrt{E_x^2 + E_y^2 + E_z^2}$$

The primary field data are used to calculate the derived field units.

$$SAR = E_{tot}^2 \cdot \frac{\sigma}{\rho \cdot 1'000}$$

With SAR = local specific absorption rate in mW/g  
 $E_{\text{tot}}$  = total field strength in V/m  
 $\sigma$  = conductivity in [mho/m] or [Siemens/m]  
 $\rho$  = equivalent tissue density in g/cm<sup>3</sup>

Note that the density is normally set to 1, to account for actual brain density rather than the density of the simulation liquid.

## Light Beam Unit

The light beam switch allows automatic "tooling" of the probe. During the process, the actual position of the probe tip with respect to the robot arm is measured, as well as the probe length and the horizontal probe offset. The software then corrects all movements, so that the robot coordinates are valid for the probe tip. The repeatability of this process is better than 0.1 mm. If a position has been taught with an aligned probe, the same position will be reached with another aligned probe within 0.1 mm, even if the other probe has different dimensions. During probe rotations, the probe tip will keep its actual position.

## Medium

### Parameters

The parameters of the tissue simulating liquid strongly influence the SAR in the liquid. The parameters for the different frequencies are defined in the corresponding compliance standards (e.g., EN 50361, IEEE 1528-2003).

### Parameter measurements

Several measurement systems are available for measuring the dielectric parameters of liquids:

- The open coax test method (e.g., HP85070 dielectric probe kit) is easy to use, but has only moderate accuracy. It is calibrated with open, short, and deionized water and the calibrations a critical process.
- The transmission line method (e.g., model 1500T from DAMASKOS, INC.) measures the transmission and reflection in a liquid filled high precision line. It needs standard two port calibration and is probably more accurate than the open coax method.
- The reflection line method measures the reflection in a liquid filled shorted precision lined, the method is not suitable for these liquids because of its low sensitivity.
- The slotted line method scans the field magnitude and phase along a liquid filled line. The evaluation is straight forward and only needs a simple response calibration. The method is very accurate, but can only be used in high loss liquids and at frequencies above 100 to 200MHz. Cleaning the line can be tedious.



## SAM Twin Phantom

The SAM twin phantom is a fiberglass shell phantom with 2mm shell thickness (except the ear region where shell thickness increases to 6mm). It has three measurement areas:

- Left hand
- Right hand
- Flat phantom

The phantom table comes in two sizes: A 100 x 50 x 85 cm (L x W x H) table for use with free standing robots (DASY4 professional system option) or as a second phantom and a 100 x 75 x 85 cm(L x W x H) table with reinforcements for table mounted robots (DASY4 compact system option) .

The bottom plate contains three pair of bolts for locking the device holder. The device holder positions are adjusted to the standard measurement positions in the three sections. Only one device holder is necessary if two phantoms are used (e.g., for different liquids) A white cover is provided to tap the phantom during o\_-periods to prevent water evaporation and changes in the liquid parameters. Free space scans of devices on the cover are possible. On the phantom top, three reference markers are provided to identify the phantom position with respect to the robot.

The phantom can be used with the following tissue simulating liquids:

- Water-sugar based liquids can be left permanently in the phantom. Always cover the liquid if the system is not used, otherwise the parameters will change due to water evaporation.
- Glycol based liquids should be used with care. As glycol is a softener for most plastics, the liquid should be taken out of the phantom and the phantom should be dried when the system is not used (desirable at least once a week).
- Do not use other organic solvents without previously testing the phantom resistiveness.



### Device Holder for SAM Twin Phantom

The SAR in the phantom is approximately inversely proportional to the square of the distance between the source and the liquid surface. For a source in 5mm distance, a positioning uncertainty of  $\pm 0.5\text{mm}$  would produce a SAR uncertainty of  $\pm 20\%$ . An accurate device positioning is therefore crucial for accurate and repeatable measurements. The positions, in which the devices must be measured, are defined by the standards.

The DASY device holder is designed to cope with different positions given in the standard. It has two scales for the device rotation (with respect to the body axis) and the device inclination (with respect to the line between the ear reference points). The rotation centers for both scales are the ear reference point (ERP). Thus the device needs no repositioning when changing the angles.



The DASY device holder has been made out of low-loss POM material having the following dielectric parameters: relative permittivity  $\epsilon_r=3$  and loss tangent  $\tan \delta=0.02$ . The amount of dielectric material has been reduced in the closest vicinity of the device, since measurements have suggested that the influence of the clamp on the test results could thus be lowered.

### System Validation Kits

Each DASY system is equipped with one or more system validation kits. These units, together with the predefined measurement procedures within the DASY software, enable the user to conduct the system performance check and system validation. For that purpose a well defined SAR distribution in the flat section of the SAM twin phantom is produced.

System validation kit includes a dipole, tripod holder to fix it underneath the flat phantom and a corresponding distance holder. Dipoles are available for the variety of frequencies between 300MHz and 6 GHz (dipoles for other frequencies or media and other calibration conditions are available upon request).

The dipoles are highly symmetric and matched at the center frequency for the specified liquid and distance to the flat phantom (or flat section of the SAM-twin phantom). The accurate distance between the liquid surface and the dipole center is achieved with a distance holder that snaps on the dipole.

## Robot

The DASY4 system uses the high precision industrial robots RX60L, RX90 and RX90L, as well as the RX60BL and RX90BL types out of the newer series from Stäubli SA (France). The RX robot series offers many features that are important for our application:

- High precision (repeatability 0.02mm)
- High reliability (industrial design)
- Low maintenance costs (virtually maintenance-free due to direct drive gears; no belt drives)
- Jerk-free straight movements (brushless synchrony motors; no stepper motors)
- Low ELF interference (the closed metallic construction shields against motor control fields)

For the newly delivered DASY4 systems as well as for the older DASY3 systems delivered since 1999, the CS7MB robot controller version from Stäubli is used. Previously delivered systems have either a CS7 or CS7M controller; the differences to the CS7MB are mainly in the hardware, but some procedures in the robot software from Stäubli are also not completely the same. The following descriptions about robot hard- and software correspond to CS7MB controller with software version 13.1 (edit S5). The actual commands, procedures and configurations, also including details in hardware, might differ if an older robot controller is in use. In this case please also refer to the Stäubli manuals for further information.



## TESTING EQUIPMENT

### Equipments List & Calibration Info

Type / Model	Calibration Due Date	S/N
DASY4 Professional Dissymmetric System	N/A	N/A
Robot RX60L	N/A	CS7MBSP / 467
Robot Controller	N/A	F01/5J72A1/A/01
Dell Computer Dimension 3000	N/A	N/A
SPEAG EDC3	N/A	N/A
SPEAG DAE3	2010-11-22	456
DASY4 Measurement Server	N/A	1176
SPEAG E-Field Probe ET3DV6	2011-09-16	1604
Antenna, Dipole, ALS-D-835-S-2	2011-11-05	210-00564
SPEAG Generic Twin Phantom	N/A	N/A
Brain Equivalent Matter (835 MHz)	Each Time	N/A
Muscle Equivalent Matter (835 MHz)	Each Time	N/A
Agilent, Spectrum Analyzer E4446A	2011-08-18	US44300386
Microwave Amp. 8349A	N/A	2644A02662
Power Meter Agilent E4419B	2011-09-01	MY4121511
Power Sensor Agilent E9301A	2011-02-19	US39211706
Agilent E5515C	2011-04-23	GB44051221
Dielectric Probe Kit HP85070A	N/A	US99360201
Agilent, Signal Generator, 8648C	2011-02-25	3847M00143
Amplifier, ST181-20	N/A	E012-0101
Antenna, Horn SAS-200/571	2011-04-20	A052704

# SAR MEASUREMENT SYSTEM VERIFICATION

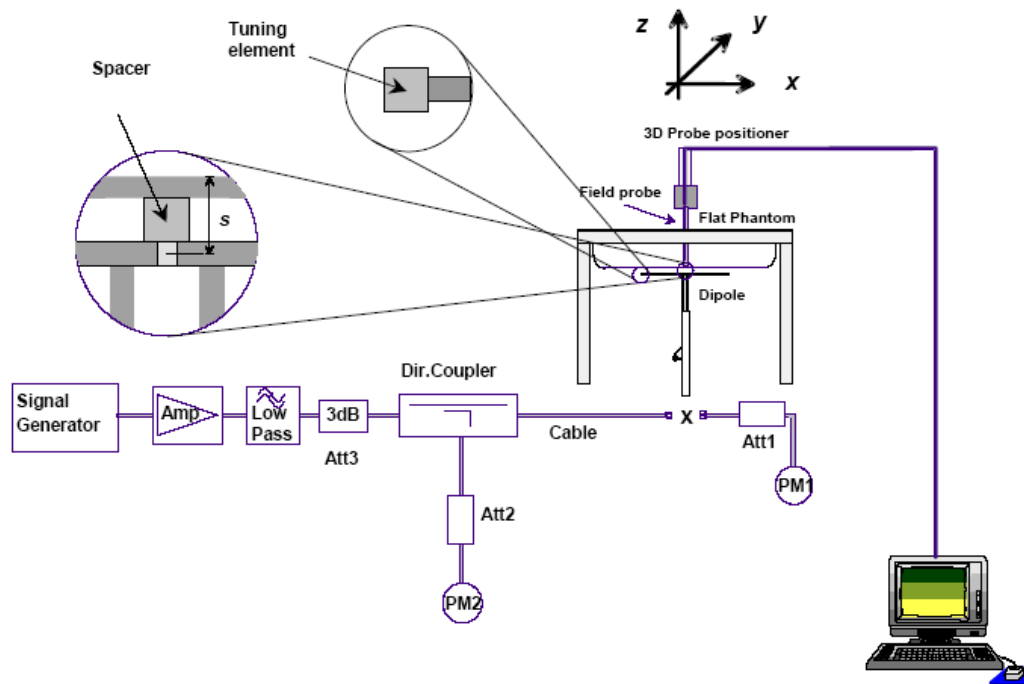
## System Accuracy Verification

Prior to the assessment, the system validation kit was used to test whether the system was operating within its specifications of  $\pm 10\%$ . The validation results are tabulated below. And also the corresponding SAR plot is attached as well in the SAR plots files.

### IEEE P1528 recommended reference value for Head

Frequency (MHz)	1 g SAR	10 g SAR	Local SAR at surface (above feed point)	Local SAR at surface (v=2cm offset from feed point)
300	3.0	2.0	4.4	2.1
450	4.9	3.3	7.2	3.2
835	9.5	6.2	14.1	4.9
900	10.8	6.9	16.4	5.4
1450	29.0	16.0	50.2	6.5
1800	38.1	19.8	69.5	6.8
1900	39.7	20.5	72.1	6.6
2000	41.1	21.1	74.6	6.5
2450	52.4	24.0	104.2	7.7
3000	63.8	25.7	140.2	9.5

## System Setup Block Diagram



## SAR MEASUREMENT RESULTS

This page summarizes the results of the performed dosimetric evaluation. The plots with the corresponding SAR distributions, which reveal information about the location of the maximum SAR with respect to the device, could be found in Appendix E.

### SAR Test Data

#### Test Environmental Conditions

<b>Temperature:</b>	20° C - 22° C
<b>Relative Humidity:</b>	55% - 60° C
<b>ATM Pressure:</b>	101.4 kPa

\* Testing was performed by Quinn Jiang from 2010-11-08 to 2010-11-09 in SAR chamber.

Test Position	Accessory	Frequency (MHz)	Liquid Type	Phantom Type	1 g SAR (W/Kg) Value	FCC Limit (W/Kg)	Ref. Plot
Body Worn	Belt clip and Remote Speaker Microphone	851.1	Body	Flat	0.186	8.0	1
2.5 cm Face up	None	851.1	Head	Flat	0.335	8.0	2
Right Head Touch	None	851.1	Head	Right Head	0.556	8.0	3
Right Head Tilt	None	851.1	Head	Right Head	0.402	8.0	4
Left Head Touch	None	851.1	Head	Left Head	0.534	8.0	5
Left Head Tilt	None	851.1	Head	Left Head	0.735	8.0	6

Note:

“TETRA access scheme is TDMA with 4 physical channels per carrier. The channel bandwidth is 25 kHz. As a result, the equipment meets a spectrum efficiency standard of one voice channel per 6.25 kHz of channel bandwidth. Modulation is  $\pi/4$ -DQPSK with 18Ksym/sec. This modulation is based on transmitting two bits per symbol, so the data rate on each sub-carrier is 9000 bits/sec (higher than 4800 bits per second per 6.25 kHz of channel bandwidth).”

## APPENDIX A – MEASUREMENT UNCERTAINTY

The uncertainty budget has been determined for the DASY4 measurement system and is given in the following Table.

DASY4 Uncertainty Budget According to IEEE 1528								
Error Description	Uncertainty Value	Prob. Dist.	Div.	(c i) 1g	(c i) 10g	Std. Unc. (1g)	Std. Unc. (10g)	(v i) veff
<b>Measurement System</b>								
Probe Calibration	± 5.9%	N	1	1	1	± 5.9%	± 5.9%	∞
Axial Isotropy	± 4.7%	R	$\sqrt{3}$	0.7	0.7	± 1.9%	± 1.9%	∞
Hemispherical Isotropy	± 9.6%	R	$\sqrt{3}$	0.7	0.7	± 3.9%	± 3.9%	∞
Boundary Effects	± 1.0%	R	$\sqrt{3}$	1	1	± 0.6%	± 0.6%	∞
Linearity	± 4.7%	R	$\sqrt{3}$	1	1	± 2.7%	± 2.7%	∞
System Detection Limits	± 1.0%	R	$\sqrt{3}$	1	1	± 0.6%	± 0.6%	∞
Readout Electronics	± 0.3%	N	1	1	1	± 0.3%	± 0.3%	∞
Response Time	± 0.8%	R	$\sqrt{3}$	1	1	± 0.5%	± 0.5%	∞
Integration Time	± 2.6%	R	$\sqrt{3}$	1	1	± 1.5%	± 1.5%	∞
RF Ambient Conditions	± 3.0%	R	$\sqrt{3}$	1	1	± 1.7%	± 1.7%	∞
Probe Positioner	± 0.4%	R	$\sqrt{3}$	1	1	± 0.2%	± 0.2%	∞
Probe Positioning	± 2.9%	R	$\sqrt{3}$	1	1	± 1.7%	± 1.7%	∞
Max. SAR Eval.	± 1.0%	R	$\sqrt{3}$	1	1	± 0.6%	± 0.6%	∞
<b>Test Sample Related</b>								
Device Positioning	± 2.9%	N	1	1	1	± 2.9%	± 2.9%	145
Device Holder	± 3.6%	N	1	1	1	± 3.6%	± 2.6%	5
Power Drift	± 5.0%	R		1	1	± 2.9%	± 2.9%	∞
<b>Phantom and Setup</b>								
Phantom Uncertainty	± 4.0%	R	$\sqrt{3}$	1	1	± 2.3%	± 2.3%	∞
Liquid Conductivity (Target)	± 5.0%	R	$\sqrt{3}$	0.64	0.43	± 1.8%	± 1.2%	∞
Liquid Conductivity (meas.)	± 2.5%	N	1	0.64	0.43	± 1.6%	± 1.1%	∞
Liquid Permittivity (Target)	± 5.0%	R	$\sqrt{3}$	0.6	0.49	± 1.7%	± 1.4%	∞
Liquid Permittivity (Target)	± 2.5%	N	1	0.6	0.49	± 1.5%	± 1%	∞
Combined Std. Uncertainty						± 10.8%	± 10.6%	330
Expanded STD Uncertainty						± 21.6%	± 21.1%	

# APPENDIX B – PROBE CALIBRATION CERTIFICATES

**Calibration Laboratory of  
Schmid & Partner  
Engineering AG**  
Zeughausstrasse 43, 8004 Zurich, Switzerland



**S** Schweizerischer Kalibrierdienst  
**C** Service suisse d'étalonnage  
**S** Servizio svizzero di taratura  
**S** Swiss Calibration Service

Accredited by the Swiss Accreditation Service (SAS)  
The Swiss Accreditation Service is one of the signatories to the EA  
Multilateral Agreement for the recognition of calibration certificates

Accreditation No.: **SCS 108**

Client **BACL**

Certificate No: **ET3-1604\_Sep10**

## CALIBRATION CERTIFICATE

Object: **ET3DV6 - SN:1604**

Calibration procedure(s): **QA CAL-01.v6, QA CAL-12.v6, QA CAL-23.v3 and QA CAL-25.v2  
Calibration procedure for dosimetric E-field probes**

Calibration date: **September 16, 2010**

This calibration certificate documents the traceability to national standards, which realize the physical units of measurements (SI).  
The measurements and the uncertainties with confidence probability are given on the following pages and are part of the certificate.

All calibrations have been conducted in the closed laboratory facility: environment temperature (22 ± 3)°C and humidity < 70%.

Calibration Equipment used (M&TE critical for calibration)

Primary Standards	ID #	Cal Date (Certificate No.)	Scheduled Calibration
Power meter E4419B	GB41293874	1-Apr-10 (No. 217-01136)	Apr-11
Power sensor E4412A	MY41495277	1-Apr-10 (No. 217-01136)	Apr-11
Power sensor E4412A	MY41498087	1-Apr-10 (No. 217-01136)	Apr-11
Reference 3 dB Attenuator	SN: S5054 (3c)	30-Mar-10 (No. 217-01159)	Mar-11
Reference 20 dB Attenuator	SN: S5086 (20b)	30-Mar-10 (No. 217-01161)	Mar-11
Reference 30 dB Attenuator	SN: S5129 (30b)	30-Mar-10 (No. 217-01160)	Mar-11
Reference Probe ES3DV2	SN: 3013	30-Dec-09 (No. ES3-3013_Dec09)	Dec-10
DAE4	SN: 660	20-Apr-10 (No. DAE4-660_Apr10)	Apr-11
Secondary Standards	ID #	Check Date (in house)	Scheduled Check
RF generator HP 8648C	US3642U01700	4-Aug-99 (in house check Oct-09)	In house check: Oct-11
Network Analyzer HP 8753E	US37390585	18-Oct-01 (in house check Oct-09)	In house check: Oct10

Calibrated by:	Name <b>Jeton Kastrati</b>	Function <b>Laboratory Technician</b>	Signature 
Approved by:	Name <b>Katja Pokovic</b>	Function <b>Technical Manager</b>	

Issued: September 16, 2010

This calibration certificate shall not be reproduced except in full without written approval of the laboratory.

Certificate No: ET3-1604\_Sep10

Page 1 of 11

*verified ok [Signature] 9/24/2010*



**Calibration Laboratory of  
Schmid & Partner  
Engineering AG**  
Zeughausstrasse 43, 8004 Zurich, Switzerland



**S** Schweizerischer Kalibrierdienst  
**C** Service suisse d'étalonnage  
**S** Servizio svizzero di taratura  
**S** Swiss Calibration Service

Accredited by the Swiss Accreditation Service (SAS)  
The Swiss Accreditation Service is one of the signatories to the EA  
Multilateral Agreement for the recognition of calibration certificates

Accreditation No.: **SCS 108**

### Glossary:

TSL	tissue simulating liquid
NORM <sub>x,y,z</sub>	sensitivity in free space
ConvF	sensitivity in TSL / NORM <sub>x,y,z</sub>
DCP	diode compression point
CF	crest factor (1/duty_cycle) of the RF signal
A, B, C	modulation dependent linearization parameters
Polarization $\phi$	$\phi$ rotation around probe axis
Polarization $\vartheta$	$\vartheta$ rotation around an axis that is in the plane normal to probe axis (at measurement center), i.e., $\vartheta = 0$ is normal to probe axis

### Calibration is Performed According to the Following Standards:

- IEEE Std 1528-2003, "IEEE Recommended Practice for Determining the Peak Spatial-Averaged Specific Absorption Rate (SAR) in the Human Head from Wireless Communications Devices: Measurement Techniques", December 2003
- IEC 62209-1, "Procedure to measure the Specific Absorption Rate (SAR) for hand-held devices used in close proximity to the ear (frequency range of 300 MHz to 3 GHz)", February 2005

### Methods Applied and Interpretation of Parameters:

- NORM<sub>x,y,z</sub>**: Assessed for E-field polarization  $\vartheta = 0$  ( $f \leq 900$  MHz in TEM-cell;  $f > 1800$  MHz: R22 waveguide). NORM<sub>x,y,z</sub> are only intermediate values, i.e., the uncertainties of NORM<sub>x,y,z</sub> does not effect the E<sup>2</sup>-field uncertainty inside TSL (see below *ConvF*).
- NORM(*f*)<sub>x,y,z</sub> = NORM<sub>x,y,z</sub> \* frequency\_response** (see Frequency Response Chart). This linearization is implemented in DASY4 software versions later than 4.2. The uncertainty of the frequency response is included in the stated uncertainty of *ConvF*.
- DCP<sub>x,y,z</sub>**: DCP are numerical linearization parameters assessed based on the data of power sweep with CW signal (no uncertainty required). DCP does not depend on frequency nor media.
- A<sub>x,y,z</sub>; B<sub>x,y,z</sub>; C<sub>x,y,z</sub>; VR<sub>x,y,z</sub>**: A, B, C are numerical linearization parameters assessed based on the data of power sweep for specific modulation signal. The parameters do not depend on frequency nor media. VR is the maximum calibration range expressed in RMS voltage across the diode.
- ConvF and Boundary Effect Parameters**: Assessed in flat phantom using E-field (or Temperature Transfer Standard for  $f \leq 800$  MHz) and inside waveguide using analytical field distributions based on power measurements for  $f > 800$  MHz. The same setups are used for assessment of the parameters applied for boundary compensation (alpha, depth) of which typical uncertainty values are given. These parameters are used in DASY4 software to improve probe accuracy close to the boundary. The sensitivity in TSL corresponds to NORM<sub>x,y,z</sub> \* ConvF whereby the uncertainty corresponds to that given for ConvF. A frequency dependent ConvF is used in DASY version 4.4 and higher which allows extending the validity from  $\pm 50$  MHz to  $\pm 100$  MHz.
- Spherical isotropy (3D deviation from isotropy)**: in a field of low gradients realized using a flat phantom exposed by a patch antenna.
- Sensor Offset**: The sensor offset corresponds to the offset of virtual measurement center from the probe tip (on probe axis). No tolerance required.

**ET3DV6 SN:1604**

**September 16, 2010**

# Probe ET3DV6

## SN:1604

Manufactured:	July 30, 2001
Last calibrated:	September 23, 2008
Recalibrated:	September 16, 2010

**Calibrated for DASY/EASY Systems**

(Note: non-compatible with DASY2 system!)

ET3DV6 SN:1604

September 16, 2010

**DASY/EASY - Parameters of Probe: ET3DV6 SN:1604****Basic Calibration Parameters**

	Sensor X	Sensor Y	Sensor Z	Unc (k=2)
Norm ( $\mu\text{V}/(\text{V}/\text{m})^2$ ) <sup>A</sup>	1.93	1.86	1.92	± 10.1%
DCP (mV) <sup>B</sup>	91.4	91.1	91.5	

**Modulation Calibration Parameters**

UID	Communication System Name	PAR		A dB	B dBuV	C	VR mV	Unc <sup>E</sup> (k=2)
10000	CW	0.00	X	0.00	0.00	1.00	300.0	± 1.5%
			Y	0.00	0.00	1.00	300.0	
			Z	0.00	0.00	1.00	300.0	

The reported uncertainty of measurement is stated as the standard uncertainty of measurement multiplied by the coverage factor k=2, which for a normal distribution corresponds to a coverage probability of approximately 95%.

<sup>A</sup> The uncertainties of NormX,Y,Z do not affect the E<sup>2</sup>-field uncertainty inside TSL (see Pages 5 and 6).

<sup>B</sup> Numerical linearization parameter: uncertainty not required.

<sup>E</sup> Uncertainty is determined using the maximum deviation from linear response applying rectangular distribution and is expressed for the square of the field value.

ET3DV6 SN:1604

September 16, 2010

**DASY/EASY - Parameters of Probe: ET3DV6 SN:1604****Calibration Parameter Determined in Head Tissue Simulating Media**

<b>f [MHz]</b>	<b>Validity [MHz]<sup>c</sup></b>	<b>Permittivity</b>	<b>Conductivity</b>	<b>ConvF X</b>	<b>ConvF Y</b>	<b>ConvF Z</b>	<b>Alpha</b>	<b>Depth Unc (k=2)</b>
450	± 50 / ± 100	43.5 ± 5%	0.87 ± 5%	7.32	7.32	7.32	0.20	2.22 ± 13.3%
835	± 50 / ± 100	41.5 ± 5%	0.90 ± 5%	6.26	6.26	6.26	0.43	2.21 ± 11.0%
900	± 50 / ± 100	41.5 ± 5%	0.97 ± 5%	6.12	6.12	6.12	0.34	2.66 ± 11.0%
1810	± 50 / ± 100	40.0 ± 5%	1.40 ± 5%	5.14	5.14	5.14	0.60	2.51 ± 11.0%
1900	± 50 / ± 100	40.0 ± 5%	1.40 ± 5%	5.04	5.04	5.04	0.69	2.17 ± 11.0%
2450	± 50 / ± 100	39.2 ± 5%	1.80 ± 5%	4.33	4.33	4.33	0.99	1.63 ± 11.0%

<sup>c</sup> The validity of ± 100 MHz only applies for DASY v4.4 and higher (see Page 2). The uncertainty is the RSS of the ConvF uncertainty at calibration frequency and the uncertainty for the indicated frequency band.

ET3DV6 SN:1604

September 16, 2010

**DASY/EASY - Parameters of Probe: ET3DV6 SN:1604****Calibration Parameter Determined in Body Tissue Simulating Media**

<b>f [MHz]</b>	<b>Validity [MHz]<sup>c</sup></b>	<b>Permittivity</b>	<b>Conductivity</b>	<b>ConvF X</b>	<b>ConvF Y</b>	<b>ConvF Z</b>	<b>Alpha</b>	<b>Depth Unc (k=2)</b>
450	± 50 / ± 100	56.7 ± 5%	0.94 ± 5%	7.72	7.72	7.72	0.13	2.30 ± 13.3%
835	± 50 / ± 100	55.2 ± 5%	0.97 ± 5%	6.10	6.10	6.10	0.31	2.92 ± 11.0%
900	± 50 / ± 100	55.0 ± 5%	1.05 ± 5%	6.09	6.09	6.09	0.28	3.23 ± 11.0%
1810	± 50 / ± 100	53.3 ± 5%	1.52 ± 5%	4.61	4.61	4.61	0.75	2.61 ± 11.0%
1900	± 50 / ± 100	53.3 ± 5%	1.52 ± 5%	4.44	4.44	4.44	0.88	2.41 ± 11.0%
2450	± 50 / ± 100	52.7 ± 5%	1.95 ± 5%	4.06	4.06	4.06	0.99	1.32 ± 11.0%

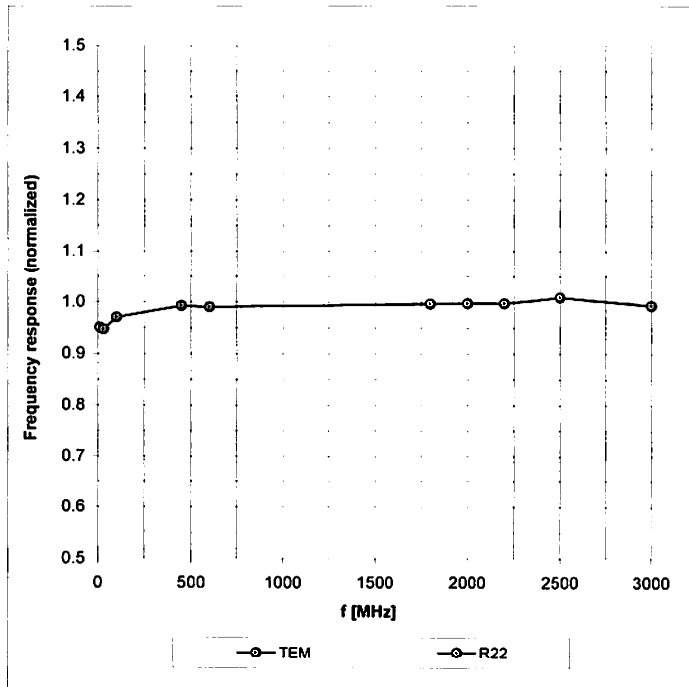
<sup>c</sup> The validity of ± 100 MHz only applies for DASY v4.4 and higher (see Page 2). The uncertainty is the RSS of the ConvF uncertainty at calibration frequency and the uncertainty for the indicated frequency band.

ET3DV6 SN:1604

September 16, 2010

### Frequency Response of E-Field

(TEM-Cell: ifi110 EXX, Waveguide: R22)

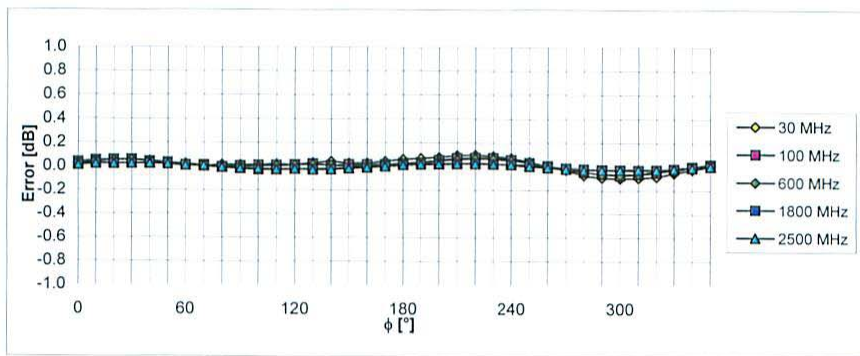
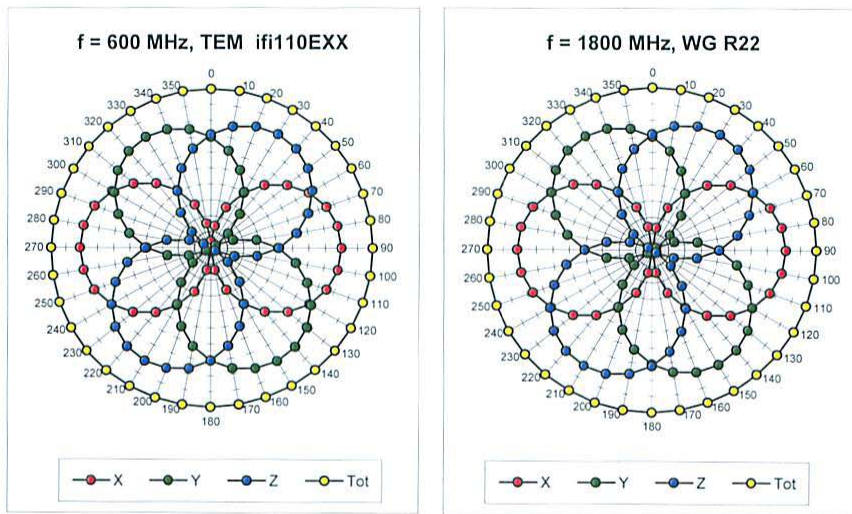


Uncertainty of Frequency Response of E-field:  $\pm 6.3\%$  (k=2)

ET3DV6 SN:1604

September 16, 2010

### Receiving Pattern ( $\phi$ ), $\vartheta = 0^\circ$

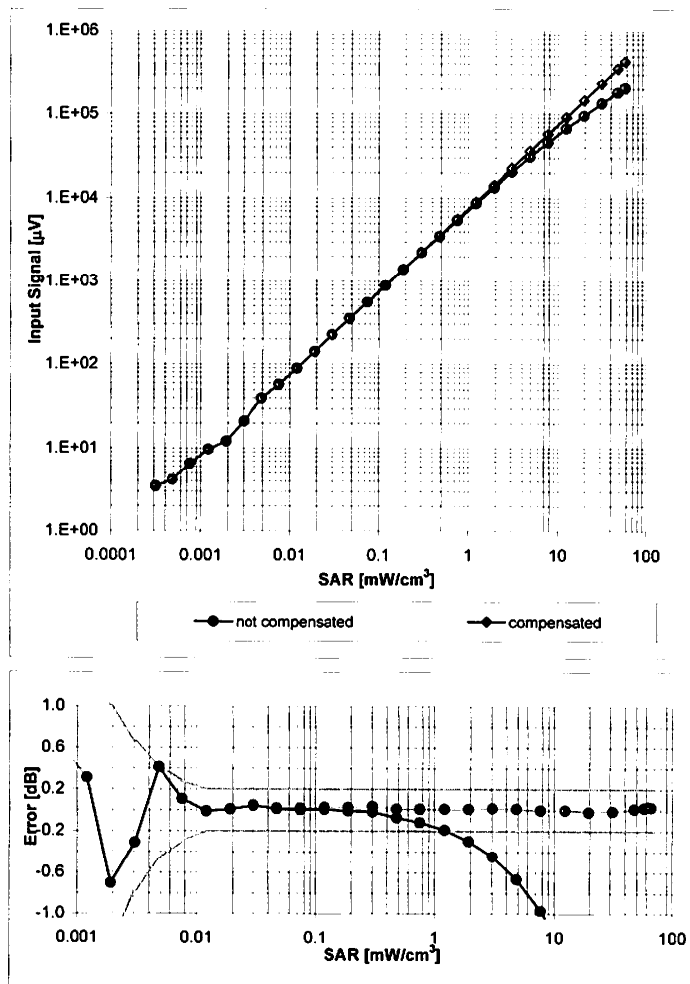


Uncertainty of Axial Isotropy Assessment:  $\pm 0.5\%$  (k=2)

ET3DV6 SN:1604

September 16, 2010

### Dynamic Range f(SAR<sub>head</sub>) (Waveguide R22, f = 1800 MHz)



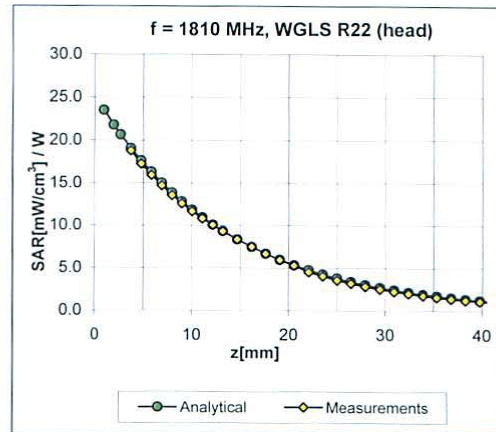
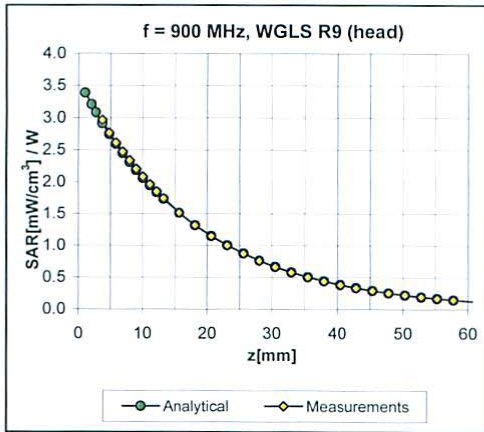
Uncertainty of Linearity Assessment: ± 0.6% (k=2)



ET3DV6 SN:1604

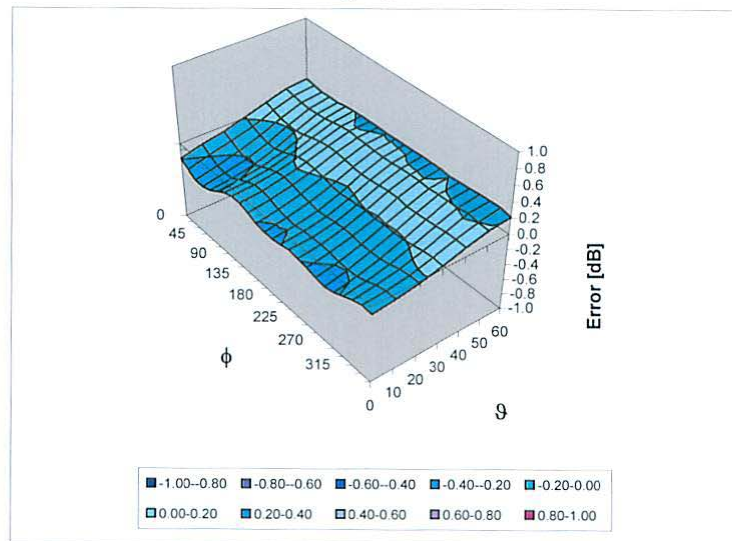
September 16, 2010

### Conversion Factor Assessment



### Deviation from Isotropy in HSL

Error ( $\phi, \vartheta$ ), f = 900 MHz



Uncertainty of Spherical Isotropy Assessment:  $\pm 2.6\%$  (k=2)

ET3DV6 SN:1604

September 16, 2010

**Other Probe Parameters**

Sensor Arrangement	Triangular
Connector Angle (°)	Not applicable
Mechanical Surface Detection Mode	enabled
Optical Surface Detection Mode	enabled
Probe Overall Length	337 mm
Probe Body Diameter	10 mm
Tip Length	10 mm
Tip Diameter	6.8 mm
Probe Tip to Sensor X Calibration Point	2.7 mm
Probe Tip to Sensor Y Calibration Point	2.7 mm
Probe Tip to Sensor Z Calibration Point	2.7 mm
Recommended Measurement Distance from Surface	4 mm

# APPENDIX C – DIPOLE CALIBRATION CERTIFICATES

## NCL CALIBRATION LABORATORIES

Calibration File No: DC-1176  
Project Number: BACB-5547

### CERTIFICATE OF CALIBRATION

It is certified that the equipment identified below has been calibrated in the NCL CALIBRATION LABORATORIES by qualified personnel following recognized procedures and using transfer standards traceable to NRC/NIST.

Validation Dipole

Manufacturer: APREL Laboratories  
Part number: ALS-D-835-S-2  
Frequency: 835 MHz  
Serial No: 210-00564

Customer: Bay Area Compliance Laboratory

Calibrated: 4<sup>th</sup> November 2010  
Released on: 5<sup>th</sup> November 2010

This Calibration Certificate is incomplete unless accompanied with the Calibration Results Summary

Released By: \_\_\_\_\_

### **NCL** CALIBRATION LABORATORIES

51 SPECTRUM WAY  
NEPEAN, ONTARIO  
CANADA K2R 1E6

Division of APREL Lab.  
TEL: (513) 820-4888  
FAX: (513) 820-4162

**NCL Calibration Laboratories**

Division of APREL Laboratories.

---

**Conditions**

Dipole 210-00564 was new and taken from stock prior to calibration.

**Ambient Temperature of the Laboratory:** 22 °C +/- 0.5°C

**Temperature of the Tissue:** 21 °C +/- 0.5°C

We the undersigned attest that to the best of our knowledge the calibration of this device has been accurately conducted and that all information contained within this report has been reviewed for accuracy.



-----  
Stuart Nicol



-----  
C. Teodorian

This page has been reviewed for content and attested to by signature within this document.

**NCL Calibration Laboratories**

Division of APREL Laboratories.

**Calibration Results Summary**

The following results relate the Calibrated Dipole and should be used as a quick reference for the user.

**Mechanical Dimensions**

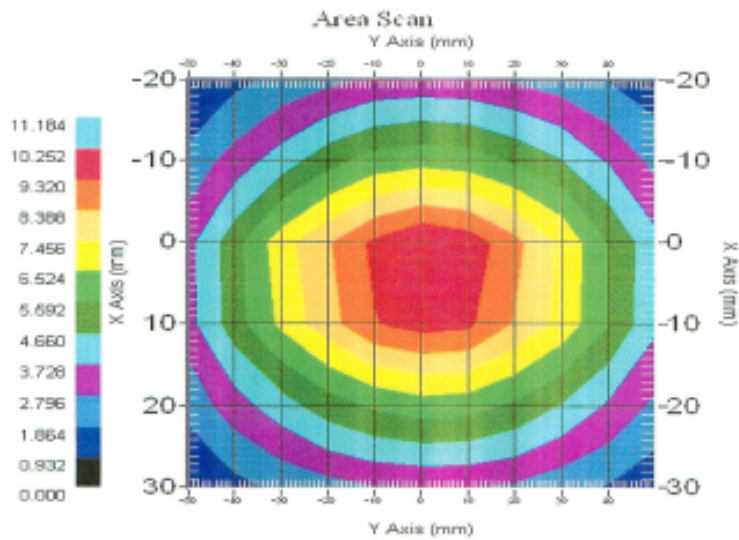
**Length:** 162.2 mm  
**Height:** 89.4 mm

**Electrical Specification**

**SWR:** 1.085 U  
**Return Loss:** -29.149 dB  
**Impedance:** 50.605 Ω

**System Validation Results**

Frequency	1 Gram	10 Gram	Peak
835 MHz	9.51	6.15	14.19



This page has been reviewed for content and attested to by signature within this document.

**NCL Calibration Laboratories**

Division of APREL Laboratories.

**Introduction**

This Calibration Report has been produced in line with the SSI Dipole Calibration Procedure SSI-TP-018-ALSAS. The results contained within this report are for Validation Dipole 210-00564. The calibration routine consisted of a three-step process. Step 1 was a mechanical verification of the dipole to ensure that it meets the mechanical specifications. Step 2 was an Electrical Calibration for the Validation Dipole, where the SWR, Impedance, and the Return loss were assessed. Step 3 involved a System Validation using the ALSAS-10U, along with APREL E-020 130 MHz to 26 GHz E-Field Probe Serial Number 212.

**References**

SSI-TP-018-ALSAS Dipole Calibration Procedure  
SSI-TP-016 Tissue Calibration Procedure  
IEEE 1528 "Recommended Practice for Determining the Peak Spatial-Average Specific Absorption Rate (SAR) in the Human Body Due to Wireless Communications Devices: Experimental Techniques"

**Conditions**

Dipole 210-00564 was new taken from stock.

**Ambient Temperature of the Laboratory:** 22 °C +/- 0.5°C  
**Temperature of the Tissue:** 20 °C +/- 0.5°C

This page has been reviewed for content and attested to by signature within this document.

4

**NCL Calibration Laboratories**

Division of APREL Laboratories.

**Dipole Calibration Results****Mechanical Verification**

APREL Length	APREL Height	Measured Length	Measured Height
161.0 mm	89.8 mm	162.2 mm	89.4 mm

**Tissue Validation**

Head Tissue 835MHz	Measured
Dielectric constant, $\epsilon_r$	41.10
Conductivity, $\sigma$ [S/m]	0.91

This page has been reviewed for content and attested to by signature within this document.

5

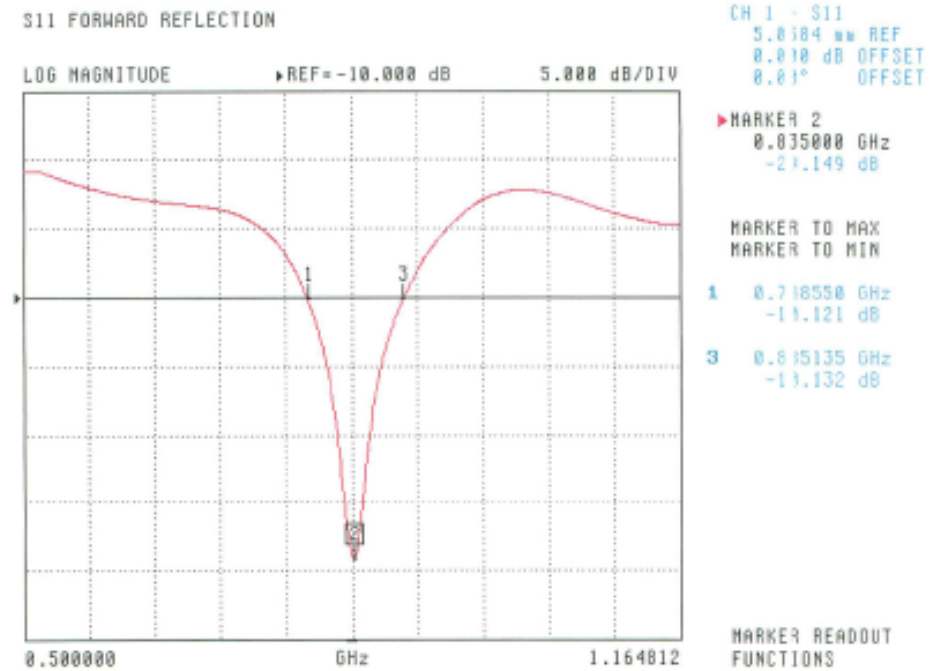
**NCL Calibration Laboratories**  
Division of APREL Laboratories.

**Electrical Calibration**

Test	Result
S11 RL	-29.149 dB
SWR	1.085 U
Impedance	50.605 Ω

The Following Graphs are the results as displayed on the Vector Network Analyzer.

**S11 Parameter Return Loss**



This page has been reviewed for content and attested to by signature within this document.

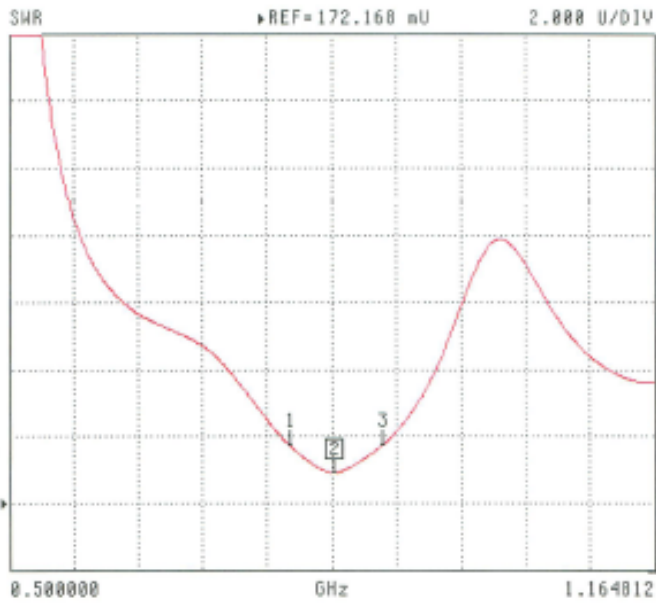


**NCL Calibration Laboratories**

Division of APREL Laboratories.

**SWR**

S11 FORWARD REFLECTION



CH 1 - S11  
5.0384 MHz REF  
0.030 dB OFFSET  
0.01° OFFSET

▶ MARKER 2  
0.835000 GHz  
1.085 U

MARKER TO MAX  
MARKER TO MIN

1 0.718550 GHz  
1.932 U

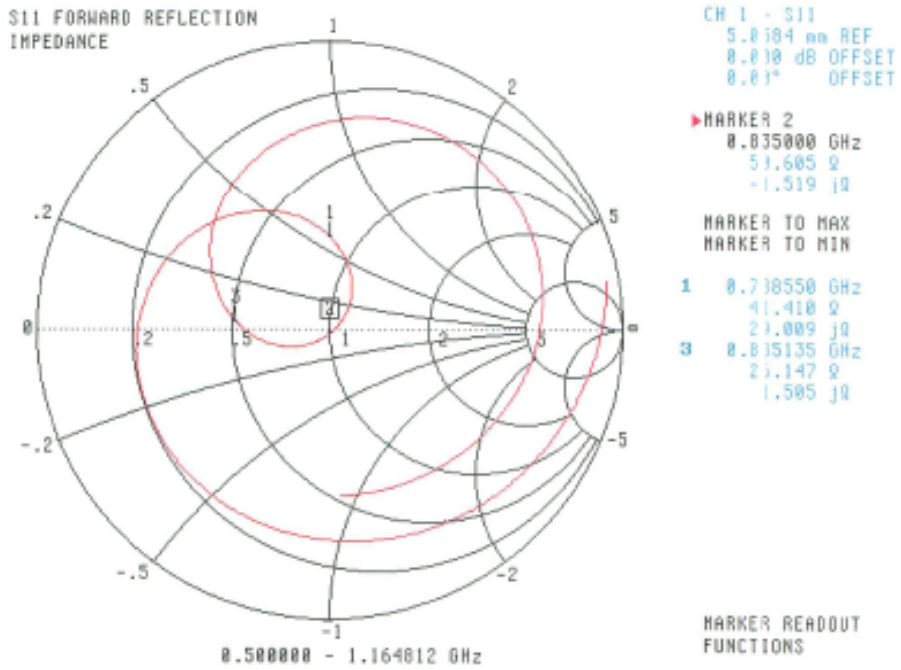
3 0.835135 GHz  
1.924 U

MARKER READOUT  
FUNCTIONS

This page has been reviewed for content and attested to by signature within this document.

**NCL Calibration Laboratories**  
Division of APREL Laboratories.

### Smith Chart Dipole Impedance



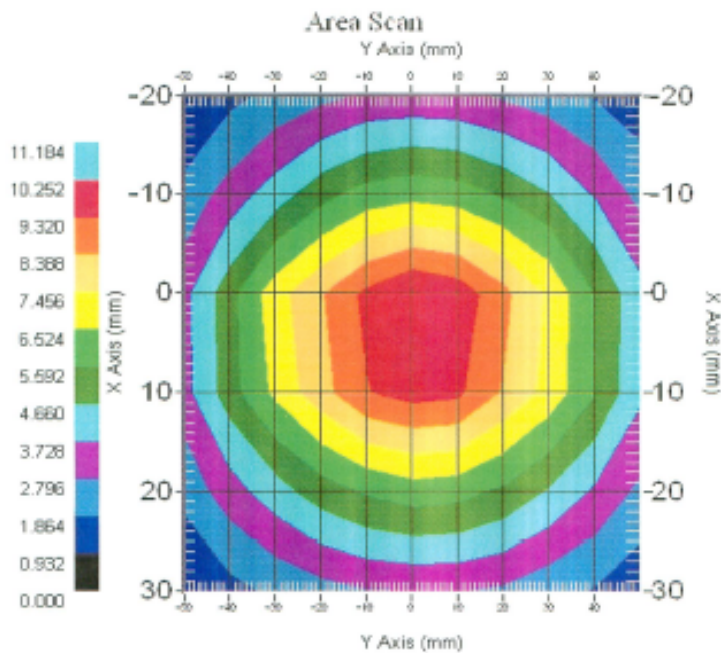
This page has been reviewed for content and attested to by signature within this document.

**NCL Calibration Laboratories**

Division of APREL Laboratories.

**System Validation Results Using the Electrically Calibrated Dipole**

Head Tissue Frequency	1 Gram	10 Gram	Peak Above Feed Point
835 MHz	9.51	6.15	14.19



This page has been reviewed for content and attested to by signature within this document.

**NCL Calibration Laboratories**

Division of APREL Laboratories.

**Test Equipment**

The test equipment used during Probe Calibration, manufacturer, model number and, current calibration status are listed and located on the main APREL server R:\NCL\Calibration Equipment\Instrument List 2010.

This page has been reviewed for content and attested to by signature within this document.

10

## APPENDIX D - TEST SYSTEM VERIFICATIONS SCANS

### Liquid Measurement Result

Testing was performed by Quinn Jiang on 2010-11-08

Simulant	Freq. [MHz]	Parameters	Liquid Temp [°C]	Target Value	Measured Value	Deviation [%]	Limits [%]
Head	835	$\epsilon_r$	22	41.5	41.5	0	$\pm 5$
		$\sigma$	22	0.90	0.89	-1.1	$\pm 5$
		lg SAR	22	9.5	9.3	-2.11	$\pm 10$

$\epsilon_r$  = relative permittivity,  $\sigma$  = conductivity and  $\rho=1000$  kg/m<sup>3</sup>

**Test Laboratory: Bay Area Compliance Lab Corp. (BACL)****System Performance Test (835 MHz Head Tissue)****Dipole 835 MHz; Type: ALS-D-835-S-2; Serial: SN: 210-00564**

Communication System: CW; Frequency: 835 MHz; Duty Cycle: 1:1

Medium parameters used:  $f = 835$  MHz;  $\sigma = 0.89$  mho/m;  $\epsilon_r = 41.5$ ;  $\rho = 1000$  kg/m<sup>3</sup>

Phantom section: Flat Section

## DASY4 Configuration:

- Probe: ET3DV6 - SN1604; ConvF(6.26, 6.26, 6.26); Calibrated: 9/16/2010
- Sensor-Surface: 4mm (Mechanical Surface Detection)
- Electronics: DAE3 Sn456; Calibrated: 11/8/2007
- Phantom: SAM with CRP; Type: Twin SAM; Serial: TP-1032
- Measurement SW: DASY4, V4.6 Build 23; Post processing SW: SEMCAD, V1.8 Build 184

**d =15 mm, Pin = 0.5 W/Area Scan (81x121x1):** Measurement grid: dx=15mm, dy=15mm

Maximum value of SAR (interpolated) = 5.02 mW/g

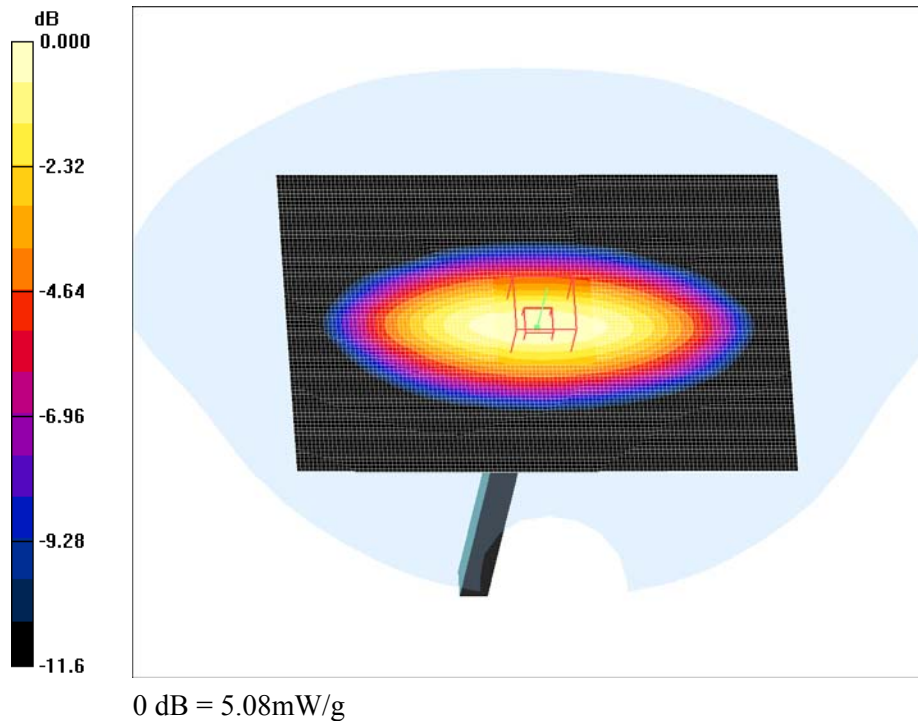
**d =15 mm, Pin = 0.5 W/Zoom Scan (8x8x7)/Cube 0:** Measurement grid: dx=5mm, dy=5mm, dz=5mm

Reference Value = 78.3 V/m; Power Drift = -0.044 dB

Peak SAR (extrapolated) = 7.21 W/kg

**SAR (1 g) = 4.65 mW/g; SAR (10 g) = 2.95 mW/g**

Maximum value of SAR (measured) = 5.08 mW/g

**835 MHz System Validation**

## APPENDIX E – EUT SCAN RESULTS

### Test Laboratory: Bay Area Compliance Lab Corp. (BACL)

#### Body Worn to Flat Phantom with Belt clip and Remote Speaker Microphone (Low Channel)

Teltronic S.A.U; Type: HTT-500; Serial: R1010252-1

Communication System: Low Channel; Frequency: 851.1 MHz; Duty Cycle: 1:4  
 Medium parameters used (interpolated):  $f = 851.1$  MHz;  $\sigma = 0.971$  mho/m;  $\epsilon_r = 55.7$ ;  $\rho = 1000$  kg/m<sup>3</sup>  
 Phantom section: Flat Section

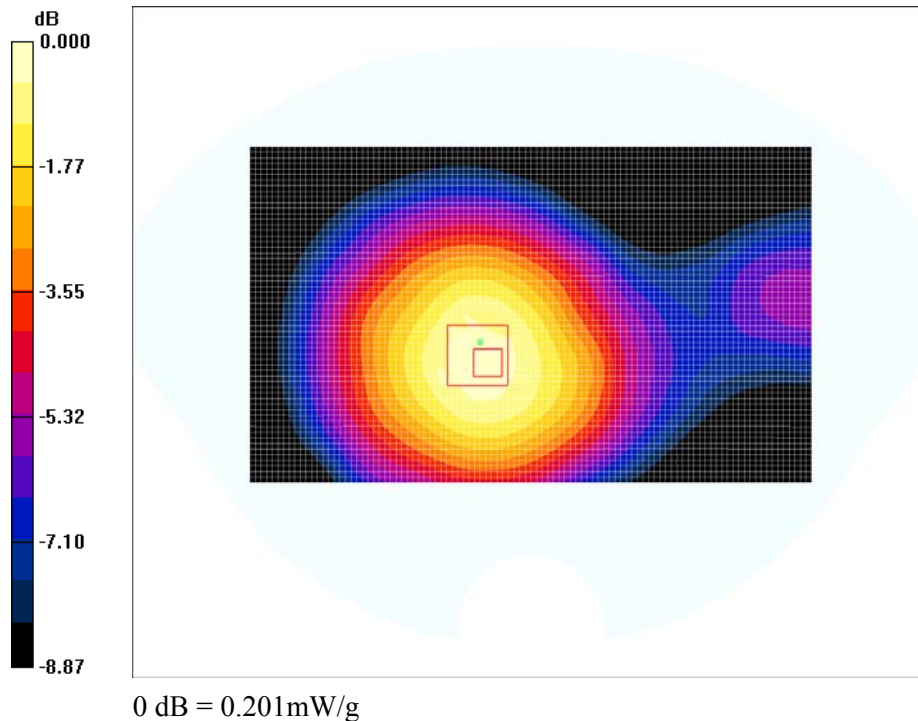
DASY4 Configuration:

- Probe: ET3DV6 - SN1604; ConvF(6.1, 6.1, 6.1); Calibrated: 9/16/2010
- Sensor-Surface: 4mm (Mechanical Surface Detection)
- Electronics: DAE3 Sn456; Calibrated: 11/8/2007
- Phantom: SAM with CRP; Type: Twin SAM; Serial: TP-1032
- Measurement SW: DASY4, V4.6 Build 23; Post processing SW: SEMCAD, V1.8 Build 184

**Body Worn to Flat Phantom with Clip /Area Scan (61x101x1):** Measurement grid: dx=20mm, dy=20mm  
 Maximum value of SAR (interpolated) = 0.190 mW/g

**Body Worn to Flat Phantom with Clip /Zoom Scan (7x7x7)/Cube 0:** Measurement grid: dx=5mm, dy=5mm, dz=5mm  
 Reference Value = 14.1 V/m; Power Drift = -0.170 dB  
 Peak SAR (extrapolated) = 0.263 W/kg

**SAR (1 g) = 0.186 mW/g; SAR (10 g) = 0.138 mW/g**  
 Maximum value of SAR (measured) = 0.201 mW/g



# 1

**Test Laboratory: Bay Area Compliance Lab Corp. (BACL)****2.5 cm Face Up to Flat Phantom (Low Channel)****Teltronic S.A.U; Type: HTT-500; Serial: R1010252-1**

Communication System: Low Channel; Frequency: 851.1 MHz; Duty Cycle: 1:4  
Medium parameters used (interpolated):  $f = 851.1$  MHz;  $\sigma = 0.971$  mho/m;  $\epsilon_r = 55.7$ ;  $\rho = 1000$  kg/m<sup>3</sup>  
Phantom section: Flat Section

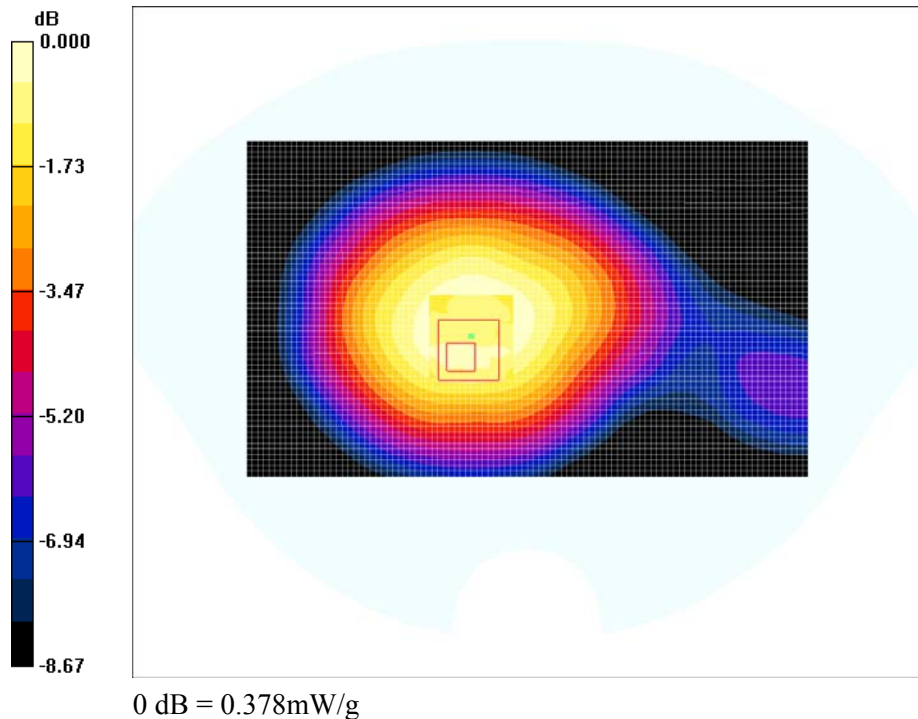
DASY4 Configuration:

- Probe: ET3DV6 - SN1604; ConvF(6.1, 6.1, 6.1); Calibrated: 9/16/2010
- Sensor-Surface: 4mm (Mechanical Surface Detection)
- Electronics: DAE3 Sn456; Calibrated: 11/8/2007
- Phantom: SAM with CRP; Type: Twin SAM; Serial: TP-1032
- Measurement SW: DASY4, V4.6 Build 23; Post processing SW: SEMCAD, V1.8 Build 184

**2.5 cm Face Up to Flat Phantom /Area Scan (61x101x1):** Measurement grid: dx=20mm, dy=20mm  
Maximum value of SAR (interpolated) = 0.386 mW/g

**2.5 cm Face Up to Flat Phantom /Zoom Scan (7x7x7)/Cube 0:** Measurement grid: dx=5mm, dy=5mm, dz=5mm  
Reference Value = 16.3 V/m; Power Drift = -0.043 dB  
Peak SAR (extrapolated) = 0.466 W/kg

**SAR (1 g) = 0.335 mW/g; SAR (10 g) = 0.236 mW/g**  
Maximum value of SAR (measured) = 0.378 mW/g



# 2



**Test Laboratory: Bay Area Compliance Lab Corp. (BACL)****Right Head Touch (Low Channel)****Teltronic S.A.U; Type: HTT-500; Serial: R1010252-1**

Communication System: Low Channel; Frequency: 851.1 MHz; Duty Cycle: 1:4

Medium parameters used (interpolated):  $f = 851.1$  MHz;  $\sigma = 0.901$  mho/m;  $\epsilon_r = 41.3$ ;  $\rho = 1000$  kg/m<sup>3</sup>

Phantom section: Right Section

DASY4 Configuration:

- Probe: ET3DV6 - SN1604; ConvF(6.26, 6.26, 6.26); Calibrated: 9/16/2010
- Sensor-Surface: 4mm (Mechanical Surface Detection)
- Electronics: DAE3 Sn456; Calibrated: 11/8/2007
- Phantom: SAM with CRP; Type: Twin SAM; Serial: TP-1032
- Measurement SW: DASY4, V4.6 Build 23; Post processing SW: SEMCAD, V1.8 Build 184

**Right Head Touch/Area Scan (61x101x1):** Measurement grid: dx=15mm, dy=15mm

Maximum value of SAR (interpolated) = 0.590 mW/g

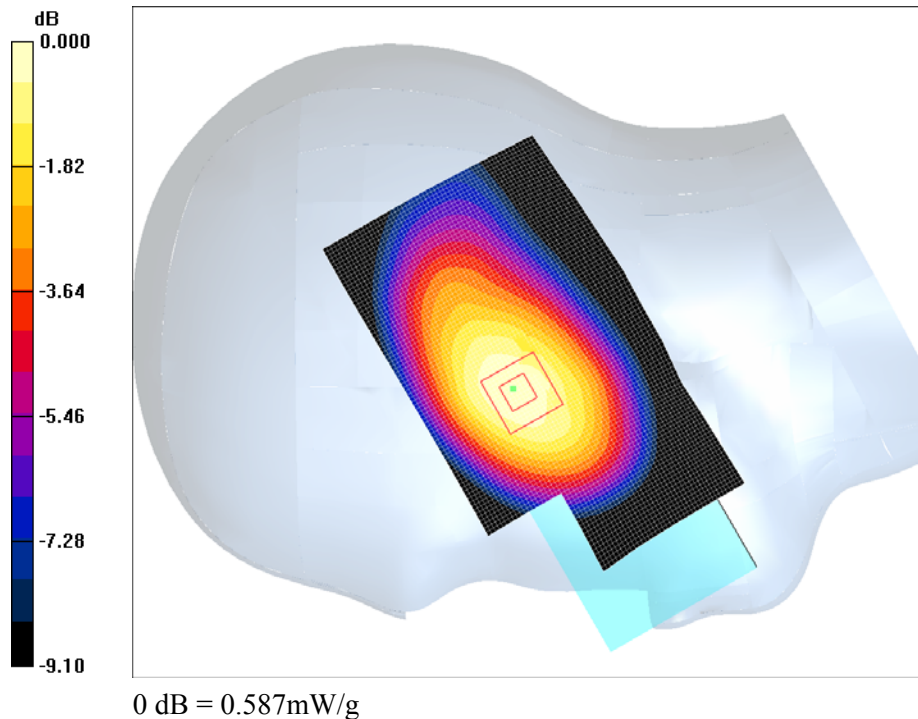
**Right Head Touch/Zoom Scan (7x7x7)/Cube 0:** Measurement grid: dx=5mm, dy=5mm, dz=5mm

Reference Value = 20.8 V/m; Power Drift = -2.11 dB

Peak SAR (extrapolated) = 0.741 W/kg

**SAR (1 g) = 0.556 mW/g; SAR (10 g) = 0.408 mW/g**

Maximum value of SAR (measured) = 0.587 mW/g



# 3

**Test Laboratory: Bay Area Compliance Lab Corp. (BACL)****Right Head Tilt (Low Channel)****Teltronic S.A.U; Type: HTT-500; Serial: R1010252-1**

Communication System: Low Channel; Frequency: 851.1 MHz; Duty Cycle: 1:4  
 Medium parameters used (interpolated):  $f = 851.1$  MHz;  $\sigma = 0.901$  mho/m;  $\epsilon_r = 41.3$ ;  $\rho = 1000$  kg/m<sup>3</sup>  
 Phantom section: Right Section

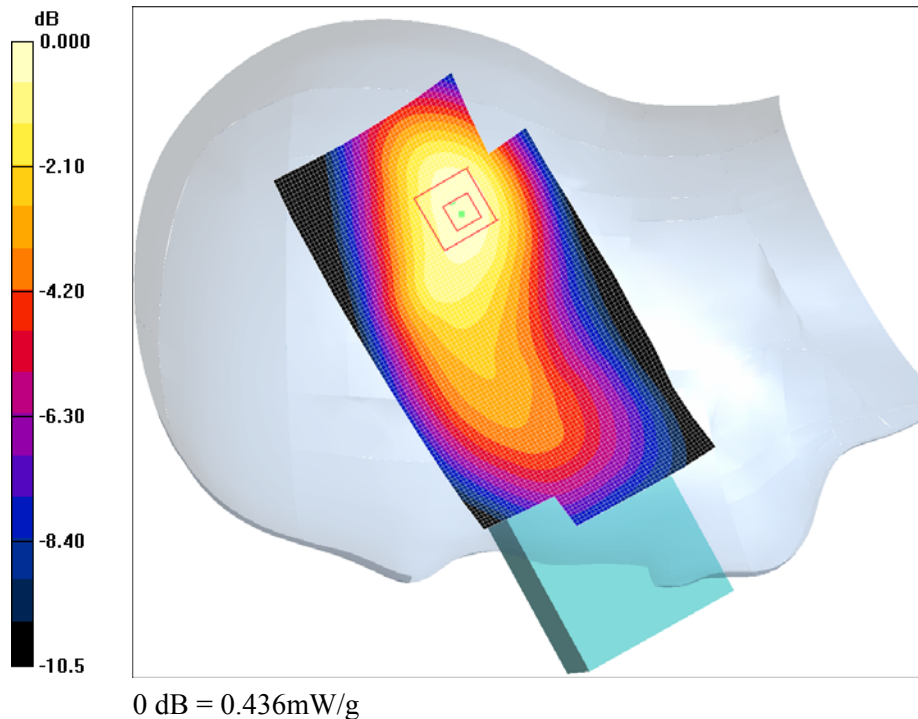
## DASY4 Configuration:

- Probe: ET3DV6 - SN1604; ConvF(6.26, 6.26, 6.26); Calibrated: 9/16/2010
- Sensor-Surface: 4mm (Mechanical Surface Detection)
- Electronics: DAE3 Sn456; Calibrated: 11/8/2007
- Phantom: SAM with CRP; Type: Twin SAM; Serial: TP-1032
- Measurement SW: DASY4, V4.6 Build 23; Postprocessing SW: SEMCAD, V1.8 Build 184

**Right Head Tilt /Area Scan (61x111x1):** Measurement grid: dx=15mm, dy=15mm  
 Maximum value of SAR (interpolated) = 0.445 mW/g

**Right Head Tilt /Zoom Scan (7x7x7)/Cube 0:** Measurement grid: dx=5mm, dy=5mm, dz=5mm  
 Reference Value = 21.0 V/m; Power Drift = -0.092 dB  
 Peak SAR (extrapolated) = 0.589 W/kg

**SAR (1 g) = 0.402 mW/g; SAR (10 g) = 0.283 mW/g**  
 Maximum value of SAR (measured) = 0.436 mW/g



# 4

**Test Laboratory: Bay Area Compliance Lab Corp. (BACL)****Left Head Touch (Low Channel)****Teltronic S.A.U; Type: HTT-500; Serial: R1010252-1**

Communication System: Low Channel; Frequency: 851.1 MHz; Duty Cycle: 1:4

Medium parameters used (interpolated):  $f = 851.1$  MHz;  $\sigma = 0.901$  mho/m;  $\epsilon_r = 41.3$ ;  $\rho = 1000$  kg/m<sup>3</sup>

Phantom section: Left Section

DASY4 Configuration:

- Probe: ET3DV6 - SN1604; ConvF(6.26, 6.26, 6.26); Calibrated: 9/16/2010
- Sensor-Surface: 4mm (Mechanical Surface Detection)
- Electronics: DAE3 Sn456; Calibrated: 11/8/2007
- Phantom: SAM with CRP; Type: Twin SAM; Serial: TP-1032
- Measurement SW: DASY4, V4.6 Build 23; Post processing SW: SEMCAD, V1.8 Build 184

**Left Head Touch/Area Scan (61x101x1):** Measurement grid: dx=15mm, dy=15mm

Maximum value of SAR (interpolated) = 0.723 mW/g

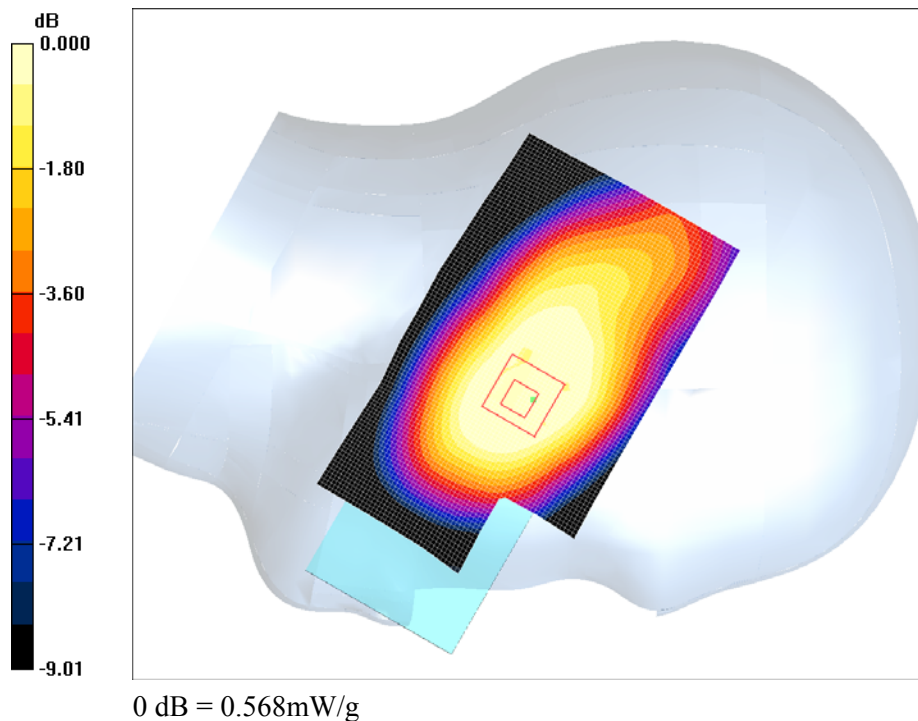
**Left Head Touch/Zoom Scan (7x7x7)/Cube 0:** Measurement grid: dx=5mm, dy=5mm, dz=5mm

Reference Value = 21.3 V/m; Power Drift = 0.250 dB

Peak SAR (extrapolated) = 0.675 W/kg

**SAR (1 g) = 0.534 mW/g; SAR (10 g) = 0.402 mW/g**

Maximum value of SAR (measured) = 0.568 mW/g



# 5

**Test Laboratory: Bay Area Compliance Lab Corp. (BACL)****Left Head Tilt (Low Channel)****Teltronic S.A.U; Type: HTT-500; Serial: R1010252-1**

Communication System: Low Channel; Frequency: 851.1 MHz; Duty Cycle: 1:4  
 Medium parameters used (interpolated):  $f = 851.1$  MHz;  $\sigma = 0.901$  mho/m;  $\epsilon_r = 41.3$ ;  $\rho = 1000$  kg/m<sup>3</sup>  
 Phantom section: Left Section

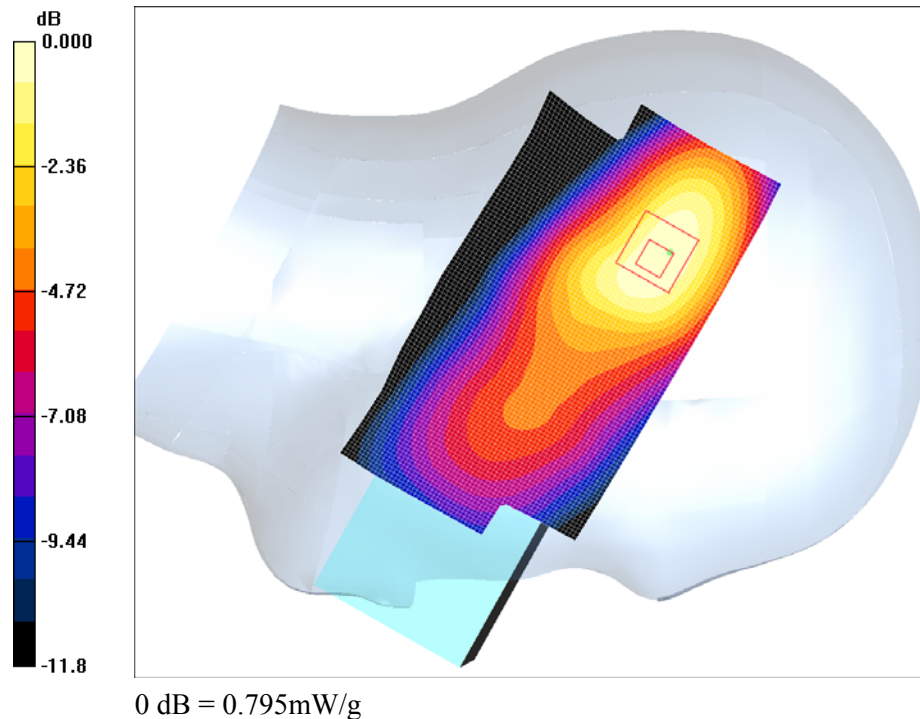
## DASY4 Configuration:

- Probe: ET3DV6 - SN1604; ConvF(6.26, 6.26, 6.26); Calibrated: 9/16/2010
- Sensor-Surface: 4mm (Mechanical Surface Detection)
- Electronics: DAE3 Sn456; Calibrated: 11/8/2007
- Phantom: SAM with CRP; Type: Twin SAM; Serial: TP-1032
- Measurement SW: DASY4, V4.6 Build 23; Post processing SW: SEMCAD, V1.8 Build 184

**Left Head Tilt /Area Scan (61x111x1):** Measurement grid: dx=15mm, dy=15mm  
 Maximum value of SAR (interpolated) = 0.787 mW/g

**Left Head Tilt /Zoom Scan (7x7x7)/Cube 0:** Measurement grid: dx=5mm, dy=5mm, dz=5mm  
 Reference Value = 24.5 V/m; Power Drift = -2.38 dB  
 Peak SAR (extrapolated) = 1.16 W/kg

**SAR (1 g) = 0.735 mW/g; SAR (10 g) = 0.471 mW/g**  
 Maximum value of SAR (measured) = 0.795 mW/g

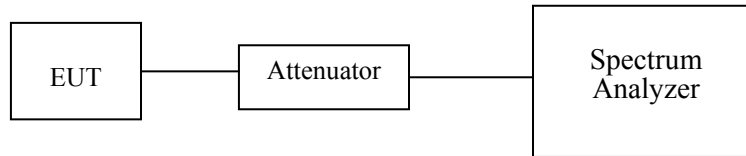


# 6

## APPENDIX F – OUTPUT POWER MEASUREMENT

### Test Block Diagram and Procedure

The RF output of the transmitter was connected to the input of the spectrum analyzer through sufficient attenuation.



### Test Equipment Lists and Details

Manufacturer	Description	Model Number	S/N	Calibration Due Date
Agilent	Spectrum Analyzer	E4440A	MY44303352	2011-05-09

### Test Results

Frequency (MHz)	Measured Conducted Output Power	
	(dBm)	(Watt)
806.1	29.42	0.87
815	29.31	0.85
823.9	29.28	0.85
<b>851.1</b>	<b>30.23</b>	<b>1.05</b>
860	30.17	1.04
868.9	29.94	0.99

## APPENDIX G – TEST SET UP PHOTOS

### Body Worn - Back Touch to Flat Phantom

(With Belt clip and Remote Speaker Microphone)



### Face Held - 2.5 cm Separation to Flat Phantom



### Right Head Touch



### Right Head Tilt



**Left Head Touch**



**Left Head Tilt**





**APPENDIX H- EUT PHOTOS**

---

**EUT – Front View**

*Confidentiality*

**EUT – Back View**

*Confidentiality*

**EUT – Side View**

*Confidentiality*

**EUT – Battery off View**

*Confidentiality*

**EUT – Battery View**

*Confidentiality*

**EUT – Remote Speaker Microphone**

*Confidentiality*

**EUT - Belt Clip**

*Confidentiality*

## APPENDIX I - INFORMATIVE REFERENCES

---

- [1] Federal Communications Commission, "Report and order: Guidelines for evaluating the environmental effects of radiofrequency radiation", Tech. Rep. FCC 96-326, FCC, Washington, D.C. 20554, 1996.
- [2] David L. Means Kwok Chan, Robert F. Cleveland, "Evaluating compliance with FCC guidelines for human exposure to radiofrequency electromagnetic fields", Tech. Rep., Federal Communication Commission, Office of Engineering & Technology, Washington, DC, 1997.
- [3] Thomas Schmid, Oliver Egger, and Niels Kuster, "Automated E-field scanning system for dosimetric assessments", IEEE Transactions on Microwave Theory and Techniques, vol. 44, pp. 105-113, Jan. 1996.
- [4] Niels Kuster, Ralph Kastle, and Thomas Schmid, "Dosimetric evaluation of mobile communications equipment with known precision", IEEE Transactions on Communications, vol. E80-B, no. 5, pp. 645-652, May 1997.
- [5] CENELEC, "Considerations for evaluating of human exposure to electromagnetic fields (EMFs) from mobile telecommunication equipment (MTE) in the frequency range 30MHz - 6GHz", Tech. Rep., CENELEC, European Committee for Electrotechnical Standardization, Brussels, 1997.
- [6] ANSI, ANSI/IEEE C95.1-1992: IEEE Standard for Safety Levels with Respect to Human Exposure to Radio Frequency Electromagnetic Fields, 3 kHz to 300 GHz, The Institute of Electrical and Electronics Engineers, Inc., New York, NY 10017, 1992.
- [7] Katja Pokovic, Thomas Schmid, and Niels Kuster, "Robust setup for precise calibration of E-field probes in tissue simulating liquids at mobile communications frequencies", in ICECOM '97, Dubrovnik, October 15-17, 1997, pp. 120-24.
- [8] Katja Pokovic, Thomas Schmid, and Niels Kuster, "E-field probe with improved isotropy in brain simulating liquids", in Proceedings of the ELMAR, Zadar, Croatia, 23-25 June, 1996, pp. 172-175.
- [9] Volker Hombach, Klaus Meier, Michael Burkhardt, Eberhard Kuhn, and Niels Kuster, "The dependence of EM energy absorption upon human head modeling at 900 MHz", IEEE Transactions on Microwave Theory and Techniques, vol. 44, no. 10, pp. 1865-1873, Oct. 1996.
- [10] Klaus Meier, Ralf Kastle, Volker Hombach, Roger Tay, and Niels Kuster, "The dependence of EM energy absorption upon human head modeling at 1800 MHz", IEEE Transactions on Microwave Theory and Techniques, Oct. 1997, in press.
- [11] W. Gander, Computermathematik, Birkhaeuser, Basel, 1992.
- [12] W. H. Press, S. A. Teukolsky, W. T. Vetterling, and B. P. Flannery, Numerical Recipes in C, The Art of Scientific Computing, Second Edition, Cambridge University Press, 1992. Dosimetric Evaluation of Sample device, month 1998 9
- [13] NIS81 NAMAS, "The treatment of uncertainty in EMC measurement", Tech. Rep., NAMAS Executive, National Physical Laboratory, Teddington, Middlesex, England, 1994.
- [14] Barry N. Taylor and Christ E. Kuyatt, "Guidelines for evaluating and expressing the uncertainty of NIST measurement results", Tech. Rep., National Institute of Standards and Technology, 1994. Dosimetric Evaluation of Sample device, month 1998 10.

\*\*\*\*\* END OF REPORT \*\*\*\*\*