

MDT-400 409-430 MHz Mobile Radiotelephone

Internal Photographs

Code: D262Z28PT
Version: 1.0
Date: 22/01/2018

PowerTrunk Inc. is the subsidiary of Teltronic S.A.U. responsible for business development, distribution and customer support for Teltronic's Land Mobile Radio products in North America. The company is headquartered in New Jersey. Teltronic S.A.U. distributes the same products for Land Mobile Radio under different trademarks and brand names in other regions of the world.

Disclaimer

Although every reasonable effort has been made to ensure the accuracy of the information contained herein and in any other referred document, this should not be construed as a commitment on the part of Teltronic S.A.U. and/or PowerTrunk Inc., and the liability of Teltronic S.A.U. and/or PowerTrunk Inc. for any errors and omissions shall be limited to the correction of such errors and omissions. Teltronic S.A.U. and/or PowerTrunk Inc. welcomes any comment as a way to improve any delivered documentation.

The information contained herein has been prepared for the use of appropriately trained personnel, and it is intended for the purpose of the agreement under which the information is submitted. Any party using or relying upon this information assumes full responsibility for such use and in no event shall Teltronic S.A.U. and/or PowerTrunk Inc. be liable to anyone for special, collateral, incidental, or consequential damages in connection with or arising out of the use of this information.

The information or statements given in these documents regarding the suitability, capacity or performance of the mentioned hardware or software products cannot be considered binding but shall be defined in the agreement made between Teltronic S.A.U. and/or PowerTrunk Inc. and the customer.

Teltronic S.A.U. and/or PowerTrunk Inc. reserves the right to revise these documents and to make changes to their content at any time without prior notification.

Copyright

No part of the information contained herein and in the other referred documents may be copied, distributed or transmitted by any means to any other party without prior written permission of Teltronic S.A.U. and/or PowerTrunk Inc. The distribution of this document may be also covered by NDA (non-disclosure agreement) between Teltronic S.A.U. and/or PowerTrunk Inc. and the receiver.

Please also note that part of these contents even may be covered by patent rights.

This document, the referred documents and the described product are considered protected by copyright according to the applicable laws.

PowerTrunk and the PowerTrunk logo are registered trademarks of Teltronic S.A.U.

Copyright © PowerTrunk Inc. All rights reserved.

CONTENTS

1. INTERNAL STRUCTURE.....	4
2. MDT-400 409-430 MHZ EXPLODING VIEWS	5
3. MDT-400 409-430 MHZ RADIO PCB	8
3.1 UPPER SIDE OF THE RADIO PCB	8
3.2 LOWER SIDE OF THE RADIO PCB	9
4. MDT-400 409-430 MHZ CONTROL PCB.....	10
4.1 UPPER SIDE OF THE CONTROL PCB.....	10
4.2 LOWER SIDE OF THE CONTROL PCB	11
5. MDT-400 409-430 MHZ GPS PCB	12
5.1 UPPER SIDE OF THE GPS PCB	12
5.2 LOWER SIDE OF THE GPS PCB	12
6. MDT-400 409-430 MHZ BRIDGE PCB	13
6.1 UPPER SIDE OF THE BRIDGE PCB.....	13
6.2 LOWER SIDE OF THE BRIDGE PCB.....	13

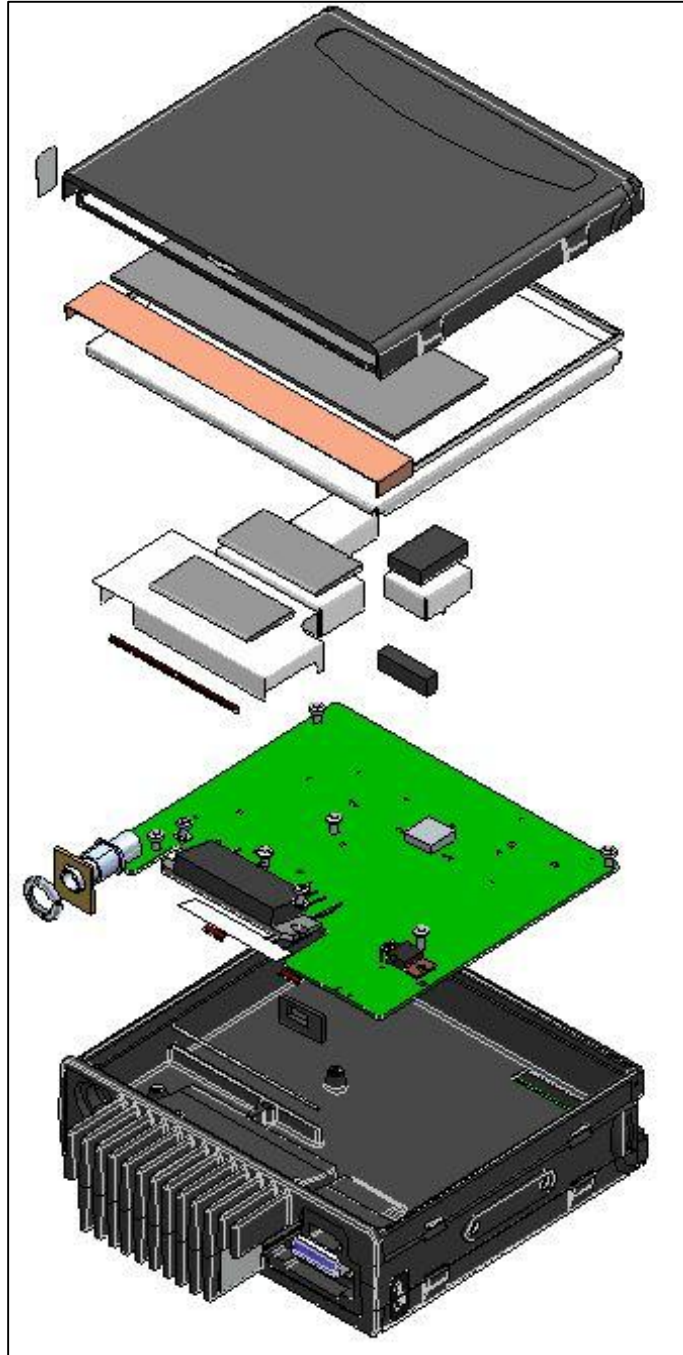
1. INTERNAL STRUCTURE

The internal structure of the MDT-400 409-430 MHz can be spotted by opening the upper and lower lids, as shown in the pictures below.

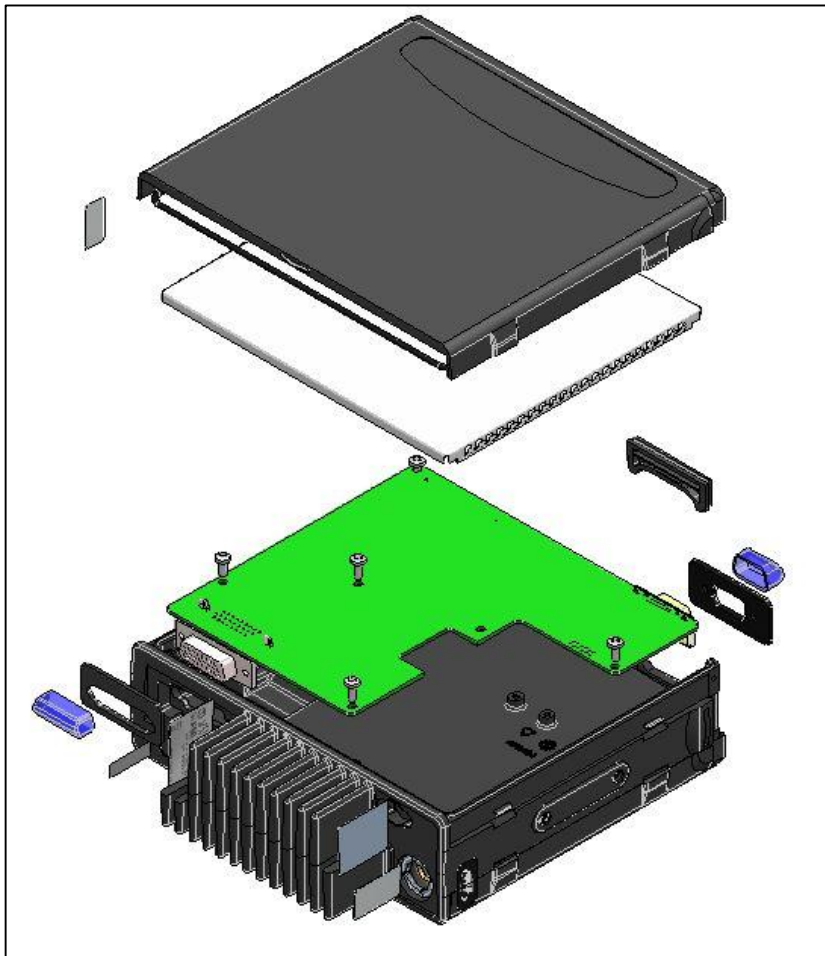


2. MDT-400 409-430 MHz EXPLODING VIEWS

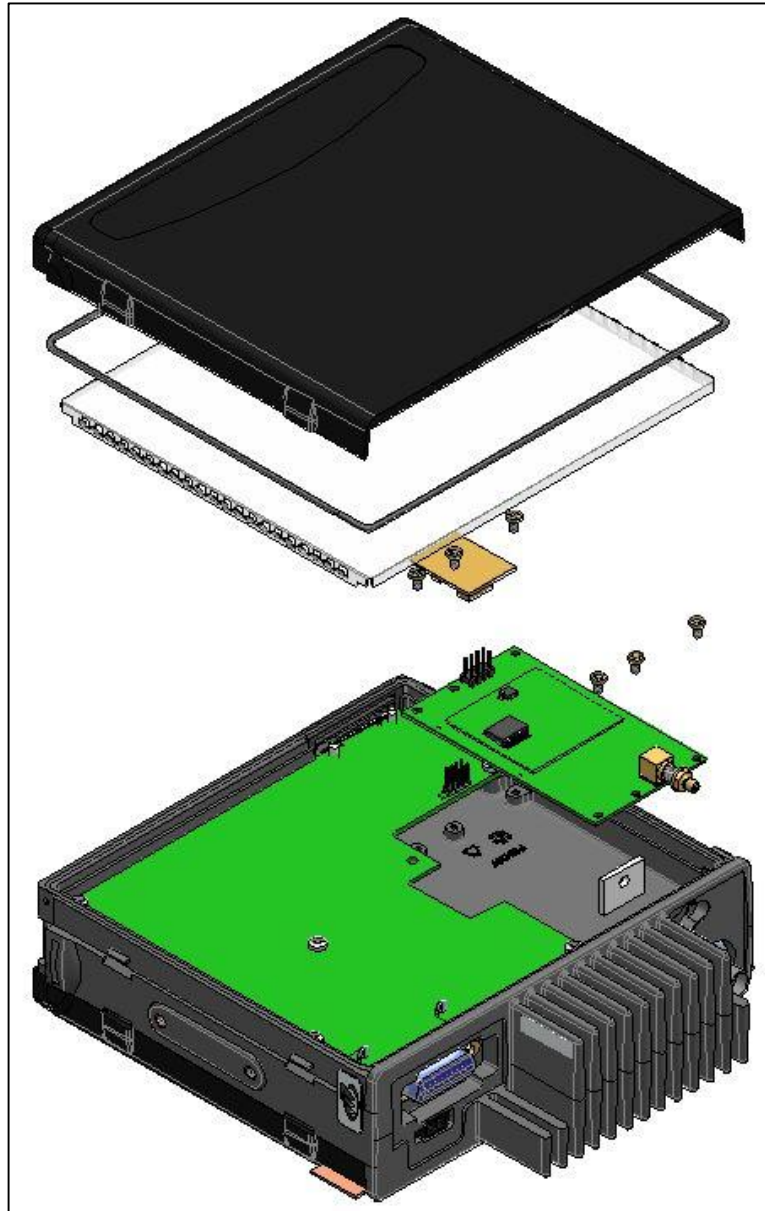
The picture below shows the Radio Board and all other items that take part in the assembly of the MDT-400 upper side:



The three remaining boards of the terminal are integrated in the lower cavity of the chassis and their names are Control, GPS and Bridge PCB respectively. The exploding view below shows the assembly of the Control Board:

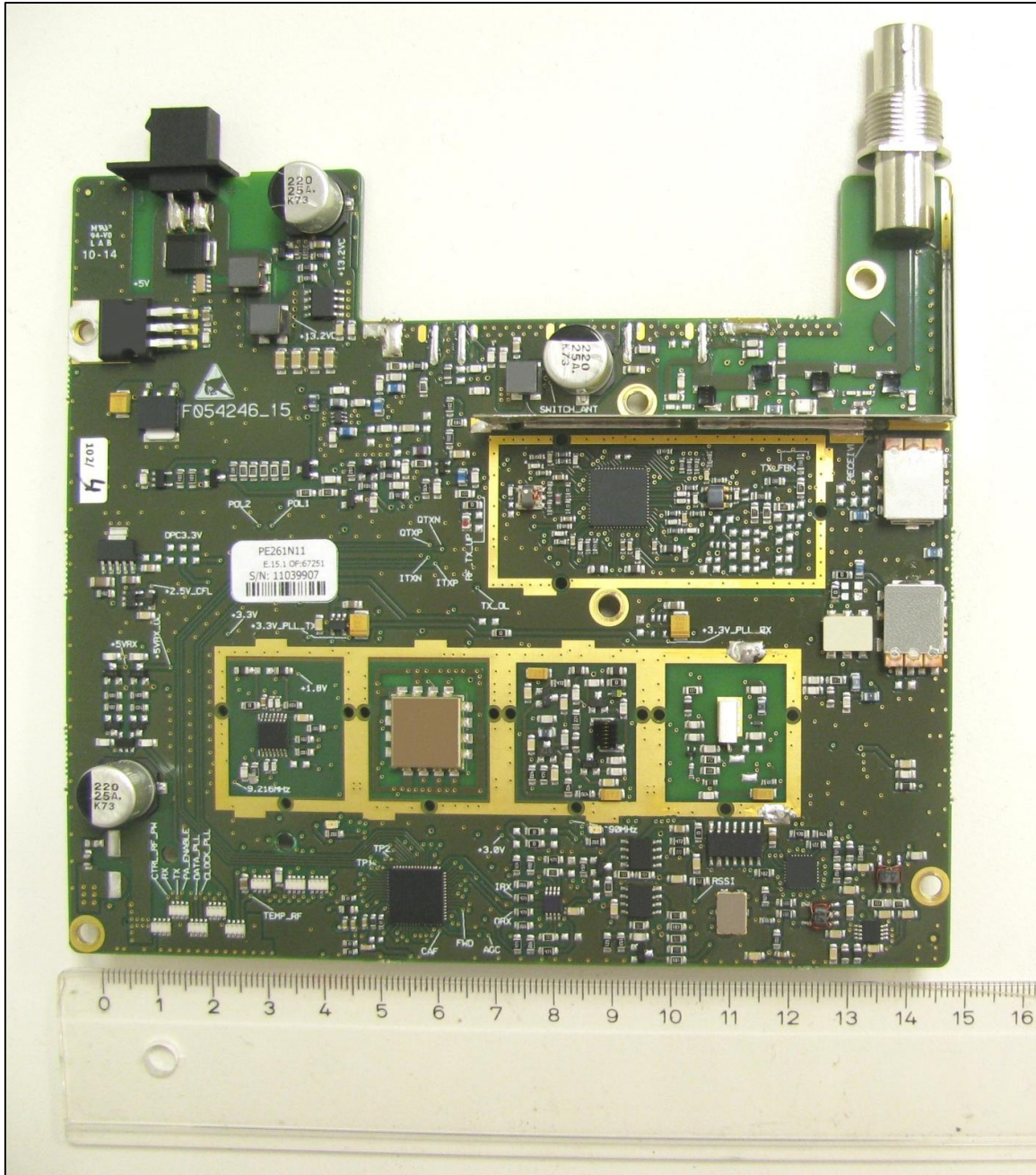


The GPS board is optional and is fitted in a specific location next to the Control Board. Both of them are connected through the Bridge Board as shown below:

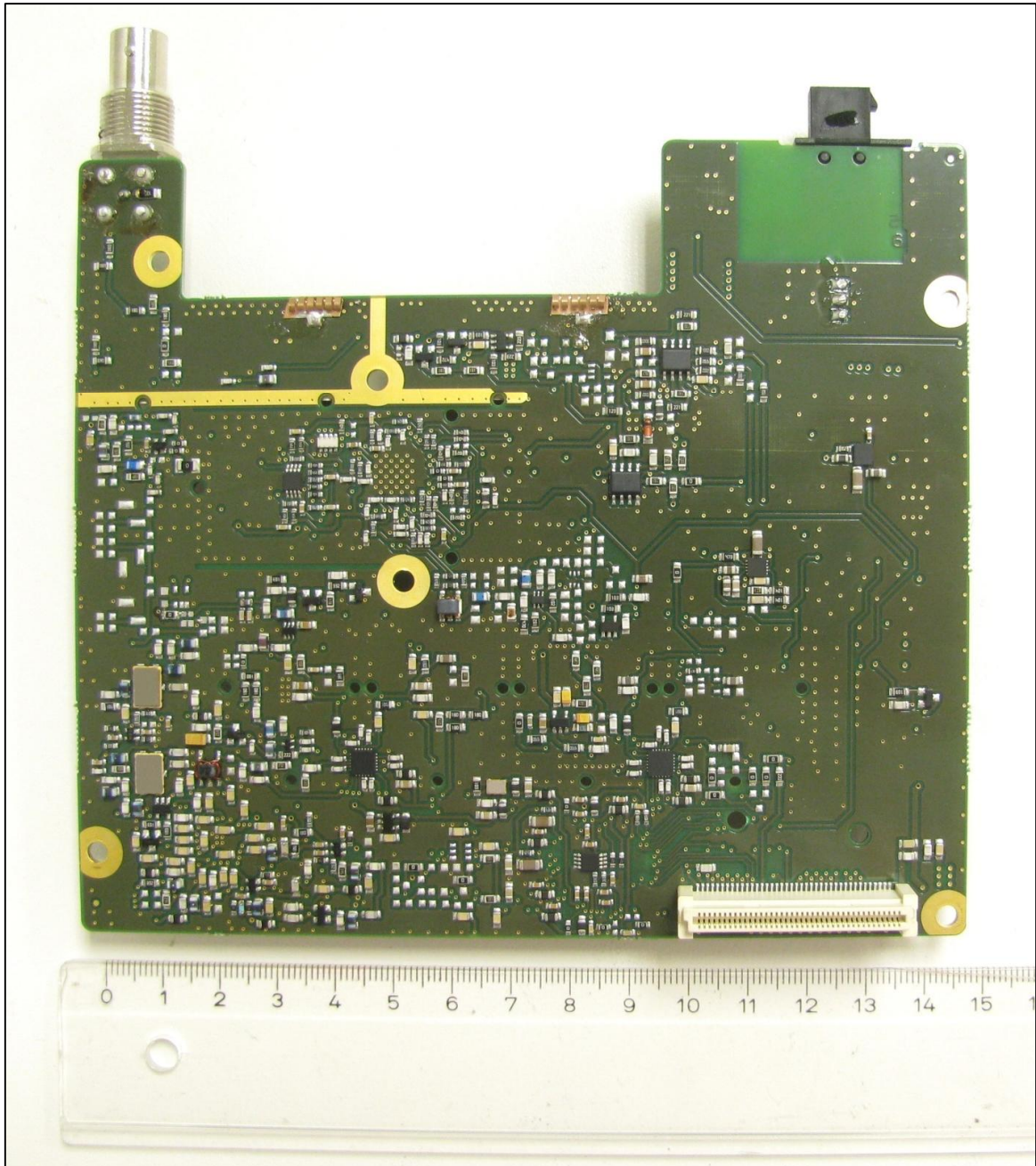


3. MDT-400 409-430 MHz RADIO PCB

3.1 UPPER SIDE OF THE RADIO PCB

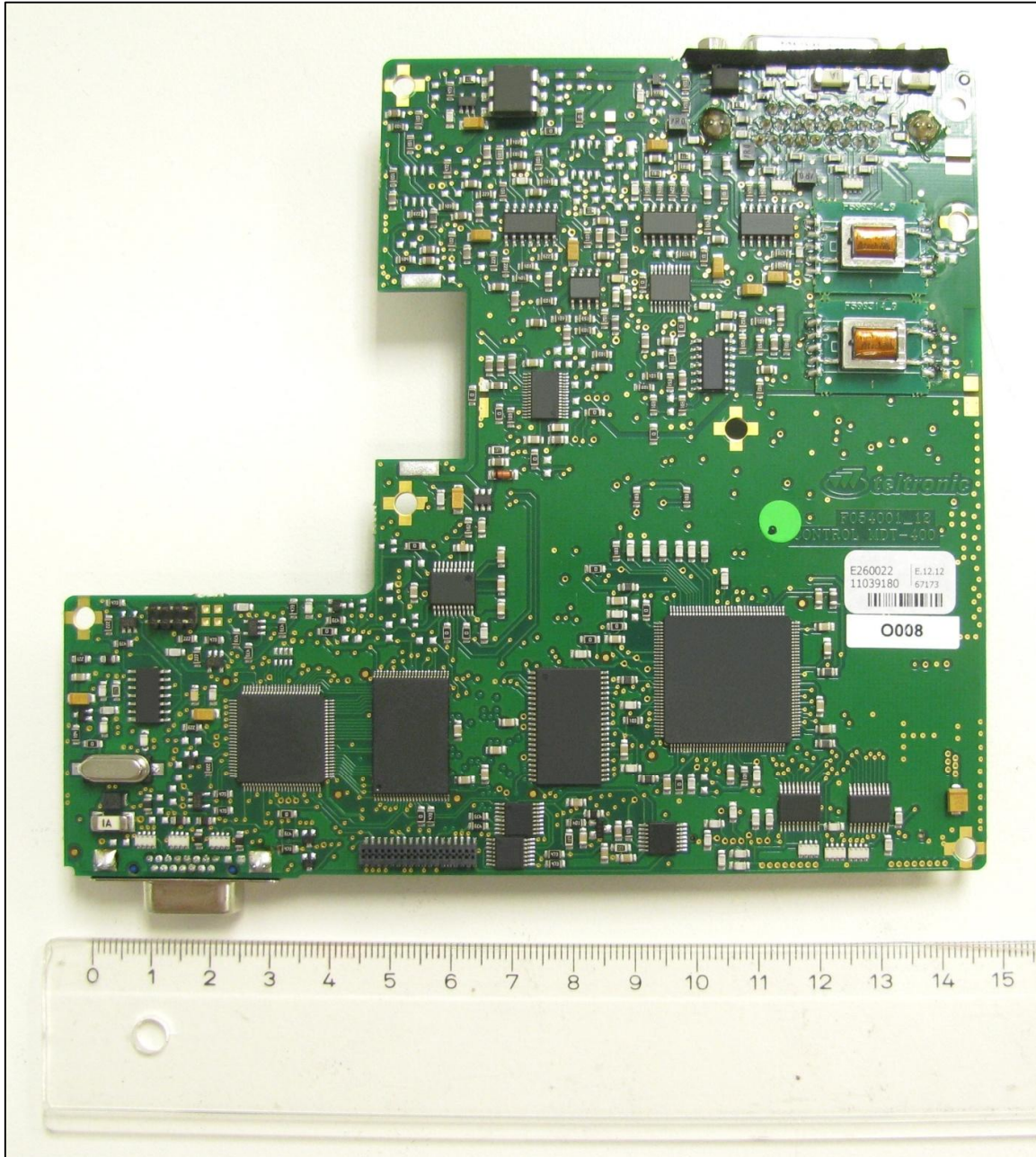


3.2 LOWER SIDE OF THE RADIO PCB

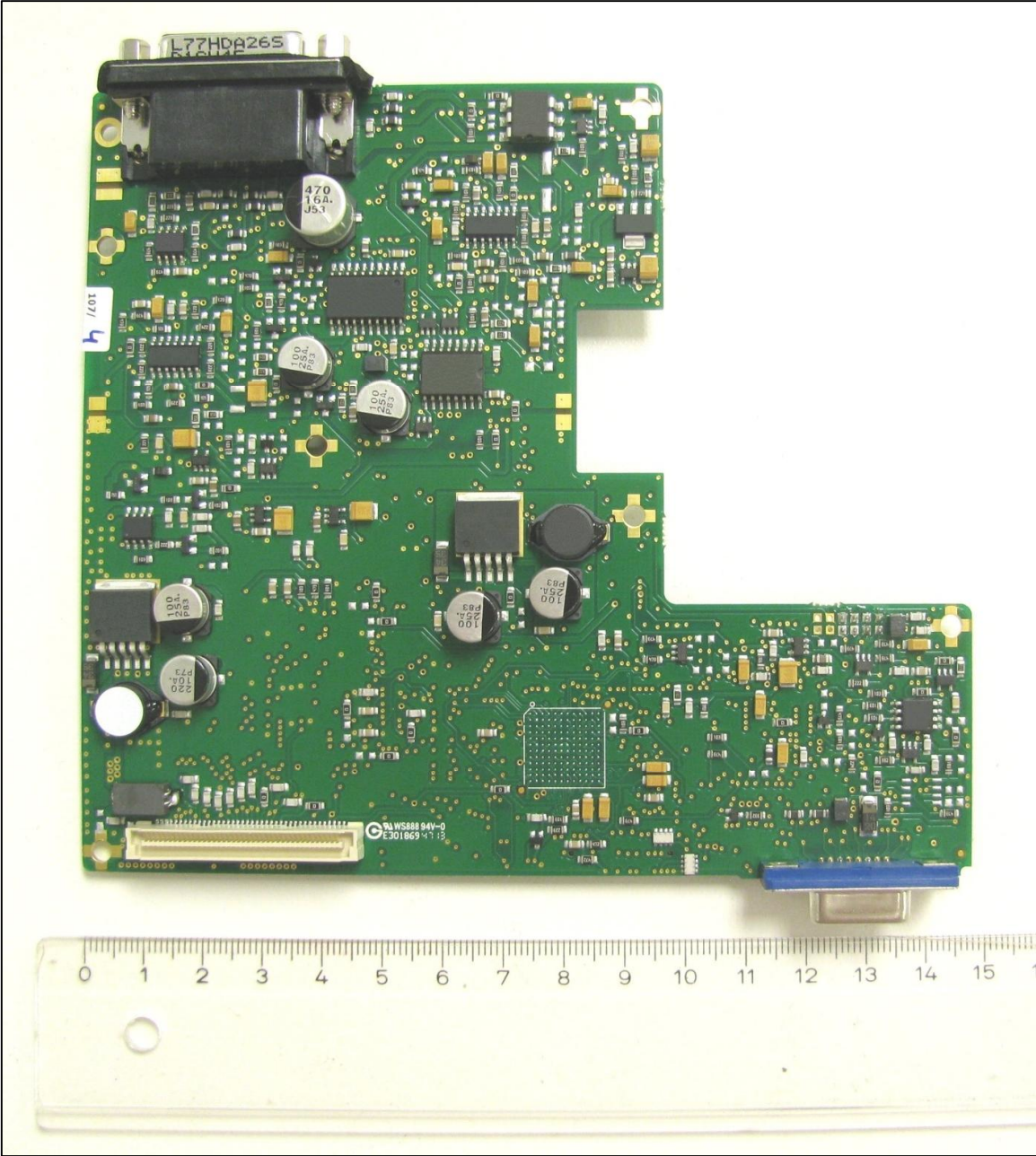


4. MDT-400 409-430 MHz CONTROL PCB

4.1 UPPER SIDE OF THE CONTROL PCB

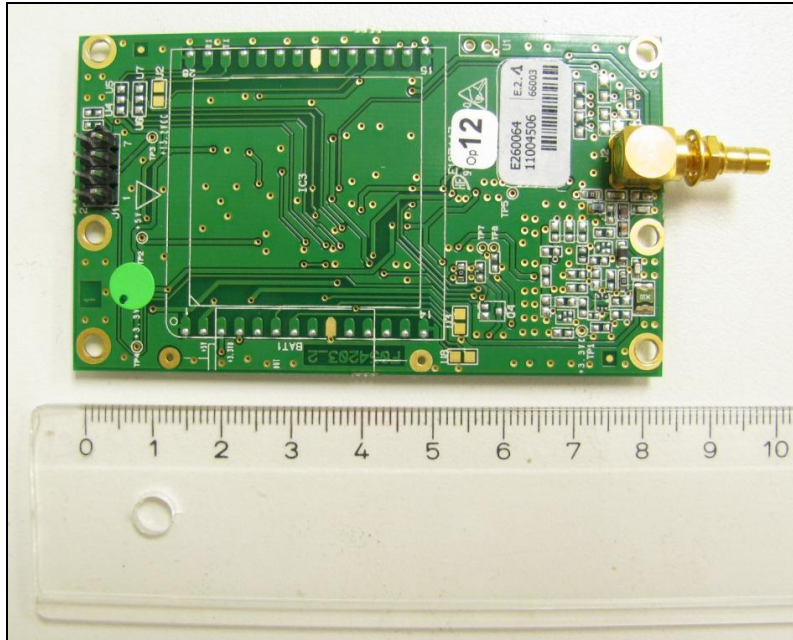


4.2 LOWER SIDE OF THE CONTROL PCB

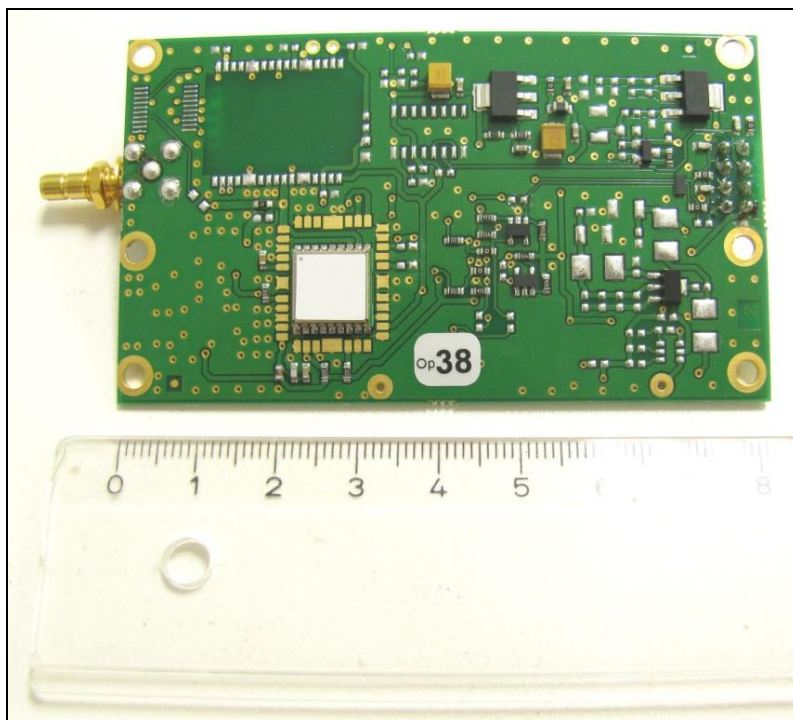


5. MDT-400 409-430 MHz GPS PCB

5.1 UPPER SIDE OF THE GPS PCB

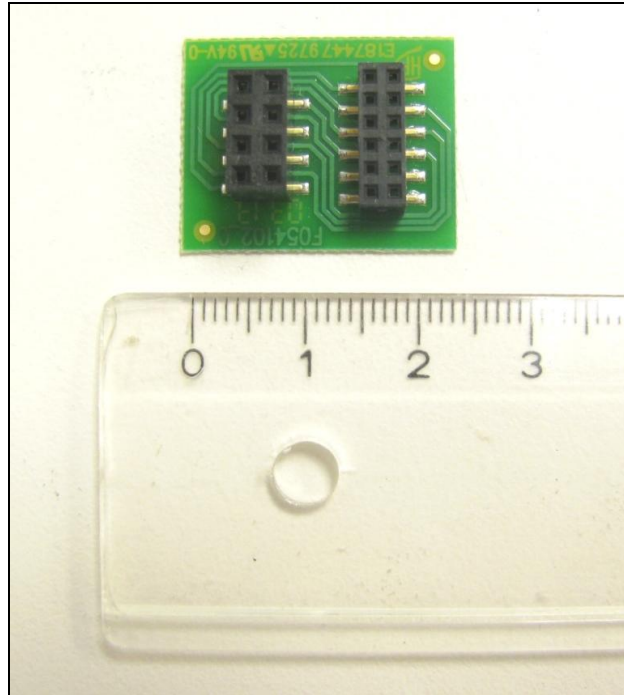


5.2 LOWER SIDE OF THE GPS PCB



6. MDT-400 409-430 MHz BRIDGE PCB

6.1 UPPER SIDE OF THE BRIDGE PCB



6.2 LOWER SIDE OF THE BRIDGE PCB

