



## INTERNAL DOSSIER BSR75

**PRODUCT:** BSR75

**CODE:** D138X61PT

**VERSION:** 02

**REVISION:** 00

**DATE:** 27/07/16

**CLASSIFICATION:**

General information

Internal document

### DOCUMENT MAINTENANCE

THIS DOCUMENT HAS 27 PAGES

EDIT.	DATE	AUTHOR	DESCRIPTION
1.0	15/07/09	A. Narvaiza	Pictures of BSR75
2.0	27/07/16	C. Casanova / P. Paredes	Pictures updated

### DOCUMENT APPROVAL

ACTIVITY	NAME	DATE	SIGNATURE
Prepared	C. Casanova / P. Paredes	27/07/16	
Revised Project Manager	J. Cuchi		
Approved R&D Director	A. Calderón		



## DOSSIER BSR75

Code: D138X61PT

Date: 27/07/16

Page: 2 of 27

### **Disclaimer**

*Although every reasonable effort has been made to ensure the accuracy of the information contained herein and any other referred document, this should not be construed as a commitment on the part of Teltronic S.A. Unipersonal, and the liability of Teltronic S.A. Unipersonal for any errors and omissions shall be limited to the correction of such errors and omissions. Teltronic S.A. Unipersonal welcomes any comment as a way to improve any delivered documentation.*

*The information contained herein has been prepared for the use of appropriately trained personnel, and it is intended for the purpose of the agreement under which the information is submitted. Any party using or relying upon this information assumes full responsibility for such use and in no event shall Teltronic S.A. Unipersonal be liable to anyone for especial, collateral, incidental, or consequential damages in connection with or arising out of the use of this information.*

*The information or statements given in these documents regarding the suitability, capacity or performance of the mentioned hardware or software products cannot be considered binding but shall be defined in the agreement made between Teltronic S.A. Unipersonal and the customer.*

*Teltronic S.A. Unipersonal reserves the right to revise these documents and to make changes to its content at any time, without prior notification.*

### **Copyrights**

*No part of the information contained herein and the other referred documents may be copied, distributed or transmitted by any means to any other party without prior written permission of Teltronic S.A. Unipersonal. The distribution of this document may be also covered by NDA (non-disclosure agreement) between Teltronic S.A. Unipersonal and the receiver.*

*Please also note that part of these contents even may be covered by patent rights.*

*This document, the referred documents and the described product are considered protected by copyright according to the applicable laws.*

*Teltronic and the Teltronic logo are registered trademarks of Teltronic S.A. Unipersonal.*

*Copyright © Teltronic S.A. Unipersonal. All rights reserved.*



## DOSSIER BSR75

Code: D138X61PT

Date: 27/07/16

Page: 3 of 27

### CONTENTS:

1.	BACKPLANE BSR75 .....	4
1.1.	BACKPLANE PCB TOP LAYER PICTURES .....	4
1.2.	BACKPLANE PCB BOTTOM LAYER PICTURE .....	5
2.	BSYNC .....	6
2.1.	FRONT PICTURE .....	6
2.2.	BSYNC PCB TOP LAYER PICTURES .....	7
2.3.	BSYNC PCB BOTTOM LAYER PICTURE .....	8
3.	RCPU .....	9
3.1.	FRONT PICTURE .....	9
3.2.	RCPU PCB TOP LAYER PICTURES .....	10
3.3.	RCPU PCB BOTTOM LAYER PICTURES .....	12
4.	RPA75 .....	13
4.1.	FRONT PICTURE .....	13
4.2.	RPA PCB TOP PICTURES .....	14
4.3.	RPA PCB BOTTOM PICTURE .....	16
5.	RPS FRONT PICTURE .....	17
5.1.	RPS PCB TOP LAYER PICTURES .....	18
5.2.	RPS PCB BOTTOM LAYER PICTURE .....	19
6.	RRX .....	20
6.1.	FRONT PICTURE .....	20
6.2.	RRX PCB TOP LAYER PICTURES .....	21
6.3.	RRX PCB BOTTOM LAYER PICTURES .....	22
6.4.	RRX GENERAL PICTURES .....	23
7.	RTX75 .....	24
7.1.	FRONT PICTURE .....	24
7.2.	RTX75 PCB TOP LAYER PICTURES .....	25
7.3.	RTX75 PCB BOTTOM LAYER PICTURES .....	26
7.4.	RTX75 GENERAL PICTURES .....	27



# DOSSIER BSR75

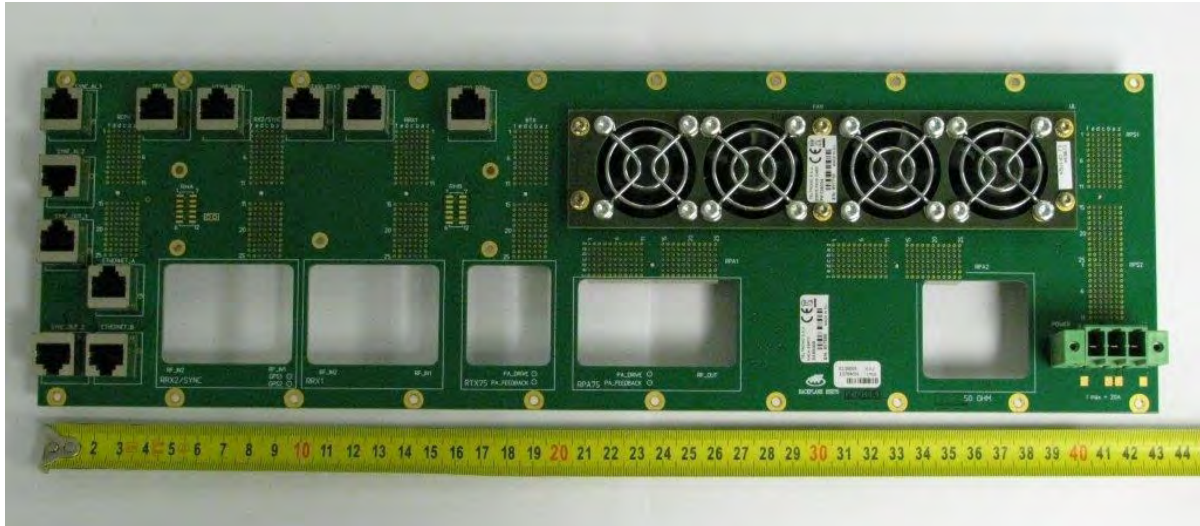
Code: D138X61PT

Date: 27/07/16

Page: 4 of 27

## 1. BACKPLANE BSR75

### 1.1. BACKPLANE PCB TOP LAYER PICTURES





## DOSSIER BSR75

Code: D138X61PT

Date: 27/07/16

Page: 5 of 27

### 1.2. BACKPLANE PCB BOTTOM LAYER PICTURE





## DOSSIER BSR75

Code: D138X61PT

Date: 27/07/16

Page: 6 of 27

## 2. BSYNC

### 2.1. FRONT PICTURE





**2.2. BSYNC PCB TOP LAYER PICTURES**





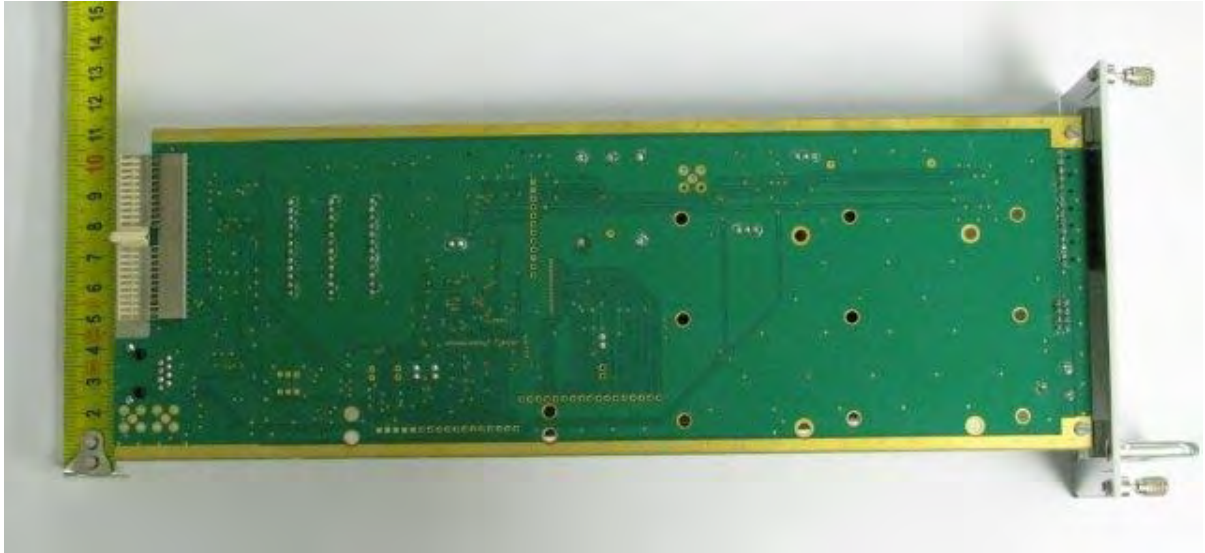
## DOSSIER BSR75

Code: D138X61PT

Date: 27/07/16

Page: 8 of 27

### 2.3. BSYNC PCB BOTTOM LAYER PICTURE







## DOSSIER BSR75

Code: D138X61PT

Date: 27/07/16

Page: 9 of 27

### 3. RCPU

#### 3.1. FRONT PICTURE





## DOSSIER BSR75

Code: D138X61PT

Date: 27/07/16

Page: 10 of 27

### 3.2. RCPU PCB TOP LAYER PICTURES



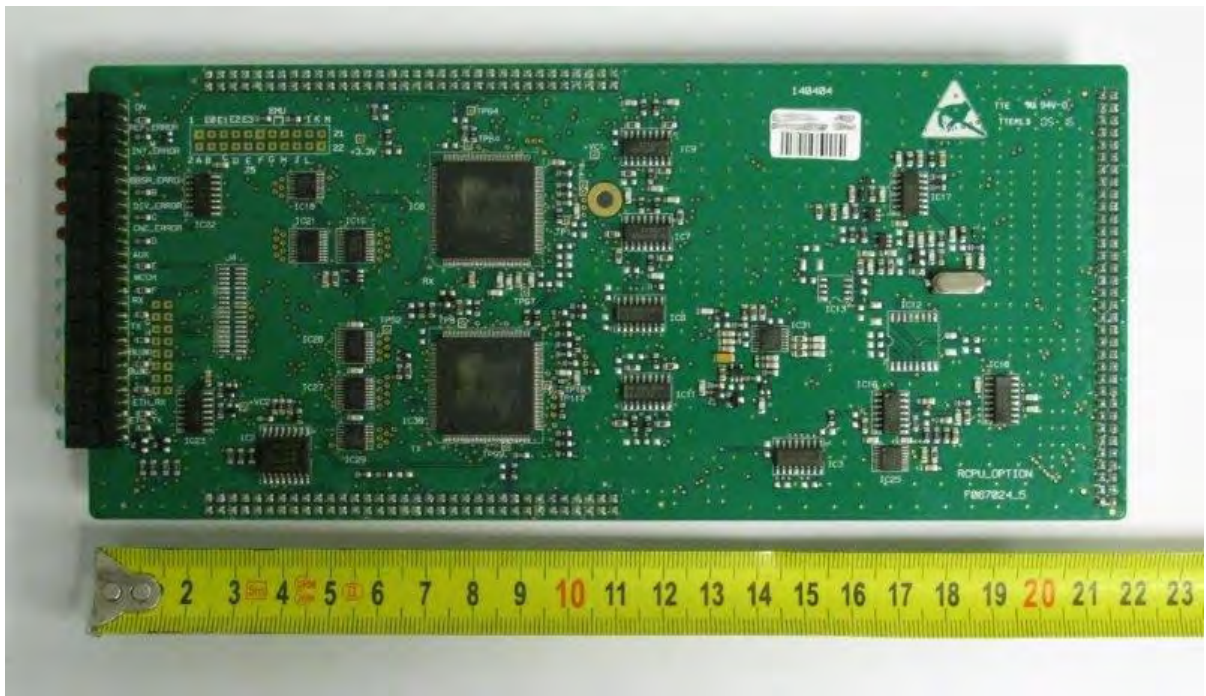


# DOSSIER BSR75

Code: D138X61PT

Date: 27/07/16

Page: 11 of 27





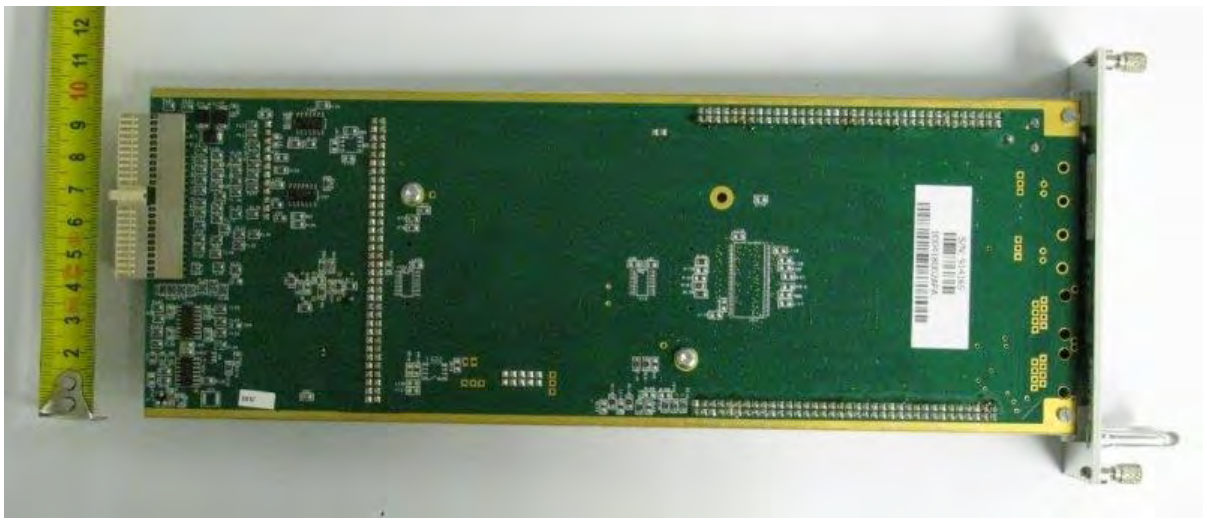
## DOSSIER BSR75

Code: D138X61PT

Date: 27/07/16

Page: 12 of 27

### 3.3. RCPU PCB BOTTOM LAYER PICTURES





## DOSSIER BSR75

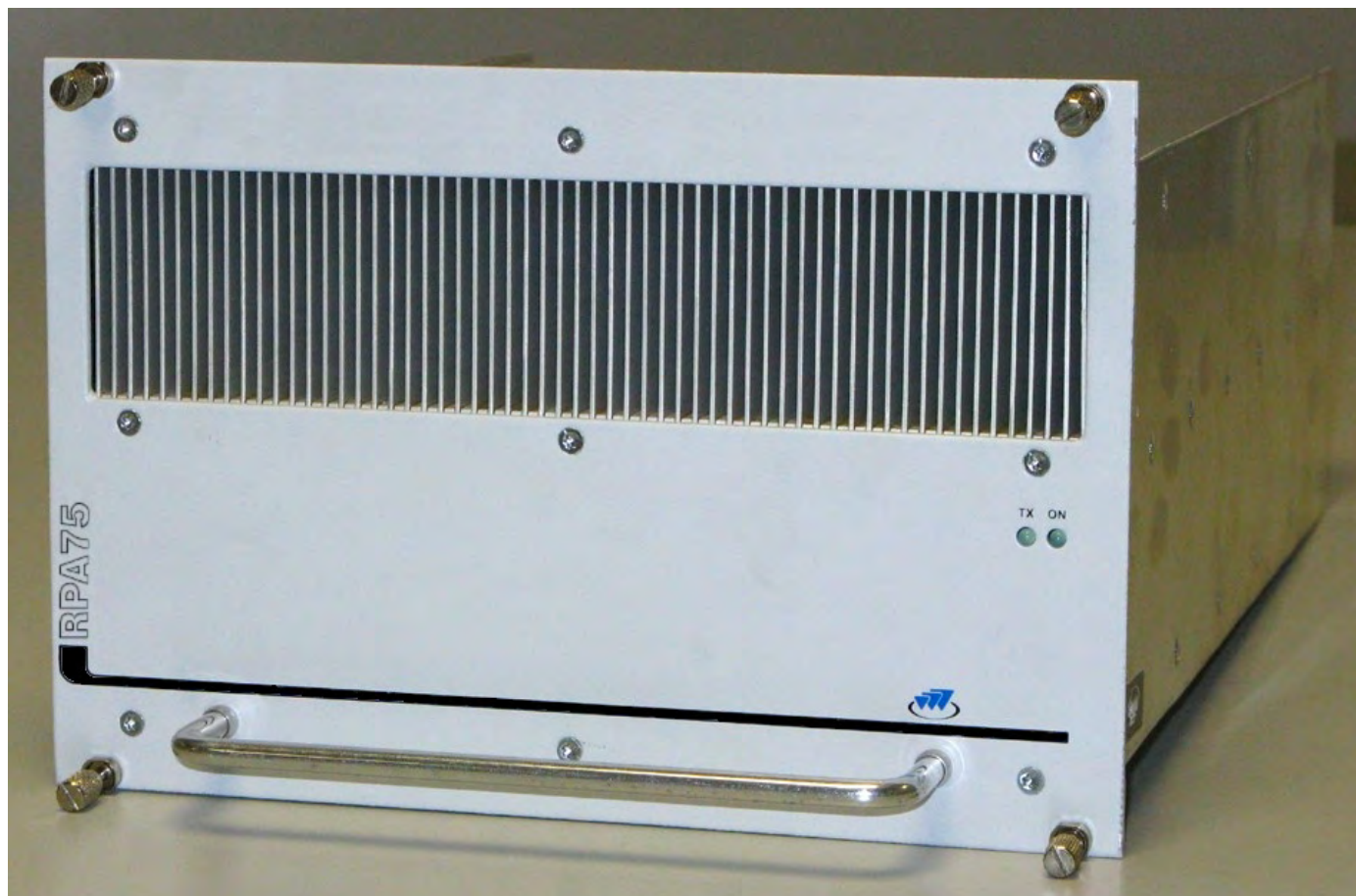
Code: D138X61PT

Date: 27/07/16

Page: 13 of 27

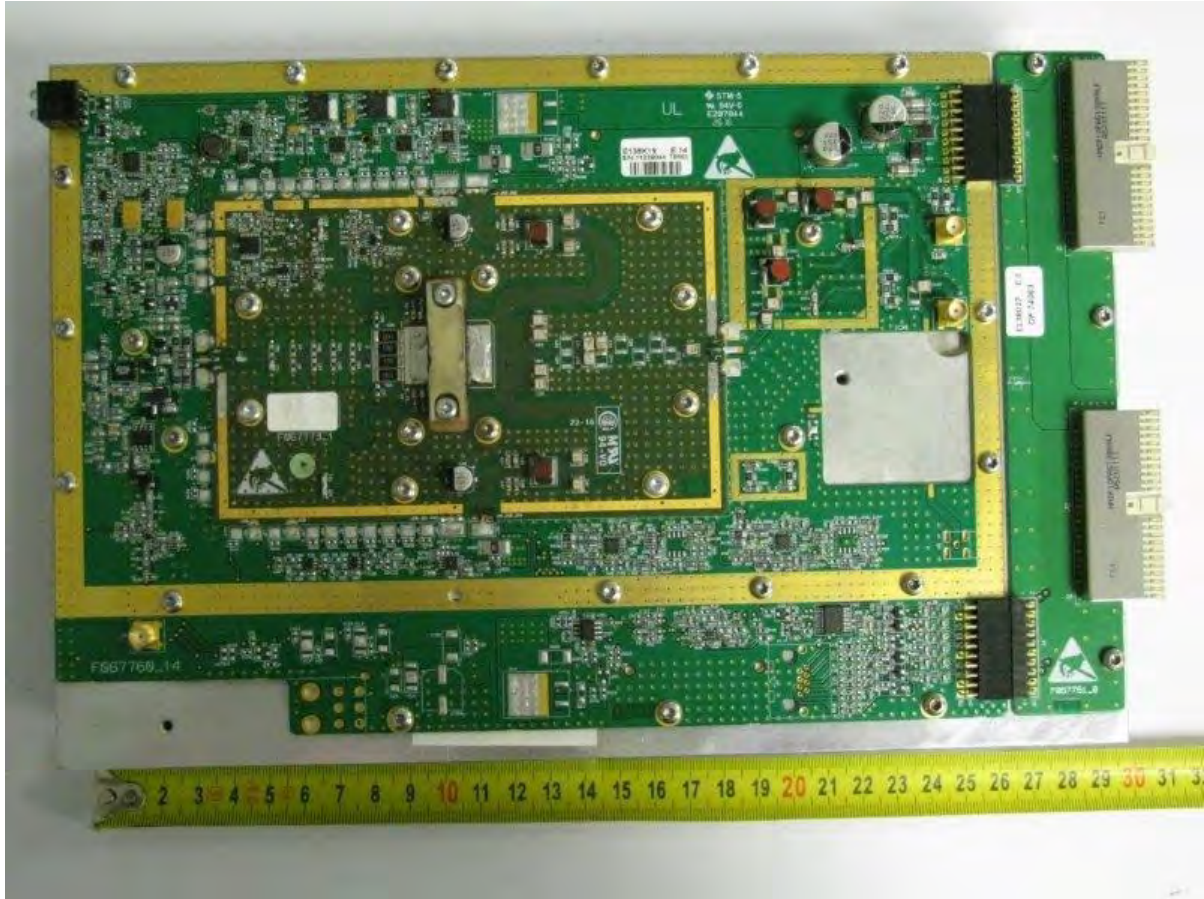
### 4. RPA75

#### 4.1. FRONT PICTURE





4.2. RPA PCB TOP PICTURES





# DOSSIER BSR75

Code: D138X61PT

Date: 27/07/16

Page: 15 of 27





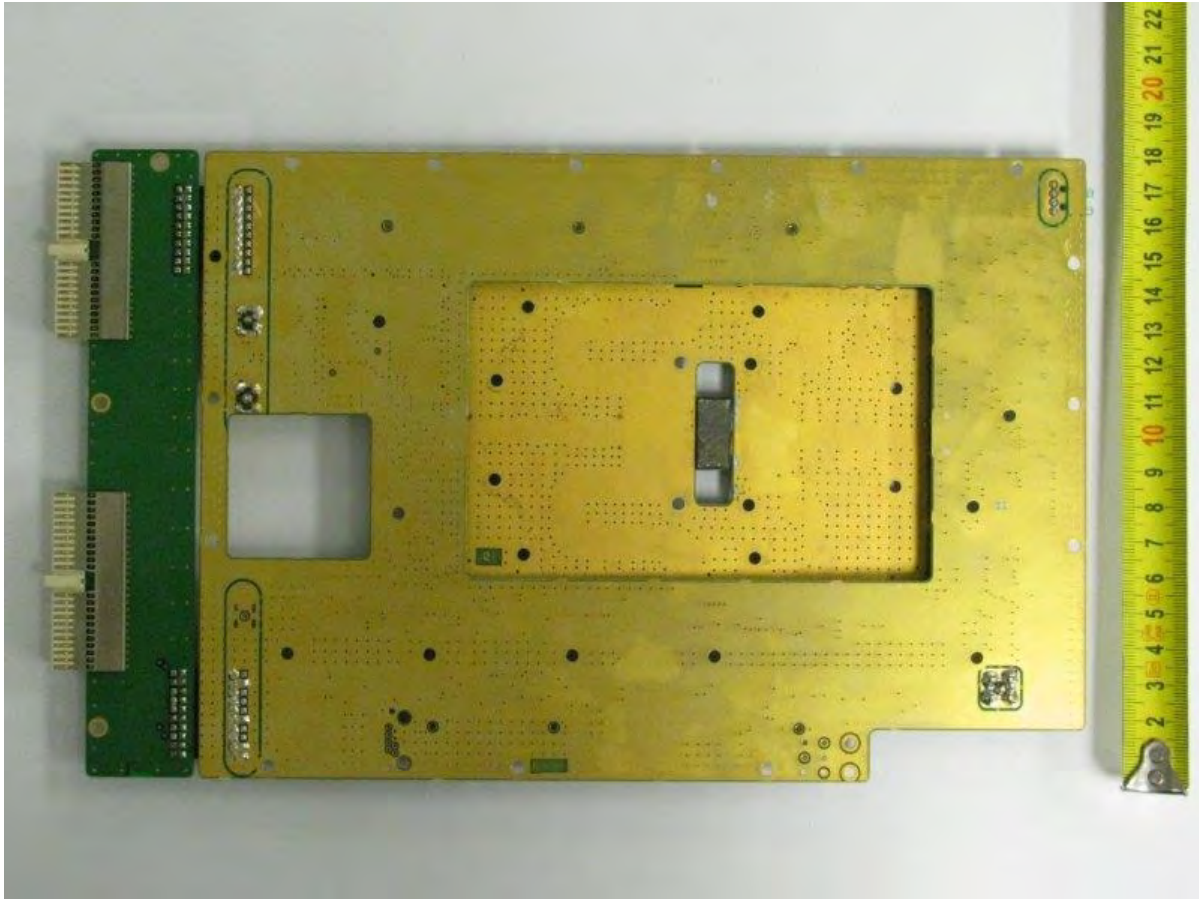
## DOSSIER BSR75

Code: D138X61PT

Date: 27/07/16

Page: 16 of 27

### 4.3. RPA PCB BOTTOM PICTURE







## DOSSIER BSR75

Code: D138X61PT

Date: 27/07/16

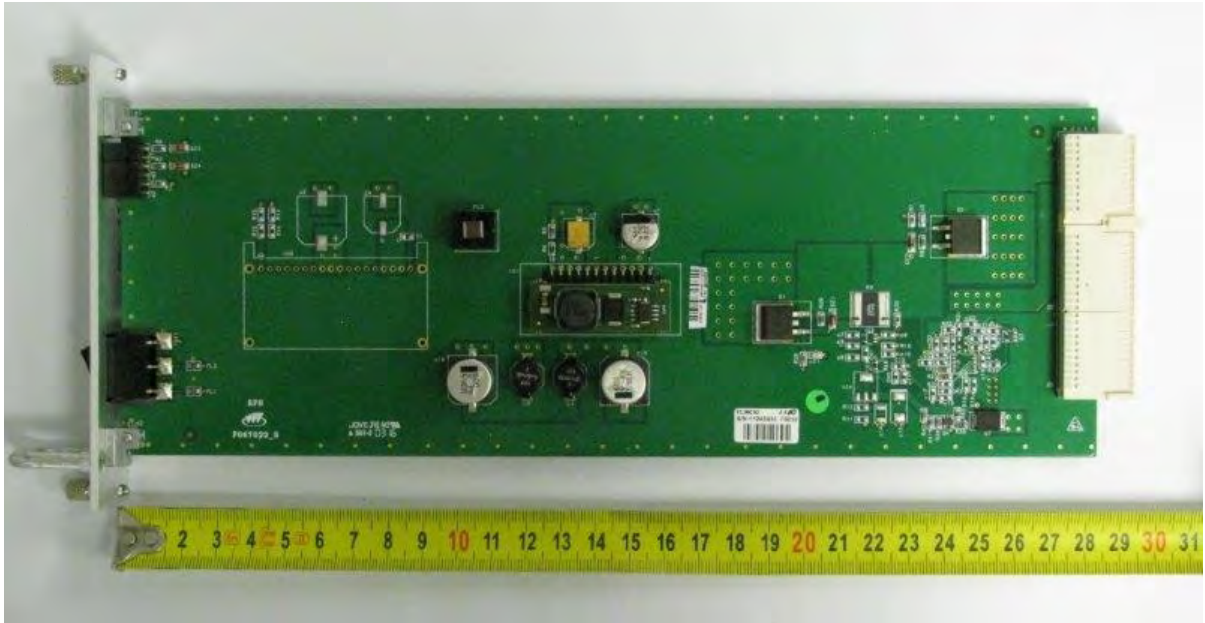
Page: 17 of 27

### 5. RPS FRONT PICTURE





5.1. RPS PCB TOP LAYER PICTURES





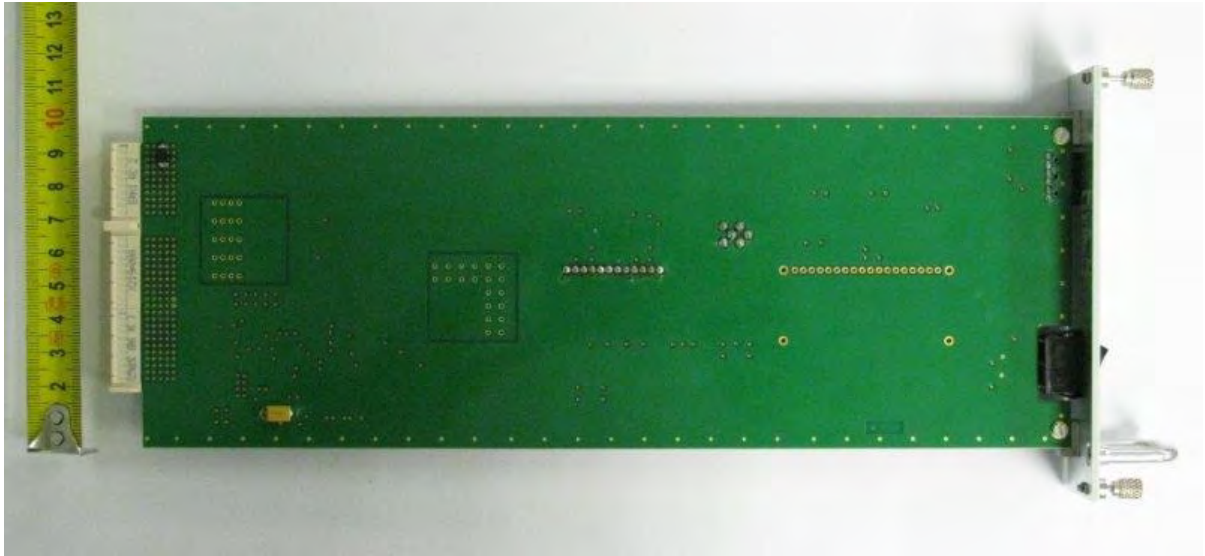
## DOSSIER BSR75

Code: D138X61PT

Date: 27/07/16

Page: 19 of 27

### 5.2. RPS PCB BOTTOM LAYER PICTURE





## DOSSIER BSR75

Code: D138X61PT

Date: 27/07/16

Page: 20 of 27

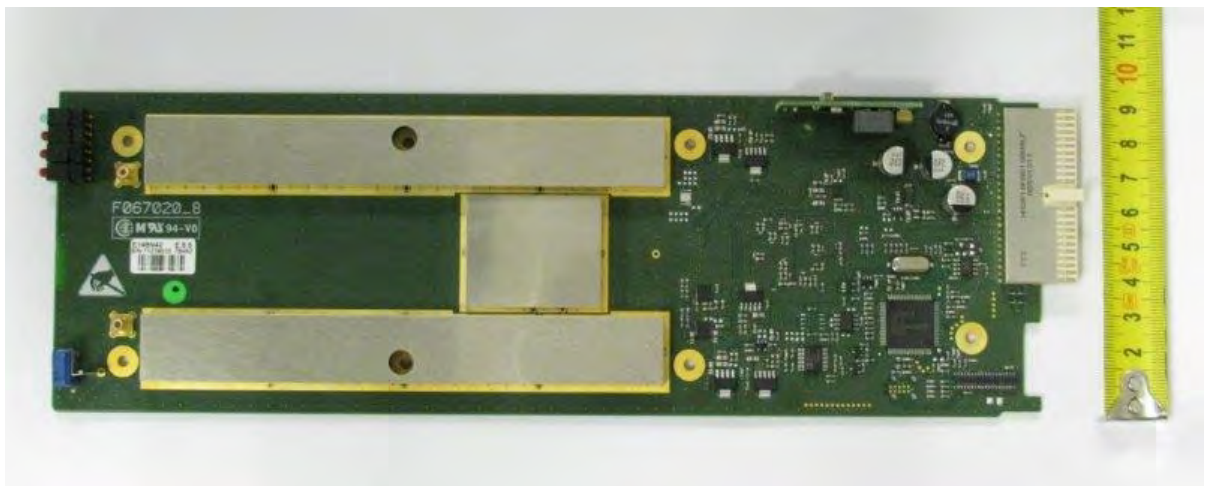
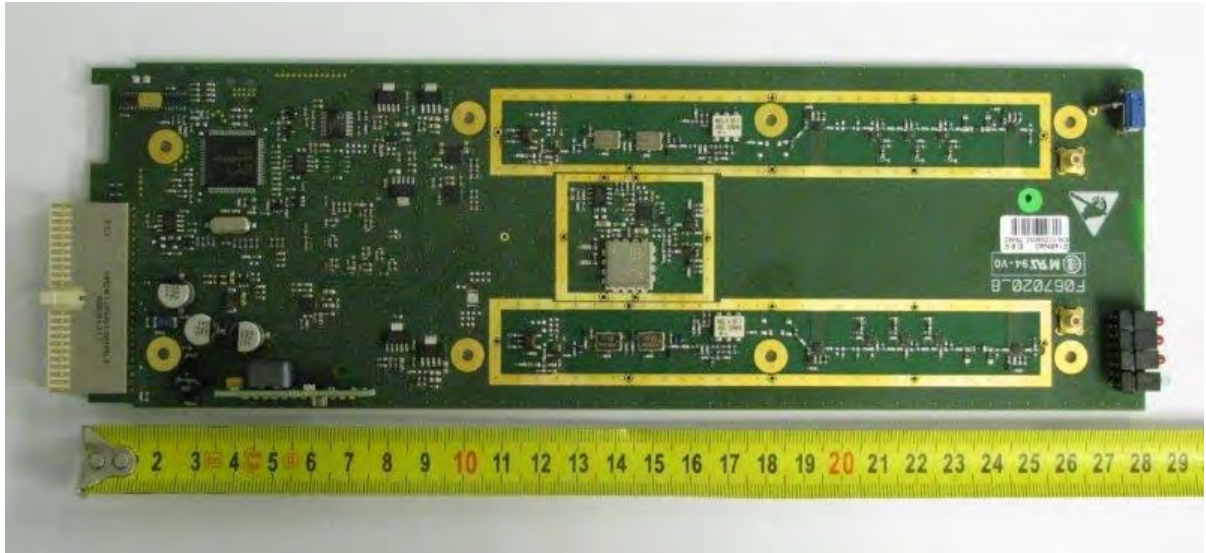
### 6. RRX

#### 6.1. FRONT PICTURE



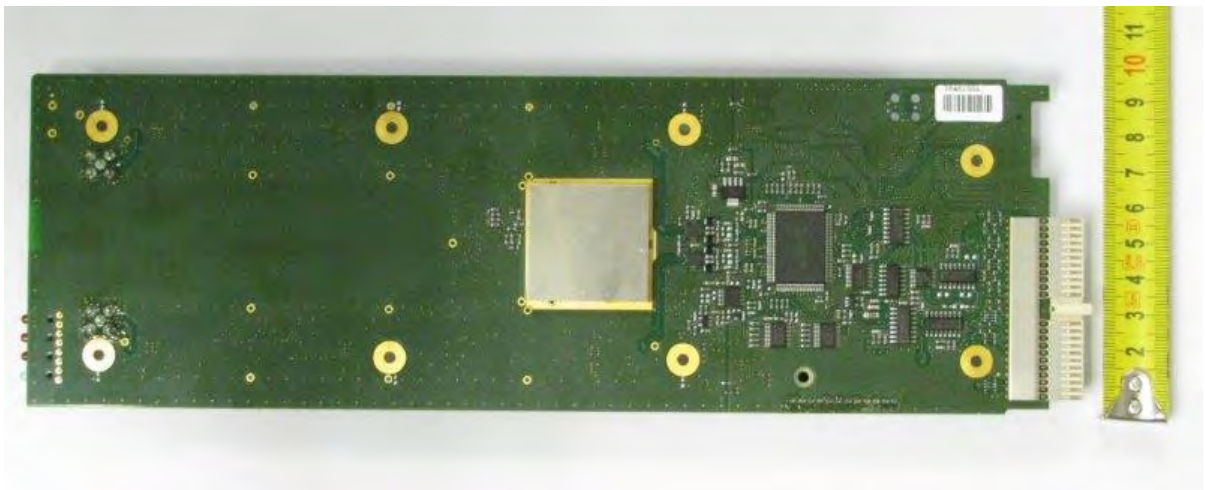
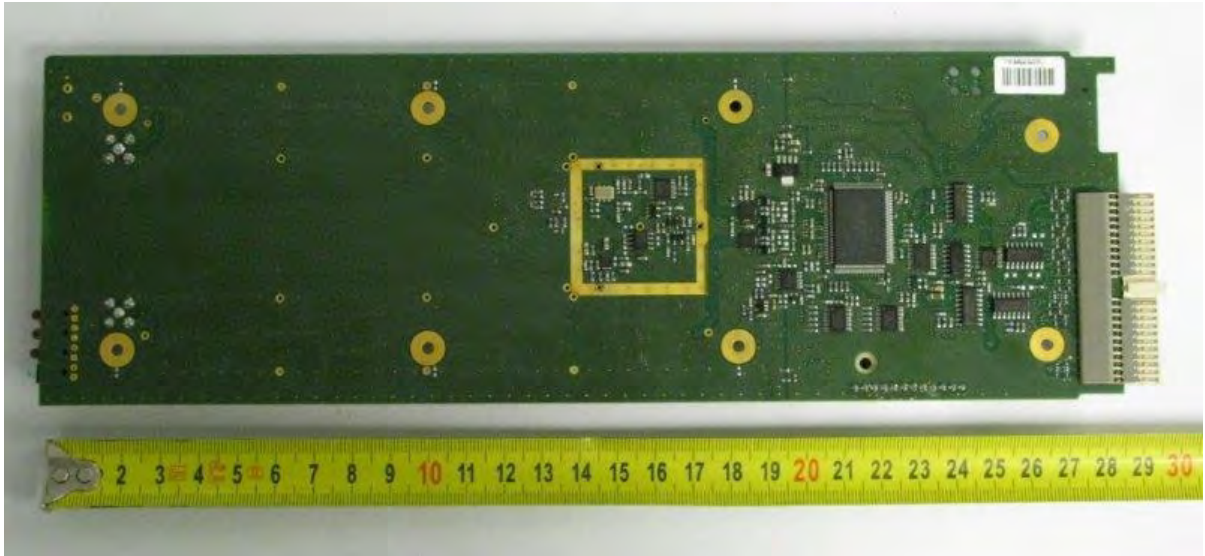


6.2. RRX PCB TOP LAYER PICTURES





6.3. RRX PCB BOTTOM LAYER PICTURES





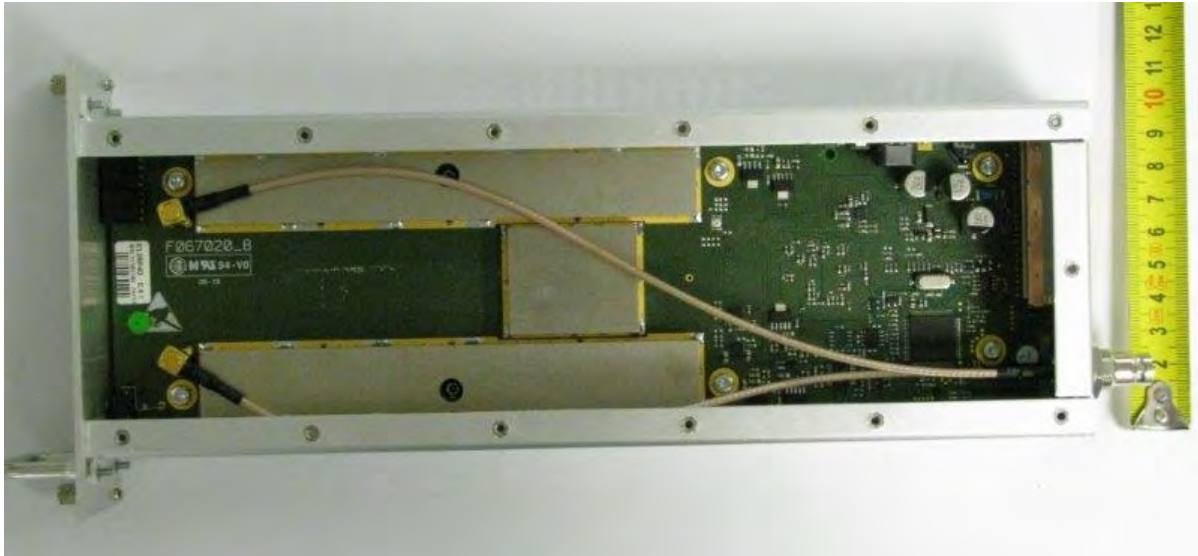
## DOSSIER BSR75

Code: D138X61PT

Date: 27/07/16

Page: 23 of 27

### 6.4. RRX GENERAL PICTURES





## DOSSIER BSR75

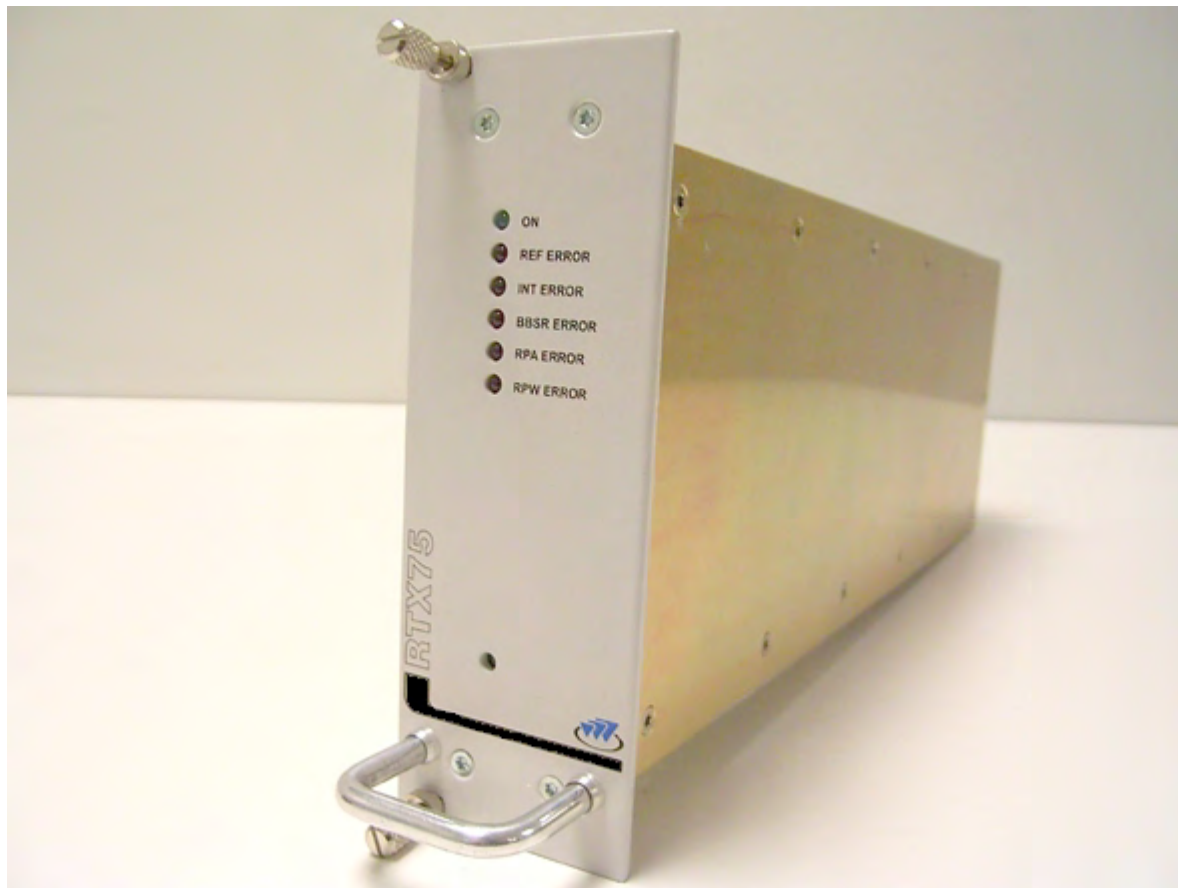
Code: D138X61PT

Date: 27/07/16

Page: 24 of 27

### 7. RTX75

#### 7.1. FRONT PICTURE





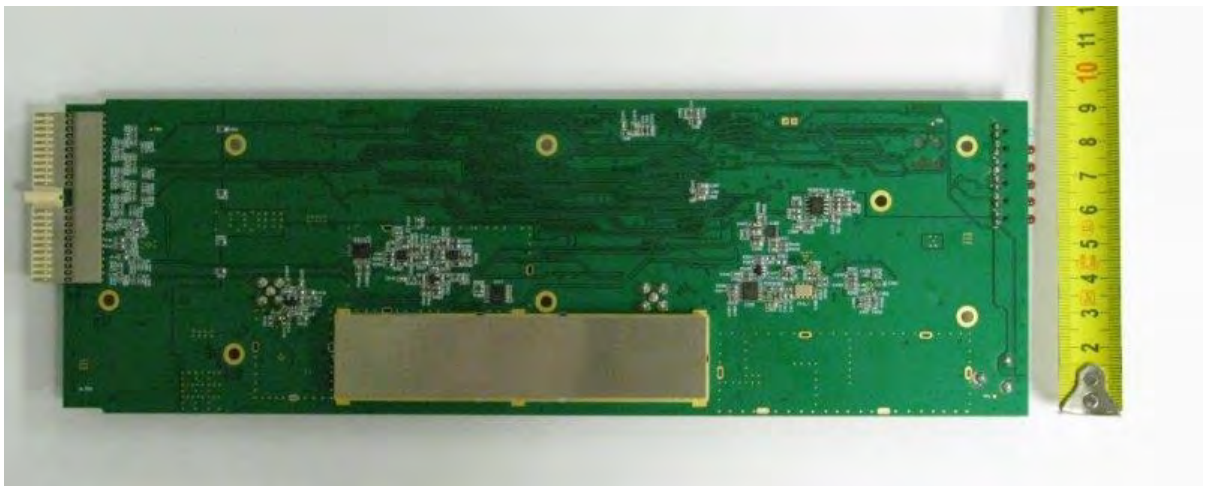
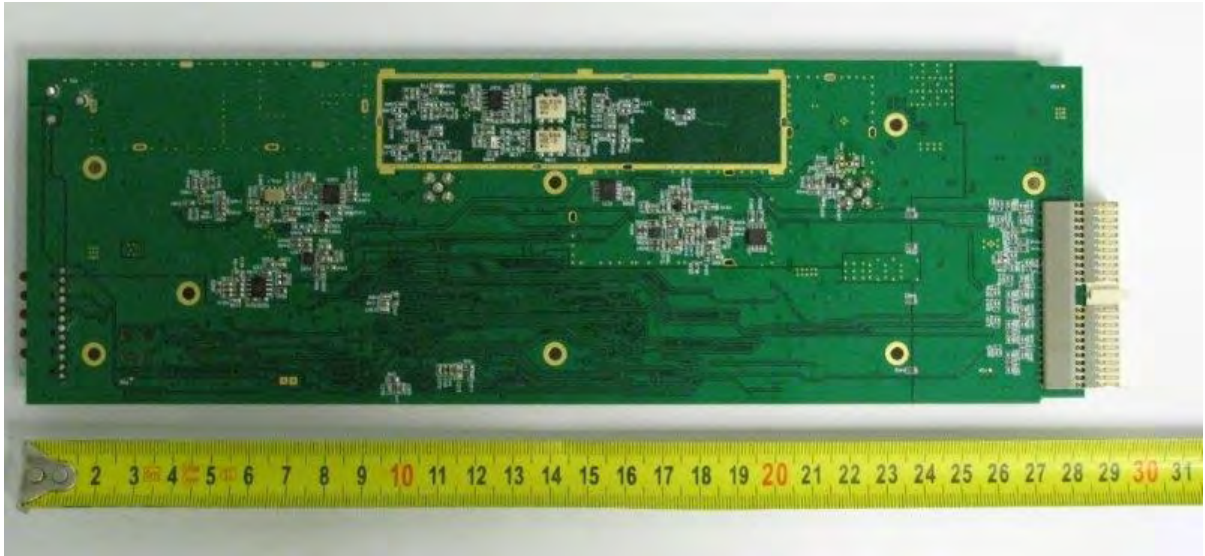


**7.2. RTX75 PCB TOP LAYER PICTURES**





**7.3. RTX75 PCB BOTTOM LAYER PICTURES**





## DOSSIER BSR75

Code: D138X61PT

Date: 27/07/16

Page: 27 of 27

### 7.4. RTX75 GENERAL PICTURES

