

# E10-2.4G-AGM Keypad User Manual

2016/02/01



Simple



Quick



Efficient



Confidential





1- Appearance Description

2-Preparation Work

3-System Connection

4-System Settings : Keypad Match, Set ID, Management








5- Voting Functions : Sign in, Single Vote, Split Voting , Name List Election

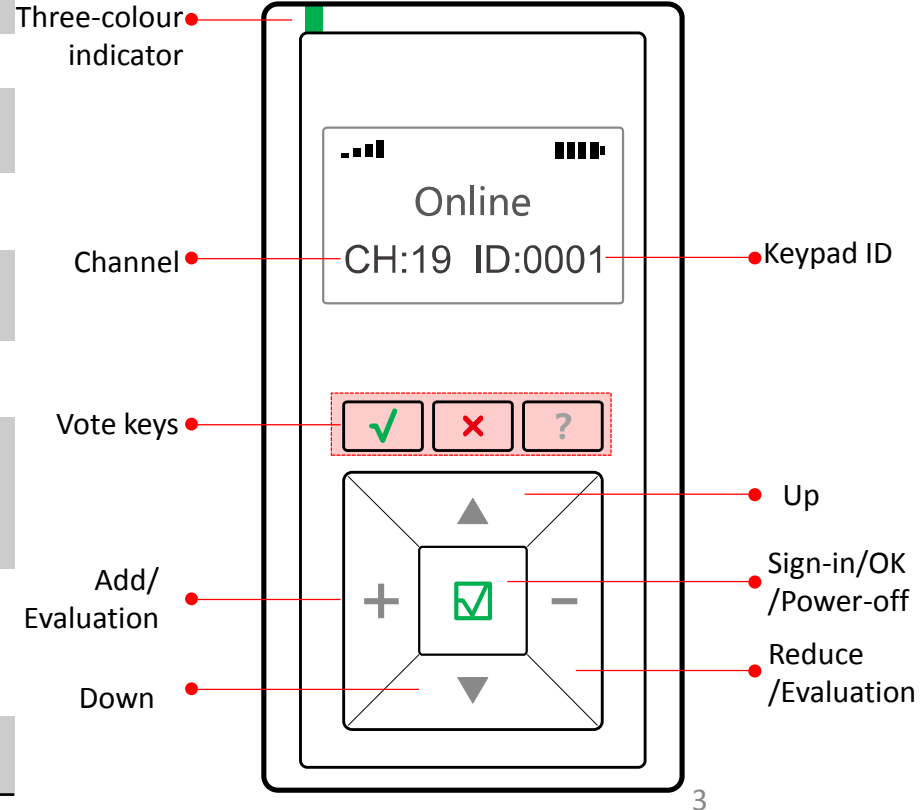
, Cumulative Voting ,Evaluation, Score, Choice

6-FAQ&Note



# 1- Appearance Description

Model	E10-2.4G(global)
Power on	Press  any key for 2 seconds to power on
Power Off	Press  for a while to power off
Sign in	Press  to sign in, LCD will show "Signed" if successfully sign in.
Single Vote	Press <b>✓ / ✗ / ?</b> (Yes/No/Abstain) to vote, and LCD will show "Received" if successfully submit.
Split Voting	Press <b>✓ / ✗ / ?</b> (Yes/No/Abstain) to split vote ; and LCD will show "Received" if successfully submit.
Single Choice	Press Up/Down to check one option and press  to submit
Elect ion Multiple Choice	Press <b>✓</b> to check the candidate/option ; Another <b>✓</b> press or <b>✗</b> press will uncheck this candidate/option ; Press  to confirm and submit ; Press Up/Down to view all the candidates/options.
Cumulative Voting	Press Up/Down to check the candidate ; Press <b>[+/-]</b> input the percentage of ballots or the number of ballots; Press <b>✓</b> to shift [%]/[Num] mode; press  to check and submit ;
Evaluation &Score	Press <b>+/-</b> to select Evaluation levels or add or reduce scores ; Press  to submit.





## 2-Preparation Work

Please confirm if keypads are with enough battery. If not, please plug the keypads in the charging box for at least 6 hours to get fully charged.



If keypad could not be charged normally, please replace the battery.



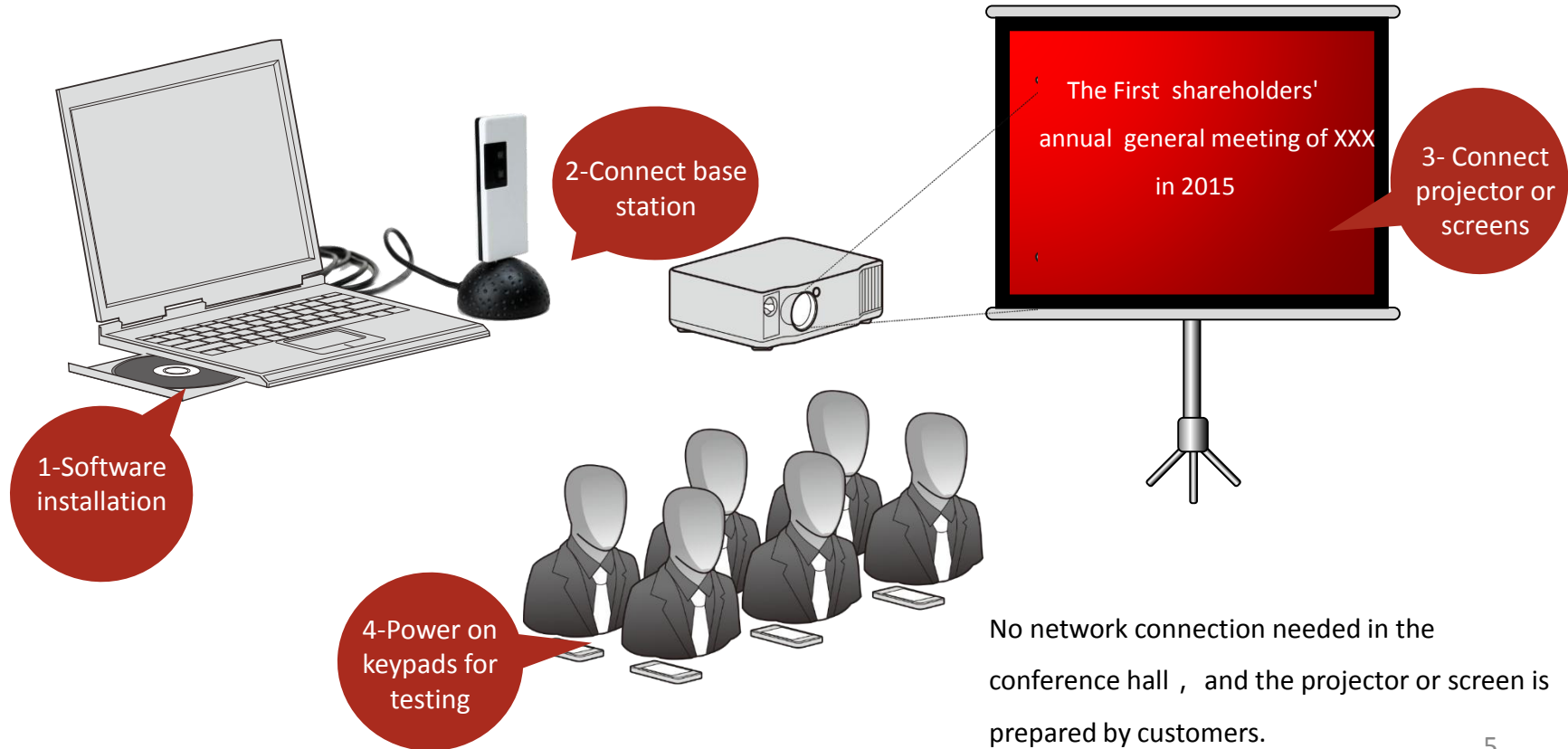
Mini USB port for charging : directly plug into charging box socket.

If charged when there is some battery left(the voltage of battery is  $>3.6V$ ), the indicator will be in red, and the indicator will turn green when complete charging.

If the keypad is in low battery when charged (the voltage of battery is  $<3.6V$ ), the indicator won't be on until the battery voltage charged to 3.6V in around 10 minutes, and the indicator will turn green when complete charging.



### 3-System Connection

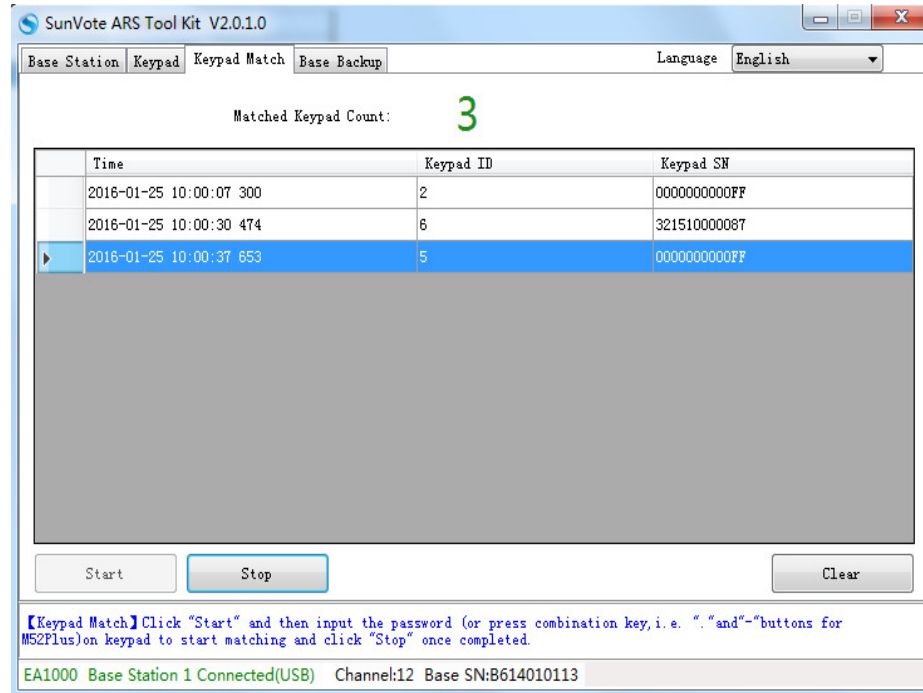




## 4.1-System Settings : Keypad Match

【Why do I need to match keypads?】 Keypad match is to create communication between keypads and base station, and make sure your system is isolated from other similar systems.

【How to do keypad match?】 Please run **SunVote ARS Tool Kit** , go to **Keypad Match** and click “**Start**” after the base is connected.



Press **V** key and **?** key at the same time for **3** seconds to finish matching.

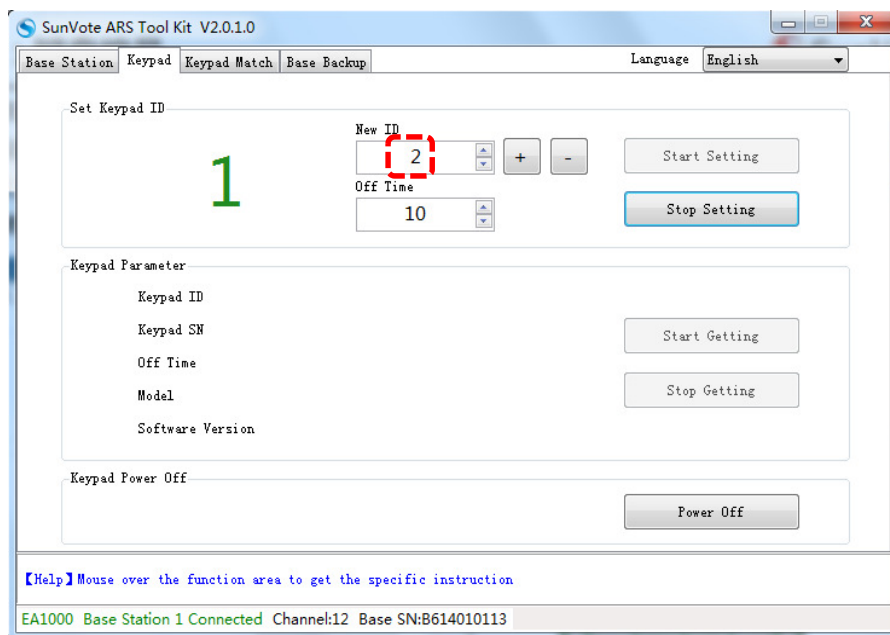
Keypad Match is done as factory default if you are end-user.



## 4.2- System Settings: Set ID

【 Why to Set ID 】 Keypad ID is convenient for device management, test and troubleshooting. ID should be unique

【 Set Single ID 】 Open Tool-SunVote ARS Tool Kit, click start Setting, and set the initial ID in the Keypad setting window, then press OK on the keypad. if set successfully, the ID number will be indicated on both keypad and toolkit, and **New ID** in **ARS Tool kit** will add 1 automatically, so please press another keypad to set its ID in ascending order.



ID setting is done as factory default if you are end-user.




## 4.3-System Settings: Management

1. **Vibration** : Use base station to control keypad vibration, once enabled, the keypad will vibrate when a key is pressed;
2. **Language** : Use base station to control all the keypads to switch language quickly ;
3. **Vote Revisable**: Use software to allow vote revisable or not. If set as revisable, people could modify their vote by returning or directly press another vote and then re-submit.
4. **Confidential mode** : Use software to enable or disable the confidential mode, once enabled, the keypad screen only show “Received”, the exactly vote value (Yes or No or Abstain) will be hidden for confidential.
5. **Submitting mode** : Use software to allow or not allow vote with a lack of elected number, eg: if we need to elect 5 of 10 candidates, votes with 3 candidates could be submitted if it is allowed, otherwise, only votes with 5 could be submitted.
6. **Ballot Restriction** : The restriction will be helpful when the ballot has a list to be voted or evaluated, eg, a restriction that in the ballot of 10, not more than 3 could be evaluated as very satisfied, otherwise keypad will show tips.
7. **LED indicator** : LED blinks slowly in green when keypad is online and stand by, blinks in green quickly when vote open ,and blinks slowly in blue when a key is pressed, and keeps green stable when data successfully submitted.
8. **Light to guide key pressing** : when open a vote, the corresponding keys will be lighten for guide, eg, open a vote with Yes/NO, only Yes/NO keys will be lighten.
9. **Anonymous Mode** : Set it via base station to hide or show keypad ID and channel. Once enabled, the keypad screen only show “Online” without keypad ID and channel for anonymous.



## 5.1- Voting functions : Sign in



When **sign in** function opens, keypad will have tips and light to guide key pressing, press  to sign in and screen will show "Signed" when successfully submitted.



## 5.2- Voting functions : Single Vote




When **Single Vote** function opens, keypad will have tips and light to guide key pressing, **press v/×/? (Yes/No/Abstain)** to vote and screen will show **"Received"** when successfully submitted. The title of resolution and confidential mode could be configured in the software, and resolution title supports as many as 7 Chinese characters or 14 letters.



## 5.3- Voting functions : Batch Vote/Proxy Vote




When a ballot has many resolutions to be voted at one time (Batch vote) or one person represents a few persons with different votes (Proxy vote), we can open **Batch Vote/Proxy Vote** function, keypad will have tips and light to guide key pressing, press **✓/×/? (Yes/No/Abstain)** to vote for a resolution or one person, and press **Up/Down** to vote for other resolutions or persons, press  to submit the final votes, and screen will show **“Received”** when successfully submitted.



## 5.4- Voting functions : Split Voting

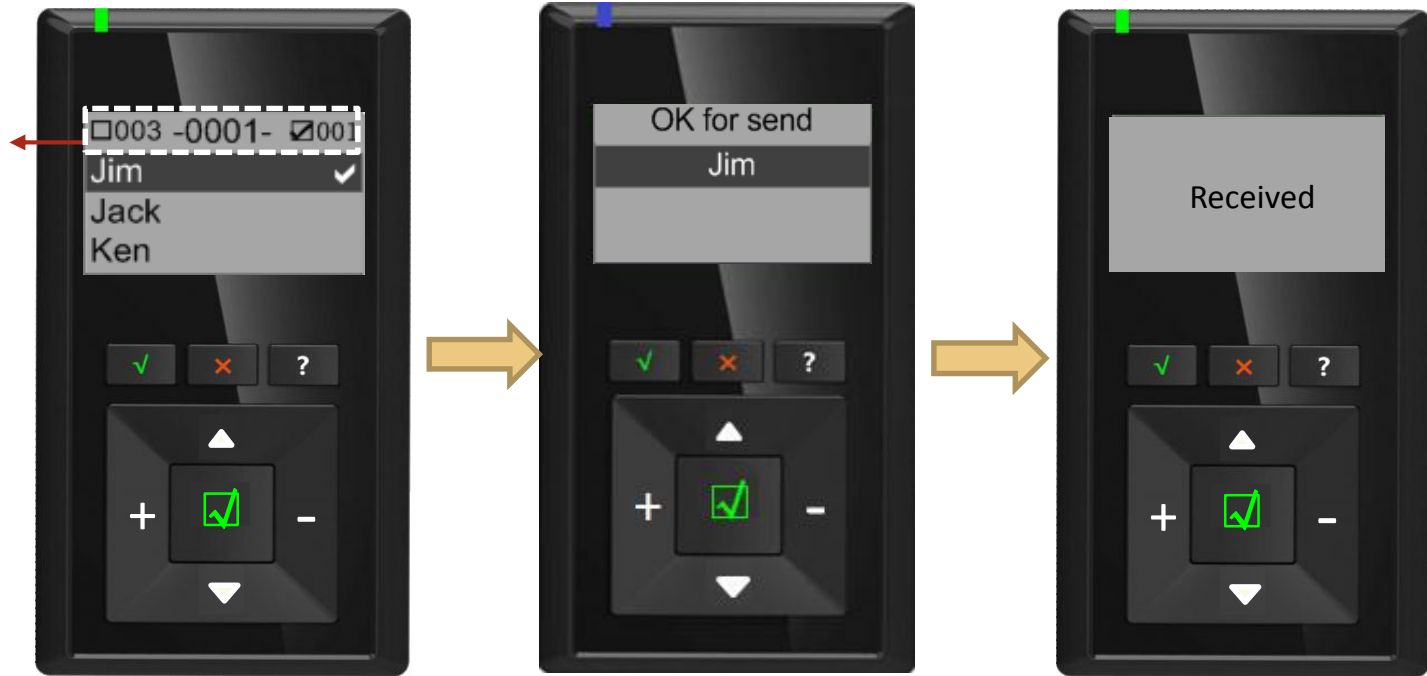


When a shareholder has several votes to distribute at one time or represents a few persons with different votes(Split voting), we can open **Split Voting** function, follow the guide on keypad, press **v/x/? (Yes/No/Abstain)** to vote for a resolution or one person, and press **Up/Down** to vote for **Yes/No/Abstain** , press **+/- (plus or minus)**to add or subtract the percentage /number of ballots , Press  submit the final votes, and screen will show **“Received”** when successfully submitted.



## 5.5- Voting functions : Name List Election

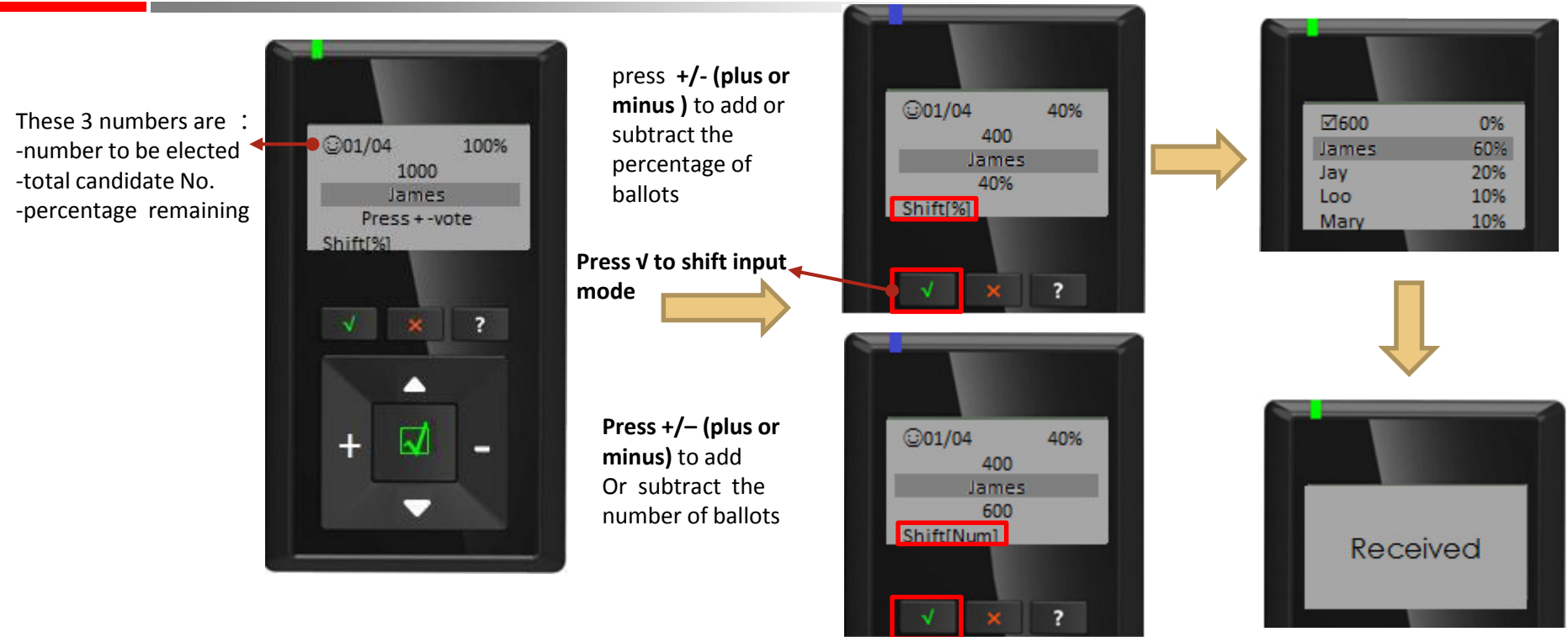
The 3 numbers are :  
-number to be elected  
-current candidate NO.  
- count of the selected



When start Election , follow the guide on keypad and press **✓** to check the candidate ; Another **✓** press or **✗** press will uncheck this candidate ; Press **Up/Down** to view all the candidates. Press **✓** to confirm and submit ,and screen will show “Received” when successfully submitted.




## 5.6- Voting functions : Cumulative Voting





## 5.7-Voting functions : Evaluation




When start **Evaluation**, follow the guide on keypad and **press +/-** to select evaluation levels and press  to submit, screen will show **"Received"** when successfully submitted. The title of resolution and confidential mode could be configured in the software, and resolution title supports as many as 7 Chinese characters or 14 letters.



## 5.8-Voting functions : Batch Evaluation




When a ballot has many evaluations to vote at one time (Batch Evaluation) or one person represents a few persons with different votes (Proxy vote), we can open **Batch Evaluation** function, follow the guide on keypad and **press +/-** to select level for one evaluation or one person, and press **Up/Down** to vote for other evaluations or persons, press  to submit the final result and screen will show **"Received"** when successfully submitted.



## 5.9-Voting functions : Score




When start **Score** , follow the guide on keypad and **press +/-** to add or reduce scores , and press  to submit, screen will show **"Received"** when successfully submitted. Currently supports integer score from 0 to 100, and the min/max and default value could be configured in software.



## 5.10-Voting functions : Single Choice



When start **Single Choice**, press **UP/Down** to select one option, and press  to submit, screen will show **"Received"** when successfully submitted.

The E10 keypad supports **10** options at most.



## 5.11-Voting functions : Multiple Choice



When start **Multiple Choice**, press **✓** to check one option, another **✓** press or **✗** press to uncheck the option. Press **Up/Down** to view all the options. Press **✓** to submit, screen will show “**Received**” when successfully submitted.

The E10 keypad supports **10** options at most.



Any Changes or modifications not expressly approved by the party responsible for compliance could void the user's authority to operate the equipment.

This device complies with part 15 of the FCC Rules. Operation is subject to the following two conditions: (1) This device may not cause harmful interference, and (2) this device must accept any interference received, including interference that may cause undesired operation.

RF exposure statement

This equipment complies with FCC radiation exposure limits set forth for an uncontrolled environment .The device has been evaluated to meet general RF exposure requirement. The device can be used in portable exposure condition without restriction.