

Bluetooth Transmitter & Receiver I2

User Manual

Contents:

- 1. Product Overview----- 2
- 2. Basic Operation ----- 3
- 3. How to use as a Bluetooth Transmitter (TX)----- 4
- 4. How to use as a Bluetooth Receiver (RX)----- 7
- 5. Charging-----10
- 6. LED Indicator -----11
- 7. Product Specification-----12
- 8. Attention and Q & A-----13

1.Product Overview

Working Status Indicator / Audio Mode Indicator / Connected Device Indicator / CODEC Indicator /

Pair Button / [Multi Function Button(MFB)/Charge Indicator] / Working Status Switch / Audio Mode Switch / 3.5mm Audio Port / SPDIF Input / SPDIF Input / Micro USB Charge Port

Package Contents:

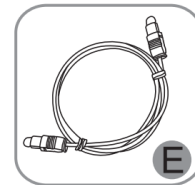
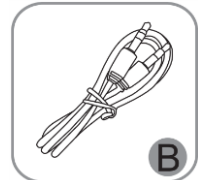
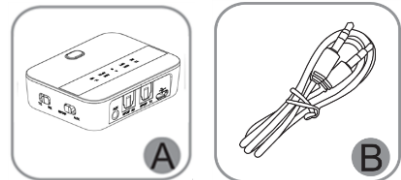
A. Bluetooth Transmitter & Receiver *1

B. 3.5mm Audio Cable *1

C. Micro USB Charging Cable *1

D. User Manual *1

E. Fiber Optic Cable *1



2.Basic Operation

Button	Function	Operation
MFB (Multi Function Button)	Power on	Long press for 3 seconds (TX)
		Long press for 2 seconds (RX)
	Power off	Long press for 2 seconds (TX/RX)

	Play/Pause	Short press to play or pause music during playing (RX) *Not work in TX status.
	Delete record pairing	Under power on/off, long press for 7 seconds, the pairing record would be deleted include RX's (TX) *Not work in RX status.
Pair button	Enter mode pairing	Under power on, short press to enter paring mode (Not work in Multi Point Connection) (TX/RX) (RX: RX LED fast flash; TX: TX LED fast flash)
	aptX™ HD on / off	Under power on, long press for 7 seconds to turn on/off *It will power on automatically
Working Status Switch	Switch working status between RX receiver and TX transmitter *When switching the TX/RX on the power on status, wait for the current status indicator and mode indicator to light up then switch to another status	
Audio Mode Switch	Short press to switch between AUX and Optical	

3. How to use as a Bluetooth Transmitter (TX)

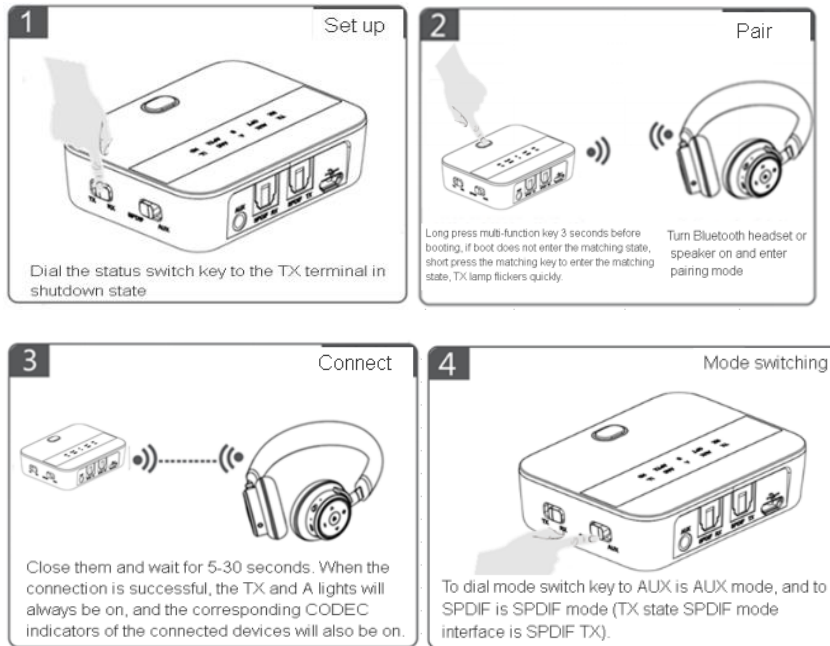
3.1 Bluetooth pairing and connection

- A. Under power off status, switch to TX side and long press MFB for 3 seconds to power on (Or power on then switch to TX side).
- B. Short press pair button to enter pairing mode with TX LED fast flash if doesn' t enter when power on.

C. Set your device (bluetooth headphone, speaker or receiver) to power on and pairing mode, with Red & Blue LED flash alternately or Blue LED fast flash.

D. Place I2 and your device close and wait for 5-30 seconds. TX, "A" and CODEC LED will turn on after connected.

E. Connect I2 and your phone with 3.5 mm audio cable, and could play music from your phone to the headphone or speaker.



1 Setting Under power off, switch working status to TX side.

2 Pairing Long press MFB for 3 seconds to power on, short press pair button to enter pairing mode with TX LED fast flash if doesn't enter when power on. Power on the bluetooth headphone or speaker and enter pairing mode.

3 Connection place I2 and your device close and wait for 5-30 seconds. TX, "A" and CODEC LED will turn on after connected.

4 Audio mode switch Switch audio mode to AUX side means AUX mode, SPDIF side means SPDIF mode (TX status is SPDIF TX)

3.2 Multi Point Connection

A. Follow 3.1 to connect with the first device, short press pair button to enter pairing mode with TX LED fast flash.

B. Power on the second device (bluetooth headphone, speaker or receiver) and enter pairing mode. Place them close and wait 5-30 seconds, I2 will connect two device with "A" and "B" LED turn on.



Note:

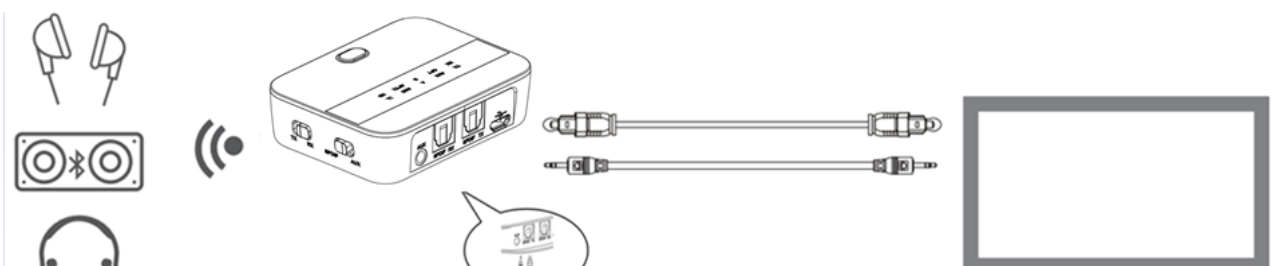
*Pls turn off I2 and turn on again, and try to reconnect or repair with two devices, when it could not connected with two devices at the first time.

*Multi point connection could compatible with most of the chipset solution at the market, except less of them.

*Single connection priority support aptX™ HD (connected device also support aptX™ HD). Two connections priority support aptX™ HD (connected devices also support aptX™ HD). Two connections priority support aptX™ low latency (connected devices also support aptX™ low latency). Two connections priority support aptX™ (connected devices also support aptX™). Two connections turn to SBC automatically if the CODEC are different.

3.3 TV Connection

Connect I2 and the TV with 3.5mm audio cable or fiber optic cable, and Bluetooth connect I2 with devices (Bluetooth headphone or speaker), and could transmit the audio from TV to the devices .



Notes:

1. Pls test the TV with wired headphone or check the TV's audio settings (Select 3.5mm output) to make sure the devices connect in the right way and play audio from the TV.
2. Pls connect the TV and SPDIF TX port with fiber optic cable when select the Toslink connection mode.

4. How to use as a Bluetooth Receiver (RX)

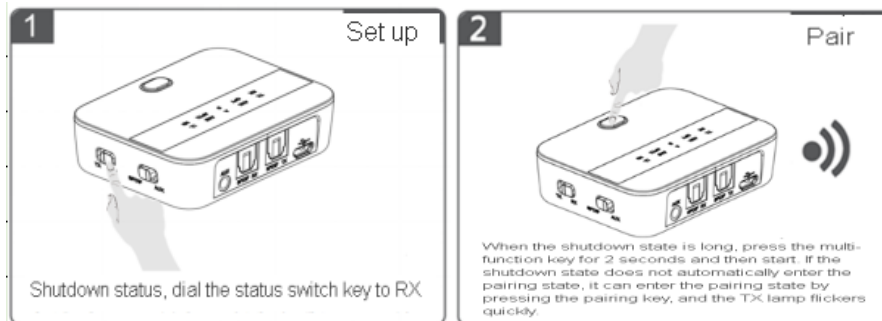
4.1 Bluetooth pairing and connection

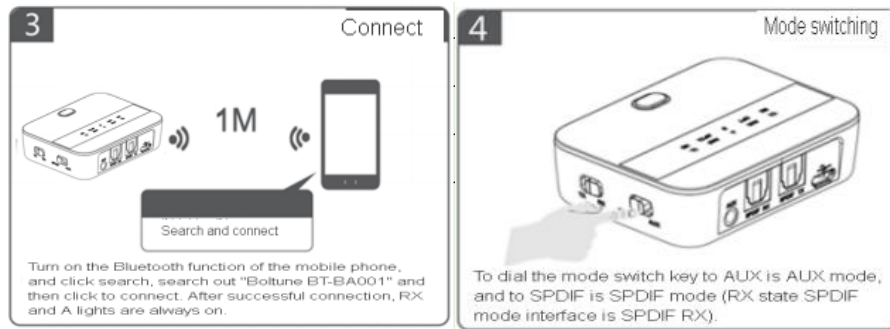
A. Under power off mode, switch to RX side and long press MFB for 3 seconds to power on (Or power on then switch RX side).

B. Short press pair button to enter pairing mode with RX LED fast flash if doesn't enter when power on.

C. Place I2 and your phone (pc, tablet) close, turn on the bluetooth function of the phone and connect "Boltune I2".

D. TX and "A" LED turn on after connected, the speaker can be played music from phone (PC or tablet) with 3.5mm audio cable or fiber optic cable.





1 Setting Under power off, switch working status to RX side.

2 Pairing Long press MFB for 2 seconds to power on, short press pair button to enter pairing mode with RX LED fast flash if doesn't enter when power on. Power on the bluetooth headphone or speaker and enter pairing mode.

3 Connection Turn on the bluetooth function of the phone, search and connect "Boltune I2". RX and "A" will turn on after connected.

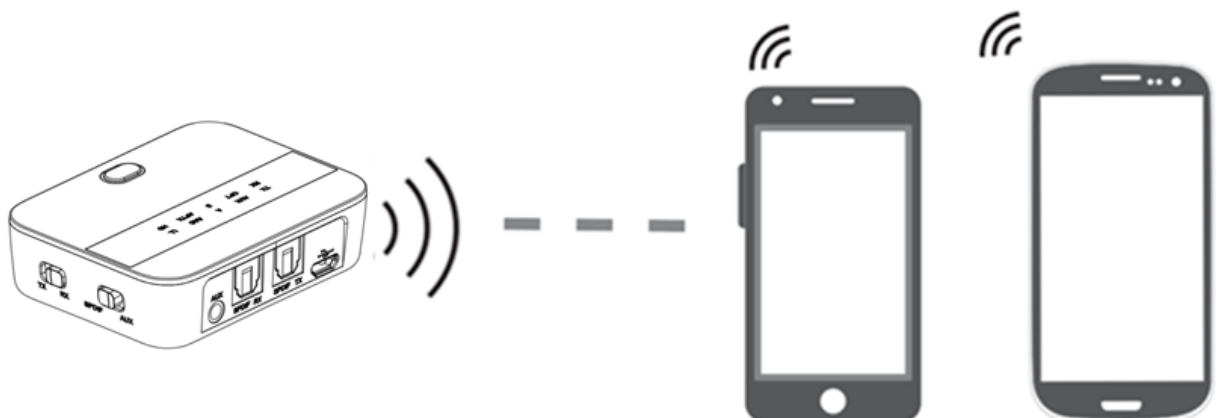
4 Audio mode switch Switch audio mode to AUX side means AUX mode, SPDIF side means SPDIF mode (RX status is SPDIF RX)

4.2 Multi Point Connection

A. Connect the first phone (pc, tablet).

B. Short press pair button to enter pairing mode with RX LED fast flash.

C. Turn on the bluetooth function of the second phone. search and connect "Boltune



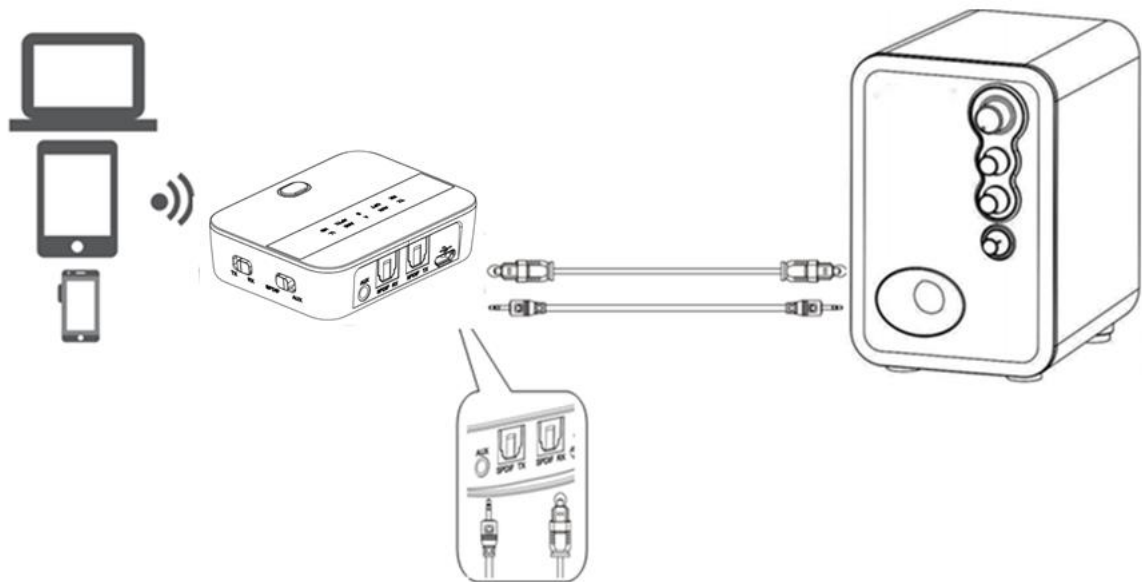
Note

*Only could play music from one phone when with two connections. Need to stop the first one's music then to play the other one's music.

*Priority support aptX™ HD for one connection(the connected device also support aptX™ HD), support CODEC according to the phone which playing music for two connections.

4.3 Speaker Connection

Connect I2 and Speaker with 3.5 mm audio cable or fiber optic cable, and bluetooth connect with phone (PC, laptop), play music from your phone to speaker.



Notes:

1. Pls test the speaker with 3.5 mm audio cable (connect phone) to see if workable, if could not play when connect with I2.

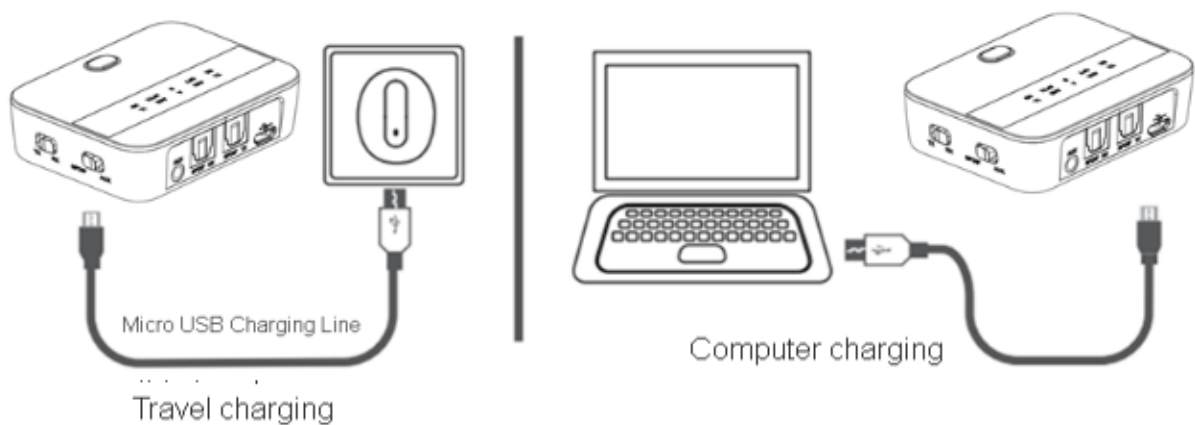
2. Pls insert to SPDIF RX port for Toslink connection.

5. Charging

Pls charging I2 when low battery with Red LED flash. LED turn off when full charged (about 2 hours).

Connection for charge

Connect I2 and power supply (charger , car charger , computer USB etc) with Micro USB cable.



Charging with Micro USB

Charging with PC

Notes:

1. Pls charge the I2 at least once every 2 months if without use.
2. Pls press "MFB" and connect with power supply to reset the item, when it dead during use.

6. LED Indicator

Status	LED Indicator
Power on/off	TX LED flash twice (TX status)
	RX LED flash twice (RX status)
Pairing	TX LED fast flash (TX status)
	RX LED fast flash (RX status)
Disconnected standby	Blue LED flash once every second (TX status)
	Blue LED flash twice every 3 seconds (RX status)
Connected standby	Solid blue LED (RX status)
Connected working	TX LED on when SBC mode, APTX LED on when aptx™ mode, LL LED on when aptx™low latency mode, HD LED on when aptx™ HD mode

	(TX status)
	RX LED on when SBC or AAC mode, APTX LED on when aptx™ mode, LL LED on when aptx™low latency mode, HD LED on when aptx™ HD mode, AAC LED on when AAC mode (RX status)
AUX	AUX LED on (TX/RX status)
SPDIF	OPT LED on (TX/RX status)
aptx™ HD on	TX flash once (TX status)
	RX flash once (RX status)
aptx™ HD off	TX flash twice (TX status)
	RX flash twice (RX status)
Connected with once device	Solid A LED (TX/RX status)
Multi Point Connection	Solid A and B LED (TX/RX status)
Delete pairing record	TX and low voltage LED flash twice (TX status)
low voltage	Red LED flash
Charging	Solid Red LED
Full charged	Red LED off

7. Product Specification

Bluetooth version	V5.0
Frequency range	2.402-2.480GHz
Bluetooth chipset	CSR 8675
Operation range	Class II, 10 meters
Bluetooth profile	A2DP, AVRCP
CODEC	RX: aptX™ HD, aptX™ low latency, aptX™, SBC, AAC

	TX: aptX™ HD, aptX™ low latency,, aptX™, SBC		
Battery capacity	3.7V, 620mAh lithium polymer battery		
Charging time	About 2 hours		
Standby time	RX status: about 60 hours		
Working time	AUX	RX	About 20 hours
		TX	About 23 hours
	SPDIF	RX	About 19 hours
		TX	About 25 hours
Operating temperature	-10-55°C		
Net weight	About 42g		
Dimension	69.6*51.9*19.6mm		

Notes:

1. Working time will be different depend on different working environment and CODEC.
2. Standby time will be same as working time on TX mode, as it will be working once connected.
3. CODEC depend on the connected devices and follow the turns as mention.

8. Attention and Q & A

Q. Power off automatically?

A: Without connect with any devices for more than 10 minutes the item will power off automatically in RX mode, except in TX mode.

Q. How to reconnect?

A: I2 will reconnect with paired devices when power on. If not , pls follow the 3.1 or 4.1 to pair & connect again.

Q . Password for connect?

A: Pls enter "0000" (four zero), "8888" (four eight), " 1111" (four one), or "1234" (one, two, three, four) for some devices which need password to connect .

Q. Could not power on or dead when connect?

A: Press MFB and connect with power supply to reset the item, and repower for use.

Q. Charging power supply?

A: Charging power supply: 5V, ≥ 500 mA. (Charger, car charger , computer USB etc).

NOTE: This equipment has been tested and found to comply with the limits for a Class B digital device, pursuant to part 15 of the FCC Rules. These limits are designed to provide reasonable protection against harmful interference in a residential installation. This equipment generates uses and can radiate radio frequency energy and, if not installed and used in accordance with the instructions, may cause harmful interference to radio communications. However, there is no guarantee that interference will not occur in a particular installation. If this equipment does cause harmful interference to radio or television reception, which can be determined by turning the equipment off and on, the user is encouraged to try to correct the interference by one or more of the following measures:

- Reorient or relocate the receiving antenna.
- Increase the separation between the equipment and receiver.
- Connect the equipment into an outlet on a circuit different from that to which the receiver is connected.
- Consult the dealer or an experienced radio/TV technician for help

Changes or modifications not expressly approved by the party responsible for compliance could void the user's authority to operate the equipment.

This device complies with Part 15 of the FCC Rules. Operation is subject to the following two conditions:

- (1) this device may not cause harmful interference, and**
- (2) this device must accept any interference received, including interference that may cause undesired operation.**