

# SMD CERAMIC ANTENNA

## Data Sheet

---

---

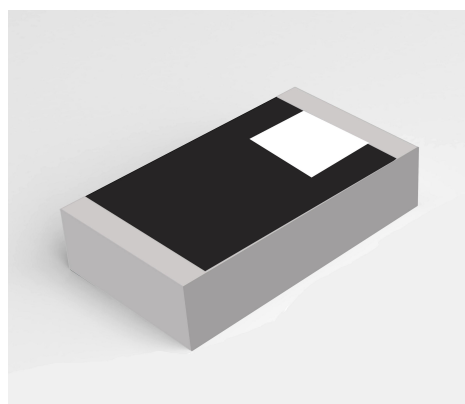
# CS-2450-31-L

For 2400-2480MHz

3.2x1.6mm [EIA1206]

## Feature

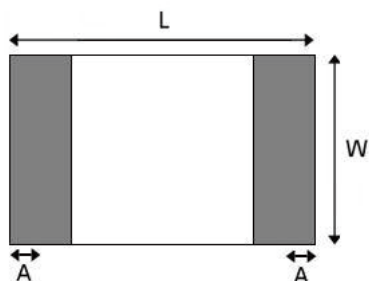
- Light weight, compact
- Wide bandwidth, low cost
- Built-in antenna with high gain



## Application

- Bluetooth
- IEEE802.11g/b
- Zigbee systems
- etc...

## Shapes And Dimensions Dimensions in mm



L	W	A	H
3.10±0.10	1.55±0.10	0.40±0.20	0.55±0.1

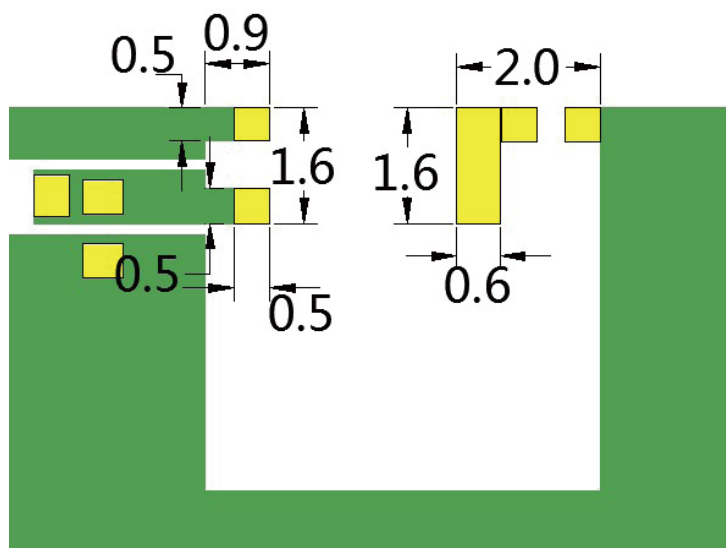


### Electrical Characteristics per line(TA=25°C)

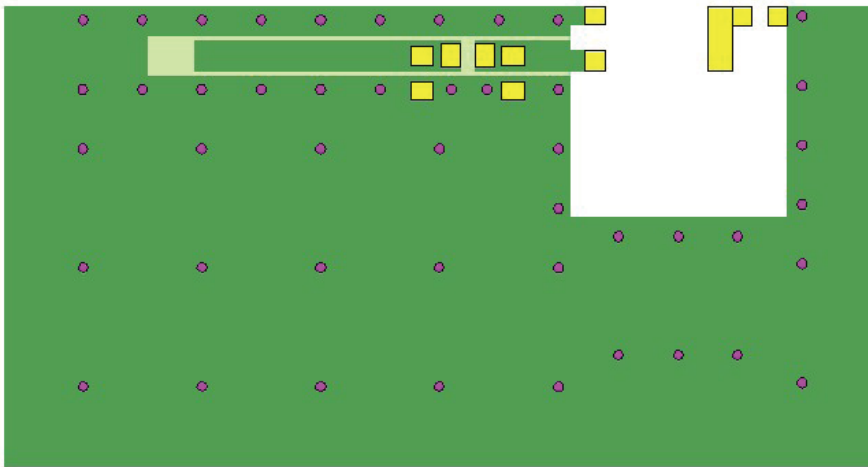
Parameter	Specification	Units
Frequency Band	2400~2480	MHz
Polarization	Line	
*Peak Gain	2.6	dBi
* Efficiency	72.30	%
Impedance	50	$\Omega$

### ■ Part Numbering System

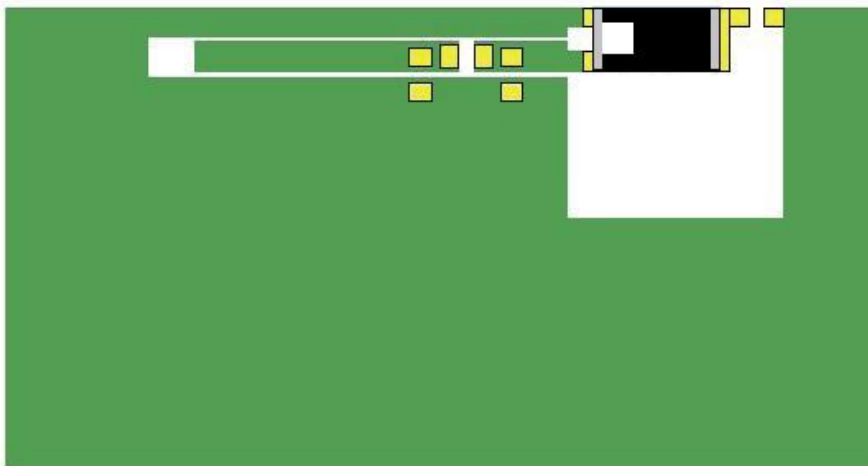
CS - 2450 - 31 - L  
 Material Frequency Size Type



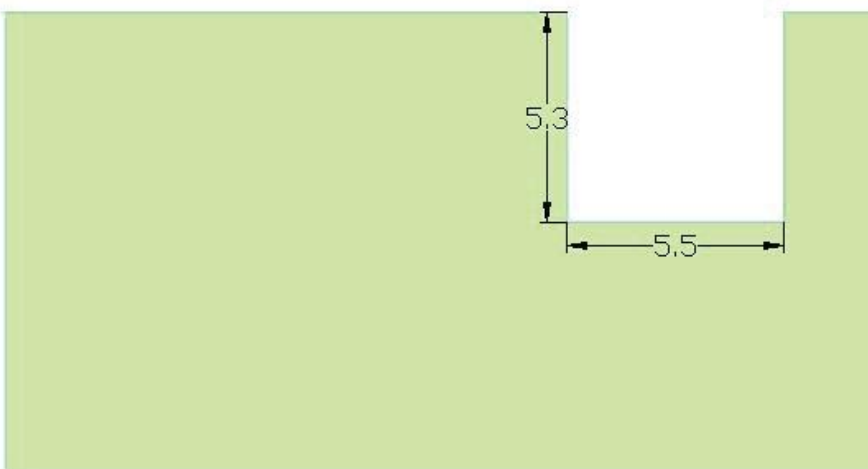
■ Evaluation Board



- ANT
- PAD
- TOP
- BOTTOM
- VIA



- ANT
- PAD
- TOP
- BOTTOM

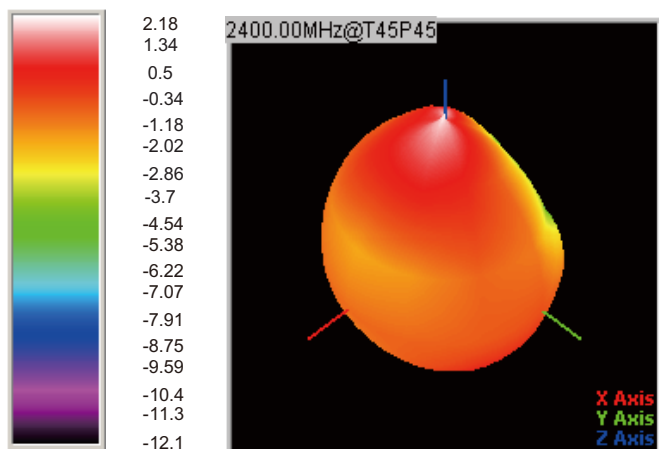


## ■ Radiation Patterns

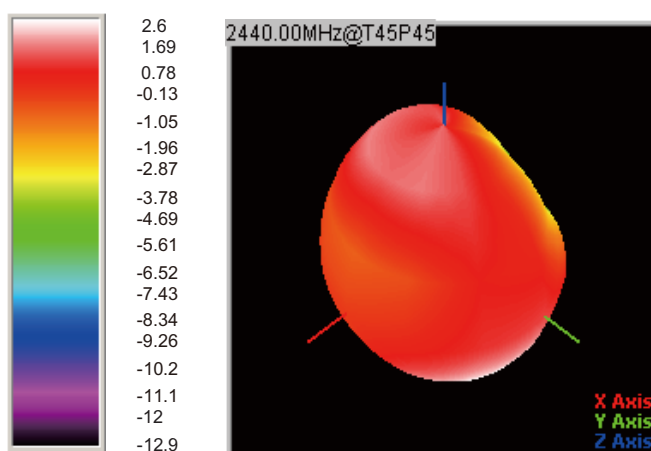
□ 2.4GHz WLAN BAND

⊙ 3D Gain Pattern (2400 MHz)

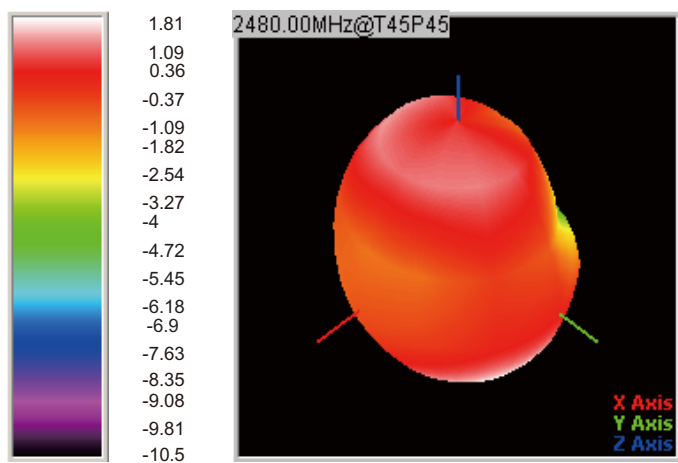
Units : dBi



⊙ 3D Gain Pattern (2440 MHz)

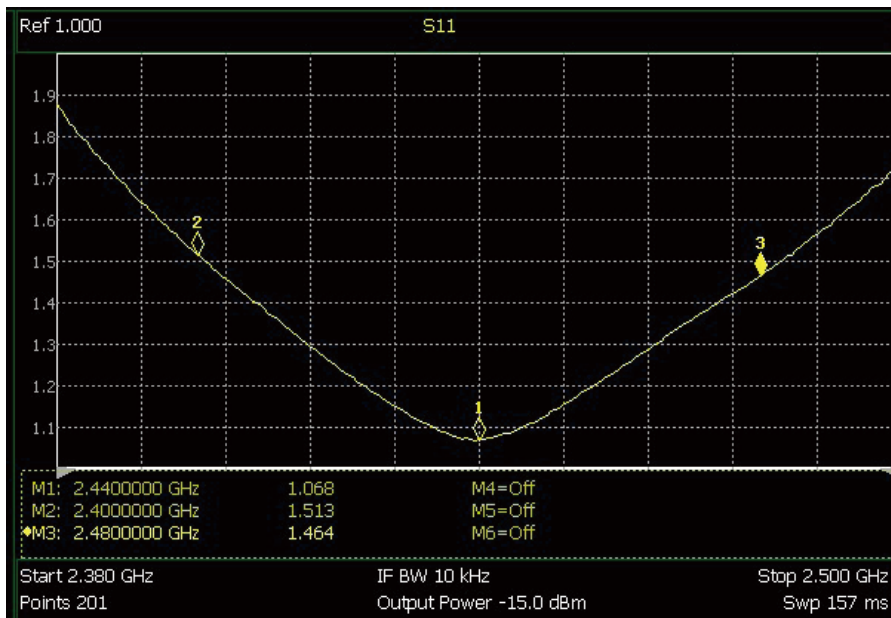
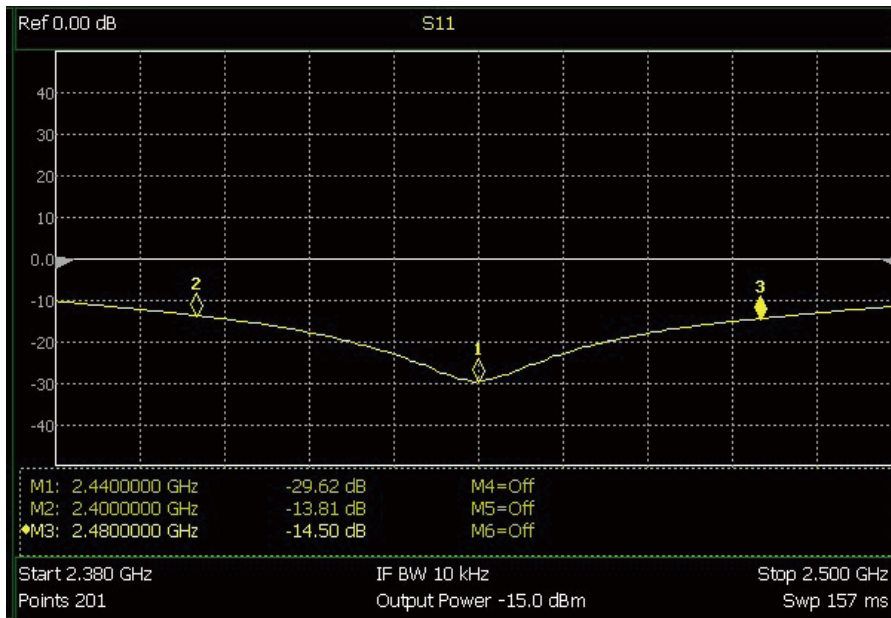


⊙ 3D Gain Pattern (2480 MHz)

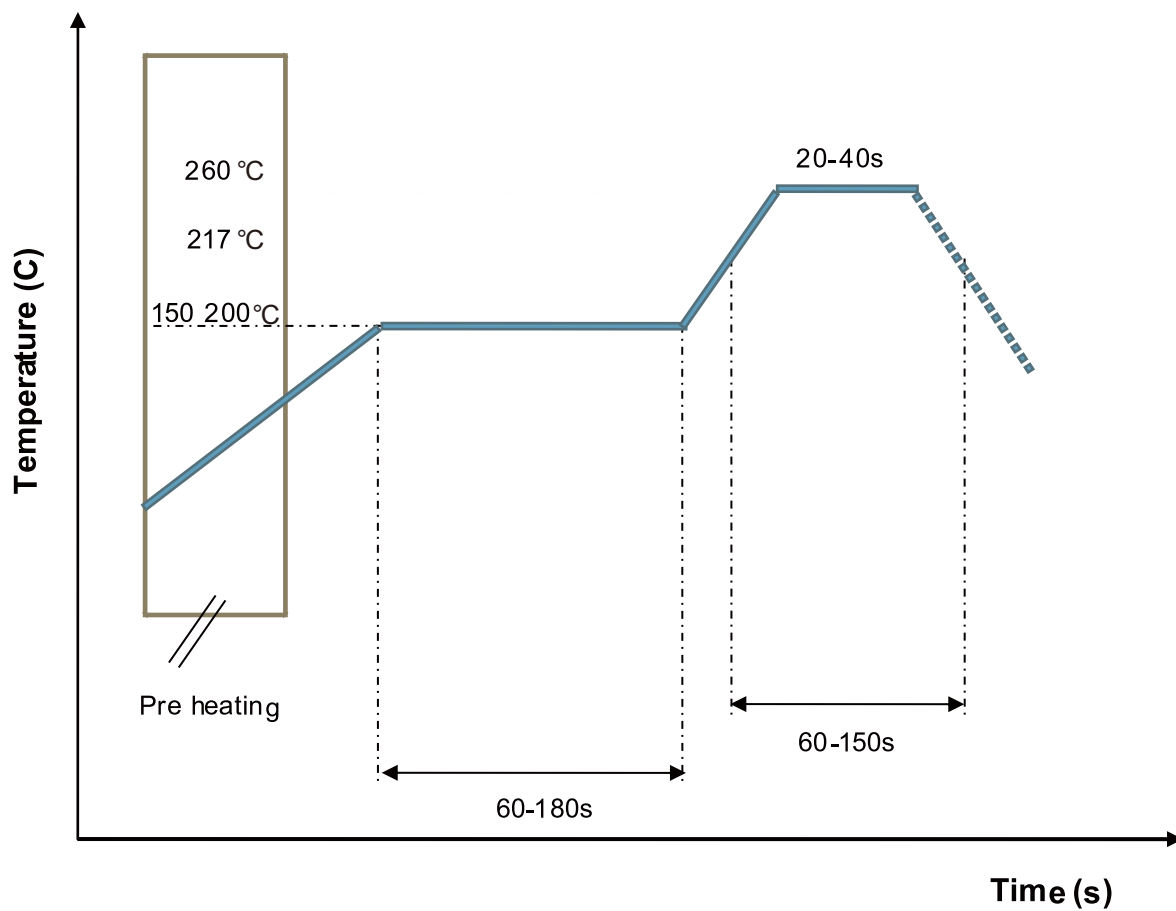


## ■ Frequency Characteristics

### □ EFFICIENCY AND VSWR

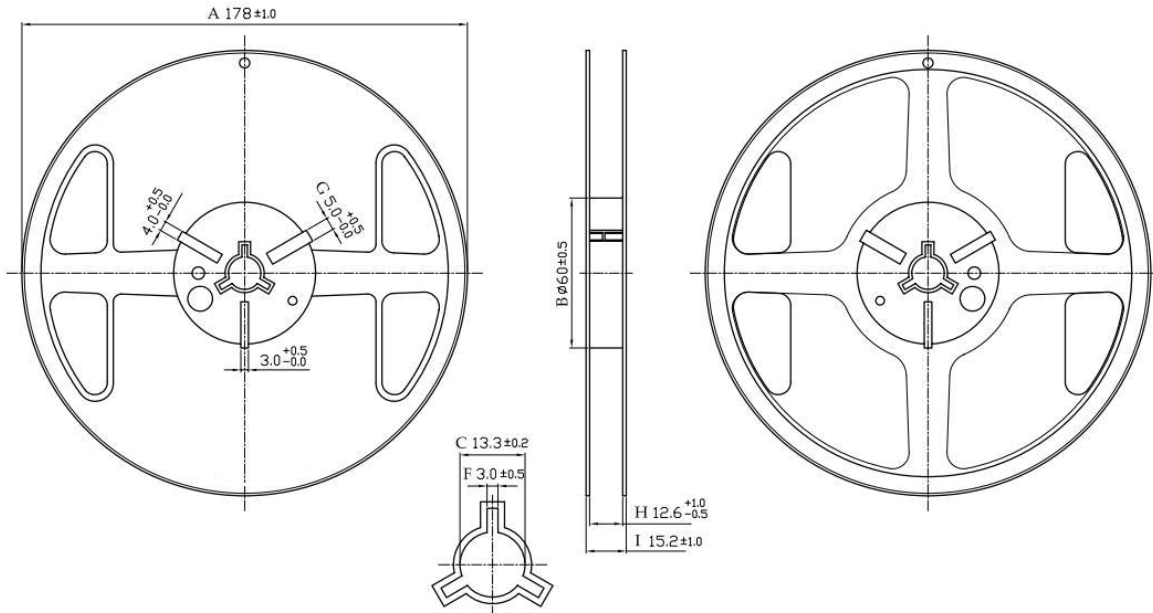


■ RECOMMENDED REFLOW PROFILE

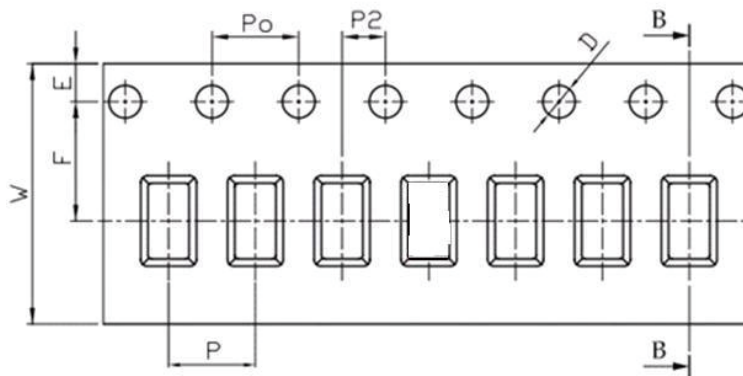


■ Packaging Style

□ REEL DIMENSIONS



□ TAPE DIMENSIONS



Feature	Specifications	Tolerances
W	8.00	±0.30
P	4.00	±0.10
E	1.75	±0.10
F	3.50	±0.10
P <sub>2</sub>	2.00	±0.10
D	1.50	+0.10 -0.00
P <sub>0</sub>	4.00	±0.10
10P <sub>0</sub>	40.00	±0.20

Quantity: 5000 pieces per 7 reel