

EUASOO

Wireless Transmitter& Receiver



Model : KH-26

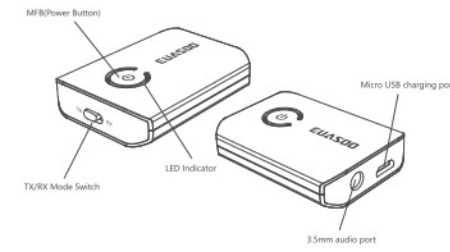
User Manual

Contents

1.Product Overview	2
2.Package contents	2
3.Product Specification	3
4.Basic Operation	4
4.1 Use as Transmitter	4
4.2 Use as Receiver	5
5.How to use	6
6.How to pairing	7
6.1 Pair in TX mode:	7
6.2 Pair in RX Mode	8
7.Pair with two devices at the same time	9
7.1 In TX mode	9
7.2 In RX mode	9
8.Care and maintenance	10

1

1. Product Overview



2.Packaging contents:

- Wireless Transmitter& Receiver x 1
- 3.5mm Audio Cable x 1
- USB Charging Cable x 1
- 3.5mm Female to 2 RCA Male Cable x1
- User Manual x 1



2

3. Product Specification

Item No.	BT1-016
Bluetooth Version	V5.0
Bluetooth Chipset	CSR BC8670
Operation Frequency	2.402GHz-2.480GHz
Working Time	About 8 hours (RX) About 8 hours (TX)
Charging Time	About 2 hours
Bluetooth Profile	A2DP AVRCP
Password for connection	0000, 1111, 1234, 8888
Audio Codec	TX: aptX™ Low Latency, aptX™, SBC RX: aptX™ Low Latency, aptX™, SBC, AAC
Range	33ft/10m
Battery Capacity	160 mAh Lithium polymer Battery / 3.7V
Charging Power	5VDC,100-240V AC adapter, ≥300MA
Operating Temperature	-10--55°C
Weight	About 14.5g
Dimension	46mm*33.2mm*9.7mm

3

4. Basic Operation

4.1 Use as Transmitter

Function	Operation
Power on	When power off, press and hold the power button for 2-3 seconds
Power off	When power on, press and hold the power button for 2-3 Seconds
Pairing	When powered on, press the power button twice to start Pairing
Mode switch	When power off, switch the TX mode and long press the power button for 3 seconds to power on
Reconnect to all connected devices	Short Press Power button to reconnect to all connected devices; If no connected after 12 seconds will auto in pairing mode.
Clear pair list	When power off, press and hold power button 7 seconds will clear all connected device information
Reset	When power on, press power button and charging will reset the device
Auto Power Off	Device will auto power off if battery lower than 3.1V
Low battery Alarm	Device will have low battery alarm every 3 minutes if battery lower than 3.3V
LED Indicators	Status
Solid Red LED	Charging
LED Off	Fully charged
Flashing Red and Blue	Pairing
Flashing Red	Low battery
Solid Blue LED	Successfully Paired
Flashing Blue (Every 1 Second)	Powered on but not paired with Bluetooth devices
Solid Blue LED	Paired but Standby

4

4.2 Use as Receiver

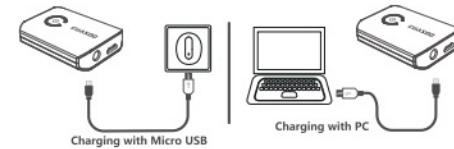
Function	Operation
Power on	When power off, press and hold the power button for 2-3 seconds
Power off	When power on, press and hold the power button for 2-3 Seconds
Pairing	When power on, press the power button twice to start pairing
Mode switch	When power off, switch the RX mode and long press the power button for 3 seconds to power on
Play/Pause	IN RX mode, Press the power button once to play/pause music
Reconnect to all connected devices	Short Press Power button to reconnect to all connected devices; If no connected after 12 seconds will auto in pairing mode.
Auto Power Off	Device will auto power off if battery lower than 3.1V
Low battery Alarm	Device will have low battery alarm every 3 minutes if battery lower than 3.3V
LED Indicators	Status
Solid Red LED	Charging
LED Off	Fully charged
Flashing Red and Blue	pairing
Flashing Red	Low battery
Solid Blue LED	Successfully Paired
Flashing Blue (Every 1 Second)	Powered on but not paired with Bluetooth devices
Solid Blue LED	Paired but Standby
Flashing Blue twice (Every 3 seconds)	Unpaired and Standby

5

5.How to use

Charging

- Connected the micro-USB end of the cable to the charging port of the bluetooth receiver.
- Plug the USB end of charging cable to a USB charging port or any active USB port.
- LED indicator will turn red when charging and will automatically turn off when fully charged.



Note:

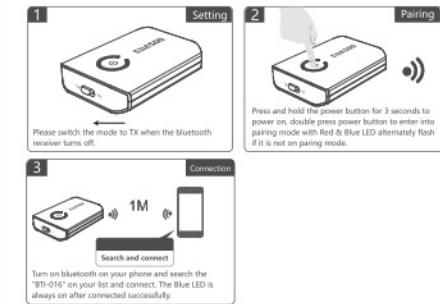
- Pls don't turn it on before fully charged, and we don't advise you use it when it is charging, it may affect the battery life.
- We recommend charging the unit for at least 2 hours before using it for the first time.

6

6. How to pairing

6.1 Pair in TX mode:

- Set the BT1-016 to TX mode and connect it to your audio transmitting device.
- Place your bluetooth audio receiving device within a 3 feet/1 meter range and set it to pairing mode.
- Press and hold the power button for 3 seconds and tap twice to enter pairing mode (If BT1-016 do not connect any device before it will auto in pairing mode after power on).

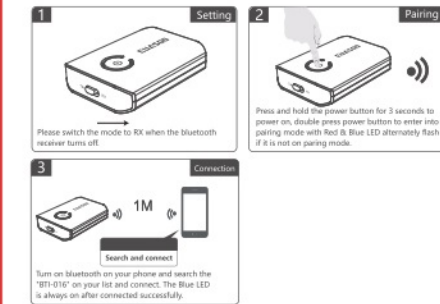


7

6.2 Pair in RX Mode

Press and hold the power button of the adapter for 3 seconds, it will start pairing.

- Activate the bluetooth function on your phone and search for the nearby Bluetooth devices:
For iOS: Setting > Bluetooth > On
For Android: Settings > Wireless & Networks > Bluetooth:On > Scan for devices
- Find "BT1-016" in the search results and tap on it to connect. Once connected, the LED indicator will turn solid blue.



Note:

The adapter enters pairing mode automatically when powered on for the first time. The original pairing memory will be cleared after a mode switch. It will automatically start pairing each time when powered on. If a PIN code is required for pairing, try 0000, 8888, 1111 or 1234. The adapter can remember two recently paired devices and will automatically, without going into pairing mode.

8

7. Pair with two devices at the same time

7.1 In TX mode:

The adapter is able to pair with two bluetooth stereo earphones/speaker at the same time.

- Follow the previous instructions in the "Pairing" selection to pair the BT1-016 with your first device.
- Turn off the "Bluetooth" function on your first device, tap the power button twice to pair and connect to your second device.
- Turn on the bluetooth function on your first device. In approximately 12 seconds, the first device will automatically connect in.

Notes:

When you pair with two devices, both can play music at the same time. The adapter will automatically re-pair when powered on.

7.2 In RX mode:

- The adapter is able to pair with two bluetooth devices at the same time.
- Follow previous instructions in the "pairing" section to pair the BT1-016 with your first device. Disable the Bluetooth function on your first device. Tap the power button twice to pair with the second device.
 - Turn on the bluetooth of the first device, now BT1-016 adapter is successfully paired with both two devices.

Notes:

Only one device can play music at any time. You have to stop the music on one device to play on the other. The adapter will automatically re-pair when powered on. When connecting a phone, the Bluetooth receiver cannot be used when answering and making a call.

9

8. Care and maintenance

Keep the adapter away from heat and humidity.

Do not expose the adapter to direct sunlight or extreme heat.

Do not try to take the adapter apart. It may cause serious damage.

Do not drop or knock the adapter on hard surfaces as it damages the interior circuit.

Do not use chemicals or detergents to clean the product.

Do not scrape the surface with sharp objects.

FCC STATEMENT :

This device complies with Part 15 of the FCC Rules. Operation is subject to the following two conditions:

(1) This device may not cause harmful interference, and

(2) This device must accept any interference received, including interference that may cause undesired operation.

Warning: Changes or modifications not expressly approved by the party responsible for compliance could void the user's authority to operate the equipment.

NOTE: This equipment has been tested and found to comply with the limits for a Class B digital device, pursuant to Part 15 of the FCC Rules. These limits are designed to provide reasonable protection against harmful interference in a residential installation.

10

This equipment generates uses and can radiate radio frequency energy and, if not installed and used in accordance with the instructions, may cause harmful interference to radio communications. However, there is no guarantee that interference will not occur in a particular installation. If this equipment does cause harmful interference to radio or television reception, which can be determined by turning the equipment off and on, the user is encouraged to try to correct the interference by one or more of the following measures:

Reorient or relocate the receiving antenna.

Increase the separation between the equipment and receiver.

Connect the equipment into an outlet on a circuit different from that to which the receiver is connected.

Consult the dealer or an experienced radio/TV technician for help.

Consult the dealer or an experienced radio/TV technician for help.

Consult the dealer or an experienced radio/TV technician for help.

Consult the dealer or an experienced radio/TV technician for help.

Consult the dealer or an experienced radio/TV technician for help.

Consult the dealer or an experienced radio/TV technician for help.

Consult the dealer or an experienced radio/TV technician for help.

Consult the dealer or an experienced radio/TV technician for help.

Consult the dealer or an experienced radio/TV technician for help.

Consult the dealer or an experienced radio/TV technician for help.

Consult the dealer or an experienced radio/TV technician for help.

Consult the dealer or an experienced radio/TV technician for help.

Consult the dealer or an experienced radio/TV technician for help.

Consult the dealer or an experienced radio/TV technician for help.

Consult the dealer or an experienced radio/TV technician for help.

Consult the dealer or an experienced radio/TV technician for help.

Consult the dealer or an experienced radio/TV technician for help.

Consult the dealer or an experienced radio/TV technician for help.

Consult the dealer or an experienced radio/TV technician for help.

Consult the dealer or an experienced radio/TV technician for help.

11