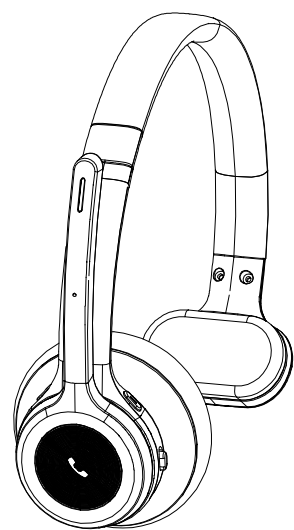


Bluetooth Headset K11



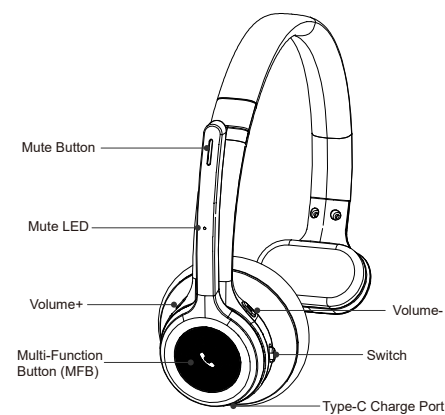
User Manual

Catalog

1. Product Overview	02
2. Basic Operation	03
3. Bluetooth Pairing and Connection	04
4. LED Indicator	05
5. Charging	05
6. Product Specification	06
7. Attentions and Q & A	07

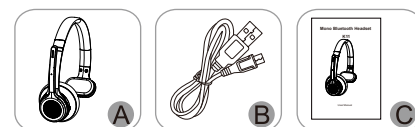
-01-

1. Product Overview



Packing list:

- A. Bluetooth Headset K11 x 1
- B. Type-C charge cable x 1
- C. User manual x 1



-02-

2. Basic Operation

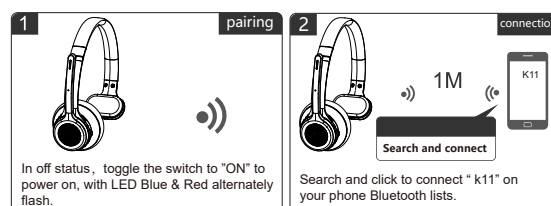
Button	Function	Operation Instruction
MFB	Power On	In off status, toggle the switch to "ON" to power on.
	Power Off	In on status, toggle the switch to "OFF" to power off.
	Redial A Call	In connected standby/playing music mode, double press MFB to dial the last call.
	Voice Dialing	In connected standby/playing music mode, long press MFB for 1 second then release.
	Answer a call	When a call incoming, short press to answer.
	Hang up a call	When during a call, short press to hang up.
	Reject a call	When a call incoming, long press for 1 second to reject a call.
	Play / Pause	Short press when play music.
	Three-way calling function	Call coming during call, short press the MFB to answer the new call and hang up the current call. Call coming during the call, double press the MFB to answer the new call and keep the current call. Call coming during the call, long press the MFB for 1 second to reject the new call. When you are on a three-party call, double press the MFB to switch audio between the current call and the keep call.
	Volume +	Volume Up
Next Song		Long press for 1 second.
Volume -	Volume Down	Short press.
	Previous Song	Long press for 1 second.

-03-

Mute Button	Microphone mute	When during a call, short press button to mute, press again to cancel.
Combination Button	Clear Matching Records	In on status(it cannot be cleared during a call), press the "MFB" and "Volume-" for 5 seconds.

3. Bluetooth Pairing and Connection

- A. In off status, toggle the switch to "ON" to power on, with LED Blue & Red flash alternately.
- B. Search and click to connect "K11" on your phone Bluetooth lists, the phone shows connected, now you can play music from phone to headphone.
- C. You can press MFB / Volume+ / Volume- / Microphone Mute Button on the Bluetooth headset to control the answer/hang up a call and play/pause of the music, next and previous song, volume up and down, microphone mute and so on.



-04-

4. LED Indicator

Mode	LED Indicator
Power on	Blue LED flash 2 times
Power off	Red LED flash 2 times
Pairing mode	Red & Blue LED flash alternately
Connected standby mode	Blue LED flash once every 10 seconds
Playing Music	Blue LED flash once every 10 seconds
Talking	Blue LED flash once every 10 seconds
Delete pairing record	Blue and Red LED is on for 1 second at the same time
Charging	Solid Red LED
Full charged	Solid Blue LED
Low battery	Red LED flash

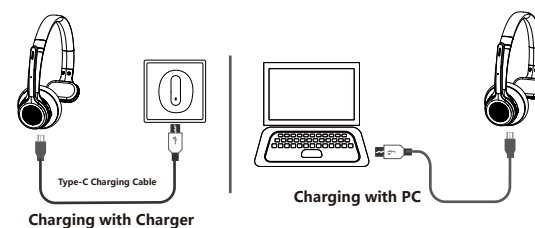
5. Charging

Please charge the K11 at once when the Red LED flashes. Charging time is about 2 hours. Solid Blue LED when full charged.

Charge Connections

Please connect to the K11 charging port through the Type-C end of Type-C charging cable, USB end to the charger(can be used as car charger, travel charger, computer USB, etc.).

-05-



*Note: Please charge the K11 at least one time every 2 months when don't use it.

6. Product Specification

Bluetooth Version	Bluetooth V5.4
Bluetooth Chipset	BT8925B2
Operation Range	10 meters
Bluetooth Protocols	HSP, HFP, AVRCP, A2DP
CODEC Code	SBC AAC
Battery Capacity	300mAh/3.7V
Charging Time	About 2 hours
Music Time	About 45 hours(70% Volume)
Talking Time	About 35 hours(70% Volume)
Stand-by Time	About 300 hours
Headset Net Weight	About 101.6g
Headset Dimension	178*168*68mm

-06-

* The above data are all from SKY WING laboratory, and the actual use time, environment and music will be different.

7. Attentions and Q & A

A. How to reconnect and operation when failed to reconnect?

When K11 connected with your mobile phone successfully at the first time, it will search and reconnect the paired device automatically when power on, if failed, you need to pair K11 again.

B. How to delete paired records?

In state-on mode(no talking), long press the MFB and Volume - Button for 5 seconds to clear the pairing record. The indicator Blue and Red LED is on for 1 second at the same time that means the pairing record has been cleared, and K11 will not connect the connected device. When there are various connection problem, try clearing the pairing record firstly.

C. What's the password for pairing?

Some connection devices require password for pairing, please try 0000 or 8888 or 1111 or 1234.

D. What devices could charge for the headphone?

Any car charger, power bank, PC etc which meet DC 3.7V, charging current more than 300mA could be charge for K11.

-07-

NOTE: This equipment has been tested and found to comply with the limits for a Class B digital device, pursuant to part 15 of the FCC Rules. These limits are designed to provide reasonable protection against harmful interference in a residential installation. This equipment generates, uses and can radiate radio frequency energy and, if not installed and used in accordance with the instructions, may cause harmful interference to radio communications. However, there is no guarantee that interference will not occur in a particular installation. If this equipment does cause harmful interference to radio or television reception, which can be determined by turning the equipment off and on, the user is encouraged to try to correct the interference by one or more of the following measures:

- Reorient or relocate the receiving antenna.
- Increase the separation between the equipment and receiver.
- Connect the equipment into an outlet on a circuit different from that to which the receiver is connected.
- Consult the dealer or an experienced radio/TV technician for help

Changes or modifications not expressly approved by the party responsible for compliance could void the user's authority to operate the equipment.

This device complies with Part 15 of the FCC Rules. Operation is subject to the following two conditions:
(1) this device may not cause harmful interference, and (2) this device must accept any interference received, including interference that may cause undesired operation.

-08-

SIZE: 85x120MM

材质: 80g铜版纸单黑印刷, 过哑油,

手风琴页折叠