

SMD CERAMIC ANTENNA

Data Sheet

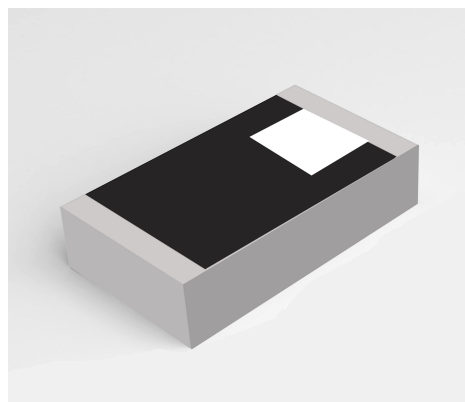
CS-2450-31-L

For 2400-2484MHz
3.2x1.6mm [EIA1206]

SHENZHEN CSCURVE TECHNOLOGY CO., LTD.

特征 Feature

- 重量轻, 结构紧凑
Light weight, compact
- 宽带大, 低成本
Wide bandwidth, low cost
- 高增益内置天线
Built-in antenna with high gain

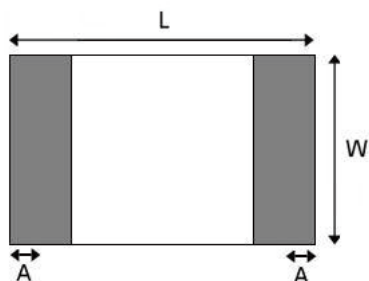


应用 Application

- 蓝牙技术Bluetooth
2.4GHz频段 IEEE802.11g/b
- 齐格比系统
Zigbee systems
- 其它etc...

形状和尺寸(单位: mm)

Shapes And Dimensions Dimensions in mm



L	W	A	H
3.10±0.10	1.55±0.10	0.40±0.20	0.55±0.1

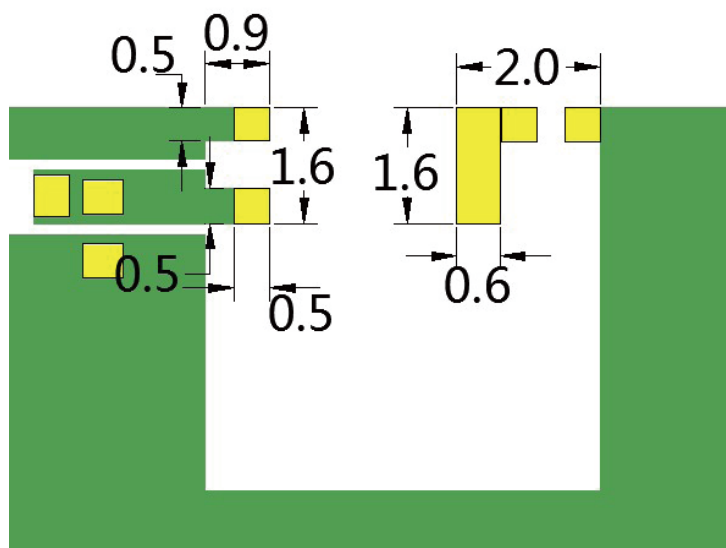


电气特性 Electrical Characteristics per line(TA= 25°C)

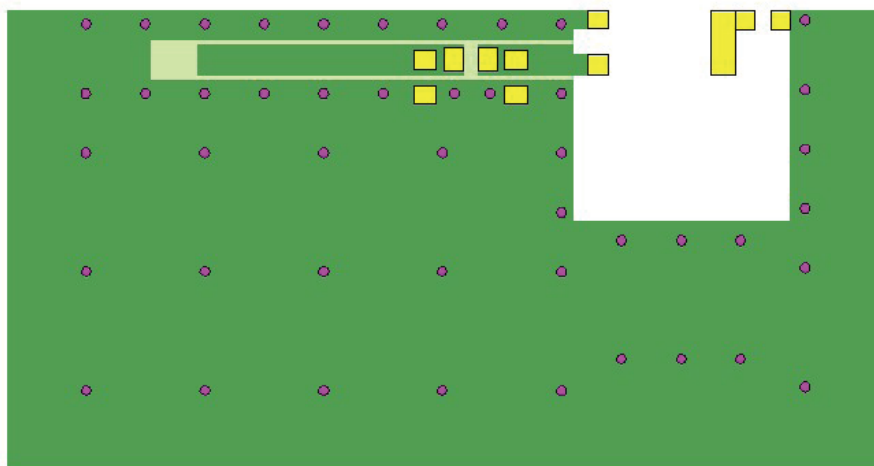
参数Parameter	规格Specification	单位Units
频带 Frequency Band	2400~2483	MHz
极化 Polarization	线极化	
*最大增益 Peak Gain	2.67	dBi
*效率 Efficiency	72.30	%
阻抗 Impedance	50	Ω

■ 编码 Part Numbering System

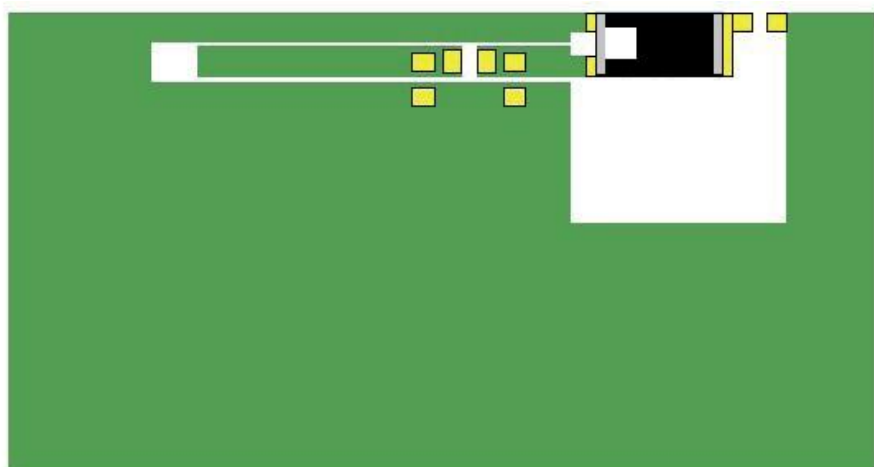
CS - 2450 - 31 - L
 Material Frequency Size Type



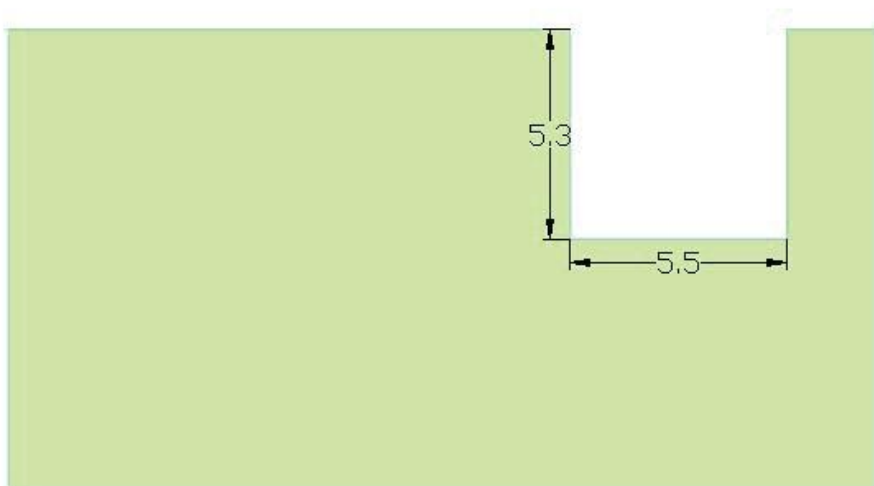
■ 评价板 Evaluation Board



- 天线
- PAD
- 底层铺铜
- 顶层铺铜
- 打孔



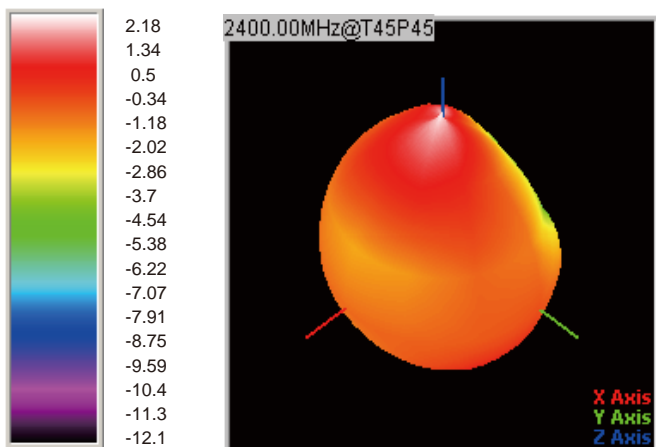
- 天线
- PAD
- 底层铺铜
- 顶层铺铜



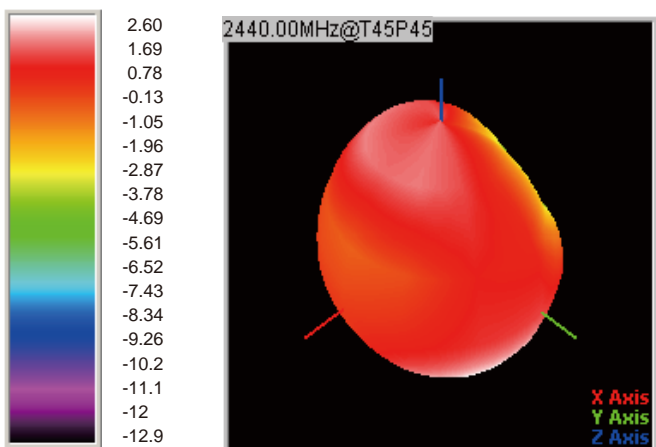
■ 辐射模式 Radiation Patterns

□ 2.4GHz WLAN BAND

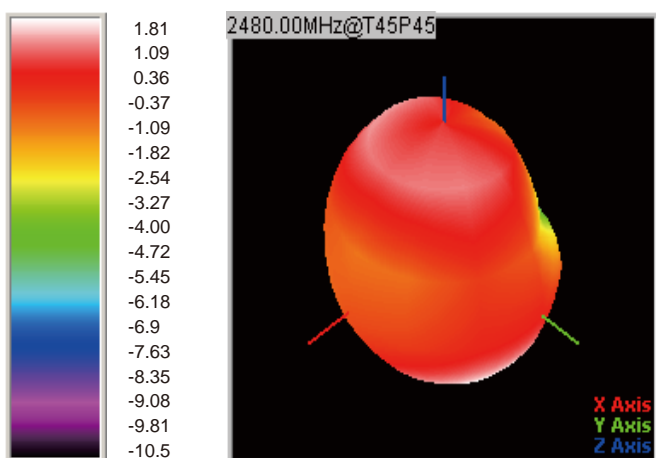
◎ 3D Gain Pattern (2400 MHz)



◎ 3D Gain Pattern (2440 MHz)



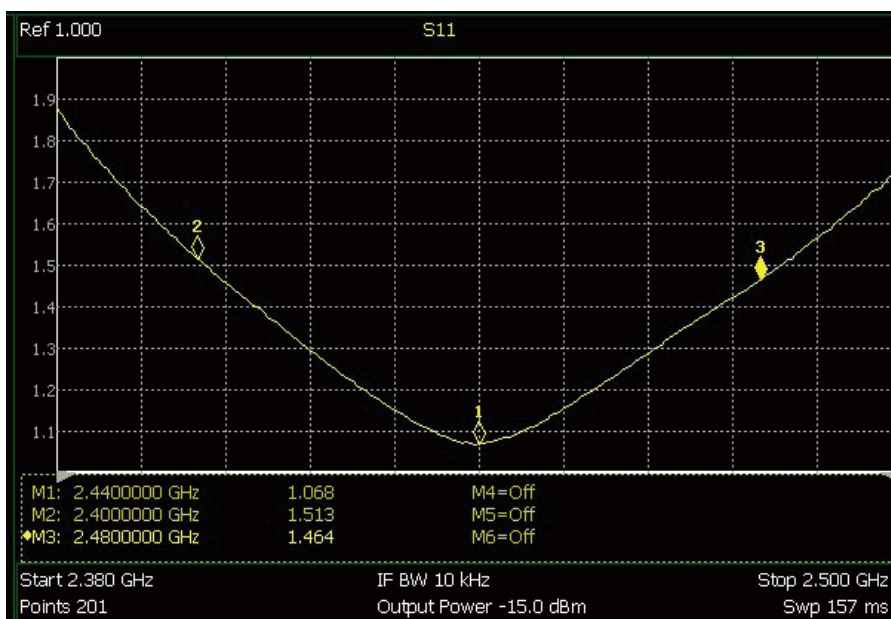
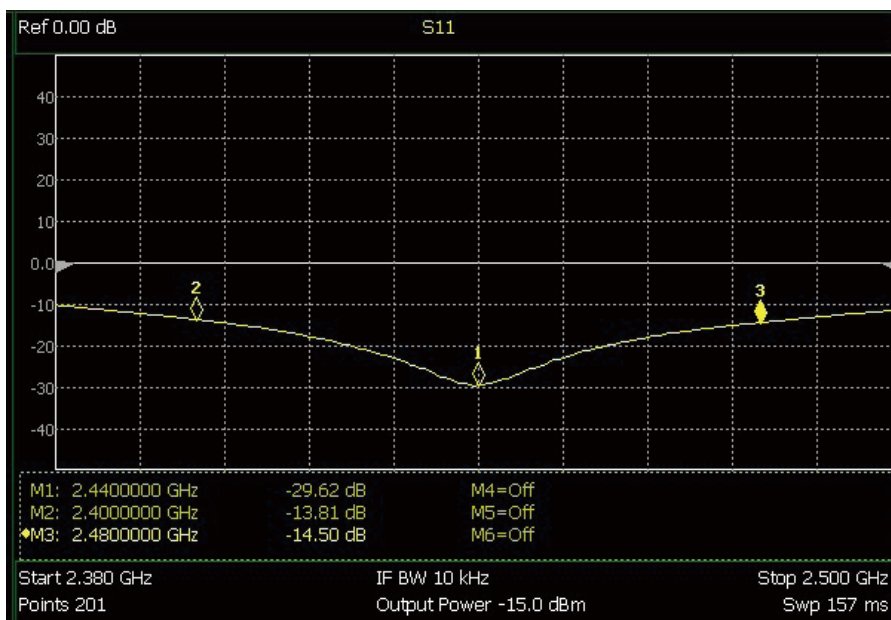
◎ 3D Gain Pattern (2480 MHz)



Freq (MHz)	Effi (%)	Gain (dBi)
2400	74.8	2.67
2410	72.59	2.54
2420	71.6	2.25
2430	70.29	2.07
2440	71.23	2.16
2450	72.3	2.37
2460	71.04	2.52
2470	65.95	2.35
2480	64.42	2.42
2490	62.59	2.31
2500	60.01	2.07

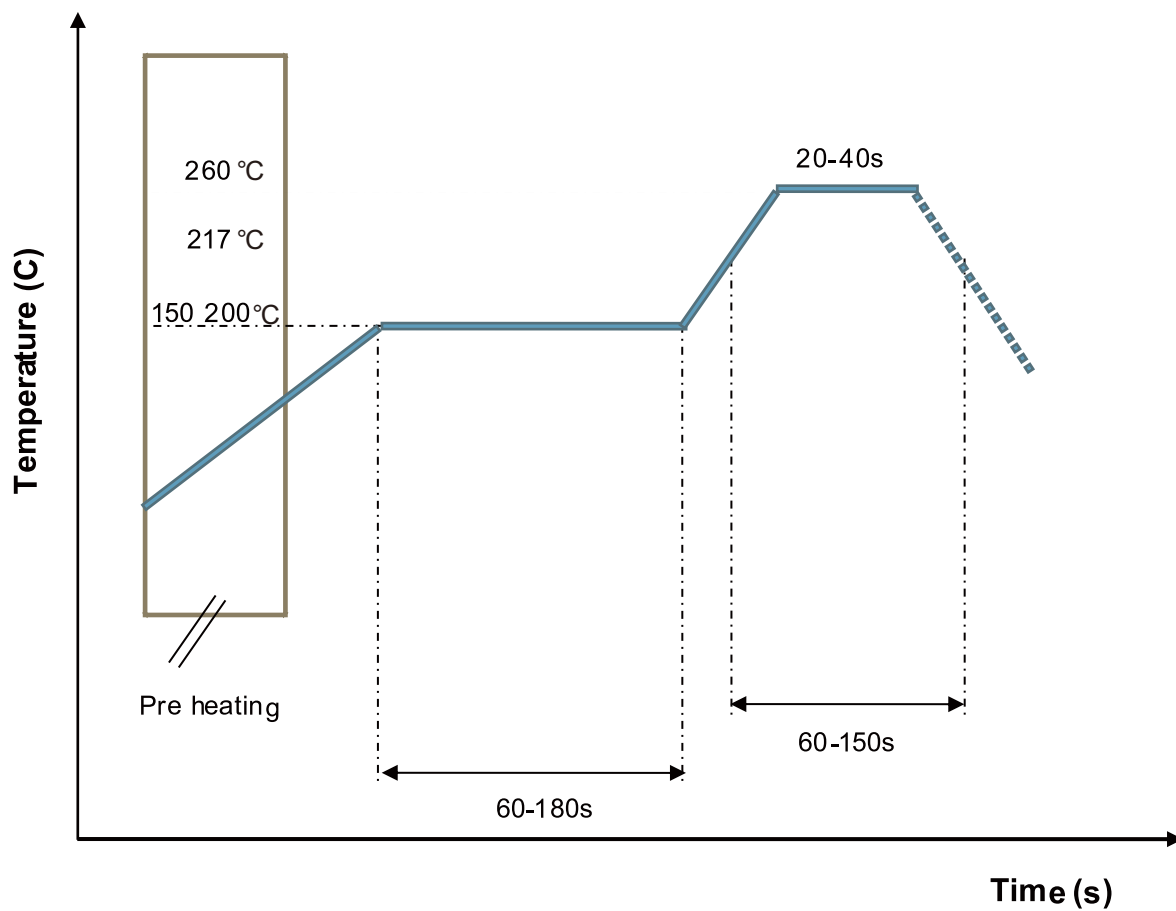
■ 频率特性 Frequency Characteristics

□ EFFICIENCY AND VSWR



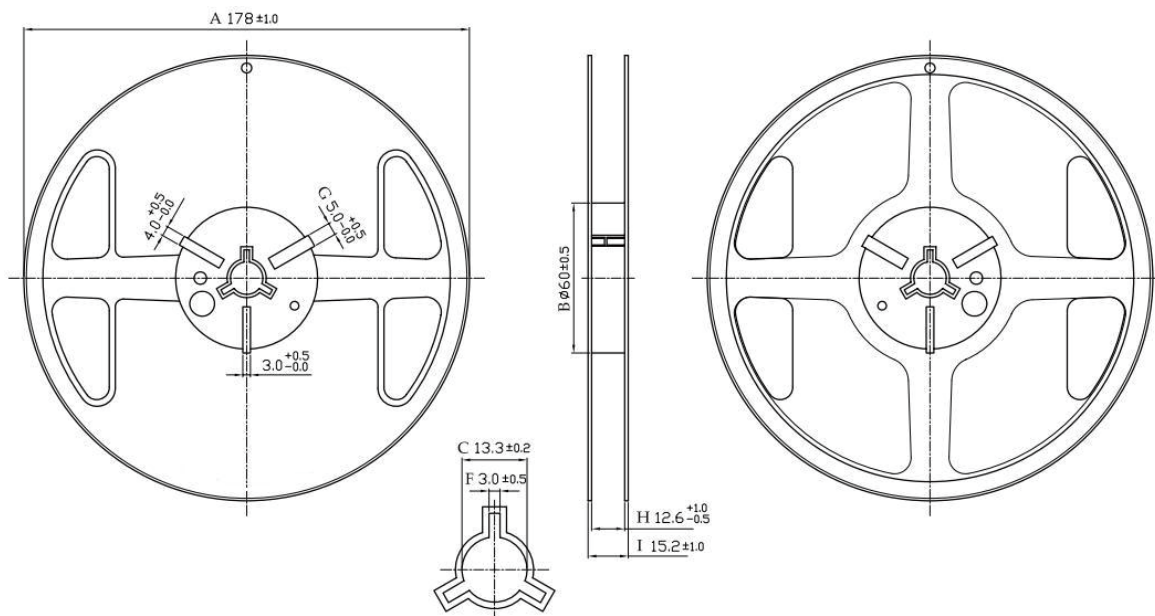
■ 推荐回流剖面

RECOMMENDED REFLOW PROFILE

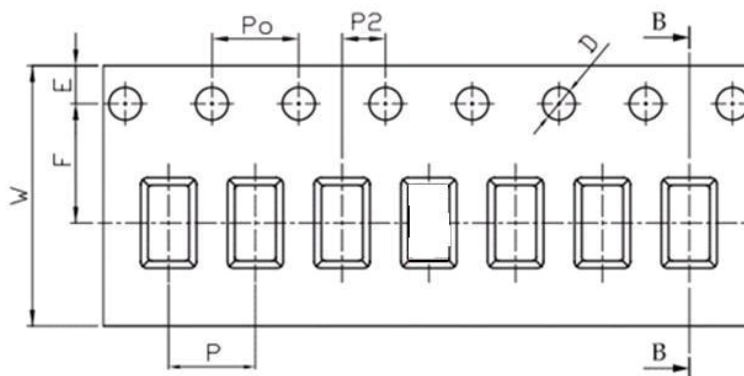


■ 包装形式 Packaging Style

□ REEL DIMENSIONS



□ 胶带尺寸 TAPE DIMENSIONS



Feature	Specifications	Tolerances
W	8.00	±0.30
P	4.00	±0.10
E	1.75	±0.10
F	3.50	±0.10
P2	2.00	±0.10
D	1.50	+0.10 -0.00
P ₀	4.00	±0.10
10P ₀	40.00	±0.20

数量Quantity:5000pieces per 7 reel