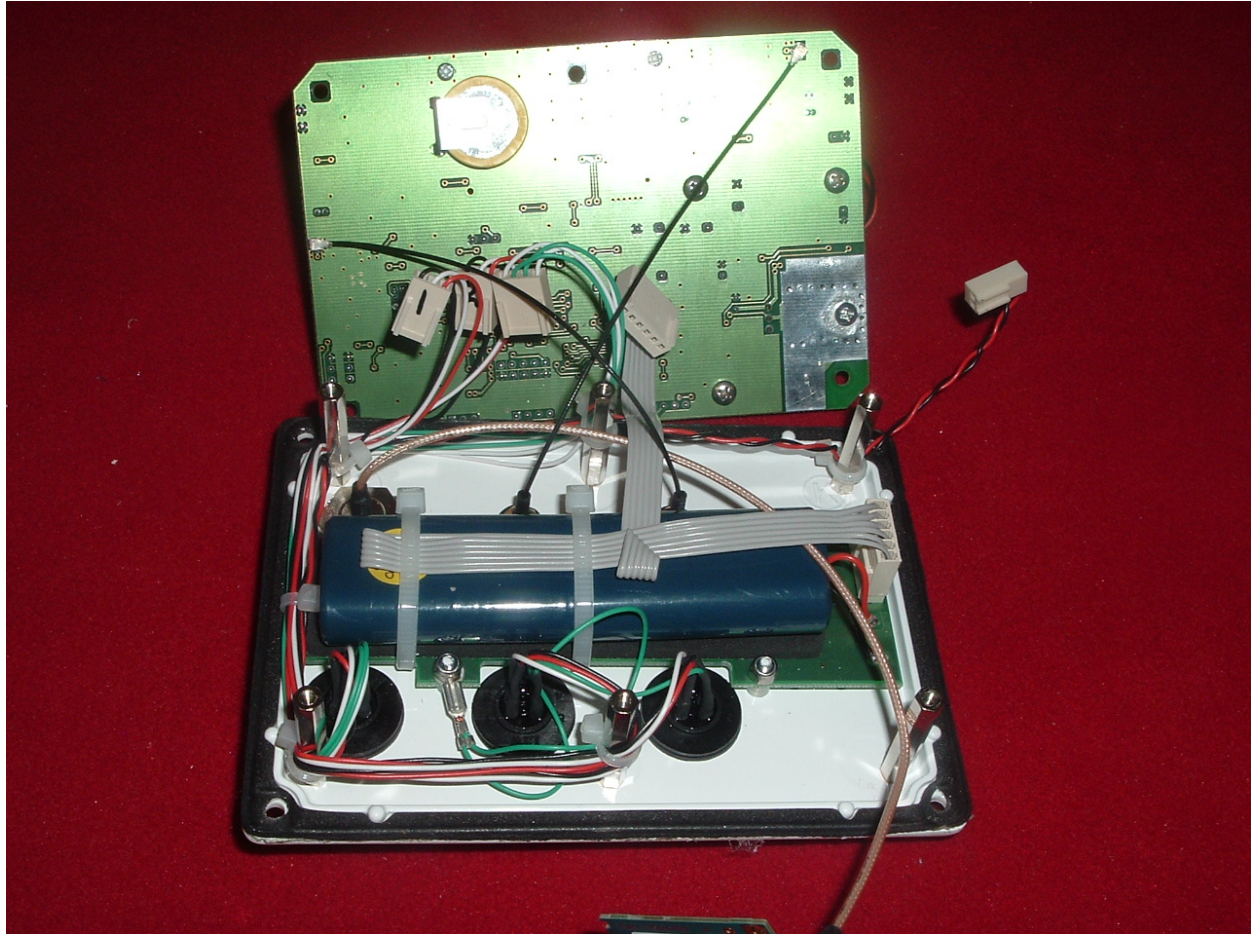
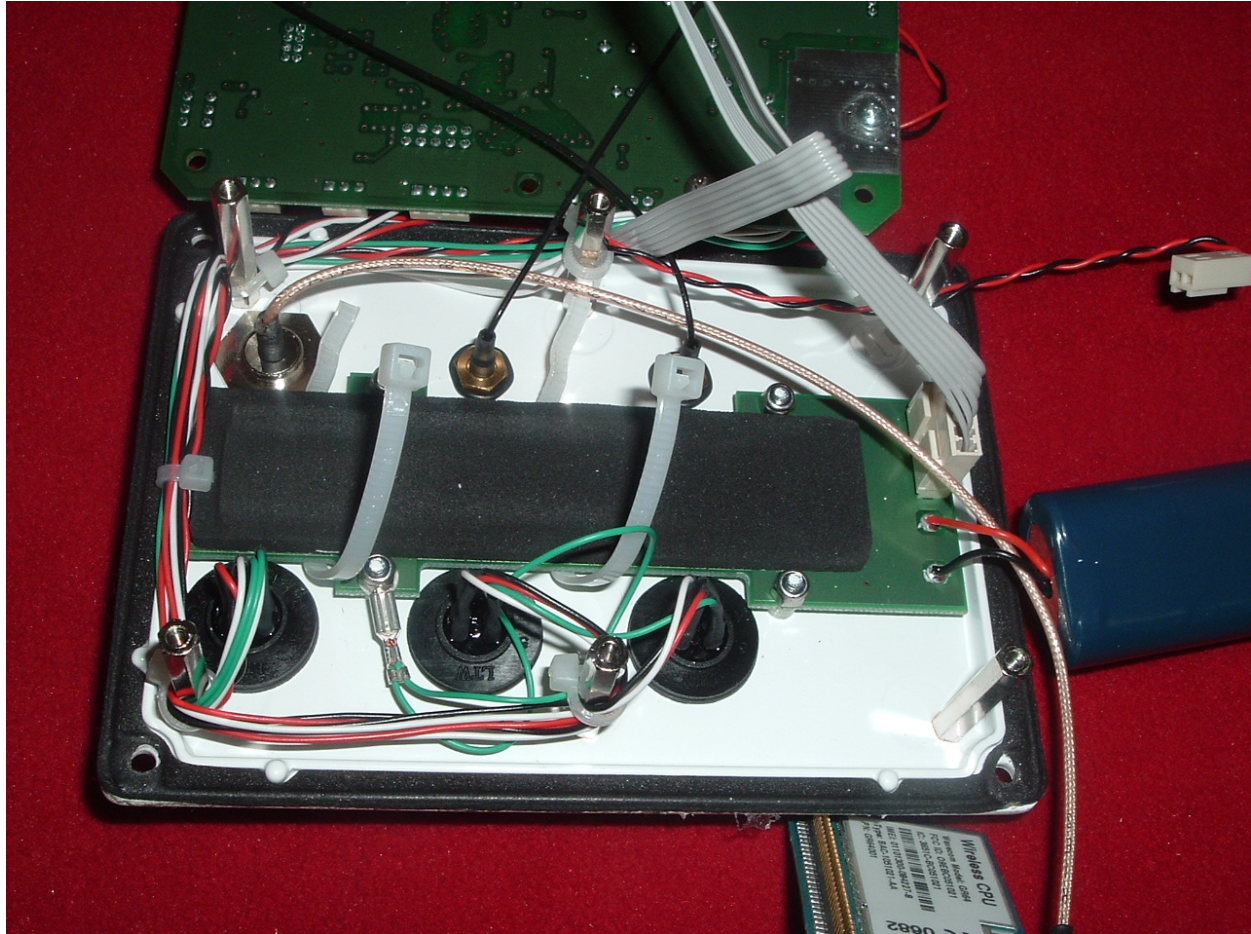


**5.10 Solder Side of Mother Board showing Batteries.**

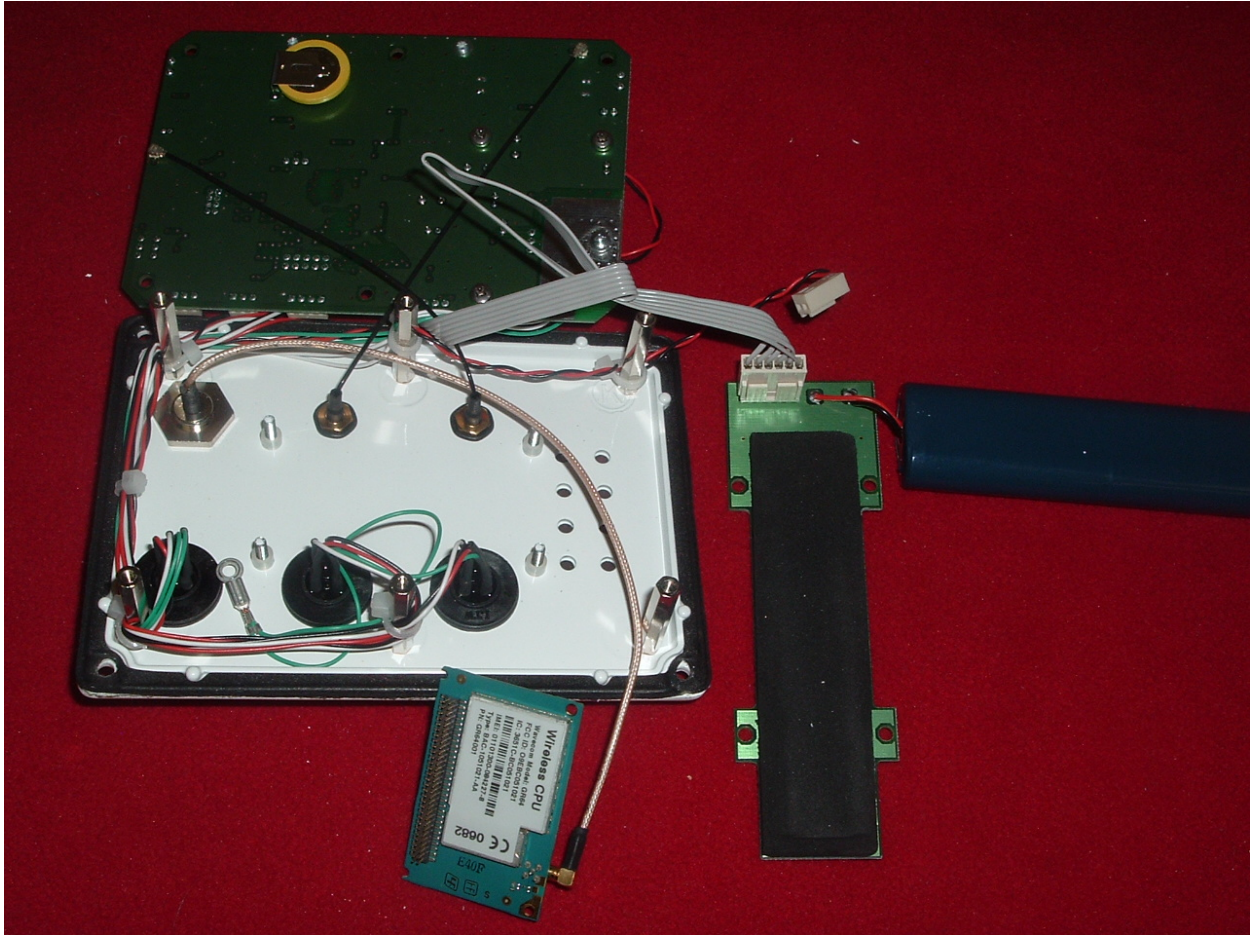


### 5.11 Batteries Removed.

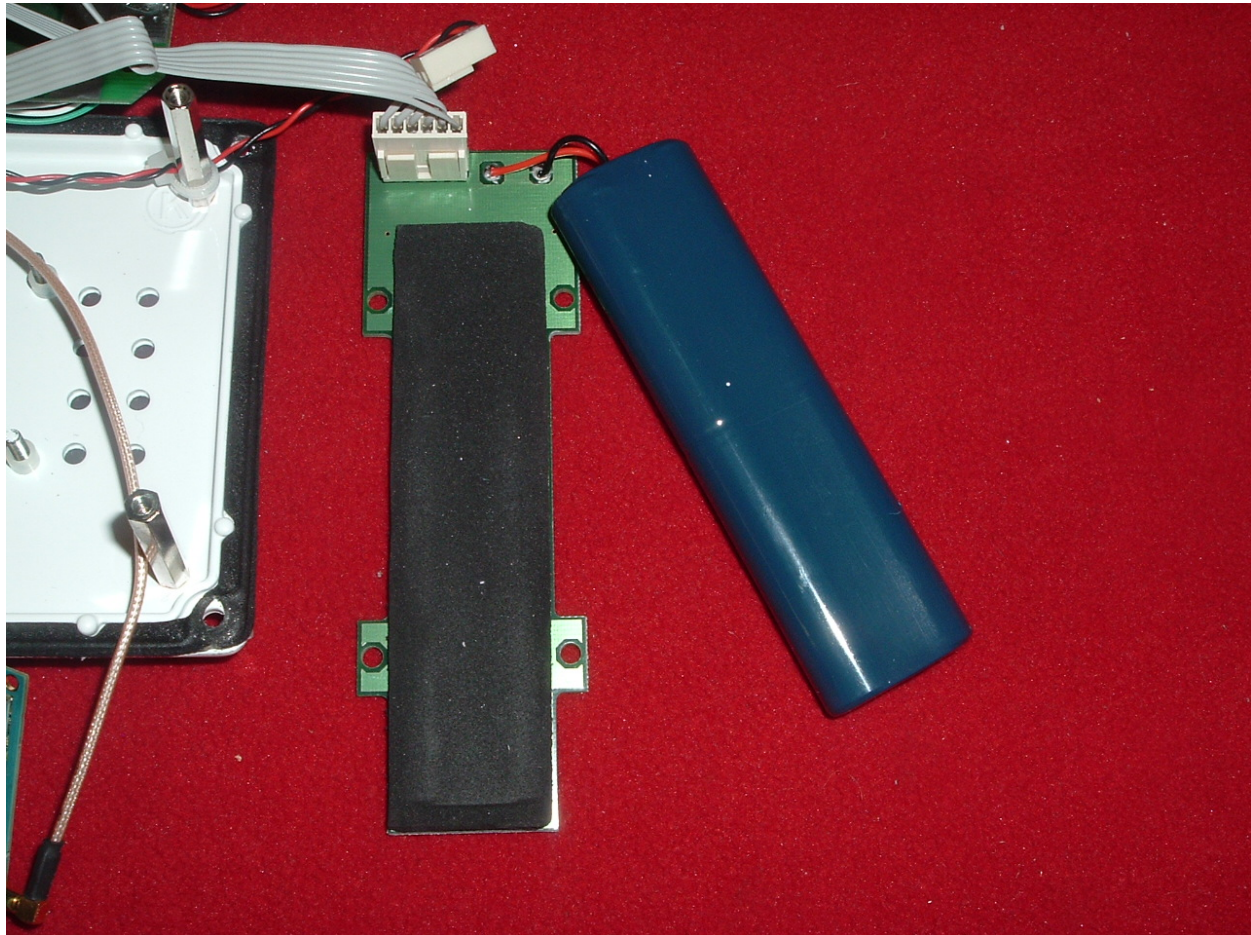




**5.12 Inside of Top Cover showing Battery Board.**

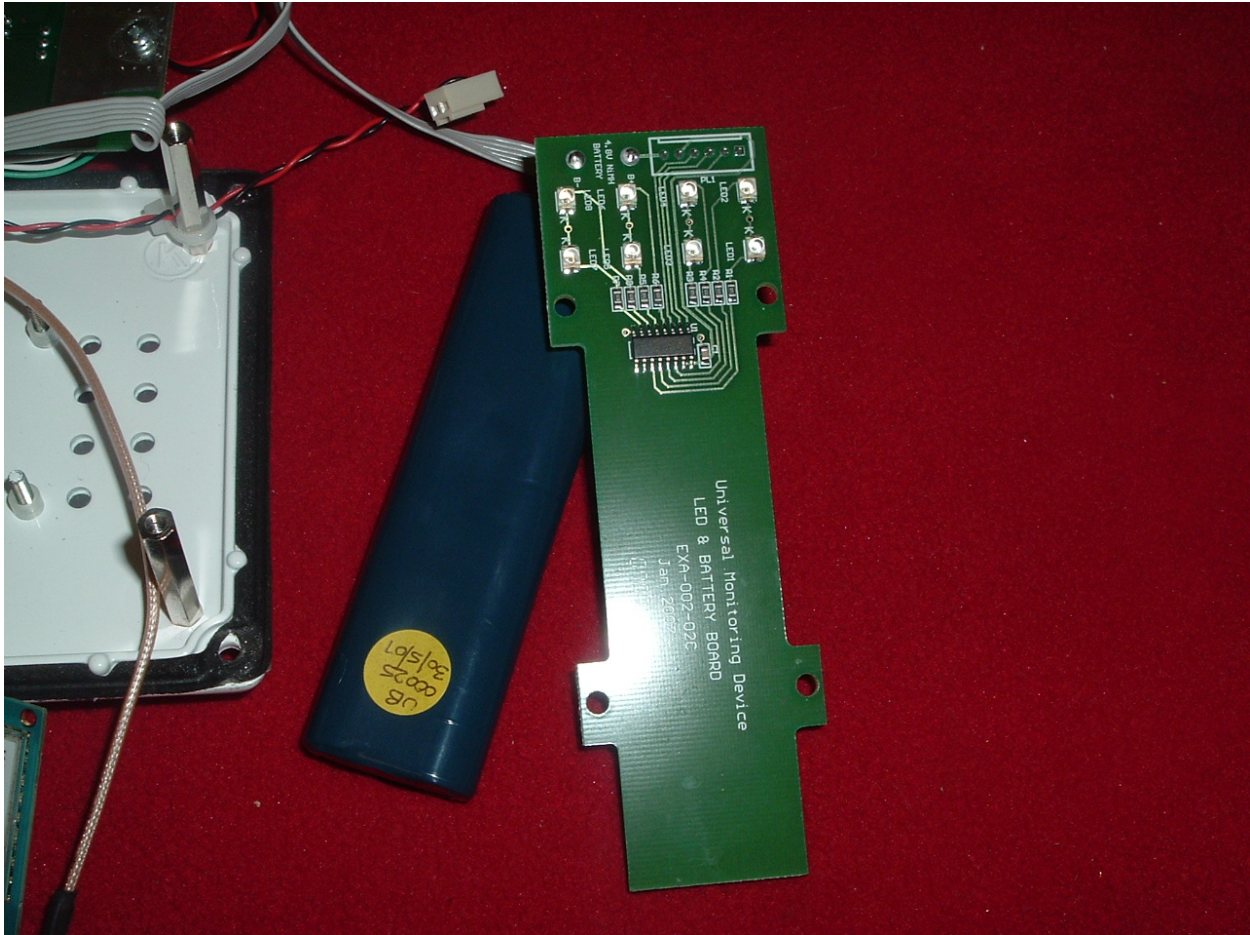


### 5.13 Battery Board.

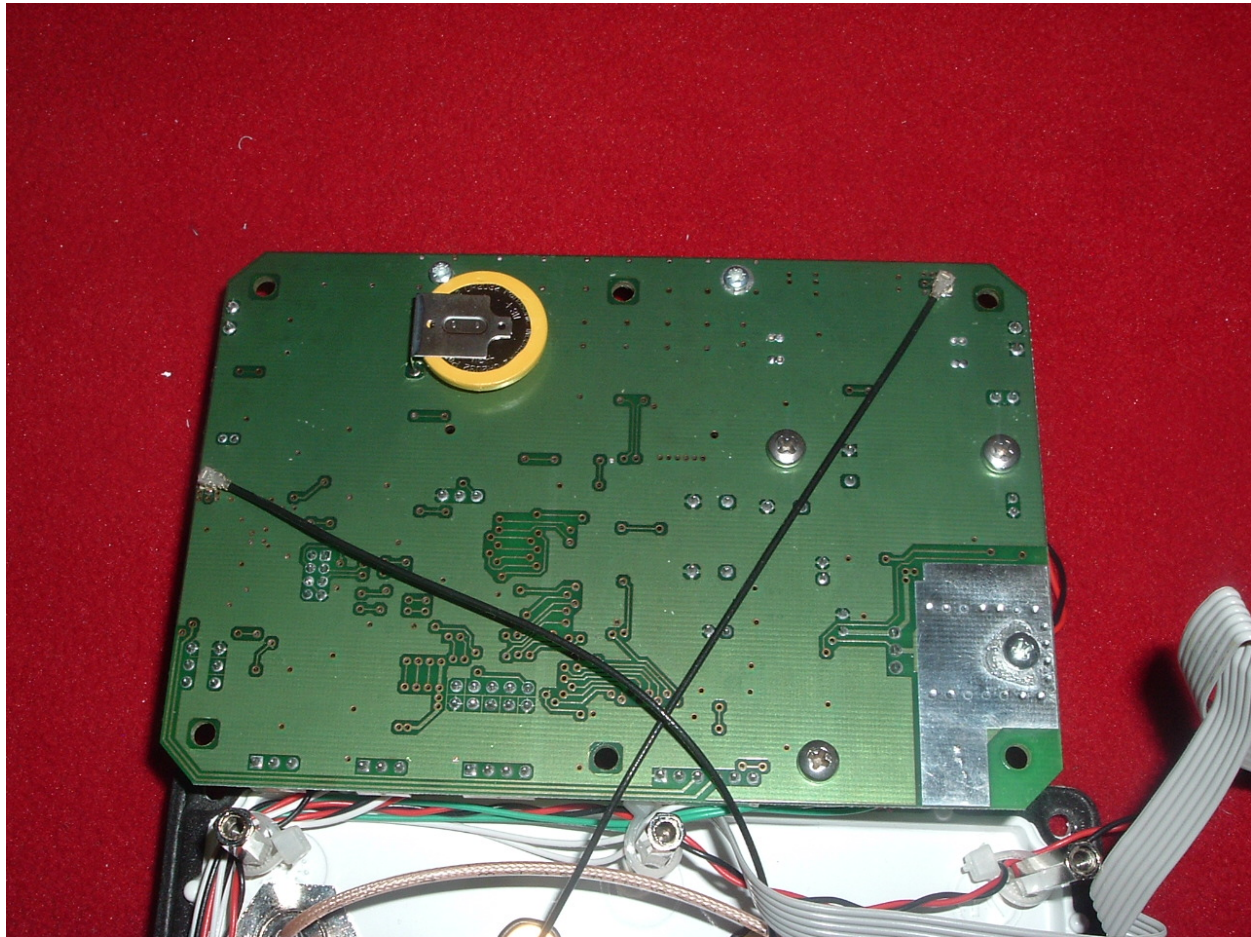




### 5.14 Solder Side of Battery Board.



### 5.15 Solder Side of Mother Board.





**5.16 Memory Chip Removed.**

