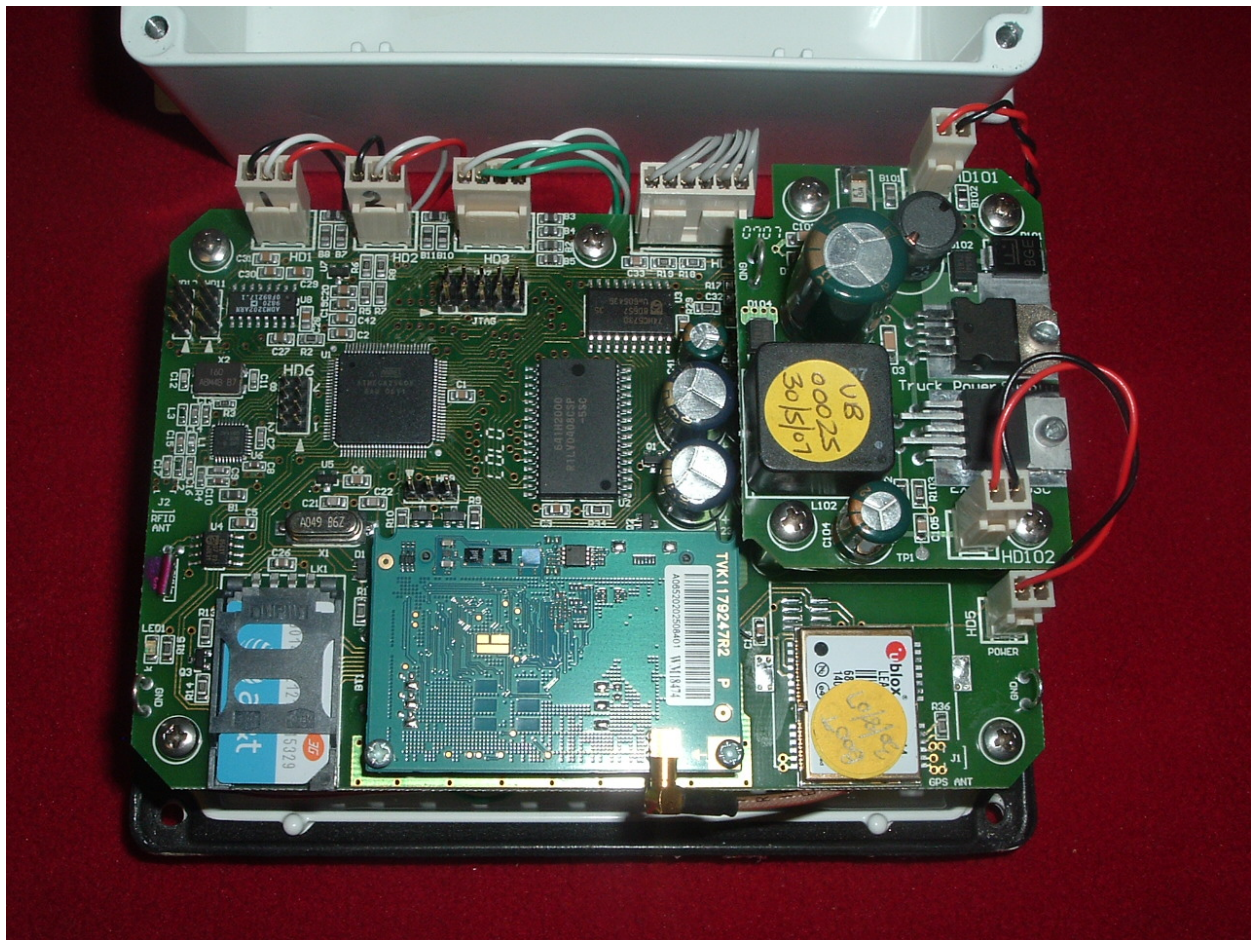
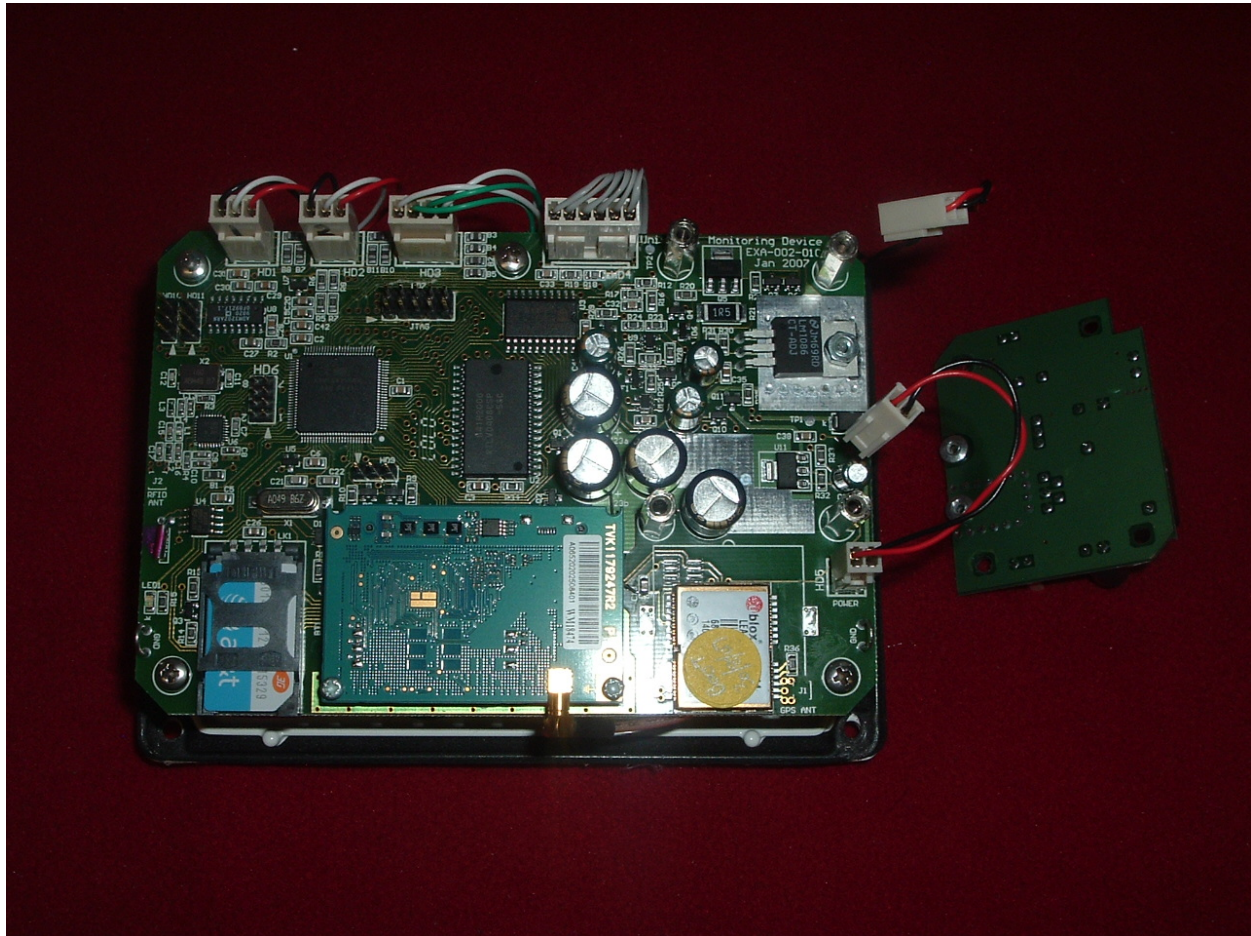


5.3 EUT, Cover Removed.



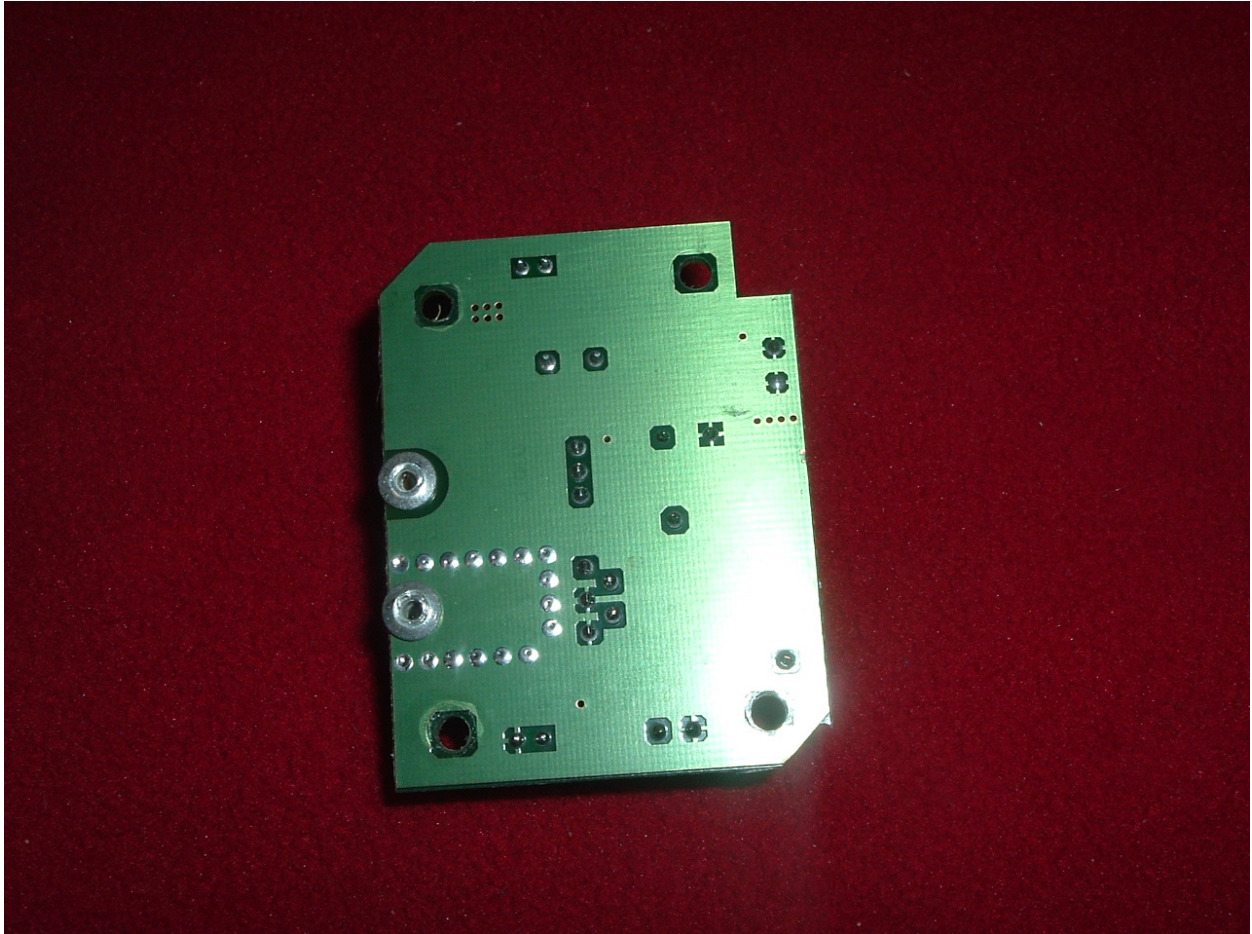
5.4

Cover Removed, Daughter Board Removed.

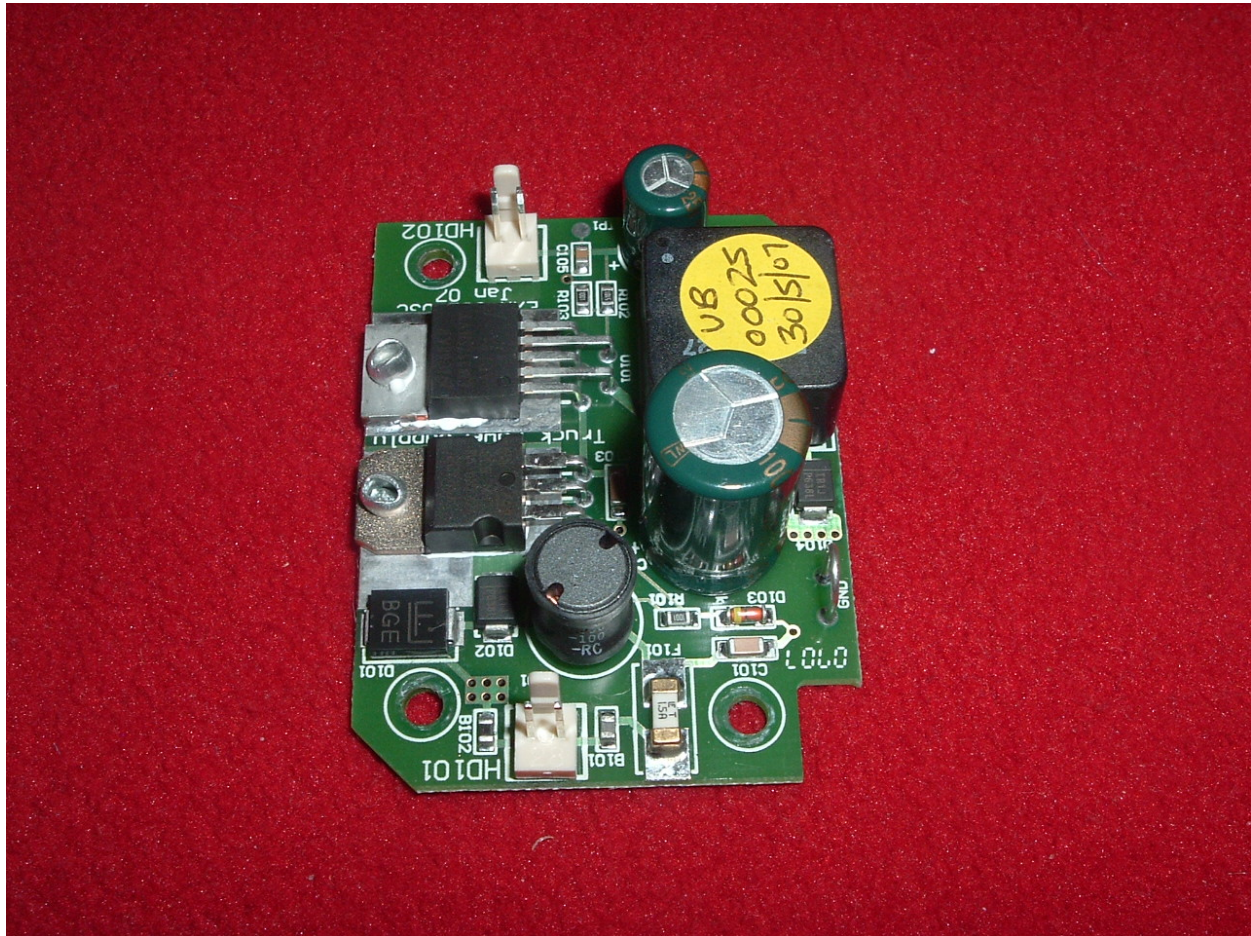


5.5

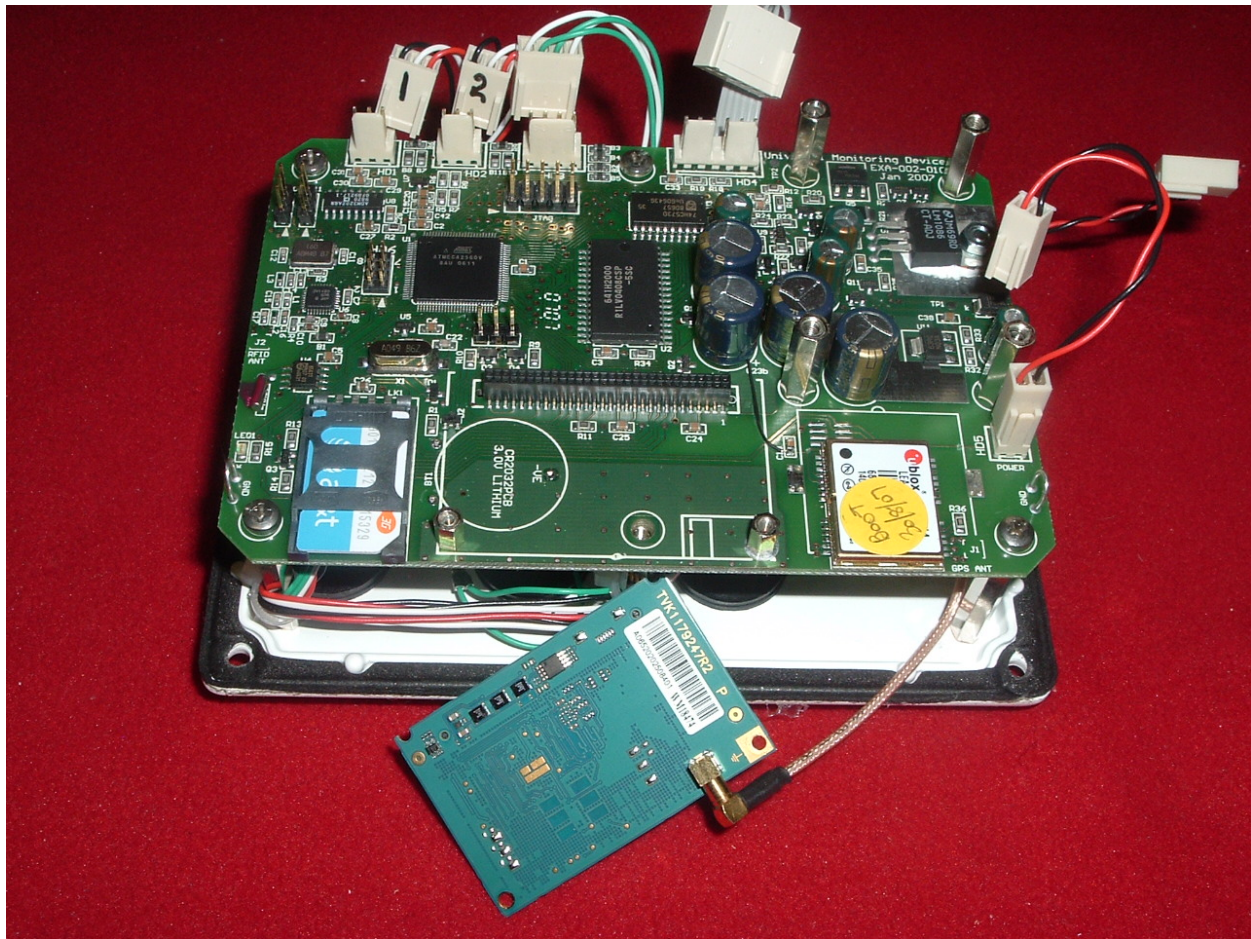
Solder Side, Daughter Board.



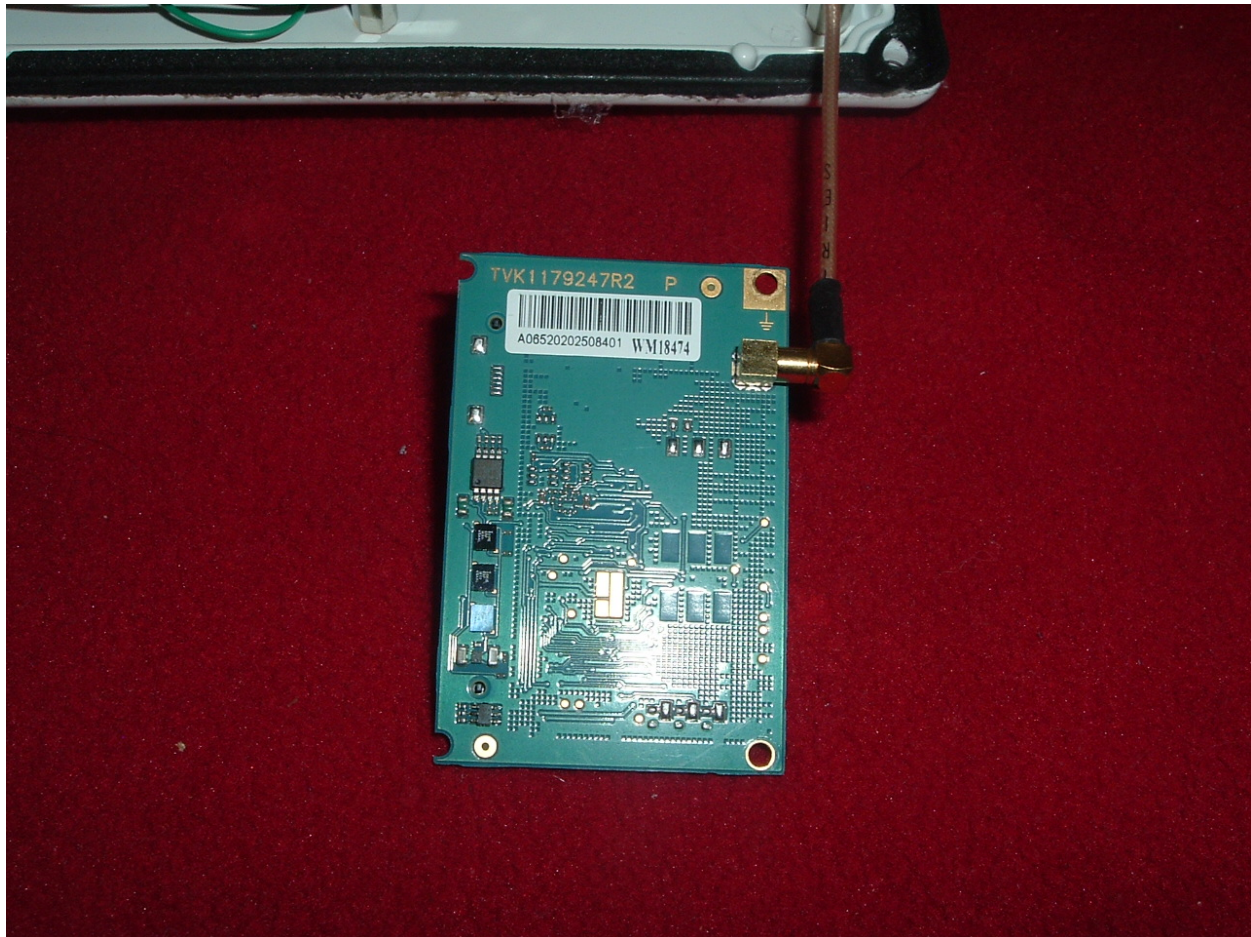
5.6 Component Side of Daughter Board.



5.7 Daughter Board 2 Removed.



5.8 Component Side of Daughter Board 2.



5.9 Plug Side, Daughter Board 2.

