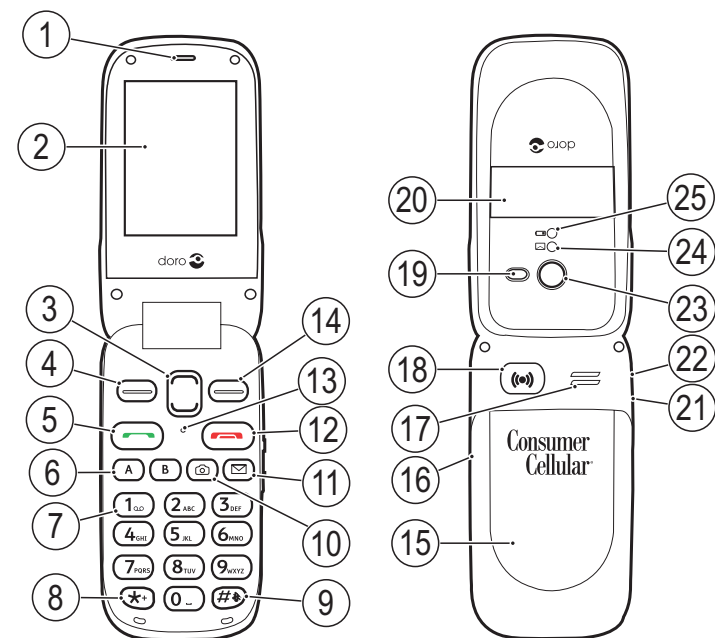


Doro PhoneEasy® 626

Quick Start Guide

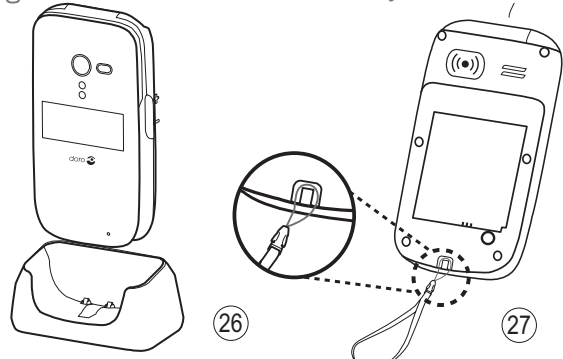
English



Consumer Cellular



- | | |
|---------------------------------|--|
| 1. Earpiece | 15. Battery cover |
| 2. Display | 16. Volume control |
| 3. Arrow buttons | 17. Loudspeaker |
| 4. Left selection button | 18. Assistance button |
| 5. Call button | 19. Flash |
| 6. Speed dials | 20. External display |
| 7. Voice mail | 21. Headset socket |
| 8. International prefix/Symbols | 22. Charging socket |
| 9. Input method/Silent | 23. Camera lens |
| 10. Camera shortcut | 24. Green light=New message/missed call) |
| 11. Message shortcut | 25. Red light=Battery low/charging |
| 12. End call/Power on/off | 26. Charging stand |
| 13. Microphone | 27. Lanyard |
| 14. Right selection button | |



The items supplied with your phone might vary depending on the software and accessories available in your region or offered by your service provider. You can obtain additional accessories from your local Doro dealer. The supplied accessories provide the best performance with your phone.

The full manual can be downloaded at www.ConsumerCellular.com/DoroPhoneEasy626 OR www.doro.com

You may also view helpful how-to videos at www.ConsumerCellular.com/Support/VideosAnd-Manuals

1. GET STARTED

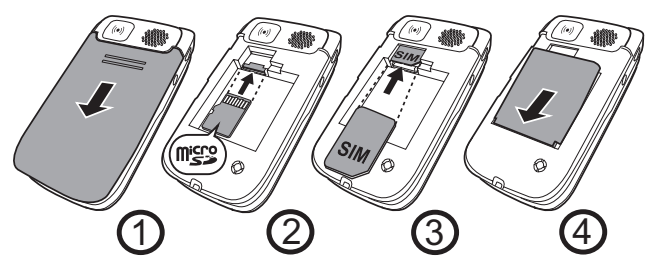
Charging

Warning!
Only use batteries, charger and accessories that have been approved for use with this particular model. Connecting other accessories may be dangerous and may invalidate the phone's type approval and guarantee.

When the battery is running low, is displayed and a warning signal is heard. To charge the battery, connect the AC power adapter to a wall socket and to the charging socket on the phone.

Important!
Turn off the phone and disconnect the charger before removing the battery cover.

Installing the SIM card and battery
The SIM card and battery are normally pre-installed for you. Follow these instructions should you ever need to access them yourself.



1. Remove the battery cover and the battery if it is already installed.
2. Optional: Insert the memory card into the slot **under** the SIM card holder. Make sure that the memory card contacts are facing upwards and push the card in, until you hear a click. To remove or replace the card, push the card in until you hear a click, then release and pull out the card.
3. Insert the SIM card by gently sliding it into the **UPPER** holder. Make sure that the SIM card's contacts are facing downwards and that the cut off corner is pointing outwards.
4. Insert the battery by sliding it into the battery compartment. Replace the battery cover.
Note! Take care not to scratch or bend the contacts on the cards.

Important!

Use only compatible memory cards for use with this device. Compatible card type: microSD, microSDHC. Incompatible cards may damage the card and the device and corrupt data stored on the card. Memory cards are sold separately.

Note! To save power the LCD backlight goes off after a while. Press any button to illuminate the display. Full battery capacity will not be reached until the battery has been charged 3-4 times. Batteries degrade over time, which means that call time and standby time will normally decrease with regular use. During extended operation, the device may feel warm. In most cases, this is normal. To avoid getting too warm, the device may switch off charging. If the device is not working properly, please use the support details, see [Support](#).

Turning phone on & off

1. Press and hold the red button on the phone to turn it on/off. It takes several seconds so keep holding until you hear the sound.
2. If the SIM card is valid but protected with a PIN code (Personal Identification Number), PIN is displayed. Enter the PIN code and press **OK**. Delete with **Clear**.

Note! If PIN and PUK codes were not provided with your SIM card, please contact your service provider. **Tip:** It is recommended to remove the protective plastic film from the display to enhance the visibility.

Attempts: # shows the number of PIN attempts left. When no more attempts remain, **PIN blocked** is displayed. The SIM card must now be unlocked with the PUK code (Personal Unblocking Key).

1. Enter the PUK code and confirm with **OK**.
2. Enter a new PIN code and confirm with **OK**.
3. Re-enter the new PIN code and confirm with **OK**.

2. GET TO KNOW YOUR PHONE

Start-up wizard

When starting the telephone for the first time, you can use the Start-up wizard to set some basic settings.

Tip: You can run the start-up wizard later if you want.

Step-by-step instructions

The arrow () indicates next action in step-by-step instructions. To confirm an action, press **OK**.

To select an item, scroll or highlight the item using and then press **OK**.

Enter text

Select character

- Press a numerical button repeatedly until desired character is shown. Wait a few seconds before entering the next character.

Special characters/smileys

1. Press for a list of special characters and smileys.
2. Select the desired character with and press **OK** to enter it.

Move the cursor within text

- Use the side buttons +/- or to move the cursor within the text.

Upper case, lower case and numerals

- Press to cycle upper case, lower case and numerals.

Change writing language

1. Press and hold for a list of available languages.
2. Select language with and press **OK** to confirm.

Enter text with predictive text

You can use Smart ABC (eZiType™) input method which uses a dictionary to suggest words. See [Message settings/Predictive text](#) in the full manual.

Enter phone numbers

For international calls, always use + before the country code for best operation. Press twice for the international prefix +.

You can dial or save phone numbers with pauses for use with automated systems, such as voicemail or credit card billing numbers. There are two types of pauses available on your phone, press repeatedly until desired character is shown.

Setting the language, time and date

The default language is determined by the SIM card. See the full manual if you would like to change language, time and date.

Save energy

When you have fully charged the battery and disconnected the charger from the device, unplug the charger from the wall outlet.

3. CALLS

Make a call

1. Enter the phone number.
2. Press to start the call.
3. Press to end the call.

Note! There is no dial tone. Simply have the phone turned on and it is ready for use.

Make a call from the phonebook

1. Press **Name** to open the phonebook.
2. Use to scroll through the phonebook, or quick search by pressing the button corresponding to the first letter of the name.
3. Press to dial the selected entry, or press **Back** to return to standby.

Receive a call

To answer an incoming call when the flip is closed, open the flip.

If the flip is already open, or if **Open to answer** is set to **Off**:

1. Press to answer, or press **Silent** to switch off the ring signal and then **Reject** to reject the call (busy signal).
Alternatively, press to reject the call directly.
2. Press to end the call.

See [Settings/Calls/Answer mode](#) in the full manual.

Other Call Options

Voice mail

The voice mailbox can be called by pressing and holding .

Speed dial

The numerical buttons **A** and **B** and the numerical buttons **0** and **2-9** can be used for speed dialing.

Add speed dial numbers

- **Menu** → **Settings** → **Calls** → **Speed dial**

Top 10

Set the entry as one of the first 10 contacts listed in the phonebook.

- **Menu** → **Settings** → **Calls** → **Top 10**

Volume control

Use to adjust the sound volume. The volume level is indicated on the display. See also [Audio setup](#) in the full manual.

Selection buttons

The selection buttons have multiple functions. The current button function is shown above the selection button on the display. During a call the selection buttons give access to additional functions.

Call log

Received, missed, and dialed calls are saved in a combined call log. 20 calls of each type can be stored in the log. For multiple calls related to the same number, only the most recent call is saved.

Retrieving and dialing

1. Press .
2. Use to scroll through the call log
 - = Received call
 - = Dialed call
 - = Missed call
3. Press to dial the highlighted number.

4. USING PHONEBOOK

The Phonebook can store 500 entries with 3 phone numbers in each entry.

Create a phonebook entry

1. Press **Menu** → **Phonebook** → **-New contact-** → **Add**.
2. Enter **Name** for the contact. Delete with **Clear**.
3. Use to select **Mobile**, **Home** or **Office**, enter the phone number(s) including the area code.
4. Select **Picture** → **Edit** to associate a picture to the contact.
 - **Take picture** to use the camera to take a picture.
 - **My pictures** to select an existing picture.
5. Select **Ringtone** → **Edit**.
 - **System** to select from pre-installed files.
 - **User** to select from your downloads.
6. When done, press **Save**.

See [Phonebook/Add contact](#) in the full manual.

Create ICE entry (In Case of Emergency)

First responders can access additional information such as medical information from the victim's phone in case of emergency. In the event of a trauma, it is critical to have this information as early as possible to increase the chances of survival. All fields are optional, but the more information provided the better.

1. Press **Menu** → **Phonebook** → **ICE**.
2. Use to scroll the list of contacts.
3. Press **Edit** to add or edit information in each field. Delete with **Clear**.
4. Press **Save** when done.

4. SOS/911 CALLS

As long as the phone is switched on, it is always possible to place an SOS call by entering the main local emergency number for your present location followed by .

Some networks accept calls to emergency numbers without a valid SIM card. Contact your service provider for more information.

Note! Sometimes an emergency call cannot be placed due to network, environment or interference issues.

5. ASSISTANCE BUTTON

The Assistance button on the back of the phone will automatically dial one number for you. This can be used as a easy way to reach a family member or friend if you need help. The Assistance function must be activated before use. See the full manual for instructions.

6. CAMERA

To get sharp photos, wipe the lens clean with a dry cloth.

1. Press shortcut button .
Alternatively, press **Menu** → **Camera** → **Camera**.
2. Press to take photo.
3. Press **Options** or **Back** (if you do not make any selection the picture is saved).

7. MESSAGES

Create and send text messages

1. Press shortcut button .
Alternatively, press **Menu** → **Messages** → **Create new** → **Text message** → **Write message**.
2. Type your message, then press **To**.
3. Select a recipient from phonebook.
Alternatively, select **Enter number** to add recipient manually and press **Done**.
4. Press **Add** to add more recipients.
5. When done, press **Send**.
Tip: You can modify the recipients by selecting one, press **Options** → **Edit/Delete**.

Note! If you choose to add multiple recipients, you will be charged for each recipient (maximum 10).

Read an incoming message

When you receive a message while your phone is on, the screen will display . Press **View** to read the message.

Create and send picture messages

A picture message can contain text and media objects such as pictures, sound recordings and video. Both you and the recipient must have subscriptions that support picture messages.

1. Press shortcut button .
Alternatively, press **Menu** → **Messages** → **Create new** → **Picture message** → **Write message**.
2. Type your message, then press **Options**.
3. Add items to your message from the options **Add picture**, **Add sound**, **Add video** and **Add subject**.
4. Add recipients with **To** and **Send** when ready.

Emergency alerts

1. Press shortcut button .
Alternatively, press **Menu** → **Messages**.
2. Select **Emergency Alerts**.
3. Select **Inbox**.
4. Select a message and press **View**. Use to scroll up/down.

8. CUSTOM SETTINGS

Silent

Use **Silent** to silence your ringtones.

Press and hold to activate/deactivate silent.

Tip: Press and hold + or - to temporary switch off the ring signal without opening the flip.

Change ringtones

You can select different ringtones. Follow this sequence to reach the customization.

1. **Menu** → **Settings** → **Sound** → **Tone setup** → **Ringtone**.
2. Use to scroll between options. When you pause on a melody, you will hear its sound.
3. Once you have found the ringtone you wish to use, press **OK** to select.

You can use this same process to customize the tones for your the **Alarm**, **Message tone**, **Opening tone**, **Closing tone**, **Keypad tone**, **Power on** and **Power off** in the same way.

Display background (wallpaper)

You can select different display backgrounds.

- **Menu** → **Settings** → **Display** → **Wallpaper**

9. BLUETOOTH®

You can connect wireless to other Bluetooth compatible devices such as headsets.

- **Menu** → **Settings** → **Bluetooth** → **Function on/off**

10. USEFUL TOOLS

Alarm

Use the Alarm feature to set wake-up call or help you keep track of an important time.

Organizer

Use the Organizer to store tasks to help you keep track of important events.

Note! These functions will work even when the phone is switched off.

Calculator

The Calculator can perform basic math operations.

Image viewer

Use the Image viewer to view your saved images and detailed information about files, e.g. date, size and copyright.

Flashlight

Use the built-in flashlight.

Note! The flashlight will drain the battery very quickly. Remember to turn off the flashlight after use.

