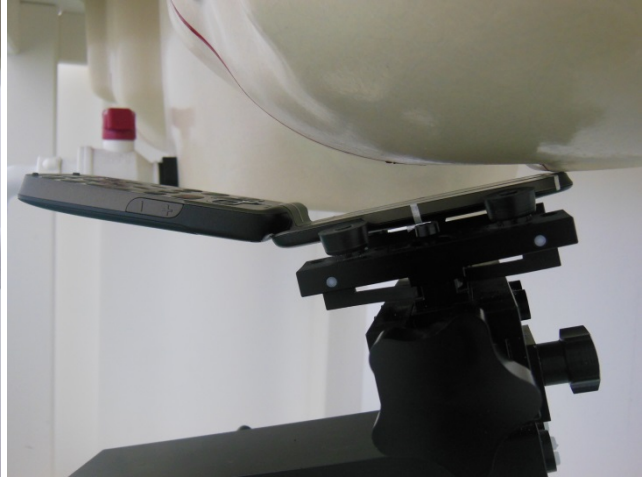


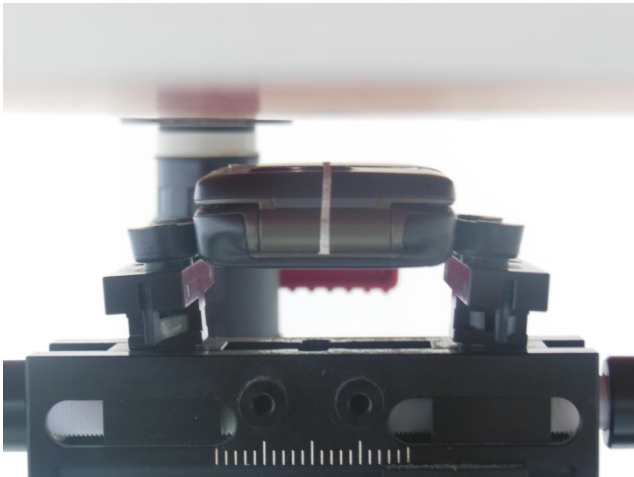
Appendix E. SAR Test Setup Photos



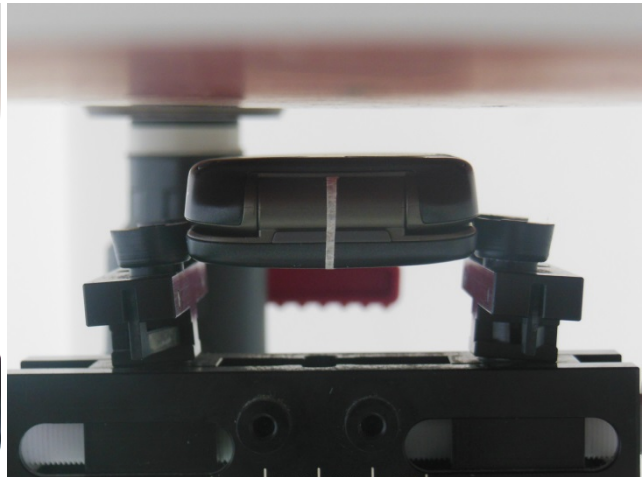
Right Tilted (Flip Open)



Left Tilted (Flip Open)



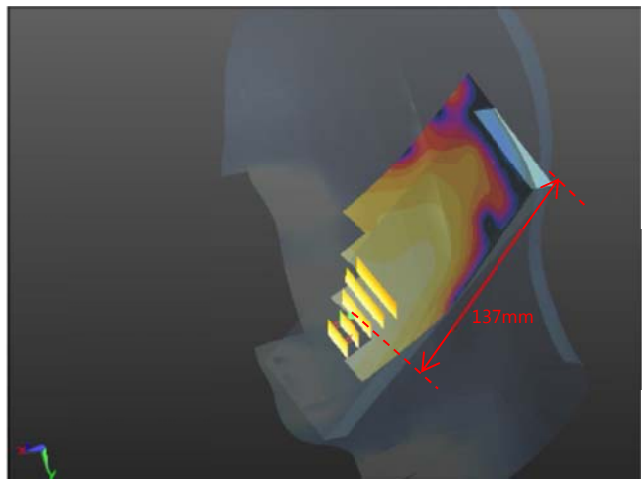
Front, Test Separation 1.5 cm (Flip Close)



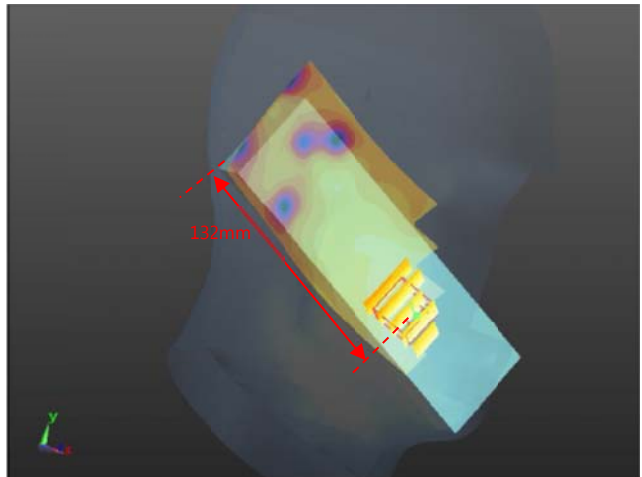
Back, Test Separation 1.5 cm (Flip Close)



Right Cheek (Flip Open)



Left Cheek (Flip Open)



Left Cheek SAR in mouth area (Flip Open)

Note: Chose the shortest distance of SAR peak location to phantom surface between right cheek and left cheek to perform Mouth area SAR testing.