



Variant Hearing Aid Compatibility (HAC) RF Emissions Test Report

APPLICANT : Doro AB
EQUIPMENT : Mobile Telephone
BRAND NAME : Doro
MODEL NAME : Doro PhoneEasy 618
FCC ID : WS5DORO618
STANDARD : FCC 47 CFR §20.19
ANSI C63.19-2007
M CATEGORY : M3

This is a variant report which is only valid together with the original test report. The product was completely tested on Mar. 28, 2013. We, SPORTON INTERNATIONAL (SHENZHEN) INC., would like to declare that the tested sample has been evaluated in accordance with the procedures and shown the compliance with the applicable technical standards.

The test results in this report apply exclusively to the tested model / sample. Without written approval of SPORTON INTERNATIONAL (SHENZHEN) INC., the test report shall not be reproduced except in full.

Reviewed by: Eric Huang / Vice Manager

Approved by: Jones Tsai / Manager



SPORTON INTERNATIONAL (SHENZHEN) INC.

No. 101, Complex Building C, Guanlong Village, Xili Town, Nanshan District, Shenzhen, Guangdong, P.R.C.

SPORTON INTERNATIONAL (SHENZHEN) INC.

TEL : 86-755-8637-9589

FAX : 86-755-8637-9595

FCC ID : WS5DORO618

Page Number : 1 of 31

Report Issued Date : Apr. 24, 2013

Report Version : Rev. 03



Table of Contents

Revision History.....3
1. Statement of Compliance.....4
2. Administration Data.....6
2.1 Testing Laboratory.....6
2.2 Applicant.....6
2.3 Manufacturer.....6
2.4 Application Details.....6
3. General Information.....7
3.1 Description of Device Under Test (DUT).....7
3.2 Product Photos.....9
3.3 Applied Standards.....9
3.4 Test Conditions.....10
3.4.1 Ambient Condition.....10
3.4.2 Test Configuration.....10
4. Hearing Aid Compliance (HAC).....11
4.1 Introduction.....11
5. HAC RF Emission Measurement Setup.....12
5.1 E-Field and H-Field Probe System.....13
5.1.1 E-Field Probe Specification.....13
5.1.2 H-Field Probe Description.....13
5.1.3 Probe Tip Description.....14
5.2 DATA Acquisition Electronics (DAE).....15
5.3 Robot.....16
5.4 Measurement Server.....16
5.5 Phone Positioner.....17
5.6 Test Arch Phantom.....17
5.7 Data Storage and Evaluation.....18
5.7.1 Data Storage.....18
5.7.2 Data Evaluation.....18
5.8 Test Equipment List.....20
6. Uncertainty Assessment.....21
7. HAC RF Emission Measurement Evaluation.....23
7.1 Purpose of System Performance Check.....23
7.2 System Setup.....23
7.3 Validation Results.....24
8. RF Field Probe Modulation Factor.....25
9. Description for DUT Testing Position.....29
10. RF Emissions Test Procedure.....31
11. HAC RF Emission Test Results.....32
11.1 Conducted Power (Unit: dBm).....32
11.2 E-Field Emission.....33
11.3 H-Field Emission.....34
12. References.....35
Appendix A. Plots of System Performance Check
Appendix B. Plots of RF Emission Measurement
Appendix C. DASy Calibration Certificate
Appendix D. Product Photos
Appendix E. Test Setup Photos
Appendix F. Product Equality Declaration



Revision History

REPORT NO.	VERSION	DESCRIPTION	ISSUED DATE
HA240604-01A	Rev. 01	This is a variant report for Doro PhoneEasy 618. The product equality declaration could be referred to Appendix F. All test cases were performed on original report which can be referred to SPORTON Report Number HA240603A. Based on the original test report, only the worst cases were verified for the differences.	Apr. 09, 2013
HA240604-01A	Rev. 02	Update report for revising the Software Version.	Apr. 11, 2013
HA240604-01A	Rev. 03	Update report for revising the Software Version.	Apr. 24, 2013



1. Statement of Compliance

The maximum results of RF Emission of Hearing Aid Compliance (HAC) found during testing for the **Doro AB, DUT: Mobile Telephone, Brand Name: Doro, Model Name: Doro PhoneEasy 618** are follows (with expanded uncertainty $\pm 30.4\%$ for E-field and $\pm 21.6\%$ for H-field):

For Sample 1

Band	HAC RF Emission Test Result		M Rating
GSM850	E-Field (V/m)	123.4	M4
	H-Field (A/m)	0.257	M4
GSM1900	E-Field (V/m)	76.428	M3
	H-Field (A/m)	0.205	M3
WCDMA Band V	E-Field (V/m)	51.97	M4
	H-Field (A/m)	0.102	M4
WCDMA Band II	E-Field (V/m)	33.561	M4
	H-Field (A/m)	0.094	M4

For Sample 2

Band	HAC RF Emission Test Result		M Rating
GSM850	E-Field (V/m)	118.8	M4
	H-Field (A/m)	0.247	M4
GSM1900	E-Field (V/m)	76.42	M3
	H-Field (A/m)	0.195	M3
WCDMA Band V	E-Field (V/m)	49.306	M4
	H-Field (A/m)	0.101	M4
WCDMA Band II	E-Field (V/m)	29.711	M4
	H-Field (A/m)	0.093	M4



For Sample 3

Band	HAC RF Emission Test Result		M Rating
GSM850	E-Field (V/m)	114.1	M4
	H-Field (A/m)	0.234	M4
GSM1900	E-Field (V/m)	78.004	M3
	H-Field (A/m)	0.204	M3
WCDMA Band V	E-Field (V/m)	45.823	M4
	H-Field (A/m)	0.095	M4
WCDMA Band II	E-Field (V/m)	30.787	M4
	H-Field (A/m)	0.093	M4

They are in compliance with HAC limits (HAC Rated category M3) specified in guidelines FCC 47 CFR §20.19 and ANSI Standard ANSI C63.19.

Results Summary : M Category = M3 (ANSI C63.19-2007)



2. Administration Data

2.1 Testing Laboratory

Test Site	SPORTON INTERNATIONAL (SHENZHEN) INC.
Test Site Location	No. 101, Complex Building C, Guanlong Village, Xili Town, Nanshan District, Shenzhen, Guangdong, P.R.C. TEL: +86-755-8637-9589 FAX: +86-755-8637-9595
Test Site No.	Sporton Site No. : SAR01-SZ

2.2 Applicant

Company Name	Doro AB
Address	Magistratsvägen 10 SE-226 43 Lund Sweden

2.3 Manufacturer

Company Name	CK TELECOM LTD.
Address	Technology Road.High-Tech Development Zone. Heyuan, Guangdong, P.R.China.

2.4 Application Details

Date of Start during the Test	Mar. 28, 2013
Date of End during the Test	Mar. 28, 2013



3. General Information

3.1 Description of Device Under Test (DUT)

Product Feature & Specification	
DUT Type	Mobile Telephone
Brand Name	Doro
Model Name	Doro PhoneEasy 618
black Color Sample 1	EUT with IMEI Code : 352009050950109
Red Color Sample 2	EUT with IMEI Code : 352009050950505
silvery Color Sample 3	EUT with IMEI Code : 352009050950703
FCC ID	WS5DORO618
Tx Frequency	GSM850 : 824.2 MHz ~ 848.8 MHz GSM1900 : 1850.2 MHz ~ 1909.8 MHz WCDMA Band V : 826.4 MHz ~ 846.6 MHz WCDMA Band II : 1852.4 MHz ~ 1907.6 MHz
Rx Frequency	GSM850 : 869.2 MHz ~ 893.8 MHz GSM1900 : 1930.2 MHz ~ 1989.8 MHz WCDMA Band V : 871.4 MHz ~ 891.6 MHz WCDMA Band II : 1932.4 MHz ~ 1987.6 MHz
Maximum Output Power to Antenna	<p><For Sample 1> GSM850: 32.41 dBm GSM1900: 30.21 dBm WCDMA Band V: 23.08 dBm WCDMA Band II: 23.25 dBm</p> <p><For Sample 2> GSM850: 32.44 dBm GSM1900: 30.22 dBm WCDMA Band V: 23.21 dBm WCDMA Band II: 23.07 dBm</p> <p><For Sample 3> GSM850: 32.35 dBm GSM1900: 30.31 dBm WCDMA Band V: 23.15 dBm WCDMA Band II: 23.06 dBm</p>
Antenna Type	Fixed Internal Antenna
HW Version	APPLE-V2.0
SW Version	APPLE-S01B_DORO618_L3EN_206_130423
Type of Modulation	GSM: GMSK GPRS: GMSK WCDMA: QPSK (Uplink)
DUT Stage	Identical Prototype



List of air interfaces / frequency bands:

Air Interface	Band (MHz)	Voice/Data	C63.19-2007 Tested	Concurrent connections	Reduced power 20.19 (c)(1)
GSM	850,1900	Voice	Yes	BT	No
WCDMA	Band V, Band II	Voice	Yes	BT	No
BT	2450	Data	No	GSM, WCDMA	No

Note:

1. (*): The voice function maybe be activated via 3rd party software application.
2. Per KDB 285076 D01 7(a), during RF test, concurrent transmission is disabled.



3.2 Product Photos

Refer to Appendix D.

3.3 Applied Standards

The ANSI Standard ANSI C63.19-2007 represents performance requirements for acceptable interoperability of hearing aids with wireless communications devices. When these parameters are met, a hearing aid operates acceptably in close proximity to a wireless communications device.

The following AWF factors shall be used for the standard transmission protocols:

Standard	Technology	AWF (dB)
TIA/EIA/IS-2000	CDMA	0
TIA/EIA-136	TDMA (50 Hz)	0
J-STD-007	GSM (217)	-5
T1/T1P1/3GPP	UMTS (WCDMA)	0
iDENTM	TDMA (22 and 11 Hz)	0

Table 3.1 Articulation Weighting Factor (AWF)

Category	Telephone RF Parameters		
	Near Field	AWF	
			E-Field Emissions
			H-Field Emissions
< 960 MHz			
Category M1	0	631.0 – 1122.0	V/m 1.91 – 3.39 A/m
	-5	473.2 – 841.4	V/m 1.43 – 2.54 A/m
Category M2	0	354.8 – 631.0	V/m 1.07 – 1.91 A/m
	-5	266.1 – 473.2	V/m 0.80 – 1.43 A/m
Category M3	0	199.5 – 354.8	V/m 0.6 – 1.07 A/m
	-5	149.6 – 266.1	V/m 0.45 – 0.80 A/m
Category M4	0	< 199.5	V/m < 0.60 A/m
	-5	< 149.6	V/m < 0.45 A/m
> 960 MHz			
Category M1	0	199.5 – 354.8	V/m 0.60 – 1.07 A/m
	-5	149.6 – 266.1	V/m 0.45 – 0.80 A/m
Category M2	0	112.2 – 199.5	V/m 0.34 – 0.60 A/m
	-5	84.1 – 149.6	V/m 0.25 – 0.45 A/m
Category M3	0	63.1 – 112.2	V/m 0.19 – 0.34 A/m
	-5	47.3 – 84.1	V/m 0.14 – 0.25 A/m
Category M4	0	< 63.1	V/m < 0.19 A/m
	-5	< 47.3	V/m < 0.14 A/m

Table 3.2 Telephone near-field categories in linear units



3.4 Test Conditions

3.4.1 Ambient Condition

Ambient Temperature	20 to 24 °C
Humidity	< 60 %

3.4.2 Test Configuration

The device was controlled by using a base station emulator R&S CMU200. Communication between the device and the emulator was established by air link. Measurements were performed on the low, middle and high channels of both bands. The DUT was set from the emulator to radiate maximum output power during all tests.



4. Hearing Aid Compliance (HAC)

4.1 Introduction

The federal communication commission (FCC) adopted ANSI C63.19 as HAC test standard.

5. HAC RF Emission Measurement Setup

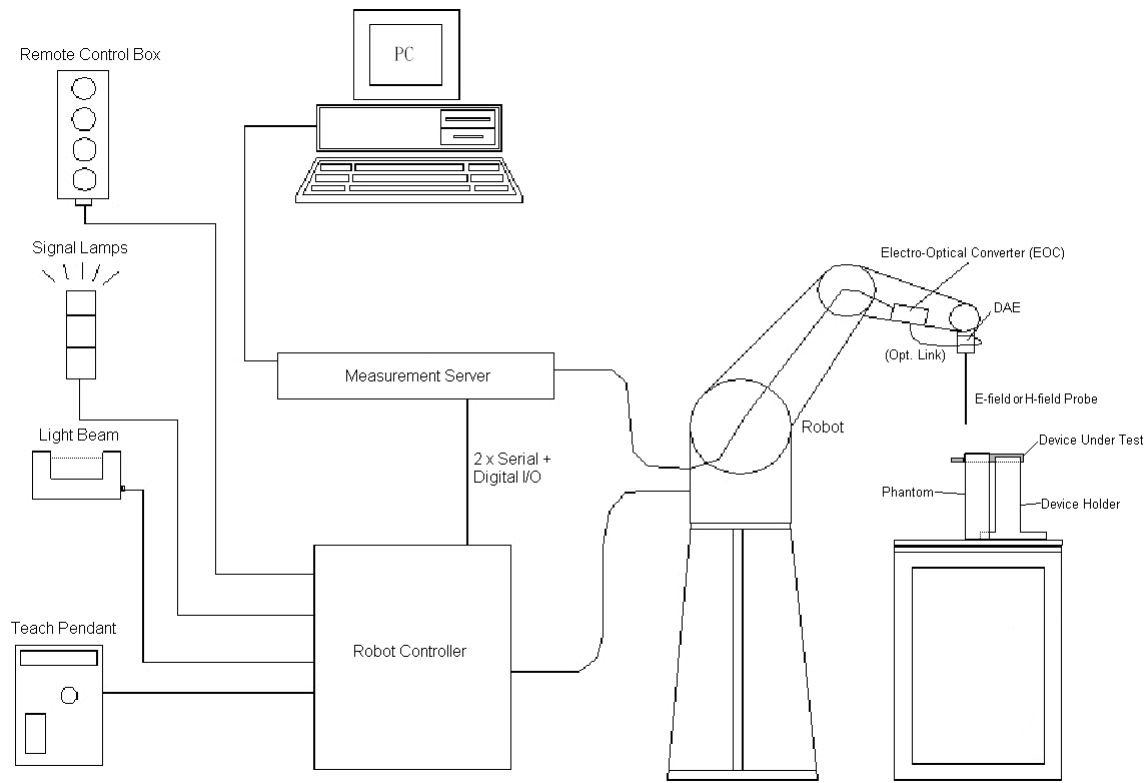


Fig 5.1 SPEAG DASY4 or DASY5 System Configurations

The DASY4 or DASY5 system for performance compliance tests is illustrated above graphically. This system consists of the following items:

- A standard high precision 6-axis robot with controller, a teach pendant and software
- A data acquisition electronic (DAE) attached to the robot arm extension
- A dosimetric probe equipped with an optical surface detector system
- The electro-optical converter (EOC) performs the conversion between optical and electrical signals
- A measurement server performs the time critical tasks such as signal filtering, control of the robot operation and fast movement interrupts.
- A probe alignment unit which improves the accuracy of the probe positioning
- A computer operating Windows XP
- DASY4 or DASY5 software
- Remote control with teach pendant and additional circuitry for robot safety such as warning lamps, etc.
- A device holder
- Dipole for evaluating the proper functioning of the system
- Test Arch Phantom

Detail component information are described in the following sub-clauses.

5.1 E-Field and H-Field Probe System

The HAC measurement is conducted with the dosimetric probe ER3DV6 and H3DV6 (manufactured by SPEAG). The probe is specially designed and calibrated. This probe has a built in optical surface detection system to prevent from collision with DUT.

5.1.1 E-Field Probe Specification

<ER3DV6>

Construction	One dipole parallel, two dipoles normal to probe axis Built-in shielding against static charges
Calibration	In air from 100 MHz to 3.0 GHz (absolute accuracy $\pm 6.0\%$, $k=2$)
Frequency	100 MHz to 6 GHz; Linearity: ± 2.0 dB (100 MHz to 3 GHz)
Directivity	± 0.2 dB in air (rotation around probe axis) ± 0.4 dB in air (rotation normal to probe axis)
Dynamic Range	2 V/m to 1000 V/m (M3 or better device readings fall well below diode compression point)
Linearity	± 0.2 dB
Dimensions	Overall length: 330 mm (Tip: 16 mm) Tip diameter: 8 mm (Body: 12 mm) Distance from probe tip to dipole centers: 2.5 mm



Fig 5.2 Photo of E-field Probe

5.1.2 H-Field Probe Description

<H3DV6>

Construction	Three concentric loop sensors with 3.8 mm loop diameters Resistively loaded detector diodes for linear response Built-in shielding against static charges
Frequency	200 MHz to 3 GHz (absolute accuracy $\pm 6.0\%$, $k=2$); Output linearized
Directivity	± 0.25 dB (spherical isotropy error)
Dynamic Range	10 m A/m to 2 A/m at 1 GHz (M3 or better device readings fall well below diode compression point)
Dimensions	Overall length: 330 mm (Tip: 40 mm) Tip diameter: 6 mm (Body: 12 mm) Distance from probe tip to dipole centers: 3 mm
E-Field Interference	$< 10\%$ at 3 GHz (for plane wave)



Fig 5.3 Photo of H-field Probe

5.1.3 Probe Tip Description

HAC field measurements take place in the close near field with high gradients. Increasing the measuring distance from the source will generally decrease the measured field values (in case of the validation dipole approx. 10% per mm).

Magnetic field sensors are measuring the integral of the H-field across their sensor area surrounded by the loop. They are calibrated in a precise, homogeneous field. When measuring a gradient field, the result will be very close to the field in the center of the loop which is equivalent to the value of a homogeneous field equivalent to the center value. But it will be different from the field at the field at the border of the loop.

Consequently, two sensors with different loop diameters – both calibrated ideally – would give different results when measuring from the edge of the probe sensor elements. The behavior for electrically small E-field sensors is equivalent. See below for distance plots from a WD which show the conservative nature of field readings at the probe element center vs. measurements at the sensor end:

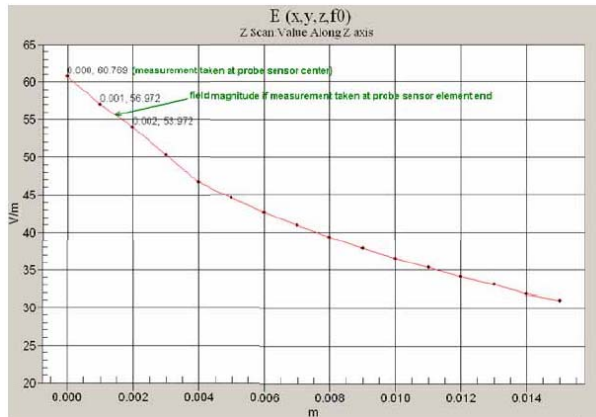


Fig 5.4 Z-Axis Scan at maximum point above a typical wireless device for E-field

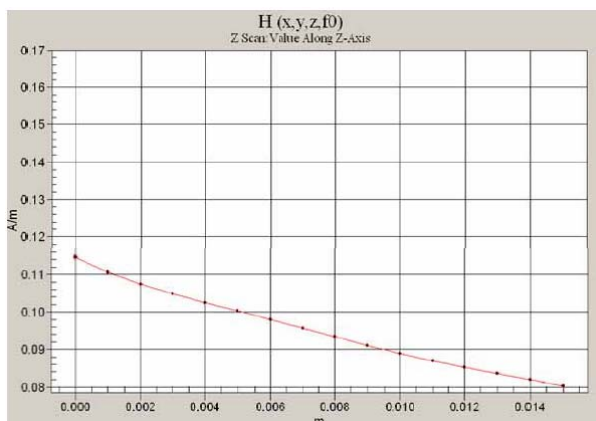


Fig 5.5 Z-Axis Scan at maximum point above a typical wireless device for H-field

The magnetic field loops of the H3D probes are concentric, with the center 3mm from the tip for H3DV6. Their radius is 1.9 mm.

The electric field probes have a more irregular internal geometry because it is physically not possible to have the 3 orthogonal sensors situated with the same center. The effect of the different sensor centers is accounted for in the HAC uncertainty budget ("sensor displacement"). Their geometric center is at 2.5 mm from the tip, and the element ends are 1.1 mm closer to the tip.

Where:

Peak Field = Peak field (in dB V/m or dB A/m)

Raw = Raw field measurement from the measurement system (in V/m or A/m).

PMF = Probe Modulation Factor (in Linear units). See Chapter 8 of test report.

5.2 DATA Acquisition Electronics (DAE)

The data acquisition electronics (DAE) consists of a highly sensitive electrometer-grade preamplifier with auto-zeroing, a channel and gain-switching multiplexer, a fast 16 bit AD-converter and a command decoder and control logic unit. Transmission to the measurement server is accomplished through an optical downlink for data and status information as well as an optical uplink for commands and the clock.

The input impedance of the DAE is 200 MOhm; the inputs are symmetrical and floating. Common mode rejection is above 80 dB.



Fig 5.6 Photo of DAE

5.3 Robot

The SPEAG DASY system uses the high precision robots (DASY5: TX90XL) type from Stäubli SA (France). For the 6-axis controller system, the robot controller version (DASY5: CS8c) from Stäubli is used. The Stäubli robot series have many features that are important for our application:

- High precision (repeatability ± 0.035 mm)
- High reliability (industrial design)
- Jerk-free straight movements
- Low ELF interference (the closed metallic construction shields against motor control fields)
- 6-axis controller



Fig 5.7 Photo of DASY5

5.4 Measurement Server

The measurement server is based on a PC/104 CPU board with CPU (DASY5: 400 MHz, Intel Celeron), chipdisk (DASY5: 128 MB), RAM (DASY5: 128 MB). The necessary circuits for communication with the DAE electronic box, as well as the 16 bit AD converter system for optical detection and digital I/O interface are contained on the DASY I/O board, which is directly connected to the PC/104 bus of the CPU board.

The measurement server performs all the real-time data evaluation for field measurements and surface detection, controls robot movements and handles safety operations.



Fig 5.8 Photo of Server for DASY5

5.5 Phone Positioner

The phone positioner shown in Fig. 5.11 is used to adjust DUT to the suitable position.



Fig 5.9 Phone Positioner

5.6 Test Arch Phantom


<p>Construction :</p>	<p>Enables easy and well defined positioning of the phone and validation dipoles as well as simple teaching of the robot.</p>	
<p>Dimensions :</p>	<p>370 x 370 x 370 mm</p>	

Fig 5.10 Photo of Arch Phantom

5.7 Data Storage and Evaluation

5.7.1 Data Storage

The DASY software stores the assessed data from the data acquisition electronics as raw data (in microvolt readings from the probe sensors), together with all the necessary software parameters for the data evaluation (probe calibration data, and device frequency and modulation data) in measurement files. The post-processing software evaluates the desired unit and format for output each time the data is visualized or exported. This allows verification of the complete software setup even after the measurement and allows correction of erroneous parameter settings.

5.7.2 Data Evaluation

The DASY post-processing software (SEMCAD) automatically executes the following procedures to calculate the field units from the microvolt readings at the probe connector. The parameters used in the evaluation are stored in the configuration modules of the software :

Probe parameters :	- Sensitivity	Norm _i , a _{i0} , a _{i1} , a _{i2}
	- Conversion factor	ConvF _i
	- Diode compression point	dcp _i
Device parameters :	- Frequency	f
	- Crest factor	cf
Media parameters :	- Conductivity	σ
	- Density	ρ

These parameters must be set correctly in the software. They can be found in the component documents or they can be imported into the software from the configuration files issued for the DASY components. In the direct measuring mode of the multi-meter option, the parameters of the actual system setup are used. In the scan visualization and export modes, the parameters stored in the corresponding document files are used.

The first step of the evaluation is a linearization of the filtered input signal to account for the compression characteristics of the detector diode. The compensation depends on the input signal, the diode type and the DC-transmission factor from the diode to the evaluation electronics. If the exciting field is pulsed, the crest factor of the signal must be known to correctly compensate for peak power. The formula for each channel can be given as :

$$V_i = U_i + U_i^2 \cdot \frac{cf}{dcp_i}$$

with V_i = compensated signal of channel i , ($i = x, y, z$)
 U_i = input signal of channel i , ($i = x, y, z$)
cf = crest factor of exciting field (DASY parameter)
dcp _{i} = diode compression point (DASY parameter)

From the compensated input signals, the primary field data for each channel can be evaluated :

$$\text{E-field Probes : } \mathbf{E}_i = \sqrt{\frac{V_i}{\text{Norm}_i \cdot \text{ConvF}}}$$

$$\text{H-field Probes : } \mathbf{H}_i = \sqrt{V_i} \cdot \frac{a_{i0} + a_{i1}f + a_{i2}f^2}{f}$$

with V_i = compensated signal of channel i , ($i = x, y, z$)
 Norm_i = sensor sensitivity of channel i , ($i = x, y, z$), $\mu\text{V}/(\text{V}/\text{m})^2$ for E-field Probes
 ConvF = sensitivity enhancement in solution
 a_{ij} = sensor sensitivity factors for H-field probes
 f = carrier frequency [GHz]
 E_i = electric field strength of channel i in V/m
 H_i = magnetic field strength of channel i in A/m

The RSS value of the field components gives the total field strength (Hermitian magnitude) :

$$\mathbf{E}_{\text{tot}} = \sqrt{\mathbf{E}_x^2 + \mathbf{E}_y^2 + \mathbf{E}_z^2}$$

The primary field data are used to calculate the derived field units.

The measurement/integration time per point, as specified by the system manufacturer is > 500 ms. The signal response time is evaluated as the time required by the system to reach 90% of the expected final value after an on/off switch of the power source with an integration time of 500 ms and a probe response time of < 5 ms. In the current implementation, DASYS waits longer than 100 ms after having reached the grid point before starting a measurement, i.e., the response time uncertainty is negligible.

If the device under test does not emit a CW signal, the integration time applied to measure the electric field at a specific point may introduce additional uncertainties due to the discretization. The tolerances for the different systems had the worst-case of 2.6%.



5.8 Test Equipment List

Manufacturer	Name of Equipment	Type/Model	Serial Number	Calibration	
				Last Cal.	Due Date
SPEAG	Dipole	CD835V3	1184	April. 11, 2012	April. 10, 2013
SPEAG	Dipole	CD1880V3	1170	April. 11, 2012	April. 10, 2013
SPEAG	Data Acquisition Electronics	DAE4	1303	Nov. 22, 2012	Nov. 21, 2013
SPEAG	Proble	ER3DV6	2302	Jun. 20, 2012	Jun. 19, 2013
SPEAG	Proble	H3DV6	6305	Jan. 11, 2013	Jan. 10, 2014
SPEAG	Test Arch Phantom	Par phantom	1105	NCR	NCR
SPEAG	Phone Positioner	N/A	N/A	NCR	NCR
R&S	Universal Radio Communication Tester	CMU200	102049	Jun. 29, 2012	Jun. 28, 2013
Agilent	Wireless Communication Test Set	E5515C	MY50267224	Dec. 29, 2012	Dec. 28, 2013
AR	Amplifier	551G4	333096	NCR	NCR
Anritsu	Power Meter	ML2495A	1218010	May 07, 2012	May 06, 2013
Anritsu	Power Sensor	MA2411B	1207253	May 08, 2012	May 07, 2013
ARRA	Power Divider	A3200-2	N/A	NA	NA
MCL	Attenuation	BW-S10W5	N/A	NA	NA
R&S	Spectrum Analyzer	FSP30	101400	Jun. 01, 2012	May 31, 2013

Table 5.1 Test Equipment List

6. Uncertainty Assessment

The component of uncertainty may generally be categorized according to the methods used to evaluate them. The evaluation of uncertainty by the statistical analysis of a series of observations is termed a Type A evaluation of uncertainty. The evaluation of uncertainty by means other than the statistical analysis of a series of observation is termed a Type B evaluation of uncertainty. Each component of uncertainty, however evaluated, is represented by an estimated standard deviation, termed standard uncertainty, which is determined by the positive square root of the estimated variance.

A Type A evaluation of standard uncertainty may be based on any valid statistical method for treating data. This includes calculating the standard deviation of the mean of a series of independent observations; using the method of least squares to fit a curve to the data in order to estimate the parameter of the curve and their standard deviations; or carrying out an analysis of variance in order to identify and quantify random effects in certain kinds of measurement.

A type B evaluation of standard uncertainty is typically based on scientific judgment using all of the relevant information available. These may include previous measurement data, experience and knowledge of the behavior and properties of relevant materials and instruments, manufacture’s specification, data provided in calibration reports and uncertainties assigned to reference data taken from handbooks. Broadly speaking, the uncertainty is either obtained from an outdoor source or obtained from an assumed distribution, such as the normal distribution, rectangular or triangular distributions indicated in Table 6.1.

Uncertainty Distributions	Normal	Rectangular	Triangular	U-Shape
Multi-plying Factor ^(a)	1/k ^(b)	1/√3	1/√6	1/√2

(a) standard uncertainty is determined as the product of the multiplying factor and the estimated range of variations in the measured quantity

(b) κ is the coverage factor

Table 6.1 Multiplying Factions for Various Distributions

The combined standard uncertainty of the measurement result represents the estimated standard deviation of the result. It is obtained by combining the individual standard uncertainties of both Type A and Type B evaluation using the usual “root-sum-squares” (RSS) methods of combining standard deviations by taking the positive square root of the estimated variances.

Expanded uncertainty is a measure of uncertainty that defines an interval about the measurement result within which the measured value is confidently believed to lie. It is obtained by multiplying the combined standard uncertainty by a coverage factor. Typically, the coverage factor ranges from 2 to 3. Using a coverage factor allows the true value of a measured quantity to be specified with a defined probability within the specified uncertainty range. For purpose of this document, a coverage factor two is used, which corresponds to confidence interval of about 95 %. The DASY uncertainty Budget is showed in Table 6.2.



Error Description	Uncertainty Value (±%)	Probability Distribution	Divisor	Ci (E)	Ci (H)	Standard Uncertainty (E)	Standard Uncertainty (H)
Measurement System							
Probe Calibration	5.1	Normal	1	1	1	± 5.1 %	± 5.1 %
Axial Isotropy	4.7	Rectangular	√3	1	1	± 2.7 %	± 2.7 %
Sensor Displacement	16.5	Rectangular	√3	1	0.145	± 9.5 %	± 1.4 %
Test Arch	7.2	Rectangular	√3	1	0	± 4.1 %	± 0.0 %
Linearity	4.7	Rectangular	√3	1	1	± 2.7 %	± 2.7 %
Scaling to Peak Envelope Power	0.0	Rectangular	√3	1	1	± 0.0 %	± 0.0 %
System Detection Limit	1.0	Rectangular	√3	1	1	± 0.6 %	± 0.6 %
Readout Electronics	0.3	Normal	1	1	1	± 0.3 %	± 0.3 %
Response Time	0.8	Rectangular	√3	1	1	± 0.5 %	± 0.5 %
Integration Time	2.6	Rectangular	√3	1	1	± 1.5 %	± 1.5 %
RF Ambient Conditions	3.0	Rectangular	√3	1	1	± 1.7 %	± 1.7 %
RF Reflections	12.0	Rectangular	√3	1	1	± 6.9 %	± 6.9 %
Probe Positioner	1.2	Rectangular	√3	1	0.67	± 0.7 %	± 0.5 %
Probe Positioning	4.7	Rectangular	√3	1	0.67	± 2.7 %	± 1.8 %
Extrap. and Interpolation	1.0	Rectangular	√3	1	1	± 0.6 %	± 0.6 %
Test Sample Related							
Device Positioning Vertical	4.7	Rectangular	√3	1	0.67	± 2.7 %	± 1.8 %
Device Positioning Lateral	1.0	Rectangular	√3	1	1	± 0.6 %	± 0.6 %
Device Holder and Phantom	2.4	Rectangular	√3	1	1	± 1.4 %	± 1.4 %
Power Drift	5.0	Rectangular	√3	1	1	± 2.9 %	± 2.9 %
Phantom and Setup Related							
Phantom Thickness	2.4	Rectangular	√3	1	0.67	± 1.4 %	± 0.9 %
Combined Standard Uncertainty						± 15.2 %	± 10.8 %
Coverage Factor for 95 %						K = 2	
Expanded Uncertainty						± 30.4 %	± 21.6 %

Table 6.2 Uncertainty Budget of DASYS

7. HAC RF Emission Measurement Evaluation

Each DASY system is equipped with one or more system validation kits. These units, together with the predefined measurement procedures within the DASY software, enable the user to conduct the system performance check and system validation. System validation kit includes a dipole, tripod holder to fix it underneath the test Arch and a corresponding distance holder.

7.1 Purpose of System Performance Check

The system performance check verifies that the system operates within its specifications. System and operator errors can be detected and corrected. It is recommended that the system performance check be performed prior to any usage of the system in order to guarantee reproducible results. The system performance check uses normal HAC measurements in a simplified setup with a well characterized source. This setup was selected to give a high sensitivity to all parameters that might fail or vary over time. The system check does not intend to replace the calibration of the components, but indicates situations where the system uncertainty is exceeded due to drift or failure.

7.2 System Setup

In the simplified setup for system evaluation, the DUT is replaced by a calibrated dipole and the power source is replaced by a continuous wave which comes from a signal generator. The calibrated dipole must be placed beneath the arch phantom. The equipment setup is shown below:

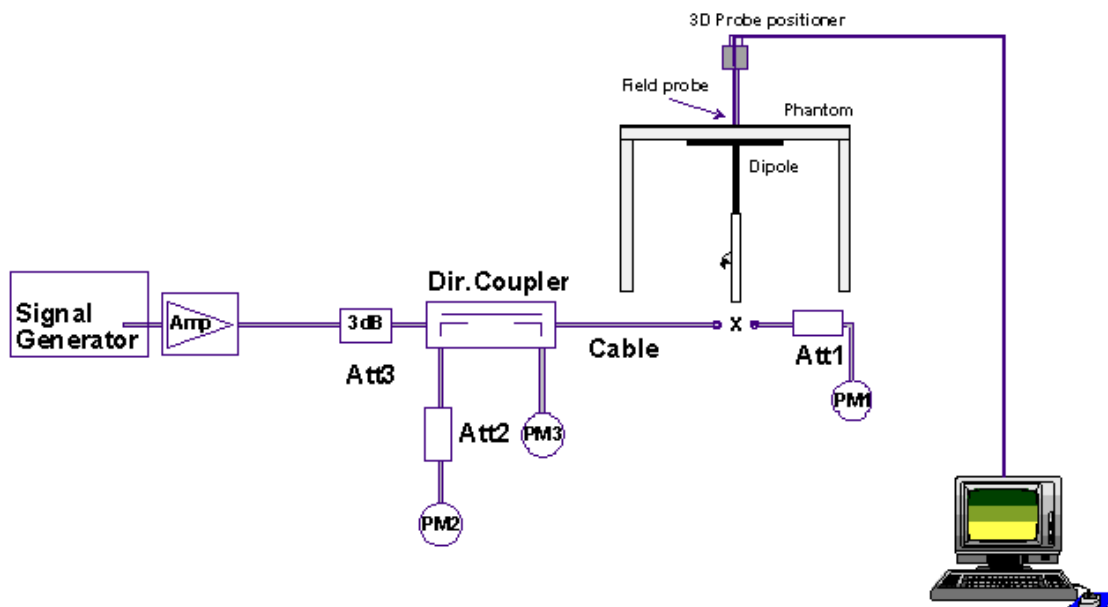


Fig. 7.1 System Setup of System Evaluation

1. Signal Generator
2. Amplifier
3. Directional Coupler
4. Power Meter
5. Calibrated Dipole

The output power on dipole port must be calibrated to 20dBm (100mW) before dipole is connected.

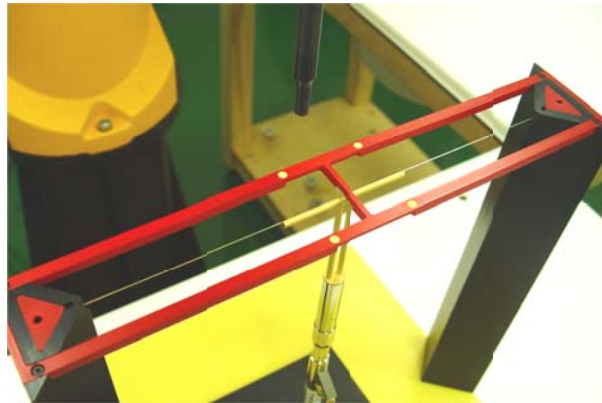


Fig 7.2 Dipole Setup

7.3 Validation Results

Comparing to the original E-field or H-field value provided by SPEAG, the validation data should be within its specification of 25 %. Table 7.1 shows the target value and measured value. The table below indicates the system performance check can meet the variation criterion and the plots can be referred to appendix A of this report.

Frequency (MHz)	Input Power (dBm)	Target Value (V/m)	E-Field 1 (V/m)	E-Field 2 (V/m)	Average Value (V/m)	Deviation (%)	Date
835	20	167.5	166.3	150.8	158.55	-5.34	Mar 28, 2013
1880	20	141.3	136.7	128.7	132.7	-6.09	Mar 28, 2013
Frequency (MHz)	Input Power (dBm)	Target Value (A/m)	H-Field (A/m)		Deviation (%)	Date	
835	20	0.459	0.450		-1.96	Mar 28, 2013	
1880	20	0.469	0.463		-1.28	Mar 28, 2013	

Table 7.1 Test Results of System Validation

Note: Deviation = ((E or H-field Result) - (Target field)) / (Target field) * 100%

8. RF Field Probe Modulation Factor

A calibration shall be made of the modulation response of the probe and its instrumentation chain. This calibration shall be performed with the field probe, attached to the instrumentation that is to be used with it during the measurement. The response of the probe system to a CW field at the frequency(s) of interest is compared to its response to a modulated signal with equal peak amplitude. The field level of the test signals shall be more than 10 dB above the ambient level and the noise floor of the instrumentation being used. The ratio of the CW reading to that taken with a modulated field shall be applied to the readings taken of modulated fields of the specified type.

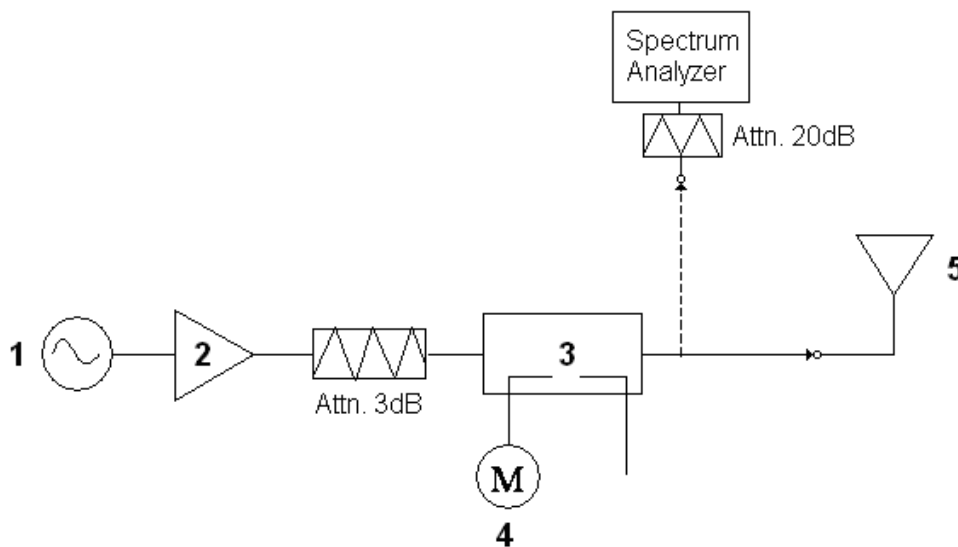


Fig. 8.1 System Calibration

This was done using the following procedure:

1. Fixing the probe in a set location relative to a field generating device.
2. Illuminate the probe with a CW signal at the intended measurement frequency.
3. Record the reading of the probe measurement system of the CW signal.
4. Determine the level of the CW signal being used to drive the field generating device.
5. Substitute a signal using the same modulation as that used by the intended WD for the CW signal.
6. Set the peak amplitude during transmission of the modulated signal to equal the amplitude of the CW signal.
7. Record the reading of the probe measurement system of the modulated signal.
8. The ratio of the CW to modulated signal reading is the modulation factor.
9. Repeat 2~8 steps at intended measurement frequency for both E and H field probe.



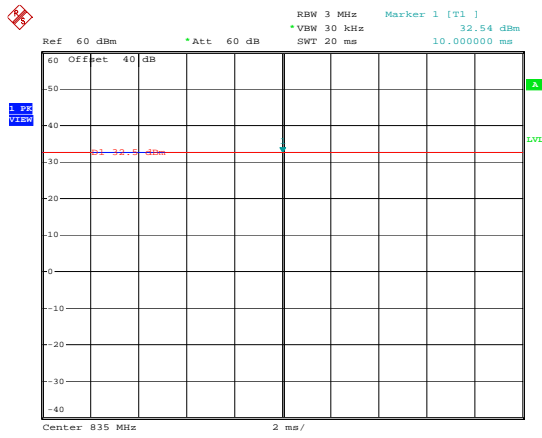
PMF Measurement Summary:

Frequency (MHz)	Functions	E-field	H-field	PMF	
		V/m	A/m	E-field	H-field
835	CW	839.9	6.669	-	-
835	GSM	291.4	2.399	2.88	2.78
1880	CW	521.3	3.818	-	-
1880	GSM	196.4	1.521	2.65	2.51

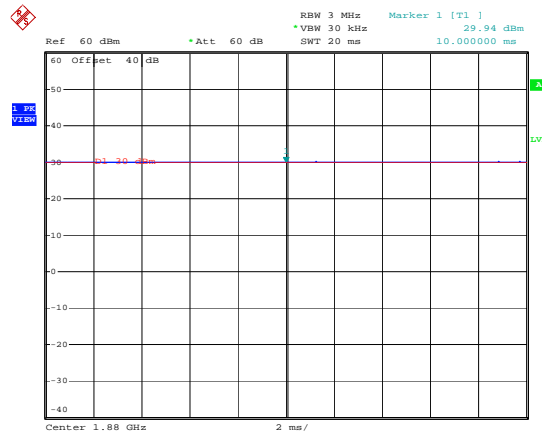
Frequency (MHz)	Functions	E-field	H-field	PMF	
		V/m	A/m	E-field	H-field
835	CW	321.1	0.774	-	-
835	WCDMA	314.2	0.815	1.02	0.95
1880	CW	312.5	1.111	-	-
1880	WCDMA	322.5	1.221	0.97	0.91



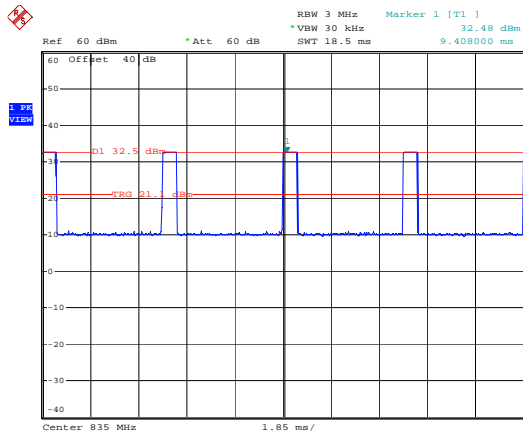
Zero span Spectrum Plots for RF Field Probe Modulation Factor



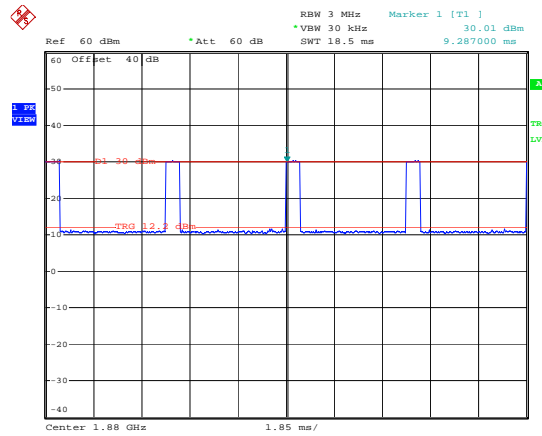
835MHz - CW



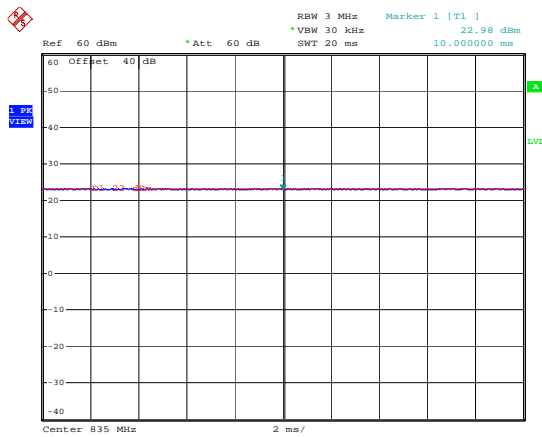
1880MHz - CW



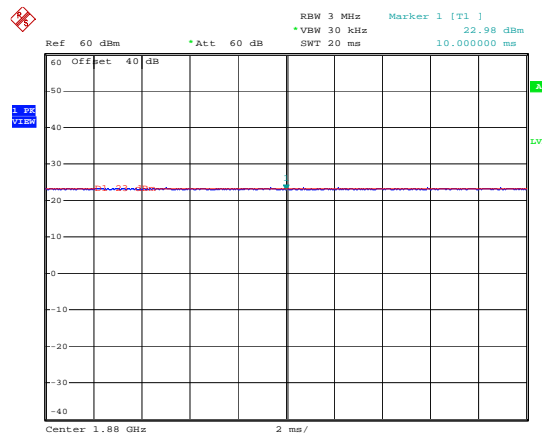
835MHz - GSM



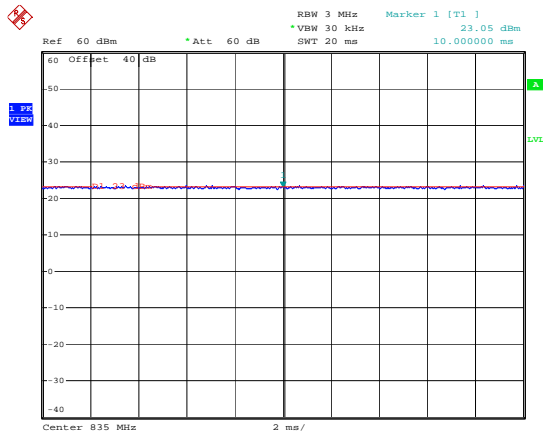
1880MHz - GSM



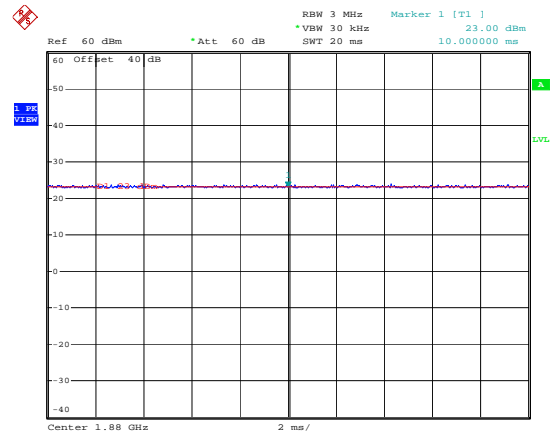
835MHz - CW



1880MHz - CW



835MHz - WCDMA



1880MHz - WCDMA

9. Description for DUT Testing Position

The DUT was put on device holder and adjusted to the accurate and reliable position. Please refer to Appendix E for the Setup photographs.

Fig. 9.1 illustrate the references and reference plane that shall be used in a typical DUT emissions measurement. The principle of this section is applied to DUT with similar geometry.

- The grid is 5 cm by 5 cm area that is divided into 9 evenly sized blocks or sub-grids.
- The grid is centered on the audio frequency output transducer of the DUT.
- The grid is in a reference plane, which is defined as the planar area that contains the highest point in the area of the phone that normally rests against the user's ear. It is parallel to the centerline of the receiver area of the phone and is defined by the points of the receiver-end of the DUT handset, which, in normal handset use, rest against the ear.
- The measurement plane is parallel to, and 15 mm in front of, the reference plane.



Fig 9.1 A typical DUT reference and plane for HAC measurements

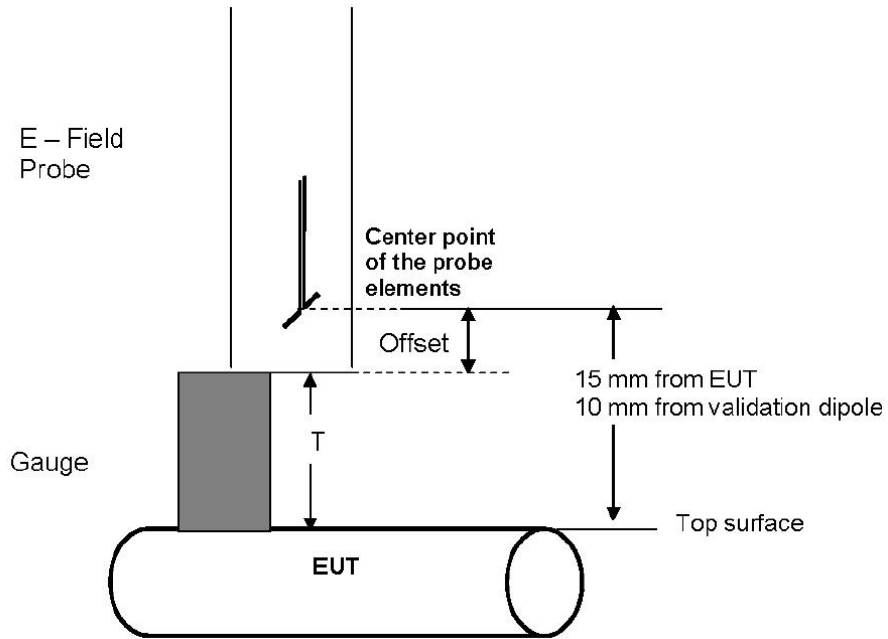


Fig. 9.2 Gauge block with E-field probe

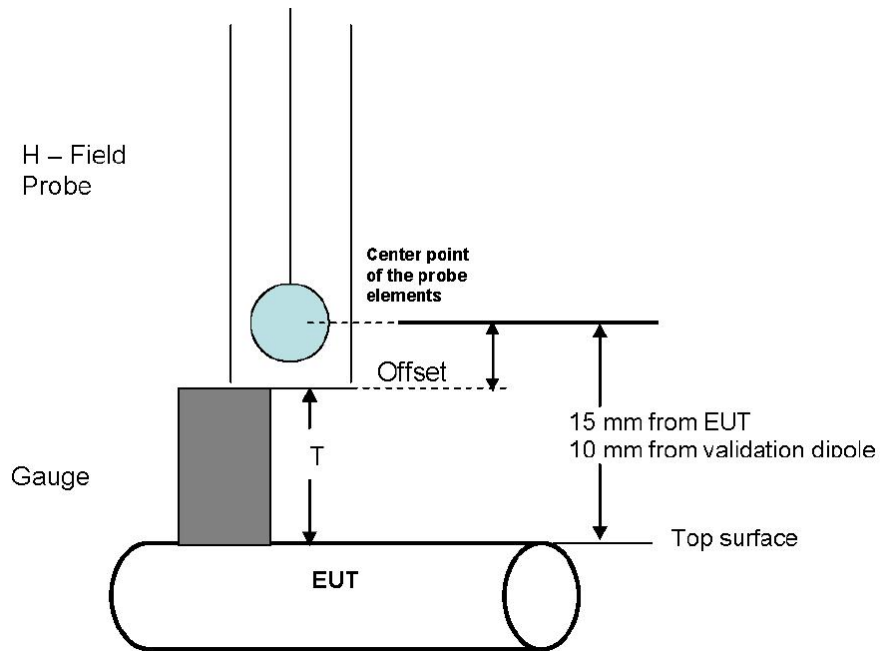


Fig. 9.3 Gauge block with H-field probe



10. RF Emissions Test Procedure

The following illustrate a typical RF emissions test scan over a wireless communications device:

1. Proper operation of the field probe, probe measurement system, other instrumentation, and the positioning system was confirmed.
2. DUT is positioned in its intended test position, acoustic output point of the device perpendicular to the field probe.
3. The DUT operation for maximum rated RF output power was configured and confirmed with the base station simulator, at the test channel and other normal operating parameters as intended for the test. The battery was ensured to be fully charged before each test.
4. The center sub-grid was centered over the center of the acoustic output (also audio band magnetic output, if applicable). The DUT audio output was positioned tangent (as physically possible) to the measurement plane.
5. A surface calibration was performed before each setup change to ensure repeatable spacing and proper maintenance of the measurement plane using the test Arch.
6. The measurement system measured the field strength at the reference location.
7. Measurements at 5 mm increments in the 5 x 5 cm region were performed and recorded. A 360° rotation about the azimuth axis at the maximum interpolated position was measured. For the worst-case condition, the peak reading from this rotation was used in re-evaluating the HAC category.
8. The system performed a drift evaluation by measuring the field at the reference location.
9. Steps 1 ~ 8 were done for both the E and H-Field measurements.



11. HAC RF Emission Test Results

11.1 Conducted Power (Unit: dBm)

For Sample 1

<GSM>

Burst Average Power						
Band	GSM850			GSM1900		
Channel	128	189	251	512	661	810
Frequency (MHz)	824.2	836.4	848.8	1850.2	1880.0	1909.8
GSM (GMSK, 1 Tx slot)	32.29	32.37	32.41	29.99	30.09	30.21
GPRS (GMSK, 1 Tx slot) – CS1	32.25	32.36	32.40	29.98	30.08	30.20
GPRS (GMSK, 2 Tx slots) – CS1	31.42	31.54	31.61	29.09	29.16	29.39

<WCDMA>

Band	WCDMA Band V			WCDMA Band II		
Channel	4132	4182	4233	9262	9400	9538
Frequency (MHz)	826.4	836.4	846.6	1852.4	1880.0	1907.6
AMR 12.2k	23.01	23.05	22.96	22.96	23.22	23.17
RMC 12.2k	23.03	23.08	22.95	22.98	23.25	23.21

For Sample 2

<GSM>

Burst Average Power						
Band	GSM850			GSM1900		
Channel	128	189	251	512	661	810
Frequency (MHz)	824.2	836.4	848.8	1850.2	1880.0	1909.8
GSM (GMSK, 1 Tx slot)	32.30	32.41	32.44	29.98	30.10	30.22
GPRS (GMSK, 1 Tx slot) – CS1	32.30	32.41	32.44	29.96	30.08	30.19
GPRS (GMSK, 2 Tx slots) – CS1	31.49	31.61	31.67	29.05	29.15	29.37

<WCDMA>

Band	WCDMA Band V			WCDMA Band II		
Channel	4132	4182	4233	9262	9400	9538
Frequency (MHz)	826.4	836.4	846.6	1852.4	1880.0	1907.6
AMR 12.2k	23.11	23.20	23.15	22.91	23.05	22.94
RMC 12.2k	23.12	23.21	23.17	22.92	23.07	22.97



For Sample 3

<GSM>

Burst Average Power						
Band	GSM850			GSM1900		
Channel	128	189	251	512	661	810
Frequency (MHz)	824.2	836.4	848.8	1850.2	1880.0	1909.8
GSM (GMSK, 1 Tx slot)	32.19	32.30	32.35	30.01	30.13	30.31
GPRS (GMSK, 1 Tx slot) – CS1	32.17	32.29	32.34	29.99	30.12	30.30
GPRS (GMSK, 2 Tx slots) – CS1	31.35	31.49	31.57	29.05	29.19	29.36

<WCDMA>

Band	WCDMA Band V			WCDMA Band II		
Channel	4132	4182	4233	9262	9400	9538
Frequency (MHz)	826.4	836.4	846.6	1852.4	1880.0	1907.6
AMR 12.2k	23.09	23.12	23.09	22.96	23.05	23.01
RMC 12.2k	23.12	23.15	23.10	22.99	23.06	22.99

11.2 E-Field Emission

Plot No.	Band	Mode	Channel	Sample	PMF	Peak E-Field (V/m)	M-Rating
1	GSM850	GSM	251	#1	2.88	123.4	M4
2	GSM850	GSM	251	#2	2.88	118.8	M4
3	GSM850	GSM	251	#3	2.88	114.1	M4
4	GSM1900	GSM	512	#1	2.65	76.428	M3
5	GSM1900	GSM	661	#1	2.65	71.882	M3
6	GSM1900	GSM	810	#1	2.65	66.997	M3
7	GSM1900	GSM	512	#2	2.65	76.42	M3
8	GSM1900	GSM	661	#2	2.65	68.858	M3
9	GSM1900	GSM	810	#2	2.65	65.915	M3
10	GSM1900	GSM	512	#3	2.65	78.004	M3
11	GSM1900	GSM	661	#3	2.65	76.975	M3
12	GSM1900	GSM	810	#3	2.65	72.795	M3
13	WCDMA V	RMC12.2K	4233	#1	1.02	51.97	M4
14	WCDMA V	RMC12.2K	4233	#2	1.02	49.306	M4
15	WCDMA V	RMC12.2K	4233	#3	1.02	45.823	M4
16	WCDMA II	RMC12.2K	9262	#1	0.97	33.561	M4
17	WCDMA II	RMC12.2K	9262	#2	0.97	29.711	M4
18	WCDMA II	RMC12.2K	9262	#3	0.97	30.787	M4



11.3 H-Field Emission

Plot No.	Band	Mode	Channel	Sample	PMF	Peak H-Field (A/m)	M-Rating
1	GSM850	GSM	251	#1	2.78	0.257	M4
2	GSM850	GSM	251	#2	2.78	0.247	M4
3	GSM850	GSM	251	#3	2.78	0.234	M4
4	GSM1900	GSM	512	#1	2.51	0.205	M3
5	GSM1900	GSM	661	#1	2.51	-	-
6	GSM1900	GSM	810	#1	2.51	-	-
7	GSM1900	GSM	512	#2	2.51	0.195	M3
8	GSM1900	GSM	661	#2	2.51	-	-
9	GSM1900	GSM	810	#2	2.51	-	-
10	GSM1900	GSM	512	#3	2.51	0.204	M3
11	GSM1900	GSM	661	#3	2.51	-	-
12	GSM1900	GSM	810	#3	2.51	-	-
13	WCDMA V	RMC12.2K	4233	#1	0.95	0.102	M4
14	WCDMA V	RMC12.2K	4233	#2	0.95	0.101	M4
15	WCDMA V	RMC12.2K	4233	#3	0.95	0.095	M4
16	WCDMA II	RMC12.2K	9262	#1	0.91	0.094	M4
17	WCDMA II	RMC12.2K	9262	#2	0.91	0.093	M4
18	WCDMA II	RMC12.2K	9262	#3	0.91	0.093	M4

Remark:

- 1. The volume was adjusted to maximum level and the backlight turned off during RF Emission testing.
- 2. There is no special HAC mode software on this DUT.
- 3. Test Engineer : Krin Wu



12. References

- [1] ANSI C63.19-2007, "American National Standard for Methods of Measurement of Compatibility between Wireless Communications Devices and Hearing Aids", 8 June 2007
- [2] SPEAG DASY System Handbook



Appendix A. Plots of System Performance Check

The plots are shown as follows.

HAC-RF_CD835V3_130328_E

DUT: HAC-Dipole 835 MHz

Communication System: CW; Frequency: 835 MHz; Duty Cycle: 1:1

Medium: Air Medium parameters used: $\sigma = 0$ mho/m, $\epsilon_r = 1$; $\rho = 0$ kg/m³

Ambient Temperature : 23.5 °C

DASY5 Configuration:

- Probe: ER3DV6 - SN2302; ConvF(1, 1, 1); Calibrated: 20.06.2012
- Electronics: DAE4 Sn1303; Calibrated: 22.11.2012
- Phantom: HAC Test Arch with AMCC; Type: SD HAC P01 BA;
- Measurement SW: DASY52, Version 52.8 (2); SEMCAD X Version 14.4.5 (3634)

E Scan - measurement distance from the probe sensor center to CD835 = 10mm/Hearing Aid Compatibility Test at 10mm distance (41x361x1): Measurement

grid: dx=5mm, dy=5mm

Maximum value of peak Total field = 166.3 V/m

Device Reference Point: 0, 0, -6.3 mm

Reference Value = 134.4 V/m; Power Drift = -0.03 dB

Hearing Aid Near-Field Category: M4 (AWF 0 dB)

Peak E-field in V/m

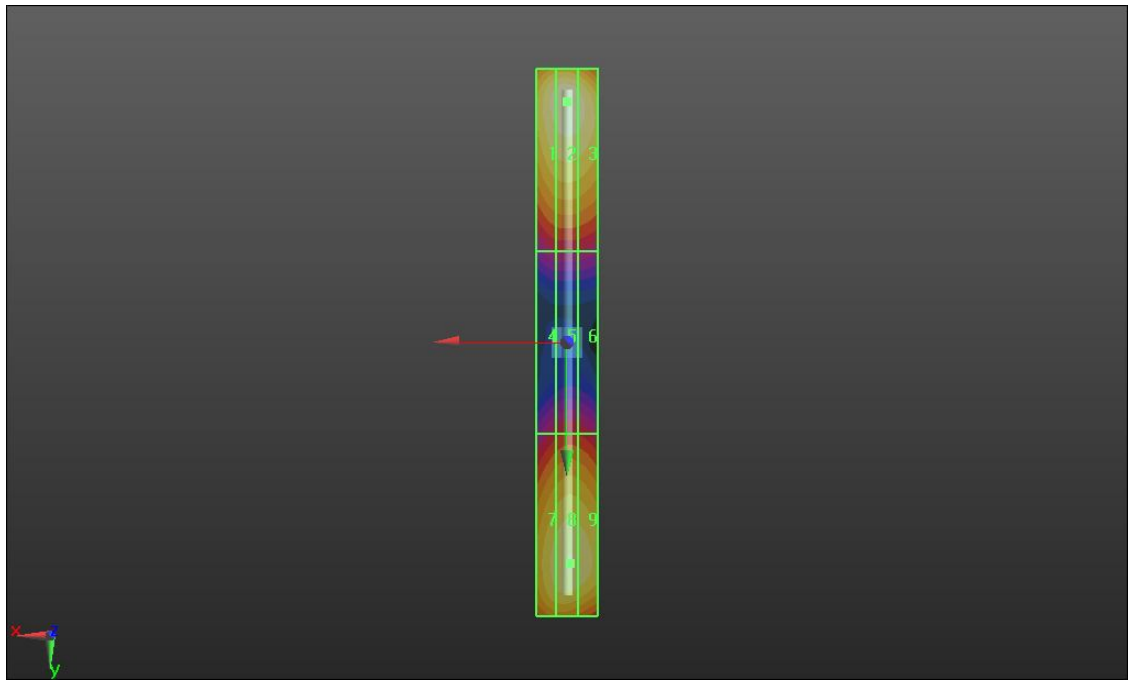
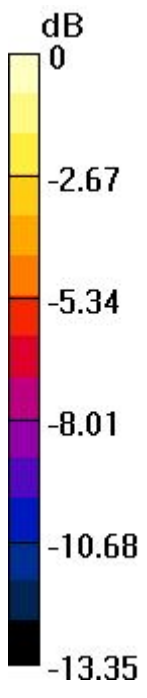
Grid 1 159.5 M4	Grid 2 166.3 M4	Grid 3 159.7 M4
Grid 4 78.514 M4	Grid 5 82.503 M4	Grid 6 81.344 M4
Grid 7 143.5 M4	Grid 8 150.8 M4	Grid 9 148.4 M4

Cursor:

Total = 166.3 V/m

E Category: M4

Location: 0, -79, 4.7 mm



0 dB = 166.3V/m

HAC-RF_CD835V3_130328_H

DUT: HAC-Dipole 835 MHz

Communication System: CW; Frequency: 835 MHz; Duty Cycle: 1:1

Medium: Air Medium parameters used: $\sigma = 0$ mho/m, $\epsilon_r = 1$; $\rho = 0$ kg/m³

Ambient Temperature : 23.5 °C

DASY5 Configuration:

- Probe: H3DV6 - SN6305; ; Calibrated: 11.01.2013
- Electronics: DAE4 Sn1303; Calibrated: 22.11.2012
- Phantom: HAC Test Arch with AMCC; Type: SD HAC P01 BA;
- Measurement SW: DASY52, Version 52.8 (2); SEMCAD X Version 14.4.5 (3634)

H Scan - measurement distance from the probe sensor center to CD835 Dipole = 10mm/Hearing Aid Compatibility Test (41x361x1): Measurement grid: dx=5mm, dy=5mm

Maximum value of peak Total field = 0.450 A/m

Device Reference Point: 0, 0, -6.3 mm

Reference Value = 0.502 A/m; Power Drift = -0.02 dB

Hearing Aid Near-Field Category: M4 (AWF 0 dB)

Peak H-field in A/m

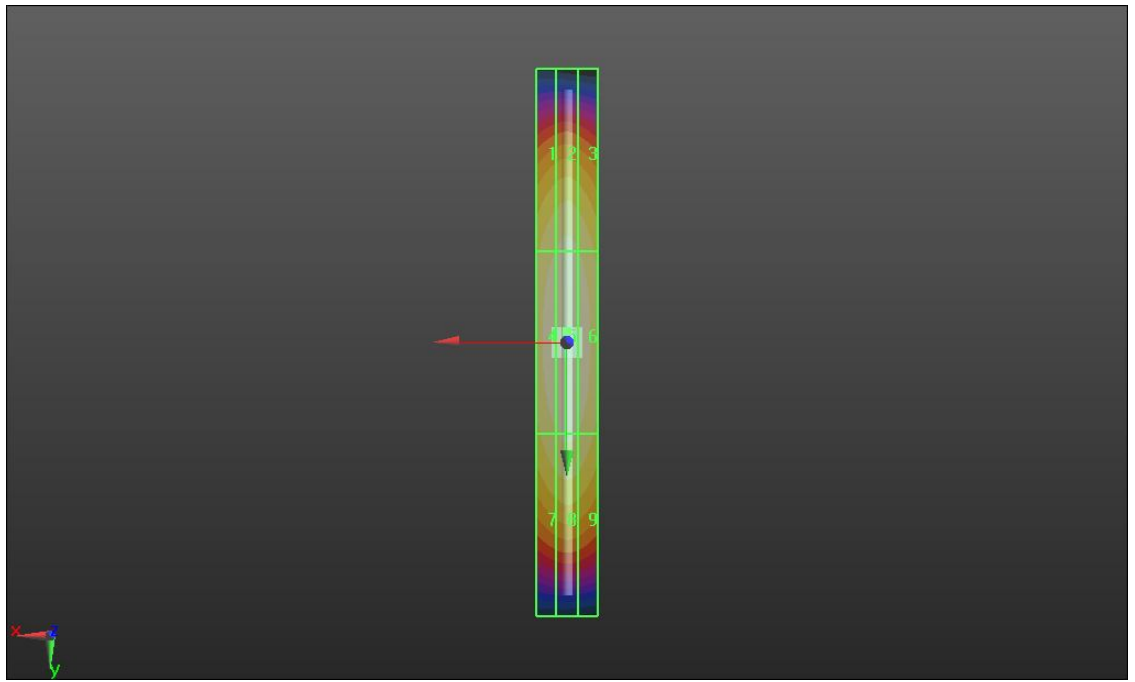
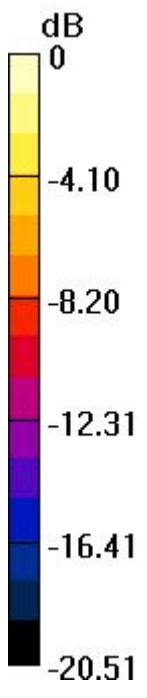
Grid 1	Grid 2	Grid 3
0.388 M4	0.404 M4	0.388 M4
Grid 4	Grid 5	Grid 6
0.433 M4	0.450 M4	0.433 M4
Grid 7	Grid 8	Grid 9
0.381 M4	0.397 M4	0.383 M4

Cursor:

Total = 0.450 A/m

H Category: M4

Location: 0, -3.5, 5.3 mm



0 dB = 0.450A/m

HAC-RF_CD1880V3_130328_E

DUT: HAC Dipole 1880 MHz

Communication System: CW; Frequency: 1880 MHz; Duty Cycle: 1:1

Medium: Air Medium parameters used: $\sigma = 0$ mho/m, $\epsilon_r = 1$; $\rho = 0$ kg/m³

Ambient Temperature : 23.5 °C

DASY5 Configuration:

- Probe: ER3DV6 - SN2302; ConvF(1, 1, 1); Calibrated: 20.06.2012
- Electronics: DAE4 Sn1303; Calibrated: 22.11.2012
- Phantom: HAC Test Arch with AMCC; Type: SD HAC P01 BA;
- Measurement SW: DASY52, Version 52.8 (2); SEMCAD X Version 14.4.5 (3634)

E Scan - measurement distance from the probe sensor center to CD1880 = 10mm/Hearing Aid Compatibility Test at 10mm distance (41x361x1): Measurement grid: dx=5mm, dy=5mm

Maximum value of peak Total field = 136.7 V/m

Device Reference Point: 0, 0, -6.3 mm

Reference Value = 148.9 V/m; Power Drift = 0.01 dB

Hearing Aid Near-Field Category: M2 (AWF 0 dB)

Peak E-field in V/m

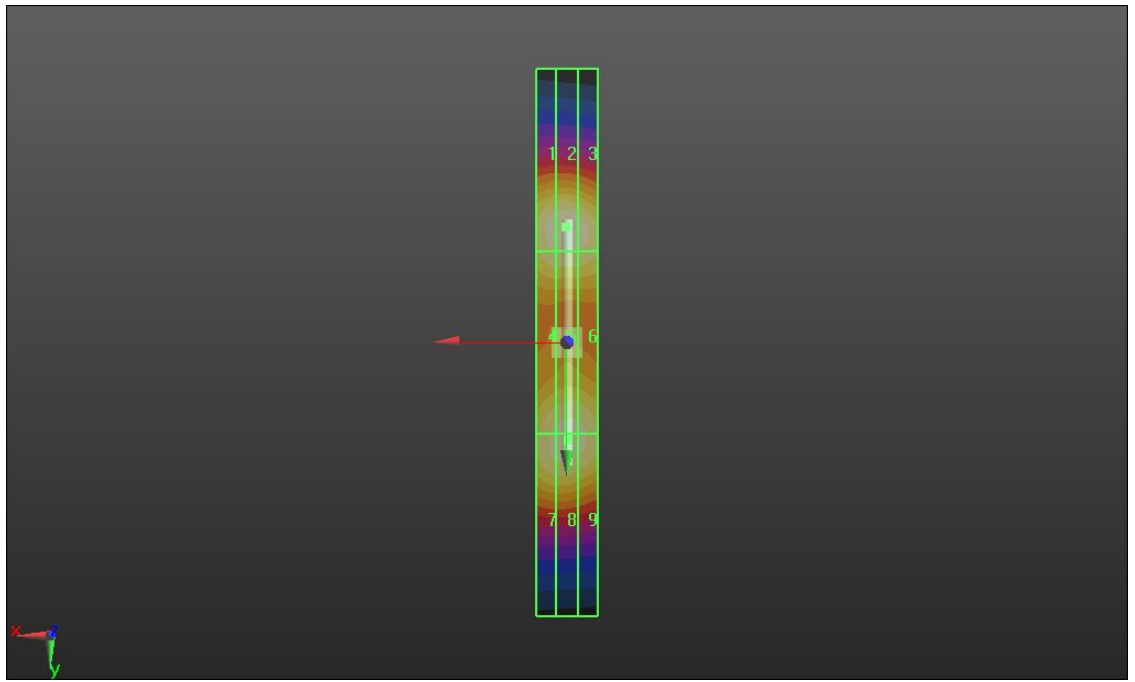
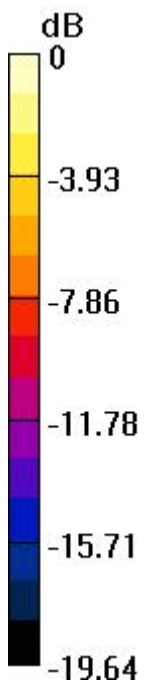
Grid 1 132.0 M2	Grid 2 136.7 M2	Grid 3 129.7 M2
Grid 4 122.4 M2	Grid 5 127.7 M2	Grid 6 125.0 M2
Grid 7 124.1 M2	Grid 8 128.7 M2	Grid 9 125.7 M2

Cursor:

Total = 136.7 V/m

E Category: M2

Location: 0.5, -38, 4.7 mm



0 dB = 136.7V/m

HAC-RF_CD1880V3_130328_H

DUT: HAC Dipole 1880 MHz

Communication System: CW; Frequency: 1880 MHz; Duty Cycle: 1:1

Medium: Air Medium parameters used: $\sigma = 0$ mho/m, $\epsilon_r = 1$; $\rho = 0$ kg/m³

Ambient Temperature : 23.5 °C

DASY5 Configuration:

- Probe: H3DV6 - SN6305; ; Calibrated: 11.01.2013
- Electronics: DAE4 Sn1303; Calibrated: 22.11.2012
- Phantom: HAC Test Arch with AMCC; Type: SD HAC P01 BA;
- Measurement SW: DASY52, Version 52.8 (2); SEMCAD X Version 14.4.5 (3634)

H Scan - measurement distance from the probe sensor center to CD1880 Dipole = 10mm/Hearing Aid Compatibility Test (41x361x1): Measurement grid: dx=5mm, dy=5mm

Maximum value of peak Total field = 0.463 A/m

Device Reference Point: 0, 0, -6.3 mm

Reference Value = 0.471 A/m; Power Drift = 0.0058 dB

Hearing Aid Near-Field Category: M2 (AWF 0 dB)

Peak H-field in A/m

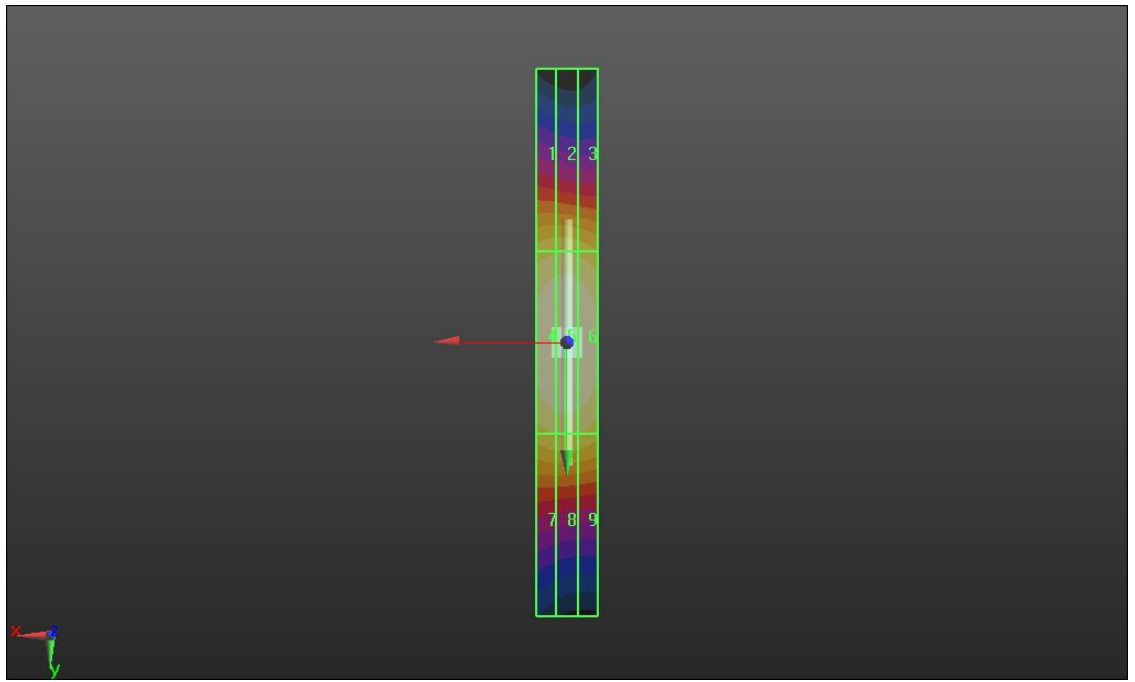
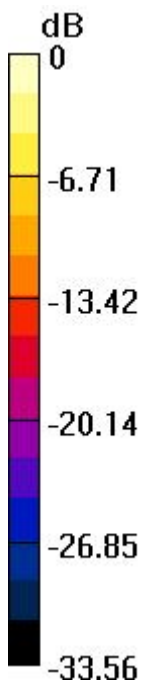
Grid 1 0.267 M3	Grid 2 0.271 M3	Grid 3 0.257 M3
Grid 4 0.451 M2	Grid 5 0.463 M2	Grid 6 0.445 M2
Grid 7 0.278 M3	Grid 8 0.286 M3	Grid 9 0.276 M3

Cursor:

Total = 0.463 A/m

H Category: M2

Location: 0.5, 0.5, 5.3 mm



0 dB = 0.460A/m



Appendix B. Plots of RF Emission Measurement

The plots are shown as follows.

01 HAC_RF_GSM850_GSM Voice_Ch251_#1_E

DUT: 240604-01A

Communication System: Generic GSM; Frequency: 848.8 MHz; Duty Cycle: 1:8.3

Medium: Air Medium parameters used: $\sigma = 0$ mho/m, $\epsilon_r = 1$; $\rho = 0$ kg/m³

Ambient Temperature : 23.5 °C

DASY5 Configuration:

- Probe: ER3DV6 - SN2302; ConvF(1, 1, 1); Calibrated: 20.06.2012
- Electronics: DAE4 Sn1303; Calibrated: 22.11.2012
- Phantom: HAC Test Arch with AMCC; Type: SD HAC P01 BA;
- Measurement SW: DASY52, Version 52.8 (2); SEMCAD X Version 14.4.5 (3634)

Ch251/Hearing Aid Compatibility Test (101x101x1): Measurement grid: dx=5mm, dy=5mm

Maximum value of peak Total field = 123.4 V/m

Device Reference Point: 0, 0, -6.3 mm

Reference Value = 54.783 V/m; Power Drift = -0.12 dB

Hearing Aid Near-Field Category: M4 (AWF -5 dB)

Peak E-field in V/m

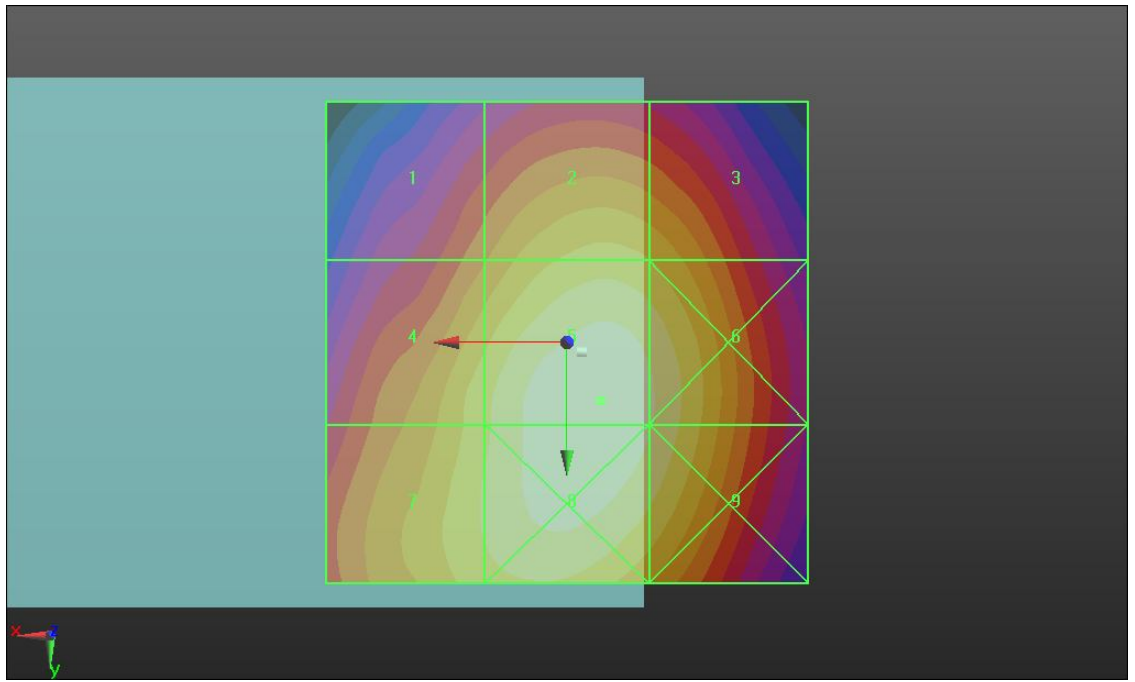
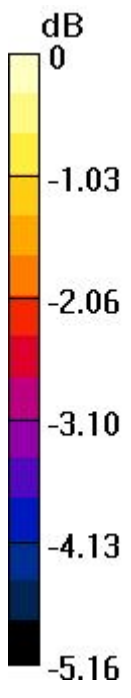
Grid 1 101.0 M4	Grid 2 111.9 M4	Grid 3 109.9 M4
Grid 4 113.1 M4	Grid 5 123.4 M4	Grid 6 119.5 M4
Grid 7 114.6 M4	Grid 8 122.7 M4	Grid 9 119.1 M4

Cursor:

Total = 123.4 V/m

E Category: M4

Location: -3.5, 6, 8.7 mm



0 dB = 123.4V/m

01 HAC_RF_GSM850_GSM Voice_Ch251_#1_H

DUT: 240604-01A

Communication System: Generic GSM; Frequency: 848.8 MHz; Duty Cycle: 1:8.3

Medium: Air Medium parameters used: $\sigma = 0$ mho/m, $\epsilon_r = 1$; $\rho = 0$ kg/m³

Ambient Temperature : 23.5 °C

DASY5 Configuration:

- Probe: H3DV6 - SN6305; ; Calibrated: 11.01.2013
- Electronics: DAE4 Sn1303; Calibrated: 22.11.2012
- Phantom: HAC Test Arch; Type: SD HAC P01 BA;
- Measurement SW: DASY52, Version 52.8 (2); SEMCAD X Version 14.4.5 (3634)

Ch251/Hearing Aid Compatibility Test (101x101x1): Measurement grid: dx=5mm, dy=5mm

Maximum value of peak Total field = 0.257 A/m

Device Reference Point: 0, 0, -6.3 mm

Reference Value = 0.054 A/m; Power Drift = -0.02 dB

Hearing Aid Near-Field Category: M4 (AWF -5 dB)

Peak H-field in A/m

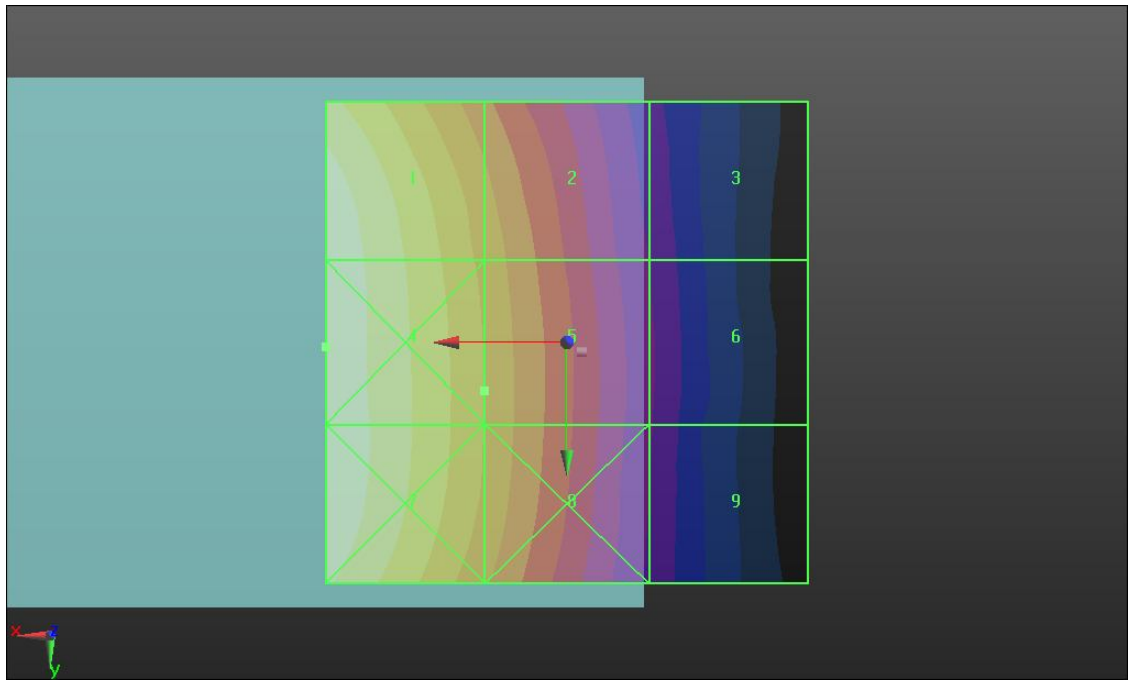
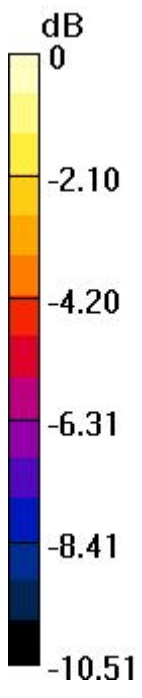
Grid 1 0.257 M4	Grid 2 0.184 M4	Grid 3 0.116 M4
Grid 4 0.258 M4	Grid 5 0.188 M4	Grid 6 0.118 M4
Grid 7 0.258 M4	Grid 8 0.188 M4	Grid 9 0.118 M4

Cursor:

Total = 0.258 A/m

H Category: M4

Location: 25, 0.5, 8.7 mm



0 dB = 0.260A/m

02 HAC_RF_GSM850_GSM Voice_Ch251_#2_E

DUT: 240604-01A

Communication System: Generic GSM; Frequency: 848.8 MHz; Duty Cycle: 1:8.3

Medium: Air Medium parameters used: $\sigma = 0$ mho/m, $\epsilon_r = 1$; $\rho = 0$ kg/m³

Ambient Temperature : 23.5 °C

DASY5 Configuration:

- Probe: ER3DV6 - SN2302; ConvF(1, 1, 1); Calibrated: 20.06.2012
- Electronics: DAE4 Sn1303; Calibrated: 22.11.2012
- Phantom: HAC Test Arch with AMCC; Type: SD HAC P01 BA;
- Measurement SW: DASY52, Version 52.8 (2); SEMCAD X Version 14.4.5 (3634)

Ch251/Hearing Aid Compatibility Test (101x101x1): Measurement grid: dx=5mm, dy=5mm

Maximum value of peak Total field = 118.8 V/m

Device Reference Point: 0, 0, -6.3 mm

Reference Value = 52.333 V/m; Power Drift = -0.04 dB

Hearing Aid Near-Field Category: M4 (AWF -5 dB)

Peak E-field in V/m

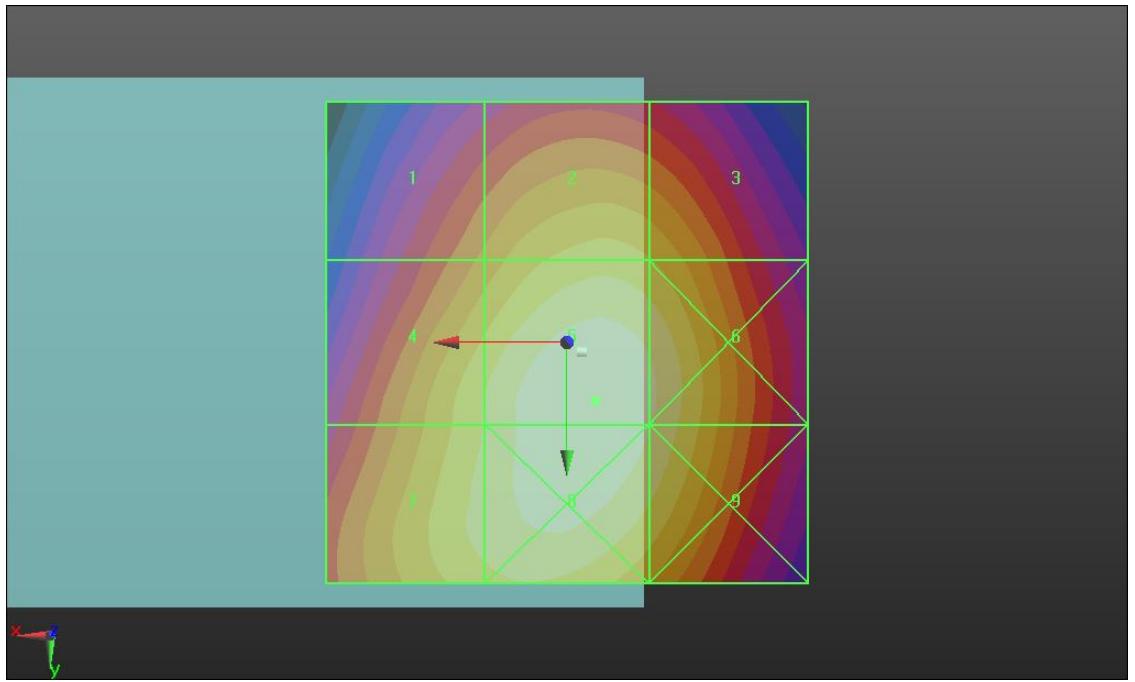
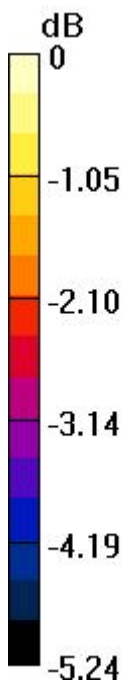
Grid 1 98.594 M4	Grid 2 108.0 M4	Grid 3 105.7 M4
Grid 4 110.1 M4	Grid 5 118.8 M4	Grid 6 115.2 M4
Grid 7 111.5 M4	Grid 8 118.4 M4	Grid 9 114.4 M4

Cursor:

Total = 118.8 V/m

E Category: M4

Location: -3, 6, 8.7 mm



0 dB = 118.8V/m

02 HAC_RF_GSM850_GSM Voice_Ch251_#2_H

DUT: 240604-01A

Communication System: Generic GSM; Frequency: 848.8 MHz; Duty Cycle: 1:8.3

Medium: Air Medium parameters used: $\sigma = 0$ mho/m, $\epsilon_r = 1$; $\rho = 0$ kg/m³

Ambient Temperature : 23.5 °C

DASY5 Configuration:

- Probe: H3DV6 - SN6305; ; Calibrated: 11.01.2013
- Electronics: DAE4 Sn1303; Calibrated: 22.11.2012
- Phantom: HAC Test Arch; Type: SD HAC P01 BA;
- Measurement SW: DASY52, Version 52.8 (2); SEMCAD X Version 14.4.5 (3634)

Ch251/Hearing Aid Compatibility Test (101x101x1): Measurement grid: dx=5mm, dy=5mm

Maximum value of peak Total field = 0.247 A/m

Device Reference Point: 0, 0, -6.3 mm

Reference Value = 0.052 A/m; Power Drift = -0.07 dB

Hearing Aid Near-Field Category: M4 (AWF -5 dB)

Peak H-field in A/m

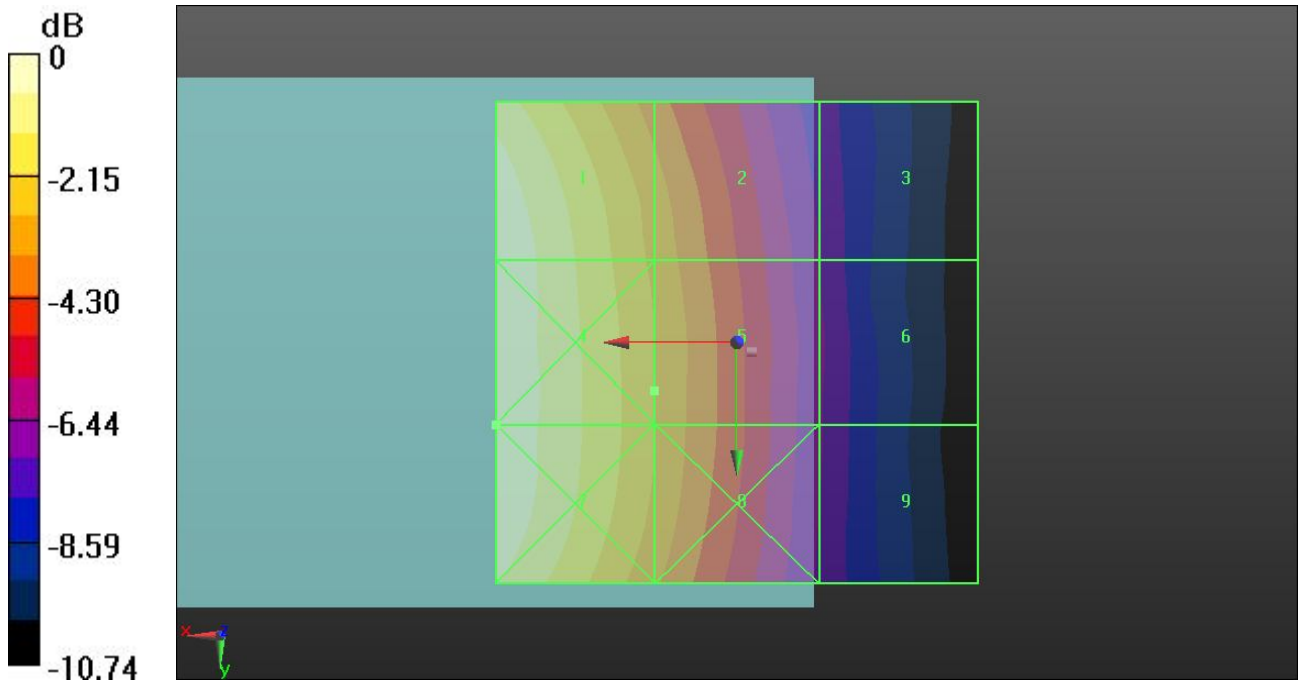
Grid 1 0.247 M4	Grid 2 0.176 M4	Grid 3 0.110 M4
Grid 4 0.248 M4	Grid 5 0.180 M4	Grid 6 0.112 M4
Grid 7 0.248 M4	Grid 8 0.180 M4	Grid 9 0.111 M4

Cursor:

Total = 0.248 A/m

H Category: M4

Location: 25, 8.5, 8.7 mm



0 dB = 0.250A/m

03 HAC_RF_GSM850_GSM Voice_Ch251_#3_E

DUT: 240604-01A

Communication System: Generic GSM; Frequency: 848.8 MHz; Duty Cycle: 1:8.3

Medium: Air Medium parameters used: $\sigma = 0$ mho/m, $\epsilon_r = 1$; $\rho = 0$ kg/m³

Ambient Temperature : 23.5 °C

DASY5 Configuration:

- Probe: ER3DV6 - SN2302; ConvF(1, 1, 1); Calibrated: 20.06.2012
- Electronics: DAE4 Sn1303; Calibrated: 22.11.2012
- Phantom: HAC Test Arch with AMCC; Type: SD HAC P01 BA;
- Measurement SW: DASY52, Version 52.8 (2); SEMCAD X Version 14.4.5 (3634)

Ch251/Hearing Aid Compatibility Test (101x101x1): Measurement grid: dx=5mm, dy=5mm

Maximum value of peak Total field = 114.1 V/m

Device Reference Point: 0, 0, -6.3 mm

Reference Value = 49.482 V/m; Power Drift = -0.05 dB

Hearing Aid Near-Field Category: M4 (AWF -5 dB)

Peak E-field in V/m

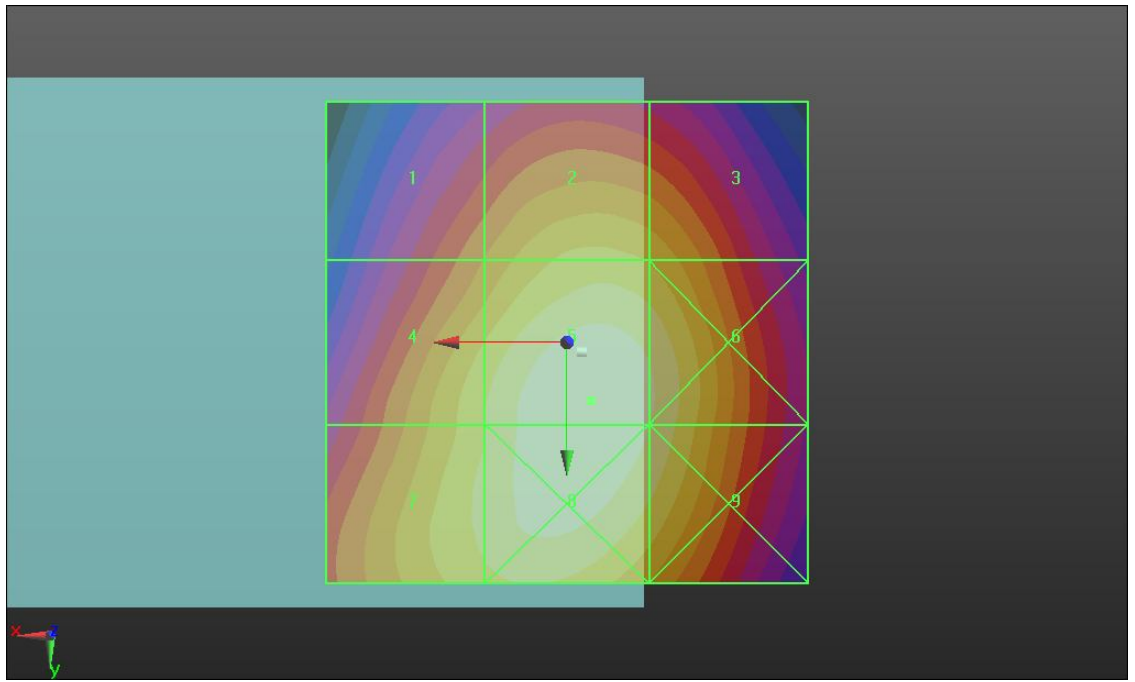
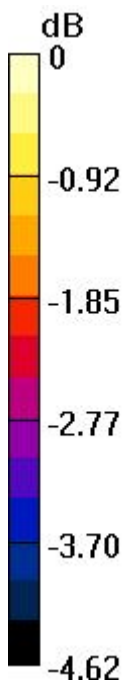
Grid 1 95.923 M4	Grid 2 104.1 M4	Grid 3 102.3 M4
Grid 4 106.2 M4	Grid 5 114.1 M4	Grid 6 110.8 M4
Grid 7 107.6 M4	Grid 8 113.8 M4	Grid 9 110.2 M4

Cursor:

Total = 114.1 V/m

E Category: M4

Location: -2.5, 6, 8.7 mm



0 dB = 114.1V/m

03 HAC_RF_GSM850_GSM Voice_Ch251_#3_H

DUT: 240604-01A

Communication System: Generic GSM; Frequency: 848.8 MHz; Duty Cycle: 1:8.3

Medium: Air Medium parameters used: $\sigma = 0$ mho/m, $\epsilon_r = 1$; $\rho = 0$ kg/m³

Ambient Temperature : 23.5 °C

DASY5 Configuration:

- Probe: H3DV6 - SN6305; ; Calibrated: 11.01.2013
- Electronics: DAE4 Sn1303; Calibrated: 22.11.2012
- Phantom: HAC Test Arch; Type: SD HAC P01 BA;
- Measurement SW: DASY52, Version 52.8 (2); SEMCAD X Version 14.4.5 (3634)

Ch251/Hearing Aid Compatibility Test (101x101x1): Measurement grid: dx=5mm, dy=5mm

Maximum value of peak Total field = 0.234 A/m

Device Reference Point: 0, 0, -6.3 mm

Reference Value = 0.050 A/m; Power Drift = 0.03 dB

Hearing Aid Near-Field Category: M4 (AWF -5 dB)

Peak H-field in A/m

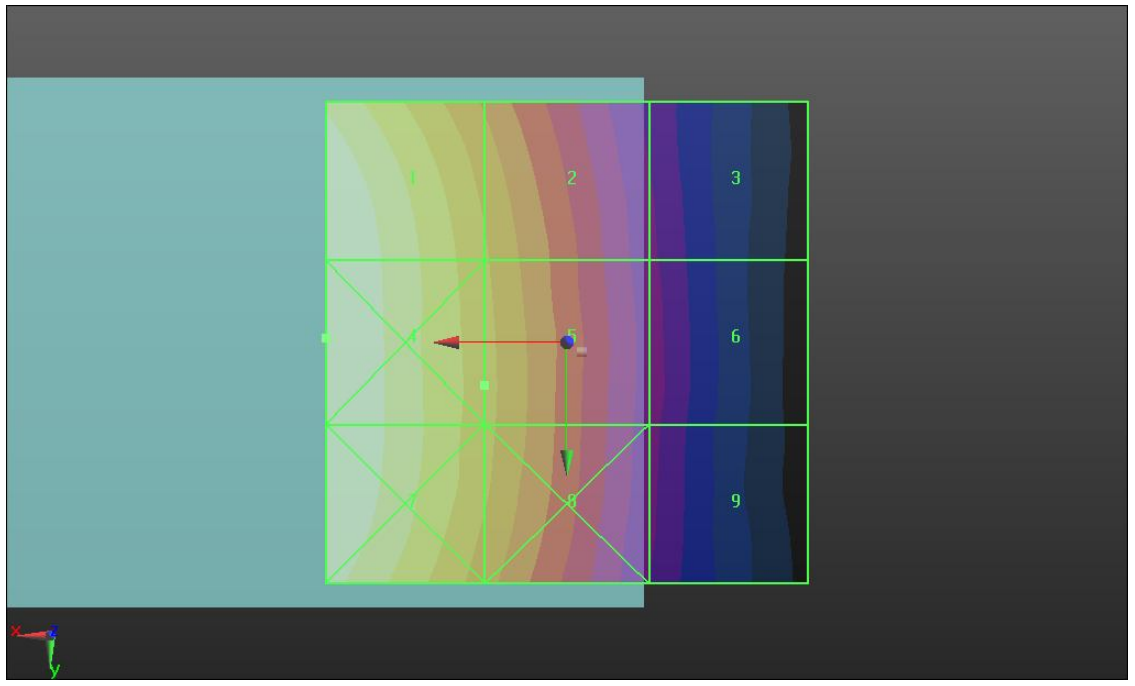
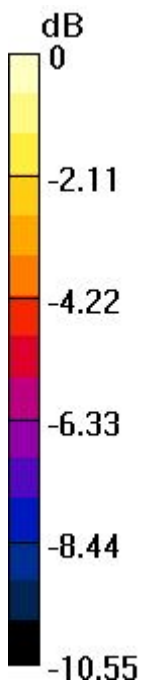
Grid 1 0.234 M4	Grid 2 0.168 M4	Grid 3 0.105 M4
Grid 4 0.235 M4	Grid 5 0.172 M4	Grid 6 0.107 M4
Grid 7 0.234 M4	Grid 8 0.171 M4	Grid 9 0.106 M4

Cursor:

Total = 0.235 A/m

H Category: M4

Location: 25, -0.5, 8.7 mm



0 dB = 0.230A/m

04 HAC_RF_GSM1900_GSM Voice_Ch512_#1_E

DUT: 240604-01A

Communication System: Generic GSM; Frequency: 1850.2 MHz; Duty Cycle: 1:8.3

Medium: Air Medium parameters used: $\sigma = 0$ mho/m, $\epsilon_r = 1$; $\rho = 0$ kg/m³

Ambient Temperature : 23.5 °C

DASY5 Configuration:

- Probe: ER3DV6 - SN2302; ConvF(1, 1, 1); Calibrated: 20.06.2012
- Electronics: DAE4 Sn1303; Calibrated: 22.11.2012
- Phantom: HAC Test Arch with AMCC; Type: SD HAC P01 BA;
- Measurement SW: DASY52, Version 52.8 (2); SEMCAD X Version 14.4.5 (3634)

Ch512/Hearing Aid Compatibility Test (101x101x1): Measurement grid: dx=5mm, dy=5mm

Maximum value of peak Total field = 76.428 V/m

Device Reference Point: 0, 0, -6.3 mm

Reference Value = 29.893 V/m; Power Drift = -0.09 dB

Hearing Aid Near-Field Category: M3 (AWF -5 dB)

Peak E-field in V/m

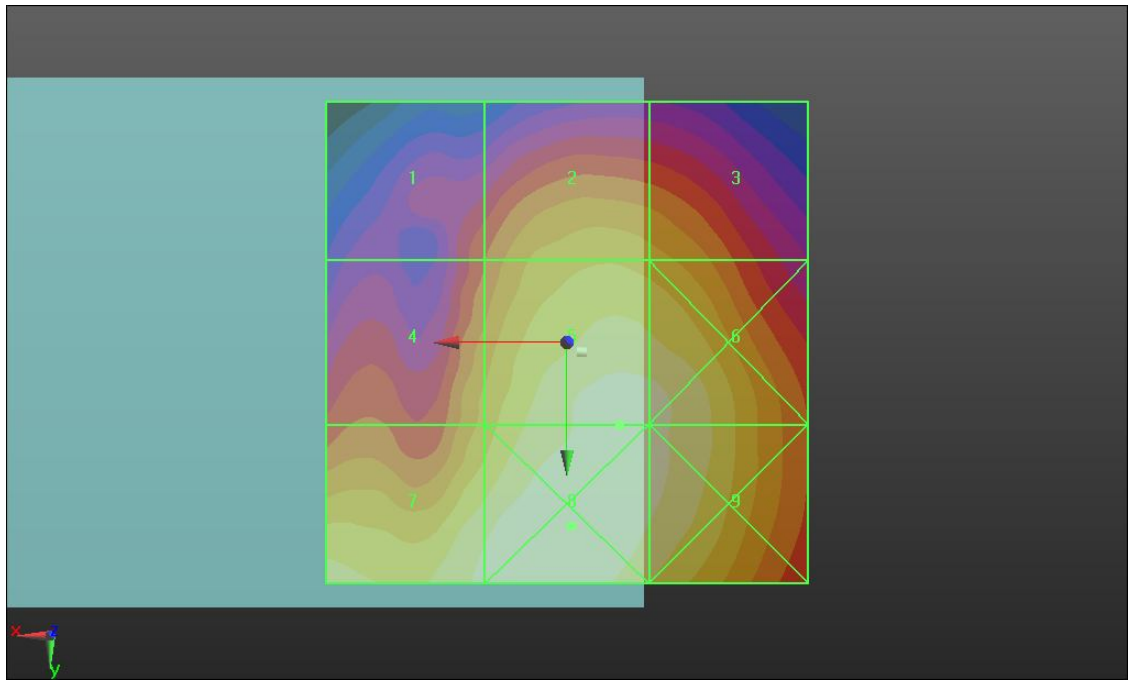
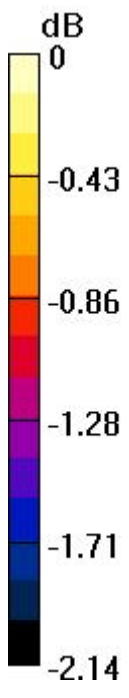
Grid 1 69.857 M3	Grid 2 73.316 M3	Grid 3 72.834 M3
Grid 4 72.707 M3	Grid 5 76.428 M3	Grid 6 76.245 M3
Grid 7 76.079 M3	Grid 8 77.086 M3	Grid 9 76.283 M3

Cursor:

Total = 77.086 V/m

E Category: M3

Location: -0.5, 19, 8.7 mm



0 dB = 77.090V/m

04 HAC_RF_GSM1900_GSM Voice_Ch512_#1_H

DUT: 240604-01A

Communication System: Generic GSM; Frequency: 1850.2 MHz; Duty Cycle: 1:8.3

Medium: Air Medium parameters used: $\sigma = 0$ mho/m, $\epsilon_r = 1$; $\rho = 0$ kg/m³

Ambient Temperature : 23.5 °C

DASY5 Configuration:

- Probe: H3DV6 - SN6305; ; Calibrated: 11.01.2013
- Electronics: DAE4 Sn1303; Calibrated: 22.11.2012
- Phantom: HAC Test Arch; Type: SD HAC P01 BA;
- Measurement SW: DASY52, Version 52.8 (2); SEMCAD X Version 14.4.5 (3634)

Ch512/Hearing Aid Compatibility Test (101x101x1): Measurement grid: dx=5mm, dy=5mm

Maximum value of peak Total field = 0.205 A/m

Device Reference Point: 0, 0, -6.3 mm

Reference Value = 0.056 A/m; Power Drift = -0.04 dB

Hearing Aid Near-Field Category: M3 (AWF -5 dB)

Peak H-field in A/m

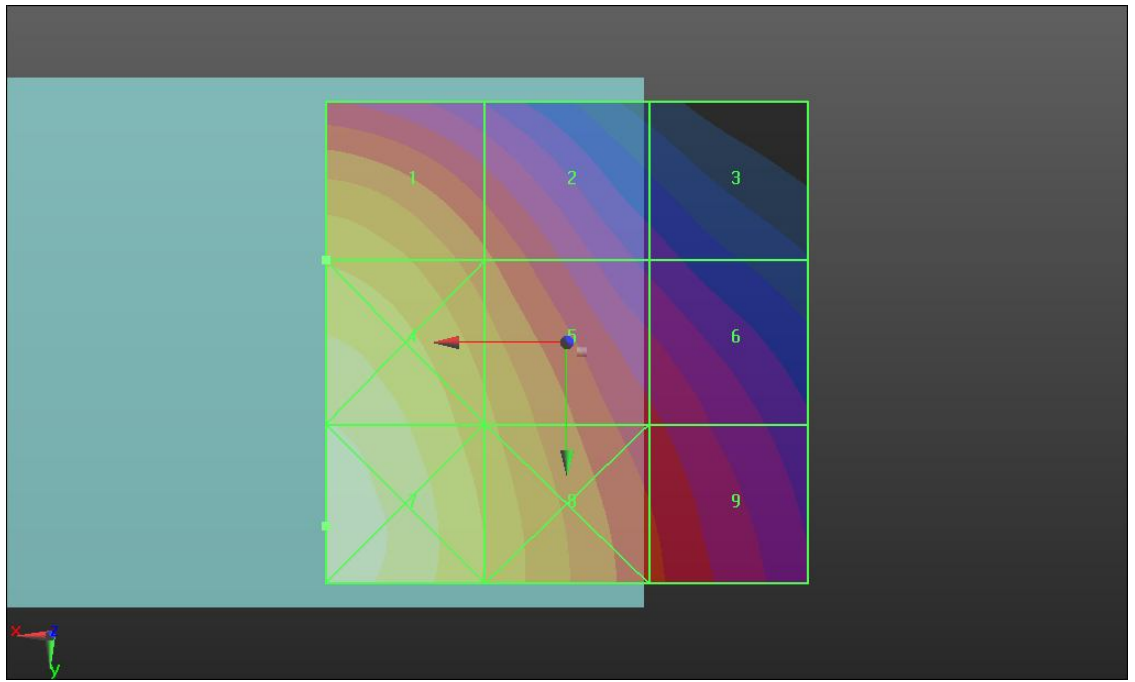
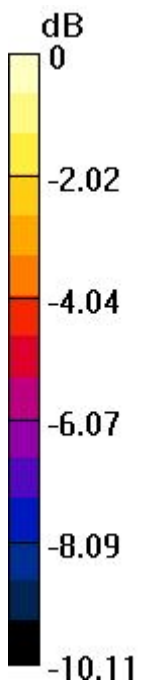
Grid 1 0.205 M3	Grid 2 0.167 M3	Grid 3 0.117 M4
Grid 4 0.242 M3	Grid 5 0.195 M3	Grid 6 0.143 M3
Grid 7 0.255 M2	Grid 8 0.206 M3	Grid 9 0.155 M3

Cursor:

Total = 0.255 A/m

H Category: M2

Location: 25, 19, 8.7 mm



0 dB = 0.260A/m

05 HAC_RF_GSM1900_GSM Voice_Ch661_#1_E

DUT: 240604-01A

Communication System: Generic GSM; Frequency: 1880 MHz; Duty Cycle: 1:8.3

Medium: Air Medium parameters used: $\sigma = 0$ mho/m, $\epsilon_r = 1$; $\rho = 0$ kg/m³

Ambient Temperature : 23.5 °C

DASY5 Configuration:

- Probe: ER3DV6 - SN2302; ConvF(1, 1, 1); Calibrated: 20.06.2012
- Electronics: DAE4 Sn1303; Calibrated: 22.11.2012
- Phantom: HAC Test Arch with AMCC; Type: SD HAC P01 BA;
- Measurement SW: DASY52, Version 52.8 (2); SEMCAD X Version 14.4.5 (3634)

Ch661/Hearing Aid Compatibility Test (101x101x1): Measurement grid: dx=5mm, dy=5mm

Maximum value of peak Total field = 71.882 V/m

Device Reference Point: 0, 0, -6.3 mm

Reference Value = 29.319 V/m; Power Drift = -0.20 dB

Hearing Aid Near-Field Category: M3 (AWF -5 dB)

Peak E-field in V/m

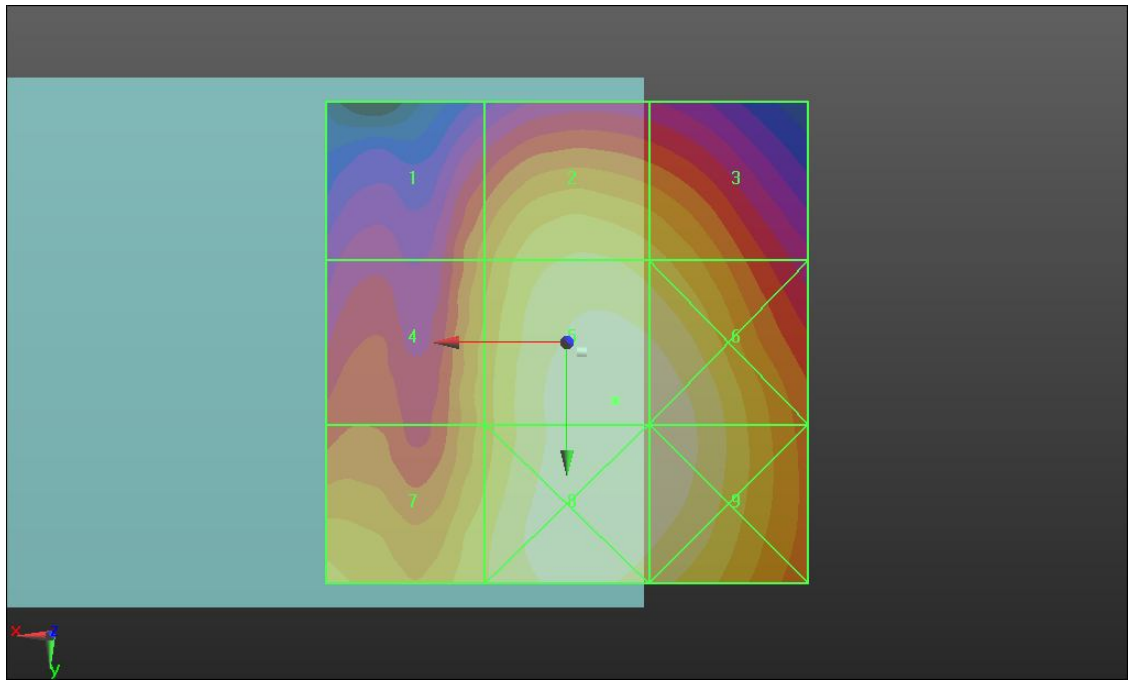
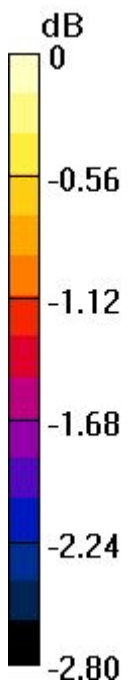
Grid 1 65.308 M3	Grid 2 69.128 M3	Grid 3 68.136 M3
Grid 4 66.819 M3	Grid 5 71.882 M3	Grid 6 71.625 M3
Grid 7 68.732 M3	Grid 8 71.754 M3	Grid 9 71.669 M3

Cursor:

Total = 71.882 V/m

E Category: M3

Location: -5, 6, 8.7 mm



0 dB = 71.880V/m

06 HAC_RF_GSM1900_GSM Voice_Ch810_#1_E

DUT: 240604-01A

Communication System: Generic GSM; Frequency: 1909.8 MHz; Duty Cycle: 1:8.3

Medium: Air Medium parameters used: $\sigma = 0$ mho/m, $\epsilon_r = 1$; $\rho = 0$ kg/m³

Ambient Temperature : 23.5 °C

DASY5 Configuration:

- Probe: ER3DV6 - SN2302; ConvF(1, 1, 1); Calibrated: 20.06.2012
- Electronics: DAE4 Sn1303; Calibrated: 22.11.2012
- Phantom: HAC Test Arch with AMCC; Type: SD HAC P01 BA;
- Measurement SW: DASY52, Version 52.8 (2); SEMCAD X Version 14.4.5 (3634)

Ch810/Hearing Aid Compatibility Test (101x101x1): Measurement grid: dx=5mm, dy=5mm

Maximum value of peak Total field = 66.997 V/m

Device Reference Point: 0, 0, -6.3 mm

Reference Value = 25.673 V/m; Power Drift = -0.08 dB

Hearing Aid Near-Field Category: M3 (AWF -5 dB)

Peak E-field in V/m

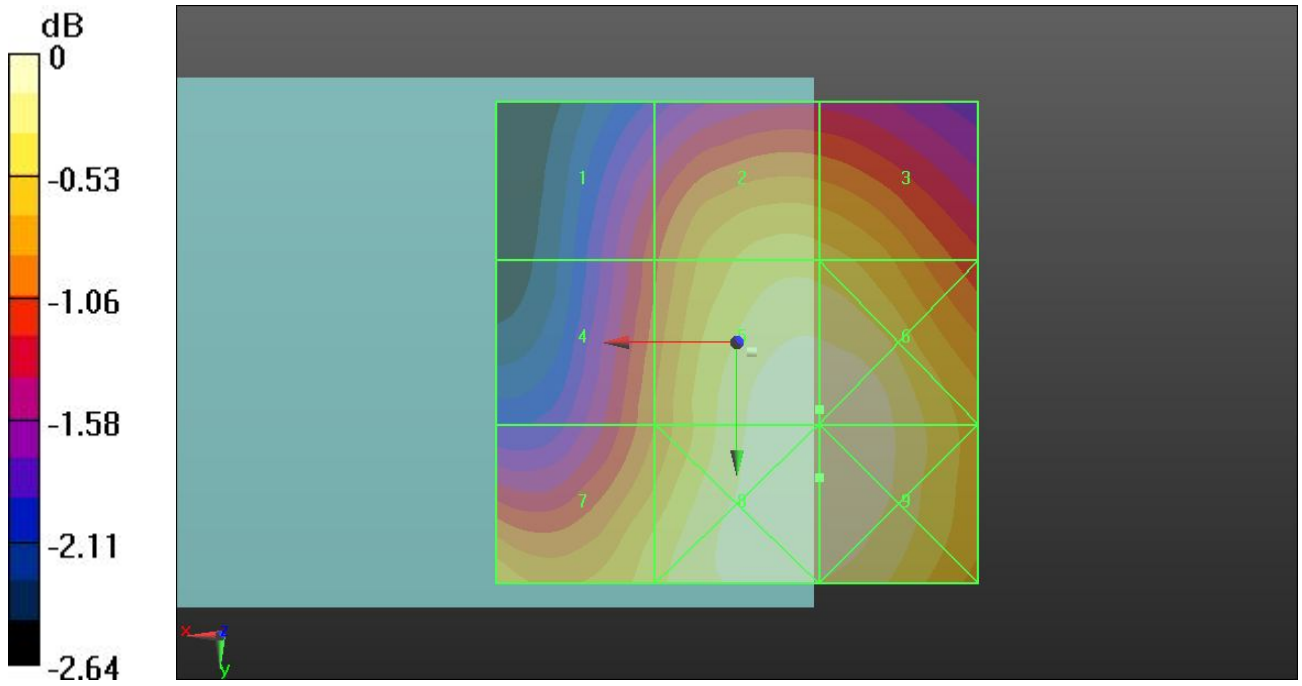
Grid 1 59.163 M3	Grid 2 64.032 M3	Grid 3 63.791 M3
Grid 4 60.688 M3	Grid 5 66.997 M3	Grid 6 66.999 M3
Grid 7 63.869 M3	Grid 8 67.064 M3	Grid 9 67.064 M3

Cursor:

Total = 67.064 V/m

E Category: M3

Location: -8.5, 14, 8.7 mm



0 dB = 67.060V/m

07 HAC_RF_GSM1900_GSM Voice_Ch512_#2_E

DUT: 240604-01A

Communication System: Generic GSM; Frequency: 1850.2 MHz; Duty Cycle: 1:8.3

Medium: Air Medium parameters used: $\sigma = 0$ mho/m, $\epsilon_r = 1$; $\rho = 0$ kg/m³

Ambient Temperature : 23.5 °C

DASY5 Configuration:

- Probe: ER3DV6 - SN2302; ConvF(1, 1, 1); Calibrated: 20.06.2012
- Electronics: DAE4 Sn1303; Calibrated: 22.11.2012
- Phantom: HAC Test Arch with AMCC; Type: SD HAC P01 BA;
- Measurement SW: DASY52, Version 52.8 (2); SEMCAD X Version 14.4.5 (3634)

Ch512/Hearing Aid Compatibility Test (101x101x1): Measurement grid: dx=5mm, dy=5mm

Maximum value of peak Total field = 76.42 V/m

Device Reference Point: 0, 0, -6.3 mm

Reference Value = 30.441 V/m; Power Drift = -0.22 dB

Hearing Aid Near-Field Category: M3 (AWF -5 dB)

Peak E-field in V/m

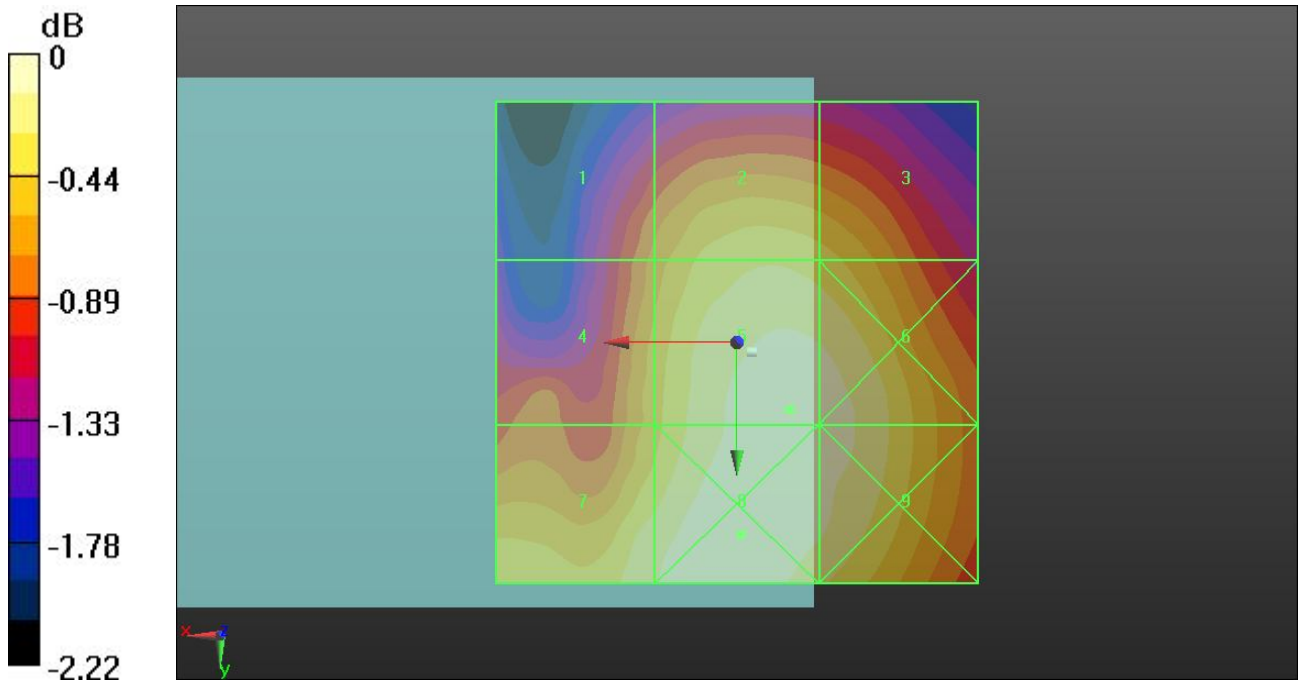
Grid 1 71.158 M3	Grid 2 74.203 M3	Grid 3 73.691 M3
Grid 4 72.628 M3	Grid 5 76.420 M3	Grid 6 76.329 M3
Grid 7 75.495 M3	Grid 8 76.884 M3	Grid 9 76.355 M3

Cursor:

Total = 76.884 V/m

E Category: M3

Location: -0.5, 20, 8.7 mm



0 dB = 76.880V/m

07 HAC_RF_GSM1900_GSM Voice_Ch512_#2_H

DUT: 240604-01A

Communication System: Generic GSM; Frequency: 1850.2 MHz; Duty Cycle: 1:8.3

Medium: Air Medium parameters used: $\sigma = 0$ mho/m, $\epsilon_r = 1$; $\rho = 0$ kg/m³

Ambient Temperature : 23.5 °C

DASY5 Configuration:

- Probe: H3DV6 - SN6305; ; Calibrated: 11.01.2013
- Electronics: DAE4 Sn1303; Calibrated: 22.11.2012
- Phantom: HAC Test Arch; Type: SD HAC P01 BA;
- Measurement SW: DASY52, Version 52.8 (2); SEMCAD X Version 14.4.5 (3634)

Ch512/Hearing Aid Compatibility Test (101x101x1): Measurement grid: dx=5mm, dy=5mm

Maximum value of peak Total field = 0.195 A/m

Device Reference Point: 0, 0, -6.3 mm

Reference Value = 0.053 A/m; Power Drift = -0.04 dB

Hearing Aid Near-Field Category: M3 (AWF -5 dB)

Peak H-field in A/m

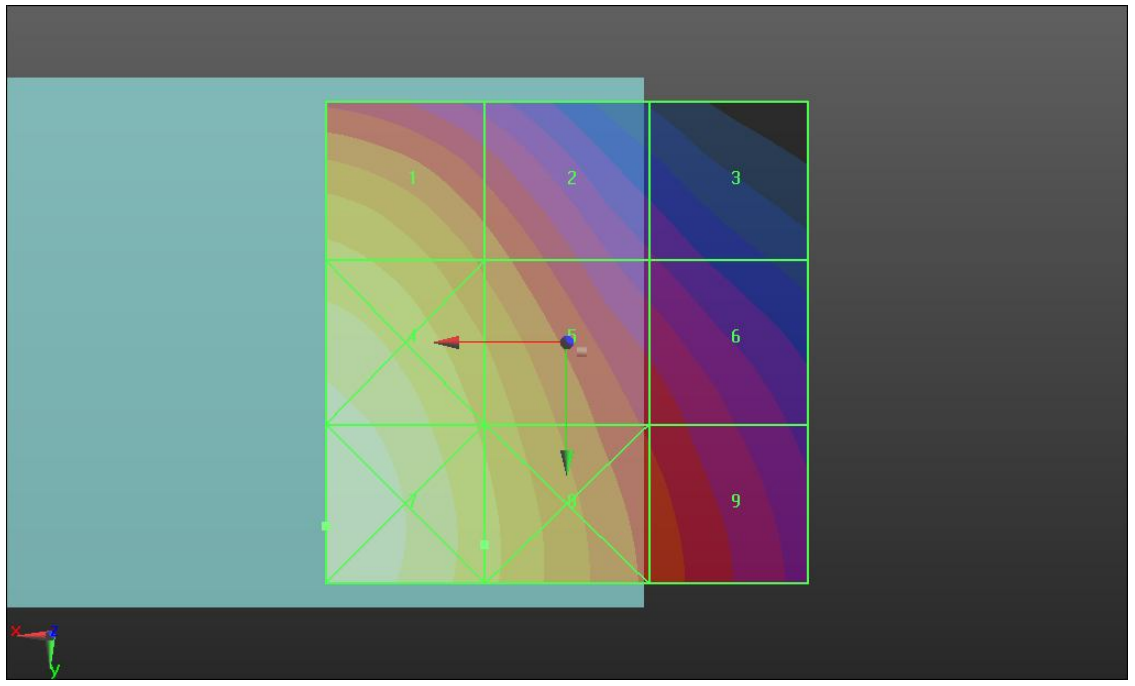
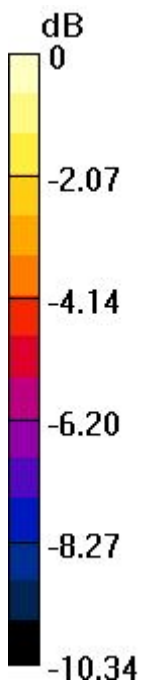
Grid 1 0.195 M3	Grid 2 0.158 M3	Grid 3 0.111 M4
Grid 4 0.230 M3	Grid 5 0.186 M3	Grid 6 0.136 M4
Grid 7 0.241 M3	Grid 8 0.195 M3	Grid 9 0.147 M3

Cursor:

Total = 0.241 A/m

H Category: M3

Location: 25, 19, 8.7 mm



0 dB = 0.240A/m

08 HAC_RF_GSM1900_GSM Voice_Ch661_#2_E

DUT: 240604-01A

Communication System: Generic GSM; Frequency: 1880 MHz; Duty Cycle: 1:8.3

Medium: Air Medium parameters used: $\sigma = 0$ mho/m, $\epsilon_r = 1$; $\rho = 0$ kg/m³

Ambient Temperature : 23.5 °C

DASY5 Configuration:

- Probe: ER3DV6 - SN2302; ConvF(1, 1, 1); Calibrated: 20.06.2012
- Electronics: DAE4 Sn1303; Calibrated: 22.11.2012
- Phantom: HAC Test Arch with AMCC; Type: SD HAC P01 BA;
- Measurement SW: DASY52, Version 52.8 (2); SEMCAD X Version 14.4.5 (3634)

Ch661/Hearing Aid Compatibility Test (101x101x1): Measurement grid: dx=5mm, dy=5mm

Maximum value of peak Total field = 68.858 V/m

Device Reference Point: 0, 0, -6.3 mm

Reference Value = 27.656 V/m; Power Drift = -0.0018 dB

Hearing Aid Near-Field Category: M3 (AWF -5 dB)

Peak E-field in V/m

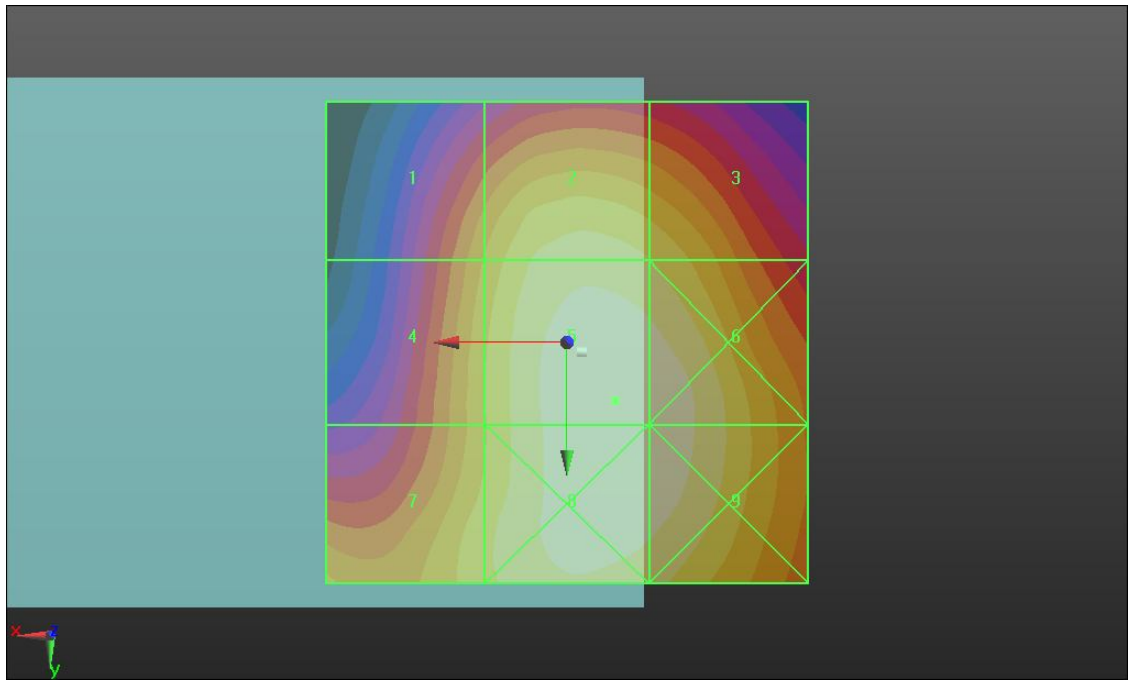
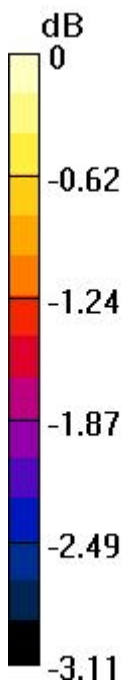
Grid 1 62.821 M3	Grid 2 66.666 M3	Grid 3 65.759 M3
Grid 4 64.117 M3	Grid 5 68.858 M3	Grid 6 68.705 M3
Grid 7 65.324 M3	Grid 8 68.755 M3	Grid 9 68.536 M3

Cursor:

Total = 68.858 V/m

E Category: M3

Location: -5, 6, 8.7 mm



0 dB = 68.860V/m

09 HAC_RF_GSM1900_GSM Voice_Ch810_#2_E

DUT: 240604-01A

Communication System: Generic GSM; Frequency: 1909.8 MHz; Duty Cycle: 1:8.3

Medium: Air Medium parameters used: $\sigma = 0$ mho/m, $\epsilon_r = 1$; $\rho = 0$ kg/m³

Ambient Temperature : 23.5 °C

DASY5 Configuration:

- Probe: ER3DV6 - SN2302; ConvF(1, 1, 1); Calibrated: 20.06.2012
- Electronics: DAE4 Sn1303; Calibrated: 22.11.2012
- Phantom: HAC Test Arch with AMCC; Type: SD HAC P01 BA;
- Measurement SW: DASY52, Version 52.8 (2); SEMCAD X Version 14.4.5 (3634)

Ch810/Hearing Aid Compatibility Test (101x101x1): Measurement grid: dx=5mm, dy=5mm

Maximum value of peak Total field = 65.915 V/m

Device Reference Point: 0, 0, -6.3 mm

Reference Value = 25.783 V/m; Power Drift = -0.22 dB

Hearing Aid Near-Field Category: M3 (AWF -5 dB)

Peak E-field in V/m

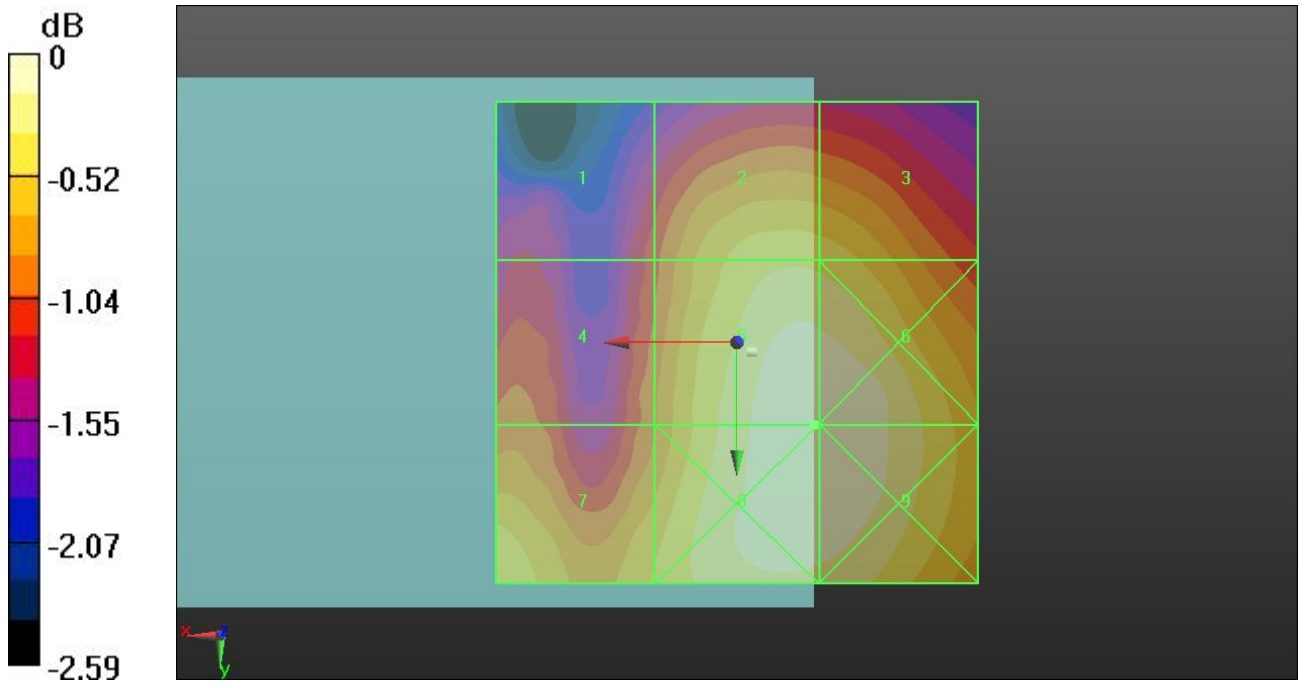
Grid 1 58.180 M3	Grid 2 63.172 M3	Grid 3 63.000 M3
Grid 4 59.597 M3	Grid 5 65.915 M3	Grid 6 65.908 M3
Grid 7 63.559 M3	Grid 8 65.915 M3	Grid 9 65.908 M3

Cursor:

Total = 65.915 V/m

E Category: M3

Location: -8, 8.5, 8.7 mm



0 dB = 65.910V/m

10 HAC_RF_GSM1900_GSM Voice_Ch512_#3_E

DUT: 240604-01A

Communication System: Generic GSM; Frequency: 1850.2 MHz; Duty Cycle: 1:8.3

Medium: Air Medium parameters used: $\sigma = 0$ mho/m, $\epsilon_r = 1$; $\rho = 0$ kg/m³

Ambient Temperature : 23.5 °C

DASY5 Configuration:

- Probe: ER3DV6 - SN2302; ConvF(1, 1, 1); Calibrated: 20.06.2012
- Electronics: DAE4 Sn1303; Calibrated: 22.11.2012
- Phantom: HAC Test Arch with AMCC; Type: SD HAC P01 BA;
- Measurement SW: DASY52, Version 52.8 (2); SEMCAD X Version 14.4.5 (3634)

Ch512/Hearing Aid Compatibility Test (101x101x1): Measurement grid: dx=5mm, dy=5mm

Maximum value of peak Total field = 78.004 V/m

Device Reference Point: 0, 0, -6.3 mm

Reference Value = 31.384 V/m; Power Drift = -0.05 dB

Hearing Aid Near-Field Category: M3 (AWF -5 dB)

Peak E-field in V/m

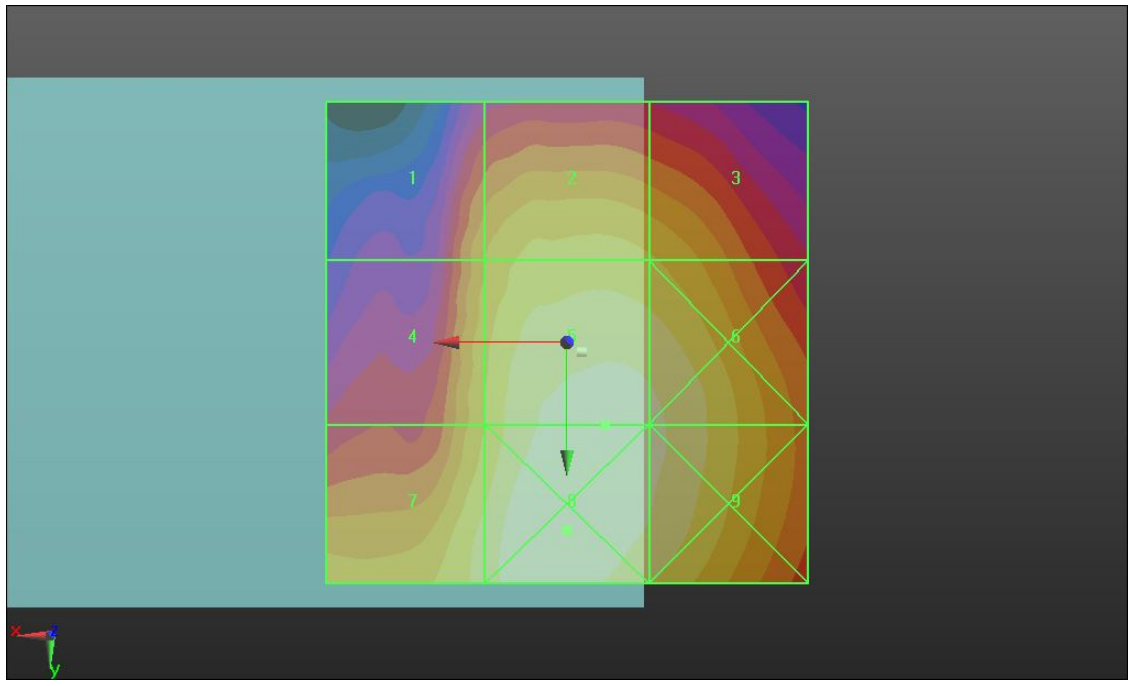
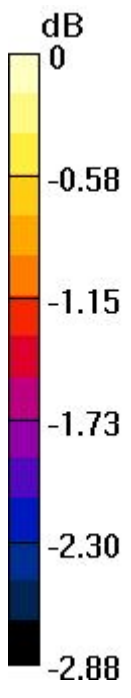
Grid 1 72.287 M3	Grid 2 74.862 M3	Grid 3 74.193 M3
Grid 4 73.974 M3	Grid 5 78.004 M3	Grid 6 77.659 M3
Grid 7 76.380 M3	Grid 8 78.972 M3	Grid 9 77.716 M3

Cursor:

Total = 78.972 V/m

E Category: M3

Location: 0, 19.5, 8.7 mm



0 dB = 78.970V/m

10 HAC_RF_GSM1900_GSM Voice_Ch512_#3_H

DUT: 240604-01A

Communication System: Generic GSM; Frequency: 1850.2 MHz; Duty Cycle: 1:8.3

Medium: Air Medium parameters used: $\sigma = 0$ mho/m, $\epsilon_r = 1$; $\rho = 0$ kg/m³

Ambient Temperature : 23.5 °C

DASY5 Configuration:

- Probe: H3DV6 - SN6305; ; Calibrated: 11.01.2013
- Electronics: DAE4 Sn1303; Calibrated: 22.11.2012
- Phantom: HAC Test Arch; Type: SD HAC P01 BA;
- Measurement SW: DASY52, Version 52.8 (2); SEMCAD X Version 14.4.5 (3634)

Ch512/Hearing Aid Compatibility Test (101x101x1): Measurement grid: dx=5mm, dy=5mm

Maximum value of peak Total field = 0.204 A/m

Device Reference Point: 0, 0, -6.3 mm

Reference Value = 0.056 A/m; Power Drift = 0.04 dB

Hearing Aid Near-Field Category: M3 (AWF -5 dB)

Peak H-field in A/m

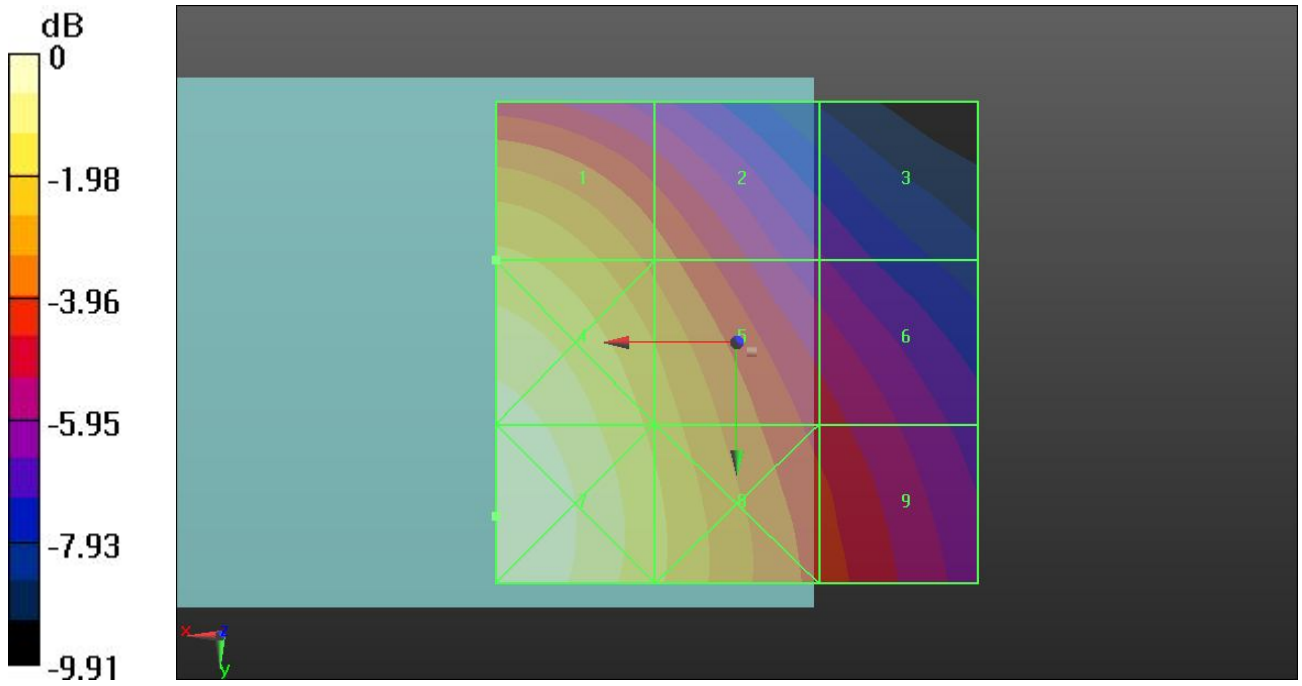
Grid 1 0.204 M3	Grid 2 0.167 M3	Grid 3 0.119 M4
Grid 4 0.240 M3	Grid 5 0.195 M3	Grid 6 0.143 M3
Grid 7 0.252 M2	Grid 8 0.204 M3	Grid 9 0.154 M3

Cursor:

Total = 0.252 A/m

H Category: M2

Location: 25, 18, 8.7 mm



0 dB = 0.250A/m

11 HAC_RF_GSM1900_GSM Voice_Ch661_#3_E

DUT: 240604-01A

Communication System: Generic GSM; Frequency: 1880 MHz; Duty Cycle: 1:8.3

Medium: Air Medium parameters used: $\sigma = 0$ mho/m, $\epsilon_r = 1$; $\rho = 0$ kg/m³

Ambient Temperature : 23.5 °C

DASY5 Configuration:

- Probe: ER3DV6 - SN2302; ConvF(1, 1, 1); Calibrated: 20.06.2012
- Electronics: DAE4 Sn1303; Calibrated: 22.11.2012
- Phantom: HAC Test Arch with AMCC; Type: SD HAC P01 BA;
- Measurement SW: DASY52, Version 52.8 (2); SEMCAD X Version 14.4.5 (3634)

Ch661/Hearing Aid Compatibility Test (101x101x1): Measurement grid: dx=5mm, dy=5mm

Maximum value of peak Total field = 76.975 V/m

Device Reference Point: 0, 0, -6.3 mm

Reference Value = 30.671 V/m; Power Drift = -0.12 dB

Hearing Aid Near-Field Category: M3 (AWF -5 dB)

Peak E-field in V/m

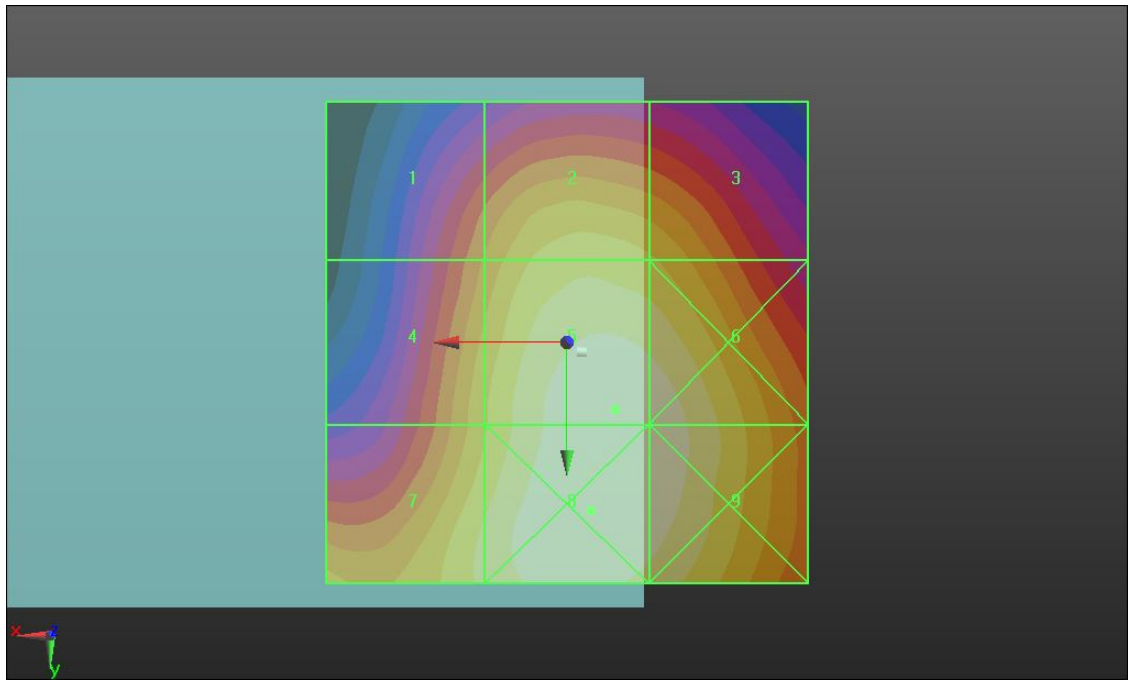
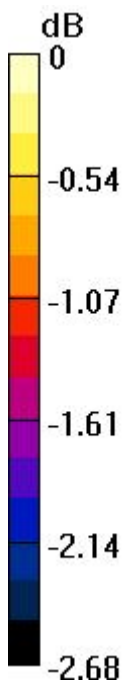
Grid 1 69.890 M3	Grid 2 73.645 M3	Grid 3 72.838 M3
Grid 4 72.405 M3	Grid 5 76.975 M3	Grid 6 76.779 M3
Grid 7 74.551 M3	Grid 8 77.164 M3	Grid 9 76.880 M3

Cursor:

Total = 77.164 V/m

E Category: M3

Location: -2.5, 17.5, 8.7 mm



0 dB = 77.160V/m

12 HAC_RF_GSM1900_GSM Voice_Ch810_#3_E

DUT: 240604-01A

Communication System: Generic GSM; Frequency: 1909.8 MHz; Duty Cycle: 1:8.3

Medium: Air Medium parameters used: $\sigma = 0$ mho/m, $\epsilon_r = 1$; $\rho = 0$ kg/m³

Ambient Temperature : 23.5 °C

DASY5 Configuration:

- Probe: ER3DV6 - SN2302; ConvF(1, 1, 1); Calibrated: 20.06.2012
- Electronics: DAE4 Sn1303; Calibrated: 22.11.2012
- Phantom: HAC Test Arch with AMCC; Type: SD HAC P01 BA;
- Measurement SW: DASY52, Version 52.8 (2); SEMCAD X Version 14.4.5 (3634)

Ch810/Hearing Aid Compatibility Test (101x101x1): Measurement grid: dx=5mm, dy=5mm

Maximum value of peak Total field = 72.795 V/m

Device Reference Point: 0, 0, -6.3 mm

Reference Value = 27.681 V/m; Power Drift = -0.11 dB

Hearing Aid Near-Field Category: M3 (AWF -5 dB)

Peak E-field in V/m

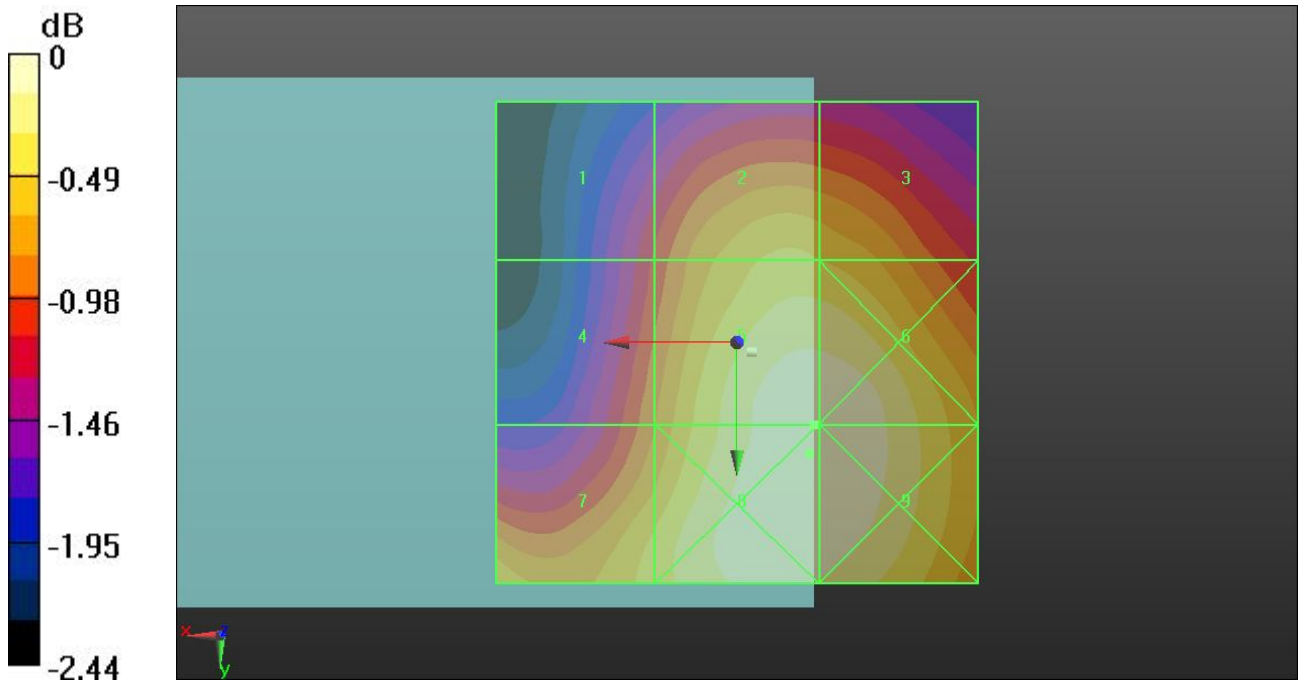
Grid 1 64.272 M3	Grid 2 69.306 M3	Grid 3 68.981 M3
Grid 4 66.379 M3	Grid 5 72.795 M3	Grid 6 72.789 M3
Grid 7 69.533 M3	Grid 8 72.887 M3	Grid 9 72.880 M3

Cursor:

Total = 72.887 V/m

E Category: M3

Location: -7.5, 11.5, 8.7 mm



0 dB = 72.890V/m

13 HAC_RF_WCDMA V_RMC 12.2K_Ch4233_#1_E

DUT: 240604-01A

Communication System: UMTS; Frequency: 846.6 MHz; Duty Cycle: 1:1

Medium: Air Medium parameters used: $\sigma = 0$ mho/m, $\epsilon_r = 1$; $\rho = 0$ kg/m³

Ambient Temperature : 23.5 °C

DASY5 Configuration:

- Probe: ER3DV6 - SN2302; ConvF(1, 1, 1); Calibrated: 20.06.2012

- Electronics: DAE4 Sn1303; Calibrated: 22.11.2012

- Phantom: HAC Test Arch with AMCC; Type: SD HAC P01 BA;

- Measurement SW: DASY52, Version 52.8 (2); SEMCAD X Version 14.4.5 (3634)

Ch4233/Hearing Aid Compatibility Test (101x101x1): Measurement grid: dx=5mm, dy=5mm

Maximum value of peak Total field = 51.97 V/m

Device Reference Point: 0, 0, -6.3 mm

Reference Value = 63.729 V/m; Power Drift = 0.07 dB

Hearing Aid Near-Field Category: M4 (AWF 0 dB)

Peak E-field in V/m

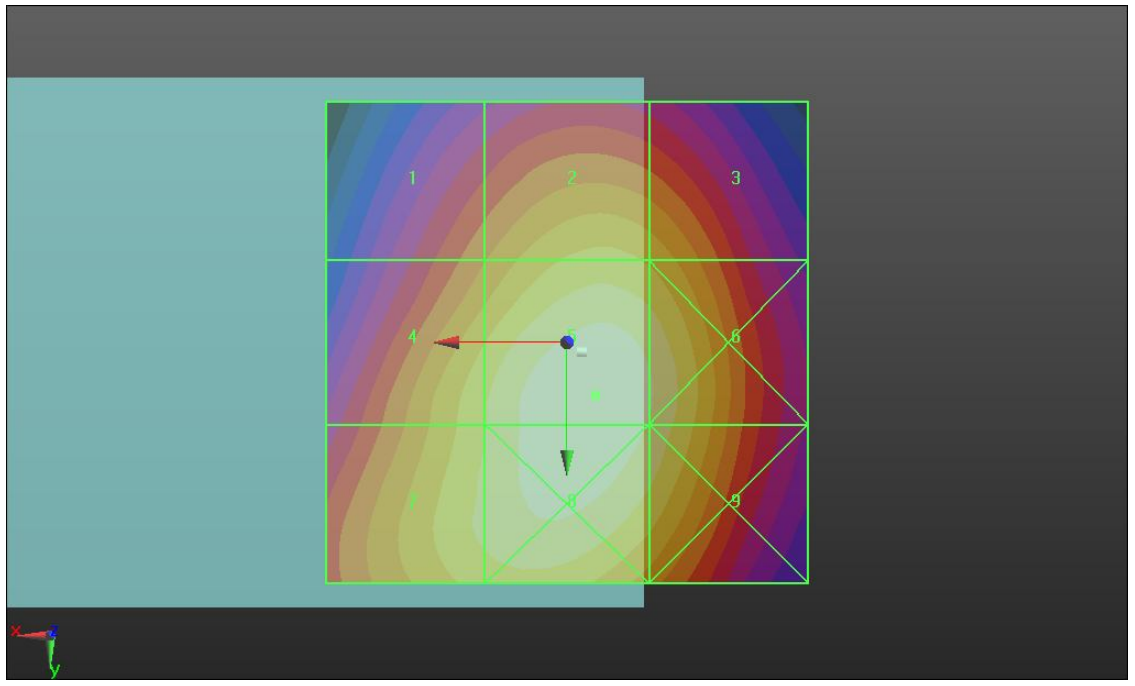
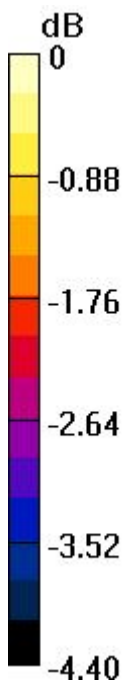
Grid 1 43.876 M4	Grid 2 47.615 M4	Grid 3 46.760 M4
Grid 4 48.526 M4	Grid 5 51.970 M4	Grid 6 50.497 M4
Grid 7 49.024 M4	Grid 8 51.725 M4	Grid 9 50.106 M4

Cursor:

Total = 51.970 V/m

E Category: M4

Location: -3, 5.5, 8.7 mm



0 dB = 51.970V/m

13 HAC_RF_WCDMA V_RMC 12.2K_Ch4233_#1_H

DUT: 240604-01A

Communication System: UMTS; Frequency: 846.6 MHz; Duty Cycle: 1:1

Medium: Air Medium parameters used: $\sigma = 0$ mho/m, $\epsilon_r = 1$; $\rho = 0$ kg/m³

Ambient Temperature : 23.5 °C

DASY5 Configuration:

- Probe: H3DV6 - SN6305; ; Calibrated: 11.01.2013
- Electronics: DAE4 Sn1303; Calibrated: 22.11.2012
- Phantom: HAC Test Arch; Type: SD HAC P01 BA;
- Measurement SW: DASY52, Version 52.8 (2); SEMCAD X Version 14.4.5 (3634)

Ch4233/Hearing Aid Compatibility Test (101x101x1): Measurement grid: dx=5mm, dy=5mm

Maximum value of peak Total field = 0.102 A/m

Device Reference Point: 0, 0, -6.3 mm

Reference Value = 0.063 A/m; Power Drift = 0.04 dB

Hearing Aid Near-Field Category: M4 (AWF 0 dB)

Peak H-field in A/m

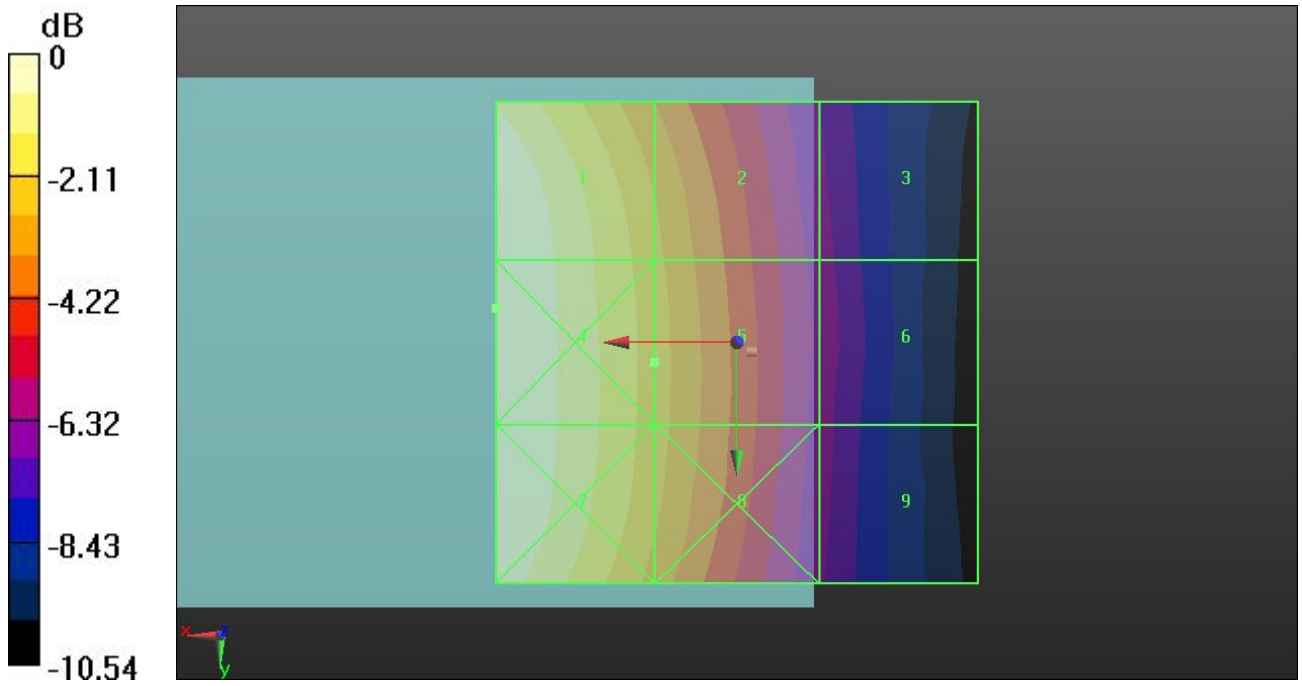
Grid 1 0.102 M4	Grid 2 0.074 M4	Grid 3 0.047 M4
Grid 4 0.102 M4	Grid 5 0.075 M4	Grid 6 0.047 M4
Grid 7 0.102 M4	Grid 8 0.075 M4	Grid 9 0.047 M4

Cursor:

Total = 0.102 A/m

H Category: M4

Location: 25, -3.5, 8.7 mm



0 dB = 0.100A/m

14 HAC_RF_WCDMA V_RMC 12.2K_Ch4233_#2_E

DUT: 240604-01A

Communication System: UMTS; Frequency: 846.6 MHz; Duty Cycle: 1:1

Medium: Air Medium parameters used: $\sigma = 0$ mho/m, $\epsilon_r = 1$; $\rho = 0$ kg/m³

Ambient Temperature : 23.5 °C

DASY5 Configuration:

- Probe: ER3DV6 - SN2302; ConvF(1, 1, 1); Calibrated: 20.06.2012
- Electronics: DAE4 Sn1303; Calibrated: 22.11.2012
- Phantom: HAC Test Arch with AMCC; Type: SD HAC P01 BA;
- Measurement SW: DASY52, Version 52.8 (2); SEMCAD X Version 14.4.5 (3634)

Ch4233/Hearing Aid Compatibility Test (101x101x1): Measurement grid: dx=5mm, dy=5mm

Maximum value of peak Total field = 49.306 V/m

Device Reference Point: 0, 0, -6.3 mm

Reference Value = 61.733 V/m; Power Drift = 0.02 dB

Hearing Aid Near-Field Category: M4 (AWF 0 dB)

Peak E-field in V/m

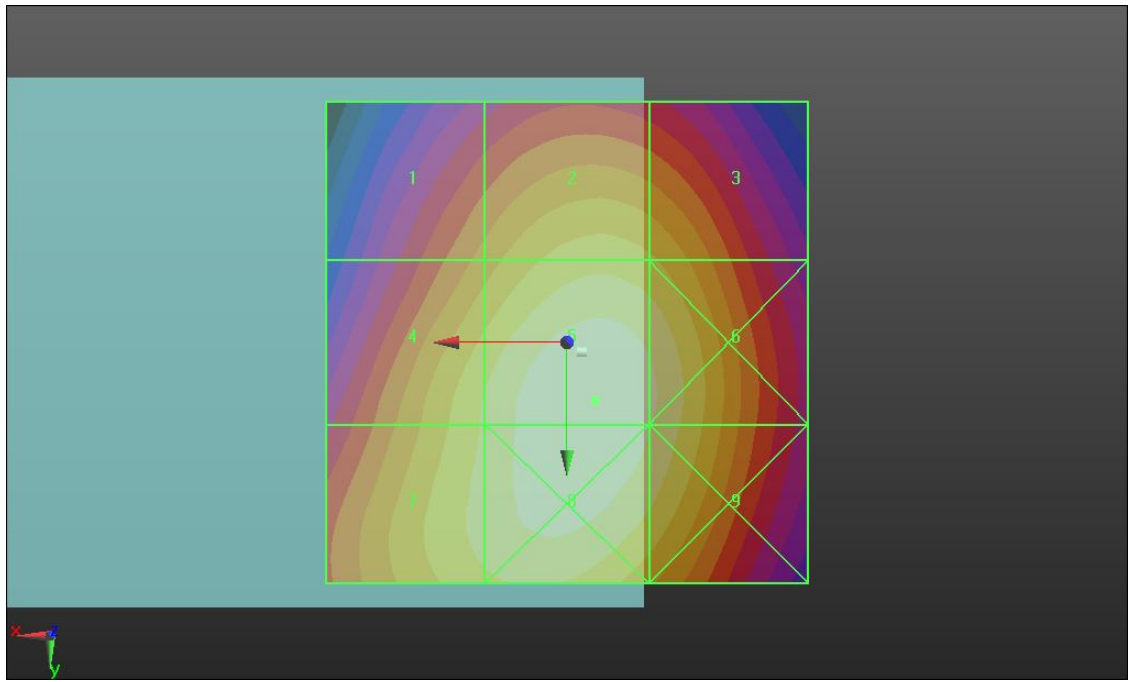
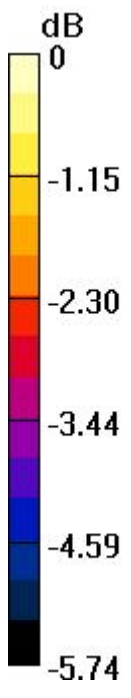
Grid 1 40.443 M4	Grid 2 44.545 M4	Grid 3 43.620 M4
Grid 4 45.457 M4	Grid 5 49.306 M4	Grid 6 47.670 M4
Grid 7 45.993 M4	Grid 8 49.161 M4	Grid 9 47.356 M4

Cursor:

Total = 49.306 V/m

E Category: M4

Location: -3, 6, 8.7 mm



0 dB = 49.310V/m

14 HAC_RF_WCDMA V_RMC 12.2K_Ch4233_#2_H

DUT: 240604-01A

Communication System: UMTS; Frequency: 846.6 MHz; Duty Cycle: 1:1
 Medium: Air Medium parameters used: $\sigma = 0$ mho/m, $\epsilon_r = 1$; $\rho = 0$ kg/m³
 Ambient Temperature : 23.5 °C

DASY5 Configuration:

- Probe: H3DV6 - SN6305; ; Calibrated: 11.01.2013
- Electronics: DAE4 Sn1303; Calibrated: 22.11.2012
- Phantom: HAC Test Arch; Type: SD HAC P01 BA;
- Measurement SW: DASY52, Version 52.8 (2); SEMCAD X Version 14.4.5 (3634)

Ch4233/Hearing Aid Compatibility Test (101x101x1): Measurement grid: dx=5mm, dy=5mm

Maximum value of peak Total field = 0.101 A/m

Device Reference Point: 0, 0, -6.3 mm

Reference Value = 0.063 A/m; Power Drift = -0.01 dB

Hearing Aid Near-Field Category: M4 (AWF 0 dB)

Peak H-field in A/m

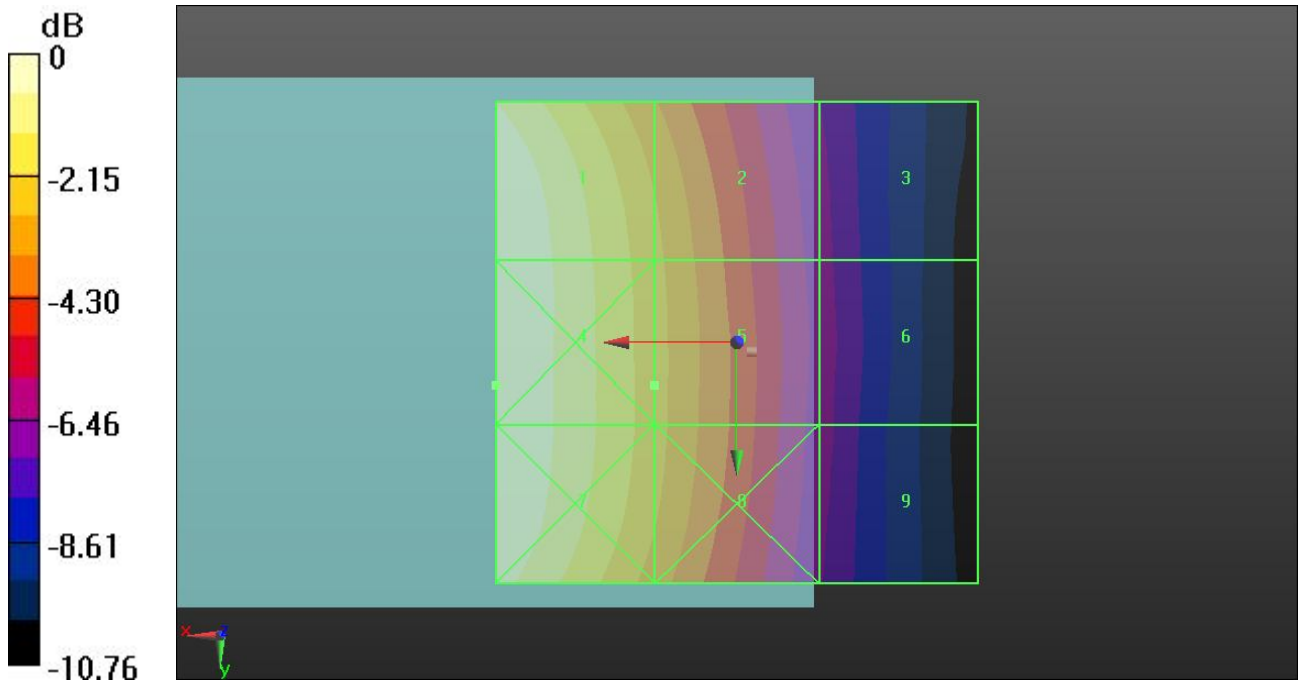
Grid 1 0.101 M4	Grid 2 0.074 M4	Grid 3 0.046 M4
Grid 4 0.102 M4	Grid 5 0.074 M4	Grid 6 0.046 M4
Grid 7 0.101 M4	Grid 8 0.074 M4	Grid 9 0.046 M4

Cursor:

Total = 0.102 A/m

H Category: M4

Location: 25, 4.5, 8.7 mm



0 dB = 0.100A/m

15 HAC_RF_WCDMA V_RMC 12.2K_Ch4233_#3_E

DUT: 240604-01A

Communication System: UMTS; Frequency: 846.6 MHz; Duty Cycle: 1:1

Medium: Air Medium parameters used: $\sigma = 0$ mho/m, $\epsilon_r = 1$; $\rho = 0$ kg/m³

Ambient Temperature : 23.5 °C

DASY5 Configuration:

- Probe: ER3DV6 - SN2302; ConvF(1, 1, 1); Calibrated: 20.06.2012
- Electronics: DAE4 Sn1303; Calibrated: 22.11.2012
- Phantom: HAC Test Arch with AMCC; Type: SD HAC P01 BA;
- Measurement SW: DASY52, Version 52.8 (2); SEMCAD X Version 14.4.5 (3634)

Ch4233/Hearing Aid Compatibility Test (101x101x1): Measurement grid: dx=5mm, dy=5mm

Maximum value of peak Total field = 45.823 V/m

Device Reference Point: 0, 0, -6.3 mm

Reference Value = 56.460 V/m; Power Drift = 0.0057 dB

Hearing Aid Near-Field Category: M4 (AWF 0 dB)

Peak E-field in V/m

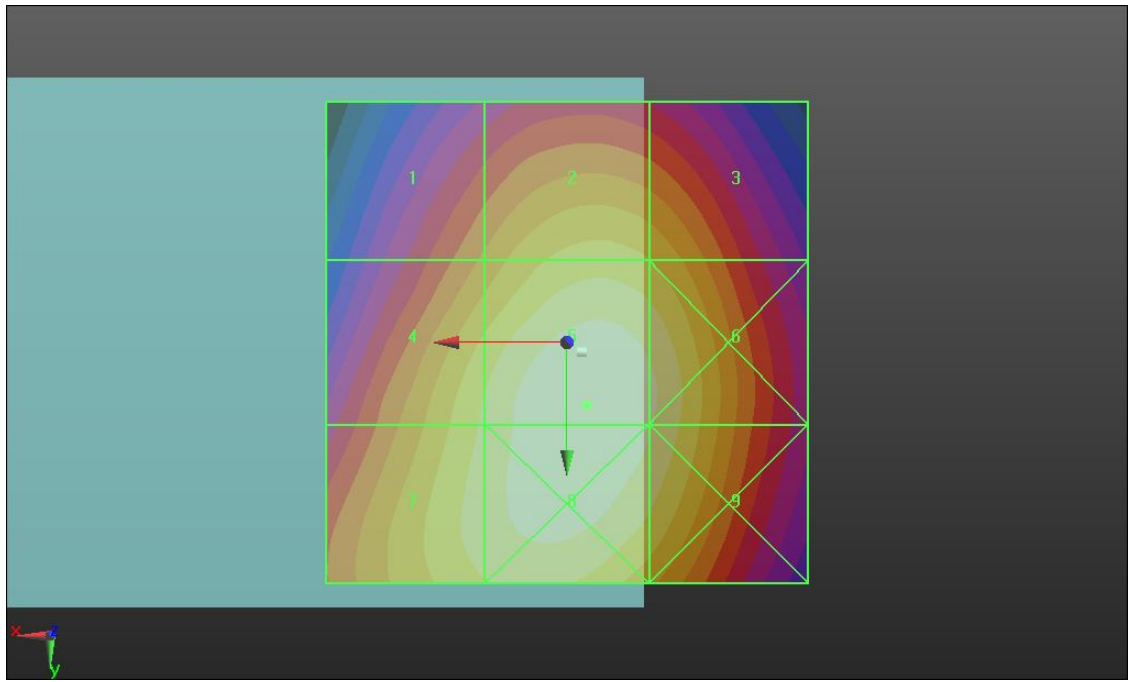
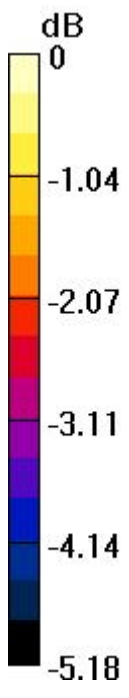
Grid 1 37.989 M4	Grid 2 41.614 M4	Grid 3 40.770 M4
Grid 4 42.689 M4	Grid 5 45.823 M4	Grid 6 44.491 M4
Grid 7 43.273 M4	Grid 8 45.699 M4	Grid 9 44.226 M4

Cursor:

Total = 45.823 V/m

E Category: M4

Location: -2, 6.5, 8.7 mm



0 dB = 45.820V/m

15 HAC_RF_WCDMA V_RMC 12.2K_Ch4233_#3_H

DUT: 240604-01A

Communication System: UMTS; Frequency: 846.6 MHz; Duty Cycle: 1:1

Medium: Air Medium parameters used: $\sigma = 0$ mho/m, $\epsilon_r = 1$; $\rho = 0$ kg/m³

Ambient Temperature : 23.5 °C

DASY5 Configuration:

- Probe: H3DV6 - SN6305; ; Calibrated: 11.01.2013
- Electronics: DAE4 Sn1303; Calibrated: 22.11.2012
- Phantom: HAC Test Arch; Type: SD HAC P01 BA;
- Measurement SW: DASY52, Version 52.8 (2); SEMCAD X Version 14.4.5 (3634)

Ch4233/Hearing Aid Compatibility Test (101x101x1): Measurement grid: dx=5mm, dy=5mm

Maximum value of peak Total field = 0.095 A/m

Device Reference Point: 0, 0, -6.3 mm

Reference Value = 0.059 A/m; Power Drift = -0.04 dB

Hearing Aid Near-Field Category: M4 (AWF 0 dB)

Peak H-field in A/m

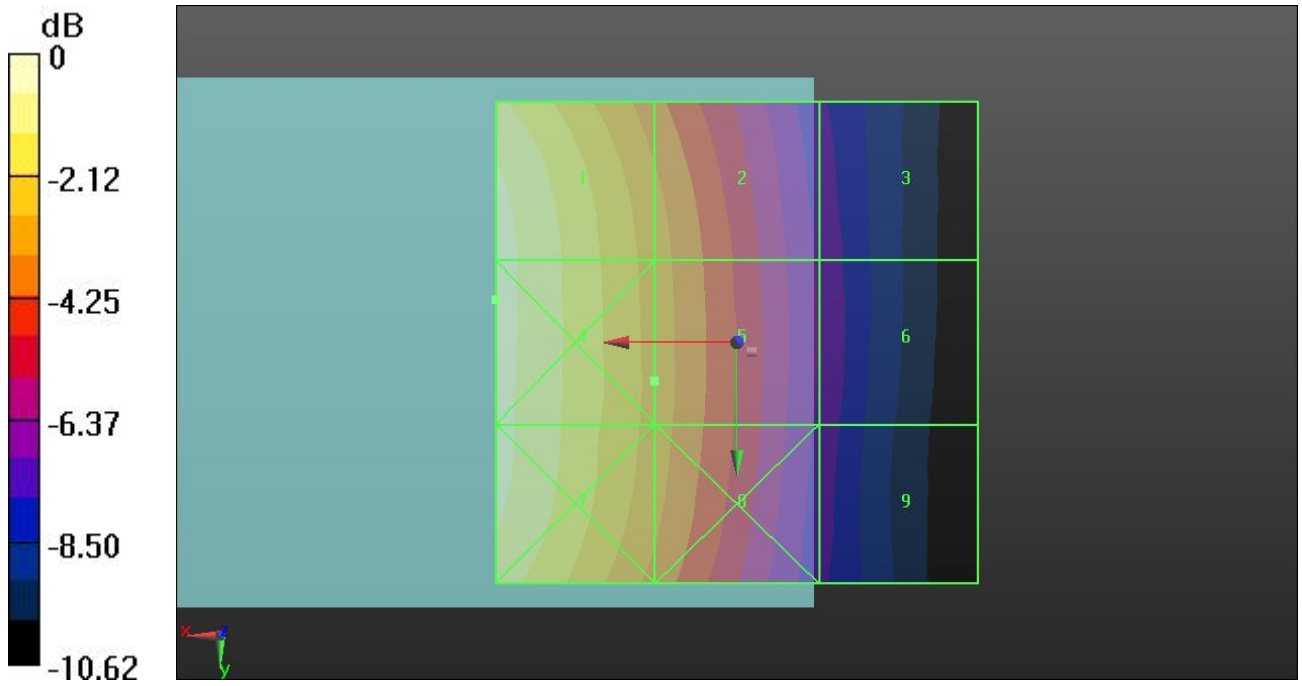
Grid 1 0.095 M4	Grid 2 0.069 M4	Grid 3 0.044 M4
Grid 4 0.095 M4	Grid 5 0.070 M4	Grid 6 0.044 M4
Grid 7 0.095 M4	Grid 8 0.070 M4	Grid 9 0.044 M4

Cursor:

Total = 0.095 A/m

H Category: M4

Location: 25, -4.5, 8.7 mm



0 dB = 0.100A/m

16 HAC_RF_WCDMA II_RMC 12.2K_Ch9262_#1_E

DUT: 240604-01A

Communication System: UMTS; Frequency: 1852.4 MHz; Duty Cycle: 1:1

Medium: Air Medium parameters used: $\sigma = 0$ mho/m, $\epsilon_r = 1$; $\rho = 0$ kg/m³

Ambient Temperature : 23.5 °C

DASY5 Configuration:

- Probe: ER3DV6 - SN2302; ConvF(1, 1, 1); Calibrated: 20.06.2012
- Electronics: DAE4 Sn1303; Calibrated: 22.11.2012
- Phantom: HAC Test Arch with AMCC; Type: SD HAC P01 BA;
- Measurement SW: DASY52, Version 52.8 (2); SEMCAD X Version 14.4.5 (3634)

Ch9262/Hearing Aid Compatibility Test (101x101x1): Measurement grid: dx=5mm, dy=5mm

Maximum value of peak Total field = 33.561 V/m

Device Reference Point: 0, 0, -6.3 mm

Reference Value = 39.942 V/m; Power Drift = -0.17 dB

Hearing Aid Near-Field Category: M4 (AWF 0 dB)

Peak E-field in V/m

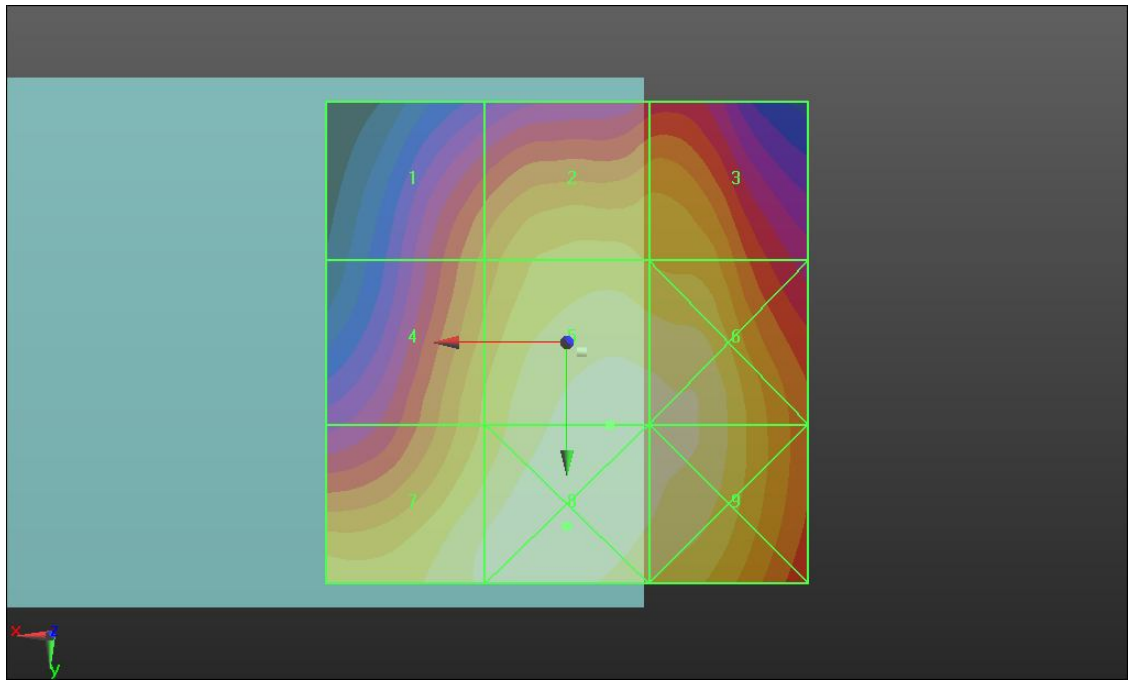
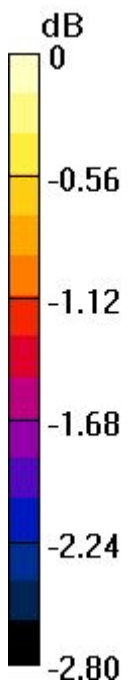
Grid 1 30.721 M4	Grid 2 32.116 M4	Grid 3 31.745 M4
Grid 4 31.945 M4	Grid 5 33.561 M4	Grid 6 33.472 M4
Grid 7 33.337 M4	Grid 8 33.907 M4	Grid 9 33.483 M4

Cursor:

Total = 33.907 V/m

E Category: M4

Location: 0, 19, 8.7 mm



0 dB = 33.910V/m

16 HAC_RF_WCDMA II_RMC 12.2K_Ch9262_#1_H

DUT: 240604-01A

Communication System: UMTS; Frequency: 1852.4 MHz; Duty Cycle: 1:1

Medium: Air Medium parameters used: $\sigma = 0$ mho/m, $\epsilon_r = 1$; $\rho = 0$ kg/m³

Ambient Temperature : 23.5 °C

DASY5 Configuration:

- Probe: H3DV6 - SN6305; ; Calibrated: 11.01.2013
- Electronics: DAE4 Sn1303; Calibrated: 22.11.2012
- Phantom: HAC Test Arch; Type: SD HAC P01 BA;
- Measurement SW: DASY52, Version 52.8 (2); SEMCAD X Version 14.4.5 (3634)

Ch9262/Hearing Aid Compatibility Test (101x101x1): Measurement grid: dx=5mm, dy=5mm

Maximum value of peak Total field = 0.094 A/m

Device Reference Point: 0, 0, -6.3 mm

Reference Value = 0.076 A/m; Power Drift = 0.00072 dB

Hearing Aid Near-Field Category: M4 (AWF 0 dB)

Peak H-field in A/m

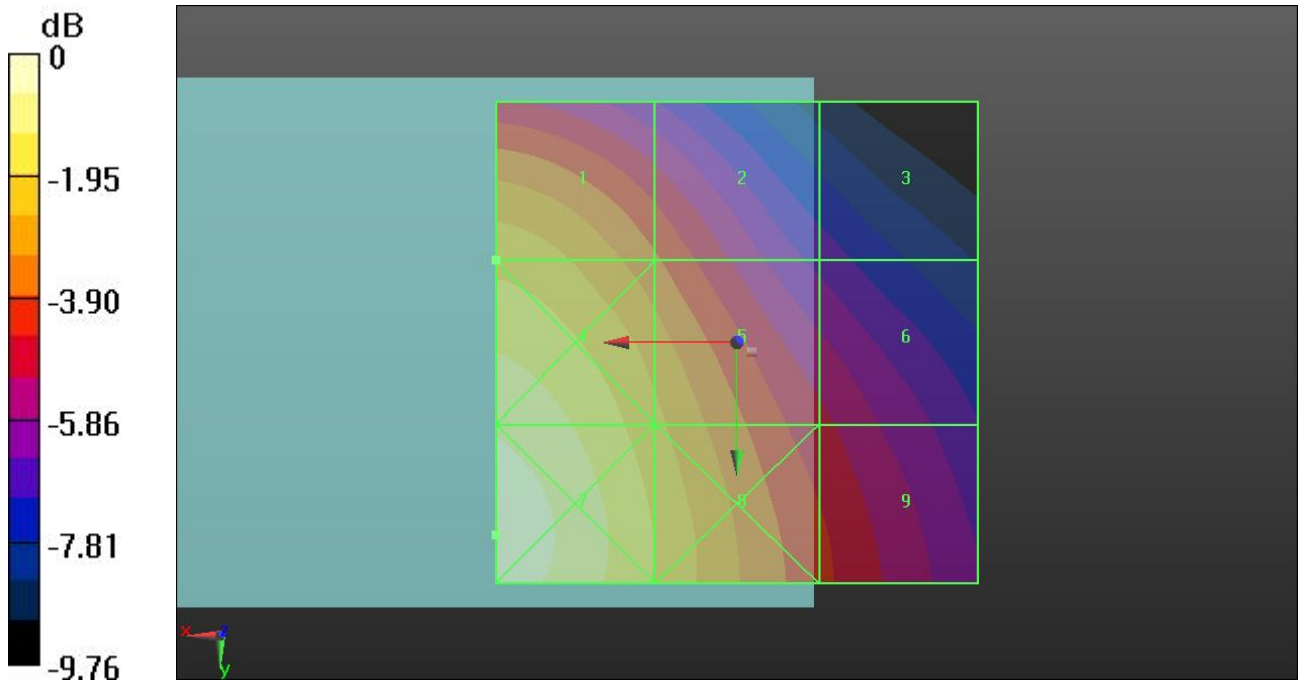
Grid 1 0.094 M4	Grid 2 0.078 M4	Grid 3 0.056 M4
Grid 4 0.110 M4	Grid 5 0.091 M4	Grid 6 0.068 M4
Grid 7 0.117 M4	Grid 8 0.096 M4	Grid 9 0.073 M4

Cursor:

Total = 0.117 A/m

H Category: M4

Location: 25, 20, 8.7 mm



0 dB = 0.120A/m

17 HAC_RF_WCDMA II_RMC 12.2K_Ch9262_#2_E

DUT: 240604-01A

Communication System: UMTS; Frequency: 1852.4 MHz; Duty Cycle: 1:1

Medium: Air Medium parameters used: $\sigma = 0$ mho/m, $\epsilon_r = 1$; $\rho = 0$ kg/m³

Ambient Temperature : 23.5 °C

DASY5 Configuration:

- Probe: ER3DV6 - SN2302; ConvF(1, 1, 1); Calibrated: 20.06.2012
- Electronics: DAE4 Sn1303; Calibrated: 22.11.2012
- Phantom: HAC Test Arch with AMCC; Type: SD HAC P01 BA;
- Measurement SW: DASY52, Version 52.8 (2); SEMCAD X Version 14.4.5 (3634)

Ch9262/Hearing Aid Compatibility Test (101x101x1): Measurement grid: dx=5mm, dy=5mm

Maximum value of peak Total field = 29.711 V/m

Device Reference Point: 0, 0, -6.3 mm

Reference Value = 36.076 V/m; Power Drift = -0.07 dB

Hearing Aid Near-Field Category: M4 (AWF 0 dB)

Peak E-field in V/m

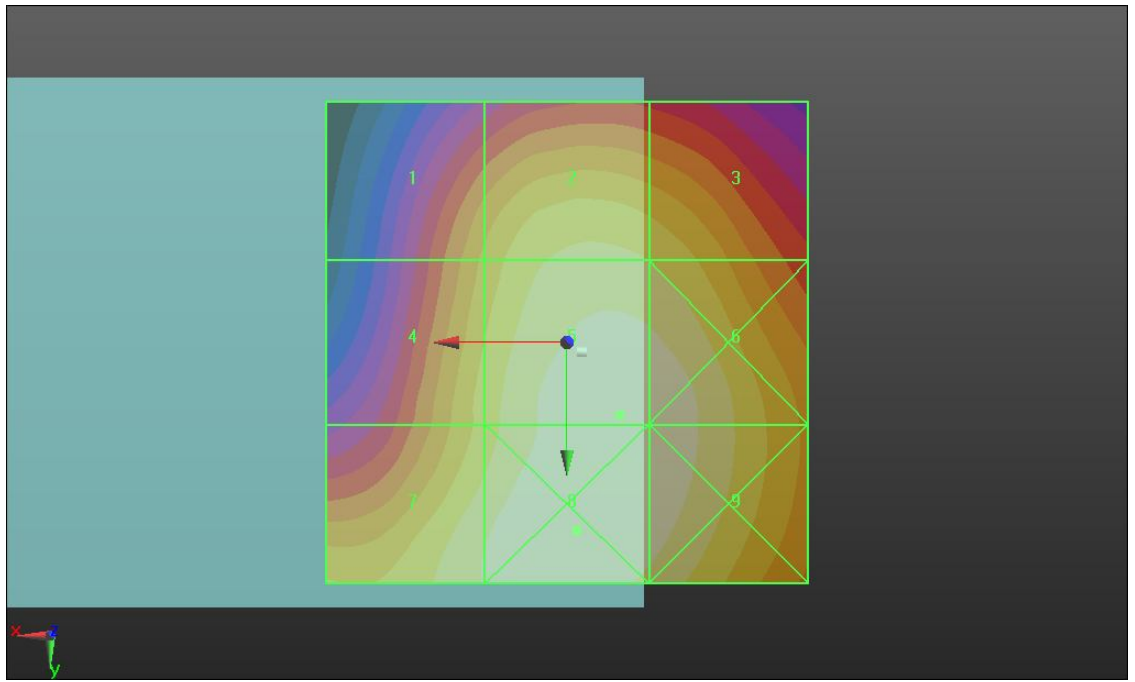
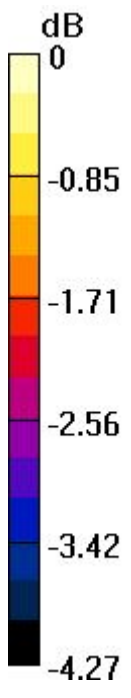
Grid 1 26.458 M4	Grid 2 28.288 M4	Grid 3 27.986 M4
Grid 4 27.524 M4	Grid 5 29.711 M4	Grid 6 29.628 M4
Grid 7 28.988 M4	Grid 8 29.865 M4	Grid 9 29.630 M4

Cursor:

Total = 29.865 V/m

E Category: M4

Location: -1, 19.5, 8.7 mm



0 dB = 29.870V/m

17 HAC_RF_WCDMA II_RMC 12.2K_Ch9262_#2_H

DUT: 240604-01A

Communication System: UMTS; Frequency: 1852.4 MHz; Duty Cycle: 1:1

Medium: Air Medium parameters used: $\sigma = 0$ mho/m, $\epsilon_r = 1$; $\rho = 0$ kg/m³

Ambient Temperature : 23.5 °C

DASY5 Configuration:

- Probe: H3DV6 - SN6305; ; Calibrated: 11.01.2013
- Electronics: DAE4 Sn1303; Calibrated: 22.11.2012
- Phantom: HAC Test Arch; Type: SD HAC P01 BA;
- Measurement SW: DASY52, Version 52.8 (2); SEMCAD X Version 14.4.5 (3634)

Ch9262/Hearing Aid Compatibility Test (101x101x1): Measurement grid: dx=5mm, dy=5mm

Maximum value of peak Total field = 0.093 A/m

Device Reference Point: 0, 0, -6.3 mm

Reference Value = 0.075 A/m; Power Drift = -0.0042 dB

Hearing Aid Near-Field Category: M4 (AWF 0 dB)

Peak H-field in A/m

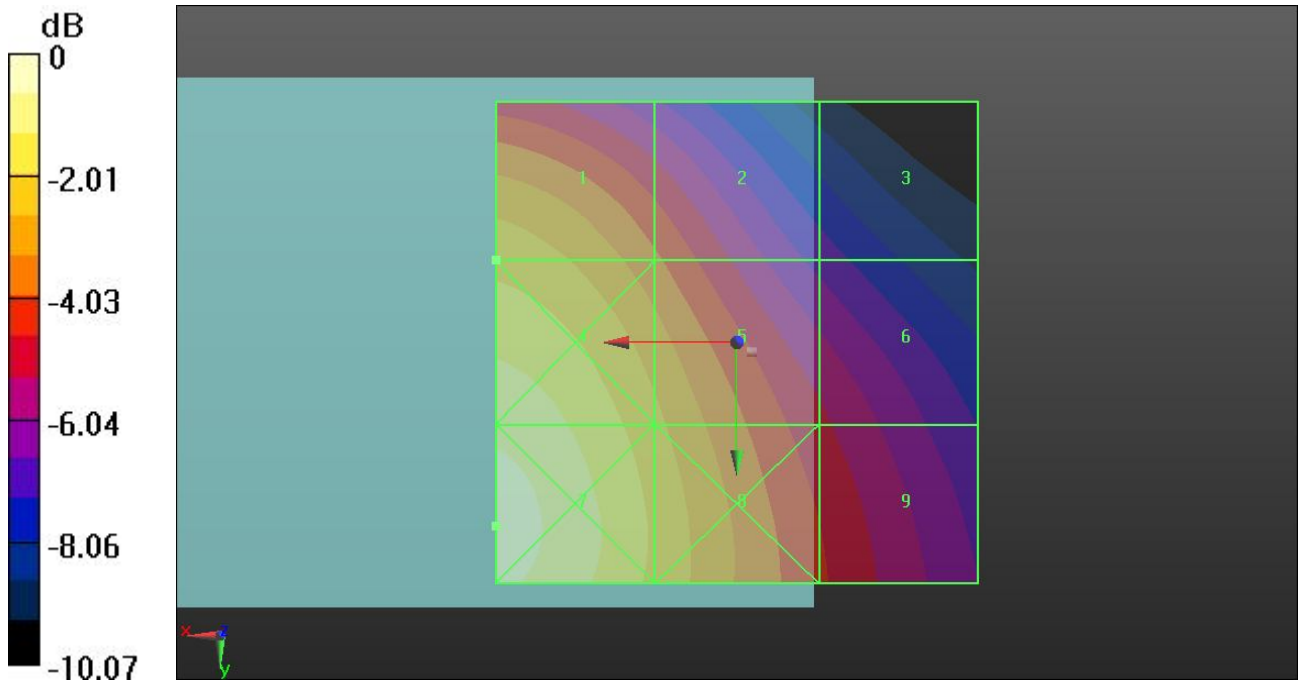
Grid 1 0.093 M4	Grid 2 0.077 M4	Grid 3 0.054 M4
Grid 4 0.109 M4	Grid 5 0.090 M4	Grid 6 0.066 M4
Grid 7 0.115 M4	Grid 8 0.094 M4	Grid 9 0.071 M4

Cursor:

Total = 0.115 A/m

H Category: M4

Location: 25, 19, 8.7 mm



0 dB = 0.120A/m

18 HAC_RF_WCDMA II_RMC 12.2K_Ch9262_#3_E

DUT: 240604-01A

Communication System: UMTS; Frequency: 1852.4 MHz; Duty Cycle: 1:1

Medium: Air Medium parameters used: $\sigma = 0$ mho/m, $\epsilon_r = 1$; $\rho = 0$ kg/m³

Ambient Temperature : 23.5 °C

DASY5 Configuration:

- Probe: ER3DV6 - SN2302; ConvF(1, 1, 1); Calibrated: 20.06.2012
- Electronics: DAE4 Sn1303; Calibrated: 22.11.2012
- Phantom: HAC Test Arch with AMCC; Type: SD HAC P01 BA;
- Measurement SW: DASY52, Version 52.8 (2); SEMCAD X Version 14.4.5 (3634)

Ch9262/Hearing Aid Compatibility Test (101x101x1): Measurement grid: dx=5mm, dy=5mm

Maximum value of peak Total field = 30.787 V/m

Device Reference Point: 0, 0, -6.3 mm

Reference Value = 36.973 V/m; Power Drift = -0.03 dB

Hearing Aid Near-Field Category: M4 (AWF 0 dB)

Peak E-field in V/m

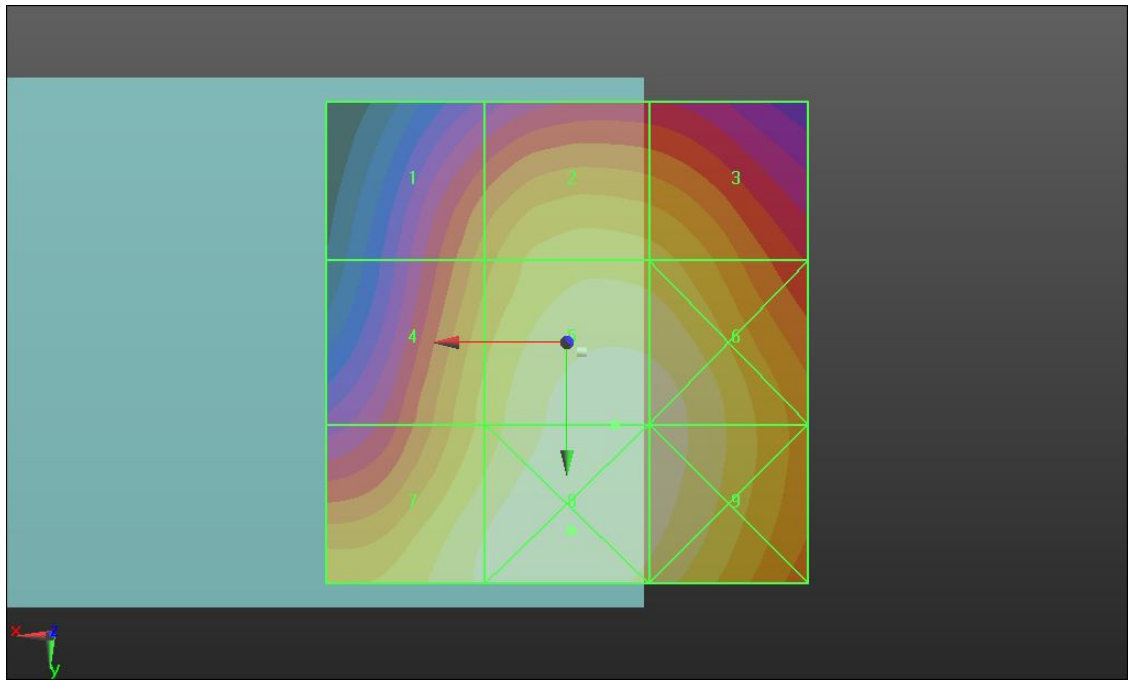
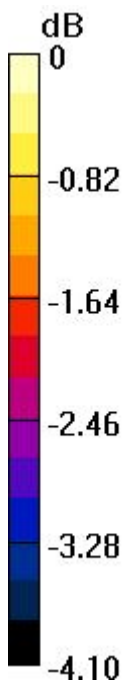
Grid 1 27.102 M4	Grid 2 28.967 M4	Grid 3 28.745 M4
Grid 4 28.681 M4	Grid 5 30.787 M4	Grid 6 30.700 M4
Grid 7 30.353 M4	Grid 8 31.114 M4	Grid 9 30.732 M4

Cursor:

Total = 31.114 V/m

E Category: M4

Location: -0.5, 19.5, 8.7 mm



0 dB = 31.110V/m

18 HAC_RF_WCDMA II_RMC 12.2K_Ch9262_#3_H

DUT: 240604-01A

Communication System: UMTS; Frequency: 1852.4 MHz; Duty Cycle: 1:1

Medium: Air Medium parameters used: $\sigma = 0$ mho/m, $\epsilon_r = 1$; $\rho = 0$ kg/m³

Ambient Temperature : 23.5 °C

DASY5 Configuration:

- Probe: H3DV6 - SN6305; ; Calibrated: 11.01.2013
- Electronics: DAE4 Sn1303; Calibrated: 22.11.2012
- Phantom: HAC Test Arch; Type: SD HAC P01 BA;
- Measurement SW: DASY52, Version 52.8 (2); SEMCAD X Version 14.4.5 (3634)

Ch9262/Hearing Aid Compatibility Test (101x101x1): Measurement grid: dx=5mm, dy=5mm

Maximum value of peak Total field = 0.093 A/m

Device Reference Point: 0, 0, -6.3 mm

Reference Value = 0.075 A/m; Power Drift = 0.02 dB

Hearing Aid Near-Field Category: M4 (AWF 0 dB)

Peak H-field in A/m

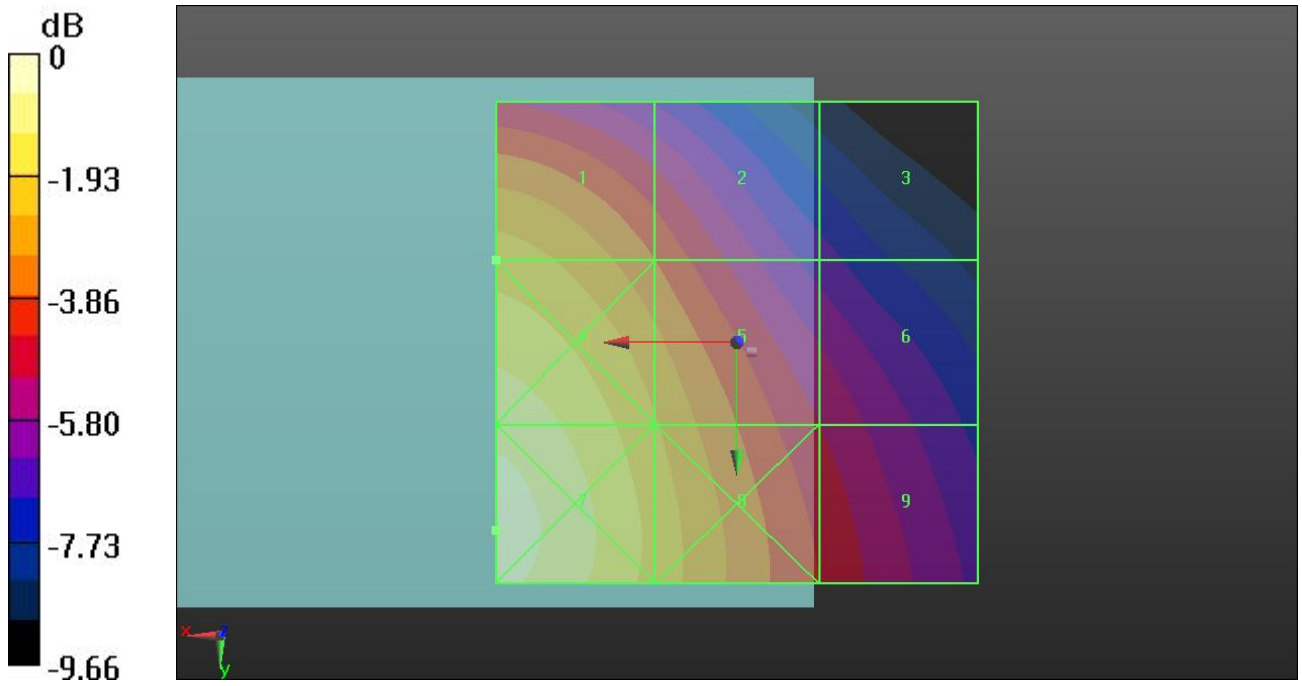
Grid 1 0.093 M4	Grid 2 0.077 M4	Grid 3 0.055 M4
Grid 4 0.109 M4	Grid 5 0.090 M4	Grid 6 0.067 M4
Grid 7 0.115 M4	Grid 8 0.094 M4	Grid 9 0.072 M4

Cursor:

Total = 0.115 A/m

H Category: M4

Location: 25, 19.5, 8.7 mm



0 dB = 0.120A/m



Appendix F. Product Equality Declaration

CK TELECOM LIMITED

Technology Road.High-Tech Development Zone. Heyuan, Guangdong,P.R.China.

TEL:0755-26739633/FAX:0755-26739500

Date: May 6, 2013

Product Equality Declaration

We, CK TELECOM LIMITED, declare on our sole responsibility for the product of Doro PhoneEasy 618(model) as below:

- 1、LCD model by TFT1N5757-E change to TFT1N5819-E
- 2、SIM Card by KWS6156N20R change to CAF99-06153-S527
- 3、Flash Memory by TY9A0A111300KA40 Change to TY9A0A111527K*
- 4、Software Version by APPLE-S01A_DORO618_L3EN_201_121106 change to APPLE-S01B_DORO618_L3EN_206_130423

Except Listings above, the others are the same as previous version.

Should you have any questions or comments regarding this matter, please have my best attention.

Sincerely yours,



Contact Person: Xin Li

Company: CK TELECOM LIMITED

Tel: +86-755-26739633

Fax: +86-755-26739500

E-Mail: xin.li@ck-telecom.com