

SAR Test Setup



Picture 1:Left Hand Touch Cheek Position



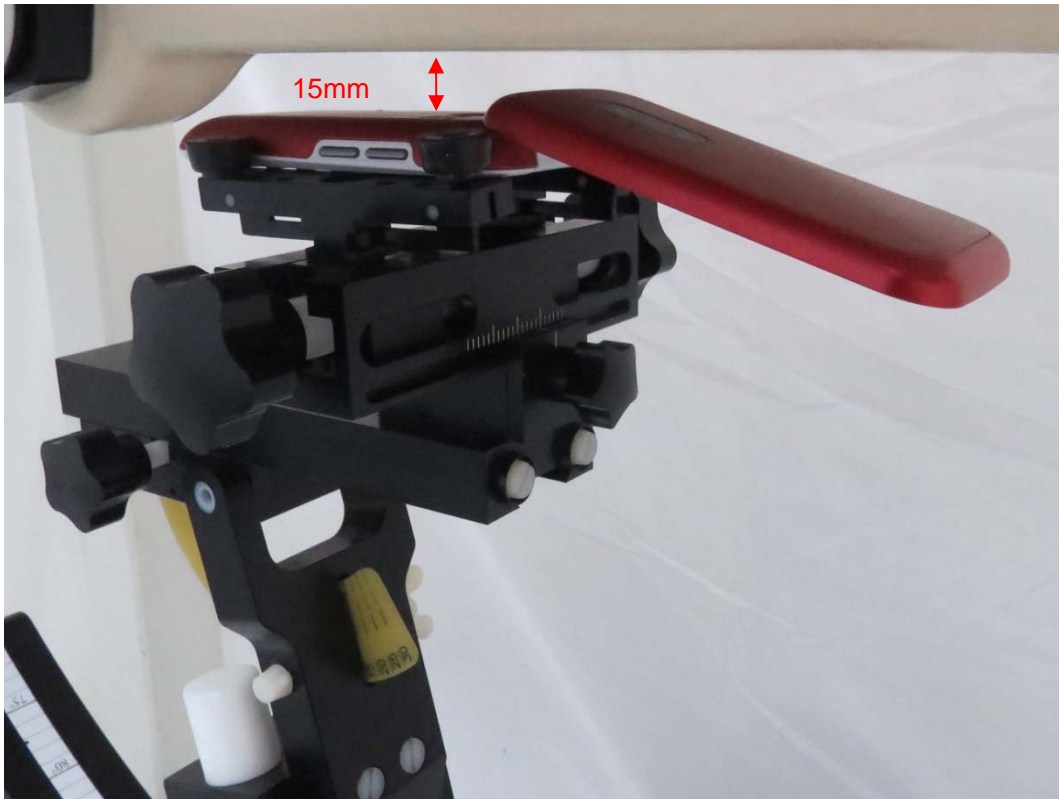
Picture 2: Left Hand Tilt 15 Degree Position



Picture 3: Right Hand Touch Cheek Position



Picture 4: Right Hand Tilt 15 Degree Position



Picture 5: Back Side Open, the distance from handset to the bottom of the Phantom is 15mm



Picture 6: Back Side Close, the distance from handset to the bottom of the Phantom is 15mm



Picture 7: Front Side Close, the distance from handset to the bottom of the Phantom is 15mm



Picture 8: Back Side Open, the distance from handset to the bottom of the Phantom is 10mm



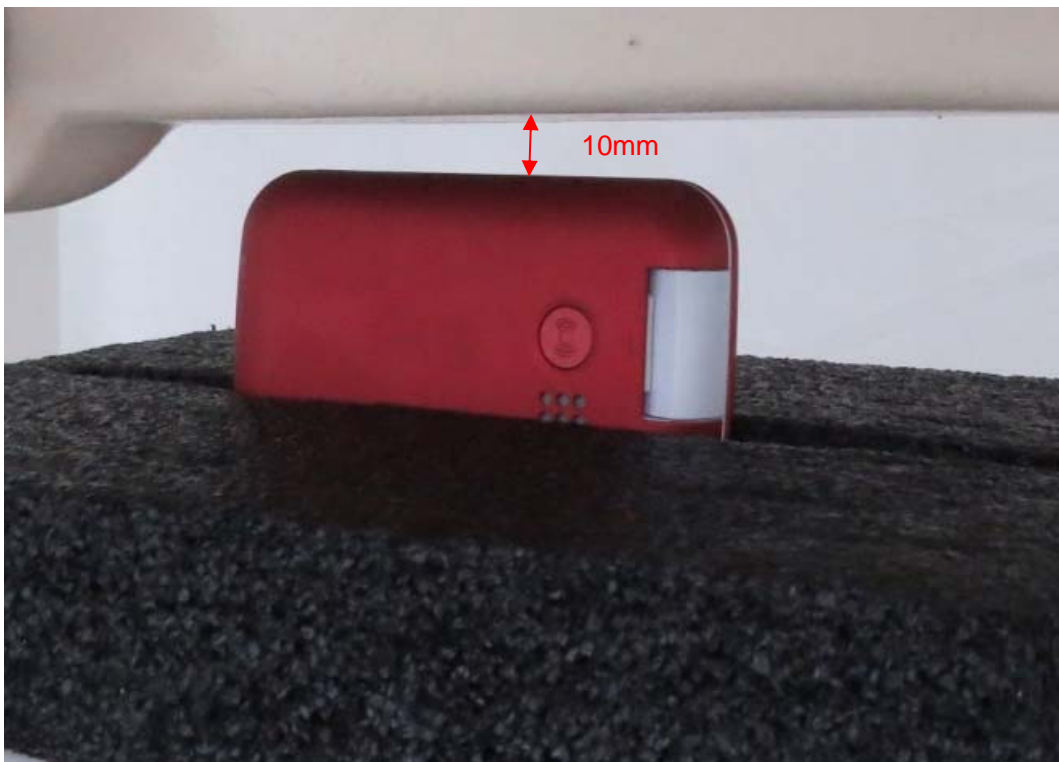
Picture 9: Back Side Close, the distance from handset to the bottom of the Phantom is 10mm



Picture 10: Front Side Close, the distance from handset to the bottom of the Phantom is 10mm



Picture 11: Left Side Close, the distance from handset to the bottom of the Phantom is 10mm



Picture 12: Right Side Close, the distance from handset to the bottom of the Phantom is 10mm



Picture 13: Top Side Close, the distance from handset to the bottom of the Phantom is 10mm



Picture 14: Bottom Side Close, the distance from handset to the bottom of the Phantom is 10mm



Picture 15: Back Side Open with Earphone, the distance from handset to the bottom of the Phantom is 10mm