

Annex 3: External photographs 20-1-0017102T02a-A3

Number of pages:	9	Date of Report:	2021-Mar-16
Testing company:	CETECOM GmbH Im Teelbruch 116 45219 Essen Germany Tel. + 49 (0) 20 54 / 95 19-0 Fax: + 49 (0) 20 54 / 95 19-150	Applicant:	SICK AG
Test Object / Tested Device(s):	UWB Tag, LOCU101-0110		
FCC ID:	WRMLOCU1	IC:	10066A-LOCU1
Testing has been carried out in accordance with:	Title 47 CFR, Chapter I FCC Regulations, Subchapter A §15.247 (DTS) ISED-Regulations RSS-Gen, Issue 5 RSS 247, Issue 2 Deviations, modifications or clarifications (if any) to above mentioned documents are written in each section under "Test method and limit".		

Table of Contents

Contents

1	External photographs of Main device under test (EUT/DUT)	3
2	External photographs of Accessories.....	7

1 External photographs of Main device under test (EUT/DUT)



Photograph 1: EUT 01_Top view



Photograph 2: EUT 01_Rear side view



Photograph 3: EUT 01_Left side view



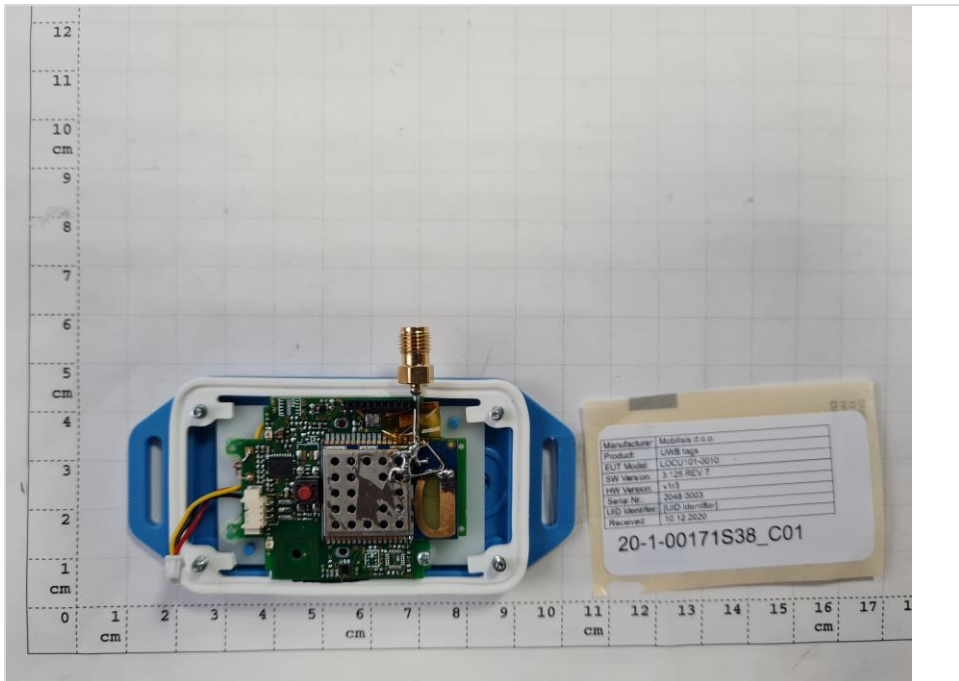
Photograph 4: EUT 01_Right side view



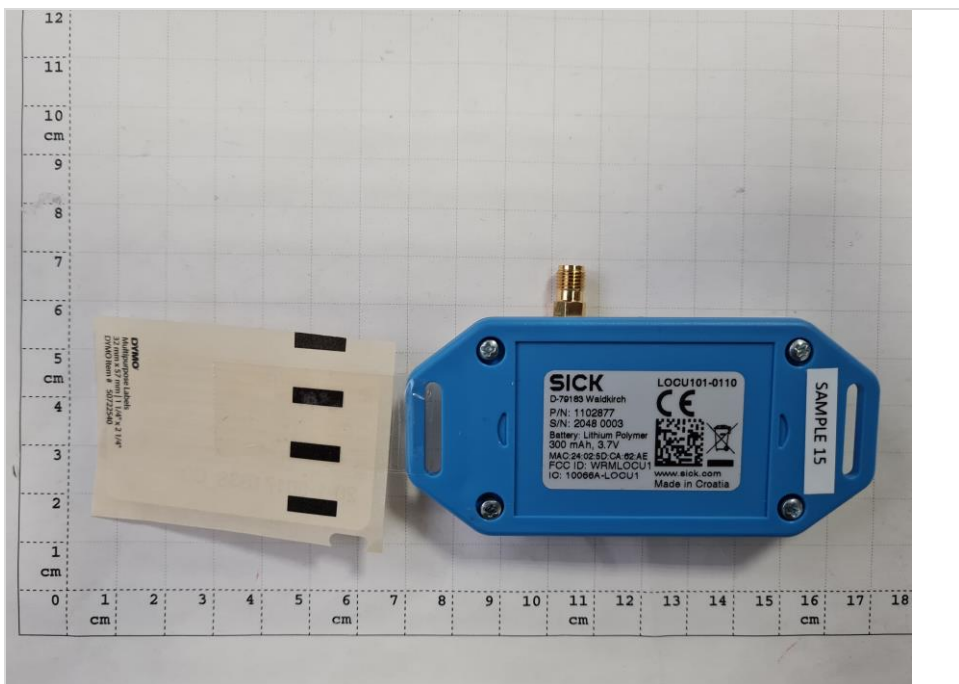
Photograph 5: EUT 01_front side view



Photograph 6: EUT 01_back side view



Photograph 7: EUT 02 conducted sample_top side view

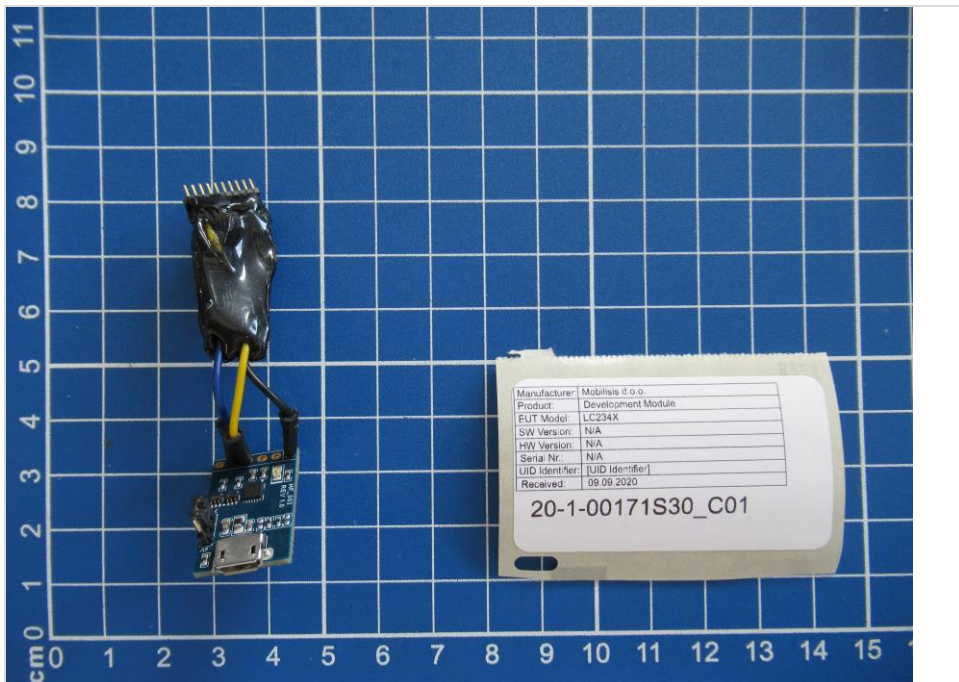


Photograph 8: EUT 02 conducted sample_rear side view

2 External photographs of Accessories



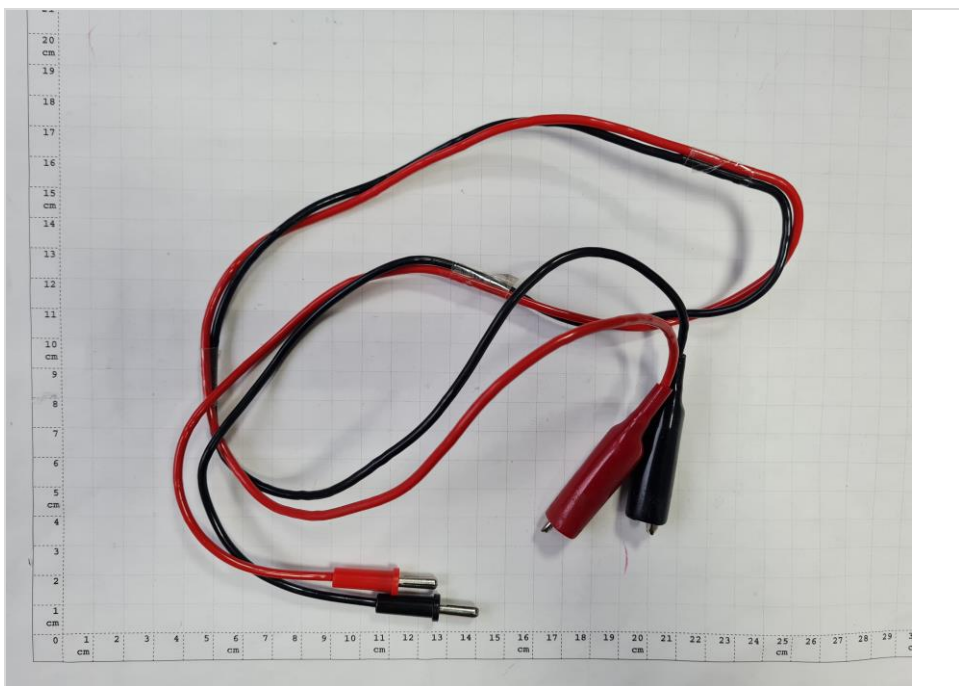
Photograph 1: AE 01



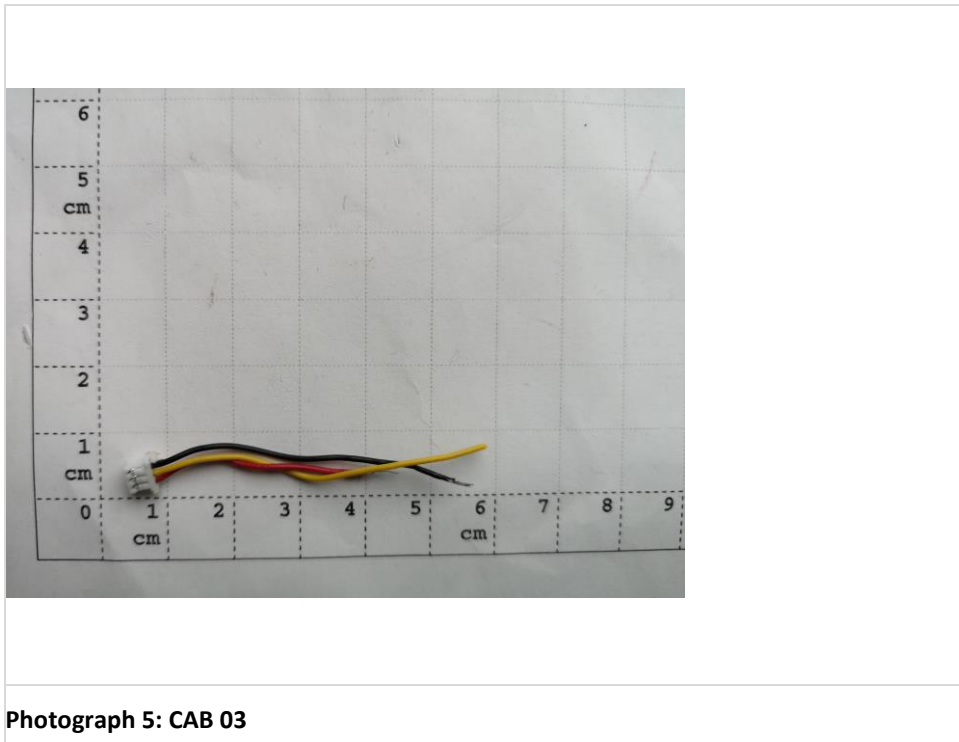
Photograph 2: AE 02



Photograph 3: CAB 01



Photograph 4: CAB 02



End Of Annex 3