

US Tech Test Report:
FCC ID:
IC:
Test Report Number:
Customer:
Model:

FCC Part 15/IC RSS Certification
WRH-MOD02
2788A-MOD02
21-0322
Scientific Games
PA25-0077

EXTERNAL PHOTOGRAPHS

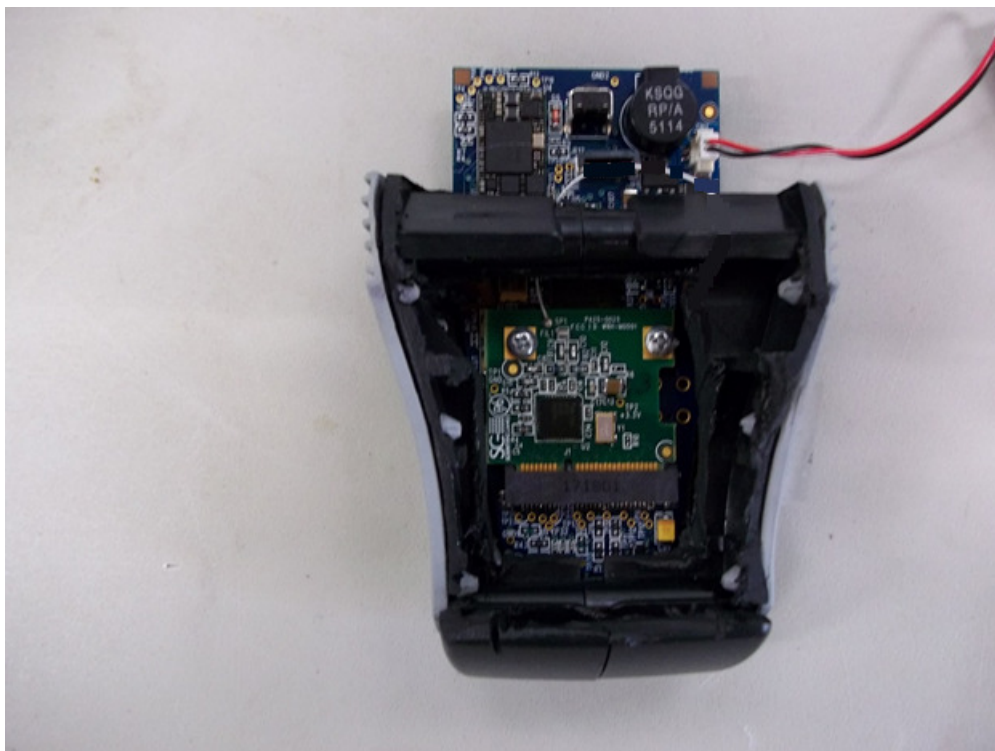


Figure 1. Radio Module on Evaluation Board in Plastic Housing

Note: Plastic housing was required so that the Evaluation board can be placed in a cradle to program the module. Once the module has been programmed the module + evaluation board + housing is removed from the cradle and tested as presented above.

US Tech Test Report:
FCC ID:
IC:
Test Report Number:
Customer:
Model:

FCC Part 15/IC RSS Certification
WRH-MOD02
2788A-MOD02
21-0322
Scientific Games
PA25-0077

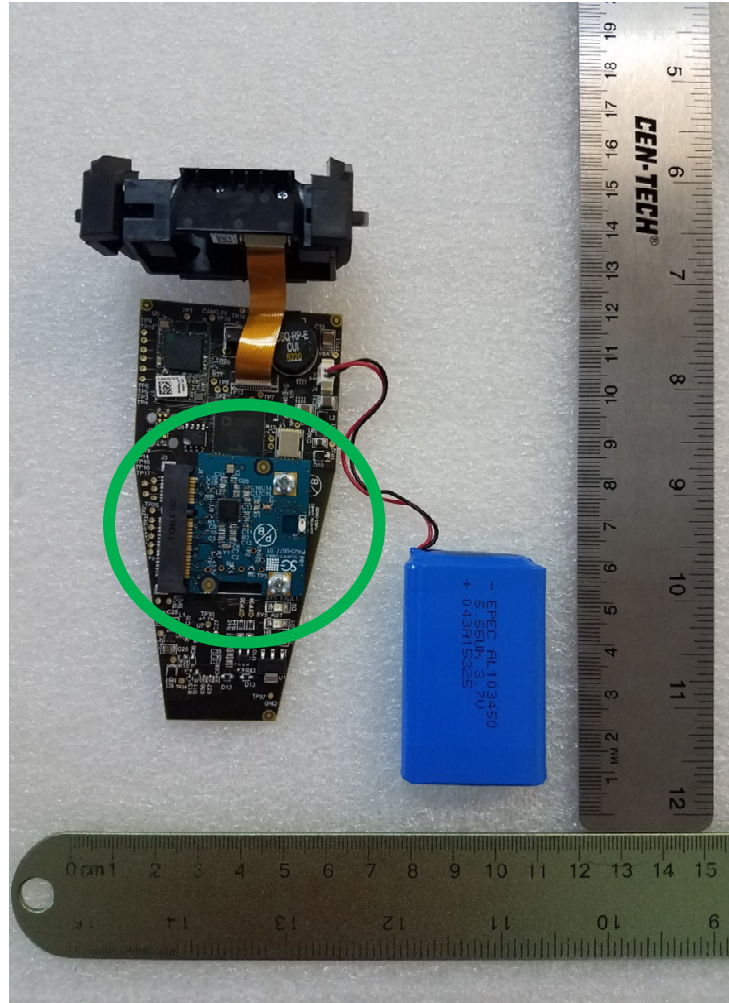


Figure 2. Radio Module installed in Host PCBA

US Tech Test Report:
FCC ID:
IC:
Test Report Number:
Customer:
Model:

FCC Part 15/IC RSS Certification
WRH-MOD02
2788A-MOD02
21-0322
Scientific Games
PA25-0077

EXTERNAL PHOTOGRAPHS of HOST DEVICE



Figure 3. Host Device- Side 1

US Tech Test Report:
FCC ID:
IC:
Test Report Number:
Customer:
Model:

FCC Part 15/IC RSS Certification
WRH-MOD02
2788A-MOD02
21-0322
Scientific Games
PA25-0077



Figure 4. Host Device- Side 2

US Tech Test Report:
FCC ID:
IC:
Test Report Number:
Customer:
Model:

FCC Part 15/IC RSS Certification
WRH-MOD02
2788A-MOD02
21-0322
Scientific Games
PA25-0077



Figure 5. Host Device- Front

US Tech Test Report:
FCC ID:
IC:
Test Report Number:
Customer:
Model:

FCC Part 15/IC RSS Certification
WRH-MOD02
2788A-MOD02
21-0322
Scientific Games
PA25-0077



Figure 6. Host Device- Back

US Tech Test Report:
FCC ID:
IC:
Test Report Number:
Customer:
Model:

FCC Part 15/IC RSS Certification
WRH-MOD02
2788A-MOD02
21-0322
Scientific Games
PA25-0077



Figure 7. Host Device- Top

US Tech Test Report:
FCC ID:
IC:
Test Report Number:
Customer:
Model:

FCC Part 15/IC RSS Certification
WRH-MOD02
2788A-MOD02
21-0322
Scientific Games
PA25-0077



Figure 8. Host Device- Bottom