

US Tech Test Report:
FCC ID:
IC:
Test Report Number:
Customer:
Model:

FCC Part 15/IC RSS Certification
WRH-MOD01
2788A-MOD01
19-0050
Scientific Games, Inc
PA25-0055

EXTERNAL PHOTOGRAPHS

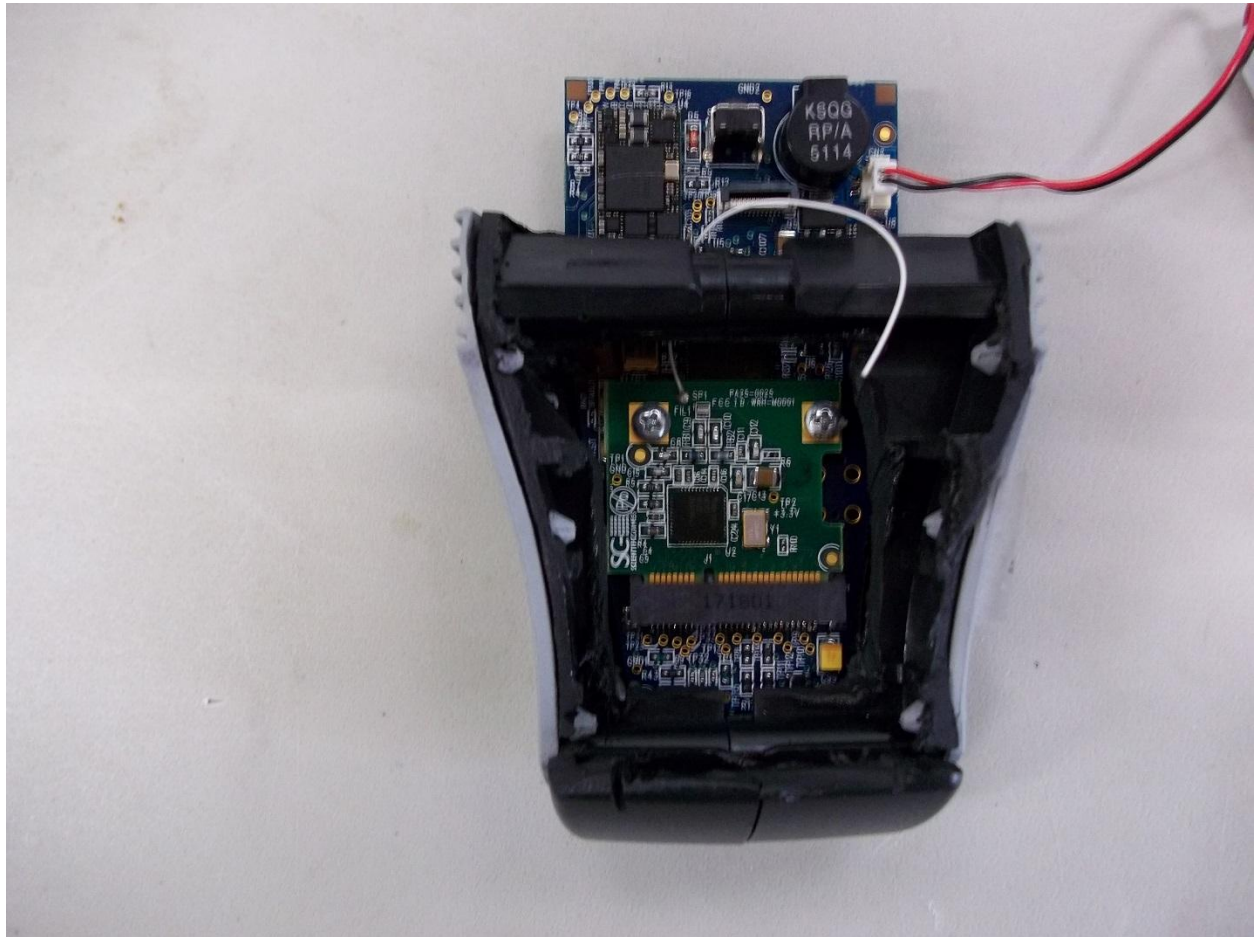


Figure 1. Radio Module on Evaluation Board in Plastic Housing

Note: Plastic housing was required so that the Evaluation board can be placed in a cradle to program the module. Once the module has been programmed the module + evaluation board + housing is removed from the cradle and tested as presented above.

US Tech Test Report:
FCC ID:
IC:
Test Report Number:
Customer:
Model:

FCC Part 15/IC RSS Certification
WRH-MOD01
2788A-MOD01
19-0050
Scientific Games, Inc
PA25-0055

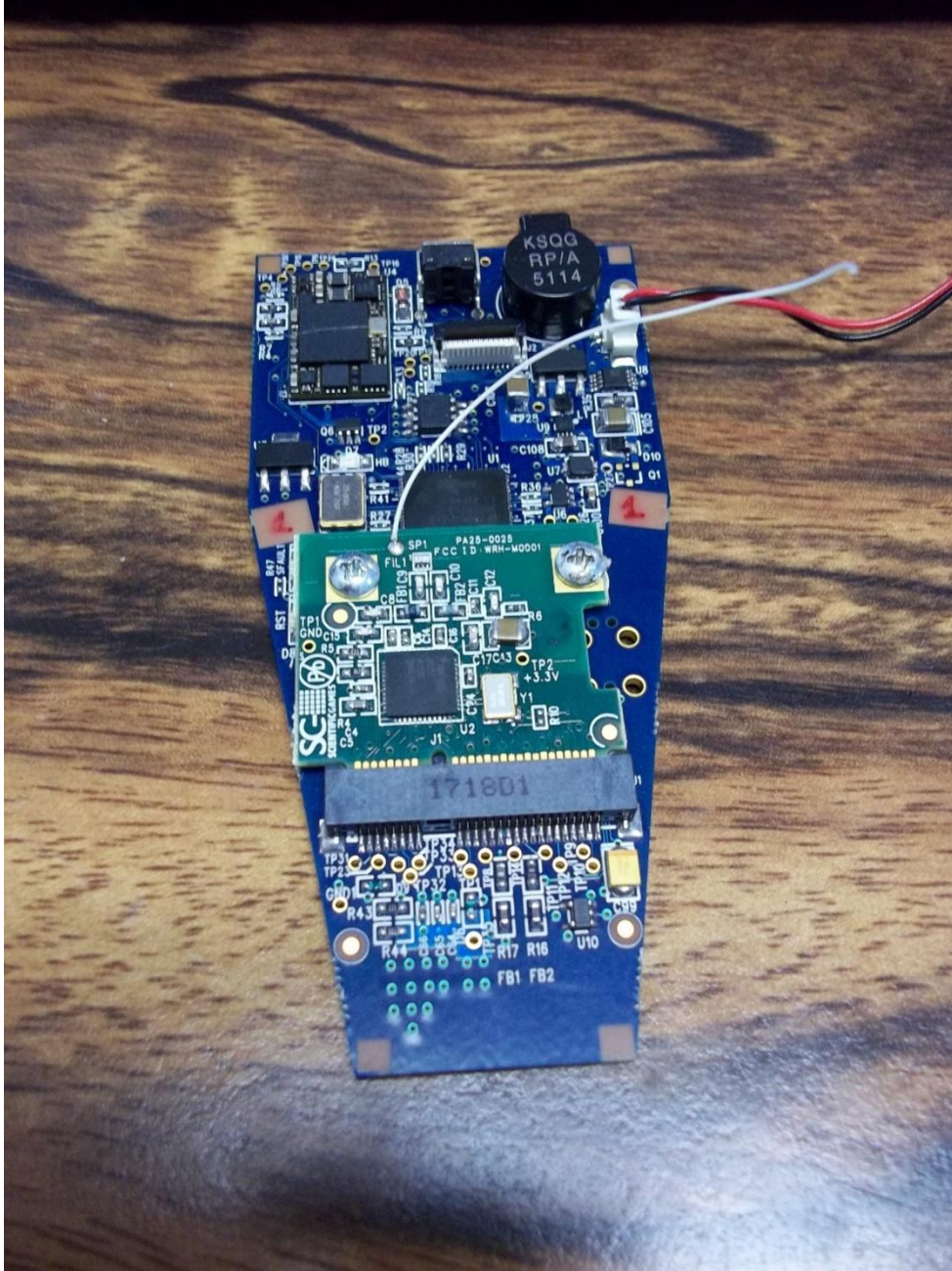


Figure 2. Radio Module + Evaluation Board Out of Plastic Housing