




Exhibit: Test Setup Photos

FCC ID: WR9EBSTAT3LT01
IC: 7981A-EBSTAT3LT01

Report File #: 7169007690R-000

Client	Ecobee Inc.	 Canada
Product	Ecobee3 Lite	
Standard(s)	RSS 247 Issue 2:2017 FCC Part 15 Subpart 15.247	

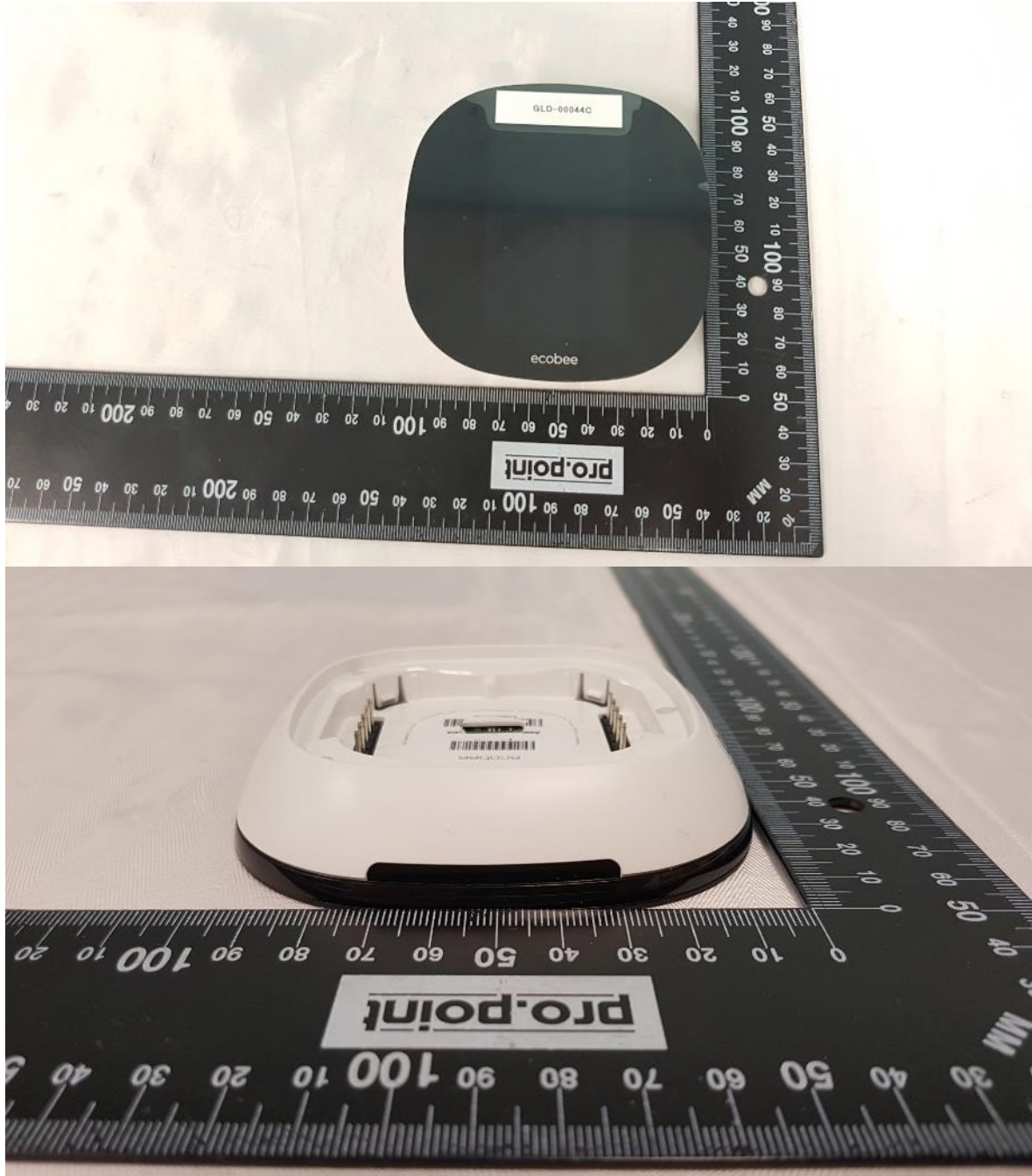



Figure 1 – EUT Close Ups

Client	Ecobee Inc.	
Product	Ecobee3 Lite	
Standard(s)	RSS 247 Issue 2:2017 FCC Part 15 Subpart 15.247	

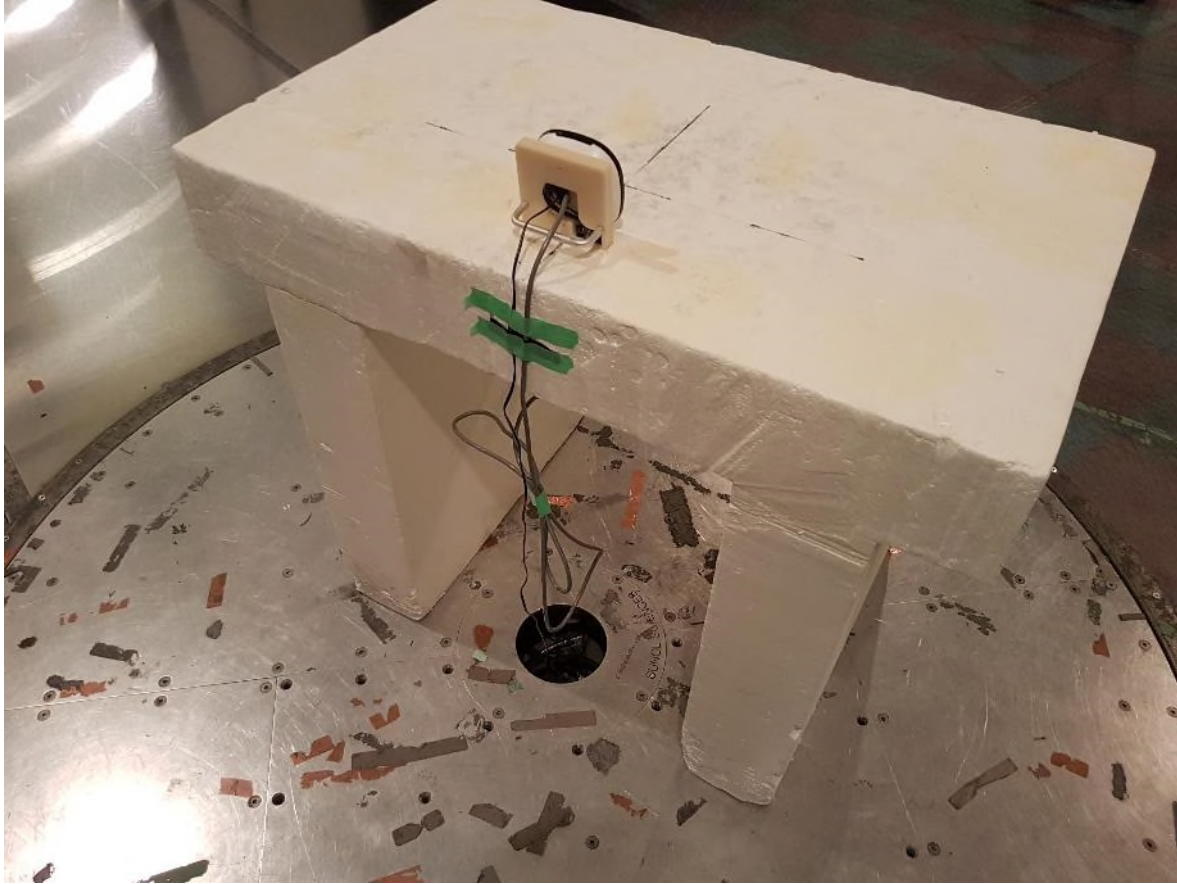


Figure 2 – Radiated Emissions Setup

Note: As per ANSI C63.10-2013 Clause 6.3.1, below 1GHz, the height of the EUT was set to 80cm. Above 1GHz, the height was raised to 1.5m.


Client	Ecobee Inc.	
Product	Ecobee3 Lite	
Standard(s)	RSS 247 Issue 2:2017 FCC Part 15 Subpart 15.247	



Figure 3 – Radiated Emissions Setup
9kHz – 30MHz


Client	Ecobee Inc.	
Product	Ecobee3 Lite	
Standard(s)	RSS 247 Issue 2:2017 FCC Part 15 Subpart 15.247	



Figure 4 – Radiated Emissions Setup
30MHz – 1GHz



Client	Ecobee Inc.	
Product	Ecobee3 Lite	
Standard(s)	RSS 247 Issue 2:2017 FCC Part 15 Subpart 15.247	



Figure 5 – Radiated Emissions Setup
1GHz – 18GHz

Client	Ecobee Inc.	
Product	Ecobee3 Lite	
Standard(s)	RSS 247 Issue 2:2017 FCC Part 15 Subpart 15.247	

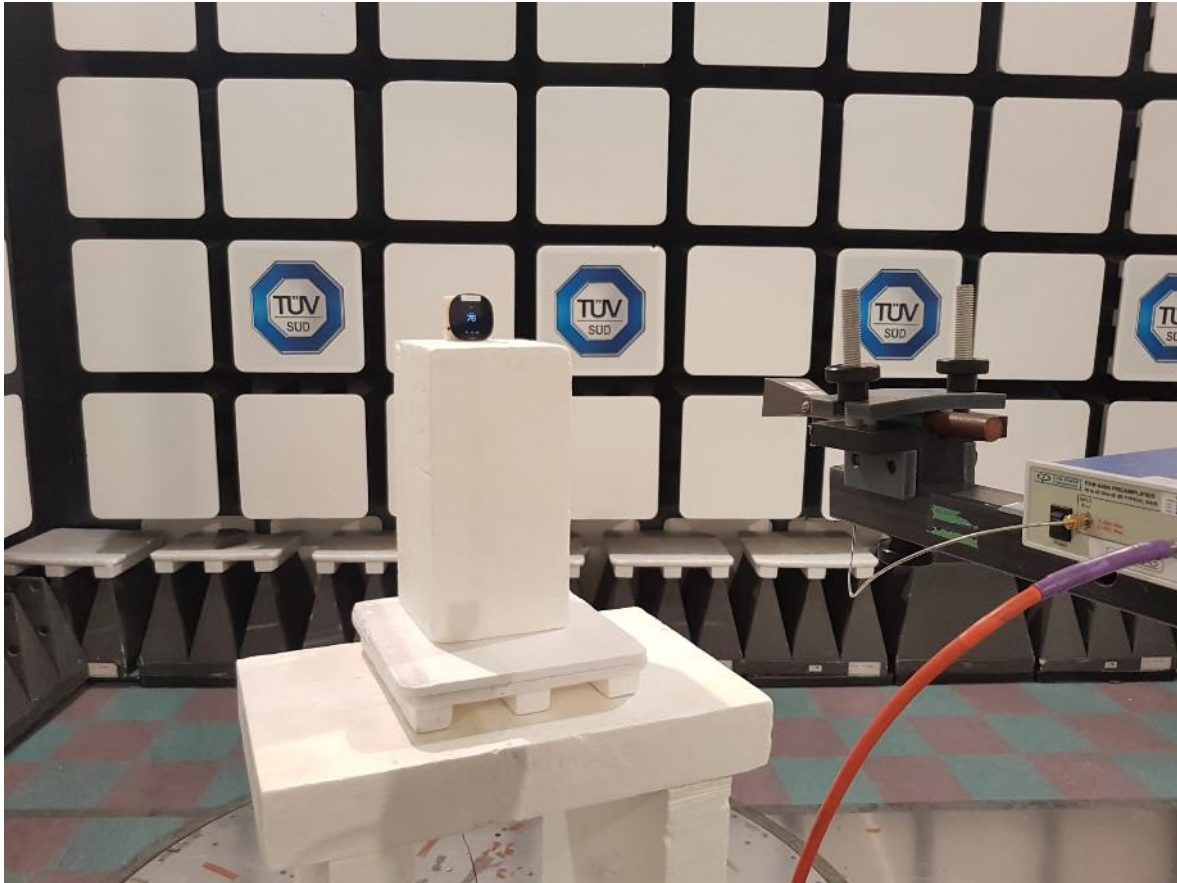


Figure 6 – Radiated Emissions Setup
18GHz – 25GHz