



| | | |
|-------------|---|---|
| Client | Ecobee Inc |  Canada |
| Product | Athena RS Gen 2 | |
| Standard(s) | RSS 247 Issue 1 / FCC Part 15 Subpart C 15:2016 | |



Illustration 1: EUT internal view without battery

| | | |
|-------------|---|---|
| Client | Ecobee Inc |  Canada |
| Product | Athena RS Gen 2 | |
| Standard(s) | RSS 247 Issue 1 / FCC Part 15 Subpart C 15:2016 | |

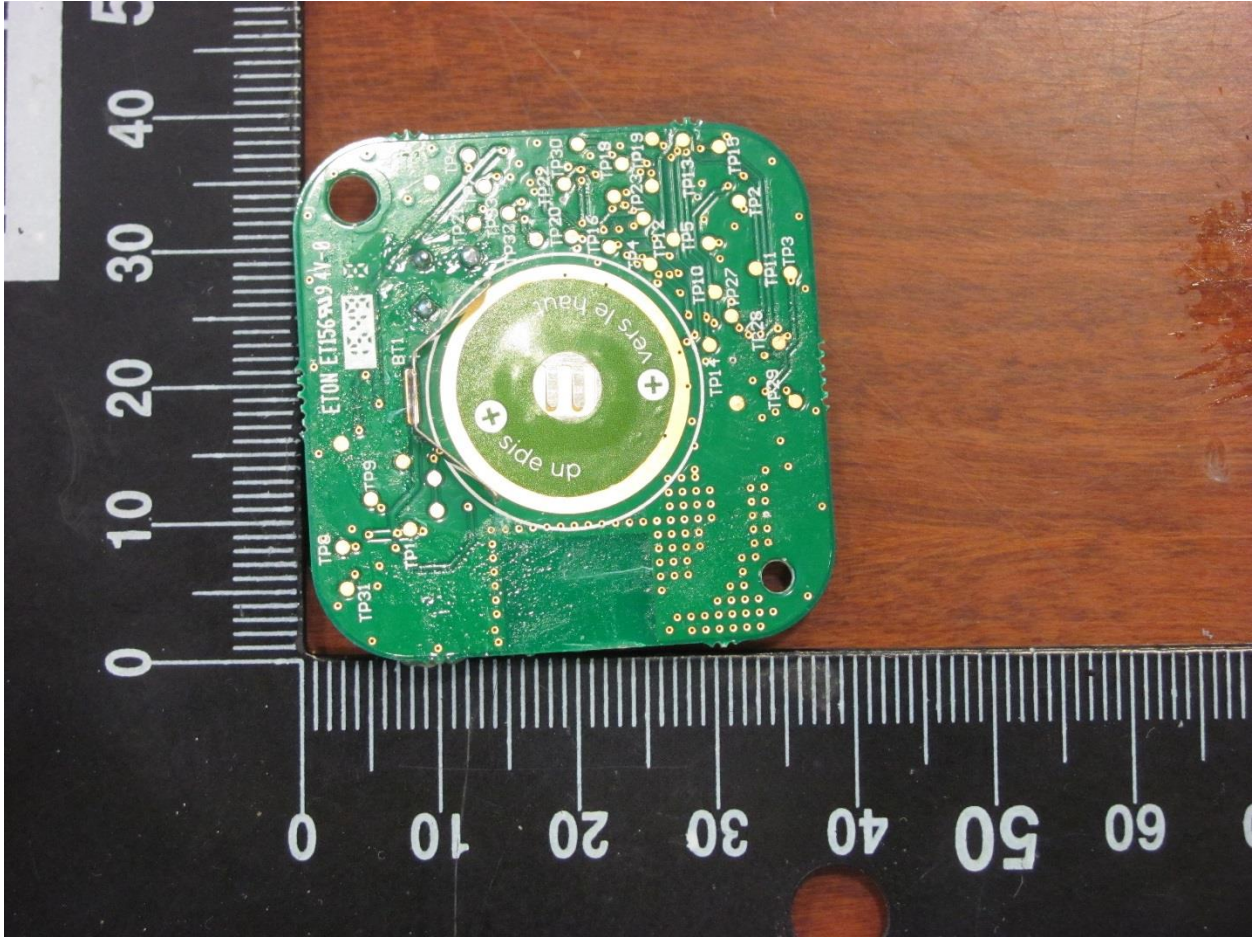



Illustration 2: EUT internal view, PCB rear

| | | |
|-------------|---|---|
| Client | Ecobee Inc |  Canada |
| Product | Athena RS Gen 2 | |
| Standard(s) | RSS 247 Issue 1 / FCC Part 15 Subpart C 15:2016 | |

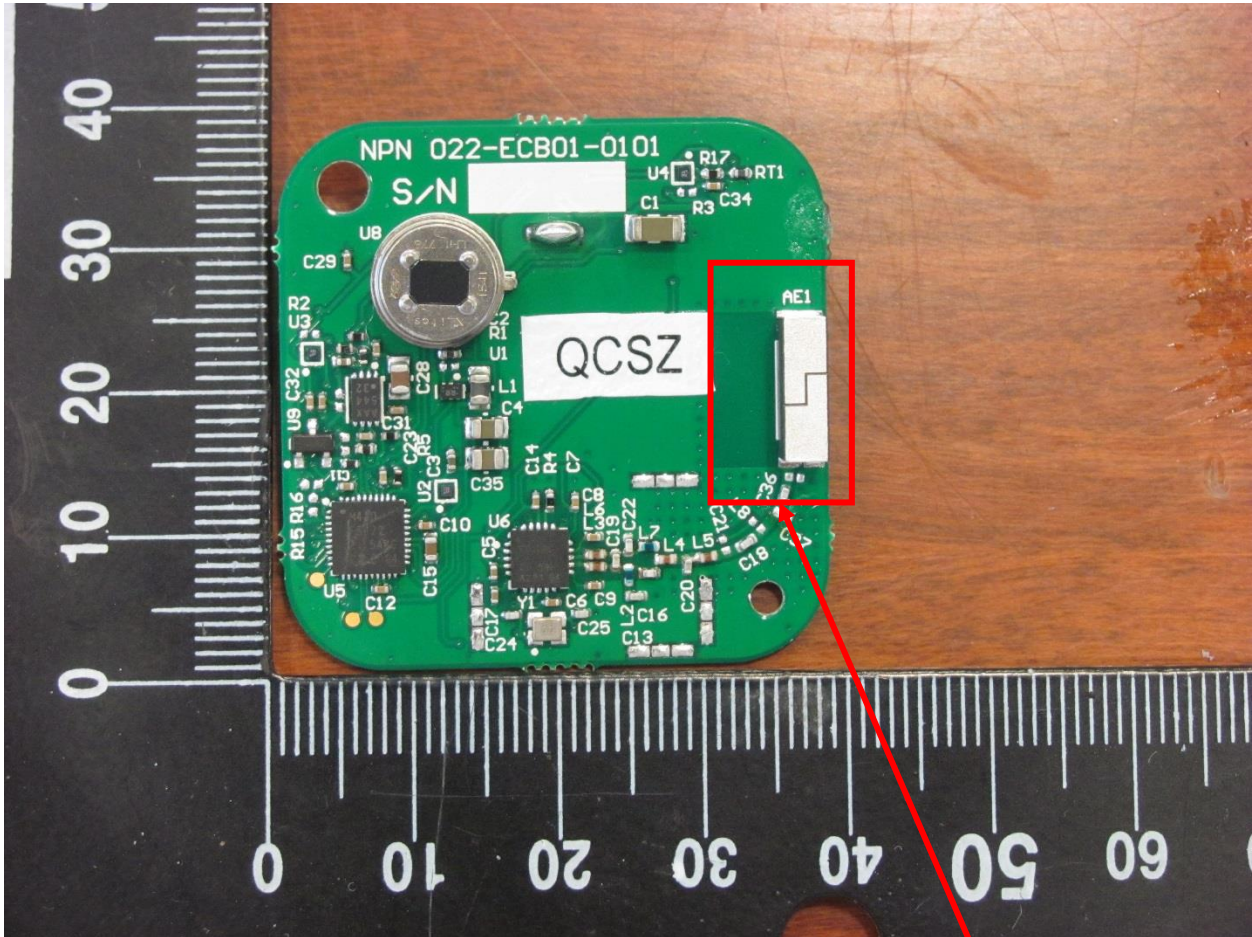


Illustration 3: EUT internal view, PCB top

900 MHz SMD Antenna