



MET Laboratories, Inc. *Safety Certification - EMI - Telecom Environmental Simulation*

914 WEST PATAPSCO AVENUE • BALTIMORE, MARYLAND 21230-3432 • PHONE (410) 354-3300 • FAX (410) 354-3313

33439 WESTERN AVENUE • UNION CITY, CALIFORNIA 94587 • PHONE (510) 489-6300 • FAX (510) 489-6372

3162 BELICK STREET • SANTA CLARA, CA 95054 • PHONE (408) 748-3585 • FAX (510) 489-6372

13301 MCCALLEN PASS • AUSTIN, TEXAS 78753 • PHONE (512) 287-2500 • FAX (512) 287-2513

Dosimetric Assessment Test Report

for the

Spirent Communications

**Tested and Evaluated In Accordance With
FCC OET 65 Supplement C: 01-01**

Prepared for

Spirent Communications
Jim Wasel
20324 Seneca Meadows parkway
Germantown, MD 20876

Engineering Statement: The measurements shown in this report were made in accordance with the procedures specified in Supplement C to OET Bulletin 65 of the Federal Communications Commission (FCC) Guidelines [FCC 2001] and Industry Canada RSS-102 for uncontrolled exposure. I assume full responsibility for the accuracy and completeness of these measurements, and for the qualifications of all persons taking them. It is further stated that upon the basis of the measurements made, the equipment evaluated is capable of compliance for localized specific absorption rate (SAR) for uncontrolled environment/general population exposure limits specified in ANSI/IEEE Std. C95.1-1999.

SAR Evaluation Certificate of Compliance

APPLICANT: Spirent

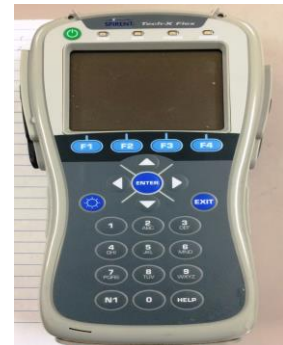
Applicant Name and Address: Spirent Communications
 Jim Wasel
 20324 Seneca Meadows parkway
 Germantown, MD 20876

Test Location: MET Laboratories, Inc.
 3162 Belick Street
 Santa Clara, CA 95054
 USA

EUT:	Tech-X Flex hand held tablet
Test Dates:	January 30th-February 10th, 2014
RF exposure environment:	Uncontrolled Exposure/General Population
RF exposure category:	Portable
Power supply:	Internal battery
Antenna:	Internal
Production/prototype:	Production
Modes Tested:	DSSS and OFDM
Duty Cycle:	100%
TX Range:	2412-2462 MHz 2437-2437 MHz
Max SAR Measured:	0.787 mW/g



Shawn McMillen



INTRODUCTION	4
SAR DEFINITION	4
DESCRIPTION OF DEVICE UNDER TEST (EUT)	5
SAR MEASUREMENT SYSTEM.....	6
MEASUREMENT SUMMARY	7
FLOW CHART OF THE RECOMMENDED PRACTICES AND PROCEDURES	9
DATA EVALUATION PROCEDURES	14
SIMULATED EQUIVALENT TISSUES	17
SAR SAFETY LIMITS	18
ROBOT SYSTEM SPECIFICATIONS	19
1.1. Specifications	19
1.2. Data Acquisition Electronic (DAE) System:	19
1.3. Phantom(s):	19
1.4. RX90BL Robot	20
1.5. Robot Controller.....	20
1.6. Light Beam Switch.....	20
1.7. Data Acquisition Electronics.....	20
1.8. Electro-Optical Converter (EOC).....	21
1.9. Measurement Server.....	21
1.10. Dosimetric Probe	21
1.11. SAM Phantom	21
1.12. Planar Phantom.....	21
1.13. Validation Planar Phantom.....	21
1.14. Device Holder.....	22
1.15. System Validation Kits.....	22
TEST EQUIPMENT LIST.....	23
MEASUREMENT UNCERTANTIES.....	24
REFERENCES	26
EUT TEST SETUP PHOTOS	27
APPENDIX A - SAR MEASUREMENT DATA.....	32
APPENDIX B - SYSTEM PERFORMANCE CHECK	33
APPENDIX C – PROBE CALIBRATION CERTIFICATE	34
APPENDIX D – DIPOLE CALIBRATION CERTIFICATE	35
APPENDIX E - MEASURED FLUID DIELECTRIC PARAMETERS	36
APPENDIX F – PHANTOM CERTIFICATE OF CONFORMITY	37
APPENDIX G - DAE CALIBRATION CERTIFICATE	38

INTRODUCTION

This measurement report demonstrates that Spirent Tech-X Flex hand-held tablet as described within this report complies with the Specific Absorption Rate (SAR) RF exposure requirements specified in ANSI/IEEE Std. C95.1-1999 and FCC 47 CFR §2.1093 for the Uncontrolled Exposure/General population environment. The test procedures described in FCC OET Bulletin 65, Supplement C, Edition 01-01 and IEEE 1528-2013 were employed.

A description of the device under test, device operating configuration and test conditions, measurement and site description, methodology and procedures used in the evaluation, equipment used, detailed summary of the test results and the various provisions of the rules are included in this dosimetric assessment test report.

SAR DEFINITION

Specific Absorption Rate (SAR) is defined as the time derivative (rate) of the incremental energy (dU) absorbed by (dissipated in) an incremental mass (dm) contained in a volume element (dV) of a given density (ρ). It is also defined as the rate of RF energy absorption per unit mass at a point in an absorbing body (see Fig. 1.1).

$$SAR = \frac{d}{dt} \left(\frac{dU}{dm} \right) = \frac{d}{dt} \left(\frac{dU}{\rho dv} \right)$$

Figure 1.1
SAR Mathematical Equation

SAR is expressed in units of Watts per Kilogram (W/kg).

$$SAR = \sigma E^2 / \rho$$

where:

σ - conductivity of the tissue - simulant material (S/m)

ρ - mass density of the tissue - simulant material (kg/m³)

E - Total RMS electric field strength (V/m)

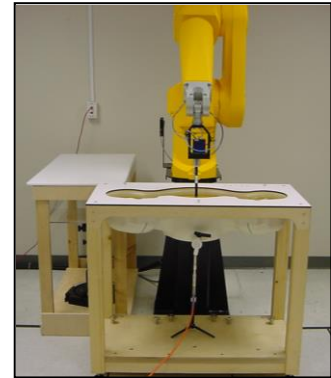
NOTE: The primary factors that control rate of energy absorption were found to be the wavelength of the incident field in relations to the dimensions and geometry of the irradiated organism, the orientation of the organism in relation to the polarity of field vectors, the presence of reflecting surfaces, and whether conductive contact is made by the organism with a ground plane.

DESCRIPTION OF DEVICE UNDER TEST (EUT)

Applicant:	Spirent
Description of Test Item:	Hand-held Tablet
Supply Voltage:	Internal Battery
Antenna Type(s) Tested:	Integral
Accessories:	none
Modes of Operation:	802.11 b/g/n
Duty Cycle Tested:	100%
Application Type:	Certification
Exposure Category:	Uncontrolled Exposure/General population
FCC and IC Rule Part(s):	FCC 47 CFR §2.1093
Standards:	IEEE Std. 1528-2013, FCC OET Bulletin 65, Supplement C, Edition 01-01

SAR MEASUREMENT SYSTEM

MET Laboratories, Inc SAR measurement facility utilizes the DASY4 Professional Dosimetric Assessment System (DASY[™]) manufactured by Schmid & Partner Engineering AG (SPEAG[™]) of Zurich, Switzerland for performing SAR compliance tests. The DASY4 measurement system is comprised of the measurement server, robot controller, computer, near-field probe, probe alignment sensor, specific anthropomorphic mannequin (SAM) phantom, and various planar phantoms for brain and/or body SAR evaluations. The robot is a six-axis industrial robot performing precise movements to position the probe to the location (points) of maximum electromagnetic field (EMF). The Cell controller system contain the power supply, robot controller, teach pendant (Joystick), and remote control, is used to drive the robot motors. The Staubli robot is connected to the cell controller to allow software manipulation of the robot. A data acquisition electronic (DAE) circuit performs the signal amplification, signal multiplexing, AD-conversion, offset measurements, mechanical surface detection, collision detection, etc. is connected to the Electro-optical coupler (EOC). The EOC performs the conversion from the optical into digital electric signal of the DAE and transfers data to the DASY4 measurement server. The DAE4 utilizes a highly sensitive electrometer-grade preamplifier with auto-zeroing, a channel and gain-switching multiplexer, a fast 16-bit AD-converter and a command decoder and control logic unit.



Transmission to the DASY4 measurement server is accomplished through an optical downlink for data and status information and an optical uplink for commands and clock lines. The mechanical probe-mounting device includes two different sensor systems for frontal and sidewise probe contacts. The sensor systems are also used for mechanical surface detection and probe collision detection. The robot uses its own controller with a built in VME-bus computer.

MEASUREMENT SUMMARY

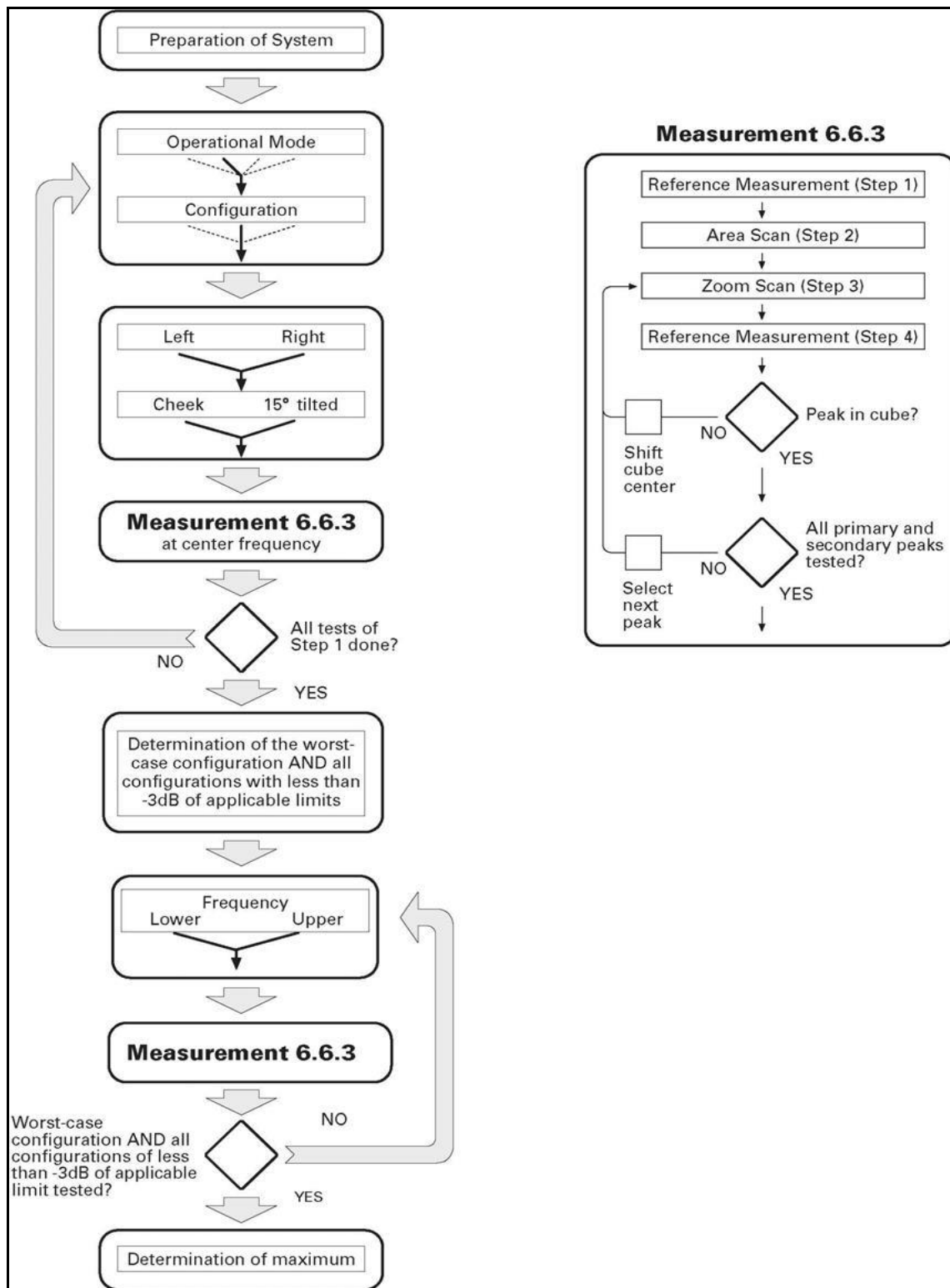
BODY SAR MEASUREMENT RESULTS								
Freq (MHz)	Ch	Test Mode	Cond. Pwr (dBm)	Battery Type	Phantom Section	Accessory	EUT Position and separation distance	Measured SAR 1g (mW/g)
2437	Mid	n-mode(20Mhz)	20.42	Li-ion	Planar	none	Back Side (0cm)	0.045
2437	Mid	n-mode(40Mhz)	20.42	Li-ion	Planar	none	Back Side (0cm)	0.044
2437	Mid	n-mode(20Mhz)	20.42	Li-ion	Planar	none	Face Side (0cm)	0.559
2437	Mid	n-mode(40Mhz)	20.42	Li-ion	Planar	none	Face Side (0cm)	0.586
2437	Mid	n-mode(20Mhz)	20.42	Li-ion	Planar	none	Right Edge (0cm)	0.764
2437	Mid	n-mode(40Mhz)	20.42	Li-ion	Planar	none	Right Edge (0cm)	0.787
2437	Mid	n-mode(20Mhz)	20.42	Li-ion	Planar	none	Top Edge (0cm)	0.644
2437	Mid	n-mode(40Mhz)	20.42	Li-ion	Planar	none	Top Edge (0cm)	0.697
2437	Mid	g-mode	18.95	Li-ion	Planar	none	Back Side (0cm)	0.0175
2437	Mid	g-mode	18.95	Li-ion	Planar	none	Face Side (0cm)	0.170
2437	Mid	g-mode	18.95	Li-ion	Planar	none	Right Edge (0cm)	0.213
2437	Mid	g-mode	18.95	Li-ion	Planar	none	Top Edge (0cm)	0.147
2437	Mid	b-mode	16.78	Li-ion	Planar	none	Back Side (0cm)	0.00849
2437	Mid	b-mode	16.78	Li-ion	Planar	none	Face Side (0cm)	0.064
2437	Mid	b-mode	16.78	Li-ion	Planar	none	Right Edge (0cm)	0.169
2437	Mid	b-mode	16.78	Li-ion	Planar	none	Top Edge (0cm)	0.156
ANSI/IEEE C95.1 1992 – SAFETY LIMIT 1.6 W/kg (averaged over 1 gram) Spatial Peak – General Population/Uncontrolled								
Measured Mixture Type			2450 MHz Body		Test Dates			1/30/2014 2/10/2014
Dielectric Constant ϵ_r			IEEE Target	Measured	Duty Cycle			100%
			52.7	51.25	Ambient Temperature (C)			23
Conductivity σ (mho/m)			IEEE Target	Measured	Fluid Temperature (C)			22
			1.95	2.01	Fluid Depth			≥ 15 cm

DETAILS OF SAR EVALUATION

The Spirent Tech-X Flex hand-held tablet was determined to be compliant for localized Specific Absorption Rate based on the test provisions and conditions described below.

1. The Tech-X Flex hand-held tablet contains a pre-approved module FCC ID: RYK-WUBR507N
2. The EUT was tested for SAR against the planar section of the phantom in three different orientations. The front and back sides as well as the top and side edge were placed at 0.0cm separation from the phantom surface.
3. The EUT was placed into Test Mode at maximum duty cycle transmissions using software commands provided by Spirent. Mid channel was tested in b/g and n modes and for both 20 and 40 Mhz Bandwidth.
4. All SAR evaluations were performed with a fully charged battery.
5. There was no external method of measuring the RF output power before and after the SAR tests. The power drift measurement routine of the SAR system was used to determine if the power of the EUT stayed within the allowable limits.
6. The dielectric parameters of the simulated head and body fluid were measured prior to the evaluation using an 85070D Dielectric Probe Kit and an 8722D Network Analyzer.
7. The fluid and air temperature was measured prior to and after each SAR evaluation to ensure the temperature remained within ± 2 deg C of the temperature of the fluid when the dielectric properties were measured.
8. During the SAR evaluations if a distribution produced several hotspots over the course of the area scan, each hotspot was evaluated separately.

FLOW CHART OF THE RECOMMENDED PRACTICES AND PROCEDURES



EAR Reference Point

Figure 12.1 shows the front, back and side views of the SAM Twin Phantom. The point M is the reference point for the center of the mouth, LE is the left ear reference point (ERP), and RE is the right ERP. The ERPs are 15mm posterior to the entrance to the ear canal (EEC) along the B-M line (Back-Mouth), as shown in Figure 12.2. The plane passing through the two ear canals and M is defined as the Reference Plane. The line N-F (Neck-Front) is perpendicular to the reference plane and passing through the RE (or LE) is called the Reference Pivoting. Line B-M is perpendicular to the N-F line. Both N-F and B-M lines are marked on the external phantom shell to facilitate handset positioning.

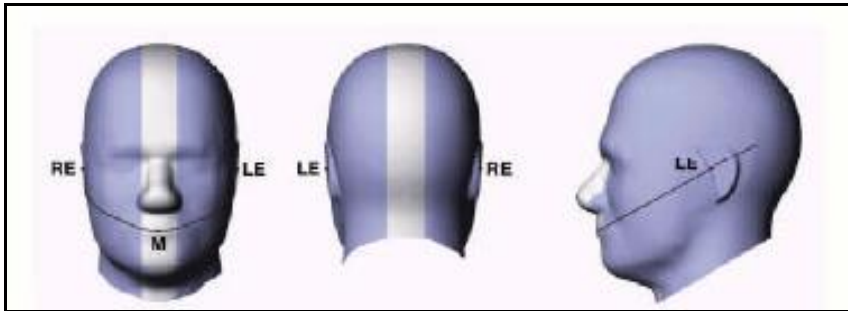


Figure 12.1
Front, back and side view of SAM Twin Phantom

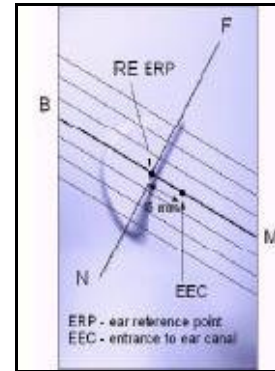


Figure 12.2
Side view of ERPs

HANDSET REFERENCE POINTS

Two imaginary lines on the handset were established: the vertical centerline and the horizontal line. The test device was placed in a normal operating position with the test device reference point located along the vertical centerline on the front of the device aligned to the ear reference point (See Fig. 12.3). The test device reference point was then located at the same level as the center of the ear reference point. The test device was positioned so that the vertical centerline was bisecting the front surface of the handset at its top and bottom edges, positioning the ear reference point on the outer surface of the both the left and right head phantoms on the ear reference point.

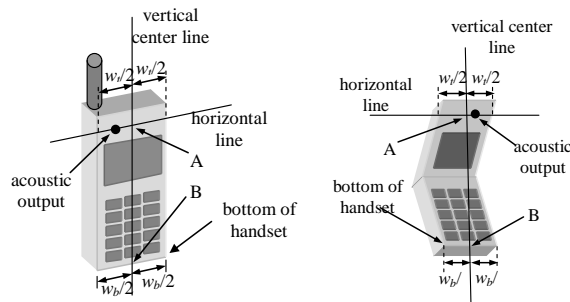


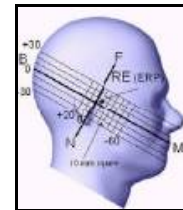
Figure 12.3
Handset Vertical Center & Horizontal Line Reference Points

POSITIONING FOR CHEEK/TOUCH

1. The test device was positioned with the handset close to the surface of the phantom such that point A is on the (virtual) extension of the line passing through points RE and LE on the phantom, such that the plane defined by the vertical center line and the horizontal line of the phone is approximately parallel to the sagittal plane of the phantom.
2. The handset was translated towards the phantom along the line passing through RE & LE until the handset touches the ear.
3. While maintaining the handset in this plane, the handset was rotated around the LE-RE line until the vertical centerline was in the plane normal to MB-NF including the line MB (reference plane).
4. The phone was then rotated around the vertical centerline until the phone (horizontal line) was symmetrical with respect to the line NF.
5. While maintaining the vertical centerline in the reference plane, keeping point A on the line passing through RE and LE, and maintaining the phone contact with the ear, the handset was rotated about the line NF until any point on the handset made contact with a phantom point below the ear (cheek). See Figure 12.5)



Front, Side and Top View of Cheek/Touch Position

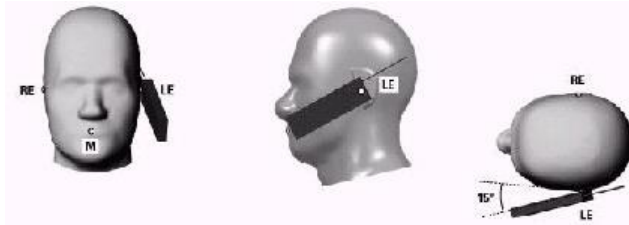


Side view with relevant markings

POSITIONING FOR EAR/15 DEGREE TILE

With the test device aligned in the Cheek/Touch Position:

1. While maintaining the orientation of the phone, the phone was retracted parallel to the reference plane far enough to enable a rotation of the phone by 15 degree.
2. The phone was then rotated around the horizontal line by 15 degree.
3. While maintaining the orientation of the phone, the phone was moved parallel to the reference plane until any part of the phone touches the head. (In this position, point A was located on the line RE-LE). The tilted position is obtained when the contact is on the pinna. If the contact was at any location other than the pinna, the angle of the phone would then be reduced. The tilted position was obtained when any part of the phone was in contact of the ear as well as a second part of the phone was in contact with the head.



Front, Side and Top View of Ear/15 Tilt Position

Body Worn Configurations

The body-worn configurations shall be tested with the supplied accessories (belt-clips, holsters, etc.) attached to the device in normal use configuration.

For body-worn and other configurations a flat phantom shall be used which is comprised of material with electrical properties similar to the corresponding tissues.

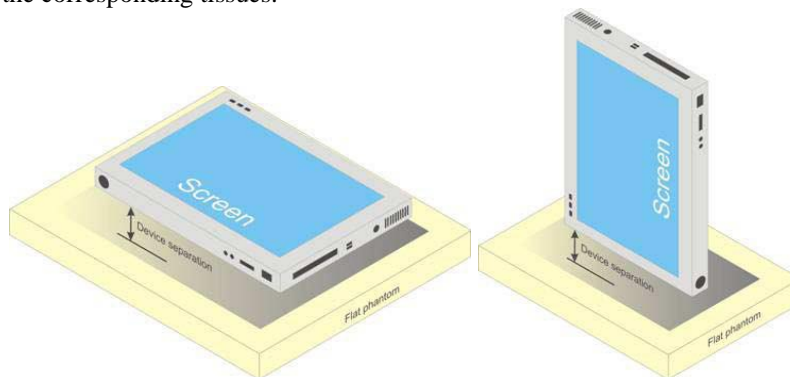


Illustration for Body Worn Positions

EVALUATION PROCEDURES

The evaluation was performed in the applicable area of the phantom depending on the type of device being tested.

- (i) For devices held to the ear during normal operation, both the left and right ear positions were evaluated using the SAM phantom.
- (ii) For body-worn and face-held devices a planar phantom was used.

The SAR was determined by a pre-defined procedure within the DASY4 software. Upon completion of a reference check, the exposed region of the phantom was scanned near the inner surface with a grid spacing of 15mm x 15mm.

An area scan was determined as follows:

Based on the defined area scan grid, a more detailed grid is created to increase the points by a factor of 10. The interpolation function then evaluates all field values between corresponding measurement points.

A linear search is applied to find all the candidate maxima. Subsequently, all maxima are removed that are >2 dB from the global maximum. The remaining maxima are then used to position the cube scans.

A 1g and 10g spatial peak SAR was determined as follows:

For frequencies $\leq 4.5\text{GHz}$ a 32mm x 32mm x 34mm (7x7x7 data points) zoom scan was assessed at the position where the greatest V/m was detected. For frequencies $\geq 4.5\text{GHz}$ a 28mm x 28mm x 24mm (7x7x9 data points) zoom scan was assessed at the position where the greatest V/m was detected. The data at the surface was extrapolated since the distance from the probes sensors to the surface is 3.9cm. A least squares fourth-order polynomial was used to generate points between the probe detector and the inner surface of the phantom.

Interpolated data is used to calculate the average SAR over 1g and 10g cubes by spatially discretizing the entire measured cube. The volume used to determine the averaged SAR is a 1mm grid (42875 interpolated points).

Z-Scan was determined as follows:

The Z-scan measures points along a vertical straight line. The line runs along a line normal to the inner surface of the phantom surface.

DATA EVALUATION PROCEDURES

The DASY4 post processing software (SEMCAD) automatically executes the following procedures to calculate the field units from the microvolt readings at the probe connector. The parameters used in the evaluation are stored in the configuration modules of the software:

Probe Parameters:	<ul style="list-style-type: none"> - Sensitivity - Conversion Factor - Dipole Compression Point 	<ul style="list-style-type: none"> $Norm_i, a_{i0}, a_{i1}, a_{i2}$ $ConvF_i$ dcp_i
Device parameters:	<ul style="list-style-type: none"> - Frequency - Crest factor 	<ul style="list-style-type: none"> f cf
Media parameters:	<ul style="list-style-type: none"> - Conductivity - Density 	<ul style="list-style-type: none"> σ ρ

These parameters must be set correctly in the software. They can be found in the component documents or can be imported into the software from the configuration files issued for the DASY components. In the direct measuring mode of the multimeter option, the parameters of the actual system setup are used. In the scan visualization and export modes, the parameters stored in the corresponding document files are used. The first step of the evaluation is a linearization of the filtered input signal to account for the compression characteristics of the detector diode. The compensation depends on the input signal, the diode type and the DC - transmission factor from the diode to the evaluation electronics. If the exciting field is pulsed, the crest factor of the signal must be known to correctly compensate for peak power. The formula for each channel can be given as:

$$V_i = U_i + U_i^2 \cdot \frac{cf}{dcp_i}$$

With V_i = Compensated signal of channel i (i = x, y, z)
 U_i = Input signal of channel i (i = x, y, z)
 cf = Crest factor of exciting field (DASY parameter)
 dcp_i = Diode compression point (DASY parameter)

From the compensated input signals the primary field data for each channel can be evaluated:

$$\text{E - fieldprobes : } E_i = \sqrt{\frac{V_i}{Norm_i \cdot ConvF}}$$

$$\text{H - fieldprobes : } H_i = \sqrt{V_i} \cdot \frac{a_{i0} + a_{i1}f + a_{i2}f^2}{f}$$

with V_i = Compensated signal of channel i (i = x, y, z)
 $Norm_i$ = Sensor sensitivity of channel i (i = x, y, z)
 $\mu\text{V}/(\text{V/m})^2$ for E-field probes
 $ConvF$ = Sensitivity enhancement in solution
 a_{ij} = Sensor sensitivity factors for H-field probes
 f = Carrier frequency (GHz)
 E_i = Electric field strength of channel i in V/m
 H_i = Magnetic field strength of channel i in A/m

The RSS value of the field components gives the total field strength (Hermitian magnitude):

$$E_{tot} = \sqrt{E_x^2 + E_y^2 + E_z^2}$$

The primary field data are used to calculate the derived field units.

$$SAR = E_{tot}^2 \cdot \frac{\sigma}{\rho \cdot 1'000}$$

with SAR = local specific absorption rate in mW/g

E_{tot} = total field strength in V/m

σ = conductivity in [mho/m] or [Siemens/m]

ρ = equivalent tissue density in g/cm³

Note that the density is normally set to 1 (or 1.06), to account for actual brain density rather than the density of the simulation liquid.

The power flow density is calculated assuming the excitation field as a free space field.

$$P_{pwe} = \frac{E_{tot}^2}{3770} \quad \text{or} \quad P_{pwe} = H_{tot}^2 \cdot 37.7$$

with P_{pwe} = Equivalent power density of a plane wave in mW/cm²

E_{tot} = total electric field strength in V/m

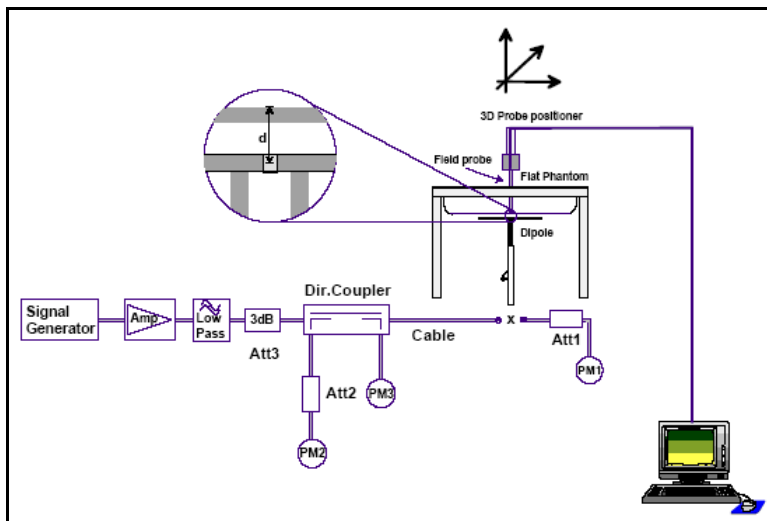
H_{tot} = total magnetic field strength in A/m

SYSTEM PERFORMANCE CHECK

Prior to the SAR evaluation a system check was performed in the planar section of the SAM phantom with an 2450MHz dipole. The dielectric parameters of the simulated brain fluid were measured prior to the system performance check using an 85070D Dielectric Probe Kit and an 8722D Network Analyzer. A forward power of 250mW was applied to the dipole and the system was verified to a tolerance of +10%. All results were normalized to 1W.

Test Date	Fluid Type (MHz)	SAR 1g (W/kg)		Permittivity Constant ϵ_r		Conductivity σ (mho/m)		Ambient Temp. (C)	Fluid Temp. (C)	Fluid Depth (cm)
		Calibrated Target	Measure d	IEEE Target	Measure d	IEEE Target	Measured			
2/07/2014	2450 body	13.0 \pm 5%	12.9	52.7 \pm 5%	51.3	1.95 \pm 10%	2.01	23.0	22.0	\geq 15

Note: The ambient and fluid temperatures were measured prior to the fluid parameter check and the system performance check. The temperatures listed in the table above were consistent for all measurement periods.



SIMULATED EQUIVALENT TISSUES

Simulated Tissue Mixture	
Ingredient	2450MHz Body (EUT testing)
Water	68.64%
DGBE	31.37%

SAR SAFETY LIMITS

EXPOSURE LIMITS	SAR (W/kg)	
	(General Population / Uncontrolled Exposure Environment)	(Occupational / Controlled Exposure Environment)
Spatial Average (averaged over the whole body)	0.08	0.4
Spatial Peak (averaged over any 1g of tissue)	1.60	8.0
Spatial Peak (hands/wrists/feet/ankles averaged over 10g)	4.0	20.0

Notes:

1. Uncontrolled exposure environments are locations where there is potential exposure of individuals who have no knowledge or control of their potential exposure.
2. Controlled exposure environments are locations where there is potential exposure of individuals who have knowledge of their potential exposure and can exercise control over their exposure.

ROBOT SYSTEM SPECIFICATIONS

1.1. SPECIFICATIONS

Positioner:

Robot:	Staubli Unimation Corp. Robot Model: RX90
Repeatability:	0.02 mm
No. of axis:	6

1.2. DATA ACQUISITION ELECTRONIC (DAE) SYSTEM:

Cell Controller

Processor:	Compaq Evo Clock Speed:2.4 GHz Operating System: Windows XP Professional
------------	--

Data Converter

Features:	Signal Amplifier, multiplexer, A/D converter, and control logic
Software:	DASY4 software
Connecting Lines:	Optical downlink for data and status info. Optical uplink for commands and clock

Dasy4 Measurement Server

Function:	Real-time data evaluation for field measurements and surface detection
Hardware:	PC/104 166MHz Pentium CPU; 32 MB chipdisk; 64 MB RAM
Connections:	COM1, COM2, DAE, Robot, Ethernet, Service Interface

E-Field Probe

Model:	ET3DV6
Serial No.:	1793
Construction:	Triangular core fiber optic detection system
Frequency:	10 MHz to 6 GHz
Linearity:	± 0.2 dB (30 MHz to 3 GHz)

EX-Probe

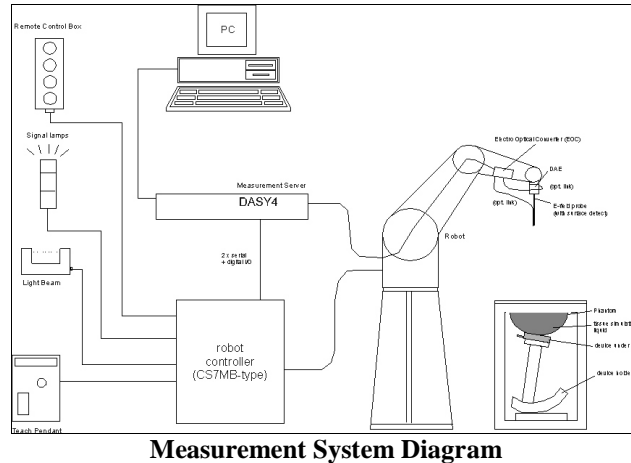
Model:	EX3DV4
Serial No.	3511
Construction:	Triangular core
Frequency:	10 MHz to > 6 GHz
Linearity:	± 0.2 dB (30 MHz to 3 GHz)

1.3. PHANTOM(S):

Validation & Evaluation Phantom

Type:	SAM V4.0C
Shell Material:	Fiberglass
Thickness:	2.0 \pm 0.1 mm
Volume:	Approx. 20 liters

SAR Measurement System



1.4. RX90BL ROBOT

The Stäubli RX90BL Robot is a standard high precision 6-axis robot with an arm extension for accommodating the data acquisition electronics (DAE).

1.5. ROBOT CONTROLLER

The CS7MB Robot Controller system drives the robot motors. The system consists of a power supply, robot controller, and remote control with teach pendant and additional circuitry for robot safety such as warning lamps, etc.

1.6. LIGHT BEAM SWITCH

The Light Beam Switch (Probe alignment tool) allows automatic “tooling” of the probe. During the process, the actual position of the probe tip with respect to the robot arm is measured as well as the probe length and the horizontal probe offset. The software then corrects all movements, so that the robot coordinates are valid for the probe tip. The repeatability of this process is better than 0.1 mm. If a position has been taught with an aligned probe, the same position will be reached with another aligned probe within 0.1 mm, even if the other probe has different dimensions. During probe rotations, the probe tip will keep its actual position.



1.7. DATA ACQUISITION ELECTRONICS

The Data Acquisition Electronics consists of a highly sensitive electrometer grade preamplifier with auto-zeroing, a channel and gain switching multiplexer, a fast 16-bit A/D converter and a command decoder and control logic unit. Some of the task the DAE performs is signal amplification, signal multiplexing, A/D conversion, and offset measurements. The DAE also contains the mechanical probe-mounting device, which contains two different sensor systems for frontal and sideways probe contacts used for probe collision detection and mechanical surface detection for controlling the distance between the probe and the inner surface of the phantom shell. Transmission from the DAE to the measurement server, via the EOC, is through an optical downlink for data and status information as well as an optical uplink for commands and the clock.



1.8. ELECTO-OPTICAL CONVERTER (EOC)

The Electro-Optical Converter performs the conversion between the optical and electrical of the signals for the digital communication to the DAE and for the analog signal from the optical surface detection. The EOC connects to, and transfers data to, the DASY4 measurement server. The EOC also contains the fiber optical surface detection system for controlling the distance between the probe and the inner surface of the phantom shell.



1.9. MEASUREMENT SERVER

The Measurement Server performs time critical tasks such as signal filtering, all real-time data evaluation for field measurements and surface detection, controls robot movements, and handles safety operation. The PC-operating system cannot interfere with these time critical processes. A watchdog supervises all connections, and disconnection of any of the cables to the measurement server will automatically disarm the robot and disable all program-controlled robot movements.



1.10. DOSIMETRIC PROBE

Dosimetric Probe is a symmetrical design with triangular core that incorporates three 3 mm long dipoles arranged so that the overall response is close to isotropic. The probe sensors are covered by an outer protective shell, which is resistant to organic solvents i.e. glycol. The probe is equipped with an optical multi-fiber line, ending at the front of the probe tip, for optical surface detection. This line connects to the EOC box on the robot arm and provides automatic detection of the phantom surface. The optical surface detection works in transparent liquids and on diffuse reflecting surfaces with a repeatability of better than $\pm 0.1\text{mm}$.



1.11. SAM PHANTOM

The SAM (Specific Anthropomorphic Mannequin) twin phantom is a fiberglass shell phantom with 2mm shell thickness (except the ear region where shell thickness increases to 6mm) integrated into a wooden table. The shape of the shell corresponds to the phantom defined by SCC34-SC2. It enables the dosimetric evaluation of left hand, right hand phone usage as well as body mounted usage at the flat phantom region. The flat section is also used for system validation and the length and width of the flat section are at least $0.75 \lambda_0$ and $0.6 \lambda_0$ respectively at frequencies of 824 MHz and above (λ_0 = wavelength in air).

Reference markings on the phantom top allow the complete setup of all predefined phantom positions and measurement grids by manually teaching three points in the robot. A white cover is provided to cover the phantom during off-periods preventing water evaporation and changes in the liquid parameters. Free space scans of devices on the cover are possible. The phantom is filled with a tissue simulating liquid to a depth of at least 15 cm at each ear reference point. The bottom plate of the wooden table contains three pair of bolts for locking the device holder.

1.12. PLANAR PHANTOM

The planar phantom is constructed of Plexiglas material with a 2.0 mm shell thickness for face-held and body-worn SAR evaluations of handheld radio transceivers. The planar phantom is mounted on the wooden table of the DASY4 system.

1.13. VALIDATION PLANAR PHANTOM

The validation planar phantom is constructed of Plexiglas material with a 6.0 mm shell thickness for system validations at 450MHz and below. The validation planar phantom is mounted on the wooden table of the DASY4 system.



1.14. DEVICE HOLDER

The device holder is designed to cope with the different measurement positions in the three sections of the SAM phantom given in the standard. It has two scales, one for device rotation (with respect to the body axis) and one for device inclination (with respect to the line between the ear openings). The rotation center for both scales is the ear opening, thus the device needs no repositioning when changing the angles. The plane between the ear openings and the mouth tip has a rotation angle of 65° .



The DASY device holder has been made out of low-loss POM material having the following dielectric parameters: relative permittivity $\epsilon = 3$ and loss tangent $\delta = 0.02$. The amount of dielectric material has been reduced in the closest vicinity of the device, since measurements have suggested that the influence of the clamp on the test results could thus be lowered.

The dielectric properties of the liquid conform to all the tabulated values [2-5]. Liquids are prepared according to Annex A and dielectric properties are measured according to Annex B.

1.15. SYSTEM VALIDATION KITS

Power Capability: $> 100 \text{ W}$ ($f < 1\text{GHz}$); $> 40 \text{ W}$ ($f > 1\text{GHz}$)

Construction: Symmetrical dipole with 1/4 balun Enables measurement of feed point impedance with NWA Matched for use near flat phantoms filled with brain simulating solutions Includes distance holder and tripod adaptor.

Frequency: 300, 450, 835, 1900, 2450 MHz, 5-6GHz

Return loss: $>20 \text{ dB}$ at specified validation position

Dimensions:

300 MHz Dipole:	Length: 396mm; Overall Height:430 mm; Diameter: 6 mm
450 MHz Dipole:	Length: 270 mm; Overall Height: 347 mm; Diameter: 6 mm
835 MHz Dipole:	Length: 161 mm; Overall Height: 270 mm; Diameter: 3.6 mm
1900 MHz Dipole:	Length: 68 mm; Overall Height: 219 mm; Diameter: 3.6 mm
2450 MHz Dipole:	Length: 51.5 mm; Overall Height: 300 mm; Diameter: 3.6 mm
5-6GHz Dipole:	Length: 26.0 mm; Overall Height: 170 mm; Diameter: 3.6 mm



TEST EQUIPMENT LIST

Test Equipment	Serial Number	Calibration Date
DASY4 System Robot RX90	FO3/SX19A1/A/01	N/A
EX3DV4	3722	July 29, 2013
DAE	584	July 18, 2013
2450MHz Dipole	857	July 22, 2013
SAM Phantom V4.0C	N/A	N/A
SMB100A Signal Generator	RENTAL	12/4/13
EMCO Horn Antenna	1S2208	1/23/2013
Agilent E4407B Spectrum Analyzer	1S2607	8/29/2013
Agilent 8722D Network Analyzer	1S2272	7/12/2012
Extech Power Supply (30 VDC)	4S3771	N/A
Mini-Circuits power amplifier	1S2447	N/A

MEASUREMENT UNCERTAINTIES

UNCERTAINTY ASSESSMENT 300MHz-3GHz

Error Description	Tol. ±%	Prob. Dist.	Div.	c_i 1g	c_i 10g	Std Unc ±% (1g)	Std Unc ±% (10g)	v_i or v_{eff}
Measurement System								
Probe calibration	4.8	N	1	1	1	4.8	4.8	N/A
Axial isotropy of the probe	4.7	R	$\sqrt{3}$	0.7	0.7	1.9	1.9	N/A
Spherical isotropy of the probe	9.6	R	$\sqrt{3}$	0.7	0.7	3.9	3.9	N/A
Boundary effects	1.0	R	$\sqrt{3}$	1	1	4.8	4.8	N/A
Probe linearity	4.7	R	$\sqrt{3}$	1	1	2.7	2.7	N/A
Detection limit	1.0	R	$\sqrt{3}$	1	1	0.6	0.6	N/A
Readout electronics	1.0	N	1	1	1	1.0	1.0	N/A
Response time	0.8	R	$\sqrt{3}$	1	1	0.5	0.5	N/A
Integration time	2.6	R	$\sqrt{3}$	1	1	0.8	0.8	N/A
RF ambient conditions	3.0	R	$\sqrt{3}$	1	1	0.43	0.43	N/A
Mech. constraints of robot	0.4	R	$\sqrt{3}$	1	1	0.2	0.2	N/A
Probe positioning	2.9	R	$\sqrt{3}$	1	1	1.7	1.7	N/A
Extrapolation & integration	1.0	R	$\sqrt{3}$	1	1	2.3	2.3	N/A
Test Sample Related								
Device positioning	2.9	N	1	1	1	2.23	2.23	145
Device holder uncertainty	3.6	N	1	1	1	5.0	5.0	5
Power drift	5.0	R	$\sqrt{3}$			2.9	2.9	N/A
Phantom and Setup								
Phantom uncertainty	4.0	R	$\sqrt{3}$	1	1	2.3	2.3	N/A
Liquid conductivity (target)	5.0	R	$\sqrt{3}$	0.64	0.43	1.8	1.2	N/A
Liquid conductivity (measured)	2.5	N	1	0.64	0.43	1.6	1.1	N/A
Liquid permittivity (target)	5.0	R	$\sqrt{3}$	0.6	0.5	1.7	1.4	N/A
Liquid permittivity (measured)	2.5	N	1	0.6	0.5	1.5	1.2	N/A
Combined Standard Uncertainty (k=1)		RSS				10.3	10.0	
Expanded Uncertainty (k=2) 95% Confidence Level						20.6	20.1	

Table 1. Worst-case uncertainty for DASY4 assessed according to IEEE P1528.

The budget is valid for the frequency range 300MHz to 3GHz and represents a worst-case analysis.

UNCERTAINTY FOR SYSTEM PERFORMANCE CHECK

Error Description	Tol. ±%	Prob. Dist.	Div.	c_i 1g	c_i 10g	Std Unc ±% (1g)	Std Unc ±% (10g)	v_i or v_{eff}
Measurement System								
Probe calibration	5.9	N	1	1	1	5.9	5.9	∞
Axial Isotropy	4.7	R	√3	1	1	2.7	2.7	∞
Hemispherical Isotropy	9.6	R	√3	0	0	0	0	∞
Boundary effects	1.0	R	√3	1	1	0.6	0.6	∞
Linearity	4.7	R	√3	1	1	2.7	2.7	∞
System Detection limit	1.0	R	√3	1	1	0.6	0.6	∞
Readout electronics	0.3	N	1	1	1	0.3	0.3	∞
Response time	0	R	√3	1	1	0	0	∞
Integration time	0	R	√3	1	1	0	0	∞
RF Ambient Noise	3.0	R	√3	1	1	1.7	1.7	∞
RF Ambient Reflections	3.0	R	√3	1	1	1.7	1.7	∞
Probe Positioner	0.4	R	√3	1	1	0.2	0.2	∞
Probe positioning	2.9	R	√3	1	1	1.7	1.7	∞
Algorithms for Max. SAR Eval.	1.0	R	√3	1	1	0.6	0.6	∞
Dipole								
Dipole Axis to Liquid Distance	2.0	R	√3	1	1	1.2	1.2	∞
Input power and SAR drift meas.	4.7	R	√3	1	1	2.7	2.7	∞
Phantom and Tissue Parameters								
Phantom uncertainty	4.0	R	√3	1	1	2.3	2.3	∞
Liquid conductivity (target)	5.0	R	√3	0.64	0.43	1.8	1.2	∞
Liquid conductivity (measured)	2.5	N	1	0.64	0.43	1.6	1.1	∞
Liquid permittivity (target)	5.0	R	√3	0.6	0.5	1.7	1.4	∞
Liquid permittivity (measured)	2.5	N	1	0.6	0.5	1.5	1.2	∞
Combined Standard Uncertainty						9.2	8.9	
Coverage Factor for 95%		kp=2						
Expanded Uncertainty						18.4	17.8	

Table 2. Uncertainty of a system performance check with DASY4 system

The budget is valid for the frequency range 300MHz to 3GHz and represents a worst-case analysis.

REFERENCES

- [1] Federal Communications Commission, ET Docket 93-62, Guidelines for Evaluating the Environmental Effects of Radiofrequency Radiation, Aug. 1996.
- [2] ANSI/IEEE C95.1 - 1991, American National Standard safety levels with respect to human exposure to radio frequency electromagnetic fields, 300kHz to 100GHz, New York: IEEE, Aug. 1992.
- [3] ANSI/IEEE C95.3 - 1991, IEEE Recommended Practice for the Measurement of Potentially Hazardous Electromagnetic Fields - RF and Microwave, New York: IEEE, 1992.
- [4] Federal Communications Commission, OET Bulletin 65 (Edition 97-01), Supplement C (Edition 01-01), Evaluating Compliance with FCC Guidelines for Human Exposure to Radiofrequency Electromagnetic Fields, July 2001.
- [5] IEEE Standards Coordinating Committee 34, IEEE 1528 (August 2003), Recommended Practice for Determining the Peak Spatial-Average Specific Absorption Rate (SAR) in the Human Body Due to Wireless Communications Devices.
- [6] NCRP, National Council on Radiation Protection and Measurements, Biological Effects and Exposure Criteria for Radio Frequency Electromagnetic Fields, NCRP Report No. 86, 1986. Reprinted Feb.1995.
- [7] T. Schmid, O. Egger, N. Kuster, Automated E-field scanning system for dosimetric assessments, IEEE Transaction on Microwave Theory and Techniques, vol. 44, Jan. 1996, pp. 105-113.
- [8] K. Pokovic, T. Schmid, N. Kuster, Robust setup for precise calibration of E-field probes in tissue simulating liquids at mobile communications frequencies, ICECOM97, Oct. 1997, pp. 120-124.
- [9] K. Pokovic, T. Schmid, and N. Kuster, E-field Probe with improved isotropy in brain simulating liquids, Proceedings of the ELMAR, Zadar, Croatia, June 23-25, 1996, pp. 172-175.
- [10] Schmid & Partner Engineering AG, Application Note: Data Storage and Evaluation, June 1998, p2.
- [11] V. Hombach, K. Meier, M. Burkhardt, E. Kuhn, N. Kuster, The Dependence of EM Energy Absorption upon Human Head Modeling at 900 MHz , IEEE Transaction on Microwave Theory and Techniques, vol. 44 no. 10, Oct. 1996, pp. 1865-1873.
- [12] N. Kuster and Q. Balzano, Energy absorption mechanism by biological bodies in the near field of dipole antennas above 300MHz , IEEE Transaction on Vehicular Technology, vol. 41, no. 1, Feb. 1992, pp. 17-23.
- [13] G. Hartsgrove, A. Kraszewski, A. Surowiec, Simulated Biological Materials for Electromagnetic Radiation Absorption Studies, University of Ottawa, Bioelectromagnetics, Canada: 1987, pp. 29-36.
- [14] Q. Balzano, O. Garay, T. Manning Jr., Electromagnetic Energy Exposure of Simulated Users of Portable Cellular Telephones, IEEE Transactions on Vehicular Technology, vol. 44, no.3, Aug. 1995.
- [15] W. Gander, Computermathematick, Birkhaeuser, Basel, 1992.
- [16] W.H. Press, S.A. Teukolsky, W.T. Vetterling, and B.P. Flannery, Numerical Receptions in C, The Art of Scientific Computing, Second edition, Cambridge University Press, 1992.
- [17] N. Kuster, R. Kastle, T. Schmid, Dosimetric Evaluation Of Mobile Communications Equipment With Known Precision, IEEE Transaction on Communications, vol. E80-B, no. 5, May 1997, pp. 645-652.
- [18] CENELEC CLC/SC111B, European Prestandard (prENV 50166-2), Human Exposure to Electromagnetic Fields High-frequency: 10kHz - 300GHz, Jan. 1995.
- [19] Prof. Dr. Niels Kuster, ETH, Eidgen ssische Technische Hochschule Z rich, Dosimetric Evaluation of the Cellular Phone.
- [20] Federal Communications Commission, Radiofrequency radiation exposure evaluation: portable devices, Rule Part 47 CFR 2.1093: 1999.
- [21] Health Canada, Limits of Human Exposure to Radiofrequency Electromagnetic Fields in the Frequency Range from 3 kHz to 300 GHz , Safety Code 6.
- [22] Industry Canada, Evaluation Procedure for Mobile and Portable Radio Transmitters with respect to Health Canada's Safety Code 6 for Exposure of Humans to Radio Frequency Fields, Radio Standards Specification RSS-102 Issue 1 (Provisional): September 1999.

EUT TEST SETUP PHOTOS



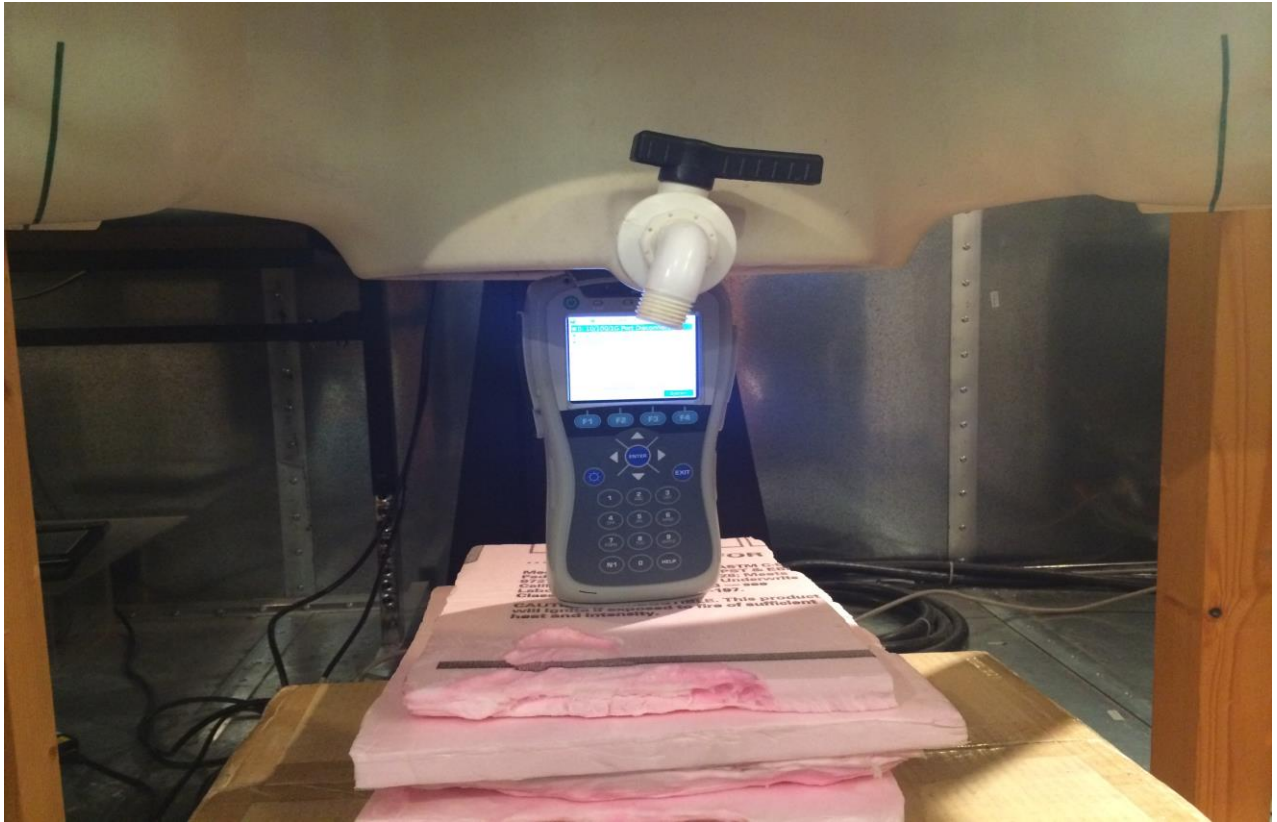
Photograph 1. EUT Right Edge/Antenna, Side against Phantom



Photograph 2. EUT with Face of EUT against Phantom



Photograph 3. EUT with Back of EUT against Phantom



Photograph 4. Top Edge Antenna against the phantom



Photograph 5. Fluid Depth



APPENDIX A - SAR MEASUREMENT DATA

n-mode back 20Mhz

Date/Time: 2/5/2014 1:29:43 PM

DUT: Spirent;

Communication System: DTS ; ; Frequency: 2437 MHz; Duty Cycle: 1:1

Medium: M2450 Medium parameters used (interpolated): $f = 2437$ MHz; $\sigma = 2.01$ mho/m; $\epsilon_r = 51.2$; $\rho = 1000$ kg/m³

Phantom section: Flat Section

- Probe: EX3DV4 - SN3722; ConvF(6.68, 6.68, 6.68); Calibrated: 7/29/2013
- Sensor-Surface: 4mm (Mechanical Surface Detection)
- Electronics: DAE3 Sn584; Calibrated: 7/18/2013
- Phantom: SAM with CRP; Type: SAM; Serial: TP 1310
- Measurement SW: DASY4, V4.7 Build 71; Postprocessing SW: SEMCAD, V1.8 Build 184

Area Scan (121x141x1): Measurement grid: dx=10mm, dy=10mm

Maximum value of SAR (interpolated) = 0.050 mW/g

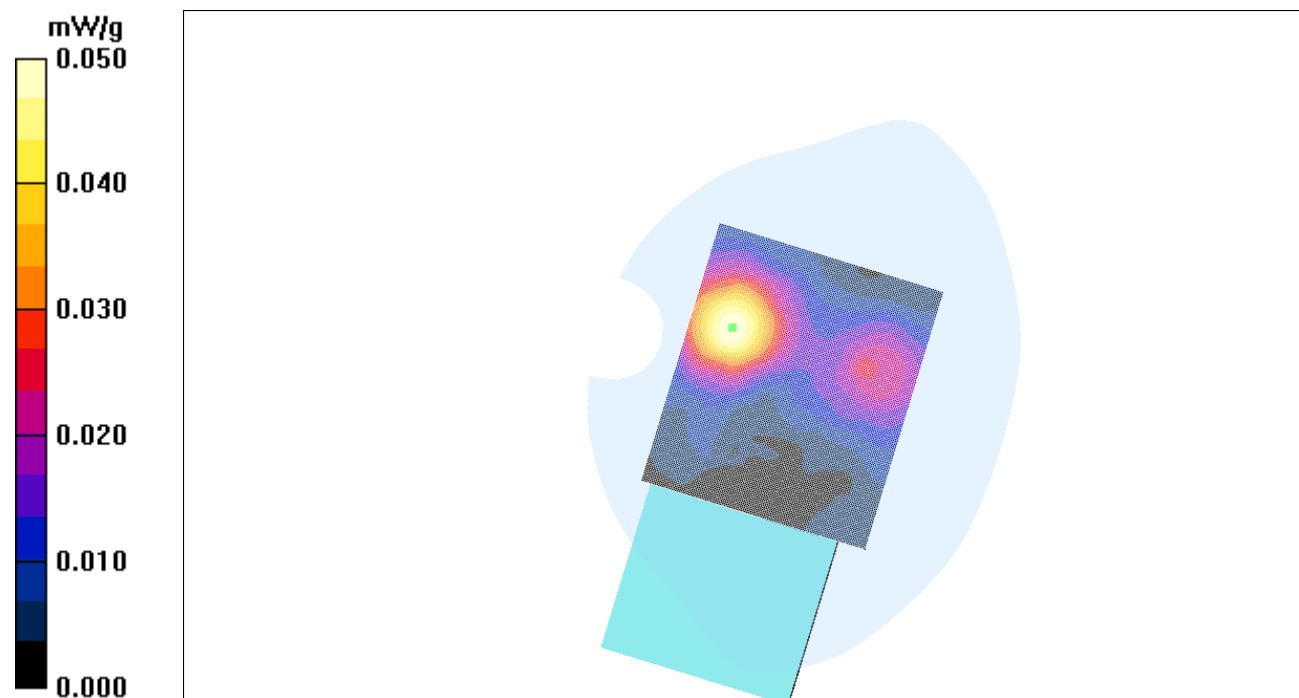
Zoom Scan (7x7x7)/Cube 0: Measurement grid: dx=5mm, dy=5mm, dz=5mm

Reference Value = 2.35 V/m; Power Drift = 0.369 dB

Peak SAR (extrapolated) = 0.078 W/kg

SAR(1 g) = 0.045 mW/g; SAR(10 g) = 0.027 mW/g

Maximum value of SAR (measured) = 0.049 mW/g



n-mode back 40Mhz

Date/Time: 2/5/2014 3:45:23 AM

DUT: Spirent;

Communication System: DTS ; ; Frequency: 2437 MHz; Duty Cycle: 1:1

Medium: M2450 Medium parameters used (interpolated): $f = 2437$ MHz; $\sigma = 2.01$ mho/m; $\epsilon_r = 51.2$; $\rho = 1000$ kg/m³

Phantom section: Flat Section

- Probe: EX3DV4 - SN3722; ConvF(6.68, 6.68, 6.68); Calibrated: 7/29/2013
- Sensor-Surface: 4mm (Mechanical Surface Detection)
- Electronics: DAE3 Sn584; Calibrated: 7/18/2013
- Phantom: SAM with CRP; Type: SAM; Serial: TP 1310
- Measurement SW: DASY4, V4.7 Build 71; Postprocessing SW: SEMCAD, V1.8 Build 184

Area Scan (121x141x1): Measurement grid: dx=10mm, dy=10mm

Maximum value of SAR (interpolated) = 0.049 mW/g

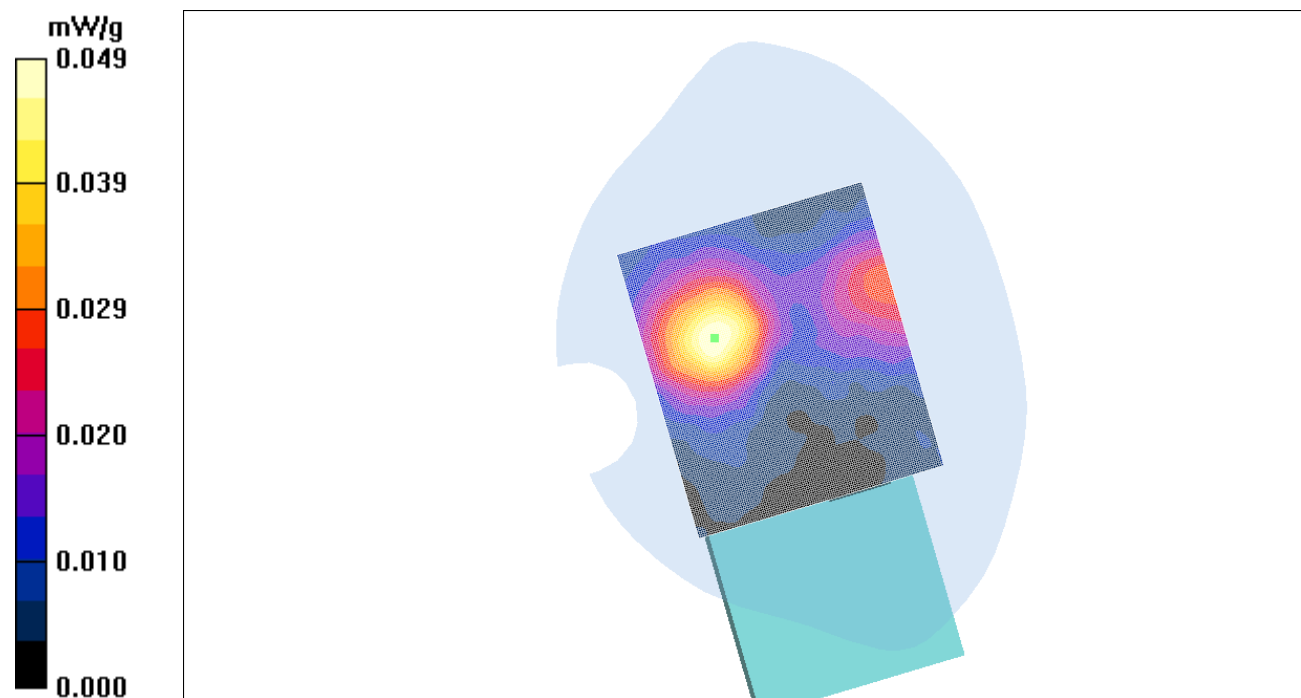
Zoom Scan (7x7x7)/Cube 0: Measurement grid: dx=5mm, dy=5mm, dz=5mm

Reference Value = 2.41 V/m; Power Drift = 0.408 dB

Peak SAR (extrapolated) = 0.078 W/kg

SAR(1 g) = 0.044 mW/g; SAR(10 g) = 0.026 mW/g

Maximum value of SAR (measured) = 0.047 mW/g



n-mode face 20 Mhz

Date/Time: 2/5/2014 5:51:07 PM

DUT: Spirent;

Communication System: DTS ; ; Frequency: 2437 MHz;Duty Cycle: 1:1

Medium: M2450 Medium parameters used (interpolated): $f = 2437$ MHz; $\sigma = 2.01$ mho/m; $\epsilon_r = 51.2$; $\rho = 1000$ kg/m³

Phantom section: Flat Section

- Probe: EX3DV4 - SN3722; ConvF(6.68, 6.68, 6.68); Calibrated: 7/29/2013

- Sensor-Surface: 4mm (Mechanical Surface Detection)

- Electronics: DAE3 Sn584; Calibrated: 7/18/2013

- Phantom: SAM with CRP; Type: SAM; Serial: TP 1310

- Measurement SW: DASY4, V4.7 Build 71; Postprocessing SW: SEMCAD, V1.8 Build 184

Area Scan (121x141x1): Measurement grid: dx=10mm, dy=10mm

Maximum value of SAR (interpolated) = 1.12 mW/g

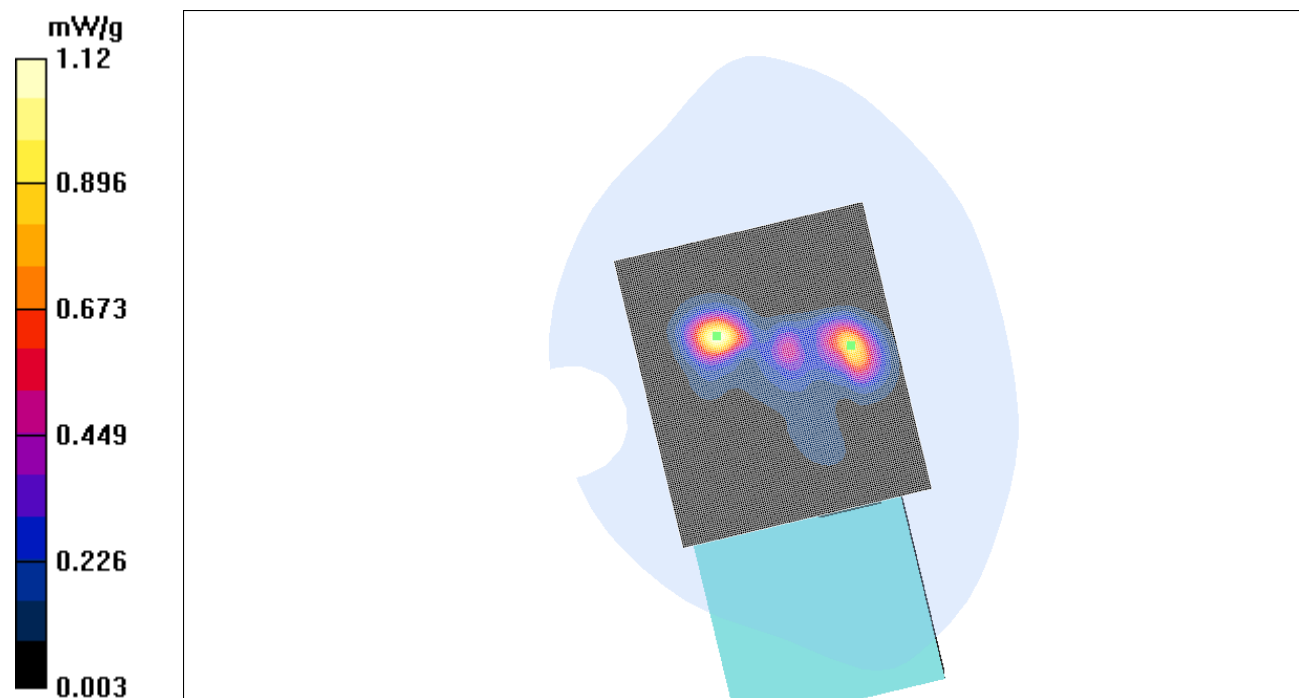
Zoom Scan (7x7x7)/Cube 0: Measurement grid: dx=5mm, dy=5mm, dz=5mm

Reference Value = 11.2 V/m; Power Drift = 0.359 dB

Peak SAR (extrapolated) = 2.17 W/kg

SAR(1 g) = 0.559 mW/g; SAR(10 g) = 0.416 mW/g

Maximum value of SAR (measured) = 1.22 mW/g



n-mode face 40 Mh

Date/Time: 2/6/2014 11:11:14 AM

DUT: Spirent;

Communication System: DTS ; ; Frequency: 2437 MHz;Duty Cycle: 1:1

Medium: M2450 Medium parameters used (interpolated): $f = 2437$ MHz; $\sigma = 2.01$ mho/m; $\epsilon_r = 51.2$; $\rho = 1000$ kg/m³

Phantom section: Flat Section

- Probe: EX3DV4 - SN3722; ConvF(6.68, 6.68, 6.68); Calibrated: 7/29/2013
- Sensor-Surface: 4mm (Mechanical Surface Detection)
- Electronics: DAE3 Sn584; Calibrated: 7/18/2013
- Phantom: SAM with CRP; Type: SAM; Serial: TP 1310
- Measurement SW: DASY4, V4.7 Build 71; Postprocessing SW: SEMCAD, V1.8 Build 184

Area Scan (121x141x1): Measurement grid: dx=10mm, dy=10mm

Maximum value of SAR (interpolated) = 1.02 mW/g

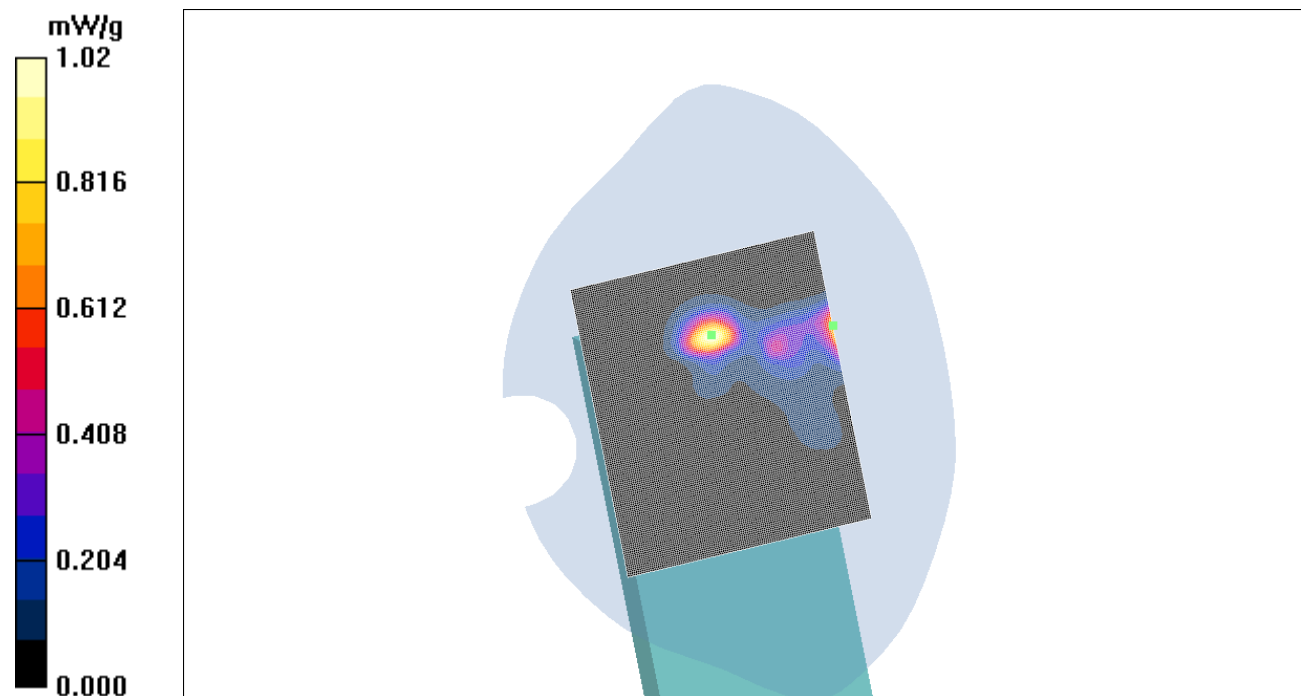
Zoom Scan (7x7x7)/Cube 0: Measurement grid: dx=5mm, dy=5mm, dz=5mm

Reference Value = 5.18 V/m; Power Drift = 0.274 dB

Peak SAR (extrapolated) = 1.86 W/kg

SAR(1 g) = 0.586 mW/g; SAR(10 g) = 0.352 mW/g

Maximum value of SAR (measured) = 1.04 mW/g



n-mode right edge 20 Mhz

Date/Time: 2/6/2014 1:54:44 P M

DUT: Spirent;

Communication System: DTS ; ; Frequency: 2437 MHz;Duty Cycle: 1:1

Medium: M2450 Medium parameters used (interpolated): $f = 2437$ MHz; $\sigma = 2.01$ mho/m; $\epsilon_r = 51.2$; $\rho = 1000$ kg/m³

Phantom section: Flat Section

- Probe: EX3DV4 - SN3722; ConvF(6.68, 6.68, 6.68); Calibrated: 7/29/2013
- Sensor-Surface: 4mm (Mechanical Surface Detection)
- Electronics: DAE3 Sn584; Calibrated: 7/18/2013
- Phantom: SAM with CRP; Type: SAM; Serial: TP 1310
- Measurement SW: DASYS4, V4.7 Build 71; Postprocessing SW: SEMCAD, V1.8 Build 184

Area Scan (81x131x1): Measurement grid: dx=10mm, dy=10mm
Maximum value of SAR (interpolated) = 1.11 mW/g

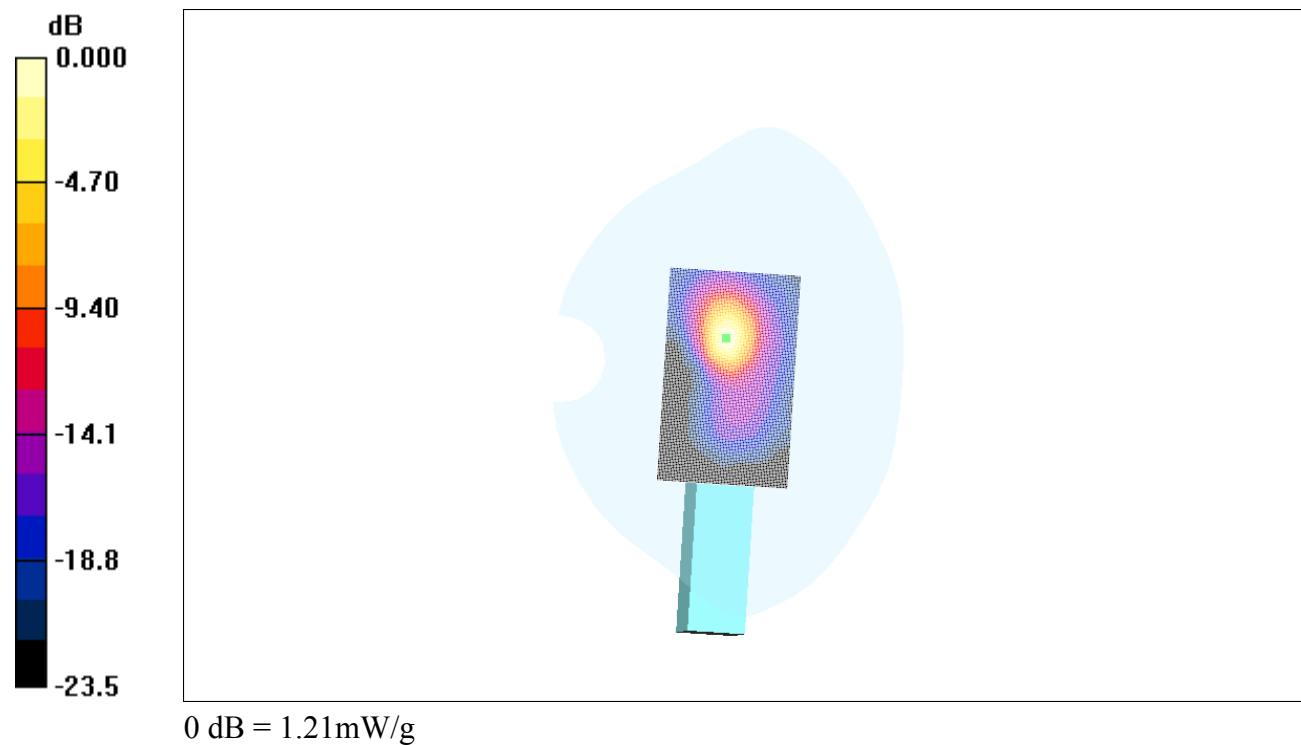
Zoom Scan (7x7x7)/Cube 0: Measurement grid: dx=5mm, dy=5mm, dz=5mm

Reference Value = 8.29 V/m; Power Drift = 0.521 dB

Peak SAR (extrapolated) = 2.30 W/kg

SAR(1 g) = 0.764 mW/g; SAR(10 g) = 0.406 mW/g

Maximum value of SAR (measured) = 1.21 mW/g



n-mode right edge 40 Mhz

Date/Time: 2/7/2014 3:34:13 PM

DUT: Spirent;

Communication System: DTS ; ; Frequency: 2437 MHz;Duty Cycle: 1:1

Medium: M2450 Medium parameters used (interpolated): $f = 2437$ MHz; $\sigma = 2.01$ mho/m; $\epsilon_r = 51.2$; $\rho = 1000$ kg/m³

Phantom section: Flat Section

- Probe: EX3DV4 - SN3722; ConvF(6.68, 6.68, 6.68); Calibrated: 7/29/2013
- Sensor-Surface: 4mm (Mechanical Surface Detection)
- Electronics: DAE3 Sn584; Calibrated: 7/18/2013
- Phantom: SAM with CRP; Type: SAM; Serial: TP 1310
- Measurement SW: DASY4, V4.7 Build 71; Postprocessing SW: SEMCAD, V1.8 Build 184

Area Scan (81x131x1): Measurement grid: dx=10mm, dy=10mm
Maximum value of SAR (interpolated) = 1.10 mW/g

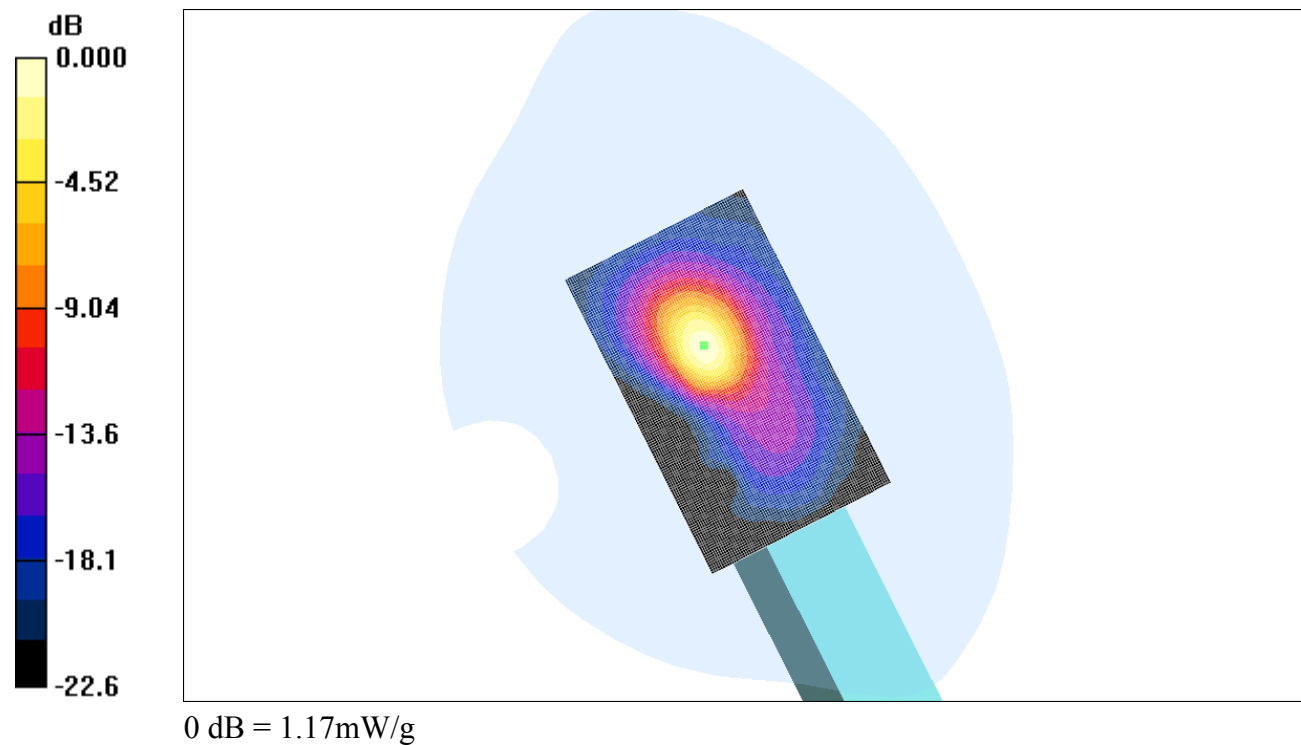
Zoom Scan (7x7x7)/Cube 0: Measurement grid: dx=5mm, dy=5mm, dz=5mm

Reference Value = 15.3 V/m; Power Drift = 0.438 dB

Peak SAR (extrapolated) = 2.18 W/kg

SAR(1 g) = 0.787 mW/g; SAR(10 g) = 0.402 mW/g

Maximum value of SAR (measured) = 1.17 mW/g



n-mode Top edge 20 Mhz

Date/Time: 2/6/2014 5:43:43 PM

DUT: Spirent;

Communication System: DTS ; ; Frequency: 2437 MHz;Duty Cycle: 1:1

Medium: M2450 Medium parameters used (interpolated): $f = 2437$ MHz; $\sigma = 2.01$ mho/m; $\epsilon_r = 51.2$; $\rho = 1000$ kg/m³

Phantom section: Flat Section

- Probe: EX3DV4 - SN3722; ConvF(6.68, 6.68, 6.68); Calibrated: 7/29/2013
- Sensor-Surface: 4mm (Mechanical Surface Detection)
- Electronics: DAE3 Sn584; Calibrated: 7/18/2013
- Phantom: SAM with CRP; Type: SAM; Serial: TP 1310
- Measurement SW: DASY4, V4.7 Build 71; Postprocessing SW: SEMCAD, V1.8 Build 184

Area Scan (91x141x1): Measurement grid: dx=10mm, dy=10mm

Maximum value of SAR (interpolated) = 0.953 mW/g

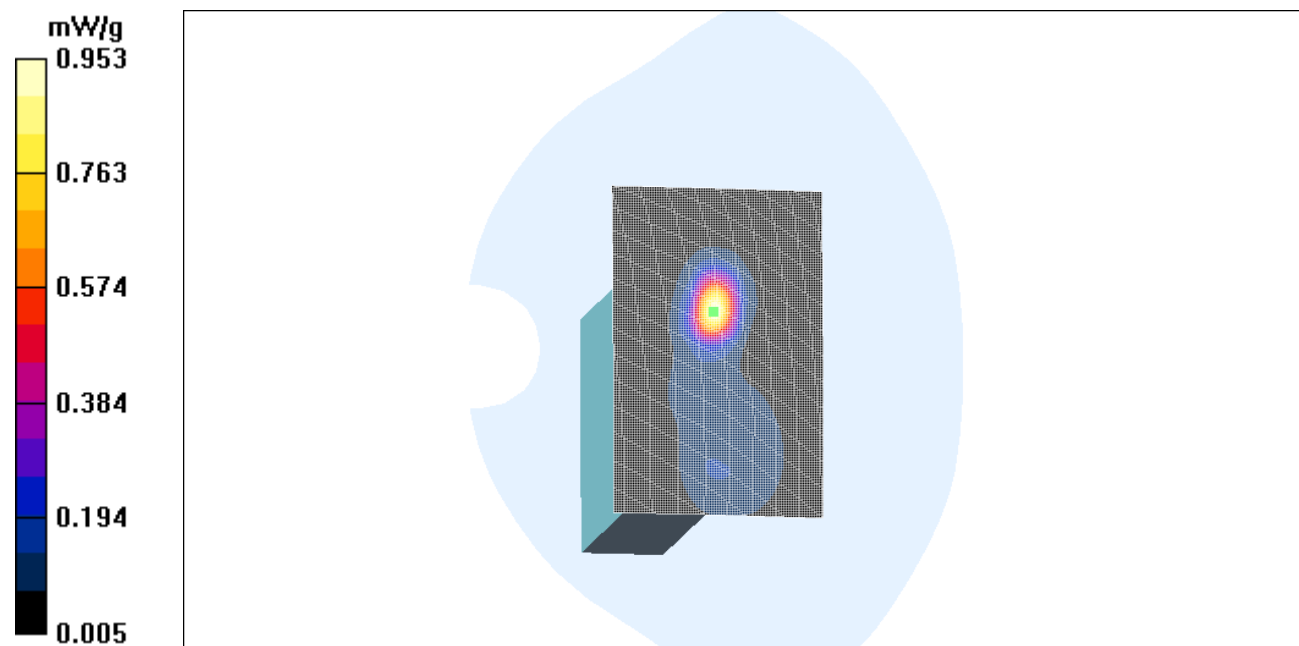
Zoom Scan (7x7x7)/Cube 0: Measurement grid: dx=5mm, dy=5mm, dz=5mm

Reference Value = 10.1 V/m; Power Drift = -0.299 dB

Peak SAR (extrapolated) = 1.57 W/kg

SAR(1 g) = 0.644 mW/g; SAR(10 g) = 0.316 mW/g

Maximum value of SAR (measured) = 0.778 mW/g



n-mode Top edge 40 Mhz

Date/Time: 2/7/2014 09:35:48 AM

DUT: Spirent;

Communication System: DTS ; ; Frequency: 2437 MHz;Duty Cycle: 1:1

Medium: M2450 Medium parameters used (interpolated): $f = 2437$ MHz; $\sigma = 2.01$ mho/m; $\epsilon_r = 51.2$; $\rho = 1000$ kg/m³

Phantom section: Flat Section

- Probe: EX3DV4 - SN3722; ConvF(6.68, 6.68, 6.68); Calibrated: 7/29/2013
- Sensor-Surface: 4mm (Mechanical Surface Detection)
- Electronics: DAE3 Sn584; Calibrated: 7/18/2013
- Phantom: SAM with CRP; Type: SAM; Serial: TP 1310
- Measurement SW: DASY4, V4.7 Build 71; Postprocessing SW: SEMCAD, V1.8 Build 184

Area Scan (91x141x1): Measurement grid: dx=10mm, dy=10mm

Maximum value of SAR (interpolated) = 1.05 mW/g

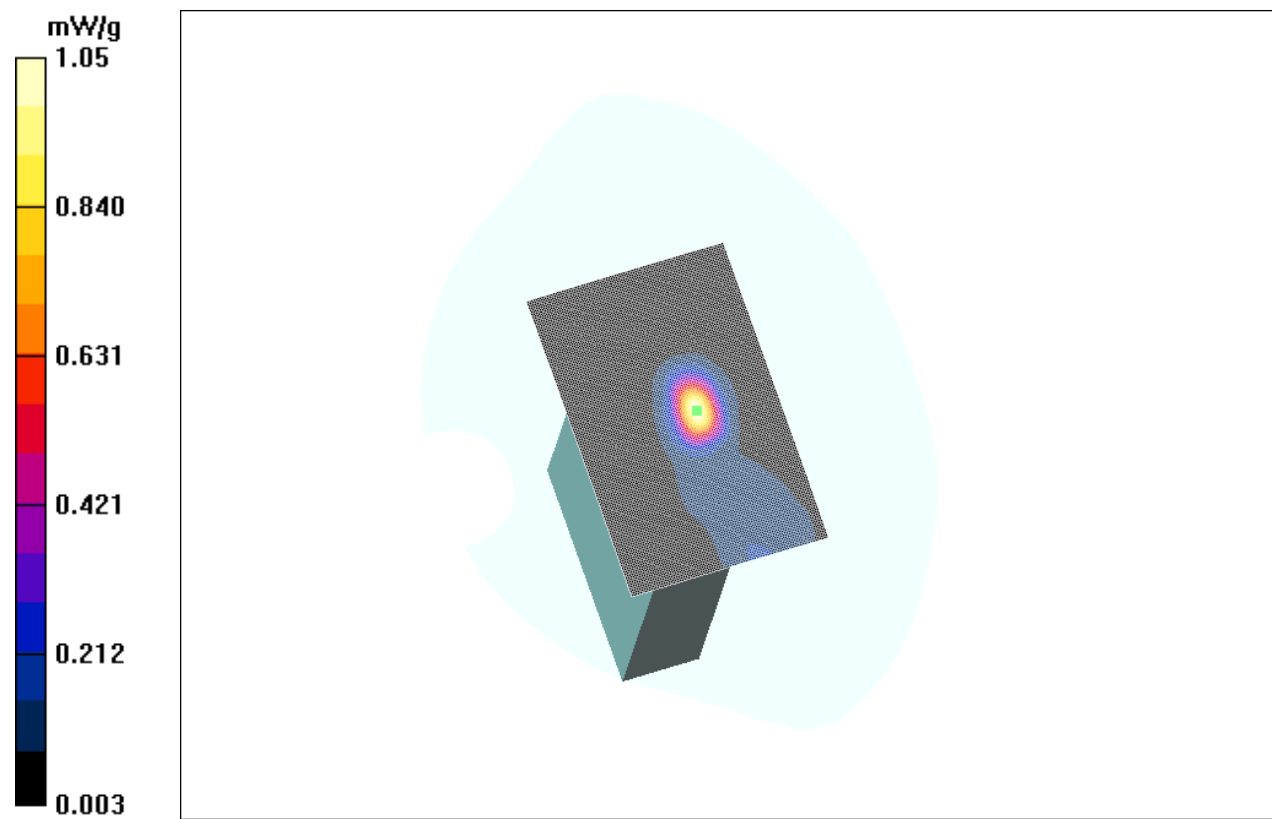
Zoom Scan (7x7x7)/Cube 0: Measurement grid: dx=5mm, dy=5mm, dz=5mm

Reference Value = 16.4 V/m; Power Drift = -0.759 dB

Peak SAR (extrapolated) = 1.64 W/kg

SAR(1 g) = 0.697 mW/g; SAR(10 g) = 0.342 mW/g

Maximum value of SAR (measured) = 0.841 mW/g



g-mode back

Date/Time: 2/10/2014 9:52:39 AM

DUT: Spirent;

Communication System: DTS ; ; Frequency: 2437 MHz; Duty Cycle: 1:1

Medium: M2450 Medium parameters used (interpolated): $f = 2437$ MHz; $\sigma = 2.01$ mho/m; $\epsilon_r = 51.2$; $\rho = 1000$ kg/m³

Phantom section: Flat Section

- Probe: EX3DV4 - SN3722; ConvF(6.68, 6.68, 6.68); Calibrated: 7/29/2013
- Sensor-Surface: 4mm (Mechanical Surface Detection)
- Electronics: DAE3 Sn584; Calibrated: 7/18/2013
- Phantom: SAM with CRP; Type: SAM; Serial: TP 1310
- Measurement SW: DASY4, V4.7 Build 71; Postprocessing SW: SEMCAD, V1.8 Build 184

Area Scan (121x141x1): Measurement grid: dx=10mm, dy=10mm

Maximum value of SAR (interpolated) = 0.015 mW/g

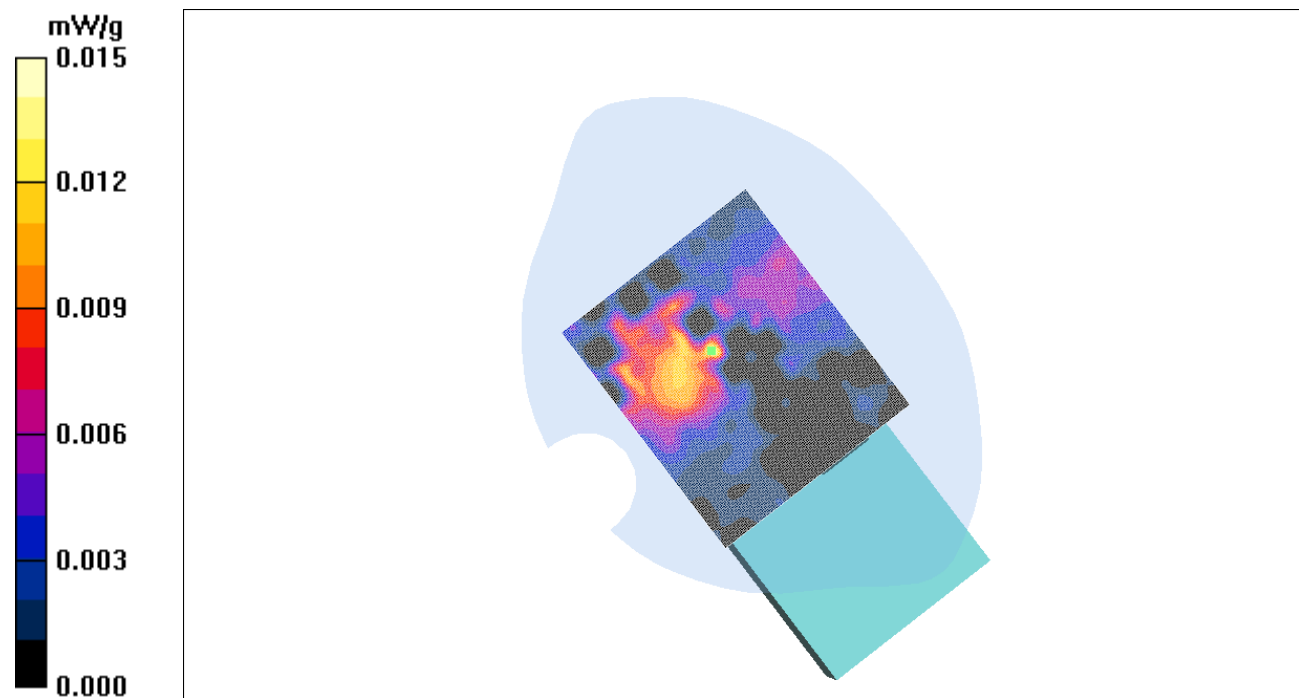
Zoom Scan (7x7x7)/Cube 0: Measurement grid: dx=5mm, dy=5mm, dz=5mm

Reference Value = 1.30 V/m; Power Drift = -3.41 dB

Peak SAR (extrapolated) = 0.013 W/kg

SAR(1 g) = 0.0175 mW/g; SAR(10 g) = 0.00406 mW/g

Maximum value of SAR (measured) = 0.011 mW/g



g-mode face

Date/Time: 2/10/2014 11:17:42 AM

DUT: Spirent;

Communication System: DTS ; Frequency: 2412 MHz; Duty Cycle: 1:1

Medium: M2450 Medium parameters used (interpolated): $f = 2412$ MHz; $\sigma = 1.97$ mho/m; $\epsilon_r = 51.2$; $\rho = 1000$ kg/m³

Phantom section: Flat Section

- Probe: EX3DV4 - SN3722; ConvF(6.68, 6.68, 6.68); Calibrated: 7/29/2013
- Sensor-Surface: 4mm (Mechanical Surface Detection)
- Electronics: DAE3 Sn584; Calibrated: 7/18/2013
- Phantom: SAM with CRP; Type: SAM; Serial: TP 1310
- Measurement SW: DASY4, V4.7 Build 71; Postprocessing SW: SEMCAD, V1.8 Build 184

Area Scan (121x141x1): Measurement grid: dx=10mm, dy=10mm
Maximum value of SAR (interpolated) = 0.205 mW/g

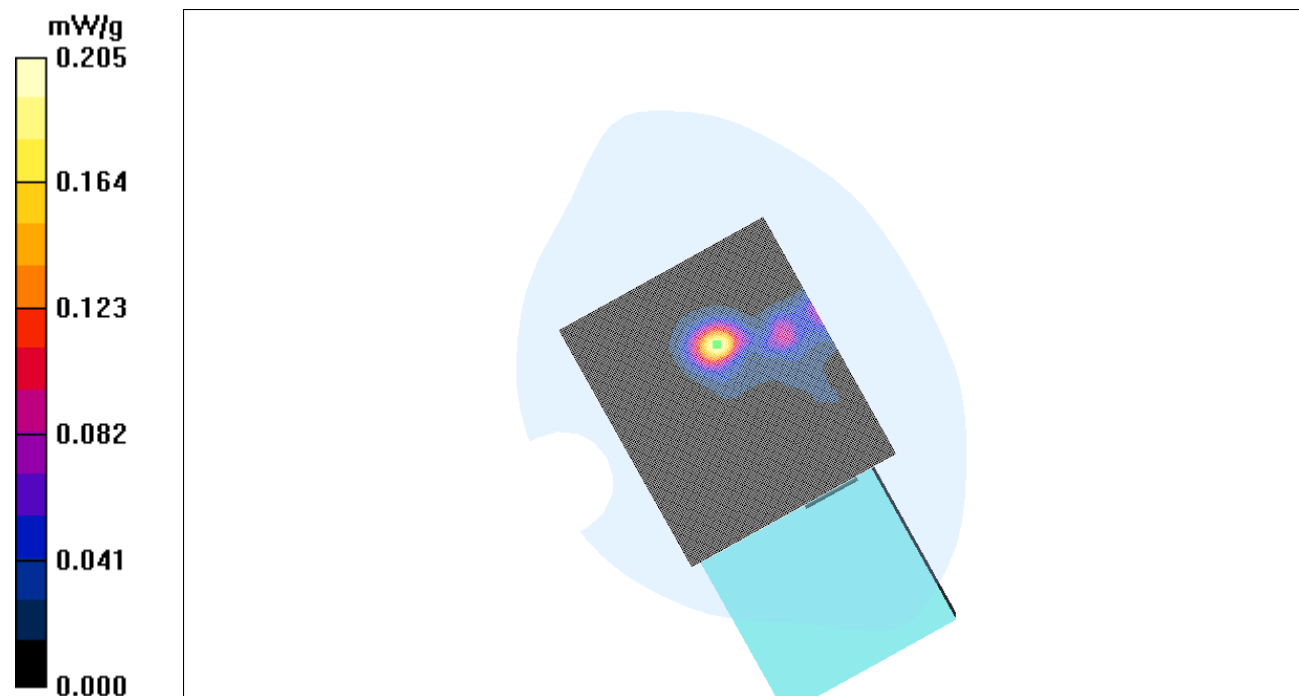
Zoom Scan (7x7x7)/Cube 0: Measurement grid: dx=5mm, dy=5mm, dz=5mm

Reference Value = 3.26 V/m; Power Drift = 0.024 dB

Peak SAR (extrapolated) = 0.370 W/kg

SAR(1 g) = 0.170 mW/g; SAR(10 g) = 0.069 mW/g

Maximum value of SAR (measured) = 0.206 mW/g



g-mode right edge

Date/Time: 2/10/2014 1:47:31 PM

DUT: Spirent;

Communication System: DTS ; ; Frequency: 2437 MHz; Duty Cycle: 1:1

Medium: M2450 Medium parameters used (interpolated): $f = 2437$ MHz; $\sigma = 2.01$ mho/m; $\epsilon_r = 51.2$; $\rho = 1000$ kg/m³

Phantom section: Flat Section

- Probe: EX3DV4 - SN3722; ConvF(6.68, 6.68, 6.68); Calibrated: 7/29/2013
- Sensor-Surface: 4mm (Mechanical Surface Detection)
- Electronics: DAE3 Sn584; Calibrated: 7/18/2013
- Phantom: SAM with CRP; Type: SAM; Serial: TP 1310
- Measurement SW: DASY4, V4.7 Build 71; Postprocessing SW: SEMCAD, V1.8 Build 184

Area Scan (81x131x1): Measurement grid: dx=10mm, dy=10mm
Maximum value of SAR (interpolated) = 0.263 mW/g

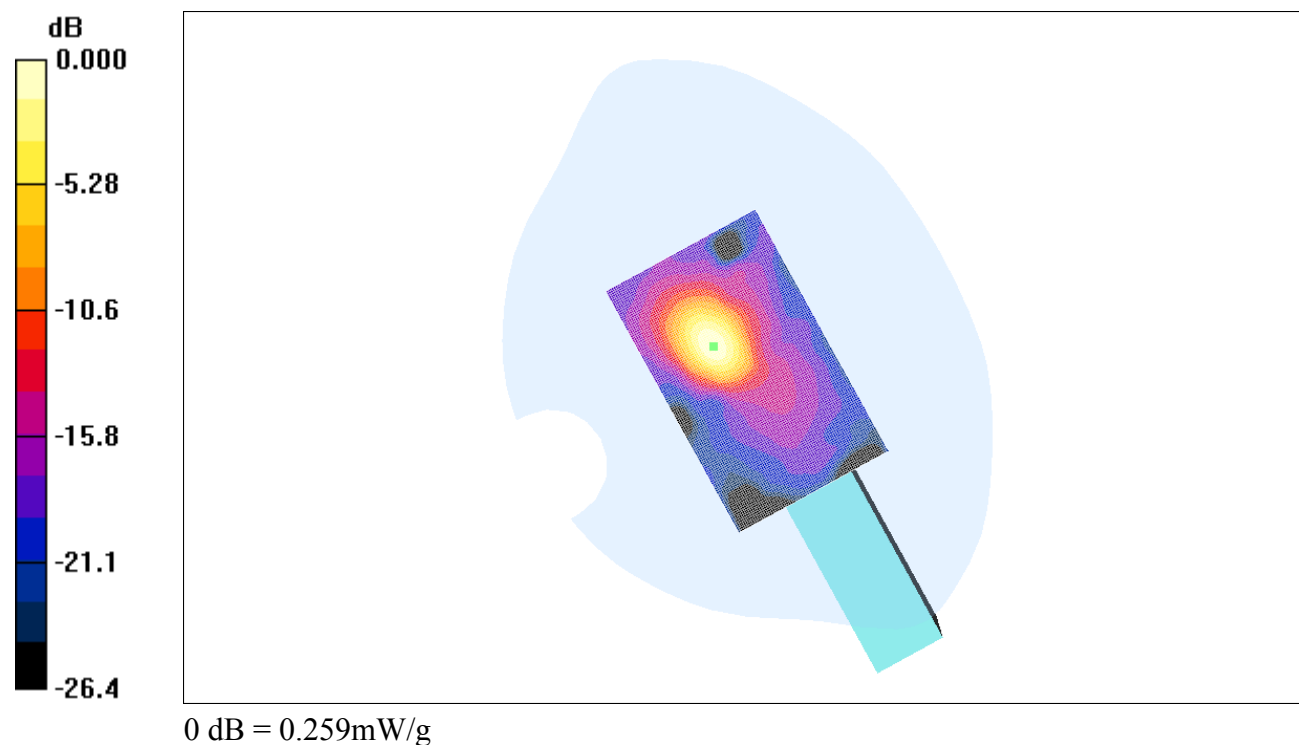
Zoom Scan (7x7x7)/Cube 0: Measurement grid: dx=5mm, dy=5mm, dz=5mm

Reference Value = 5.33 V/m; Power Drift = -0.054 dB

Peak SAR (extrapolated) = 0.486 W/kg

SAR(1 g) = 0.213 mW/g; SAR(10 g) = 0.086 mW/g

Maximum value of SAR (measured) = 0.259 mW/g



g-mode Top edge

Date/Time: 2/10/2014 4:03:36 PM

DUT: Spirent; Communication System: DTS ; ; Frequency: 2437 MHz;Duty Cycle: 1:1

Medium: M2450 Medium parameters used (interpolated): $f = 2437$ MHz; $\sigma = 2.01$ mho/m; $\epsilon_r = 51.2$; $\rho = 1000$ kg/m³

Phantom section: Flat Section

- Probe: EX3DV4 - SN3722; ConvF(6.68, 6.68, 6.68); Calibrated: 7/29/2013
- Sensor-Surface: 4mm (Mechanical Surface Detection)
- Electronics: DAE3 Sn584; Calibrated: 7/18/2013
- Phantom: SAM with CRP; Type: SAM; Serial: TP 1310
- Measurement SW: DASYS4, V4.7 Build 71; Postprocessing SW: SEMCAD, V1.8 Build 184

Area Scan (91x141x1): Measurement grid: dx=10mm, dy=10mm

Maximum value of SAR (interpolated) = 0.167 mW/g

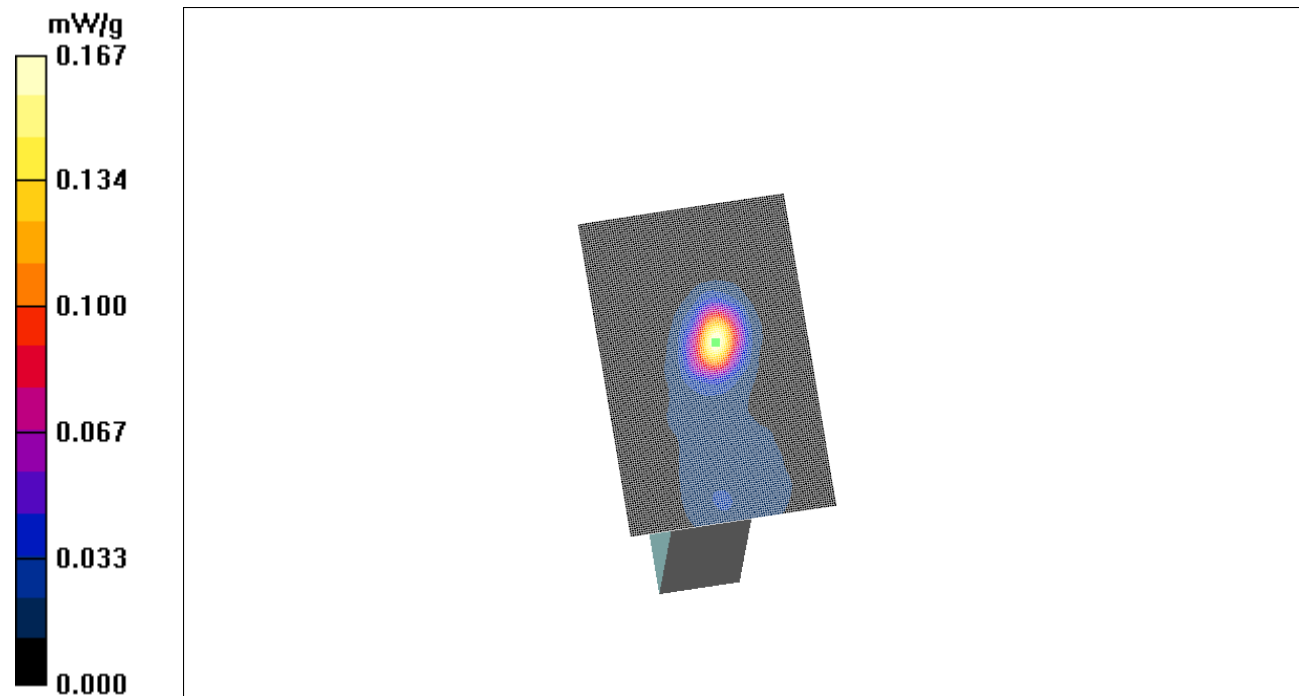
Zoom Scan (7x7x7)/Cube 0: Measurement grid: dx=5mm, dy=5mm, dz=5mm

Reference Value = 7.26 V/m; Power Drift = 0.175 dB

Peak SAR (extrapolated) = 0.307 W/kg

SAR(1 g) = 0.147 mW/g; SAR(10 g) = 0.064 mW/g

Maximum value of SAR (measured) = 0.174 mW/g



b-mode face

Date/Time: 1/30/2014 11:47:20 AM

DUT: Spirent;

Communication System: DTS ; ; Frequency: 2437 MHz; Duty Cycle: 1:1

Medium: M2450 Medium parameters used (interpolated): $f = 2437$ MHz; $\sigma = 2.01$ mho/m; $\epsilon_r = 51.2$; $\rho = 1000$ kg/m³

Phantom section: Flat Section

- Probe: EX3DV4 - SN3722; ConvF(6.68, 6.68, 6.68); Calibrated: 7/29/2013
- Sensor-Surface: 4mm (Mechanical Surface Detection)
- Electronics: DAE3 Sn584; Calibrated: 7/18/2013
- Phantom: SAM with CRP; Type: SAM; Serial: TP 1310
- Measurement SW: DASY4, V4.7 Build 71; Postprocessing SW: SEMCAD, V1.8 Build 184

Area Scan (121x141x1): Measurement grid: dx=10mm, dy=10mm

Maximum value of SAR (interpolated) = 0.073 mW/g

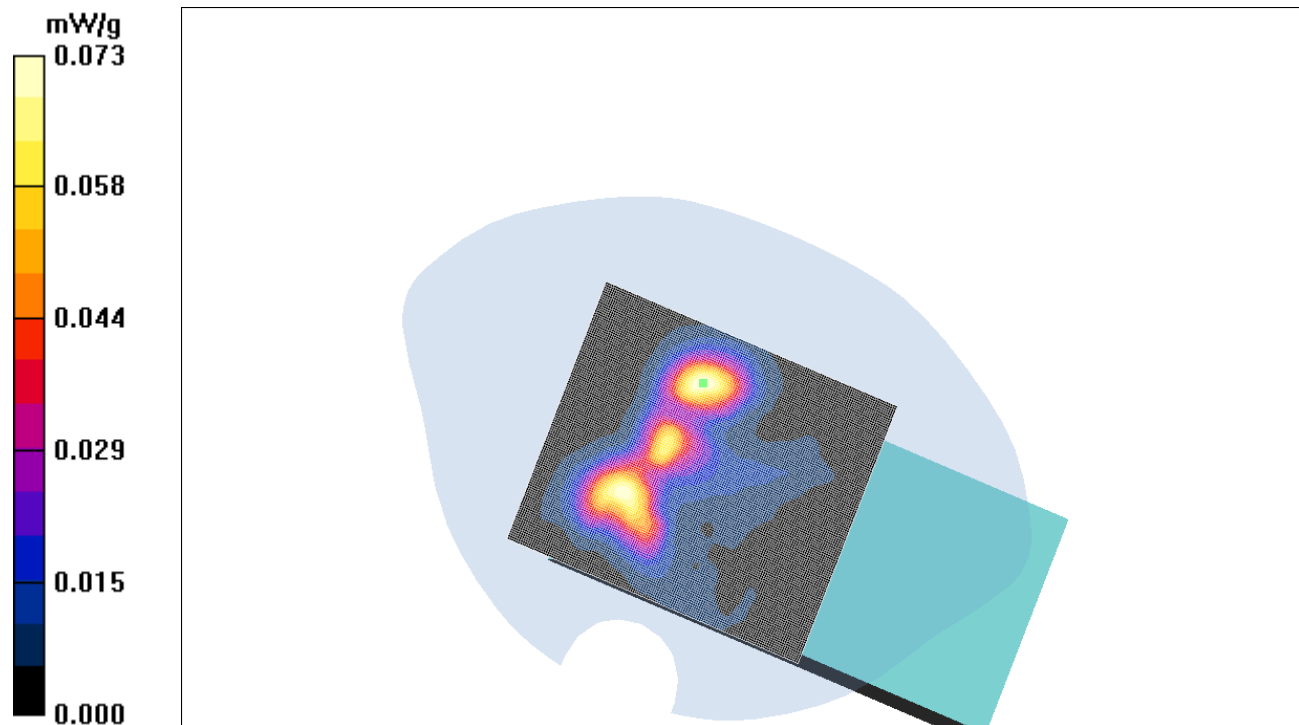
Zoom Scan (7x7x7)/Cube 0: Measurement grid: dx=5mm, dy=5mm, dz=5mm

Reference Value = 3.18 V/m; Power Drift = 0.123 dB

Peak SAR (extrapolated) = 0.122 W/kg

SAR(1 g) = 0.064 mW/g; SAR(10 g) = 0.030 mW/g

Maximum value of SAR (measured) = 0.073 mW/g



b-mode right edge

Date/Time: 1/30/2014 2:30:48 PM

DUT: Spirent;

Communication System: DTS ; ; Frequency: 2437 MHz; Duty Cycle: 1:1

Medium: M2450 Medium parameters used (interpolated): $f = 2437$ MHz; $\sigma = 2.01$ mho/m; $\epsilon_r = 51.2$; $\rho = 1000$ kg/m³

Phantom section: Flat Section

- Probe: EX3DV4 - SN3722; ConvF(6.68, 6.68, 6.68); Calibrated: 7/29/2013
- Sensor-Surface: 4mm (Mechanical Surface Detection)
- Electronics: DAE3 Sn584; Calibrated: 7/18/2013
- Phantom: SAM with CRP; Type: SAM; Serial: TP 1310
- Measurement SW: DASY4, V4.7 Build 71; Postprocessing SW: SEMCAD, V1.8 Build 184

Area Scan (81x131x1): Measurement grid: dx=10mm, dy=10mm

Maximum value of SAR (interpolated) = 0.191 mW/g

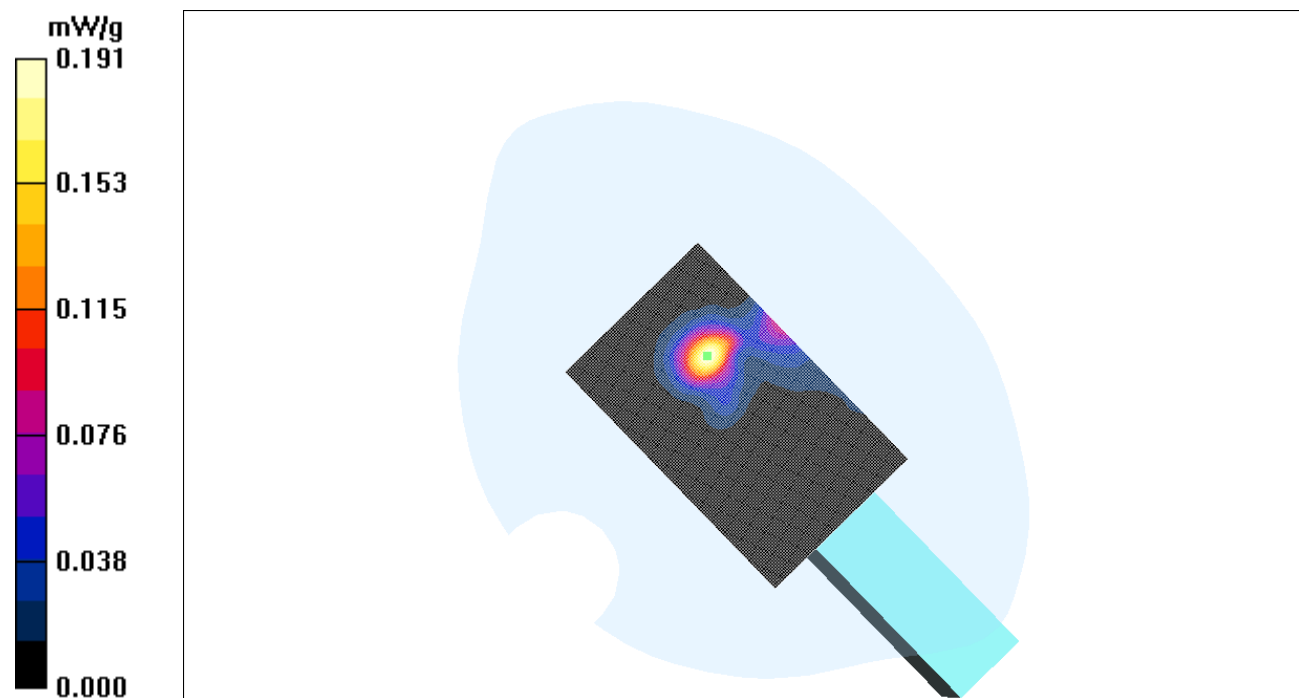
Zoom Scan (7x7x7)/Cube 0: Measurement grid: dx=5mm, dy=5mm, dz=5mm

Reference Value = 4.43 V/m; Power Drift = -0.151 dB

Peak SAR (extrapolated) = 0.361 W/kg

SAR(1 g) = 0.169 mW/g; SAR(10 g) = 0.071 mW/g

Maximum value of SAR (measured) = 0.204 mW/g



b-mode Top edge

Date/Time: 1/30/2014 4:13:28 PM

DUT: Spirent;

Communication System: DTS ; ; Frequency: 2437 MHz; Duty Cycle: 1:1

Medium: M2450 Medium parameters used (interpolated): $f = 2437$ MHz; $\sigma = 2.01$ mho/m; $\epsilon_r = 51.2$; $\rho = 1000$ kg/m³

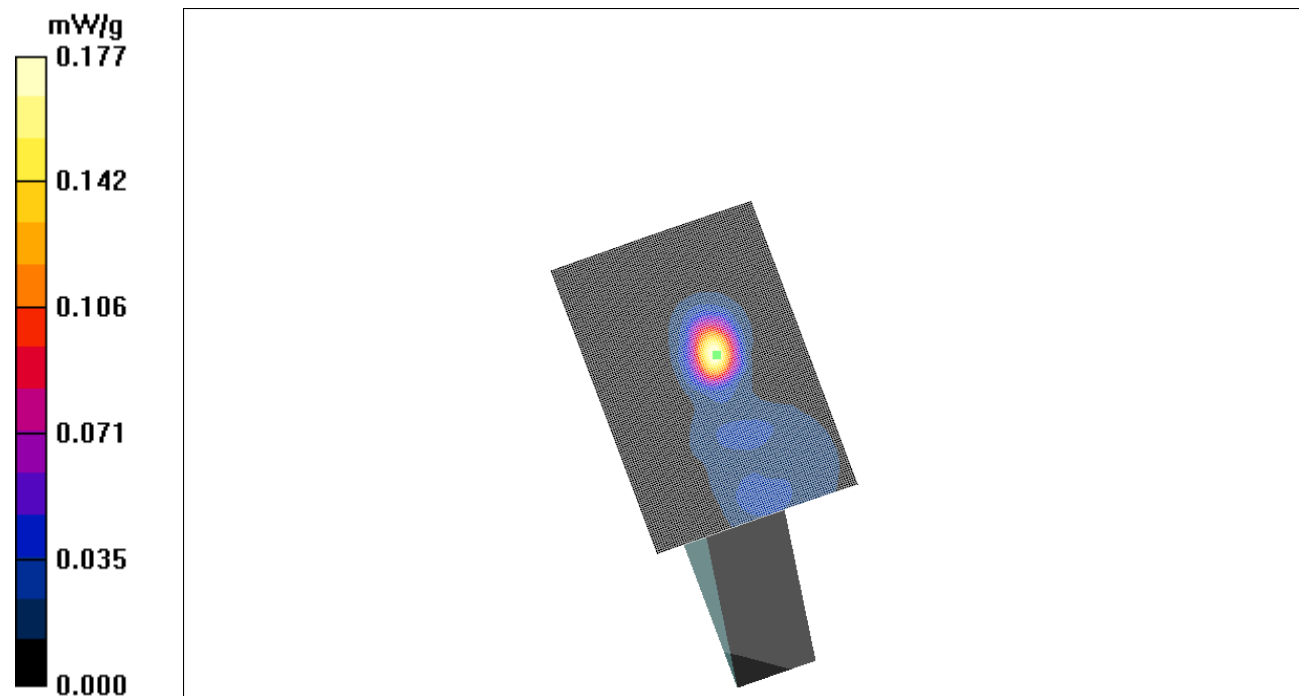
Phantom section: Flat Section

- Probe: EX3DV4 - SN3722; ConvF(6.68, 6.68, 6.68); Calibrated: 7/29/2013
- Sensor-Surface: 4mm (Mechanical Surface Detection)
- Electronics: DAE3 Sn584; Calibrated: 7/18/2013
- Phantom: SAM with CRP; Type: SAM; Serial: TP 1310
- Measurement SW: DASY4, V4.7 Build 71; Postprocessing SW: SEMCAD, V1.8 Build 184

Area Scan (91x141x1): Measurement grid: dx=10mm, dy=10mm
Maximum value of SAR (interpolated) = 0.177 mW/g

Zoom Scan (7x7x7)/Cube 0: Measurement grid: dx=5mm, dy=5mm, dz=5mm
Reference Value = 6.34 V/m; Power Drift = 0.791 dB
Peak SAR (extrapolated) = 0.318 W/kg
SAR(1 g) = 0.156 mW/g; SAR(10 g) = 0.068 mW/g

Maximum value of SAR (measured) = 0.182 mW/g



b-mode back

Date/Time: 1/31/2014 10:59:33 AM

DUT: Spirent;

Communication System: DTS ; ; Frequency: 2437 MHz;Duty Cycle: 1:1

Medium: M2450 Medium parameters used (interpolated): $f = 2437$ MHz; $\sigma = 2.01$ mho/m; $\epsilon_r = 51.2$; $\rho = 1000$ kg/m³

Phantom section: Flat Section

- Probe: EX3DV4 - SN3722; ConvF(6.68, 6.68, 6.68); Calibrated: 7/29/2013

- Sensor-Surface: 4mm (Mechanical Surface Detection)

- Electronics: DAE3 Sn584; Calibrated: 7/18/2013

- Phantom: SAM with CRP; Type: SAM; Serial: TP 1310

- Measurement SW: DASY4, V4.7 Build 71; Postprocessing SW: SEMCAD, V1.8 Build 184

Area Scan (121x141x1): Measurement grid: dx=10mm, dy=10mm

Maximum value of SAR (interpolated) = 0.010 mW/g

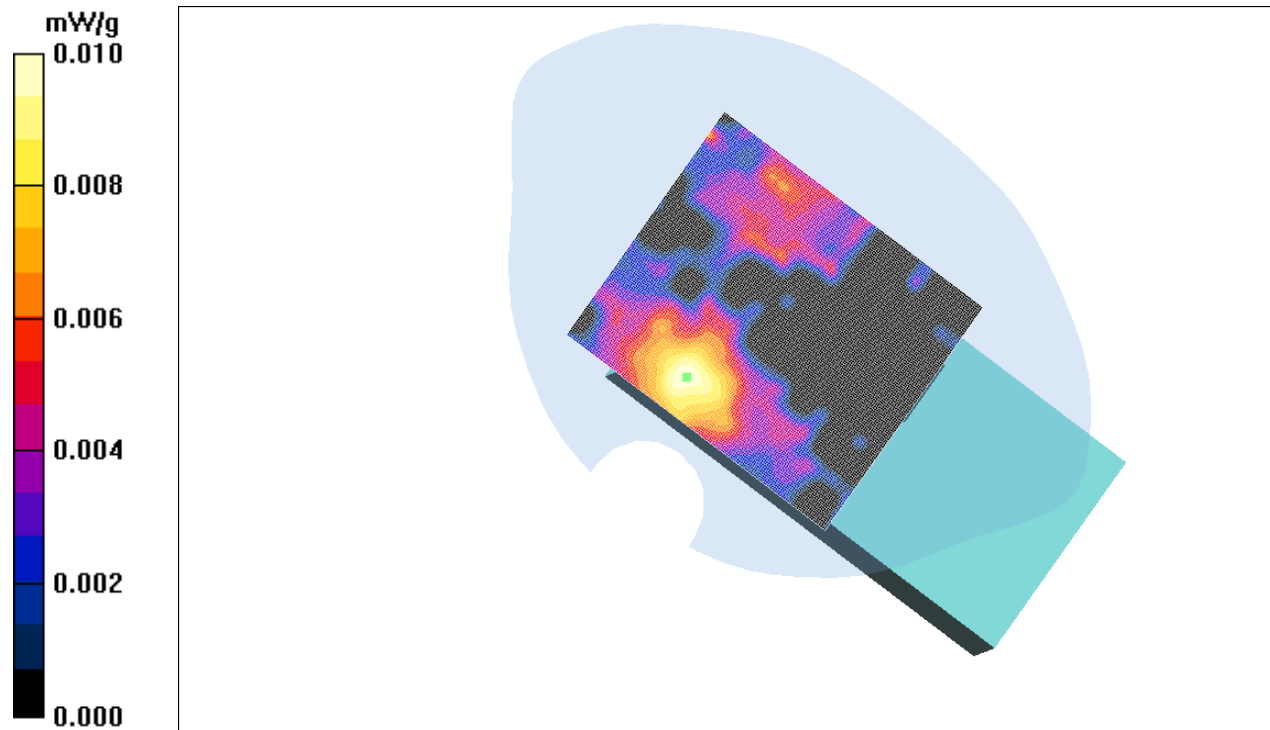
Zoom Scan (7x7x7)/Cube 0: Measurement grid: dx=5mm, dy=5mm, dz=5mm

Reference Value = 1.01 V/m; Power Drift = 1.11 dB

Peak SAR (extrapolated) = 0.017 W/kg

SAR(1 g) = 0.00849 mW/g; SAR(10 g) = 0.00521 mW/g

Maximum value of SAR (measured) = 0.010 mW/g





APPENDIX B - SYSTEM PERFORMANCE CHECK

2450MHz validation

Date/Time: 2/7/2014 1:19:45 PM

DUT: D2450V2;

Communication System: CW; ; Frequency: 2450 MHz; Duty Cycle: 1:1

Medium: M2450 Medium parameters used: $f = 2450$ MHz; $\sigma = 2.01$ mho/m; $\epsilon_r = 51.3$; $\rho = 1000$ kg/m³

Phantom section: Flat Section

- Probe: EX3DV4 - SN3722; ConvF(6.68, 6.68, 6.68); Calibrated: 7/29/2013
- Sensor-Surface: 4mm (Mechanical Surface Detection)
- Electronics: DAE3 Sn584; Calibrated: 7/18/2013
- Phantom: SAM with CRP; Type: SAM; Serial: TP 1310
- Measurement SW: DASY4, V4.7 Build 71; Postprocessing SW: SEMCAD, V1.8 Build 184

Area Scan (51x81x1): Measurement grid: dx=10mm, dy=10mm

Maximum value of SAR (interpolated) = 15.5 mW/g

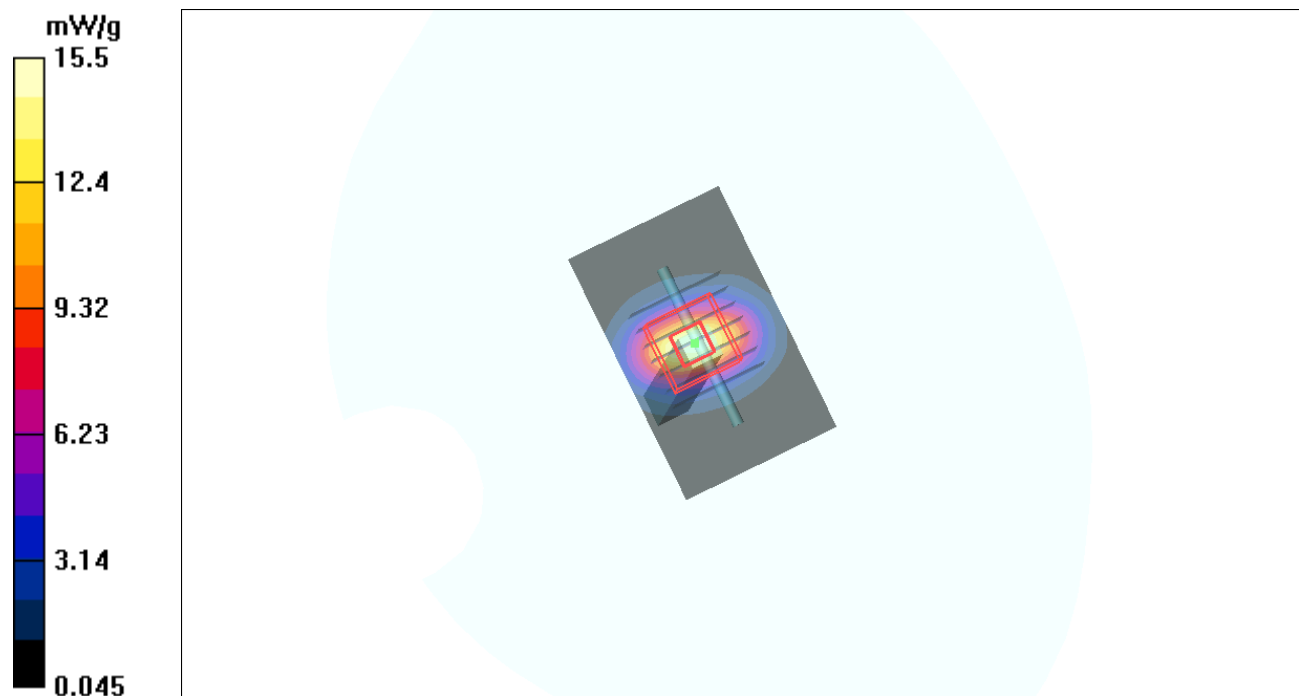
Zoom Scan (7x7x7) (7x7x7)/Cube 0: Measurement grid: dx=5mm, dy=5mm, dz=5mm

Reference Value = 87.6 V/m; Power Drift = -0.346 dB

Peak SAR (extrapolated) = 26.5 W/kg

SAR(1 g) = 12.9 mW/g; SAR(10 g) = 5.99 mW/g

Maximum value of SAR (measured) = 14.9 mW/g





APPENDIX C – PROBE CALIBRATION CERTIFICATE

Calibration Laboratory of
Schmid & Partner
Engineering AG
 Zeughausstrasse 43, 8004 Zurich, Switzerland



S Schweizerischer Kalibrierdienst
C Service suisse d'étalonnage
S Servizio svizzero di taratura
 Swiss Calibration Service

Accredited by the Swiss Accreditation Service (SAS)
 The Swiss Accreditation Service is one of the signatories to the EA
 Multilateral Agreement for the recognition of calibration certificates

Accreditation No.: **SCS 108**

Client **MET Laboratories**

Certificate No: **EX3-3722_Jul13**

CALIBRATION CERTIFICATE

Object **EX3DV4 - SN:3722**

Calibration procedure(s) **QA CAL-01.v8, QA CAL-14.v3, QA CAL-23.v4, QA CAL-25.v4
 Calibration procedure for dosimetric E-field probes**

Calibration date: **July 29, 2013**

This calibration certificate documents the traceability to national standards, which realize the physical units of measurements (SI).
 The measurements and the uncertainties with confidence probability are given on the following pages and are part of the certificate.

All calibrations have been conducted in the closed laboratory facility: environment temperature (22 ± 3)°C and humidity < 70%.

Calibration Equipment used (M&TE critical for calibration)

Primary Standards	ID	Cal Date (Certificate No.)	Scheduled Calibration
Power meter E4419B	GB41293874	04-Apr-13 (No. 217-01733)	Apr-14
Power sensor E4412A	MY41498087	04-Apr-13 (No. 217-01733)	Apr-14
Reference 3 dB Attenuator	SN: S5054 (3c)	04-Apr-13 (No. 217-01737)	Apr-14
Reference 20 dB Attenuator	SN: S5277 (20x)	04-Apr-13 (No. 217-01735)	Apr-14
Reference 30 dB Attenuator	SN: S5129 (30b)	04-Apr-13 (No. 217-01738)	Apr-14
Reference Probe ES3DV2	SN: 3013	28-Dec-12 (No. ES3-3013_Dec12)	Dec-13
DAE4	SN: 660	31-Jan-13 (No. DAE4-660_Jan13)	Jan-14
Secondary Standards	ID	Check Date (in house)	Scheduled Check
RF generator HP 8648C	US3642U01700	4-Aug-99 (in house check Apr-13)	In house check: Apr-15
Network Analyzer HP 8753E	US37390585	18-Oct-01 (in house check Oct-12)	In house check: Oct-13

Calibrated by:	Name Dimce Iliev	Function Laboratory Technician	Signature
Approved by:	Name Katja Pokovic	Function Technical Manager	Signature

Issued: July 29, 2013

This calibration certificate shall not be reproduced except in full without written approval of the laboratory.



Accredited by the Swiss Accreditation Service (SAS)
The Swiss Accreditation Service is one of the signatories to the EA
Multilateral Agreement for the recognition of calibration certificates

Accreditation No.: SCS 108

Glossary:

TSL	tissue simulating liquid
NORM _{x,y,z}	sensitivity in free space
ConvF	sensitivity in TSL / NORM _{x,y,z}
DCP	diode compression point
CF	crest factor (1/duty_cycle) of the RF signal
A, B, C, D	modulation dependent linearization parameters
Polarization φ	φ rotation around probe axis
Polarization ϑ	ϑ rotation around an axis that is in the plane normal to probe axis (at measurement center), i.e., $\vartheta = 0$ is normal to probe axis

Calibration is Performed According to the Following Standards:

- IEEE Std 1528-2003, "IEEE Recommended Practice for Determining the Peak Spatial-Averaged Specific Absorption Rate (SAR) in the Human Head from Wireless Communications Devices: Measurement Techniques", December 2003
- IEC 62209-1, "Procedure to measure the Specific Absorption Rate (SAR) for hand-held devices used in close proximity to the ear (frequency range of 300 MHz to 3 GHz)", February 2005

Methods Applied and Interpretation of Parameters:

- NORM_{x,y,z}**: Assessed for E-field polarization $\vartheta = 0$ ($f \leq 900$ MHz in TEM-cell; $f > 1800$ MHz: R22 waveguide). NORM_{x,y,z} are only intermediate values, i.e., the uncertainties of NORM_{x,y,z} does not affect the E^2 -field uncertainty inside TSL (see below ConvF).
- NORM(f)_{x,y,z}** = NORM_{x,y,z} * frequency_response (see Frequency Response Chart). This linearization is implemented in DASY4 software versions later than 4.2. The uncertainty of the frequency response is included in the stated uncertainty of ConvF.
- DCP_{x,y,z}**: DCP are numerical linearization parameters assessed based on the data of power sweep with CW signal (no uncertainty required). DCP does not depend on frequency nor media.
- PAR**: PAR is the Peak to Average Ratio that is not calibrated but determined based on the signal characteristics
- A_{x,y,z}; B_{x,y,z}; C_{x,y,z}; D_{x,y,z}; VR_{x,y,z}**: A, B, C, D are numerical linearization parameters assessed based on the data of power sweep for specific modulation signal. The parameters do not depend on frequency nor media. VR is the maximum calibration range expressed in RMS voltage across the diode.
- ConvF and Boundary Effect Parameters**: Assessed in flat phantom using E-field (or Temperature Transfer Standard for $f \leq 800$ MHz) and inside waveguide using analytical field distributions based on power measurements for $f > 800$ MHz. The same setups are used for assessment of the parameters applied for boundary compensation (alpha, depth) of which typical uncertainty values are given. These parameters are used in DASY4 software to improve probe accuracy close to the boundary. The sensitivity in TSL corresponds to NORM_{x,y,z} * ConvF whereby the uncertainty corresponds to that given for ConvF. A frequency dependent ConvF is used in DASY version 4.4 and higher which allows extending the validity from ± 50 MHz to ± 100 MHz.
- Spherical isotropy (3D deviation from isotropy)**: in a field of low gradients realized using a flat phantom exposed by a patch antenna.
- Sensor Offset**: The sensor offset corresponds to the offset of virtual measurement center from the probe tip (on probe axis). No tolerance required.

Probe EX3DV4

SN:3722

Manufactured: August 14, 2009
Calibrated: July 29, 2013

Calibrated for DASY/EASY Systems
(Note: non-compatible with DASY2 system!)

DASY/EASY - Parameters of Probe: EX3DV4 - SN:3722

Basic Calibration Parameters

	Sensor X	Sensor Y	Sensor Z	Unc (k=2)
Norm ($\mu\text{V}/(\text{V}/\text{m})^2$) ^A	0.54	0.50	0.58	$\pm 10.1 \%$
DCP (mV) ^B	99.6	98.9	99.7	

Modulation Calibration Parameters

UID	Communication System Name		A dB	B dB $\sqrt{\mu\text{V}}$	C	D dB	VR mV	Unc ^E (k=2)
0	CW	X	0.0	0.0	1.0	0.00	171.8	$\pm 3.5 \%$
		Y	0.0	0.0	1.0		165.4	
		Z	0.0	0.0	1.0		170.8	

The reported uncertainty of measurement is stated as the standard uncertainty of measurement multiplied by the coverage factor $k=2$, which for a normal distribution corresponds to a coverage probability of approximately 95%.

^A The uncertainties of NormX,Y,Z do not affect the E²-field uncertainty inside TSL (see Pages 5 and 6).

^B Numerical linearization parameter: uncertainty not required.

^E Uncertainty is determined using the max. deviation from linear response applying rectangular distribution and is expressed for the square of the field value.

DASY/EASY - Parameters of Probe: EX3DV4 - SN:3722

Calibration Parameter Determined in Head Tissue Simulating Media

f (MHz) ^C	Relative Permittivity ^F	Conductivity (S/m) ^F	ConvF X	ConvF Y	ConvF Z	Alpha	Depth (mm)	Unct. (k=2)
900	41.5	0.97	8.59	8.59	8.59	0.26	1.12	± 12.0 %
1810	40.0	1.40	7.44	7.44	7.44	0.49	0.72	± 12.0 %
2000	40.0	1.40	7.38	7.38	7.38	0.59	0.65	± 12.0 %
2450	39.2	1.80	6.72	6.72	6.72	0.34	0.86	± 12.0 %
5200	36.0	4.66	4.96	4.96	4.96	0.30	1.80	± 13.1 %
5300	35.9	4.76	4.66	4.66	4.66	0.35	1.80	± 13.1 %
5500	35.6	4.96	4.58	4.58	4.58	0.40	1.80	± 13.1 %
5800	35.3	5.27	4.37	4.37	4.37	0.40	1.80	± 13.1 %

^C Frequency validity of ± 100 MHz only applies for DASY v4.4 and higher (see Page 2), else it is restricted to ± 50 MHz. The uncertainty is the RSS of the ConvF uncertainty at calibration frequency and the uncertainty for the indicated frequency band.

^F At frequencies below 3 GHz, the validity of tissue parameters (ϵ and σ) can be relaxed to ± 10% if liquid compensation formula is applied to measured SAR values. At frequencies above 3 GHz, the validity of tissue parameters (ϵ and σ) is restricted to ± 5%. The uncertainty is the RSS of the ConvF uncertainty for indicated target tissue parameters.