



Intelligent Digital Doorlock

The safety section of this manual contains important information to ensure the user's safety and prevent potential damage to property. Please read this section carefully and use the product accordingly.

EZON
SHS-3120



Product Features



The door can be opened with a card.

The door can be opened with a card fit for support standard as well as a card contained in the product (Support for the ISO14443A–Type, Up to 70 including the password can be registered).



The door can also be opened with a password.

Once the user's password is registered, the door can be opened without a key by entering the registered password. (Up to 70 including cards can be registered)



The door does not have to be locked manually.

Using the automatic locking function, the door is automatically locked when it closes, eliminating the need to lock it manually.



Double locking function adds security.

The double locking function adds security by preventing the door from being opened from outside at night or at times when extra security is needed.



Pranks played by children and juveniles can be prevented.

When an unregistered card is used, or when an invalid password is entered 5 or more times consecutively, an alarm sound is generated and power to the lock is automatically cut off for three minutes.

Table of Contents

Product Features	1
-------------------------	----------

Safety Cautions	4
------------------------	----------

Notes before Operation	7
-------------------------------	----------

Product Components.....	7
Outdoor Unit Parts.....	8
Indoor Unit Parts.....	9
Replacing the Batteries.....	10
Using the Emergency Battery.....	11
Setting the Left Hand/Right Hand.....	12

Basic Functions	13
------------------------	-----------

Initialization (Master Password, Password and Card).....	13
Master Password Registration and Change.....	14
Password Registration.....	15
Card Registration.....	17
Deleting the Card and Password Individually.....	19
Opening the Door from Outside with a Master Password or a Password.....	20
Opening the Door from Outside with a Card.....	21
Opening/Locking the Door from Inside.....	22
Locking the Door from Outside.....	22

Additional Functions 23

Double Security Mode Setting23

Automatic/Manual Locking Setting.....24

Sound Setting and Releasing25

Alarm Sound/Emergency Sound26

Troubleshooting 29

Operating Method Summary 31

Product Specifications 33

User Code Registration Table 34

Safety Cautions

This section contains important information to ensure the user's safety and prevent potential damage to property. Please read this section carefully and use the product accordingly.

Warning, Caution and Note Explained:



Warning

Warning

Information given under this heading is information the user must be aware of to prevent physical harm.



Caution

Caution

Information given under this heading is information the user must be aware of to prevent service problems or system damage.



Note

Note

Information given under this heading provides additional information relating to the text in this manual.

Description of Symbols



General warning or caution.



Prohibited activity.



Recommended activity.

Cautions during Installation

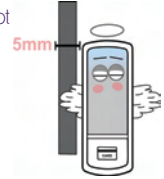


The user shall not install or repair the product without authorization. The manufacturer does not assume the responsibility for damage to the product resulting from attempts to the user to install or repair it without authorization.



Do not install the product in the place where the gap between the door and the frame is 5mm or more.

If the gap is too wide, the product may not function properly.



Cautions during Operation



Make sure that no unauthorized person has the access to the password. To minimize the risk of burglary, it is recommended that you periodically change the password.



Do not operate the product with wet hands, and keep liquids such as water or drinks away from the product, or the product may malfunction or be damaged.



Do not use the excessive force or sharp objects to push the door lock buttons, as this can damage the product.



Make sure that the door is completely closed when going outside.

The manufacturer does assume the responsibility for any harm caused by engagement of the lock on an improperly closed door.



Cautions during Repair or Maintenance



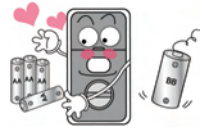
Be sure to correctly match the poles (+/-) when installing the batteries. Install the batteries with the correct poles (+/-).

Improperly installed batteries can cause rupture or battery fluid leakage.



Replace all batteries immediately after they run out of power, and never mix new batteries with used ones.

This can cause reduction of product life or a malfunction in the product.



Do not use water, benzene or alcohol when cleaning the product, as these fluids can cause product malfunction.

Use a soft and dry cloth instead.



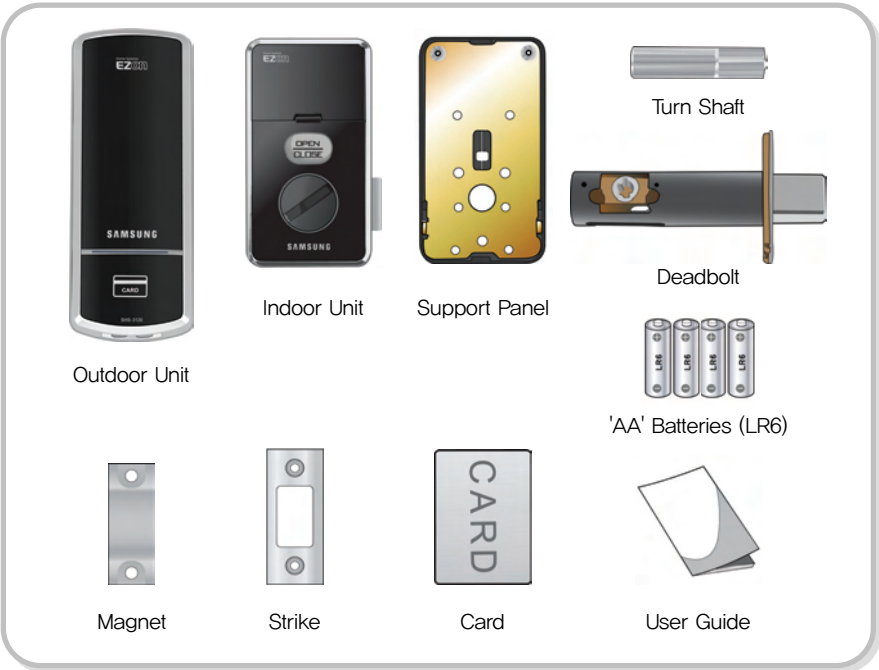
Replace the batteries within 1 week after the battery replacement alarm sounds.

The product can stop operating if the batteries are not replaced in time.



Notes before Operation

Product Components



No.	Screw	Quantity	Description
1	FH+ M5 x 20	3	Out Housing + Plate In Fastening
2	OH+ M4 x 22	2	Out Housing + Deadbolt + Plate In Fastening
3	FH+ T4 x 25	5	Plate In + Wooden Door Fastening
4	FH+ M3 x 6	4	In Housing + Plate In Fastening
5	FH+ U10-24 x 9	4	Deadbolt, Striker, Iron Door Fastening
6	FH+ T4 x 15	4	Deadbolt, Striker, Wooden Door Fastening



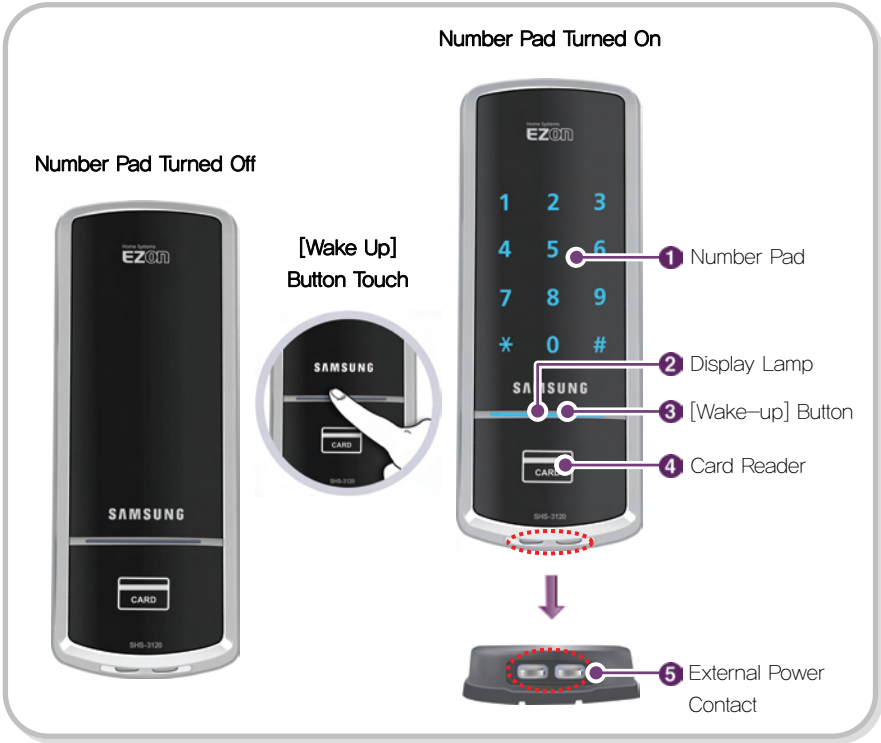
Note

The product components used may vary depending on the installation environment.



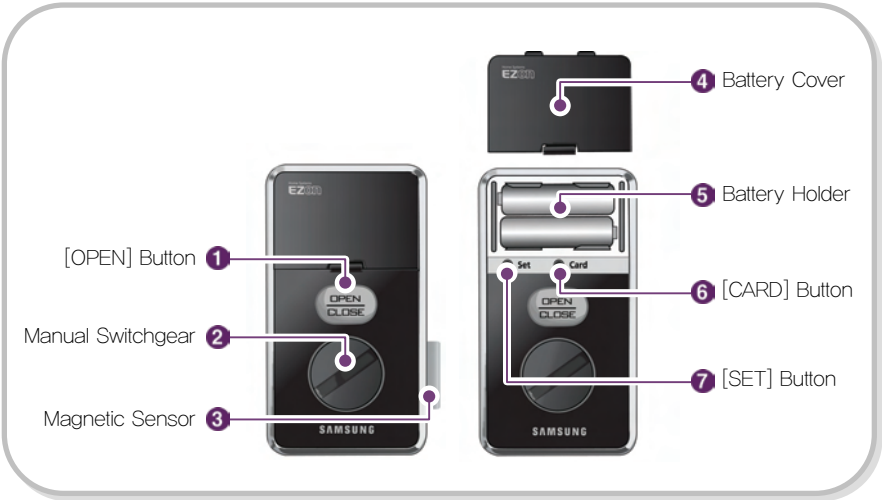
Introduction

Outdoor Unit Parts



No.	Name	Description
1	Number Pad	This is used to enter the numbers when registering, changing or deleting the password. Once registered, users can open the door by entering the registered password.
2	Display Lamp	This lamp displays how the doorlock operates, including reading a card.
3	[Wake-up] Button	This button is used to recognize a card, entering a password, or finishing the registration mode.
4	Card Reader	The Card Reader is used to recognize a registered card before opening the door. Touch the [Wake Up] button to operate the Card Reader.
5	External Power Contact	Power can be supplied from the emergency battery after the main batteries have been completely discharged (9V battery).
6	Reset Button	This button is used to reset the unit when it stops operating. The registered data are not deleted.

Indoor Unit Parts



No.	Name	Description
1	[OPEN] Button	This is one touch button used to open the locked door. (It is also used to lock the door from indoor in manual locking mode)
2	Manual Switchgear	The Manual Switchgear is used to open or lock the door when the batteries are completely discharged.
3	Magnetic Sensor	This senses door opening and closing.
4	Battery Cover	This cover protects the batteries, the [Set] button, and the [Card] button.
5	Battery Holder	This holds the batteries.
6	[CARD] Button	This is used to register a card or delete the password/card data.
7	[SET] Button	This is used to register the master password or change the password. It is also used to change the doorlock setting.

Replacing the Batteries

1. Battery Replacement Alarm Generation



If the melody of "Blues for Elise" sounds when opening the door using the password or a card, it is time to replace the batteries.



Battery Life

Although actual battery life differs depending on the manufacturer, date of production and operation environment, four 1.5V AA alkaline batteries can last for one year, based on an average of 10 uses per day.

2. Opening the Indoor Unit Cover



Press on the hook at the bottom of the battery cover on the indoor unit and pull the cover upward.

3. Replacing the Battery



4 AA batteries

Replace all 4 batteries within a week of the first alarm sound.

– The unit will stop operating if the batteries are not replaced.



Caution

- If the poles of the batteries are not placed properly, the door lock will not operate normally.
- Liquid leaks from batteries can damage the product. Check the batteries regularly (once every 6 months).
- After the battery replacement melody has sounded, password/card information cannot be registered, changed, deleted, initialized or configured until the batteries are replaced.

Using the Emergency Battery

1. When Lock Fails to Operate Due to Discharged AA Batteries

If the batteries are not replaced after their replacement time comes, they will be completely discharged and the door lock will not operate.



Recognition of a Card

Or



Password Entry



The door is not opened.

2. Using 9V Battery



Buy an emergency battery (9V) at the nearest store.



Caution

As the alkaline batteries offer longer life, they are recommended over the manganese batteries or rechargeable ones.

3. Opening the Door Using the Emergency Battery



Or

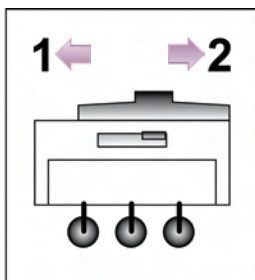


Place the card on the card reader, or enter the password, while the 9V battery is connected to the external power contact of the outdoor unit.

Setting the Left Hand/Right Hand

The opening or locking direction may change depending on the location in which the unit is installed.

Adjust the [Left Hand/Right Hand] switch according to the location of the outdoor unit before installing the indoor unit.



Left Hand Setting
Set the switch to 2.

Right Hand Setting
Set the switch to 1.

Status of Left Hand/Right Hand

Left Hand



The doorlock is installed on the right of the door when it is viewed from outside.

Right Hand



The doorlock is installed on the left of the door when it is viewed from outside.

Basic Functions

This section describes the ways to initialize the information registered in the door lock, to register the password and card data, and to open or close the door.

Initialization (Master Password, Password and Card)

All registered data (master password, password and card) are deleted. After initialization, the master password is set to '1234', and the registered password and card data are all deleted.



Note

After initializing the registered data, reregister the card and password. Initialization is available while the door is open.



1. Opening the Cover (from inside)



Open the battery cover on the indoor unit.

2. Pressing the [Set] Button (from inside)



Press and hold the [Set] button for 10 seconds or longer.

– Successful: "Toot—>Toot, toot—>Toot, toot, toot, toot" sounds are generated.

3. Entering the Master Password (from outside)



Enter the master password (press 1234 when initialized), and then press the [*] button.

– Successful: "Too~~~~t" sound is generated.
– Failed: "Toot~" sound is generated.

Master Password Registration and Change

The master password can be 4~12 digit number. Only one password can be registered. Please register a new master password after initialization.



Note

Registering or changing the password is available while the door is open.

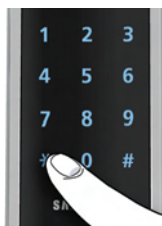
Pressing the [Set] Button (from inside)



Speaker icon: Toot → too, toot

Open the battery cover of the indoor unit and press the [Set] button for 5 seconds.

2. Entering the Previous Master Password (from outside)



Speaker icon: Successful: Toot~~~~, toot, toot
Failed: Toot~, toot, toot

Enter the current password ('1234' after initialization) and press the [*] button.

3. Entering a New Password (from outside)



Speaker icon: Successful: Toot~~~~
Failed: Toot~

Enter a new master password and press the [*] button.

– To prevent burglary, it is recommended to use a password of 6 digits or longer. (Only numbers between 0 and 9 can be used.)

Password Registration

The password can be 4~12 digit number. Up to 70 including cards can be registered. Please register a new password after initialization.



Note

- The 70 user codes are allocated to register the password and card information.
- It is required to enter the user code of the registered password or card information to be deleted in order to delete it. Make sure to manage the user code well when registering the password or card information.
- Registering the password is available while the door is open.



1. Pressing the [Set] Button (from inside)



Open the battery cover of the indoor unit and briefly press the [Set] button.

2. Entering the Master Password (from outside)



Successful: Toot~~~~t, toot, toot
Failed: Toot~~~

Enter the master password when the number pad is lighted and press the [*] button.

3. Entering the User Code (from outside)



Successful: Toot, toot
Failed: Toot~~~

Enter the user code (1 to 70) of the password to be registered and press the [*] button.

- The already registered code is not available.

4. Entering a New Password (from outside)



Successful: Tooooo~
Failed: Toot~

Enter a new password (4 to 12 digits) and then press the [*] button.

- To prevent burglary, it is recommended to use a password of 6 digits or longer. (Only numbers between 0 and 9 can be used.)

5. Registering in Series and Terminating



Repeat the Steps 3 and 4 to register additional passwords.

- Press the [Wake Up] button to terminating registration.

6. Checking New Password Operation (from outside)



Tooooo~

To make ensure the password has been properly registered, check the new password and close the door.

- Please refer to "Opening the Door from Outside with a Master Password or a Password" on page 20.



Caution

- Manage your password with care so that unauthorized people will not have access to it. Regularly changing your password can reduce the risk of it being leaked.
- Check if the new password works properly while the door is open. When the door opening sensor is pressed and the deadbolt comes out, refer to "Opening the Door from Outside with a Password".

Card Registration

The door can be opened with the dedicated card contained in the product or the ISO 14443A–Type card. Up to 70 including the password can be registered. (Support for ISO14443A Type)

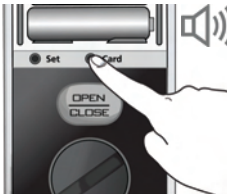


Note

- The 70 user codes are allocated to register the password and card information.
- It is required to enter the user code of the registered password or card information to be deleted in order to delete it. Make sure to manage the user code well when registering the password or card information.
- Registering the card is available while the door is open.



1. Pressing the [Card] button (from inside)



Toot → toot, toot

Open the battery cover of the indoor unit and briefly press the [Card] button.

2. Entering the Master Password (from outside)



Successful: Toot~~~~t, toot, toot
Failed: Toot~~~

Enter the master password when the number pad is lighted and press the [*] button.

3. Entering a User Code (from inside)



Successful: Toot, toot
Failed: Toot~~~

Enter the user code (1 to 70) of the card to be registered and press the [*] button.
– The already registered code is not available.

4. Placing the Card in Contact (from outside)



Place the card to be registered on the card reader.

5. Registering in a Series and Terminating



Repeat the Steps 3 and 4 to register additional cards.

- Press the [Wake Up] button to terminating registration.

6. Checking Card Registration (from outside)



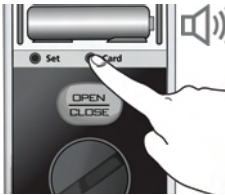
Press the [Wake Up] button and then put the card on the card reader.

- Please refer to "Opening the Door from Outside with a Card" on page 21.

Deleting the Card and Password Individually

Registered cards or passwords can be individually deleted.

1. Pressing the [Card] Button (from inside)



Speaker icon: Toot → Toot, toot

Open the battery cover of the indoor unit and press and hold the [Card] button for 5 seconds.



2. Entering the Master Password (from outside)



Speaker icon: Successful: Toot~~~~t, toot, toot
Failed: Toot~~~

Enter the master password and press the [*] button.

3. Entering the User Code (from outside)



Speaker icon: Successful: Toot~~~~t
Failed: Toot~~~

Enter the user code (1 to 70) of the password or card to be deleted and press the [*] button.

– The code that is not registered is not deleted.



Note

- Check the user code of the password or card information to be deleted before deleting it.
- Deleting the card is available while the door is open.
- The door cannot be opened with the deleted password or card.

Opening the Door from Outside with a Master Password or a Password



Note

The double security mode is set when the product is purchased. Please refer to "Double Security Mode Setting" on page 22 to change the double security mode to the common security mode.

1. Pressing the [Wake Up] button



Press the [Wake Up] button.

2. Entering the Password

Double Security Mode



When any two number buttons are lighted, press the buttons one by one.



Successful: Too~~~~t
Failed: Toot~

Enter the password and press the [*] button when all the numbers on the pad are lighted.

Common Security Mode



Successful: Too~~~~t
Failed: Toot~

Enter the password and press the [*] button when all the numbers on the pad are lighted.



Note

- The password must be entered while the number pad is lighted. If the light is turned off, press the [Wake Up] button and reenter the password.
- If the wrong password is entered, press the [#] button to cancel the entry and start from the beginning.
- If the wrong password is entered 5 times in a row, a "too~t too~t too~t" alarm will sound for 10 seconds and the door lock will stop operating for 3 minutes. While the door is in this inactive mode, a single "toot" sound is generated every 10 seconds and eight consecutive "toots" will sound after 3 minutes. Following this, the lock is released from inactive mode

Opening the Door from Outside with a Card

The door can be opened from outside using a card. Press the [Wake Up] button and place the registered card on the card reader.

Placing the Card

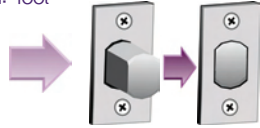


Pressing the [Wake Up] button.



Place the card on the card reader.

Successful: Toot~
Failed: Toot~



The door will be opened after 1 second.



Note

- The card reader will operate properly when the card is placed within 20mm of the card reader.
- The recognition distance may differ depending on the card manufacturer.
- A "toot~" alarm sound is generated when an unregistered card is placed or the card is not recognized.

Opening/Locking the Door from Inside

Opening the Door Automatically



Press the [OPEN] button in the indoor unit to open the door when it is locked.

Locking the Door Automatically



Press the [OPEN] button to lock the door when it is closed in Manual Locking mode.

Opening the Door Manually



Turn the manual switchgear to open the door while the door is locked.

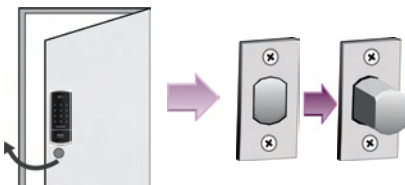
Locking the Door Manually



Turn the manual switchgear to close the door while the door is opened.

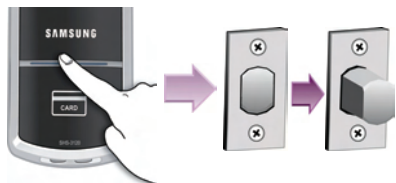
Locking the Door from Outside

In the Automatic Locking Mode



When the door is closed, the deadbolt comes out automatically after 2 seconds.

In the Manual Locking Mode



Press the [Wake Up] button while the door is closed.

Additional Functions

Double Security Mode Setting

When you open the door using a password, you can set an authentication mode.

Briefly press the [Set] button on the indoor unit.

Press the [7] or [9] buttons, and then press the [*] button to set an authentication mode.



Note

Double Security Mode

- This can prevent the password from being exposed by pressing any two numbers for authentication before pressing the password.



Note

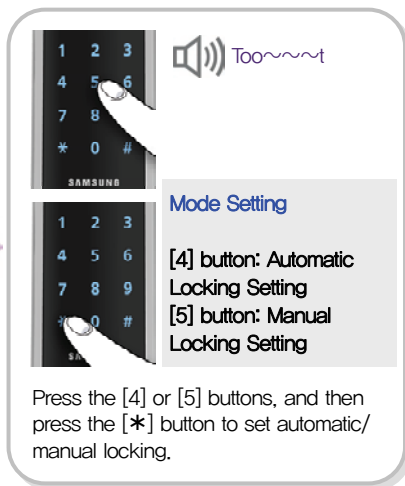
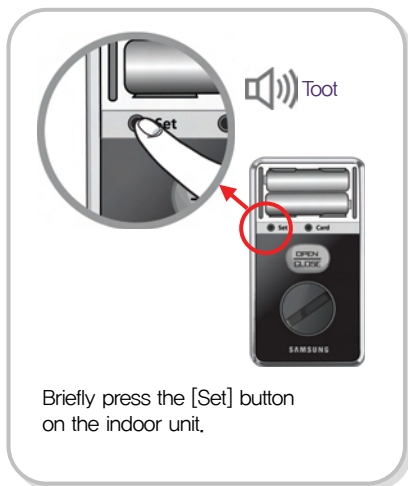
- Setting the Double Security Mode is available while the door is open.
- The double security mode is set when the product is purchased.



Advanced

Automatic/Manual Locking Setting

Automatic locking mode allows for automatic locking of the door when it is closed. The automatic locking mode is set when the product is purchased.



Difference between Automatic and Manual Modes

- Automatic Mode: The door is automatically locked 2 seconds after being closed. This mode is not activated when a magnet is not used or the batteries are completely discharged.
- Manual Mode: The door is not automatically locked after being closed. It is locked only when the [Wake Up] button or the [OPEN] button of the indoor unit is pressed.



Caution

For security reasons, ensure that the door is locked after locking the door in Manual Lock mode, since it is not automatically locked after being closed.



Note

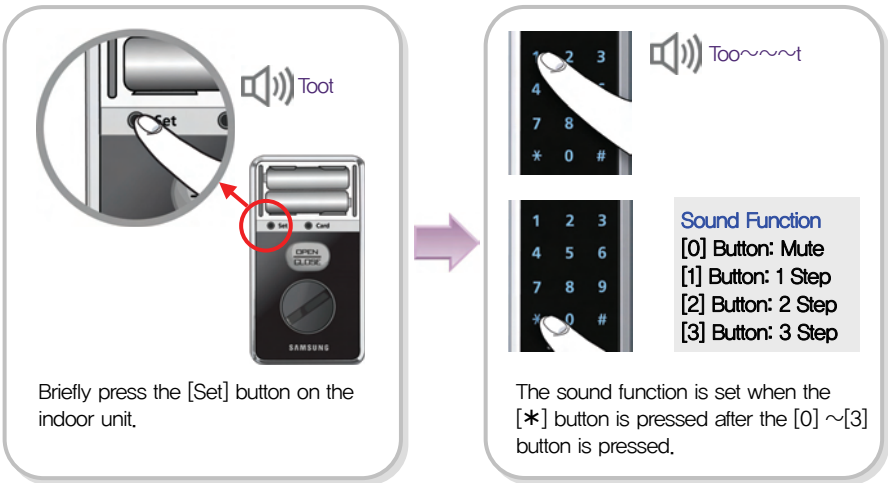
- The door is automatically locked again if the closed door is not opened within 7 seconds of being unlocked using the password or card.

Sound Setting and Releasing

The sound that is generated when the number buttons are pressed, when the door is locked, or when the locked door is unlocked, can be set according to the user's preference.

Sound Function Setting

The product is set to generate all sounds at the factory. (Set in 2 steps)



Briefly press the [Set] button on the indoor unit.

The sound function is set when the [*] button is pressed after the [0] ~ [3] button is pressed.

Sound Function
[0] Button: Mute
[1] Button: 1 Step
[2] Button: 2 Step
[3] Button: 3 Step



Sound Function Operation

- [0] Button: All sounds except the alarm sound are deactivated.
- [1]~[3] Button: All sounds are activated and the sound gets louder as the step goes up.
- In registration mode, sound is generated regardless of the current setting. The setting is in effect when registration is completed.
- The sound function is set in two steps after initialization.

Alarm Sound/Emergency Sound

Alarm Sound (Prank Prevention Function)

This function generates an alarm sound and deactivates door lock operation when it is improperly handled from outside.

Card or Password Error

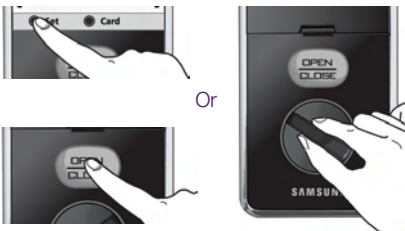


This alarm will sound if an attempt is made to open the door with an unregistered card, or if a wrong password is entered five times in a row.

(The alarm sound is generated, and the door lock is deactivated for 3 minutes. While the door is in this inactive mode, a single "toot" sound is generated every 10 seconds and eight consecutive "toots" will sound after 3 minutes. Following this, the lock is released from inactive mode.)

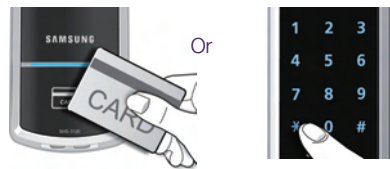
Releasing the Alarm

[Inside]



Press the [Set] button, the [Card] button or the [Open] button on the indoor unit, or turn the manual switchgear.

[Outside]



Place the registered card to the card reader, or enter the password.

(The alarm must be released within 10 seconds of its activation.)

Setting the Security Function

This function prevents intrusion from outside while the residents are out. Once set, it generates an alarm sound when the door lock is operated from inside.

Setting the Security Function

Press and hold the [Wake Up] button on the outdoor unit while the door is locked.

Press and hold the [#] button on the outdoor unit for 3 seconds.

Enter the master password or password and press the [*] button to set the security function.



Note

The security function is automatically released when the locked door is opened from outside by entering the registered password or placing the card to the card reader.

Activating the Security Function

[Inside]

Toot~, toot~, toot~
(for 5 minutes)

This alarm sounds if the [OPEN] button is pressed, or the manual switchgear is turned while the security function is being activated.

Releasing the Security Function

[Outside]

Or

Expose the registered card to the card reader, or enter the password, and then press the [*] button.

EZON



Advanced

Double Locking

The double locking function prevents opening of a locked door from outside.

Setting Double Locking

[Inside]



Press the [Open] button on the indoor unit for 5 seconds while the door is locked.

Activating Double Locking

[Inside]



[Outside]



The alarm sound is generated when the [Card] button and the [Set] button are pressed from inside while the double locking function is set.

When the [Wake Up] button is pressed, the door cannot be opened while the alarm sound is generated.

Releasing Double Locking

[Inside]



Press the [Open] button on the indoor unit.



Turn the manual switchgear.



Caution

Please be cautious since the door cannot be opened from outside when this function is set. Particularly be careful of children accidentally setting this function from inside.

Troubleshooting

Please refer to the following if the door lock does not operate properly.
If the problem can still not be solved, contact the nearest service center.



Power Source

Problem	Solution	Remark
There is no power.	<ul style="list-style-type: none"> – Check to ensure the batteries are in good condition, with the poles (+/–) correctly placed. – Check to see if the batteries are discharged, or have been inserted improperly. 	P. 10~11



Master Password/Password/Card

Problem	Solution	Remark
The master password cannot be changed.	<ul style="list-style-type: none"> – This may be a case of delayed password change. The password must be changed while the number pad is illuminated. Furthermore, the new password must be entered within 10 seconds of entering the previous one. – Replace the batteries if they are discharged. – Repeat the procedure again, referring to "Master Password Registration and Change" in the user guide. 	P. 14
The password cannot be registered.	<ul style="list-style-type: none"> – The code to be registered has another information. Try again after changing the user code. – Check if the password has 4–12 digits. 	P. 15~16
The card cannot be registered.	<ul style="list-style-type: none"> – The code to be registered has another information. Try again after changing the user code. – Place the card to be registered within 10 seconds of entering the user code. 	P. 17~18
The door cannot be opened even after entering the password followed by the [*] button.	<ul style="list-style-type: none"> – Check that the registered password has been correctly entered. – If number buttons are not lighted while the password is being entered, then the entry will not be accepted. Reenter the password from the beginning when the number pad is lighted after pressing the [Wake Up] button. (The light on the number pad is automatically turned off if an entry is not initiated within 5 seconds.) 	P. 20
The door cannot be opened with the card.	<ul style="list-style-type: none"> – This may be a case of an unregistered card, or of the card not being recognized. Register the card and try to open it again. – The card must be properly placed on the card reader. 	P. 21



Problem	Solution	Remark
The door cannot be opened with the password or card.	– The door cannot be opened from the outside using the password or card if the double locking function has been activated. A "too~t, too~t" sound is generated if the [Wake Up] button is pressed when the double locking function is activated.	P. 28
The password or card registration data can be verified, but the door cannot be opened.	This could be a malfunction of the door lock. Please call the nearest service center.	–



Automatic Locking

Problem	Solution	Remark
The door does not lock automatically after being closed.	<ul style="list-style-type: none"> – Check to ensure that Automatic Locking mode has been set. If the operation mode is set to Manual Locking, touch the [Wake Up] to lock the door. – If the door does not automatically lock when in Automatic Locking mode, then the door lock is installed improperly. Contact the digital door lock distributor to have it reinstalled. – The automatic locking function will not work if the batteries are completely discharged. Check the batteries. 	P. 24



Alarm Sound

Problem	Solution	Remark
The "too~t, too~t" alarm sound is generated when the [Wake Up] button is pressed.	The alarm sound is generated if the [Wake Up] button is pressed while the double locking function is activated. Release the double locking function before using the door lock.	P. 28
A strange sound (melody of "Blues for Elise") occurs when the door lock operates.	It is notifying you that the batteries need to be replaced. Please change the batteries within 1 week.	P. 10






Malfunction

Problem	Solution	Remark
There's no response when the [Wake Up] button is pressed.	<ul style="list-style-type: none"> – Press the hole on the right side of the external power contact on the outdoor unit with a pin. – If there's still no response after taking the measures above, please call the nearest service center 	–

Operating Method Summary

※ Initialization, registration, change and deletion are available while the door is open.

Function	Default	Setting or Releasing (Press the buttons in the given order.)
Initialization (Password and card all deleted.)	-	Press and hold the [Set] button ● for 10 seconds → Enter the current password → [*] button ※ The master password is set to '1234' after initialization.
Master Password Registration/ Change	'1234'	Press and hold the [Set] button ● for 5 seconds → Previous master password entry + [*] button → New master password entry + [*] button
Password Registration	None	Press and hold the [Set] button ● → Master password entry + [*] button → User code entry + [*] button → New password entry + [*] button
Card Registration	None	Press and hold the [Card] button → Master password entry + [*] button → User code entry + [*] button → Card recognition
Password/Card Deletion	None	Press and hold the [Card] button for 5 seconds → Master password entry + [*] button → User code to be deleted entry + [*] button
Opening the Door from Inside	-	Automatic Mode: Press the [Open] button while the door is locked → The door opens. Manual Mode: Turn the manual switchgear → The door opens
Closing the Door from Inside	-	Automatic Mode: Press the [Open] button while the door is opened → The door locks. Manual Mode: Turn the manual switchgear → The door locks
Opening the Door from Outside	Double Security Mode	Card: Press the [Wake Up] button → Place the card to the reader within 5 seconds Password: Press the [Wake Up] button → Enter any two numbers → Enter the password → [*] button
Closing the Door from Outside	Automatic Locking	Automatic Locking: Close the door. Manual Locking: Press the [Wake Up] button.
Double Security Mode Setting	Double Security Mode	Press the [Set] button ● → Press [7] or [9] button, + [*] button
Automatic/Manual Locking Setting	Automatic Locking	Press the [Set] button ● → Press [4] or [5] button + [*] button.
Sound Setting/Releasing	2 Steps	Press the [Set] button ● → Press [0], [1], [2], or [3] + [*] button

Function	Default	Setting or Releasing (Press the buttons in the given order.)
Security Function Setting	–	Press the [Wake Up] button, and press and hold the  button for 3 seconds while the door is locked → Password entry +  button
Security Function Release		Enter the password or place the card.
Emergency Sound Deactivation from Inside	–	Press the [Set] button  or the [Card] button.
Emergency Sound Deactivation from Outside	–	Enter the password or place the card.
Double Locking Setting	–	Press and hold the [Open] button for 5 seconds while the door is locked.
Double Locking Release	–	Press the [Open] button or turn the manual switchgear.

Product Specifications

Item	Specifications	
Voltage	4 AA Alkaline 1.5 Batteries (LR6) (6V)	
Emergency Power Source	1 9V Battery (6LF22) (Separately purchased)	
Operating Method	Electronic Control Method (Password entry or card reading)	
Weight	1.8Kg (including both indoor and outdoor units)	
Product Dimensions	Outdoor Unit	68.7 mm(W)×175.1 mm(H)×21.5 mm(D)
	Indoor Unit	69.9 mm(W)×128.0 mm(H)×40.5 mm(D)
	Card	85.5 mm(W)×54.0 mm(H)×0.9 mm(D)

The content of this manual is subject to change without prior notice to the user in order to enhance performance of the product.

FCC NOTICE

NOTE : This equipment has been tested and found to comply with the limits for a Class B digital device, pursuant to part 15 of the FCC Rules. These limits are designed to provide reasonable protection against harmful interference in a residential installation.

This equipment generates, uses and can radiate radio frequency energy and, if not installed and used in accordance with the instructions, may cause harmful interference to radio communications. However, there is no guarantee that interference will not occur in a particular installation. If this equipment does cause harmful interference to radio or television reception, which can be determined by turning the equipment off and on, the user is encouraged to try to correct the interference by one or more of the following measures:

- Reorient or relocate the receiving antenna.
- Increase the separation between the equipment and receiver.
- Connect the equipment into an outlet on a circuit different from that to which the receiver is connected.
- Consult the dealer or an experienced radio/TV technician for help.

CAUTION : Changes or modifications not expressly approved by the manufacturer responsible for compliance could void the user's authority to operate the equipment.



SCOMMTECH CO., LTD.

448-11, Seongneea-3dong, Kangdong-ku, Seoul, Korea

Post Code : 133-034

Phone : +82-2-2225-6709

Fax : +82-2-2225-6073

E-mail : sales.ezon@samsung.com

Homepage : www.scommtech.com