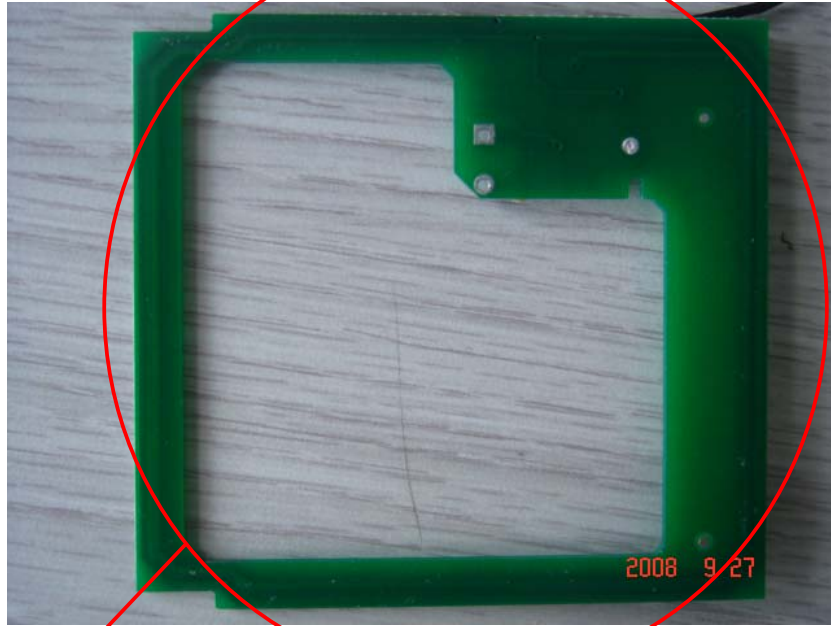


OPERATIONAL DESCRIDPTION

1. Supply voltage: 100-240~50/60Hz switching adapter
2. Frequency of operation: 13.56 MHz
3. Number of channels: 1
4. Antenna type: Printed Antenna with 0dBi gain
5. Introduction of the device: The device is a card reader.
6. Related antenna photo:



Antenna