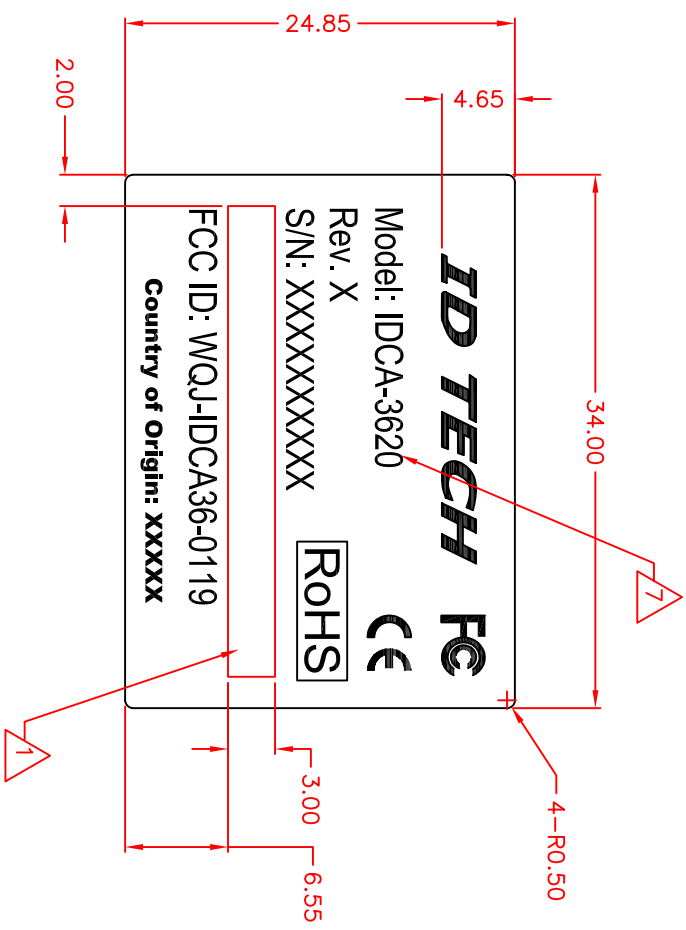


REV	ZONE	DESCRIPTION	DATE	APPROVED
50		PROTOTYPE RELEASE	12/11/08	



- 1. MATCHES THE MODEL NUMBER ON THE TITLE OF THE BOM.
- 2. USE LAB006.
- 3. PARTS/PROCESS MUST BE ROHS COMPLIANT.
- 4. THE REV MATCHES THE REVISION LETTER ON THE BOM.
- 5. ALL SERIAL NUMBERS MUST BE RECORDED SO THAT INDIVIDUAL UNITS CAN BE TRACED BACK TO A MANUFACTURING LOT.
- 6. SERIAL NUMBER IS TEN CHARACTERS, BEGINNING WITH A "T" IF THE UNIT ORIGINATED IN TAIWAN. (THERE IS NO "T" IF THE UNIT ORIGINATED IN THE U.S.). THE NEXT FOUR DIGITS ARE THE DATE CODE FOR YEAR AND WEEK. (YYYY AS IN 0324 FOR THE 24TH WEEK OF 2003.) THE LAST FIVE DIGITS ARE A SEQUENTIAL NUMBER BEGINNING WITH 00001.

NOTES: UNLESS OTHERWISE SPECIFIED.

UNLESS OTHERWISE NOTED: 1) DIMENSIONS ARE IN MILLIMETERS 2) TOLERANCES: XX ± .10 XX ± .10 ANGLES ± .00-30°		DATE: 04/16/07	
MATERIAL:		DRAWN BY: [Name]	
DO NOT SCALE DWG		CHECKED: [Name]	
ID TECH		TITLE: Print InstrID Label: Xpress Reader	
FILE NAME: 80082217-50.DWG		SCALE: X4	
REV: 50		SHEET 1 OF 1	