

Wireless (2.4GHz) 4D-Stick Mouse User's Guide

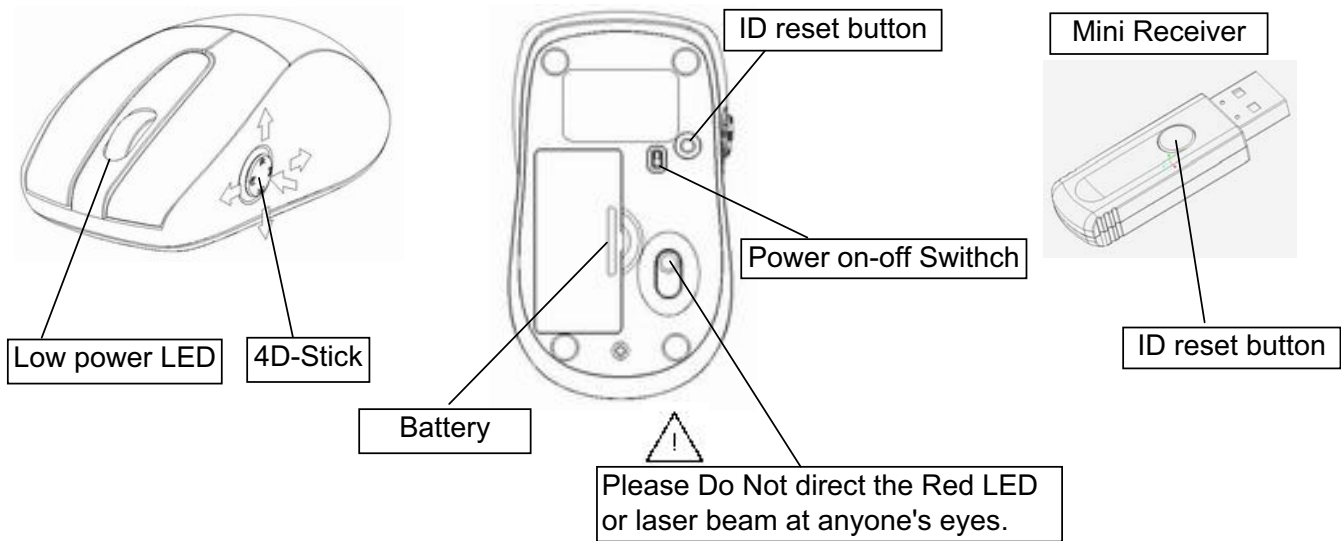
System requirements

- IBM or Compatible PC
- Windows2000/XP/Vista
- USB Port

Feature

- Optical sensor designed or Laser sensor designed
- Patented 4D-Stick design
- Auto Loaded Hot key function

Hardware Installation



1. Connect the Mini Receiver to the USB port

2. Insert the batteries

- 2-1. Open the battery compartment cover and install two AAA alkaline batteries as indicated by the polarity symbols (+/-), then close the cover.
- 2-2. Make sure the Power on-off switch at Mouse bottom is "ON".
- 2-3. The low power LED will blink 3 seconds if the mouse power is on or off

3. Auto Synchronization

The 2.4Ghz RF mouse features a dual-way transmission which enables the mouse and receiver for an auto communication, after the USB receiver is plugged to PC.

3-1. Auto-link mode

- Make sure to turn "ON" the Power on-off Switch..
- Wait for 2 sec. for auto link, then to move the mouse. Now the mouse and the receiver is auto-linked successfully.

3-2. Manual mode: If you find the communication channel is not working well, do the following steps to reset a new channel ID:

- Press ID reset button on receiver.
- Move the mouse or click mouse button, then ID links OK

Note: While the mouse is working and interference happens, the mouse and receiver will automatically source out a free channel and transfer to it. During the ID transfer, the cursor movement may have a second delay.

4. Power management

- 4-1. The unit offers a strong power saving management. Once the mouse goes to sleeping mode, click any button of the mouse to wake it up.
- 4-2. When the mouse is at battery low condition, the red Wheel LED will be flashing. Please replace a pair of new battery and follow the instruction of Point 2 and 3.

Operating instructions

1. It is the worldwide NO. 1 mouse with 4D-Stick function.
2. With software installation, the two major features of 4D-stick includes:
 - 2-1) Free button assignment for 4D-Stick at any applications.
 - 2-2) Mini tool bar assignment and free selection.

Software Installation

A. Un-install or remove the current mouse driver.

Before installing the driver of the mouse, we suggest to check if any other mouse driver was installed in your system, if yes, in order not to make conflict, please un-install or remove that driver.

B. Select setup.exe to install the driver from the CD.

The mouse features plug & play. It is not necessary to install the driver to operate the mouse. You may require the mouse driver to make the 4D stick function effective.

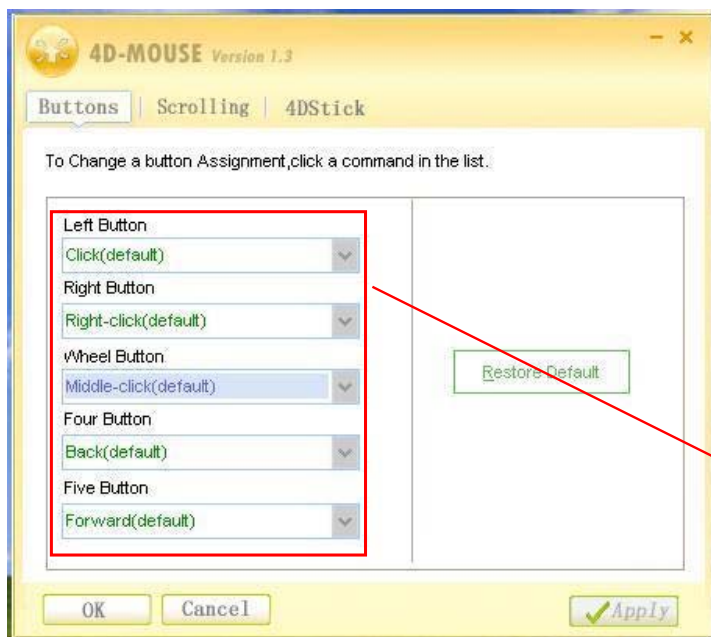
The Software Interface

A. Reboot the computer after software installation.

B. The software icon appears at the bar at right bottom, double click icon the Application program will pop up immediately.



1. Button Assignmnet



To change a button assignment, click and choose a command from the list.

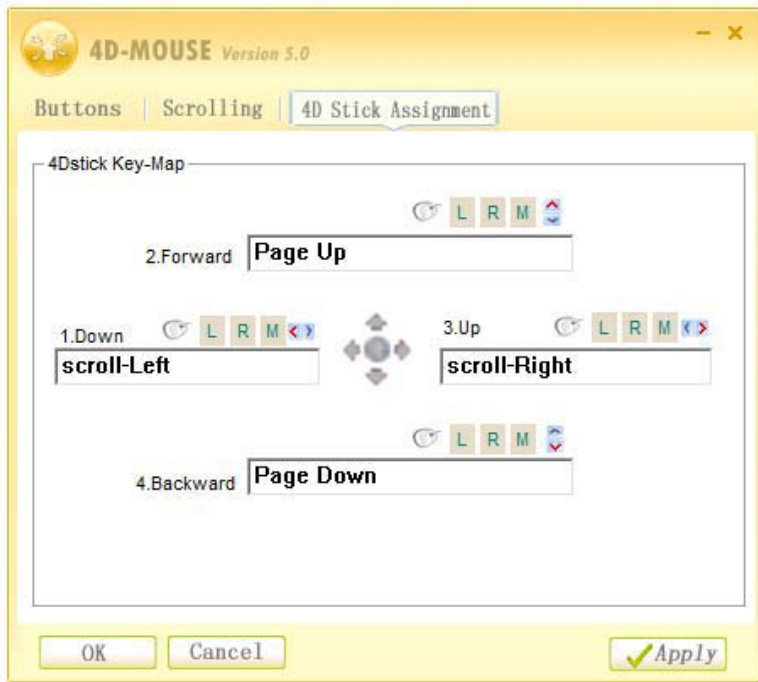
2 4D Stick

-- Button Assignment of 4 Directions --

4D Stick Key Map allows users to set Keyboard function, mouse function, or compound function at each direction button, each one button can save up to 4 combinations. Users can set different key assignments based on different Office Application uses, those assignments can be saved and accessed to the applications, therefore, the 4D Stick will work automatically as its set up once users open the

Default

The default functions of 4D Stick are "Page Up", "Page Down", "Scroll-Right" and "Scroll-Left", when users open any Office Application, it works as default until users set up their own button assignment.



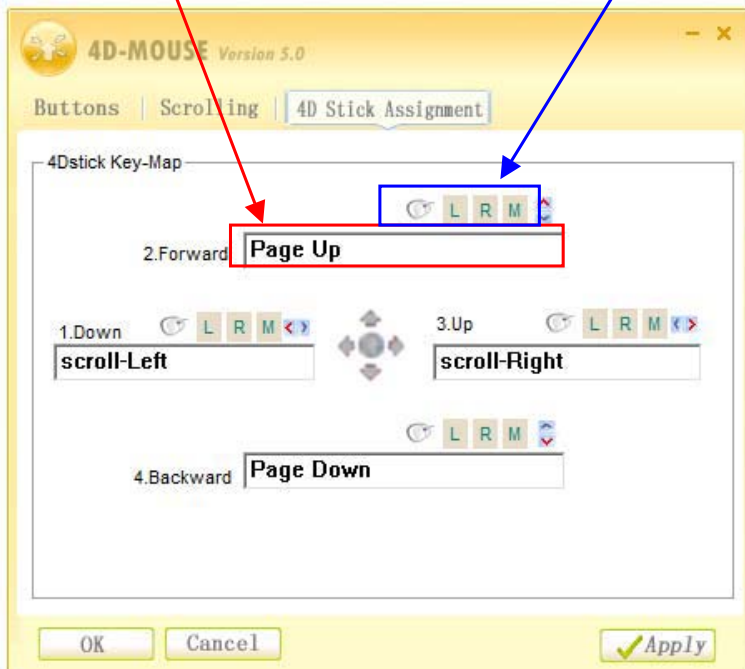
Application Name	.exe Format
Default	
Media Player	wmplayer.exe
Internet Explorer	iexplore.exe
Windows Picture...	explorer.exe

Assignment Access

If user would change the Default

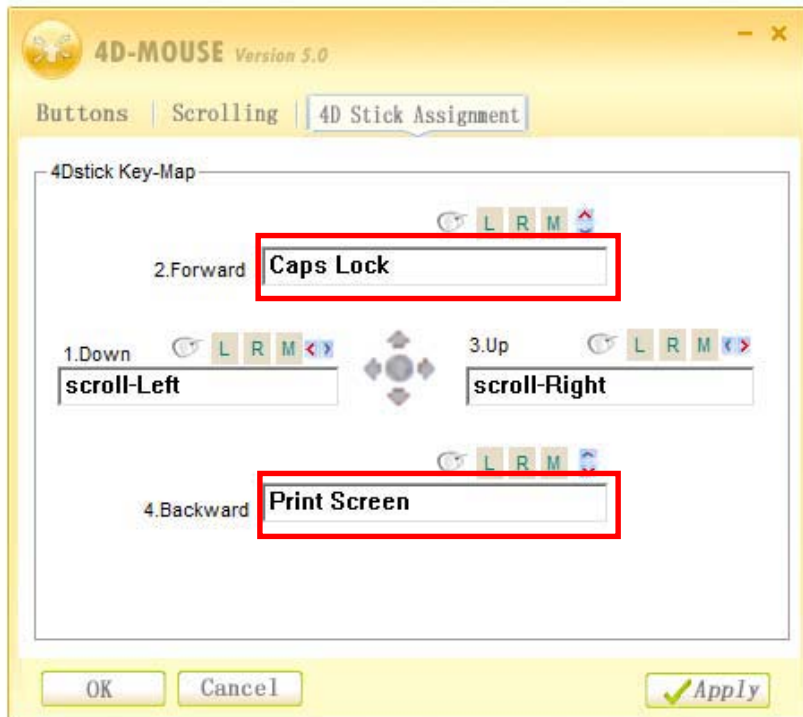
Users can key other commands directly to replace default "Page UP"

This means Mouse Left Button/ Right Button/ Wheel Button/ Scrolling or Tilt



Application Name	.exe Format
Default	
Media Player	wmplayer.exe
Internet Explorer	iexplore.exe
Windows Picture...	explorer.exe

For example: user may change the following command as default, so new default is as following:
 Button 2 is replaced by Caps Lock
 Button 4 is replaced by Print Screen



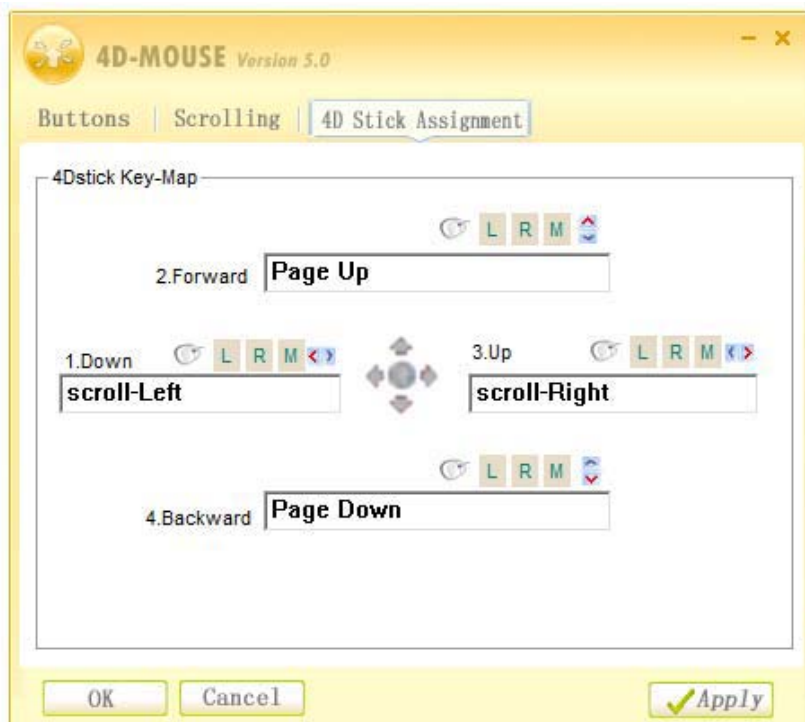
Application Name	.exe Format
Default	
Media Player	wmplayer.exe
Internet Explorer	iexplore.exe
Windows Picture...	explorer.exe

New Delete Modify Import Export

How to add new set-up on the application list?

For example, user would like to add iTunes, the 4 Direction Buttons will be set as:

- Button 1 is set "Ctrl+Left" for previous song
- Button 2 is set "Ctrl+UP" for Volume up
- Button 3 is set "Ctrl+Right" for next song
- Button 4 is set "Ctrl+Down" for Volume down



Application Name	.exe Format
Default	
Media Player	wmplayer.exe
Internet Explorer	iexplore.exe
Windows Picture...	explorer.exe

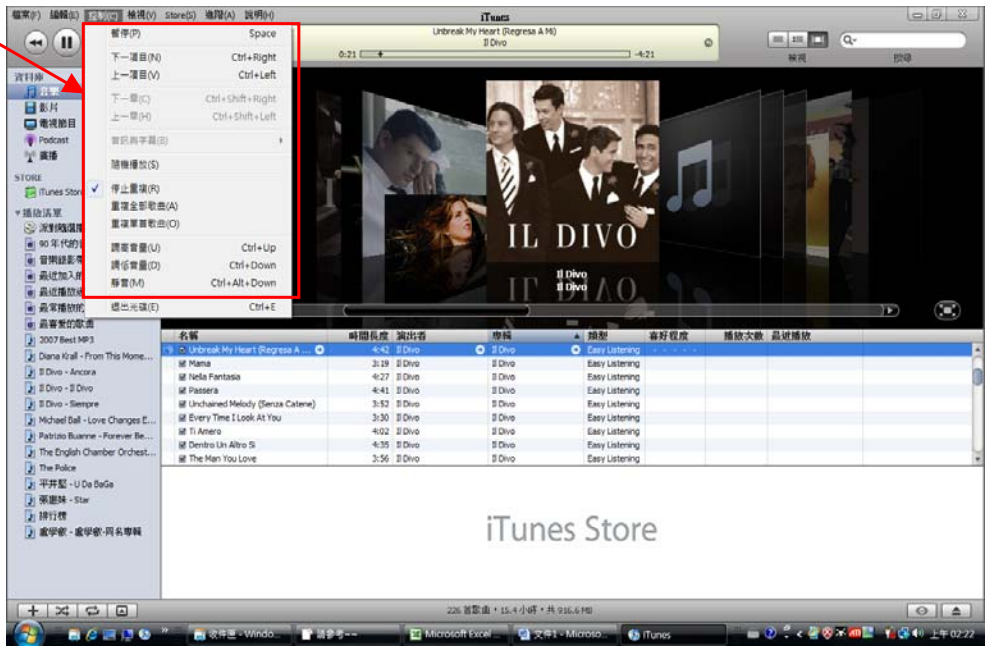
New Delete Modify Import Export

Want to add iTunes on this list.

Step 1

1. First of all, check the compound command you want to set up.

2. How to find out the compound command?
 - Check the tool bar from the application



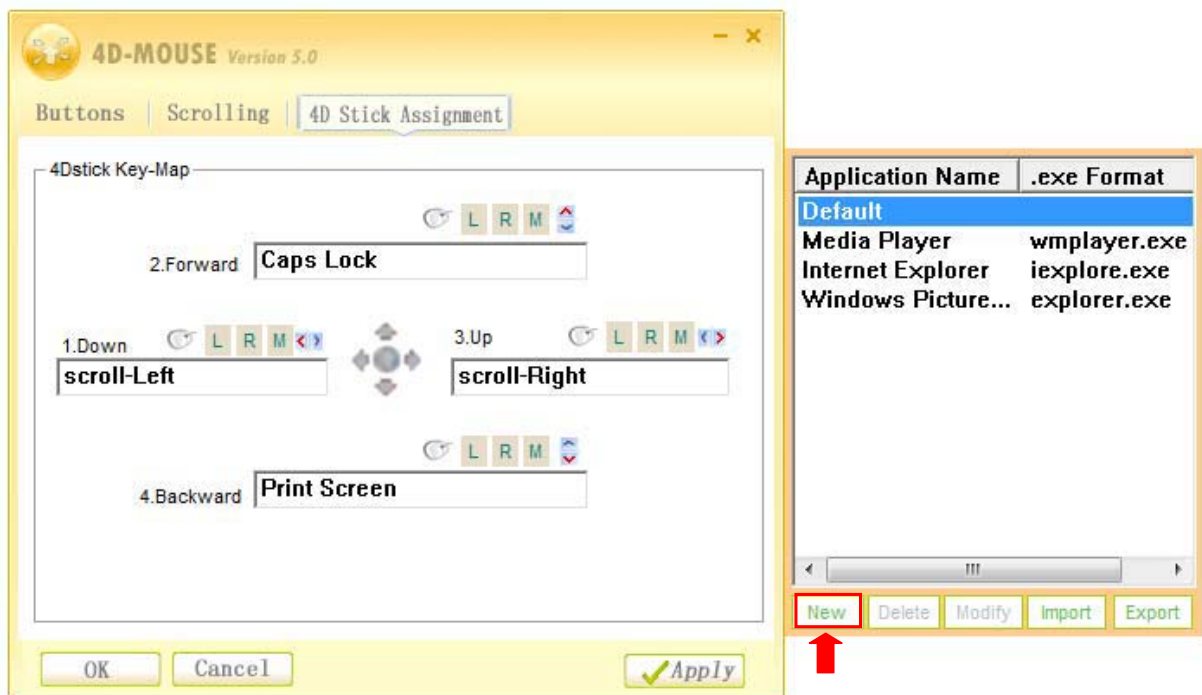
Step 2

Then key in the functions you need to set at each button, there can be up to 4 combinations to save for keyboard function, mouse function or compound at one button.

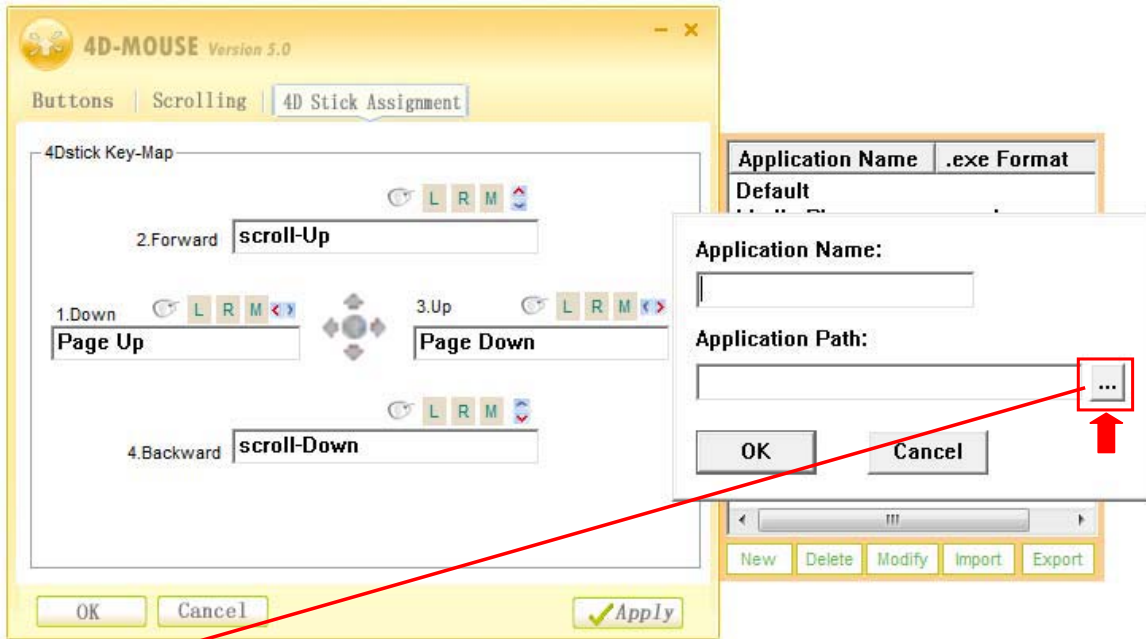
For example: L R M
 2.Forward **LCtrl + LShift + F + mouse-Left**

Step 3

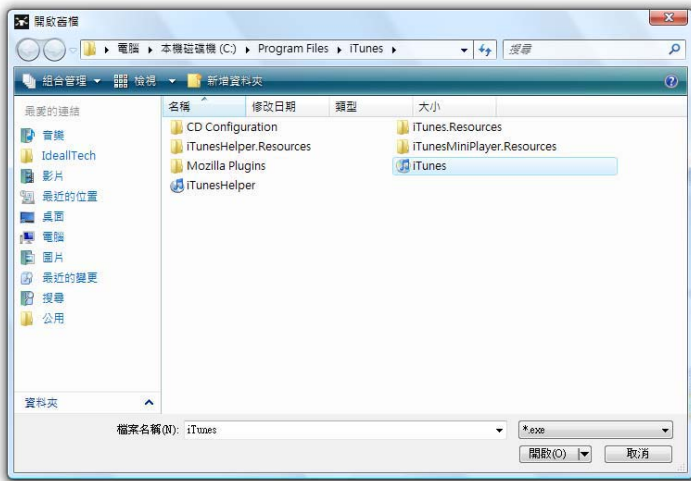
Click "New", the window to save to the application will pop up



Step 4

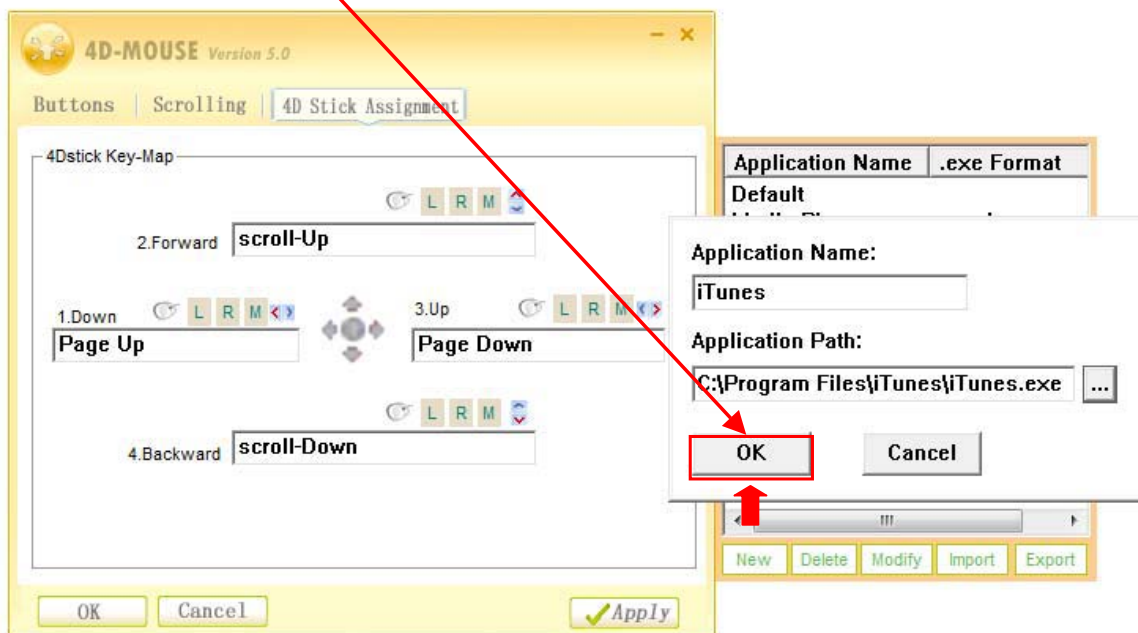


Click "...", you can select the application to be accessed from the pop-up window. Normally the application is at C Driver, for example, C:\Program Files\iTunes\iTunes.exe



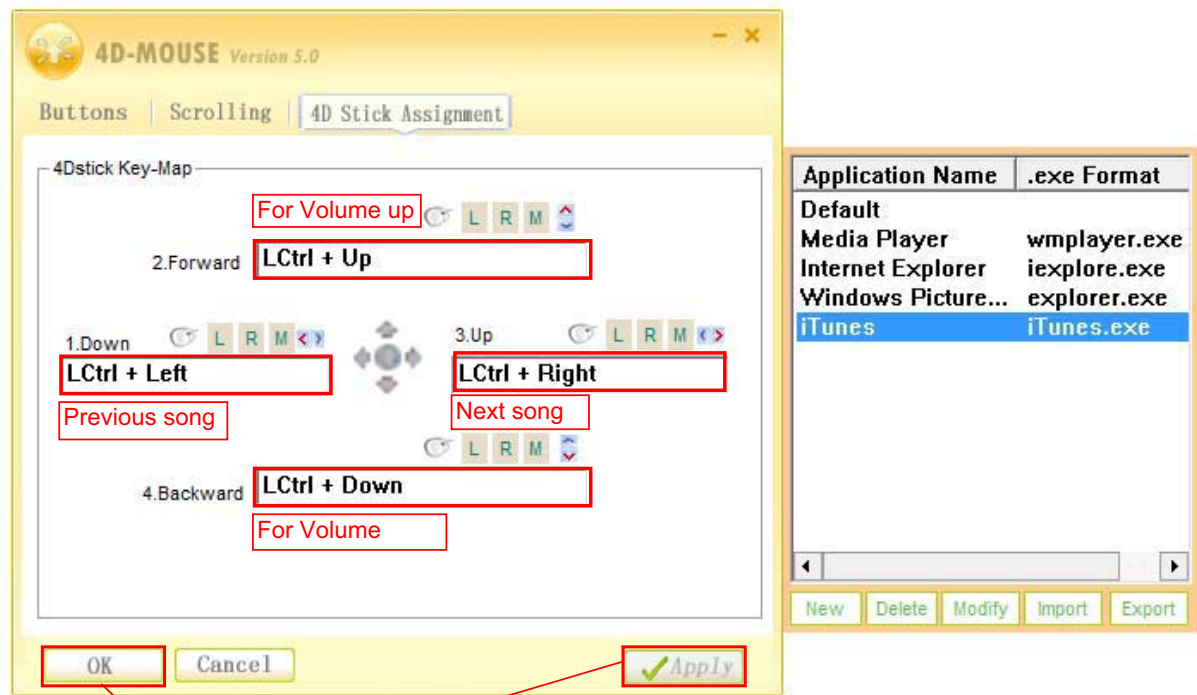
Step 5

Press OK



Then, start to change the command on each button, for example, to set up Button 1 (1.Down):

1. Press "Ctrl" and hold
2. Then press "up"
3. And so on for the following buttons.



Press "Apply" + "OK" to finish.

If user still has question where to select the application from C Driver:

Provide one easy way to locate. Normally, the application icon will appear on desktop after installation.

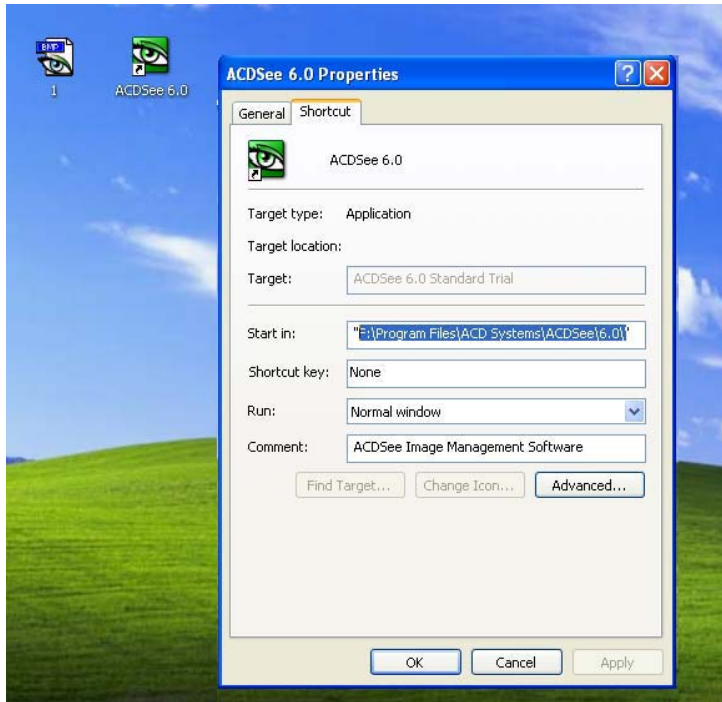
Step 1

- Locate the application icon from desktop.
- Click the mouse right button, a window will pop up
- Click on "Properties"



Step 2

- Click "Shortcut" to see where the application locates at C Driver.



3 4D Tool Bar

Step 1

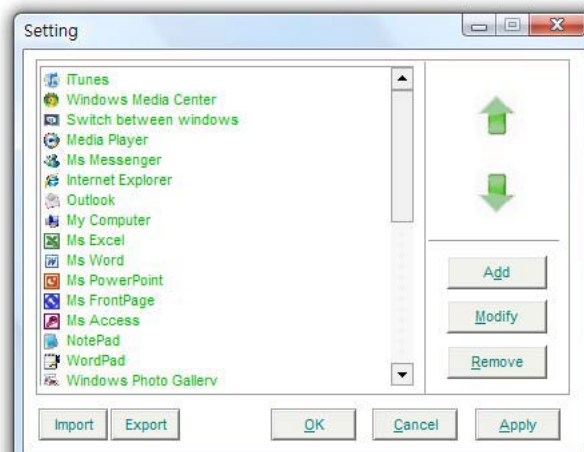
Press 4D Stick to pop up the "4D Tool Bar"



Step 2

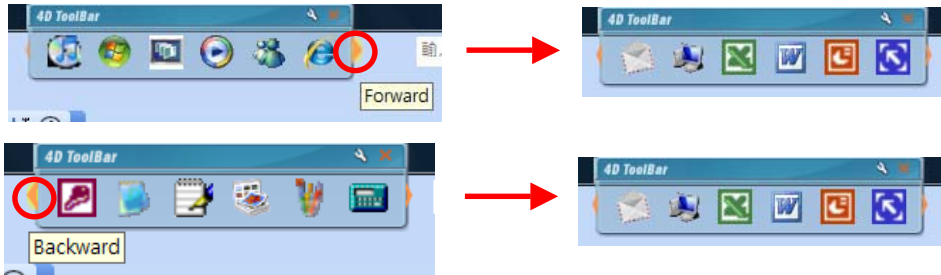


Click "Set up" to check the menu, the list on the menu is default.



Step 3

Click the Right or Left arrow to Forward or Backward the next page for selection.

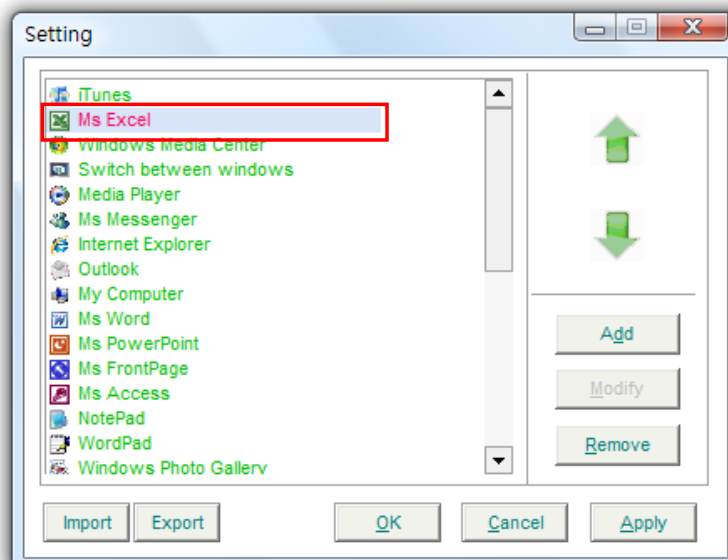
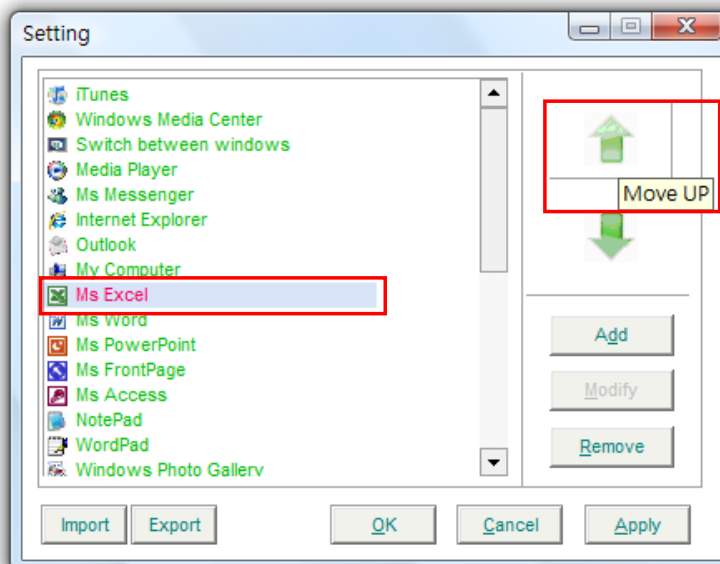


Set up

1. If you want to move forward one specific application:

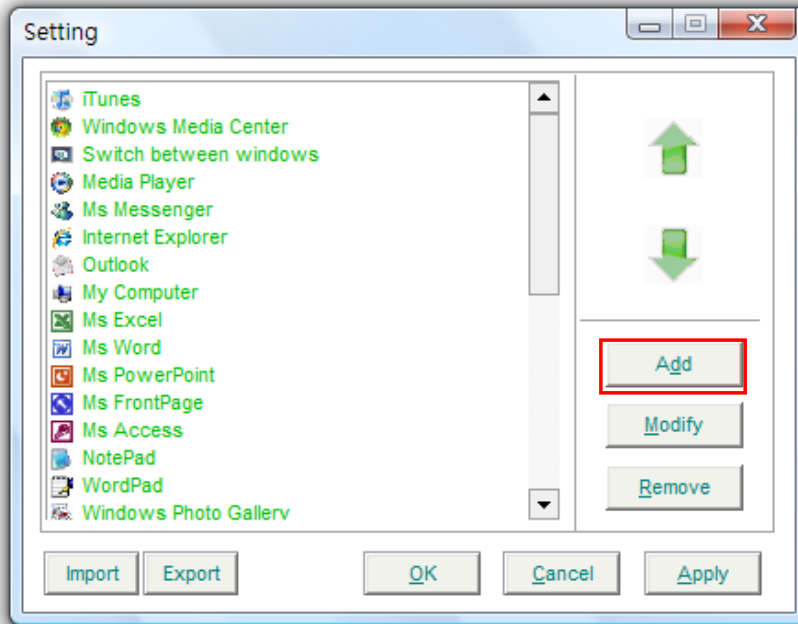


- Click "set up" for the menu.
- Find the application you want to move, such as "Excel".
- Click "Excel", then click the arrow for "Move up"
- To move backward one application, click the arrow for "Move down", and vice versa.

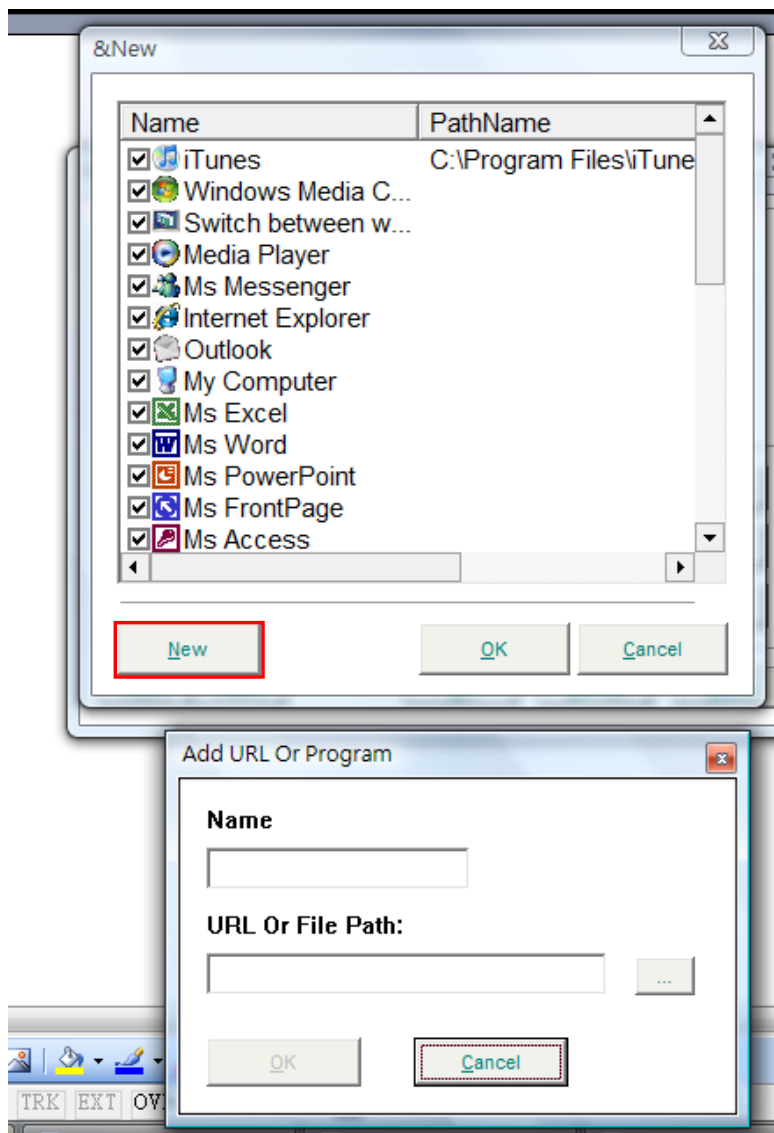


2. If you add want to add application to the menu:

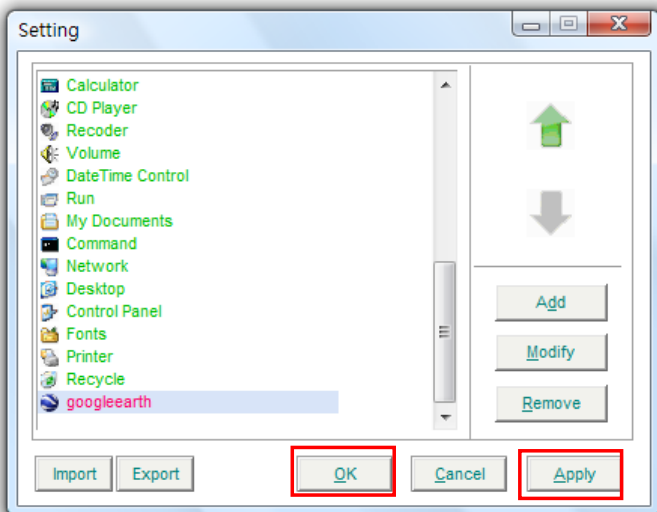
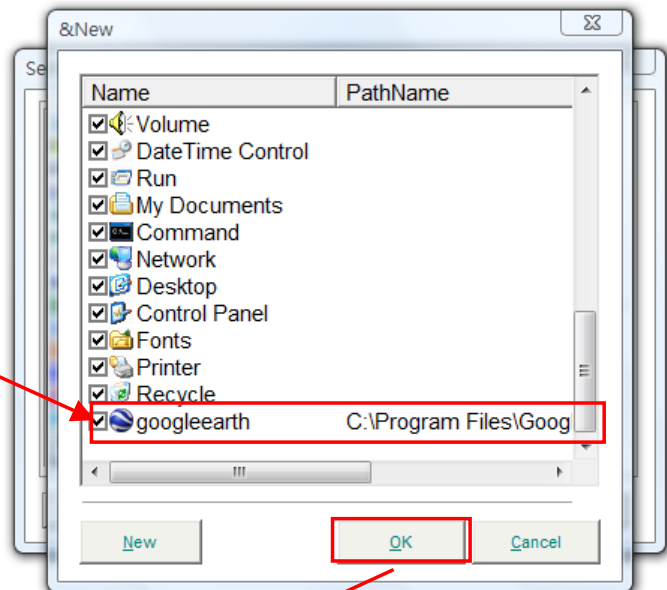
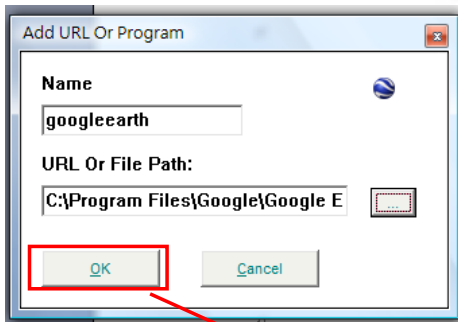
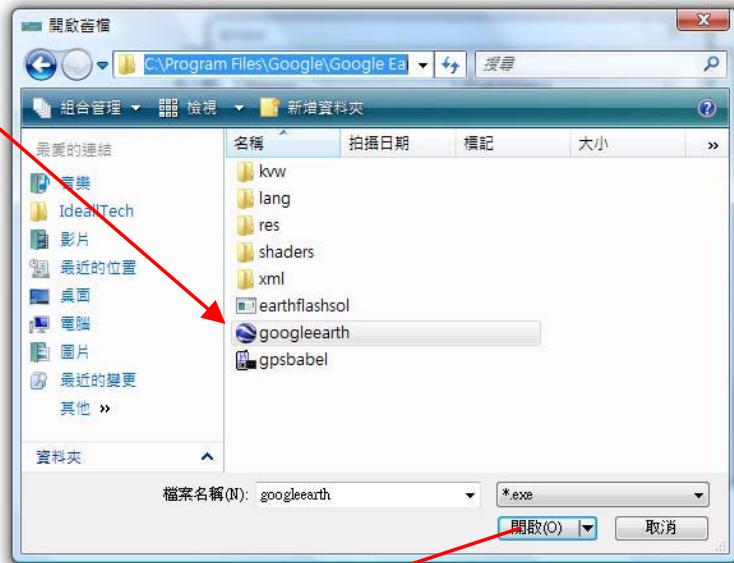
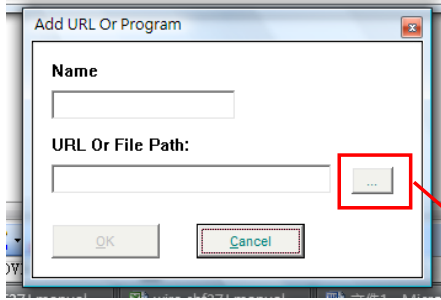
- Click Add



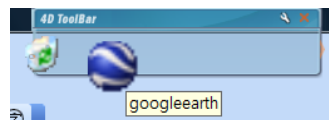
- Then, click New to add new application name and its access route.



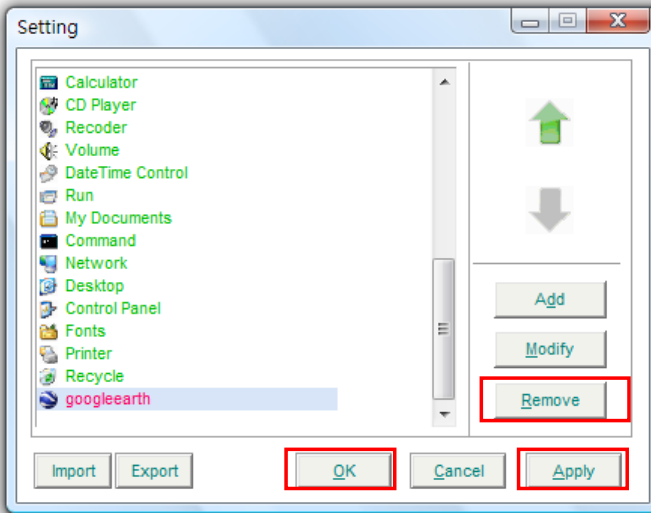
- Click "... " to add Google Earth



- Click "Apply" + "OK" to finish
- And check "4D Toolbar" for access icon
- To move up this icon, repeat Point 1 of "set up"



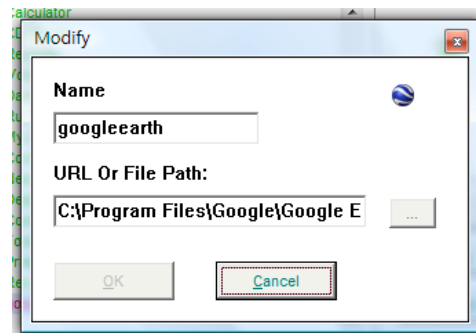
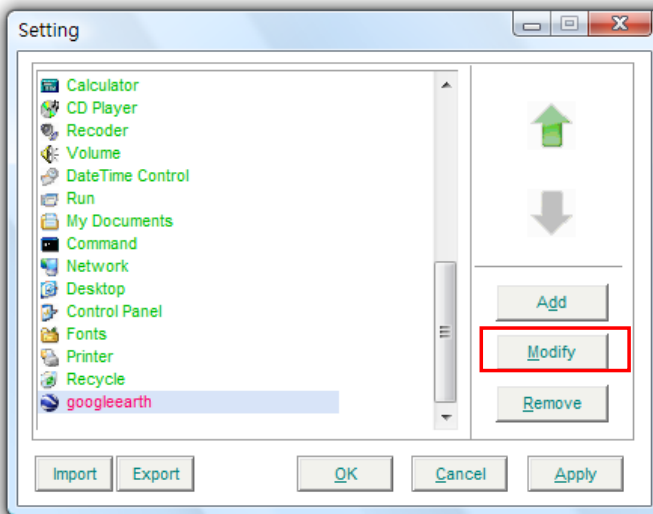
2. If you want to remove one application from the menu, for example to remove Google Earth:
- Click on Google Earth
 - Then, click "Remove"



- Click "Apply" and "OK" to finish
- And check "4D Toolbar" for access icon

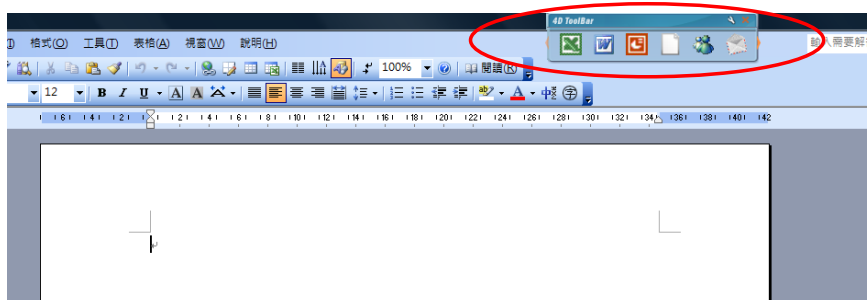


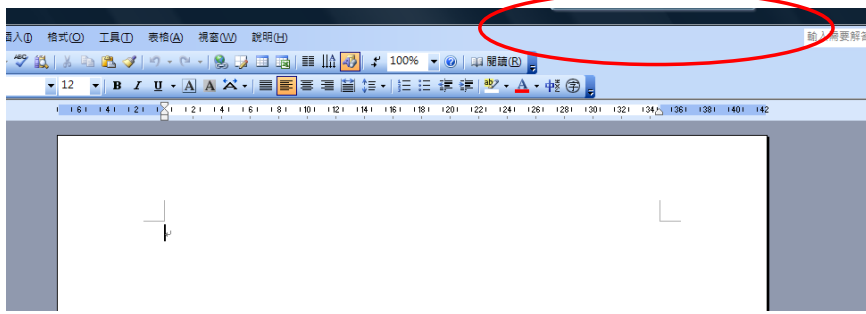
3. For change the access route of the application, you can click "Modify" for review or change.



Hide Away Function

Move the "4D Tool Bar" to wherever at the top of the screen, the tool bar can be hidden when the cursor is not on it. Move the cursor to Tool Bar, it will show up again for selection.





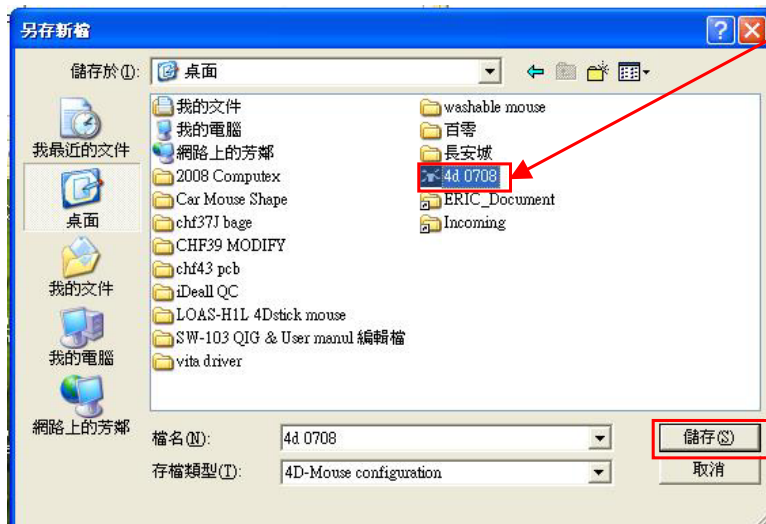
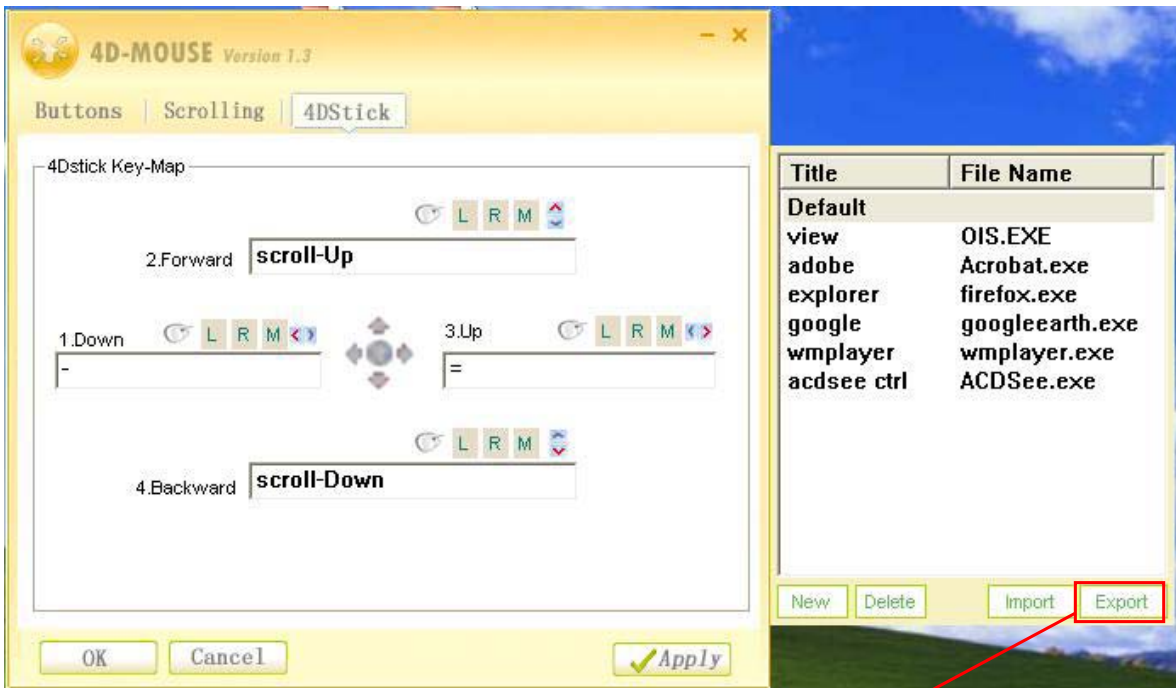
4. Auto Load

The functions which Users set to the 4D Stick for one certain application will be auto loaded once this application is opened.
 For example, users may often use the function of "previous image", "next image", "image zoom in" and "image zoom out" in ACDsee, therefore, users can set these 4 functions to 4D-Stick, and it will work automatically once ACDsee is opened.

5. Import / Export

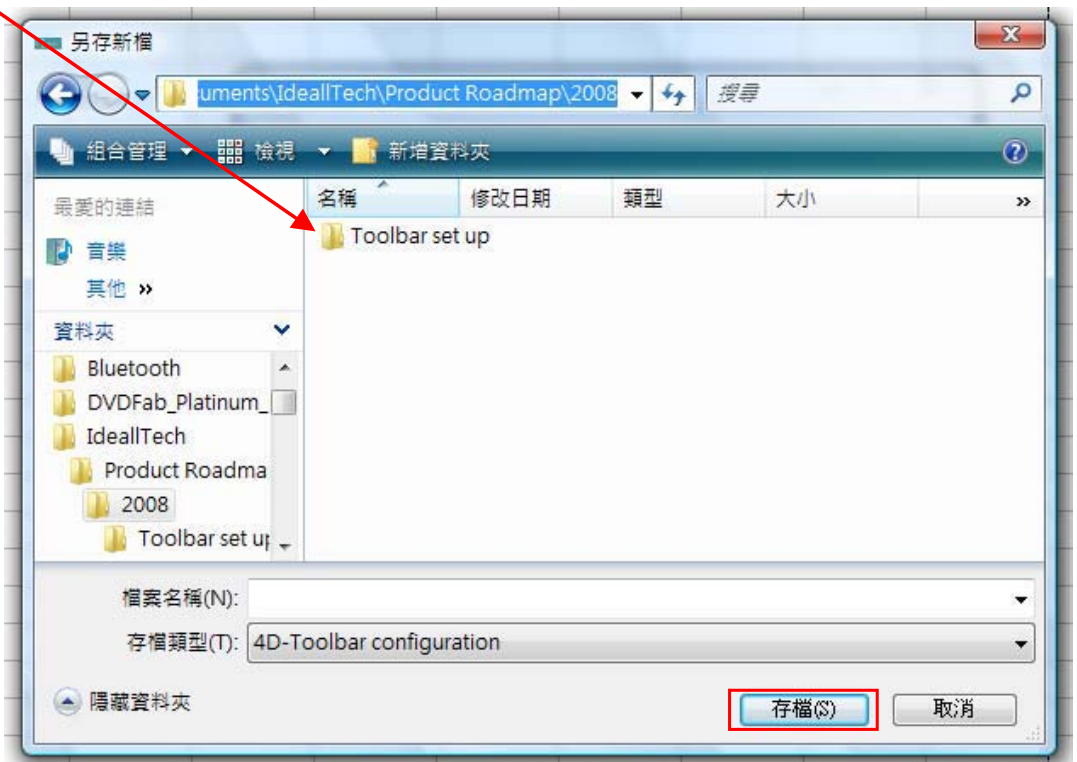
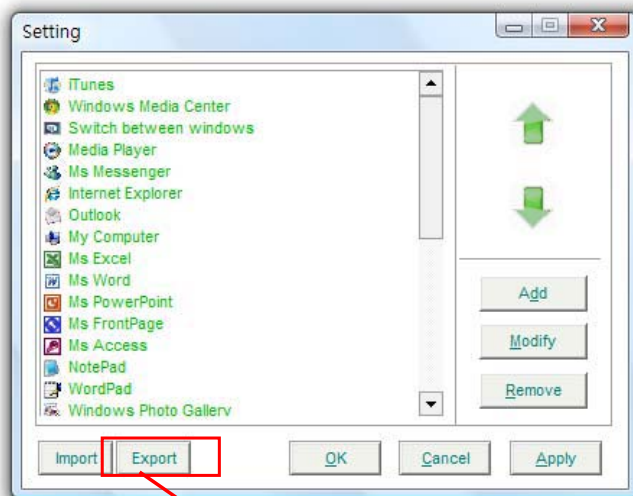
5-1. for 4D Stick

Users can set up key assignments for as many applications as they need. Click "Export", users can also save the key assignments to PC. Click "Import", then to load it back to Software.



5-2. for 4D Tool Bar

Users can save all the menu on the toolbar to PC, Click "Export" and creat one specific folder to save. Click "Import", then to load it back to Software.



Trouble Shooting

1. If mouse is not working, please make sure the USB connector is plug correctly to PC. And if it does, users c the LED light at the mouse bottom.
2. If the driver installation is not working:
 - 2.1 Please make sure to reboot after installation
 - 2.2 Please make sure the 4D Stick icon appears at tool bar at the right bottom

FCC WARNING

This device complies with Part 15 of the FCC Rules. Operation is subject to the following two conditions:

- (1) this device may not cause harmful interference, and
- (2) this device must accept any interference received, including interference that may cause undesired operation.

NOTE: The manufacturer is not responsible for and radio or TV interference caused by unauthorized modifications to this equipment. Such modifications could void the user's authority to operate the equipment.