



32 Maskit St. P.O.box 12412 Herzeliya 46733, Israel

Tune up procedure

The purpose of this document is to define and describe Output Power calibration test that need to perform on Winetworks CPE by the Automatic Test Equipments the document includes explanation about automatic test.

General description

The scope of this document is to describe full automatic tests by ATE.

The document will take us into Output Power test procedure include description, connection and operation process of ATE.

The tests are performed fully automatic without any interference from the operator.

For each test equipment there is a supported replacement that can be installed.

All parameters and test results are stored in the central Database and retrieved via ATE Configuration Utility and Web Server.

Each equipment may be controlled and communicated by/or GPIB, Ethernet, Serial.

The Switching drawer is the interface to the UUT and ATE operator. It's includes all needed indicators and connections to the unit.

Abbreviations

UUT- Unit Under Test.

ATE- Automatic Test Equipment.

SU- Subscriber Unit.

HW- Hardware.

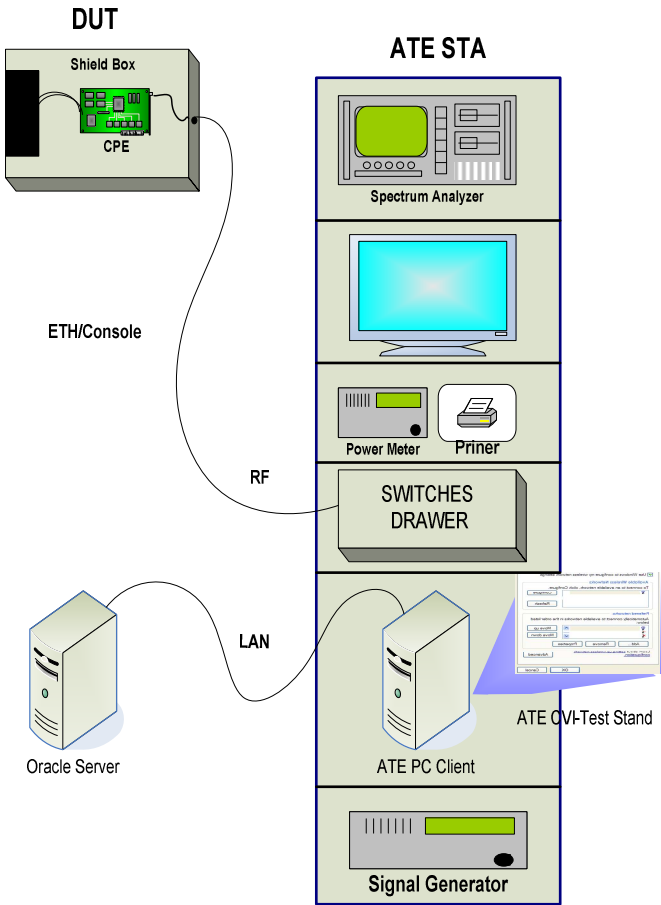
SW- Software.

MAC- Media Access Controller

PS- Power Supply

RF- Radio Frequency.

ATE Setup



Output Power calibration test

Test description

Test target is to calibrate power detector and burn values to internal table.

Test sequence

Connect UUT to power meter

Set UUT to transmit CW at center frequency

Set alc step to 0

Measure by power meter

Burn measured power to UUT

Set alc step to get wanted power

Set UUT to transmit OFDM for 60 sec.

Measure by power meter

Set UUT to first frequency from table

Start calibrate PD