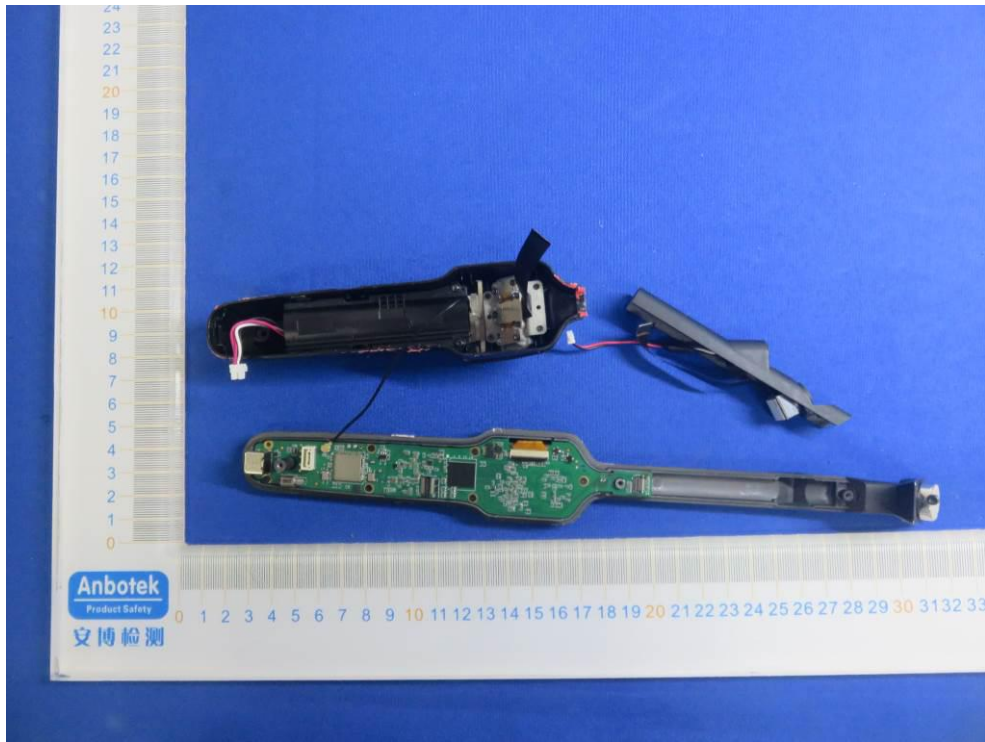
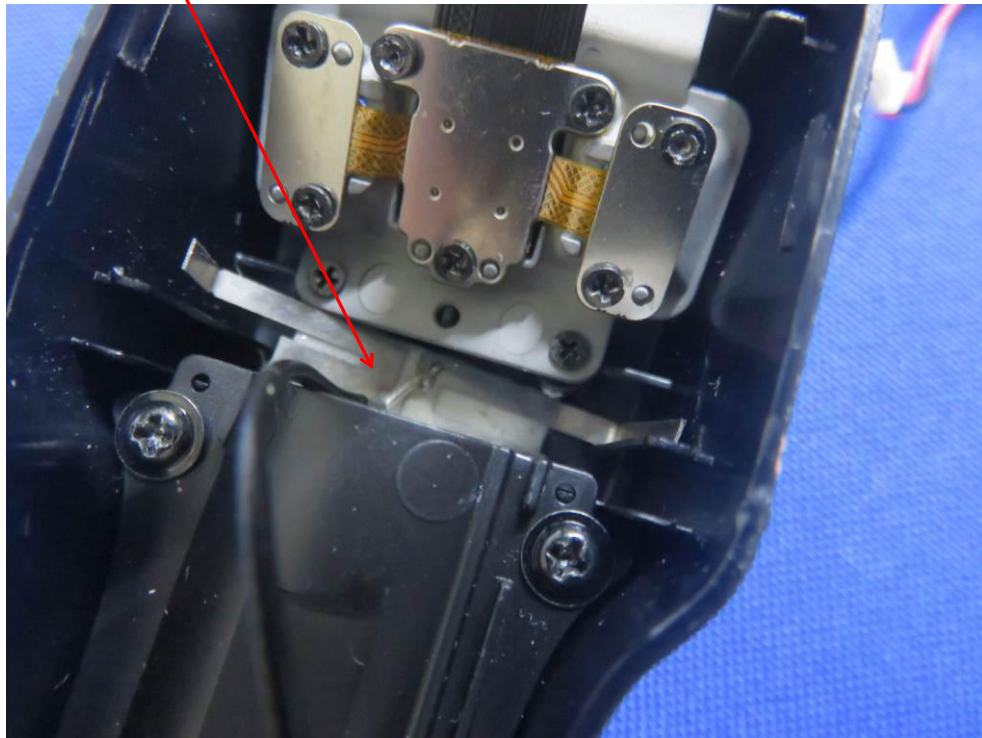
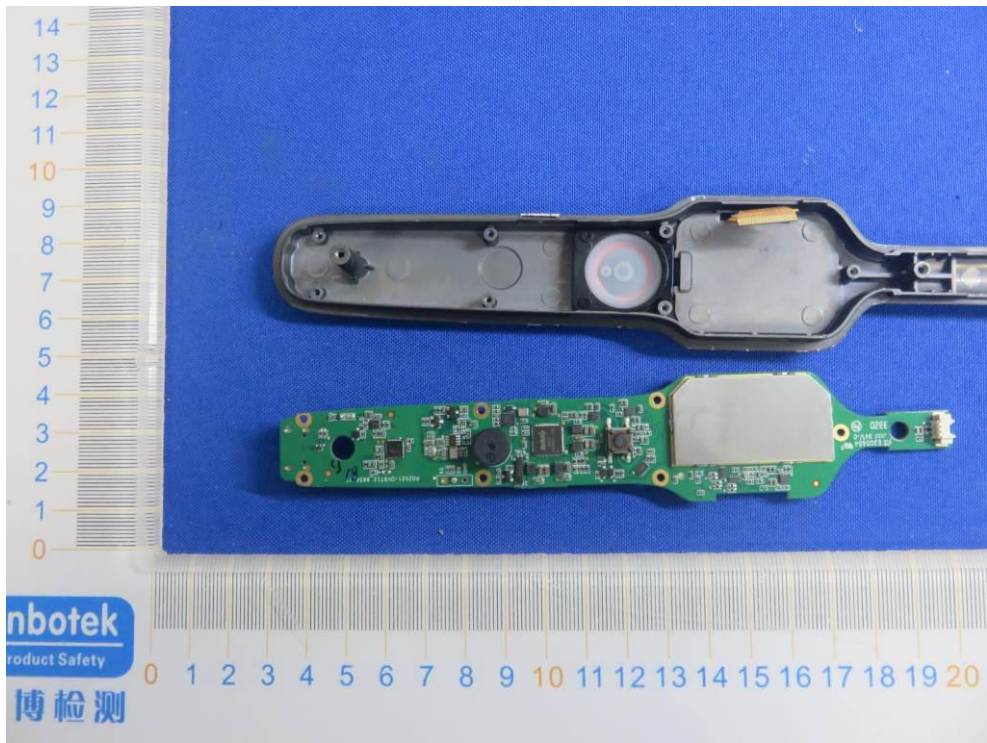
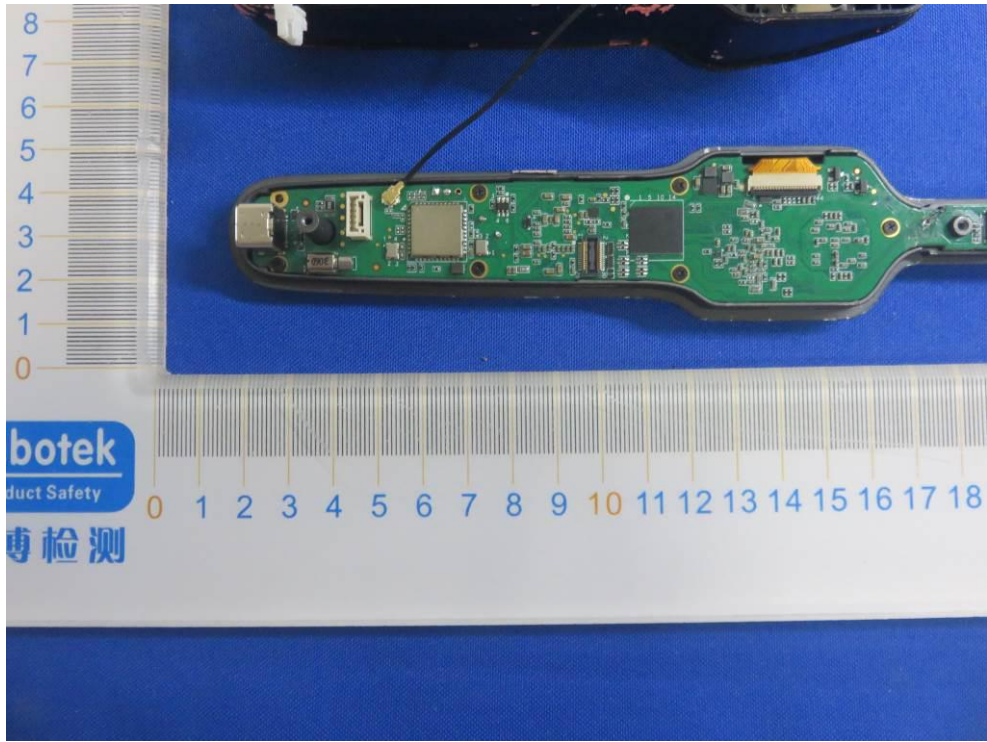


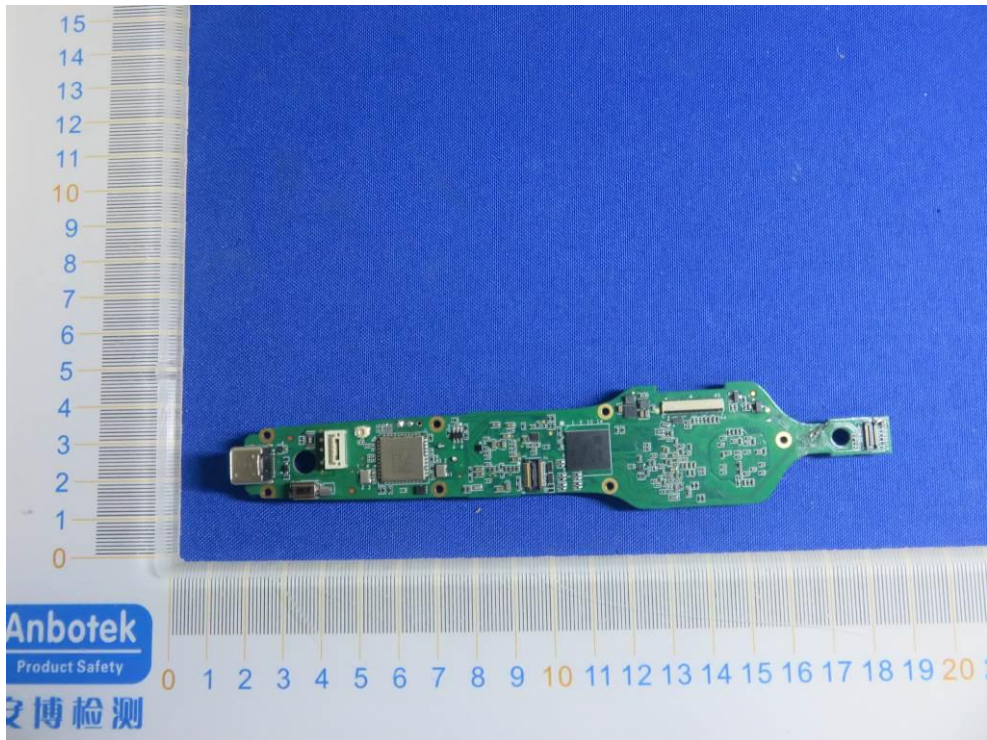
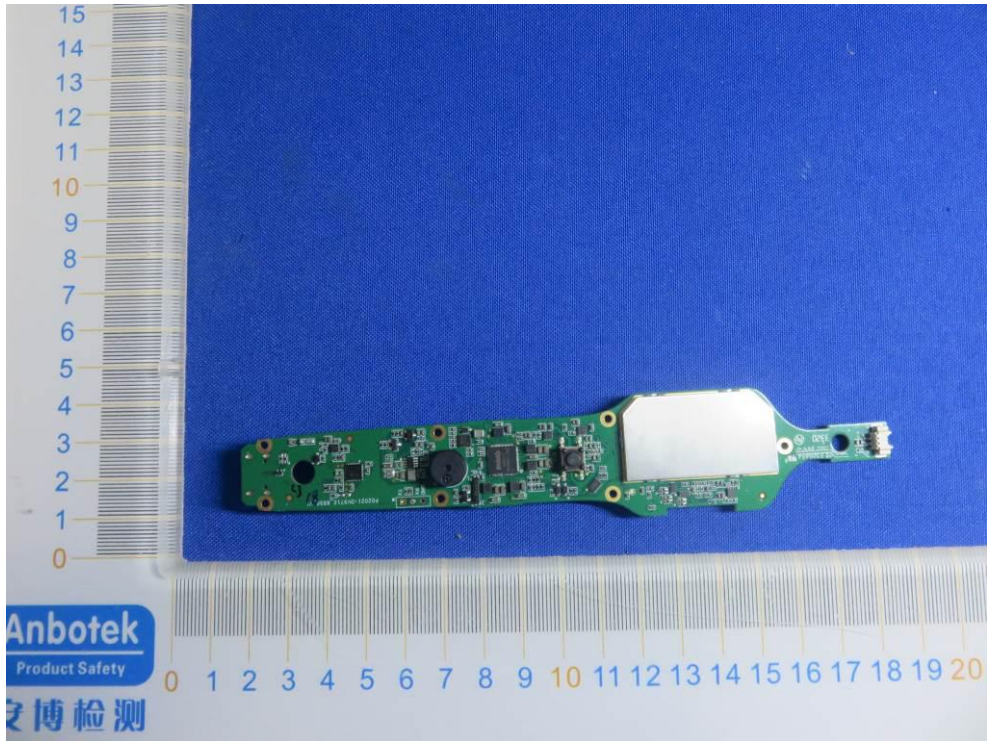
FCC ID: WQ8TBE200

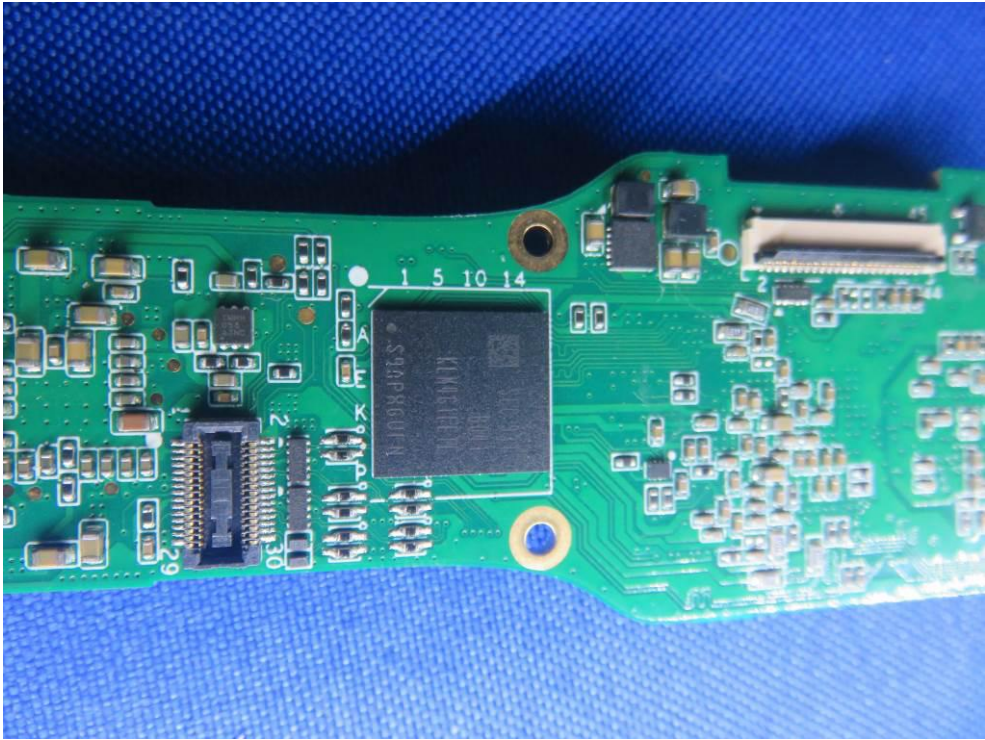
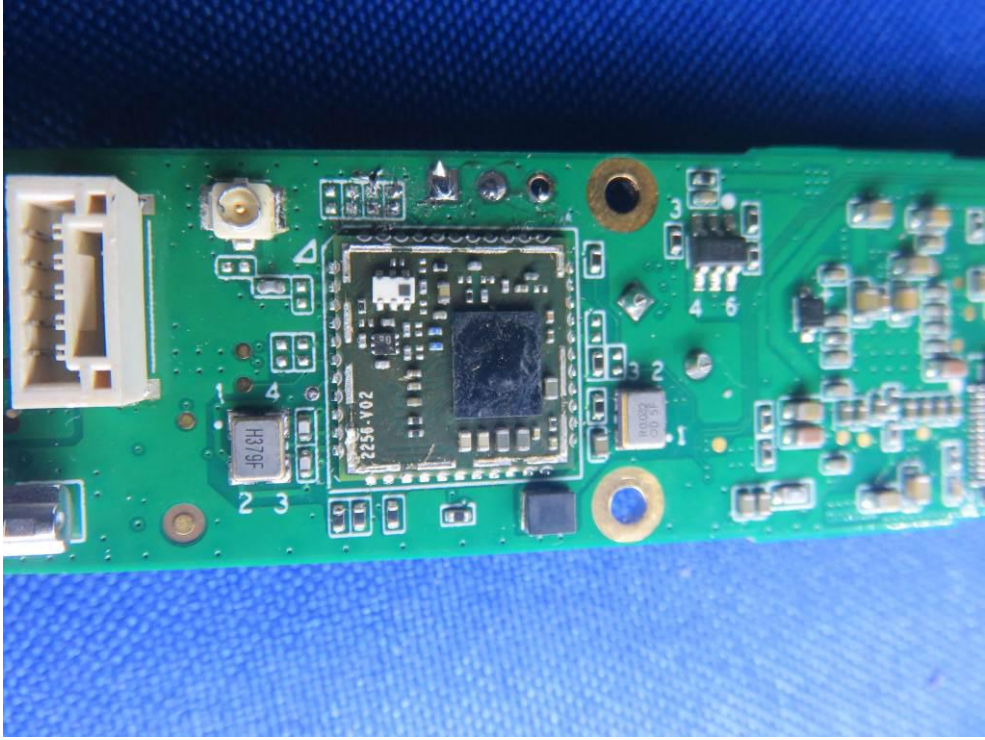


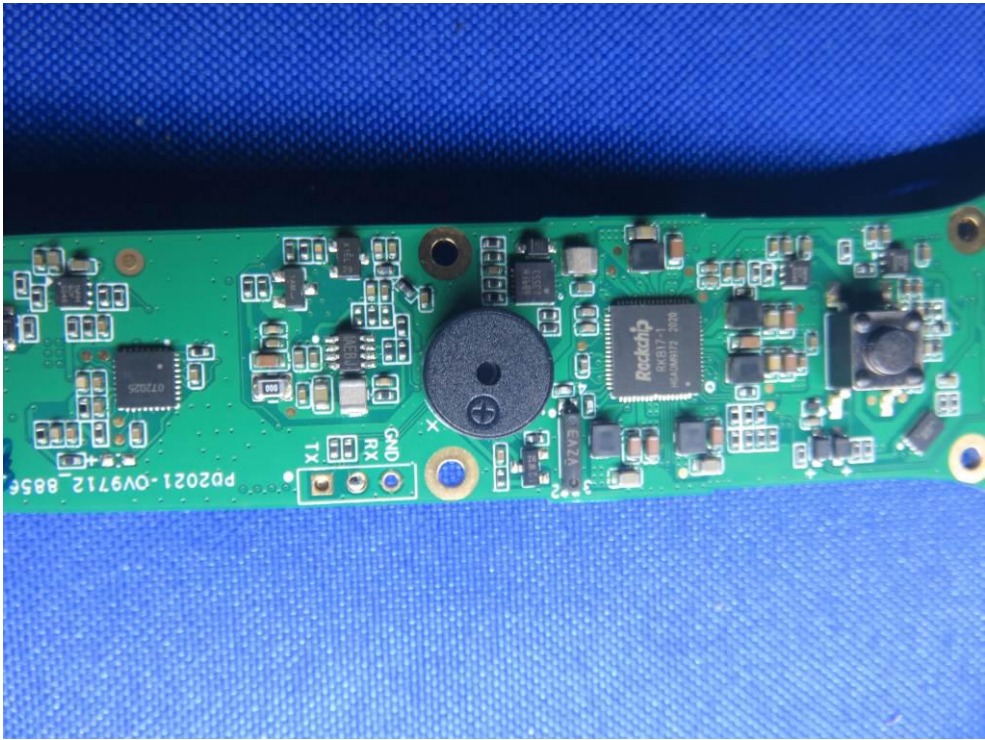
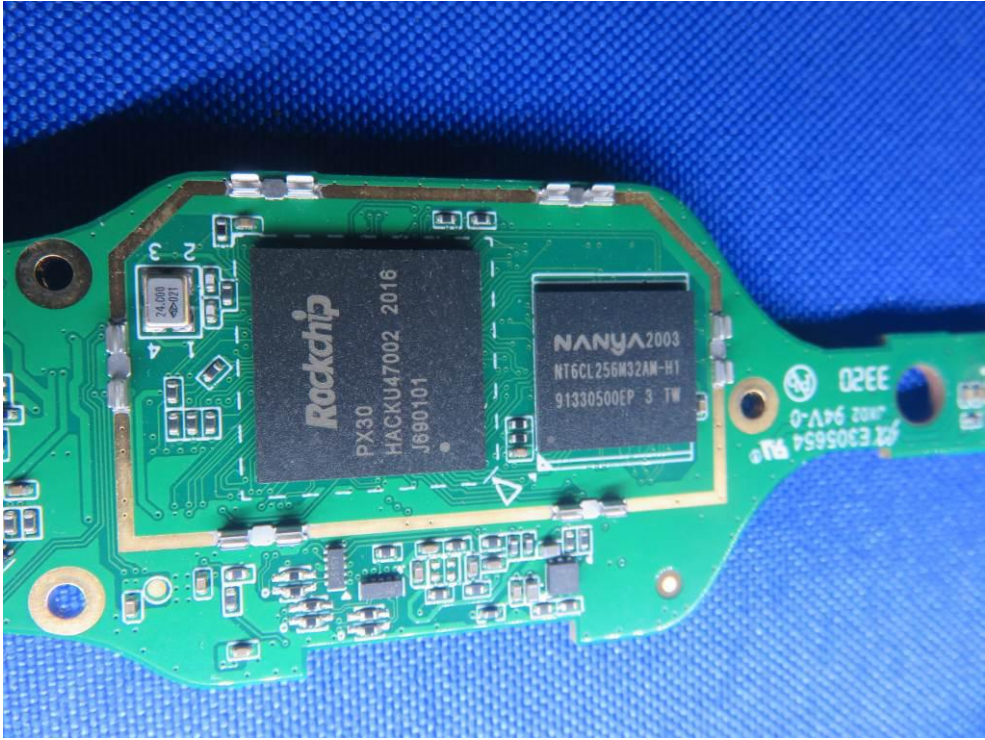
WLAN ANT













二次锂离子电池 Rechargeable Li-ion battery
产品型号(Model): PT18650
(11R19/66)
额定容量(Rated Capacity): 3000mAh
额定电压(Rated Voltage): 3.7V 5.0Wh
充电限制电压(Max. Charge Voltage): 4.2V
制造商: 广东科泰电源有限公司
Manufacturer: Guangdong Pow-Tech New Power Co., Ltd.
警告 CAUTION

