

FCC TEST REPORT

Client Name : Autel Intelligent Tech. Corp., Ltd.

Address : 7th-8th, 10th Floor, Bldg. B1, Zhiyuan, Xueyuan Rd., Xili,
Nanshan Shenzhen China

Product Name : APB112

Date : Jun. 29, 2019

Shenzhen Anbotek Compliance Laboratory Limited



Contents

1. General Information.....	4
1.1. Client Information.....	4
1.2. Description of Device (EUT).....	4
1.3. Auxiliary Equipment Used During Test.....	4
1.4. Description of Test Modes.....	5
1.5. Description Of Test Setup.....	6
1.6. Test Equipment List.....	7
1.7. Description of Test Facility.....	8
2. Summary of Test Results.....	9
3. Conducted Emission Test.....	10
3.1. Test Standard and Limit.....	10
3.2. Test Setup.....	10
3.3. Test Procedure.....	10
3.4. Test Data.....	10
4. Radiation Spurious Emission and Band Edge.....	15
4.1. Test Standard and Limit.....	15
4.2. Test Setup.....	15
4.3. Test Procedure.....	16
4.4. Test Data.....	17
5. Antenna Requirement.....	23
5.1. Test Standard and Requirement.....	23
5.2. Antenna Connected Construction.....	23
APPENDIX I -- TEST SETUP PHOTOGRAPH.....	24
APPENDIX II -- EXTERNAL PHOTOGRAPH.....	26
APPENDIX III -- INTERNAL PHOTOGRAPH.....	30

TEST REPORT

Applicant : Autel Intelligent Tech. Corp., Ltd.
Manufacturer : Autel Intelligent Tech. Corp., Ltd.
Product Name : APB112
Model No. : APB112
Trade Mark : AUTEL
Rating(s) : Input: DC 5V, 1A

Test Standard(s) : FCC Part15 Subpart C 2018, Paragraph 15.209
Test Method(s) : ANSI C63.10: 2013

The device described above is tested by Shenzhen Anbotek Compliance Laboratory Limited to determine the maximum emission levels emanating from the device and the severe levels of the device can endure and its performance criterion. The measurement results are contained in this test report and Shenzhen Anbotek Compliance Laboratory Limited is assumed full of responsibility for the accuracy and completeness of these measurements. Also, this report shows that the EUT (Equipment Under Test) is technically compliant with the FCC Part 15 Subpart C requirements.

This report applies to above tested sample only and shall not be reproduced in part without written approval of Shenzhen Anbotek Compliance Laboratory Limited.

Date of Receipt
Date of Test

Jun. 18, 2019
Jun. 18~27, 2019

Prepared By



[Signature]

(Engineer / Dolly Mo)

Reviewer

[Signature]

(Supervisor / Snowy Meng)

Approved & Authorized Signer

[Signature]

(Manager / Sally Zhang)

1. General Information

1.1. Client Information

Applicant	:	Autel Intelligent Tech. Corp., Ltd.
Address	:	7th-8th, 10th Floor, Bldg. B1, Zhiyuan, Xueyuan Rd., Xili, Nanshan Shenzhen China
Manufacturer	:	Autel Intelligent Tech. Corp., Ltd.
Address	:	7th-8th, 10th Floor, Bldg. B1, Zhiyuan, Xueyuan Rd., Xili, Nanshan Shenzhen China
Factory	:	Autel Intelligent Technology Corp.,Ltd.
Address	:	6th Floor, Building 1, Yanxiang Zhigu, NO.11 Gaoxin West Rd., Guangming New District, Shenzhen City, Guangdong Province, China.
Factory	:	AUTEL VIETNAM COMPANY LIMITED
Address	:	4th Floor, Factory#6, Land#CN1, An Duong Industrial Zone, Hong Phong Township, An Duong County, Hai Phong, Viet Nam

1.2. Description of Device (EUT)

Product Name	:	APB112
Model No.	:	APB112
Trade Mark	:	AUTEL
Test Power Supply	:	AC 240V, 60Hz for adapter/ AC 120V, 60Hz for adapter/
Test Sample No.	:	1-2-1(Normal Sample), 1-2-2(Engineering Sample)
Product Description	Operation Frequency:	125KHz
	Modulation Type:	FSK
	Antenna Type:	Inductive loop coil Antenna
	Antenna Gain(Peak):	0 dBi
Remark: 1) For a more detailed features description, please refer to the manufacturer's specifications or the User's Manual.		

1.3. Auxiliary Equipment Used During Test.

Adapter	:	Manufacturer: ZTE
		M/N: STC-A205011000USBA-C S/N: 201202102100876 Input: 100-240V~ 50/60Hz, 0.3A Output: DC 5V, 2000mA

1.4. Description of Test Modes

To investigate the maximum EMI emission characteristics generates from EUT, the test system was pre-scanning tested base on the consideration of following EUT operation mode or test configuration mode which possible have effect on EMI emission level. Each of these EUT operation mode(s) or test configuration mode(s) mentioned above was evaluated respectively.

Pretest Mode	Description
Mode 1	Full load, Wireless charger module

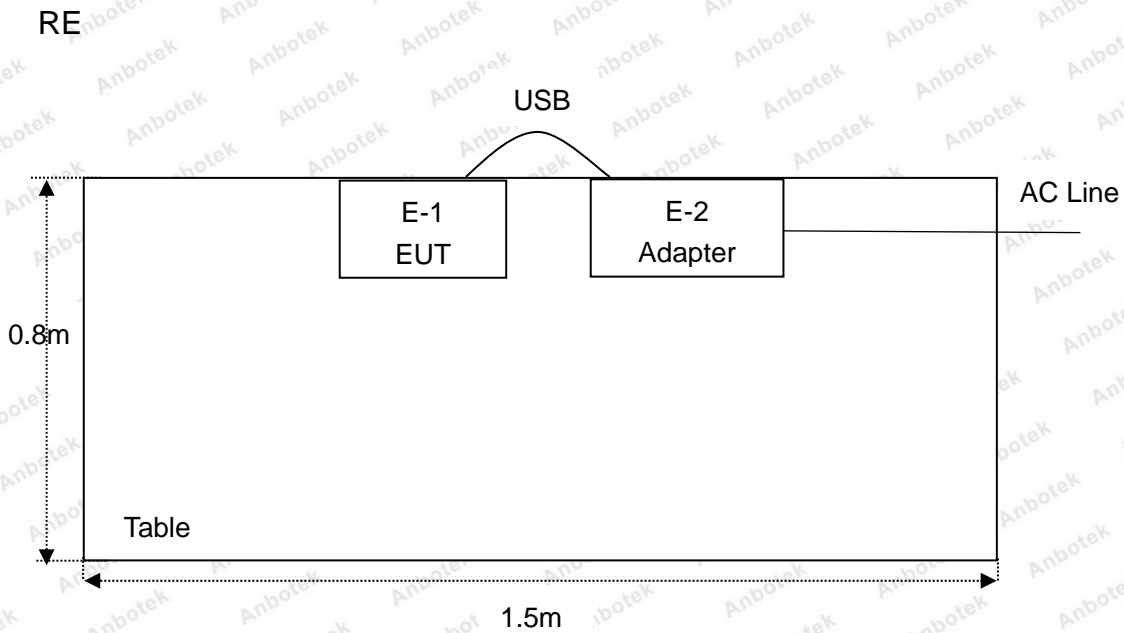
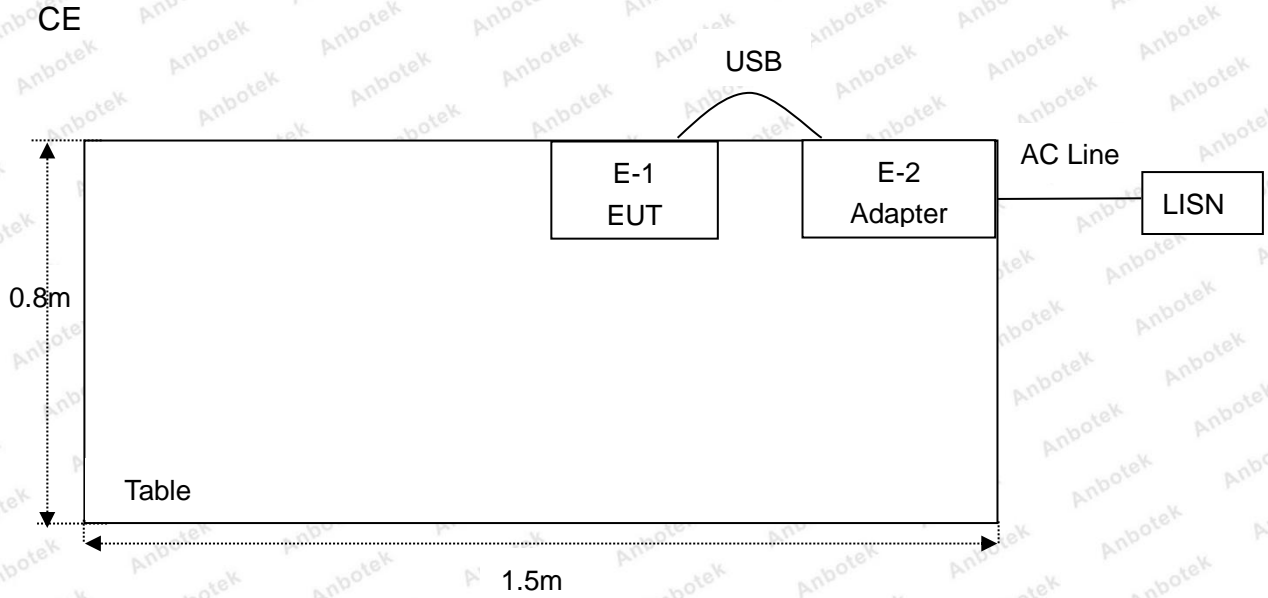
For Conducted Emission	
Final Test Mode	Description
Mode 1	Full load, Wireless charger module

For Radiated Emission	
Final Test Mode	Description
Mode 1	Full load, Wireless charger module

Note: (1)Test channel is 0.1250MHz.

(2)All the situation(full load, half load and empty load) has been tested,only the worst situation (full load) was recorded in the report.

1.5. Description Of Test Setup



1.6. Test Equipment List

Item	Equipment	Manufacturer	Model No.	Serial No.	Last Cal.	Cal. Interval
1.	L.I.S.N. Artificial Mains Network	Rohde & Schwarz	ENV216	100055	Nov. 26, 2018	1 Year
2.	EMI Test Receiver	Rohde & Schwarz	ESPI3	101604	Nov. 05, 2018	1 Year
3.	RF Switching Unit	Compliance Direction	RSU-M2	38303	Nov. 05, 2018	1 Year
4.	Spectrum Analysis	Agilent	E4407B	US39390582	Nov. 05, 2018	1 Year
5.	MAX Spectrum Analysis	Agilent	N9020A	MY51170037	Nov. 05, 2018	1 Year
6.	Preamplifier	SKET Electronic	BK1G18G30 D	KD17503	Nov. 05, 2018	1 Year
7.	Double Ridged Horn Antenna	Instruments corporation	GTH-0118	351600	Nov. 20, 2018	1 Year
8.	Bilog Broadband Antenna	Schwarzbeck	VULB9163	VULB 9163-289	Nov. 19, 2018	1 Year
9.	Loop Antenna	Schwarzbeck	FMZB1519B	00053	Nov. 20, 2018	1 Year
10.	Horn Antenna	A-INFO	LB-180400-K F	J211060628	Nov. 20, 2018	1 Year
11.	Pre-amplifier	SONOMA	310N	186860	Nov. 05, 2018	1 Year
12.	EMI Test Software EZ-EMC	SHURPLE	N/A	N/A	N/A	N/A
13.	RF Test Control System	YIHENG	YH3000	2017430	Nov. 05, 2018	1 Year
14.	Power Sensor	DAER	RPR3006W	15I00041SN045	Nov. 05, 2018	1 Year
15.	Power Sensor	DAER	RPR3006W	15I00041SN046	Nov. 05, 2018	1 Year
16.	MXA Spectrum Analysis	Agilent	N9020A	MY51170037	Nov. 05, 2018	1 Year
17.	MXG RF Vector Signal Generator	Agilent	N5182A	MY48180656	Nov. 05, 2018	1 Year
18.	Signal Generator	Agilent	E4421B	MY41000743	Nov. 05, 2018	1 Year
19.	DC Power Supply	LW	TPR-6420D	374470	Oct. 31, 2018	1 Year
20.	Constant Temperature Humidity Chamber	ZHONGJIAN	ZJ-KHWS80 B	N/A	Nov. 01, 2018	1 Year

1.7. Description of Test Facility

The test facility is recognized, certified, or accredited by the following organizations:

FCC-Registration No.: 184111

Shenzhen Anbotek Compliance Laboratory Limited, EMC Laboratory has been registered and fully described in a report filed with the (FCC) Federal Communications Commission. The acceptance letter from the FCC is maintained in our files. Registration No. 184111, July 31, 2017.

ISED-Registration No.: 8058A-1

Shenzhen Anbotek Compliance Laboratory Limited, EMC Laboratory has been registered and fully described in a report filed with the (ISED) Innovation, Science and Economic Development Canada. The acceptance letter from the ISED is maintained in our files. Registration 8058A-1, June 13, 2016.

Test Location

Shenzhen Anbotek Compliance Laboratory Limited.

1/F, Building D, Sogood Science and Technology Park, Sanwei community, Hangcheng Street, Bao'an District, Shenzhen, Guangdong, China.518102

2. Summary of Test Results

Standard Section	Test Item	Result
FCC Part 15, Paragraph 15.207	Conducted Emission Test	PASS
FCC Part 15, Paragraph 15.209(a)(f)	Spurious Emission	PASS
Part 15.203	Antenna Requirement	PASS



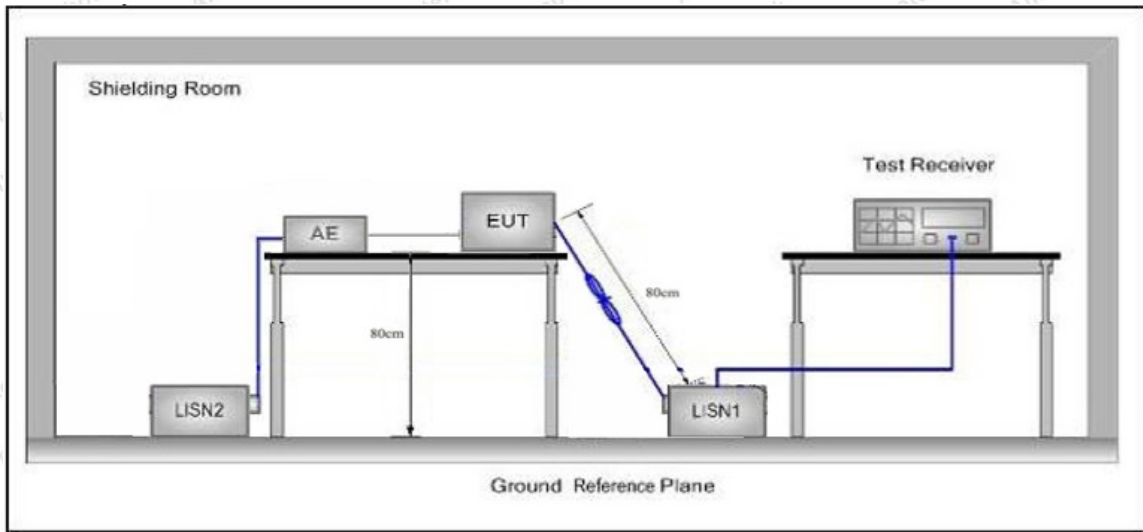
3. Conducted Emission Test

3.1. Test Standard and Limit

Test Standard	FCC Part15 Section 15.207		
Test Limit	Frequency	Maximum RF Line Voltage (dBuV)	
		Quasi-peak Level	Average Level
	150kHz~500kHz	66 ~ 56 *	56 ~ 46 *
	500kHz~5MHz	56	46
5MHz~30MHz	60	50	

Remark: (1) *Decreasing linearly with logarithm of the frequency.
(2) The lower limit shall apply at the transition frequency.

3.2. Test Setup



3.3. Test Procedure

The EUT system is connected to the power mains through a line impedance stabilization network (L.I.S.N.). This provides a 50ohm coupling impedance for the EUT system. Please refer the block diagram of the test setup and photographs. Both sides of AC line are checked to find out the maximum conducted emission. In order to find the maximum emission levels, the relative positions of equipment and all of the interface cables shall be changed according to FCC ANSI C63.10-2013 on Conducted Emission Measurement.

The bandwidth of test receiver (ESCI) set at 9kHz.

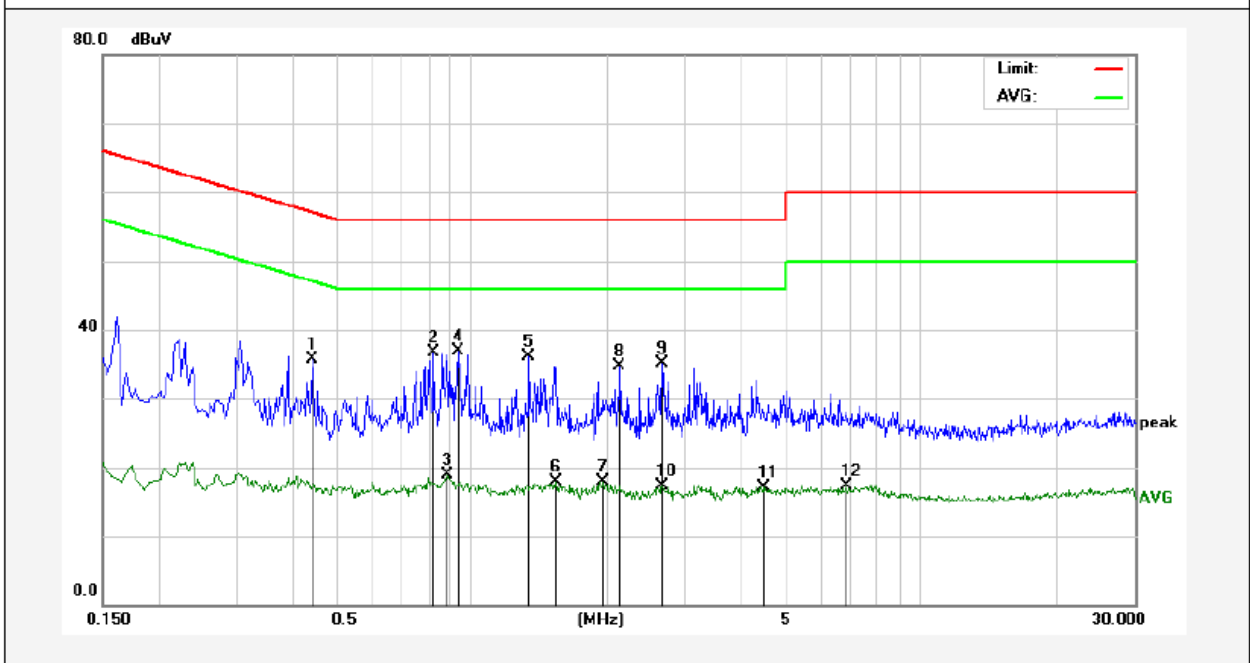
The frequency range from 150kHz to 30MHz is checked.

3.4. Test Data

Please to see the following pages

Conducted Emission Test Data

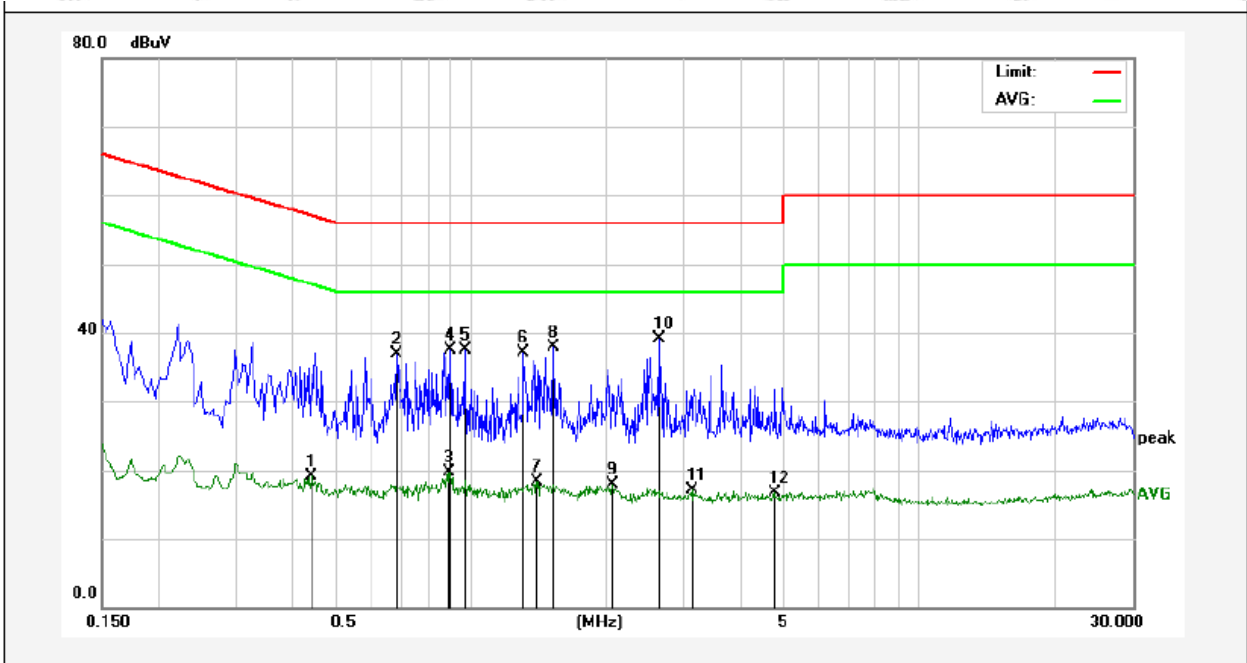
Test Site: 1# Shielded Room
 Operating Condition: Mode 1
 Test Specification: AC 240V, 60Hz for adapter
 Comment: Live Line
 Tem.: 22.6°C Hum.: 53%



No.	Freq. (MHz)	Reading (dBuV)	Factor (dB)	Result (dBuV)	Limit dBuV	Over Limit (dB)	Detector	Remark
1	0.4420	15.75	19.95	35.70	57.02	-21.32	QP	
2	0.8220	16.73	20.07	36.80	56.00	-19.20	QP	
3	0.8820	-1.25	20.09	18.84	46.00	-27.16	AVG	
4	0.9300	16.80	20.10	36.90	56.00	-19.10	QP	
5	1.3420	15.99	20.13	36.12	56.00	-19.88	QP	
6	1.5380	-2.16	20.13	17.97	46.00	-28.03	AVG	
7	1.9660	-2.21	20.14	17.93	46.00	-28.07	AVG	
8	2.1380	14.64	20.14	34.78	56.00	-21.22	QP	
9	2.6580	14.90	20.15	35.05	56.00	-20.95	QP	
10	2.6580	-2.90	20.15	17.25	46.00	-28.75	AVG	
11	4.4740	-3.04	20.19	17.15	46.00	-28.85	AVG	
12	6.8140	-2.85	20.25	17.40	50.00	-32.60	AVG	

Conducted Emission Test Data

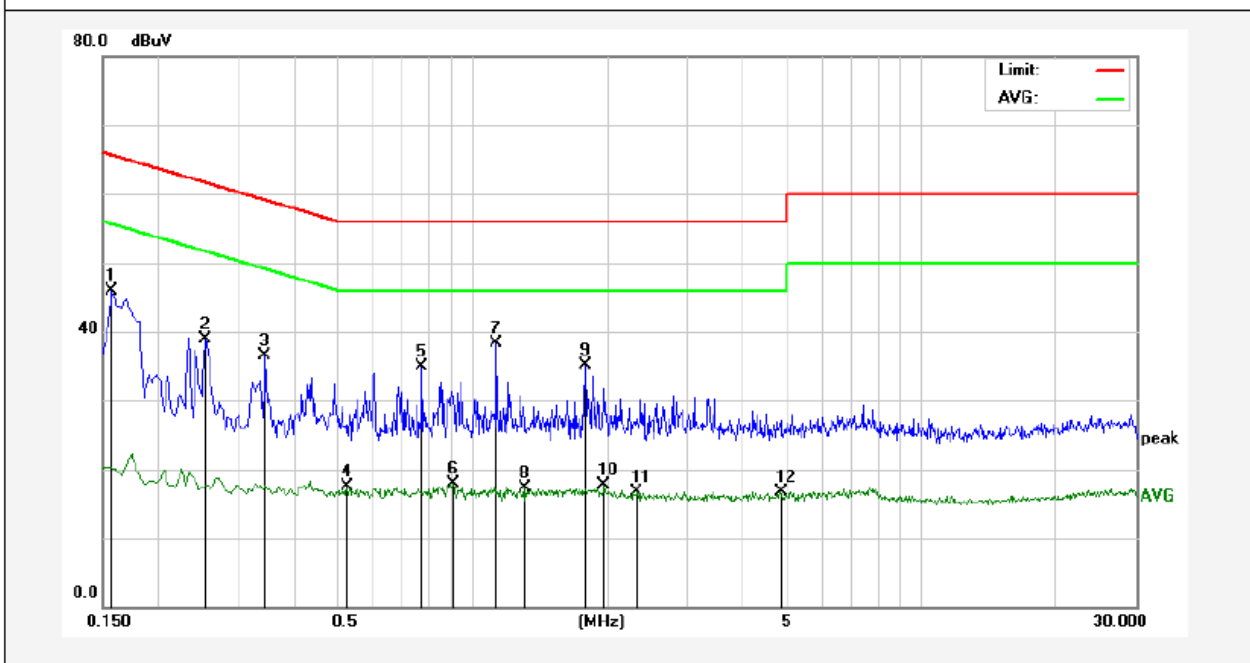
Test Site: 1# Shielded Room
 Operating Condition: Mode 1
 Test Specification: AC 240V, 60Hz for adapter
 Comment: Neutral Line
 Tem.: 22.6°C Hum.: 53%



No.	Freq. (MHz)	Reading (dBUV)	Factor (dB)	Result (dBUV)	Limit (dBUV)	Over Limit (dB)	Detector	Remark
1	0.4420	-0.87	19.95	19.08	47.02	-27.94	AVG	
2	0.6860	16.85	20.04	36.89	56.00	-19.11	QP	
3	0.8940	-0.33	20.09	19.76	46.00	-26.24	AVG	
4	0.9020	17.36	20.09	37.45	56.00	-18.55	QP	
5	0.9700	17.44	20.11	37.55	56.00	-18.45	QP	
6	1.3140	16.98	20.13	37.11	56.00	-18.89	QP	
7	1.4060	-1.79	20.13	18.34	46.00	-27.66	AVG	
8	1.5300	17.79	20.13	37.92	56.00	-18.08	QP	
9	2.0700	-2.26	20.14	17.88	46.00	-28.12	AVG	
10	2.6260	18.88	20.15	39.03	56.00	-16.97	QP	
11	3.1260	-2.98	20.16	17.18	46.00	-28.82	AVG	
12	4.7619	-3.49	20.20	16.71	46.00	-29.29	AVG	

Conducted Emission Test Data

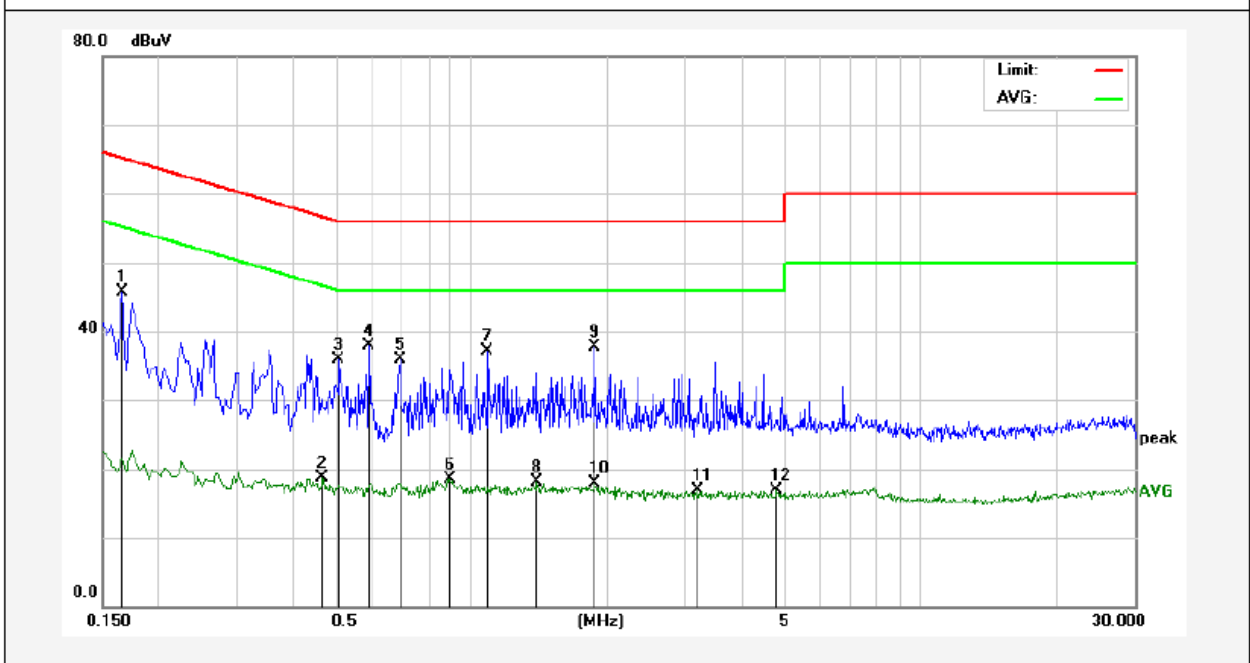
Test Site: 1# Shielded Room
 Operating Condition: Mode 1
 Test Specification: AC 120V, 60Hz for adapter
 Comment: Live Line
 Tem.: 22.6°C Hum.: 53%



No.	Freq. (MHz)	Reading (dBUV)	Factor (dB)	Result (dBUV)	Limit dBUV	Over Limit (dB)	Detector	Remark
1	0.1580	26.02	19.90	45.92	65.56	-19.64	QP	
2	0.2540	18.99	19.89	38.88	61.62	-22.74	QP	
3	0.3460	16.53	19.91	36.44	59.06	-22.62	QP	
4	0.5260	-2.55	19.99	17.44	46.00	-28.56	AVG	
5	0.7740	14.92	20.06	34.98	56.00	-21.02	QP	
6	0.9060	-2.14	20.09	17.95	46.00	-28.05	AVG	
7	1.1340	18.23	20.12	38.35	56.00	-17.65	QP	
8	1.3099	-2.86	20.13	17.27	46.00	-28.73	AVG	
9	1.7900	14.89	20.14	35.03	56.00	-20.97	QP	
10	1.9620	-2.44	20.14	17.70	46.00	-28.30	AVG	
11	2.3300	-3.36	20.15	16.79	46.00	-29.21	AVG	
12	4.8340	-3.50	20.20	16.70	46.00	-29.30	AVG	

Conducted Emission Test Data

Test Site: 1# Shielded Room
 Operating Condition: Mode 1
 Test Specification: AC 120V, 60Hz for adapter
 Comment: Neutral Line
 Tem.: 22.6°C Hum.: 53%



No.	Freq. (MHz)	Reading (dBuV)	Factor (dB)	Result (dBuV)	Limit dBuV	Over Limit (dB)	Detector	Remark
1	0.1660	25.81	19.90	45.71	65.15	-19.44	QP	
2	0.4660	-1.33	19.96	18.63	46.58	-27.95	AVG	
3	0.5060	16.00	19.98	35.98	56.00	-20.02	QP	
4	0.5899	17.82	20.01	37.83	56.00	-18.17	QP	
5	0.6900	15.91	20.04	35.95	56.00	-20.05	QP	
6	0.8980	-1.55	20.09	18.54	46.00	-27.46	AVG	
7	1.0859	16.91	20.12	37.03	56.00	-18.97	QP	
8	1.3940	-1.97	20.13	18.16	46.00	-27.84	AVG	
9	1.8820	17.64	20.14	37.78	56.00	-18.22	QP	
10	1.8820	-2.19	20.14	17.95	46.00	-28.05	AVG	
11	3.2020	-3.19	20.16	16.97	46.00	-29.03	AVG	
12	4.7780	-3.31	20.20	16.89	46.00	-29.11	AVG	

4. Radiation Spurious Emission and Band Edge

4.1. Test Standard and Limit

Test Standard	FCC Part15 C Section 15.209 and 15.205				
Test Limit	Frequency (MHz)	Field strength (microvolt/meter)	Limit (dBuV/m)	Remark	Measurement distance (m)
	0.009MHz~0.490MHz	2400/F(kHz)	-	-	300
	0.490MHz~1.705MHz	24000/F(kHz)	-	-	30
	1.705MHz~30MHz	30	-	-	30
	30MHz~88MHz	100	40.0	Quasi-peak	3
	88MHz~216MHz	150	43.5	Quasi-peak	3
	216MHz~960MHz	200	46.0	Quasi-peak	3
	960MHz~1000MHz	500	54.0	Quasi-peak	3
	Above 1000MHz	500	54.0	Average	3
-		74.0	Peak	3	

Remark:

- (1)The lower limit shall apply at the transition frequency.
- (2) 15.35(b), Unless otherwise specified, the limit on peak radio frequency emissions is 20dB above the maximum permitted average emission limit applicable to the equipment under test. This peak limit applies to the total peak emission level radiated by the device.

4.2. Test Setup

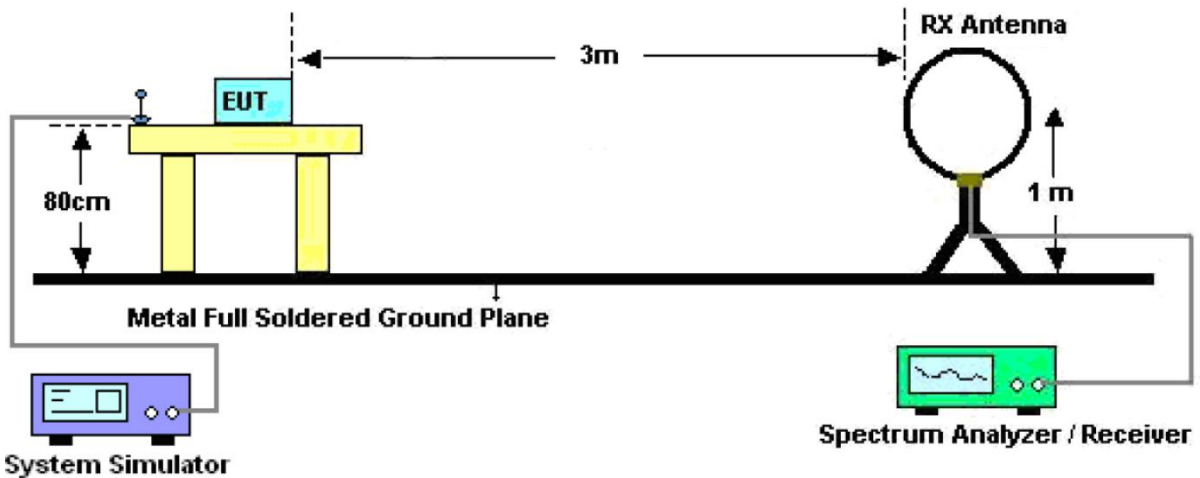


Figure 1. Below 30MHz

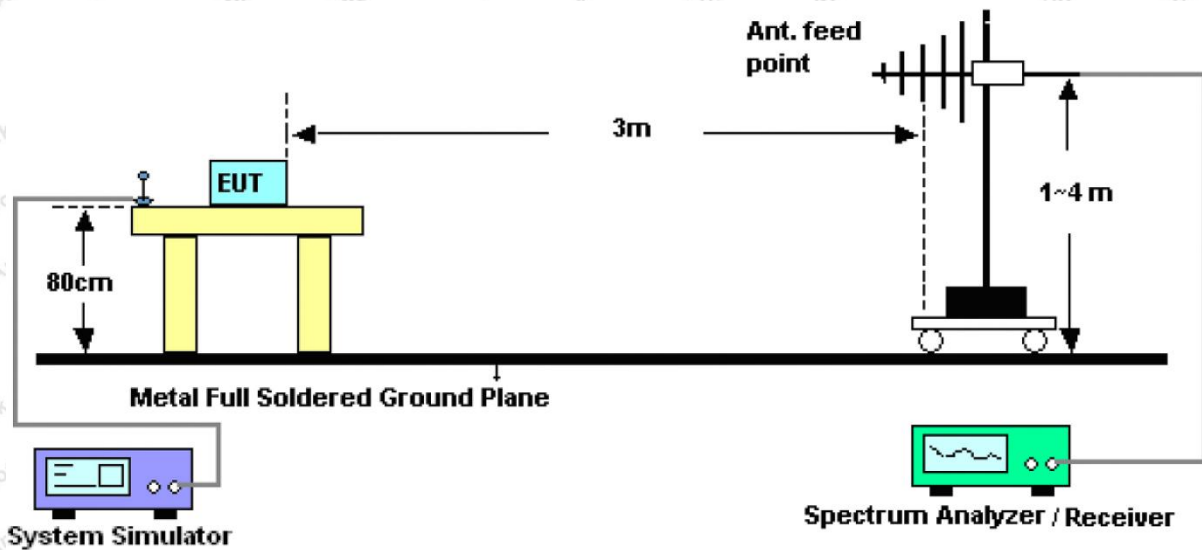


Figure 2. 30MHz to 1GHz

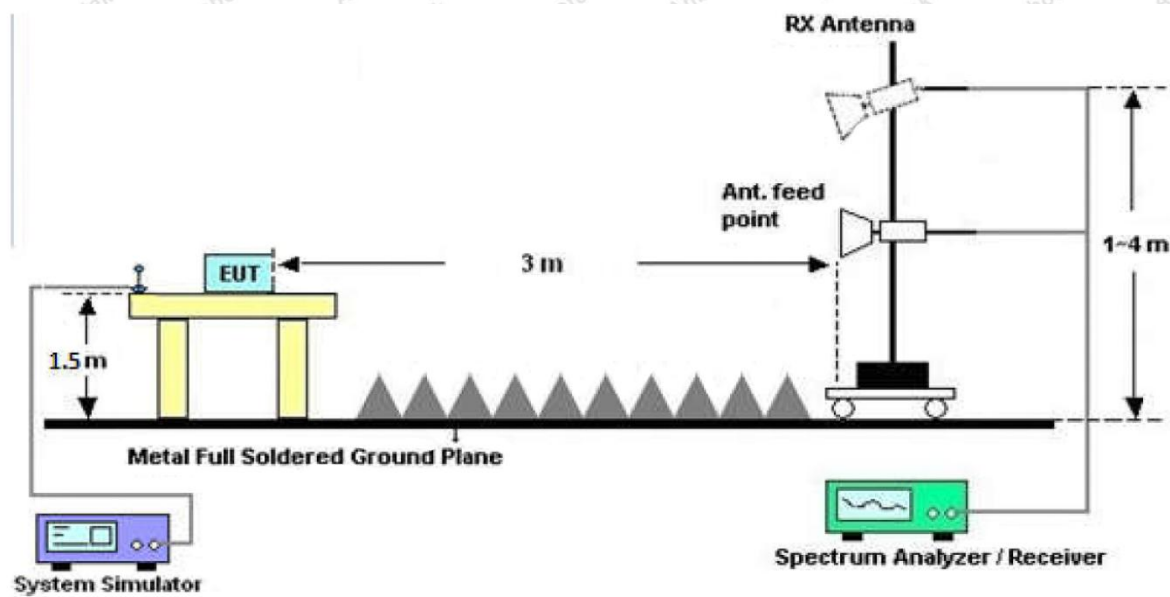


Figure 3. Above 1 GHz

4.3. Test Procedure

For below 1GHz: The EUT is placed on a turntable, which is 0.8m above the ground plane.

For above 1GHz: The EUT is placed on a turntable, which is 1.5m above the ground plane.

The turn table can rotate 360 degrees to determine the position of the maximum emission level. The EUT is set 3 meters away from the receiving antenna which is mounted on a antenna tower. The antenna can be moved up and down from 1 to 4 meters to find out the maximum emission level. Rotated the EUT through three orthogonal axes to determine the maximum emissions, both horizontal and vertical polarization of the antenna are set on test. The EUT is tested in 9*6*6 Chamber. The device is evaluated in xyz orientation.

For 9kHz to 150kHz, Set the spectrum analyzer as:

RBW = 200Hz, VBW = 1kHz, Detector= Quasi-Peak, Trace mode= Max hold, Sweep- auto couple.

For 150kHz to 30MHz, Set the spectrum analyzer as:

RBW = 9kHz, VBW = 30kHz, Detector= Quasi-Peak, Trace mode= Max hold, Sweep- auto couple.

For 30MHz to 1000MHz, Set the spectrum analyzer as:

RBW = 100kHz, VBW = 300kHz, Detector= Quasi-Peak, Trace mode= Max hold, Sweep- auto couple.

4.4. Test Data

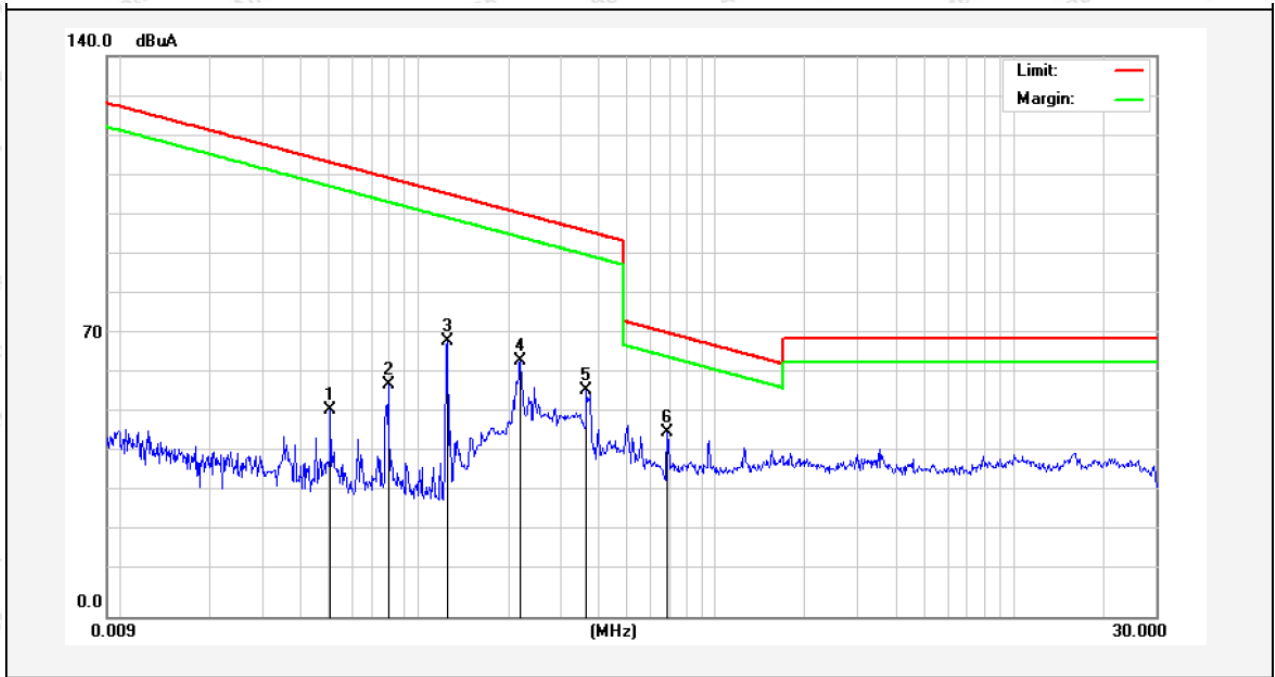
PASS

Note: The data is in TX mode, and this is the worst mode.

Test Results

(Between 9KHz – 30MHz)

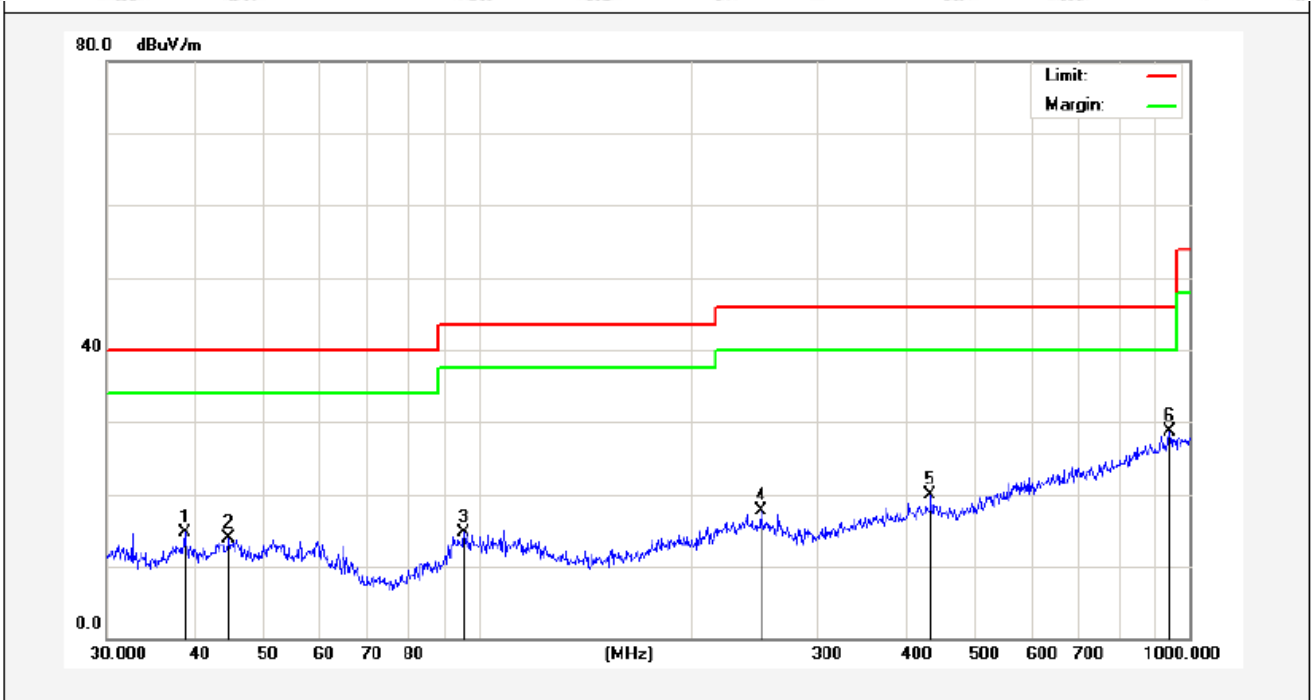
Job No.: SZAWW190618002-01
Standard: FCC PART15 C_3m **Power Source:** AC 120V, 60Hz for adapter
Test item: Radiation Test **Temp.(C)/Hum.(%RH):** 24.3°C/54%RH
Test Mode: Mode 1 **Distance:** 3m



Frequency (MHz)	Read Level (dBUV)	Antenna Factor (dB/m)	Cable Loss (dB)	Preamp Factor (dB)	Level (dBUV/m)	Limit (dBUV/m)	Over Limit (dB)	Detector	degree (dge)
0.5090	40.21	19.53	2.59	0	62.33	133.36	-71.03	Peak	256
0.5090	29.60	19.53	2.59	0	51.72	113.36	-61.64	AV	256
0.0792	44.54	19.30	2.54	0	66.38	129.54	-63.16	Peak	147
0.0792	36.11	19.30	2.54	0	57.95	109.54	-51.59	AV	147
0.1250	57.71	19.30	2.54	0	79.55	125.54	-45.99	Peak	68
0.1250	46.77	19.30	2.54	0	68.61	105.54	-36.93	AV	68
0.2199	51.93	19.53	2.59	0	74.05	120.72	-46.67	Peak	349
0.2199	41.84	19.53	2.59	0	63.96	100.72	-36.76	AV	349
0.3664	43.75	19.53	2.59	0	65.87	116.31	-50.44	Peak	42
0.3664	34.29	19.53	2.59	0	56.41	96.31	-39.90	AV	42
0.6895	23.07	20.34	2.59	0	46.00	70.83	-24.83	QP	85

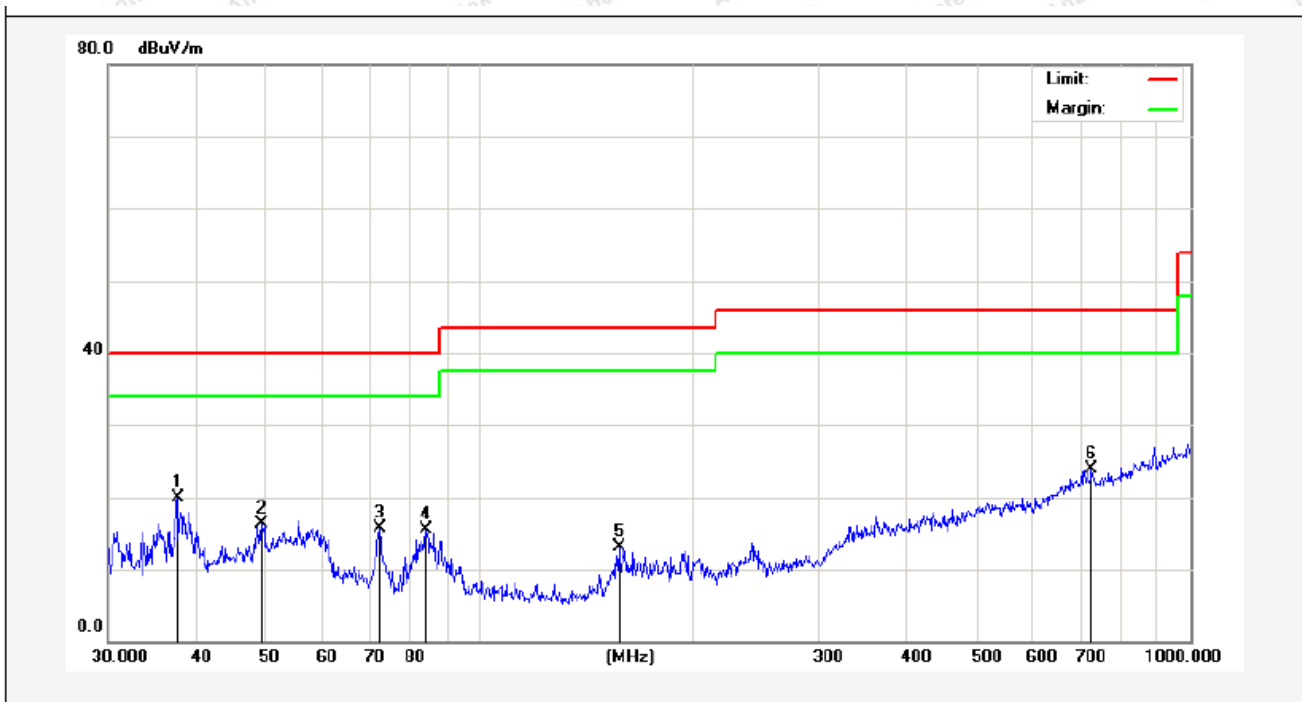
Remark: According to FCC PART 15.209 (d), the emission limits for the frequency bands 9–90 kHz, 110–490 kHz and above 1000 MHz, Radiated emission limits in these three bands are based on measurements employing an average detector.

Job No.:	SZAWW190618002-01	Polarization:	Horizontal
Standard:	FCC PART15 C _3m	Power Source:	AC 120V, 60Hz for adapter
Test item:	Radiation Test	Temp.(C)/Hum.(%RH):	24.9°C/51%RH
Test Mode:	Mode 1	Distance:	3m



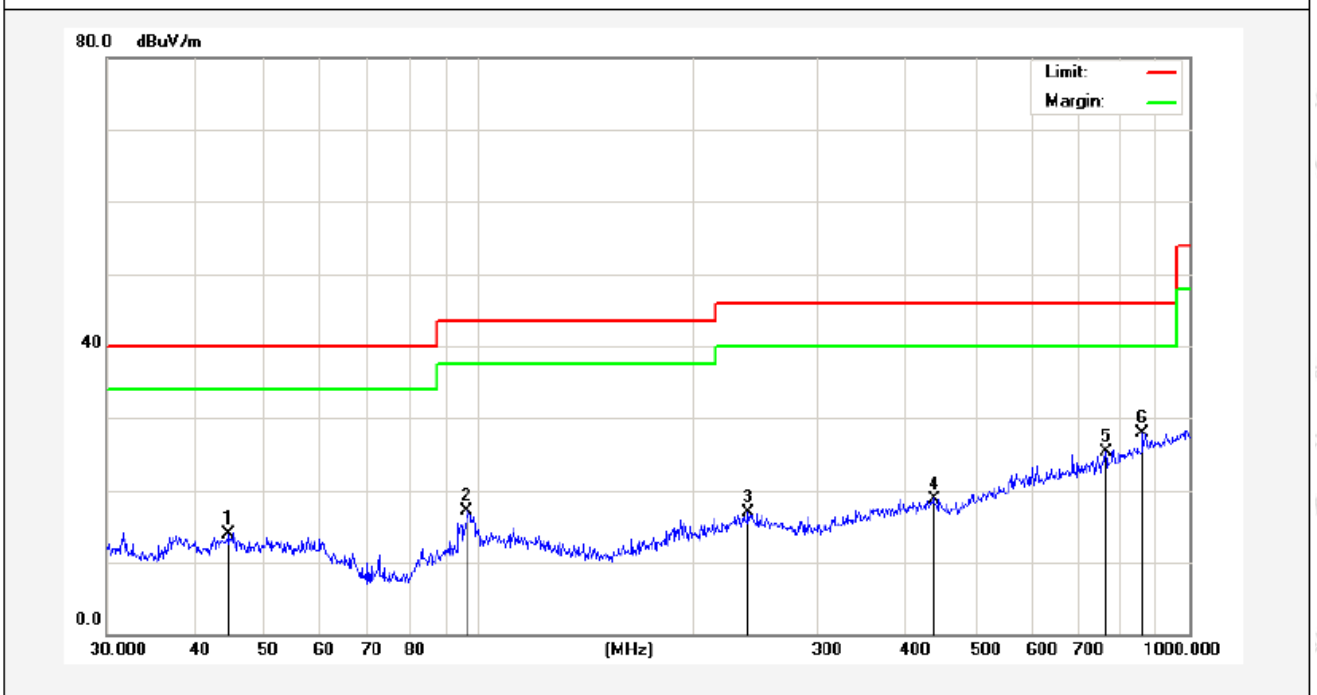
No.	Freq. (MHz)	Reading (dBuV)	Factor (dB/m)	Result (dBuV/m)	Limit (dBuV/m)	Over Limit (dB)	Detector	Height (cm)	degree (deg)	Remark
1	38.6160	32.57	-17.93	14.64	40.00	-25.36	QP	300	160	
2	44.5868	31.48	-17.54	13.94	40.00	-26.06	QP	300	220	
3	95.4270	38.01	-23.24	14.77	43.50	-28.73	QP	300	360	
4	249.4250	37.14	-19.38	17.76	46.00	-28.24	QP	300	120	
5	432.5457	33.40	-13.59	19.81	46.00	-26.19	QP	300	60	
6	938.8326	34.20	-5.41	28.79	46.00	-17.21	QP	300	0	

Job No.:	SZAWW190618002-01	Polarization:	Vertical
Standard:	FCC PART15 C_3m	Power Source:	AC 120V, 60Hz for adpater
Test item:	Radiation Test	Temp.(C)/Hum.(%RH):	24.9°C/51%RH
Test Mode:	Mode 1	Distance:	3m



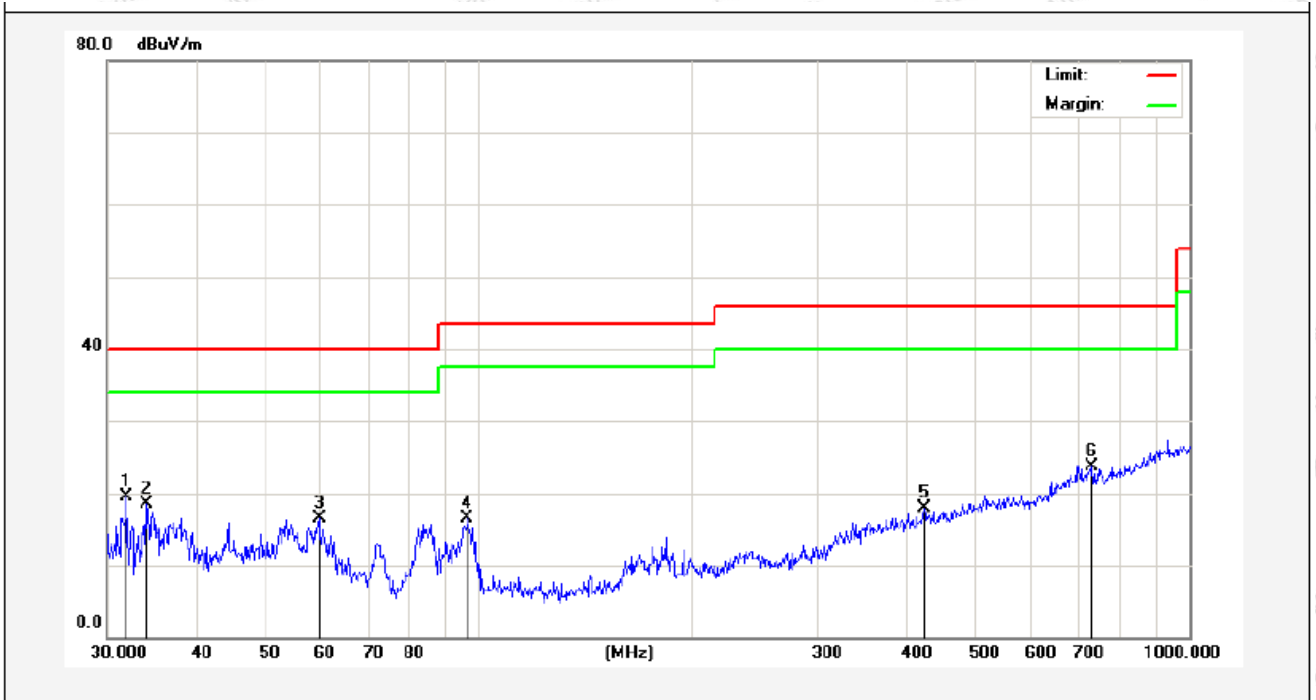
No.	Freq. (MHz)	Reading (dBuV)	Factor (dB/m)	Result (dBuV/m)	Limit (dBuV/m)	Over Limit (dB)	Detector	Height (cm)	degree (deg)	Remark
1	37.5479	37.17	-17.22	19.95	40.00	-20.05	QP	300	60	
2	49.3594	33.06	-16.74	16.32	40.00	-23.68	QP	300	160	
3	72.3376	37.50	-21.87	15.63	40.00	-24.37	QP	300	120	
4	84.1100	35.72	-20.18	15.54	40.00	-24.46	QP	300	0	
5	157.0074	32.09	-18.97	13.12	43.50	-30.38	QP	300	360	
6	726.8052	32.45	-8.58	23.87	46.00	-22.13	QP	300	40	

Job No.:	SZAWW190618002-01	Polarization:	Horizontal
Standard:	FCC PART15 C _3m	Power Source:	AC 240V, 60Hz for adpater
Test item:	Radiation Test	Temp.(C)/Hum.(%RH):	24.9°C/51%RH
Test Mode:	Mode 1	Distance:	3m



No.	Freq. (MHz)	Reading (dBuV)	Factor (dB/m)	Result (dBuV/m)	Limit (dBuV/m)	Over Limit (dB)	Detector	Height (cm)	degree (deg)	Remark
1	44.5868	31.36	-17.54	13.82	40.00	-26.18	QP	300	120	
2	96.4362	40.19	-23.16	17.03	43.50	-26.47	QP	300	0	
3	239.9874	35.88	-18.95	16.93	46.00	-29.07	QP	300	360	
4	437.1199	32.36	-13.56	18.80	46.00	-27.20	QP	300	360	
5	763.3757	33.57	-8.27	25.30	46.00	-20.70	QP	300	230	
6	860.0352	34.51	-6.60	27.91	46.00	-18.09	QP	300	89	

Job No.:	SZAWW190618002-01	Polarization:	Vertical
Standard:	FCC PART15 C_3m	Power Source:	AC 240V, 60Hz for adpater
Test item:	Radiation Test	Temp.(C)/Hum.(%RH):	24.9°C/51%RH
Test Mode:	Mode 1	Distance:	3m



No.	Freq. (MHz)	Reading (dBuV)	Factor (dB/m)	Result (dBuV/m)	Limit (dBuV/m)	Over Limit (dB)	Detector	Height (cm)	degree (deg)	Remark
1	31.9546	37.36	-17.93	19.43	40.00	-20.57	QP	300	120	
2	34.0365	36.36	-17.90	18.46	40.00	-21.54	QP	300	360	
3	59.6493	33.89	-17.39	16.50	40.00	-23.50	QP	300	100	
4	96.4362	33.71	-17.16	16.55	43.50	-26.95	QP	300	0	
5	423.5403	30.41	-12.57	17.84	46.00	-28.16	QP	300	120	
6	729.3583	32.22	-8.51	23.71	46.00	-22.29	QP	300	240	

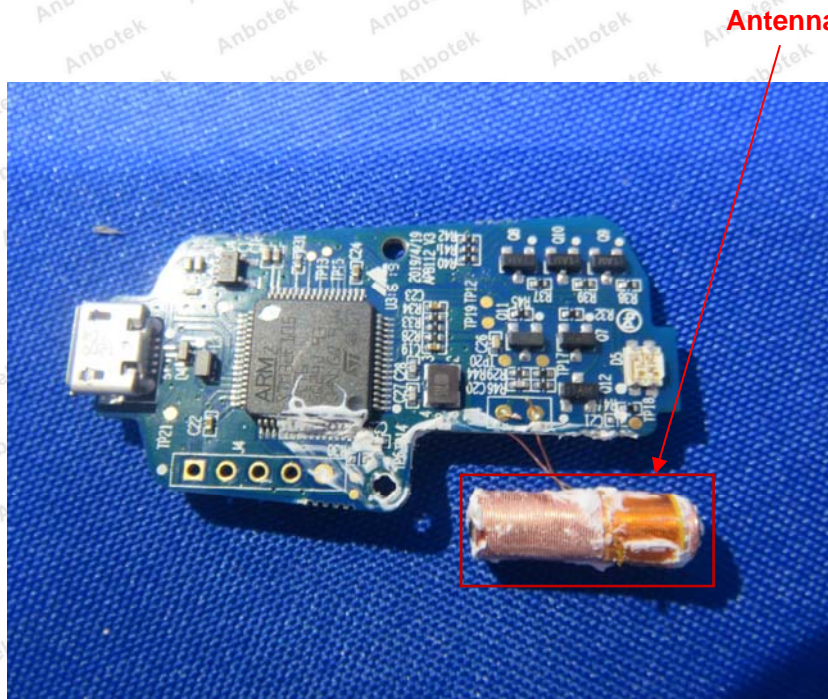
5. Antenna Requirement

5.1. Test Standard and Requirement

Test Standard	FCC Part15 Section 15.203
Requirement	An intentional radiator shall be designed to ensure that no antenna other than that furnished by the responsible party shall be used with the device. The use of a permanently attached antenna or of an antenna that uses a unique coupling to the intentional radiator, the manufacturer may design the unit so that a broken antenna can

5.2. Antenna Connected Construction

The antenna is a Inductive loop coil Antenna which permanently attached, and the best case gain of the antenna is 0 dBi. It complies with the standard requirement.



APPENDIX I -- TEST SETUP PHOTOGRAPH

Photo of Conducted Emission Measurement



Photo of Radiation Emission Test





APPENDIX II -- EXTERNAL PHOTOGRAPH

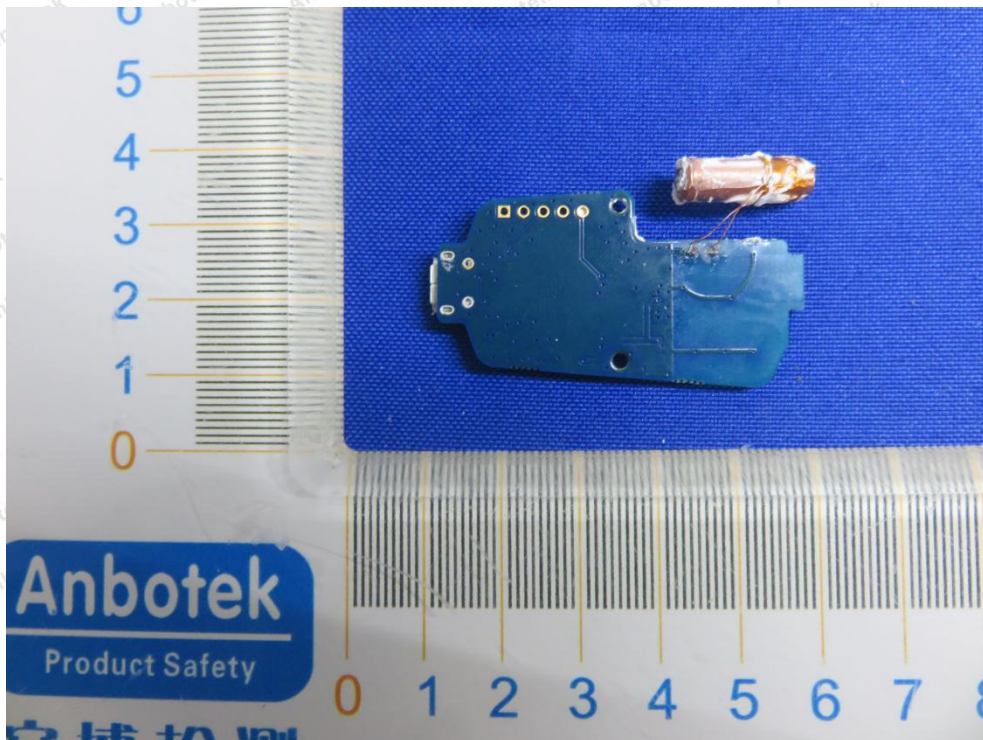


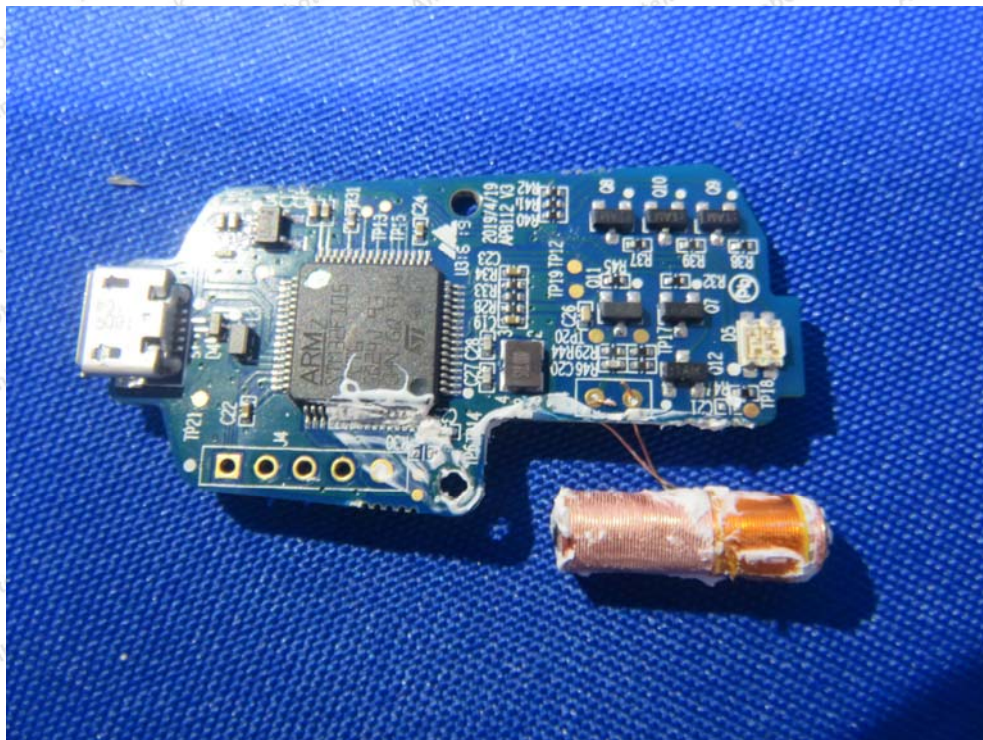
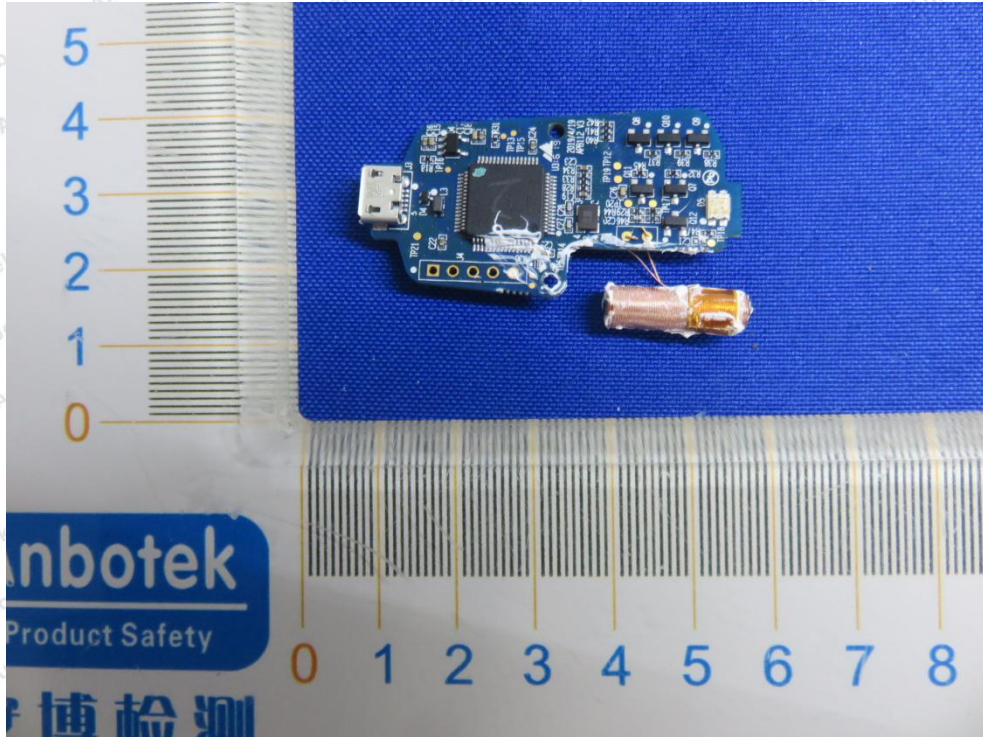






APPENDIX III -- INTERNAL PHOTOGRAPH





----- End of Report -----